

Data Path : Z:\pestpcbsrv\HPCHEM1\ECD\_P\Data\PP042623\  
 Data File : PP057261.D  
 Signal(s) : Signal #1: ECD1A.ch Signal #2: ECD2B.ch  
 Acq On : 27 Apr 2023 03:30  
 Operator : YP\AJ  
 Sample : 02491-03MS  
 Misc :  
 ALS Vial : 42 Sample Multiplier: 1

Instrument :  
 ECD\_P  
 ClientSampleId :

Integration File signal 1: autoint1.e  
 Integration File signal 2: autoint2.e  
 Quant Time: Apr 27 04:25:14 2023  
 Quant Method : Z:\pestpcbsrv\HPCHEM1\ECD\_P\methods\PP042623.M  
 Quant Title : GC EXTRACTABLES  
 QLast Update : Thu Apr 27 04:11:22 2023  
 Response via : Initial Calibration  
 Integrator: ChemStation

Volume Inj. : 2 µl  
 Signal #1 Phase : ZB-MR1 Signal #2 Phase: ZB-MR2  
 Signal #1 Info : 30Mx0.32mmx 0.50µ Signal #2 Info : 30M x 0.32mm x 0.25µm

Compound	RT#1	RT#2	Resp#1	Resp#2	ng/ml	ng/ml
System Monitoring Compounds						
1) SA Tetrachlo...	4.412	3.639	50405126	34525829	22.793	21.071
2) SA Decachlor...	10.246	8.706	28468668	38163636	21.390	22.265
Target Compounds						
3) L1 AR-1016-1	5.590	4.739	29413077	26899760	504.390	505.663
4) L1 AR-1016-2	5.613	4.758	42651720	37631279	498.610	508.492
5) L1 AR-1016-3	5.675	4.936	26444440	20702786	489.717	506.638
6) L1 AR-1016-4	5.774	4.978	21072284	18943717	491.672	505.373
7) L1 AR-1016-5	6.072	5.194	23881513	23318527	500.532	480.740
8) L2 AR-1221-1	4.618	3.854	3619724	2508370	139.023	122.135
9) L2 AR-1221-2	4.709	3.942	4438209	3596037	231.860	231.228
10) L2 AR-1221-3	4.785	4.019	18413111	15431601	322.987	326.419
11) L3 AR-1232-1	4.785	4.019	18413111	15431601	375.625	383.923
12) L3 AR-1232-2	5.320	4.758	25675971	37631279	1016.848	1045.709
13) L3 AR-1232-3	5.613	4.936	42651720	20702786	1039.899	1070.457
14) L3 AR-1232-4	5.774	5.020	21072284	22983529	1034.448	1134.132
15) L3 AR-1232-5	5.867	5.194	21538883	23318527	1096.383	1053.079
16) L4 AR-1242-1	5.590	4.739	29413077	26899760	598.103	597.634
17) L4 AR-1242-2	5.613	4.758	42651720	37631279	598.316	606.279
18) L4 AR-1242-3	5.675	4.936	26444440	20702786	590.105	598.967
19) L4 AR-1242-4	5.774	5.020	21072284	22983529	585.503	585.544
20) L4 AR-1242-5	6.517	5.550	2693317	19718335	85.177	451.559 #
21) L5 AR-1248-1	5.590	4.739	29413077	26899760	799.089	787.110
22) L5 AR-1248-2	5.867	4.978	21538883	18943717	339.934	341.878
23) L5 AR-1248-3	6.072	5.020	23881513	22983529	360.723	399.096
24) L5 AR-1248-4	6.452f	5.194	20811535	23318527	370.268	352.473
25) L5 AR-1248-5	6.517	5.590	2693317	2528513	49.359	44.434
26) L6 AR-1254-1	6.452	5.550	20811535	19718335	276.766	196.850 #
27) L6 AR-1254-2	6.672	5.698	17857558	18580324	169.581	211.118
28) L6 AR-1254-3	7.041	6.120	8560036	32920393	87.706	240.196 #
29) L6 AR-1254-4	7.328	6.335	5683293	2862937	96.871	37.985 #
30) L6 AR-1254-5	7.749	6.756	43085184	58493414	681.386	505.575 #
31) L7 AR-1260-1	7.207	6.237	41409437	47930136	478.586	460.267
32) L7 AR-1260-2	7.465	6.425	39802680	52757553	483.955	460.988
33) L7 AR-1260-3	7.827	6.581	27798588	51582166	412.168	457.316
34) L7 AR-1260-4	8.054	7.056	33052481	38105486	437.153	413.788
35) L7 AR-1260-5	8.379	7.298	50740626	75416419	435.650	420.508
36) L8 AR-1262-1	7.827	6.848	27798588	21781350	305.233	403.090 #
37) L8 AR-1262-2	8.379	7.056	50740626	38105486	407.140	339.862
38) L8 AR-1262-3	8.709	7.584	30580217	16263556	344.625	204.953 #
39) L8 AR-1262-4	8.770f	7.647	13953974	57520201	213.873	389.060 #
40) L8 AR-1262-5	9.465	8.145	11090299	17869816	279.884	274.176
41) L9 AR-1268-1	8.709	7.584	30580217	16263556	172.598	65.400 #

Data Path : Z:\pestpcbsrv\HPCHEM1\ECD\_P\Data\PP042623\  
 Data File : PP057261.D  
 Signal(s) : Signal #1: ECD1A.ch Signal #2: ECD2B.ch  
 Acq On : 27 Apr 2023 03:30  
 Operator : YP\AJ  
 Sample : 02491-03MS  
 Misc :  
 ALS Vial : 42 Sample Multiplier: 1

Instrument :  
 ECD\_P  
 ClientSampleId :

Integration File signal 1: autoint1.e  
 Integration File signal 2: autoint2.e  
 Quant Time: Apr 27 04:25:14 2023  
 Quant Method : Z:\pestpcbsrv\HPCHEM1\ECD\_P\methods\PP042623.M  
 Quant Title : GC EXTRACTABLES  
 QLast Update : Thu Apr 27 04:11:22 2023  
 Response via : Initial Calibration  
 Integrator: ChemStation

Volume Inj. : 2 µl  
 Signal #1 Phase : ZB-MR1 Signal #2 Phase: ZB-MR2  
 Signal #1 Info : 30Mx0.32mmx 0.50µ Signal #2 Info : 30M x 0.32mm x 0.25µm

	Compound	RT#1	RT#2	Resp#1	Resp#2	ng/ml	ng/ml
42)	L9 AR-1268-2	8.770f	7.647	13953974	57520201	96.788	252.320 #
43)	L9 AR-1268-3	9.027	7.856	1076736	1662316	6.865	7.794
44)	L9 AR-1268-4	9.465	8.145	11090299	17869816	238.555	238.466
45)	L9 AR-1268-5	9.895	8.443	4388664	6586188	11.218	12.070

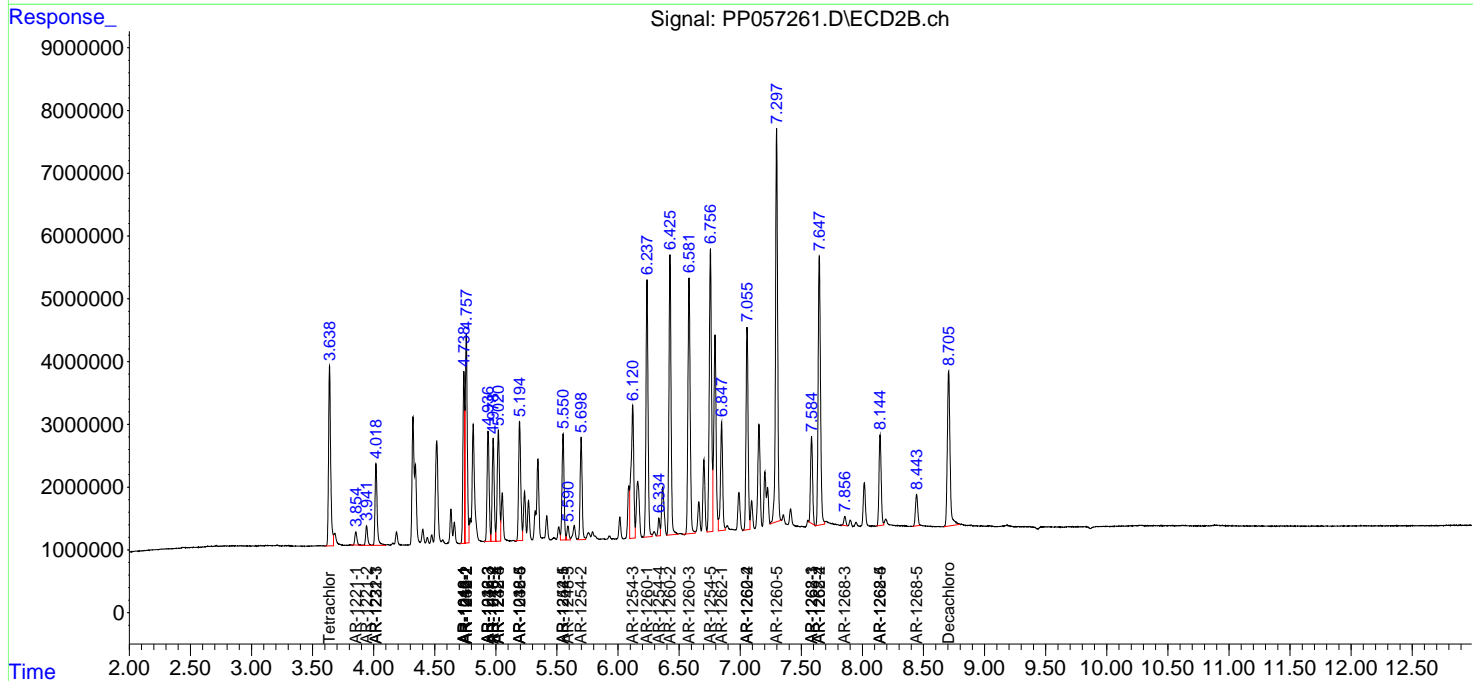
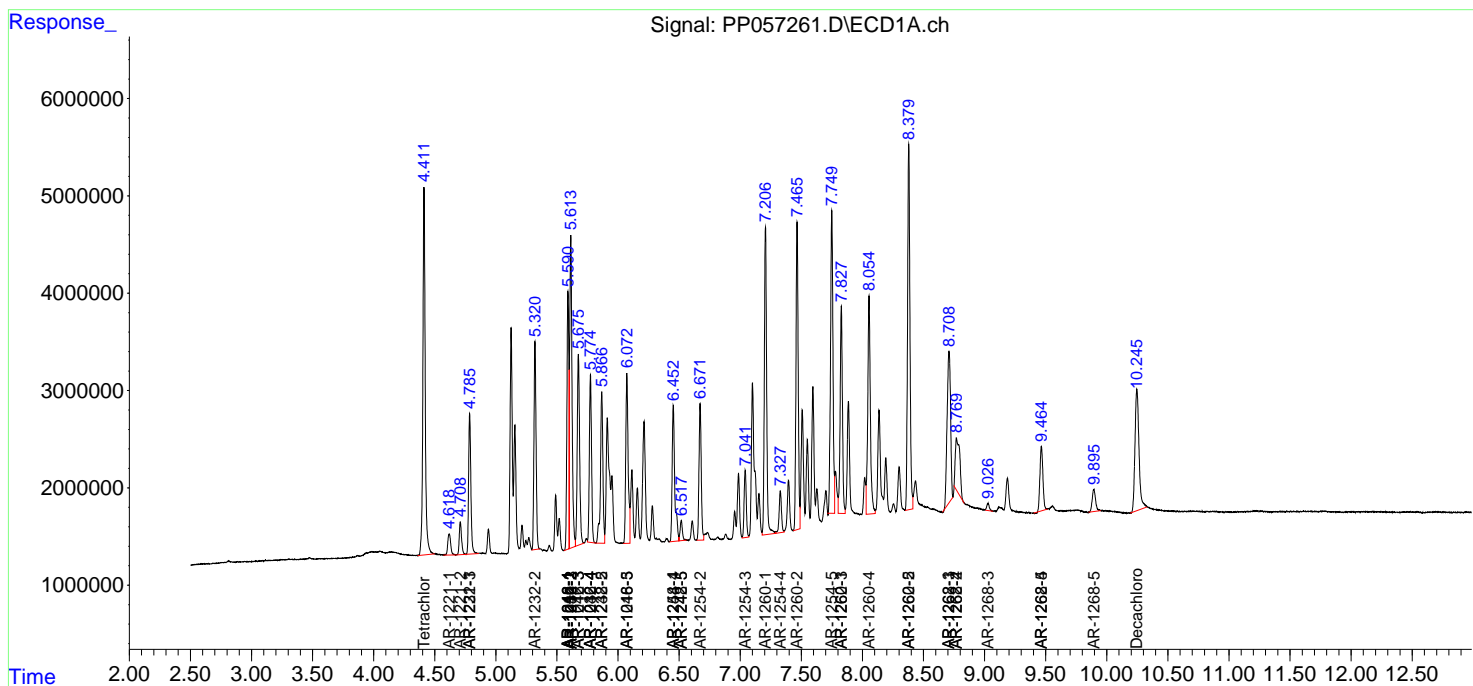
(f)=RT Delta > 1/2 Window (#)=Amounts differ by > 25% (m)=manual int.

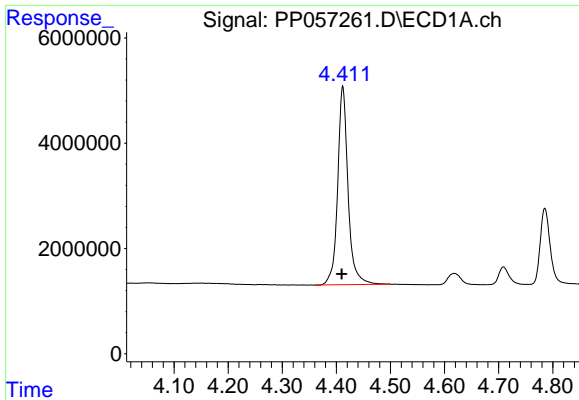
Data Path : Z:\pestpcbsrv\HPCHEM1\ECD\_P\Data\PP042623\  
 Data File : PP057261.D  
 Signal(s) : Signal #1: ECD1A.ch Signal #2: ECD2B.ch  
 Acq On : 27 Apr 2023 03:30  
 Operator : YP\AJ  
 Sample : 02491-03MS  
 Misc :  
 ALS Vial : 42 Sample Multiplier: 1

Instrument :  
 ECD\_P  
 ClientSampleId :

Integration File signal 1: autoint1.e  
 Integration File signal 2: autoint2.e  
 Quant Time: Apr 27 04:25:14 2023  
 Quant Method : Z:\pestpcbsrv\HPCHEM1\ECD\_P\methods\PP042623.M  
 Quant Title : GC EXTRACTABLES  
 QLast Update : Thu Apr 27 04:11:22 2023  
 Response via : Initial Calibration  
 Integrator: ChemStation

Volume Inj. : 2 µl  
 Signal #1 Phase : ZB-MR1 Signal #2 Phase: ZB-MR2  
 Signal #1 Info : 30Mx0.32mmx 0.50µ Signal #2 Info : 30M x 0.32mm x 0.25µm



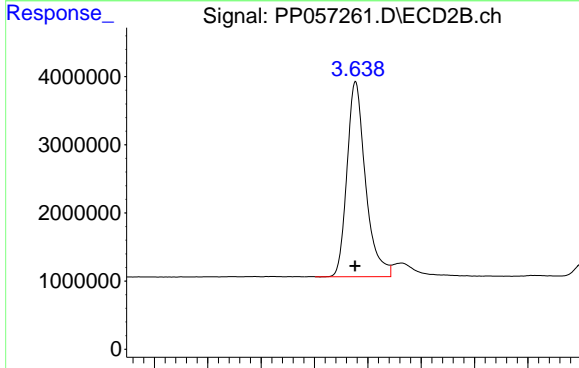


#1 Tetrachloro-m-xylene

R.T.: 4.412 min  
 Delta R.T.: 0.002 min  
 Response: 50405126  
 Conc: 22.79 ng/ml

Instrument :  
 ECD\_P  
 ClientSampleId :

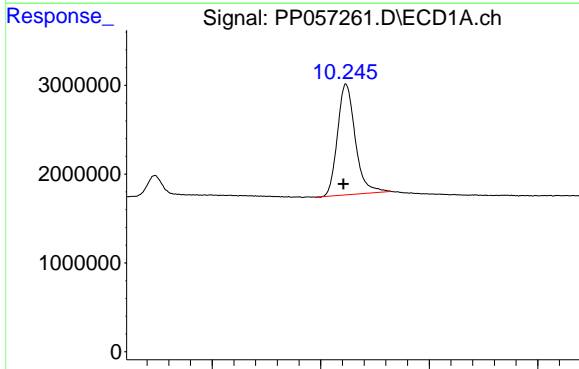
Time 4.10 4.20 4.30 4.40 4.50 4.60 4.70 4.80



#1 Tetrachloro-m-xylene

R.T.: 3.639 min  
 Delta R.T.: 0.000 min  
 Response: 34525829  
 Conc: 21.07 ng/ml

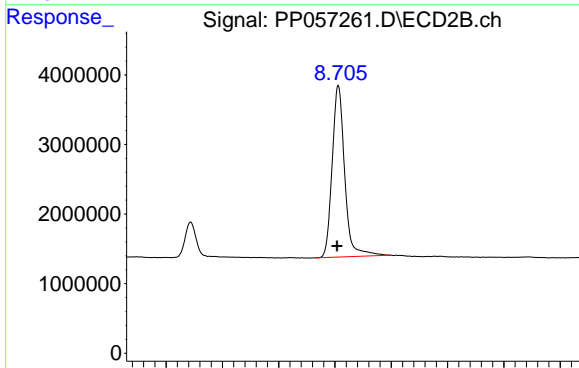
Time 3.45 3.50 3.55 3.60 3.65 3.70 3.75 3.80



#2 Decachlorobiphenyl

R.T.: 10.246 min  
 Delta R.T.: 0.004 min  
 Response: 28468668  
 Conc: 21.39 ng/ml

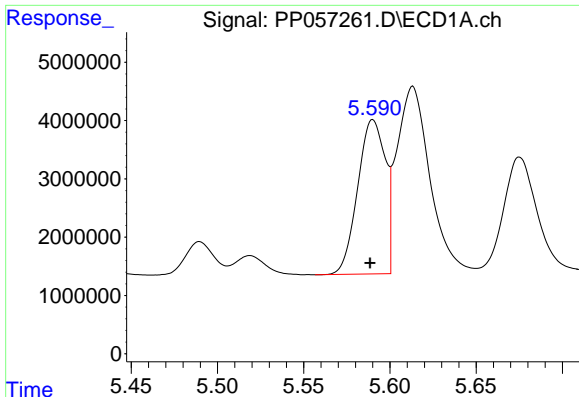
Time 10.00 10.20 10.40 10.60



#2 Decachlorobiphenyl

R.T.: 8.706 min  
 Delta R.T.: 0.002 min  
 Response: 38163636  
 Conc: 22.26 ng/ml

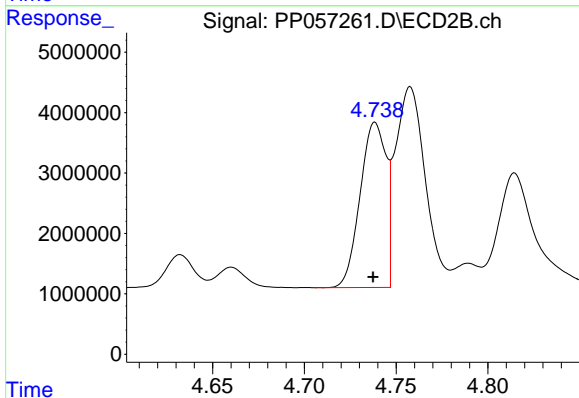
Time 8.40 8.50 8.60 8.70 8.80 8.90 9.00 9.10



#3 AR-1016-1

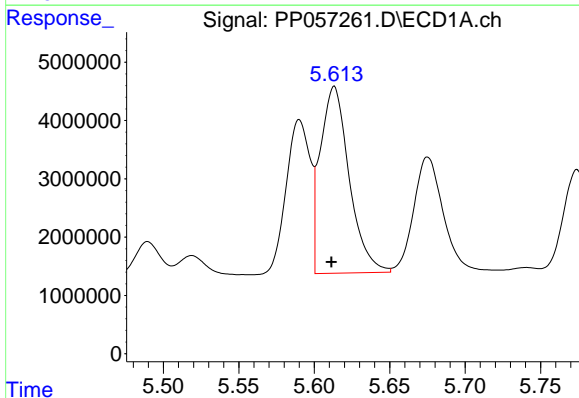
R.T.: 5.590 min  
 Delta R.T.: 0.002 min  
 Response: 29413077  
 Conc: 504.39 ng/ml

Instrument :  
 ECD\_P  
 ClientSampleId :



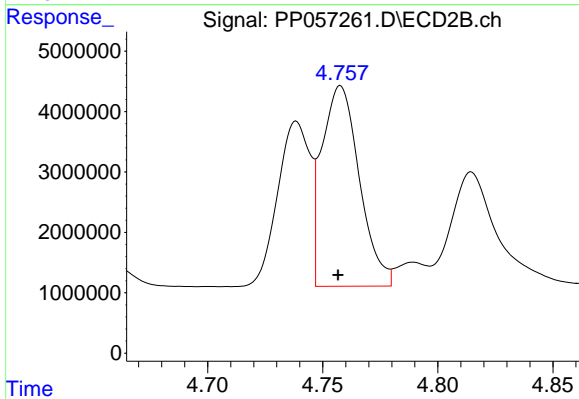
#3 AR-1016-1

R.T.: 4.739 min  
 Delta R.T.: 0.001 min  
 Response: 26899760  
 Conc: 505.66 ng/ml



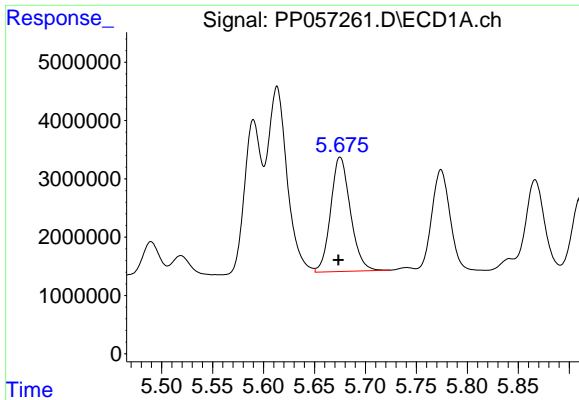
#4 AR-1016-2

R.T.: 5.613 min  
 Delta R.T.: 0.002 min  
 Response: 42651720  
 Conc: 498.61 ng/ml



#4 AR-1016-2

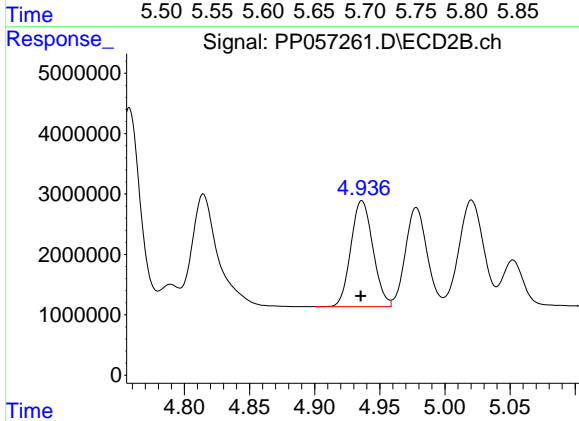
R.T.: 4.758 min  
 Delta R.T.: 0.001 min  
 Response: 37631279  
 Conc: 508.49 ng/ml



#5 AR-1016-3

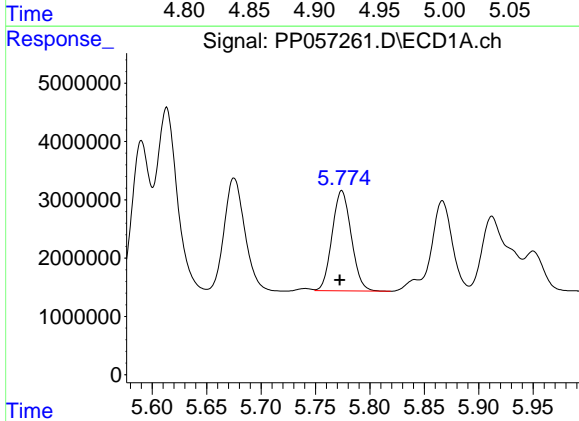
R.T.: 5.675 min  
 Delta R.T.: 0.002 min  
 Response: 26444440  
 Conc: 489.72 ng/ml

Instrument :  
 ECD\_P  
 ClientSampleId :



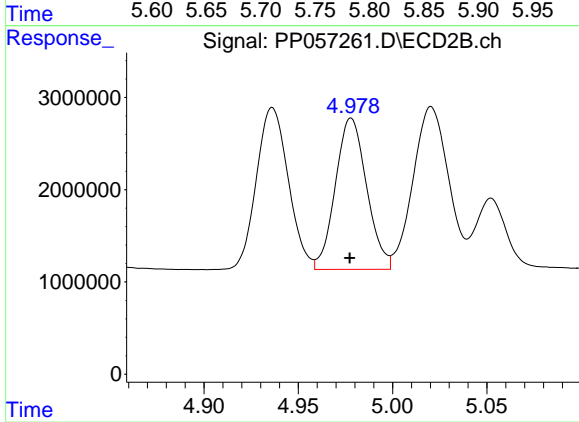
#5 AR-1016-3

R.T.: 4.936 min  
 Delta R.T.: 0.000 min  
 Response: 20702786  
 Conc: 506.64 ng/ml



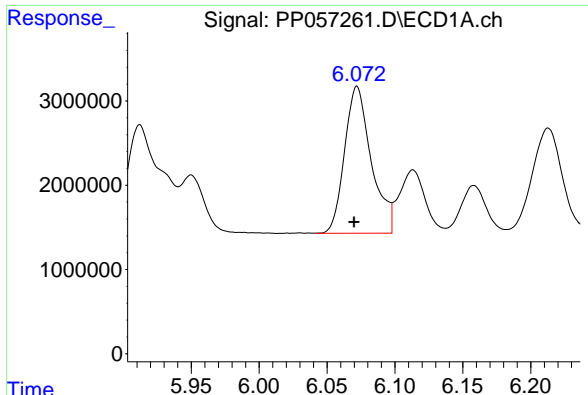
#6 AR-1016-4

R.T.: 5.774 min  
 Delta R.T.: 0.002 min  
 Response: 21072284  
 Conc: 491.67 ng/ml



#6 AR-1016-4

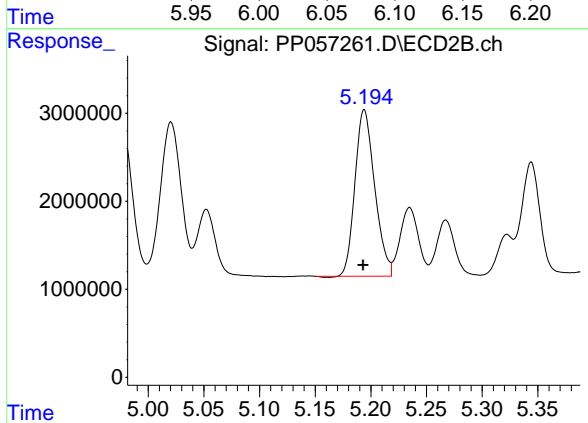
R.T.: 4.978 min  
 Delta R.T.: 0.000 min  
 Response: 18943717  
 Conc: 505.37 ng/ml



#7 AR-1016-5

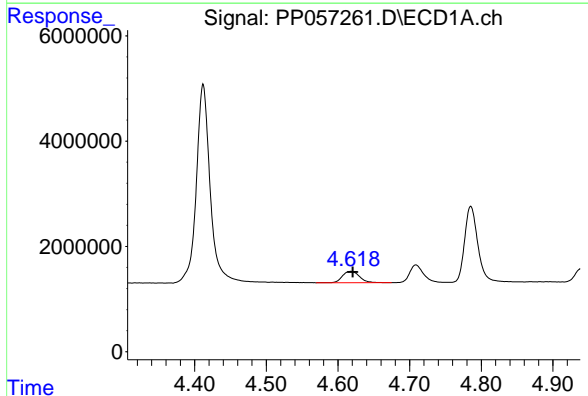
R.T.: 6.072 min  
 Delta R.T.: 0.002 min  
 Response: 23881513  
 Conc: 500.53 ng/ml

Instrument :  
 ECD\_P  
 ClientSampleId :



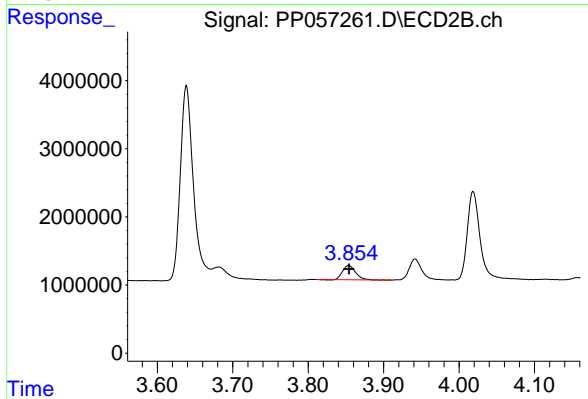
#7 AR-1016-5

R.T.: 5.194 min  
 Delta R.T.: 0.000 min  
 Response: 23318527  
 Conc: 480.74 ng/ml



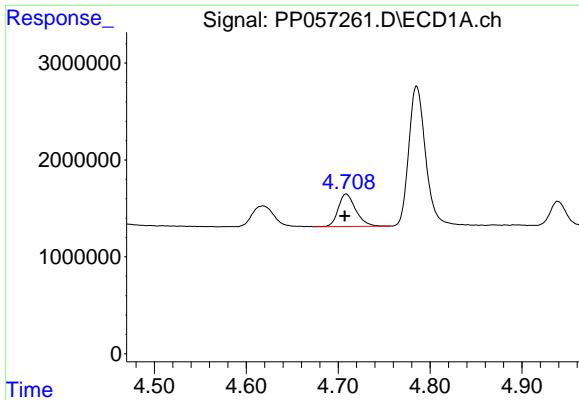
#8 AR-1221-1

R.T.: 4.618 min  
 Delta R.T.: -0.002 min  
 Response: 3619724  
 Conc: 139.02 ng/ml



#8 AR-1221-1

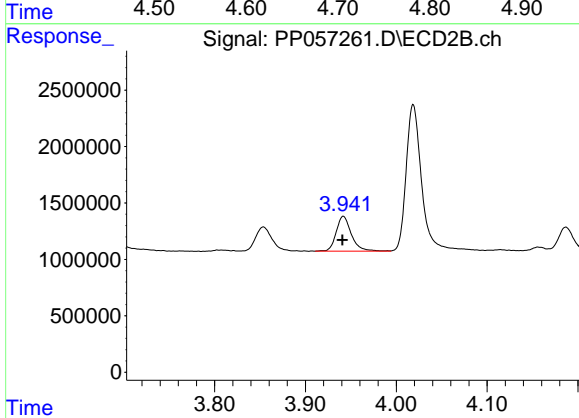
R.T.: 3.854 min  
 Delta R.T.: 0.000 min  
 Response: 2508370  
 Conc: 122.13 ng/ml



#9 AR-1221-2

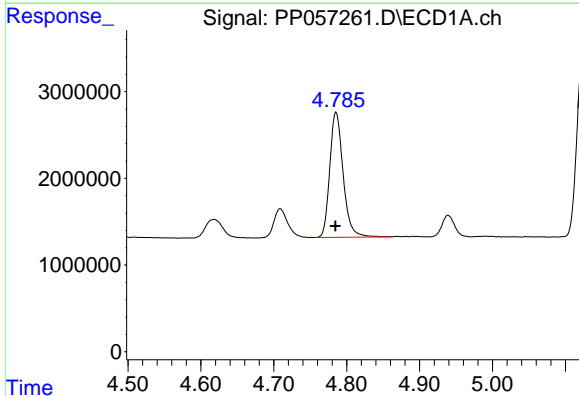
R.T.: 4.709 min  
 Delta R.T.: 0.002 min  
 Response: 4438209  
 Conc: 231.86 ng/ml

Instrument :  
 ECD\_P  
 ClientSampleId :



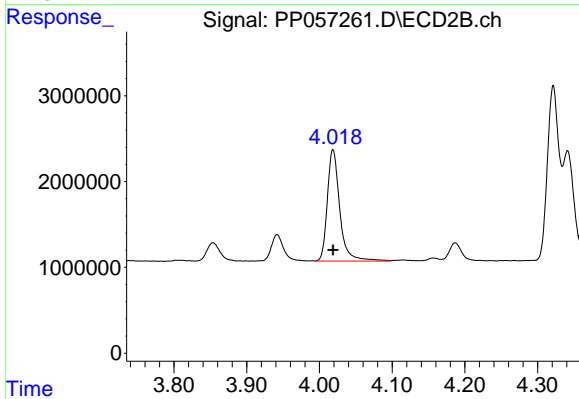
#9 AR-1221-2

R.T.: 3.942 min  
 Delta R.T.: 0.000 min  
 Response: 3596037  
 Conc: 231.23 ng/ml



#10 AR-1221-3

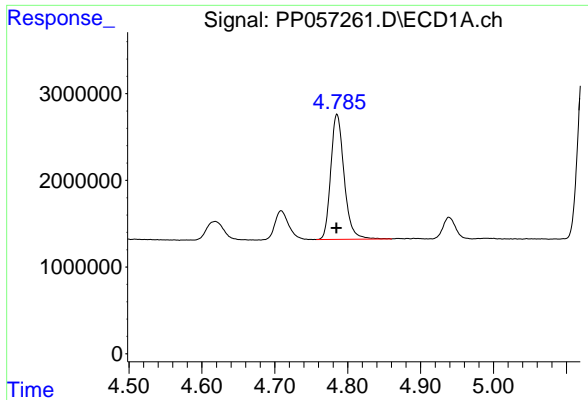
R.T.: 4.785 min  
 Delta R.T.: 0.000 min  
 Response: 18413111  
 Conc: 322.99 ng/ml



#10 AR-1221-3

R.T.: 4.019 min  
 Delta R.T.: 0.000 min  
 Response: 15431601  
 Conc: 326.42 ng/ml

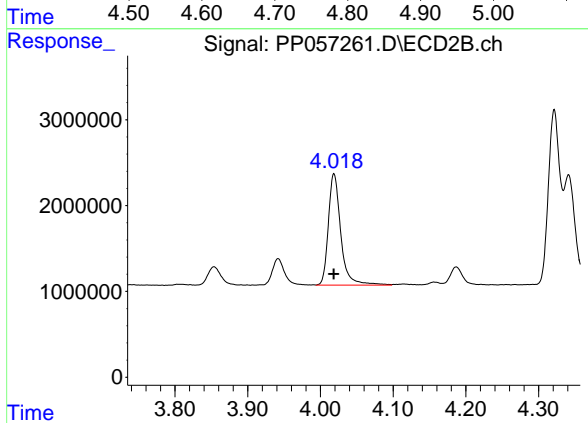




#11 AR-1232-1

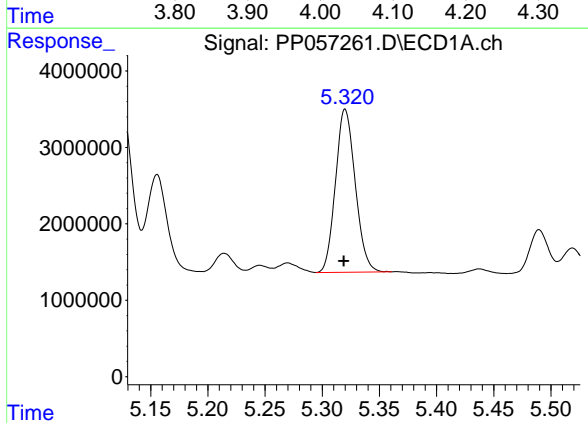
R.T.: 4.785 min  
 Delta R.T.: 0.000 min  
 Response: 18413111  
 Conc: 375.63 ng/ml

Instrument :  
 ECD\_P  
 ClientSampleId :



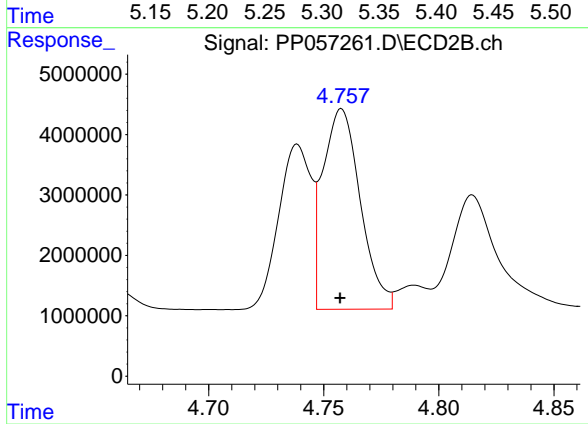
#11 AR-1232-1

R.T.: 4.019 min  
 Delta R.T.: 0.000 min  
 Response: 15431601  
 Conc: 383.92 ng/ml



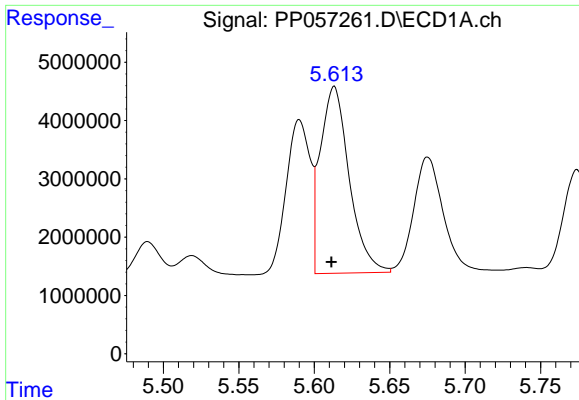
#12 AR-1232-2

R.T.: 5.320 min  
 Delta R.T.: 0.001 min  
 Response: 25675971  
 Conc: 1016.85 ng/ml



#12 AR-1232-2

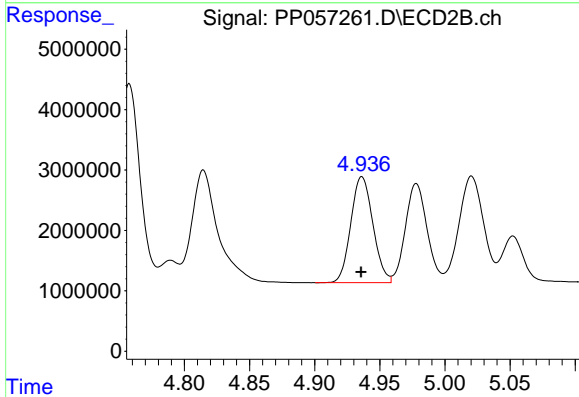
R.T.: 4.758 min  
 Delta R.T.: 0.000 min  
 Response: 37631279  
 Conc: 1045.71 ng/ml



#13 AR-1232-3

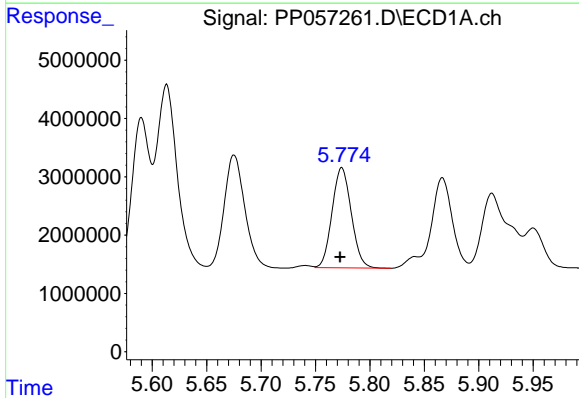
R.T.: 5.613 min  
 Delta R.T.: 0.002 min  
 Response: 42651720  
 Conc: 1039.90 ng/ml

Instrument :  
 ECD\_P  
 ClientSampleId :



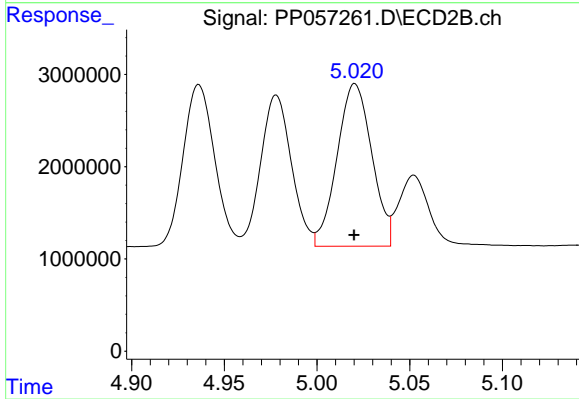
#13 AR-1232-3

R.T.: 4.936 min  
 Delta R.T.: 0.000 min  
 Response: 20702786  
 Conc: 1070.46 ng/ml



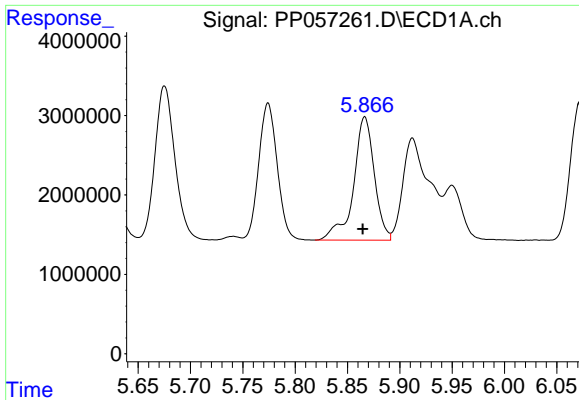
#14 AR-1232-4

R.T.: 5.774 min  
 Delta R.T.: 0.002 min  
 Response: 21072284  
 Conc: 1034.45 ng/ml



#14 AR-1232-4

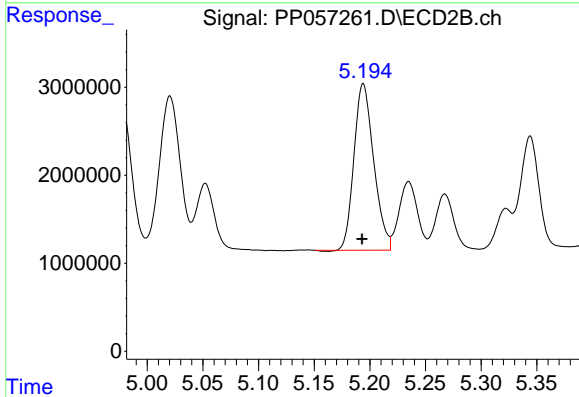
R.T.: 5.020 min  
 Delta R.T.: 0.000 min  
 Response: 22983529  
 Conc: 1134.13 ng/ml



#15 AR-1232-5

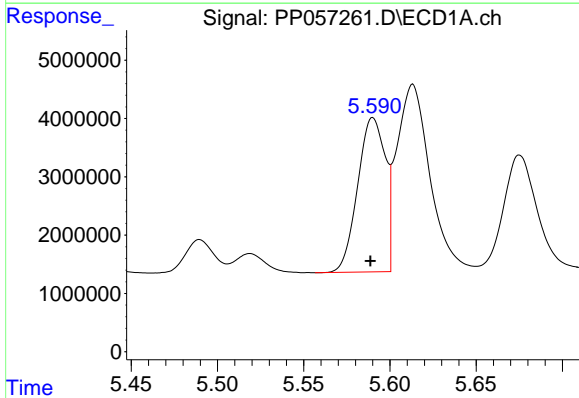
R.T.: 5.867 min  
 Delta R.T.: 0.002 min  
 Response: 21538883  
 Conc: 1096.38 ng/ml

Instrument :  
 ECD\_P  
 ClientSampleId :



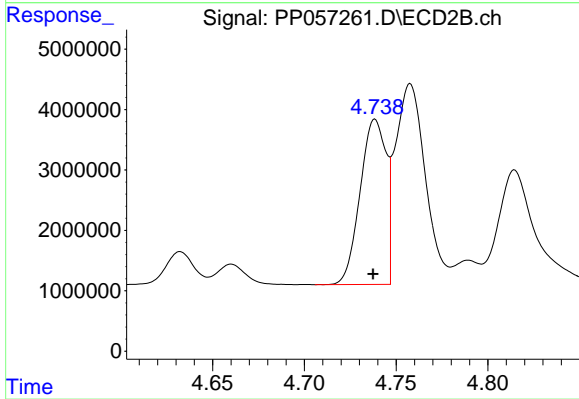
#15 AR-1232-5

R.T.: 5.194 min  
 Delta R.T.: 0.000 min  
 Response: 23318527  
 Conc: 1053.08 ng/ml



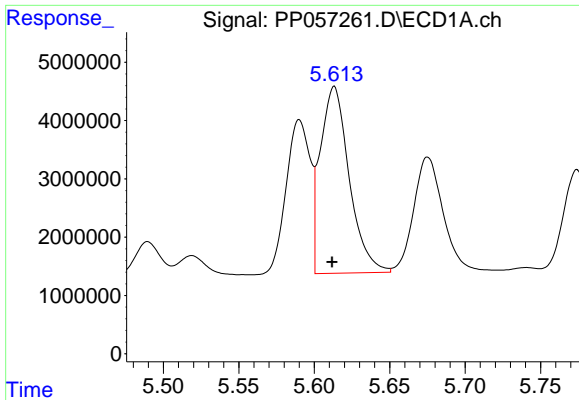
#16 AR-1242-1

R.T.: 5.590 min  
 Delta R.T.: 0.001 min  
 Response: 29413077  
 Conc: 598.10 ng/ml



#16 AR-1242-1

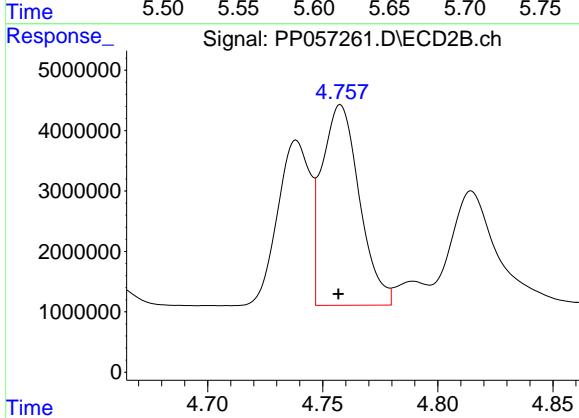
R.T.: 4.739 min  
 Delta R.T.: 0.001 min  
 Response: 26899760  
 Conc: 597.63 ng/ml



#17 AR-1242-2

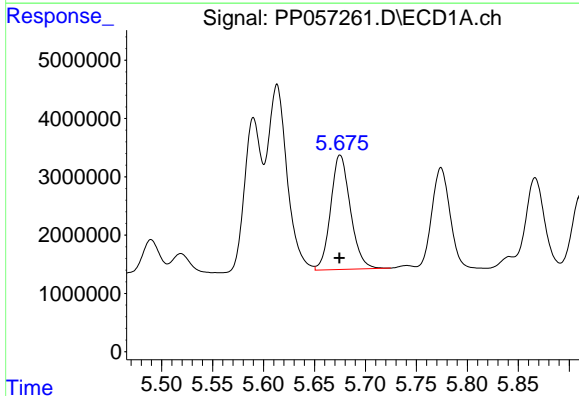
R.T.: 5.613 min  
 Delta R.T.: 0.001 min  
 Response: 42651720  
 Conc: 598.32 ng/ml

Instrument :  
 ECD\_P  
 ClientSampleId :



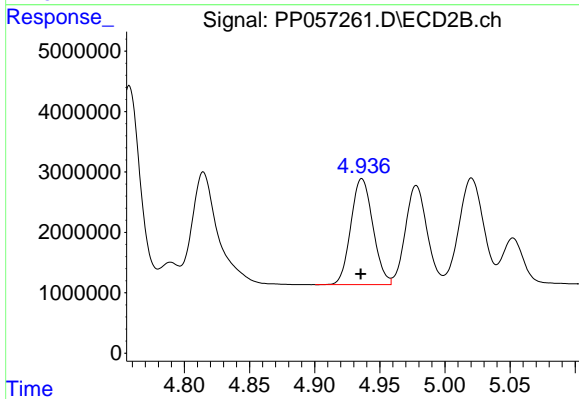
#17 AR-1242-2

R.T.: 4.758 min  
 Delta R.T.: 0.000 min  
 Response: 37631279  
 Conc: 606.28 ng/ml



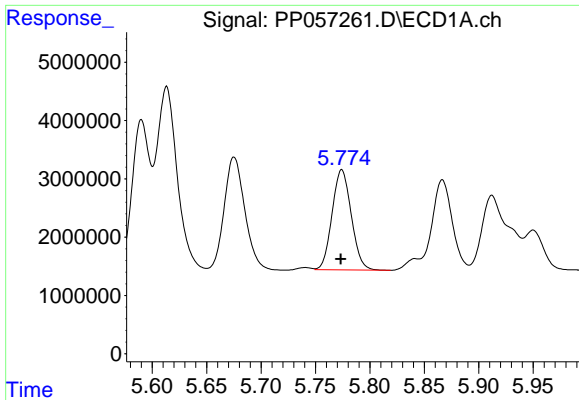
#18 AR-1242-3

R.T.: 5.675 min  
 Delta R.T.: 0.000 min  
 Response: 26444440  
 Conc: 590.10 ng/ml



#18 AR-1242-3

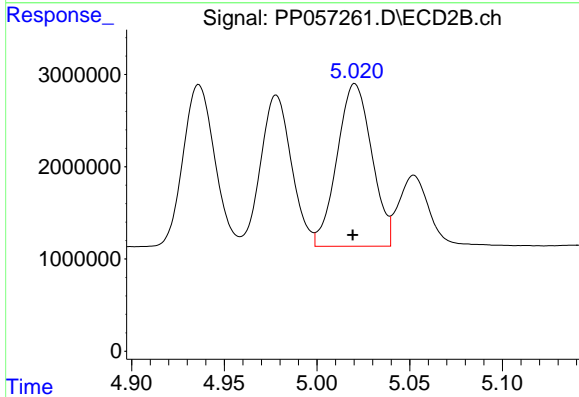
R.T.: 4.936 min  
 Delta R.T.: 0.000 min  
 Response: 20702786  
 Conc: 598.97 ng/ml



#19 AR-1242-4

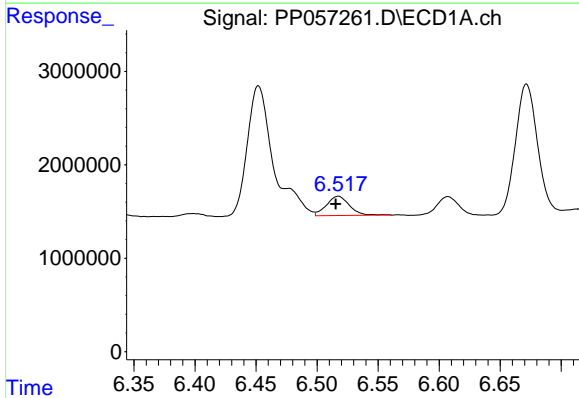
R.T.: 5.774 min  
 Delta R.T.: 0.000 min  
 Response: 21072284  
 Conc: 585.50 ng/ml

Instrument :  
 ECD\_P  
 ClientSampleId :



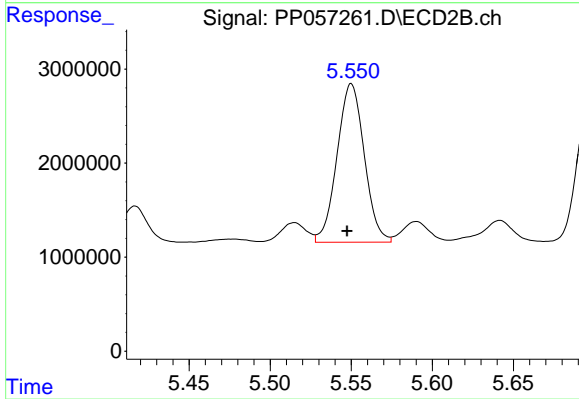
#19 AR-1242-4

R.T.: 5.020 min  
 Delta R.T.: 0.001 min  
 Response: 22983529  
 Conc: 585.54 ng/ml



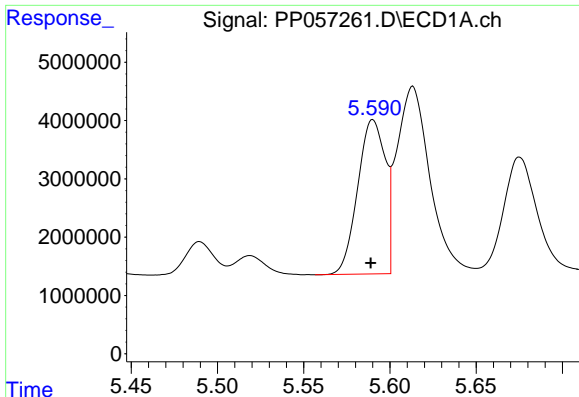
#20 AR-1242-5

R.T.: 6.517 min  
 Delta R.T.: 0.002 min  
 Response: 2693317  
 Conc: 85.18 ng/ml



#20 AR-1242-5

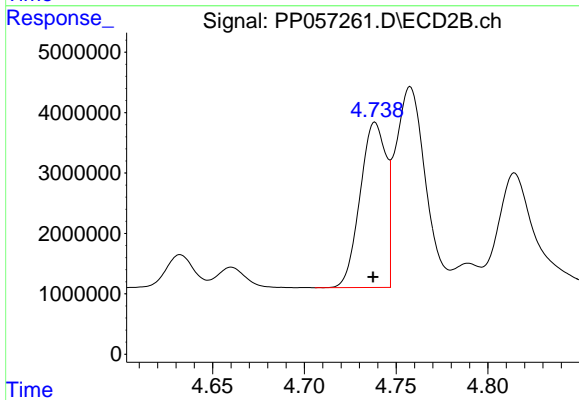
R.T.: 5.550 min  
 Delta R.T.: 0.003 min  
 Response: 19718335  
 Conc: 451.56 ng/ml



#21 AR-1248-1

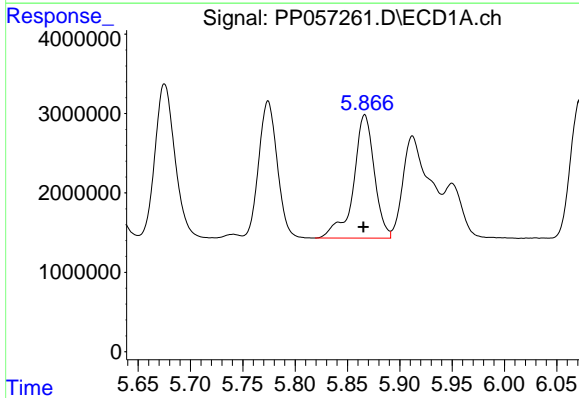
R.T.: 5.590 min  
 Delta R.T.: 0.001 min  
 Response: 29413077  
 Conc: 799.09 ng/ml

Instrument :  
 ECD\_P  
 ClientSampleId :



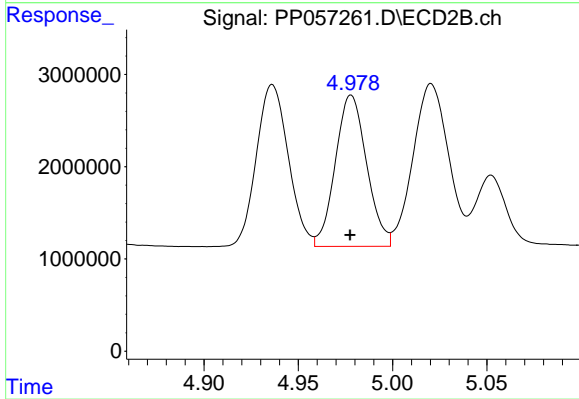
#21 AR-1248-1

R.T.: 4.739 min  
 Delta R.T.: 0.000 min  
 Response: 26899760  
 Conc: 787.11 ng/ml



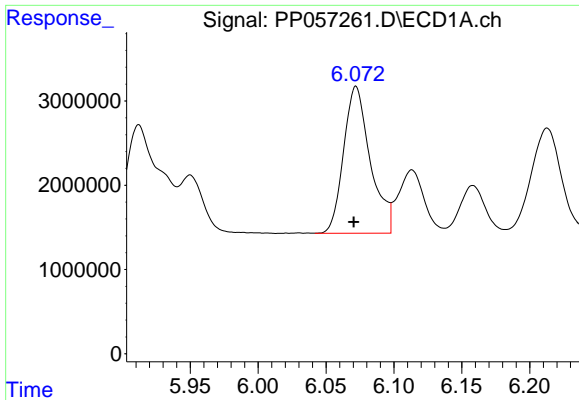
#22 AR-1248-2

R.T.: 5.867 min  
 Delta R.T.: 0.001 min  
 Response: 21538883  
 Conc: 339.93 ng/ml



#22 AR-1248-2

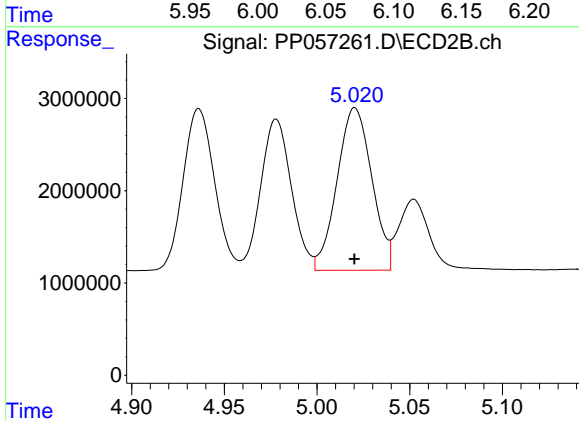
R.T.: 4.978 min  
 Delta R.T.: 0.000 min  
 Response: 18943717  
 Conc: 341.88 ng/ml



#23 AR-1248-3

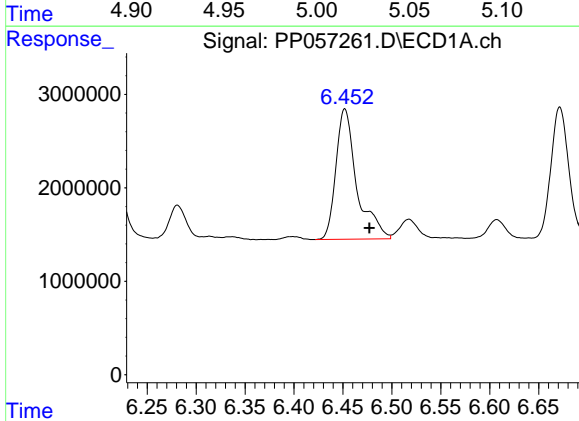
R.T.: 6.072 min  
 Delta R.T.: 0.002 min  
 Response: 23881513  
 Conc: 360.72 ng/ml

Instrument :  
 ECD\_P  
 ClientSampleId :



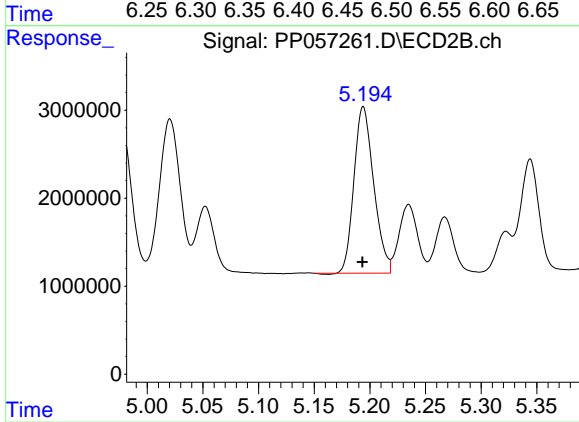
#23 AR-1248-3

R.T.: 5.020 min  
 Delta R.T.: 0.000 min  
 Response: 22983529  
 Conc: 399.10 ng/ml



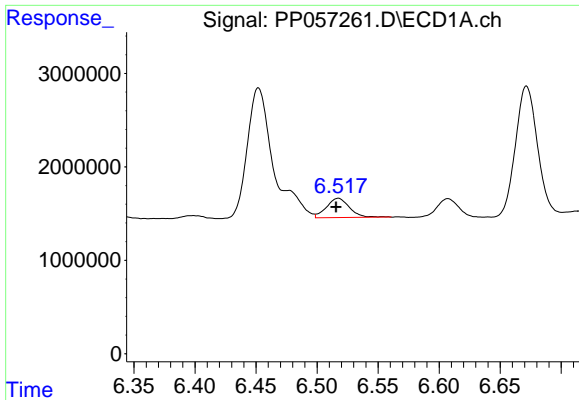
#24 AR-1248-4

R.T.: 6.452 min  
 Delta R.T.: -0.025 min  
 Response: 20811535  
 Conc: 370.27 ng/ml



#24 AR-1248-4

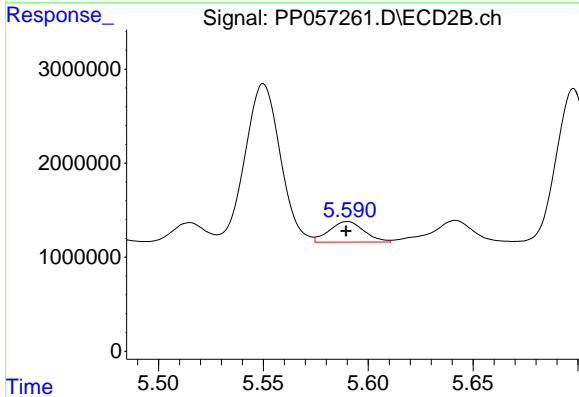
R.T.: 5.194 min  
 Delta R.T.: 0.000 min  
 Response: 23318527  
 Conc: 352.47 ng/ml



#25 AR-1248-5

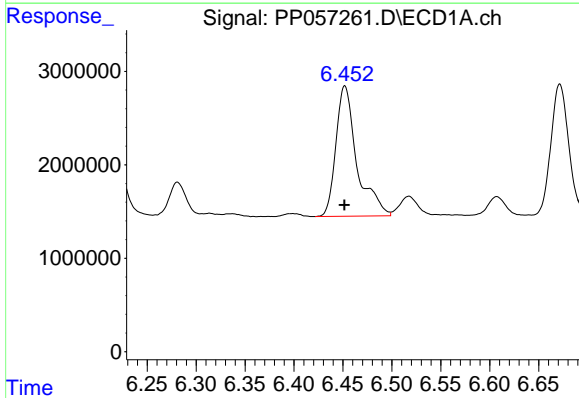
R.T.: 6.517 min  
 Delta R.T.: 0.002 min  
 Response: 2693317  
 Conc: 49.36 ng/ml

Instrument :  
 ECD\_P  
 ClientSampleId :



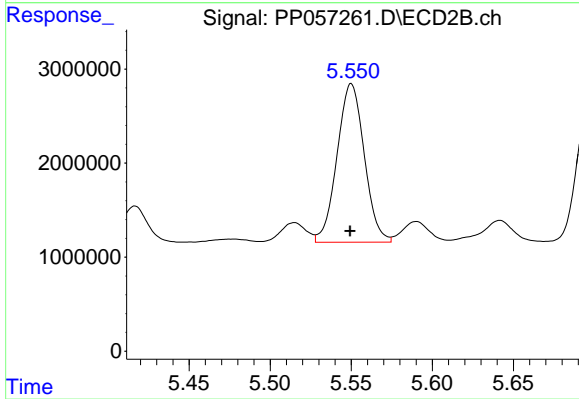
#25 AR-1248-5

R.T.: 5.590 min  
 Delta R.T.: 0.000 min  
 Response: 2528513  
 Conc: 44.43 ng/ml



#26 AR-1254-1

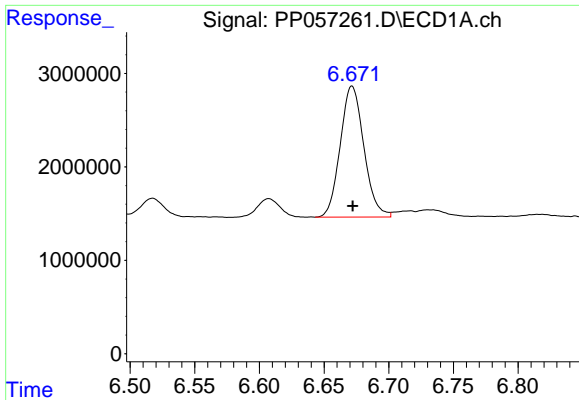
R.T.: 6.452 min  
 Delta R.T.: 0.000 min  
 Response: 20811535  
 Conc: 276.77 ng/ml



#26 AR-1254-1

R.T.: 5.550 min  
 Delta R.T.: 0.000 min  
 Response: 19718335  
 Conc: 196.85 ng/ml

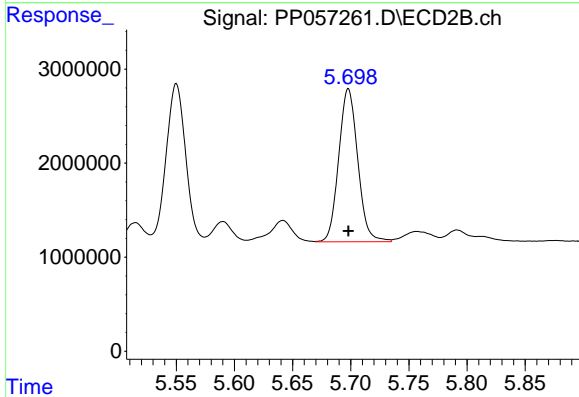




#27 AR-1254-2

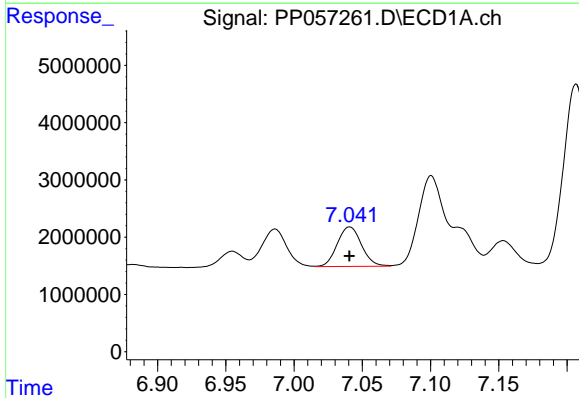
R.T.: 6.672 min  
 Delta R.T.: 0.000 min  
 Response: 17857558  
 Conc: 169.58 ng/ml

Instrument :  
 ECD\_P  
 ClientSampleId :



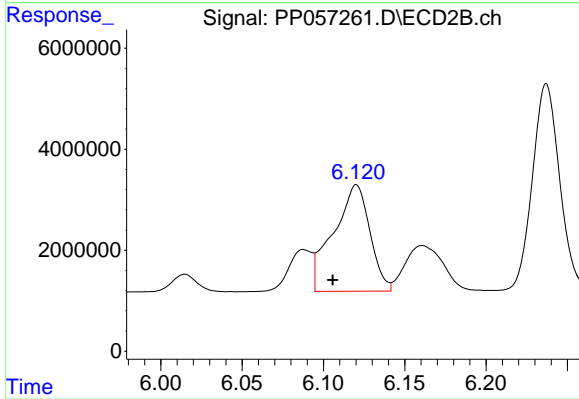
#27 AR-1254-2

R.T.: 5.698 min  
 Delta R.T.: 0.000 min  
 Response: 18580324  
 Conc: 211.12 ng/ml



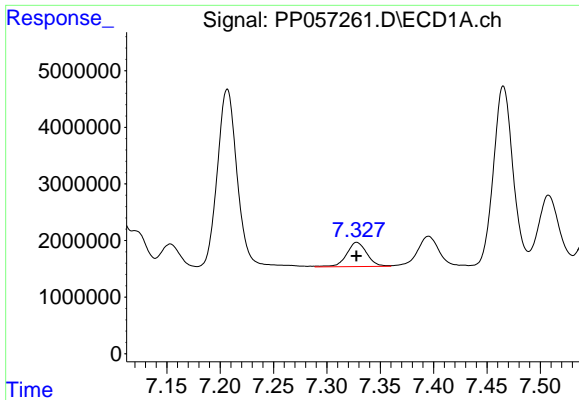
#28 AR-1254-3

R.T.: 7.041 min  
 Delta R.T.: 0.000 min  
 Response: 8560036  
 Conc: 87.71 ng/ml



#28 AR-1254-3

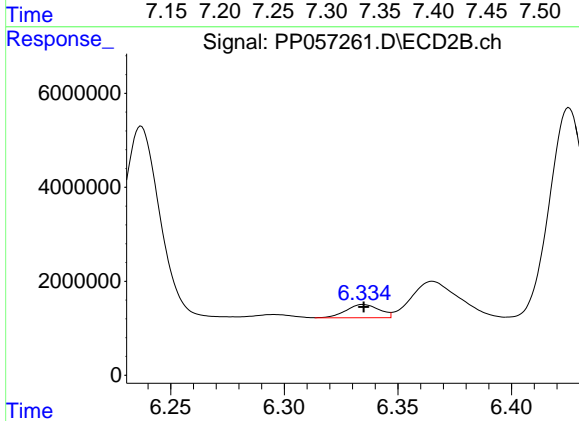
R.T.: 6.120 min  
 Delta R.T.: 0.014 min  
 Response: 32920393  
 Conc: 240.20 ng/ml



#29 AR-1254-4

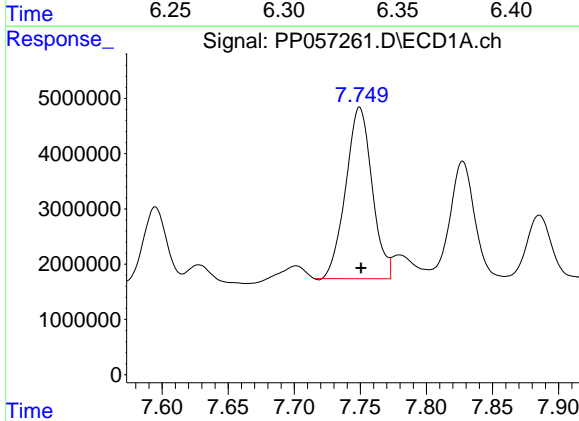
R.T.: 7.328 min  
 Delta R.T.: 0.000 min  
 Response: 5683293  
 Conc: 96.87 ng/ml

Instrument :  
 ECD\_P  
 ClientSampleId :



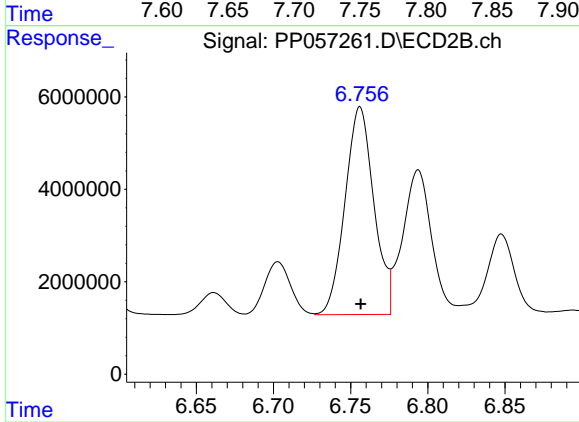
#29 AR-1254-4

R.T.: 6.335 min  
 Delta R.T.: 0.000 min  
 Response: 2862937  
 Conc: 37.99 ng/ml



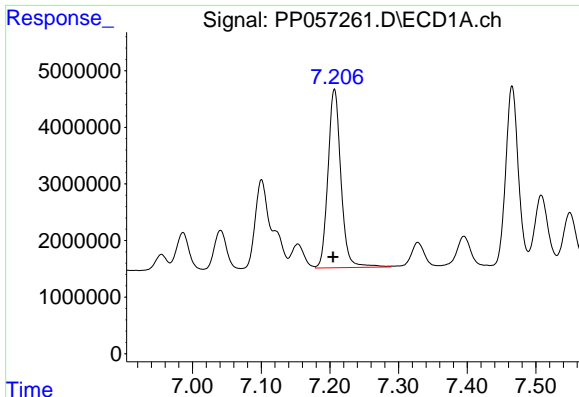
#30 AR-1254-5

R.T.: 7.749 min  
 Delta R.T.: -0.001 min  
 Response: 43085184  
 Conc: 681.39 ng/ml



#30 AR-1254-5

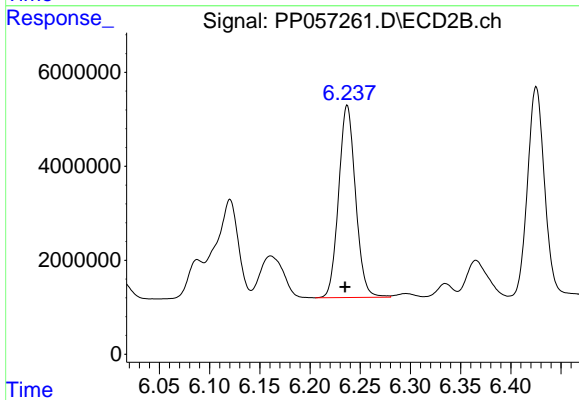
R.T.: 6.756 min  
 Delta R.T.: 0.000 min  
 Response: 58493414  
 Conc: 505.57 ng/ml



#31 AR-1260-1

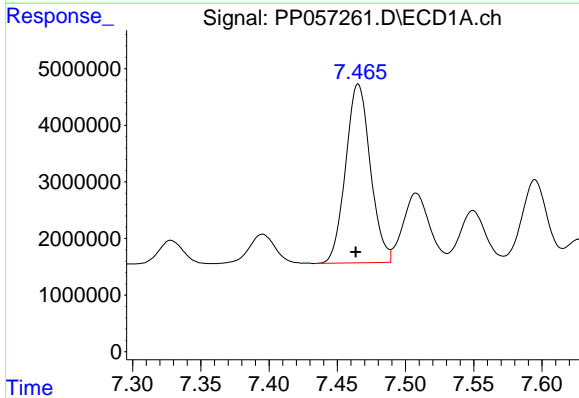
R.T.: 7.207 min  
 Delta R.T.: 0.002 min  
 Response: 41409437  
 Conc: 478.59 ng/ml

Instrument :  
 ECD\_P  
 ClientSampleId :



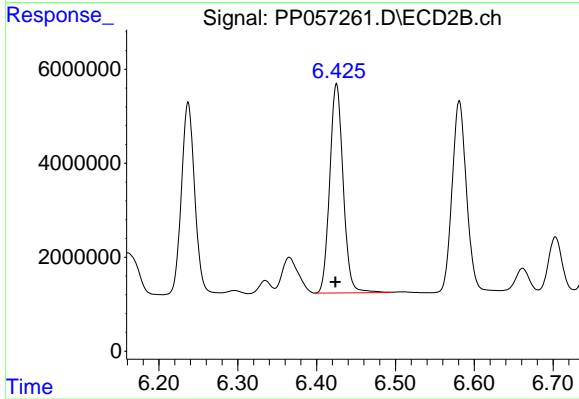
#31 AR-1260-1

R.T.: 6.237 min  
 Delta R.T.: 0.002 min  
 Response: 47930136  
 Conc: 460.27 ng/ml



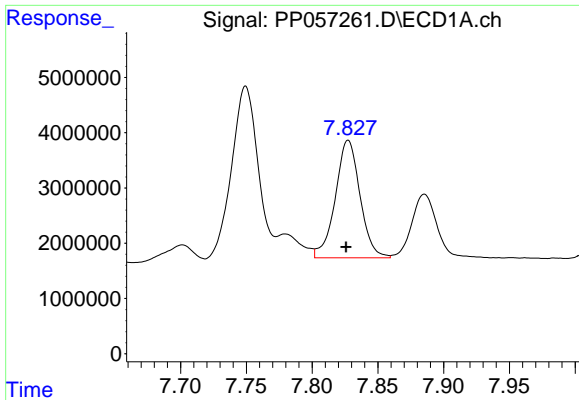
#32 AR-1260-2

R.T.: 7.465 min  
 Delta R.T.: 0.002 min  
 Response: 39802680  
 Conc: 483.95 ng/ml



#32 AR-1260-2

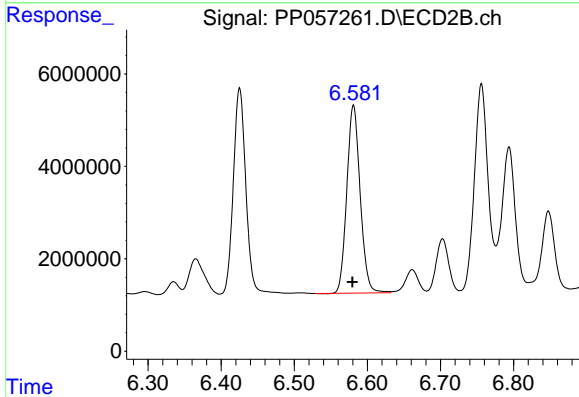
R.T.: 6.425 min  
 Delta R.T.: 0.002 min  
 Response: 52757553  
 Conc: 460.99 ng/ml



#33 AR-1260-3

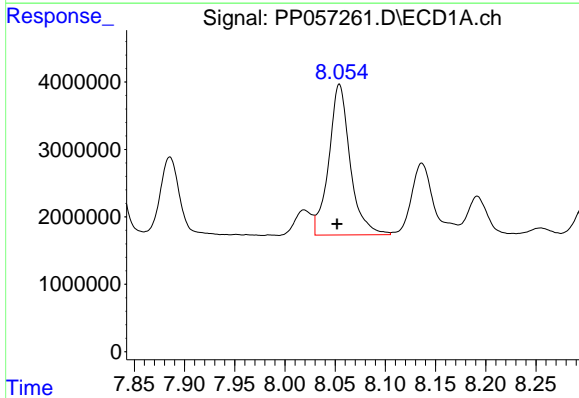
R.T.: 7.827 min  
 Delta R.T.: 0.002 min  
 Response: 27798588  
 Conc: 412.17 ng/ml

Instrument :  
 ECD\_P  
 ClientSampleId :



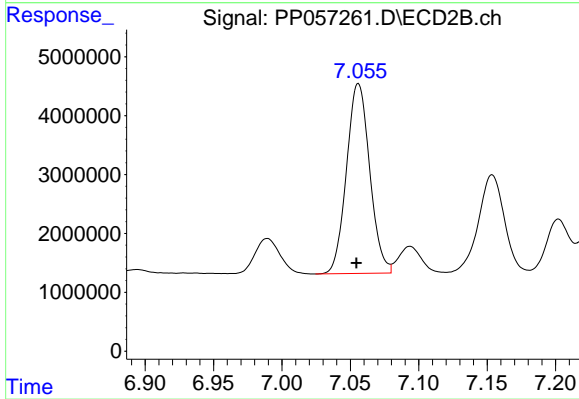
#33 AR-1260-3

R.T.: 6.581 min  
 Delta R.T.: 0.001 min  
 Response: 51582166  
 Conc: 457.32 ng/ml



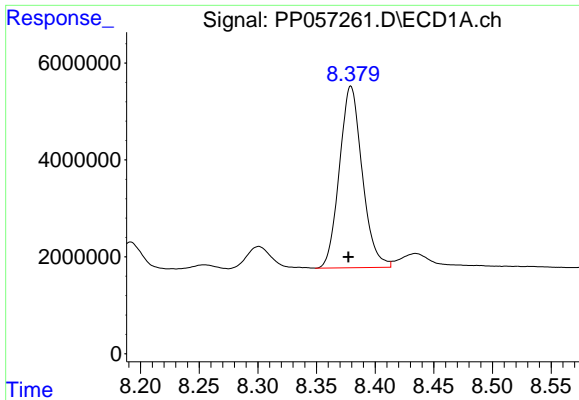
#34 AR-1260-4

R.T.: 8.054 min  
 Delta R.T.: 0.002 min  
 Response: 33052481  
 Conc: 437.15 ng/ml



#34 AR-1260-4

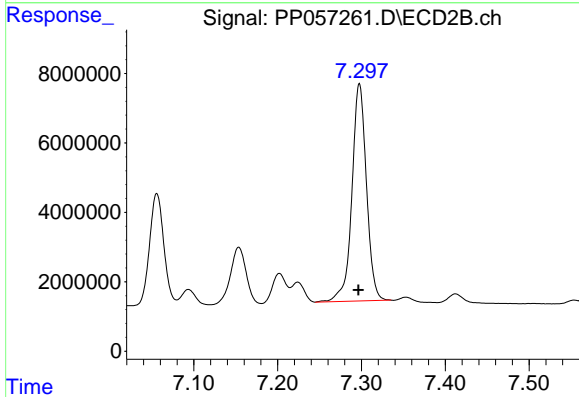
R.T.: 7.056 min  
 Delta R.T.: 0.002 min  
 Response: 38105486  
 Conc: 413.79 ng/ml



#35 AR-1260-5

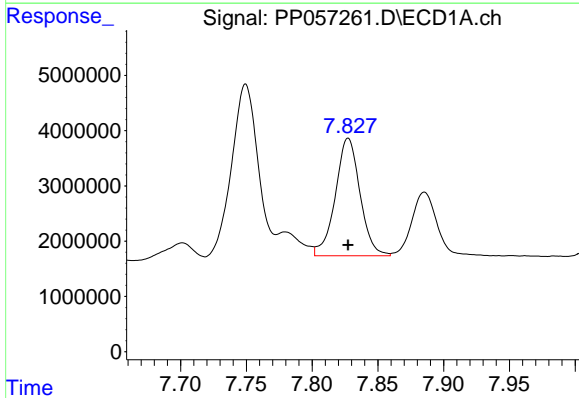
R.T.: 8.379 min  
 Delta R.T.: 0.002 min  
 Response: 50740626  
 Conc: 435.65 ng/ml

Instrument :  
 ECD\_P  
 ClientSampleId :



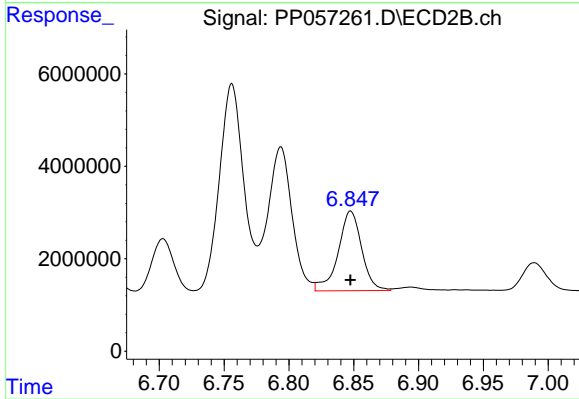
#35 AR-1260-5

R.T.: 7.298 min  
 Delta R.T.: 0.001 min  
 Response: 75416419  
 Conc: 420.51 ng/ml



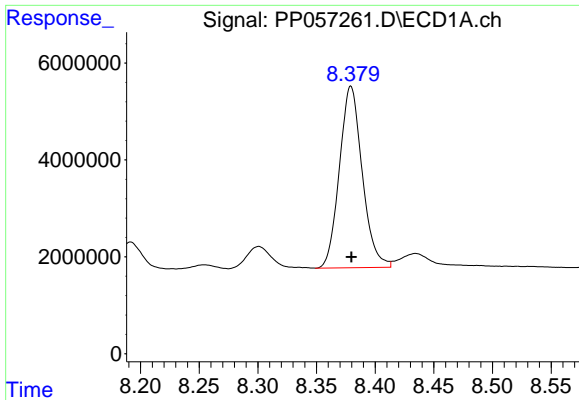
#36 AR-1262-1

R.T.: 7.827 min  
 Delta R.T.: 0.000 min  
 Response: 27798588  
 Conc: 305.23 ng/ml



#36 AR-1262-1

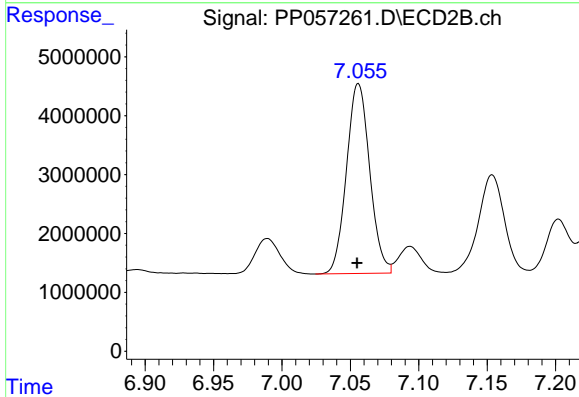
R.T.: 6.848 min  
 Delta R.T.: 0.000 min  
 Response: 21781350  
 Conc: 403.09 ng/ml



#37 AR-1262-2

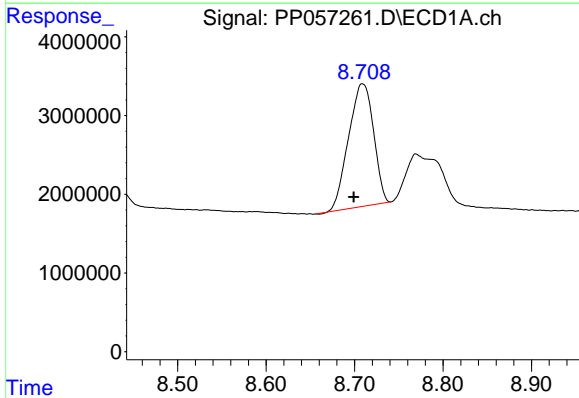
R.T.: 8.379 min  
 Delta R.T.: 0.000 min  
 Response: 50740626  
 Conc: 407.14 ng/ml

Instrument :  
 ECD\_P  
 ClientSampleId :



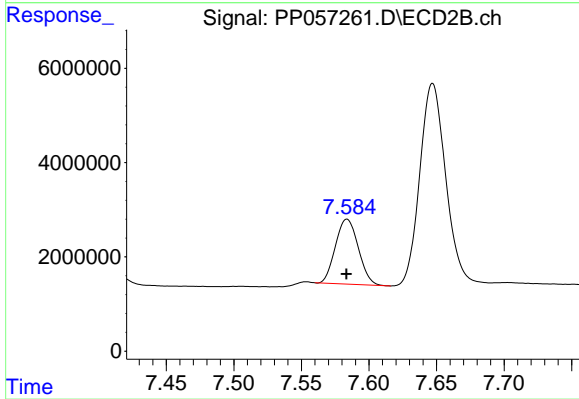
#37 AR-1262-2

R.T.: 7.056 min  
 Delta R.T.: 0.001 min  
 Response: 38105486  
 Conc: 339.86 ng/ml



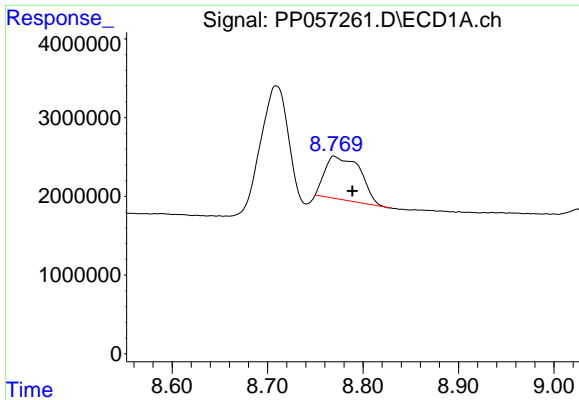
#38 AR-1262-3

R.T.: 8.709 min  
 Delta R.T.: 0.010 min  
 Response: 30580217  
 Conc: 344.63 ng/ml



#38 AR-1262-3

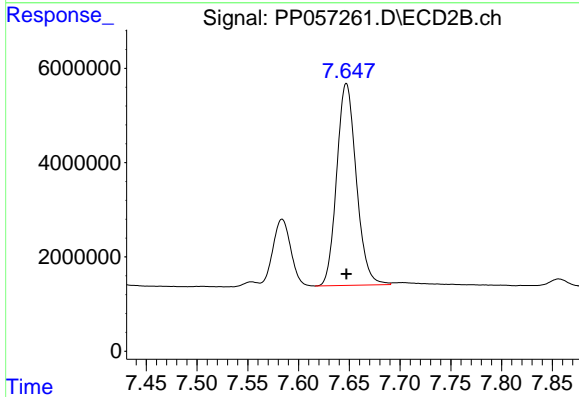
R.T.: 7.584 min  
 Delta R.T.: 0.000 min  
 Response: 16263556  
 Conc: 204.95 ng/ml



#39 AR-1262-4

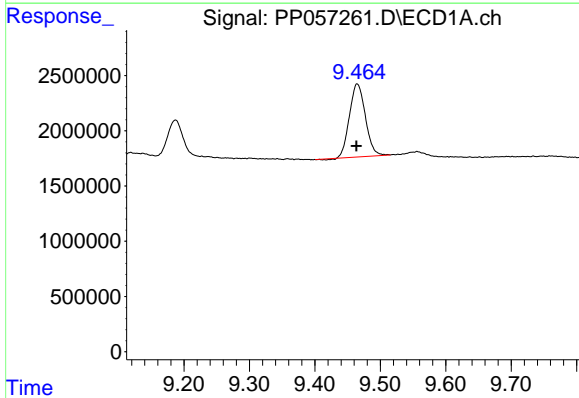
R.T.: 8.770 min  
 Delta R.T.: -0.019 min  
 Response: 13953974  
 Conc: 213.87 ng/ml

Instrument :  
 ECD\_P  
 ClientSampleId :



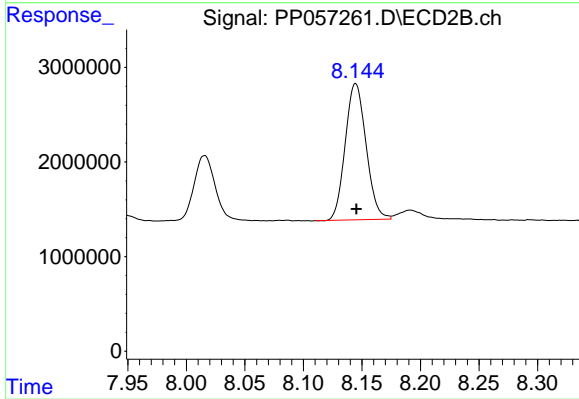
#39 AR-1262-4

R.T.: 7.647 min  
 Delta R.T.: 0.000 min  
 Response: 57520201  
 Conc: 389.06 ng/ml



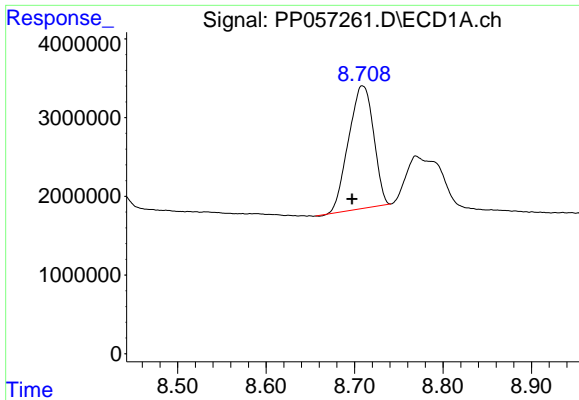
#40 AR-1262-5

R.T.: 9.465 min  
 Delta R.T.: 0.000 min  
 Response: 11090299  
 Conc: 279.88 ng/ml



#40 AR-1262-5

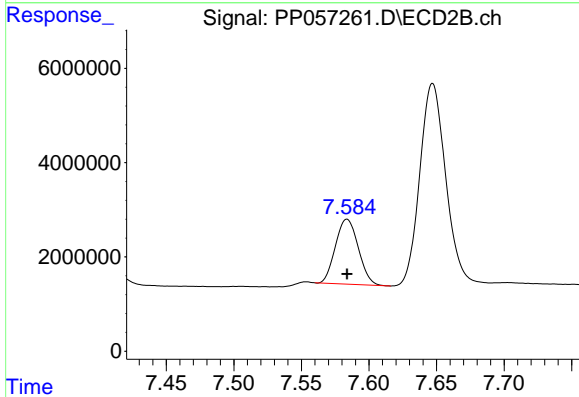
R.T.: 8.145 min  
 Delta R.T.: 0.000 min  
 Response: 17869816  
 Conc: 274.18 ng/ml



#41 AR-1268-1

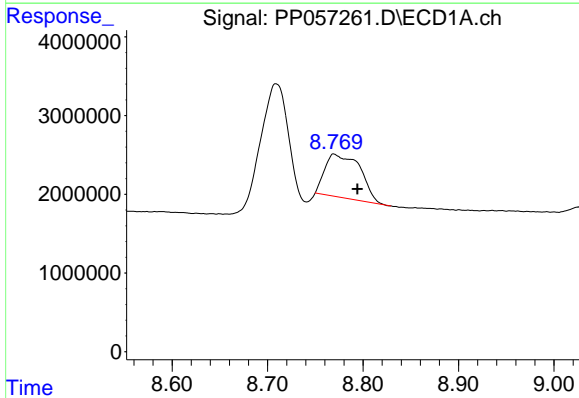
R.T.: 8.709 min  
 Delta R.T.: 0.012 min  
 Response: 30580217  
 Conc: 172.60 ng/ml

Instrument :  
 ECD\_P  
 ClientSampleId :



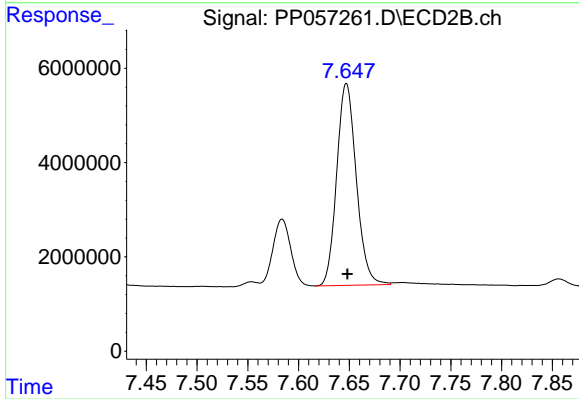
#41 AR-1268-1

R.T.: 7.584 min  
 Delta R.T.: 0.000 min  
 Response: 16263556  
 Conc: 65.40 ng/ml



#42 AR-1268-2

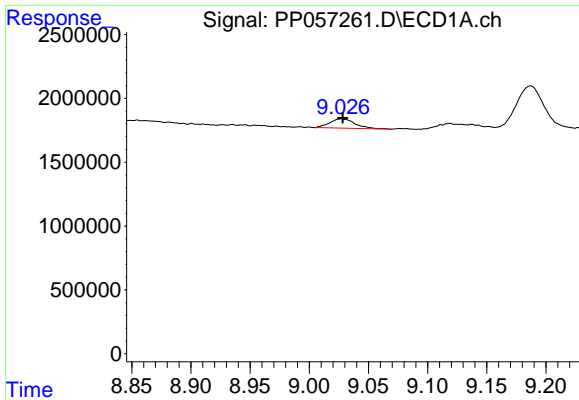
R.T.: 8.770 min  
 Delta R.T.: -0.025 min  
 Response: 13953974  
 Conc: 96.79 ng/ml



#42 AR-1268-2

R.T.: 7.647 min  
 Delta R.T.: 0.000 min  
 Response: 57520201  
 Conc: 252.32 ng/ml

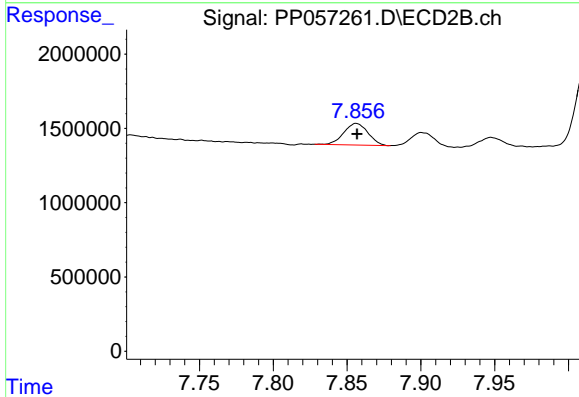




#43 AR-1268-3

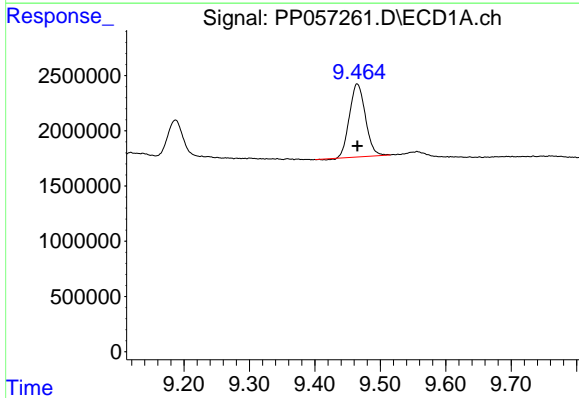
R.T.: 9.027 min  
 Delta R.T.: -0.002 min  
 Response: 1076736  
 Conc: 6.87 ng/ml

Instrument :  
 ECD\_P  
 ClientSampleId :



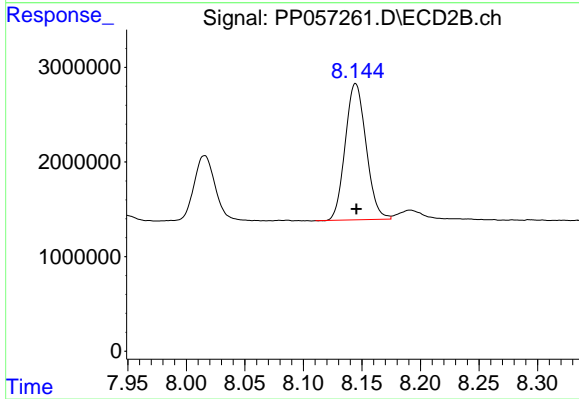
#43 AR-1268-3

R.T.: 7.856 min  
 Delta R.T.: 0.000 min  
 Response: 1662316  
 Conc: 7.79 ng/ml



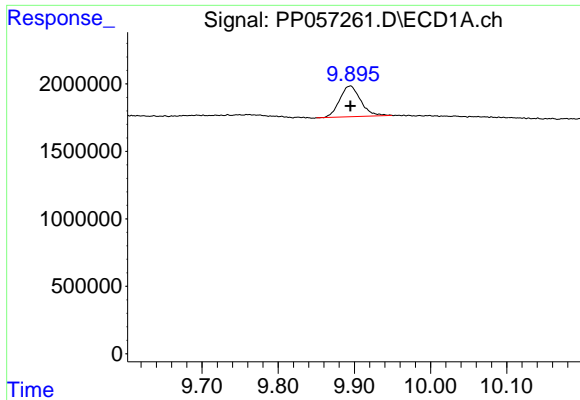
#44 AR-1268-4

R.T.: 9.465 min  
 Delta R.T.: 0.000 min  
 Response: 11090299  
 Conc: 238.55 ng/ml



#44 AR-1268-4

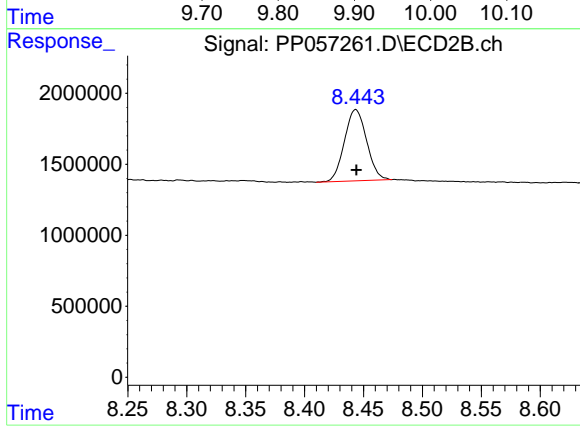
R.T.: 8.145 min  
 Delta R.T.: 0.000 min  
 Response: 17869816  
 Conc: 238.47 ng/ml



#45 AR-1268-5

R.T.: 9.895 min  
Delta R.T.: 0.000 min  
Response: 4388664  
Conc: 11.22 ng/ml

Instrument :  
ECD\_P  
ClientSampleId :



#45 AR-1268-5

R.T.: 8.443 min  
Delta R.T.: 0.000 min  
Response: 6586188  
Conc: 12.07 ng/ml