

Data Path : Z:\pestpcbsrv\HPCHEM1\ECD_P\Data\PP042723\
 Data File : PP057291.D
 Signal(s) : Signal #1: ECD1A.ch Signal #2: ECD2B.ch
 Acq On : 27 Apr 2023 19:26
 Operator : YP\AJ
 Sample : 02519-04 10X
 Misc :
 ALS Vial : 18 Sample Multiplier: 1

Instrument :
 ECD_P
 ClientSampleId :

Integration File signal 1: autoint1.e
 Integration File signal 2: autoint2.e
 Quant Time: Apr 27 21:28:07 2023
 Quant Method : Z:\pestpcbsrv\HPCHEM1\ECD_P\methods\PP042623.M
 Quant Title : GC EXTRACTABLES
 QLast Update : Thu Apr 27 04:11:22 2023
 Response via : Initial Calibration
 Integrator: ChemStation

Volume Inj. : 2 µl
 Signal #1 Phase : ZB-MR1 Signal #2 Phase: ZB-MR2
 Signal #1 Info : 30Mx0.32mmx 0.50µ Signal #2 Info : 30M x 0.32mm x 0.25µm

Compound	RT#1	RT#2	Resp#1	Resp#2	ng/ml	ng/ml
System Monitoring Compounds						
1) SA Tetrachlo...	4.410	3.639	4132980	3316309	1.869	2.024
2) SA Decachlor...	10.244	8.701	4457933	12180991	3.350	7.106 #
Target Compounds						
3) L1 AR-1016-1	5.593	4.749	196621	2979003	3.372	55.999 #
4) L1 AR-1016-2	5.622	4.749	43954	2979003	0.514	40.254 #
5) L1 AR-1016-3	5.661	4.938	1312868	-920686	24.313	N.D. #
6) L1 AR-1016-4	5.765	4.985	20916	5431271	0.488	144.893 #
7) L1 AR-1016-5	6.060	5.206	6921404	492720	145.066	10.158 #
8) L2 AR-1221-1	4.619	3.845	783196	555841	30.080	27.064
9) L2 AR-1221-2	4.726f	3.953	1258938	3472070	65.769	223.257 #
10) L2 AR-1221-3	4.787	4.029	157588	2649852	2.764	56.051 #
11) L3 AR-1232-1	4.787	4.029	157588	2649852	3.215	65.926 #
12) L3 AR-1232-2	5.338f	4.749	1495485	2979003	59.226	82.781 #
14) L3 AR-1232-4	5.765	0.000	20916	0	1.027	N.D. #
15) L3 AR-1232-5	5.862	5.206	1407091	492720	71.624	22.252 #
16) L4 AR-1242-1	5.593	4.749	196621	2979003	3.998	66.185 #
17) L4 AR-1242-2	5.622	4.749	43954	2979003	0.617	47.995 #
18) L4 AR-1242-3	5.661	4.938	1312868	-920686	29.297	N.D. #
19) L4 AR-1242-4	5.765	0.000	20916	0	0.581	N.D. #
20) L4 AR-1242-5	6.522	5.559	638739	2686530	20.200	61.523 #
21) L5 AR-1248-1	5.593	4.749	196621	2979003	5.342	87.168 #
22) L5 AR-1248-2	5.862	4.985	1407091	5431271	22.207	98.018 #
23) L5 AR-1248-3	6.060	0.000	6921404	0	104.546	N.D. #
24) L5 AR-1248-4	6.476	5.206	5945098	492720	105.772	7.448 #
25) L5 AR-1248-5	6.522	0.000	638739	0	11.706	N.D. #
26) L6 AR-1254-1	6.476f	5.559	5945098	2686530	79.062	26.820 #
27) L6 AR-1254-2	6.687	5.705	1356227	384555	12.879	4.369 #
28) L6 AR-1254-3	7.062f	6.119	1270073	2975308	13.013	21.709 #
29) L6 AR-1254-4	7.305f	6.330	925308	598833	15.772	7.945 #
30) L6 AR-1254-5	7.750	6.757	72806	109498	1.151	0.946
31) L7 AR-1260-1	7.207	6.219f	1407736	1794584	16.270	17.233
32) L7 AR-1260-2	0.000	6.411	0	861506	N.D.	7.528 #
33) L7 AR-1260-3	7.808f	6.577	816363	1679265	12.104	14.888
34) L7 AR-1260-4	8.061	7.057	4489140	850812	59.373	9.239 #
35) L7 AR-1260-5	8.374	0.000	2393725	0	20.552	N.D. #
36) L8 AR-1262-1	7.808f	6.863f	816363	2395164	8.964	44.325 #
37) L8 AR-1262-2	8.374	7.057	2393725	850812	19.207	7.588 #
38) L8 AR-1262-3	8.716f	7.585	6818476	-34419	76.841	N.D. #
39) L8 AR-1262-4	8.784	7.661	1279844	795638	19.616	5.382 #
40) L8 AR-1262-5	0.000	8.127f	0	1109472	N.D.	17.023 #
41) L9 AR-1268-1	8.716f	7.585	6818476	-34419	38.484	N.D. #
42) L9 AR-1268-2	8.784	7.661	1279844	795638	8.877	3.490 #

Data Path : Z:\pestpcbsrv\HPCHEM1\ECD_P\Data\PP042723\
 Data File : PP057291.D
 Signal(s) : Signal #1: ECD1A.ch Signal #2: ECD2B.ch
 Acq On : 27 Apr 2023 19:26
 Operator : YP\AJ
 Sample : 02519-04 10X
 Misc :
 ALS Vial : 18 Sample Multiplier: 1

Instrument :
 ECD_P
 ClientSampleId :

Integration File signal 1: autoint1.e
 Integration File signal 2: autoint2.e
 Quant Time: Apr 27 21:28:07 2023
 Quant Method : Z:\pestpcbsrv\HPCHEM1\ECD_P\methods\PP042623.M
 Quant Title : GC EXTRACTABLES
 QLast Update : Thu Apr 27 04:11:22 2023
 Response via : Initial Calibration
 Integrator: ChemStation

Volume Inj. : 2 µl
 Signal #1 Phase : ZB-MR1 Signal #2 Phase: ZB-MR2
 Signal #1 Info : 30Mx0.32mmx 0.50µ Signal #2 Info : 30M x 0.32mm x 0.25µm

	Compound	RT#1	RT#2	Resp#1	Resp#2	ng/ml	ng/ml
43)	L9 AR-1268-3	9.020	7.846	11758627	-92506	74.972	N.D. #
44)	L9 AR-1268-4	0.000	8.127f	0	1109472	N.D.	14.806 #
45)	L9 AR-1268-5	9.900	8.432	-303841	5035128	N.D.	9.228 #

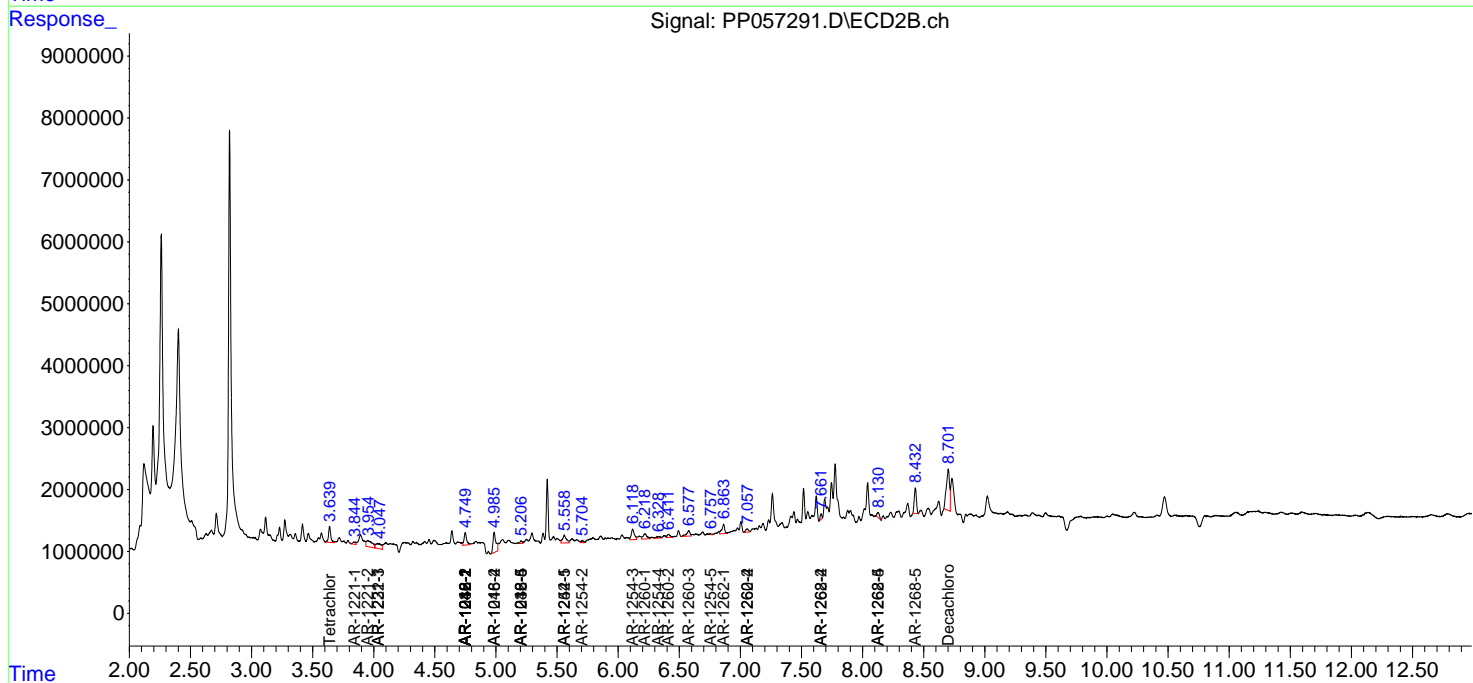
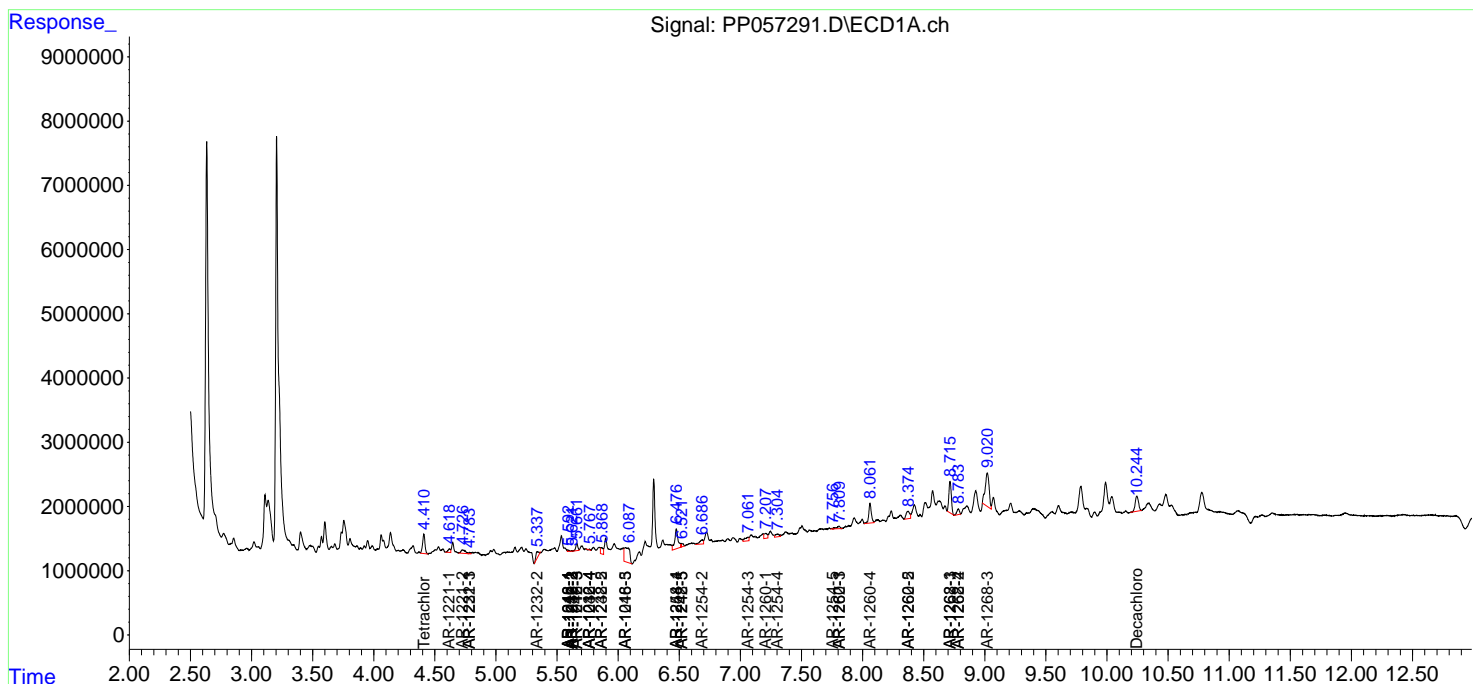
(f)=RT Delta > 1/2 Window (#)=Amounts differ by > 25% (m)=manual int.

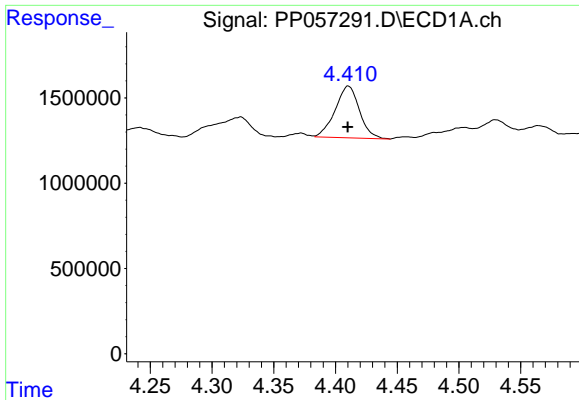
Data Path : Z:\pestpcbsrv\HPCHEM1\ECD_P\Data\PP042723\
 Data File : PP057291.D
 Signal(s) : Signal #1: ECD1A.ch Signal #2: ECD2B.ch
 Acq On : 27 Apr 2023 19:26
 Operator : YP\AJ
 Sample : 02519-04 10X
 Misc :
 ALS Vial : 18 Sample Multiplier: 1

Instrument :
 ECD_P
 ClientSampleId :

Integration File signal 1: autoint1.e
 Integration File signal 2: autoint2.e
 Quant Time: Apr 27 21:28:07 2023
 Quant Method : Z:\pestpcbsrv\HPCHEM1\ECD_P\methods\PP042623.M
 Quant Title : GC EXTRACTABLES
 QLast Update : Thu Apr 27 04:11:22 2023
 Response via : Initial Calibration
 Integrator: ChemStation

Volume Inj. : 2 µl
 Signal #1 Phase : ZB-MR1 Signal #2 Phase: ZB-MR2
 Signal #1 Info : 30Mx0.32mmx 0.50µ Signal #2 Info : 30M x 0.32mm x 0.25µm

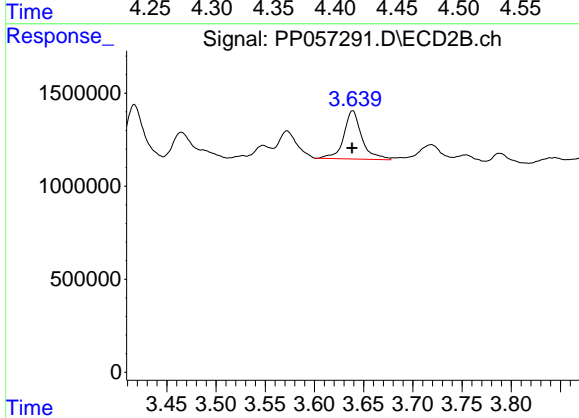




#1 Tetrachloro-m-xylene

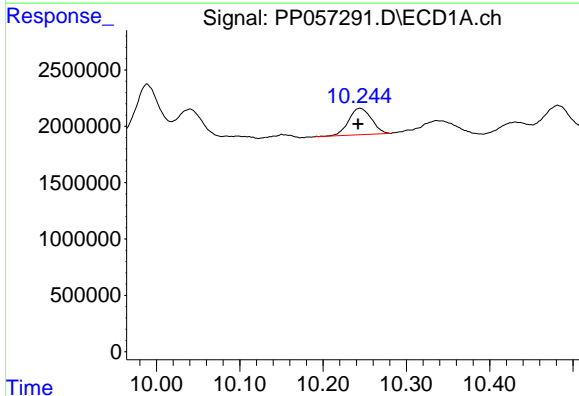
R.T.: 4.410 min
 Delta R.T.: 0.000 min
 Response: 4132980
 Conc: 1.87 ng/ml

Instrument :
 ECD_P
 ClientSampleId :



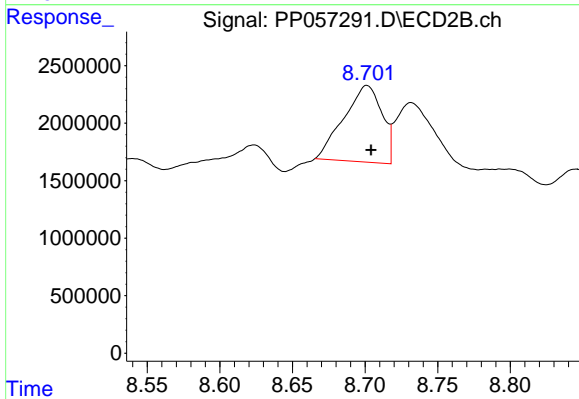
#1 Tetrachloro-m-xylene

R.T.: 3.639 min
 Delta R.T.: 0.000 min
 Response: 3316309
 Conc: 2.02 ng/ml



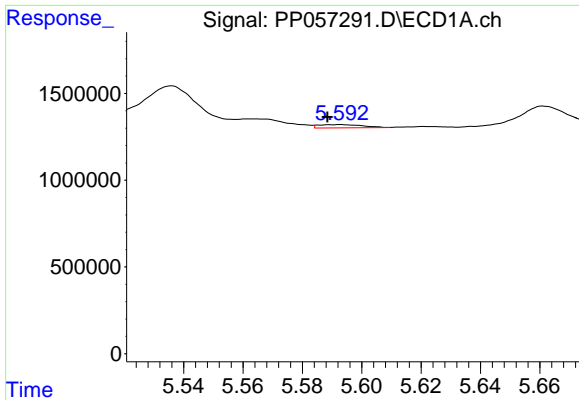
#2 Decachlorobiphenyl

R.T.: 10.244 min
 Delta R.T.: 0.002 min
 Response: 4457933
 Conc: 3.35 ng/ml



#2 Decachlorobiphenyl

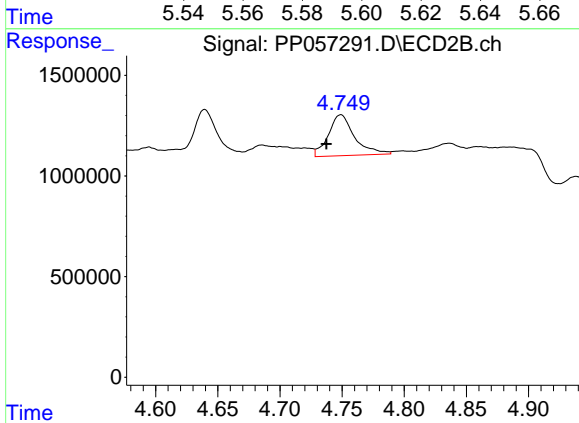
R.T.: 8.701 min
 Delta R.T.: -0.003 min
 Response: 12180991
 Conc: 7.11 ng/ml



#3 AR-1016-1

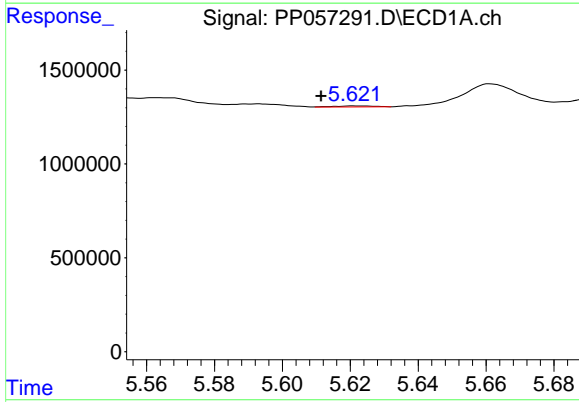
R.T.: 5.593 min
 Delta R.T.: 0.004 min
 Response: 196621
 Conc: 3.37 ng/ml

Instrument :
 ECD_P
 ClientSampleId :



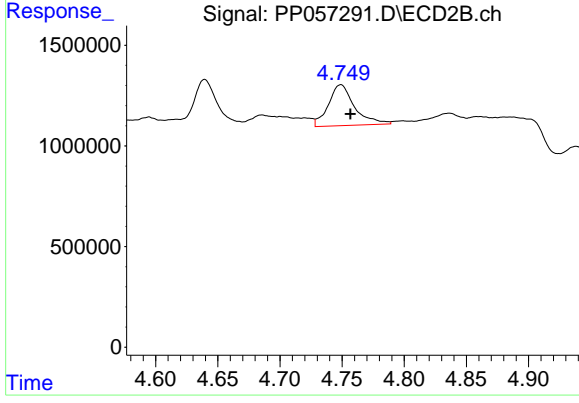
#3 AR-1016-1

R.T.: 4.749 min
 Delta R.T.: 0.012 min
 Response: 2979003
 Conc: 56.00 ng/ml



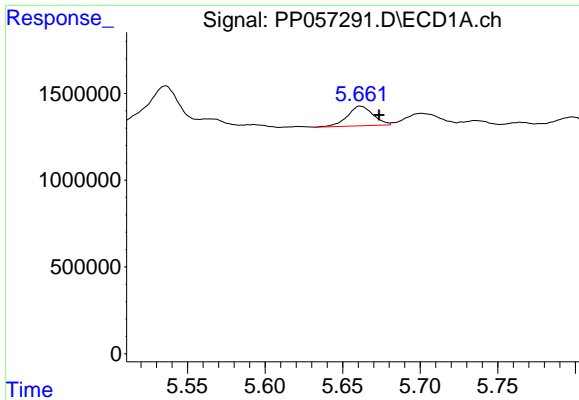
#4 AR-1016-2

R.T.: 5.622 min
 Delta R.T.: 0.010 min
 Response: 43954
 Conc: 0.51 ng/ml



#4 AR-1016-2

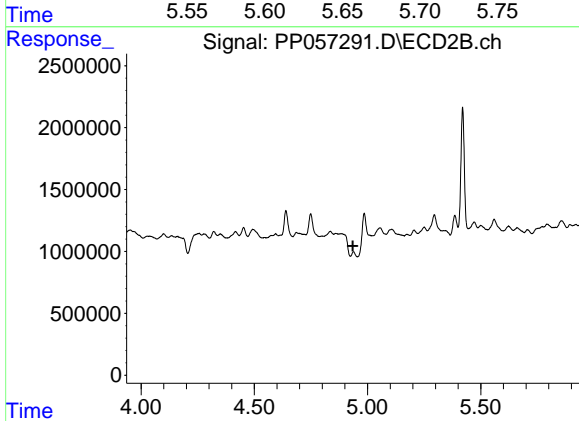
R.T.: 4.749 min
 Delta R.T.: -0.008 min
 Response: 2979003
 Conc: 40.25 ng/ml



#5 AR-1016-3

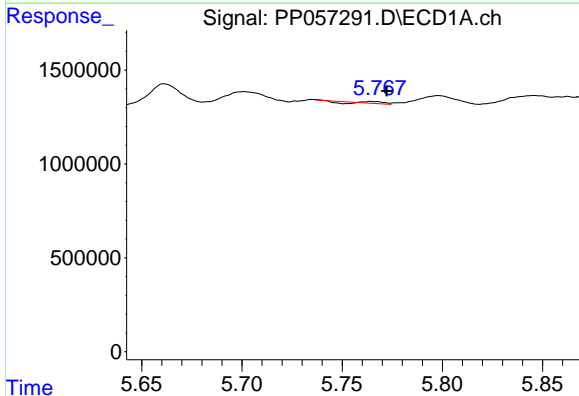
R.T.: 5.661 min
 Delta R.T.: -0.012 min
 Response: 1312868
 Conc: 24.31 ng/ml

Instrument :
 ECD_P
 ClientSampleId :



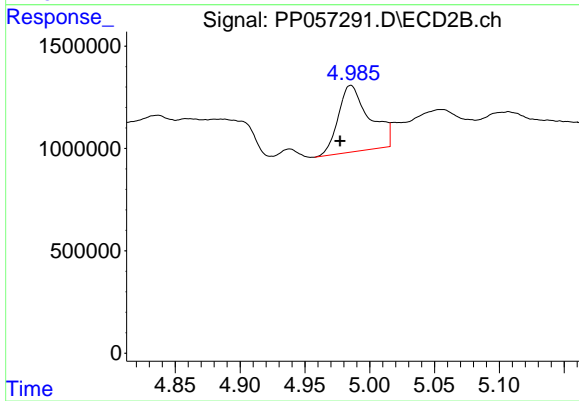
#5 AR-1016-3

R.T.: 4.938 min
 Delta R.T.: 0.003 min
 Response: -920686
 Conc: N.D.



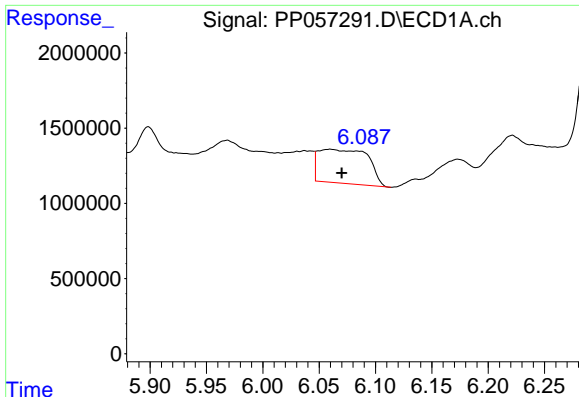
#6 AR-1016-4

R.T.: 5.765 min
 Delta R.T.: -0.007 min
 Response: 20916
 Conc: 0.49 ng/ml



#6 AR-1016-4

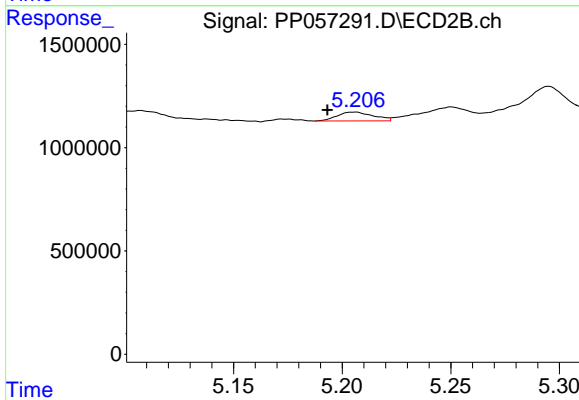
R.T.: 4.985 min
 Delta R.T.: 0.008 min
 Response: 5431271
 Conc: 144.89 ng/ml



#7 AR-1016-5

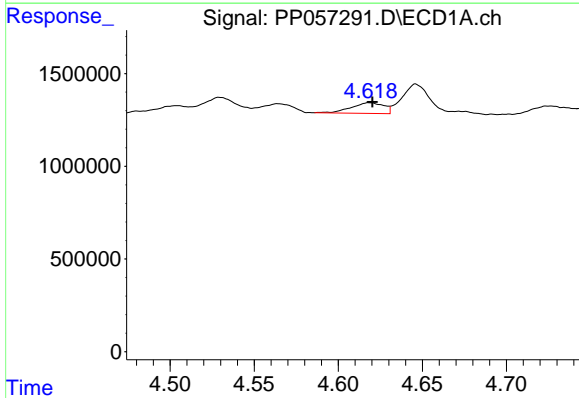
R.T.: 6.060 min
 Delta R.T.: -0.010 min
 Response: 6921404
 Conc: 145.07 ng/ml

Instrument :
 ECD_P
 ClientSampleId :



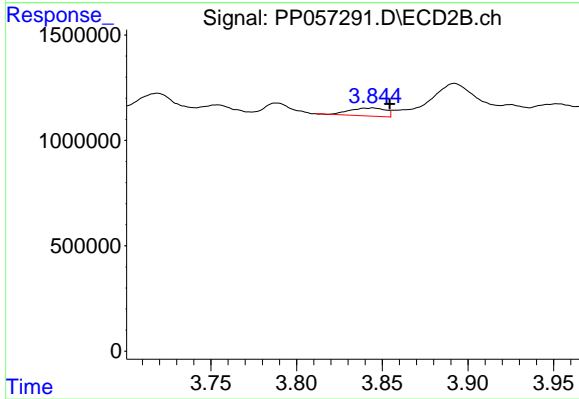
#7 AR-1016-5

R.T.: 5.206 min
 Delta R.T.: 0.012 min
 Response: 492720
 Conc: 10.16 ng/ml



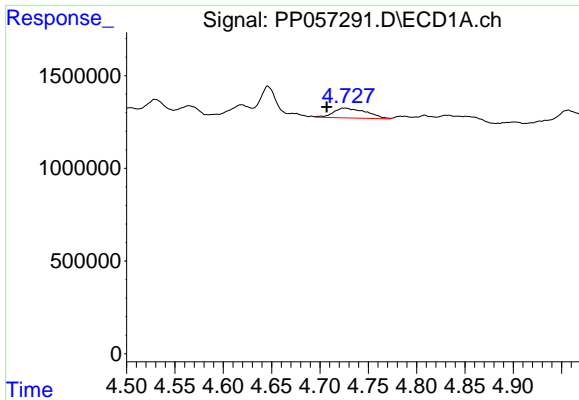
#8 AR-1221-1

R.T.: 4.619 min
 Delta R.T.: -0.002 min
 Response: 783196
 Conc: 30.08 ng/ml



#8 AR-1221-1

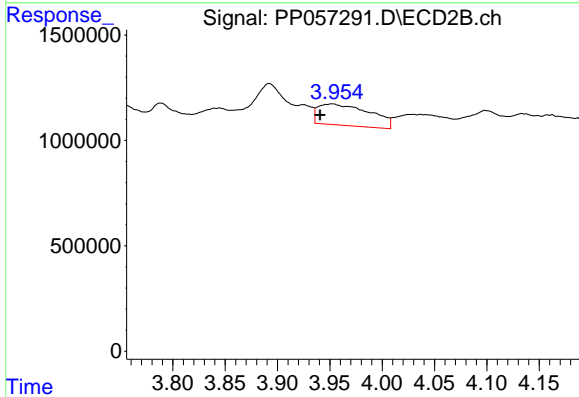
R.T.: 3.845 min
 Delta R.T.: -0.010 min
 Response: 555841
 Conc: 27.06 ng/ml



#9 AR-1221-2

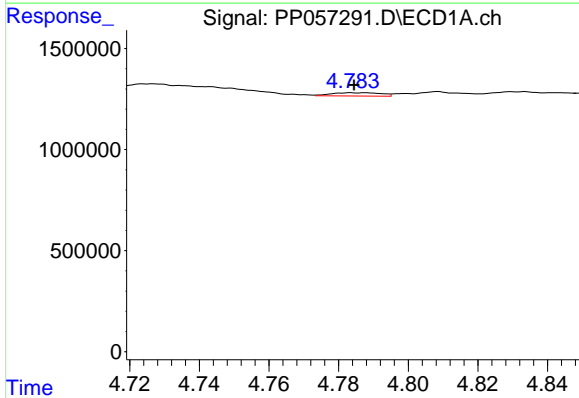
R.T.: 4.726 min
 Delta R.T.: 0.019 min
 Response: 1258938
 Conc: 65.77 ng/ml

Instrument :
 ECD_P
 ClientSampleId :



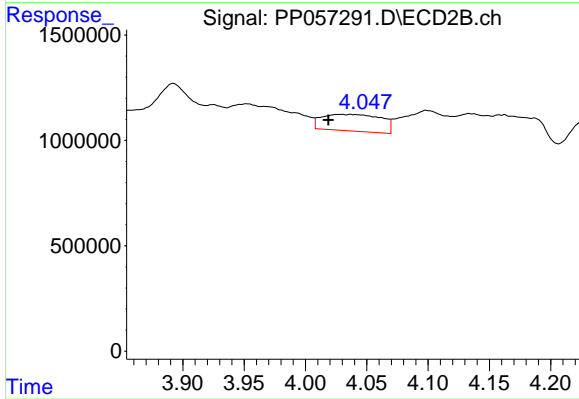
#9 AR-1221-2

R.T.: 3.953 min
 Delta R.T.: 0.012 min
 Response: 3472070
 Conc: 223.26 ng/ml



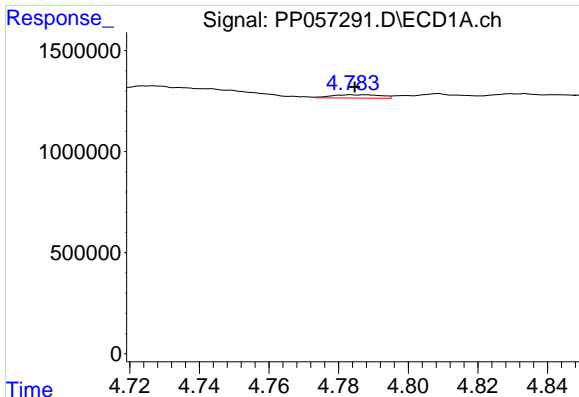
#10 AR-1221-3

R.T.: 4.787 min
 Delta R.T.: 0.003 min
 Response: 157588
 Conc: 2.76 ng/ml



#10 AR-1221-3

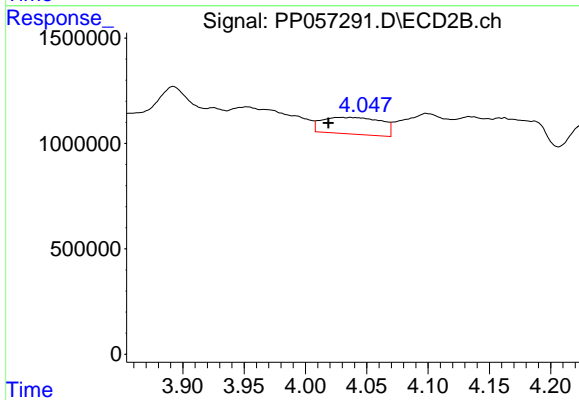
R.T.: 4.029 min
 Delta R.T.: 0.011 min
 Response: 2649852
 Conc: 56.05 ng/ml



#11 AR-1232-1

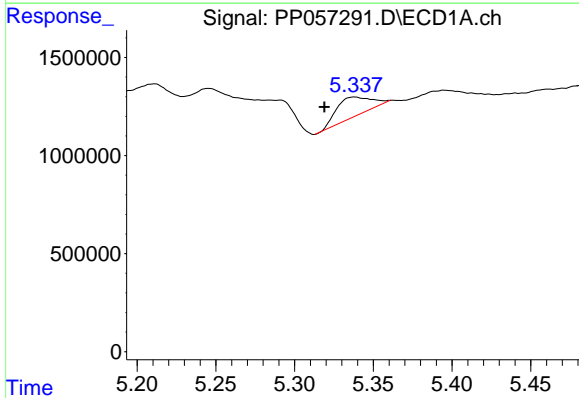
R.T.: 4.787 min
 Delta R.T.: 0.003 min
 Response: 157588
 Conc: 3.21 ng/ml

Instrument :
 ECD_P
 ClientSampleId :



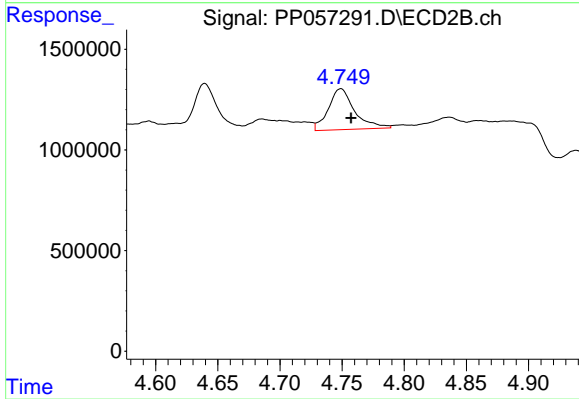
#11 AR-1232-1

R.T.: 4.029 min
 Delta R.T.: 0.011 min
 Response: 2649852
 Conc: 65.93 ng/ml



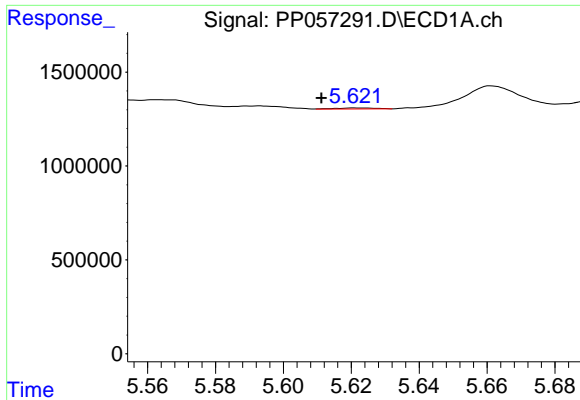
#12 AR-1232-2

R.T.: 5.338 min
 Delta R.T.: 0.019 min
 Response: 1495485
 Conc: 59.23 ng/ml



#12 AR-1232-2

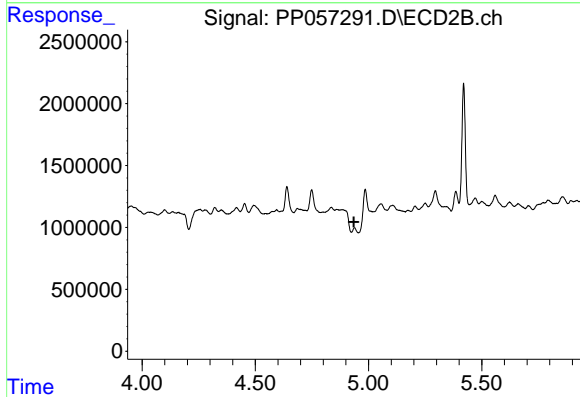
R.T.: 4.749 min
 Delta R.T.: -0.008 min
 Response: 2979003
 Conc: 82.78 ng/ml



#13 AR-1232-3

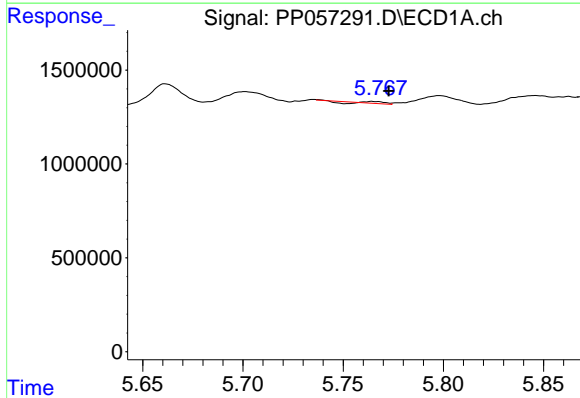
R.T.: 5.622 min
 Delta R.T.: 0.010 min
 Response: 43954
 Conc: 1.07 ng/ml

Instrument :
 ECD_P
 ClientSampleId :



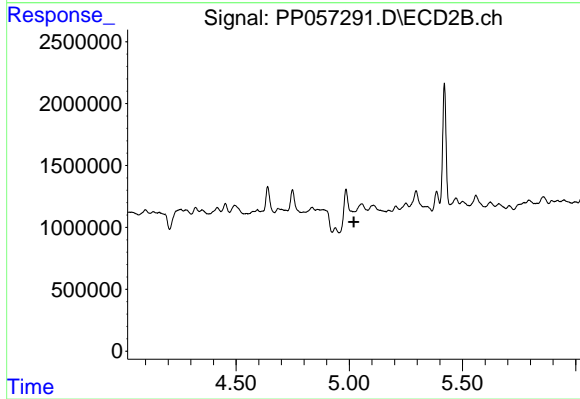
#13 AR-1232-3

R.T.: 4.938 min
 Delta R.T.: 0.003 min
 Response: -920686
 Conc: N.D.



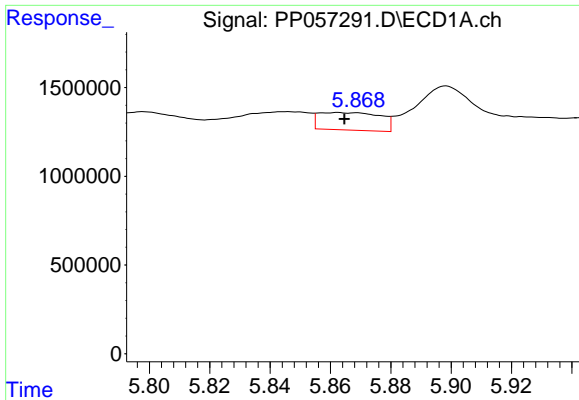
#14 AR-1232-4

R.T.: 5.765 min
 Delta R.T.: -0.008 min
 Response: 20916
 Conc: 1.03 ng/ml



#14 AR-1232-4

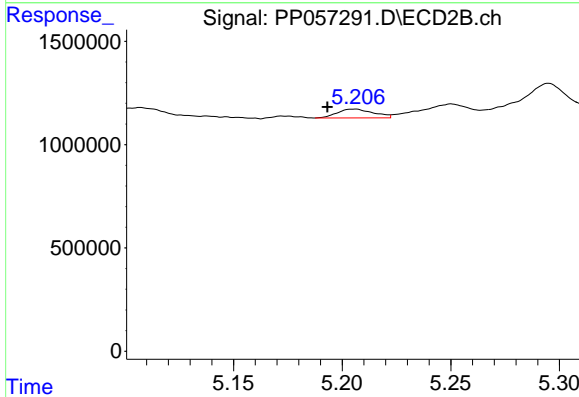
R.T.: 0.000 min
 Exp R.T. : 5.020 min
 Response: 0
 Conc: N.D.



#15 AR-1232-5

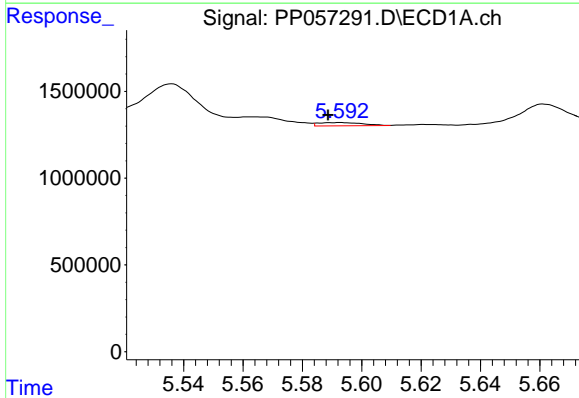
R.T.: 5.862 min
 Delta R.T.: -0.002 min
 Response: 1407091
 Conc: 71.62 ng/ml

Instrument :
 ECD_P
 ClientSampleId :



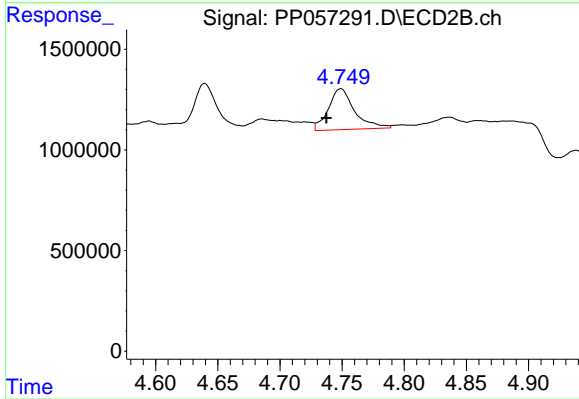
#15 AR-1232-5

R.T.: 5.206 min
 Delta R.T.: 0.012 min
 Response: 492720
 Conc: 22.25 ng/ml



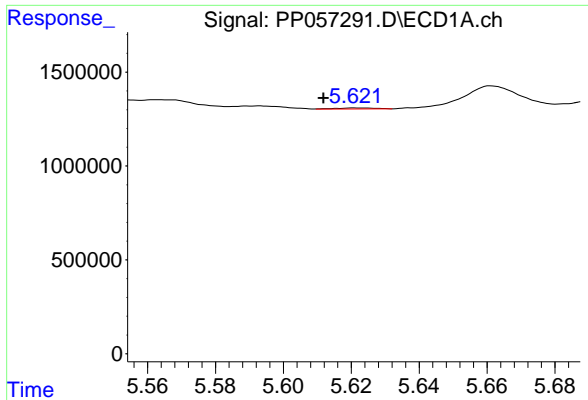
#16 AR-1242-1

R.T.: 5.593 min
 Delta R.T.: 0.004 min
 Response: 196621
 Conc: 4.00 ng/ml



#16 AR-1242-1

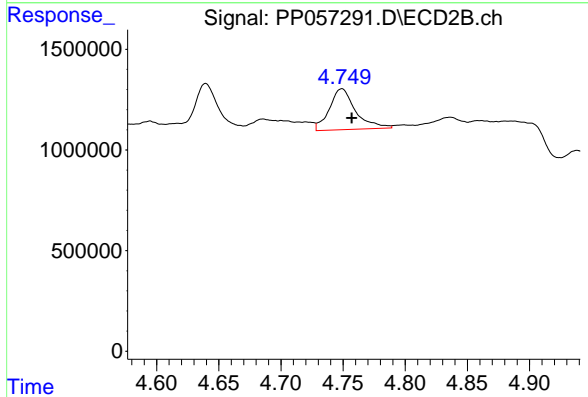
R.T.: 4.749 min
 Delta R.T.: 0.012 min
 Response: 2979003
 Conc: 66.18 ng/ml



#17 AR-1242-2

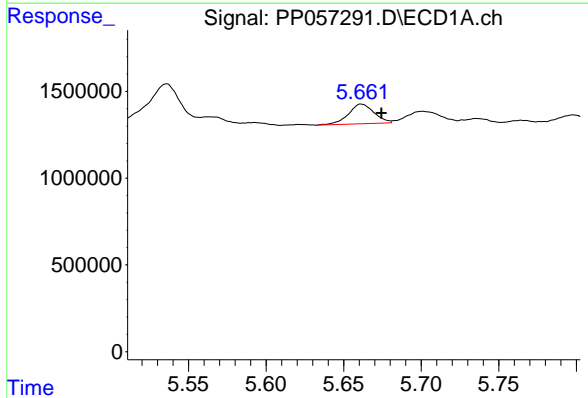
R.T.: 5.622 min
 Delta R.T.: 0.010 min
 Response: 43954
 Conc: 0.62 ng/ml

Instrument :
 ECD_P
 ClientSampleId :



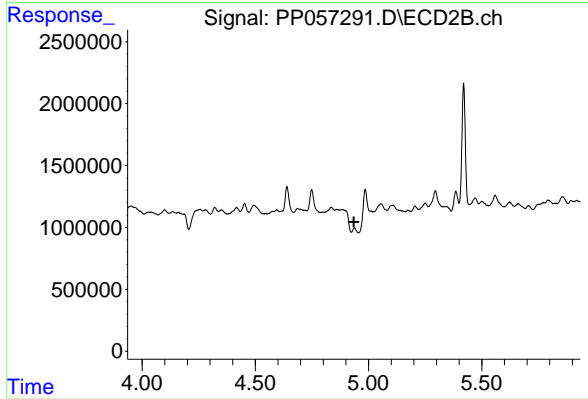
#17 AR-1242-2

R.T.: 4.749 min
 Delta R.T.: -0.008 min
 Response: 2979003
 Conc: 47.99 ng/ml



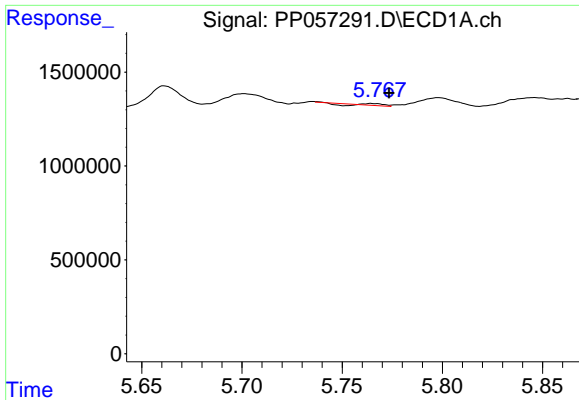
#18 AR-1242-3

R.T.: 5.661 min
 Delta R.T.: -0.013 min
 Response: 1312868
 Conc: 29.30 ng/ml



#18 AR-1242-3

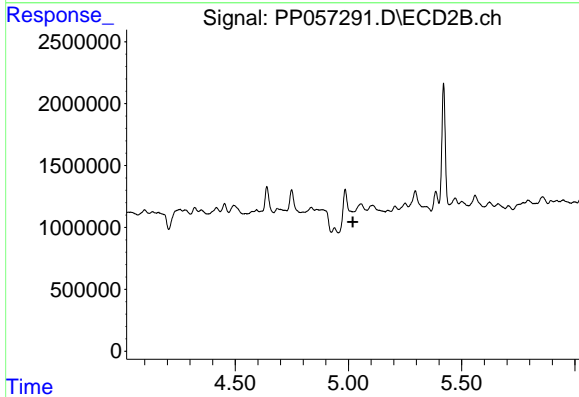
R.T.: 4.938 min
 Delta R.T.: 0.003 min
 Response: -920686
 Conc: N.D.



#19 AR-1242-4

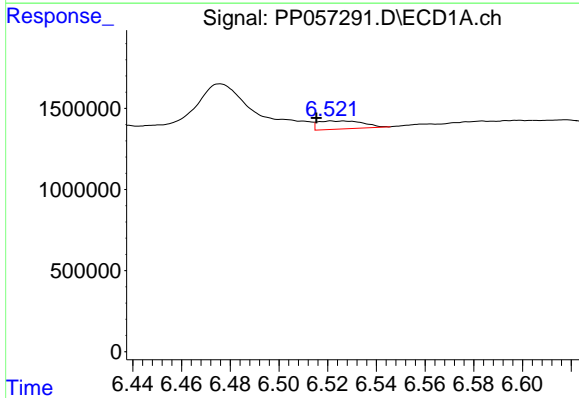
R.T.: 5.765 min
 Delta R.T.: -0.008 min
 Response: 20916
 Conc: 0.58 ng/ml

Instrument :
 ECD_P
 ClientSampleId :



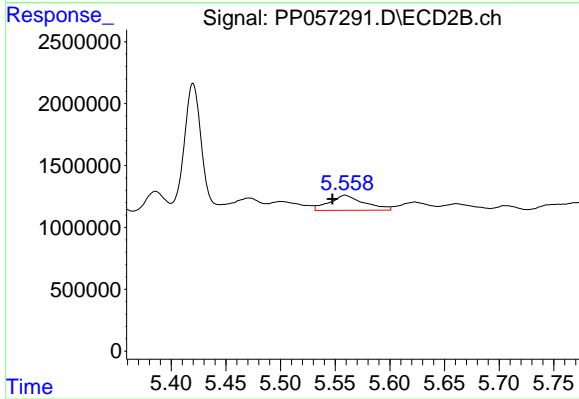
#19 AR-1242-4

R.T.: 0.000 min
 Exp R.T. : 5.019 min
 Response: 0
 Conc: N.D.



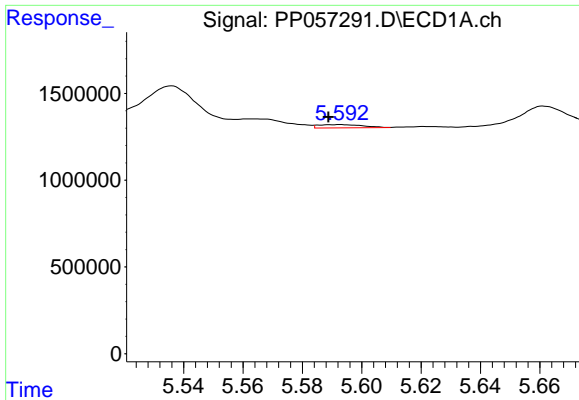
#20 AR-1242-5

R.T.: 6.522 min
 Delta R.T.: 0.006 min
 Response: 638739
 Conc: 20.20 ng/ml



#20 AR-1242-5

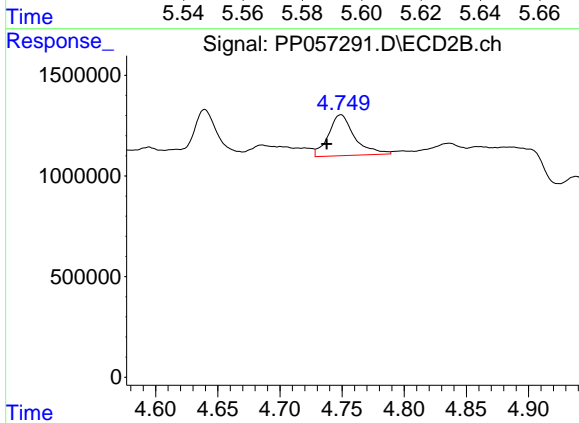
R.T.: 5.559 min
 Delta R.T.: 0.012 min
 Response: 2686530
 Conc: 61.52 ng/ml



#21 AR-1248-1

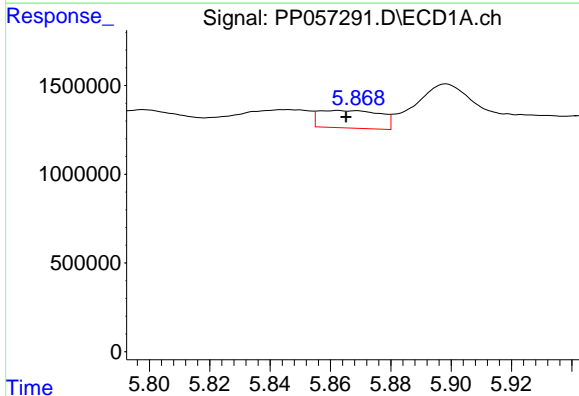
R.T.: 5.593 min
 Delta R.T.: 0.004 min
 Response: 196621
 Conc: 5.34 ng/ml

Instrument :
 ECD_P
 ClientSampleId :



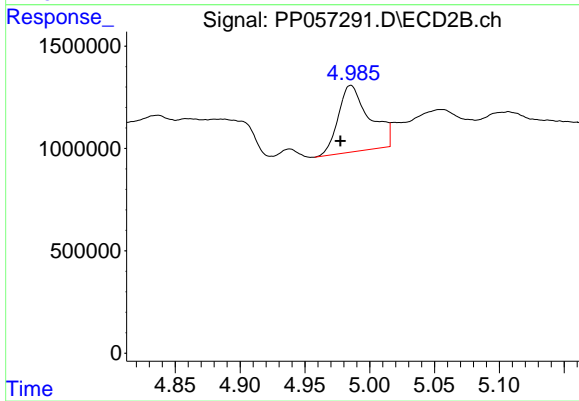
#21 AR-1248-1

R.T.: 4.749 min
 Delta R.T.: 0.011 min
 Response: 2979003
 Conc: 87.17 ng/ml



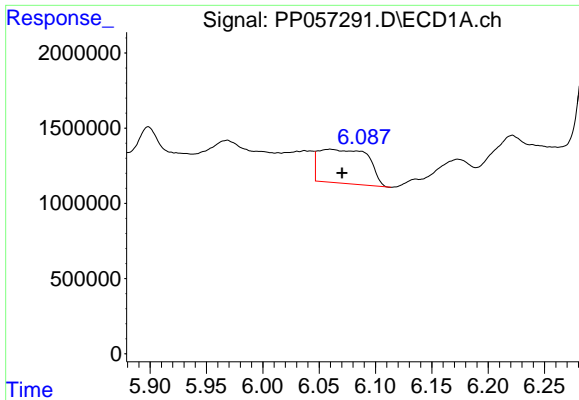
#22 AR-1248-2

R.T.: 5.862 min
 Delta R.T.: -0.003 min
 Response: 1407091
 Conc: 22.21 ng/ml



#22 AR-1248-2

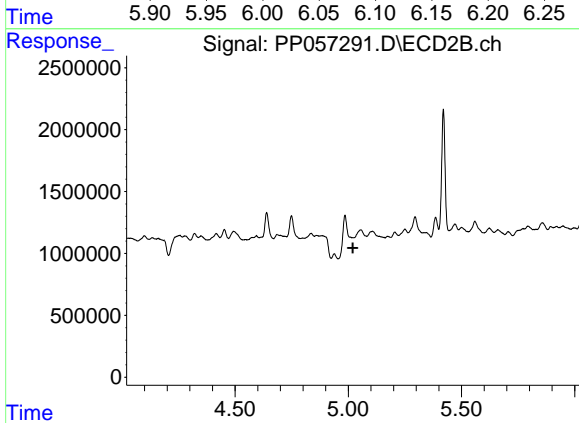
R.T.: 4.985 min
 Delta R.T.: 0.008 min
 Response: 5431271
 Conc: 98.02 ng/ml



#23 AR-1248-3

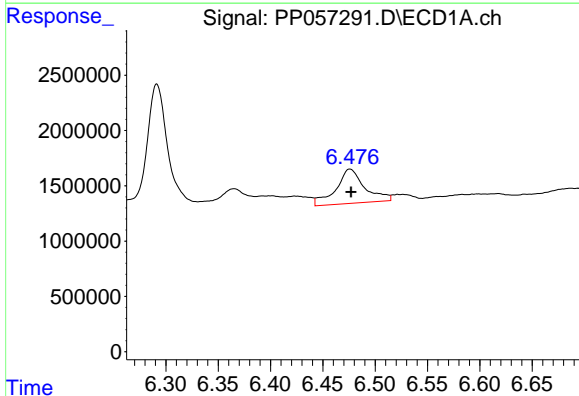
R.T.: 6.060 min
 Delta R.T.: -0.011 min
 Response: 6921404
 Conc: 104.55 ng/ml

Instrument :
 ECD_P
 ClientSampleId :



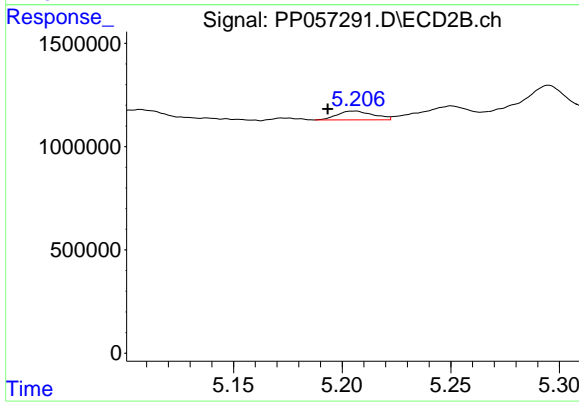
#23 AR-1248-3

R.T.: 0.000 min
 Exp R.T. : 5.020 min
 Response: 0
 Conc: N.D.



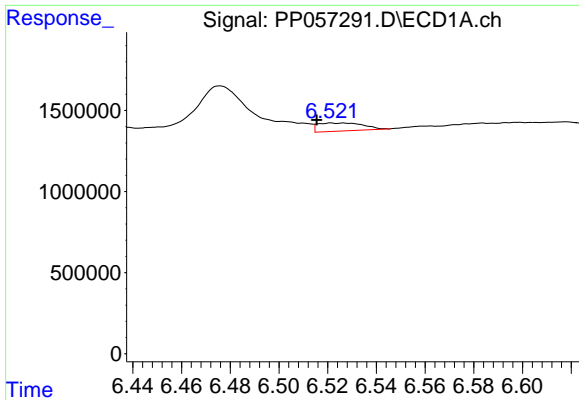
#24 AR-1248-4

R.T.: 6.476 min
 Delta R.T.: -0.001 min
 Response: 5945098
 Conc: 105.77 ng/ml



#24 AR-1248-4

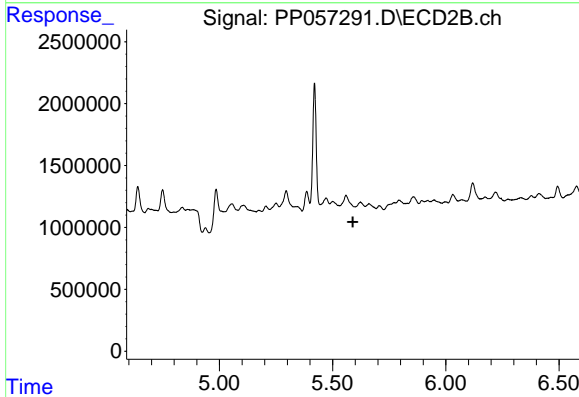
R.T.: 5.206 min
 Delta R.T.: 0.012 min
 Response: 492720
 Conc: 7.45 ng/ml



#25 AR-1248-5

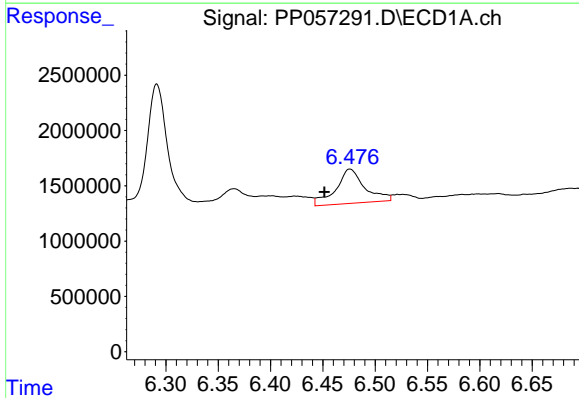
R.T.: 6.522 min
 Delta R.T.: 0.006 min
 Response: 638739
 Conc: 11.71 ng/ml

Instrument :
 ECD_P
 ClientSampleId :



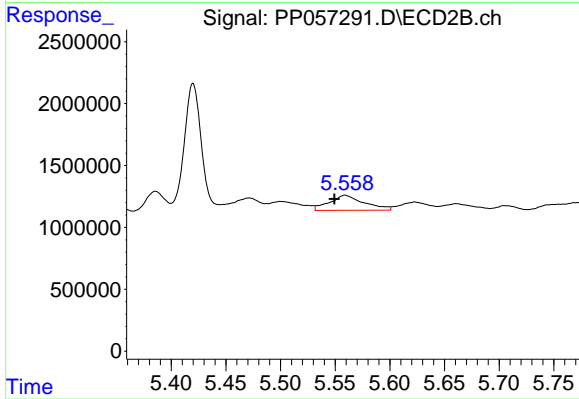
#25 AR-1248-5

R.T.: 0.000 min
 Exp R.T. : 5.589 min
 Response: 0
 Conc: N.D.



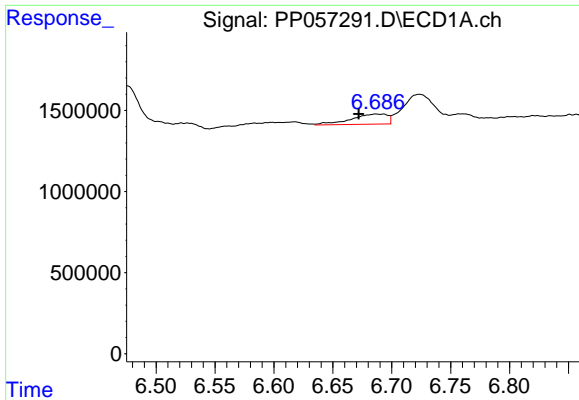
#26 AR-1254-1

R.T.: 6.476 min
 Delta R.T.: 0.024 min
 Response: 5945098
 Conc: 79.06 ng/ml



#26 AR-1254-1

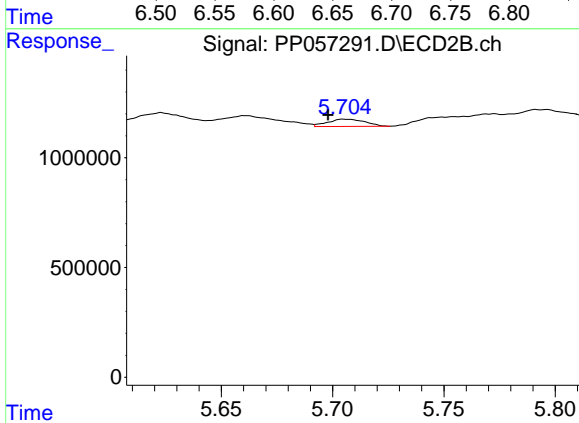
R.T.: 5.559 min
 Delta R.T.: 0.010 min
 Response: 2686530
 Conc: 26.82 ng/ml



#27 AR-1254-2

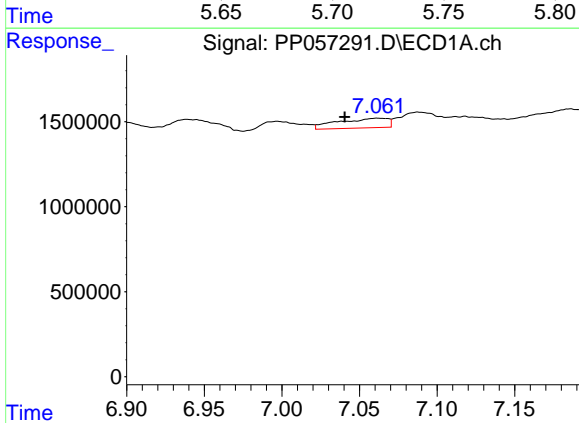
R.T.: 6.687 min
 Delta R.T.: 0.015 min
 Response: 1356227
 Conc: 12.88 ng/ml

Instrument :
 ECD_P
 ClientSampleId :



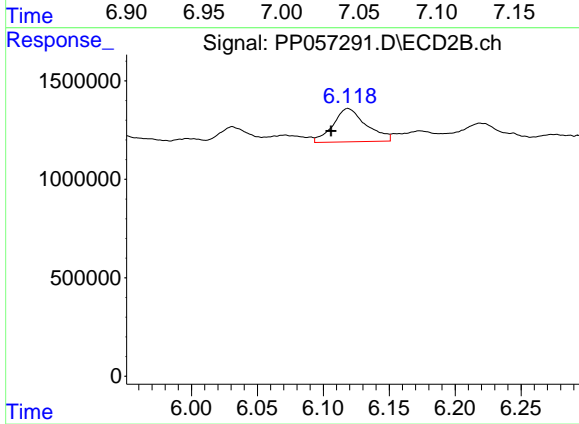
#27 AR-1254-2

R.T.: 5.705 min
 Delta R.T.: 0.007 min
 Response: 384555
 Conc: 4.37 ng/ml



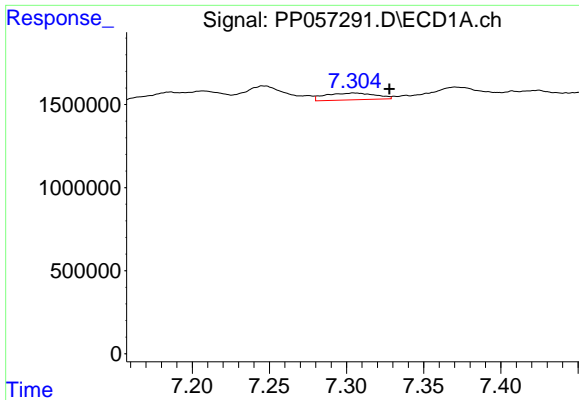
#28 AR-1254-3

R.T.: 7.062 min
 Delta R.T.: 0.021 min
 Response: 1270073
 Conc: 13.01 ng/ml



#28 AR-1254-3

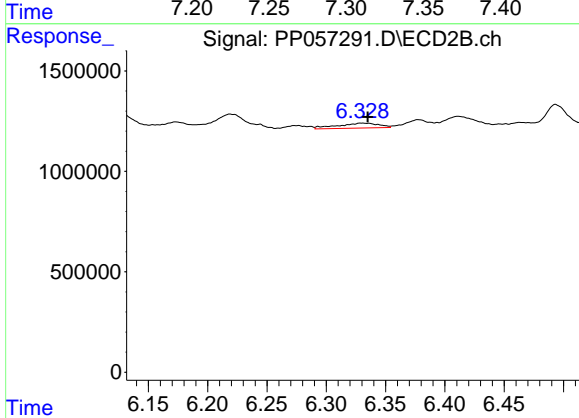
R.T.: 6.119 min
 Delta R.T.: 0.013 min
 Response: 2975308
 Conc: 21.71 ng/ml



#29 AR-1254-4

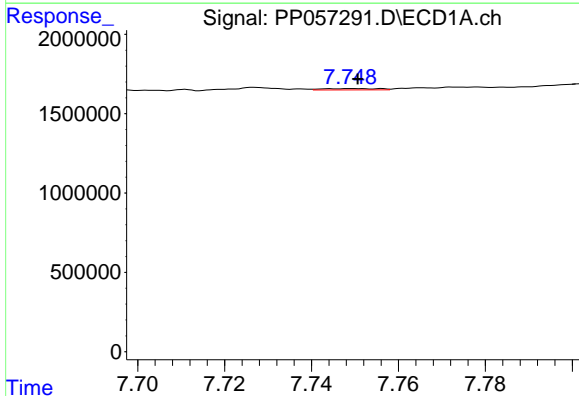
R.T.: 7.305 min
 Delta R.T.: -0.023 min
 Response: 925308
 Conc: 15.77 ng/ml

Instrument :
 ECD_P
 ClientSampleId :



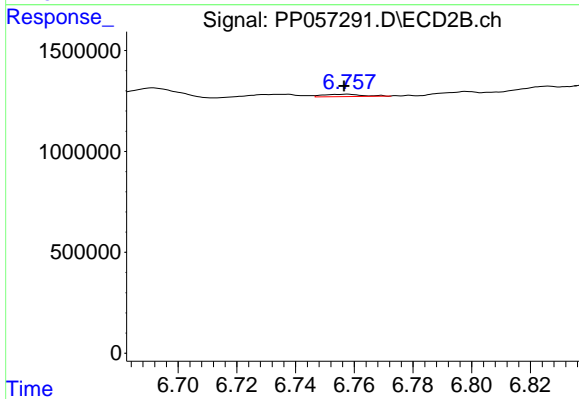
#29 AR-1254-4

R.T.: 6.330 min
 Delta R.T.: -0.005 min
 Response: 598833
 Conc: 7.95 ng/ml



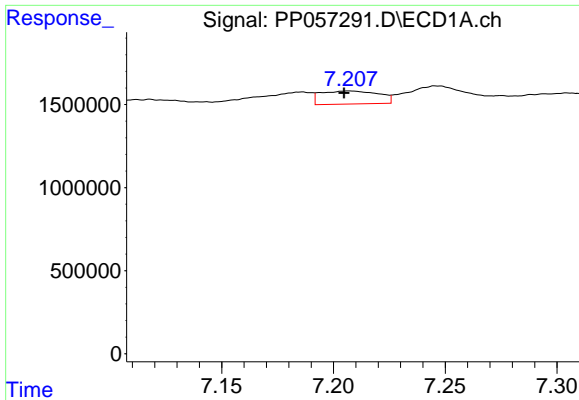
#30 AR-1254-5

R.T.: 7.750 min
 Delta R.T.: 0.000 min
 Response: 72806
 Conc: 1.15 ng/ml



#30 AR-1254-5

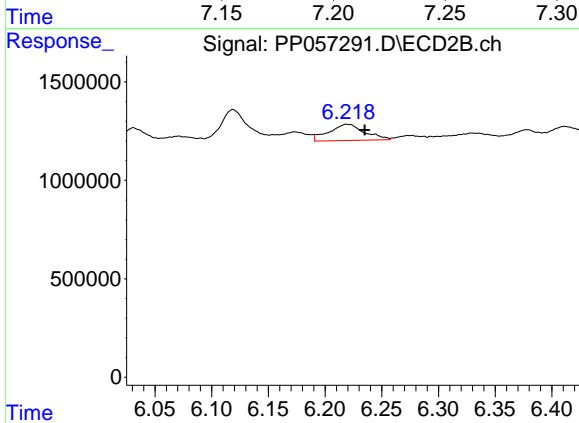
R.T.: 6.757 min
 Delta R.T.: 0.000 min
 Response: 109498
 Conc: 0.95 ng/ml



#31 AR-1260-1

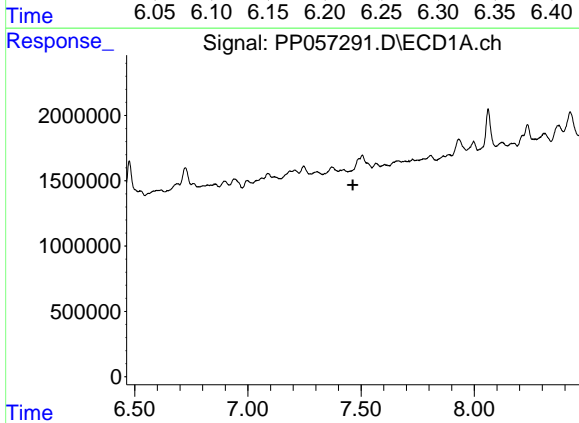
R.T.: 7.207 min
 Delta R.T.: 0.002 min
 Response: 1407736
 Conc: 16.27 ng/ml

Instrument :
 ECD_P
 ClientSampleId :



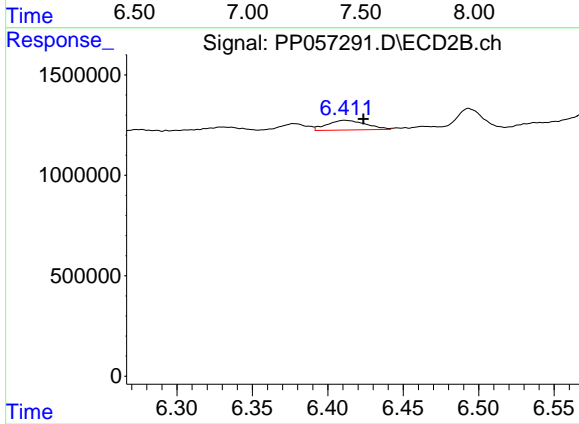
#31 AR-1260-1

R.T.: 6.219 min
 Delta R.T.: -0.016 min
 Response: 1794584
 Conc: 17.23 ng/ml



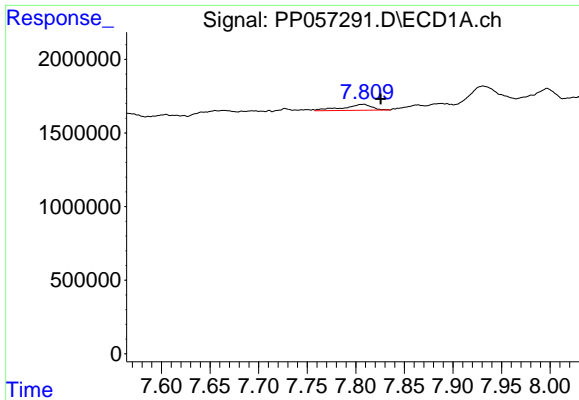
#32 AR-1260-2

R.T.: 0.000 min
 Exp R.T. : 7.463 min
 Response: 0
 Conc: N.D.



#32 AR-1260-2

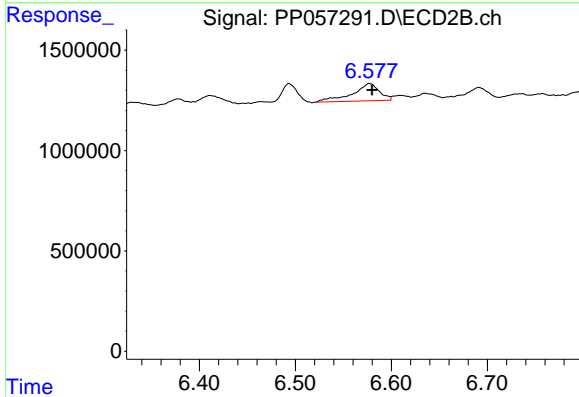
R.T.: 6.411 min
 Delta R.T.: -0.012 min
 Response: 861506
 Conc: 7.53 ng/ml



#33 AR-1260-3

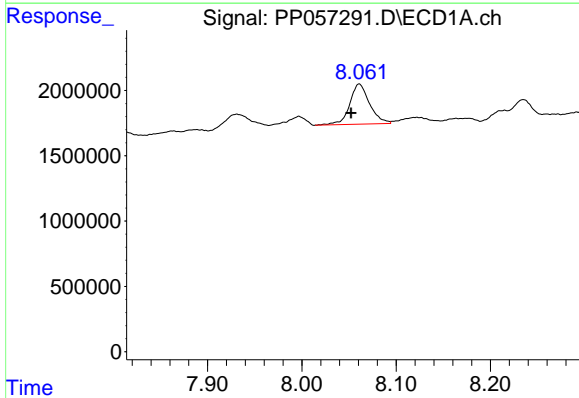
R.T.: 7.808 min
 Delta R.T.: -0.018 min
 Response: 816363
 Conc: 12.10 ng/ml

Instrument :
 ECD_P
 ClientSampleId :



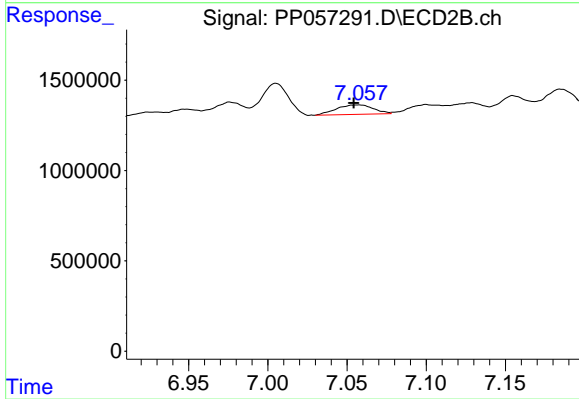
#33 AR-1260-3

R.T.: 6.577 min
 Delta R.T.: -0.002 min
 Response: 1679265
 Conc: 14.89 ng/ml



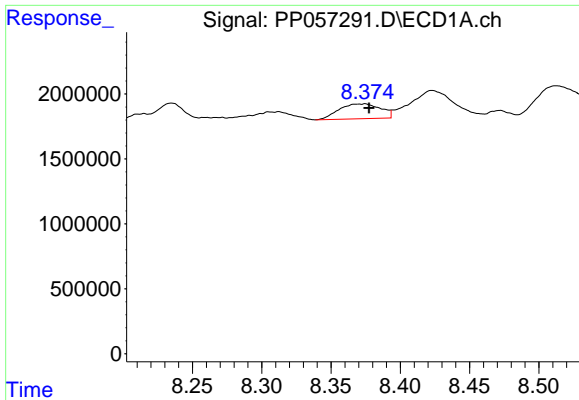
#34 AR-1260-4

R.T.: 8.061 min
 Delta R.T.: 0.009 min
 Response: 4489140
 Conc: 59.37 ng/ml



#34 AR-1260-4

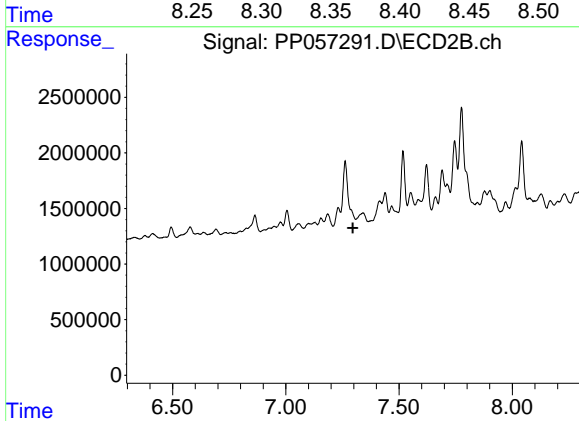
R.T.: 7.057 min
 Delta R.T.: 0.003 min
 Response: 850812
 Conc: 9.24 ng/ml



#35 AR-1260-5

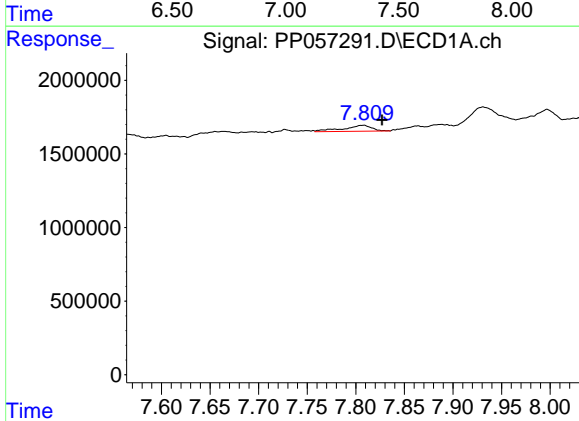
R.T.: 8.374 min
 Delta R.T.: -0.003 min
 Response: 2393725
 Conc: 20.55 ng/ml

Instrument :
 ECD_P
 ClientSampleId :



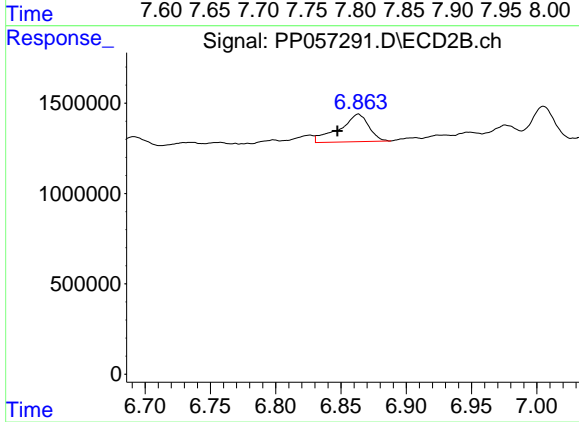
#35 AR-1260-5

R.T.: 0.000 min
 Exp R.T. : 7.296 min
 Response: 0
 Conc: N.D.



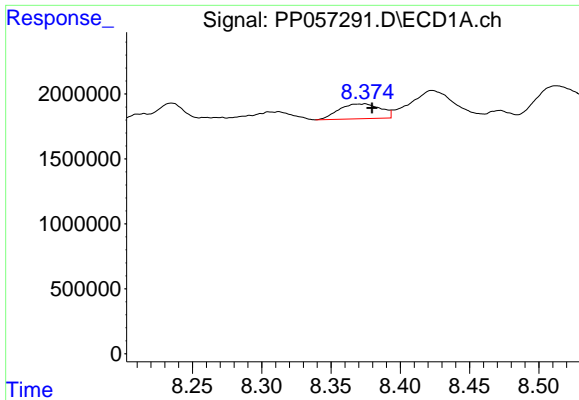
#36 AR-1262-1

R.T.: 7.808 min
 Delta R.T.: -0.019 min
 Response: 816363
 Conc: 8.96 ng/ml



#36 AR-1262-1

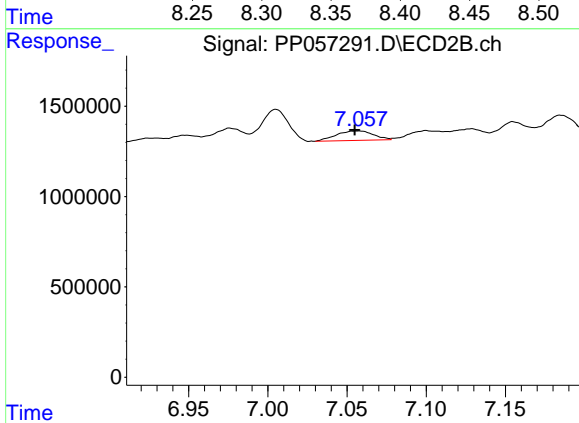
R.T.: 6.863 min
 Delta R.T.: 0.016 min
 Response: 2395164
 Conc: 44.33 ng/ml



#37 AR-1262-2

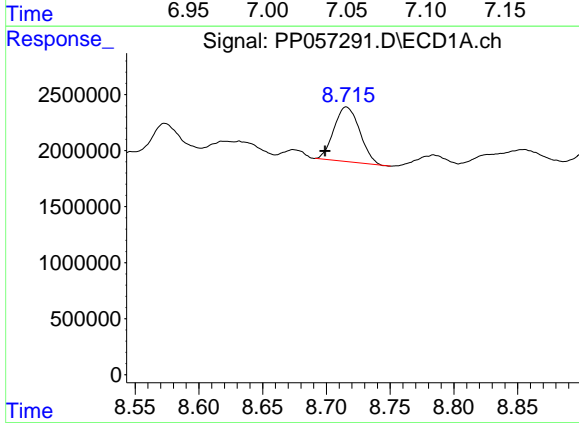
R.T.: 8.374 min
 Delta R.T.: -0.005 min
 Response: 2393725
 Conc: 19.21 ng/ml

Instrument :
 ECD_P
 ClientSampleId :



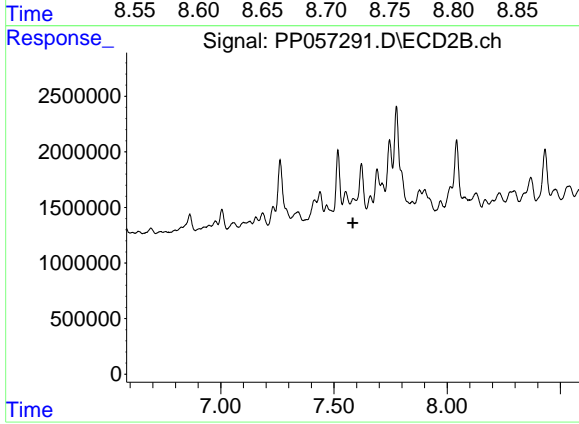
#37 AR-1262-2

R.T.: 7.057 min
 Delta R.T.: 0.002 min
 Response: 850812
 Conc: 7.59 ng/ml



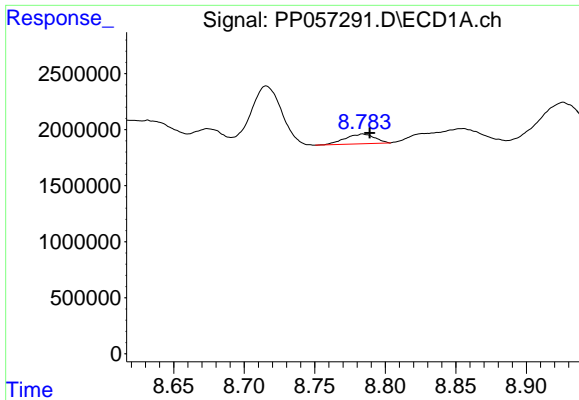
#38 AR-1262-3

R.T.: 8.716 min
 Delta R.T.: 0.017 min
 Response: 6818476
 Conc: 76.84 ng/ml



#38 AR-1262-3

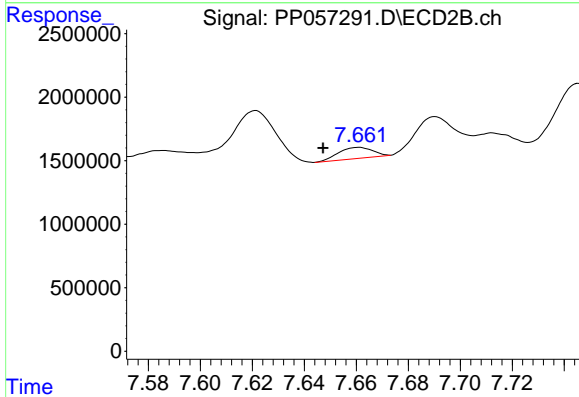
R.T.: 7.585 min
 Delta R.T.: 0.002 min
 Response: -34419
 Conc: N.D.



#39 AR-1262-4

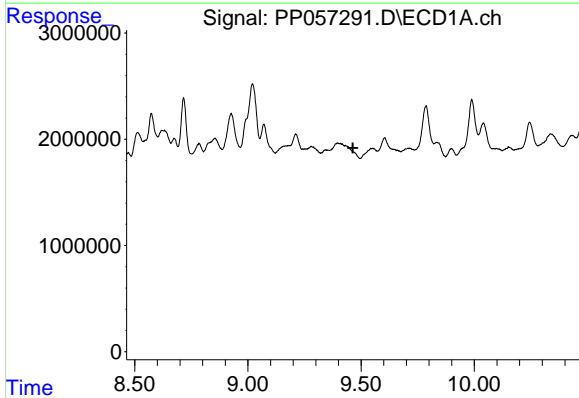
R.T.: 8.784 min
 Delta R.T.: -0.005 min
 Response: 1279844
 Conc: 19.62 ng/ml

Instrument :
 ECD_P
 ClientSampleId :



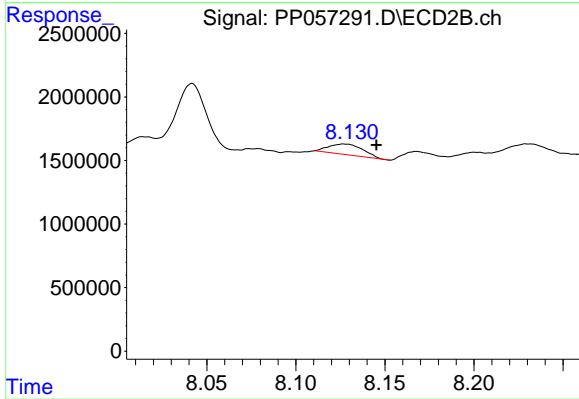
#39 AR-1262-4

R.T.: 7.661 min
 Delta R.T.: 0.014 min
 Response: 795638
 Conc: 5.38 ng/ml



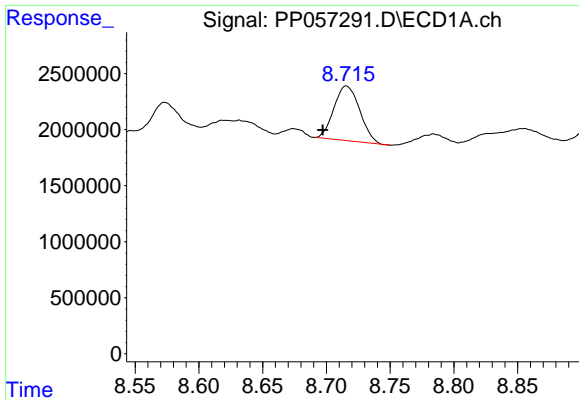
#40 AR-1262-5

R.T.: 0.000 min
 Exp R.T. : 9.464 min
 Response: 0
 Conc: N.D.



#40 AR-1262-5

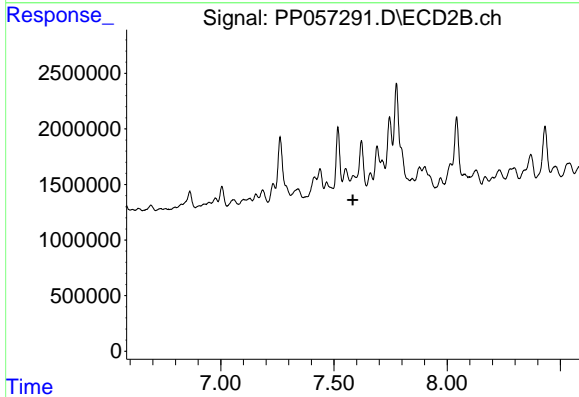
R.T.: 8.127 min
 Delta R.T.: -0.018 min
 Response: 1109472
 Conc: 17.02 ng/ml



#41 AR-1268-1

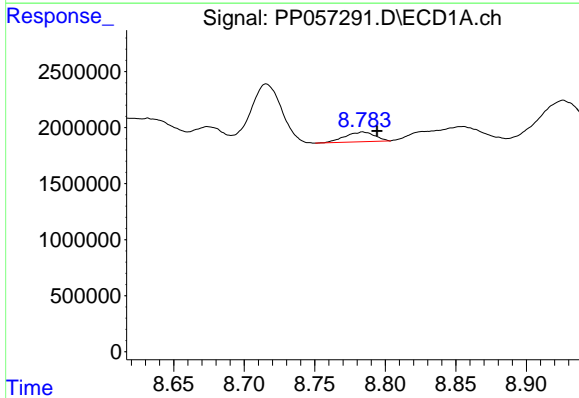
R.T.: 8.716 min
 Delta R.T.: 0.019 min
 Response: 6818476
 Conc: 38.48 ng/ml

Instrument :
 ECD_P
 ClientSampleId :



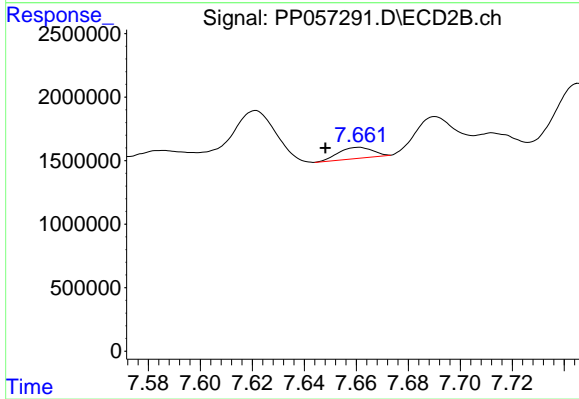
#41 AR-1268-1

R.T.: 7.585 min
 Delta R.T.: 0.001 min
 Response: -34419
 Conc: N.D.



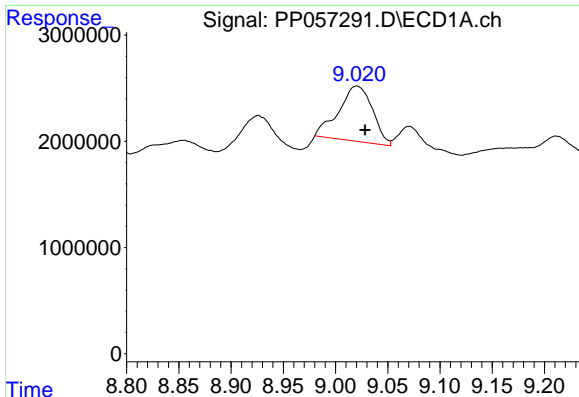
#42 AR-1268-2

R.T.: 8.784 min
 Delta R.T.: -0.010 min
 Response: 1279844
 Conc: 8.88 ng/ml



#42 AR-1268-2

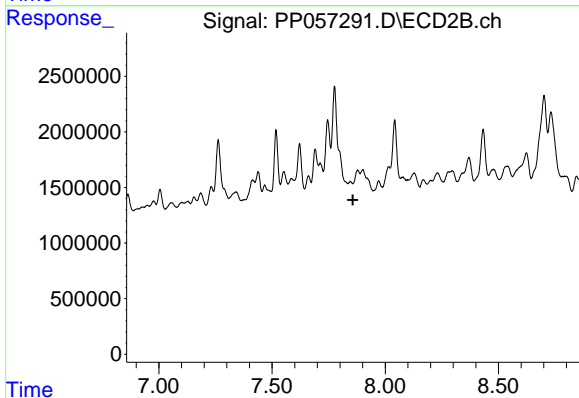
R.T.: 7.661 min
 Delta R.T.: 0.013 min
 Response: 795638
 Conc: 3.49 ng/ml



#43 AR-1268-3

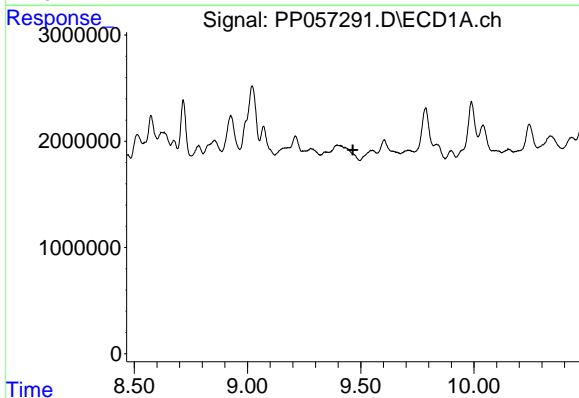
R.T.: 9.020 min
 Delta R.T.: -0.008 min
 Response: 11758627
 Conc: 74.97 ng/ml

Instrument :
 ECD_P
 ClientSampleId :



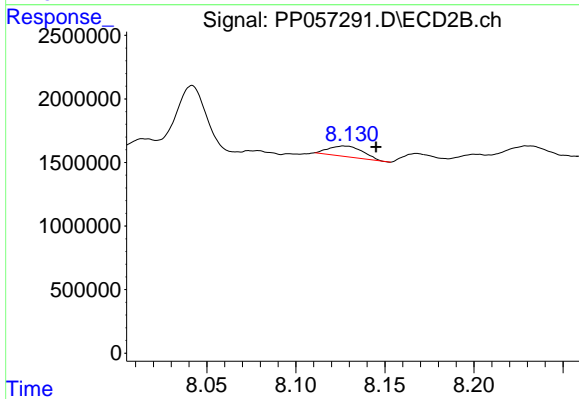
#43 AR-1268-3

R.T.: 7.846 min
 Delta R.T.: -0.011 min
 Response: -92506
 Conc: N.D.



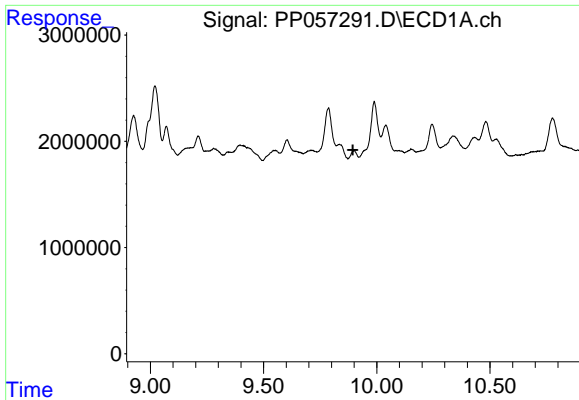
#44 AR-1268-4

R.T.: 0.000 min
 Exp R.T. : 9.465 min
 Response: 0
 Conc: N.D.



#44 AR-1268-4

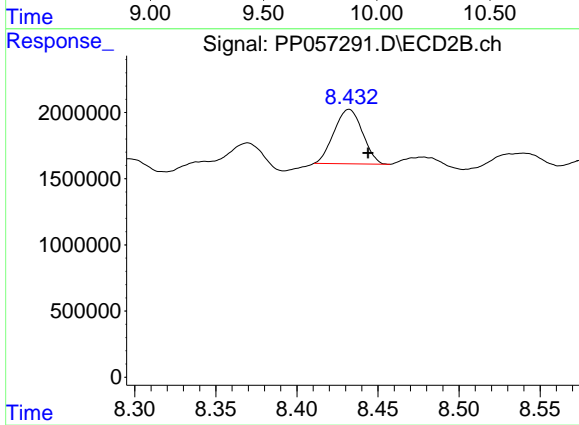
R.T.: 8.127 min
 Delta R.T.: -0.018 min
 Response: 1109472
 Conc: 14.81 ng/ml



#45 AR-1268-5

R.T.: 9.900 min
 Delta R.T.: 0.005 min
 Response: -303841
 Conc: N.D.

Instrument :
 ECD_P
 ClientSampleId :



#45 AR-1268-5

R.T.: 8.432 min
 Delta R.T.: -0.012 min
 Response: 5035128
 Conc: 9.23 ng/ml