

Data Path : Z:\pestpcbsrv\HPCHEM1\ECD_P\Data\PP042919\
 Data File : PP030076.D
 Signal(s) : Signal #1: ECD1A.CH Signal #2: ECD2B.CH
 Acq On : 29 Apr 2019 18:40
 Operator : EI/SJ
 Sample : K2564-03
 Misc :
 ALS Vial : 15 Sample Multiplier: 1

Instrument :
 ECD_P
 ClientSampleId :
 C-3_042419

Integration File signal 1: autoint1.e
 Integration File signal 2: autoint2.e
 Quant Time: Apr 30 05:47:34 2019
 Quant Method : Z:\pestpcbsrv\HPCHEM1\ECD_P\methods\PP042519.M
 Quant Title : 8080.M
 QLast Update : Fri Apr 26 10:04:13 2019
 Response via : Initial Calibration
 Integrator: ChemStation 6890 Scale Mode: Large solvent peaks clipped

Volume Inj. : 2 µl
 Signal #1 Phase : ZB-CLPesticides-1 Signal #2 Phase: ZB-CLPesticides-2
 Signal #1 Info : 30M x 0.32mm x0.5 Signal #2 Info : 30M x 0.32mm x 0.25µm

Compound	RT#1	RT#2	Resp#1	Resp#2	ng/ml	ng/ml
----------	------	------	--------	--------	-------	-------

System Monitoring Compounds

4) S	2,4-DCAA	12.142	12.216	143.9E6	92674832	323.547	231.492 #
------	----------	--------	--------	---------	----------	---------	-----------

Target Compounds

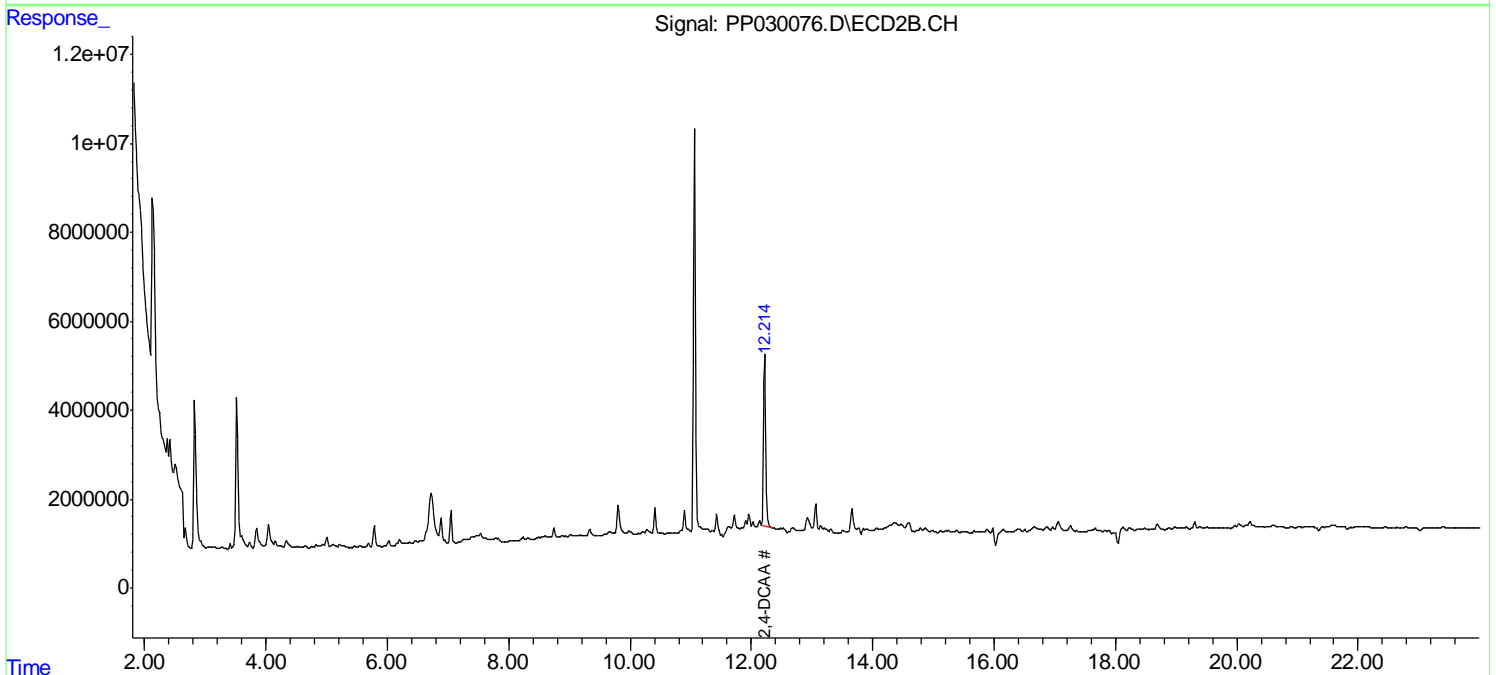
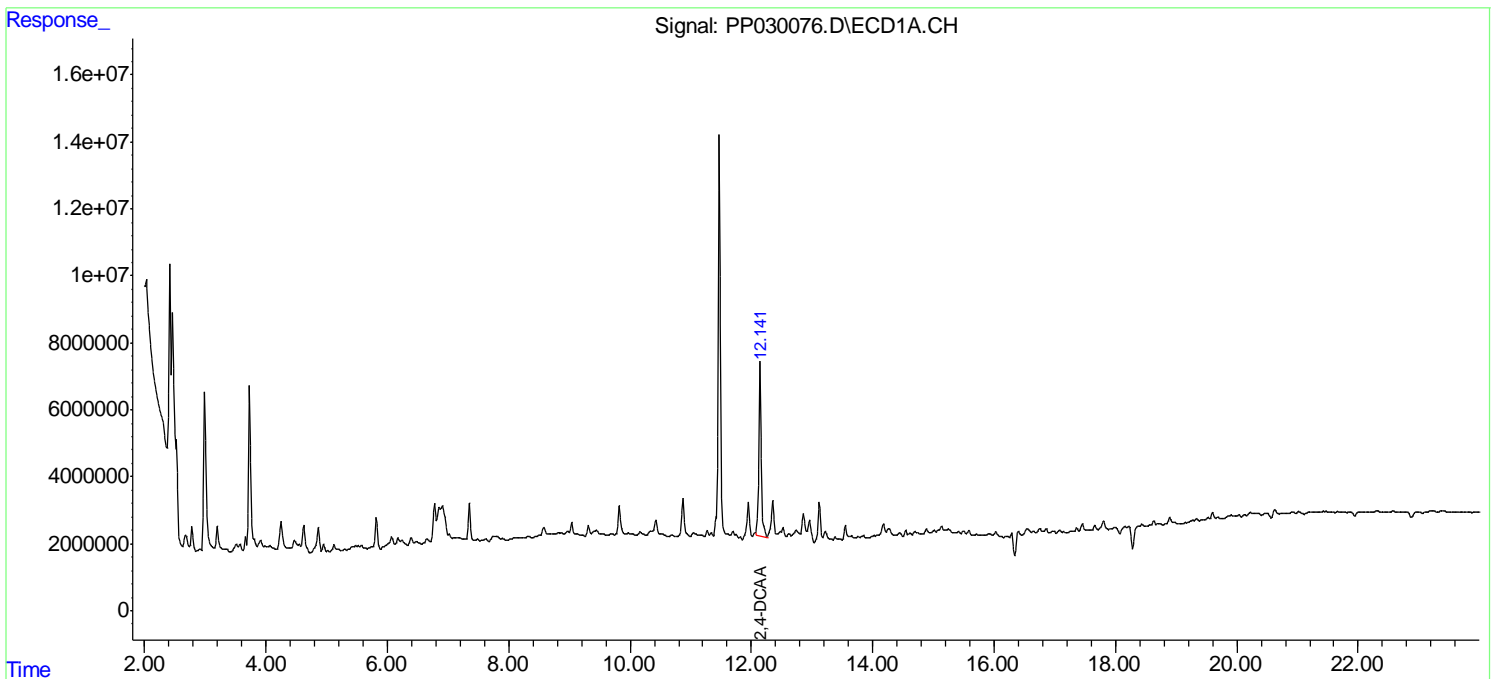
(f)=RT Delta > 1/2 Window (#)=Amounts differ by > 25% (m)=manual int.

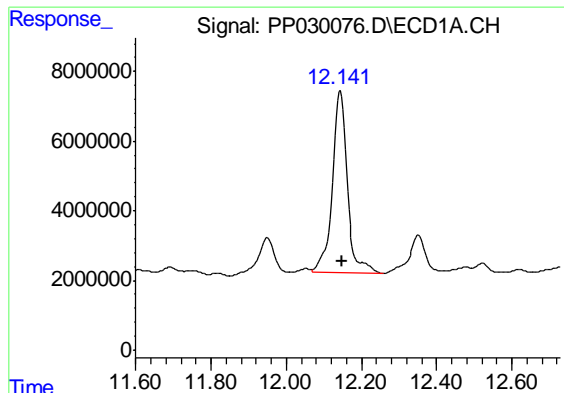
Data Path : Z:\pestpcbsrv\HPCHEM1\ECD_P\Data\PP042919\
 Data File : PP030076.D
 Signal(s) : Signal #1: ECD1A.CH Signal #2: ECD2B.CH
 Acq On : 29 Apr 2019 18:40
 Operator : EI/SJ
 Sample : K2564-03
 Misc :
 ALS Vial : 15 Sample Multiplier: 1

Instrument :
 ECD_P
 ClientSampleId :
 C-3_042419

Integration File signal 1: autoint1.e
 Integration File signal 2: autoint2.e
 Quant Time: Apr 30 05:47:34 2019
 Quant Method : Z:\pestpcbsrv\HPCHEM1\ECD_P\methods\PP042519.M
 Quant Title : 8080.M
 QLast Update : Fri Apr 26 10:04:13 2019
 Response via : Initial Calibration
 Integrator: ChemStation 6890 Scale Mode: Large solvent peaks clipped

Volume Inj. : 2 µl
 Signal #1 Phase : ZB-CLPesticides-1 Signal #2 Phase: ZB-CLPesticides-2
 Signal #1 Info : 30M x 0.32mm x0.5 Signal #2 Info : 30M x 0.32mm x 0.25µm

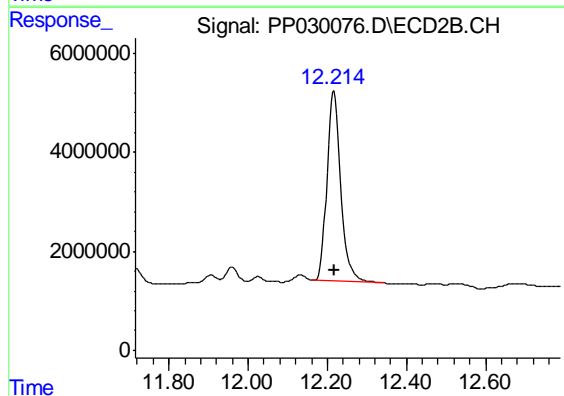




#4 2,4-DCAA

R.T.: 12.142 min
Delta R.T.: -0.007 min
Response: 143879825
Conc: 323.55 ng/ml

Instrument :
ECD_P
ClientSampleId :
C-3_042419



#4 2,4-DCAA

R.T.: 12.216 min
Delta R.T.: -0.003 min
Response: 92674832
Conc: 231.49 ng/ml