

Data Path : Z:\pestpcbsrv\HPCHEM1\ECD_P\Data\PP042921\
 Data File : PP035390.D
 Signal(s) : Signal #1: ECD1A.CH Signal #2: ECD2B.CH
 Acq On : 29 Apr 2021 16:24
 Operator : DD\AJ
 Sample : AR1660ICC1000
 Misc :
 ALS Vial : 3 Sample Multiplier: 1

Instrument :
 ECD_P
 ClientSampleId :

Integration File signal 1: autoint1.e
 Integration File signal 2: autoint2.e
 Quant Time: Apr 30 05:30:35 2021
 Quant Method : Z:\pestpcbsrv\HPCHEM1\ECD_P\methods\PP042921.M
 Quant Title : GC EXTRACTABLES
 QLast Update : Fri Apr 30 05:27:50 2021
 Response via : Initial Calibration
 Integrator: ChemStation 6890 Scale Mode: Small noise peaks clipped

Volume Inj. : 2 µl
 Signal #1 Phase : ZB-MR1 Signal #2 Phase: ZB-MR2
 Signal #1 Info : 30Mx0.32mmx 0.50µ Signal #2 Info : 30M x 0.32mm x 0.25µm

Compound	RT#1	RT#2	Resp#1	Resp#2	ng/ml	ng/ml

System Monitoring Compounds						
1) SA Tetrachlo...	4.791	4.209	4829293	3201207	97.760	97.231
2) SA Decachlor...	10.668	9.478	3864865	1731258	97.831	95.631
Target Compounds						
3) L1 AR-1016-1	6.098	5.453	1570571	968565	963.176	954.642
4) L1 AR-1016-2	6.121	5.473	2319247	1430964	960.135	954.594
5) L1 AR-1016-3	6.186	5.665	1436309	773861	956.835	952.753
6) L1 AR-1016-4	6.292	5.712	1194938	584921	962.050	944.514
7) L1 AR-1016-5	6.605	5.941	1135083	751871	953.842	946.454
31) L7 AR-1260-1	7.777	7.025	2095810	1263327	959.072	947.973
32) L7 AR-1260-2	8.042	7.220	2473104	1494005	963.478	950.036
33) L7 AR-1260-3	8.406	7.375	1620051	1407772	970.480	949.816
34) L7 AR-1260-4	8.636	7.853	2027952	1013976	972.751	951.637
35) L7 AR-1260-5	8.952	8.098	3905599	2344978	984.335	967.021

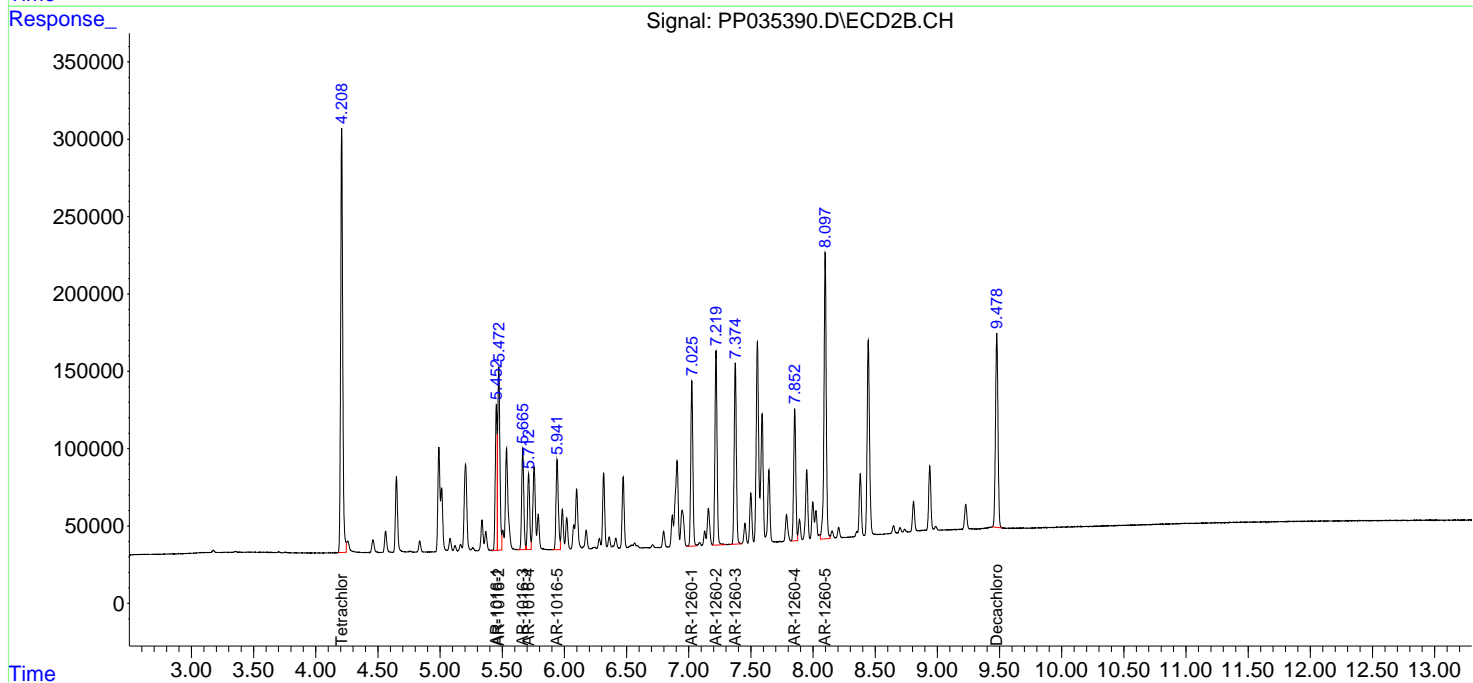
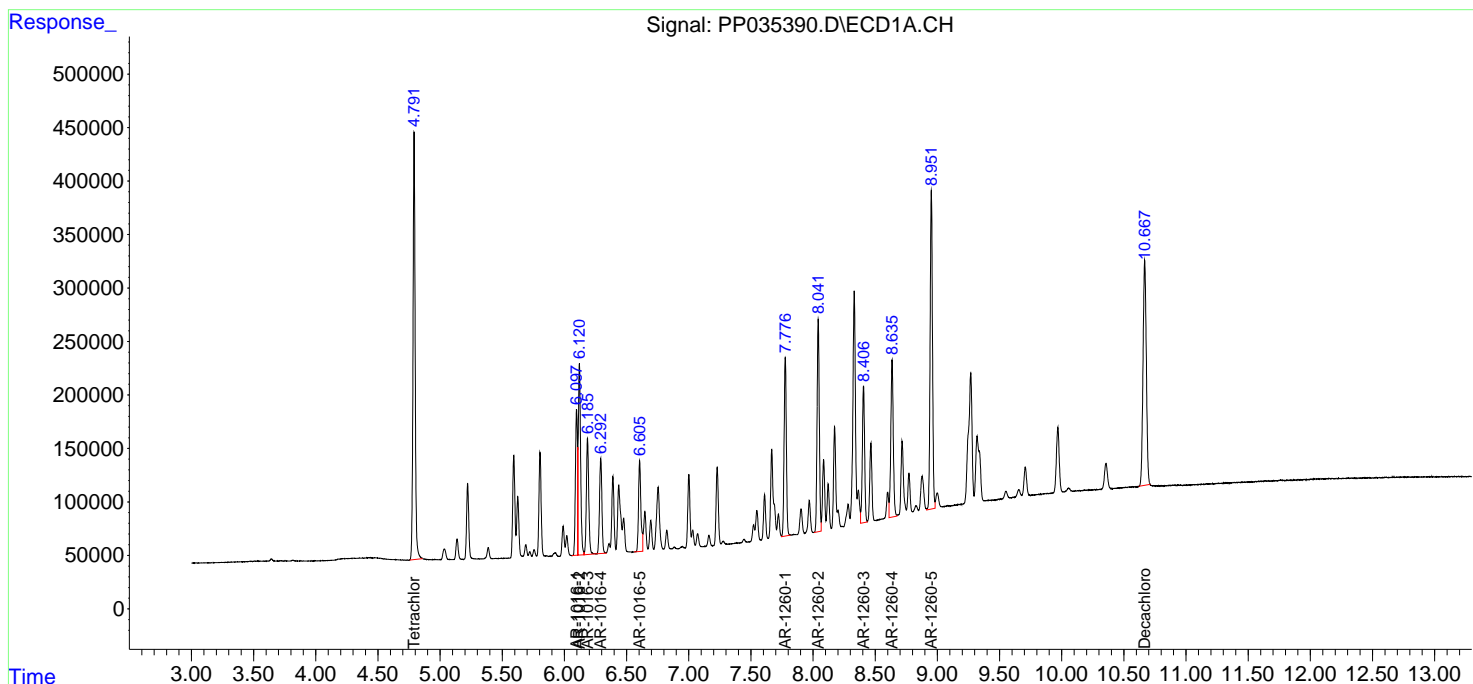
(f)=RT Delta > 1/2 Window (#)=Amounts differ by > 25% (m)=manual int.

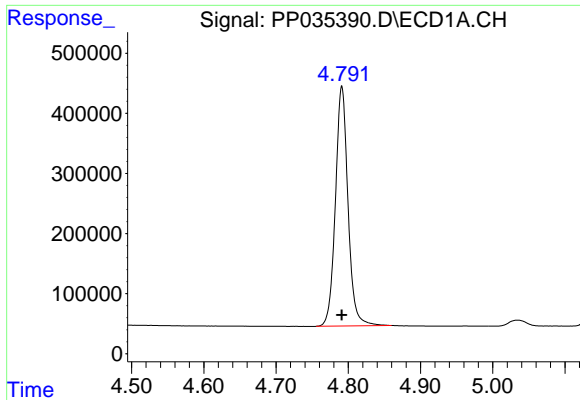
Data Path : Z:\pestpcbsrv\HPCHEM1\ECD_P\Data\PP042921\
 Data File : PP035390.D
 Signal(s) : Signal #1: ECD1A.CH Signal #2: ECD2B.CH
 Acq On : 29 Apr 2021 16:24
 Operator : DD\AJ
 Sample : AR1660ICC1000
 Misc :
 ALS Vial : 3 Sample Multiplier: 1

Instrument :
 ECD_P
 ClientSampled :

Integration File signal 1: autoint1.e
 Integration File signal 2: autoint2.e
 Quant Time: Apr 30 05:30:35 2021
 Quant Method : Z:\pestpcbsrv\HPCHEM1\ECD_P\methods\PP042921.M
 Quant Title : GC EXTRACTABLES
 QLast Update : Fri Apr 30 05:27:50 2021
 Response via : Initial Calibration
 Integrator: ChemStation 6890 Scale Mode: Small noise peaks clipped

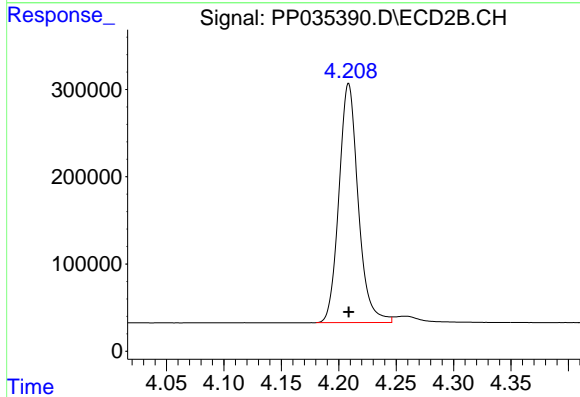
Volume Inj. : 2 µl
 Signal #1 Phase : ZB-MR1 Signal #2 Phase: ZB-MR2
 Signal #1 Info : 30Mx0.32mmx 0.50µ Signal #2 Info : 30M x 0.32mm x 0.25µm



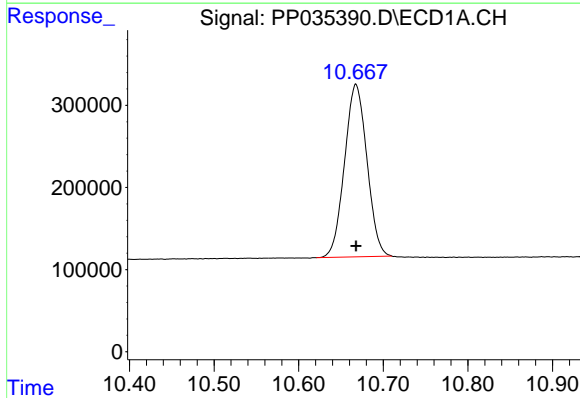


#1 Tetrachloro-m-xylene
 R.T.: 4.791 min
 Delta R.T.: 0.000 min
 Response: 4829293
 Conc: 97.76 ng/ml

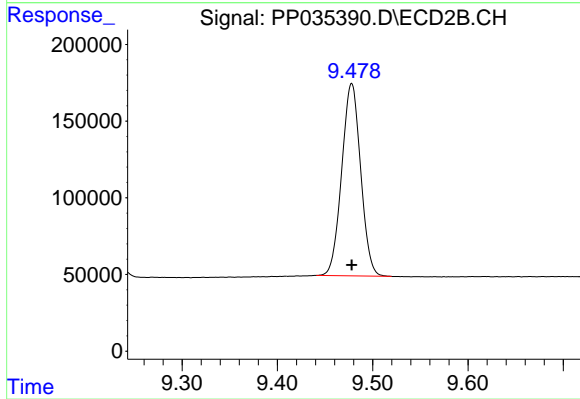
Instrument :
 ECD_P
 ClientSampled :



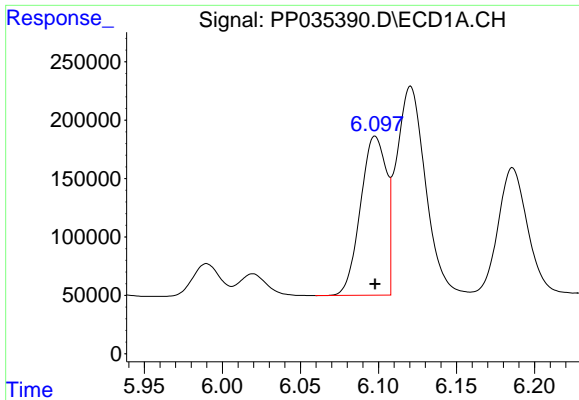
#1 Tetrachloro-m-xylene
 R.T.: 4.209 min
 Delta R.T.: 0.000 min
 Response: 3201207
 Conc: 97.23 ng/ml



#2 Decachlorobiphenyl
 R.T.: 10.668 min
 Delta R.T.: 0.000 min
 Response: 3864865
 Conc: 97.83 ng/ml



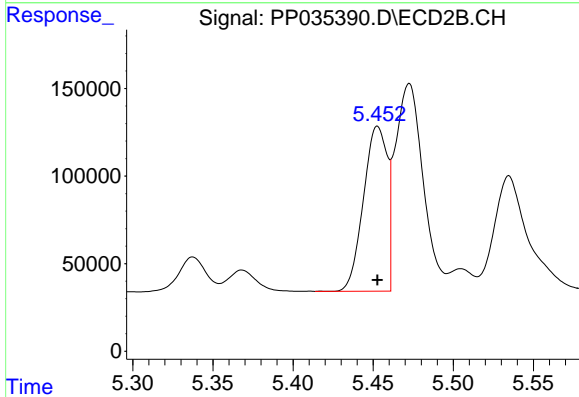
#2 Decachlorobiphenyl
 R.T.: 9.478 min
 Delta R.T.: 0.000 min
 Response: 1731258
 Conc: 95.63 ng/ml



#3 AR-1016-1

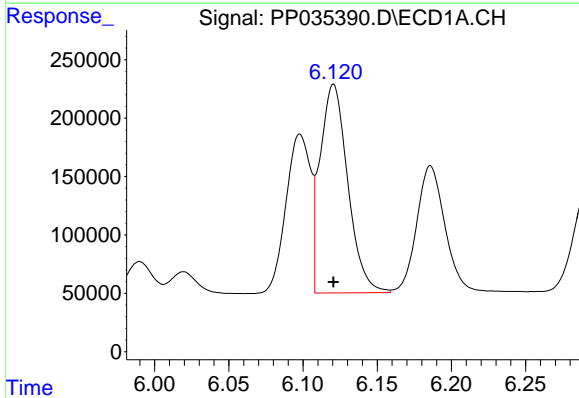
R.T.: 6.098 min
 Delta R.T.: 0.000 min
 Response: 1570571
 Conc: 963.18 ng/ml

Instrument :
 ECD_P
 ClientSampled :



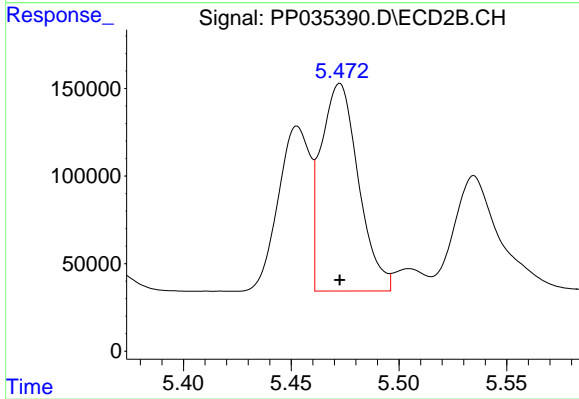
#3 AR-1016-1

R.T.: 5.453 min
 Delta R.T.: 0.000 min
 Response: 968565
 Conc: 954.64 ng/ml



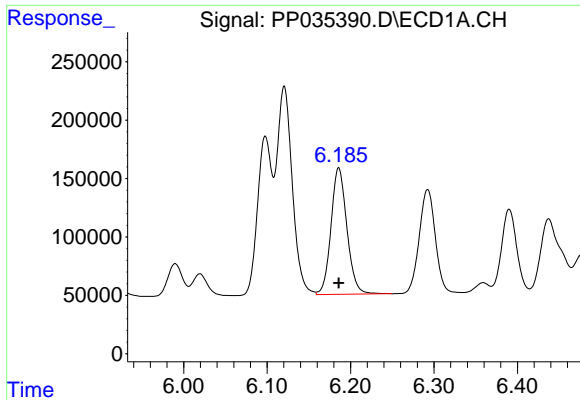
#4 AR-1016-2

R.T.: 6.121 min
 Delta R.T.: 0.000 min
 Response: 2319247
 Conc: 960.14 ng/ml



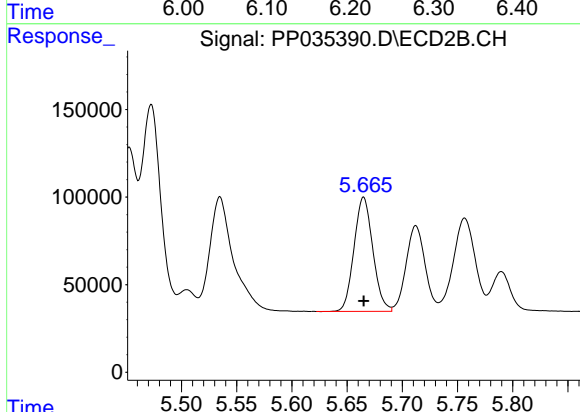
#4 AR-1016-2

R.T.: 5.473 min
 Delta R.T.: 0.000 min
 Response: 1430964
 Conc: 954.59 ng/ml

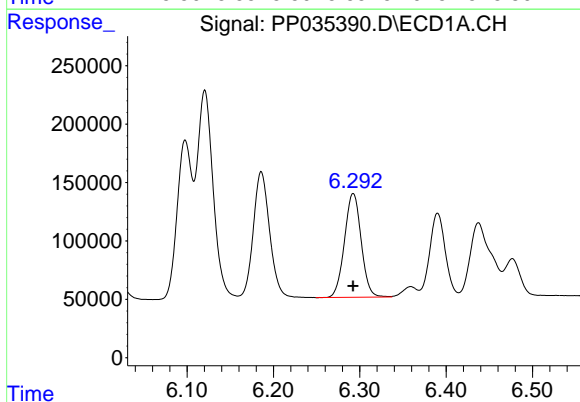


#5 AR-1016-3
 R.T.: 6.186 min
 Delta R.T.: 0.000 min
 Response: 1436309
 Conc: 956.84 ng/ml

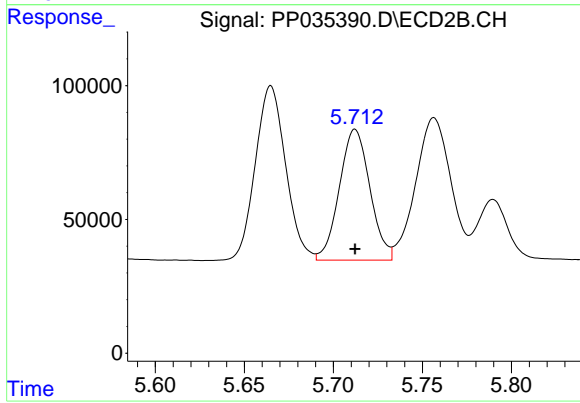
Instrument :
 ECD_P
 ClientSampled :



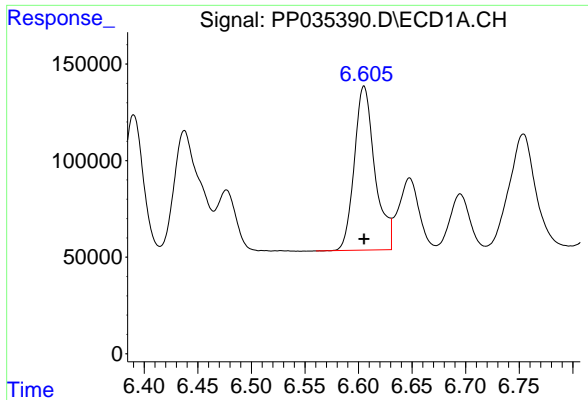
#5 AR-1016-3
 R.T.: 5.665 min
 Delta R.T.: 0.000 min
 Response: 773861
 Conc: 952.75 ng/ml



#6 AR-1016-4
 R.T.: 6.292 min
 Delta R.T.: 0.000 min
 Response: 1194938
 Conc: 962.05 ng/ml



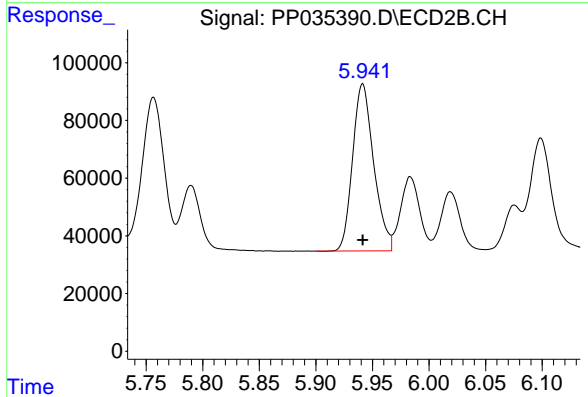
#6 AR-1016-4
 R.T.: 5.712 min
 Delta R.T.: 0.000 min
 Response: 584921
 Conc: 944.51 ng/ml



#7 AR-1016-5

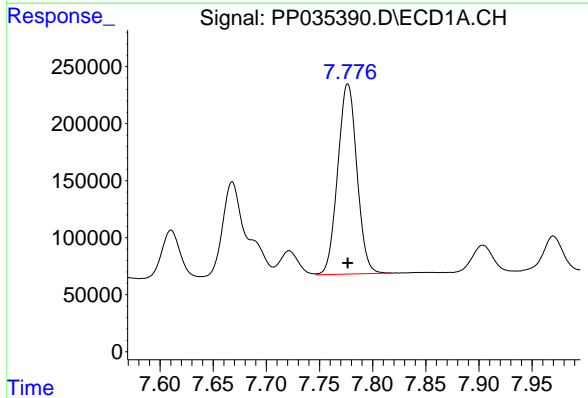
R.T.: 6.605 min
 Delta R.T.: 0.000 min
 Response: 1135083
 Conc: 953.84 ng/ml

Instrument :
 ECD_P
 ClientSampled :



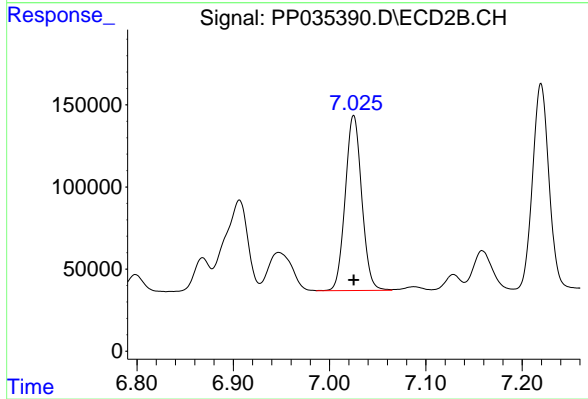
#7 AR-1016-5

R.T.: 5.941 min
 Delta R.T.: 0.000 min
 Response: 751871
 Conc: 946.45 ng/ml



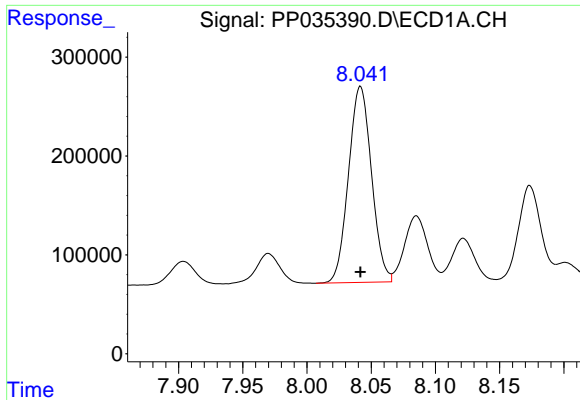
#31 AR-1260-1

R.T.: 7.777 min
 Delta R.T.: 0.000 min
 Response: 2095810
 Conc: 959.07 ng/ml



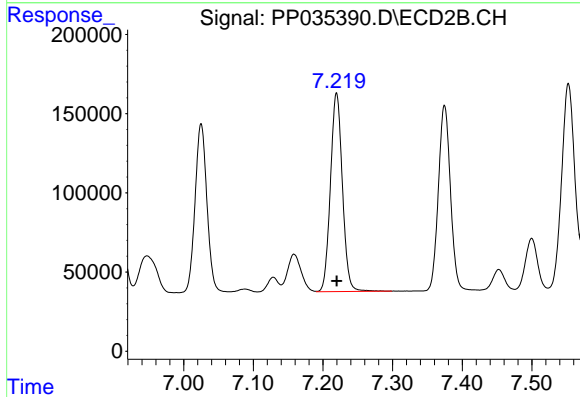
#31 AR-1260-1

R.T.: 7.025 min
 Delta R.T.: 0.000 min
 Response: 1263327
 Conc: 947.97 ng/ml

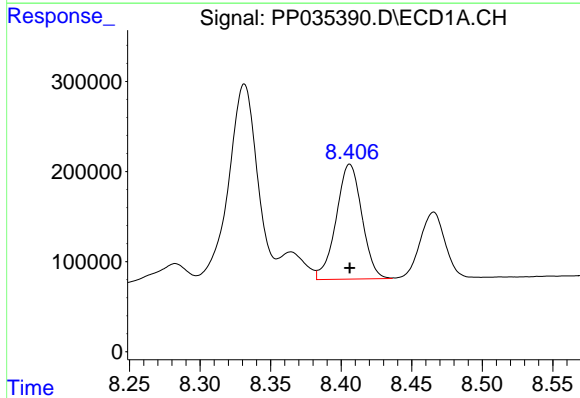


#32 AR-1260-2
 R.T.: 8.042 min
 Delta R.T.: 0.000 min
 Response: 2473104
 Conc: 963.48 ng/ml

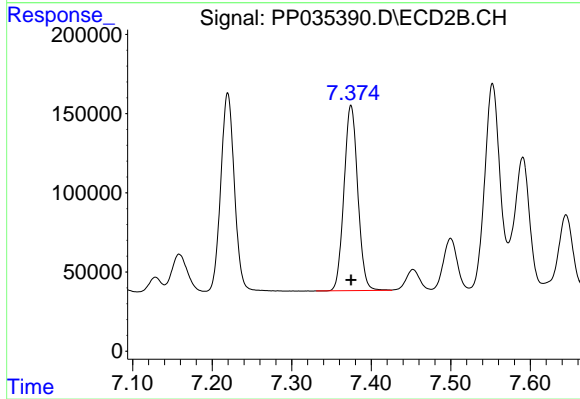
Instrument :
 ECD_P
 ClientSampled :



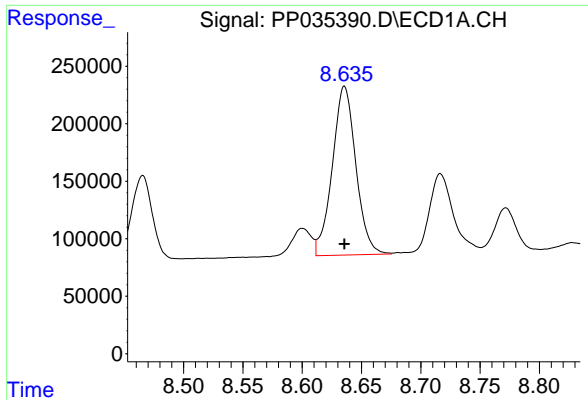
#32 AR-1260-2
 R.T.: 7.220 min
 Delta R.T.: 0.000 min
 Response: 1494005
 Conc: 950.04 ng/ml



#33 AR-1260-3
 R.T.: 8.406 min
 Delta R.T.: 0.000 min
 Response: 1620051
 Conc: 970.48 ng/ml

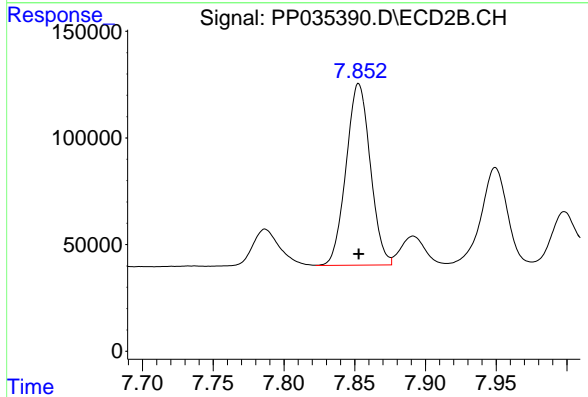


#33 AR-1260-3
 R.T.: 7.375 min
 Delta R.T.: 0.000 min
 Response: 1407772
 Conc: 949.82 ng/ml

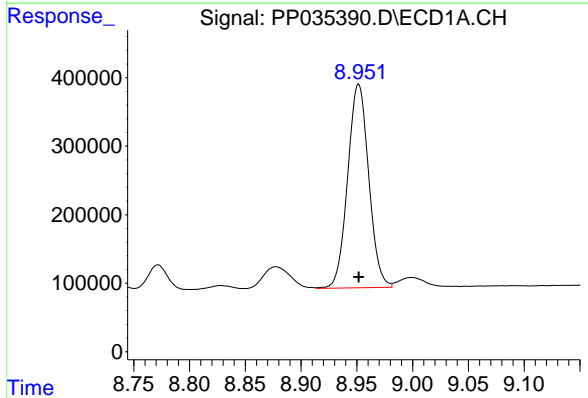


#34 AR-1260-4
 R.T.: 8.636 min
 Delta R.T.: 0.000 min
 Response: 2027952
 Conc: 972.75 ng/ml

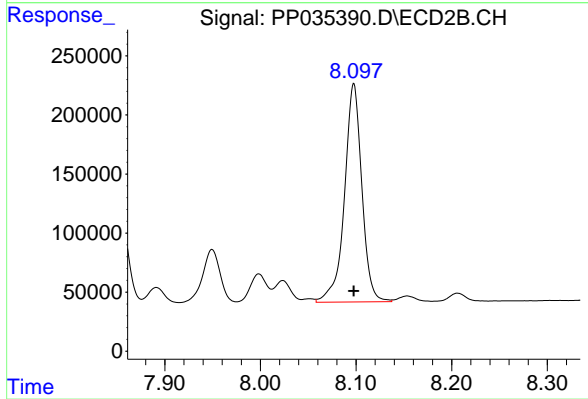
Instrument :
 ECD_P
 ClientSampled :



#34 AR-1260-4
 R.T.: 7.853 min
 Delta R.T.: 0.000 min
 Response: 1013976
 Conc: 951.64 ng/ml



#35 AR-1260-5
 R.T.: 8.952 min
 Delta R.T.: 0.000 min
 Response: 3905599
 Conc: 984.34 ng/ml



#35 AR-1260-5
 R.T.: 8.098 min
 Delta R.T.: 0.000 min
 Response: 2344978
 Conc: 967.02 ng/ml