

Data Path : Z:\pestpcbsrv\HPCHEM1\ECD\_P\Data\PP042921\  
 Data File : PP035412.D  
 Signal(s) : Signal #1: ECD1A.CH Signal #2: ECD2B.CH  
 Acq On : 29 Apr 2021 22:37  
 Operator : DD\AJ  
 Sample : AR1262ICC1000  
 Misc :  
 ALS Vial : 25 Sample Multiplier: 1

Instrument :  
 ECD\_P  
 ClientSampleId :  
 AR1262ICC1000

Integration File signal 1: autoint1.e  
 Integration File signal 2: autoint2.e  
 Quant Time: Apr 30 06:21:37 2021  
 Quant Method : Z:\pestpcbsrv\HPCHEM1\ECD\_P\methods\PP042921.M  
 Quant Title : GC EXTRACTABLES  
 QLast Update : Fri Apr 30 06:17:24 2021  
 Response via : Initial Calibration  
 Integrator: ChemStation 6890 Scale Mode: Small noise peaks clipped

Volume Inj. : 2 µl  
 Signal #1 Phase : ZB-MR1 Signal #2 Phase: ZB-MR2  
 Signal #1 Info : 30Mx0.32mmx 0.50µ Signal #2 Info : 30M x 0.32mm x 0.25µm

Compound	RT#1	RT#2	Resp#1	Resp#2	ng/ml	ng/ml
-----						
System Monitoring Compounds						
1) SA Tetrachlo...	4.789	4.208	4681696	3229229	98.266	97.374
2) SA Decachlor...	10.666	9.475	4051788	1919713	96.767	95.521
Target Compounds						
36) L8 AR-1262-1	8.404	7.551	2619765	871066	965.720	954.600
37) L8 AR-1262-2	8.949	8.096	4727332	2754618	980.797	976.233
38) L8 AR-1262-3	9.245	8.379	3226938	1118726	973.891	956.188
39) L8 AR-1262-4	9.334	8.443	2492306	2048362	973.659	962.958
40) L8 AR-1262-5	9.966	8.938	1659440	941538	978.711	970.481
-----						

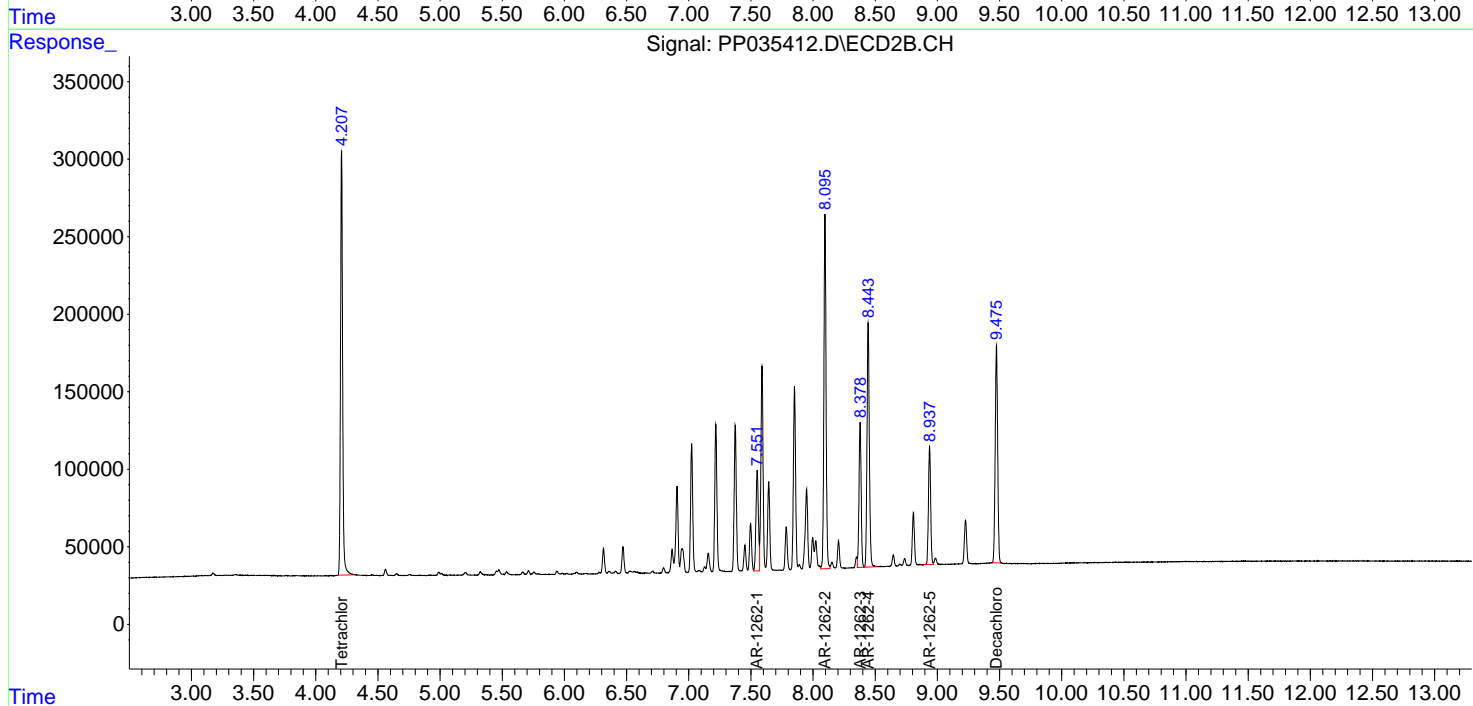
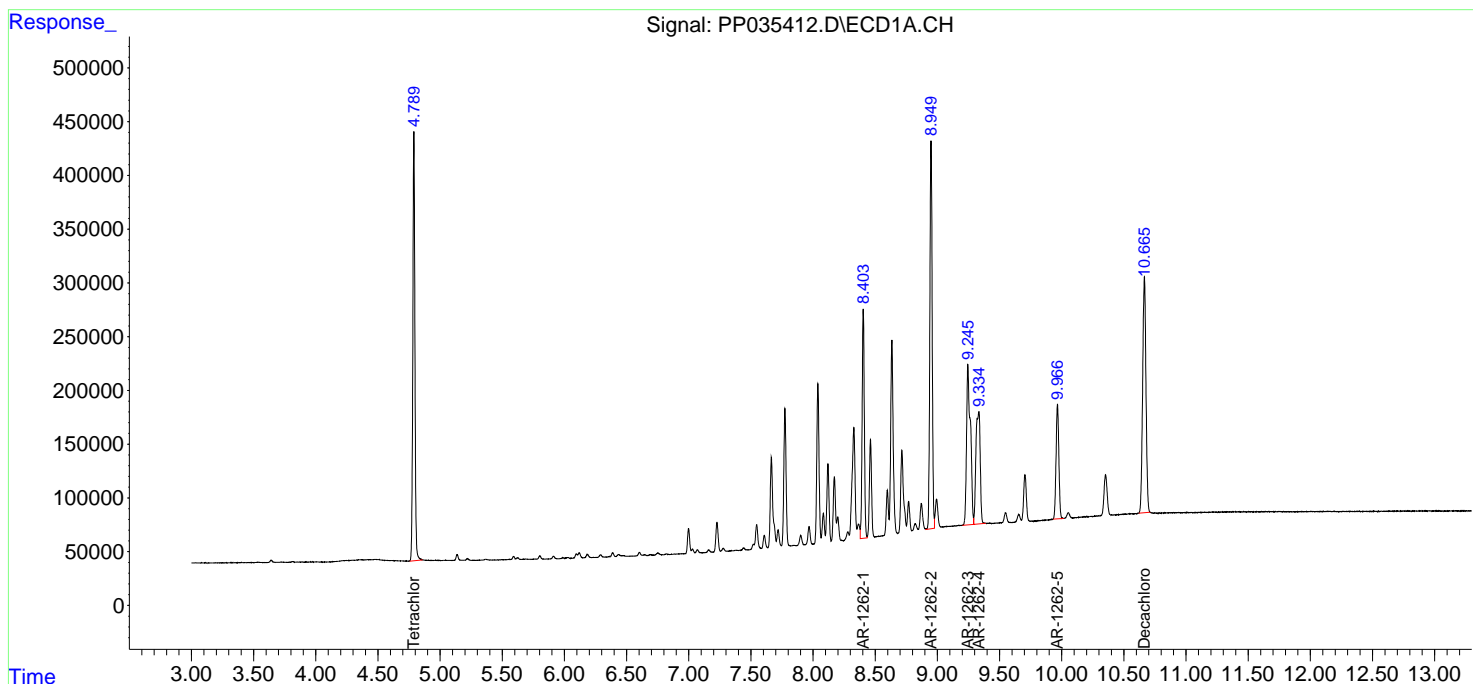
(f)=RT Delta > 1/2 Window (#)=Amounts differ by > 25% (m)=manual int.

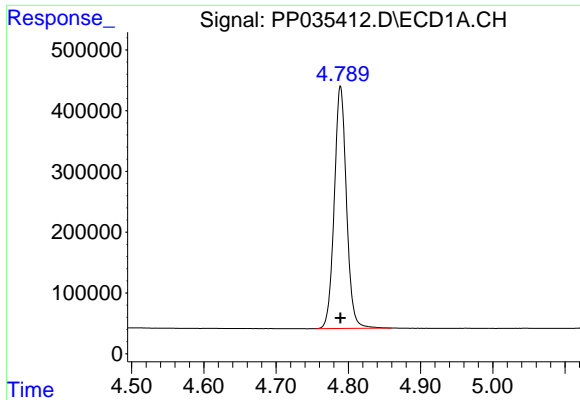
Data Path : Z:\pestpcbsrv\HPCHEM1\ECD\_P\Data\PP042921\  
 Data File : PP035412.D  
 Signal(s) : Signal #1: ECD1A.CH Signal #2: ECD2B.CH  
 Acq On : 29 Apr 2021 22:37  
 Operator : DD\AJ  
 Sample : AR1262ICC1000  
 Misc :  
 ALS Vial : 25 Sample Multiplier: 1

Instrument :  
 ECD\_P  
 ClientSampled :  
 AR1262ICC1000

Integration File signal 1: autoint1.e  
 Integration File signal 2: autoint2.e  
 Quant Time: Apr 30 06:21:37 2021  
 Quant Method : Z:\pestpcbsrv\HPCHEM1\ECD\_P\methods\PP042921.M  
 Quant Title : GC EXTRACTABLES  
 QLast Update : Fri Apr 30 06:17:24 2021  
 Response via : Initial Calibration  
 Integrator: ChemStation 6890 Scale Mode: Small noise peaks clipped

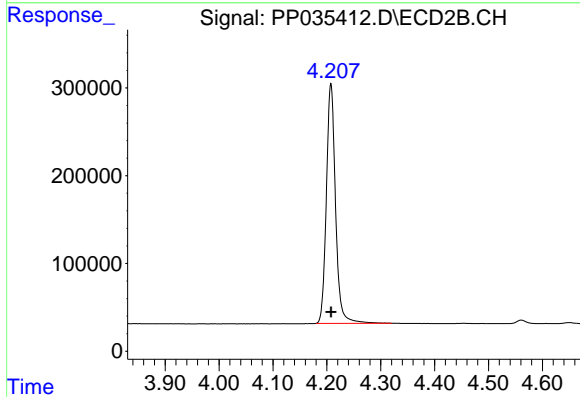
Volume Inj. : 2 µl  
 Signal #1 Phase : ZB-MR1 Signal #2 Phase: ZB-MR2  
 Signal #1 Info : 30Mx0.32mmx 0.50µ Signal #2 Info : 30M x 0.32mm x 0.25µm



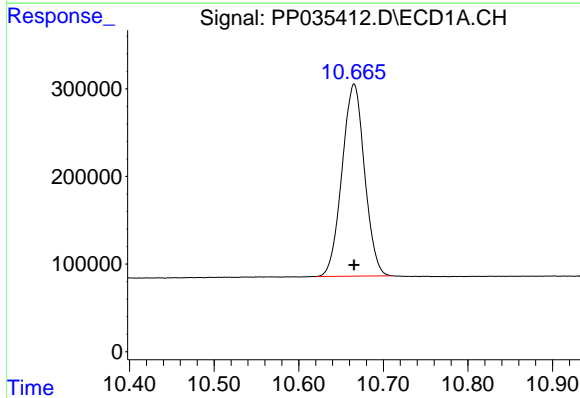


#1 Tetrachloro-m-xylene  
 R.T.: 4.789 min  
 Delta R.T.: 0.000 min  
 Response: 4681696  
 Conc: 98.27 ng/ml

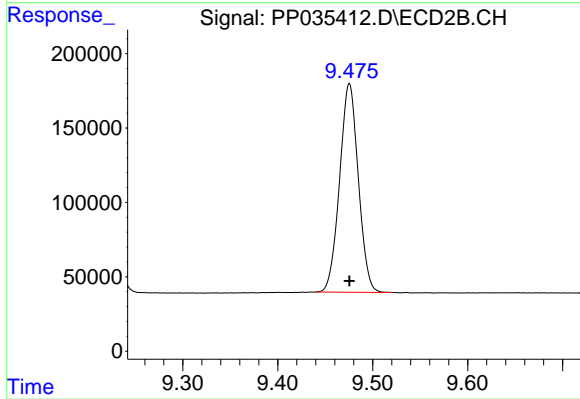
Instrument :  
 ECD\_P  
 ClientSampleId :  
 AR1262ICC1000



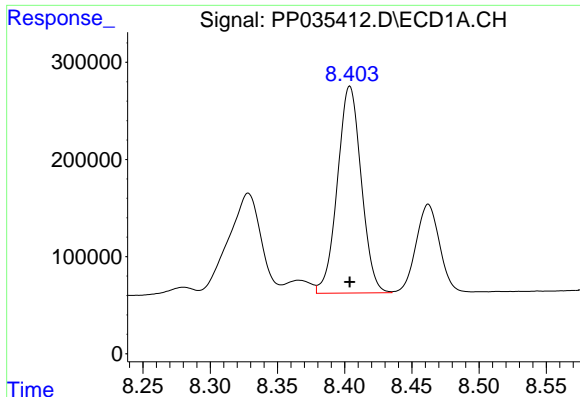
#1 Tetrachloro-m-xylene  
 R.T.: 4.208 min  
 Delta R.T.: 0.000 min  
 Response: 3229229  
 Conc: 97.37 ng/ml



#2 Decachlorobiphenyl  
 R.T.: 10.666 min  
 Delta R.T.: 0.000 min  
 Response: 4051788  
 Conc: 96.77 ng/ml



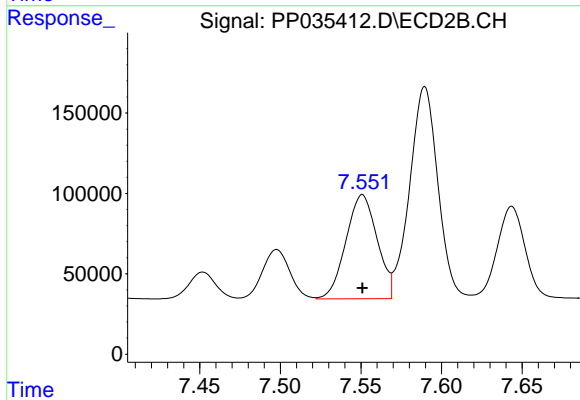
#2 Decachlorobiphenyl  
 R.T.: 9.475 min  
 Delta R.T.: 0.000 min  
 Response: 1919713  
 Conc: 95.52 ng/ml



#36 AR-1262-1

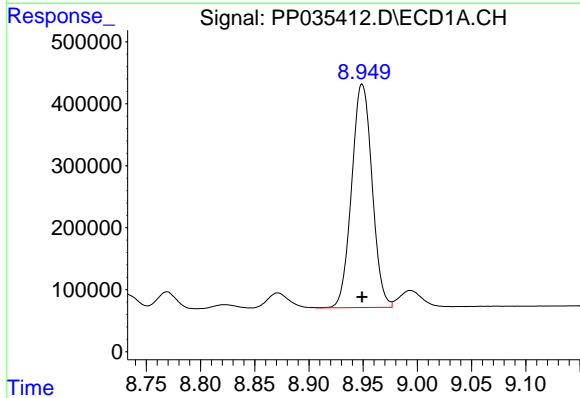
R.T.: 8.404 min  
Delta R.T.: 0.000 min  
Response: 2619765  
Conc: 965.72 ng/ml

Instrument :  
ECD\_P  
ClientSampleId :  
AR1262ICC1000



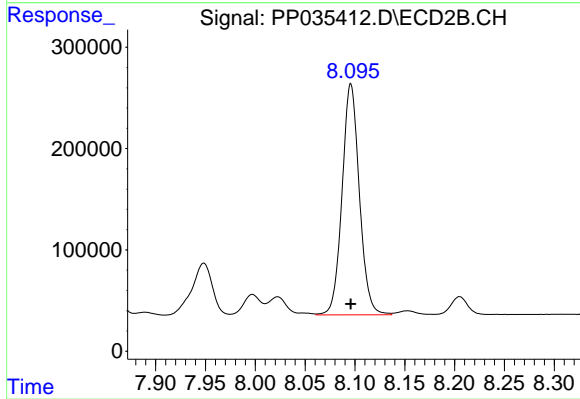
#36 AR-1262-1

R.T.: 7.551 min  
Delta R.T.: 0.000 min  
Response: 871066  
Conc: 954.60 ng/ml



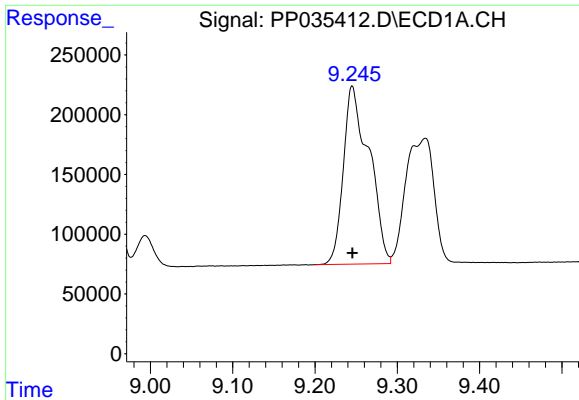
#37 AR-1262-2

R.T.: 8.949 min  
Delta R.T.: 0.000 min  
Response: 4727332  
Conc: 980.80 ng/ml



#37 AR-1262-2

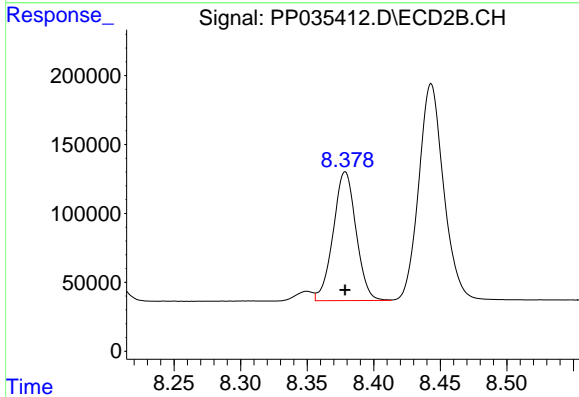
R.T.: 8.096 min  
Delta R.T.: 0.000 min  
Response: 2754618  
Conc: 976.23 ng/ml



#38 AR-1262-3

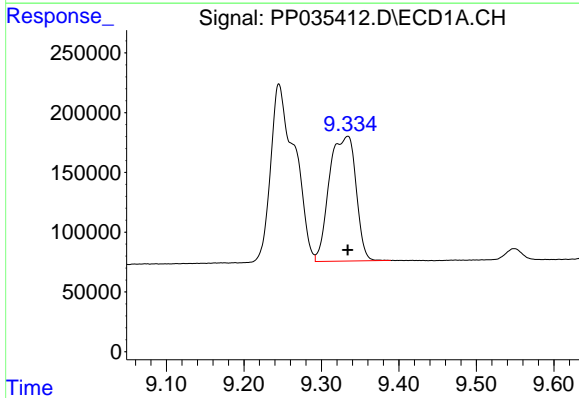
R.T.: 9.245 min  
Delta R.T.: 0.000 min  
Response: 3226938  
Conc: 973.89 ng/ml

Instrument :  
ECD\_P  
ClientSampleId :  
AR1262ICC1000



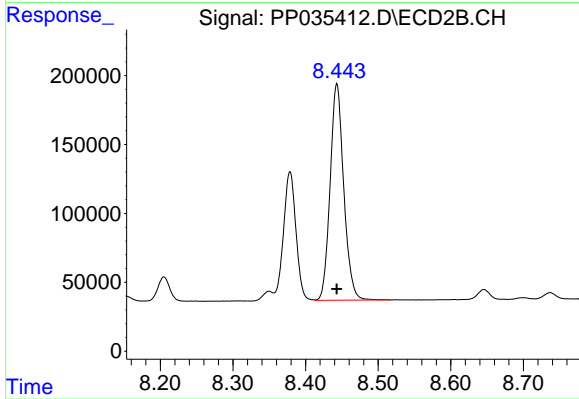
#38 AR-1262-3

R.T.: 8.379 min  
Delta R.T.: 0.000 min  
Response: 1118726  
Conc: 956.19 ng/ml



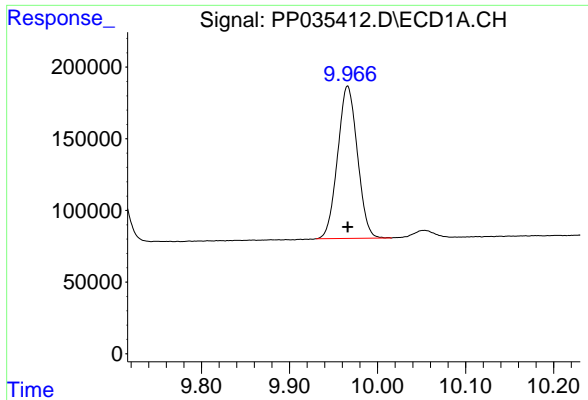
#39 AR-1262-4

R.T.: 9.334 min  
Delta R.T.: 0.000 min  
Response: 2492306  
Conc: 973.66 ng/ml



#39 AR-1262-4

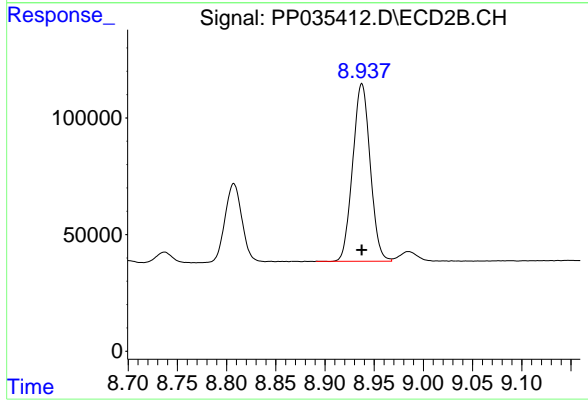
R.T.: 8.443 min  
Delta R.T.: 0.000 min  
Response: 2048362  
Conc: 962.96 ng/ml



#40 AR-1262-5

R.T.: 9.966 min  
Delta R.T.: 0.000 min  
Response: 1659440  
Conc: 978.71 ng/ml

Instrument :  
ECD\_P  
ClientSampleId :  
AR1262ICC1000



#40 AR-1262-5

R.T.: 8.938 min  
Delta R.T.: 0.000 min  
Response: 941538  
Conc: 970.48 ng/ml