

Data Path : P:\HPCHEM1\ECD P\Data\PP043018\  
 Data File : PP025359.D  
 Signal(s) : Signal #1: ECD1A.CH Signal #2: ECD2B.CH  
 Acq On : 30 Apr 2018 13:24  
 Operator : UA/AJ  
 Sample : HSTDICC750  
 Misc :  
 ALS Vial : 5 Sample Multiplier: 1

Instrument :  
 ECD\_P  
 ClientSampleId :

Integration File signal 1: autoint1.e  
 Integration File signal 2: autoint2.e  
 Quant Time: May 01 05:36:20 2018  
 Quant Method : P:\HPCHEM1\ECD\_P\methods\PP043018.M  
 Quant Title : 8080.M  
 QLast Update : Tue May 01 05:36:31 2018  
 Response via : Initial Calibration  
 Integrator: ChemStation 6890 Scale Mode: Large solvent peaks clipped

Volume Inj. : 2 ul  
 Signal #1 Phase : Rtx-CLPesticides Signal #2 Phase: Rtx-CLPesticides2  
 Signal #1 Info : 30M x 0.32mm x0.5 Signal #2 Info : 30M x 0.32mm x 0.25µm

Compound	RT#1	RT#2	Resp#1	Resp#2	nq/ml	nq/ml
-----						
System Monitoring Compounds						
4) S 2,4-DCAA	11.414	11.116	429.1E6	456.7E6	750.000	750.000
Target Compounds						
1) T Dalapon	2.906	2.454	547.1E6	550.8E6	682.500	682.500
2) T 3,5-DICHL...	9.821	9.242	598.3E6	563.3E6	697.500	697.500
3) T 4-Nitroph...	10.991	10.276	258.3E6	243.9E6	682.500	682.500
5) T DICAMBA	11.731	11.410	1783.0E6	1637.6E6	705.000	705.000
6) T MCPP	12.071	11.618	119.2E6	104.5E6	70.500	70.500
7) T MCPA	12.326	12.010	169.8E6	151.0E6	69.750	69.750
8) T DICHLORPROP	12.922	12.520	438.0E6	399.0E6	705.000	705.000
9) T 2,4-D	13.282	13.005	553.1E6	534.8E6	705.000	705.000
10) T Pentachlo...	13.666	13.552	7028.7E6	6221.1E6	712.500	712.500
11) T 2,4,5-TP ...	14.539	14.156	3006.0E6	2611.1E6	712.500	712.500
12) T 2,4,5-T	14.940	14.779	2786.5E6	2161.0E6	712.500	712.500
13) T 2,4-DB	15.686	15.378	345.8E6	304.7E6	712.500	712.500
14) T DINOSEB	17.154	15.775	1944.9E6	1626.5E6	705.000	705.000
15) T Picloram	16.960	17.108	4281.4E6	3515.4E6	712.500	712.500
16) T DCPA	17.523	16.990	3602.1E6	3089.5E6	720.000	720.000
-----						

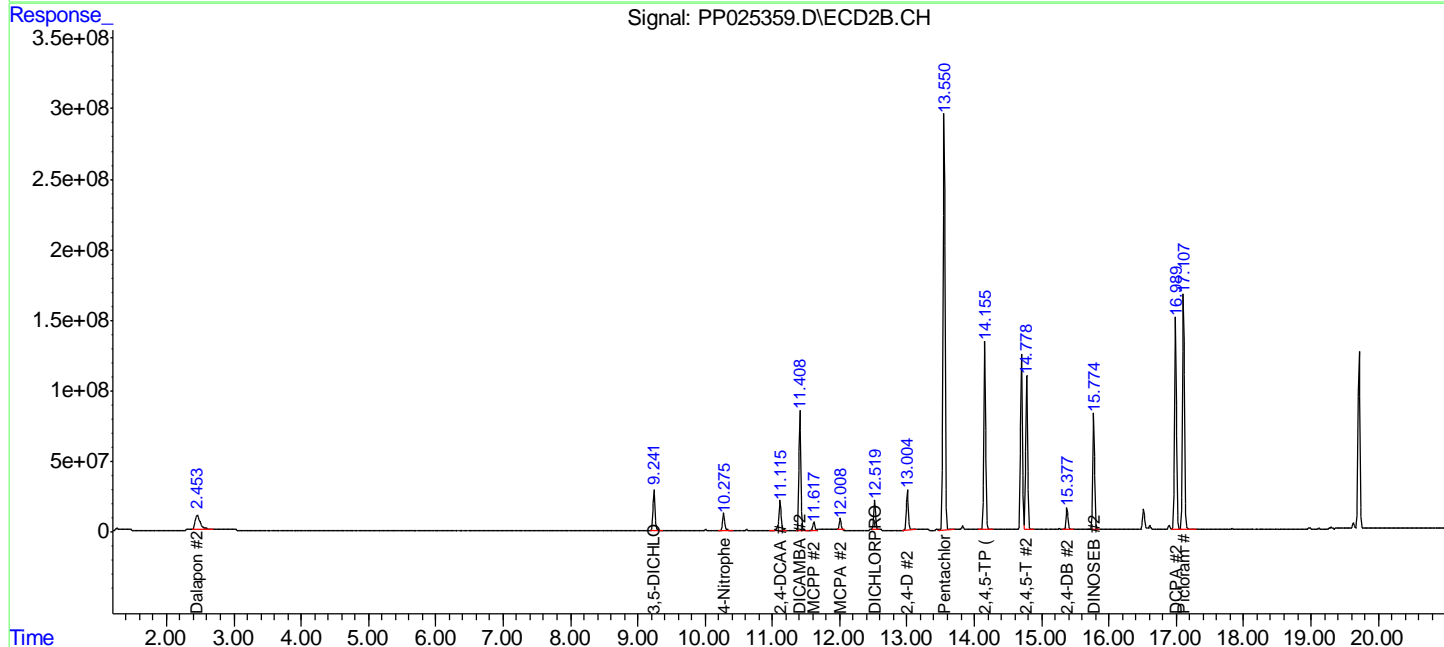
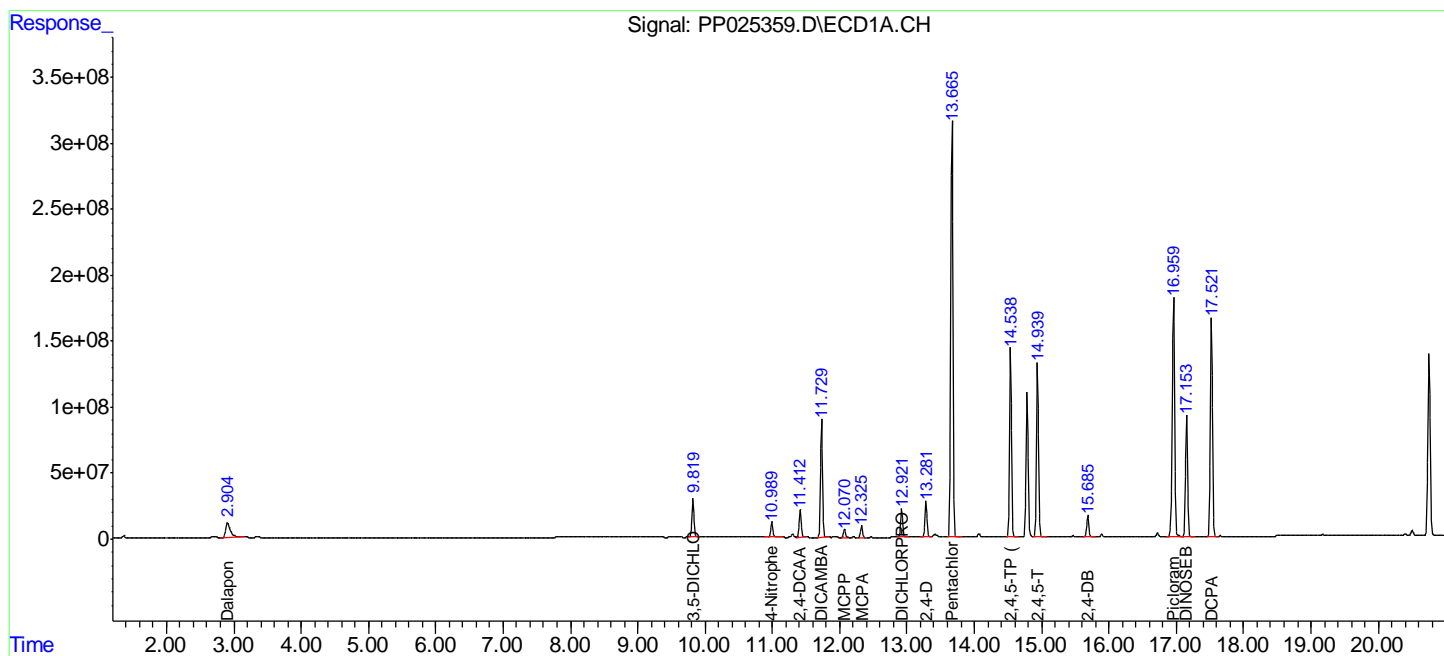
(f)=RT Delta > 1/2 Window (#)=Amounts differ by > 25% (m)=manual int.

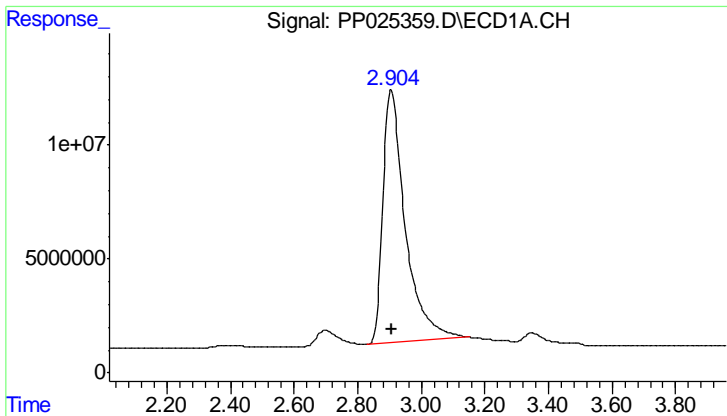
Data Path : P:\HPCHEM1\ECD P\Data\PP043018\  
 Data File : PP025359.D  
 Signal(s) : Signal #1: ECD1A.CH Signal #2: ECD2B.CH  
 Acq On : 30 Apr 2018 13:24  
 Operator : UA/AJ  
 Sample : HSTDICC750  
 Misc :  
 ALS Vial : 5 Sample Multiplier: 1

Instrument :  
 ECD\_P  
 ClientSampled :

Integration File signal 1: autoint1.e  
 Integration File signal 2: autoint2.e  
 Quant Time: May 01 05:36:20 2018  
 Quant Method : P:\HPCHEM1\ECD\_P\methods\PP043018.M  
 Quant Title : 8080.M  
 QLast Update : Tue May 01 05:36:31 2018  
 Response via : Initial Calibration  
 Integrator: ChemStation 6890 Scale Mode: Large solvent peaks clipped

Volume Inj. : 2 ul  
 Signal #1 Phase : Rtx-CLPesticides Signal #2 Phase: Rtx-CLPesticides2  
 Signal #1 Info : 30M x 0.32mm x0.5 Signal #2 Info : 30M x 0.32mm x 0.25µm

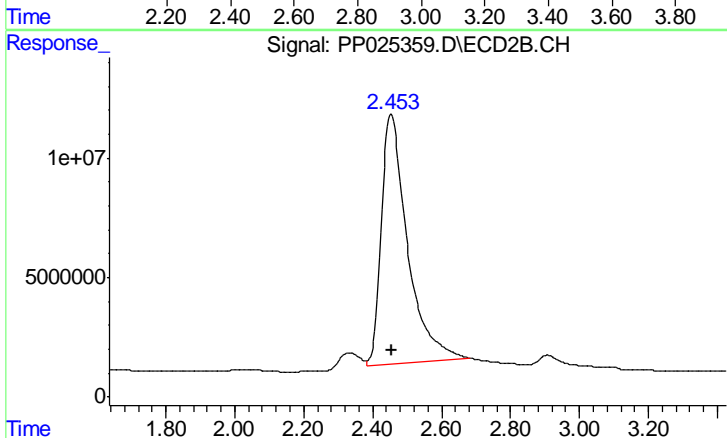




#1 Dalapon

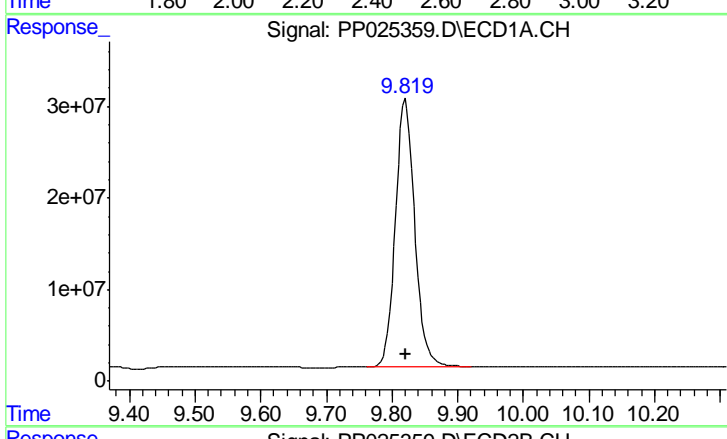
R.T.: 2.906 min  
 Delta R.T.: 0.000 min  
 Response: 547115541  
 Conc: 682.50 ng/ml

Instrument :  
 ECD\_P  
 ClientSampled :



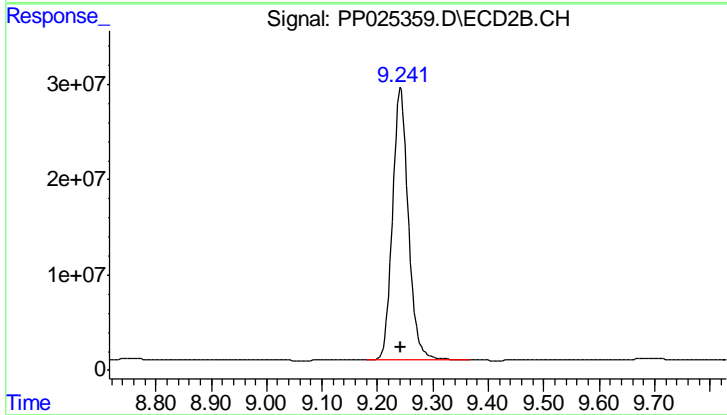
#1 Dalapon

R.T.: 2.454 min  
 Delta R.T.: 0.000 min  
 Response: 550764777  
 Conc: 682.50 ng/ml



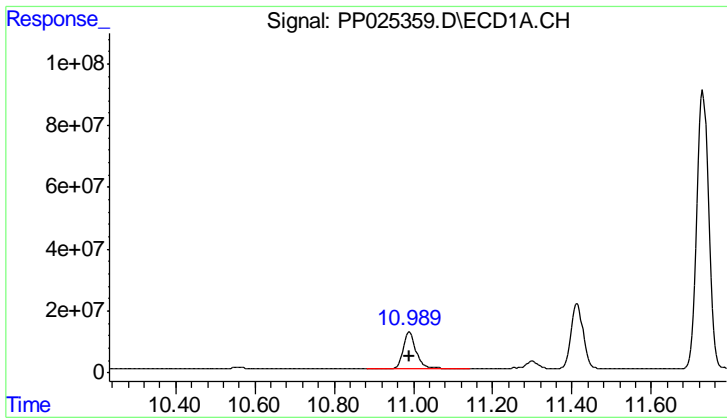
#2 3,5-DICHLOROBENZOIC ACID

R.T.: 9.821 min  
 Delta R.T.: 0.000 min  
 Response: 598274391  
 Conc: 697.50 ng/ml



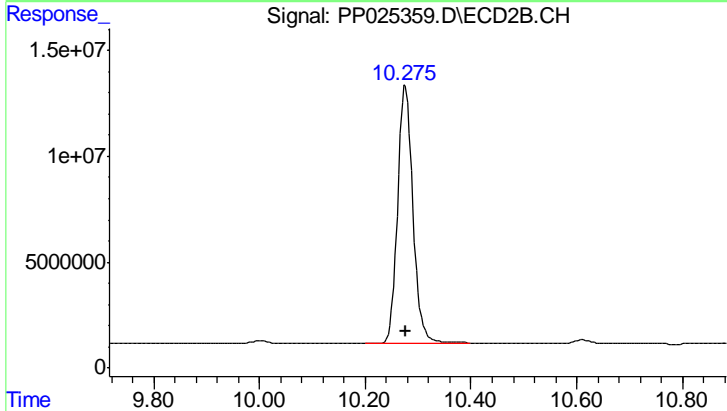
#2 3,5-DICHLOROBENZOIC ACID

R.T.: 9.242 min  
 Delta R.T.: 0.000 min  
 Response: 563269107  
 Conc: 697.50 ng/ml

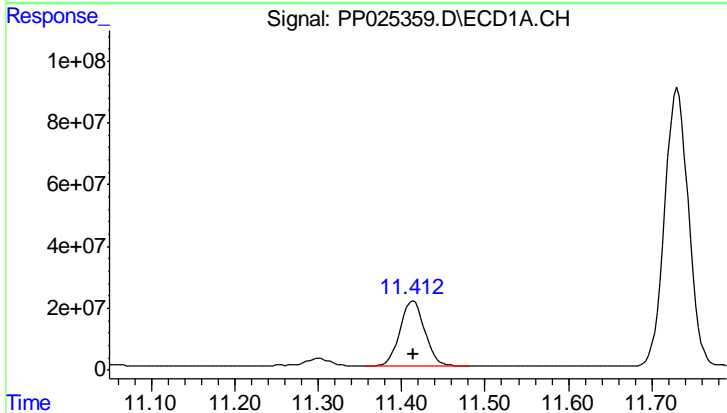


#3 4-Nitrophenol  
 R.T.: 10.991 min  
 Delta R.T.: 0.000 min  
 Response: 258296599  
 Conc: 682.50 ng/ml

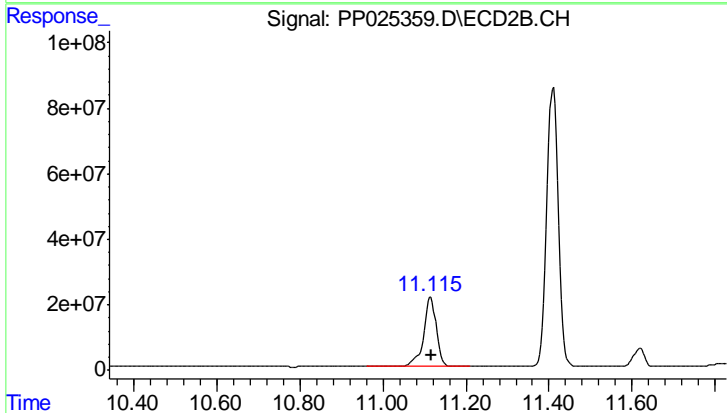
Instrument :  
 ECD\_P  
 ClientSampled :



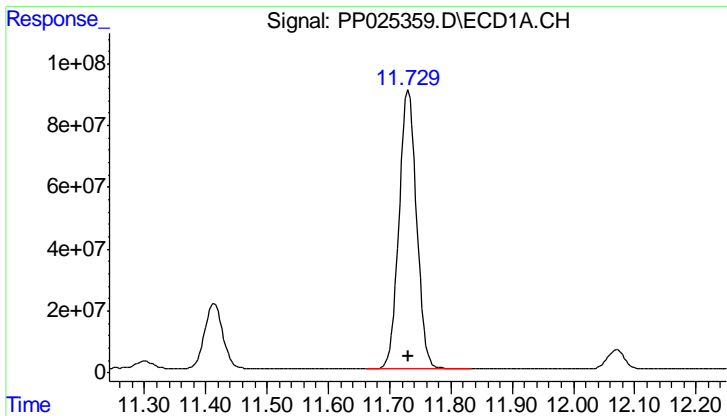
#3 4-Nitrophenol  
 R.T.: 10.276 min  
 Delta R.T.: 0.000 min  
 Response: 243873498  
 Conc: 682.50 ng/ml



#4 2,4-DCAA  
 R.T.: 11.414 min  
 Delta R.T.: 0.000 min  
 Response: 429087143  
 Conc: 750.00 ng/ml



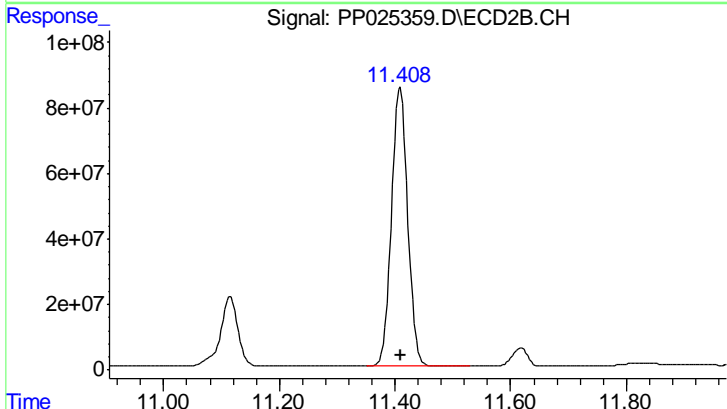
#4 2,4-DCAA  
 R.T.: 11.116 min  
 Delta R.T.: 0.000 min  
 Response: 456731746  
 Conc: 750.00 ng/ml



#5 DICAMBA

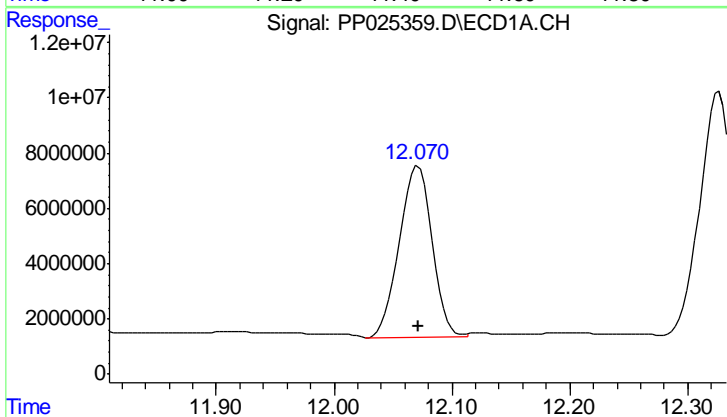
R.T.: 11.731 min  
 Delta R.T.: 0.000 min  
 Response: 1783032459  
 Conc: 705.00 ng/ml

Instrument :  
 ECD\_P  
 ClientSampled :



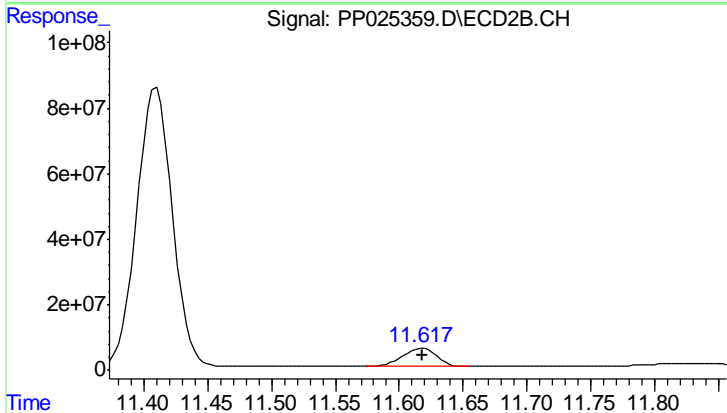
#5 DICAMBA

R.T.: 11.410 min  
 Delta R.T.: 0.000 min  
 Response: 1637578871  
 Conc: 705.00 ng/ml



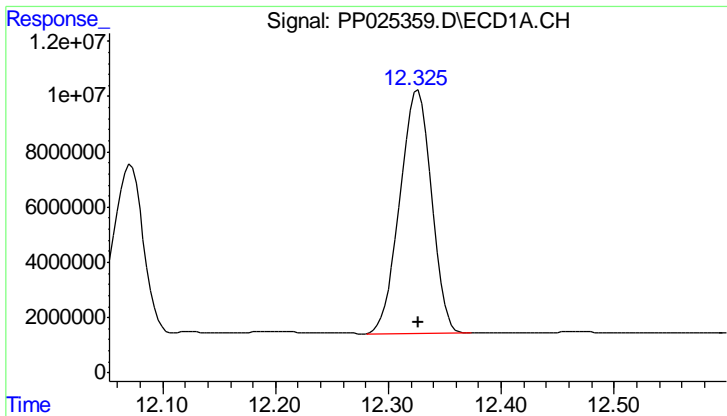
#6 MCPP

R.T.: 12.071 min  
 Delta R.T.: 0.000 min  
 Response: 119167900  
 Conc: 70.50 ug/ml



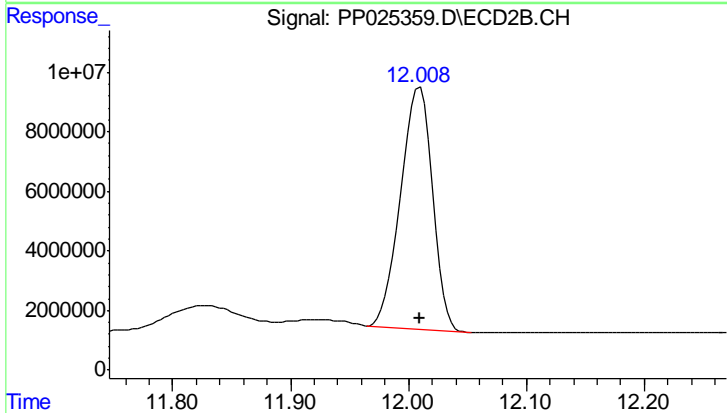
#6 MCPP

R.T.: 11.618 min  
 Delta R.T.: 0.000 min  
 Response: 104511449  
 Conc: 70.50 ug/ml

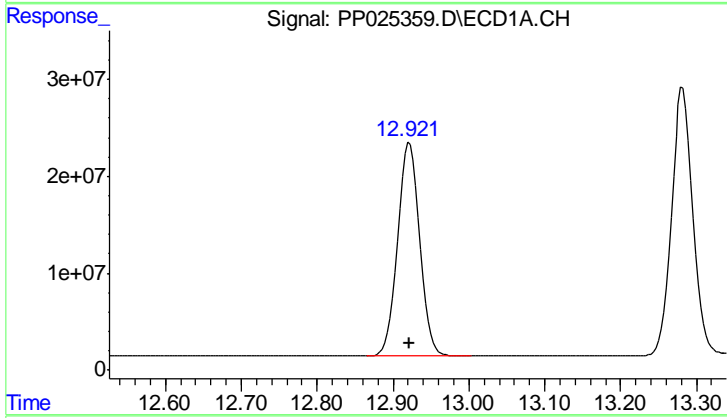


#7 MCPA  
 R.T.: 12.326 min  
 Delta R.T.: 0.000 min  
 Response: 169797827  
 Conc: 69.75 ug/ml

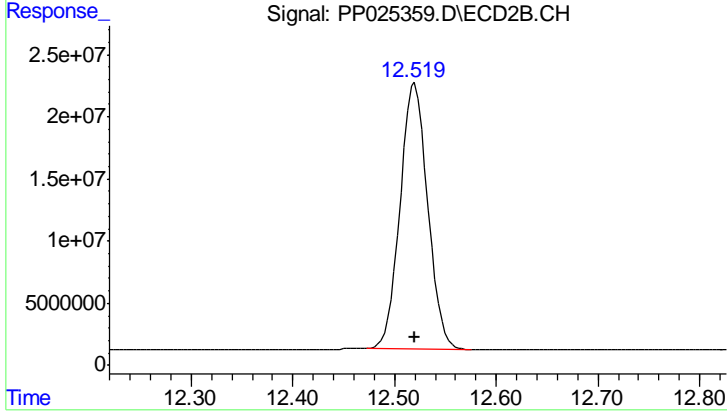
Instrument :  
 ECD\_P  
 ClientSampled :



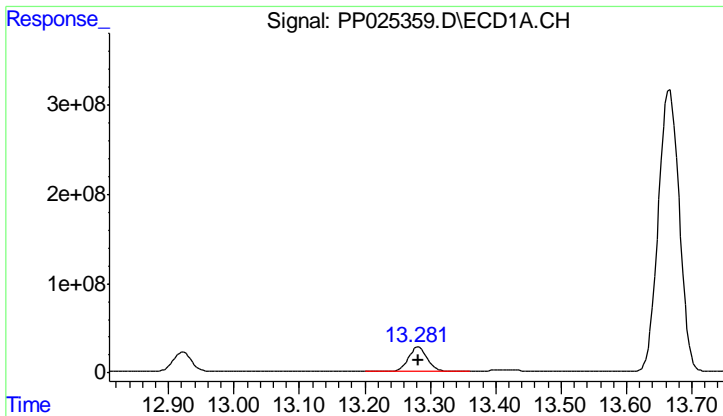
#7 MCPA  
 R.T.: 12.010 min  
 Delta R.T.: 0.000 min  
 Response: 150960979  
 Conc: 69.75 ug/ml



#8 DICHLORPROP  
 R.T.: 12.922 min  
 Delta R.T.: 0.000 min  
 Response: 438021569  
 Conc: 705.00 ng/ml



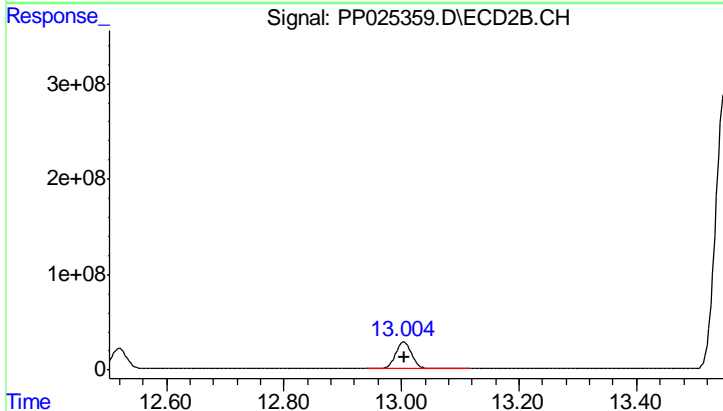
#8 DICHLORPROP  
 R.T.: 12.520 min  
 Delta R.T.: 0.000 min  
 Response: 399002663  
 Conc: 705.00 ng/ml



#9 2,4-D

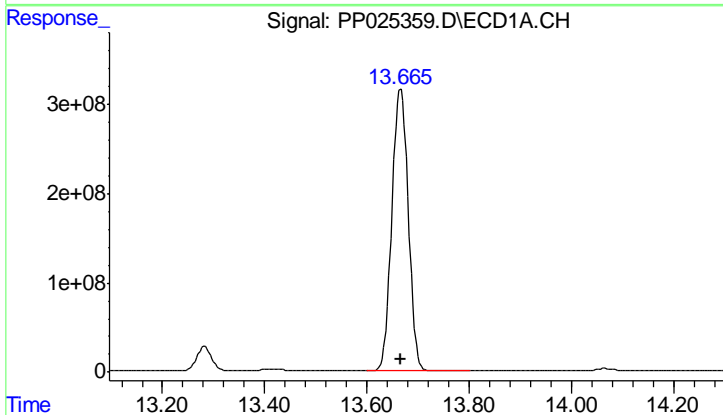
R.T.: 13.282 min  
Delta R.T.: 0.000 min  
Response: 553064874  
Conc: 705.00 ng/ml

Instrument :  
ECD\_P  
ClientSampleId :



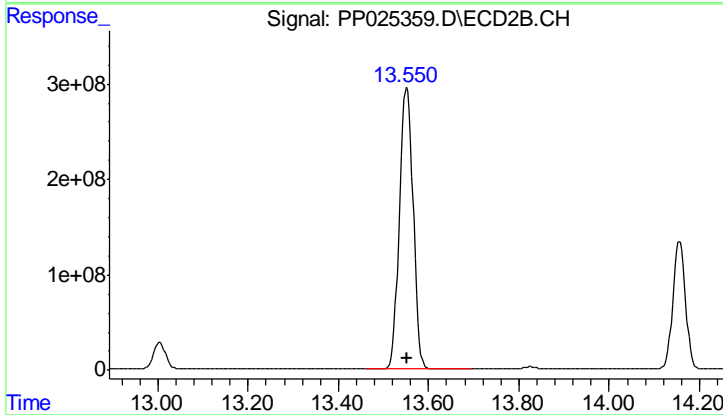
#9 2,4-D

R.T.: 13.005 min  
Delta R.T.: 0.000 min  
Response: 534841620  
Conc: 705.00 ng/ml



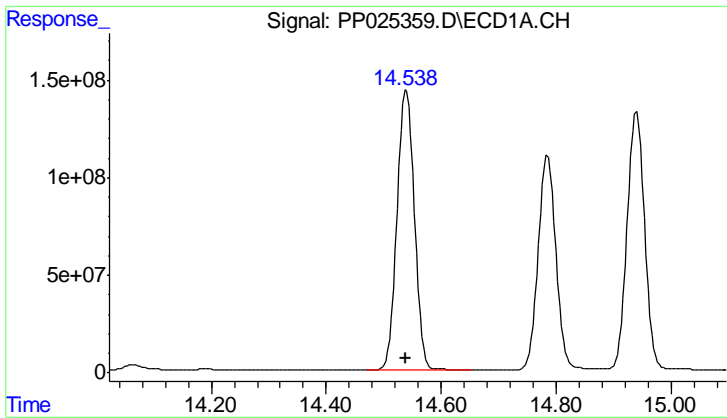
#10 Pentachlorophenol

R.T.: 13.666 min  
Delta R.T.: 0.000 min  
Response: 7028669802  
Conc: 712.50 ng/ml



#10 Pentachlorophenol

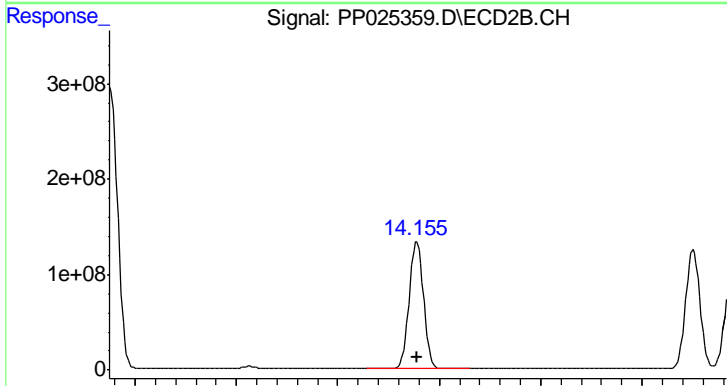
R.T.: 13.552 min  
Delta R.T.: 0.000 min  
Response: 6221066403  
Conc: 712.50 ng/ml



#11 2,4,5-TP (SILVEX)

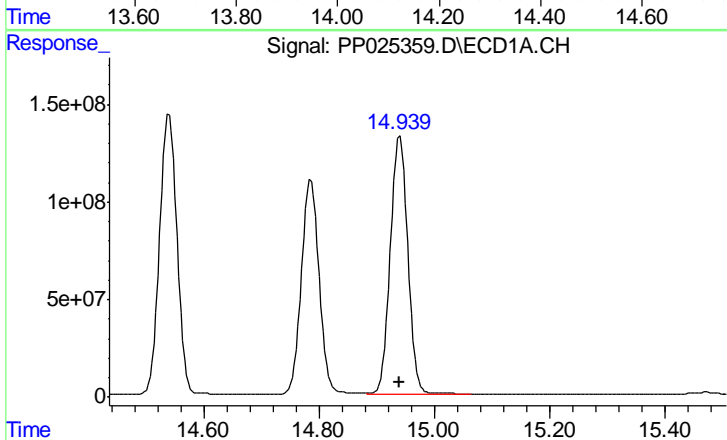
R.T.: 14.539 min  
 Delta R.T.: 0.000 min  
 Response: 3005996779  
 Conc: 712.50 ng/ml

Instrument :  
 ECD\_P  
 ClientSampled :



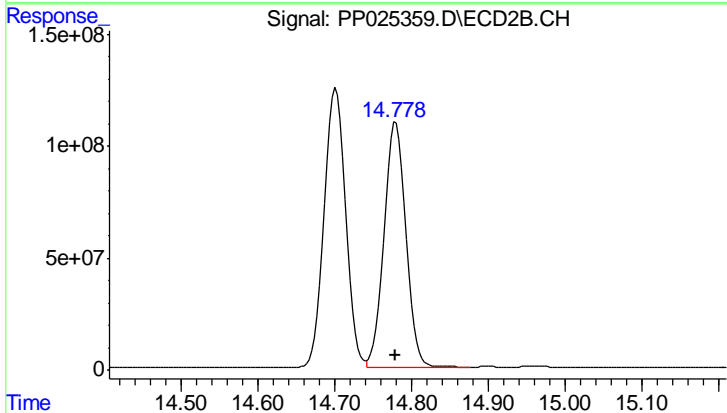
#11 2,4,5-TP (SILVEX)

R.T.: 14.156 min  
 Delta R.T.: 0.000 min  
 Response: 2611050786  
 Conc: 712.50 ng/ml



#12 2,4,5-T

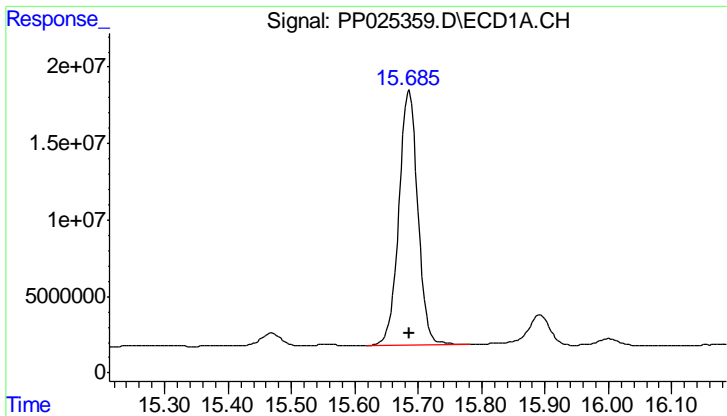
R.T.: 14.940 min  
 Delta R.T.: 0.000 min  
 Response: 2786511948  
 Conc: 712.50 ng/ml



#12 2,4,5-T

R.T.: 14.779 min  
 Delta R.T.: 0.000 min  
 Response: 2160974496  
 Conc: 712.50 ng/ml

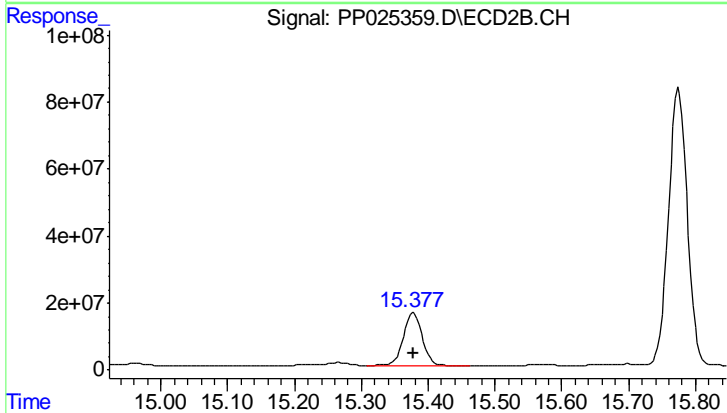




#13 2,4-DB

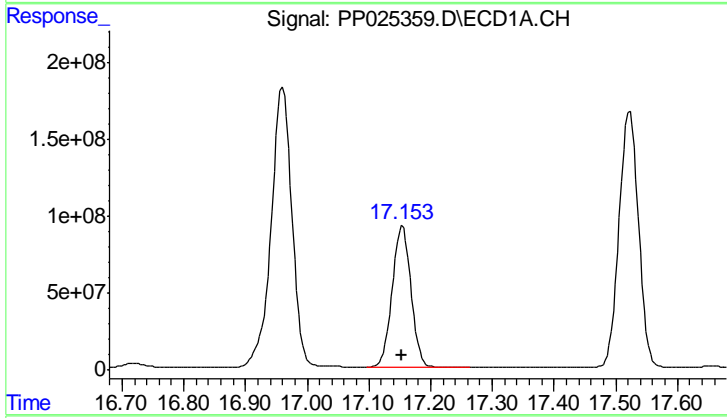
R.T.: 15.686 min  
 Delta R.T.: 0.000 min  
 Response: 345769344  
 Conc: 712.50 ng/ml

Instrument :  
 ECD\_P  
 ClientSampleId :



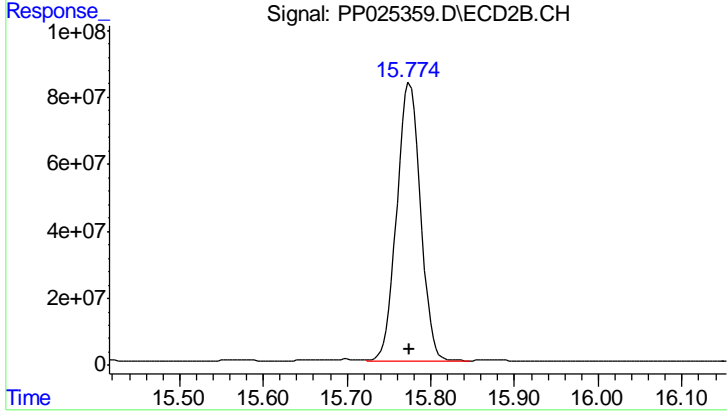
#13 2,4-DB

R.T.: 15.378 min  
 Delta R.T.: 0.000 min  
 Response: 304668818  
 Conc: 712.50 ng/ml



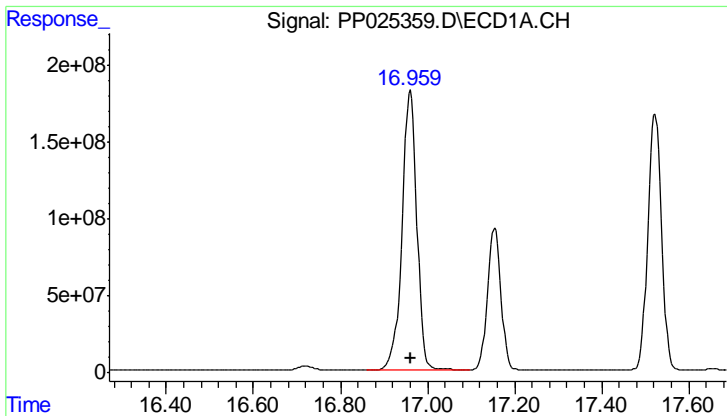
#14 DINOSEB

R.T.: 17.154 min  
 Delta R.T.: 0.000 min  
 Response: 1944920292  
 Conc: 705.00 ng/ml



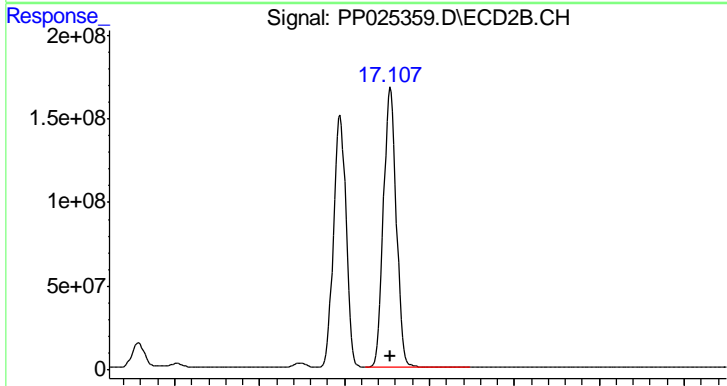
#14 DINOSEB

R.T.: 15.775 min  
 Delta R.T.: 0.000 min  
 Response: 1626464903  
 Conc: 705.00 ng/ml

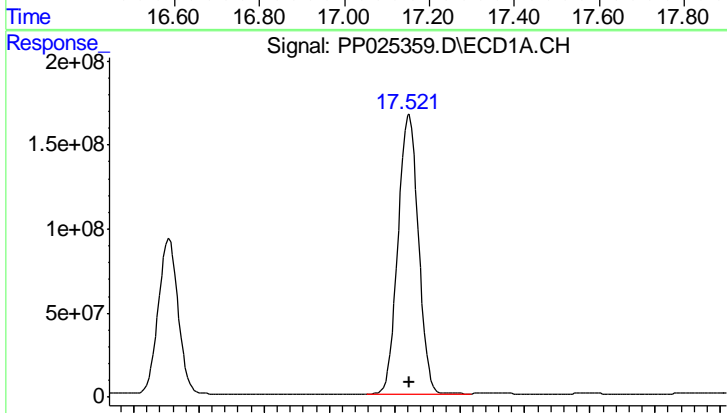


#15 Picloram  
 R.T.: 16.960 min  
 Delta R.T.: 0.000 min  
 Response: 4281394509  
 Conc: 712.50 ng/ml

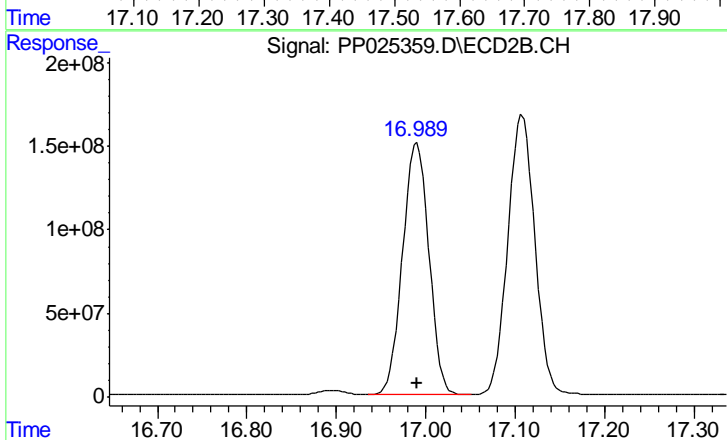
Instrument :  
 ECD\_P  
 ClientSampled :



#15 Picloram  
 R.T.: 17.108 min  
 Delta R.T.: 0.000 min  
 Response: 3515356073  
 Conc: 712.50 ng/ml



#16 DCPA  
 R.T.: 17.523 min  
 Delta R.T.: 0.000 min  
 Response: 3602111535  
 Conc: 720.00 ng/ml



#16 DCPA  
 R.T.: 16.990 min  
 Delta R.T.: 0.000 min  
 Response: 3089512821  
 Conc: 720.00 ng/ml