

Data Path : P:\HPCHEM1\ECD_P\Data\PP043018\
 Data File : PP025380.D
 Signal(s) : Signal #1: ECD1A.CH Signal #2: ECD2B.CH
 Acq On : 01 May 2018 00:26
 Operator : UA/AJ
 Sample : J2616-30
 Misc :
 ALS Vial : 23 Sample Multiplier: 1

Instrument :
 ECD_P
 ClientSampleId :
 CONCRETE-3

Integration File signal 1: autoint1.e
 Integration File signal 2: autoint2.e
 Quant Time: May 01 07:08:32 2018
 Quant Method : P:\HPCHEM1\ECD_P\methods\PP043018.M
 Quant Title : 8080.M
 QLast Update : Tue May 01 05:53:49 2018
 Response via : Initial Calibration
 Integrator: ChemStation 6890 Scale Mode: Large solvent peaks clipped

Volume Inj. : 2 µl
 Signal #1 Phase : Rtx-CLPesticides Signal #2 Phase: Rtx-CLPesticides2
 Signal #1 Info : 30M x 0.32mm x0.5 Signal #2 Info : 30M x 0.32mm x 0.25µm

Compound	RT#1	RT#2	Resp#1	Resp#2	ng/ml	ng/ml

System Monitoring Compounds						
4) S 2,4-DCAA	11.413	11.116	186.2E6	181.9E6	325.465	299.416
Target Compounds						
1) T Dalapon	2.848	0.000	10940281	0	13.682	N.D. #
2) T 3,5-DICHL...	0.000	9.219	0	13809457	N.D.	17.174 #
3) T 4-Nitroph...	11.049	10.275	11048176	6828406	29.429	19.283 #
5) T DICAMBA	11.767	0.000	4229408	0	1.700	N.D. #
6) T MCPPE	12.089	0.000	24624612	0	15.461	N.D. #
8) T DICHLORPROP	12.868	12.463	3558041	1951280	5.738	3.477 #
9) T 2,4-D	13.343	0.000	3476588	0	4.443	N.D. #
10) T Pentachlo...	13.664	0.000	8681882	0	0.878	N.D. #
15) T Picloram	16.959	0.000	4218378	0	0.716	N.D. #

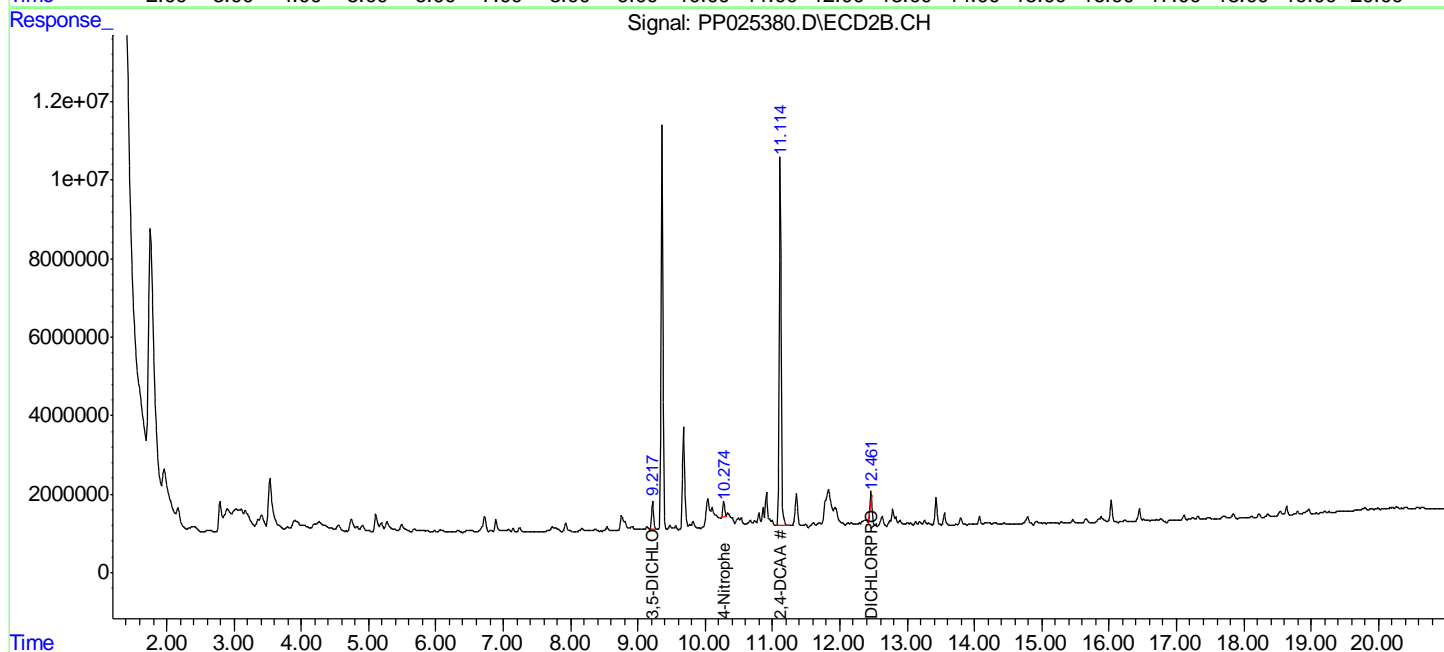
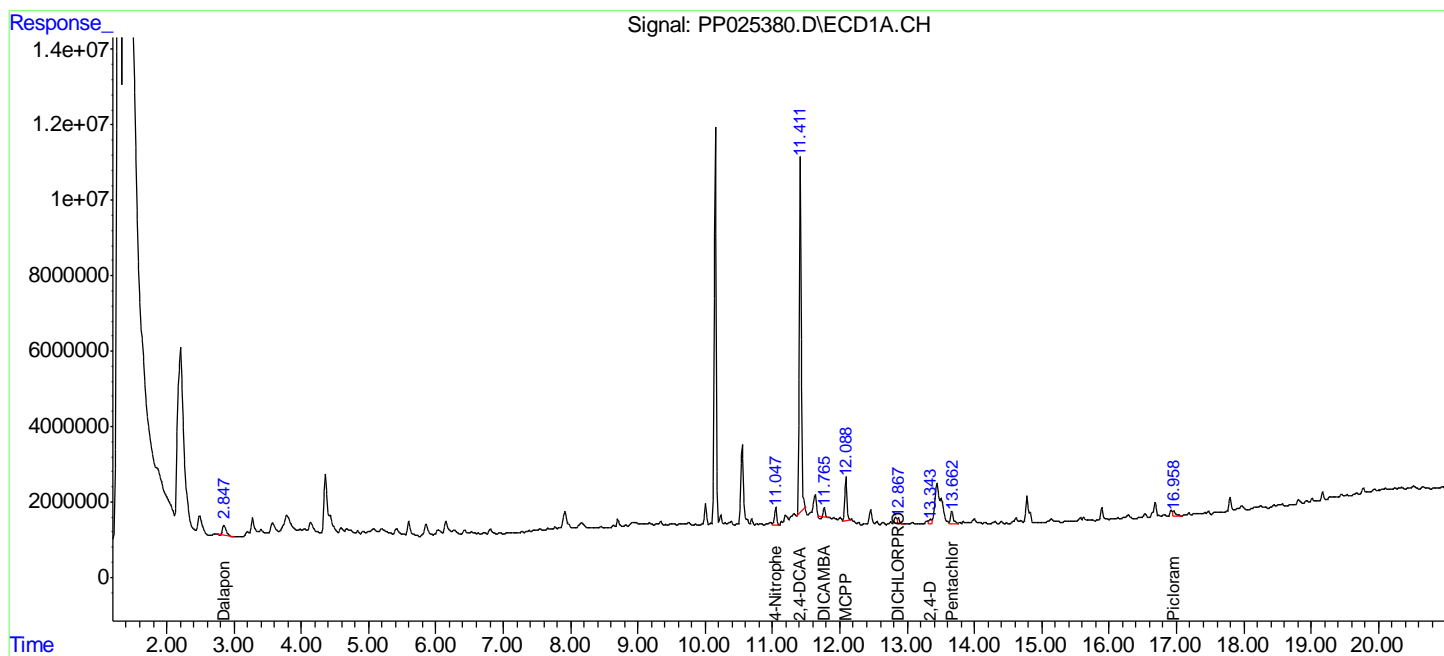
(f)=RT Delta > 1/2 Window (#)=Amounts differ by > 25% (m)=manual int.

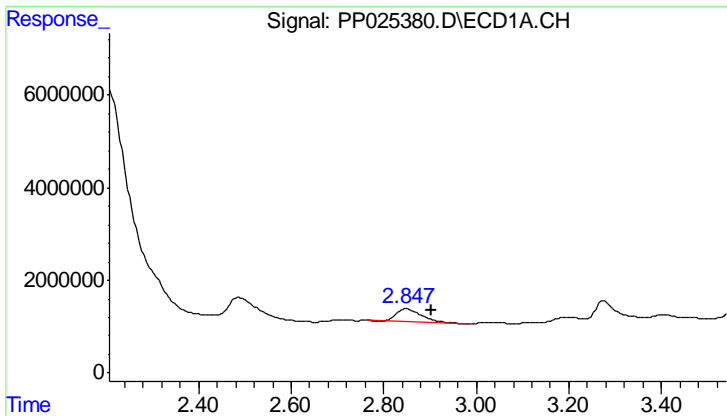
Data Path : P:\HPCHEM1\ECD_P\Data\PP043018\
 Data File : PP025380.D
 Signal(s) : Signal #1: ECD1A.CH Signal #2: ECD2B.CH
 Acq On : 01 May 2018 00:26
 Operator : UA/AJ
 Sample : J2616-30
 Misc :
 ALS Vial : 23 Sample Multiplier: 1

Instrument :
 ECD_P
 ClientSampleId :
 CONCRETE-3

Integration File signal 1: autoint1.e
 Integration File signal 2: autoint2.e
 Quant Time: May 01 07:08:32 2018
 Quant Method : P:\HPCHEM1\ECD_P\methods\PP043018.M
 Quant Title : 8080.M
 QLast Update : Tue May 01 05:53:49 2018
 Response via : Initial Calibration
 Integrator: ChemStation 6890 Scale Mode: Large solvent peaks clipped

Volume Inj. : 2 µl
 Signal #1 Phase : Rtx-CLPesticides Signal #2 Phase: Rtx-CLPesticides2
 Signal #1 Info : 30M x 0.32mm x0.5 Signal #2 Info : 30M x 0.32mm x 0.25µm

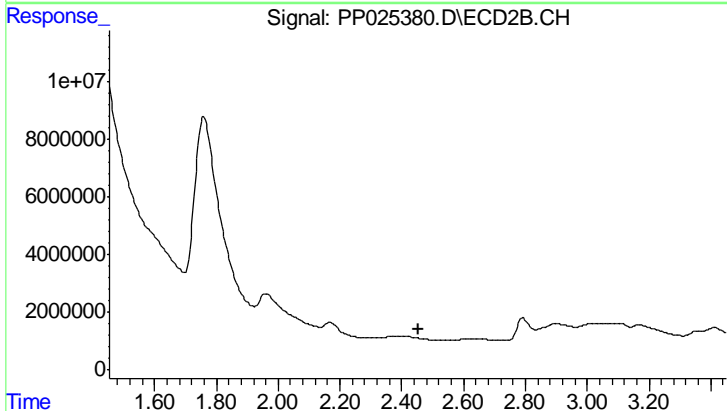




#1 Dalapon

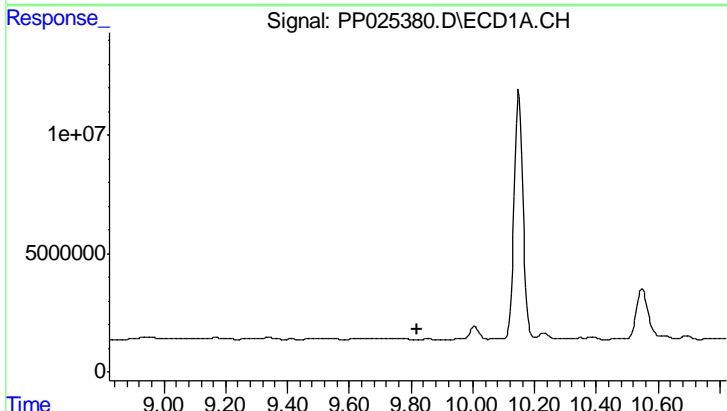
R.T.: 2.848 min
 Delta R.T.: -0.056 min
 Response: 10940281
 Conc: 13.68 ng/ml

Instrument :
 ECD_P
 ClientSampleId :
 CONCRETE-3



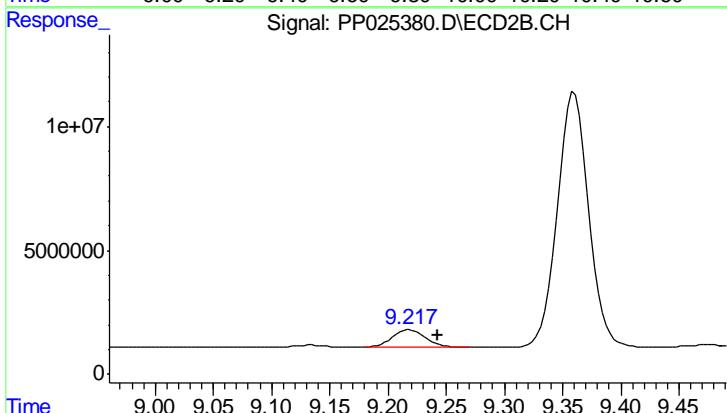
#1 Dalapon

R.T.: 0.000 min
 Exp R.T. : 2.453 min
 Response: 0
 Conc: N.D.



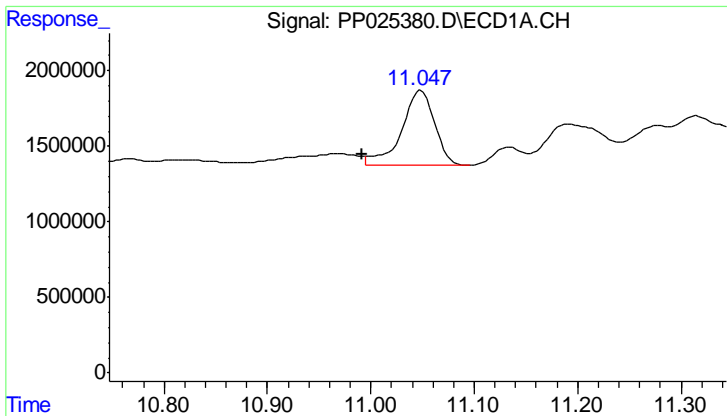
#2 3,5-DICHLOROBENZOIC ACID

R.T.: 0.000 min
 Exp R.T. : 9.821 min
 Response: 0
 Conc: N.D.



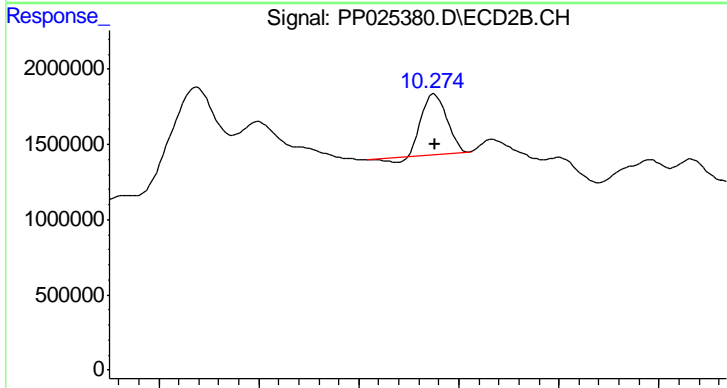
#2 3,5-DICHLOROBENZOIC ACID

R.T.: 9.219 min
 Delta R.T.: -0.024 min
 Response: 13809457
 Conc: 17.17 ng/ml

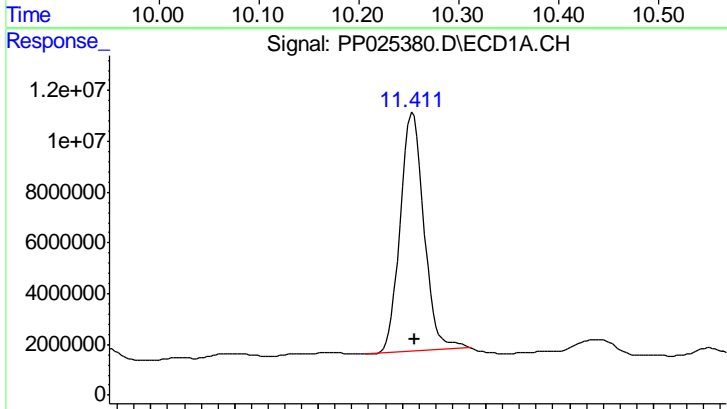


#3 4-Nitrophenol
 R.T.: 11.049 min
 Delta R.T.: 0.057 min
 Response: 11048176
 Conc: 29.43 ng/ml

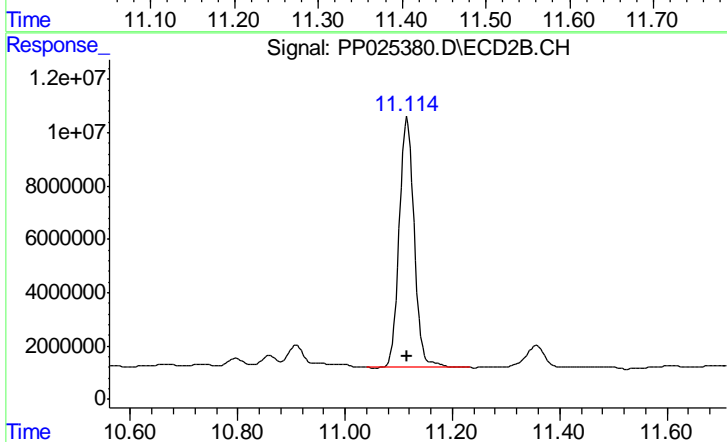
Instrument :
 ECD_P
 ClientSampleId :
 CONCRETE-3



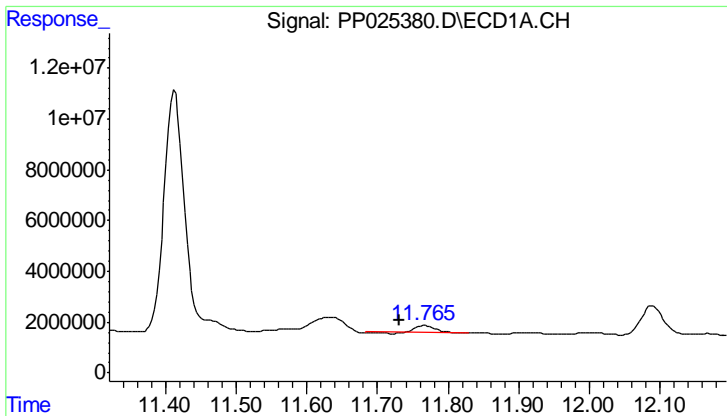
#3 4-Nitrophenol
 R.T.: 10.275 min
 Delta R.T.: -0.001 min
 Response: 6828406
 Conc: 19.28 ng/ml



#4 2,4-DCAA
 R.T.: 11.413 min
 Delta R.T.: -0.002 min
 Response: 186208719
 Conc: 325.46 ng/ml



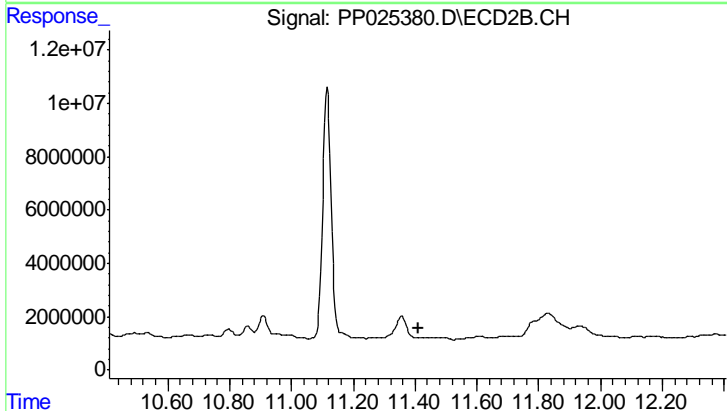
#4 2,4-DCAA
 R.T.: 11.116 min
 Delta R.T.: 0.000 min
 Response: 181932270
 Conc: 299.42 ng/ml



#5 DICAMBA

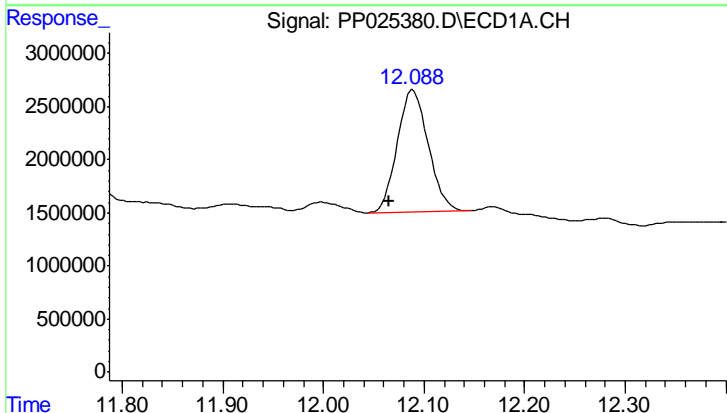
R.T.: 11.767 min
 Delta R.T.: 0.036 min
 Response: 4229408
 Conc: 1.70 ng/ml

Instrument :
 ECD_P
 ClientSampled :
 CONCRETE-3



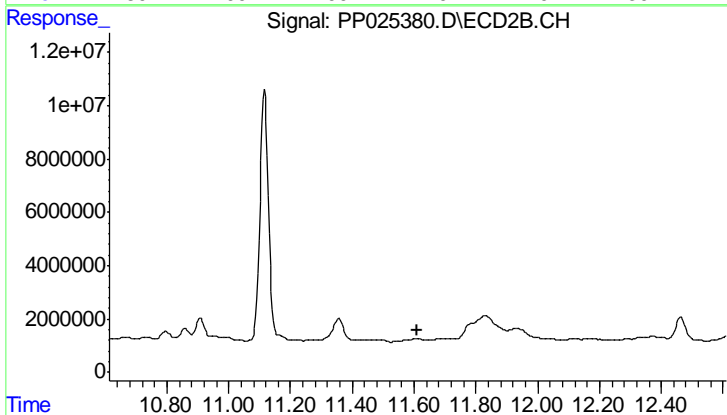
#5 DICAMBA

R.T.: 0.000 min
 Exp R.T. : 11.410 min
 Response: 0
 Conc: N.D.



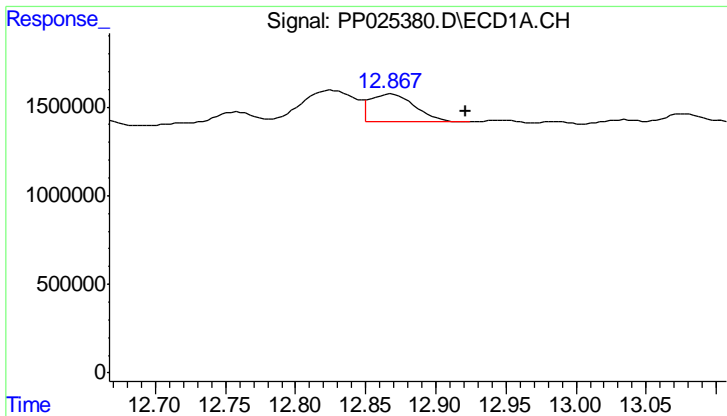
#6 MCPP

R.T.: 12.089 min
 Delta R.T.: 0.024 min
 Response: 24624612
 Conc: 15.46 ug/ml



#6 MCPP

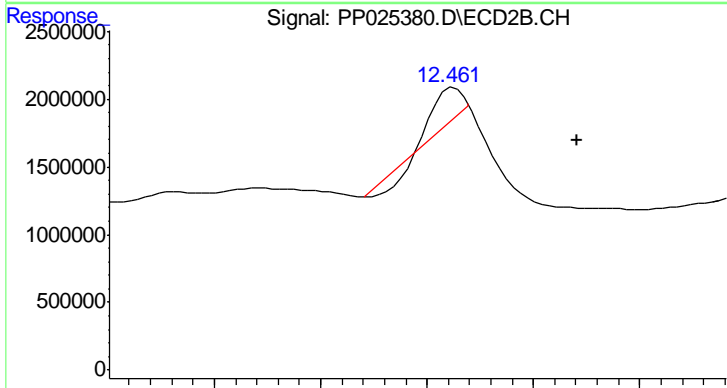
R.T.: 0.000 min
 Exp R.T. : 11.611 min
 Response: 0
 Conc: N.D.



#8 DICHLORPROP

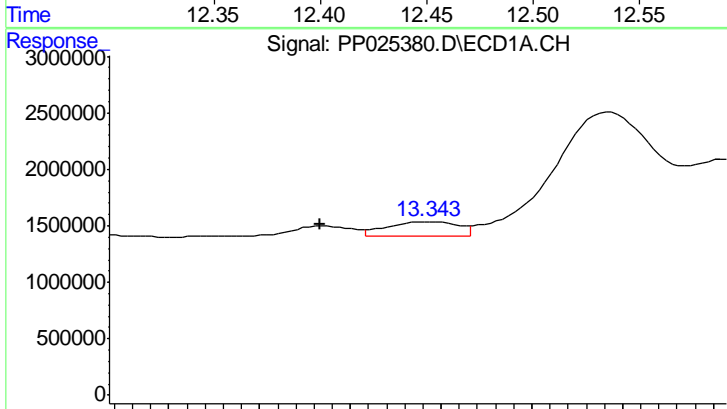
R.T.: 12.868 min
 Delta R.T.: -0.054 min
 Response: 3558041
 Conc: 5.74 ng/ml

Instrument :
 ECD_P
 ClientSampleId :
 CONCRETE-3



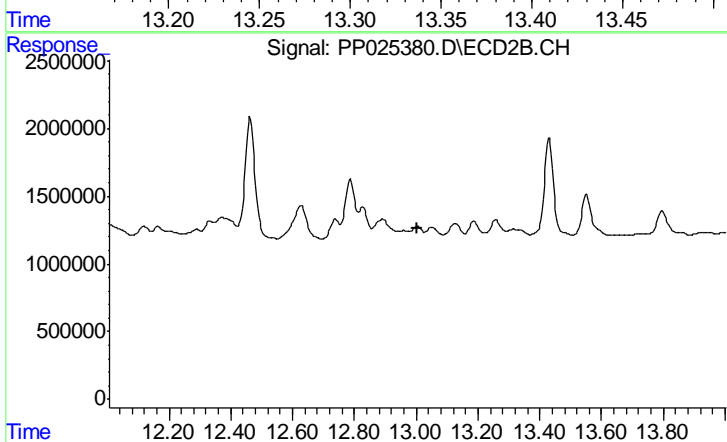
#8 DICHLORPROP

R.T.: 12.463 min
 Delta R.T.: -0.058 min
 Response: 1951280
 Conc: 3.48 ng/ml



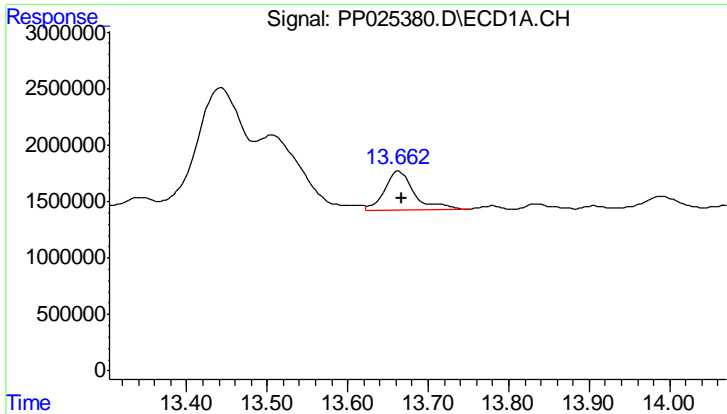
#9 2,4-D

R.T.: 13.343 min
 Delta R.T.: 0.059 min
 Response: 3476588
 Conc: 4.44 ng/ml



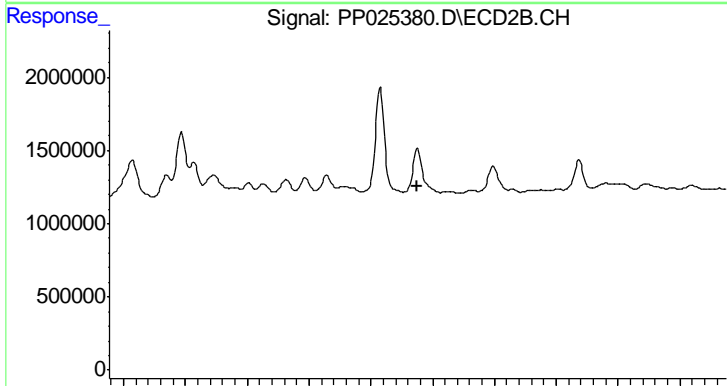
#9 2,4-D

R.T.: 0.000 min
 Exp R.T. : 13.006 min
 Response: 0
 Conc: N.D.

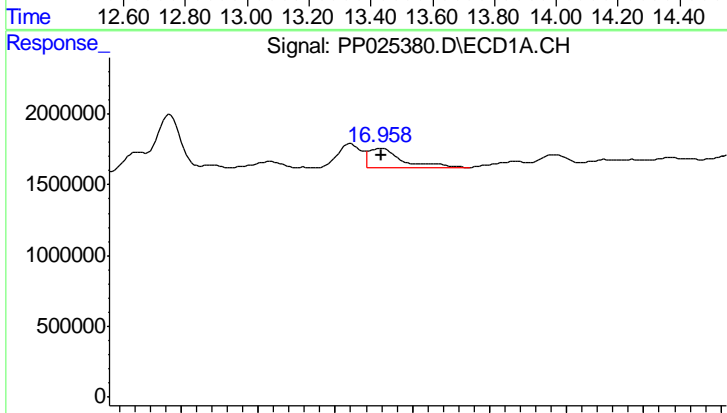


#10 Pentachlorophenol
 R.T.: 13.664 min
 Delta R.T.: -0.003 min
 Response: 8681882
 Conc: 0.88 ng/ml

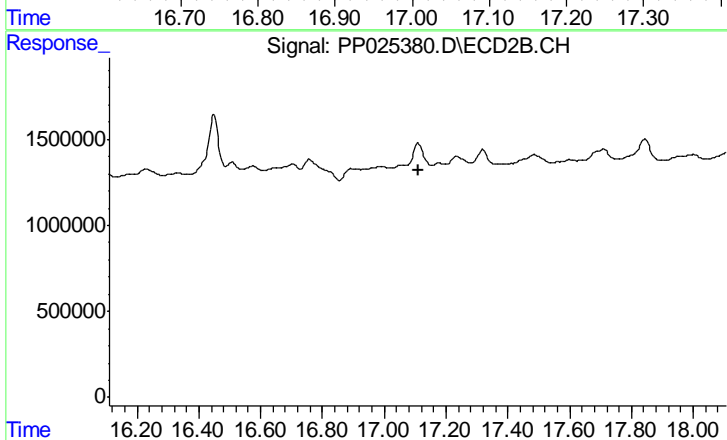
Instrument :
 ECD_P
 ClientSampleId :
 CONCRETE-3



#10 Pentachlorophenol
 R.T.: 0.000 min
 Exp R.T. : 13.552 min
 Response: 0
 Conc: N.D.



#15 Picloram
 R.T.: 16.959 min
 Delta R.T.: -0.002 min
 Response: 4218378
 Conc: 0.72 ng/ml



#15 Picloram
 R.T.: 0.000 min
 Exp R.T. : 17.110 min
 Response: 0
 Conc: N.D.