

Data Path : P:\HPCHEM1\ECD_P\Data\PP043018\
 Data File : PP025362.D
 Signal(s) : Signal #1: ECD1A.CH Signal #2: ECD2B.CH
 Acq On : 30 Apr 2018 14:40
 Operator : UA/AJ
 Sample : HSTDICV750
 Misc :
 ALS Vial : 8 Sample Multiplier: 1

Instrument :
 ECD_P
ClientSampleId :
 ICVPP043018

Manual Integrations
APPROVED
 ugo
 5/1/2018 3:26:58 PM

Integration File signal 1: autoint1.e
 Integration File signal 2: autoint2.e
 Quant Time: May 01 05:55:39 2018
 Quant Method : P:\HPCHEM1\ECD_P\methods\PP043018.M
 Quant Title : 8080.M
 QLast Update : Tue May 01 05:53:49 2018
 Response via : Initial Calibration
 Integrator: ChemStation 6890 Scale Mode: Large solvent peaks clipped

Volume Inj. : 2 µl
 Signal #1 Phase : Rtx-CLPesticides Signal #2 Phase: Rtx-CLPesticides2
 Signal #1 Info : 30M x 0.32mm x0.5 Signal #2 Info : 30M x 0.32mm x 0.25µm

Compound	RT#1	RT#2	Resp#1	Resp#2	ng/ml	ng/ml

System Monitoring Compounds						
4) S 2,4-DCAA	11.414	11.116	428.2E6	455.3E6	748.485	749.354
Target Compounds						
1) T Dalapon	2.905	2.454	543.9E6	549.7E6	680.165	682.414
2) T 3,5-DICHL...	9.821	9.242	597.0E6	561.8E6	698.872	698.710
3) T 4-Nitroph...	10.991	10.276	259.1E6	241.9E6	690.044	682.995
5) T DICAMBA	11.731	11.410	1779.2E6	1629.5E6	715.100	715.286
6) T MCPP	12.070	11.618	116.1E6	104.3E6	72.880m	72.169m
7) T MCPA	12.326	12.010	169.5E6	149.9E6	71.263	70.858
8) T DICHLORPROP	12.922	12.521	436.6E6	396.3E6	703.998	706.174
9) T 2,4-D	13.282	13.005	551.5E6	533.0E6	704.783	707.279
10) T Pentachlo...	13.666	13.552	7047.7E6	6192.1E6	713.027	714.278
11) T 2,4,5-TP ...	14.540	14.156	2989.6E6	2607.5E6	718.405	722.217
12) T 2,4,5-T	14.940	14.780	2772.7E6	2157.7E6	718.269	724.227
13) T 2,4-DB	15.686	15.378	341.8E6	304.3E6	713.934	719.544
14) T DINOSEB	17.154	15.775	1943.8E6	1615.8E6	718.899	721.448
15) T Picloram	16.960	17.109	4297.7E6	3523.5E6	729.279	733.983
16) T DCPA	17.522	16.990	3641.4E6	3077.5E6	729.120	727.220

(f)=RT Delta > 1/2 Window (#)=Amounts differ by > 25% (m)=manual int.

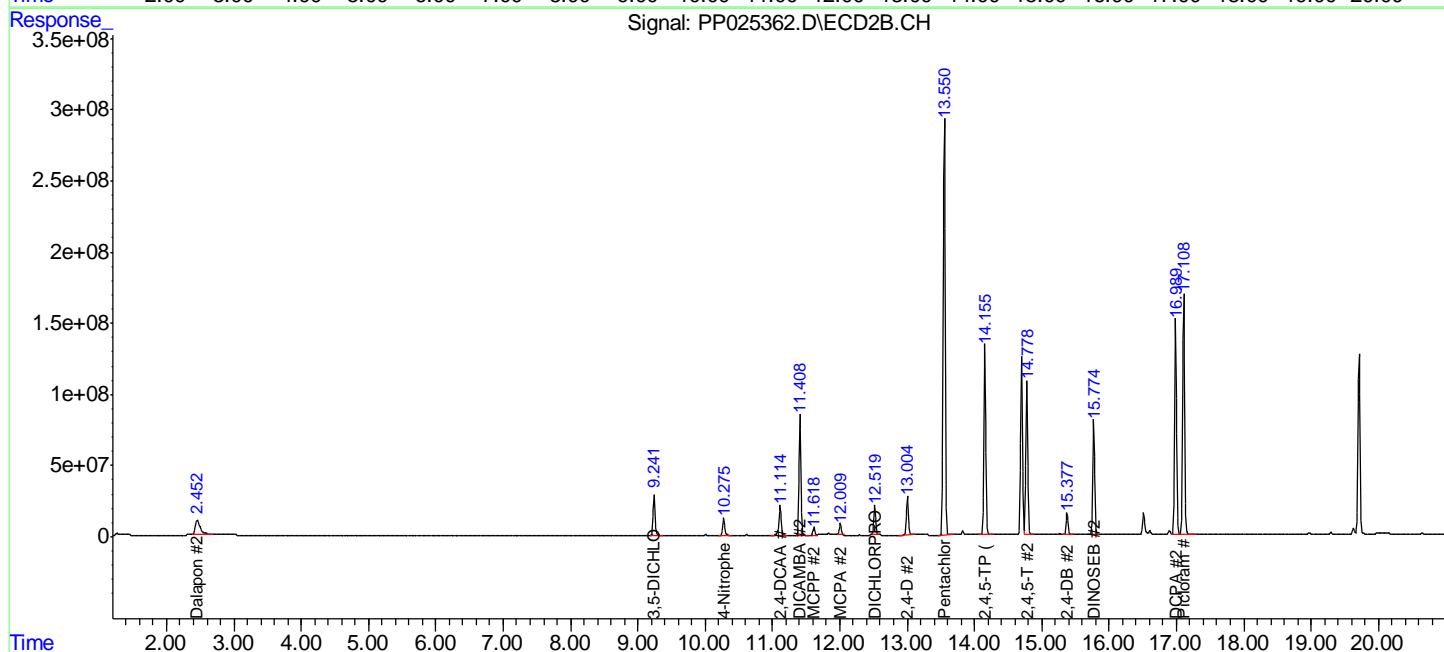
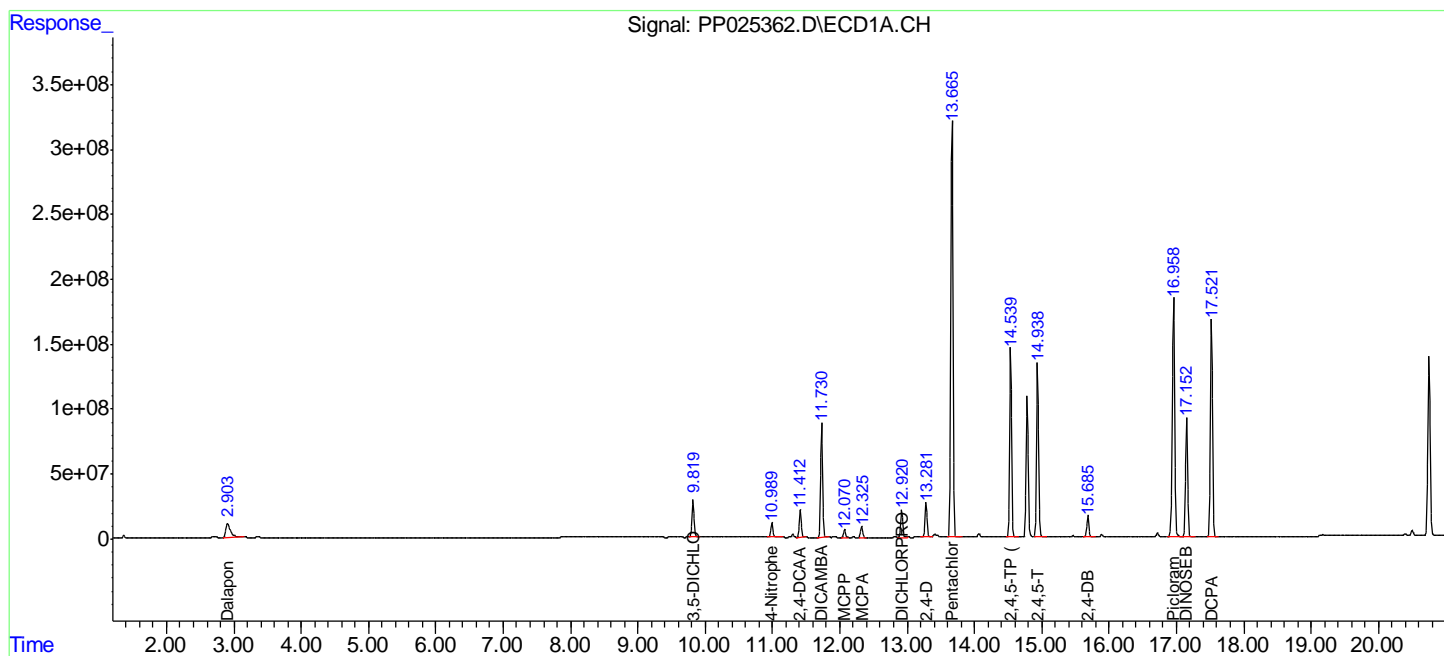
Data Path : P:\HPCHEM1\ECD_P\Data\PP043018\
 Data File : PP025362.D
 Signal(s) : Signal #1: ECD1A.CH Signal #2: ECD2B.CH
 Acq On : 30 Apr 2018 14:40
 Operator : UA/AJ
 Sample : HSTDICV750
 Misc :
 ALS Vial : 8 Sample Multiplier: 1

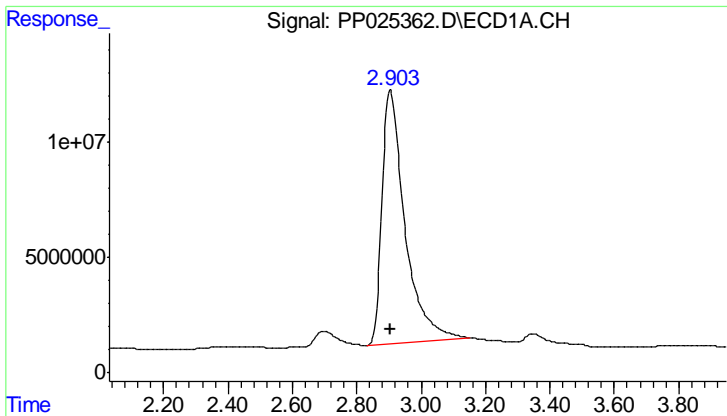
Instrument :
 ECD_P
 Client Sampled :
 ICVPP043018

Manual Integrations
 APPROVED
 ugo
 5/1/2018 3:26:58 PM

Integration File signal 1: autoint1.e
 Integration File signal 2: autoint2.e
 Quant Time: May 01 05:55:39 2018
 Quant Method : P:\HPCHEM1\ECD_P\methods\PP043018.M
 Quant Title : 8080.M
 QLast Update : Tue May 01 05:53:49 2018
 Response via : Initial Calibration
 Integrator: ChemStation 6890 Scale Mode: Large solvent peaks clipped

Volume Inj. : 2 µl
 Signal #1 Phase : Rtx-CLPesticides Signal #2 Phase: Rtx-CLPesticides2
 Signal #1 Info : 30M x 0.32mm x0.5 Signal #2 Info : 30M x 0.32mm x 0.25µm





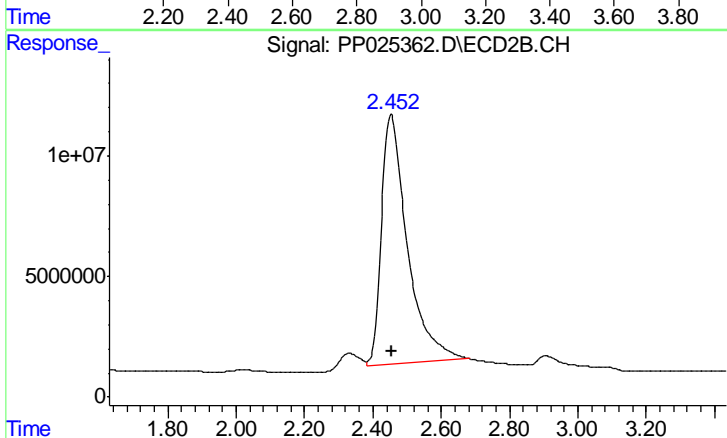
#1 Dalapon

R.T.: 2.905 min
 Delta R.T.: 0.001 min
 Response: 543864820
 Conc: 680.17 ng/ml

Instrument :
 ECD_P
 ClientSampleId :
 ICVPP043018

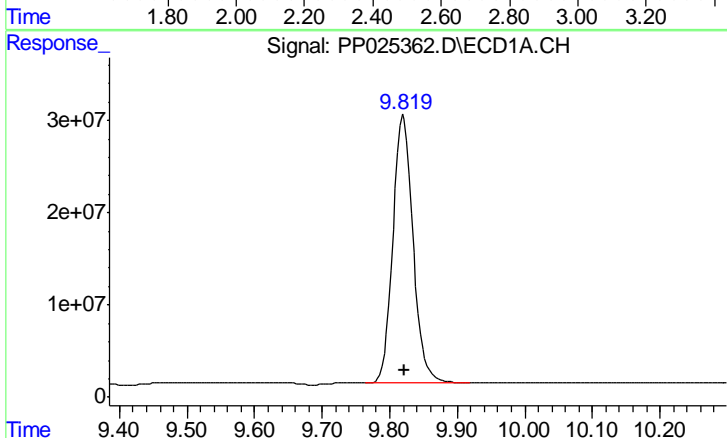
Manual Integrations
 APPROVED

ugo
 5/1/2018 3:26:58 PM



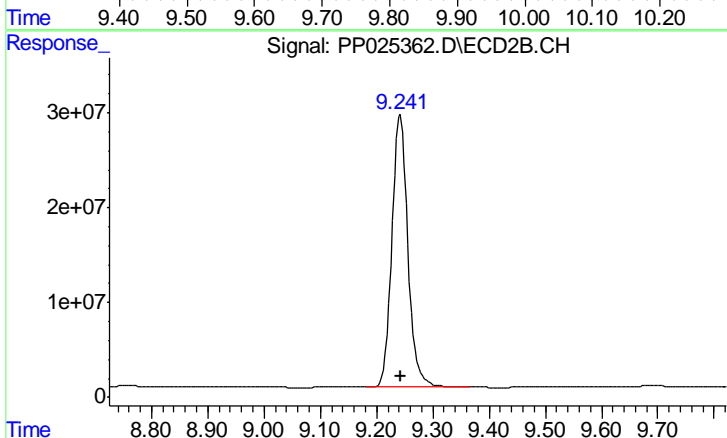
#1 Dalapon

R.T.: 2.454 min
 Delta R.T.: 0.000 min
 Response: 549696902
 Conc: 682.41 ng/ml



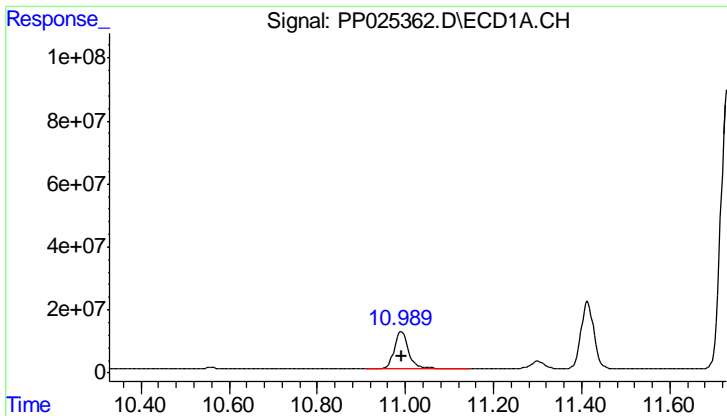
#2 3,5-DICHLOROBENZOIC ACID

R.T.: 9.821 min
 Delta R.T.: 0.000 min
 Response: 596981941
 Conc: 698.87 ng/ml



#2 3,5-DICHLOROBENZOIC ACID

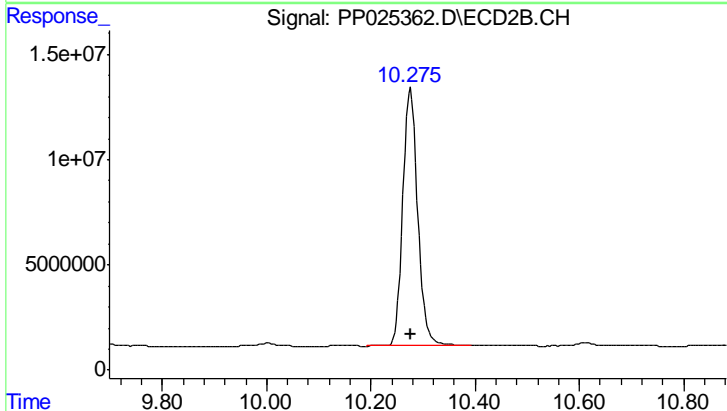
R.T.: 9.242 min
 Delta R.T.: 0.000 min
 Response: 561839722
 Conc: 698.71 ng/ml



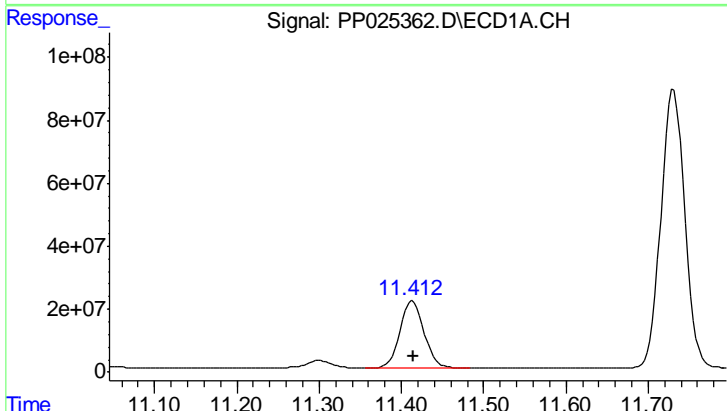
#3 4-Nitrophenol
 R.T.: 10.991 min
 Delta R.T.: 0.000 min
 Response: 259057226
 Conc: 690.04 ng/ml

Instrument :
 ECD_P
ClientSampled :
 ICVPP043018

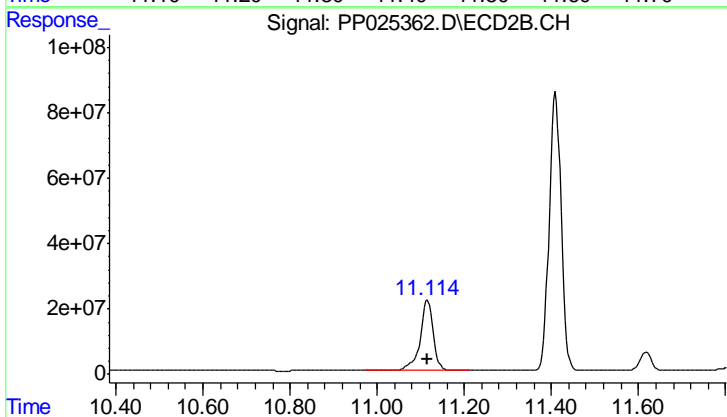
Manual Integrations
APPROVED
 ugo
 5/1/2018 3:26:58 PM



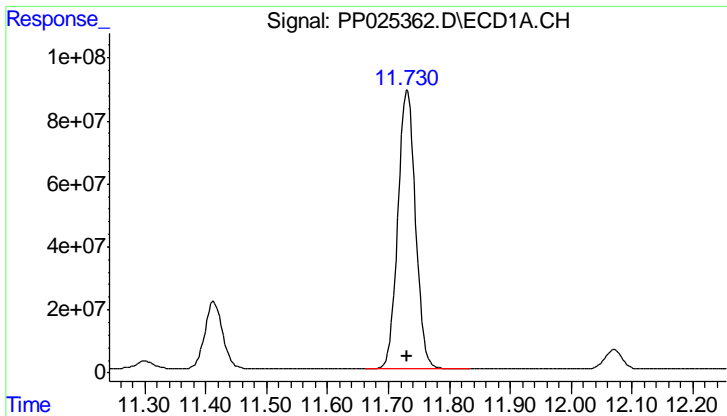
#3 4-Nitrophenol
 R.T.: 10.276 min
 Delta R.T.: 0.000 min
 Response: 241863600
 Conc: 683.00 ng/ml



#4 2,4-DCAA
 R.T.: 11.414 min
 Delta R.T.: 0.000 min
 Response: 428232044
 Conc: 748.48 ng/ml



#4 2,4-DCAA
 R.T.: 11.116 min
 Delta R.T.: 0.000 min
 Response: 455325339
 Conc: 749.35 ng/ml

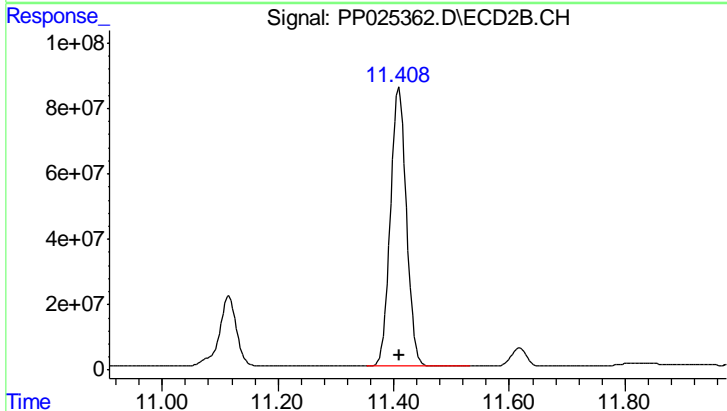


#5 DICAMBA

R.T.: 11.731 min
 Delta R.T.: 0.000 min
 Response: 1779216862
 Conc: 715.10 ng/ml

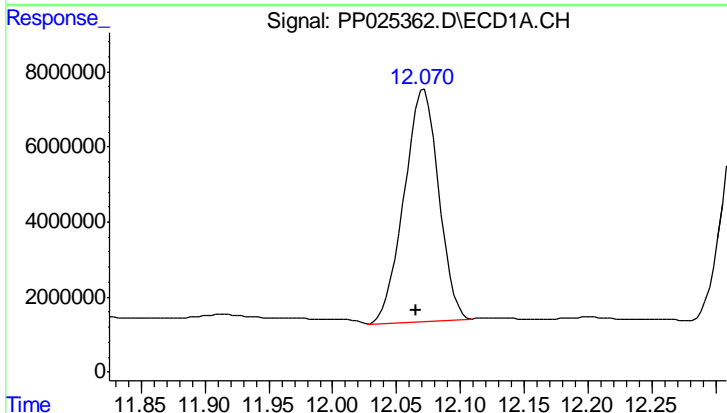
Instrument :
 ECD_P
 ClientSampled :
 ICVPP043018

Manual Integrations
 APPROVED
 ugo
 5/1/2018 3:26:58 PM



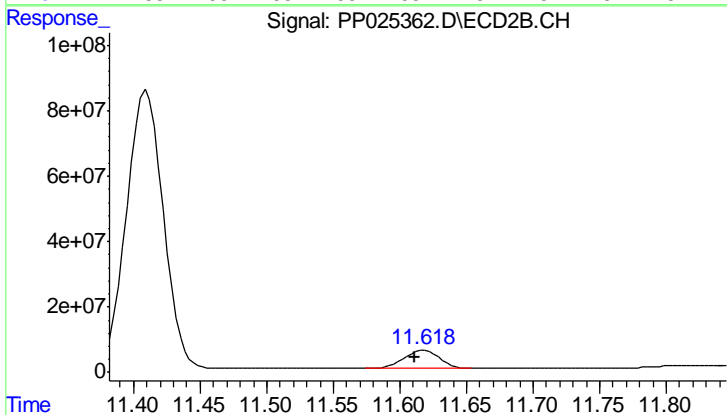
#5 DICAMBA

R.T.: 11.410 min
 Delta R.T.: 0.000 min
 Response: 1629498909
 Conc: 715.29 ng/ml



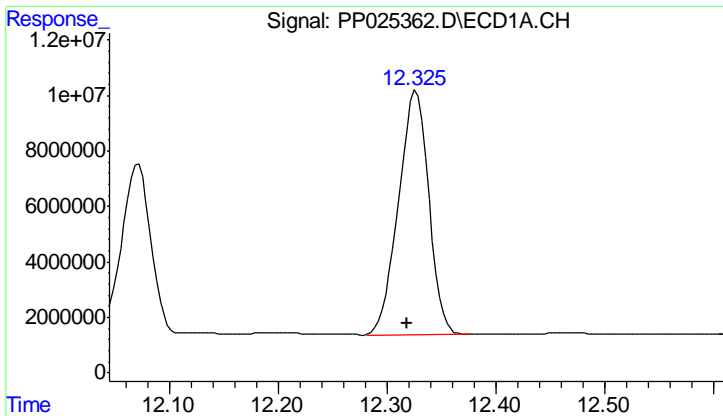
#6 MCPP

R.T.: 12.070 min
 Delta R.T.: 0.005 min
 Response: 116072182
 Conc: 72.88 ug/ml m



#6 MCPP

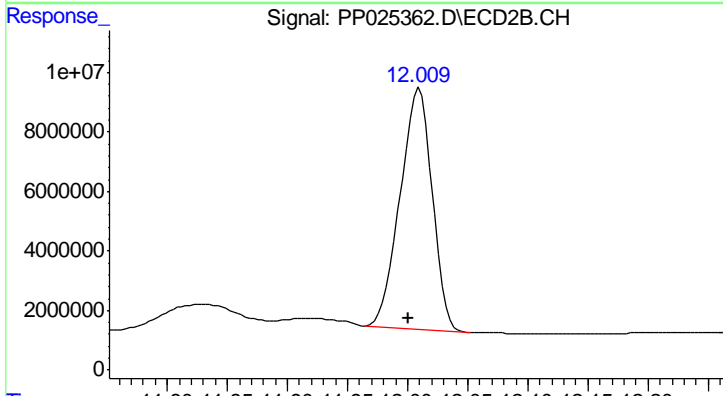
R.T.: 11.618 min
 Delta R.T.: 0.007 min
 Response: 104331441
 Conc: 72.17 ug/ml m



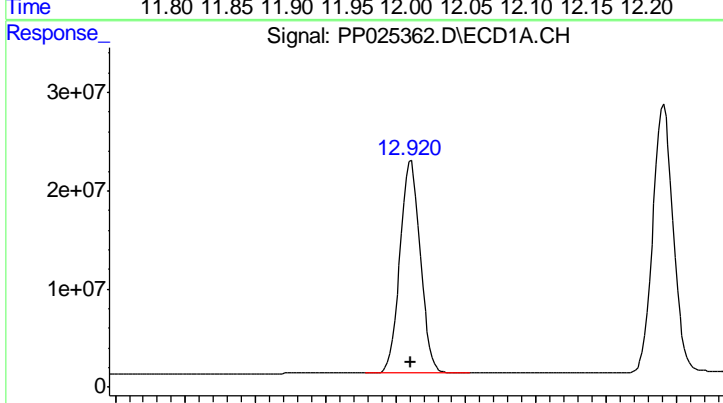
#7 MCPA
 R.T.: 12.326 min
 Delta R.T.: 0.007 min
 Response: 169476700
 Conc: 71.26 ug/ml

Instrument :
 ECD_P
ClientSampleId :
 ICVPP043018

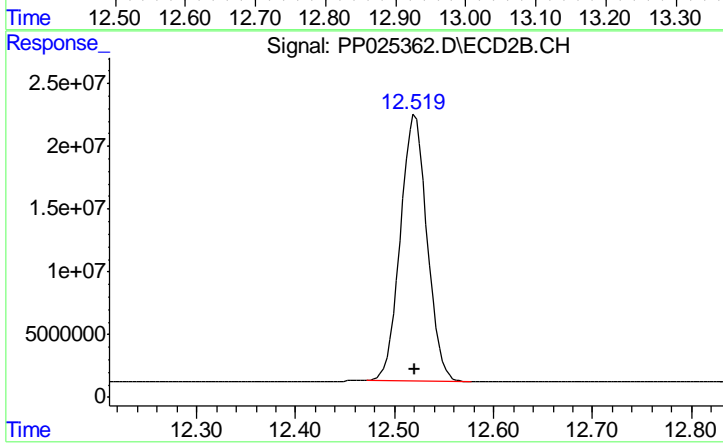
Manual Integrations
APPROVED
 ugo
 5/1/2018 3:26:58 PM



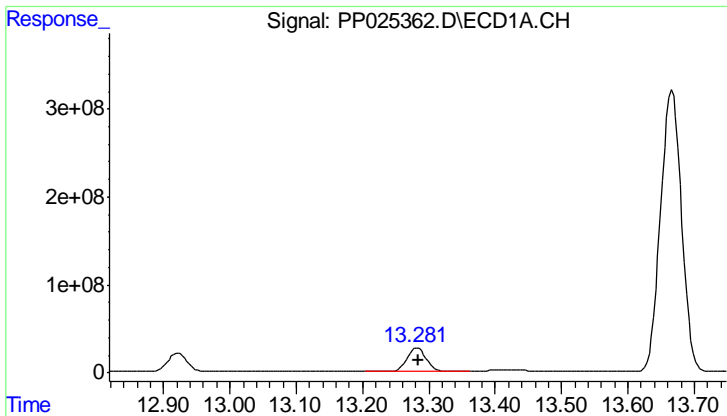
#7 MCPA
 R.T.: 12.010 min
 Delta R.T.: 0.010 min
 Response: 149902110
 Conc: 70.86 ug/ml



#8 DICHLORPROP
 R.T.: 12.922 min
 Delta R.T.: 0.000 min
 Response: 436565786
 Conc: 704.00 ng/ml



#8 DICHLORPROP
 R.T.: 12.521 min
 Delta R.T.: 0.000 min
 Response: 396280408
 Conc: 706.17 ng/ml



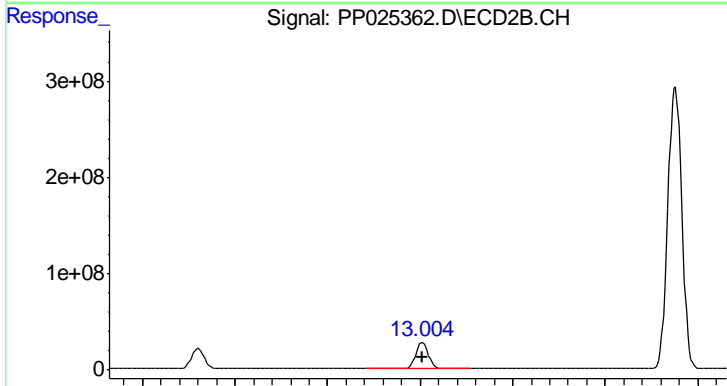
#9 2,4-D

R.T.: 13.282 min
 Delta R.T.: 0.000 min
 Response: 551527878
 Conc: 704.78 ng/ml

Instrument :
 ECD_P
 ClientSampleId :
 ICVPP043018

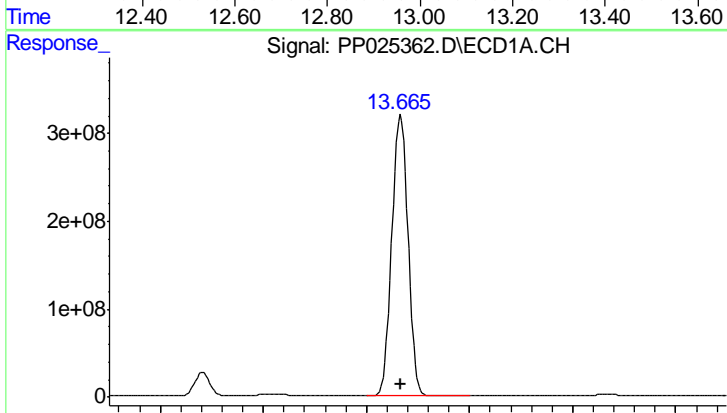
Manual Integrations
 APPROVED

ugo
 5/1/2018 3:26:58 PM



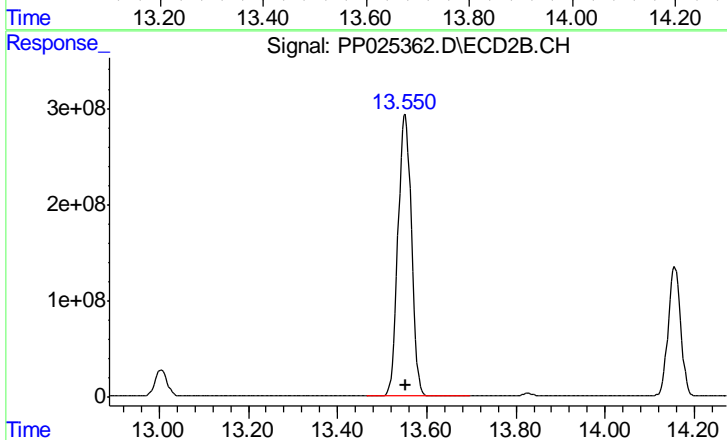
#9 2,4-D

R.T.: 13.005 min
 Delta R.T.: 0.000 min
 Response: 533041554
 Conc: 707.28 ng/ml



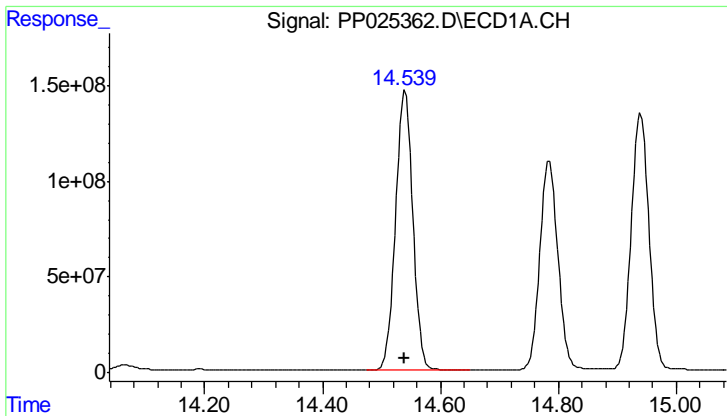
#10 Pentachlorophenol

R.T.: 13.666 min
 Delta R.T.: 0.000 min
 Response: 7047676835
 Conc: 713.03 ng/ml



#10 Pentachlorophenol

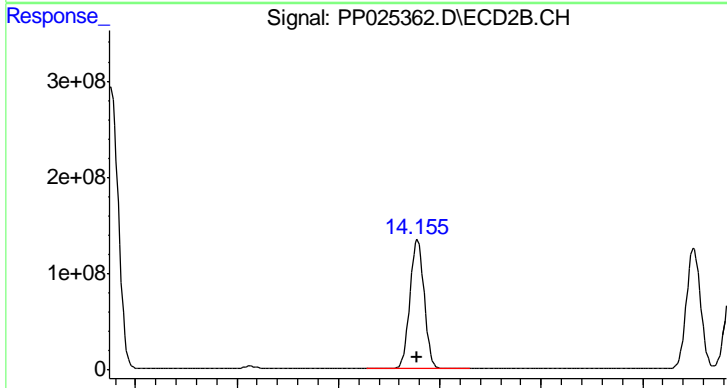
R.T.: 13.552 min
 Delta R.T.: 0.000 min
 Response: 6192093895
 Conc: 714.28 ng/ml



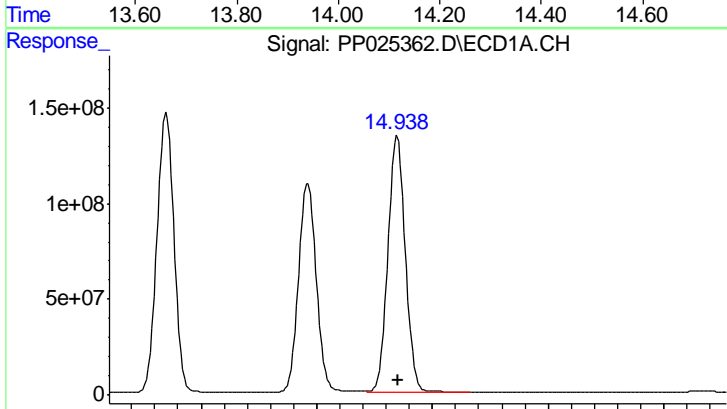
#11 2,4,5-TP (SILVEX)
 R.T.: 14.540 min
 Delta R.T.: 0.000 min
 Response: 2989581382
 Conc: 718.41 ng/ml

Instrument :
 ECD_P
 ClientSampleId :
 ICVPP043018

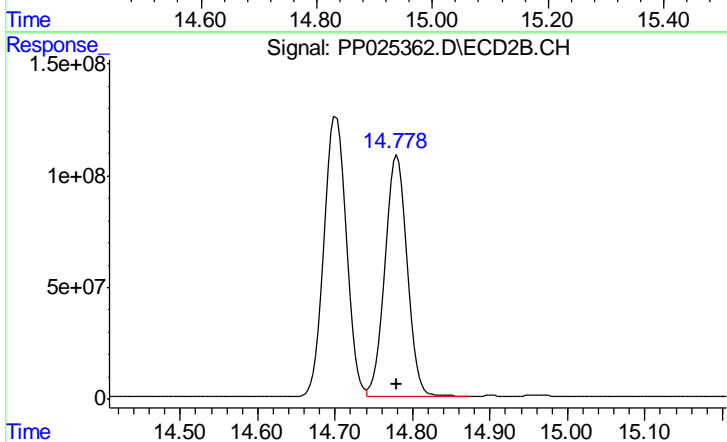
Manual Integrations
 APPROVED
 ugo
 5/1/2018 3:26:58 PM



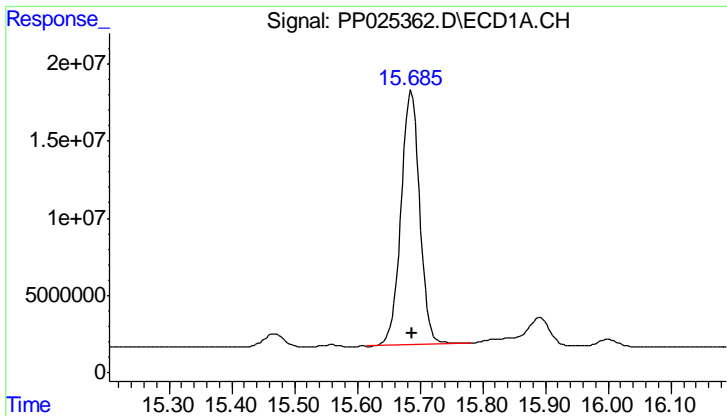
#11 2,4,5-TP (SILVEX)
 R.T.: 14.156 min
 Delta R.T.: 0.000 min
 Response: 2607474788
 Conc: 722.22 ng/ml



#12 2,4,5-T
 R.T.: 14.940 min
 Delta R.T.: 0.000 min
 Response: 2772672043
 Conc: 718.27 ng/ml



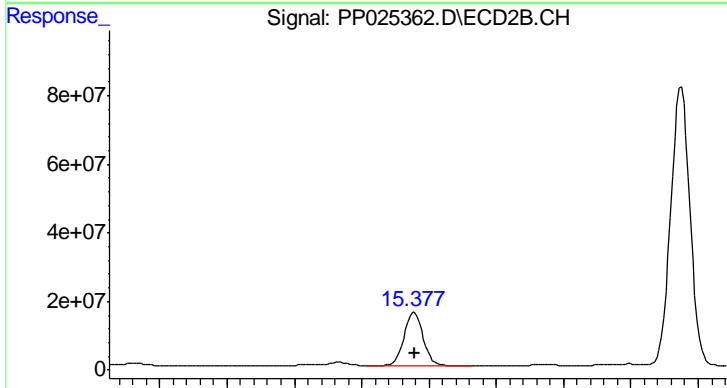
#12 2,4,5-T
 R.T.: 14.780 min
 Delta R.T.: 0.000 min
 Response: 2157733312
 Conc: 724.23 ng/ml



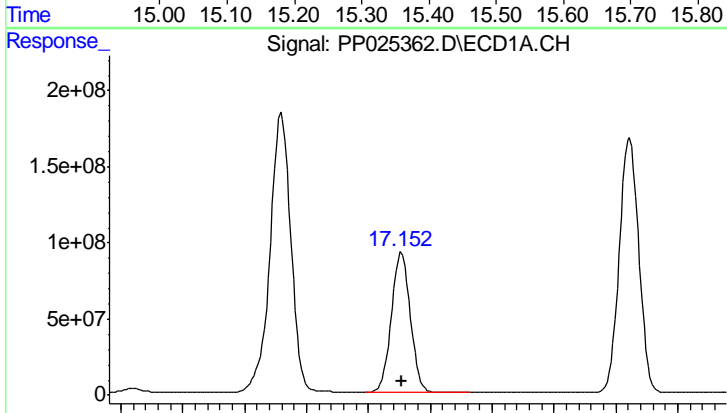
#13 2,4-DB
 R.T.: 15.686 min
 Delta R.T.: 0.000 min
 Response: 341797161
 Conc: 713.93 ng/ml

Instrument :
 ECD_P
 ClientSampleId :
 ICVPP043018

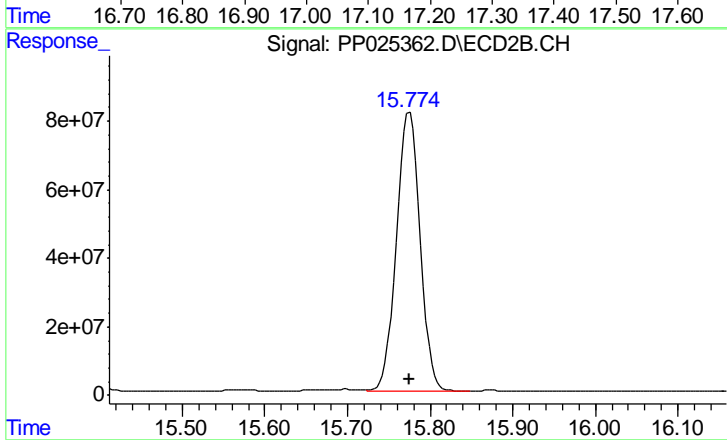
Manual Integrations
 APPROVED
 ugo
 5/1/2018 3:26:58 PM



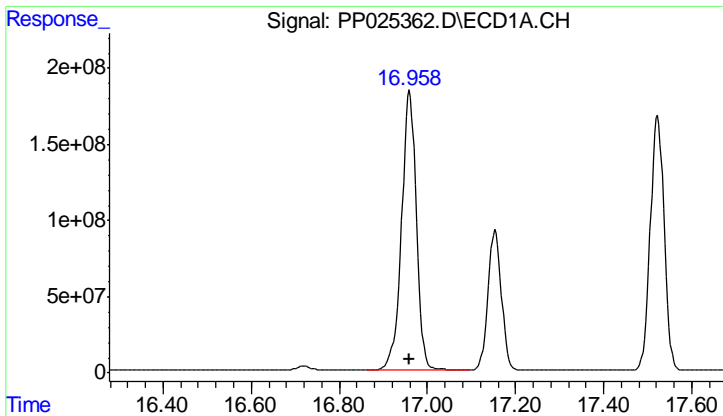
#13 2,4-DB
 R.T.: 15.378 min
 Delta R.T.: -0.001 min
 Response: 304265335
 Conc: 719.54 ng/ml



#14 DINOSEB
 R.T.: 17.154 min
 Delta R.T.: 0.000 min
 Response: 1943826418
 Conc: 718.90 ng/ml



#14 DINOSEB
 R.T.: 15.775 min
 Delta R.T.: 0.000 min
 Response: 1615800066
 Conc: 721.45 ng/ml



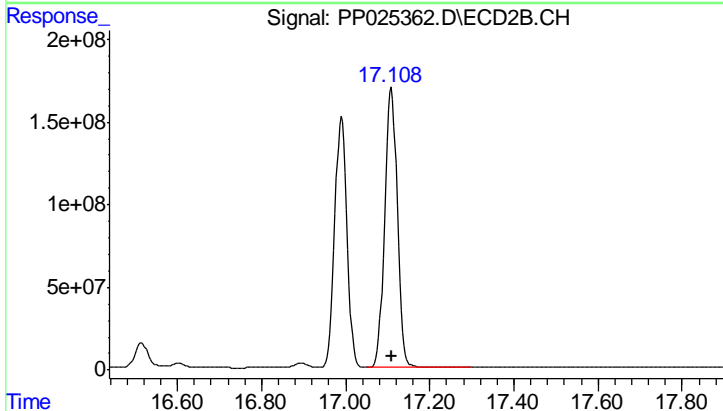
#15 Picloram

R.T.: 16.960 min
 Delta R.T.: 0.000 min
 Response: 4297650291
 Conc: 729.28 ng/ml

Instrument :
 ECD_P
 ClientSampleId :
 ICVPP043018

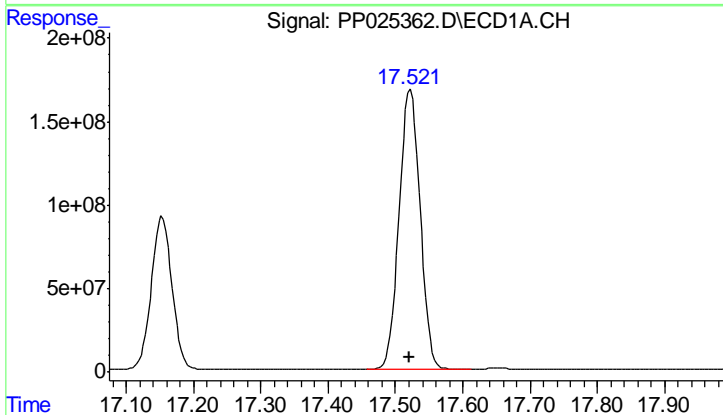
Manual Integrations
 APPROVED

ugo
 5/1/2018 3:26:58 PM



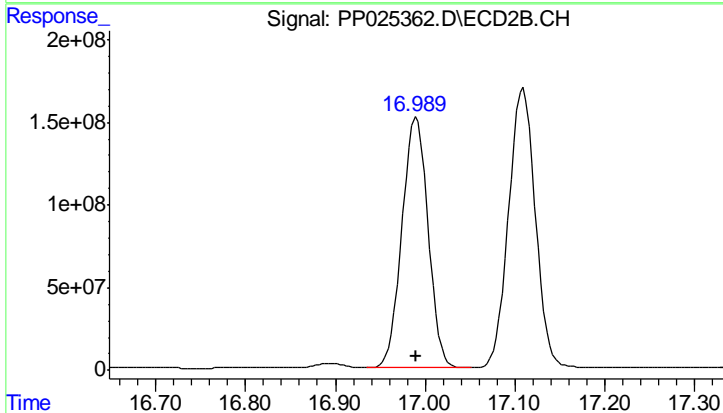
#15 Picloram

R.T.: 17.109 min
 Delta R.T.: 0.000 min
 Response: 3523522394
 Conc: 733.98 ng/ml



#16 DCPA

R.T.: 17.522 min
 Delta R.T.: 0.000 min
 Response: 3641396382
 Conc: 729.12 ng/ml



#16 DCPA

R.T.: 16.990 min
 Delta R.T.: 0.000 min
 Response: 3077548178
 Conc: 727.22 ng/ml