

Data Path : Z:\pestpcbsrv\HPCHEM1\ECD_P\Data\PP043024\
 Data File : PP064607.D
 Signal(s) : Signal #1: ECD1A.ch Signal #2: ECD2B.ch
 Acq On : 30 Apr 2024 18:41
 Operator : YP\AJ
 Sample : AR1242ICV500
 Misc :
 ALS Vial : 28 Sample Multiplier: 1

Instrument :
 ECD_P
ClientSampleId :
 ICVPP043024AR1242

Integration File signal 1: autoint1.e
 Integration File signal 2: autoint2.e
 Quant Time: May 01 01:20:56 2024
 Quant Method : Z:\pestpcbsrv\HPCHEM1\ECD_P\methods\PP043024.M
 Quant Title : GC EXTRACTABLES
 QLast Update : Wed May 01 01:18:27 2024
 Response via : Initial Calibration
 Integrator: ChemStation

Volume Inj. : 2 µl
 Signal #1 Phase : ZB-MR1 Signal #2 Phase: ZB-MR2
 Signal #1 Info : 30Mx0.32mmx 0.50µ Signal #2 Info : 30M x 0.32mm x 0.25µm

Compound	RT#1	RT#2	Resp#1	Resp#2	ng/ml	ng/ml

System Monitoring Compounds						
1) SA Tetrachlo...	4.371	3.441	79122239	116.7E6	50.910	52.940
2) SA Decachlor...	10.080	8.361	43982794	90715146	51.799	51.252
Target Compounds						
16) L4 AR-1242-1	5.541	4.511	18946866	27809360	502.940	524.439
17) L4 AR-1242-2	5.563	4.529	29368540	40836978	515.679	524.417
18) L4 AR-1242-3	5.625	4.702	19663902	22589993	509.531	524.276
19) L4 AR-1242-4	5.724	4.785	15591792	23994240	512.871	524.950
20) L4 AR-1242-5	6.461	5.301	15383896	25628958	531.231	518.553

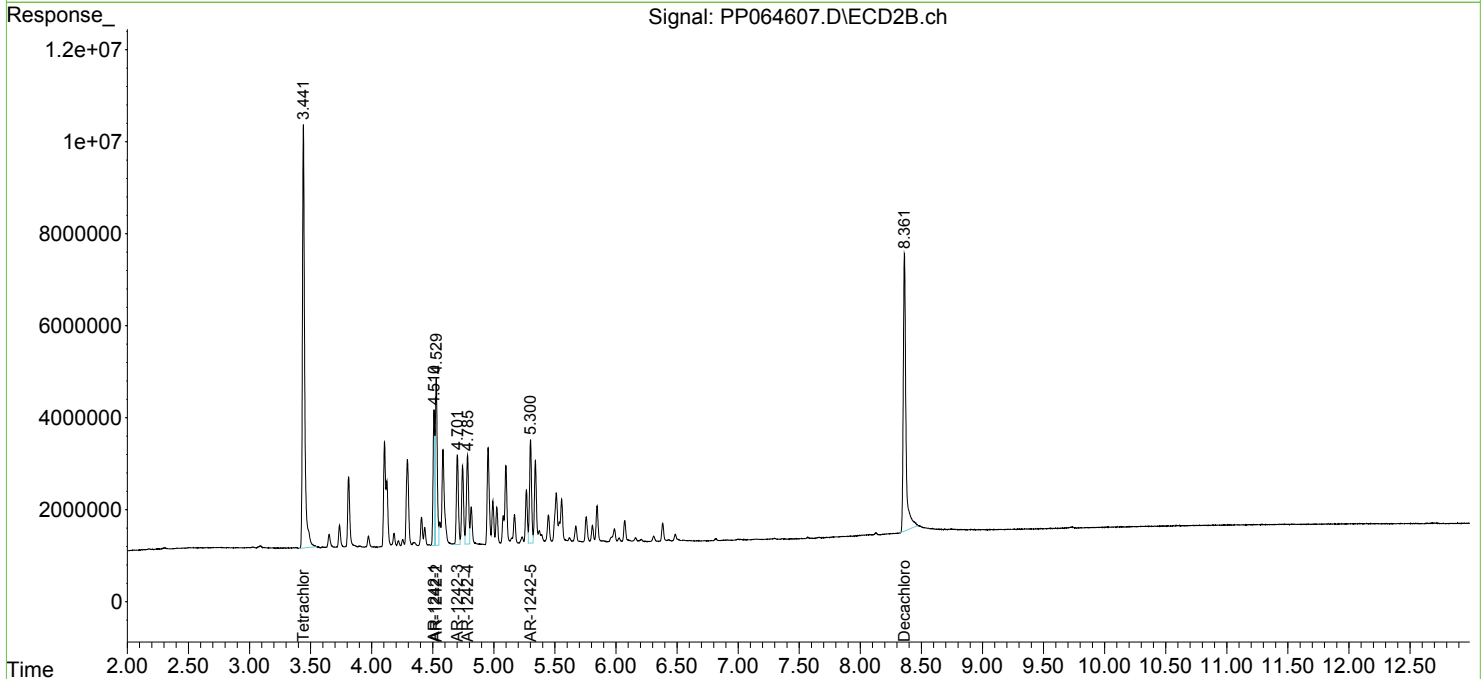
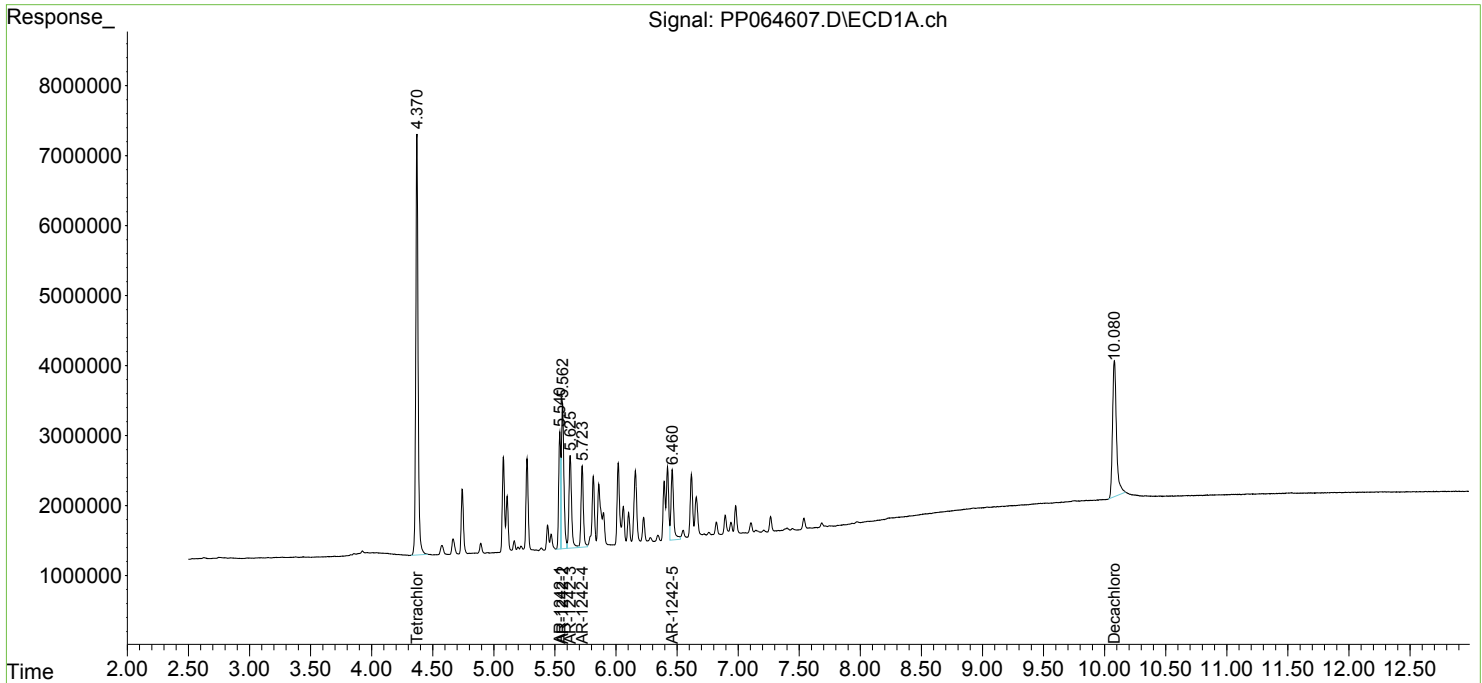
(f)=RT Delta > 1/2 Window (#)=Amounts differ by > 25% (m)=manual int.

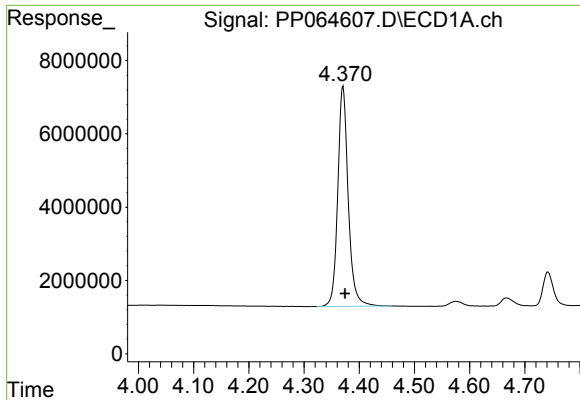
Data Path : Z:\pestpcbsrv\HPCHEM1\ECD_P\Data\PP043024\
 Data File : PP064607.D
 Signal(s) : Signal #1: ECD1A.ch Signal #2: ECD2B.ch
 Acq On : 30 Apr 2024 18:41
 Operator : YP\AJ
 Sample : AR1242ICV500
 Misc :
 ALS Vial : 28 Sample Multiplier: 1

Instrument :
 ECD_P
 ClientSampleId :
 ICVPP043024AR1242

Integration File signal 1: autoint1.e
 Integration File signal 2: autoint2.e
 Quant Time: May 01 01:20:56 2024
 Quant Method : Z:\pestpcbsrv\HPCHEM1\ECD_P\methods\PP043024.M
 Quant Title : GC EXTRACTABLES
 QLast Update : Wed May 01 01:18:27 2024
 Response via : Initial Calibration
 Integrator: ChemStation

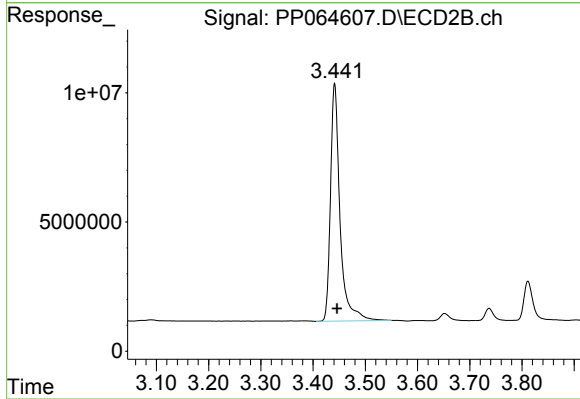
Volume Inj. : 2 µl
 Signal #1 Phase : ZB-MR1 Signal #2 Phase: ZB-MR2
 Signal #1 Info : 30Mx0.32mmx 0.50µ Signal #2 Info : 30M x 0.32mm x 0.25µm



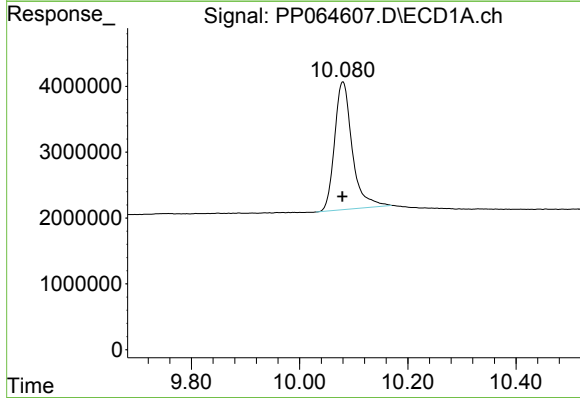


#1 Tetrachloro-m-xylene
 R.T.: 4.371 min
 Delta R.T.: -0.003 min
 Response: 79122239
 Conc: 50.91 ng/ml

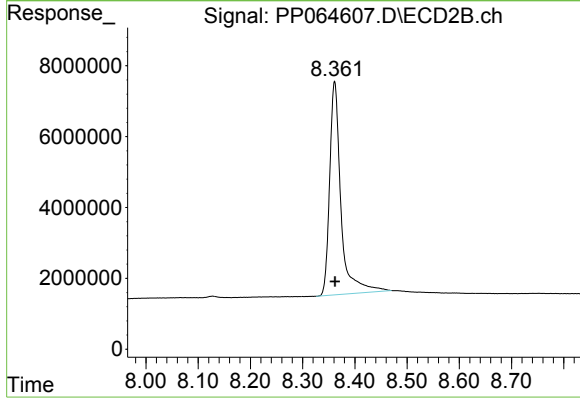
Instrument :
 ECD_P
 ClientSampleId :
 ICVPP043024AR1242



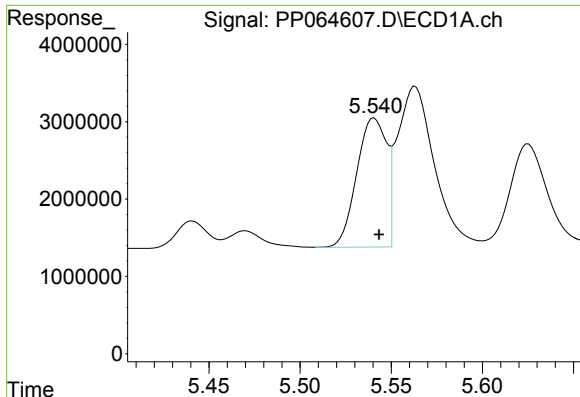
#1 Tetrachloro-m-xylene
 R.T.: 3.441 min
 Delta R.T.: -0.005 min
 Response: 116679103
 Conc: 52.94 ng/ml



#2 Decachlorobiphenyl
 R.T.: 10.080 min
 Delta R.T.: 0.000 min
 Response: 43982794
 Conc: 51.80 ng/ml



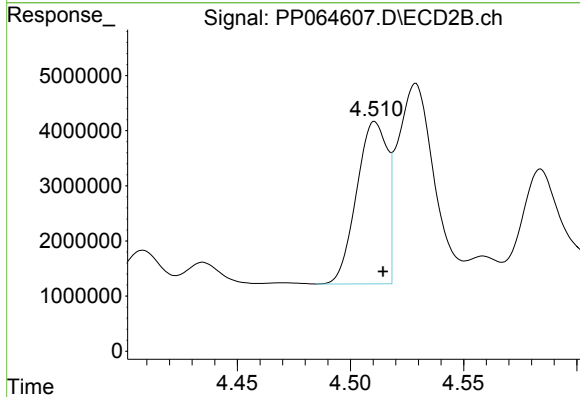
#2 Decachlorobiphenyl
 R.T.: 8.361 min
 Delta R.T.: -0.001 min
 Response: 90715146
 Conc: 51.25 ng/ml



#16 AR-1242-1

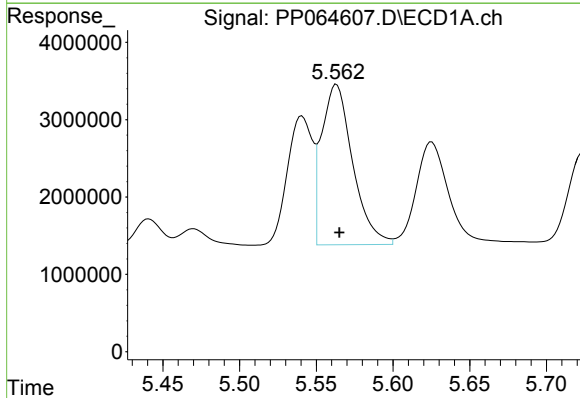
R.T.: 5.541 min
 Delta R.T.: -0.002 min
 Response: 18946866
 Conc: 502.94 ng/ml

Instrument :
 ECD_P
 ClientSampleId :
 ICVPP043024AR1242



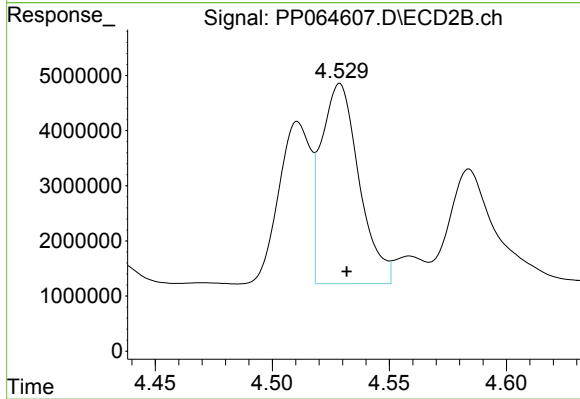
#16 AR-1242-1

R.T.: 4.511 min
 Delta R.T.: -0.004 min
 Response: 27809360
 Conc: 524.44 ng/ml



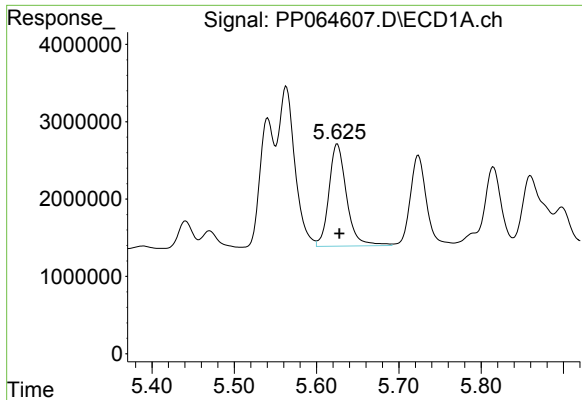
#17 AR-1242-2

R.T.: 5.563 min
 Delta R.T.: -0.002 min
 Response: 29368540
 Conc: 515.68 ng/ml



#17 AR-1242-2

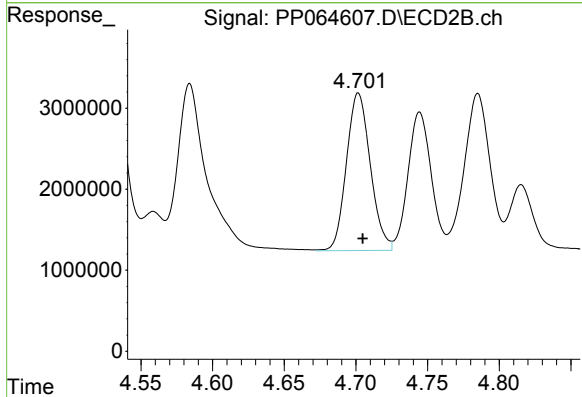
R.T.: 4.529 min
 Delta R.T.: -0.003 min
 Response: 40836978
 Conc: 524.42 ng/ml



#18 AR-1242-3

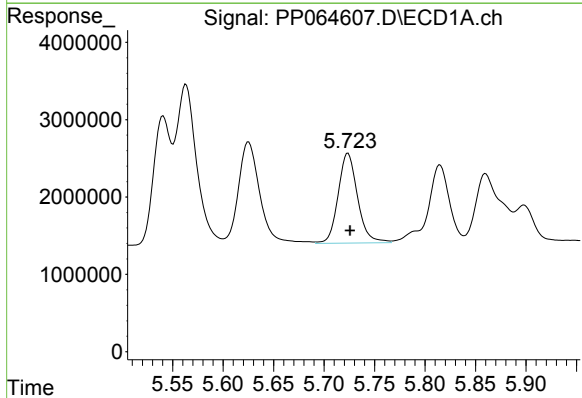
R.T.: 5.625 min
Delta R.T.: -0.003 min
Response: 19663902
Conc: 509.53 ng/ml

Instrument :
ECD_P
ClientSampleId :
ICVPP043024AR1242



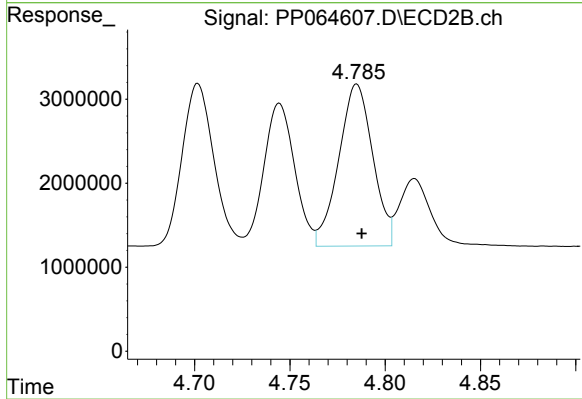
#18 AR-1242-3

R.T.: 4.702 min
Delta R.T.: -0.003 min
Response: 22589993
Conc: 524.28 ng/ml



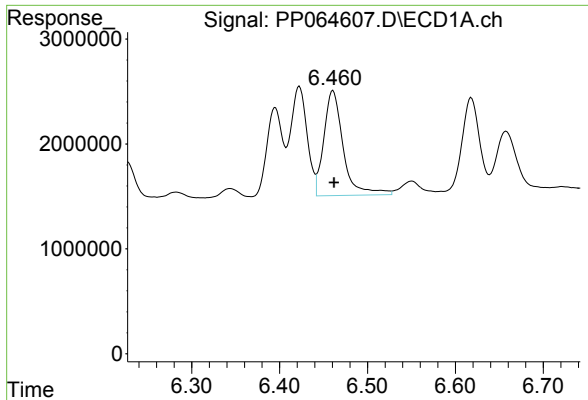
#19 AR-1242-4

R.T.: 5.724 min
Delta R.T.: -0.002 min
Response: 15591792
Conc: 512.87 ng/ml



#19 AR-1242-4

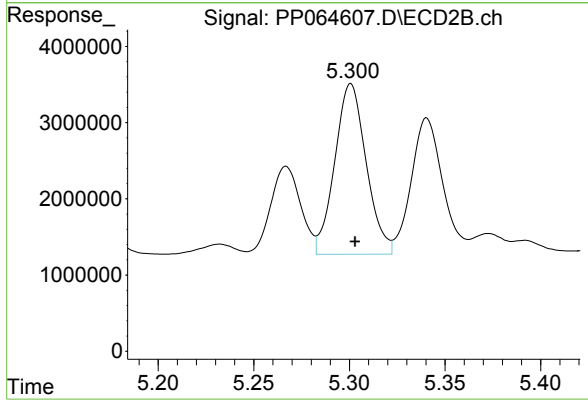
R.T.: 4.785 min
Delta R.T.: -0.003 min
Response: 23994240
Conc: 524.95 ng/ml



#20 AR-1242-5

R.T.: 6.461 min
 Delta R.T.: -0.001 min
 Response: 15383896
 Conc: 531.23 ng/ml

Instrument :
 ECD_P
 ClientSampleId :
 ICVPP043024AR1242



#20 AR-1242-5

R.T.: 5.301 min
 Delta R.T.: -0.002 min
 Response: 25628958
 Conc: 518.55 ng/ml