

Data Path : Z:\pestpcbsrv\HPCHEM1\ECD_P\Data\PP050123\
 Data File : PP057331.D
 Signal(s) : Signal #1: ECD1A.ch Signal #2: ECD2B.ch
 Acq On : 01 May 2023 17:11
 Operator : YP\AJ
 Sample : AR1268ICC1000
 Misc :
 ALS Vial : 26 Sample Multiplier: 1

Instrument :
 ECD_P
ClientSampleId :
 AR1268ICC1000

Integration File signal 1: autoint1.e
 Integration File signal 2: autoint2.e
 Quant Time: May 01 18:03:47 2023
 Quant Method : Z:\pestpcbsrv\HPCHEM1\ECD_P\methods\PP050123.M
 Quant Title : GC EXTRACTABLES
 QLast Update : Mon May 01 18:03:10 2023
 Response via : Initial Calibration
 Integrator: ChemStation

Volume Inj. : 2 µl
 Signal #1 Phase : ZB-MR1 Signal #2 Phase: ZB-MR2
 Signal #1 Info : 30Mx0.32mmx 0.50µ Signal #2 Info : 30M x 0.32mm x 0.25µm

Compound	RT#1	RT#2	Resp#1	Resp#2	ng/ml	ng/ml

System Monitoring Compounds						
1) SA Tetrachlo...	4.415	3.642	230.8E6	173.4E6	97.819	98.447
2) SA Decachlor...	10.261	8.715	260.3E6	311.3E6	96.671	96.152
Target Compounds						
41) L9 AR-1268-1	8.705	7.590	208.3E6	274.4E6	976.177	966.254
42) L9 AR-1268-2	8.803	7.654	160.9E6	245.2E6	987.457	967.572
43) L9 AR-1268-3	9.037	7.863	182.1E6	222.1E6	968.308	960.477
44) L9 AR-1268-4	9.475	8.153	53348120	76592267	1027.864	945.091
45) L9 AR-1268-5	9.907	8.452	507.6E6	609.9E6	995.703	997.891

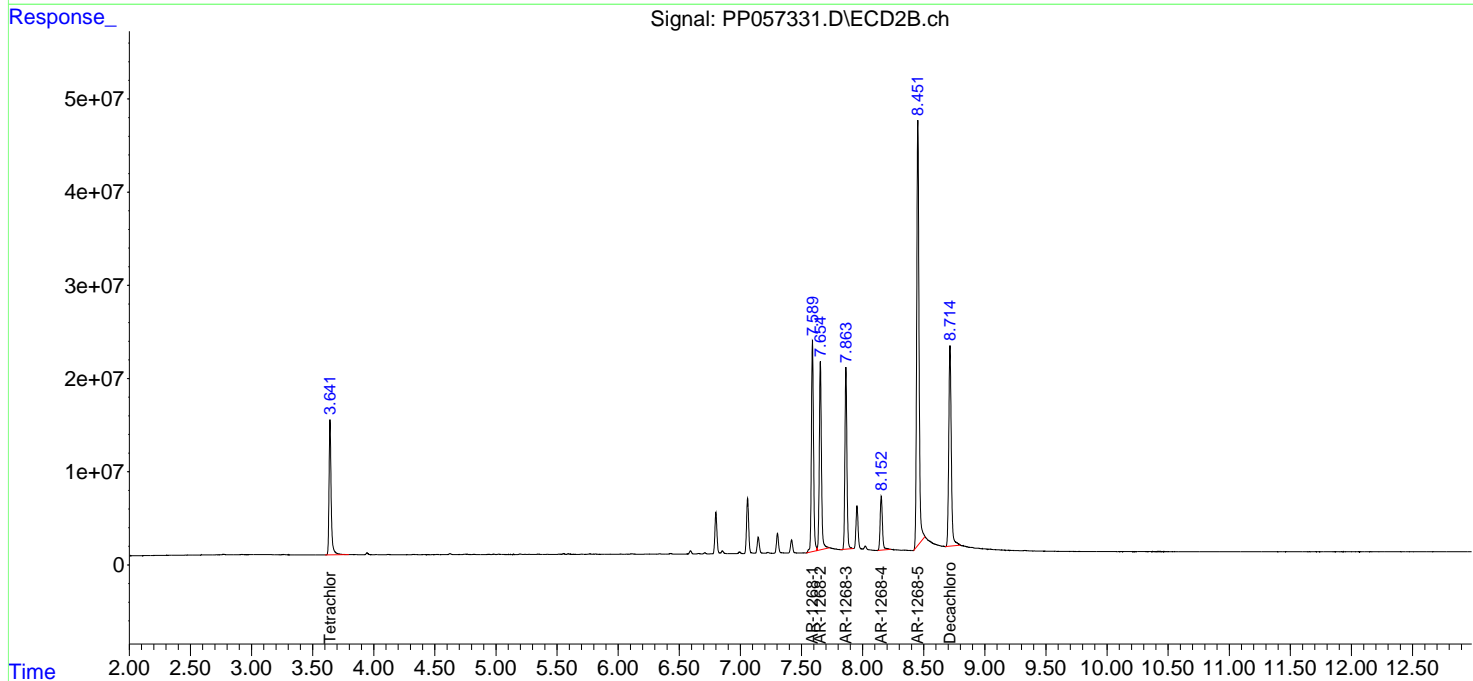
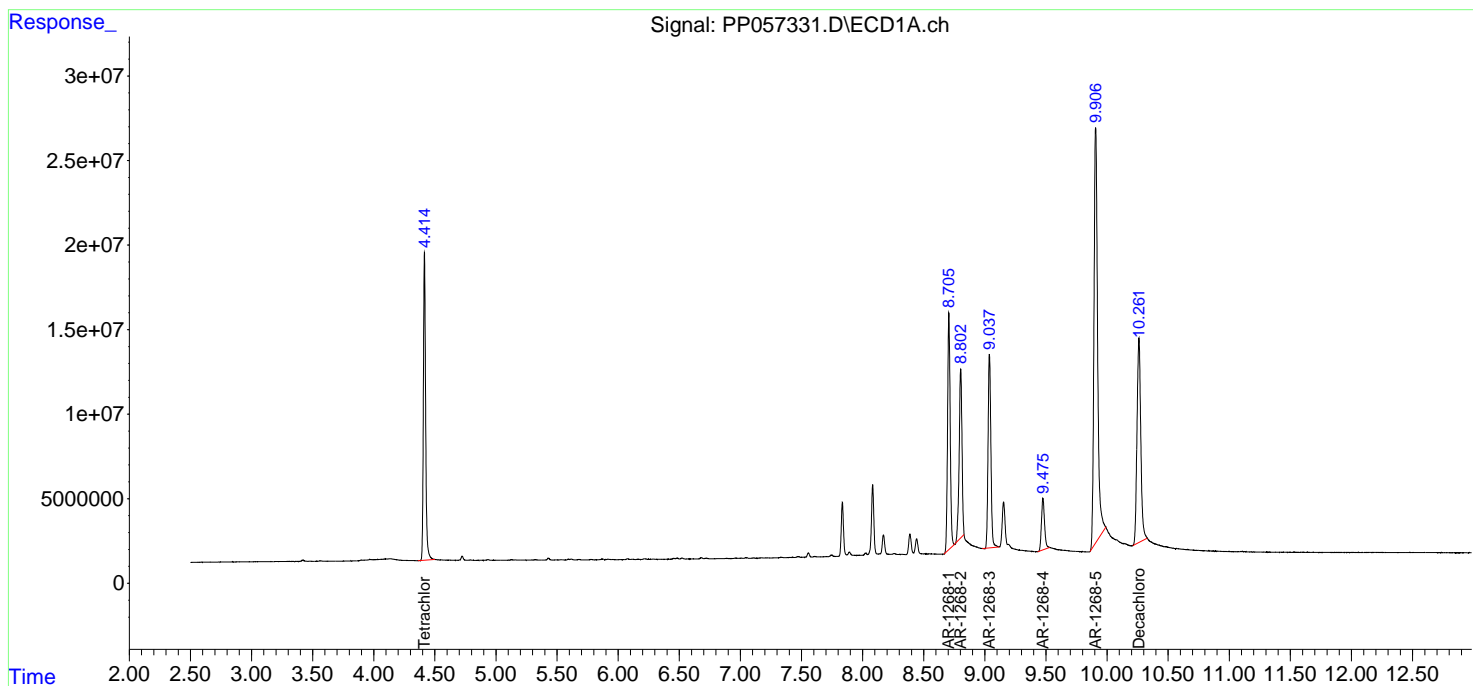
(f)=RT Delta > 1/2 Window (#)=Amounts differ by > 25% (m)=manual int.

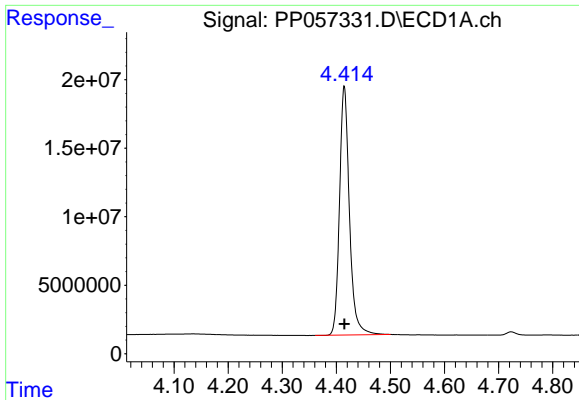
Data Path : Z:\pestpcbsrv\HPCHEM1\ECD_P\Data\PP050123\
 Data File : PP057331.D
 Signal(s) : Signal #1: ECD1A.ch Signal #2: ECD2B.ch
 Acq On : 01 May 2023 17:11
 Operator : YP\AJ
 Sample : AR1268ICC1000
 Misc :
 ALS Vial : 26 Sample Multiplier: 1

Instrument :
 ECD_P
 ClientSampleId :
 AR1268ICC1000

Integration File signal 1: autoint1.e
 Integration File signal 2: autoint2.e
 Quant Time: May 01 18:03:47 2023
 Quant Method : Z:\pestpcbsrv\HPCHEM1\ECD_P\methods\PP050123.M
 Quant Title : GC EXTRACTABLES
 QLast Update : Mon May 01 18:03:10 2023
 Response via : Initial Calibration
 Integrator: ChemStation

Volume Inj. : 2 µl
 Signal #1 Phase : ZB-MR1 Signal #2 Phase: ZB-MR2
 Signal #1 Info : 30Mx0.32mmx 0.50µ Signal #2 Info : 30M x 0.32mm x 0.25µm

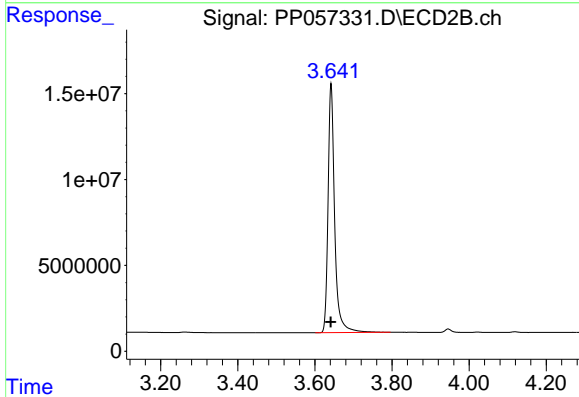




#1 Tetrachloro-m-xylene

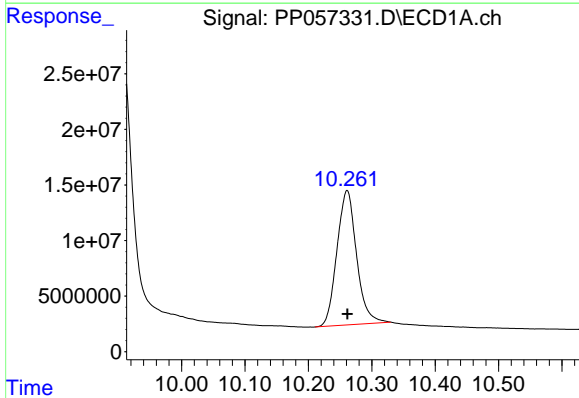
R.T.: 4.415 min
 Delta R.T.: 0.000 min
 Response: 230839842
 Conc: 97.82 ng/ml

Instrument :
 ECD_P
 ClientSampleId :
 AR1268ICC1000



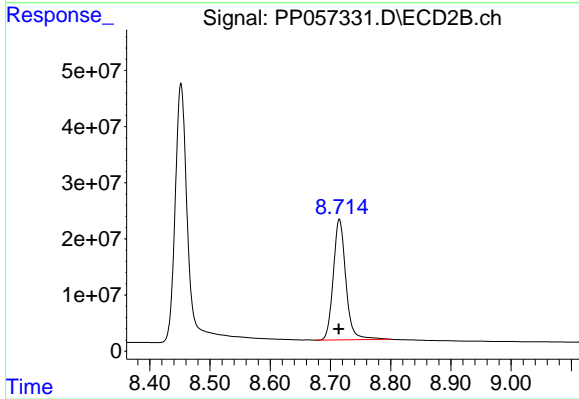
#1 Tetrachloro-m-xylene

R.T.: 3.642 min
 Delta R.T.: 0.000 min
 Response: 173351928
 Conc: 98.45 ng/ml



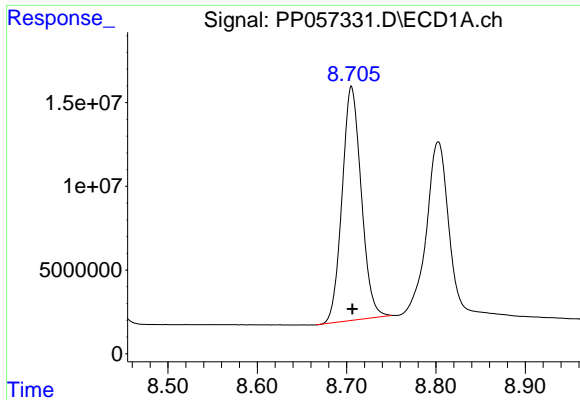
#2 Decachlorobiphenyl

R.T.: 10.261 min
 Delta R.T.: 0.000 min
 Response: 260327930
 Conc: 96.67 ng/ml



#2 Decachlorobiphenyl

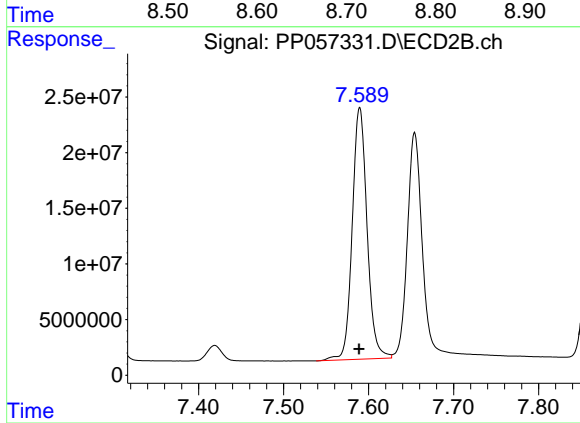
R.T.: 8.715 min
 Delta R.T.: 0.001 min
 Response: 311256907
 Conc: 96.15 ng/ml



#41 AR-1268-1

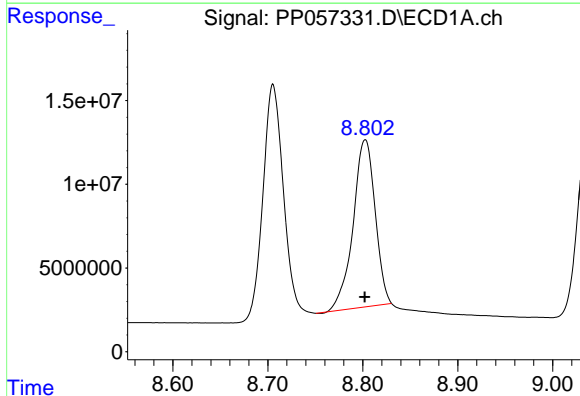
R.T.: 8.705 min
 Delta R.T.: -0.001 min
 Response: 208337492
 Conc: 976.18 ng/ml

Instrument :
 ECD_P
 ClientSampleId :
 AR1268ICC1000



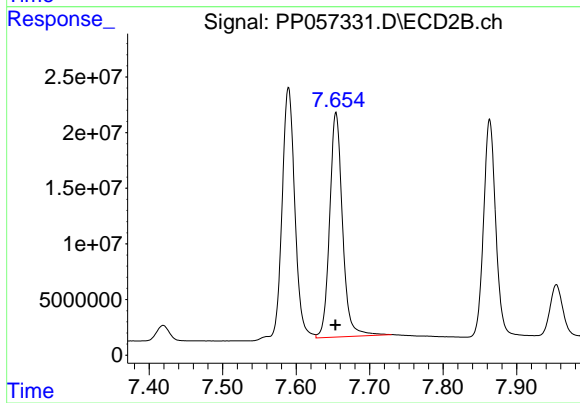
#41 AR-1268-1

R.T.: 7.590 min
 Delta R.T.: 0.000 min
 Response: 274391644
 Conc: 966.25 ng/ml



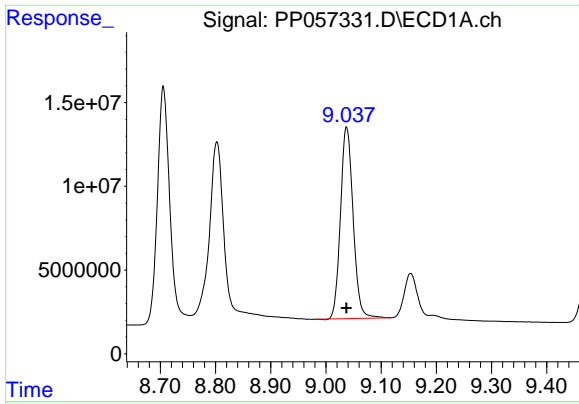
#42 AR-1268-2

R.T.: 8.803 min
 Delta R.T.: 0.000 min
 Response: 160878574
 Conc: 987.46 ng/ml



#42 AR-1268-2

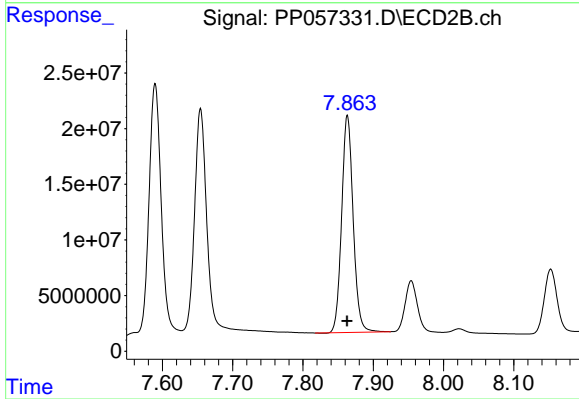
R.T.: 7.654 min
 Delta R.T.: 0.000 min
 Response: 245184964
 Conc: 967.57 ng/ml



#43 AR-1268-3

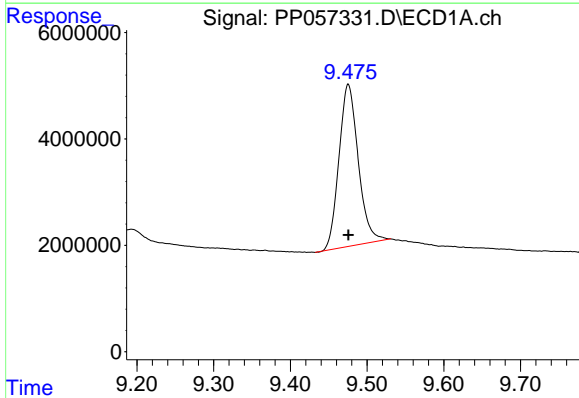
R.T.: 9.037 min
 Delta R.T.: 0.000 min
 Response: 182099773
 Conc: 968.31 ng/ml

Instrument :
 ECD_P
 ClientSampleId :
 AR1268ICC1000



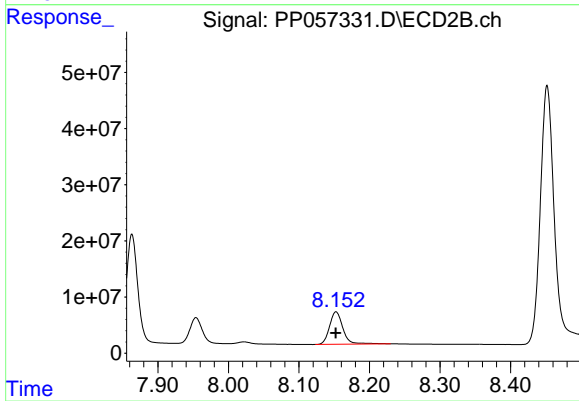
#43 AR-1268-3

R.T.: 7.863 min
 Delta R.T.: 0.000 min
 Response: 222052256
 Conc: 960.48 ng/ml



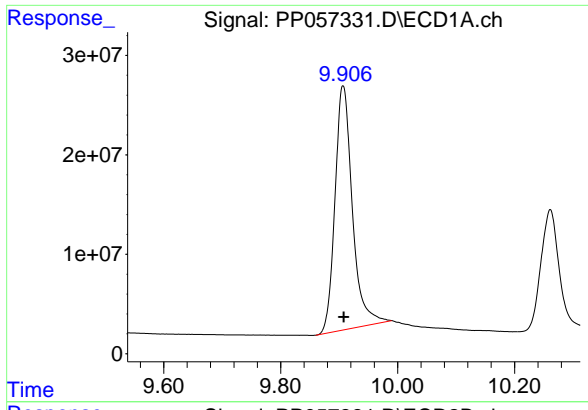
#44 AR-1268-4

R.T.: 9.475 min
 Delta R.T.: 0.000 min
 Response: 53348120
 Conc: 1027.86 ng/ml



#44 AR-1268-4

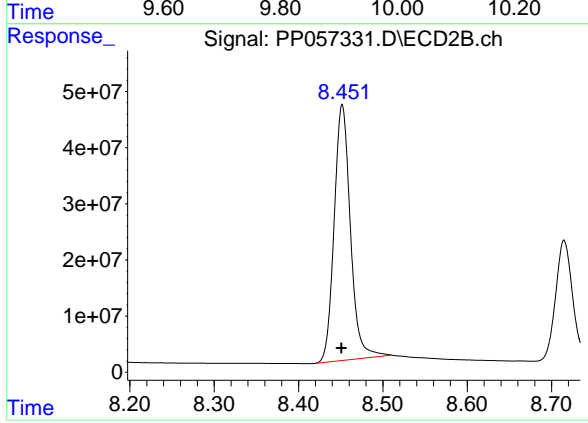
R.T.: 8.153 min
 Delta R.T.: 0.000 min
 Response: 76592267
 Conc: 945.09 ng/ml



#45 AR-1268-5

R.T.: 9.907 min
Delta R.T.: -0.001 min
Response: 507634168
Conc: 995.70 ng/ml

Instrument :
ECD_P
ClientSampleId :
AR1268ICC1000



#45 AR-1268-5

R.T.: 8.452 min
Delta R.T.: 0.000 min
Response: 609887110
Conc: 997.89 ng/ml