

Data Path : Z:\pestpcbsrv\HPCHEM1\ECD\_P\Data\PP050222\  
 Data File : PP046935.D  
 Signal(s) : Signal #1: ECD1A.ch Signal #2: ECD2B.ch  
 Acq On : 03 May 2022 04:28  
 Operator : YP\AJ  
 Sample : PB144491BSD  
 Misc :  
 ALS Vial : 44 Sample Multiplier: 1

Instrument :  
 ECD\_P  
 ClientSampleId :  
 PB144491BSD

Integration File signal 1: autoint1.e  
 Integration File signal 2: autoint2.e  
 Quant Time: May 03 05:59:19 2022  
 Quant Method : Z:\pestpcbsrv\HPCHEM1\ECD\_P\methods\PP042222.M  
 Quant Title : GC EXTRACTABLES  
 QLast Update : Fri Apr 22 19:00:06 2022  
 Response via : Initial Calibration  
 Integrator: ChemStation

Volume Inj. : 2 µl  
 Signal #1 Phase : ZB-MR1 Signal #2 Phase: ZB-MR2  
 Signal #1 Info : 30Mx0.32mmx 0.50µ Signal #2 Info : 30M x 0.32mm x 0.25µm

Compound	RT#1	RT#2	Resp#1	Resp#2	ng/ml	ng/ml
-----						
System Monitoring Compounds						
1) SA Tetrachlo...	3.859	3.124	51444637	67746041	21.311	20.652
2) SA Decachlor...	9.932	8.437	30906754	49039260	21.003	20.559
Target Compounds						
3) L1 AR-1016-1	5.103	4.253	36586784	57240187	485.870	498.240
4) L1 AR-1016-2	5.127	4.271	53505619	84573702	469.878	498.472
5) L1 AR-1016-3	5.192	4.455	33963480	43961746	475.112	502.160
6) L1 AR-1016-4	5.297	4.503	28108784	33922744	467.530	487.254
7) L1 AR-1016-5	5.616	4.726	25026252	42500009	472.664	499.690
31) L7 AR-1260-1	6.840	5.827	41345302	88524302	489.935	556.317
32) L7 AR-1260-2	7.122	6.033	51346080	127.2E6	509.935	625.543
33) L7 AR-1260-3	7.516	6.193	33326399	104.5E6	411.377	611.570 #
34) L7 AR-1260-4	7.764	6.703	33555383	71621148	421.282	492.770
35) L7 AR-1260-5	8.103	6.971	67637953	179.2E6	425.815	510.265

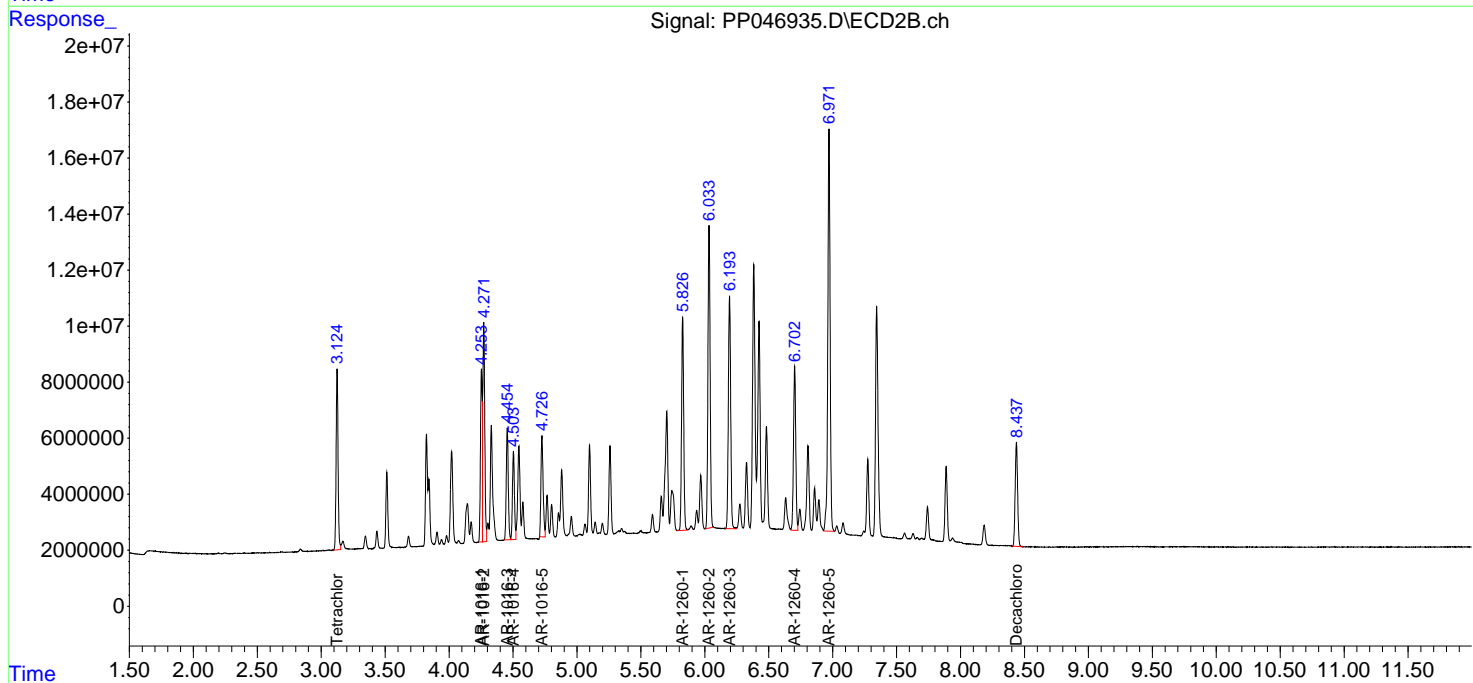
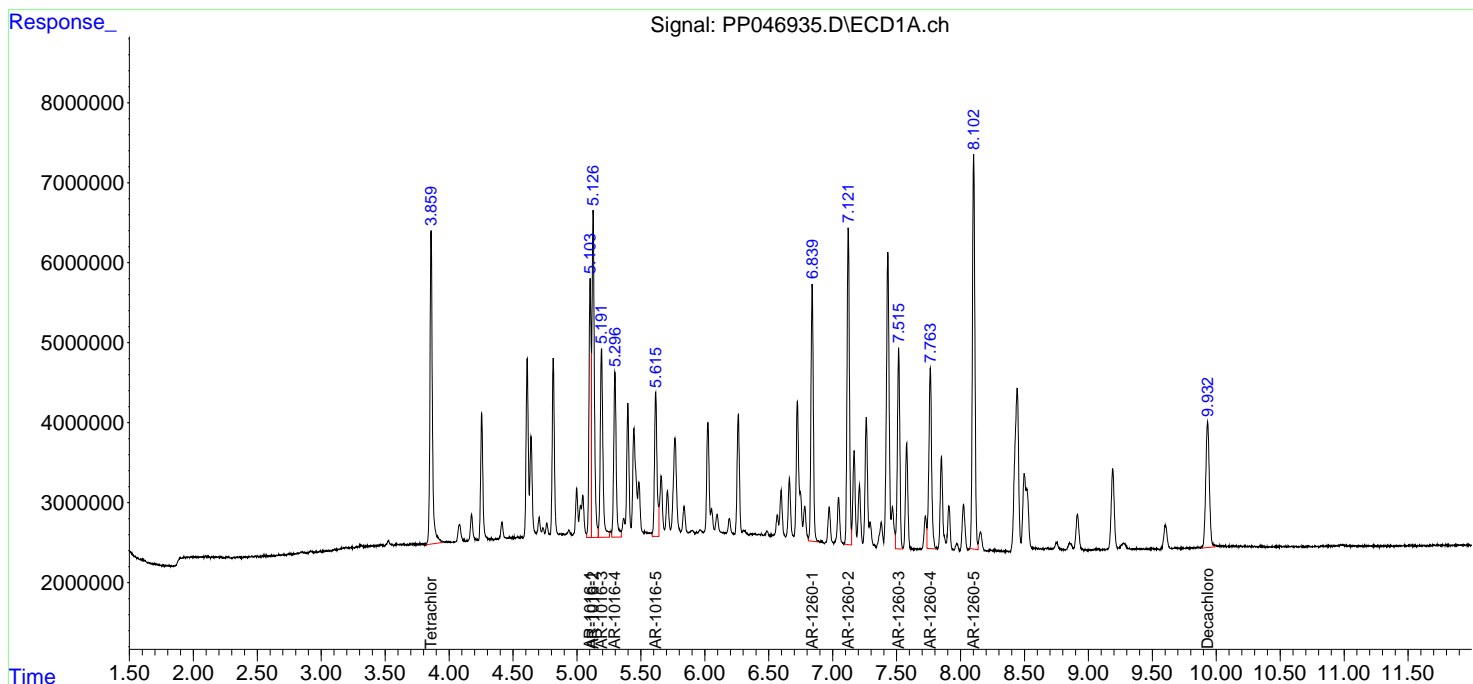
(f)=RT Delta > 1/2 Window (#)=Amounts differ by > 25% (m)=manual int.

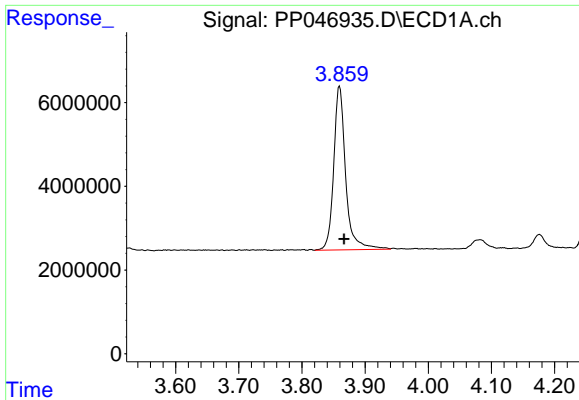
Data Path : Z:\pestpcbsrv\HPCHEM1\ECD\_P\Data\PP050222\  
 Data File : PP046935.D  
 Signal(s) : Signal #1: ECD1A.ch Signal #2: ECD2B.ch  
 Acq On : 03 May 2022 04:28  
 Operator : YP\AJ  
 Sample : PB144491BSD  
 Misc :  
 ALS Vial : 44 Sample Multiplier: 1

Instrument :  
 ECD\_P  
 ClientSampleId :  
 PB144491BSD

Integration File signal 1: autoint1.e  
 Integration File signal 2: autoint2.e  
 Quant Time: May 03 05:59:19 2022  
 Quant Method : Z:\pestpcbsrv\HPCHEM1\ECD\_P\methods\PP042222.M  
 Quant Title : GC EXTRACTABLES  
 QLast Update : Fri Apr 22 19:00:06 2022  
 Response via : Initial Calibration  
 Integrator: ChemStation

Volume Inj. : 2 µl  
 Signal #1 Phase : ZB-MR1 Signal #2 Phase: ZB-MR2  
 Signal #1 Info : 30Mx0.32mmx 0.50µ Signal #2 Info : 30M x 0.32mm x 0.25µm

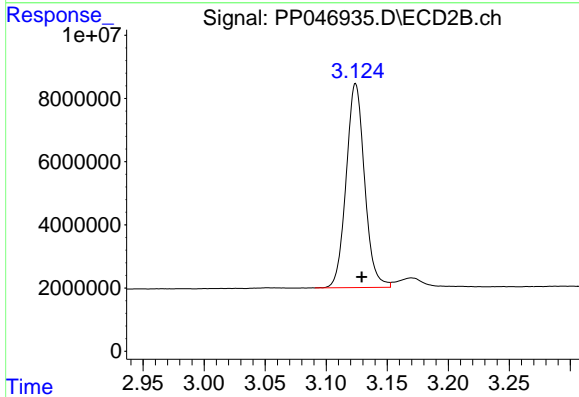




#1 Tetrachloro-m-xylene

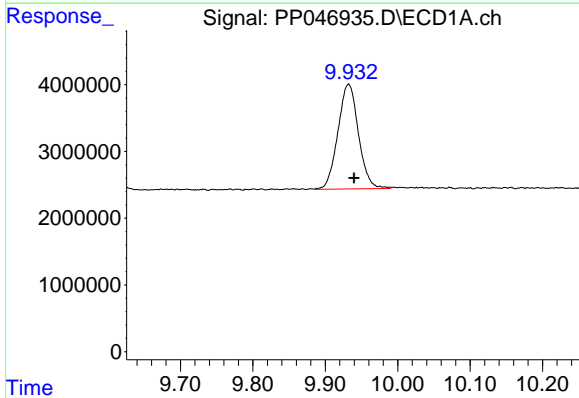
R.T.: 3.859 min  
Delta R.T.: -0.008 min  
Response: 51444637  
Conc: 21.31 ng/ml

Instrument :  
ECD\_P  
ClientSampleId :  
PB144491BSD



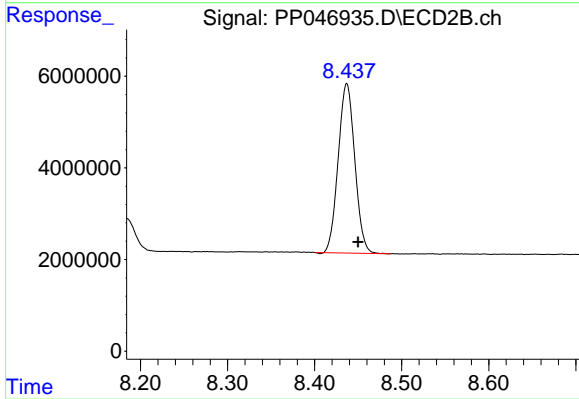
#1 Tetrachloro-m-xylene

R.T.: 3.124 min  
Delta R.T.: -0.005 min  
Response: 67746041  
Conc: 20.65 ng/ml



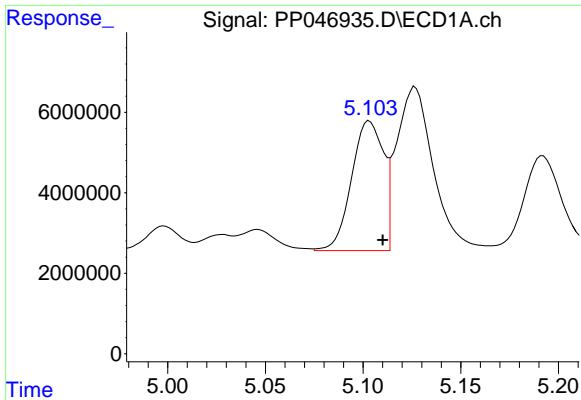
#2 Decachlorobiphenyl

R.T.: 9.932 min  
Delta R.T.: -0.008 min  
Response: 30906754  
Conc: 21.00 ng/ml



#2 Decachlorobiphenyl

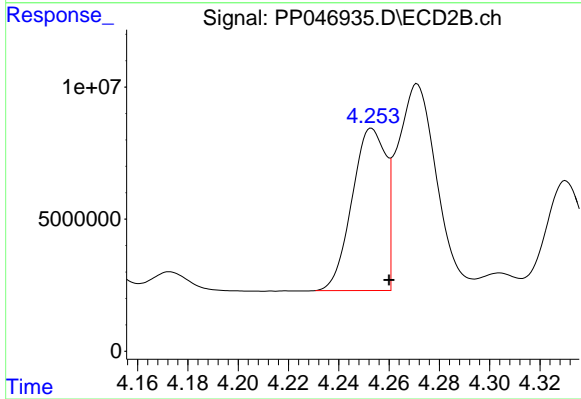
R.T.: 8.437 min  
Delta R.T.: -0.013 min  
Response: 49039260  
Conc: 20.56 ng/ml



#3 AR-1016-1

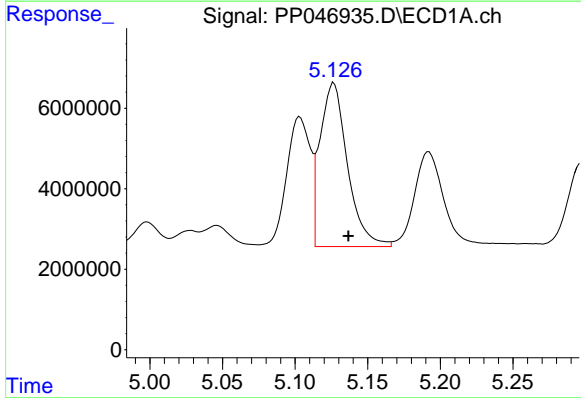
R.T.: 5.103 min  
 Delta R.T.: -0.007 min  
 Response: 36586784  
 Conc: 485.87 ng/ml

Instrument :  
 ECD\_P  
 ClientSampleId :  
 PB144491BSD



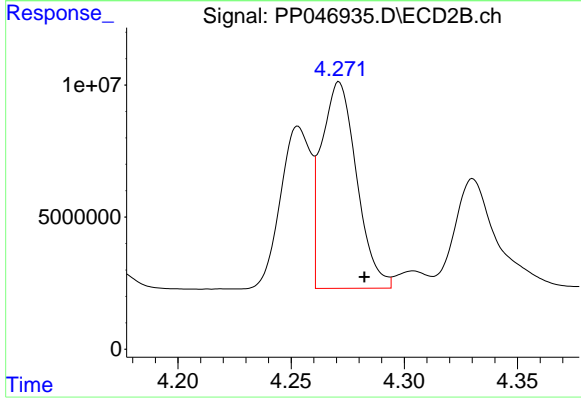
#3 AR-1016-1

R.T.: 4.253 min  
 Delta R.T.: -0.007 min  
 Response: 57240187  
 Conc: 498.24 ng/ml



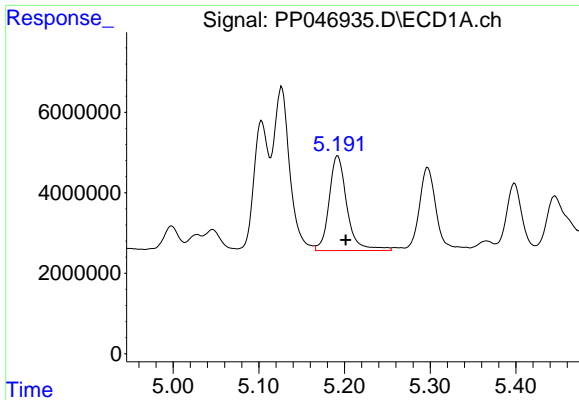
#4 AR-1016-2

R.T.: 5.127 min  
 Delta R.T.: -0.010 min  
 Response: 53505619  
 Conc: 469.88 ng/ml



#4 AR-1016-2

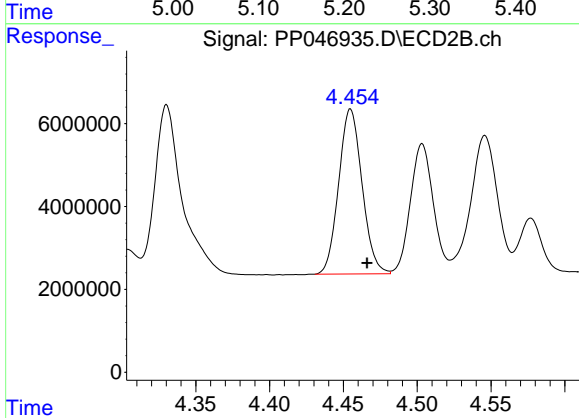
R.T.: 4.271 min  
 Delta R.T.: -0.011 min  
 Response: 84573702  
 Conc: 498.47 ng/ml



#5 AR-1016-3

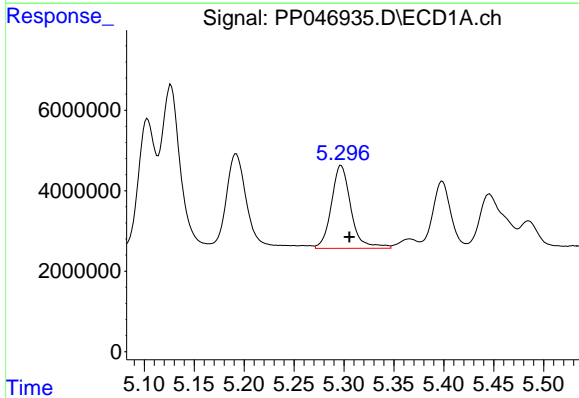
R.T.: 5.192 min  
Delta R.T.: -0.009 min  
Response: 33963480  
Conc: 475.11 ng/ml

Instrument :  
ECD\_P  
ClientSampleId :  
PB144491BSD



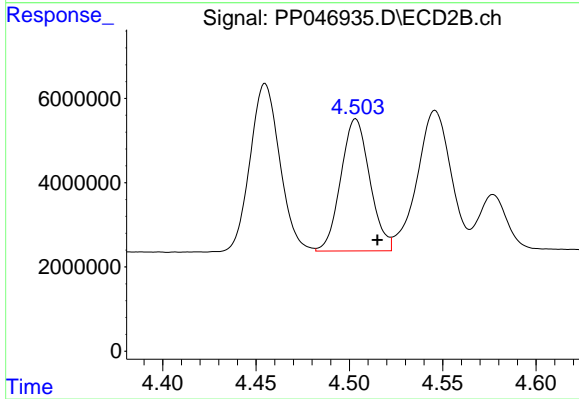
#5 AR-1016-3

R.T.: 4.455 min  
Delta R.T.: -0.011 min  
Response: 43961746  
Conc: 502.16 ng/ml



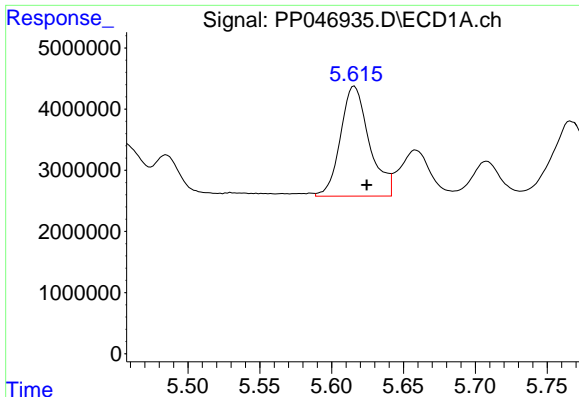
#6 AR-1016-4

R.T.: 5.297 min  
Delta R.T.: -0.008 min  
Response: 28108784  
Conc: 467.53 ng/ml



#6 AR-1016-4

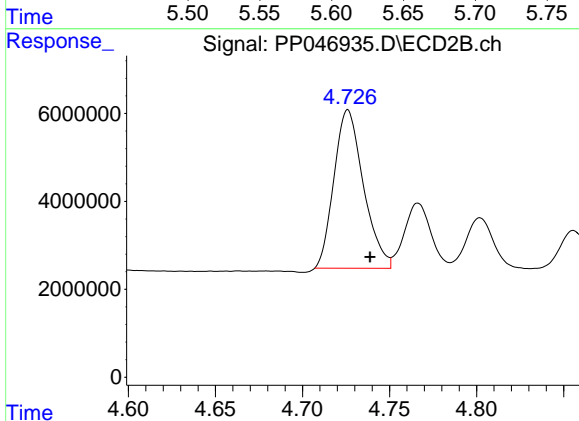
R.T.: 4.503 min  
Delta R.T.: -0.012 min  
Response: 33922744  
Conc: 487.25 ng/ml



#7 AR-1016-5

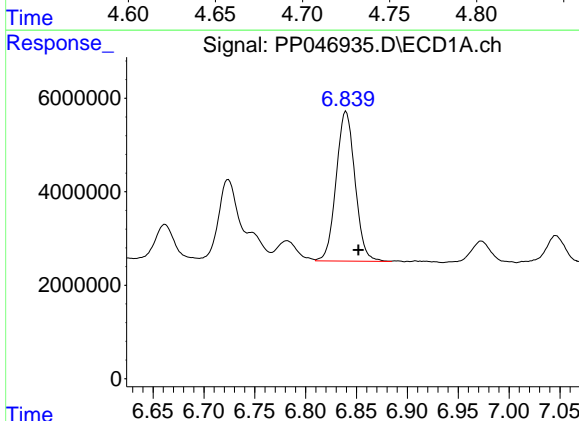
R.T.: 5.616 min  
 Delta R.T.: -0.009 min  
 Response: 25026252  
 Conc: 472.66 ng/ml

Instrument :  
 ECD\_P  
 ClientSampleId :  
 PB144491BSD



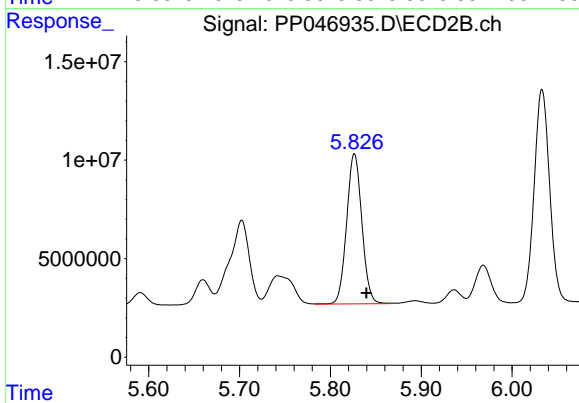
#7 AR-1016-5

R.T.: 4.726 min  
 Delta R.T.: -0.013 min  
 Response: 42500009  
 Conc: 499.69 ng/ml



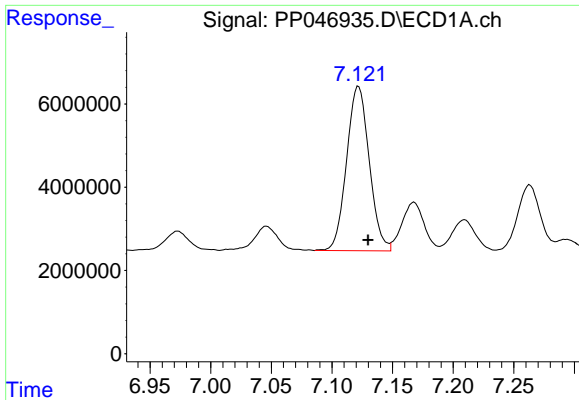
#31 AR-1260-1

R.T.: 6.840 min  
 Delta R.T.: -0.012 min  
 Response: 41345302  
 Conc: 489.93 ng/ml



#31 AR-1260-1

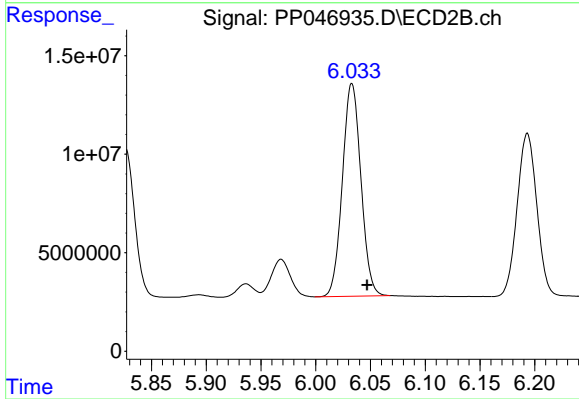
R.T.: 5.827 min  
 Delta R.T.: -0.013 min  
 Response: 88524302  
 Conc: 556.32 ng/ml



#32 AR-1260-2

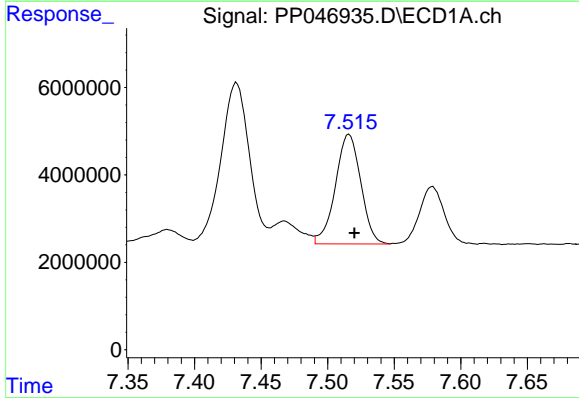
R.T.: 7.122 min  
 Delta R.T.: -0.008 min  
 Response: 51346080  
 Conc: 509.94 ng/ml

Instrument :  
 ECD\_P  
 ClientSampleId :  
 PB144491BSD



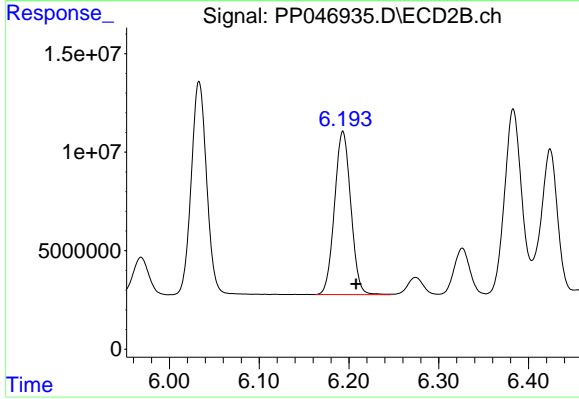
#32 AR-1260-2

R.T.: 6.033 min  
 Delta R.T.: -0.014 min  
 Response: 127245044  
 Conc: 625.54 ng/ml



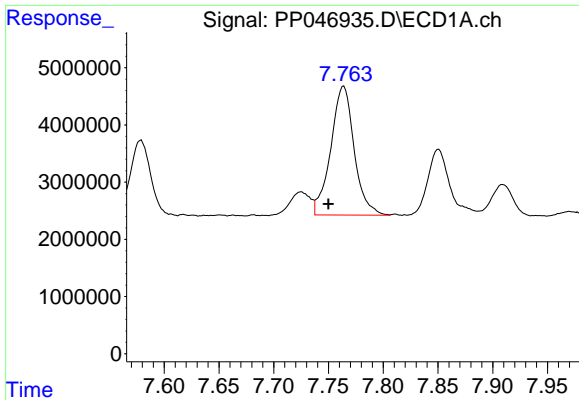
#33 AR-1260-3

R.T.: 7.516 min  
 Delta R.T.: -0.004 min  
 Response: 33326399  
 Conc: 411.38 ng/ml



#33 AR-1260-3

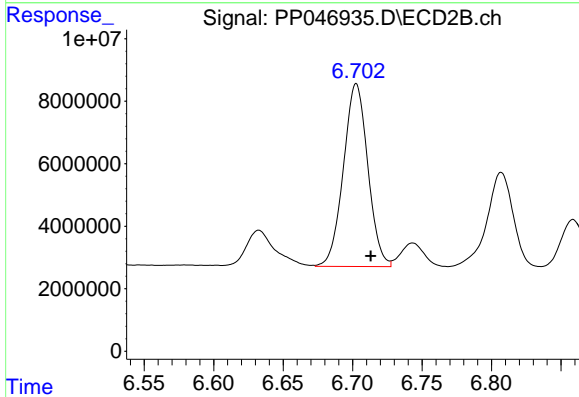
R.T.: 6.193 min  
 Delta R.T.: -0.015 min  
 Response: 104466118  
 Conc: 611.57 ng/ml



#34 AR-1260-4

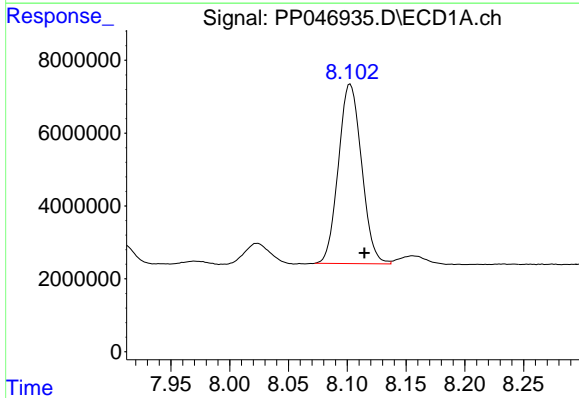
R.T.: 7.764 min  
 Delta R.T.: 0.014 min  
 Response: 33555383  
 Conc: 421.28 ng/ml

Instrument :  
 ECD\_P  
 ClientSampleId :  
 PB144491BSD



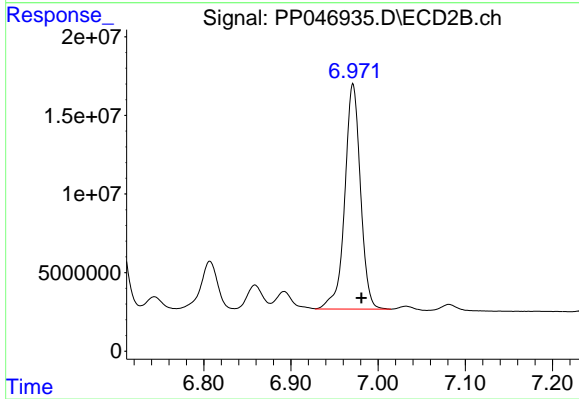
#34 AR-1260-4

R.T.: 6.703 min  
 Delta R.T.: -0.010 min  
 Response: 71621148  
 Conc: 492.77 ng/ml



#35 AR-1260-5

R.T.: 8.103 min  
 Delta R.T.: -0.012 min  
 Response: 67637953  
 Conc: 425.82 ng/ml



#35 AR-1260-5

R.T.: 6.971 min  
 Delta R.T.: -0.010 min  
 Response: 179166118  
 Conc: 510.26 ng/ml