

Data Path : Z:\pestpcbsrv\HPCHEM1\ECD_P\Data\PP050222\
 Data File : PP046949.D
 Signal(s) : Signal #1: ECD1A.ch Signal #2: ECD2B.ch
 Acq On : 03 May 2022 11:30
 Operator : YP\AJ
 Sample : AR1660CCC500
 Misc :
 ALS Vial : 3 Sample Multiplier: 1

Instrument :
 ECD_P
 ClientSampleId :
 AR1660CCC500

Integration File signal 1: autoint1.e
 Integration File signal 2: autoint2.e
 Quant Time: May 03 12:41:15 2022
 Quant Method : Z:\pestpcbsrv\HPCHEM1\ECD_P\methods\PP042222.M
 Quant Title : GC EXTRACTABLES
 QLast Update : Tue May 03 11:45:42 2022
 Response via : Initial Calibration
 Integrator: ChemStation

Volume Inj. : 2 µl
 Signal #1 Phase : ZB-MR1 Signal #2 Phase: ZB-MR2
 Signal #1 Info : 30Mx0.32mmx 0.50µ Signal #2 Info : 30M x 0.32mm x 0.25µm

Compound	RT#1	RT#2	Resp#1	Resp#2	ng/ml	ng/ml
System Monitoring Compounds						
1) SA Tetrachlo...	3.858	3.125	116.6E6	165.2E6	48.285	50.374
2) SA Decachlor...	9.932	8.436	63581809	115.1E6	43.209	48.256
Target Compounds						
3) L1 AR-1016-1	5.101	4.253	34236239	58631549	454.655	510.351
4) L1 AR-1016-2	5.124	4.271	51501670	86005270	452.279	506.909
5) L1 AR-1016-3	5.190	4.455	30913769	43207167	432.450	493.541
6) L1 AR-1016-4	5.295	4.503	26426305	34332153	439.545	493.135
7) L1 AR-1016-5	5.614	4.726	26322351	47141966	497.143	554.268
31) L7 AR-1260-1	6.838	5.825	37900883	80117119	449.119	503.484
32) L7 AR-1260-2	7.120	6.033	45798841	113.5E6	454.844	557.925
33) L7 AR-1260-3	7.514	6.193	36714885	92245496	453.204	540.027
34) L7 AR-1260-4	7.761	6.702	34456576	79546777	432.596	547.300 #
35) L7 AR-1260-5	8.101	6.971	71522890	188.8E6	450.273	537.660

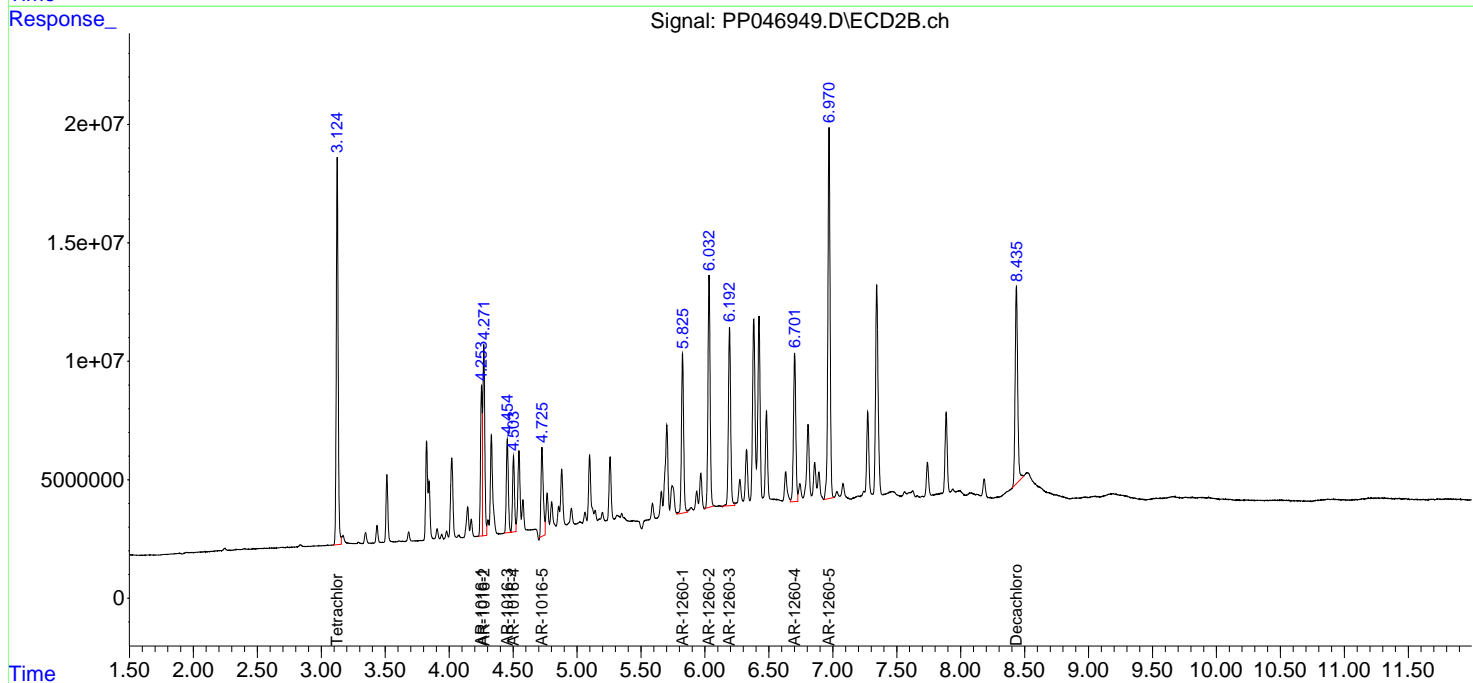
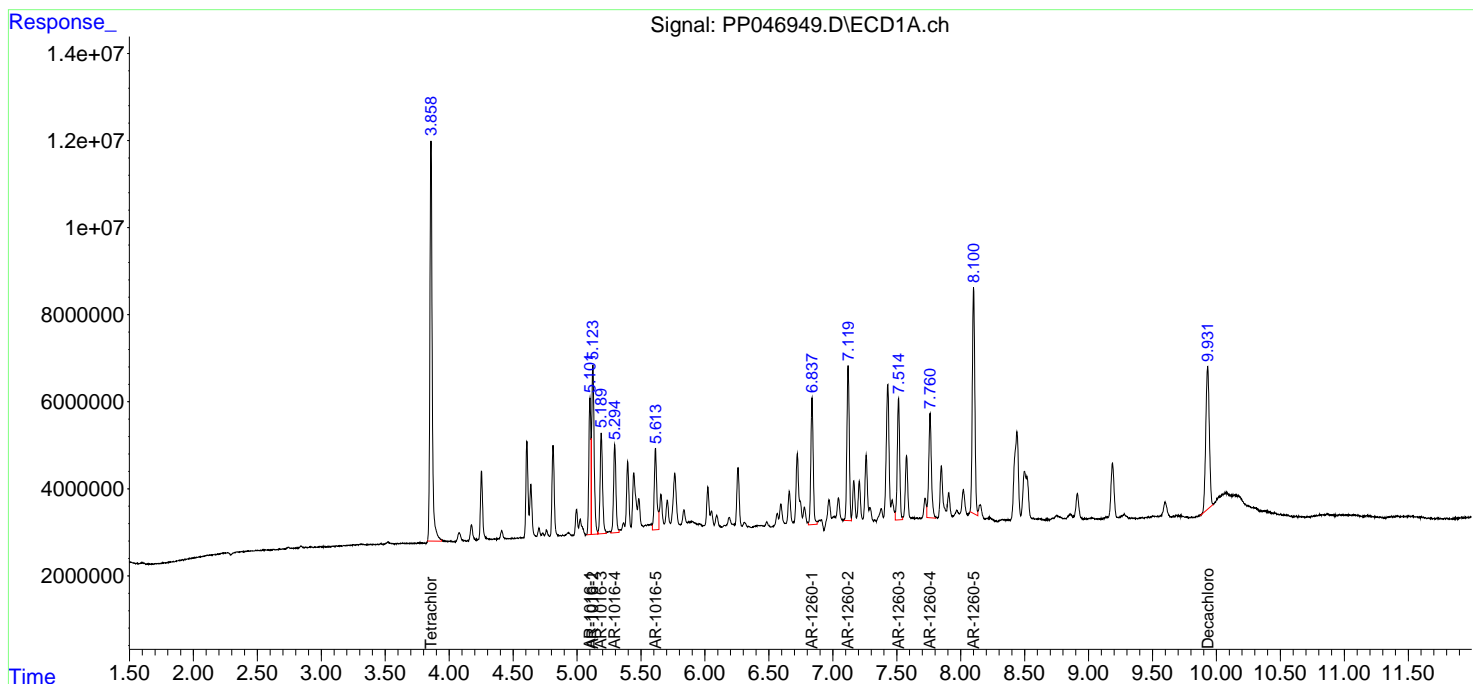
(f)=RT Delta > 1/2 Window (#)=Amounts differ by > 25% (m)=manual int.

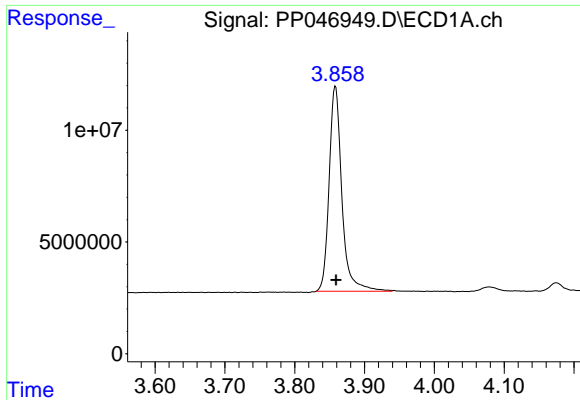
Data Path : Z:\pestpcbsrv\HPCHEM1\ECD_P\Data\PP050222\
 Data File : PP046949.D
 Signal(s) : Signal #1: ECD1A.ch Signal #2: ECD2B.ch
 Acq On : 03 May 2022 11:30
 Operator : YP\AJ
 Sample : AR1660CCC500
 Misc :
 ALS Vial : 3 Sample Multiplier: 1

Instrument :
 ECD_P
 ClientSampleId :
 AR1660CCC500

Integration File signal 1: autoint1.e
 Integration File signal 2: autoint2.e
 Quant Time: May 03 12:41:15 2022
 Quant Method : Z:\pestpcbsrv\HPCHEM1\ECD_P\methods\PP042222.M
 Quant Title : GC EXTRACTABLES
 QLast Update : Tue May 03 11:45:42 2022
 Response via : Initial Calibration
 Integrator: ChemStation

Volume Inj. : 2 µl
 Signal #1 Phase : ZB-MR1 Signal #2 Phase: ZB-MR2
 Signal #1 Info : 30Mx0.32mmx 0.50µ Signal #2 Info : 30M x 0.32mm x 0.25µm

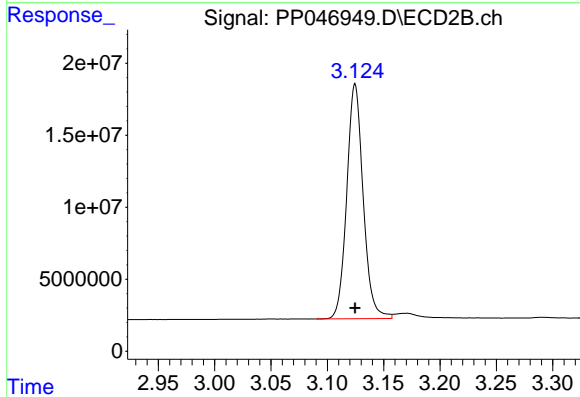




#1 Tetrachloro-m-xylene

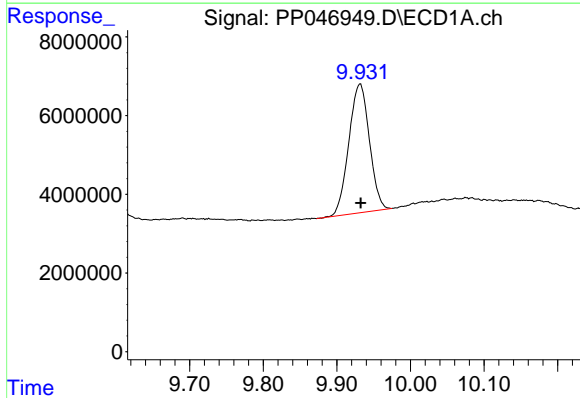
R.T.: 3.858 min
 Delta R.T.: 0.000 min
 Response: 116558016
 Conc: 48.29 ng/ml

Instrument :
 ECD_P
 ClientSampleId :
 AR1660CCC500



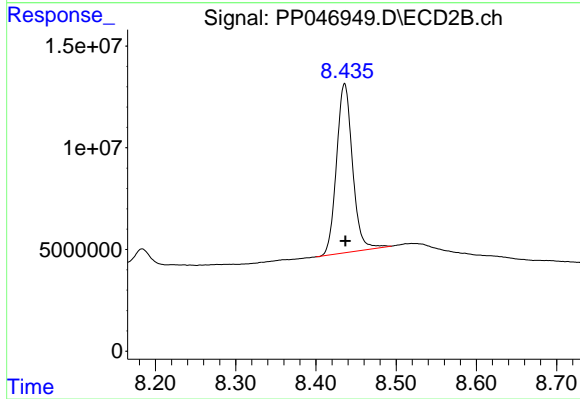
#1 Tetrachloro-m-xylene

R.T.: 3.125 min
 Delta R.T.: 0.000 min
 Response: 165244823
 Conc: 50.37 ng/ml



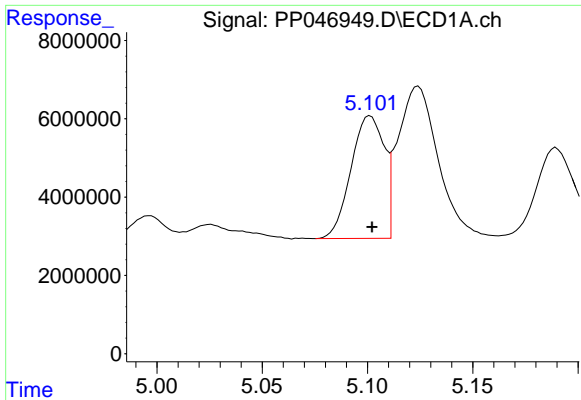
#2 Decachlorobiphenyl

R.T.: 9.932 min
 Delta R.T.: 0.000 min
 Response: 63581809
 Conc: 43.21 ng/ml



#2 Decachlorobiphenyl

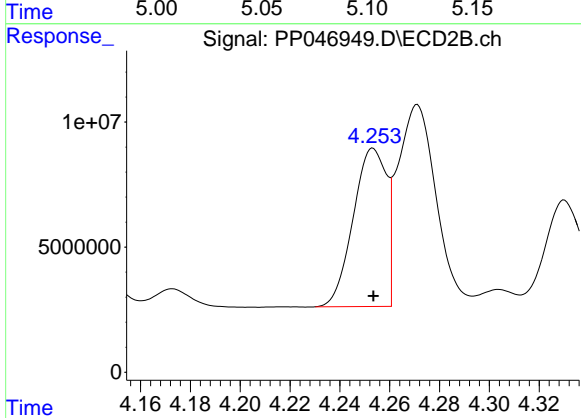
R.T.: 8.436 min
 Delta R.T.: 0.000 min
 Response: 115105936
 Conc: 48.26 ng/ml



#3 AR-1016-1

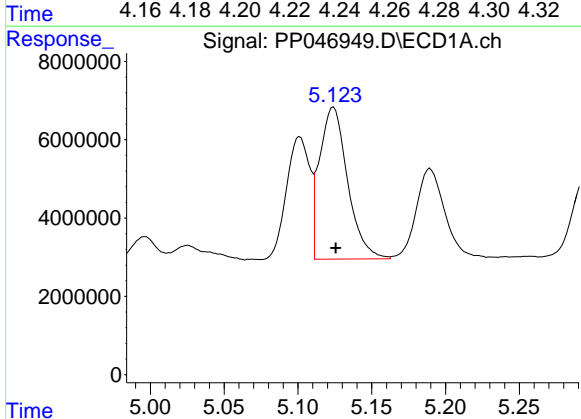
R.T.: 5.101 min
 Delta R.T.: 0.000 min
 Response: 34236239
 Conc: 454.65 ng/ml

Instrument :
 ECD_P
 ClientSampleId :
 AR1660CCC500



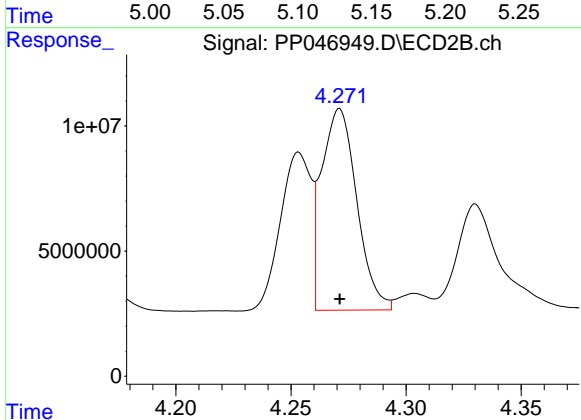
#3 AR-1016-1

R.T.: 4.253 min
 Delta R.T.: 0.000 min
 Response: 58631549
 Conc: 510.35 ng/ml



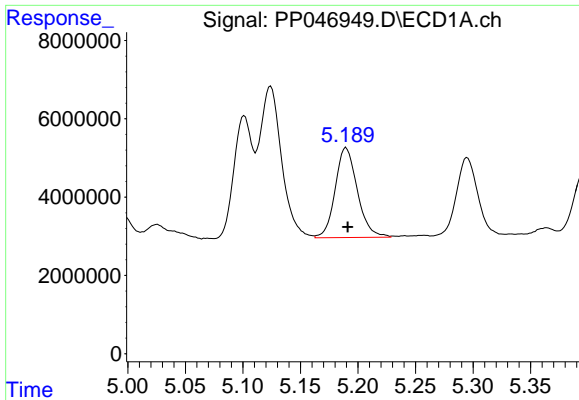
#4 AR-1016-2

R.T.: 5.124 min
 Delta R.T.: -0.001 min
 Response: 51501670
 Conc: 452.28 ng/ml



#4 AR-1016-2

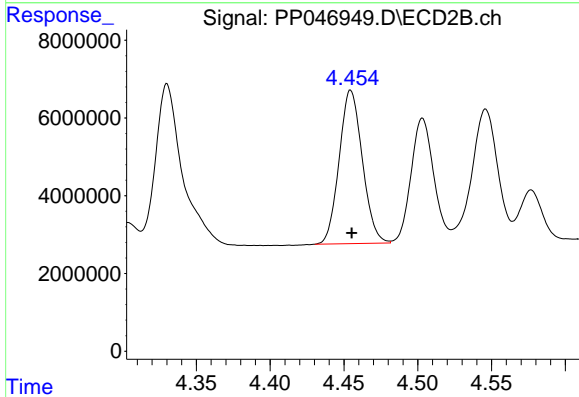
R.T.: 4.271 min
 Delta R.T.: 0.000 min
 Response: 86005270
 Conc: 506.91 ng/ml



#5 AR-1016-3

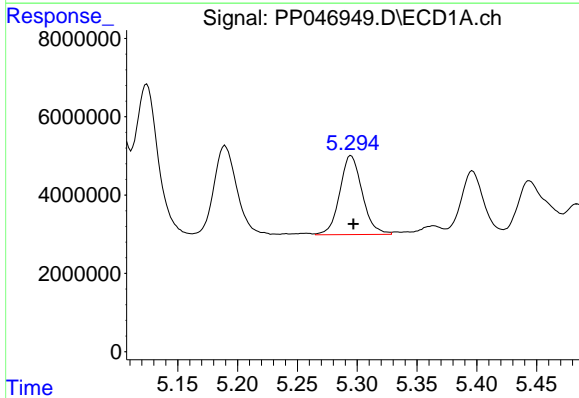
R.T.: 5.190 min
 Delta R.T.: -0.001 min
 Response: 30913769
 Conc: 432.45 ng/ml

Instrument :
 ECD_P
 ClientSampleId :
 AR1660CCC500



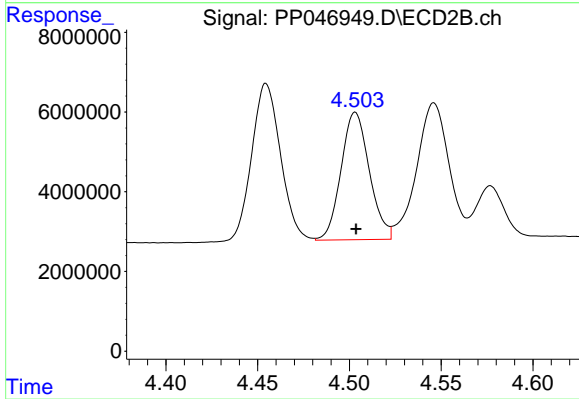
#5 AR-1016-3

R.T.: 4.455 min
 Delta R.T.: 0.000 min
 Response: 43207167
 Conc: 493.54 ng/ml



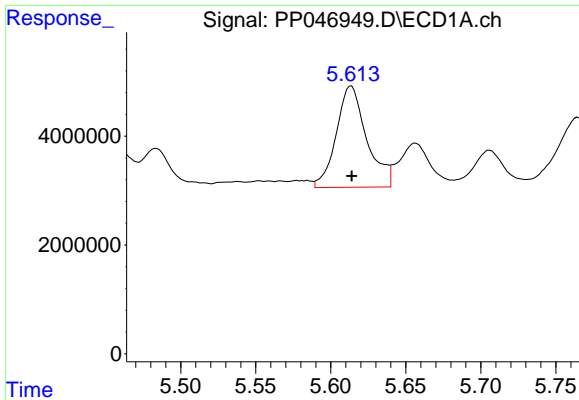
#6 AR-1016-4

R.T.: 5.295 min
 Delta R.T.: -0.002 min
 Response: 26426305
 Conc: 439.55 ng/ml



#6 AR-1016-4

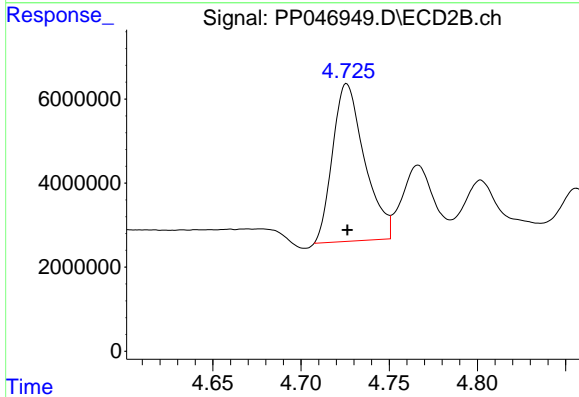
R.T.: 4.503 min
 Delta R.T.: 0.000 min
 Response: 34332153
 Conc: 493.13 ng/ml



#7 AR-1016-5

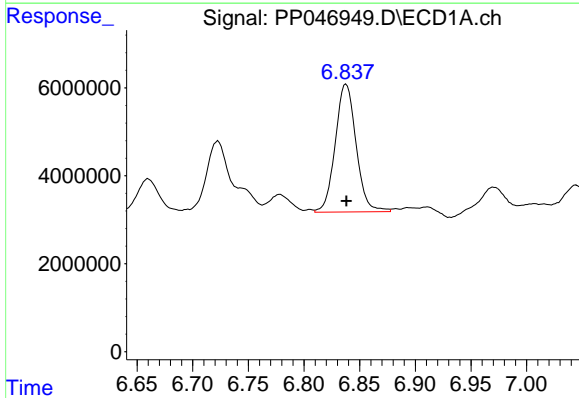
R.T.: 5.614 min
 Delta R.T.: 0.000 min
 Response: 26322351
 Conc: 497.14 ng/ml

Instrument :
 ECD_P
 ClientSampleId :
 AR1660CCC500



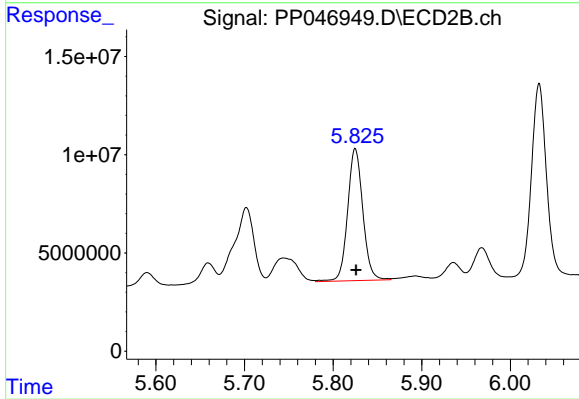
#7 AR-1016-5

R.T.: 4.726 min
 Delta R.T.: 0.000 min
 Response: 47141966
 Conc: 554.27 ng/ml



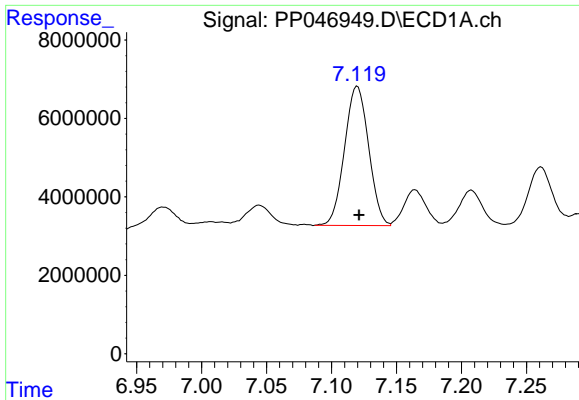
#31 AR-1260-1

R.T.: 6.838 min
 Delta R.T.: 0.000 min
 Response: 37900883
 Conc: 449.12 ng/ml



#31 AR-1260-1

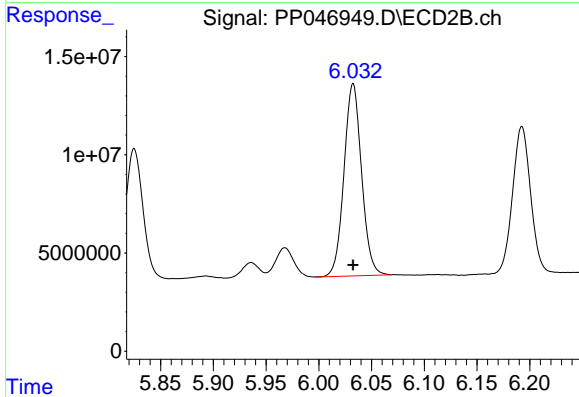
R.T.: 5.825 min
 Delta R.T.: 0.000 min
 Response: 80117119
 Conc: 503.48 ng/ml



#32 AR-1260-2

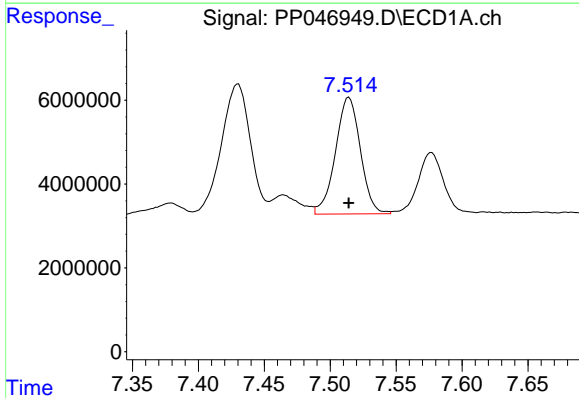
R.T.: 7.120 min
 Delta R.T.: -0.001 min
 Response: 45798841
 Conc: 454.84 ng/ml

Instrument :
 ECD_P
 ClientSampleId :
 AR1660CCC500



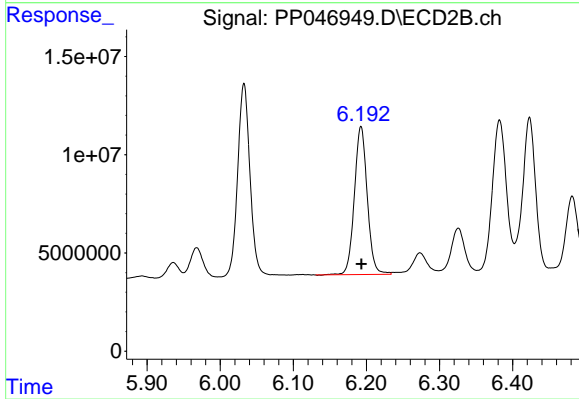
#32 AR-1260-2

R.T.: 6.033 min
 Delta R.T.: 0.000 min
 Response: 113490452
 Conc: 557.92 ng/ml



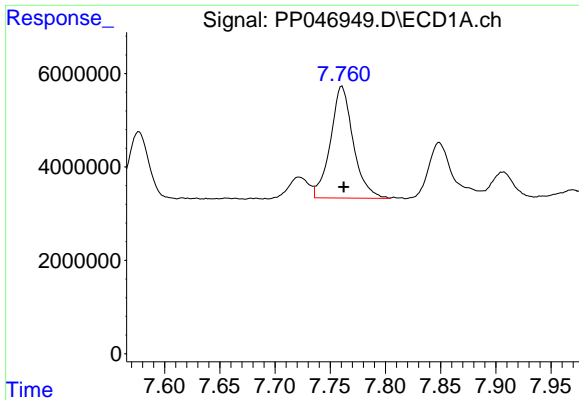
#33 AR-1260-3

R.T.: 7.514 min
 Delta R.T.: 0.000 min
 Response: 36714885
 Conc: 453.20 ng/ml



#33 AR-1260-3

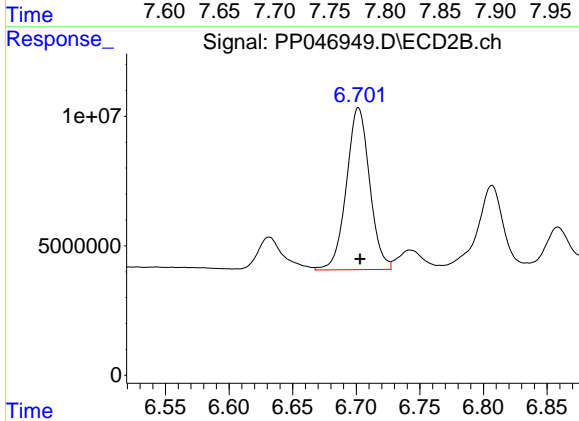
R.T.: 6.193 min
 Delta R.T.: 0.000 min
 Response: 92245496
 Conc: 540.03 ng/ml



#34 AR-1260-4

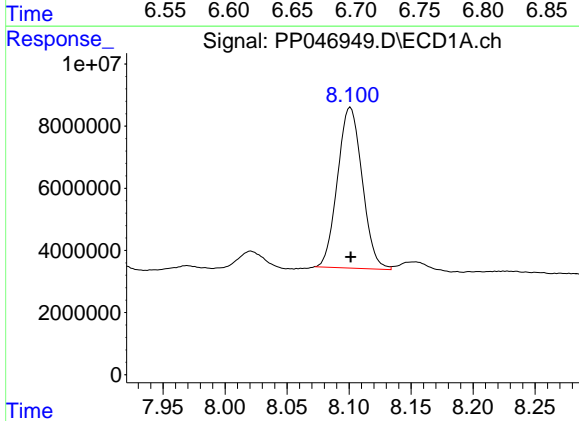
R.T.: 7.761 min
Delta R.T.: -0.002 min
Response: 34456576
Conc: 432.60 ng/ml

Instrument :
ECD_P
ClientSampleId :
AR1660CCC500



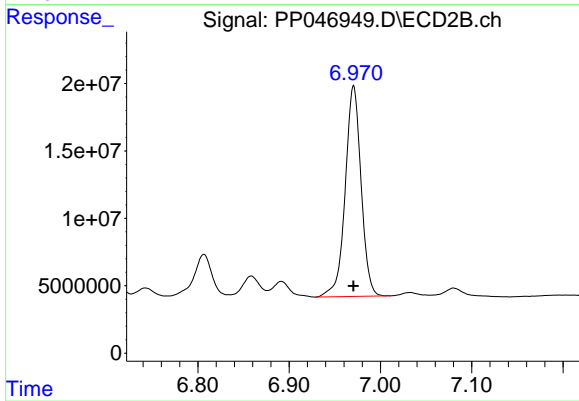
#34 AR-1260-4

R.T.: 6.702 min
Delta R.T.: -0.001 min
Response: 79546777
Conc: 547.30 ng/ml



#35 AR-1260-5

R.T.: 8.101 min
Delta R.T.: 0.000 min
Response: 71522890
Conc: 450.27 ng/ml



#35 AR-1260-5

R.T.: 6.971 min
Delta R.T.: 0.000 min
Response: 188785382
Conc: 537.66 ng/ml