

Data Path : Z:\pestpcbsrv\HPCHEM1\ECD_P\Data\PP050223\
 Data File : PP057405.D
 Signal(s) : Signal #1: ECD1A.ch Signal #2: ECD2B.ch
 Acq On : 02 May 2023 17:16
 Operator : YP\AJ
 Sample : 02566-05
 Misc :
 ALS Vial : 16 Sample Multiplier: 1

Instrument :
 ECD_P
 ClientSampleId :
 AUD-1989

Integration File signal 1: autoint1.e
 Integration File signal 2: autoint2.e
 Quant Time: May 03 04:35:08 2023
 Quant Method : Z:\pestpcbsrv\HPCHEM1\ECD_P\methods\PP050123.M
 Quant Title : GC EXTRACTABLES
 QLast Update : Mon May 01 18:39:24 2023
 Response via : Initial Calibration
 Integrator: ChemStation

Volume Inj. : 2 µl
 Signal #1 Phase : ZB-MR1 Signal #2 Phase: ZB-MR2
 Signal #1 Info : 30Mx0.32mmx 0.50µ Signal #2 Info : 30M x 0.32mm x 0.25µm

Compound	RT#1	RT#2	Resp#1	Resp#2	ng/ml	ng/ml

System Monitoring Compounds						
1) SA Tetrachlo...	4.395	3.645	246.5E6	32229313	104.658	18.178 #
2) SA Decachlor...	10.261	8.715	31669544	27614084	19.197	14.071 #
Target Compounds						
16) L4 AR-1242-1	5.595	4.745	4592.2E6	3717.7E6	85005.286	75452.969
17) L4 AR-1242-2	5.618	4.764	6282.4E6	4949.5E6	79841.782	72324.446
18) L4 AR-1242-3	5.680	4.943	3959.2E6	2693.2E6	80571.394	70632.526
19) L4 AR-1242-4	5.780	5.027	3230.2E6	1860.6E6	82310.658	43701.929 #
20) L4 AR-1242-5	6.524	5.557	1599.6E6	2086.7E6	46604.677	43880.481
26) L6 AR-1254-1	6.458	5.557	1506.5E6	2086.7E6	18701.785	19349.690
27) L6 AR-1254-2	6.681	5.706	1970.4E6	863.7E6	16998.626	9008.687 #
28) L6 AR-1254-3	7.049	6.113	1373.0E6	1259.0E6	12537.789	8372.715 #
29) L6 AR-1254-4	7.337	6.343	812.3E6	699.0E6	12836.784	8846.510 #
30) L6 AR-1254-5	7.758	6.764	474.3E6	529.8E6	6321.534	4171.109 #

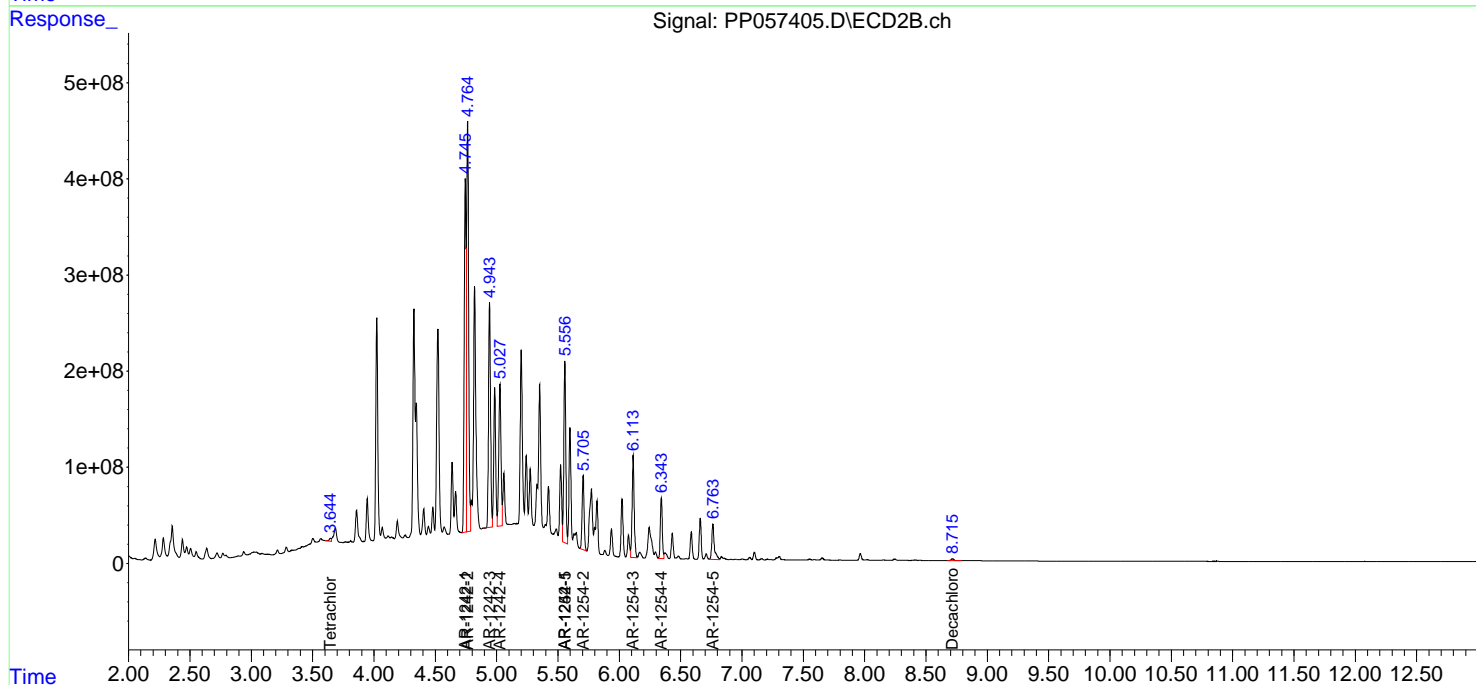
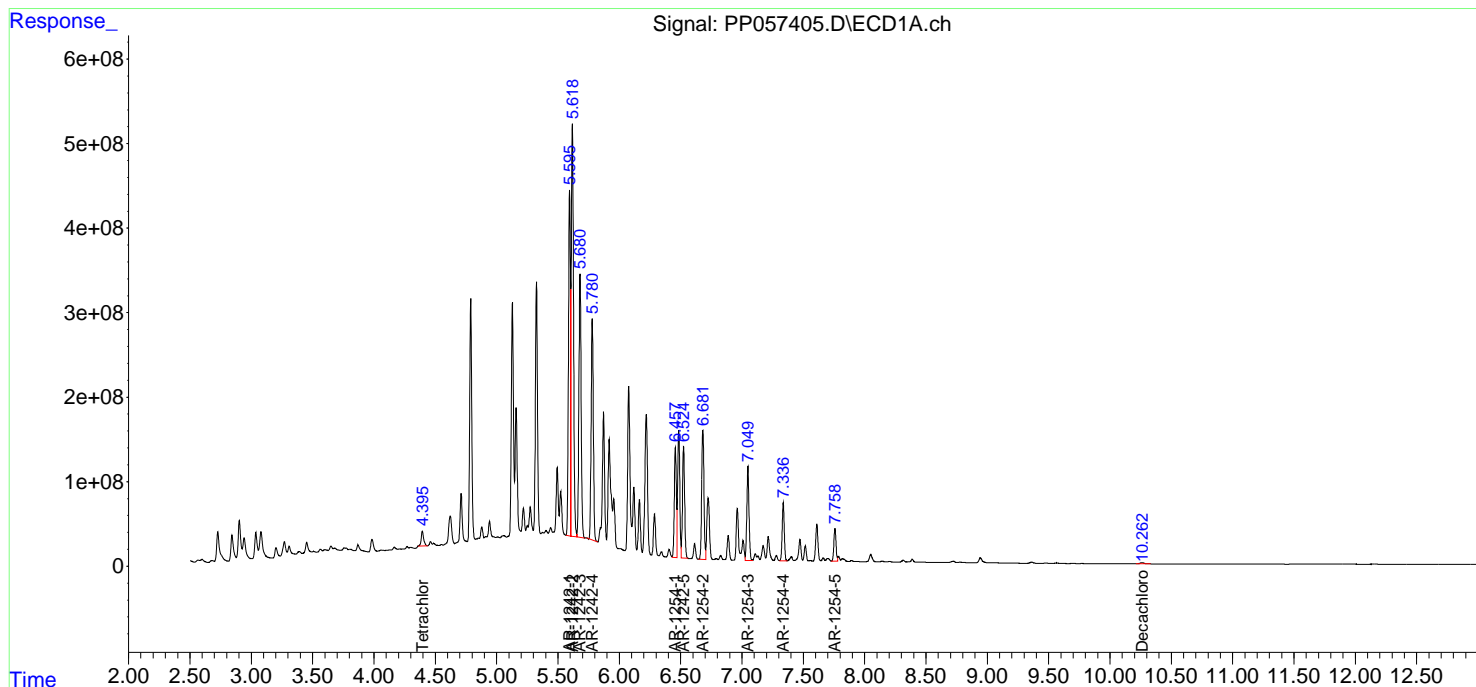
(f)=RT Delta > 1/2 Window (#)=Amounts differ by > 25% (m)=manual int.

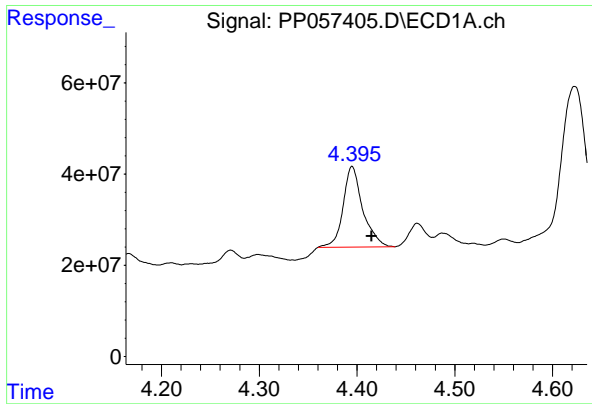
Data Path : Z:\pestpcbsrv\HPCHEM1\ECD_P\Data\PP050223\
 Data File : PP057405.D
 Signal(s) : Signal #1: ECD1A.ch Signal #2: ECD2B.ch
 Acq On : 02 May 2023 17:16
 Operator : YP\AJ
 Sample : 02566-05
 Misc :
 ALS Vial : 16 Sample Multiplier: 1

Instrument :
 ECD_P
 ClientSampleId :
 AUD-1989

Integration File signal 1: autoint1.e
 Integration File signal 2: autoint2.e
 Quant Time: May 03 04:35:08 2023
 Quant Method : Z:\pestpcbsrv\HPCHEM1\ECD_P\methods\PP050123.M
 Quant Title : GC EXTRACTABLES
 QLast Update : Mon May 01 18:39:24 2023
 Response via : Initial Calibration
 Integrator: ChemStation

Volume Inj. : 2 µl
 Signal #1 Phase : ZB-MR1 Signal #2 Phase: ZB-MR2
 Signal #1 Info : 30Mx0.32mmx 0.50µ Signal #2 Info : 30M x 0.32mm x 0.25µm

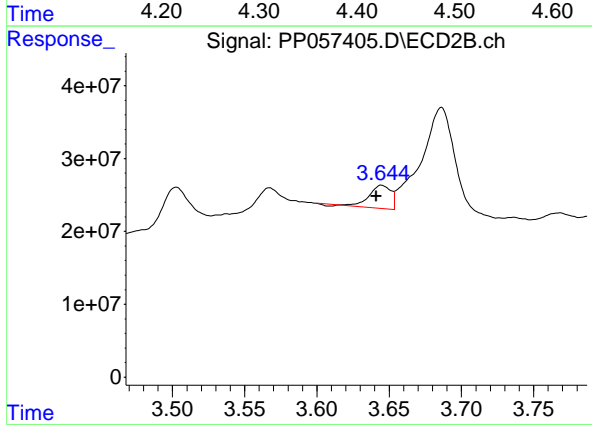




#1 Tetrachloro-m-xylene

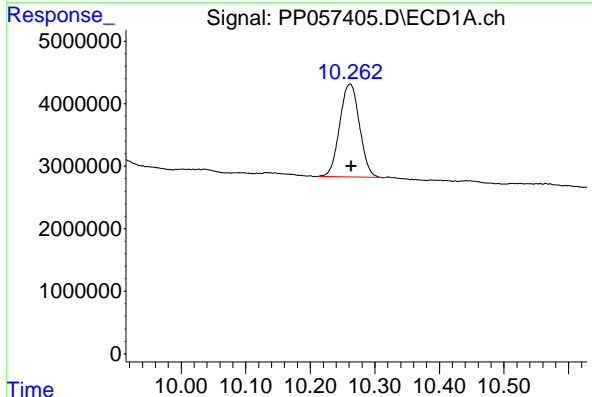
R.T.: 4.395 min
 Delta R.T.: -0.020 min
 Response: 246474512
 Conc: 104.66 ng/ml

Instrument :
 ECD_P
 ClientSampleId :
 AUD-1989



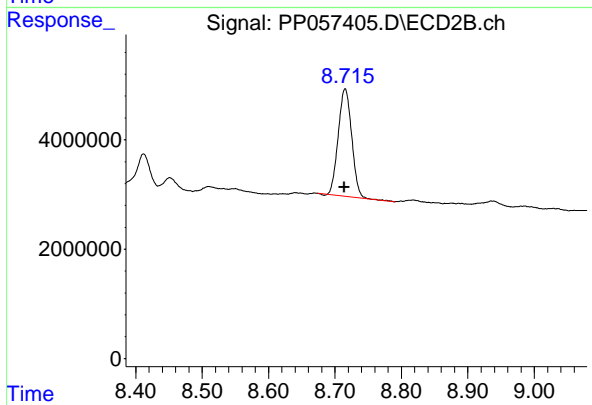
#1 Tetrachloro-m-xylene

R.T.: 3.645 min
 Delta R.T.: 0.004 min
 Response: 32229313
 Conc: 18.18 ng/ml



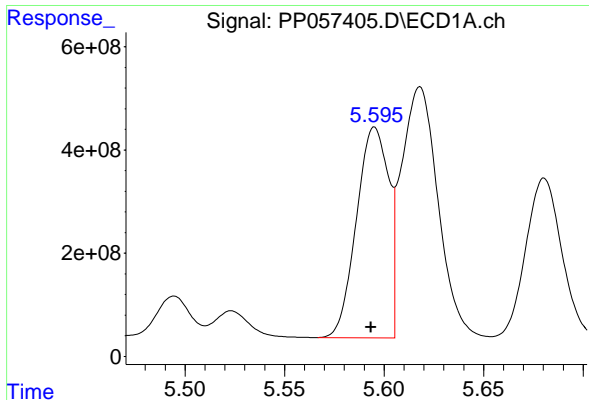
#2 Decachlorobiphenyl

R.T.: 10.261 min
 Delta R.T.: -0.002 min
 Response: 31669544
 Conc: 19.20 ng/ml



#2 Decachlorobiphenyl

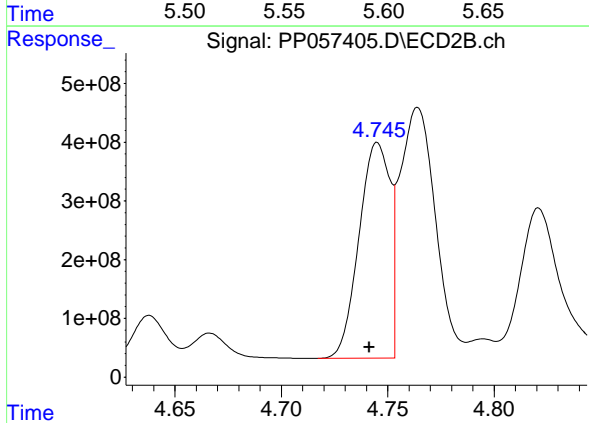
R.T.: 8.715 min
 Delta R.T.: 0.001 min
 Response: 27614084
 Conc: 14.07 ng/ml



#16 AR-1242-1

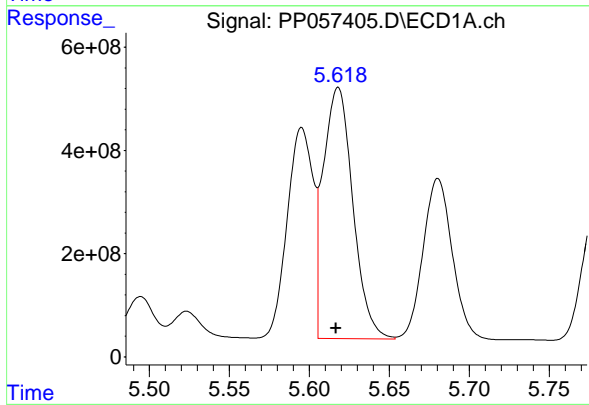
R.T.: 5.595 min
 Delta R.T.: 0.002 min
 Response: 4592217558
 Conc: 85005.29 ng/ml

Instrument :
 ECD_P
 ClientSampleId :
 AUD-1989



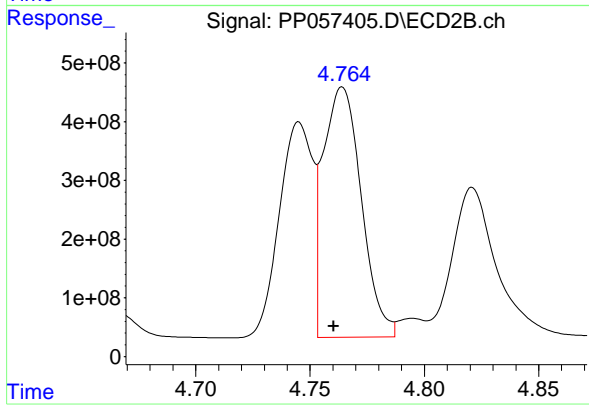
#16 AR-1242-1

R.T.: 4.745 min
 Delta R.T.: 0.004 min
 Response: 3717732878
 Conc: 75452.97 ng/ml



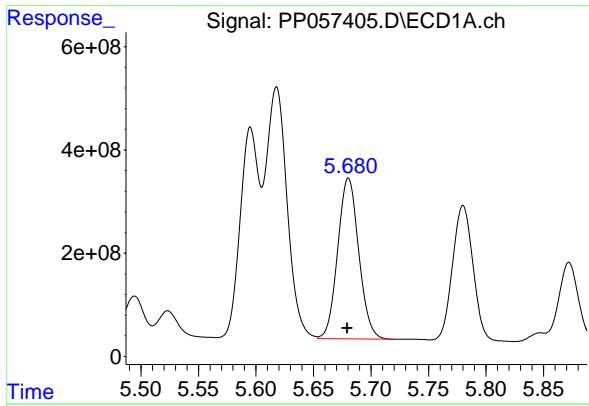
#17 AR-1242-2

R.T.: 5.618 min
 Delta R.T.: 0.001 min
 Response: 6282361929
 Conc: 79841.78 ng/ml



#17 AR-1242-2

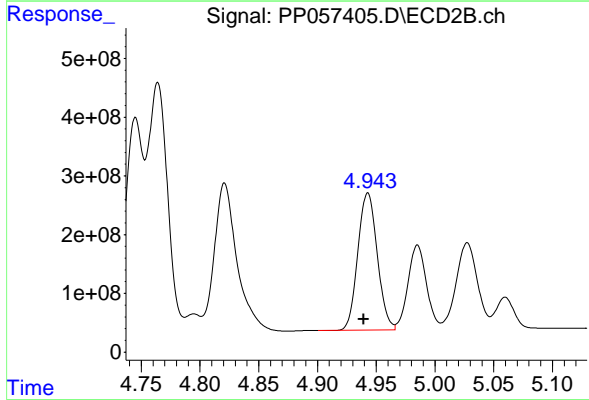
R.T.: 4.764 min
 Delta R.T.: 0.004 min
 Response: 4949519185
 Conc: 72324.45 ng/ml



#18 AR-1242-3

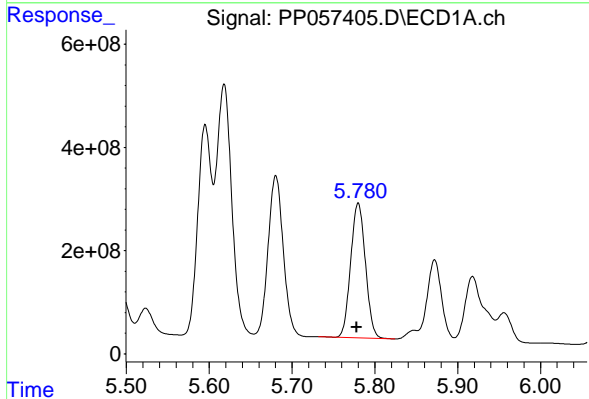
R.T.: 5.680 min
 Delta R.T.: 0.001 min
 Response: 3959187851
 Conc: 80571.39 ng/ml

Instrument :
 ECD_P
 ClientSampleId :
 AUD-1989



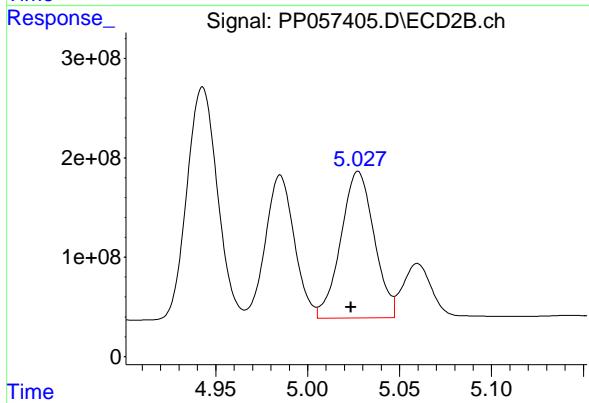
#18 AR-1242-3

R.T.: 4.943 min
 Delta R.T.: 0.004 min
 Response: 2693206127
 Conc: 70632.53 ng/ml



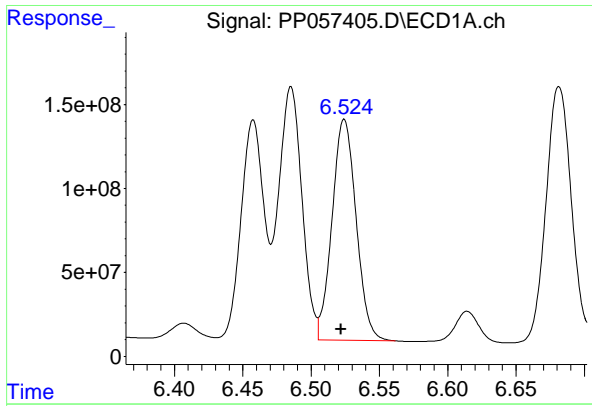
#19 AR-1242-4

R.T.: 5.780 min
 Delta R.T.: 0.002 min
 Response: 3230158441
 Conc: 82310.66 ng/ml



#19 AR-1242-4

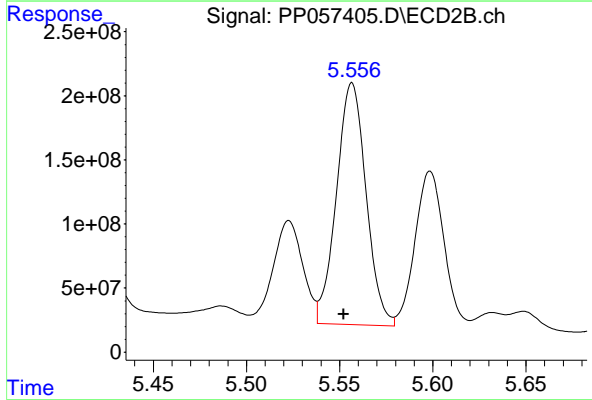
R.T.: 5.027 min
 Delta R.T.: 0.004 min
 Response: 1860638278
 Conc: 43701.93 ng/ml



#20 AR-1242-5

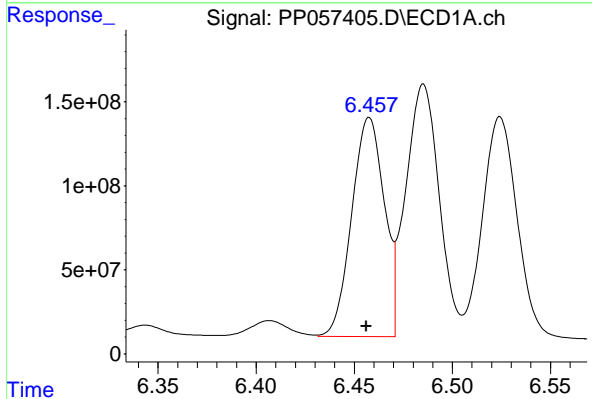
R.T.: 6.524 min
 Delta R.T.: 0.002 min
 Response: 1599634914
 Conc: 46604.68 ng/ml

Instrument : ECD_P
 ClientSampleId : AUD-1989



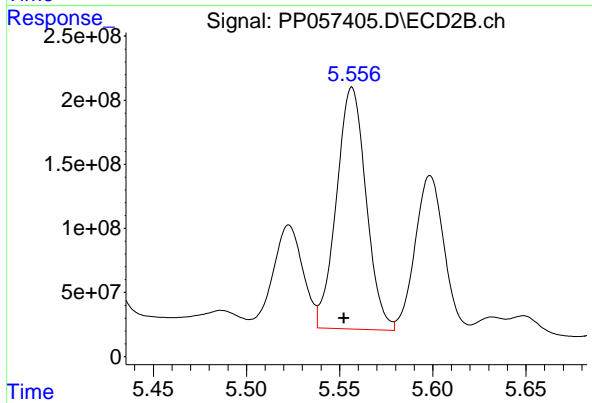
#20 AR-1242-5

R.T.: 5.557 min
 Delta R.T.: 0.005 min
 Response: 2086696523
 Conc: 43880.48 ng/ml



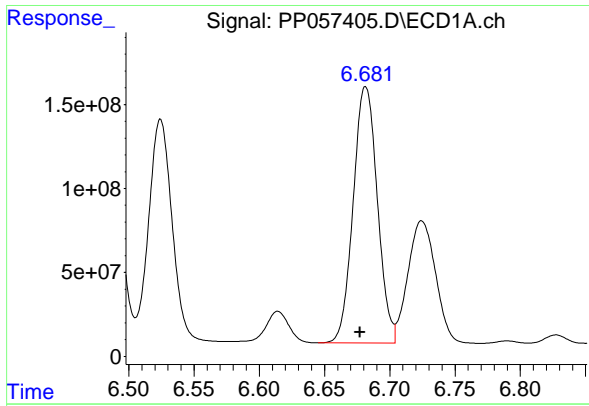
#26 AR-1254-1

R.T.: 6.458 min
 Delta R.T.: 0.001 min
 Response: 1506463313
 Conc: 18701.79 ng/ml



#26 AR-1254-1

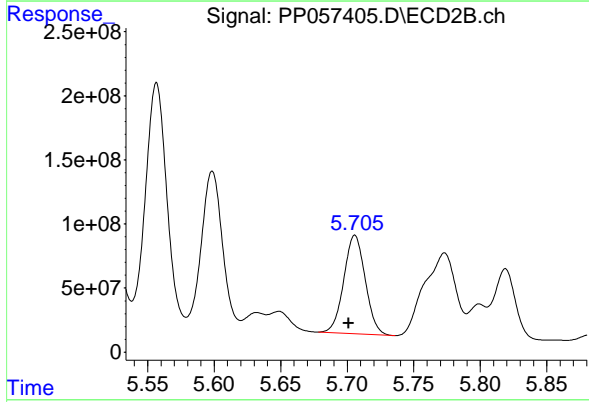
R.T.: 5.557 min
 Delta R.T.: 0.004 min
 Response: 2086696523
 Conc: 19349.69 ng/ml



#27 AR-1254-2

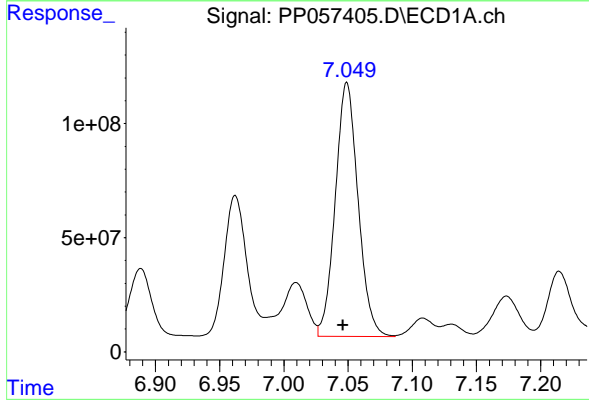
R.T.: 6.681 min
 Delta R.T.: 0.004 min
 Response: 1970351083
 Conc: 16998.63 ng/ml

Instrument :
 ECD_P
 ClientSampleId :
 AUD-1989



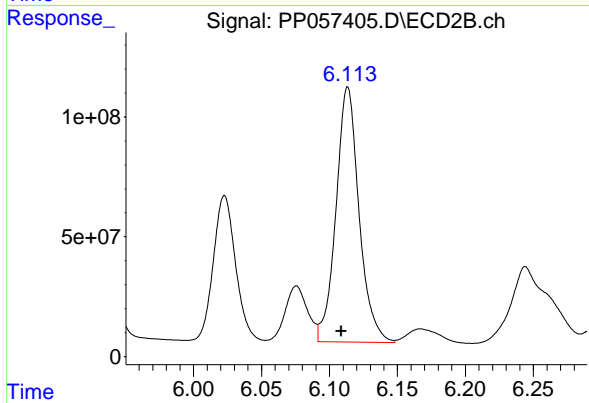
#27 AR-1254-2

R.T.: 5.706 min
 Delta R.T.: 0.005 min
 Response: 863682508
 Conc: 9008.69 ng/ml



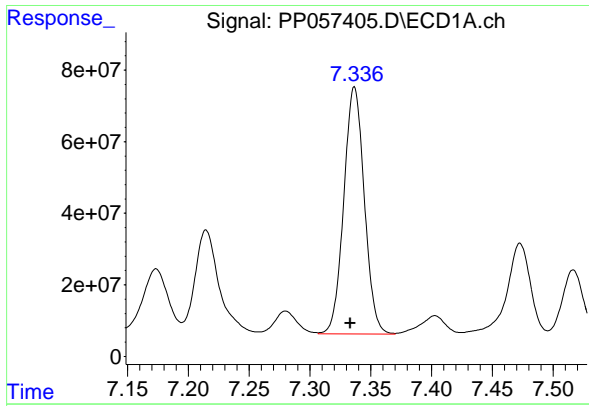
#28 AR-1254-3

R.T.: 7.049 min
 Delta R.T.: 0.003 min
 Response: 1372995771
 Conc: 12537.79 ng/ml



#28 AR-1254-3

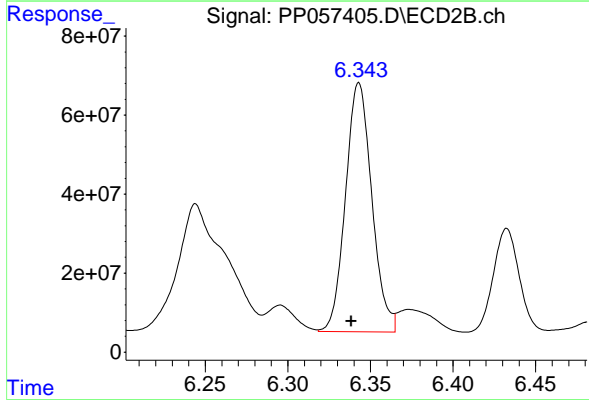
R.T.: 6.113 min
 Delta R.T.: 0.005 min
 Response: 1259025792
 Conc: 8372.72 ng/ml



#29 AR-1254-4

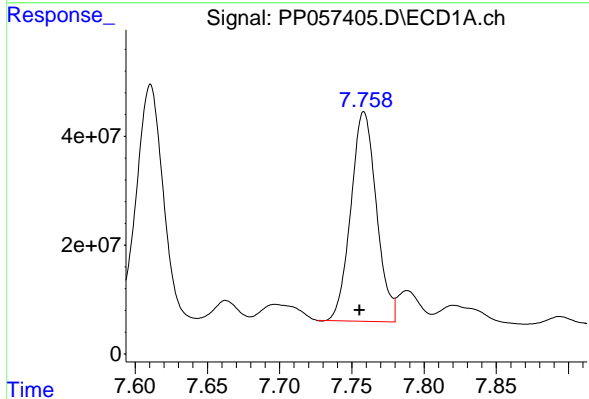
R.T.: 7.337 min
 Delta R.T.: 0.003 min
 Response: 812315728
 Conc: 12836.78 ng/ml

Instrument :
 ECD_P
 ClientSampleId :
 AUD-1989



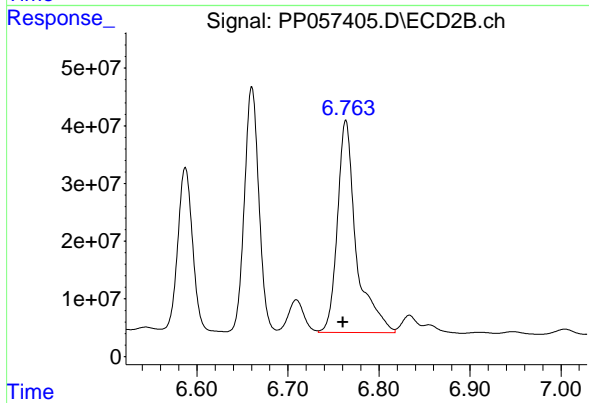
#29 AR-1254-4

R.T.: 6.343 min
 Delta R.T.: 0.005 min
 Response: 699023671
 Conc: 8846.51 ng/ml



#30 AR-1254-5

R.T.: 7.758 min
 Delta R.T.: 0.003 min
 Response: 474282116
 Conc: 6321.53 ng/ml



#30 AR-1254-5

R.T.: 6.764 min
 Delta R.T.: 0.003 min
 Response: 529790460
 Conc: 4171.11 ng/ml