

Data Path : Z:\pestpcbsrv\HPCHEM1\ECD_P\Data\PP050225\
 Data File : PP071751.D
 Signal(s) : Signal #1: ECD1A.ch Signal #2: ECD2B.ch
 Acq On : 02 May 2025 18:31
 Operator : YP\AJ
 Sample : Q1932-03
 Misc :
 ALS Vial : 17 Sample Multiplier: 1

Instrument :
 ECD_P
ClientSampleId :
 COMP-5

Manual Integrations
APPROVED
 Reviewed By :Yogesh Patel 05/05/2025
 Supervised By :mohammad ahmed 05/06/2025

Integration File signal 1: autoint1.e
 Integration File signal 2: autoint2.e
 Quant Time: May 03 00:18:02 2025
 Quant Method : Z:\pestpcbsrv\HPCHEM1\ECD_P\methods\PP042225.M
 Quant Title : GC EXTRACTABLES
 QLast Update : Wed Apr 23 05:02:06 2025
 Response via : Initial Calibration
 Integrator: ChemStation

Volume Inj. : 2 µl
 Signal #1 Phase : ZB-MR1 Signal #2 Phase: ZB-MR2
 Signal #1 Info : 30Mx0.32mmx 0.50µ Signal #2 Info : 30M x 0.32mm x 0.25µm

Compound	RT#1	RT#2	Resp#1	Resp#2	ng/ml	ng/ml

System Monitoring Compounds						
1) SA Tetrachlo...	4.510	3.810	29202671	24095880	14.729	17.106
2) SA Decachlor...	10.227	8.840	27296240	19056923	18.851	21.728
Target Compounds						
26) L6 AR-1254-1	6.535	5.697	1990833	2322484	24.293m	25.410
27) L6 AR-1254-2	6.727	5.845	2769664	2265817	21.795m	28.786 #
28) L6 AR-1254-3	7.093	6.249	4481662	4463346	35.075	37.663
29) L6 AR-1254-4	7.376	6.477	6331657	5216515	53.880	67.602 #
30) L6 AR-1254-5	7.792	6.895	4340261	5362221	40.288	52.847 #

(f)=RT Delta > 1/2 Window (#)=Amounts differ by > 25% (m)=manual int.

Data Path : Z:\pestpcbsrv\HPCHEM1\ECD_P\Data\PP050225\
 Data File : PP071751.D
 Signal(s) : Signal #1: ECD1A.ch Signal #2: ECD2B.ch
 Acq On : 02 May 2025 18:31
 Operator : YP\AJ
 Sample : Q1932-03
 Misc :
 ALS Vial : 17 Sample Multiplier: 1

Instrument :

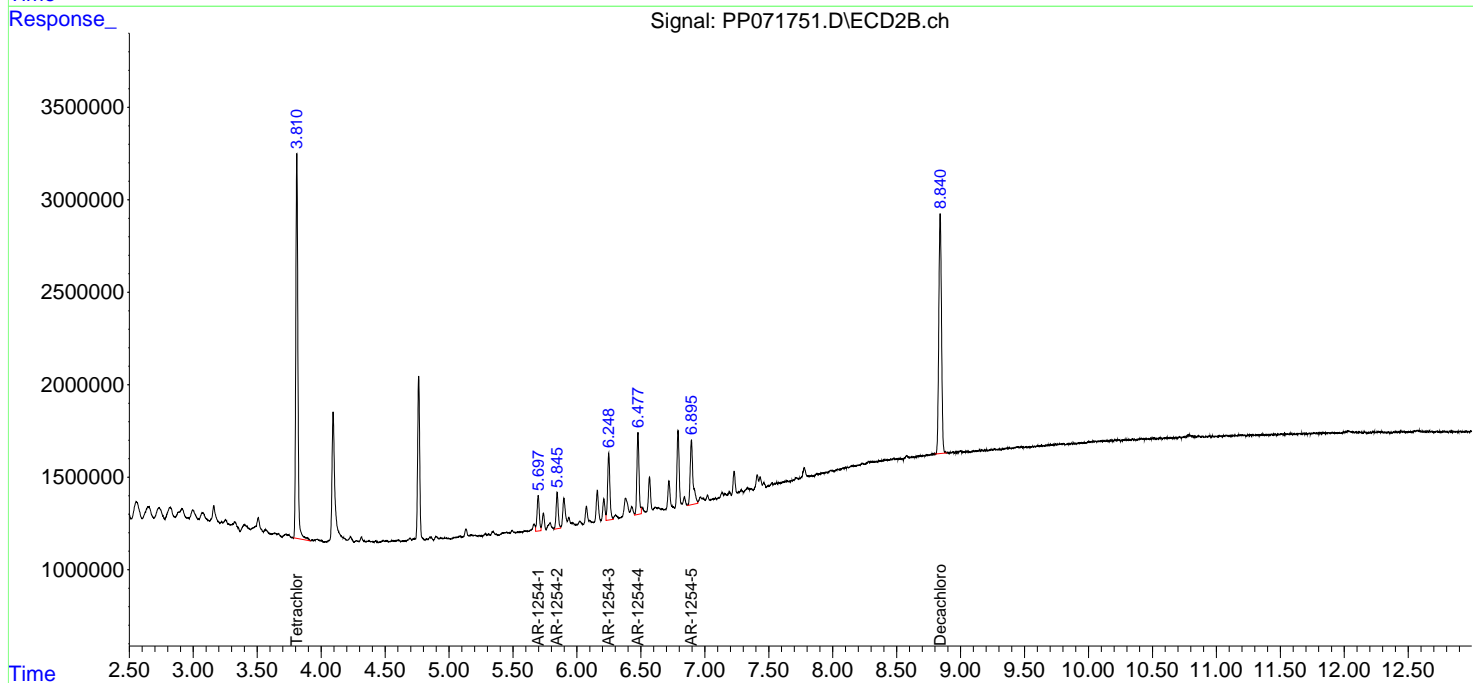
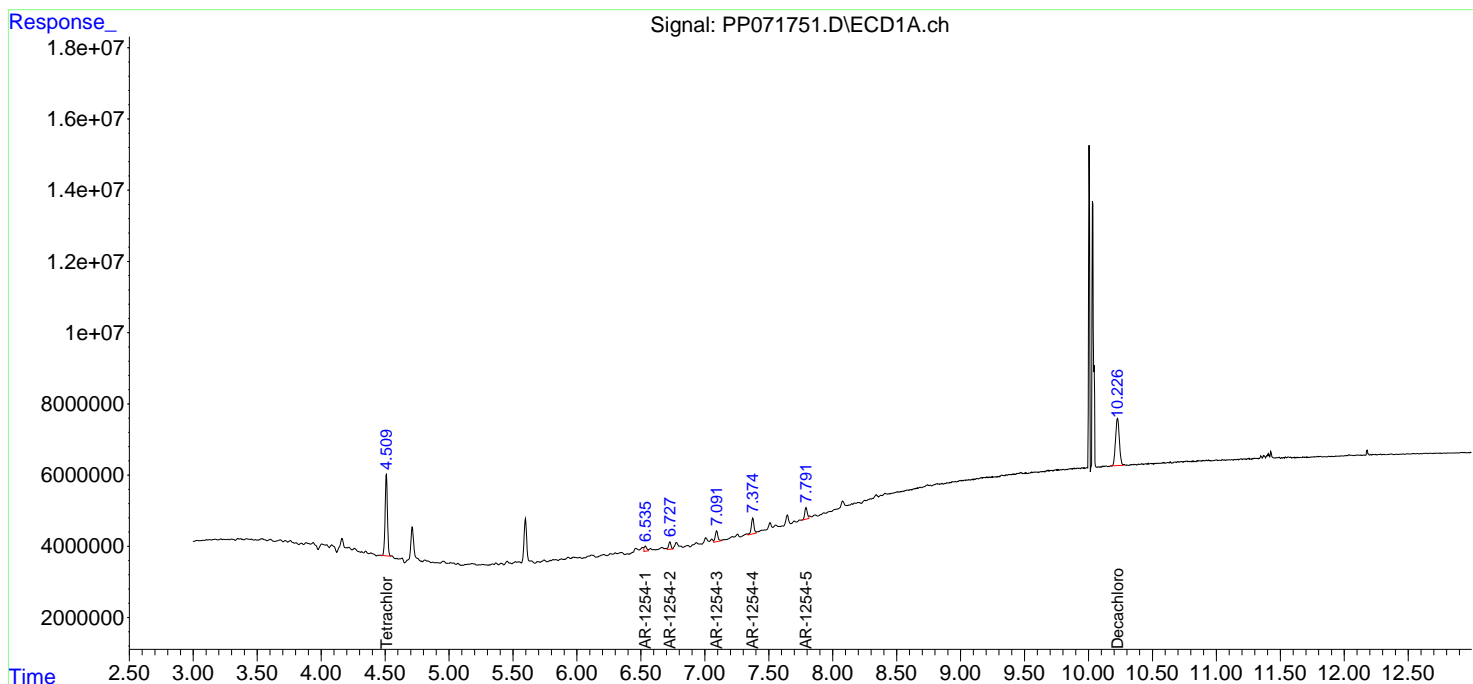
ECD_P
 ClientSampleId :
 COMP-5

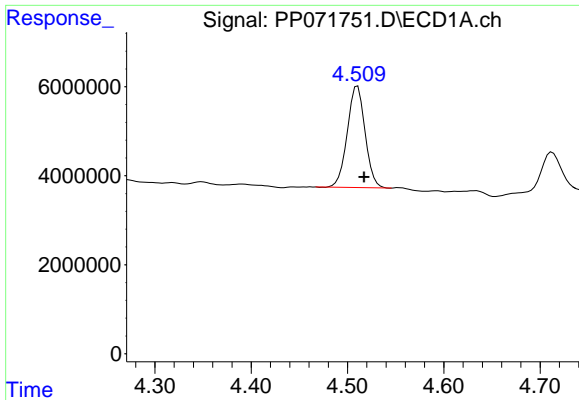
**Manual Integrations
 APPROVED**

Reviewed By :Yogesh Patel 05/05/2025
 Supervised By :mohammad ahmed 05/06/2025

Integration File signal 1: autoint1.e
 Integration File signal 2: autoint2.e
 Quant Time: May 03 00:18:02 2025
 Quant Method : Z:\pestpcbsrv\HPCHEM1\ECD_P\methods\PP042225.M
 Quant Title : GC EXTRACTABLES
 QLast Update : Wed Apr 23 05:02:06 2025
 Response via : Initial Calibration
 Integrator: ChemStation

Volume Inj. : 2 µl
 Signal #1 Phase : ZB-MR1 Signal #2 Phase: ZB-MR2
 Signal #1 Info : 30Mx0.32mmx 0.50µ Signal #2 Info : 30M x 0.32mm x 0.25µm





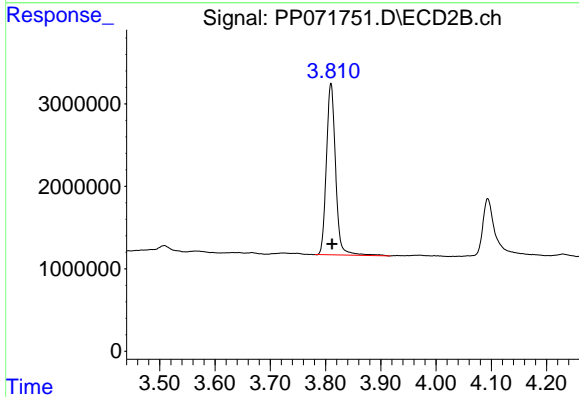
#1 Tetrachloro-m-xylene

R.T.: 4.510 min
 Delta R.T.: -0.007 min
 Response: 29202671
 Conc: 14.73 ng/ml

Instrument :
 ECD_P
 ClientSampleId :
 COMP-5

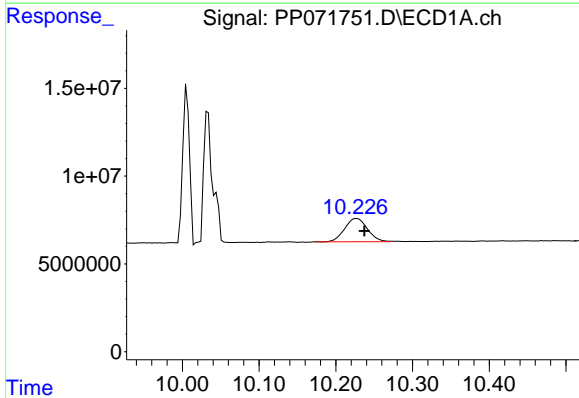
Manual Integrations
 APPROVED

Reviewed By :Yogesh Patel 05/05/2025
 Supervised By :mohammad ahmed 05/06/2025



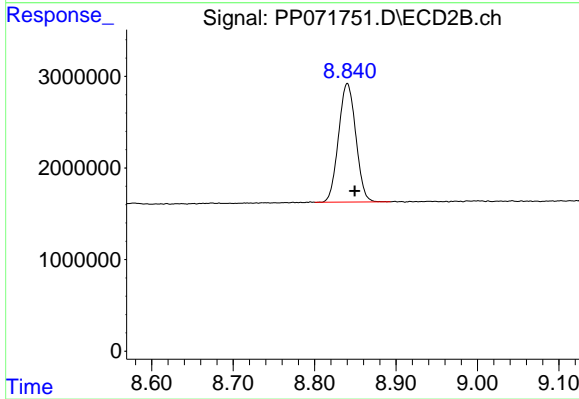
#1 Tetrachloro-m-xylene

R.T.: 3.810 min
 Delta R.T.: -0.002 min
 Response: 24095880
 Conc: 17.11 ng/ml



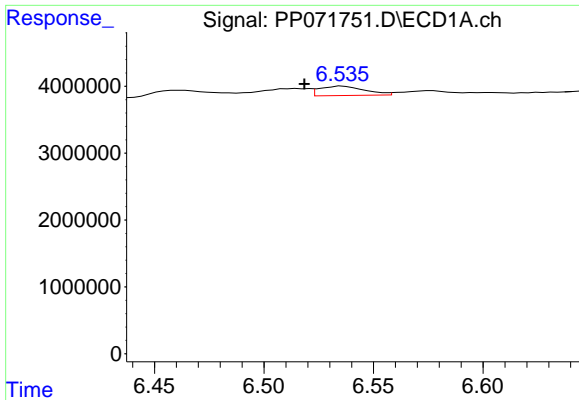
#2 Decachlorobiphenyl

R.T.: 10.227 min
 Delta R.T.: -0.010 min
 Response: 27296240
 Conc: 18.85 ng/ml



#2 Decachlorobiphenyl

R.T.: 8.840 min
 Delta R.T.: -0.009 min
 Response: 19056923
 Conc: 21.73 ng/ml



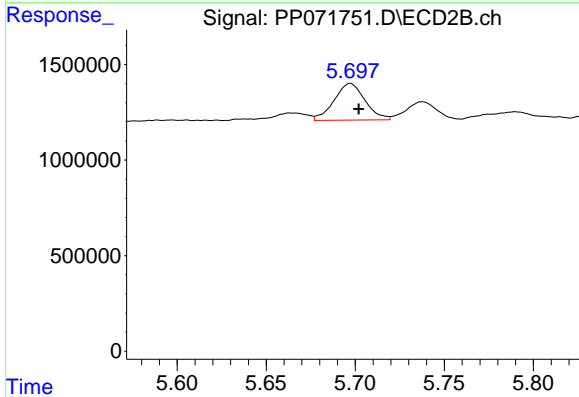
#26 AR-1254-1

R.T.: 6.535 min
 Delta R.T.: 0.016 min
 Response: 1990833
 Conc: 24.29 ng/ml

Instrument :
 ECD_P
 ClientSampleId :
 COMP-5

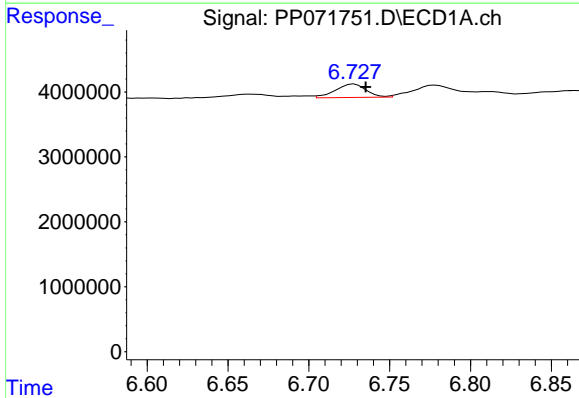
Manual Integrations
 APPROVED

Reviewed By :Yogesh Patel 05/05/2025
 Supervised By :mohammad ahmed 05/06/2025



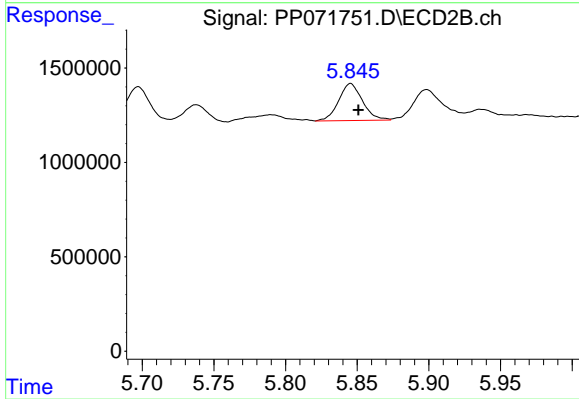
#26 AR-1254-1

R.T.: 5.697 min
 Delta R.T.: -0.005 min
 Response: 2322484
 Conc: 25.41 ng/ml



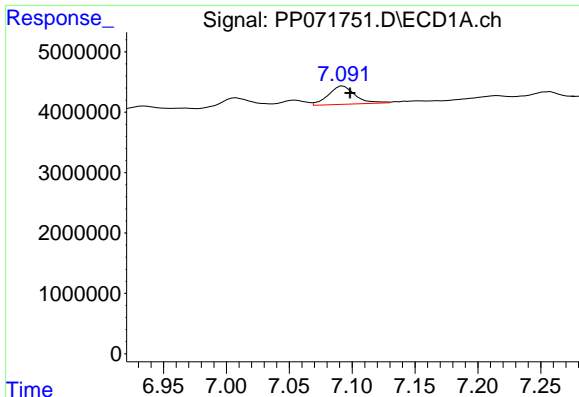
#27 AR-1254-2

R.T.: 6.727 min
 Delta R.T.: -0.009 min
 Response: 2769664
 Conc: 21.80 ng/ml m



#27 AR-1254-2

R.T.: 5.845 min
 Delta R.T.: -0.005 min
 Response: 2265817
 Conc: 28.79 ng/ml



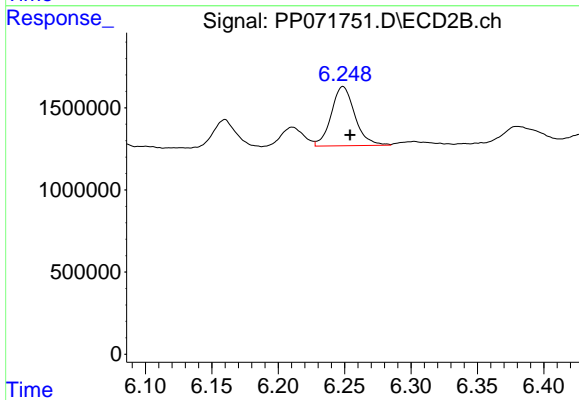
#28 AR-1254-3

R.T.: 7.093 min
 Delta R.T.: -0.006 min
 Response: 4481662
 Conc: 35.07 ng/ml

Instrument :
 ECD_P
 ClientSampleId :
 COMP-5

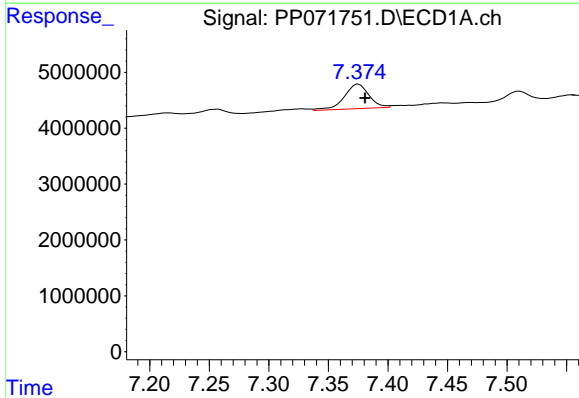
Manual Integrations
 APPROVED

Reviewed By :Yogesh Patel 05/05/2025
 Supervised By :mohammad ahmed 05/06/2025



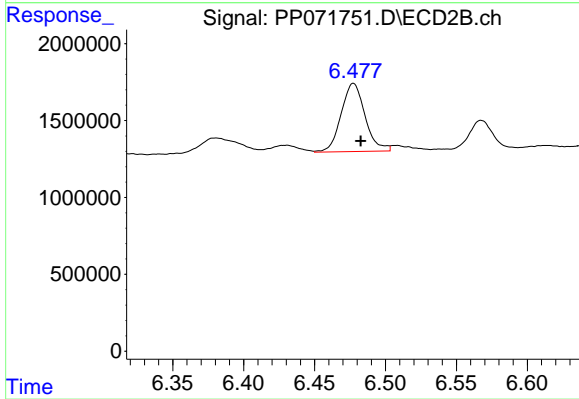
#28 AR-1254-3

R.T.: 6.249 min
 Delta R.T.: -0.005 min
 Response: 4463346
 Conc: 37.66 ng/ml



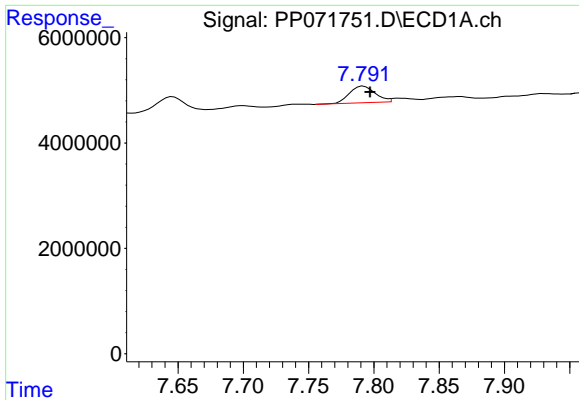
#29 AR-1254-4

R.T.: 7.376 min
 Delta R.T.: -0.005 min
 Response: 6331657
 Conc: 53.88 ng/ml



#29 AR-1254-4

R.T.: 6.477 min
 Delta R.T.: -0.005 min
 Response: 5216515
 Conc: 67.60 ng/ml



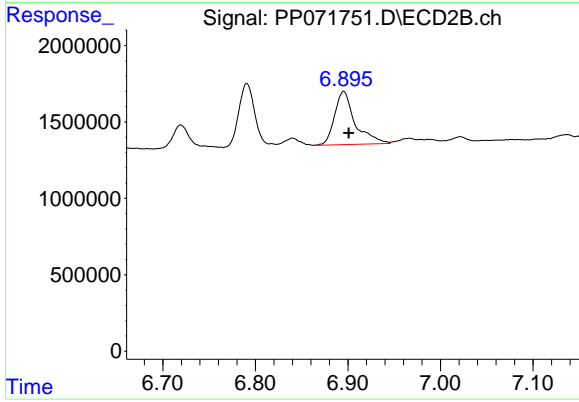
#30 AR-1254-5

R.T.: 7.792 min
 Delta R.T.: -0.005 min
 Response: 4340261
 Conc: 40.29 ng/ml

Instrument :
 ECD_P
 ClientSampleId :
 COMP-5

Manual Integrations
 APPROVED

Reviewed By :Yogesh Patel 05/05/2025
 Supervised By :mohammad ahmed 05/06/2025



#30 AR-1254-5

R.T.: 6.895 min
 Delta R.T.: -0.005 min
 Response: 5362221
 Conc: 52.85 ng/ml