

Data Path : Z:\pestpcbsrv\HPCHEM1\ECD\_P\Data\PP050322\  
 Data File : PP046961.D  
 Signal(s) : Signal #1: ECD1A.ch Signal #2: ECD2B.ch  
 Acq On : 04 May 2022 03:31  
 Operator : YP\AJ  
 Sample : N2644-03  
 Misc :  
 ALS Vial : 8 Sample Multiplier: 1

**Instrument :**  
 ECD\_P  
**ClientSampleId :**  
 OILY-RAGS-DEBRIS

Integration File signal 1: autoint1.e  
 Integration File signal 2: autoint2.e  
 Quant Time: May 04 06:52:06 2022  
 Quant Method : Z:\pestpcbsrv\HPCHEM1\ECD\_P\methods\PP042222.M  
 Quant Title : GC EXTRACTABLES  
 QLast Update : Tue May 03 11:45:42 2022  
 Response via : Initial Calibration  
 Integrator: ChemStation

Volume Inj. : 2 µl  
 Signal #1 Phase : ZB-MR1 Signal #2 Phase: ZB-MR2  
 Signal #1 Info : 30Mx0.32mmx 0.50µ Signal #2 Info : 30M x 0.32mm x 0.25µm

Compound	RT#1	RT#2	Resp#1	Resp#2	ng/ml	ng/ml
-----						
System Monitoring Compounds						
1) SA Tetrachlo...	3.862	3.127	31361546	49976770	12.992	15.235
2) SA Decachlor...	9.941	8.445	27850350	40498839	18.926	16.978

Target Compounds

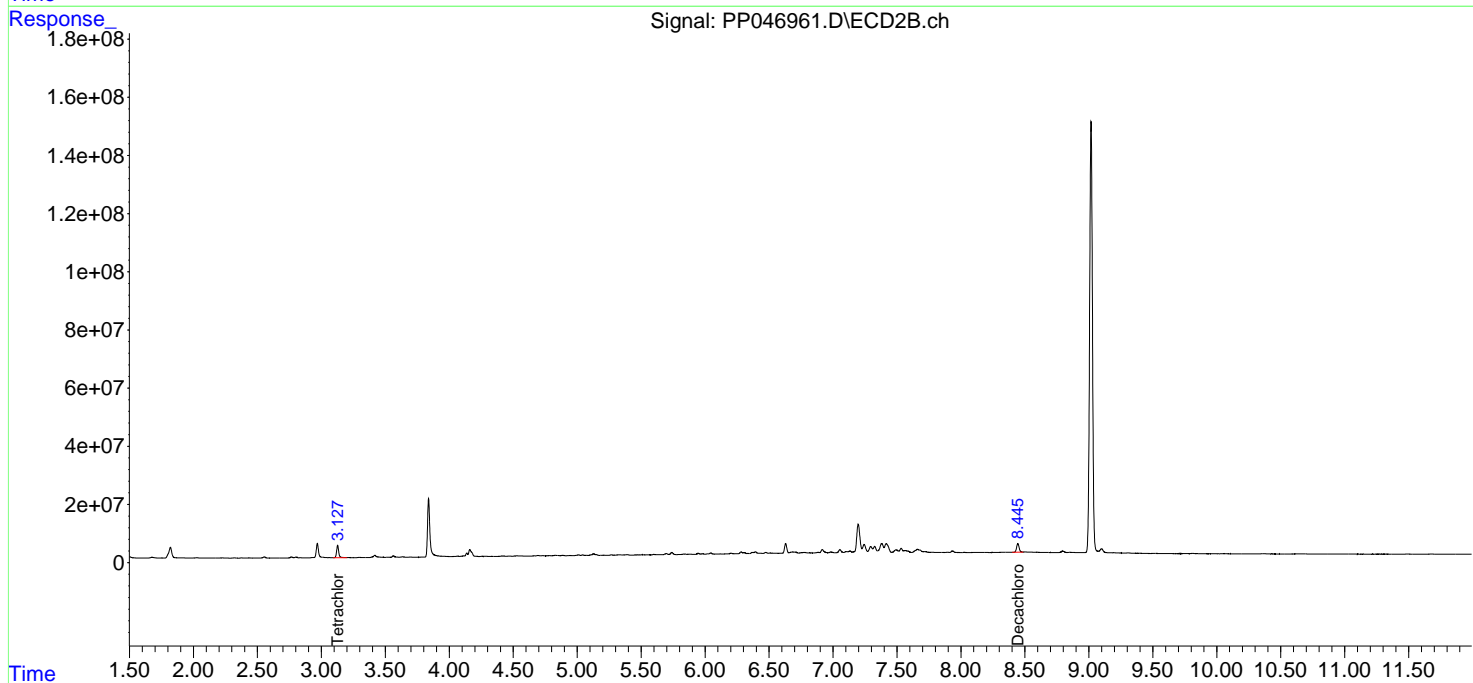
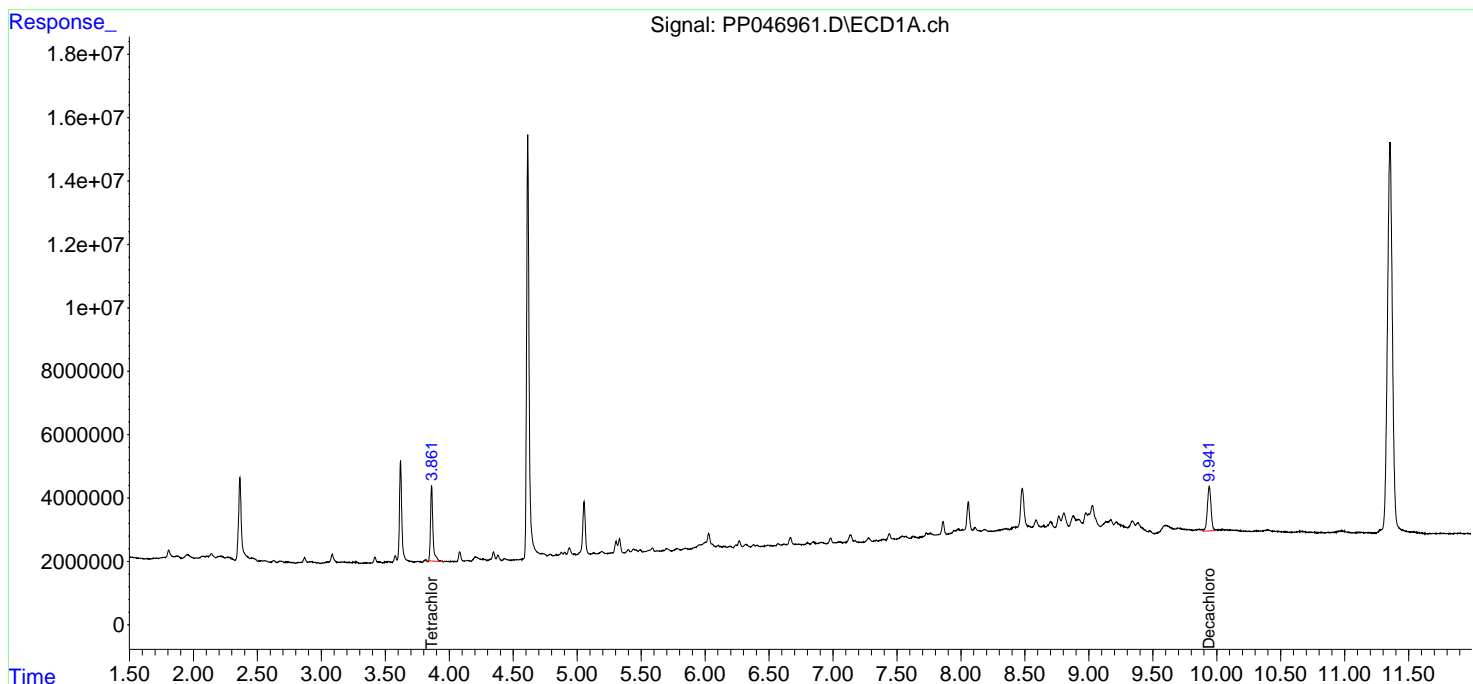
(f)=RT Delta > 1/2 Window (#)=Amounts differ by > 25% (m)=manual int.

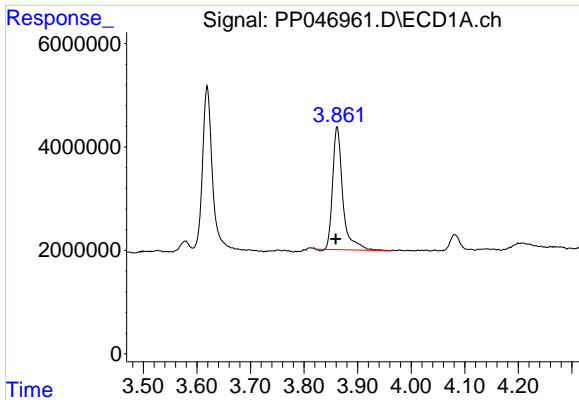
Data Path : Z:\pestpcbsrv\HPCHEM1\ECD\_P\Data\PP050322\  
 Data File : PP046961.D  
 Signal(s) : Signal #1: ECD1A.ch Signal #2: ECD2B.ch  
 Acq On : 04 May 2022 03:31  
 Operator : YP\AJ  
 Sample : N2644-03  
 Misc :  
 ALS Vial : 8 Sample Multiplier: 1

**Instrument :**  
 ECD\_P  
**ClientSampleId :**  
 OILY-RAGS-DEBRIS

Integration File signal 1: autoint1.e  
 Integration File signal 2: autoint2.e  
 Quant Time: May 04 06:52:06 2022  
 Quant Method : Z:\pestpcbsrv\HPCHEM1\ECD\_P\methods\PP042222.M  
 Quant Title : GC EXTRACTABLES  
 QLast Update : Tue May 03 11:45:42 2022  
 Response via : Initial Calibration  
 Integrator: ChemStation

Volume Inj. : 2 µl  
 Signal #1 Phase : ZB-MR1 Signal #2 Phase: ZB-MR2  
 Signal #1 Info : 30Mx0.32mmx 0.50µ Signal #2 Info : 30M x 0.32mm x 0.25µm

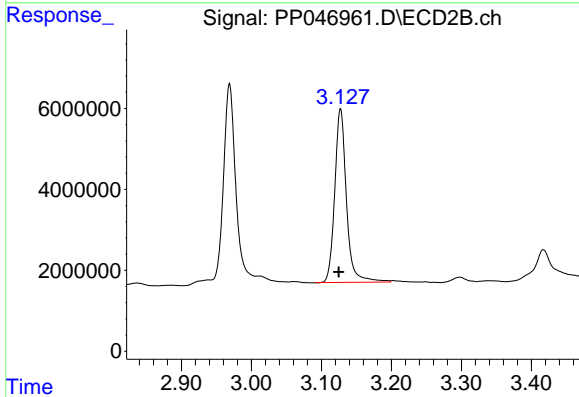




#1 Tetrachloro-m-xylene

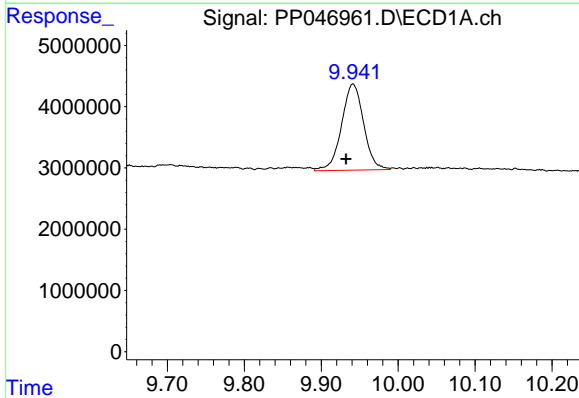
R.T.: 3.862 min  
 Delta R.T.: 0.003 min  
 Response: 31361546  
 Conc: 12.99 ng/ml

Instrument :  
 ECD\_P  
 ClientSampleId :  
 OILY-RAGS-DEBRIS



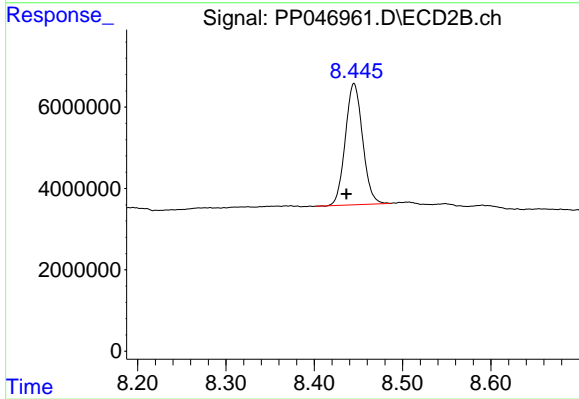
#1 Tetrachloro-m-xylene

R.T.: 3.127 min  
 Delta R.T.: 0.003 min  
 Response: 49976770  
 Conc: 15.24 ng/ml



#2 Decachlorobiphenyl

R.T.: 9.941 min  
 Delta R.T.: 0.009 min  
 Response: 27850350  
 Conc: 18.93 ng/ml



#2 Decachlorobiphenyl

R.T.: 8.445 min  
 Delta R.T.: 0.008 min  
 Response: 40498839  
 Conc: 16.98 ng/ml