

Data Path : Z:\pestpcbsrv\HPCHEM1\ECD_P\Data\PP050323\
 Data File : PP057437.D
 Signal(s) : Signal #1: ECD1A.ch Signal #2: ECD2B.ch
 Acq On : 03 May 2023 09:09
 Operator : YP\AJ
 Sample : AR1248CCC500
 Misc :
 ALS Vial : 5 Sample Multiplier: 1

Instrument :
 ECD_P
 ClientSampleId :
 AR1248CCC500

Integration File signal 1: autoint1.e
 Integration File signal 2: autoint2.e
 Quant Time: May 04 08:49:55 2023
 Quant Method : Z:\pestpcbsrv\HPCHEM1\ECD_P\methods\PP050323.M
 Quant Title : GC EXTRACTABLES
 QLast Update : Thu May 04 07:27:39 2023
 Response via : Initial Calibration
 Integrator: ChemStation

Volume Inj. : 2 µl
 Signal #1 Phase : ZB-MR1 Signal #2 Phase: ZB-MR2
 Signal #1 Info : 30Mx0.32mmx 0.50µ Signal #2 Info : 30M x 0.32mm x 0.25µm

Compound	RT#1	RT#2	Resp#1	Resp#2	ng/ml	ng/ml
System Monitoring Compounds						
1) SA Tetrachlo...	4.375	3.645	6551	82472627	0.003	40.717 #
2) SA Decachlor...	10.217	8.678	13429	20990	0.018	0.016
Target Compounds						
3) L1 AR-1016-1	5.600f	4.708f	20429291	108515	373.540	1.695 #
4) L1 AR-1016-2	5.600	4.746	20429291	18701647	252.432	211.352
5) L1 AR-1016-3	5.685f	4.946f	12490395	13324900	249.347	264.273
6) L1 AR-1016-4	5.784f	4.946f	13811584	13324900	342.553	330.852
7) L1 AR-1016-5	6.082f	5.203f	34826543	34982726	852.782	684.916
8) L2 AR-1221-1	4.625f	3.859f	329503	263845	13.189	10.750
9) L2 AR-1221-2	4.674f	3.918	21928	20364	1.186	1.090
10) L2 AR-1221-3	4.793f	4.026f	2079351	1702925	38.270	30.556
11) L3 AR-1232-1	4.793f	4.026f	2079351	1702925	51.203	41.064
12) L3 AR-1232-2	5.282f	4.746	124331	18701647	5.312	451.127 #
13) L3 AR-1232-3	5.600	4.946f	20429291	13324900	553.645	559.643
14) L3 AR-1232-4	5.784f	4.986f	13811584	28838751	761.458	1356.838 #
15) L3 AR-1232-5	5.876f	5.203f	32632945	34982726	2108.837	1471.155 #
16) L4 AR-1242-1	5.600f	4.708f	20429291	108515	473.108	2.140 #
17) L4 AR-1242-2	5.600	4.746	20429291	18701647	325.870	269.413
18) L4 AR-1242-3	5.685f	4.946f	12490395	13324900	317.940	328.908
19) L4 AR-1242-4	5.784f	4.986f	13811584	28838751	433.876	717.215 #
20) L4 AR-1242-5	6.489	5.524	31508130	18772394	1133.117	382.482 #
21) L5 AR-1248-1	5.600	4.708f	20429291	108515	529.093	2.376 #
22) L5 AR-1248-2	5.876	4.946f	32632945	13324900	554.922	208.482 #
23) L5 AR-1248-3	6.082	4.986f	34826543	28838751	561.896	428.030
24) L5 AR-1248-4	6.462	5.203f	25953479	34982726	462.820	442.627
25) L5 AR-1248-5	6.529	5.558f	29645504	46111904	532.067	617.925
26) L6 AR-1254-1	6.462f	5.524	25953479	18772394	423.488	187.067 #
27) L6 AR-1254-2	6.687f	5.707f	33468596	15592239	392.986	175.358 #
28) L6 AR-1254-3	7.015	6.078	7851606	9130126	98.286	65.194 #
29) L6 AR-1254-4	7.342f	6.347f	10675089	14461437	191.214	169.570
30) L6 AR-1254-5	7.764f	6.768f	3196008	4941295	52.546	37.783 #
31) L7 AR-1260-1	7.180	0.000	6884046	0	96.491	N.D. #
32) L7 AR-1260-2	7.478f	6.436f	3128987	2152749	48.522	20.249 #
33) L7 AR-1260-3	7.828	6.591f	1030417	2765846	24.836	26.571
34) L7 AR-1260-4	8.055	7.047	1581379	6930	31.164	0.094 #
35) L7 AR-1260-5	0.000	7.290	0	451311	N.D.	2.855 #
36) L8 AR-1262-1	7.828	6.837	1030417	749886	14.663	13.706
37) L8 AR-1262-2	0.000	7.047	0	6930	N.D.	0.063 #
38) L8 AR-1262-3	8.685	7.552f	16442	23747	0.228	0.284
39) L8 AR-1262-4	8.784	7.659f	179216	624394	3.308	4.161 #
40) L8 AR-1262-5	9.459	8.121	158134	28187	4.706	0.412 #
41) L9 AR-1268-1	8.685	7.552f	16442	23747	0.130	0.097 #

Data Path : Z:\pestpcbsrv\HPCHEM1\ECD_P\Data\PP050323\
 Data File : PP057437.D
 Signal(s) : Signal #1: ECD1A.ch Signal #2: ECD2B.ch
 Acq On : 03 May 2023 09:09
 Operator : YP\AJ
 Sample : AR1248CCC500
 Misc :
 ALS Vial : 5 Sample Multiplier: 1

Instrument :
 ECD_P
 ClientSampleId :
 AR1248CCC500

Integration File signal 1: autoint1.e
 Integration File signal 2: autoint2.e
 Quant Time: May 04 08:49:55 2023
 Quant Method : Z:\pestpcbsrv\HPCHEM1\ECD_P\methods\PP050323.M
 Quant Title : GC EXTRACTABLES
 QLast Update : Thu May 04 07:27:39 2023
 Response via : Initial Calibration
 Integrator: ChemStation

Volume Inj. : 2 µl
 Signal #1 Phase : ZB-MR1 Signal #2 Phase: ZB-MR2
 Signal #1 Info : 30Mx0.32mmx 0.50µ Signal #2 Info : 30M x 0.32mm x 0.25µm

	Compound	RT#1	RT#2	Resp#1	Resp#2	ng/ml	ng/ml
42)	L9 AR-1268-2	8.784	7.659f	179216	624394	1.640	2.857 #
43)	L9 AR-1268-3	9.003	7.873f	75967	305478	0.757	1.604 #
44)	L9 AR-1268-4	9.435	8.121	17476	28187	0.470	0.367
45)	L9 AR-1268-5	9.864	8.414f	126474	30749	0.495	0.061 #

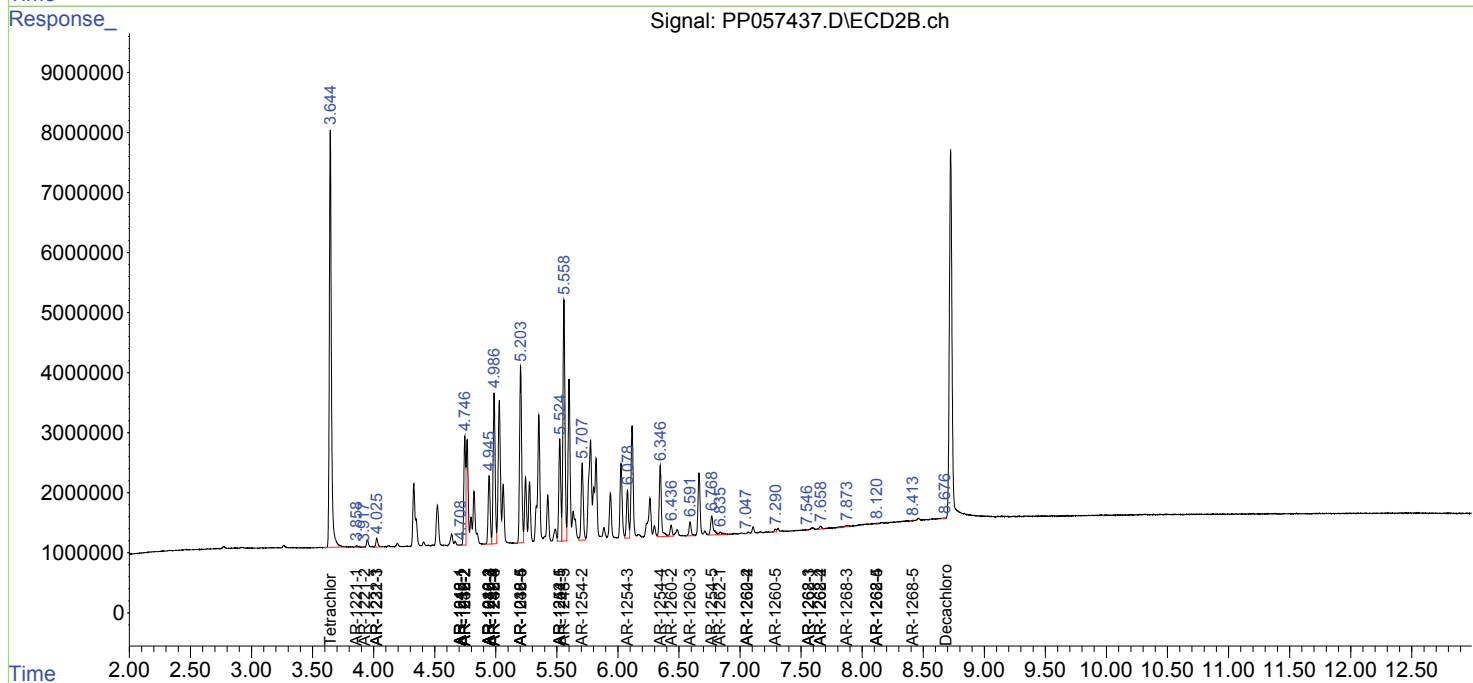
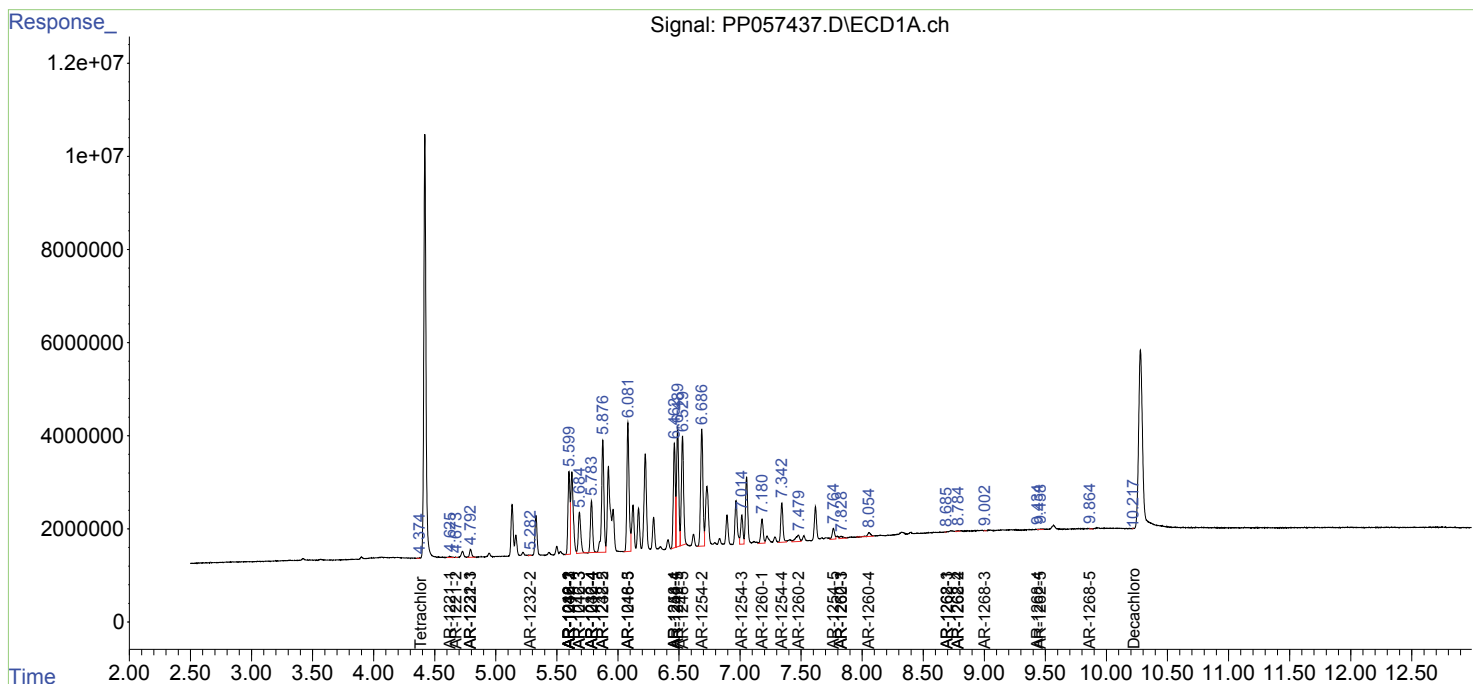
(f)=RT Delta > 1/2 Window (#)=Amounts differ by > 25% (m)=manual int.

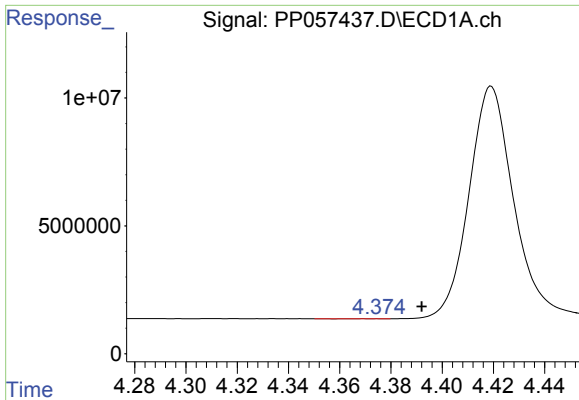
Data Path : Z:\pestpcbsrv\HPCHEM1\ECD_P\Data\PP050323\
 Data File : PP057437.D
 Signal(s) : Signal #1: ECD1A.ch Signal #2: ECD2B.ch
 Acq On : 03 May 2023 09:09
 Operator : YP\AJ
 Sample : AR1248CCC500
 Misc :
 ALS Vial : 5 Sample Multiplier: 1

Instrument :
 ECD_P
 ClientSampleId :
 AR1248CCC500

Integration File signal 1: autoint1.e
 Integration File signal 2: autoint2.e
 Quant Time: May 04 08:49:55 2023
 Quant Method : Z:\pestpcbsrv\HPCHEM1\ECD_P\methods\PP050323.M
 Quant Title : GC EXTRACTABLES
 QLast Update : Thu May 04 07:27:39 2023
 Response via : Initial Calibration
 Integrator: ChemStation

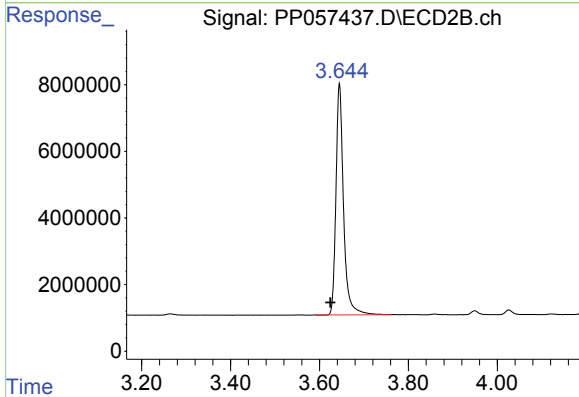
Volume Inj. : 2 µl
 Signal #1 Phase : ZB-MR1 Signal #2 Phase: ZB-MR2
 Signal #1 Info : 30Mx0.32mmx 0.50µ Signal #2 Info : 30M x 0.32mm x 0.25µm



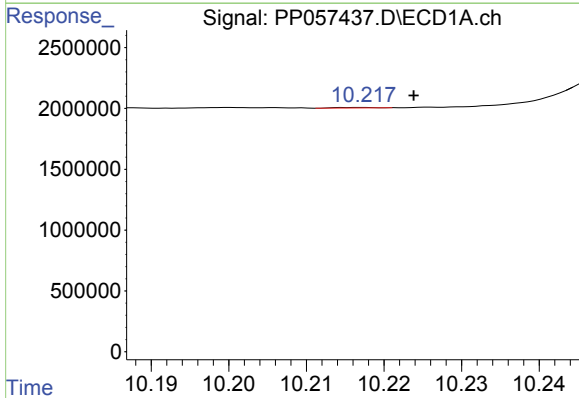


#1 Tetrachloro-m-xylene
 R.T.: 4.375 min
 Delta R.T.: -0.017 min
 Response: 6551
 Conc: 0.00 ng/ml

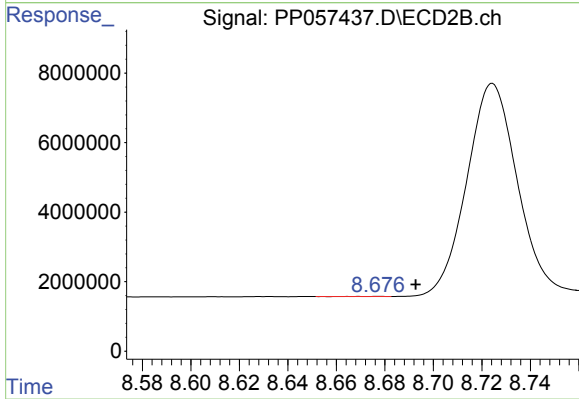
Instrument :
 ECD_P
 ClientSampleId :
 AR1248CCC500



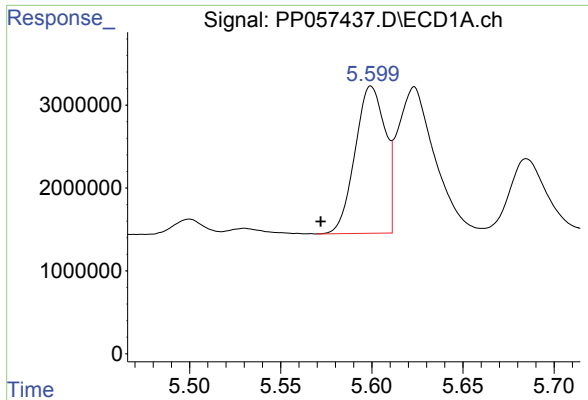
#1 Tetrachloro-m-xylene
 R.T.: 3.645 min
 Delta R.T.: 0.020 min
 Response: 82472627
 Conc: 40.72 ng/ml



#2 Decachlorobiphenyl
 R.T.: 10.217 min
 Delta R.T.: -0.007 min
 Response: 13429
 Conc: 0.02 ng/ml



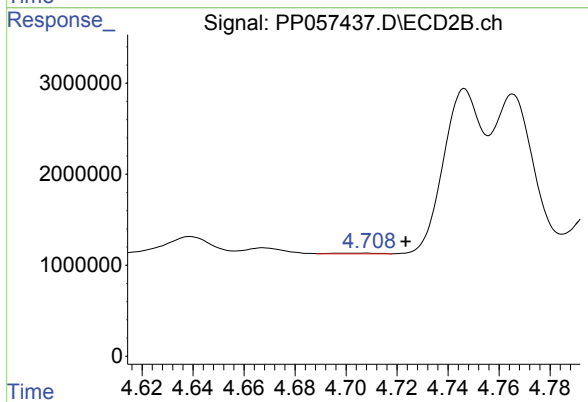
#2 Decachlorobiphenyl
 R.T.: 8.678 min
 Delta R.T.: -0.015 min
 Response: 20990
 Conc: 0.02 ng/ml



#3 AR-1016-1

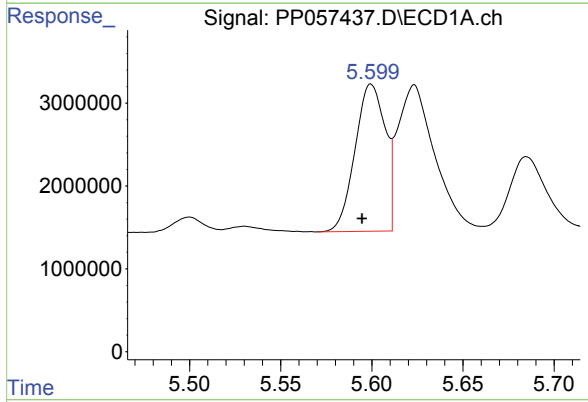
R.T.: 5.600 min
 Delta R.T.: 0.028 min
 Response: 20429291
 Conc: 373.54 ng/ml

Instrument :
 ECD_P
 ClientSampleId :
 AR1248CCC500



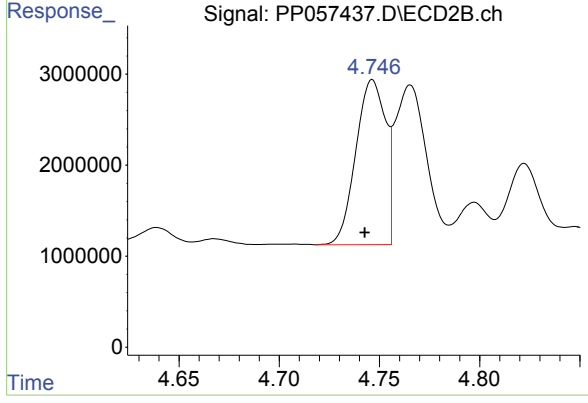
#3 AR-1016-1

R.T.: 4.708 min
 Delta R.T.: -0.016 min
 Response: 108515
 Conc: 1.70 ng/ml



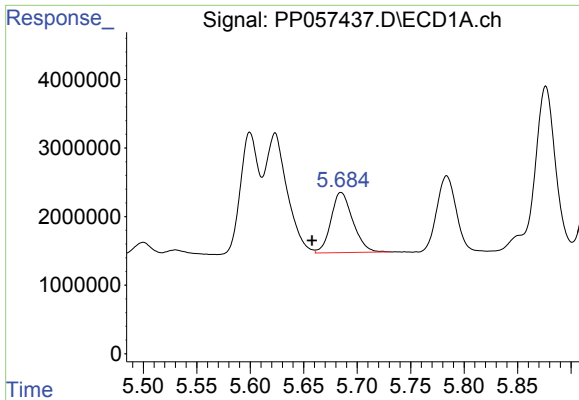
#4 AR-1016-2

R.T.: 5.600 min
 Delta R.T.: 0.005 min
 Response: 20429291
 Conc: 252.43 ng/ml



#4 AR-1016-2

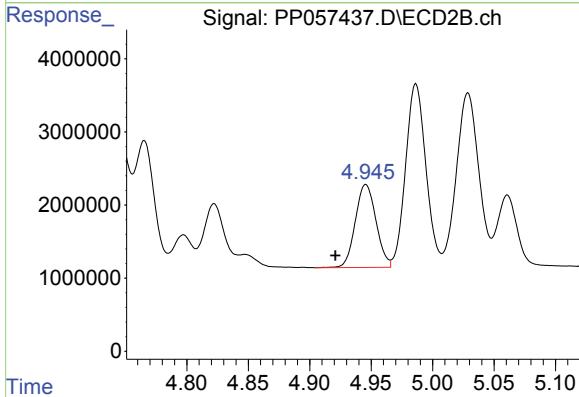
R.T.: 4.746 min
 Delta R.T.: 0.004 min
 Response: 18701647
 Conc: 211.35 ng/ml



#5 AR-1016-3

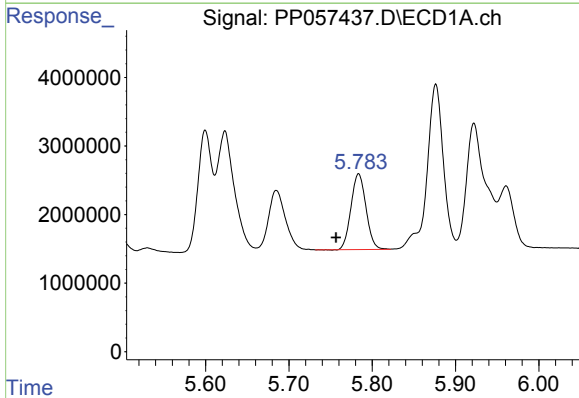
R.T.: 5.685 min
 Delta R.T.: 0.027 min
 Response: 12490395
 Conc: 249.35 ng/ml

Instrument :
 ECD_P
 ClientSampleId :
 AR1248CCC500



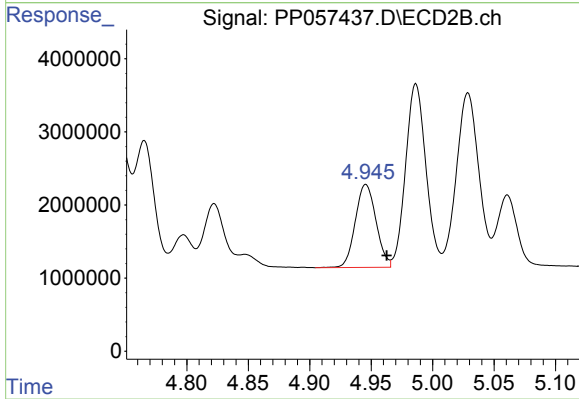
#5 AR-1016-3

R.T.: 4.946 min
 Delta R.T.: 0.025 min
 Response: 13324900
 Conc: 264.27 ng/ml



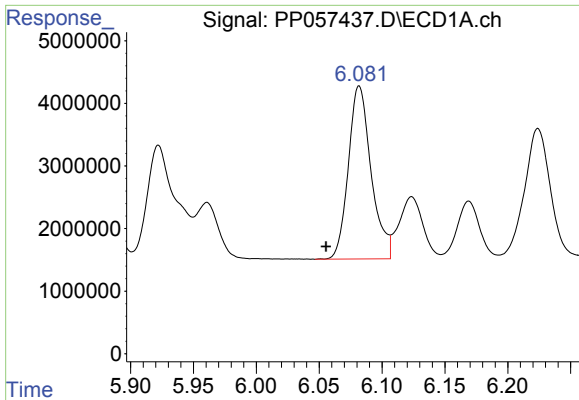
#6 AR-1016-4

R.T.: 5.784 min
 Delta R.T.: 0.027 min
 Response: 13811584
 Conc: 342.55 ng/ml



#6 AR-1016-4

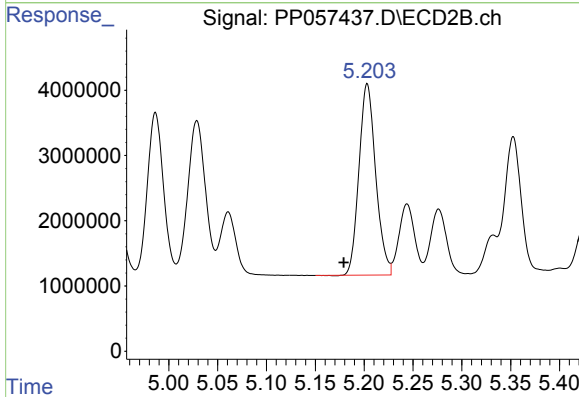
R.T.: 4.946 min
 Delta R.T.: -0.017 min
 Response: 13324900
 Conc: 330.85 ng/ml



#7 AR-1016-5

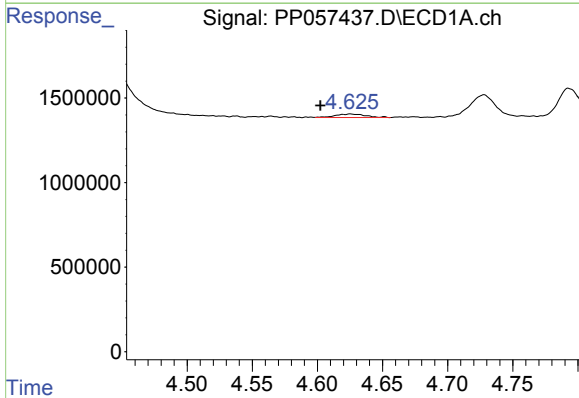
R.T.: 6.082 min
 Delta R.T.: 0.026 min
 Response: 34826543
 Conc: 852.78 ng/ml

Instrument :
 ECD_P
 ClientSampleId :
 AR1248CCC500



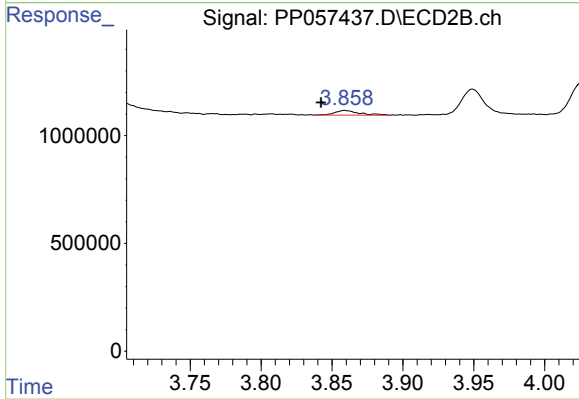
#7 AR-1016-5

R.T.: 5.203 min
 Delta R.T.: 0.024 min
 Response: 34982726
 Conc: 684.92 ng/ml



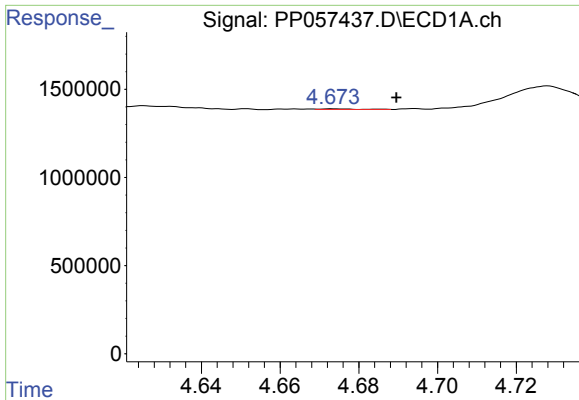
#8 AR-1221-1

R.T.: 4.625 min
 Delta R.T.: 0.023 min
 Response: 329503
 Conc: 13.19 ng/ml



#8 AR-1221-1

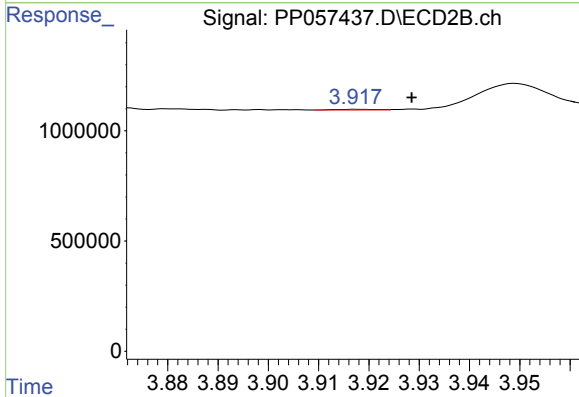
R.T.: 3.859 min
 Delta R.T.: 0.017 min
 Response: 263845
 Conc: 10.75 ng/ml



#9 AR-1221-2

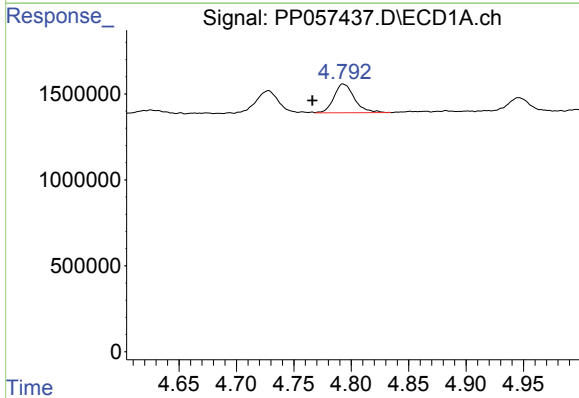
R.T.: 4.674 min
 Delta R.T.: -0.016 min
 Response: 21928
 Conc: 1.19 ng/ml

Instrument :
 ECD_P
 ClientSampleId :
 AR1248CCC500



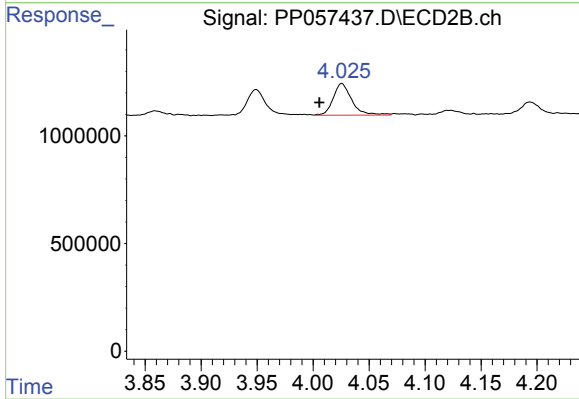
#9 AR-1221-2

R.T.: 3.918 min
 Delta R.T.: -0.011 min
 Response: 20364
 Conc: 1.09 ng/ml



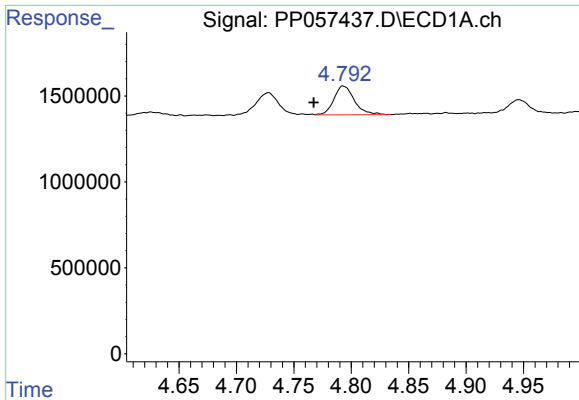
#10 AR-1221-3

R.T.: 4.793 min
 Delta R.T.: 0.027 min
 Response: 2079351
 Conc: 38.27 ng/ml



#10 AR-1221-3

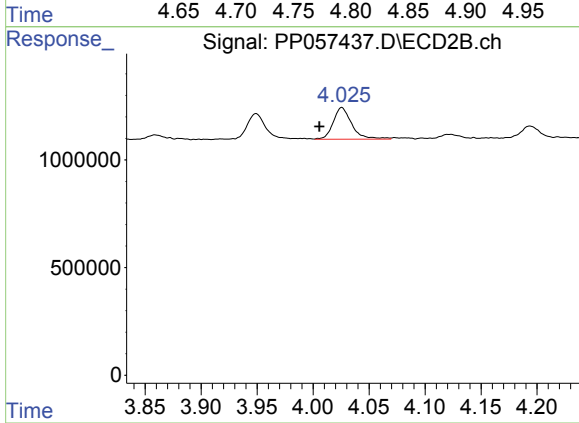
R.T.: 4.026 min
 Delta R.T.: 0.020 min
 Response: 1702925
 Conc: 30.56 ng/ml



#11 AR-1232-1

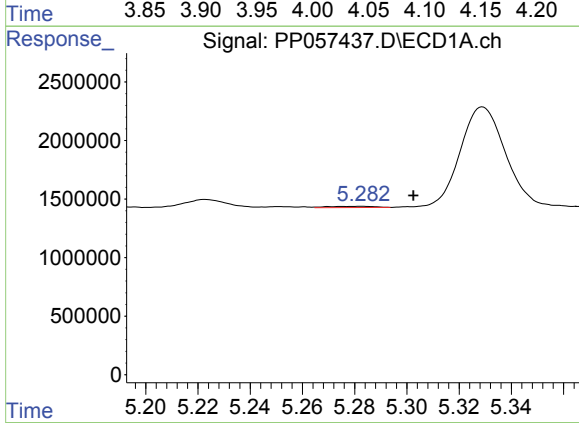
R.T.: 4.793 min
 Delta R.T.: 0.026 min
 Response: 2079351
 Conc: 51.20 ng/ml

Instrument :
 ECD_P
 ClientSampleId :
 AR1248CCC500



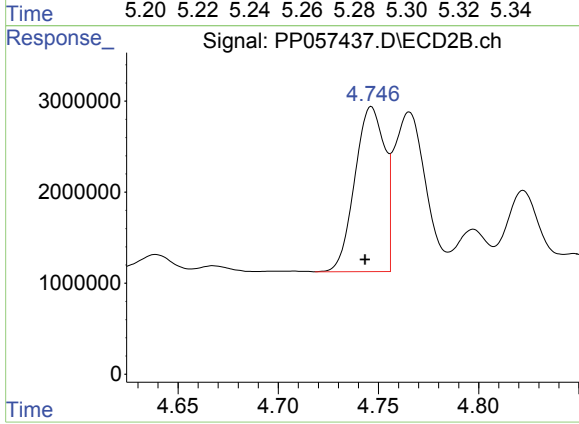
#11 AR-1232-1

R.T.: 4.026 min
 Delta R.T.: 0.020 min
 Response: 1702925
 Conc: 41.06 ng/ml



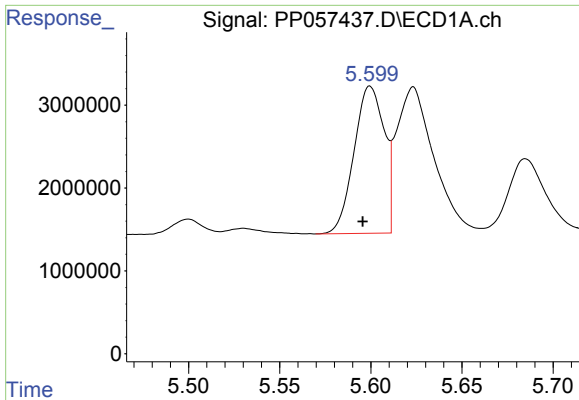
#12 AR-1232-2

R.T.: 5.282 min
 Delta R.T.: -0.020 min
 Response: 124331
 Conc: 5.31 ng/ml



#12 AR-1232-2

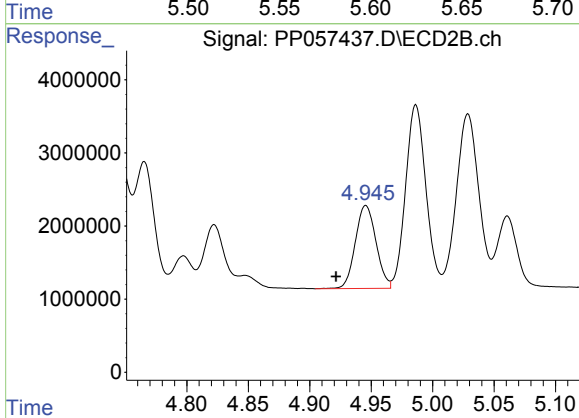
R.T.: 4.746 min
 Delta R.T.: 0.003 min
 Response: 18701647
 Conc: 451.13 ng/ml



#13 AR-1232-3

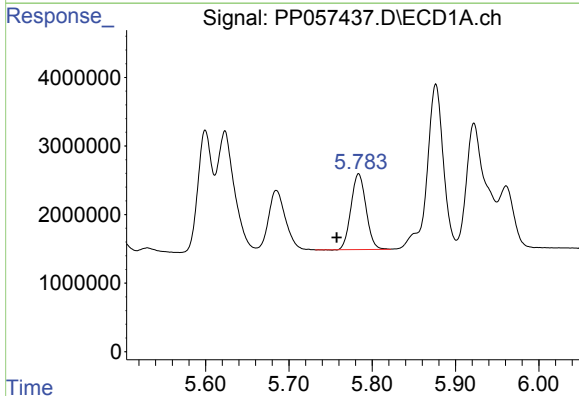
R.T.: 5.600 min
 Delta R.T.: 0.004 min
 Response: 20429291
 Conc: 553.64 ng/ml

Instrument :
 ECD_P
 ClientSampleId :
 AR1248CCC500



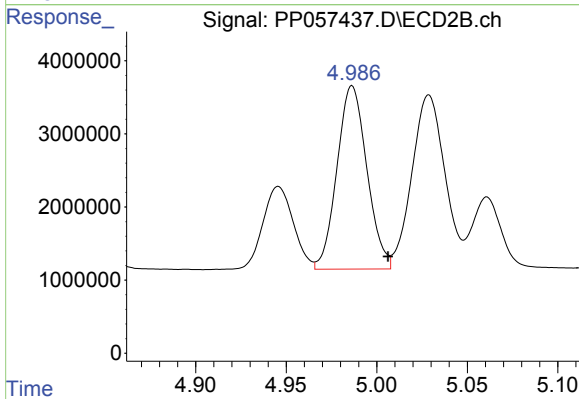
#13 AR-1232-3

R.T.: 4.946 min
 Delta R.T.: 0.024 min
 Response: 13324900
 Conc: 559.64 ng/ml



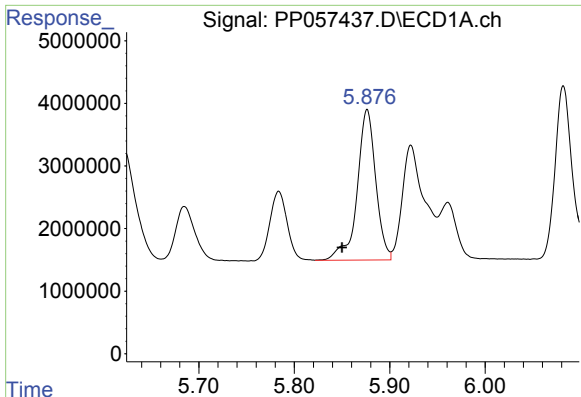
#14 AR-1232-4

R.T.: 5.784 min
 Delta R.T.: 0.026 min
 Response: 13811584
 Conc: 761.46 ng/ml



#14 AR-1232-4

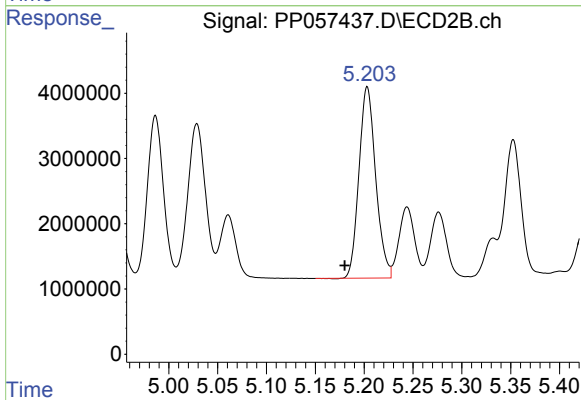
R.T.: 4.986 min
 Delta R.T.: -0.020 min
 Response: 28838751
 Conc: 1356.84 ng/ml



#15 AR-1232-5

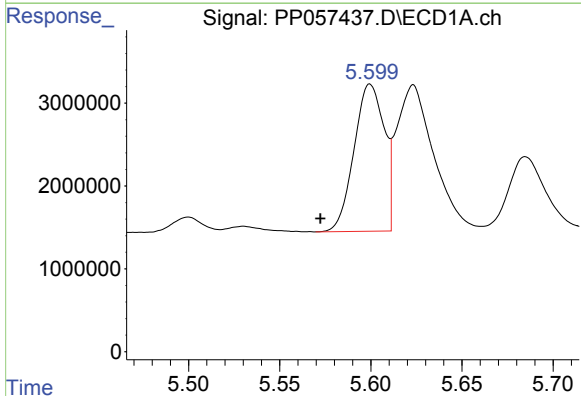
R.T.: 5.876 min
 Delta R.T.: 0.026 min
 Response: 32632945
 Conc: 2108.84 ng/ml

Instrument :
 ECD_P
 ClientSampleId :
 AR1248CCC500



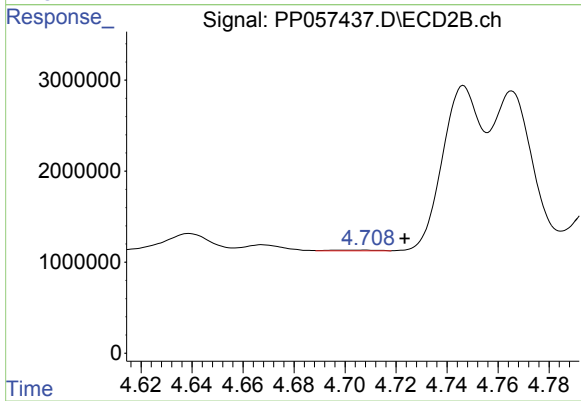
#15 AR-1232-5

R.T.: 5.203 min
 Delta R.T.: 0.023 min
 Response: 34982726
 Conc: 1471.15 ng/ml



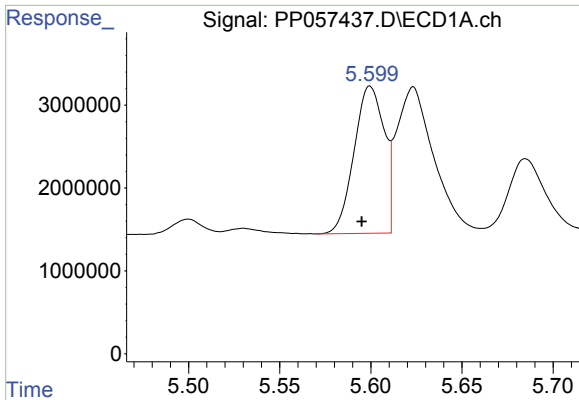
#16 AR-1242-1

R.T.: 5.600 min
 Delta R.T.: 0.027 min
 Response: 20429291
 Conc: 473.11 ng/ml



#16 AR-1242-1

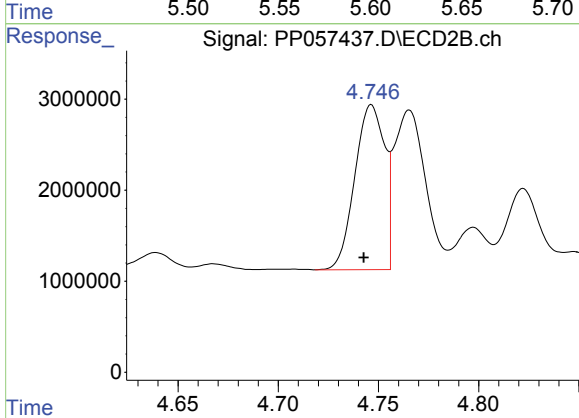
R.T.: 4.708 min
 Delta R.T.: -0.016 min
 Response: 108515
 Conc: 2.14 ng/ml



#17 AR-1242-2

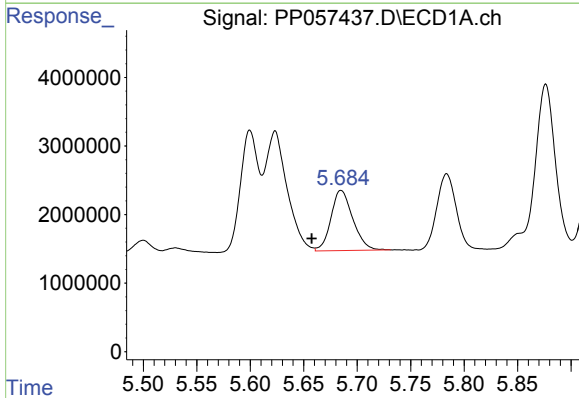
R.T.: 5.600 min
 Delta R.T.: 0.005 min
 Response: 20429291
 Conc: 325.87 ng/ml

Instrument :
 ECD_P
 ClientSampleId :
 AR1248CCC500



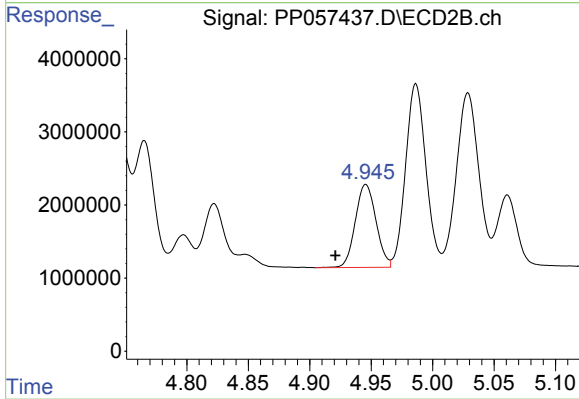
#17 AR-1242-2

R.T.: 4.746 min
 Delta R.T.: 0.004 min
 Response: 18701647
 Conc: 269.41 ng/ml



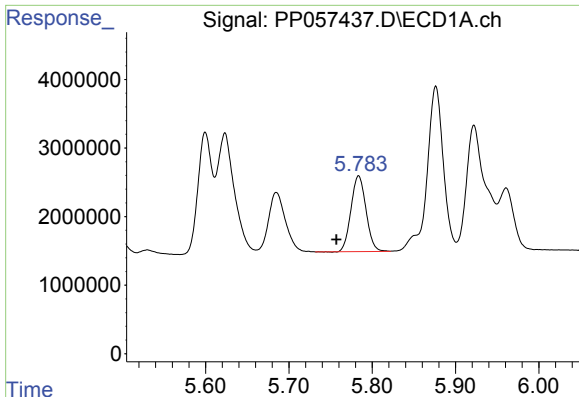
#18 AR-1242-3

R.T.: 5.685 min
 Delta R.T.: 0.028 min
 Response: 12490395
 Conc: 317.94 ng/ml



#18 AR-1242-3

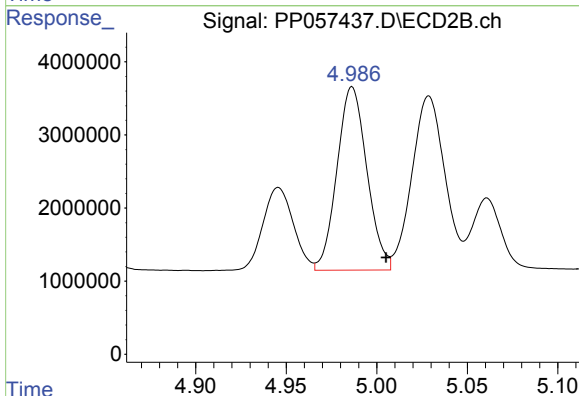
R.T.: 4.946 min
 Delta R.T.: 0.025 min
 Response: 13324900
 Conc: 328.91 ng/ml



#19 AR-1242-4

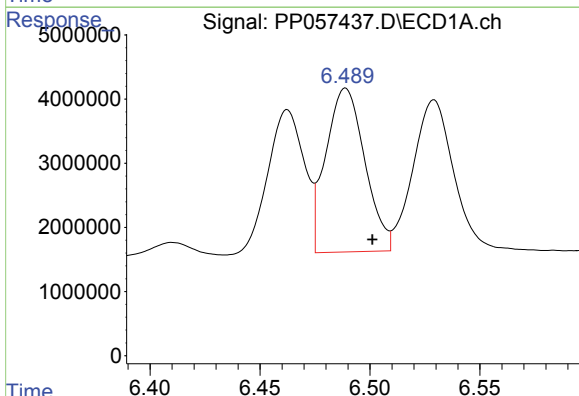
R.T.: 5.784 min
 Delta R.T.: 0.027 min
 Response: 13811584
 Conc: 433.88 ng/ml

Instrument :
 ECD_P
 ClientSampleId :
 AR1248CCC500



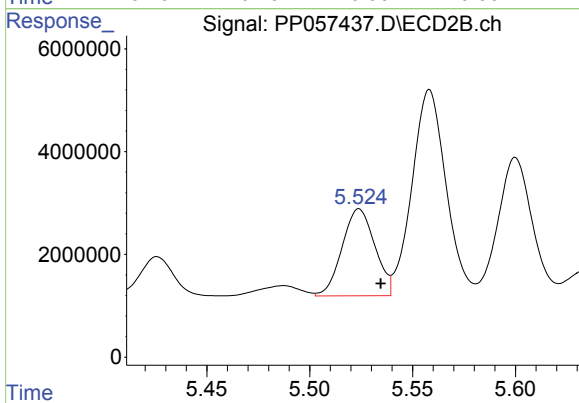
#19 AR-1242-4

R.T.: 4.986 min
 Delta R.T.: -0.019 min
 Response: 28838751
 Conc: 717.21 ng/ml



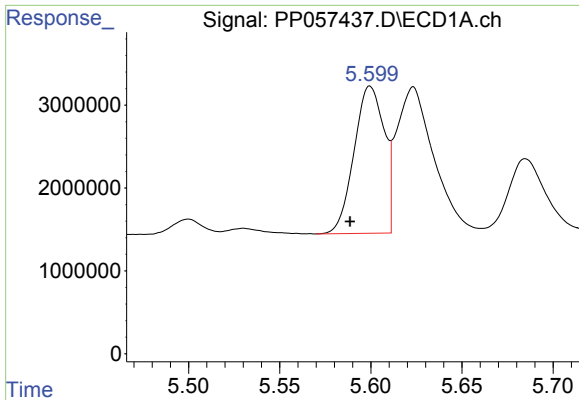
#20 AR-1242-5

R.T.: 6.489 min
 Delta R.T.: -0.012 min
 Response: 31508130
 Conc: 1133.12 ng/ml



#20 AR-1242-5

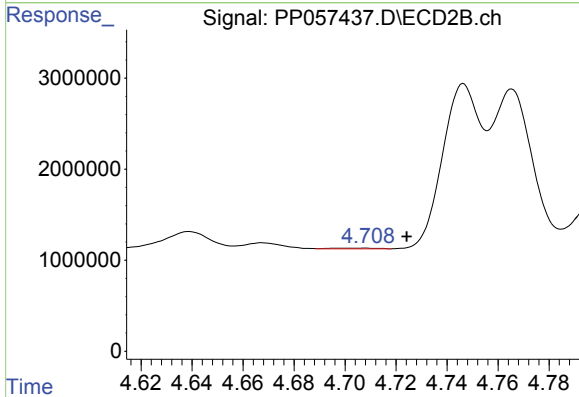
R.T.: 5.524 min
 Delta R.T.: -0.011 min
 Response: 18772394
 Conc: 382.48 ng/ml



#21 AR-1248-1

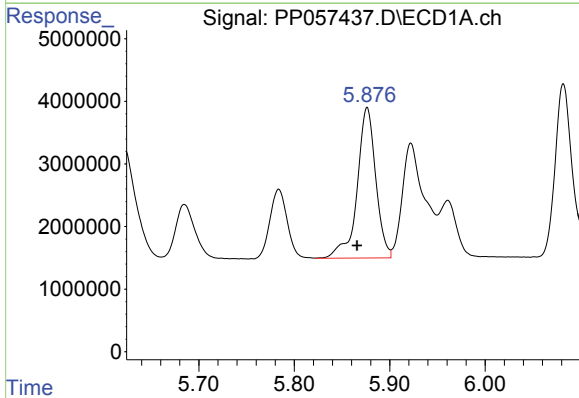
R.T.: 5.600 min
 Delta R.T.: 0.011 min
 Response: 20429291
 Conc: 529.09 ng/ml

Instrument :
 ECD_P
 ClientSampleId :
 AR1248CCC500



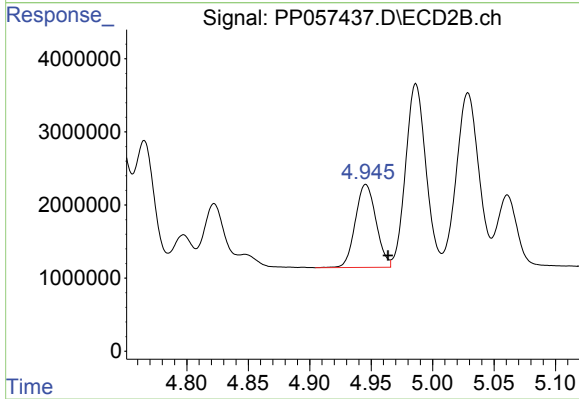
#21 AR-1248-1

R.T.: 4.708 min
 Delta R.T.: -0.016 min
 Response: 108515
 Conc: 2.38 ng/ml



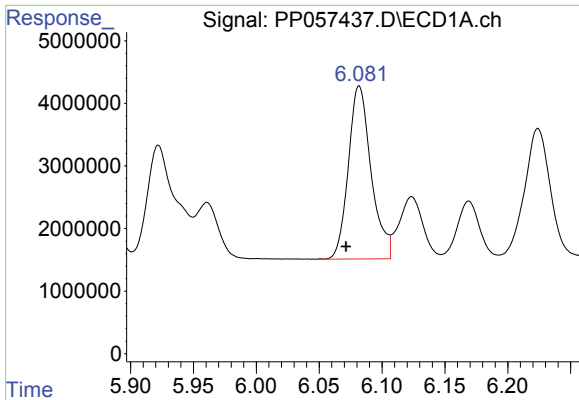
#22 AR-1248-2

R.T.: 5.876 min
 Delta R.T.: 0.011 min
 Response: 32632945
 Conc: 554.92 ng/ml



#22 AR-1248-2

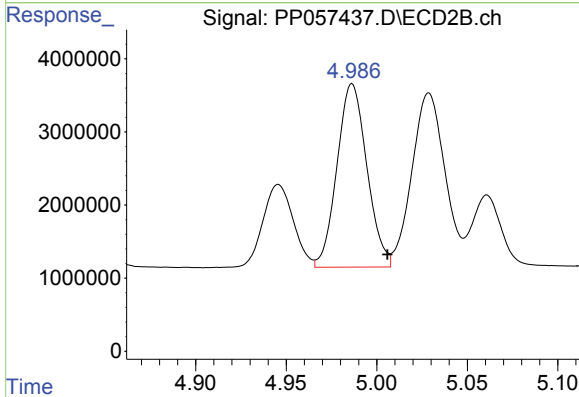
R.T.: 4.946 min
 Delta R.T.: -0.018 min
 Response: 13324900
 Conc: 208.48 ng/ml



#23 AR-1248-3

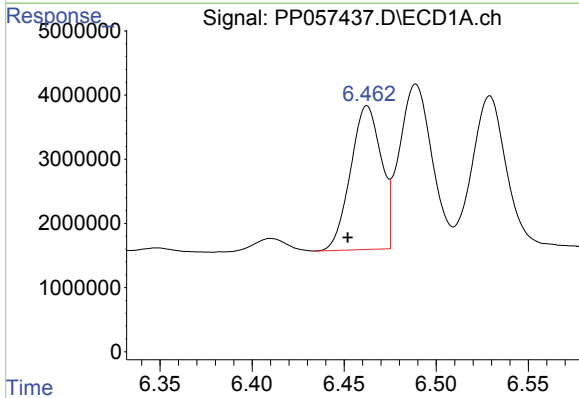
R.T.: 6.082 min
 Delta R.T.: 0.010 min
 Response: 34826543
 Conc: 561.90 ng/ml

Instrument :
 ECD_P
 ClientSampleId :
 AR1248CCC500



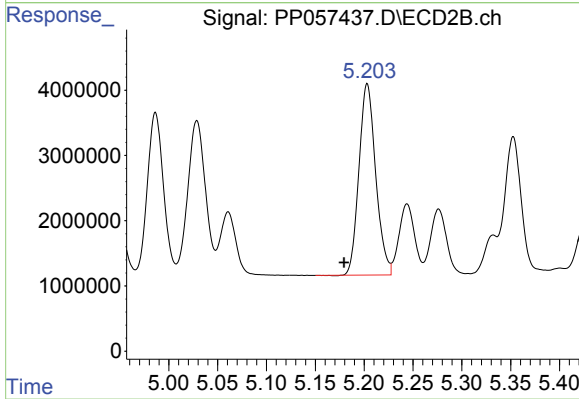
#23 AR-1248-3

R.T.: 4.986 min
 Delta R.T.: -0.019 min
 Response: 28838751
 Conc: 428.03 ng/ml



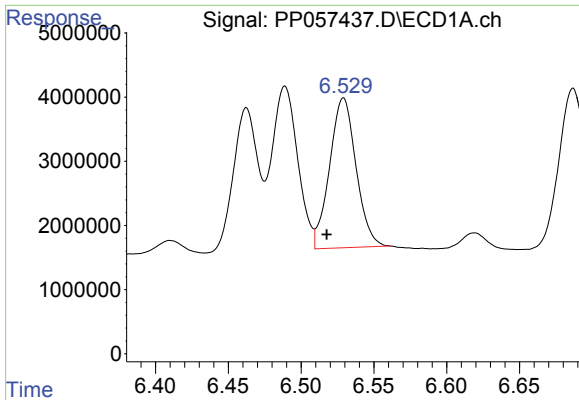
#24 AR-1248-4

R.T.: 6.462 min
 Delta R.T.: 0.010 min
 Response: 25953479
 Conc: 462.82 ng/ml



#24 AR-1248-4

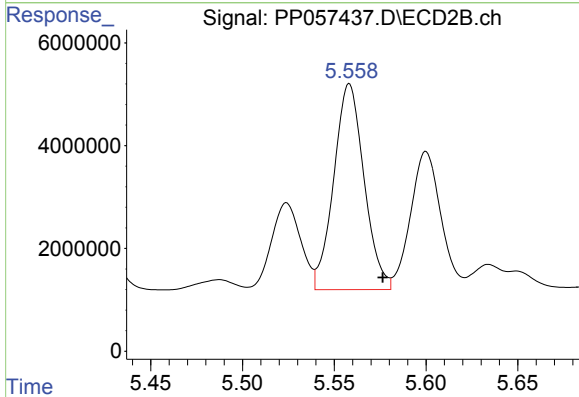
R.T.: 5.203 min
 Delta R.T.: 0.024 min
 Response: 34982726
 Conc: 442.63 ng/ml



#25 AR-1248-5

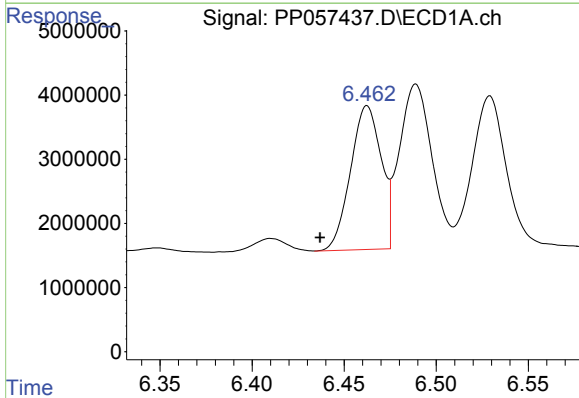
R.T.: 6.529 min
 Delta R.T.: 0.011 min
 Response: 29645504
 Conc: 532.07 ng/ml

Instrument :
 ECD_P
 ClientSampleId :
 AR1248CCC500



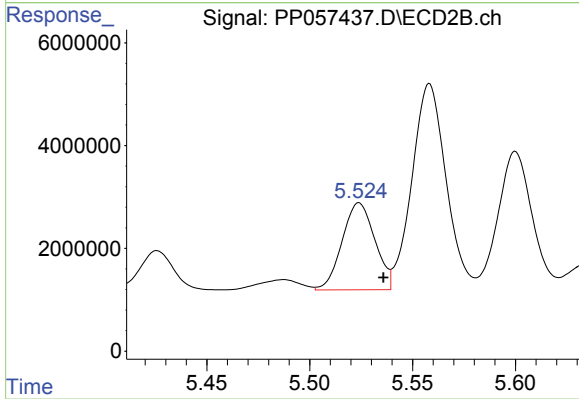
#25 AR-1248-5

R.T.: 5.558 min
 Delta R.T.: -0.018 min
 Response: 46111904
 Conc: 617.93 ng/ml



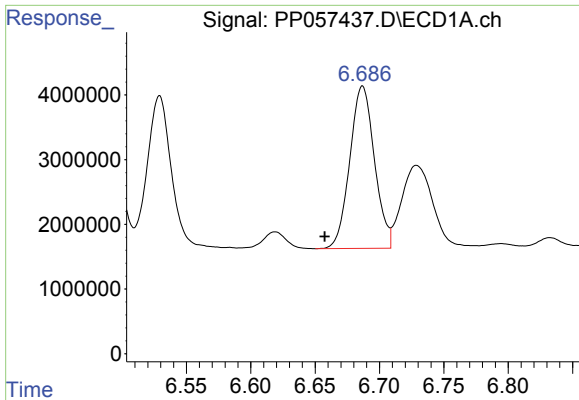
#26 AR-1254-1

R.T.: 6.462 min
 Delta R.T.: 0.025 min
 Response: 25953479
 Conc: 423.49 ng/ml



#26 AR-1254-1

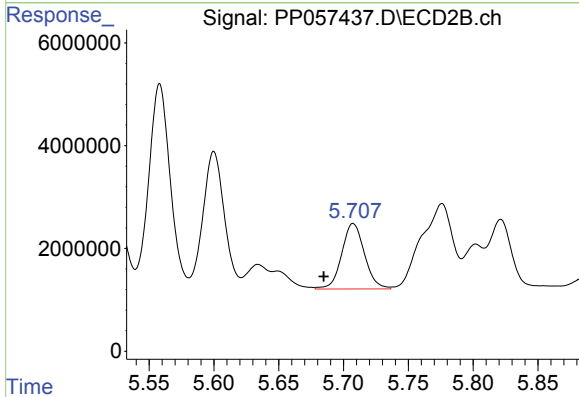
R.T.: 5.524 min
 Delta R.T.: -0.012 min
 Response: 18772394
 Conc: 187.07 ng/ml



#27 AR-1254-2

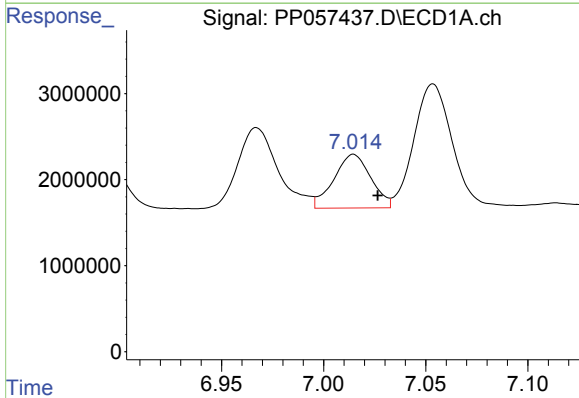
R.T.: 6.687 min
 Delta R.T.: 0.029 min
 Response: 33468596
 Conc: 392.99 ng/ml

Instrument :
 ECD_P
 ClientSampleId :
 AR1248CCC500



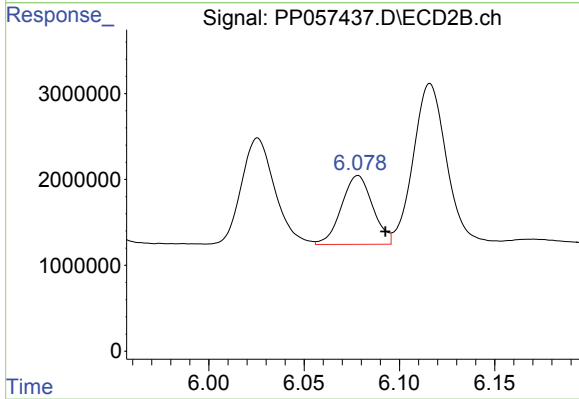
#27 AR-1254-2

R.T.: 5.707 min
 Delta R.T.: 0.023 min
 Response: 15592239
 Conc: 175.36 ng/ml



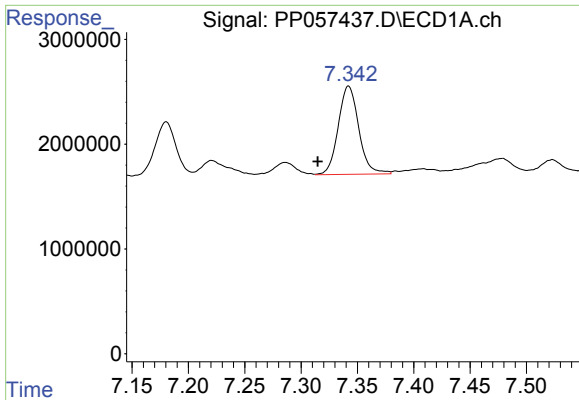
#28 AR-1254-3

R.T.: 7.015 min
 Delta R.T.: -0.012 min
 Response: 7851606
 Conc: 98.29 ng/ml



#28 AR-1254-3

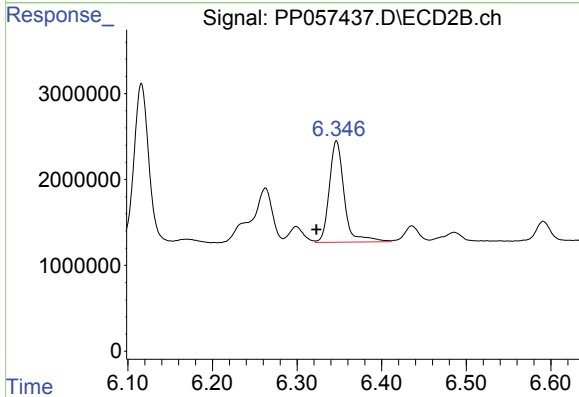
R.T.: 6.078 min
 Delta R.T.: -0.014 min
 Response: 9130126
 Conc: 65.19 ng/ml



#29 AR-1254-4

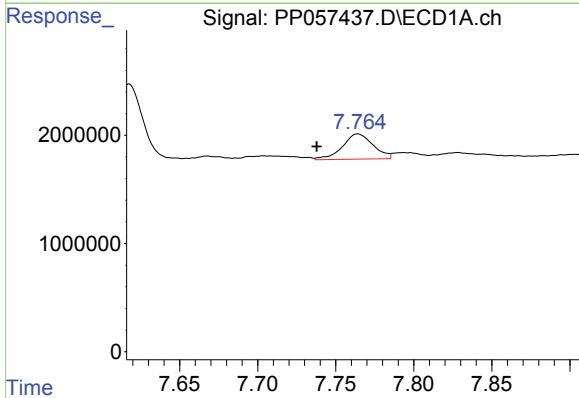
R.T.: 7.342 min
 Delta R.T.: 0.027 min
 Response: 10675089
 Conc: 191.21 ng/ml

Instrument :
 ECD_P
 ClientSampleId :
 AR1248CCC500



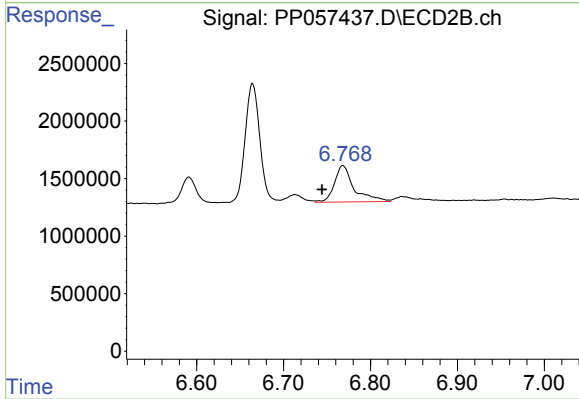
#29 AR-1254-4

R.T.: 6.347 min
 Delta R.T.: 0.024 min
 Response: 14461437
 Conc: 169.57 ng/ml



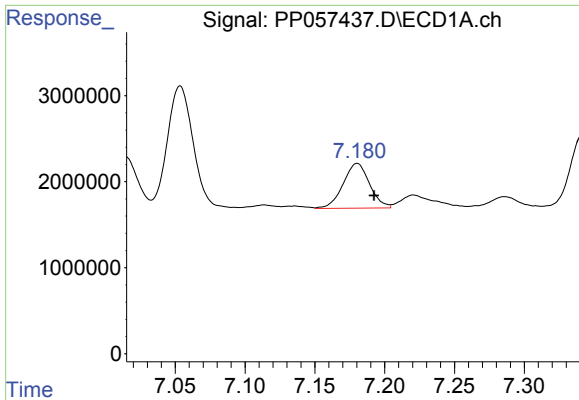
#30 AR-1254-5

R.T.: 7.764 min
 Delta R.T.: 0.026 min
 Response: 3196008
 Conc: 52.55 ng/ml



#30 AR-1254-5

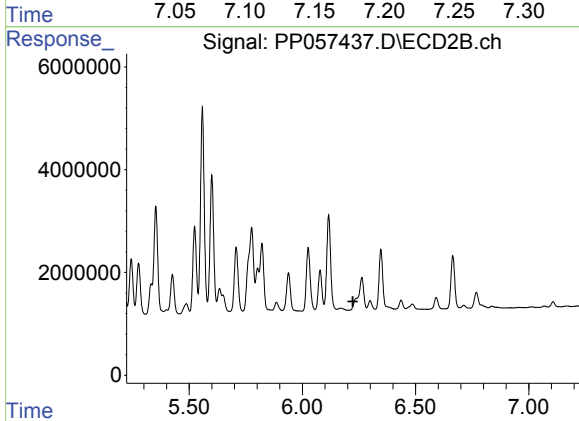
R.T.: 6.768 min
 Delta R.T.: 0.024 min
 Response: 4941295
 Conc: 37.78 ng/ml



#31 AR-1260-1

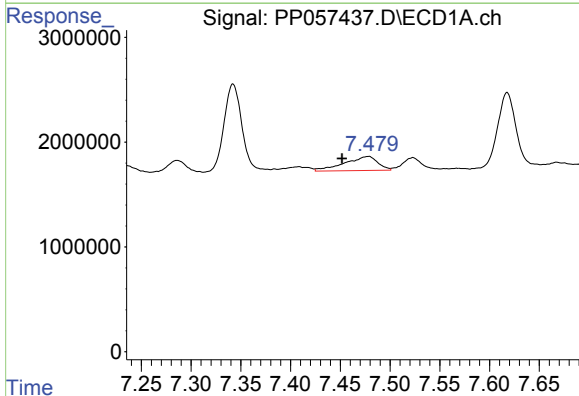
R.T.: 7.180 min
 Delta R.T.: -0.012 min
 Response: 6884046
 Conc: 96.49 ng/ml

Instrument :
 ECD_P
 ClientSampleId :
 AR1248CCC500



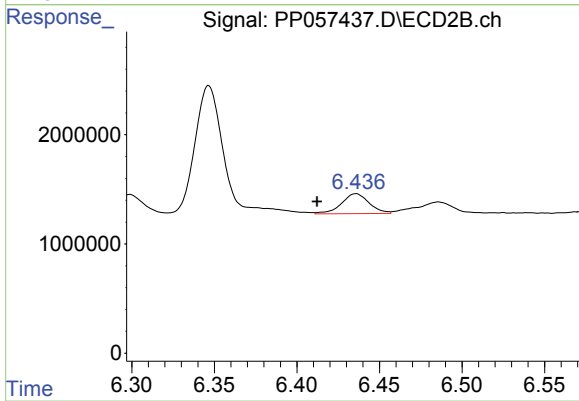
#31 AR-1260-1

R.T.: 0.000 min
 Exp R.T. : 6.223 min
 Response: 0
 Conc: N.D.



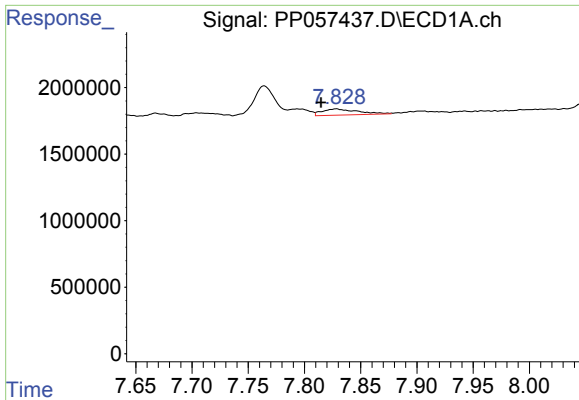
#32 AR-1260-2

R.T.: 7.478 min
 Delta R.T.: 0.026 min
 Response: 3128987
 Conc: 48.52 ng/ml



#32 AR-1260-2

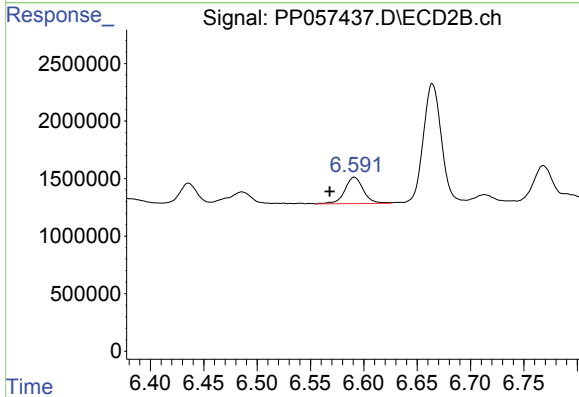
R.T.: 6.436 min
 Delta R.T.: 0.023 min
 Response: 2152749
 Conc: 20.25 ng/ml



#33 AR-1260-3

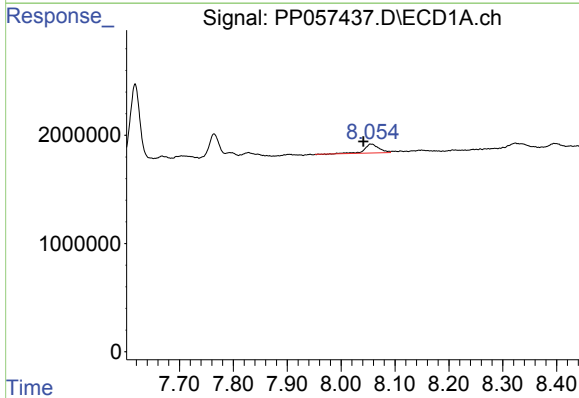
R.T.: 7.828 min
 Delta R.T.: 0.013 min
 Response: 1030417
 Conc: 24.84 ng/ml

Instrument :
 ECD_P
 ClientSampleId :
 AR1248CCC500



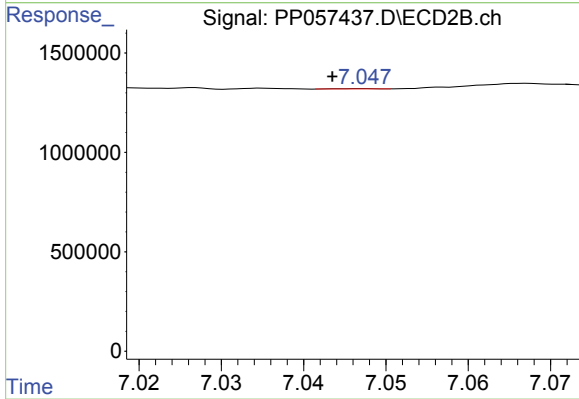
#33 AR-1260-3

R.T.: 6.591 min
 Delta R.T.: 0.023 min
 Response: 2765846
 Conc: 26.57 ng/ml



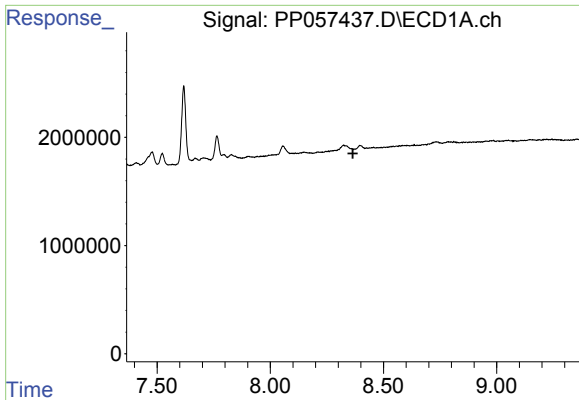
#34 AR-1260-4

R.T.: 8.055 min
 Delta R.T.: 0.014 min
 Response: 1581379
 Conc: 31.16 ng/ml



#34 AR-1260-4

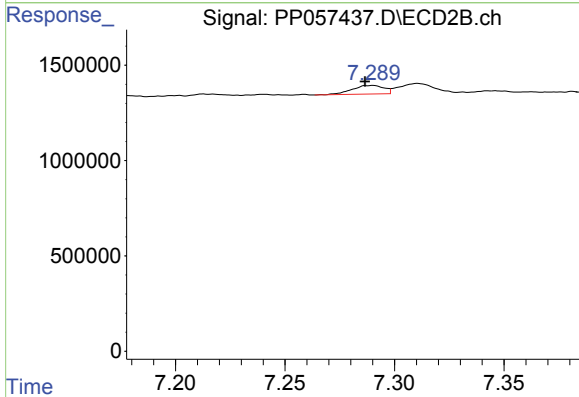
R.T.: 7.047 min
 Delta R.T.: 0.003 min
 Response: 6930
 Conc: 0.09 ng/ml



#35 AR-1260-5

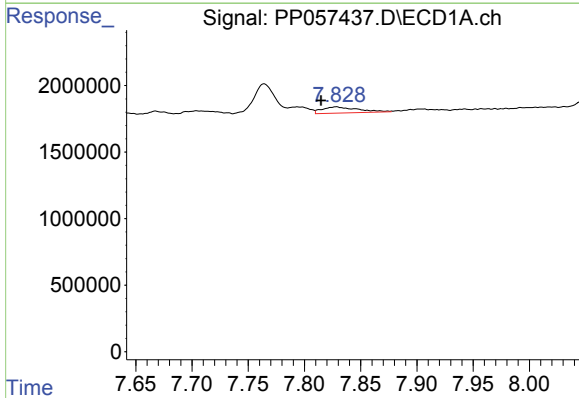
R.T.: 0.000 min
 Exp R.T. : 8.365 min
 Response: 0
 Conc: N.D.

Instrument :
 ECD_P
 ClientSampleId :
 AR1248CCC500



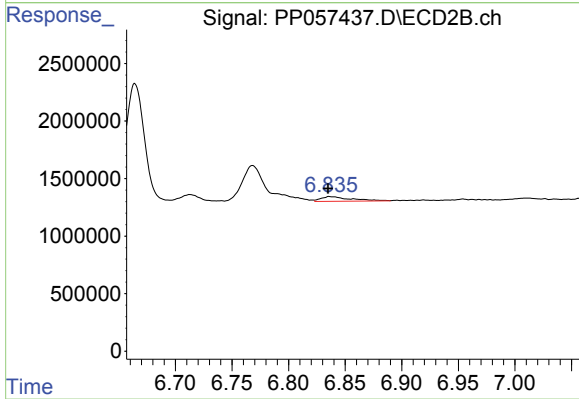
#35 AR-1260-5

R.T.: 7.290 min
 Delta R.T.: 0.003 min
 Response: 451311
 Conc: 2.86 ng/ml



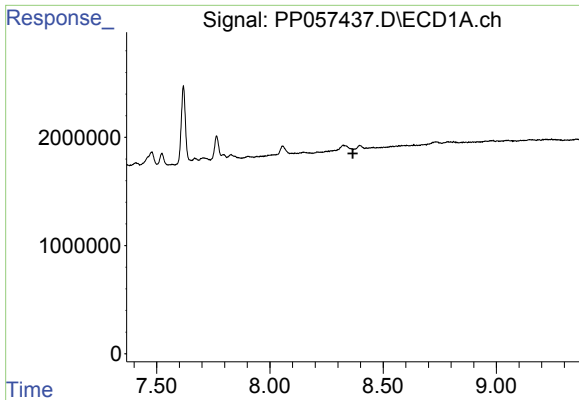
#36 AR-1262-1

R.T.: 7.828 min
 Delta R.T.: 0.013 min
 Response: 1030417
 Conc: 14.66 ng/ml



#36 AR-1262-1

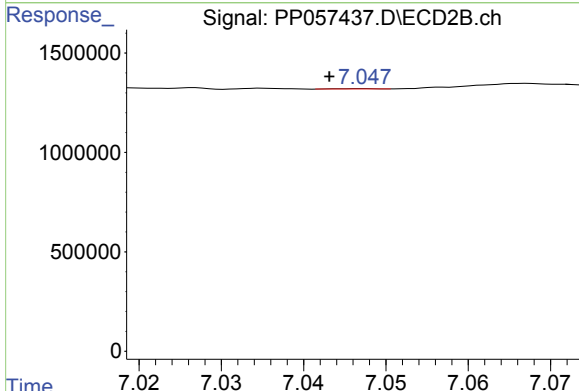
R.T.: 6.837 min
 Delta R.T.: 0.002 min
 Response: 749886
 Conc: 13.71 ng/ml



#37 AR-1262-2

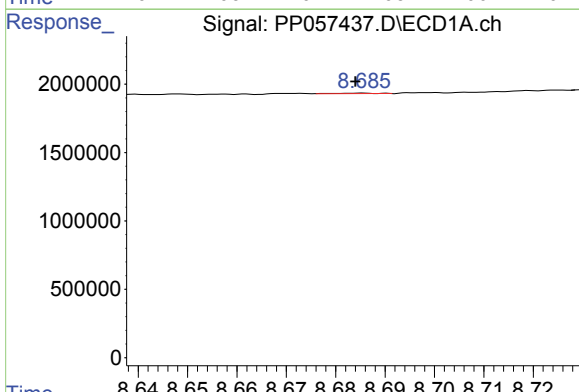
R.T.: 0.000 min
 Exp R.T.: 8.366 min
 Response: 0
 Conc: N.D.

Instrument : ECD_P
 ClientSampleId : AR1248CCC500



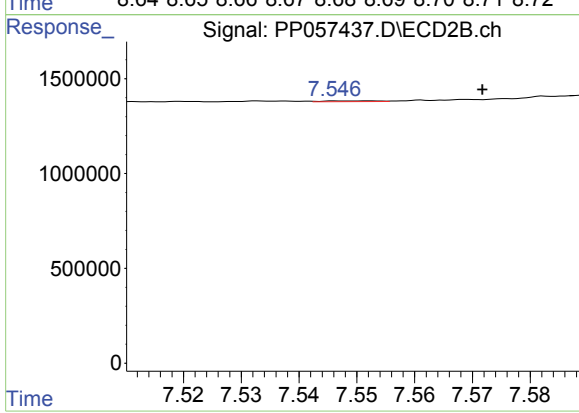
#37 AR-1262-2

R.T.: 7.047 min
 Delta R.T.: 0.004 min
 Response: 6930
 Conc: 0.06 ng/ml



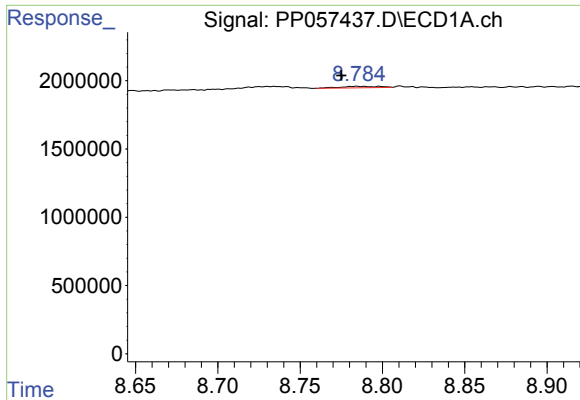
#38 AR-1262-3

R.T.: 8.685 min
 Delta R.T.: 0.001 min
 Response: 16442
 Conc: 0.23 ng/ml



#38 AR-1262-3

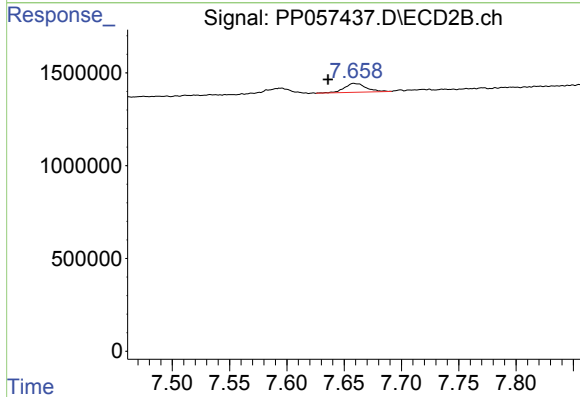
R.T.: 7.552 min
 Delta R.T.: -0.020 min
 Response: 23747
 Conc: 0.28 ng/ml



#39 AR-1262-4

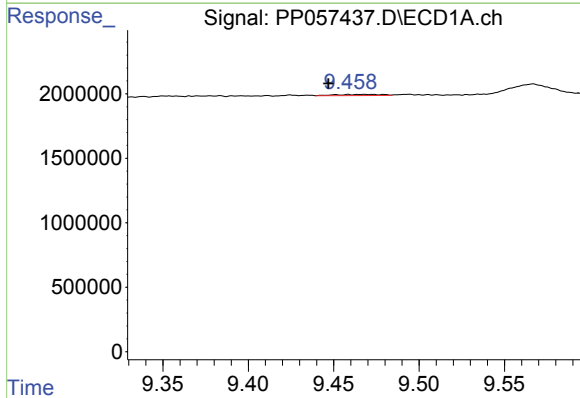
R.T.: 8.784 min
 Delta R.T.: 0.009 min
 Response: 179216
 Conc: 3.31 ng/ml

Instrument :
 ECD_P
 ClientSampleId :
 AR1248CCC500



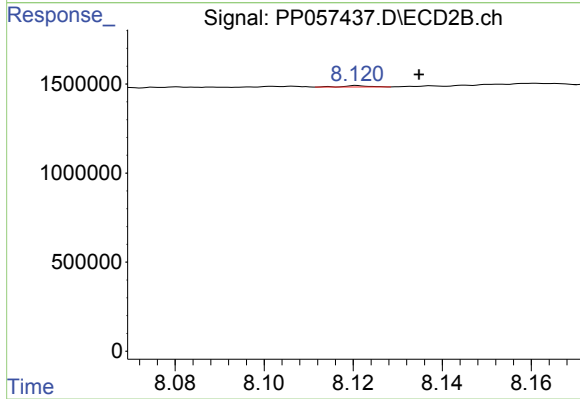
#39 AR-1262-4

R.T.: 7.659 min
 Delta R.T.: 0.023 min
 Response: 624394
 Conc: 4.16 ng/ml



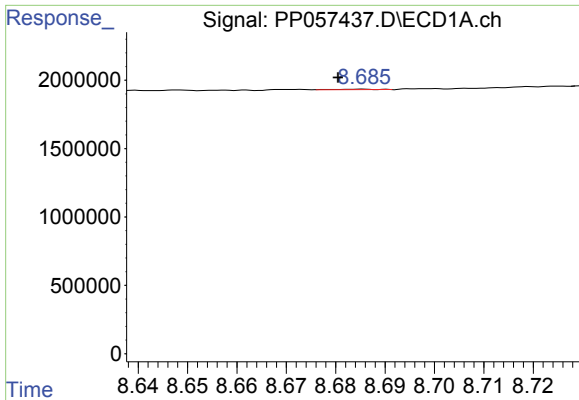
#40 AR-1262-5

R.T.: 9.459 min
 Delta R.T.: 0.012 min
 Response: 158134
 Conc: 4.71 ng/ml



#40 AR-1262-5

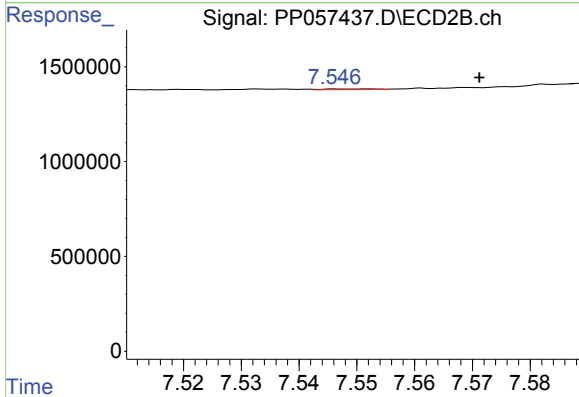
R.T.: 8.121 min
 Delta R.T.: -0.014 min
 Response: 28187
 Conc: 0.41 ng/ml



#41 AR-1268-1

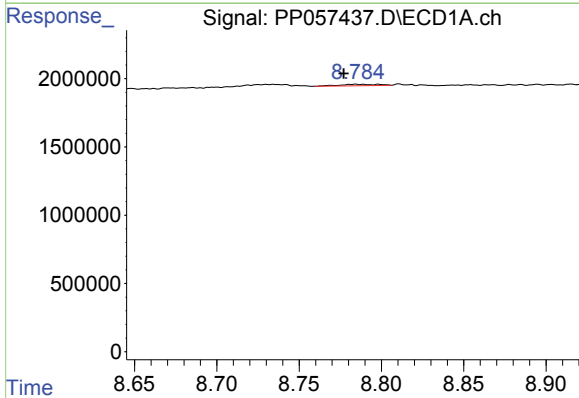
R.T.: 8.685 min
 Delta R.T.: 0.005 min
 Response: 16442
 Conc: 0.13 ng/ml

Instrument :
 ECD_P
 ClientSampleId :
 AR1248CCC500



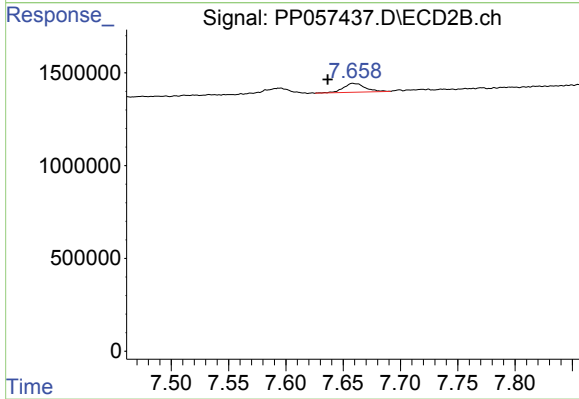
#41 AR-1268-1

R.T.: 7.552 min
 Delta R.T.: -0.019 min
 Response: 23747
 Conc: 0.10 ng/ml



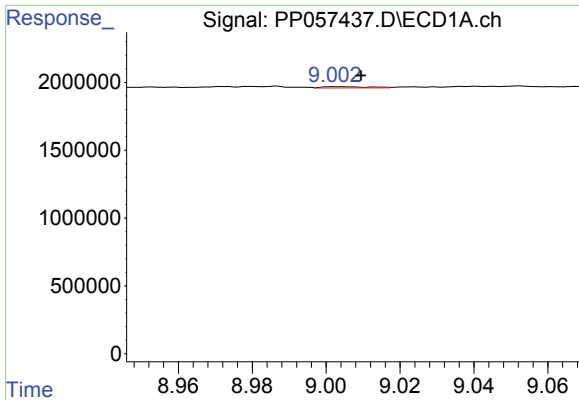
#42 AR-1268-2

R.T.: 8.784 min
 Delta R.T.: 0.007 min
 Response: 179216
 Conc: 1.64 ng/ml



#42 AR-1268-2

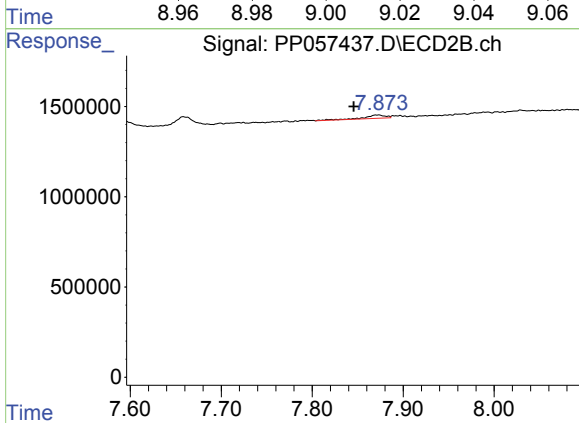
R.T.: 7.659 min
 Delta R.T.: 0.022 min
 Response: 624394
 Conc: 2.86 ng/ml



#43 AR-1268-3

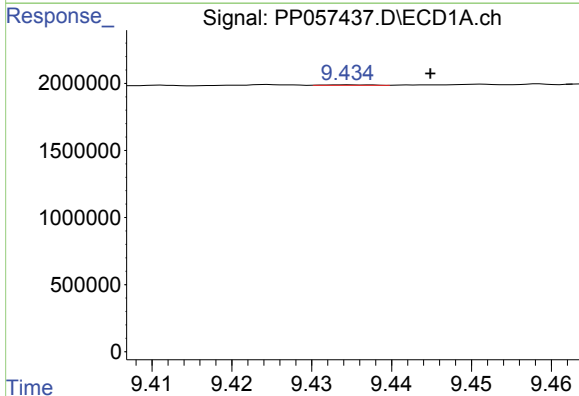
R.T.: 9.003 min
 Delta R.T.: -0.006 min
 Response: 75967
 Conc: 0.76 ng/ml

Instrument :
 ECD_P
 ClientSampleId :
 AR1248CCC500



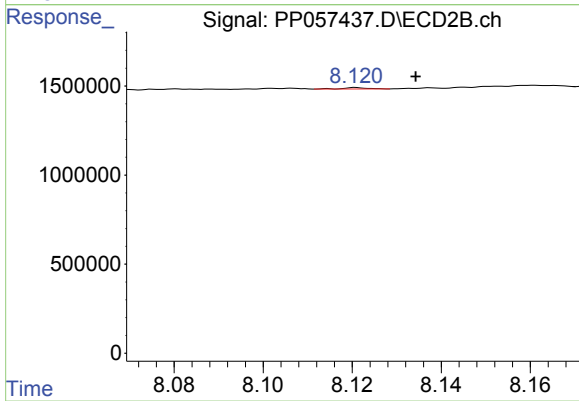
#43 AR-1268-3

R.T.: 7.873 min
 Delta R.T.: 0.027 min
 Response: 305478
 Conc: 1.60 ng/ml



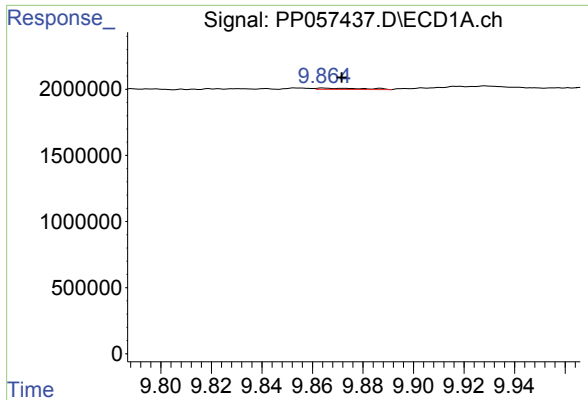
#44 AR-1268-4

R.T.: 9.435 min
 Delta R.T.: -0.010 min
 Response: 17476
 Conc: 0.47 ng/ml



#44 AR-1268-4

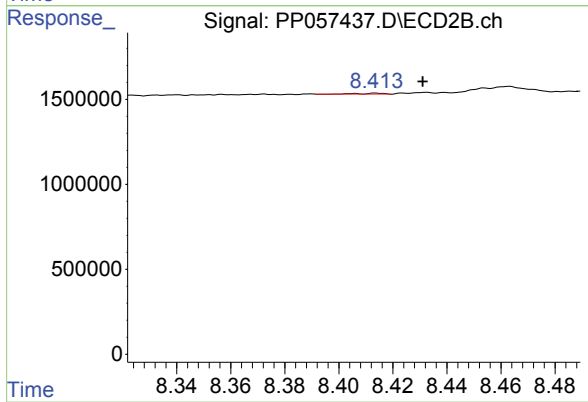
R.T.: 8.121 min
 Delta R.T.: -0.013 min
 Response: 28187
 Conc: 0.37 ng/ml



#45 AR-1268-5

R.T.: 9.864 min
 Delta R.T.: -0.007 min
 Response: 126474
 Conc: 0.49 ng/ml

Instrument :
 ECD_P
 ClientSampleId :
 AR1248CCC500



#45 AR-1268-5

R.T.: 8.414 min
 Delta R.T.: -0.017 min
 Response: 30749
 Conc: 0.06 ng/ml