

Data Path : Z:\pestpcbsrv\HPCHEM1\ECD\_P\Data\PP050324\  
 Data File : PP064714.D  
 Signal(s) : Signal #1: ECD1A.ch Signal #2: ECD2B.ch  
 Acq On : 03 May 2024 14:51  
 Operator : YP\AJ  
 Sample : I.BLK  
 Misc :  
 ALS Vial : 2 Sample Multiplier: 1

Instrument :  
 ECD\_P  
 ClientSampleId :  
 I.BLK

Integration File signal 1: autoint1.e  
 Integration File signal 2: autoint2.e  
 Quant Time: May 04 04:34:14 2024  
 Quant Method : Z:\pestpcbsrv\HPCHEM1\ECD\_P\methods\PP043024.M  
 Quant Title : GC EXTRACTABLES  
 QLast Update : Wed May 01 05:01:39 2024  
 Response via : Initial Calibration  
 Integrator: ChemStation

Volume Inj. : 2 µl  
 Signal #1 Phase : ZB-MR1 Signal #2 Phase: ZB-MR2  
 Signal #1 Info : 30Mx0.32mmx 0.50µ Signal #2 Info : 30M x 0.32mm x 0.25µm

Compound	RT#1	RT#2	Resp#1	Resp#2	ng/ml	ng/ml
-----						
System Monitoring Compounds						
1) SA Tetrachlo...	4.378	3.454	28528504	42539760	16.209	18.043
2) SA Decachlor...	10.072	8.355	21727591	36818872	24.421	19.738
Target Compounds						
9) L2 AR-1221-2	4.683	3.746	482770	616636	36.189	29.902
28) L6 AR-1254-3	6.979	0.000	329097	0	3.879	N.D. #
30) L6 AR-1254-5	7.675	0.000	219335	0	3.977	N.D. #
35) L7 AR-1260-5	8.287	0.000	75961	0	0.805	N.D. #
37) L8 AR-1262-2	8.287	0.000	75961	0	0.784	N.D. #
-----						

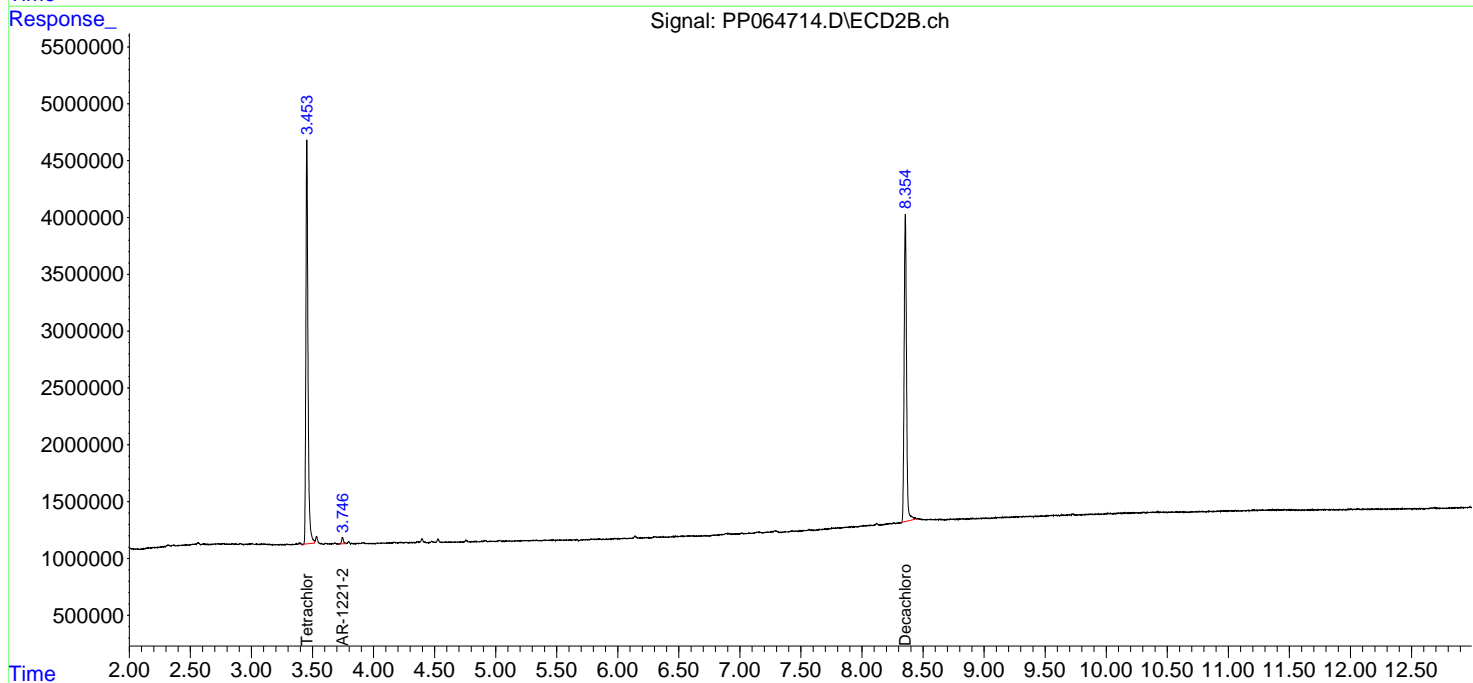
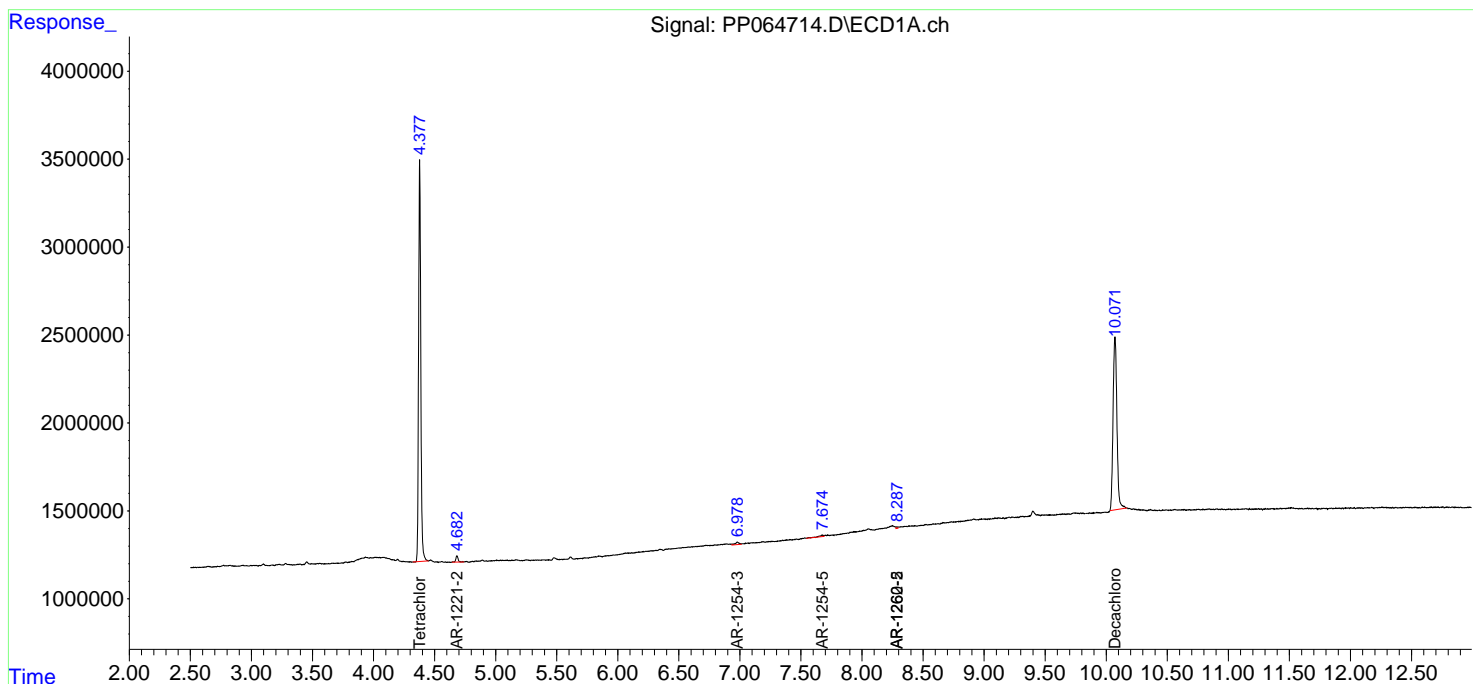
(f)=RT Delta > 1/2 Window (#)=Amounts differ by > 25% (m)=manual int.

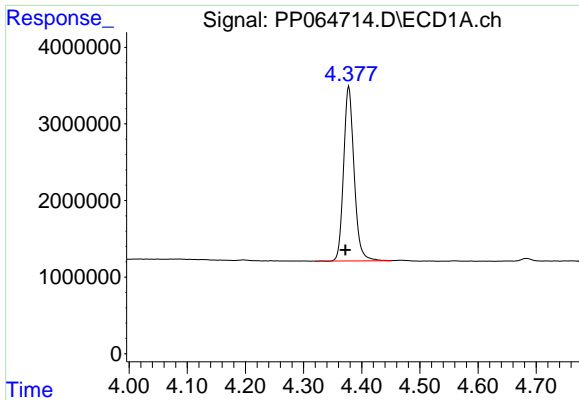
Data Path : Z:\pestpcbsrv\HPCHEM1\ECD\_P\Data\PP050324\  
 Data File : PP064714.D  
 Signal(s) : Signal #1: ECD1A.ch Signal #2: ECD2B.ch  
 Acq On : 03 May 2024 14:51  
 Operator : YP\AJ  
 Sample : I.BLK  
 Misc :  
 ALS Vial : 2 Sample Multiplier: 1

Instrument :  
 ECD\_P  
 ClientSampleId :  
 I.BLK

Integration File signal 1: autoint1.e  
 Integration File signal 2: autoint2.e  
 Quant Time: May 04 04:34:14 2024  
 Quant Method : Z:\pestpcbsrv\HPCHEM1\ECD\_P\methods\PP043024.M  
 Quant Title : GC EXTRACTABLES  
 QLast Update : Wed May 01 05:01:39 2024  
 Response via : Initial Calibration  
 Integrator: ChemStation

Volume Inj. : 2 µl  
 Signal #1 Phase : ZB-MR1 Signal #2 Phase: ZB-MR2  
 Signal #1 Info : 30Mx0.32mmx 0.50µ Signal #2 Info : 30M x 0.32mm x 0.25µm

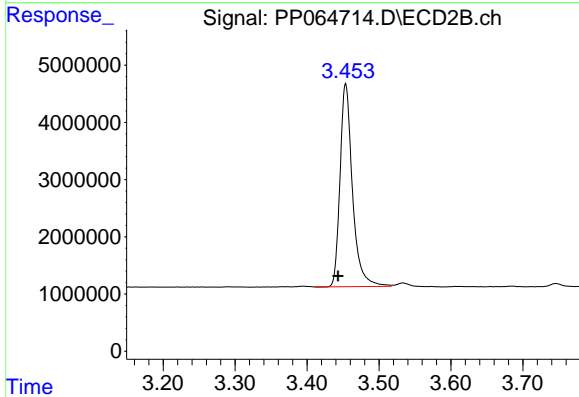




#1 Tetrachloro-m-xylene

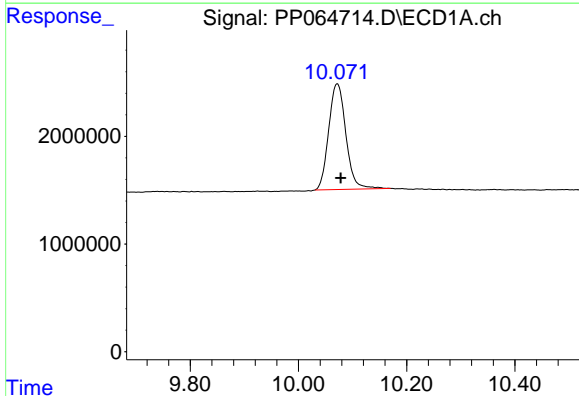
R.T.: 4.378 min  
 Delta R.T.: 0.006 min  
 Response: 28528504  
 Conc: 16.21 ng/ml

Instrument :  
 ECD\_P  
 ClientSampleId :  
 I.BLK



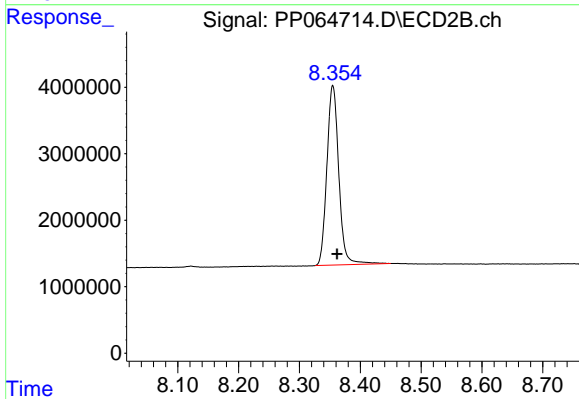
#1 Tetrachloro-m-xylene

R.T.: 3.454 min  
 Delta R.T.: 0.011 min  
 Response: 42539760  
 Conc: 18.04 ng/ml



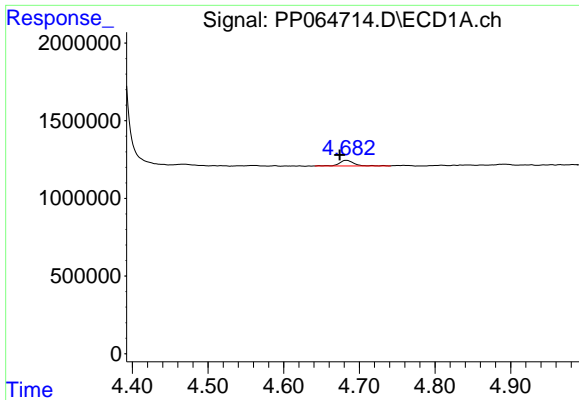
#2 Decachlorobiphenyl

R.T.: 10.072 min  
 Delta R.T.: -0.007 min  
 Response: 21727591  
 Conc: 24.42 ng/ml



#2 Decachlorobiphenyl

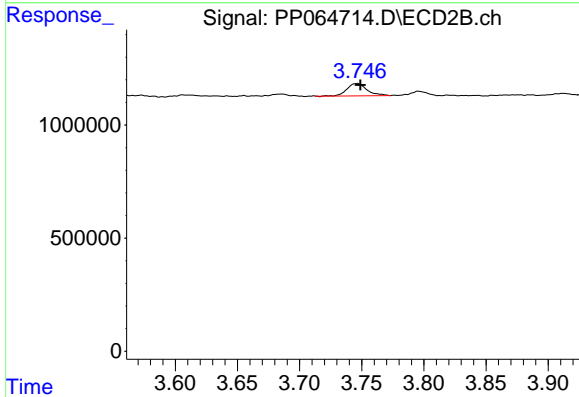
R.T.: 8.355 min  
 Delta R.T.: -0.007 min  
 Response: 36818872  
 Conc: 19.74 ng/ml



#9 AR-1221-2

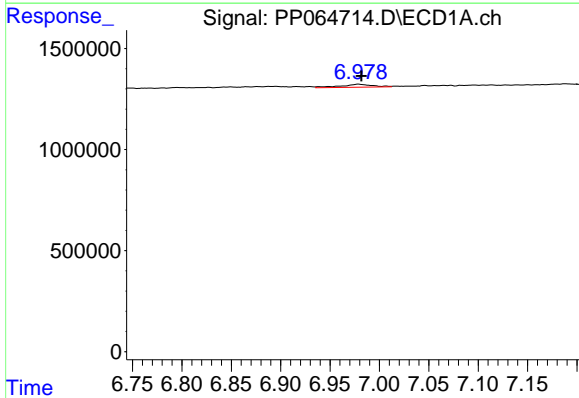
R.T.: 4.683 min  
 Delta R.T.: 0.009 min  
 Response: 482770  
 Conc: 36.19 ng/ml

Instrument :  
 ECD\_P  
 ClientSampleId :  
 I.BLK



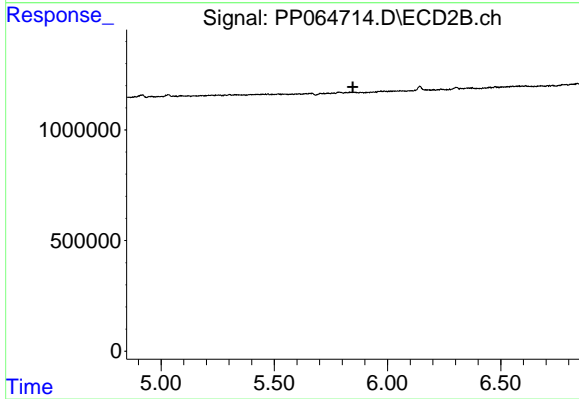
#9 AR-1221-2

R.T.: 3.746 min  
 Delta R.T.: -0.003 min  
 Response: 616636  
 Conc: 29.90 ng/ml



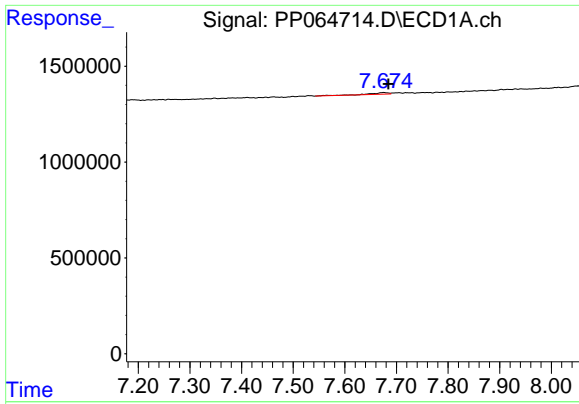
#28 AR-1254-3

R.T.: 6.979 min  
 Delta R.T.: -0.003 min  
 Response: 329097  
 Conc: 3.88 ng/ml



#28 AR-1254-3

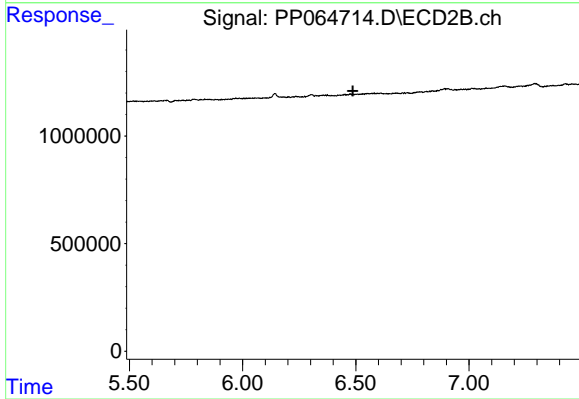
R.T.: 0.000 min  
 Exp R.T.: 5.847 min  
 Response: 0  
 Conc: N.D.



#30 AR-1254-5

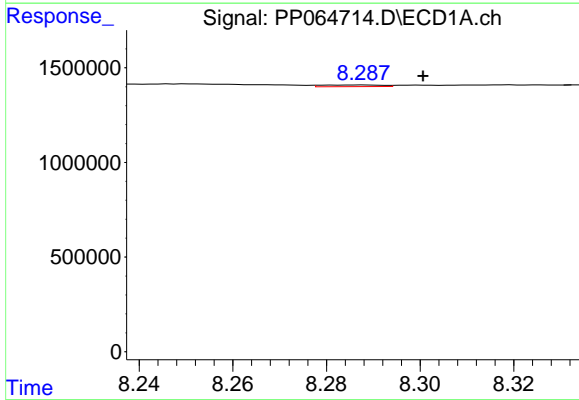
R.T.: 7.675 min  
 Delta R.T.: -0.009 min  
 Response: 219335  
 Conc: 3.98 ng/ml

Instrument :  
 ECD\_P  
 ClientSampleId :  
 I.BLK



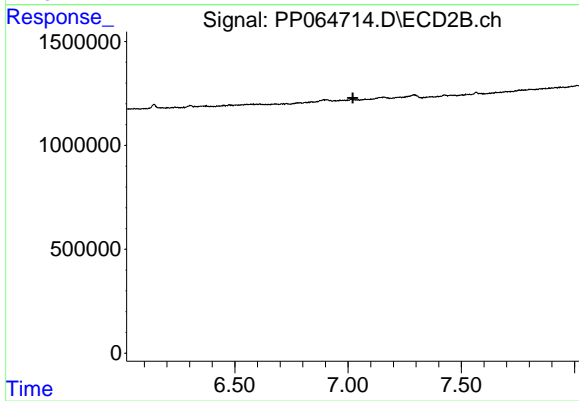
#30 AR-1254-5

R.T.: 0.000 min  
 Exp R.T. : 6.487 min  
 Response: 0  
 Conc: N.D.



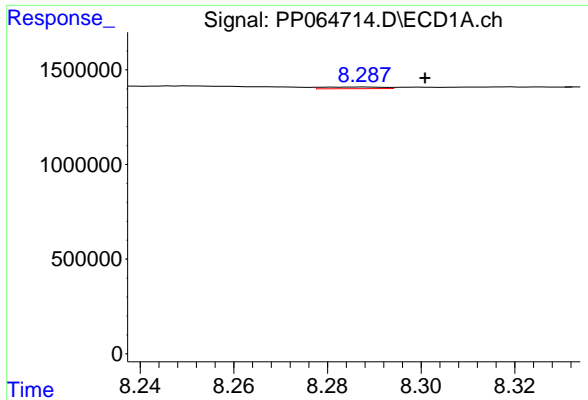
#35 AR-1260-5

R.T.: 8.287 min  
 Delta R.T.: -0.013 min  
 Response: 75961  
 Conc: 0.81 ng/ml



#35 AR-1260-5

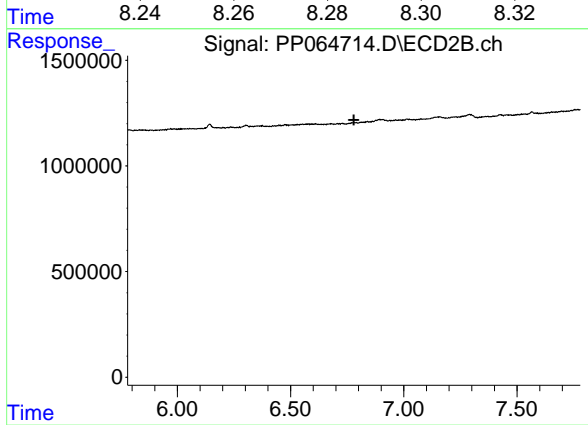
R.T.: 0.000 min  
 Exp R.T. : 7.021 min  
 Response: 0  
 Conc: N.D.



#37 AR-1262-2

R.T.: 8.287 min  
Delta R.T.: -0.014 min  
Response: 75961  
Conc: 0.78 ng/ml

Instrument :  
ECD\_P  
ClientSampleId :  
I.BLK



#37 AR-1262-2

R.T.: 0.000 min  
Exp R.T. : 6.780 min  
Response: 0  
Conc: N.D.