

Data Path : Z:\pestpcbsrv\HPCHEM1\ECD\_P\Data\PP050422\  
 Data File : PP046976.D  
 Signal(s) : Signal #1: ECD1A.ch Signal #2: ECD2B.ch  
 Acq On : 04 May 2022 09:39  
 Operator : YP\AJ  
 Sample : AR1660CCC500  
 Misc :  
 ALS Vial : 3 Sample Multiplier: 1

Instrument :  
 ECD\_P  
 ClientSampleId :  
 AR1660CCC500

Integration File signal 1: autoint1.e  
 Integration File signal 2: autoint2.e  
 Quant Time: May 04 17:28:01 2022  
 Quant Method : Z:\pestpcbsrv\HPCHEM1\ECD\_P\methods\PP042222.M  
 Quant Title : GC EXTRACTABLES  
 QLast Update : Tue May 03 11:45:42 2022  
 Response via : Initial Calibration  
 Integrator: ChemStation

Volume Inj. : 2 µl  
 Signal #1 Phase : ZB-MR1 Signal #2 Phase: ZB-MR2  
 Signal #1 Info : 30Mx0.32mmx 0.50µ Signal #2 Info : 30M x 0.32mm x 0.25µm

Compound	RT#1	RT#2	Resp#1	Resp#2	ng/ml	ng/ml
System Monitoring Compounds						
1) SA Tetrachlo...	3.858	3.124	118.1E6	174.1E6	48.926	53.067
2) SA Decachlor...	9.931f	8.435	68732698	112.0E6	46.709	46.936
Target Compounds						
3) L1 AR-1016-1	5.101	4.253	37008511	61504978	491.470	535.362
4) L1 AR-1016-2	5.124	4.271	53775726	90447625	472.250	533.092
5) L1 AR-1016-3	5.190	4.454	32131915	46287321	449.490	528.724
6) L1 AR-1016-4	5.295	4.503	27317369	37203162	454.366	534.373
7) L1 AR-1016-5	5.613	4.726	25400830	48818215	479.738	573.976
8) L2 AR-1221-1	4.078	3.346	3588122	5942535	130.106	134.578
9) L2 AR-1221-2	4.175	3.435	4400548	8680132	216.743	256.998
10) L2 AR-1221-3	4.253	3.513	19394318	32023336	297.519	322.369
11) L3 AR-1232-1	4.253	3.513	19394318	32023336	396.119	422.135
12) L3 AR-1232-2	4.812	4.271	27354034	90447625	1126.891	1254.607
13) L3 AR-1232-3	5.124	4.454	53775726	46287321	1138.548	1271.294
14) L3 AR-1232-4	5.295	4.545	27317369	45237759	1122.683	1420.062 #
15) L3 AR-1232-5	5.396	4.726	21118652	48818215	1269.263	1694.712 #
16) L4 AR-1242-1	5.124	4.253	53775726	61504978	848.145	623.885 #
17) L4 AR-1242-2	5.124	4.271	53775726	90447625	564.453	624.458
18) L4 AR-1242-3	5.190	4.454	32131915	46287321	536.737	622.816
19) L4 AR-1242-4	5.295	4.545	27317369	45237759	540.120	633.404
20) L4 AR-1242-5	6.093	5.098f	1044326	42171425	20.725	437.053 #
21) L5 AR-1248-1	5.101	4.271	37008511	90447625	885.475	1316.255 #
22) L5 AR-1248-2	5.396	4.503	21118652	37203162	357.315	397.928
23) L5 AR-1248-3	5.613	4.545	25400830	45237759	363.641	463.395 #
24) L5 AR-1248-4	6.052	4.726	3581509	48818215	46.706	414.706 #
25) L5 AR-1248-5	6.093	5.141	1044326	5831760	13.427	47.856 #
26) L6 AR-1254-1	6.023	5.098	10929419	42171425	188.160	218.546
27) L6 AR-1254-2	6.260	5.258	18433188	33039582	149.567	198.408 #
28) L6 AR-1254-3	6.660	5.702	11476204	66123339	86.731	265.184 #
29) L6 AR-1254-4	6.971	5.935	6090295	10063399	61.276	58.653
30) L6 AR-1254-5	7.430f	6.382f	48440884	98507152	550.760	451.447
31) L7 AR-1260-1	6.838	5.825	40725117	86832085	482.586	545.683
32) L7 AR-1260-2	7.120	6.032	47503788	121.2E6	471.776	595.598 #
33) L7 AR-1260-3	7.514	6.192	37325313	99512616	460.739	582.571 #
34) L7 AR-1260-4	7.761	6.701	34137988	77780484	428.596	535.148
35) L7 AR-1260-5	8.101	6.971	72555550	198.6E6	456.774	565.663
36) L8 AR-1262-1	7.514	6.423f	37325313	80276192	308.809	324.962
37) L8 AR-1262-2	8.101f	6.701f	72555550	77780484	377.287	402.406
38) L8 AR-1262-3	8.441	7.273f	45516313	44835174	339.013	276.140
39) L8 AR-1262-4	8.560f	7.344f	101648	128.5E6	1.614	448.678 #
40) L8 AR-1262-5	9.187f	7.886f	17933586	42478715	259.923	323.754
41) L9 AR-1268-1	8.441	7.273f	45516313	44835174	189.353	93.567 #

Data Path : Z:\pestpcbsrv\HPCHEM1\ECD\_P\Data\PP050422\  
 Data File : PP046976.D  
 Signal(s) : Signal #1: ECD1A.ch Signal #2: ECD2B.ch  
 Acq On : 04 May 2022 09:39  
 Operator : YP\AJ  
 Sample : AR1660CCC500  
 Misc :  
 ALS Vial : 3 Sample Multiplier: 1

Instrument :  
 ECD\_P  
 ClientSampleId :  
 AR1660CCC500

Integration File signal 1: autoint1.e  
 Integration File signal 2: autoint2.e  
 Quant Time: May 04 17:28:01 2022  
 Quant Method : Z:\pestpcbsrv\HPCHEM1\ECD\_P\methods\PP042222.M  
 Quant Title : GC EXTRACTABLES  
 QLast Update : Tue May 03 11:45:42 2022  
 Response via : Initial Calibration  
 Integrator: ChemStation

Volume Inj. : 2 µl  
 Signal #1 Phase : ZB-MR1 Signal #2 Phase: ZB-MR2  
 Signal #1 Info : 30Mx0.32mmx 0.50µ Signal #2 Info : 30M x 0.32mm x 0.25µm

	Compound	RT#1	RT#2	Resp#1	Resp#2	ng/ml	ng/ml
42)	L9 AR-1268-2	8.560f	7.344f	101648	128.5E6	0.459	303.393 #
43)	L9 AR-1268-3	8.775	7.561f	64632	954707	0.336	2.699 #
44)	L9 AR-1268-4	9.187f	7.886f	17933586	42478715	232.444	288.856
45)	L9 AR-1268-5	9.601f	8.184f	6255092	9837290	11.171	9.620

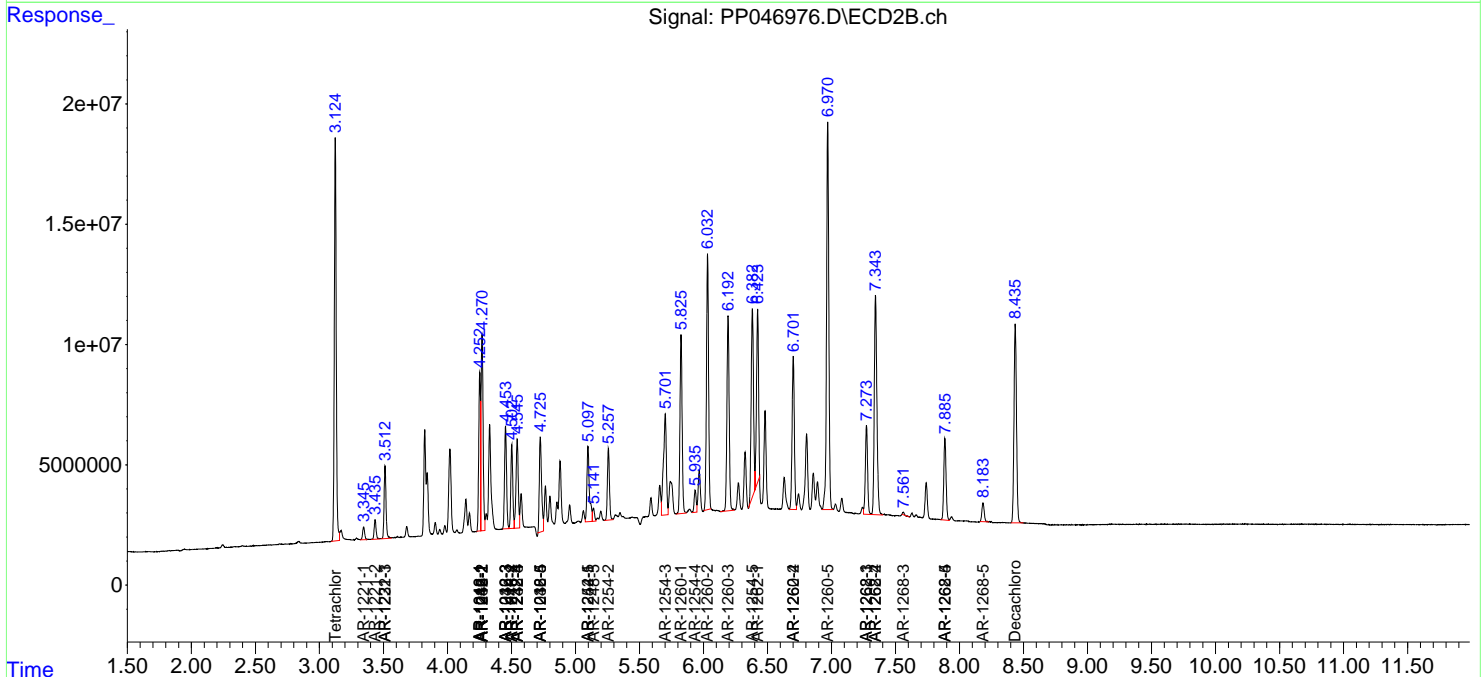
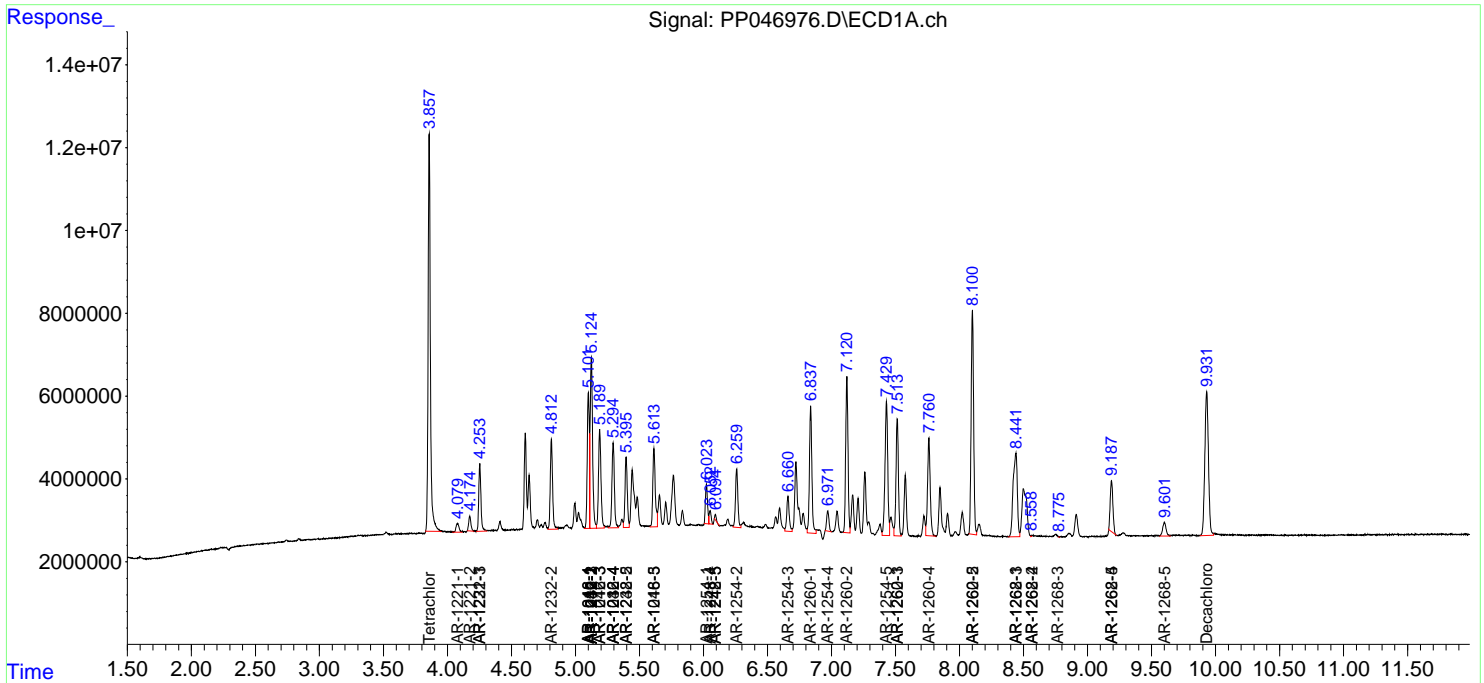
(f)=RT Delta > 1/2 Window (#)=Amounts differ by > 25% (m)=manual int.

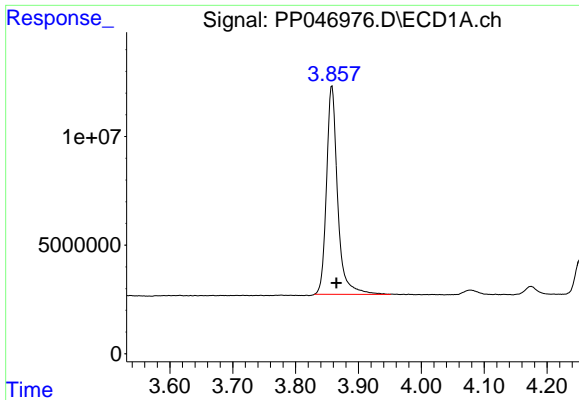
Data Path : Z:\pestpcbsrv\HPCHEM1\ECD\_P\Data\PP050422\  
 Data File : PP046976.D  
 Signal(s) : Signal #1: ECD1A.ch Signal #2: ECD2B.ch  
 Acq On : 04 May 2022 09:39  
 Operator : YP\AJ  
 Sample : AR1660CCC500  
 Misc :  
 ALS Vial : 3 Sample Multiplier: 1

Instrument :  
 ECD\_P  
 ClientSampleId :  
 AR1660CCC500

Integration File signal 1: autoint1.e  
 Integration File signal 2: autoint2.e  
 Quant Time: May 04 17:28:01 2022  
 Quant Method : Z:\pestpcbsrv\HPCHEM1\ECD\_P\methods\PP042222.M  
 Quant Title : GC EXTRACTABLES  
 QLast Update : Tue May 03 11:45:42 2022  
 Response via : Initial Calibration  
 Integrator: ChemStation

Volume Inj. : 2 µl  
 Signal #1 Phase : ZB-MR1 Signal #2 Phase: ZB-MR2  
 Signal #1 Info : 30Mx0.32mmx 0.50µ Signal #2 Info : 30M x 0.32mm x 0.25µm

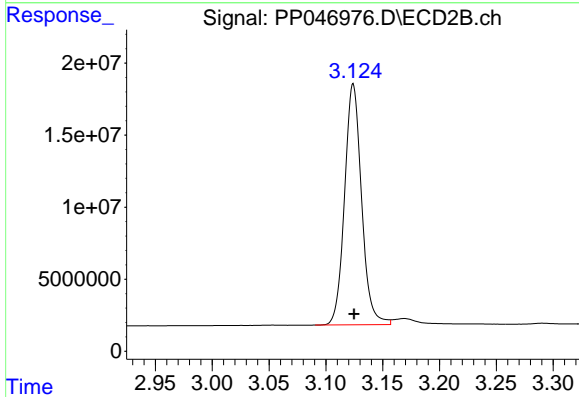




#1 Tetrachloro-m-xylene

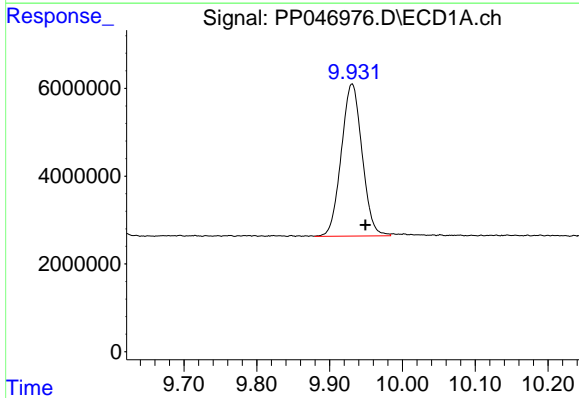
R.T.: 3.858 min  
 Delta R.T.: -0.007 min  
 Response: 118104459  
 Conc: 48.93 ng/ml

Instrument :  
 ECD\_P  
 ClientSampleId :  
 AR1660CCC500



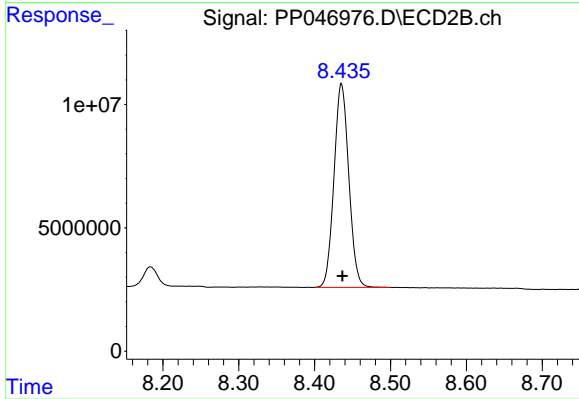
#1 Tetrachloro-m-xylene

R.T.: 3.124 min  
 Delta R.T.: 0.000 min  
 Response: 174079156  
 Conc: 53.07 ng/ml



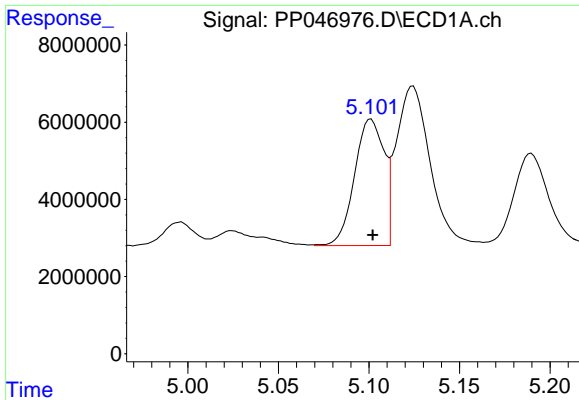
#2 Decachlorobiphenyl

R.T.: 9.931 min  
 Delta R.T.: -0.018 min  
 Response: 68732698  
 Conc: 46.71 ng/ml



#2 Decachlorobiphenyl

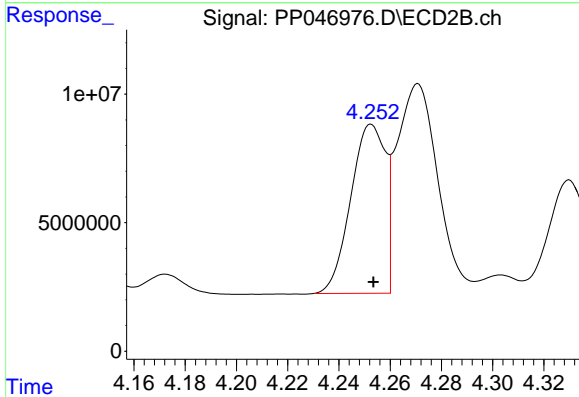
R.T.: 8.435 min  
 Delta R.T.: -0.001 min  
 Response: 111957451  
 Conc: 46.94 ng/ml



#3 AR-1016-1

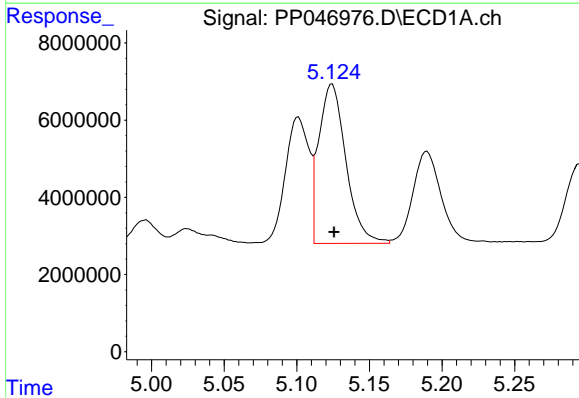
R.T.: 5.101 min  
 Delta R.T.: -0.001 min  
 Response: 37008511  
 Conc: 491.47 ng/ml

Instrument :  
 ECD\_P  
 ClientSampleId :  
 AR1660CCC500



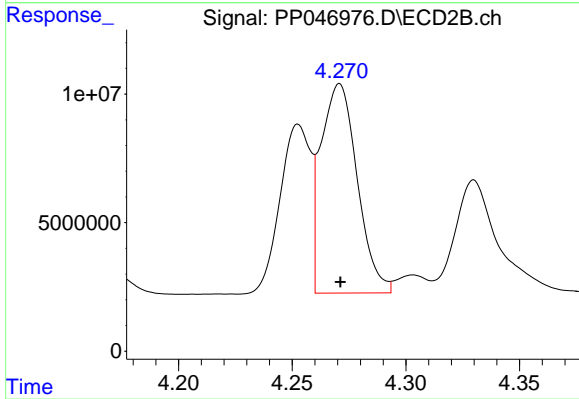
#3 AR-1016-1

R.T.: 4.253 min  
 Delta R.T.: 0.000 min  
 Response: 61504978  
 Conc: 535.36 ng/ml



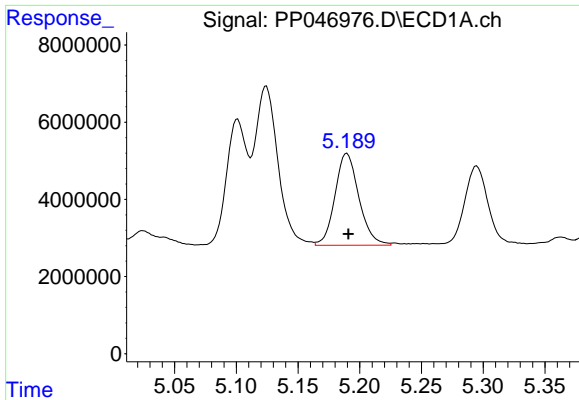
#4 AR-1016-2

R.T.: 5.124 min  
 Delta R.T.: -0.001 min  
 Response: 53775726  
 Conc: 472.25 ng/ml



#4 AR-1016-2

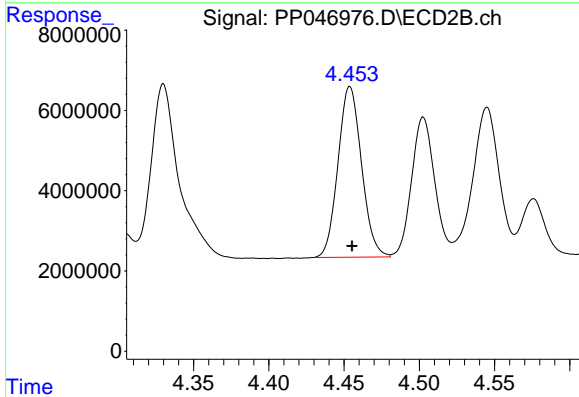
R.T.: 4.271 min  
 Delta R.T.: 0.000 min  
 Response: 90447625  
 Conc: 533.09 ng/ml



#5 AR-1016-3

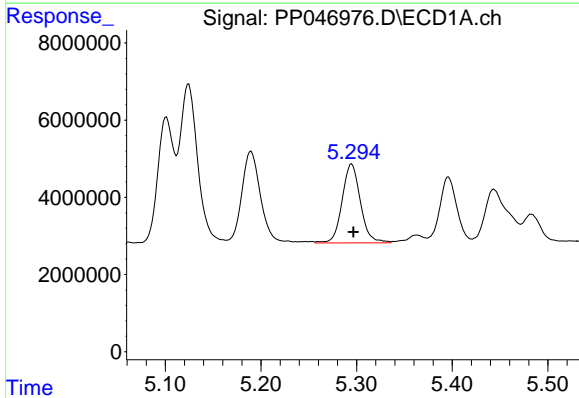
R.T.: 5.190 min  
Delta R.T.: -0.001 min  
Response: 32131915  
Conc: 449.49 ng/ml

Instrument :  
ECD\_P  
ClientSampleId :  
AR1660CCC500



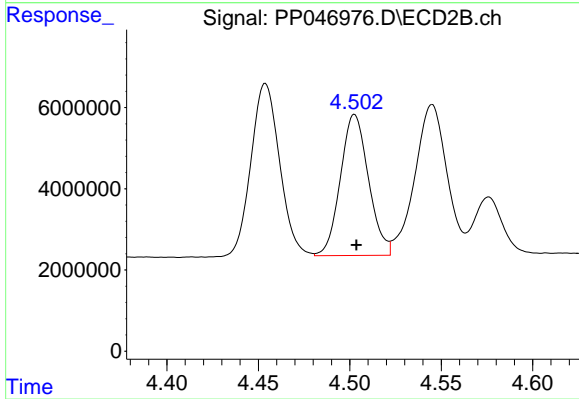
#5 AR-1016-3

R.T.: 4.454 min  
Delta R.T.: -0.001 min  
Response: 46287321  
Conc: 528.72 ng/ml



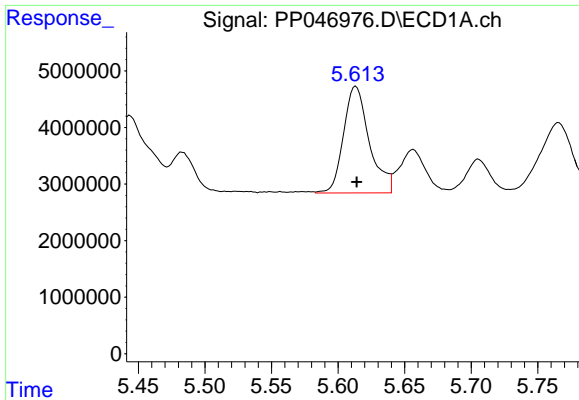
#6 AR-1016-4

R.T.: 5.295 min  
Delta R.T.: -0.002 min  
Response: 27317369  
Conc: 454.37 ng/ml



#6 AR-1016-4

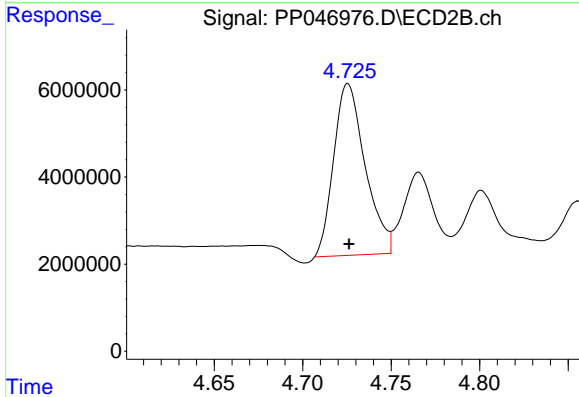
R.T.: 4.503 min  
Delta R.T.: -0.001 min  
Response: 37203162  
Conc: 534.37 ng/ml



#7 AR-1016-5

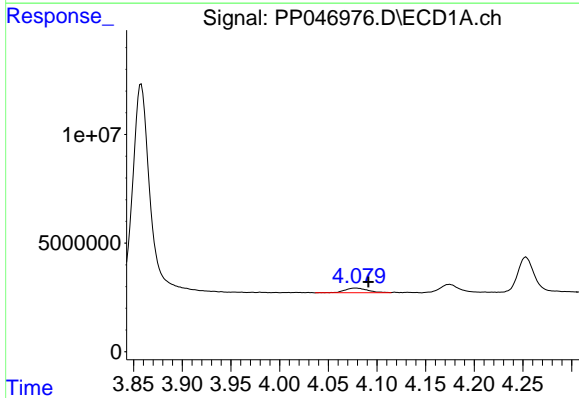
R.T.: 5.613 min  
Delta R.T.: 0.000 min  
Response: 25400830  
Conc: 479.74 ng/ml

Instrument :  
ECD\_P  
ClientSampleId :  
AR1660CCC500



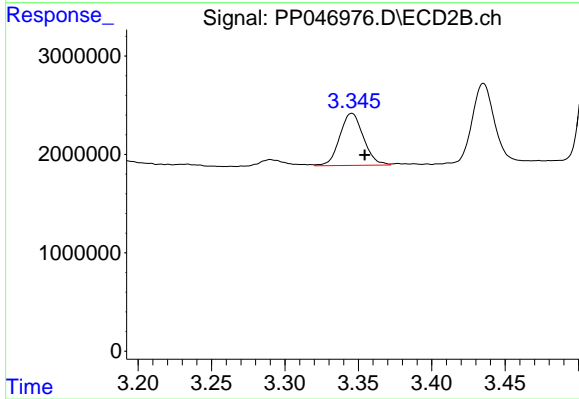
#7 AR-1016-5

R.T.: 4.726 min  
Delta R.T.: 0.000 min  
Response: 48818215  
Conc: 573.98 ng/ml



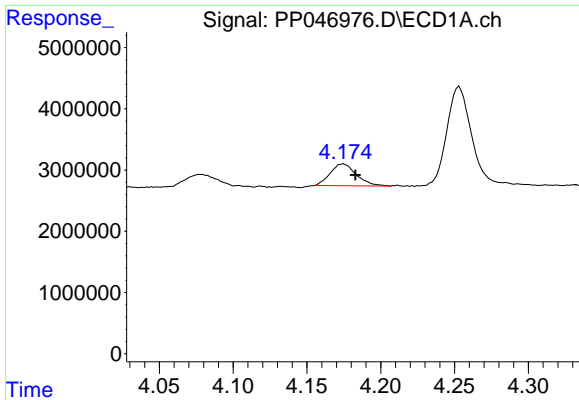
#8 AR-1221-1

R.T.: 4.078 min  
Delta R.T.: -0.013 min  
Response: 3588122  
Conc: 130.11 ng/ml



#8 AR-1221-1

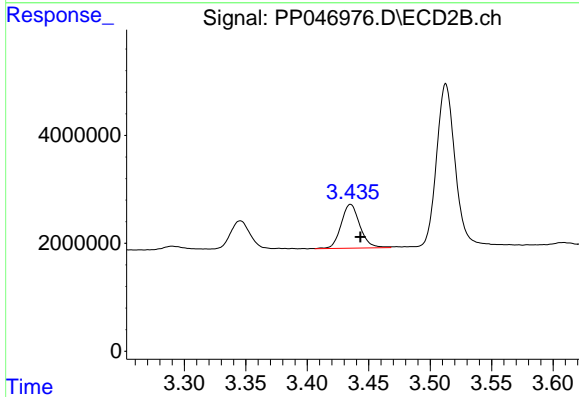
R.T.: 3.346 min  
Delta R.T.: -0.009 min  
Response: 5942535  
Conc: 134.58 ng/ml



#9 AR-1221-2

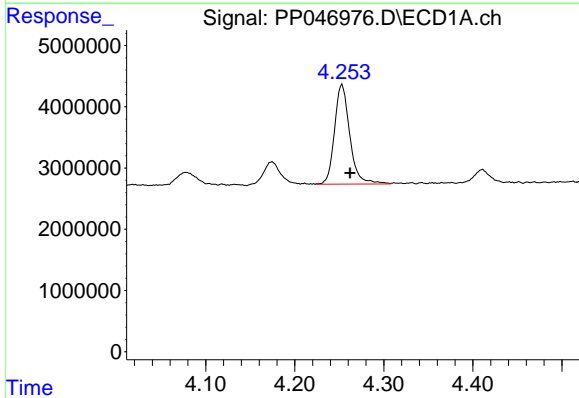
R.T.: 4.175 min  
 Delta R.T.: -0.008 min  
 Response: 4400548  
 Conc: 216.74 ng/ml

Instrument :  
 ECD\_P  
 ClientSampleId :  
 AR1660CCC500



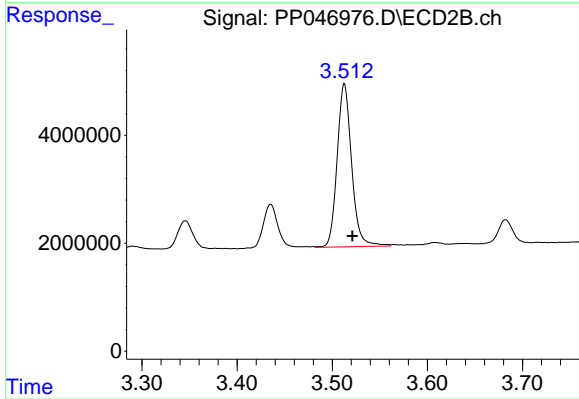
#9 AR-1221-2

R.T.: 3.435 min  
 Delta R.T.: -0.008 min  
 Response: 8680132  
 Conc: 257.00 ng/ml



#10 AR-1221-3

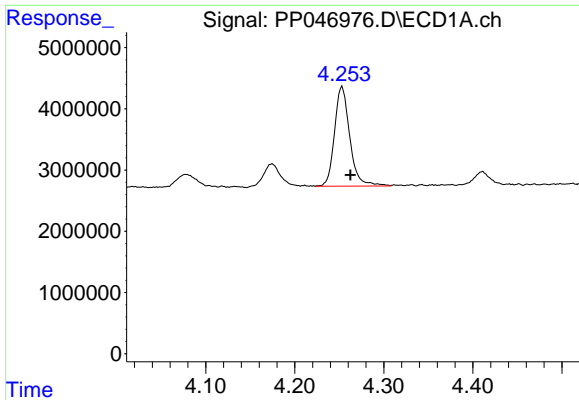
R.T.: 4.253 min  
 Delta R.T.: -0.009 min  
 Response: 19394318  
 Conc: 297.52 ng/ml



#10 AR-1221-3

R.T.: 3.513 min  
 Delta R.T.: -0.009 min  
 Response: 32023336  
 Conc: 322.37 ng/ml

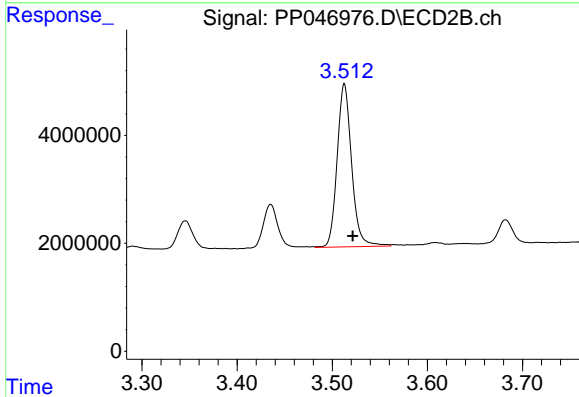




#11 AR-1232-1

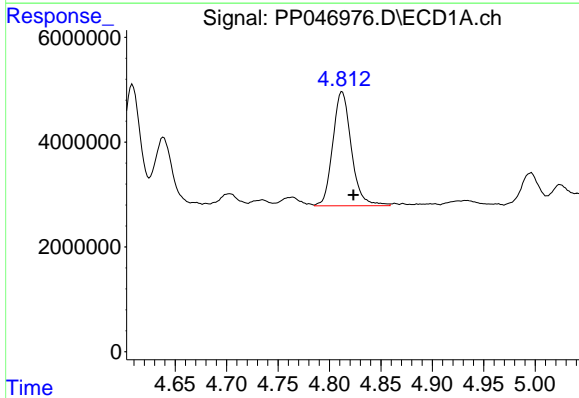
R.T.: 4.253 min  
 Delta R.T.: -0.009 min  
 Response: 19394318  
 Conc: 396.12 ng/ml

Instrument :  
 ECD\_P  
 ClientSampleId :  
 AR1660CCC500



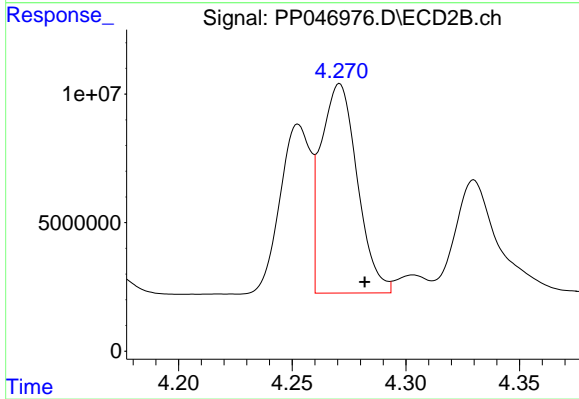
#11 AR-1232-1

R.T.: 3.513 min  
 Delta R.T.: -0.009 min  
 Response: 32023336  
 Conc: 422.14 ng/ml



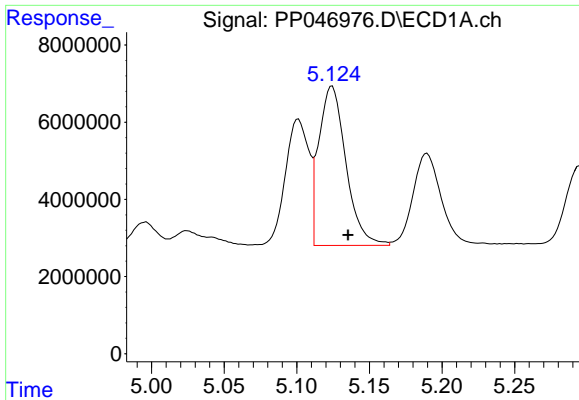
#12 AR-1232-2

R.T.: 4.812 min  
 Delta R.T.: -0.011 min  
 Response: 27354034  
 Conc: 1126.89 ng/ml



#12 AR-1232-2

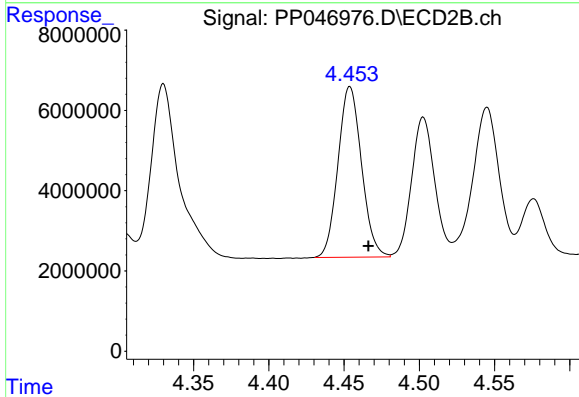
R.T.: 4.271 min  
 Delta R.T.: -0.011 min  
 Response: 90447625  
 Conc: 1254.61 ng/ml



#13 AR-1232-3

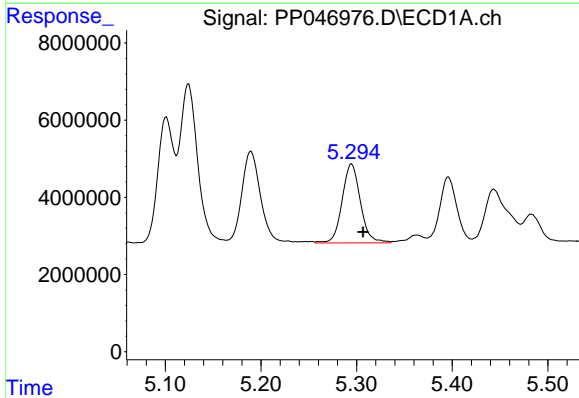
R.T.: 5.124 min  
 Delta R.T.: -0.011 min  
 Response: 53775726  
 Conc: 1138.55 ng/m

Instrument :  
 ECD\_P  
 ClientSampleId :  
 AR1660CCC500



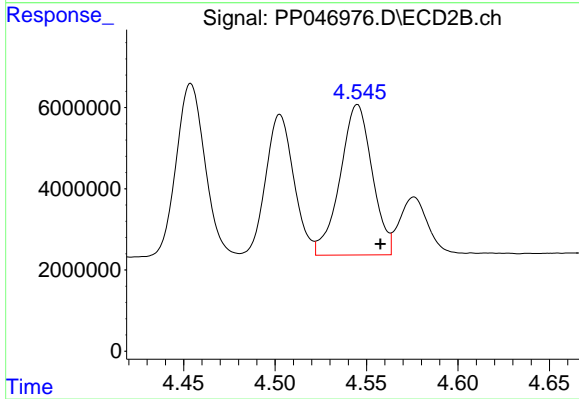
#13 AR-1232-3

R.T.: 4.454 min  
 Delta R.T.: -0.012 min  
 Response: 46287321  
 Conc: 1271.29 ng/ml



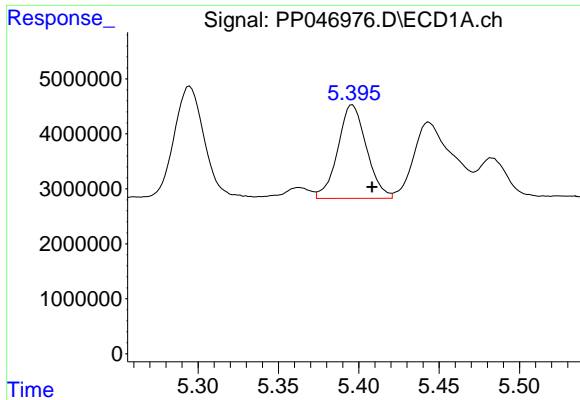
#14 AR-1232-4

R.T.: 5.295 min  
 Delta R.T.: -0.012 min  
 Response: 27317369  
 Conc: 1122.68 ng/ml



#14 AR-1232-4

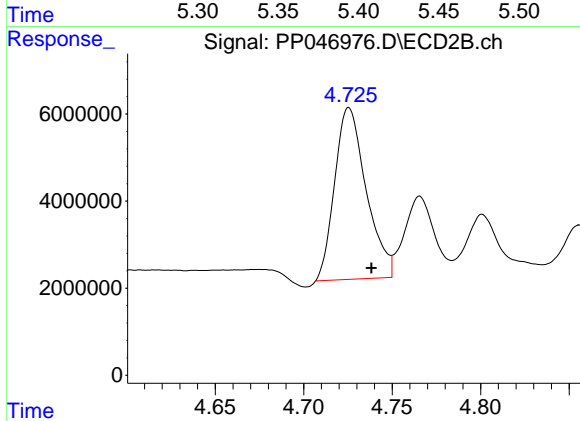
R.T.: 4.545 min  
 Delta R.T.: -0.013 min  
 Response: 45237759  
 Conc: 1420.06 ng/ml



#15 AR-1232-5

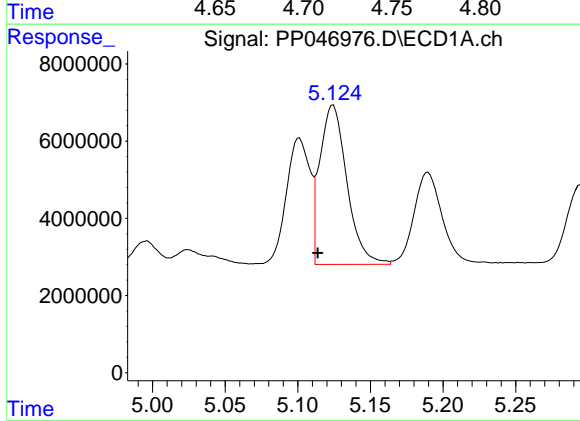
R.T.: 5.396 min  
 Delta R.T.: -0.012 min  
 Response: 21118652  
 Conc: 1269.26 ng/ml

Instrument :  
 ECD\_P  
 ClientSampleId :  
 AR1660CCC500



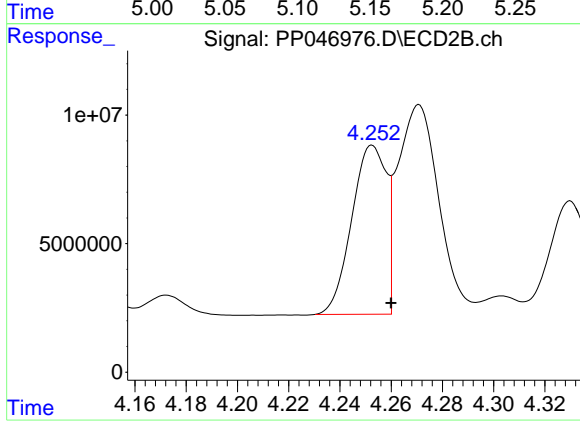
#15 AR-1232-5

R.T.: 4.726 min  
 Delta R.T.: -0.013 min  
 Response: 48818215  
 Conc: 1694.71 ng/ml



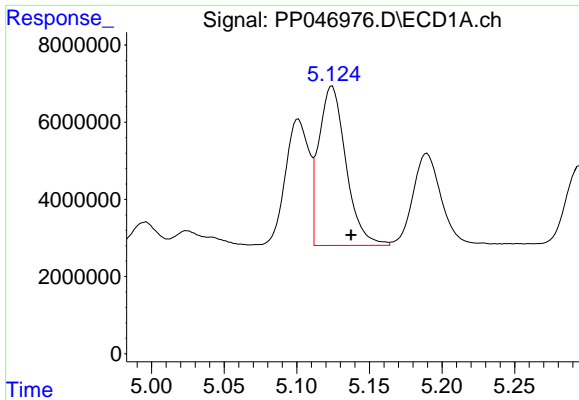
#16 AR-1242-1

R.T.: 5.124 min  
 Delta R.T.: 0.010 min  
 Response: 53775726  
 Conc: 848.14 ng/ml



#16 AR-1242-1

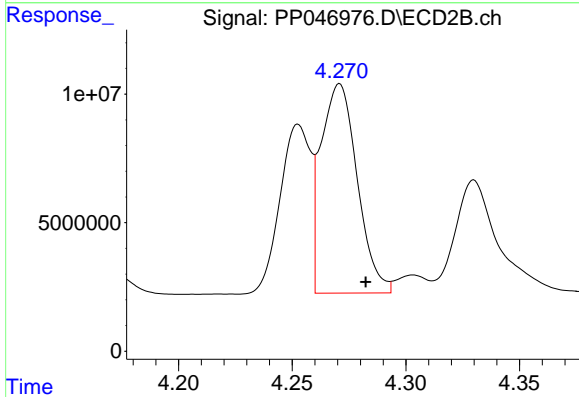
R.T.: 4.253 min  
 Delta R.T.: -0.007 min  
 Response: 61504978  
 Conc: 623.88 ng/ml



#17 AR-1242-2

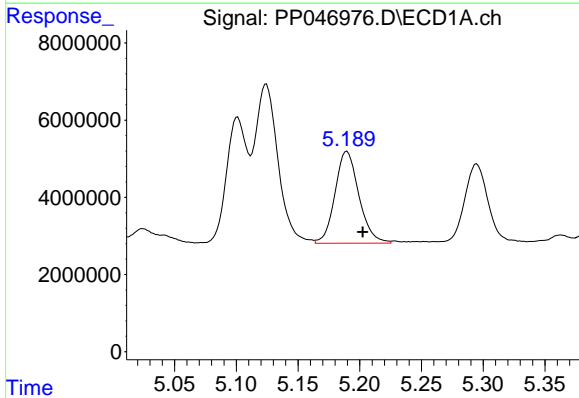
R.T.: 5.124 min  
 Delta R.T.: -0.013 min  
 Response: 53775726  
 Conc: 564.45 ng/ml

Instrument :  
 ECD\_P  
 ClientSampleId :  
 AR1660CCC500



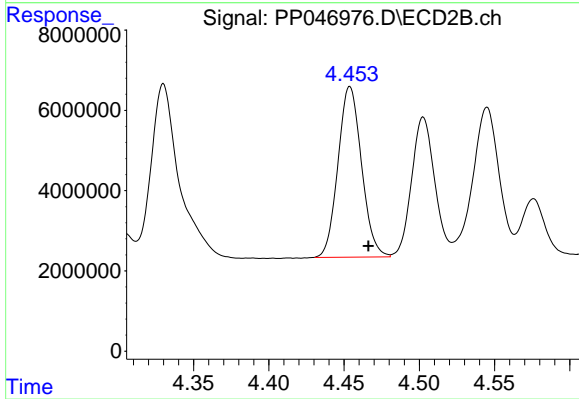
#17 AR-1242-2

R.T.: 4.271 min  
 Delta R.T.: -0.011 min  
 Response: 90447625  
 Conc: 624.46 ng/ml



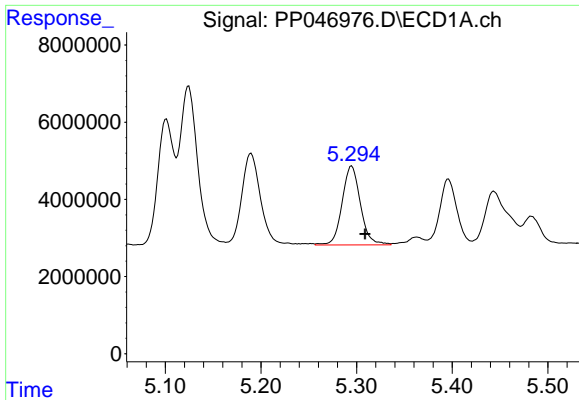
#18 AR-1242-3

R.T.: 5.190 min  
 Delta R.T.: -0.013 min  
 Response: 32131915  
 Conc: 536.74 ng/ml



#18 AR-1242-3

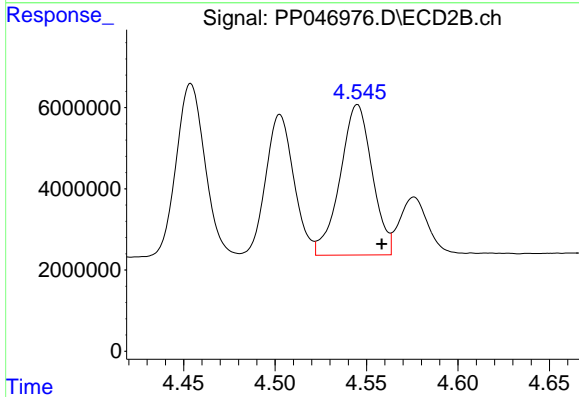
R.T.: 4.454 min  
 Delta R.T.: -0.012 min  
 Response: 46287321  
 Conc: 622.82 ng/ml



#19 AR-1242-4

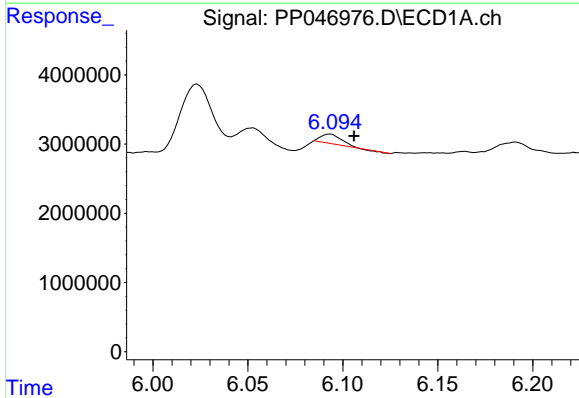
R.T.: 5.295 min  
 Delta R.T.: -0.014 min  
 Response: 27317369  
 Conc: 540.12 ng/ml

Instrument :  
 ECD\_P  
 ClientSampleId :  
 AR1660CCC500



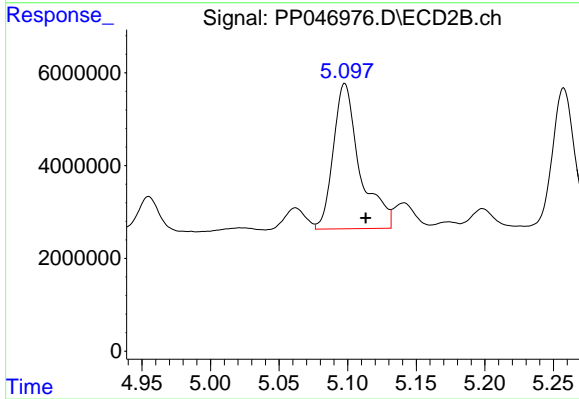
#19 AR-1242-4

R.T.: 4.545 min  
 Delta R.T.: -0.013 min  
 Response: 45237759  
 Conc: 633.40 ng/ml



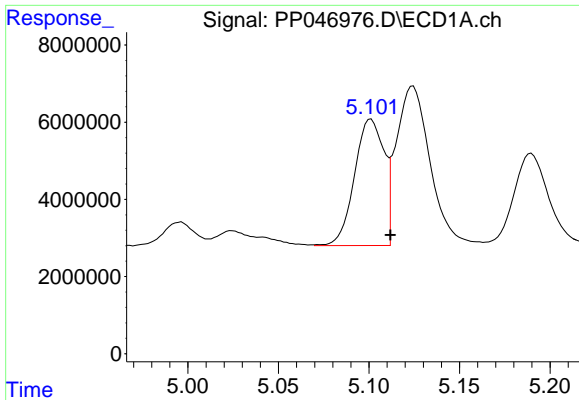
#20 AR-1242-5

R.T.: 6.093 min  
 Delta R.T.: -0.013 min  
 Response: 1044326  
 Conc: 20.72 ng/ml



#20 AR-1242-5

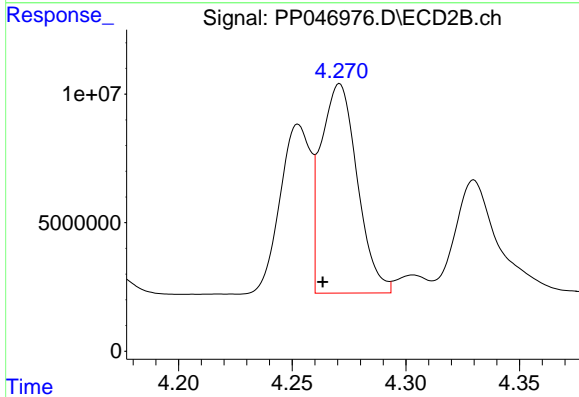
R.T.: 5.098 min  
 Delta R.T.: -0.015 min  
 Response: 42171425  
 Conc: 437.05 ng/ml



#21 AR-1248-1

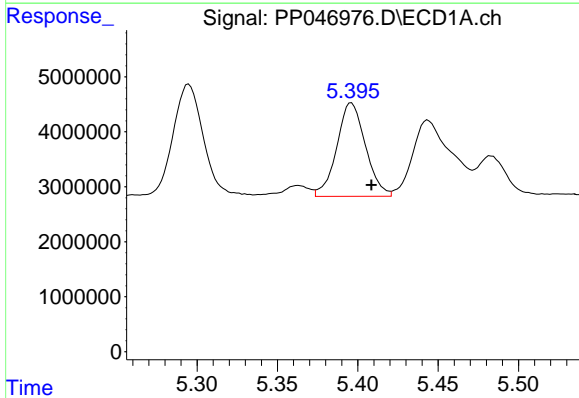
R.T.: 5.101 min  
 Delta R.T.: -0.011 min  
 Response: 37008511  
 Conc: 885.48 ng/ml

Instrument :  
 ECD\_P  
 ClientSampleId :  
 AR1660CCC500



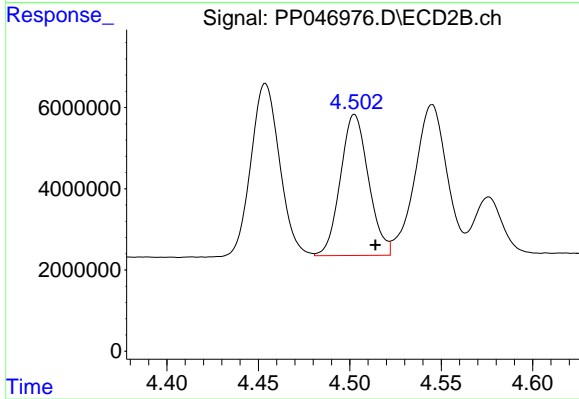
#21 AR-1248-1

R.T.: 4.271 min  
 Delta R.T.: 0.007 min  
 Response: 90447625  
 Conc: 1316.25 ng/ml



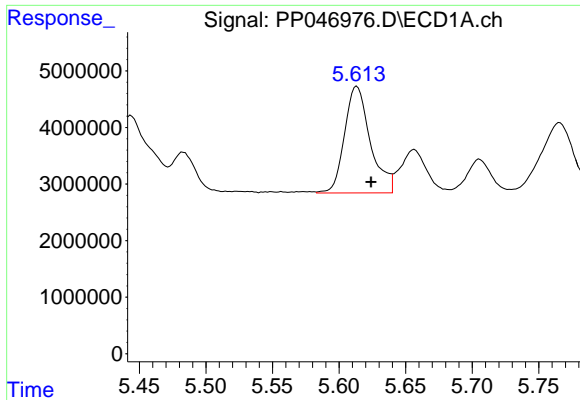
#22 AR-1248-2

R.T.: 5.396 min  
 Delta R.T.: -0.012 min  
 Response: 21118652  
 Conc: 357.32 ng/ml



#22 AR-1248-2

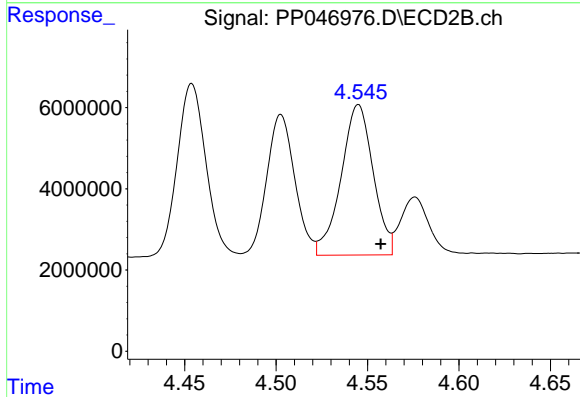
R.T.: 4.503 min  
 Delta R.T.: -0.011 min  
 Response: 37203162  
 Conc: 397.93 ng/ml



#23 AR-1248-3

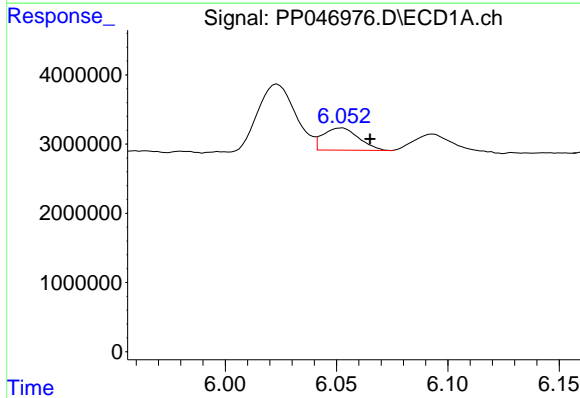
R.T.: 5.613 min  
 Delta R.T.: -0.011 min  
 Response: 25400830  
 Conc: 363.64 ng/ml

Instrument :  
 ECD\_P  
 ClientSampleId :  
 AR1660CCC500



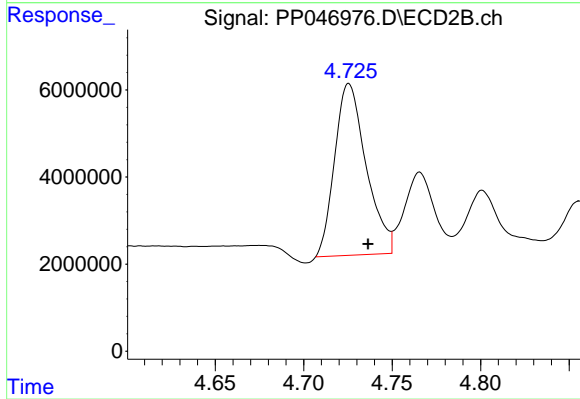
#23 AR-1248-3

R.T.: 4.545 min  
 Delta R.T.: -0.012 min  
 Response: 45237759  
 Conc: 463.40 ng/ml



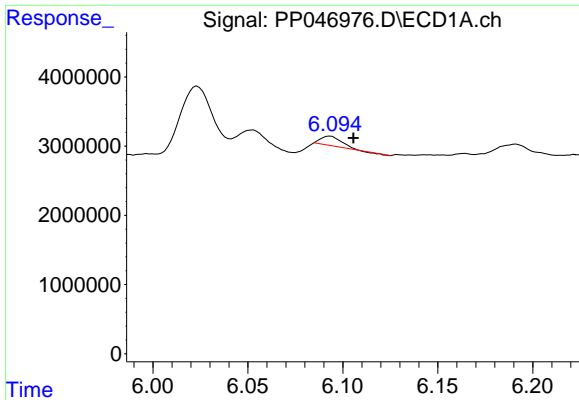
#24 AR-1248-4

R.T.: 6.052 min  
 Delta R.T.: -0.013 min  
 Response: 3581509  
 Conc: 46.71 ng/ml



#24 AR-1248-4

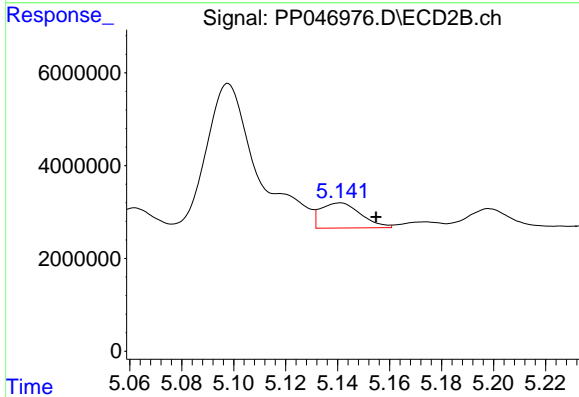
R.T.: 4.726 min  
 Delta R.T.: -0.011 min  
 Response: 48818215  
 Conc: 414.71 ng/ml



#25 AR-1248-5

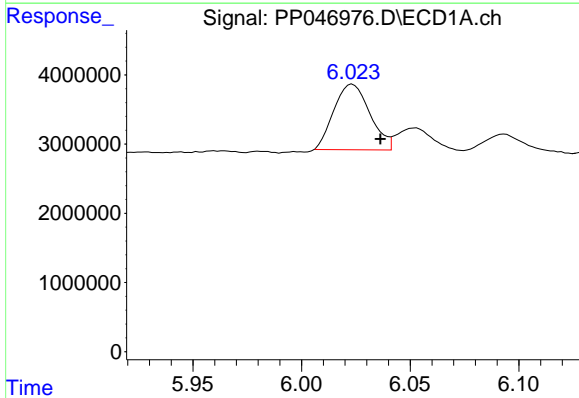
R.T.: 6.093 min  
 Delta R.T.: -0.012 min  
 Response: 1044326  
 Conc: 13.43 ng/ml

Instrument :  
 ECD\_P  
 ClientSampleId :  
 AR1660CCC500



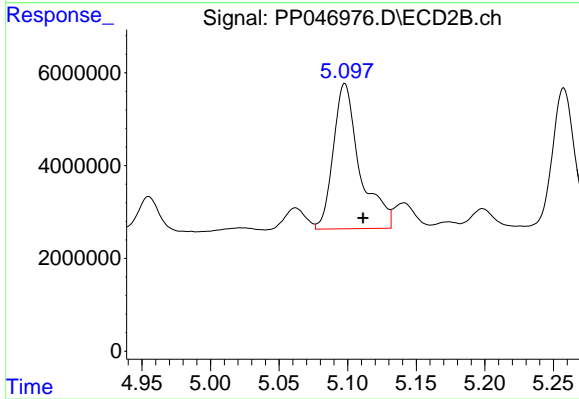
#25 AR-1248-5

R.T.: 5.141 min  
 Delta R.T.: -0.014 min  
 Response: 5831760  
 Conc: 47.86 ng/ml



#26 AR-1254-1

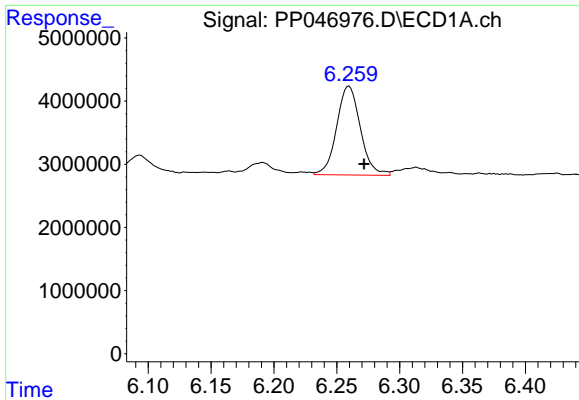
R.T.: 6.023 min  
 Delta R.T.: -0.013 min  
 Response: 10929419  
 Conc: 188.16 ng/ml



#26 AR-1254-1

R.T.: 5.098 min  
 Delta R.T.: -0.013 min  
 Response: 42171425  
 Conc: 218.55 ng/ml

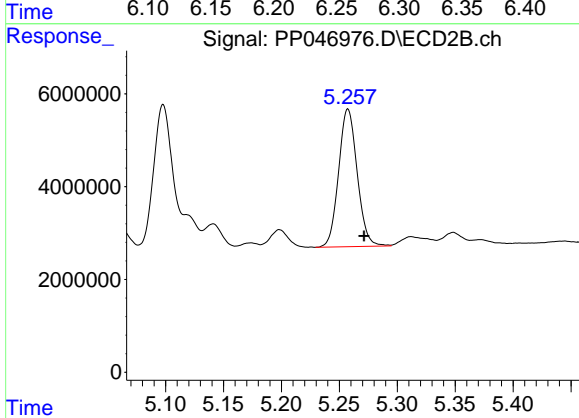




#27 AR-1254-2

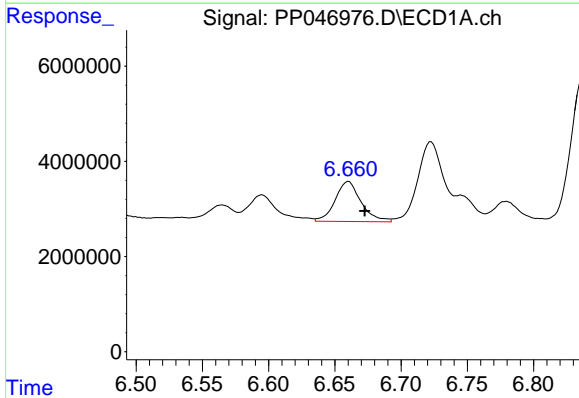
R.T.: 6.260 min  
 Delta R.T.: -0.012 min  
 Response: 18433188  
 Conc: 149.57 ng/ml

Instrument :  
 ECD\_P  
 ClientSampleId :  
 AR1660CCC500



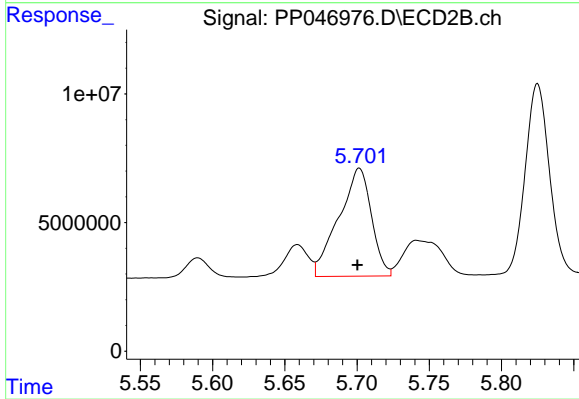
#27 AR-1254-2

R.T.: 5.258 min  
 Delta R.T.: -0.014 min  
 Response: 33039582  
 Conc: 198.41 ng/ml



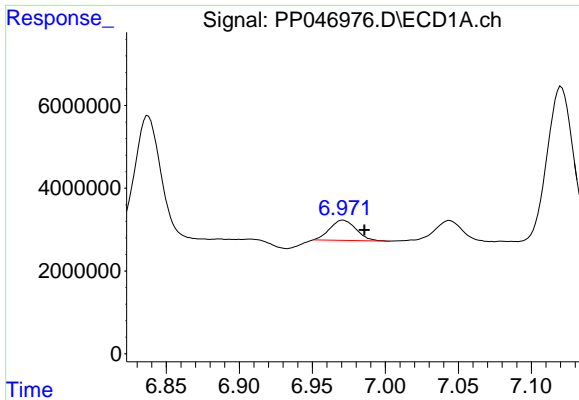
#28 AR-1254-3

R.T.: 6.660 min  
 Delta R.T.: -0.012 min  
 Response: 11476204  
 Conc: 86.73 ng/ml



#28 AR-1254-3

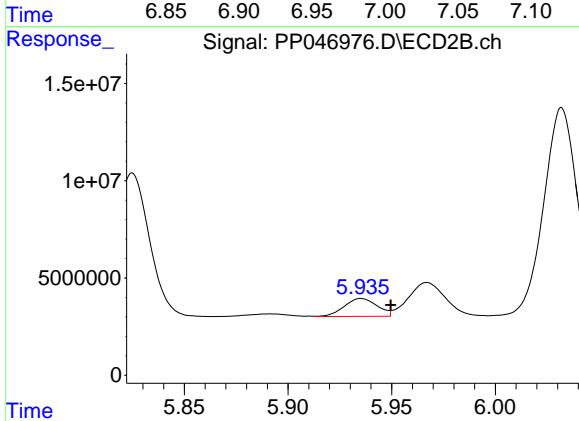
R.T.: 5.702 min  
 Delta R.T.: 0.001 min  
 Response: 66123339  
 Conc: 265.18 ng/ml



#29 AR-1254-4

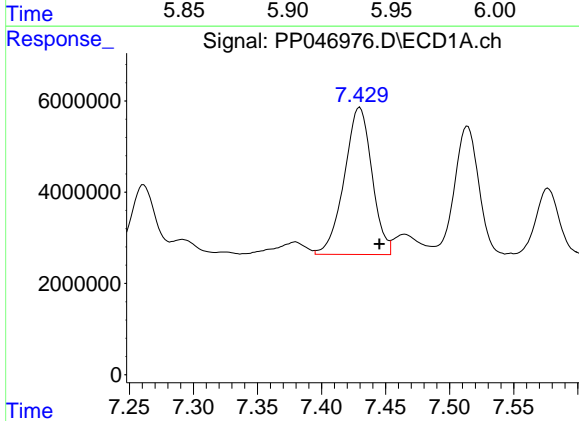
R.T.: 6.971 min  
 Delta R.T.: -0.015 min  
 Response: 6090295  
 Conc: 61.28 ng/ml

Instrument :  
 ECD\_P  
 ClientSampleId :  
 AR1660CCC500



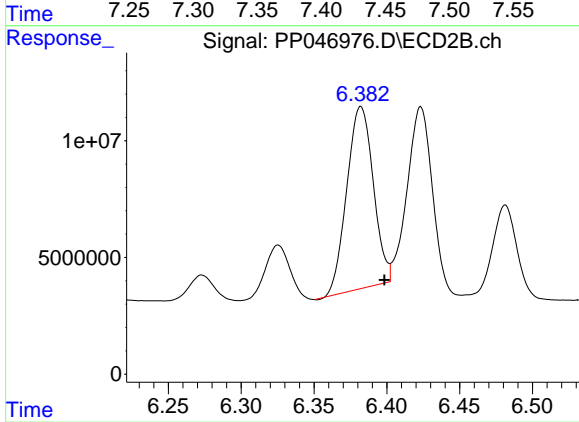
#29 AR-1254-4

R.T.: 5.935 min  
 Delta R.T.: -0.014 min  
 Response: 10063399  
 Conc: 58.65 ng/ml



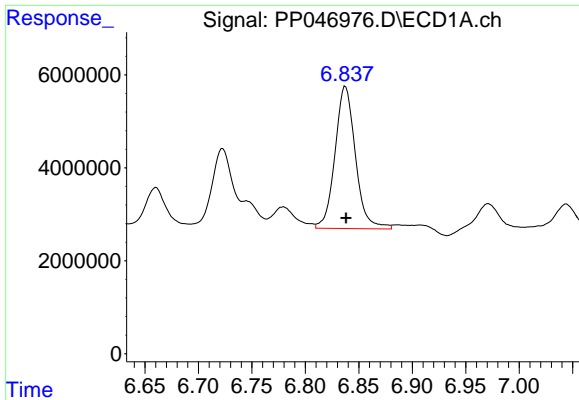
#30 AR-1254-5

R.T.: 7.430 min  
 Delta R.T.: -0.015 min  
 Response: 48440884  
 Conc: 550.76 ng/ml



#30 AR-1254-5

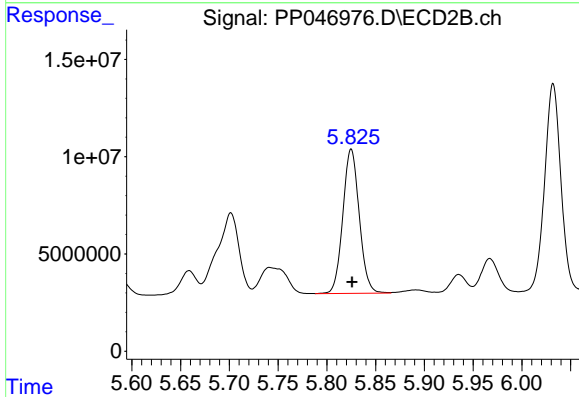
R.T.: 6.382 min  
 Delta R.T.: -0.016 min  
 Response: 98507152  
 Conc: 451.45 ng/ml



#31 AR-1260-1

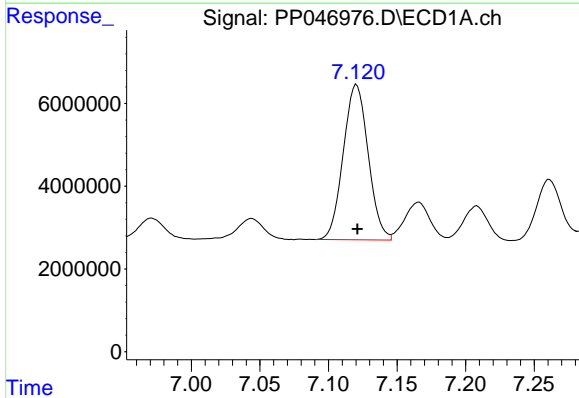
R.T.: 6.838 min  
 Delta R.T.: 0.000 min  
 Response: 40725117  
 Conc: 482.59 ng/ml

Instrument :  
 ECD\_P  
 ClientSampleId :  
 AR1660CCC500



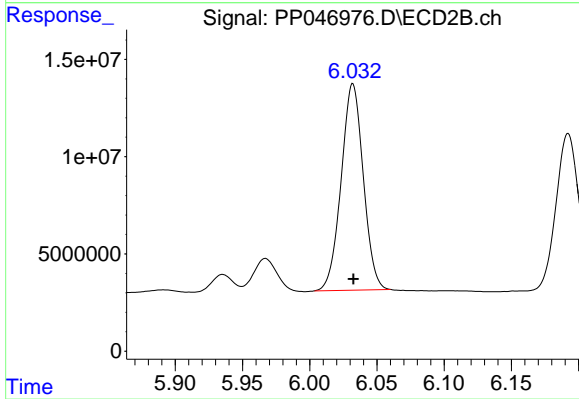
#31 AR-1260-1

R.T.: 5.825 min  
 Delta R.T.: 0.000 min  
 Response: 86832085  
 Conc: 545.68 ng/ml



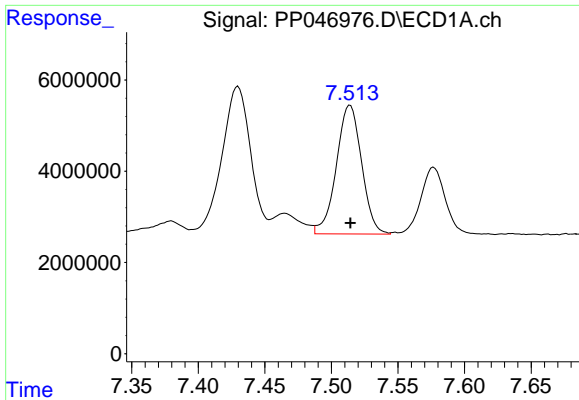
#32 AR-1260-2

R.T.: 7.120 min  
 Delta R.T.: 0.000 min  
 Response: 47503788  
 Conc: 471.78 ng/ml



#32 AR-1260-2

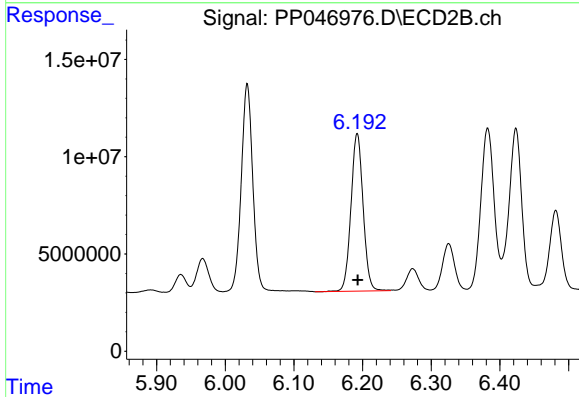
R.T.: 6.032 min  
 Delta R.T.: 0.000 min  
 Response: 121153629  
 Conc: 595.60 ng/ml



#33 AR-1260-3

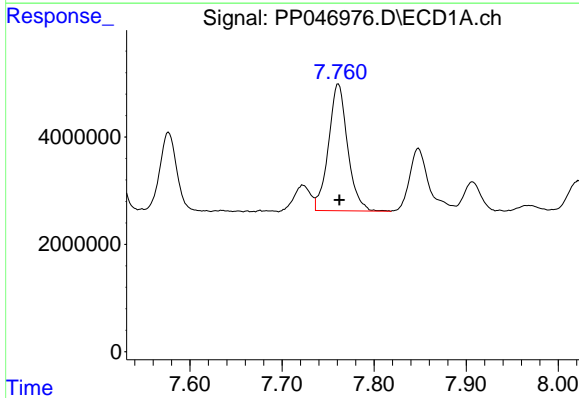
R.T.: 7.514 min  
 Delta R.T.: 0.000 min  
 Response: 37325313  
 Conc: 460.74 ng/ml

Instrument :  
 ECD\_P  
 ClientSampleId :  
 AR1660CCC500



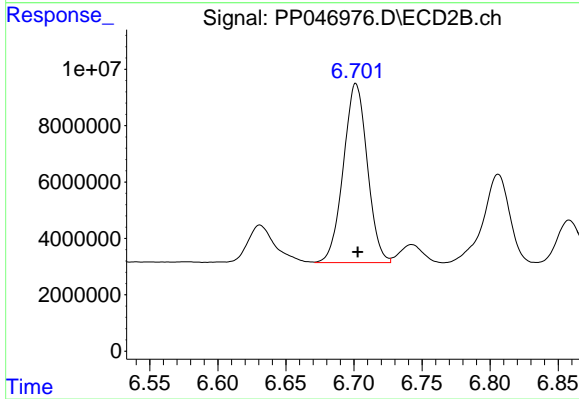
#33 AR-1260-3

R.T.: 6.192 min  
 Delta R.T.: 0.000 min  
 Response: 99512616  
 Conc: 582.57 ng/ml



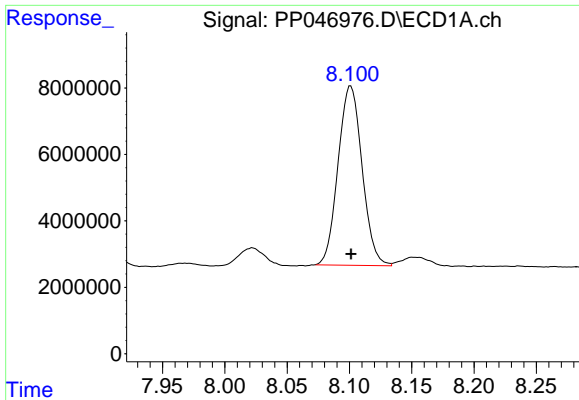
#34 AR-1260-4

R.T.: 7.761 min  
 Delta R.T.: 0.000 min  
 Response: 34137988  
 Conc: 428.60 ng/ml



#34 AR-1260-4

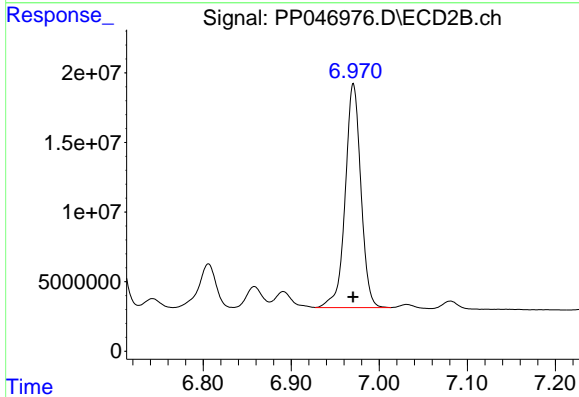
R.T.: 6.701 min  
 Delta R.T.: -0.001 min  
 Response: 77780484  
 Conc: 535.15 ng/ml



#35 AR-1260-5

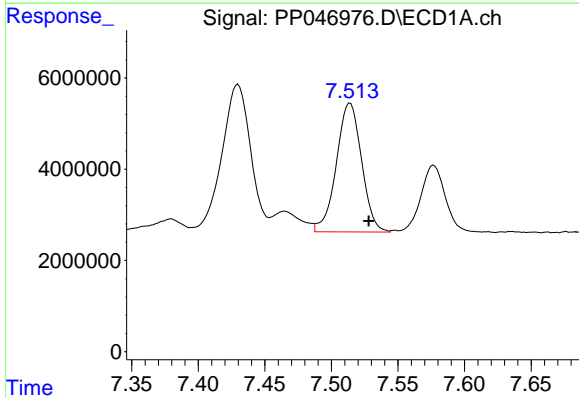
R.T.: 8.101 min  
 Delta R.T.: 0.000 min  
 Response: 72555550  
 Conc: 456.77 ng/ml

Instrument :  
 ECD\_P  
 ClientSampleId :  
 AR1660CCC500



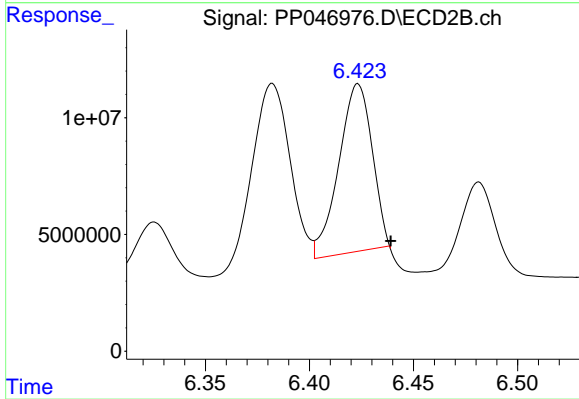
#35 AR-1260-5

R.T.: 6.971 min  
 Delta R.T.: 0.000 min  
 Response: 198617761  
 Conc: 565.66 ng/ml



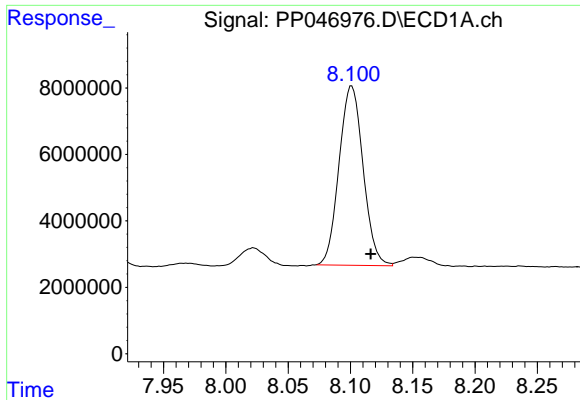
#36 AR-1262-1

R.T.: 7.514 min  
 Delta R.T.: -0.014 min  
 Response: 37325313  
 Conc: 308.81 ng/ml



#36 AR-1262-1

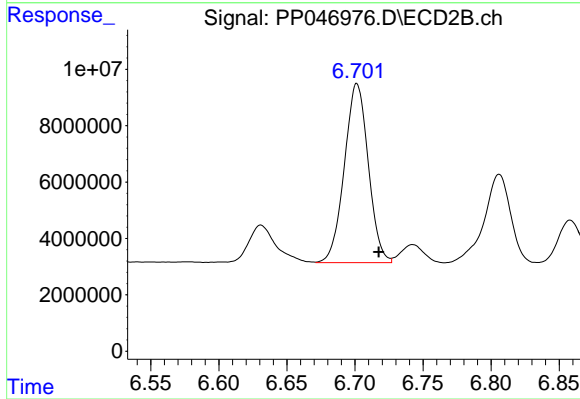
R.T.: 6.423 min  
 Delta R.T.: -0.016 min  
 Response: 80276192  
 Conc: 324.96 ng/ml



#37 AR-1262-2

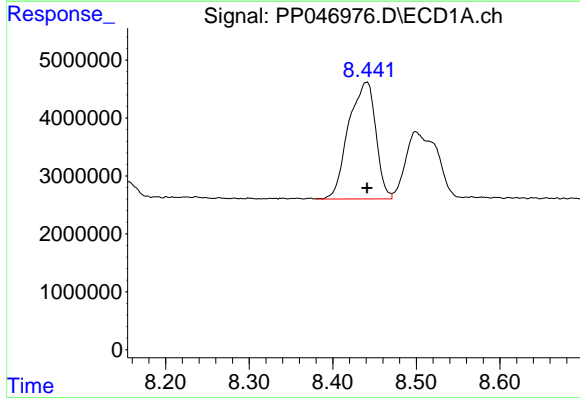
R.T.: 8.101 min  
 Delta R.T.: -0.015 min  
 Response: 72555550  
 Conc: 377.29 ng/ml

Instrument :  
 ECD\_P  
 ClientSampleId :  
 AR1660CCC500



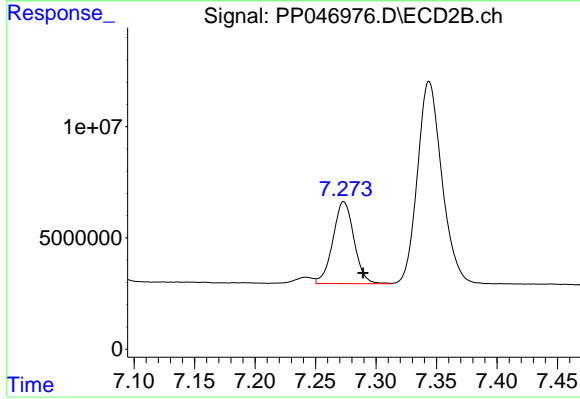
#37 AR-1262-2

R.T.: 6.701 min  
 Delta R.T.: -0.016 min  
 Response: 77780484  
 Conc: 402.41 ng/ml



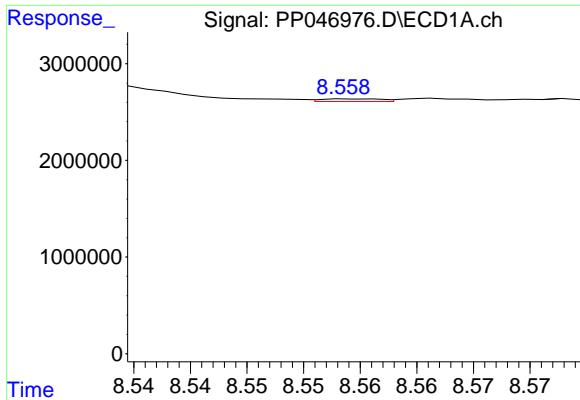
#38 AR-1262-3

R.T.: 8.441 min  
 Delta R.T.: 0.000 min  
 Response: 45516313  
 Conc: 339.01 ng/ml



#38 AR-1262-3

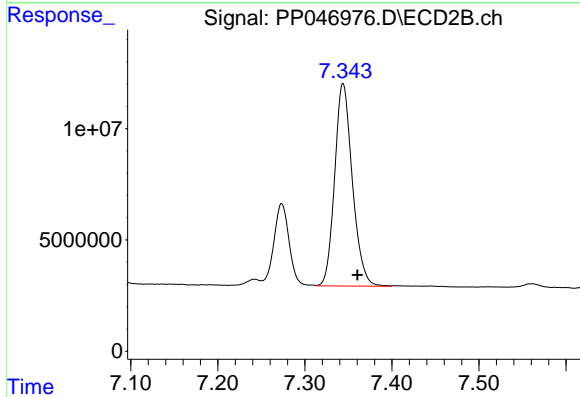
R.T.: 7.273 min  
 Delta R.T.: -0.016 min  
 Response: 44835174  
 Conc: 276.14 ng/ml



#39 AR-1262-4

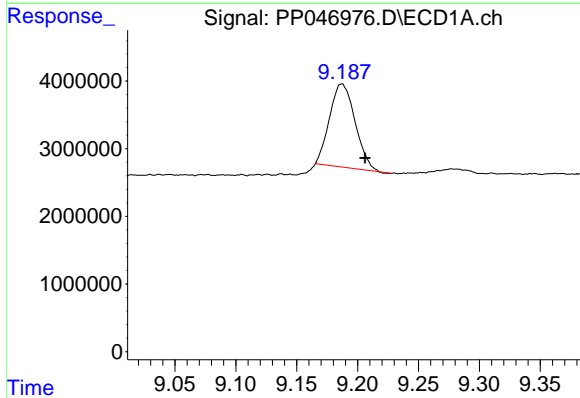
R.T.: 8.560 min  
 Delta R.T.: 0.024 min  
 Response: 101648  
 Conc: 1.61 ng/ml

Instrument :  
 ECD\_P  
 ClientSampleId :  
 AR1660CCC500



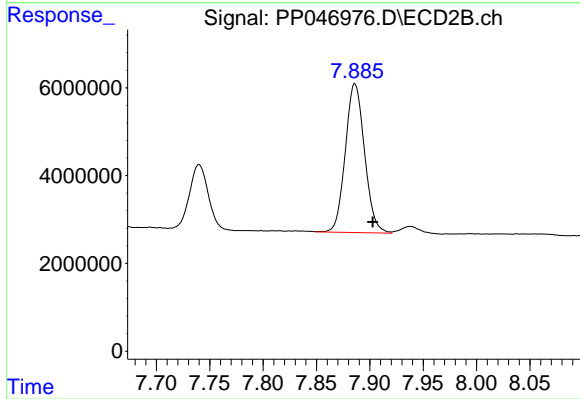
#39 AR-1262-4

R.T.: 7.344 min  
 Delta R.T.: -0.017 min  
 Response: 128500971  
 Conc: 448.68 ng/ml



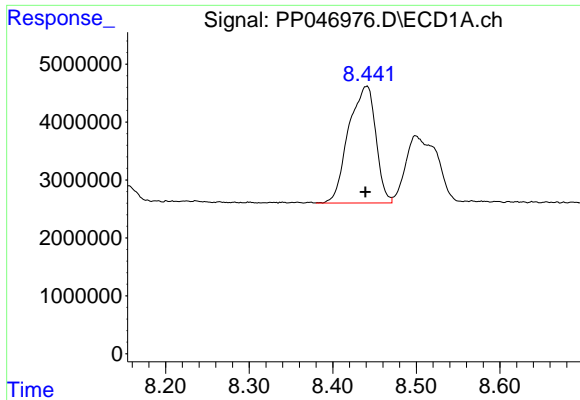
#40 AR-1262-5

R.T.: 9.187 min  
 Delta R.T.: -0.019 min  
 Response: 17933586  
 Conc: 259.92 ng/ml



#40 AR-1262-5

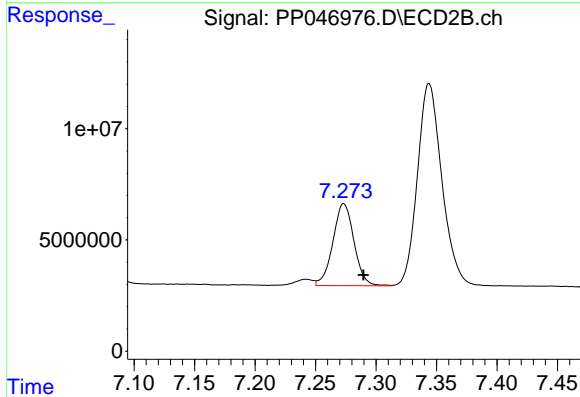
R.T.: 7.886 min  
 Delta R.T.: -0.017 min  
 Response: 42478715  
 Conc: 323.75 ng/ml



#41 AR-1268-1

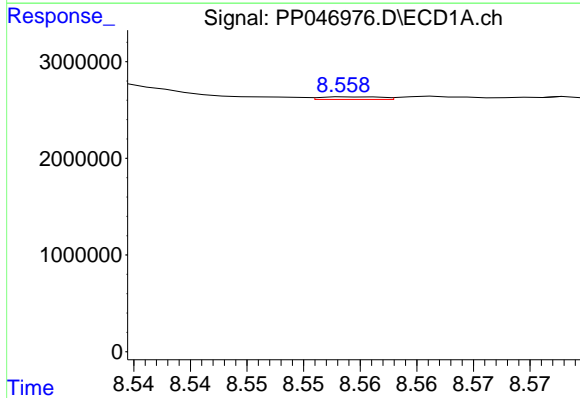
R.T.: 8.441 min  
 Delta R.T.: 0.002 min  
 Response: 45516313  
 Conc: 189.35 ng/ml

Instrument :  
 ECD\_P  
 ClientSampleId :  
 AR1660CCC500



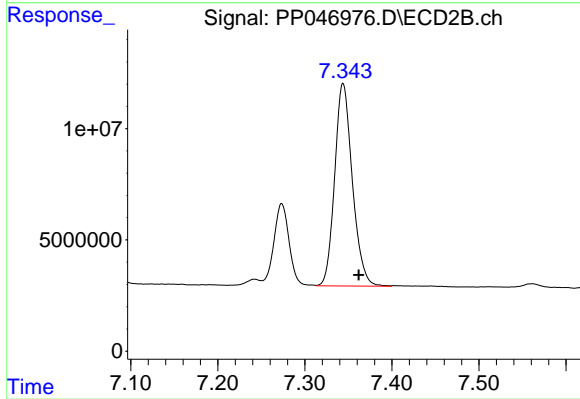
#41 AR-1268-1

R.T.: 7.273 min  
 Delta R.T.: -0.016 min  
 Response: 44835174  
 Conc: 93.57 ng/ml



#42 AR-1268-2

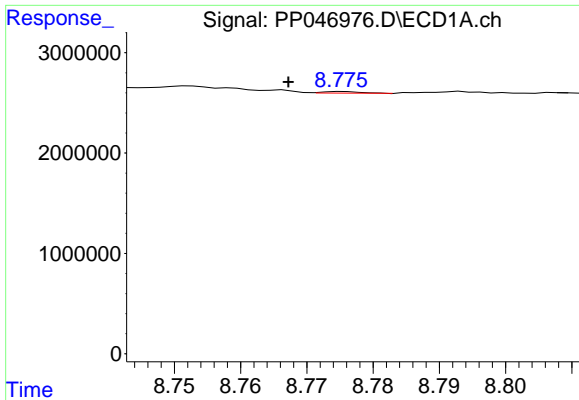
R.T.: 8.560 min  
 Delta R.T.: 0.023 min  
 Response: 101648  
 Conc: 0.46 ng/ml



#42 AR-1268-2

R.T.: 7.344 min  
 Delta R.T.: -0.018 min  
 Response: 128500971  
 Conc: 303.39 ng/ml

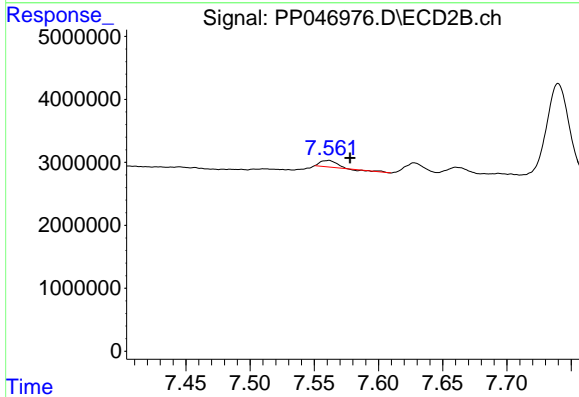




#43 AR-1268-3

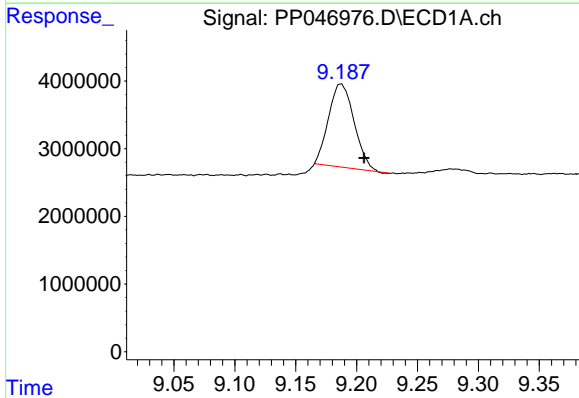
R.T.: 8.775 min  
 Delta R.T.: 0.008 min  
 Response: 64632  
 Conc: 0.34 ng/ml

Instrument :  
 ECD\_P  
 ClientSampleId :  
 AR1660CCC500



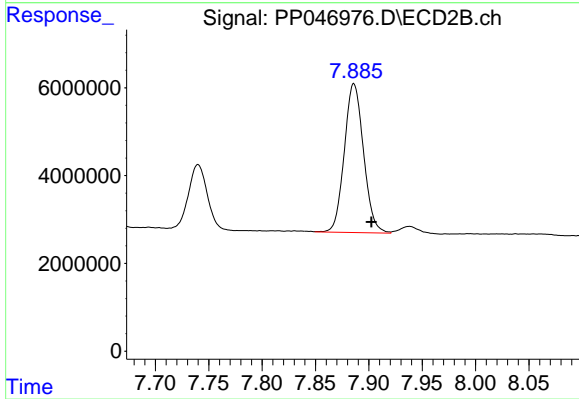
#43 AR-1268-3

R.T.: 7.561 min  
 Delta R.T.: -0.017 min  
 Response: 954707  
 Conc: 2.70 ng/ml



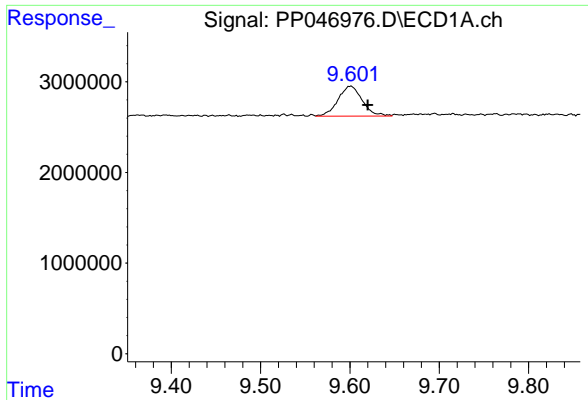
#44 AR-1268-4

R.T.: 9.187 min  
 Delta R.T.: -0.019 min  
 Response: 17933586  
 Conc: 232.44 ng/ml



#44 AR-1268-4

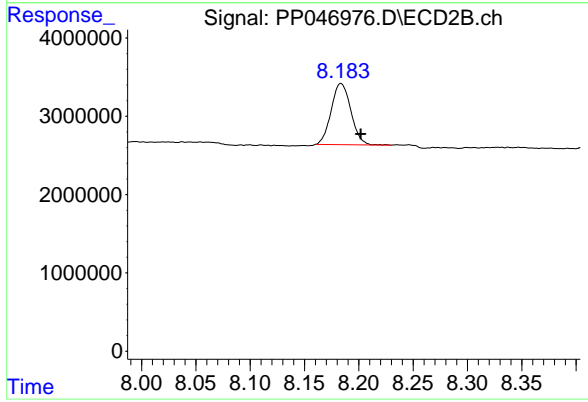
R.T.: 7.886 min  
 Delta R.T.: -0.016 min  
 Response: 42478715  
 Conc: 288.86 ng/ml



#45 AR-1268-5

R.T.: 9.601 min  
Delta R.T.: -0.019 min  
Response: 6255092  
Conc: 11.17 ng/ml

Instrument :  
ECD\_P  
ClientSampleId :  
AR1660CCC500



#45 AR-1268-5

R.T.: 8.184 min  
Delta R.T.: -0.018 min  
Response: 9837290  
Conc: 9.62 ng/ml