

Data Path : Z:\pestpcbsrv\HPCHEM1\ECD\_P\Data\PP050422\  
 Data File : PP046995.D  
 Signal(s) : Signal #1: ECD1A.ch Signal #2: ECD2B.ch  
 Acq On : 04 May 2022 17:24  
 Operator : YP\AJ  
 Sample : I.BLK  
 Misc :  
 ALS Vial : 2 Sample Multiplier: 1

Instrument :  
 ECD\_P  
 ClientSampleId :  
 I.BLK

Integration File signal 1: autoint1.e  
 Integration File signal 2: autoint2.e  
 Quant Time: May 05 05:24:35 2022  
 Quant Method : Z:\pestpcbsrv\HPCHEM1\ECD\_P\methods\PP042222.M  
 Quant Title : GC EXTRACTABLES  
 QLast Update : Tue May 03 11:45:42 2022  
 Response via : Initial Calibration  
 Integrator: ChemStation

Volume Inj. : 2 µl  
 Signal #1 Phase : ZB-MR1 Signal #2 Phase: ZB-MR2  
 Signal #1 Info : 30Mx0.32mmx 0.50µ Signal #2 Info : 30M x 0.32mm x 0.25µm

Compound	RT#1	RT#2	Resp#1	Resp#2	ng/ml	ng/ml
-----						
System Monitoring Compounds						
1) SA Tetrachlo...	3.858	3.124	56567612	82308856	23.434	25.091
2) SA Decachlor...	9.929f	8.435	33733077	53921009	22.924	22.605
Target Compounds						
3) L1 AR-1016-1	5.106	4.252	162328	16726	2.156	0.146 #
4) L1 AR-1016-2	5.132	4.269	414840	100433	3.643	0.592 #
5) L1 AR-1016-3	5.199	4.451	408878	197338	5.720	2.254 #
6) L1 AR-1016-4	5.297	4.497	287508	26255	4.782	0.377 #
7) L1 AR-1016-5	5.622	4.746f	618383	6758717	11.679	79.465 #
8) L2 AR-1221-1	4.093	3.357	52314	29253	1.897	0.662 #
9) L2 AR-1221-2	4.179	3.434	629906	1144223	31.025	33.878
10) L2 AR-1221-3	4.252	3.519	106027	206815	1.627	2.082 #
11) L3 AR-1232-1	4.252	3.519	106027	206815	2.166	2.726 #
12) L3 AR-1232-2	4.824	4.282	527914	29817	21.748	0.414 #
13) L3 AR-1232-3	5.132	4.469	414840	75211	8.783	2.066 #
14) L3 AR-1232-4	5.305	4.560	464998	243202	19.110	7.634 #
15) L3 AR-1232-5	5.413	4.746	482157	6758717	28.978	234.627 #
16) L4 AR-1242-1	5.114	4.252	406052	16726	6.404	0.170 #
17) L4 AR-1242-2	5.139	4.282	498607	29817	5.234	0.206 #
18) L4 AR-1242-3	5.204	4.469	243897	75211	4.074	1.012 #
19) L4 AR-1242-4	5.305	4.560	464998	243202	9.194	3.405 #
20) L4 AR-1242-5	6.103	5.120	498151	15531329	9.886	160.962 #
21) L5 AR-1248-1	5.114	4.269	406052	100433	9.715	1.462 #
22) L5 AR-1248-2	5.413	4.524	482157	179012	8.158	1.915 #
23) L5 AR-1248-3	5.622	4.560	618383	243202	8.853	2.491 #
24) L5 AR-1248-4	6.060	4.746	574539	6758717	7.493	57.415 #
25) L5 AR-1248-5	6.103	5.165	498151	386232	6.405	3.169 #
26) L6 AR-1254-1	6.029	5.120	519440	15531329	8.943	80.488 #
27) L6 AR-1254-2	6.267	5.260	736297	131967	5.974	0.792 #
28) L6 AR-1254-3	6.666	5.702	7854590	109984	59.361	0.441 #
29) L6 AR-1254-4	6.983	5.952	1477073	182335	14.861	1.063 #
30) L6 AR-1254-5	7.446	6.401	104229	59684	1.185	0.274 #
31) L7 AR-1260-1	6.842	5.828	1496085	163434	17.728	1.027 #
32) L7 AR-1260-2	7.120	6.042	129935	226701	1.290	1.114
33) L7 AR-1260-3	7.516	6.193	122182	341518	1.508	1.999 #
34) L7 AR-1260-4	7.759	6.703	81790	115625	1.027	0.796
35) L7 AR-1260-5	8.101	6.971	45248	322604	0.285	0.919 #
36) L8 AR-1262-1	7.528	6.448	95533	18219	0.790	0.074 #
37) L8 AR-1262-2	8.109	6.712	110461	258071	0.574	1.335 #
38) L8 AR-1262-3	8.453	7.294	59527	227765	0.443	1.403 #
39) L8 AR-1262-4	8.532	7.360	74535	158253	1.183	0.553 #
40) L8 AR-1262-5	9.198	7.894	113541	176246	1.646	1.343
41) L9 AR-1268-1	8.453	7.294	59527	227765	0.248	0.475 #

Data Path : Z:\pestpcbsrv\HPCHEM1\ECD\_P\Data\PP050422\  
 Data File : PP046995.D  
 Signal(s) : Signal #1: ECD1A.ch Signal #2: ECD2B.ch  
 Acq On : 04 May 2022 17:24  
 Operator : YP\AJ  
 Sample : I.BLK  
 Misc :  
 ALS Vial : 2 Sample Multiplier: 1

Instrument :  
 ECD\_P  
 ClientSampleId :  
 I.BLK

Integration File signal 1: autoint1.e  
 Integration File signal 2: autoint2.e  
 Quant Time: May 05 05:24:35 2022  
 Quant Method : Z:\pestpcbsrv\HPCHEM1\ECD\_P\methods\PP042222.M  
 Quant Title : GC EXTRACTABLES  
 QLast Update : Tue May 03 11:45:42 2022  
 Response via : Initial Calibration  
 Integrator: ChemStation

Volume Inj. : 2 µl  
 Signal #1 Phase : ZB-MR1 Signal #2 Phase: ZB-MR2  
 Signal #1 Info : 30Mx0.32mmx 0.50µ Signal #2 Info : 30M x 0.32mm x 0.25µm

	Compound	RT#1	RT#2	Resp#1	Resp#2	ng/ml	ng/ml
42)	L9 AR-1268-2	8.532	7.360	74535	158253	0.337	0.374
43)	L9 AR-1268-3	8.763	7.585	64794	24751	0.337	0.070 #
44)	L9 AR-1268-4	9.198	7.894	113541	176246	1.472	1.198
45)	L9 AR-1268-5	9.614	8.201	191235	33608	0.342	0.033 #

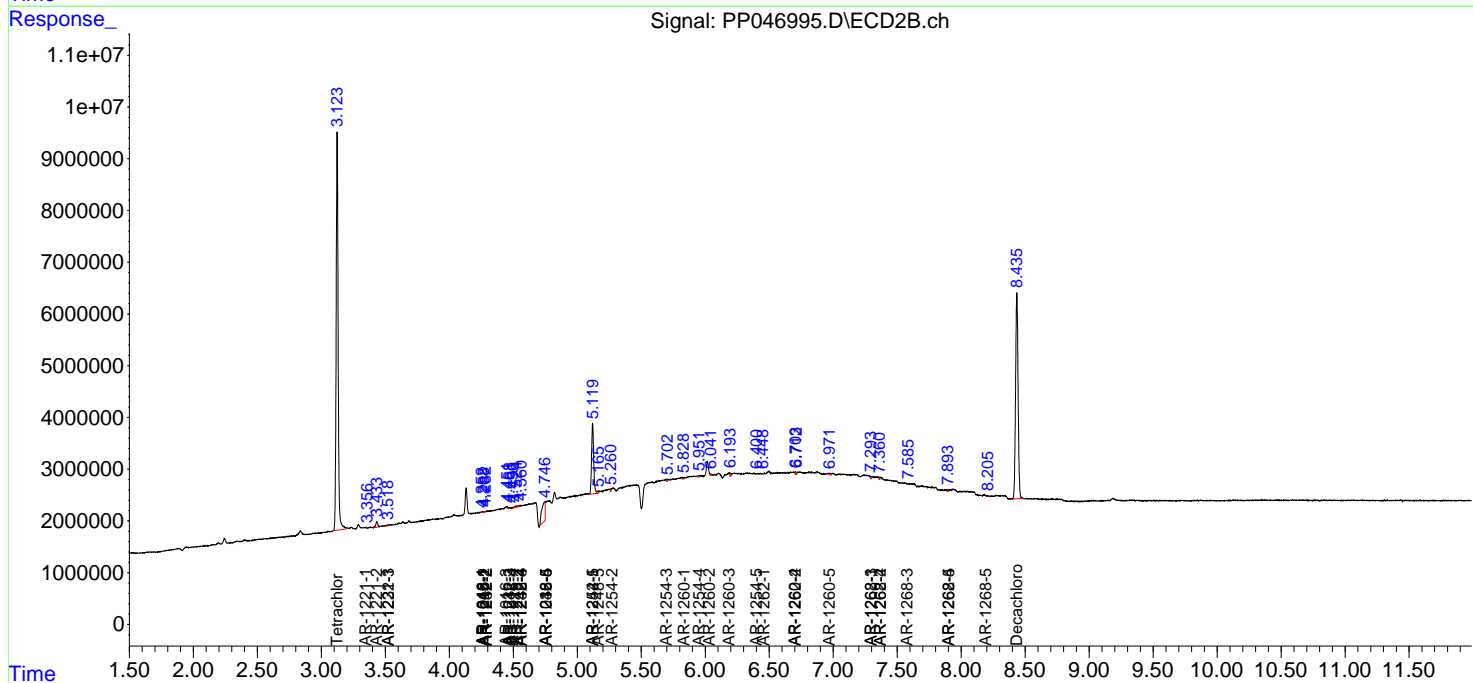
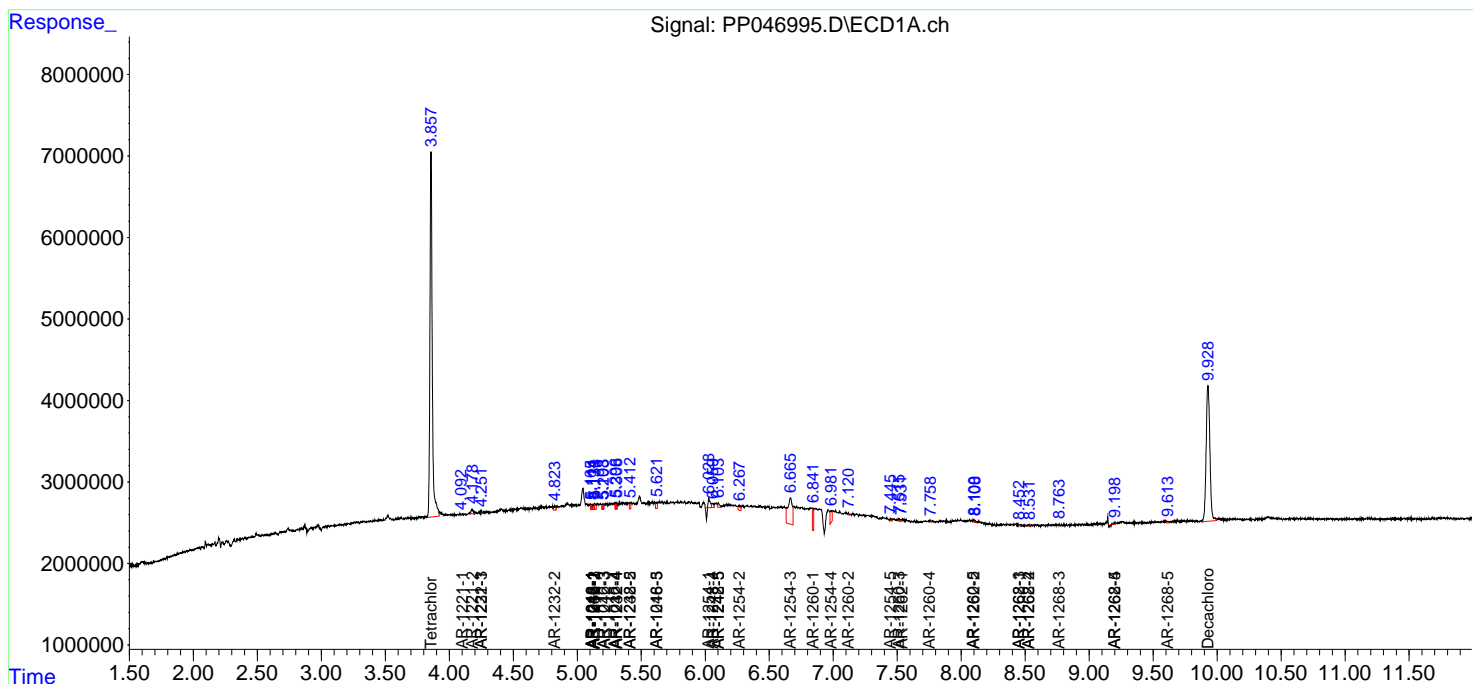
(f)=RT Delta > 1/2 Window (#)=Amounts differ by > 25% (m)=manual int.

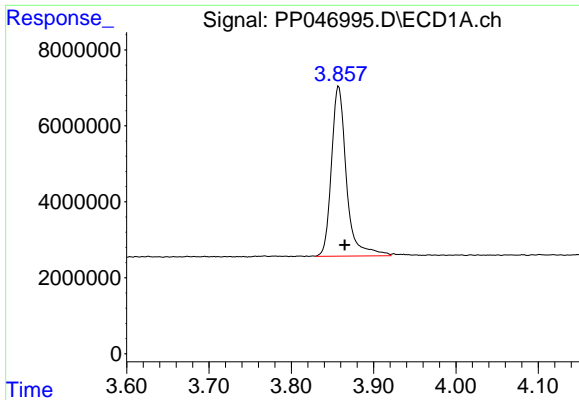
Data Path : Z:\pestpcbsrv\HPCHEM1\ECD\_P\Data\PP050422\  
 Data File : PP046995.D  
 Signal(s) : Signal #1: ECD1A.ch Signal #2: ECD2B.ch  
 Acq On : 04 May 2022 17:24  
 Operator : YP\AJ  
 Sample : I.BLK  
 Misc :  
 ALS Vial : 2 Sample Multiplier: 1

Instrument :  
 ECD\_P  
 ClientSampleId :  
 I.BLK

Integration File signal 1: autoint1.e  
 Integration File signal 2: autoint2.e  
 Quant Time: May 05 05:24:35 2022  
 Quant Method : Z:\pestpcbsrv\HPCHEM1\ECD\_P\methods\PP042222.M  
 Quant Title : GC EXTRACTABLES  
 QLast Update : Tue May 03 11:45:42 2022  
 Response via : Initial Calibration  
 Integrator: ChemStation

Volume Inj. : 2 µl  
 Signal #1 Phase : ZB-MR1 Signal #2 Phase: ZB-MR2  
 Signal #1 Info : 30Mx0.32mmx 0.50µ Signal #2 Info : 30M x 0.32mm x 0.25µm

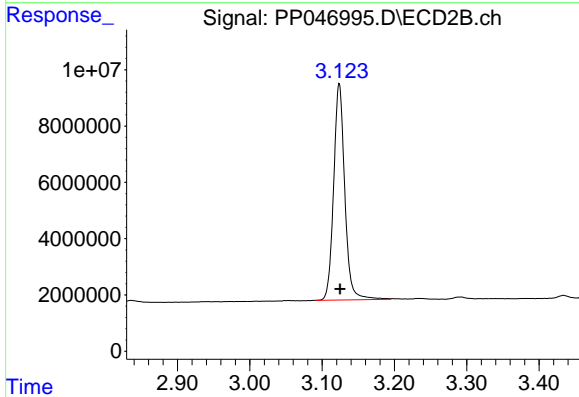




#1 Tetrachloro-m-xylene

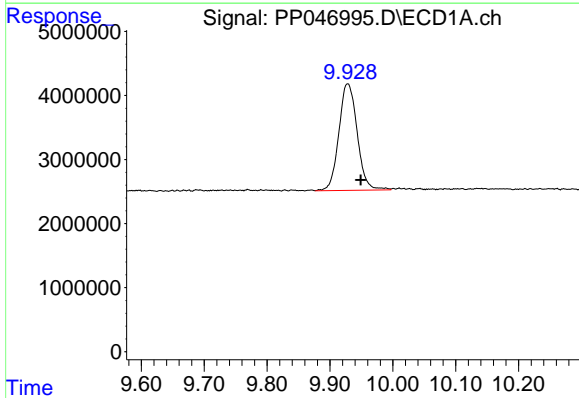
R.T.: 3.858 min  
Delta R.T.: -0.007 min  
Response: 56567612  
Conc: 23.43 ng/ml

Instrument :  
ECD\_P  
ClientSampleId :  
I.BLK



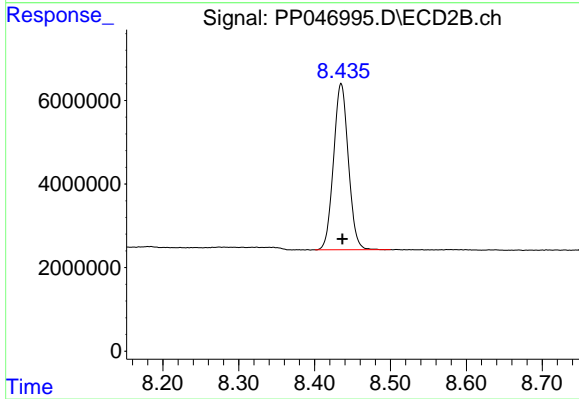
#1 Tetrachloro-m-xylene

R.T.: 3.124 min  
Delta R.T.: -0.001 min  
Response: 82308856  
Conc: 25.09 ng/ml



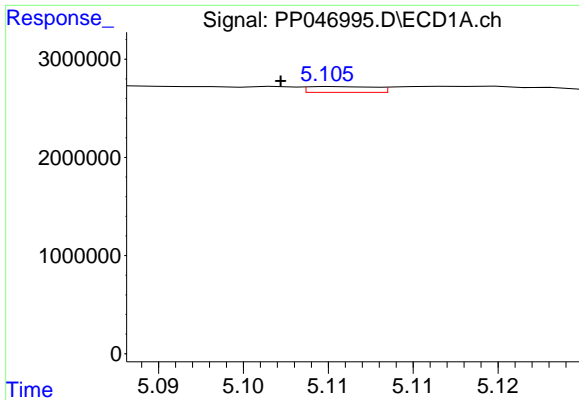
#2 Decachlorobiphenyl

R.T.: 9.929 min  
Delta R.T.: -0.020 min  
Response: 33733077  
Conc: 22.92 ng/ml



#2 Decachlorobiphenyl

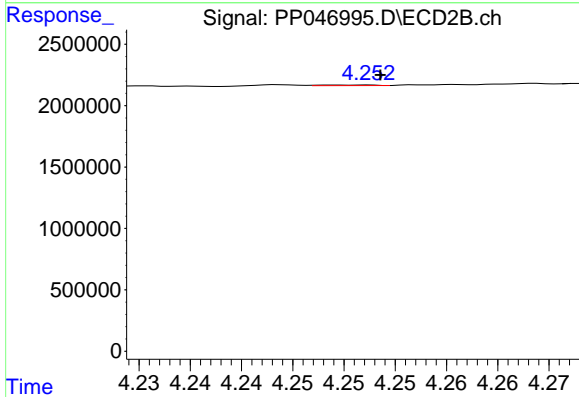
R.T.: 8.435 min  
Delta R.T.: -0.002 min  
Response: 53921009  
Conc: 22.61 ng/ml



#3 AR-1016-1

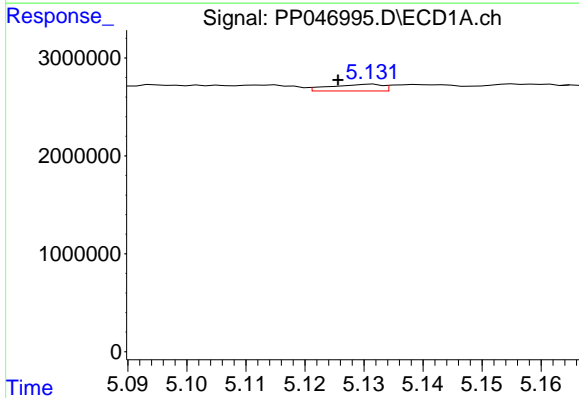
R.T.: 5.106 min  
 Delta R.T.: 0.003 min  
 Response: 162328  
 Conc: 2.16 ng/ml

Instrument :  
 ECD\_P  
 ClientSampleId :  
 I.BLK



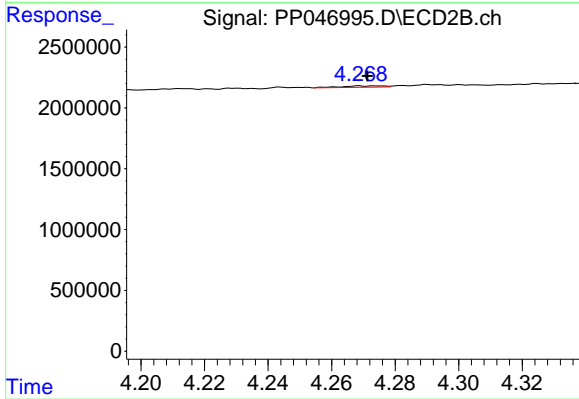
#3 AR-1016-1

R.T.: 4.252 min  
 Delta R.T.: -0.001 min  
 Response: 16726  
 Conc: 0.15 ng/ml



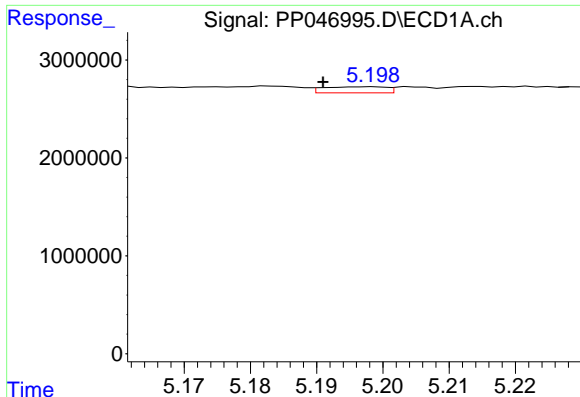
#4 AR-1016-2

R.T.: 5.132 min  
 Delta R.T.: 0.006 min  
 Response: 414840  
 Conc: 3.64 ng/ml



#4 AR-1016-2

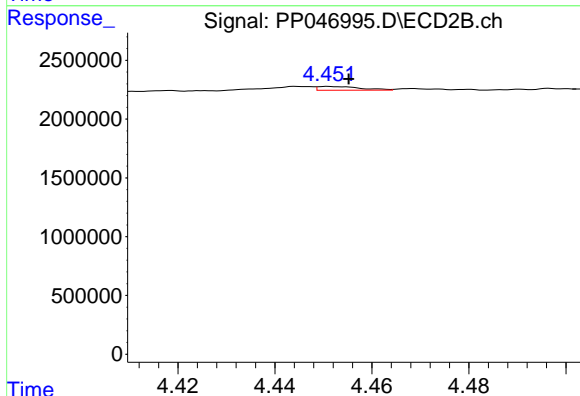
R.T.: 4.269 min  
 Delta R.T.: -0.003 min  
 Response: 100433  
 Conc: 0.59 ng/ml



#5 AR-1016-3

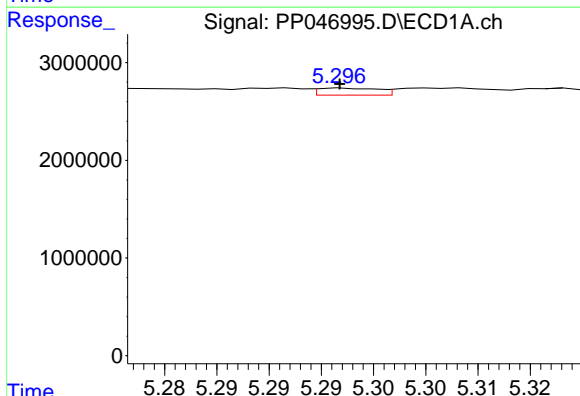
R.T.: 5.199 min  
 Delta R.T.: 0.008 min  
 Response: 408878  
 Conc: 5.72 ng/ml

Instrument :  
 ECD\_P  
 ClientSampleId :  
 I.BLK



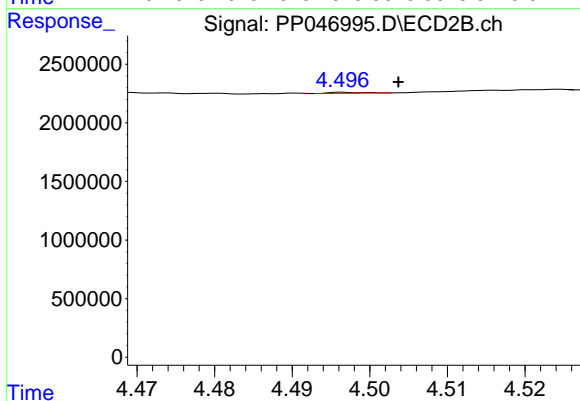
#5 AR-1016-3

R.T.: 4.451 min  
 Delta R.T.: -0.004 min  
 Response: 197338  
 Conc: 2.25 ng/ml



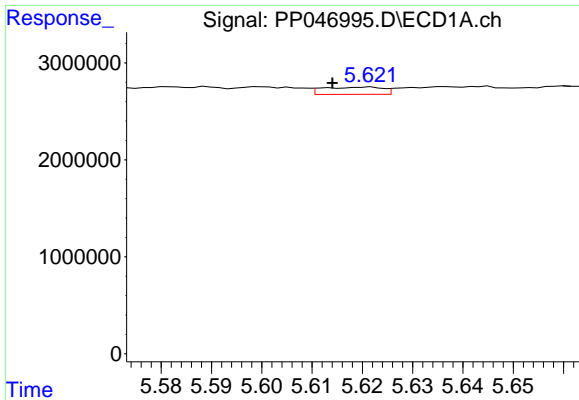
#6 AR-1016-4

R.T.: 5.297 min  
 Delta R.T.: 0.000 min  
 Response: 287508  
 Conc: 4.78 ng/ml



#6 AR-1016-4

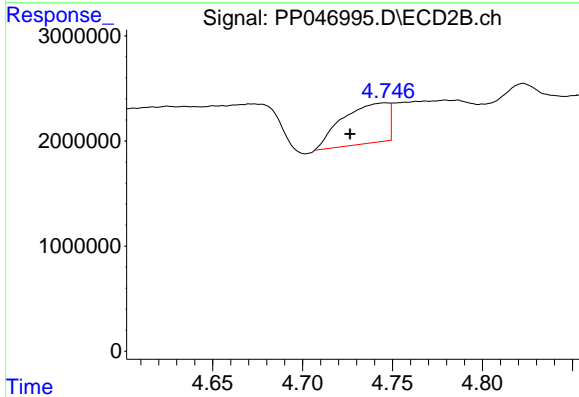
R.T.: 4.497 min  
 Delta R.T.: -0.007 min  
 Response: 26255  
 Conc: 0.38 ng/ml



#7 AR-1016-5

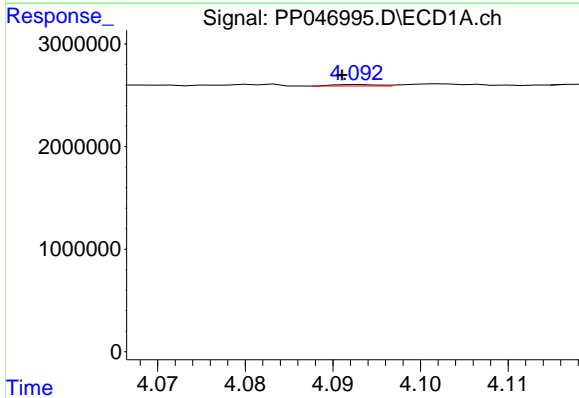
R.T.: 5.622 min  
 Delta R.T.: 0.008 min  
 Response: 618383  
 Conc: 11.68 ng/ml

Instrument :  
 ECD\_P  
 ClientSampleId :  
 I.BLK



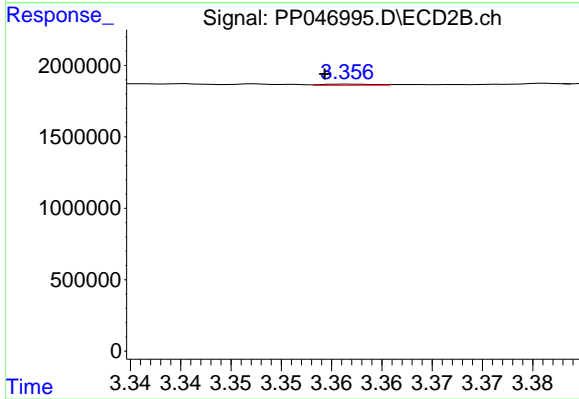
#7 AR-1016-5

R.T.: 4.746 min  
 Delta R.T.: 0.020 min  
 Response: 6758717  
 Conc: 79.47 ng/ml



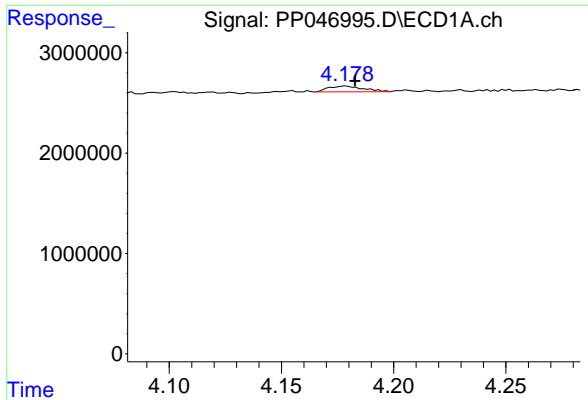
#8 AR-1221-1

R.T.: 4.093 min  
 Delta R.T.: 0.002 min  
 Response: 52314  
 Conc: 1.90 ng/ml



#8 AR-1221-1

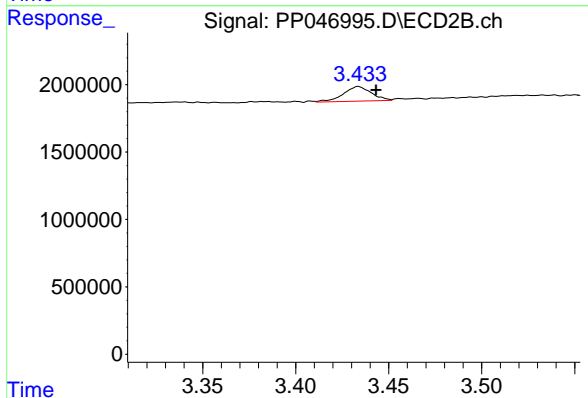
R.T.: 3.357 min  
 Delta R.T.: 0.002 min  
 Response: 29253  
 Conc: 0.66 ng/ml



#9 AR-1221-2

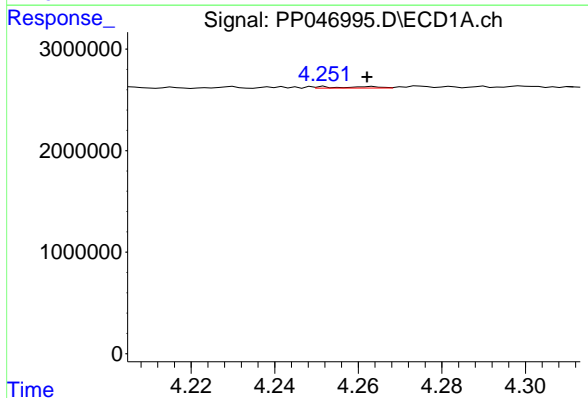
R.T.: 4.179 min  
 Delta R.T.: -0.004 min  
 Response: 629906  
 Conc: 31.03 ng/ml

Instrument :  
 ECD\_P  
 ClientSampleId :  
 I.BLK



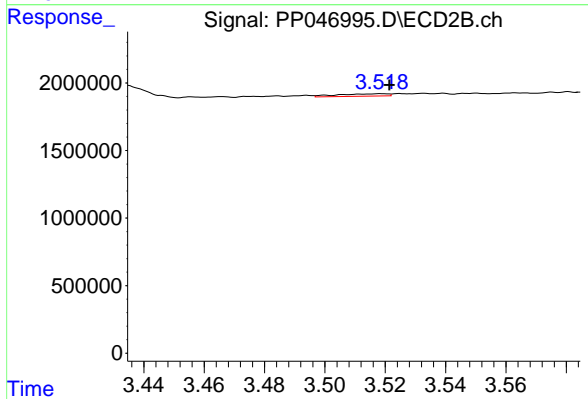
#9 AR-1221-2

R.T.: 3.434 min  
 Delta R.T.: -0.010 min  
 Response: 1144223  
 Conc: 33.88 ng/ml



#10 AR-1221-3

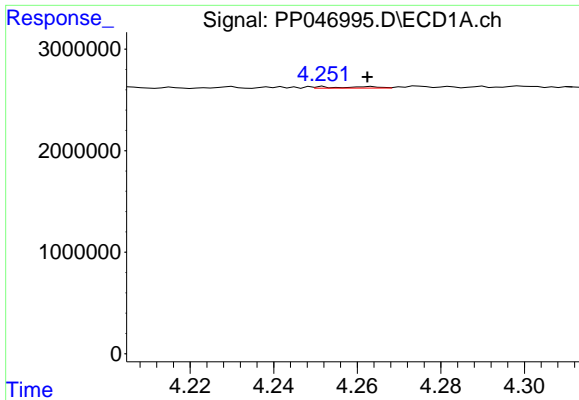
R.T.: 4.252 min  
 Delta R.T.: -0.010 min  
 Response: 106027  
 Conc: 1.63 ng/ml



#10 AR-1221-3

R.T.: 3.519 min  
 Delta R.T.: -0.002 min  
 Response: 206815  
 Conc: 2.08 ng/ml

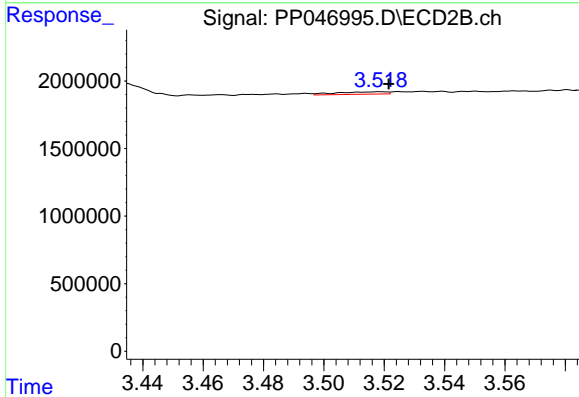




#11 AR-1232-1

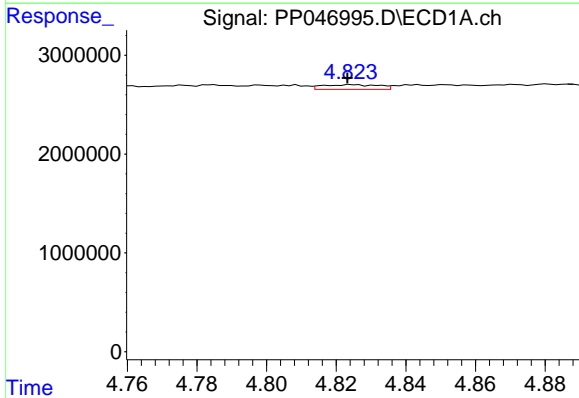
R.T.: 4.252 min  
 Delta R.T.: -0.010 min  
 Response: 106027  
 Conc: 2.17 ng/ml

Instrument :  
 ECD\_P  
 ClientSampleId :  
 I.BLK



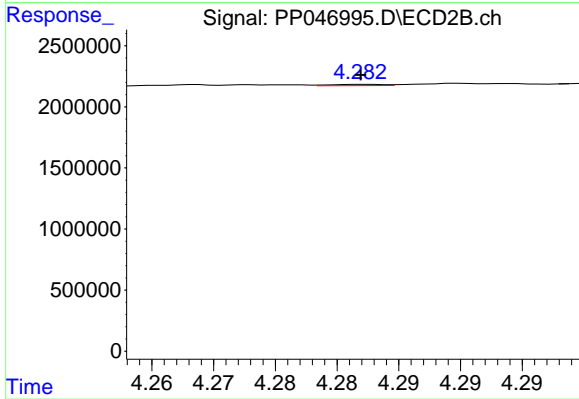
#11 AR-1232-1

R.T.: 3.519 min  
 Delta R.T.: -0.003 min  
 Response: 206815  
 Conc: 2.73 ng/ml



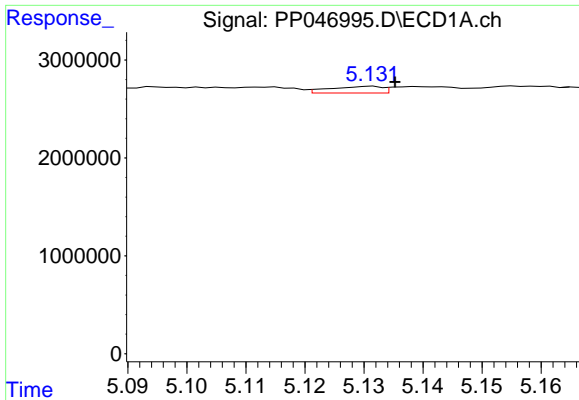
#12 AR-1232-2

R.T.: 4.824 min  
 Delta R.T.: 0.000 min  
 Response: 527914  
 Conc: 21.75 ng/ml



#12 AR-1232-2

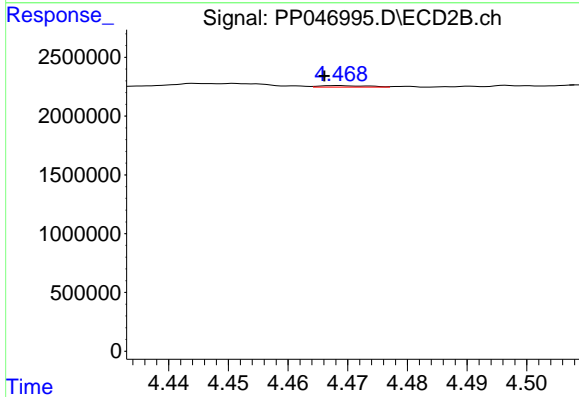
R.T.: 4.282 min  
 Delta R.T.: 0.000 min  
 Response: 29817  
 Conc: 0.41 ng/ml



#13 AR-1232-3

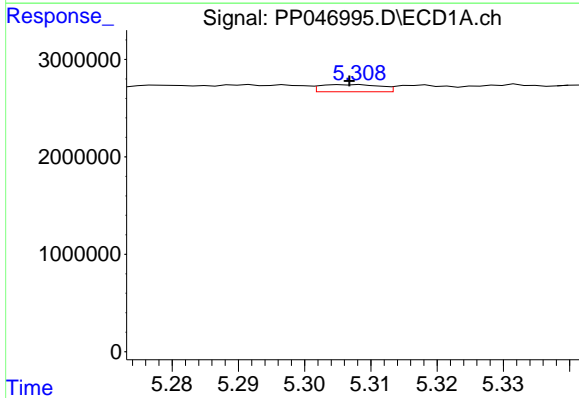
R.T.: 5.132 min  
 Delta R.T.: -0.004 min  
 Response: 414840  
 Conc: 8.78 ng/ml

Instrument :  
 ECD\_P  
 ClientSampleId :  
 I.BLK



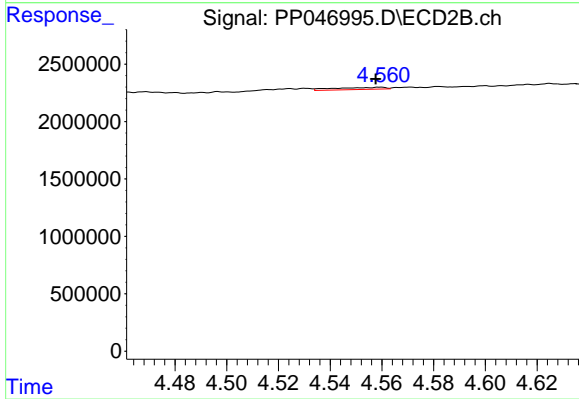
#13 AR-1232-3

R.T.: 4.469 min  
 Delta R.T.: 0.002 min  
 Response: 75211  
 Conc: 2.07 ng/ml



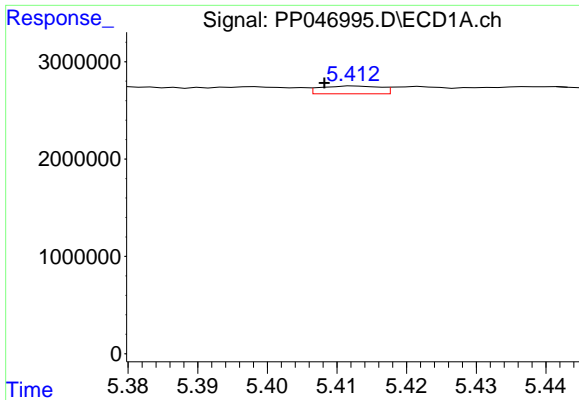
#14 AR-1232-4

R.T.: 5.305 min  
 Delta R.T.: -0.001 min  
 Response: 464998  
 Conc: 19.11 ng/ml



#14 AR-1232-4

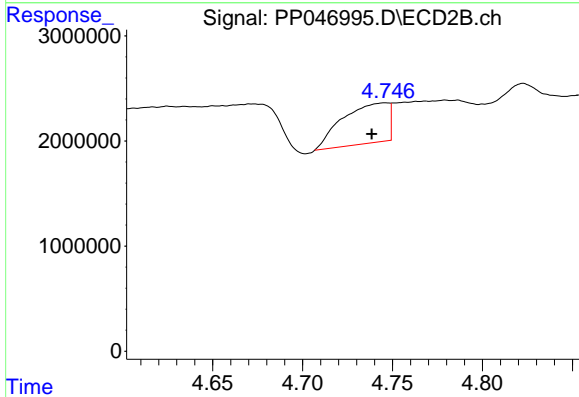
R.T.: 4.560 min  
 Delta R.T.: 0.002 min  
 Response: 243202  
 Conc: 7.63 ng/ml



#15 AR-1232-5

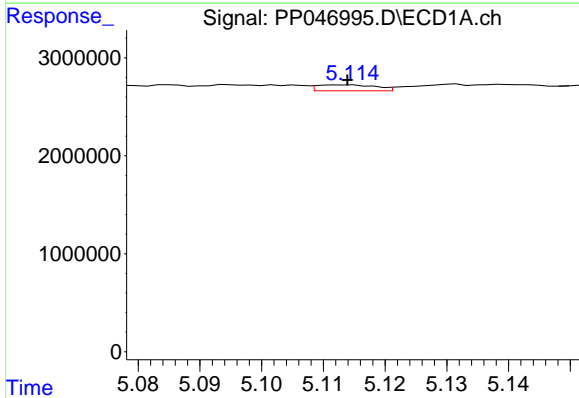
R.T.: 5.413 min  
 Delta R.T.: 0.004 min  
 Response: 482157  
 Conc: 28.98 ng/ml

Instrument :  
 ECD\_P  
 ClientSampleId :  
 I.BLK



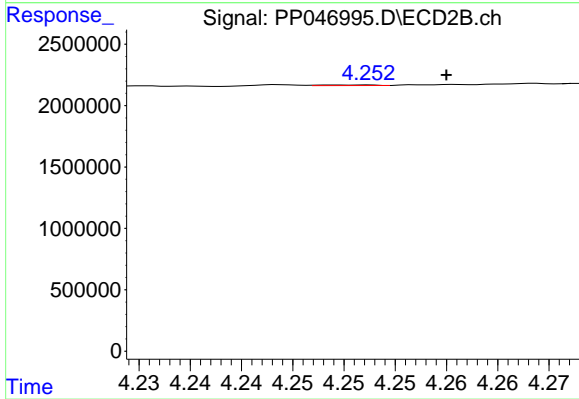
#15 AR-1232-5

R.T.: 4.746 min  
 Delta R.T.: 0.008 min  
 Response: 6758717  
 Conc: 234.63 ng/ml



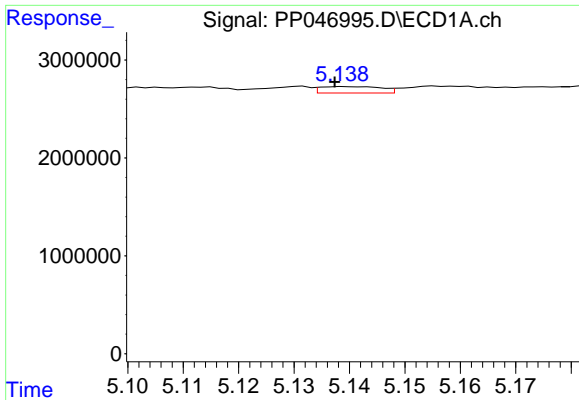
#16 AR-1242-1

R.T.: 5.114 min  
 Delta R.T.: 0.000 min  
 Response: 406052  
 Conc: 6.40 ng/ml



#16 AR-1242-1

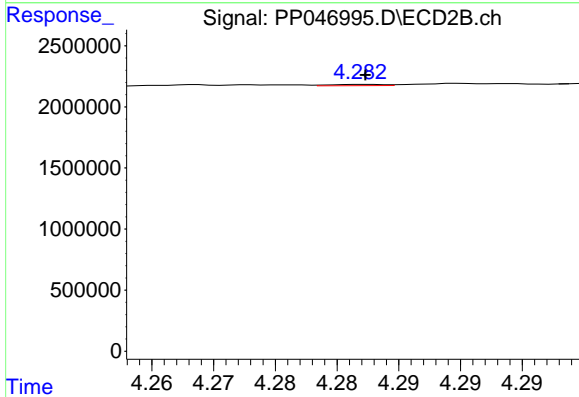
R.T.: 4.252 min  
 Delta R.T.: -0.008 min  
 Response: 16726  
 Conc: 0.17 ng/ml



#17 AR-1242-2

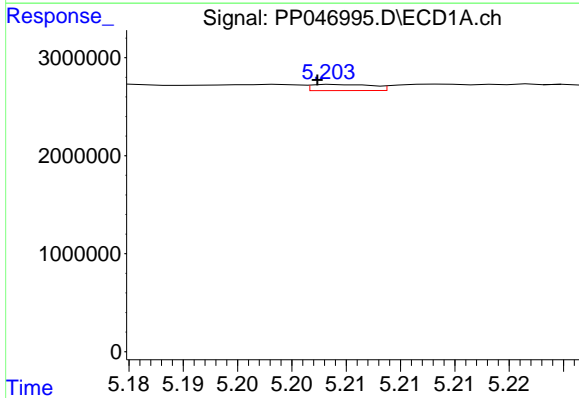
R.T.: 5.139 min  
 Delta R.T.: 0.002 min  
 Response: 498607  
 Conc: 5.23 ng/ml

Instrument :  
 ECD\_P  
 ClientSampleId :  
 I.BLK



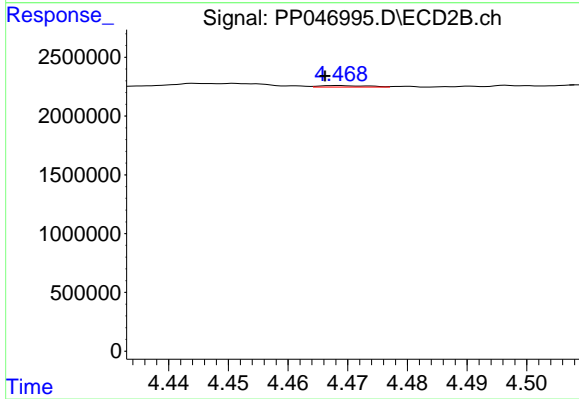
#17 AR-1242-2

R.T.: 4.282 min  
 Delta R.T.: 0.000 min  
 Response: 29817  
 Conc: 0.21 ng/ml



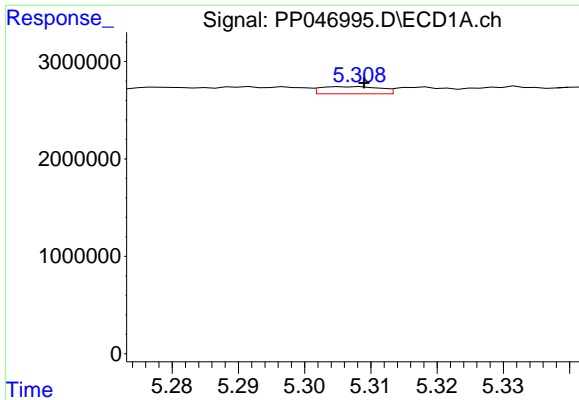
#18 AR-1242-3

R.T.: 5.204 min  
 Delta R.T.: 0.002 min  
 Response: 243897  
 Conc: 4.07 ng/ml



#18 AR-1242-3

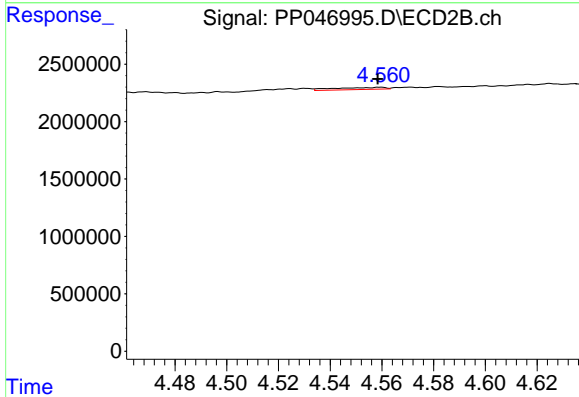
R.T.: 4.469 min  
 Delta R.T.: 0.002 min  
 Response: 75211  
 Conc: 1.01 ng/ml



#19 AR-1242-4

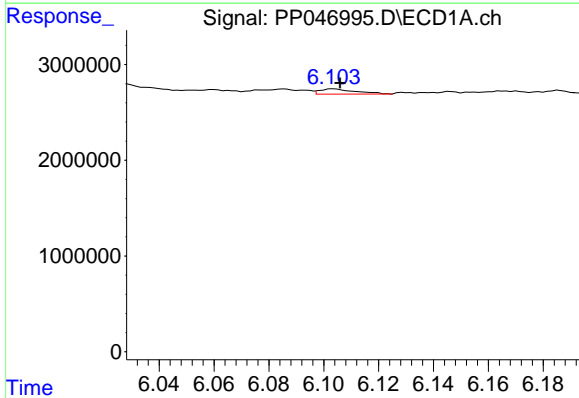
R.T.: 5.305 min  
 Delta R.T.: -0.004 min  
 Response: 464998  
 Conc: 9.19 ng/ml

Instrument :  
 ECD\_P  
 ClientSampleId :  
 I.BLK



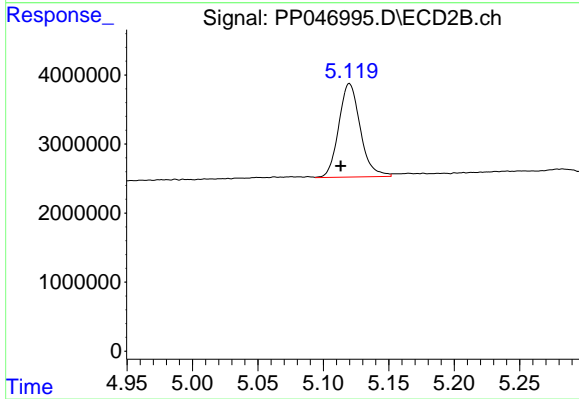
#19 AR-1242-4

R.T.: 4.560 min  
 Delta R.T.: 0.001 min  
 Response: 243202  
 Conc: 3.41 ng/ml



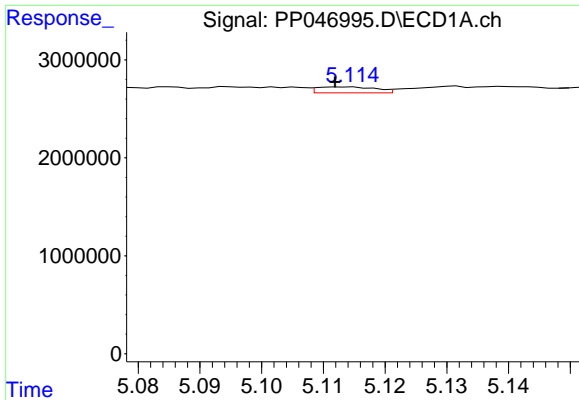
#20 AR-1242-5

R.T.: 6.103 min  
 Delta R.T.: -0.002 min  
 Response: 498151  
 Conc: 9.89 ng/ml



#20 AR-1242-5

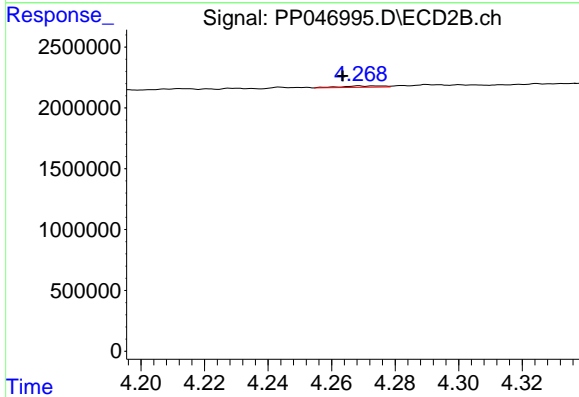
R.T.: 5.120 min  
 Delta R.T.: 0.007 min  
 Response: 15531329  
 Conc: 160.96 ng/ml



#21 AR-1248-1

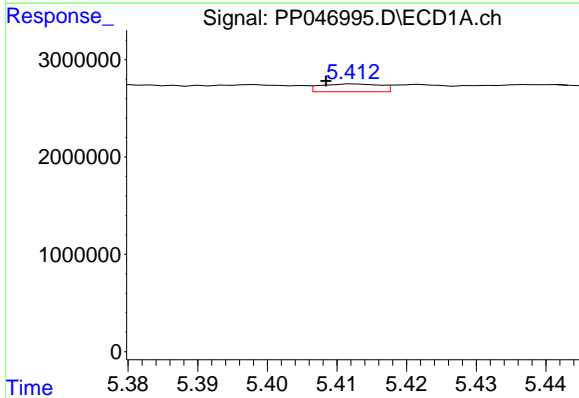
R.T.: 5.114 min  
 Delta R.T.: 0.002 min  
 Response: 406052  
 Conc: 9.72 ng/ml

Instrument :  
 ECD\_P  
 ClientSampleId :  
 I.BLK



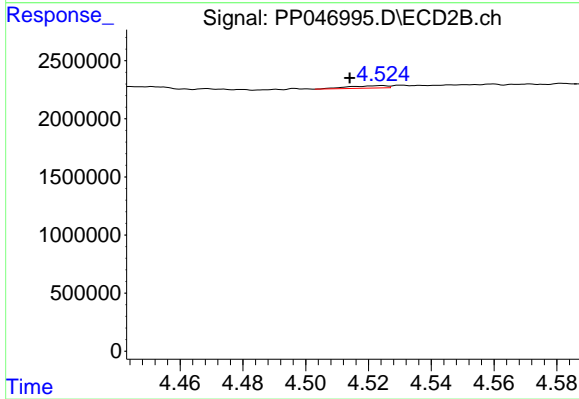
#21 AR-1248-1

R.T.: 4.269 min  
 Delta R.T.: 0.005 min  
 Response: 100433  
 Conc: 1.46 ng/ml



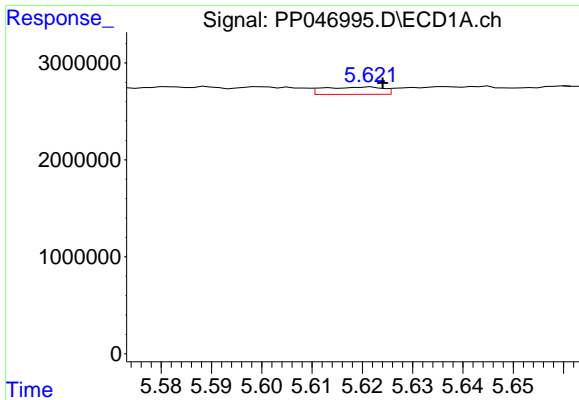
#22 AR-1248-2

R.T.: 5.413 min  
 Delta R.T.: 0.004 min  
 Response: 482157  
 Conc: 8.16 ng/ml



#22 AR-1248-2

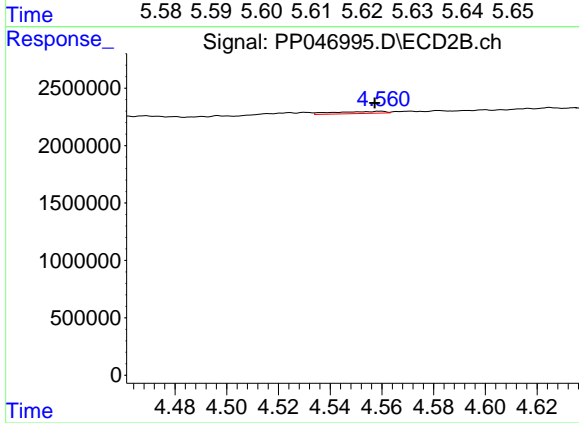
R.T.: 4.524 min  
 Delta R.T.: 0.010 min  
 Response: 179012  
 Conc: 1.91 ng/ml



#23 AR-1248-3

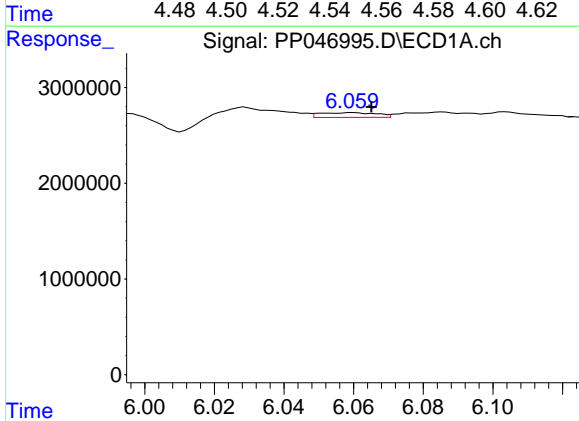
R.T.: 5.622 min  
 Delta R.T.: -0.002 min  
 Response: 618383  
 Conc: 8.85 ng/ml

Instrument :  
 ECD\_P  
 ClientSampleId :  
 I.BLK



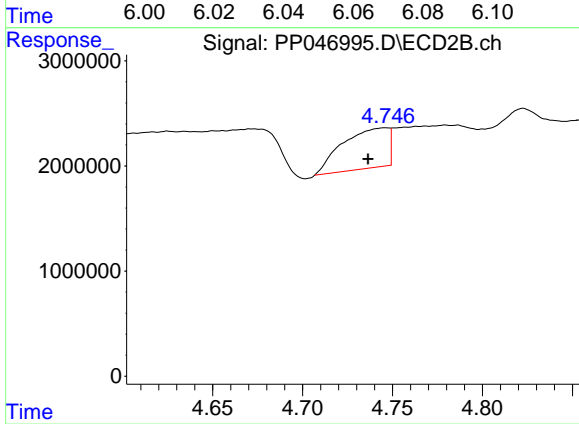
#23 AR-1248-3

R.T.: 4.560 min  
 Delta R.T.: 0.002 min  
 Response: 243202  
 Conc: 2.49 ng/ml



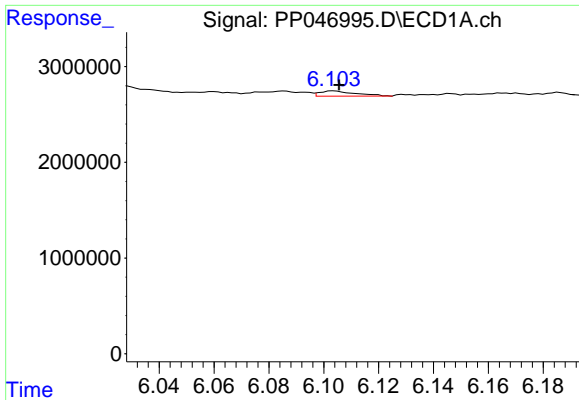
#24 AR-1248-4

R.T.: 6.060 min  
 Delta R.T.: -0.005 min  
 Response: 574539  
 Conc: 7.49 ng/ml



#24 AR-1248-4

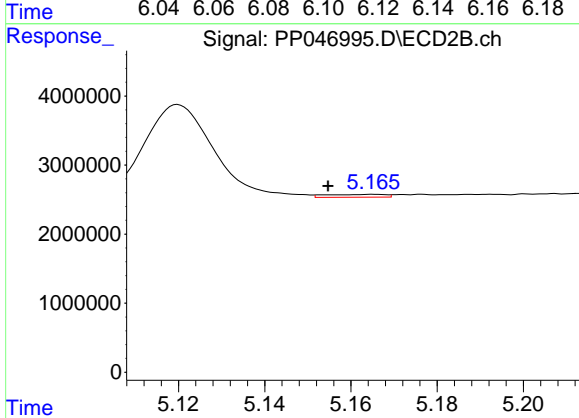
R.T.: 4.746 min  
 Delta R.T.: 0.010 min  
 Response: 6758717  
 Conc: 57.41 ng/ml



#25 AR-1248-5

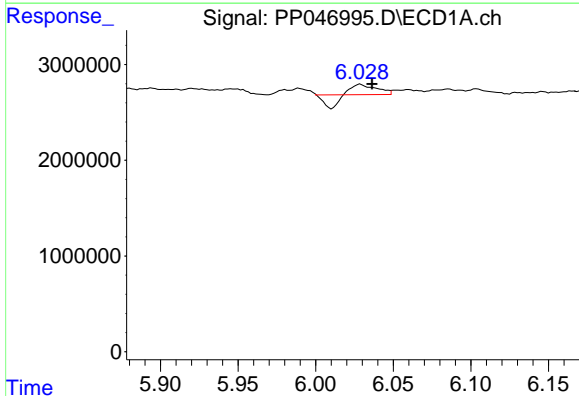
R.T.: 6.103 min  
 Delta R.T.: -0.002 min  
 Response: 498151  
 Conc: 6.40 ng/ml

Instrument :  
 ECD\_P  
 ClientSampleId :  
 I.BLK



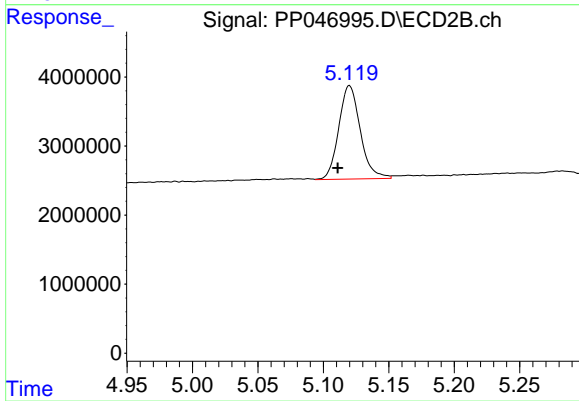
#25 AR-1248-5

R.T.: 5.165 min  
 Delta R.T.: 0.011 min  
 Response: 386232  
 Conc: 3.17 ng/ml



#26 AR-1254-1

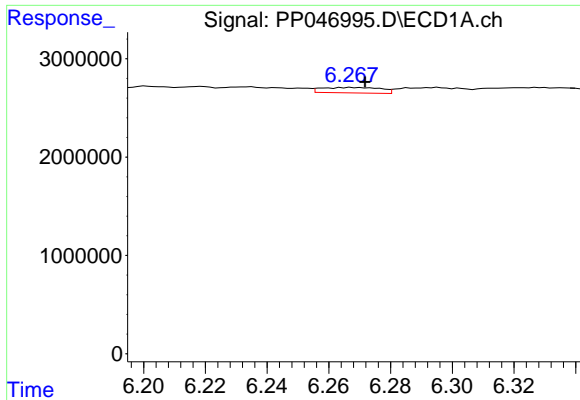
R.T.: 6.029 min  
 Delta R.T.: -0.008 min  
 Response: 519440  
 Conc: 8.94 ng/ml



#26 AR-1254-1

R.T.: 5.120 min  
 Delta R.T.: 0.009 min  
 Response: 15531329  
 Conc: 80.49 ng/ml

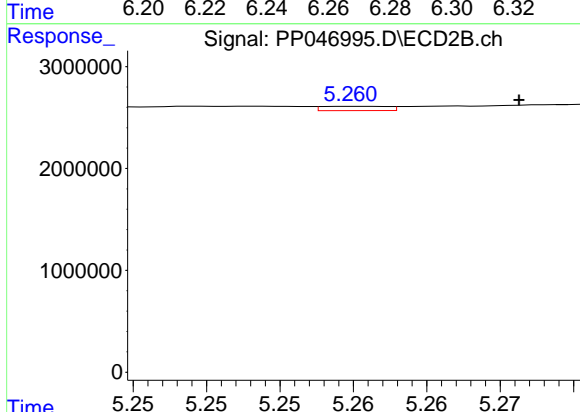




#27 AR-1254-2

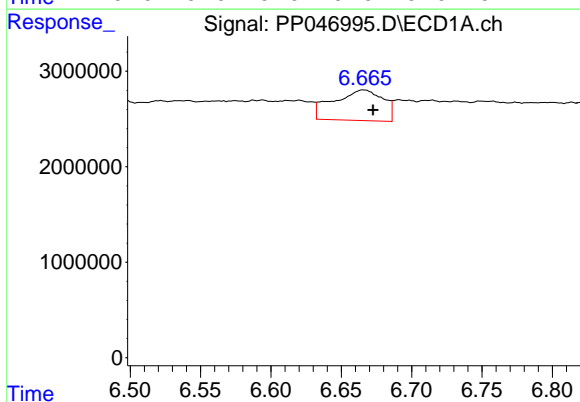
R.T.: 6.267 min  
 Delta R.T.: -0.005 min  
 Response: 736297  
 Conc: 5.97 ng/ml

Instrument :  
 ECD\_P  
 ClientSampleId :  
 I.BLK



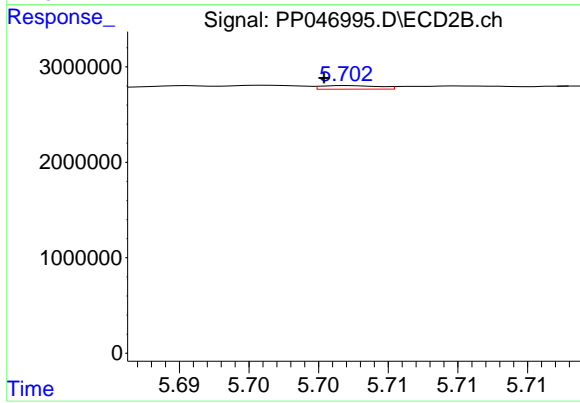
#27 AR-1254-2

R.T.: 5.260 min  
 Delta R.T.: -0.011 min  
 Response: 131967  
 Conc: 0.79 ng/ml



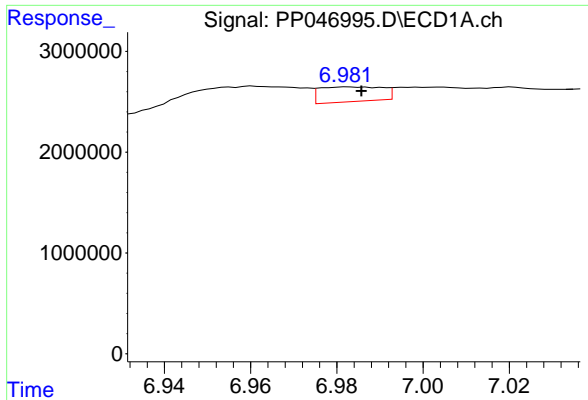
#28 AR-1254-3

R.T.: 6.666 min  
 Delta R.T.: -0.007 min  
 Response: 7854590  
 Conc: 59.36 ng/ml



#28 AR-1254-3

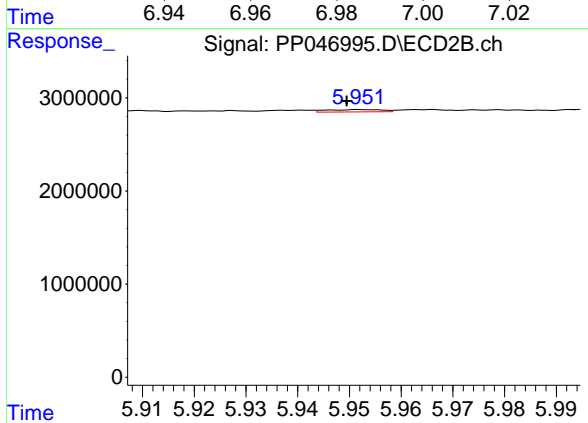
R.T.: 5.702 min  
 Delta R.T.: 0.002 min  
 Response: 109984  
 Conc: 0.44 ng/ml



#29 AR-1254-4

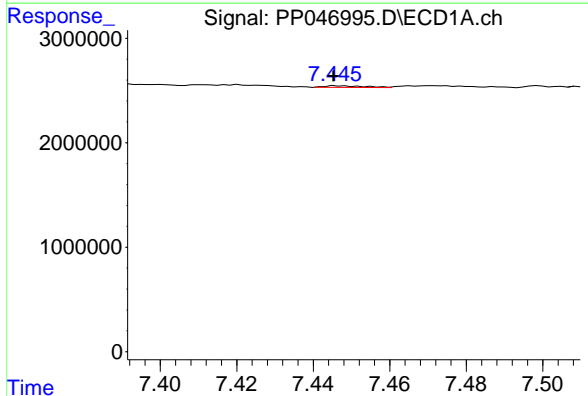
R.T.: 6.983 min  
 Delta R.T.: -0.003 min  
 Response: 1477073  
 Conc: 14.86 ng/ml

Instrument :  
 ECD\_P  
 ClientSampleId :  
 I.BLK



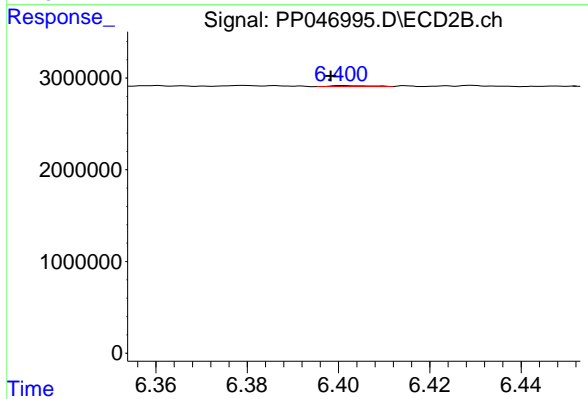
#29 AR-1254-4

R.T.: 5.952 min  
 Delta R.T.: 0.002 min  
 Response: 182335  
 Conc: 1.06 ng/ml



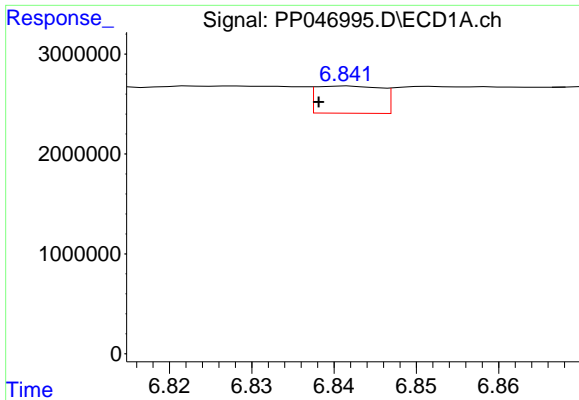
#30 AR-1254-5

R.T.: 7.446 min  
 Delta R.T.: 0.000 min  
 Response: 104229  
 Conc: 1.19 ng/ml



#30 AR-1254-5

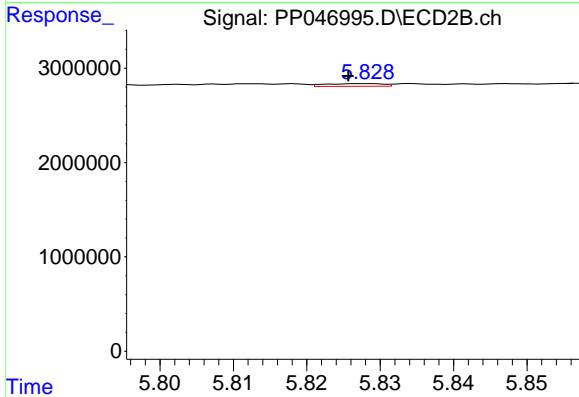
R.T.: 6.401 min  
 Delta R.T.: 0.003 min  
 Response: 59684  
 Conc: 0.27 ng/ml



#31 AR-1260-1

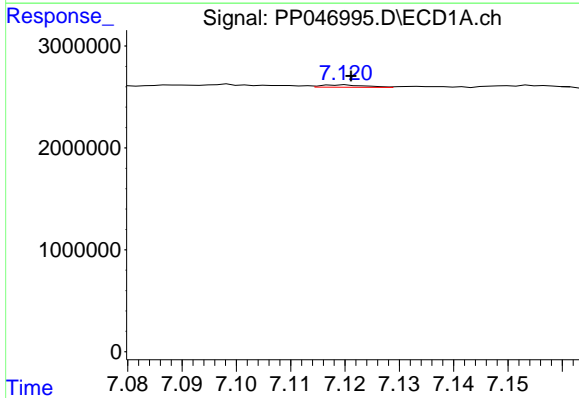
R.T.: 6.842 min  
 Delta R.T.: 0.004 min  
 Response: 1496085  
 Conc: 17.73 ng/ml

Instrument :  
 ECD\_P  
 ClientSampleId :  
 I.BLK



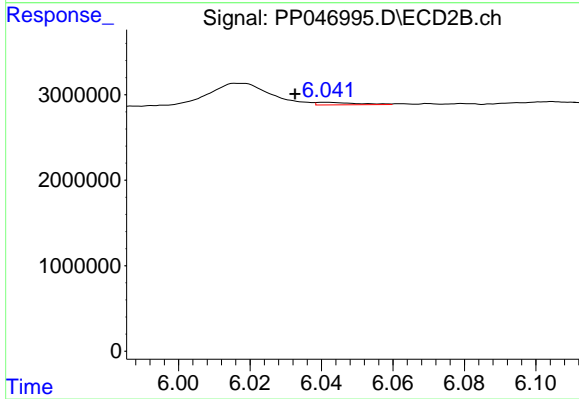
#31 AR-1260-1

R.T.: 5.828 min  
 Delta R.T.: 0.002 min  
 Response: 163434  
 Conc: 1.03 ng/ml



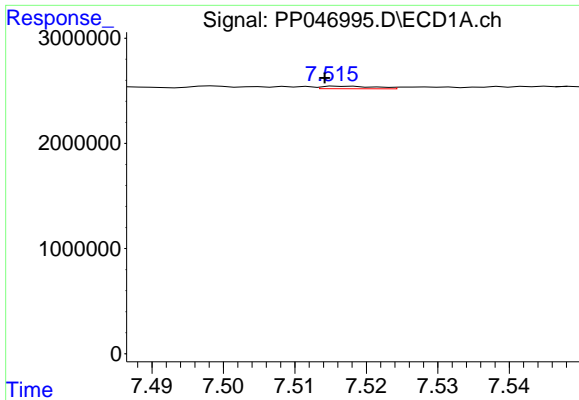
#32 AR-1260-2

R.T.: 7.120 min  
 Delta R.T.: 0.000 min  
 Response: 129935  
 Conc: 1.29 ng/ml



#32 AR-1260-2

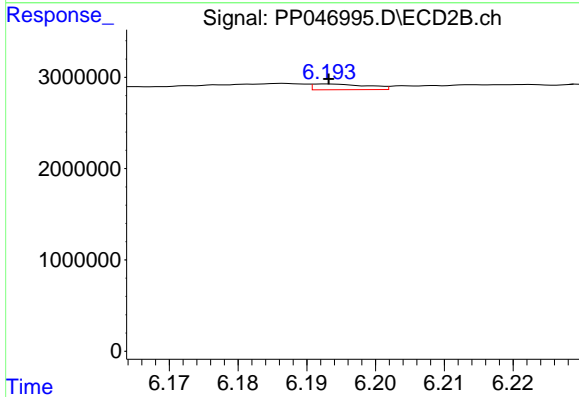
R.T.: 6.042 min  
 Delta R.T.: 0.009 min  
 Response: 226701  
 Conc: 1.11 ng/ml



#33 AR-1260-3

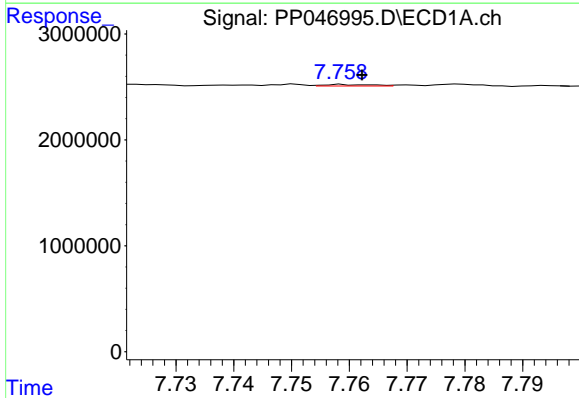
R.T.: 7.516 min  
 Delta R.T.: 0.002 min  
 Response: 122182  
 Conc: 1.51 ng/ml

Instrument :  
 ECD\_P  
 ClientSampleId :  
 I.BLK



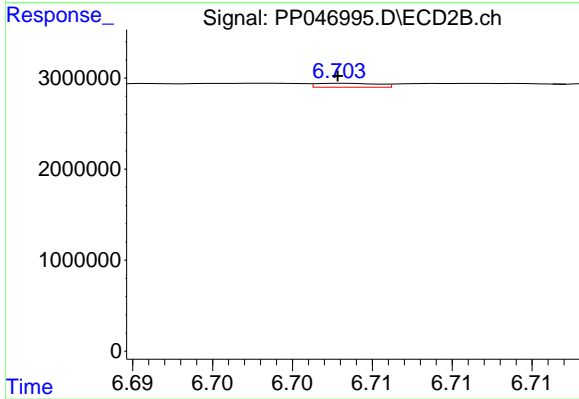
#33 AR-1260-3

R.T.: 6.193 min  
 Delta R.T.: 0.000 min  
 Response: 341518  
 Conc: 2.00 ng/ml



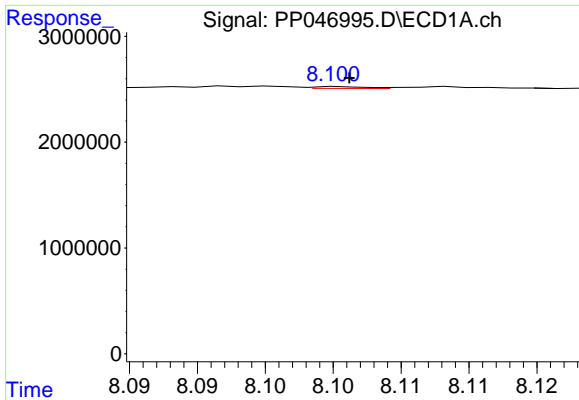
#34 AR-1260-4

R.T.: 7.759 min  
 Delta R.T.: -0.003 min  
 Response: 81790  
 Conc: 1.03 ng/ml



#34 AR-1260-4

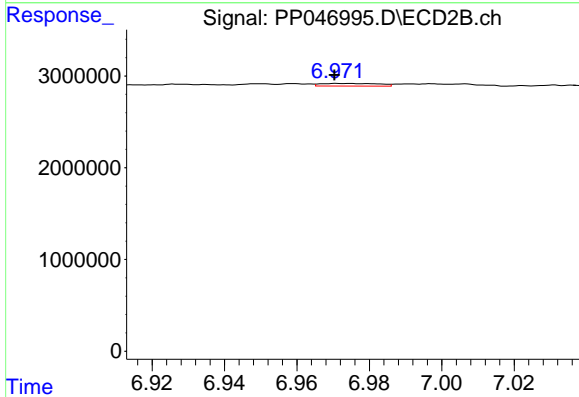
R.T.: 6.703 min  
 Delta R.T.: 0.000 min  
 Response: 115625  
 Conc: 0.80 ng/ml



#35 AR-1260-5

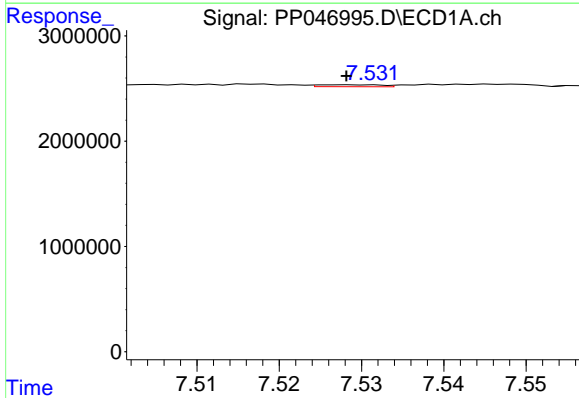
R.T.: 8.101 min  
 Delta R.T.: 0.000 min  
 Response: 45248  
 Conc: 0.28 ng/ml

Instrument :  
 ECD\_P  
 ClientSampleId :  
 I.BLK



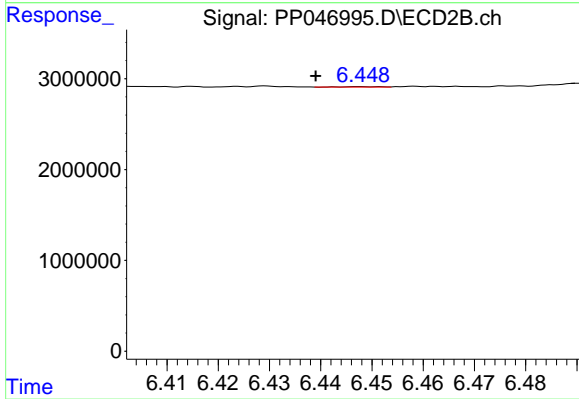
#35 AR-1260-5

R.T.: 6.971 min  
 Delta R.T.: 0.000 min  
 Response: 322604  
 Conc: 0.92 ng/ml



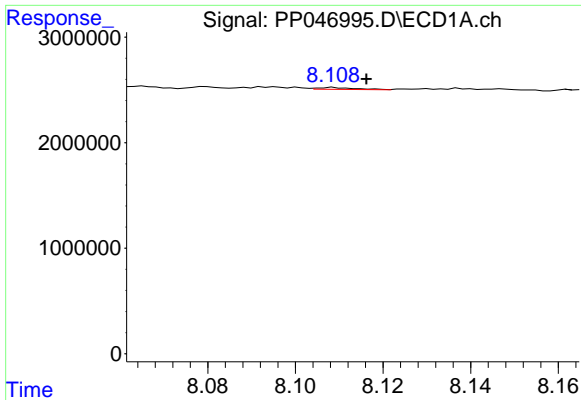
#36 AR-1262-1

R.T.: 7.528 min  
 Delta R.T.: 0.000 min  
 Response: 95533  
 Conc: 0.79 ng/ml



#36 AR-1262-1

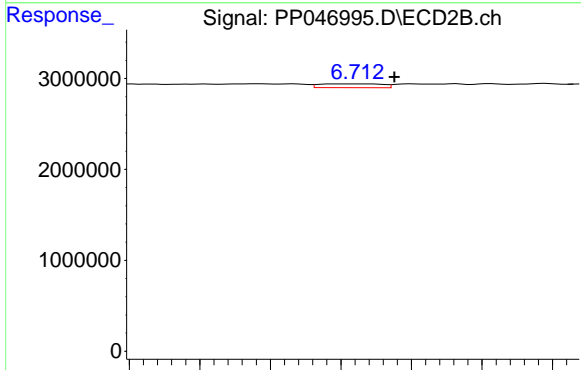
R.T.: 6.448 min  
 Delta R.T.: 0.009 min  
 Response: 18219  
 Conc: 0.07 ng/ml



#37 AR-1262-2

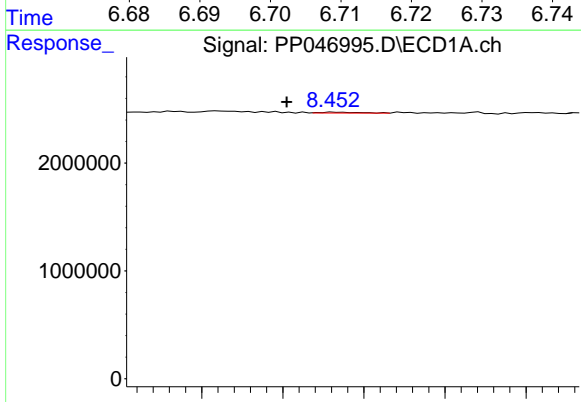
R.T.: 8.109 min  
 Delta R.T.: -0.007 min  
 Response: 110461  
 Conc: 0.57 ng/ml

Instrument :  
 ECD\_P  
 ClientSampleId :  
 I.BLK



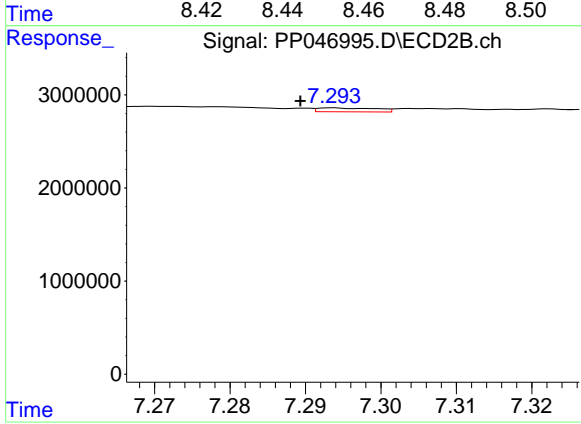
#37 AR-1262-2

R.T.: 6.712 min  
 Delta R.T.: -0.006 min  
 Response: 258071  
 Conc: 1.34 ng/ml



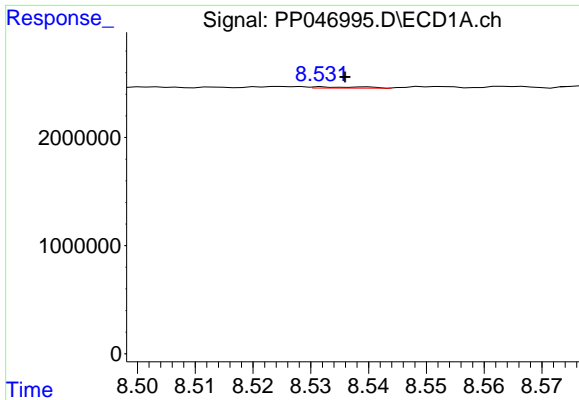
#38 AR-1262-3

R.T.: 8.453 min  
 Delta R.T.: 0.012 min  
 Response: 59527  
 Conc: 0.44 ng/ml



#38 AR-1262-3

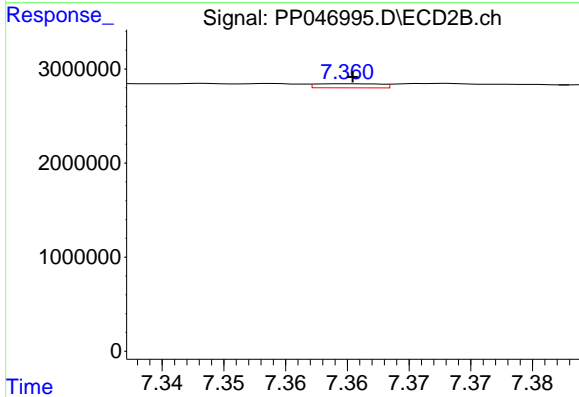
R.T.: 7.294 min  
 Delta R.T.: 0.004 min  
 Response: 227765  
 Conc: 1.40 ng/ml



#39 AR-1262-4

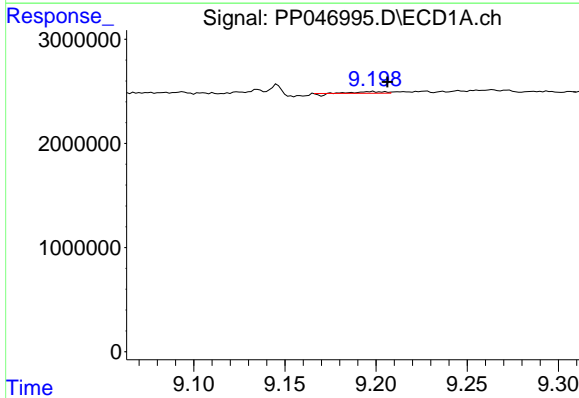
R.T.: 8.532 min  
 Delta R.T.: -0.004 min  
 Response: 74535  
 Conc: 1.18 ng/ml

Instrument :  
 ECD\_P  
 ClientSampleId :  
 I.BLK



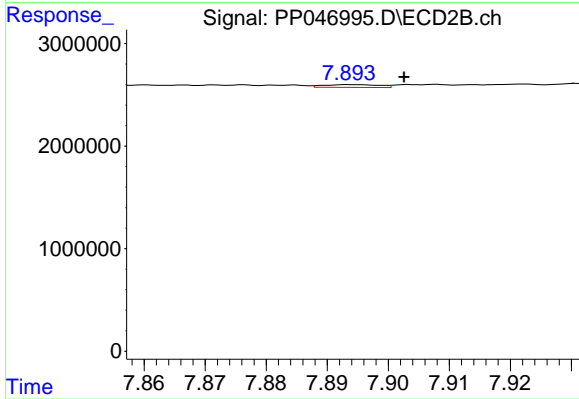
#39 AR-1262-4

R.T.: 7.360 min  
 Delta R.T.: 0.000 min  
 Response: 158253  
 Conc: 0.55 ng/ml



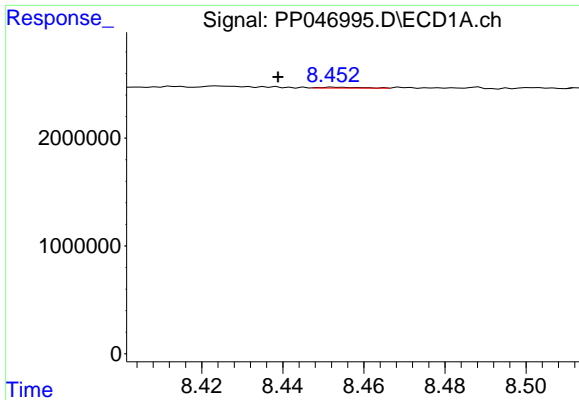
#40 AR-1262-5

R.T.: 9.198 min  
 Delta R.T.: -0.008 min  
 Response: 113541  
 Conc: 1.65 ng/ml



#40 AR-1262-5

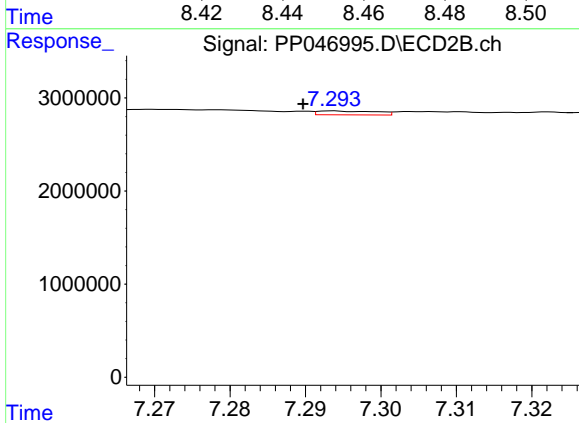
R.T.: 7.894 min  
 Delta R.T.: -0.008 min  
 Response: 176246  
 Conc: 1.34 ng/ml



#41 AR-1268-1

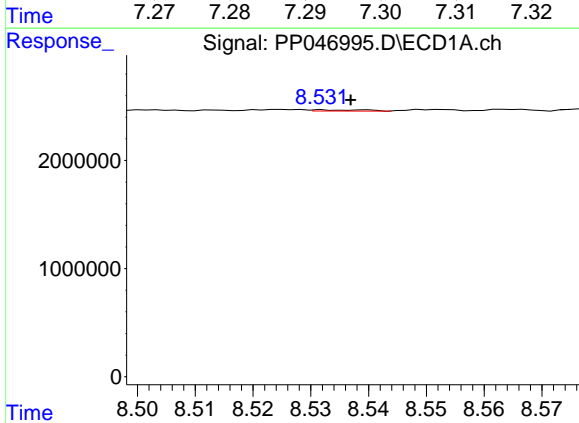
R.T.: 8.453 min  
 Delta R.T.: 0.014 min  
 Response: 59527  
 Conc: 0.25 ng/ml

Instrument :  
 ECD\_P  
 ClientSampleId :  
 I.BLK



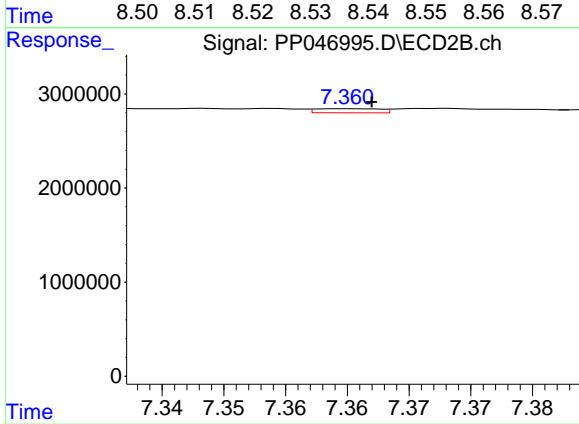
#41 AR-1268-1

R.T.: 7.294 min  
 Delta R.T.: 0.004 min  
 Response: 227765  
 Conc: 0.48 ng/ml



#42 AR-1268-2

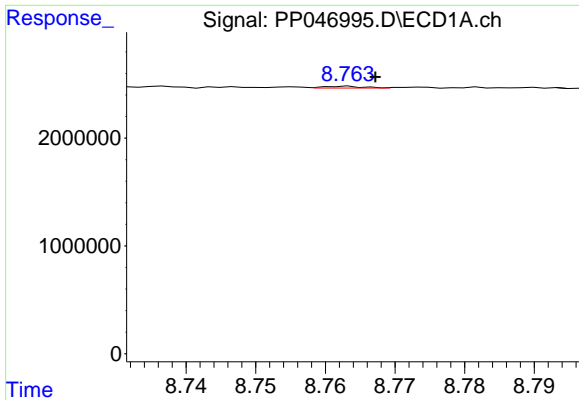
R.T.: 8.532 min  
 Delta R.T.: -0.005 min  
 Response: 74535  
 Conc: 0.34 ng/ml



#42 AR-1268-2

R.T.: 7.360 min  
 Delta R.T.: -0.002 min  
 Response: 158253  
 Conc: 0.37 ng/ml

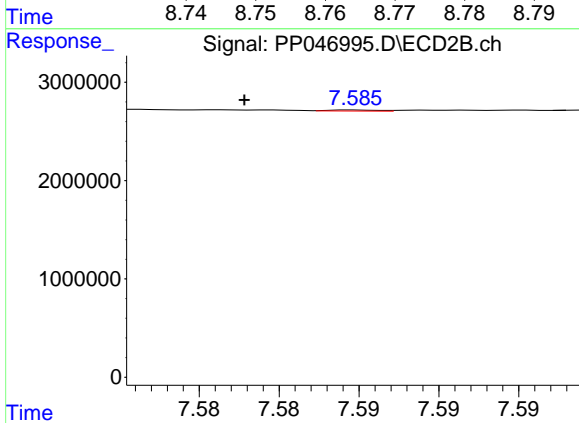




#43 AR-1268-3

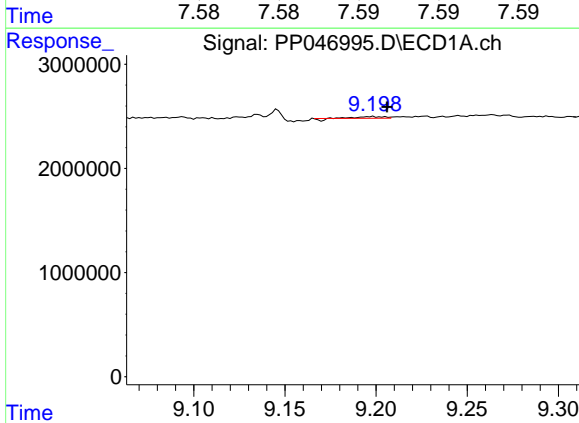
R.T.: 8.763 min  
 Delta R.T.: -0.004 min  
 Response: 64794  
 Conc: 0.34 ng/ml

Instrument :  
 ECD\_P  
 ClientSampleId :  
 I.BLK



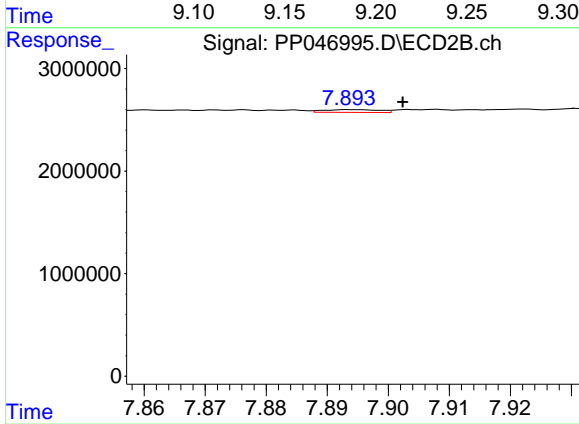
#43 AR-1268-3

R.T.: 7.585 min  
 Delta R.T.: 0.007 min  
 Response: 24751  
 Conc: 0.07 ng/ml



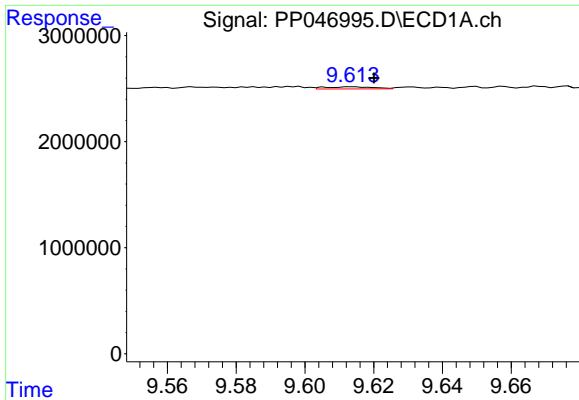
#44 AR-1268-4

R.T.: 9.198 min  
 Delta R.T.: -0.008 min  
 Response: 113541  
 Conc: 1.47 ng/ml



#44 AR-1268-4

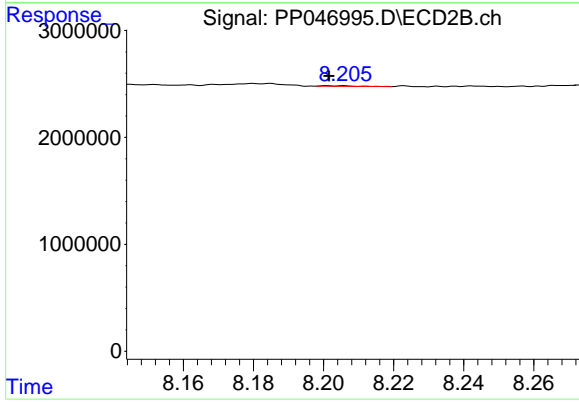
R.T.: 7.894 min  
 Delta R.T.: -0.008 min  
 Response: 176246  
 Conc: 1.20 ng/ml



#45 AR-1268-5

R.T.: 9.614 min  
 Delta R.T.: -0.006 min  
 Response: 191235  
 Conc: 0.34 ng/ml

Instrument :  
 ECD\_P  
 ClientSampleId :  
 I.BLK



#45 AR-1268-5

R.T.: 8.201 min  
 Delta R.T.: 0.000 min  
 Response: 33608  
 Conc: 0.03 ng/ml