

Data Path : Z:\pestpcbsrv\HPCHEM1\ECD\_P\Data\PP050422\  
 Data File : PP047000.D  
 Signal(s) : Signal #1: ECD1A.ch Signal #2: ECD2B.ch  
 Acq On : 04 May 2022 19:11  
 Operator : YP\AJ  
 Sample : N2651-03 10X  
 Misc :  
 ALS Vial : 21 Sample Multiplier: 1

Instrument :  
 ECD\_P  
 ClientSampleId :  
 CL-55-05-02-22-A

Integration File signal 1: autoint1.e  
 Integration File signal 2: autoint2.e  
 Quant Time: May 05 05:26:43 2022  
 Quant Method : Z:\pestpcbsrv\HPCHEM1\ECD\_P\methods\PP042222.M  
 Quant Title : GC EXTRACTABLES  
 QLast Update : Tue May 03 11:45:42 2022  
 Response via : Initial Calibration  
 Integrator: ChemStation

Volume Inj. : 2 µl  
 Signal #1 Phase : ZB-MR1 Signal #2 Phase: ZB-MR2  
 Signal #1 Info : 30Mx0.32mmx 0.50µ Signal #2 Info : 30M x 0.32mm x 0.25µm

Compound	RT#1	RT#2	Resp#1	Resp#2	ng/ml	ng/ml
-----						
System Monitoring Compounds						
1) SA Tetrachlo...	3.857	3.123	4055609	6707144	1.680	2.045
2) SA Decachlor...	9.965f	8.434	177263	5398382	0.120	2.263 #
Target Compounds						
3) L1 AR-1016-1	5.100	4.256	225629	36664	2.996	0.319 #
4) L1 AR-1016-2	5.132	4.270	143776	75557	1.263	0.445 #
5) L1 AR-1016-3	5.199	4.459	240980	42176	3.371	0.482 #
6) L1 AR-1016-4	5.298	4.500	188553	41484	3.136	0.596 #
7) L1 AR-1016-5	5.619	4.723	130700	98493	2.468	1.158 #
8) L2 AR-1221-1	4.088	3.355	131010	26591	4.750	0.602 #
9) L2 AR-1221-2	4.187	3.445	59227	25812	2.917	0.764 #
10) L2 AR-1221-3	4.260	3.523	171022	139132	2.624	1.401 #
11) L3 AR-1232-1	4.260	3.523	171022	139132	3.493	1.834 #
12) L3 AR-1232-2	4.822	4.280	80897	31468	3.333	0.436 #
13) L3 AR-1232-3	5.132	4.471	143776	17395	3.044	0.478 #
14) L3 AR-1232-4	5.308	4.563	81341	115679	3.343	3.631
15) L3 AR-1232-5	5.409	4.734	171019	112711	10.279	3.913 #
16) L4 AR-1242-1	5.118	4.256	210474	36664	3.320	0.372 #
17) L4 AR-1242-2	5.132	4.280	143776	31468	1.509	0.217 #
18) L4 AR-1242-3	5.199	4.471	240980	17395	4.025	0.234 #
19) L4 AR-1242-4	5.308	4.563	81341	115679	1.608	1.620
20) L4 AR-1242-5	6.108	5.106	142709	19756	2.832	0.205 #
21) L5 AR-1248-1	5.118	4.270	210474	75557	5.036	1.100 #
22) L5 AR-1248-2	5.409	4.521	171019	163014	2.894	1.744 #
23) L5 AR-1248-3	5.619	4.563	130700	115679	1.871	1.185 #
24) L5 AR-1248-4	6.067	4.734	70559	112711	0.920	0.957
25) L5 AR-1248-5	6.108	5.153	142709	67255	1.835	0.552 #
26) L6 AR-1254-1	6.039	5.106	65797	19756	1.133	0.102 #
27) L6 AR-1254-2	6.257f	5.274	147202	82997	1.194	0.498 #
28) L6 AR-1254-3	6.671	5.700	103156	178612	0.780	0.716
29) L6 AR-1254-4	6.979	5.949	72191	107816	0.726	0.628
30) L6 AR-1254-5	7.453	6.400	273311	35455	3.107	0.162 #
31) L7 AR-1260-1	6.840	5.824	31529	68368	0.374	0.430
32) L7 AR-1260-2	7.114	6.032	128226	74589	1.273	0.367 #
33) L7 AR-1260-3	7.512	6.192	242703	133359	2.996	0.781 #
34) L7 AR-1260-4	7.769	6.709	116170	116470	1.458	0.801 #
35) L7 AR-1260-5	8.101	6.971	51248	80708	0.323	0.230 #
36) L8 AR-1262-1	7.543	6.445	208555	7226	1.725	0.029 #
37) L8 AR-1262-2	8.118	6.720	59266	82886	0.308	0.429 #
38) L8 AR-1262-3	8.446	7.291	149538	32080	1.114	0.198 #
39) L8 AR-1262-4	8.540	7.364	58533	300646	0.929	1.050
40) L8 AR-1262-5	9.213	7.893	40618	155374	0.589	1.184 #
41) L9 AR-1268-1	8.446	7.291	149538	32080	0.622	0.067 #

Data Path : Z:\pestpcbsrv\HPCHEM1\ECD\_P\Data\PP050422\  
 Data File : PP047000.D  
 Signal(s) : Signal #1: ECD1A.ch Signal #2: ECD2B.ch  
 Acq On : 04 May 2022 19:11  
 Operator : YP\AJ  
 Sample : N2651-03 10X  
 Misc :  
 ALS Vial : 21 Sample Multiplier: 1

Instrument :  
 ECD\_P  
 ClientSampleId :  
 CL-55-05-02-22-A

Integration File signal 1: autoint1.e  
 Integration File signal 2: autoint2.e  
 Quant Time: May 05 05:26:43 2022  
 Quant Method : Z:\pestpcbsrv\HPCHEM1\ECD\_P\methods\PP042222.M  
 Quant Title : GC EXTRACTABLES  
 QLast Update : Tue May 03 11:45:42 2022  
 Response via : Initial Calibration  
 Integrator: ChemStation

Volume Inj. : 2 µl  
 Signal #1 Phase : ZB-MR1 Signal #2 Phase: ZB-MR2  
 Signal #1 Info : 30Mx0.32mmx 0.50µ Signal #2 Info : 30M x 0.32mm x 0.25µm

	Compound	RT#1	RT#2	Resp#1	Resp#2	ng/ml	ng/ml
42)	L9 AR-1268-2	8.540	7.364	58533	300646	0.264	0.710 #
43)	L9 AR-1268-3	8.771	7.571	42896	294464	0.223	0.833 #
44)	L9 AR-1268-4	9.213	7.893	40618	155374	0.526	1.057 #
45)	L9 AR-1268-5	9.613	8.196	201955	124840	0.361	0.122 #

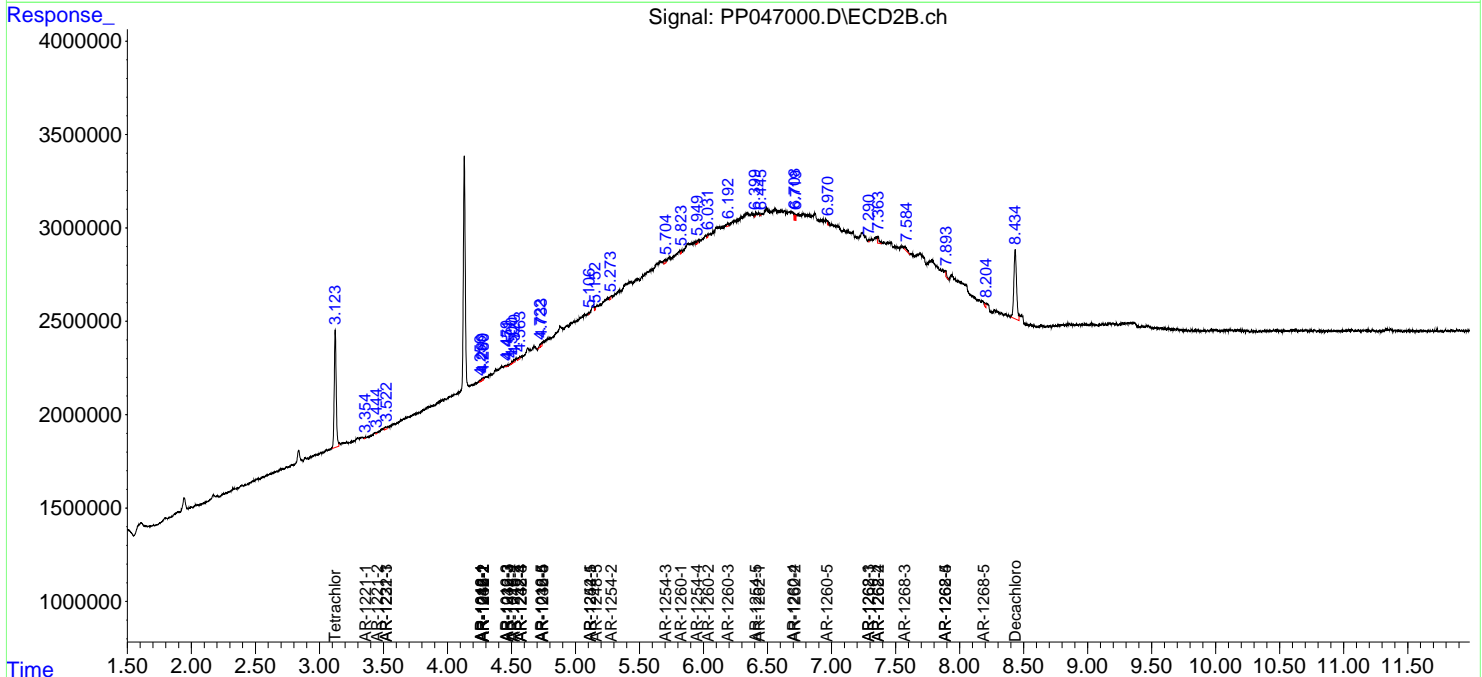
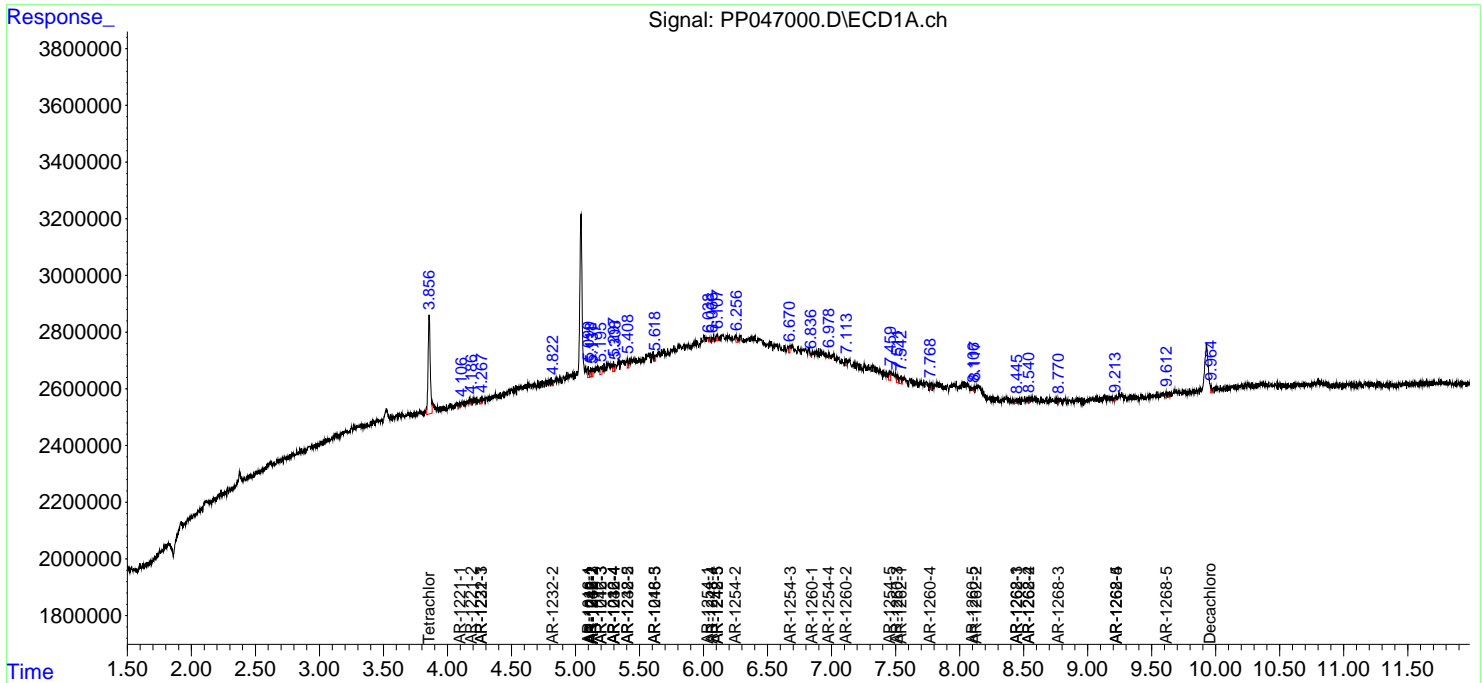
(f)=RT Delta > 1/2 Window (#)=Amounts differ by > 25% (m)=manual int.

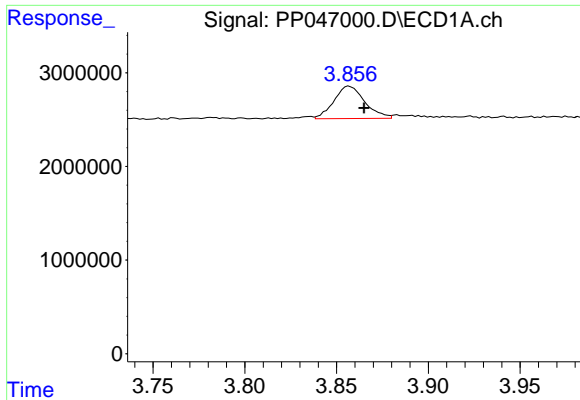
Data Path : Z:\pestpcbsrv\HPCHEM1\ECD\_P\Data\PP050422\  
 Data File : PP047000.D  
 Signal(s) : Signal #1: ECD1A.ch Signal #2: ECD2B.ch  
 Acq On : 04 May 2022 19:11  
 Operator : YP\AJ  
 Sample : N2651-03 10X  
 Misc :  
 ALS Vial : 21 Sample Multiplier: 1

Instrument :  
 ECD\_P  
 ClientSampleId :  
 CL-55-05-02-22-A

Integration File signal 1: autoint1.e  
 Integration File signal 2: autoint2.e  
 Quant Time: May 05 05:26:43 2022  
 Quant Method : Z:\pestpcbsrv\HPCHEM1\ECD\_P\methods\PP042222.M  
 Quant Title : GC EXTRACTABLES  
 QLast Update : Tue May 03 11:45:42 2022  
 Response via : Initial Calibration  
 Integrator: ChemStation

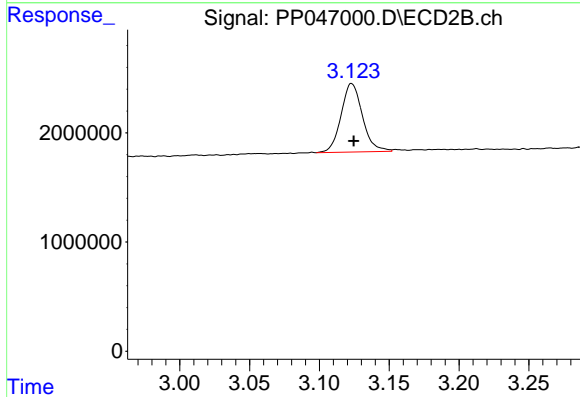
Volume Inj. : 2 µl  
 Signal #1 Phase : ZB-MR1 Signal #2 Phase: ZB-MR2  
 Signal #1 Info : 30Mx0.32mmx 0.50µ Signal #2 Info : 30M x 0.32mm x 0.25µm



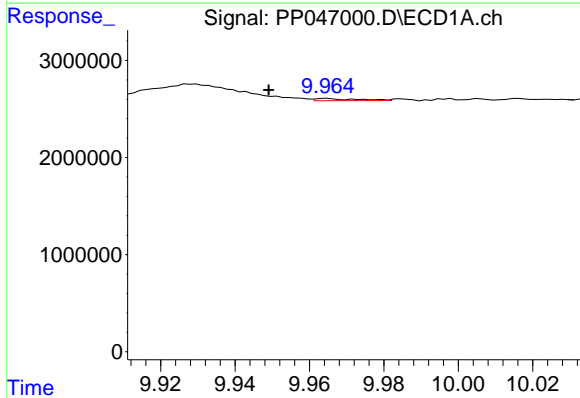


#1 Tetrachloro-m-xylene  
 R.T.: 3.857 min  
 Delta R.T.: -0.008 min  
 Response: 4055609  
 Conc: 1.68 ng/ml

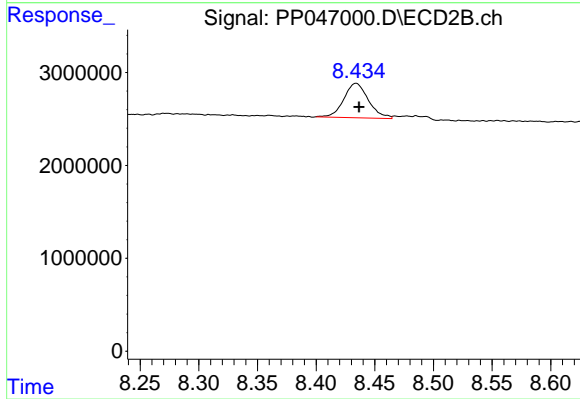
Instrument :  
 ECD\_P  
 ClientSampleId :  
 CL-55-05-02-22-A



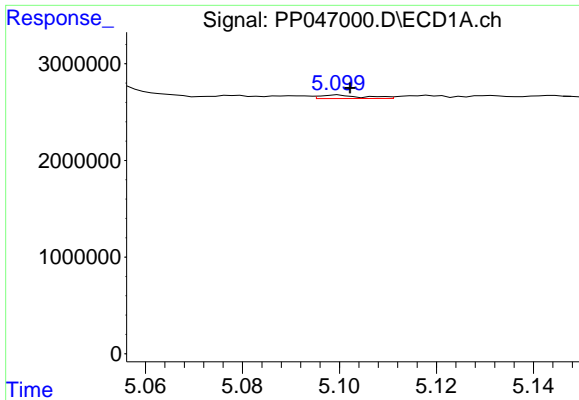
#1 Tetrachloro-m-xylene  
 R.T.: 3.123 min  
 Delta R.T.: -0.002 min  
 Response: 6707144  
 Conc: 2.04 ng/ml



#2 Decachlorobiphenyl  
 R.T.: 9.965 min  
 Delta R.T.: 0.016 min  
 Response: 177263  
 Conc: 0.12 ng/ml



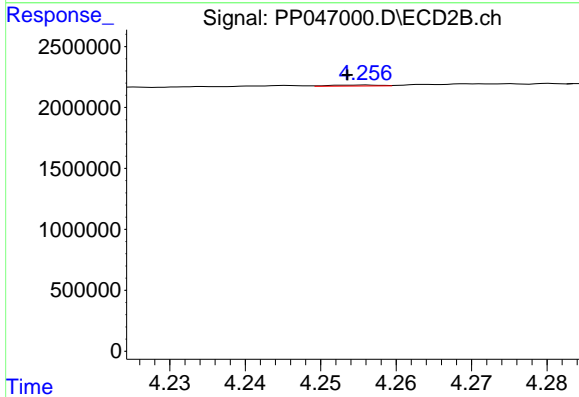
#2 Decachlorobiphenyl  
 R.T.: 8.434 min  
 Delta R.T.: -0.002 min  
 Response: 5398382  
 Conc: 2.26 ng/ml



#3 AR-1016-1

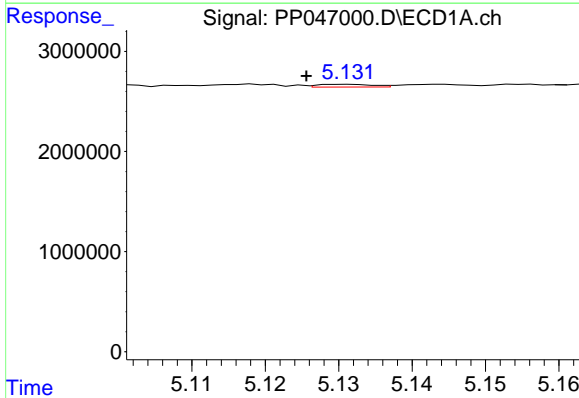
R.T.: 5.100 min  
 Delta R.T.: -0.002 min  
 Response: 225629  
 Conc: 3.00 ng/ml

Instrument :  
 ECD\_P  
 ClientSampleId :  
 CL-55-05-02-22-A



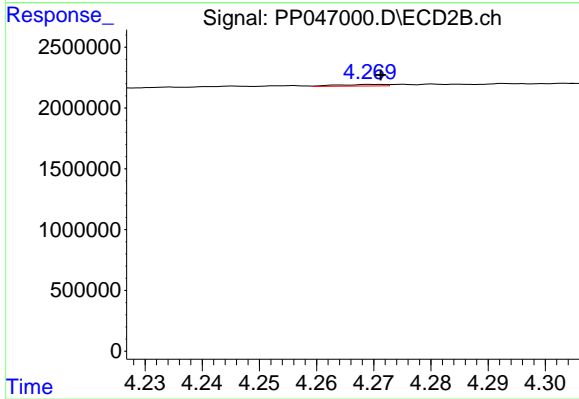
#3 AR-1016-1

R.T.: 4.256 min  
 Delta R.T.: 0.002 min  
 Response: 36664  
 Conc: 0.32 ng/ml



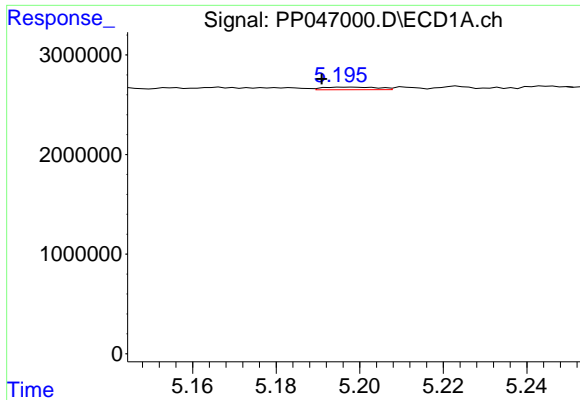
#4 AR-1016-2

R.T.: 5.132 min  
 Delta R.T.: 0.006 min  
 Response: 143776  
 Conc: 1.26 ng/ml



#4 AR-1016-2

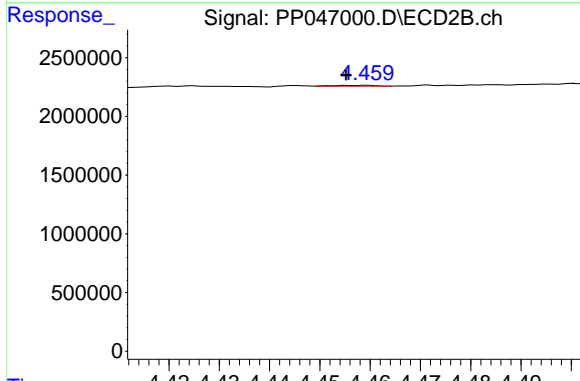
R.T.: 4.270 min  
 Delta R.T.: -0.002 min  
 Response: 75557  
 Conc: 0.45 ng/ml



#5 AR-1016-3

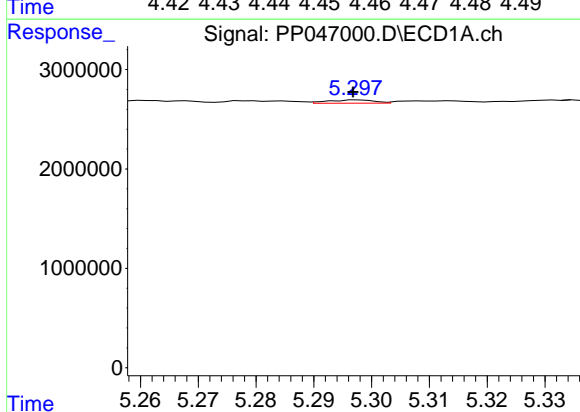
R.T.: 5.199 min  
 Delta R.T.: 0.008 min  
 Response: 240980  
 Conc: 3.37 ng/ml

Instrument :  
 ECD\_P  
 ClientSampleId :  
 CL-55-05-02-22-A



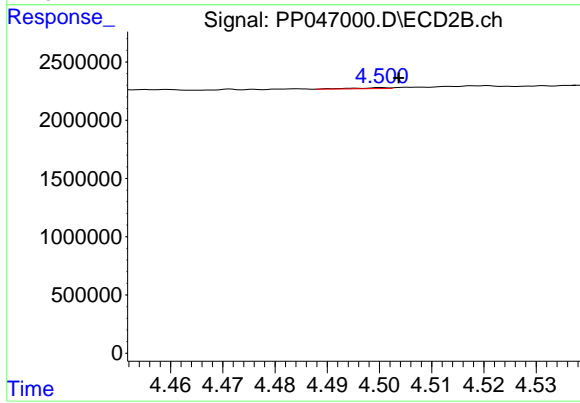
#5 AR-1016-3

R.T.: 4.459 min  
 Delta R.T.: 0.004 min  
 Response: 42176  
 Conc: 0.48 ng/ml



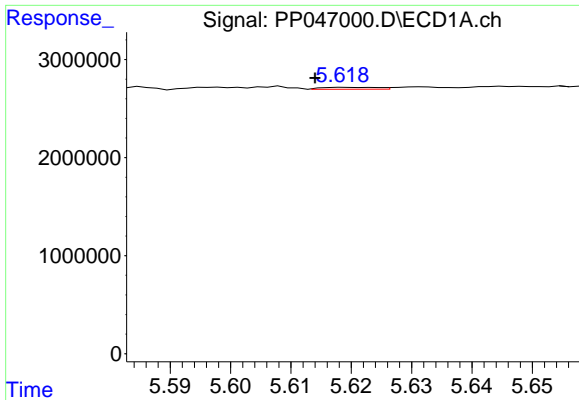
#6 AR-1016-4

R.T.: 5.298 min  
 Delta R.T.: 0.000 min  
 Response: 188553  
 Conc: 3.14 ng/ml



#6 AR-1016-4

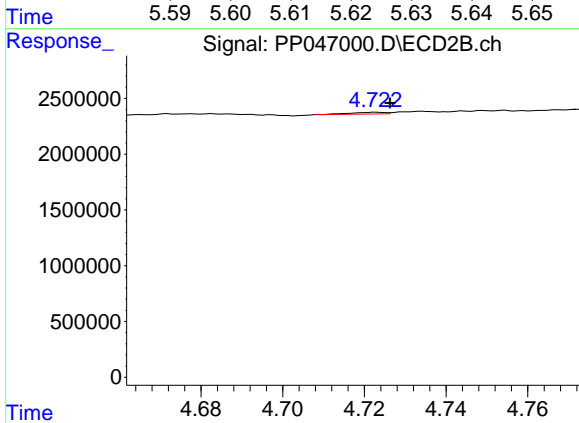
R.T.: 4.500 min  
 Delta R.T.: -0.003 min  
 Response: 41484  
 Conc: 0.60 ng/ml



#7 AR-1016-5

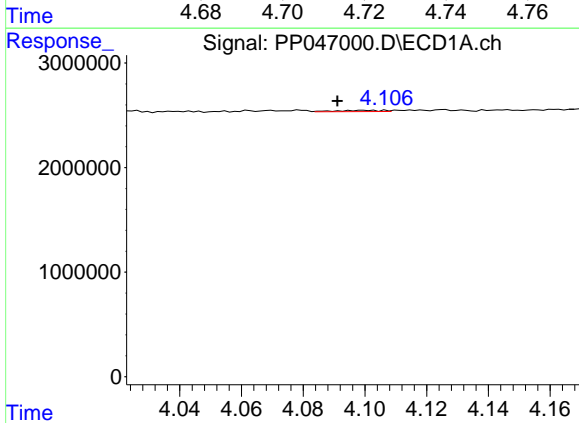
R.T.: 5.619 min  
 Delta R.T.: 0.005 min  
 Response: 130700  
 Conc: 2.47 ng/ml

Instrument :  
 ECD\_P  
 ClientSampleId :  
 CL-55-05-02-22-A



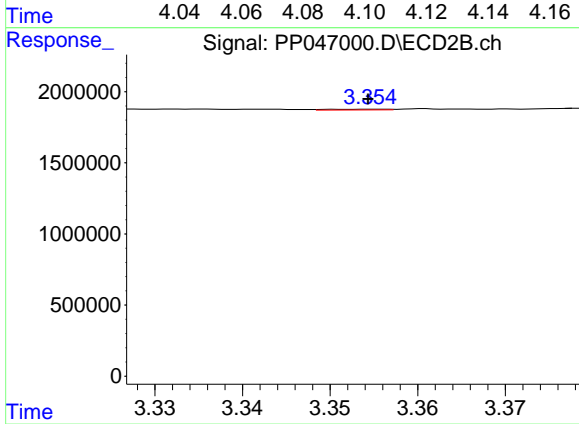
#7 AR-1016-5

R.T.: 4.723 min  
 Delta R.T.: -0.004 min  
 Response: 98493  
 Conc: 1.16 ng/ml



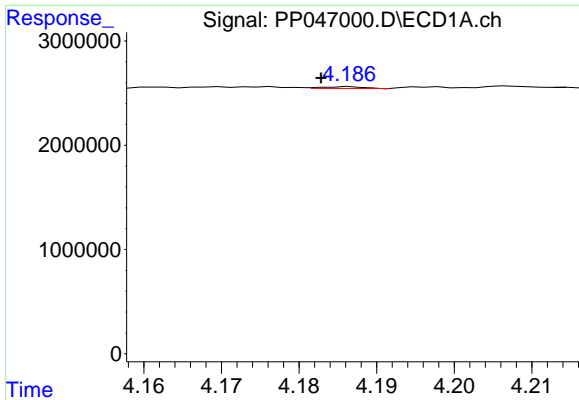
#8 AR-1221-1

R.T.: 4.088 min  
 Delta R.T.: -0.003 min  
 Response: 131010  
 Conc: 4.75 ng/ml



#8 AR-1221-1

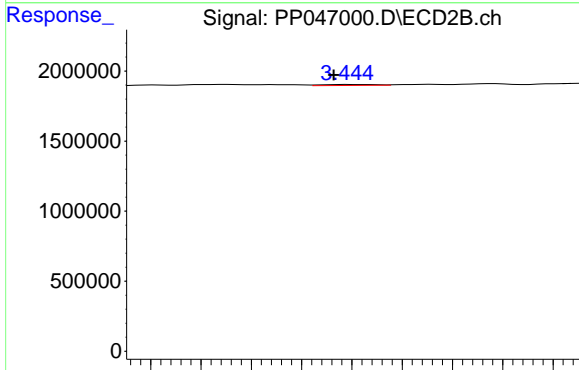
R.T.: 3.355 min  
 Delta R.T.: 0.000 min  
 Response: 26591  
 Conc: 0.60 ng/ml



#9 AR-1221-2

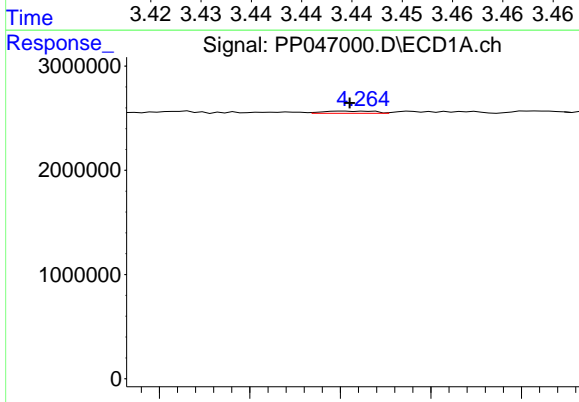
R.T.: 4.187 min  
 Delta R.T.: 0.004 min  
 Response: 59227  
 Conc: 2.92 ng/ml

Instrument :  
 ECD\_P  
 ClientSampleId :  
 CL-55-05-02-22-A



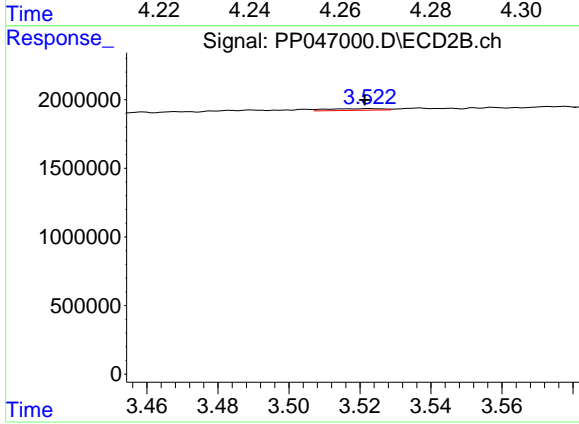
#9 AR-1221-2

R.T.: 3.445 min  
 Delta R.T.: 0.002 min  
 Response: 25812  
 Conc: 0.76 ng/ml



#10 AR-1221-3

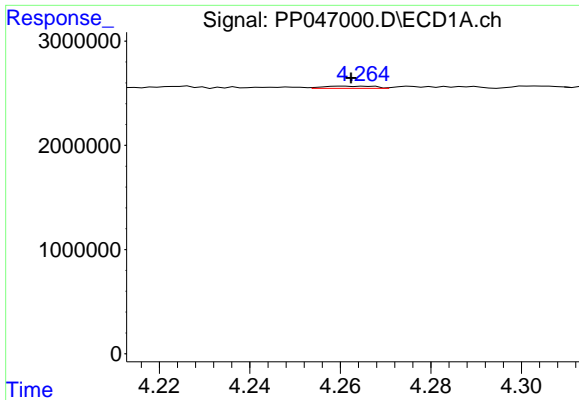
R.T.: 4.260 min  
 Delta R.T.: -0.002 min  
 Response: 171022  
 Conc: 2.62 ng/ml



#10 AR-1221-3

R.T.: 3.523 min  
 Delta R.T.: 0.001 min  
 Response: 139132  
 Conc: 1.40 ng/ml

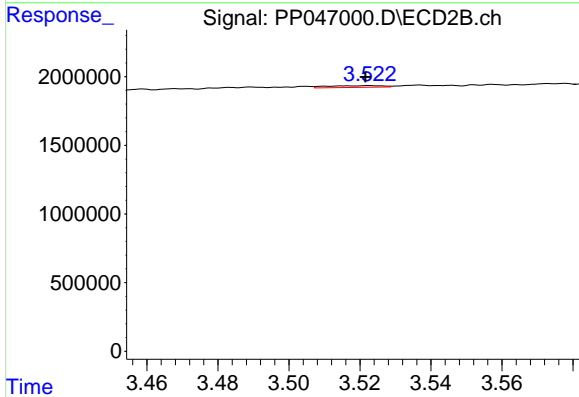




#11 AR-1232-1

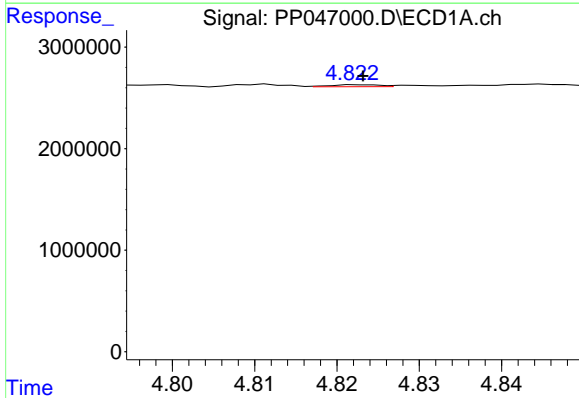
R.T.: 4.260 min  
 Delta R.T.: -0.002 min  
 Response: 171022  
 Conc: 3.49 ng/ml

Instrument :  
 ECD\_P  
 ClientSampleId :  
 CL-55-05-02-22-A



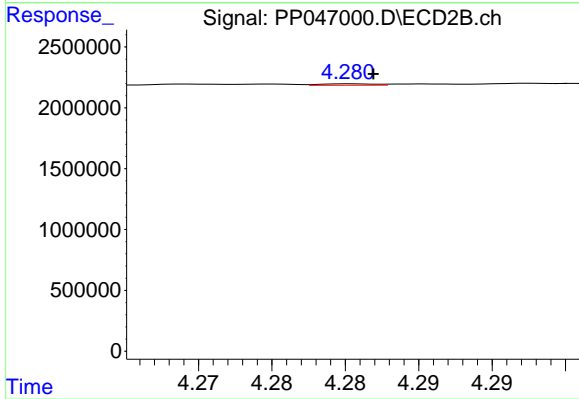
#11 AR-1232-1

R.T.: 3.523 min  
 Delta R.T.: 0.001 min  
 Response: 139132  
 Conc: 1.83 ng/ml



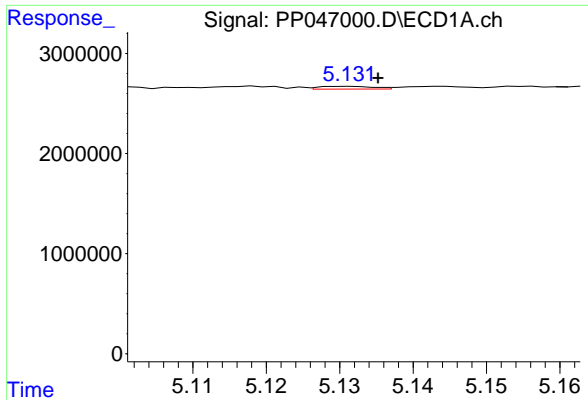
#12 AR-1232-2

R.T.: 4.822 min  
 Delta R.T.: 0.000 min  
 Response: 80897  
 Conc: 3.33 ng/ml



#12 AR-1232-2

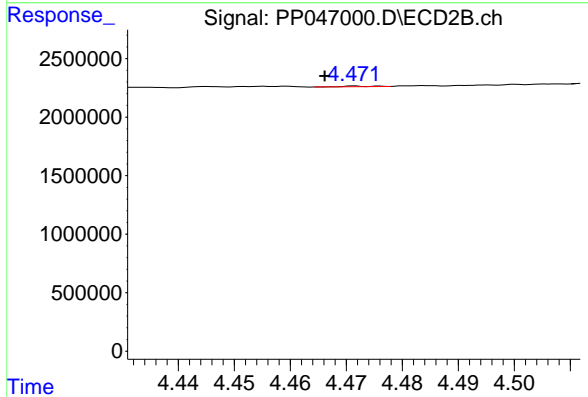
R.T.: 4.280 min  
 Delta R.T.: -0.001 min  
 Response: 31468  
 Conc: 0.44 ng/ml



#13 AR-1232-3

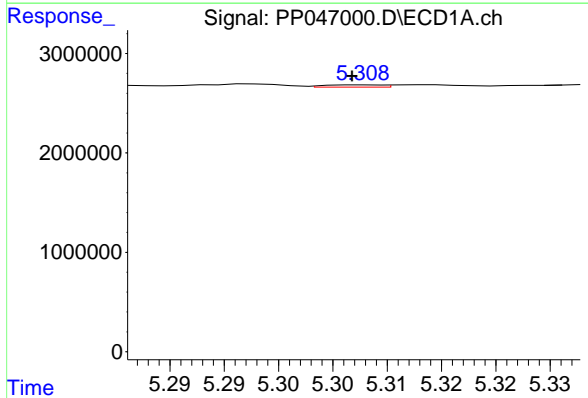
R.T.: 5.132 min  
 Delta R.T.: -0.004 min  
 Response: 143776  
 Conc: 3.04 ng/ml

Instrument :  
 ECD\_P  
 ClientSampleId :  
 CL-55-05-02-22-A



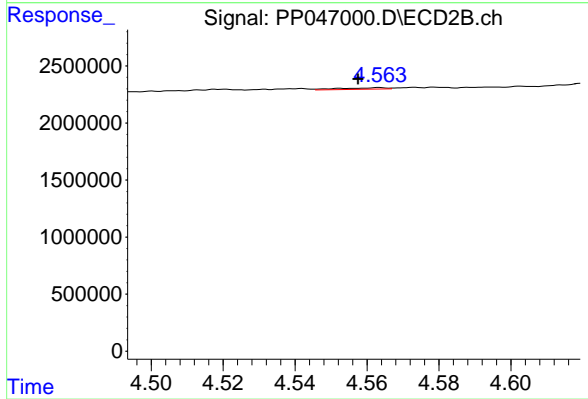
#13 AR-1232-3

R.T.: 4.471 min  
 Delta R.T.: 0.005 min  
 Response: 17395  
 Conc: 0.48 ng/ml



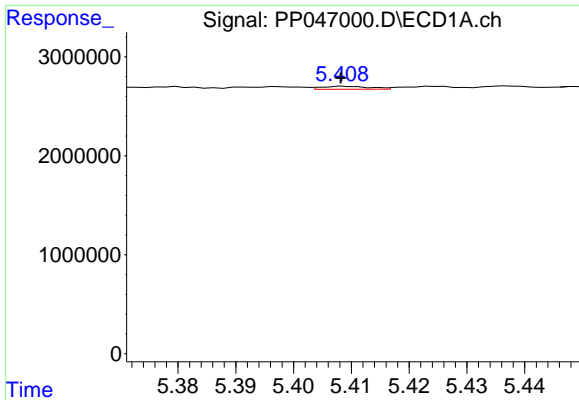
#14 AR-1232-4

R.T.: 5.308 min  
 Delta R.T.: 0.001 min  
 Response: 81341  
 Conc: 3.34 ng/ml



#14 AR-1232-4

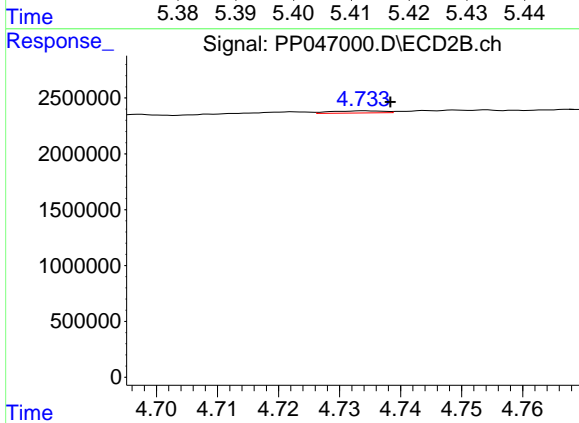
R.T.: 4.563 min  
 Delta R.T.: 0.006 min  
 Response: 115679  
 Conc: 3.63 ng/ml



#15 AR-1232-5

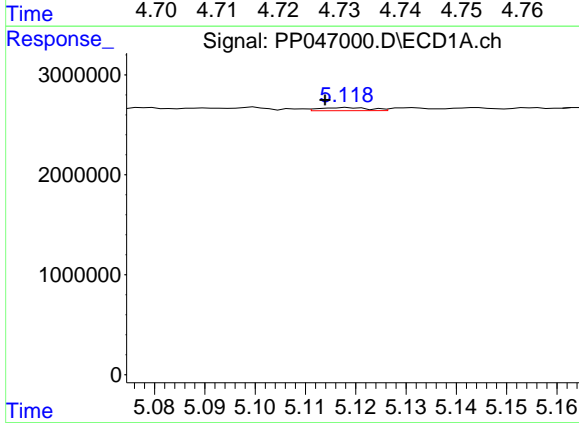
R.T.: 5.409 min  
 Delta R.T.: 0.000 min  
 Response: 171019  
 Conc: 10.28 ng/ml

Instrument :  
 ECD\_P  
 ClientSampleId :  
 CL-55-05-02-22-A



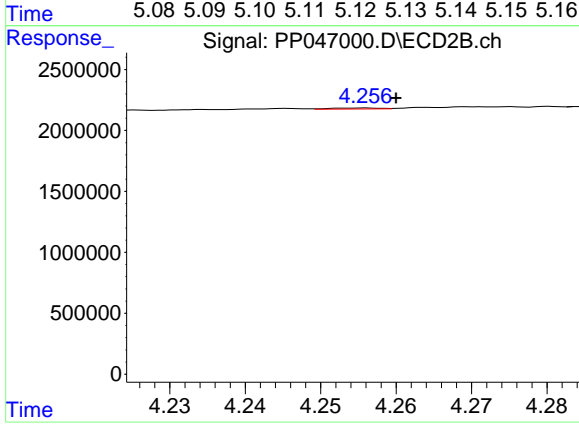
#15 AR-1232-5

R.T.: 4.734 min  
 Delta R.T.: -0.004 min  
 Response: 112711  
 Conc: 3.91 ng/ml



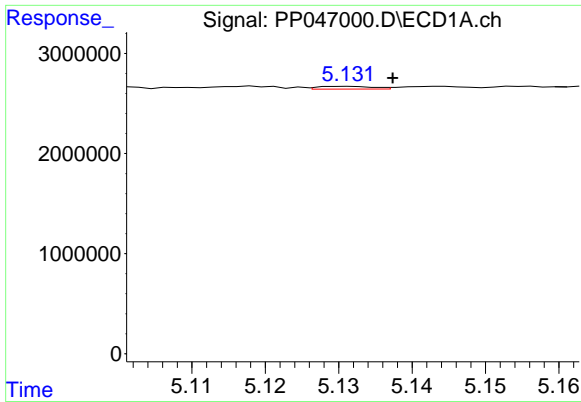
#16 AR-1242-1

R.T.: 5.118 min  
 Delta R.T.: 0.004 min  
 Response: 210474  
 Conc: 3.32 ng/ml



#16 AR-1242-1

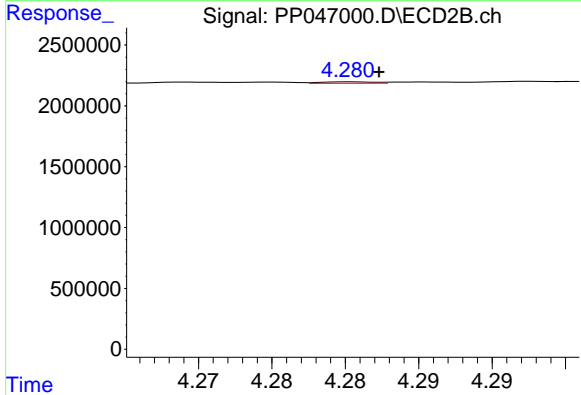
R.T.: 4.256 min  
 Delta R.T.: -0.004 min  
 Response: 36664  
 Conc: 0.37 ng/ml



#17 AR-1242-2

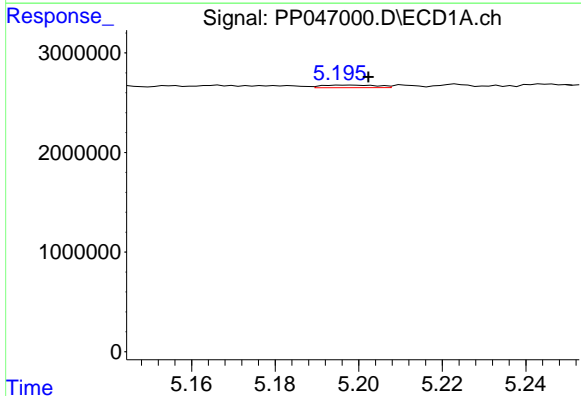
R.T.: 5.132 min  
 Delta R.T.: -0.006 min  
 Response: 143776  
 Conc: 1.51 ng/ml

Instrument :  
 ECD\_P  
 ClientSampleId :  
 CL-55-05-02-22-A



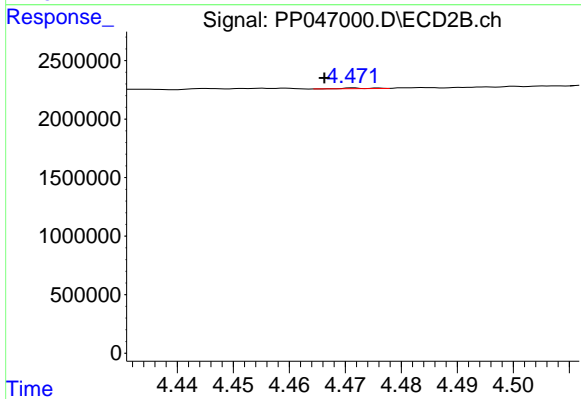
#17 AR-1242-2

R.T.: 4.280 min  
 Delta R.T.: -0.002 min  
 Response: 31468  
 Conc: 0.22 ng/ml



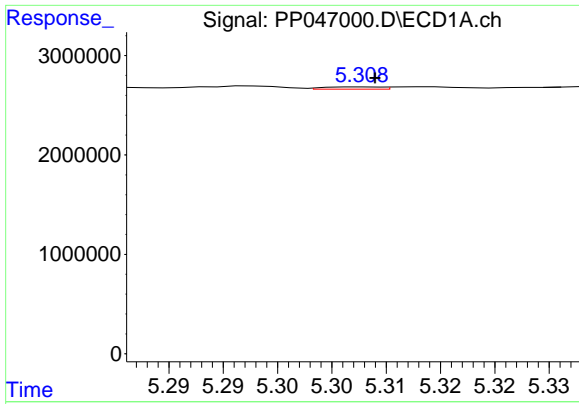
#18 AR-1242-3

R.T.: 5.199 min  
 Delta R.T.: -0.003 min  
 Response: 240980  
 Conc: 4.03 ng/ml



#18 AR-1242-3

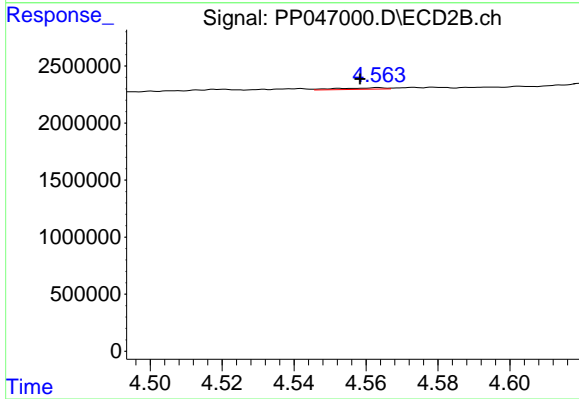
R.T.: 4.471 min  
 Delta R.T.: 0.005 min  
 Response: 17395  
 Conc: 0.23 ng/ml



#19 AR-1242-4

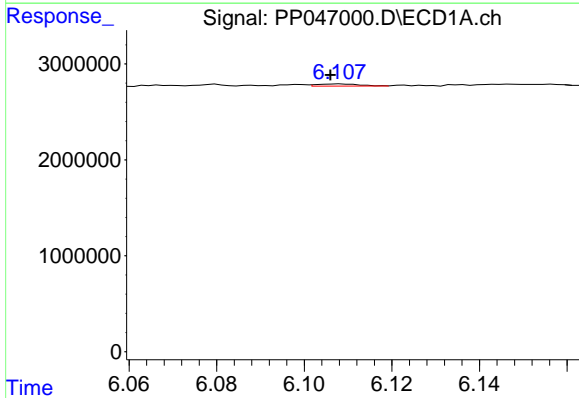
R.T.: 5.308 min  
 Delta R.T.: 0.000 min  
 Response: 81341  
 Conc: 1.61 ng/ml

Instrument :  
 ECD\_P  
 ClientSampleId :  
 CL-55-05-02-22-A



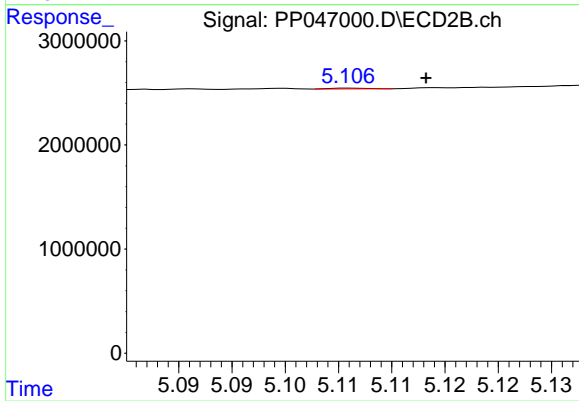
#19 AR-1242-4

R.T.: 4.563 min  
 Delta R.T.: 0.005 min  
 Response: 115679  
 Conc: 1.62 ng/ml



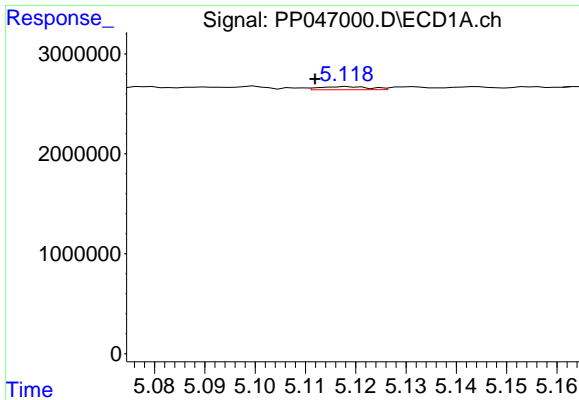
#20 AR-1242-5

R.T.: 6.108 min  
 Delta R.T.: 0.002 min  
 Response: 142709  
 Conc: 2.83 ng/ml



#20 AR-1242-5

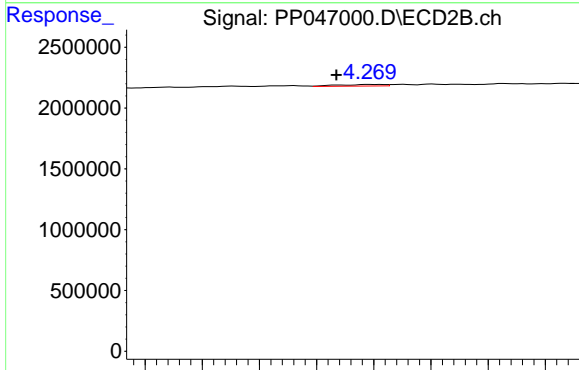
R.T.: 5.106 min  
 Delta R.T.: -0.007 min  
 Response: 19756  
 Conc: 0.20 ng/ml



#21 AR-1248-1

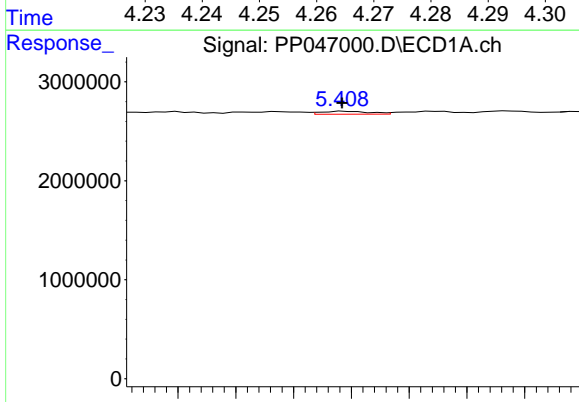
R.T.: 5.118 min  
 Delta R.T.: 0.006 min  
 Response: 210474  
 Conc: 5.04 ng/ml

Instrument :  
 ECD\_P  
 ClientSampleId :  
 CL-55-05-02-22-A



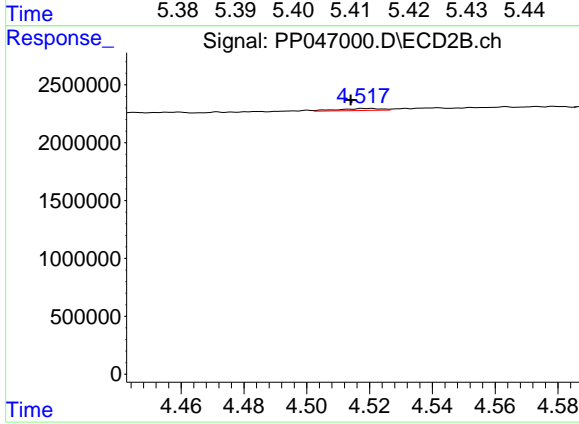
#21 AR-1248-1

R.T.: 4.270 min  
 Delta R.T.: 0.006 min  
 Response: 75557  
 Conc: 1.10 ng/ml



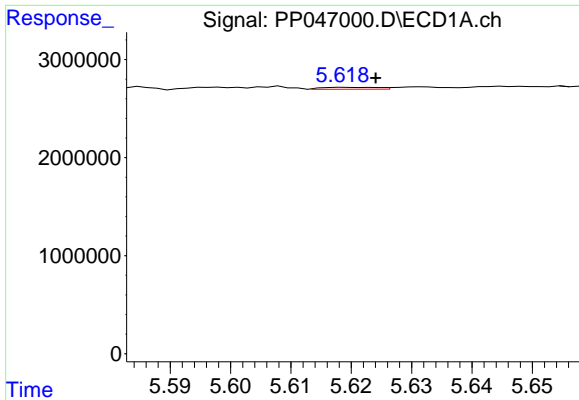
#22 AR-1248-2

R.T.: 5.409 min  
 Delta R.T.: 0.000 min  
 Response: 171019  
 Conc: 2.89 ng/ml



#22 AR-1248-2

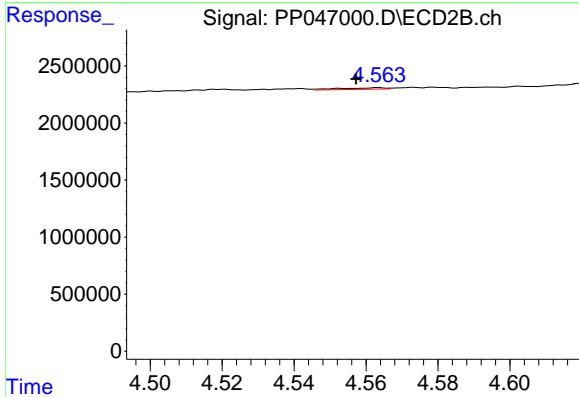
R.T.: 4.521 min  
 Delta R.T.: 0.007 min  
 Response: 163014  
 Conc: 1.74 ng/ml



#23 AR-1248-3

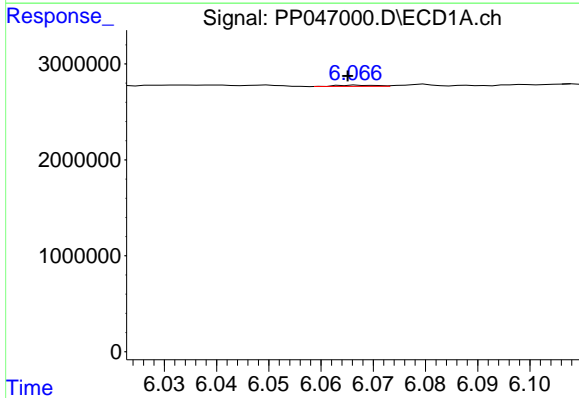
R.T.: 5.619 min  
 Delta R.T.: -0.005 min  
 Response: 130700  
 Conc: 1.87 ng/ml

Instrument :  
 ECD\_P  
 ClientSampleId :  
 CL-55-05-02-22-A



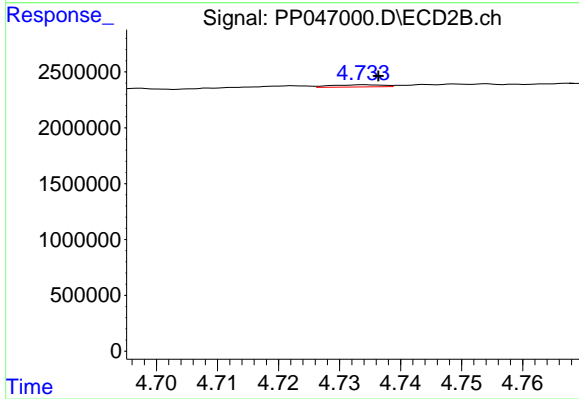
#23 AR-1248-3

R.T.: 4.563 min  
 Delta R.T.: 0.006 min  
 Response: 115679  
 Conc: 1.18 ng/ml



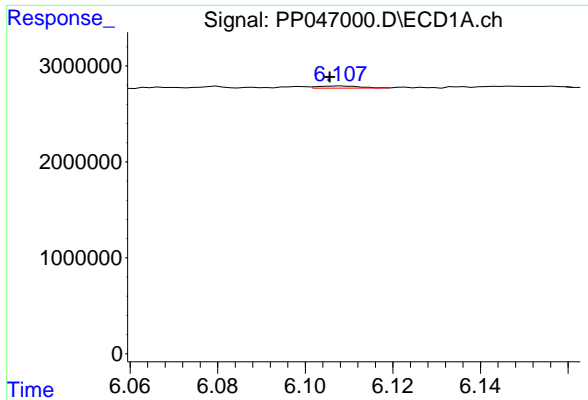
#24 AR-1248-4

R.T.: 6.067 min  
 Delta R.T.: 0.002 min  
 Response: 70559  
 Conc: 0.92 ng/ml



#24 AR-1248-4

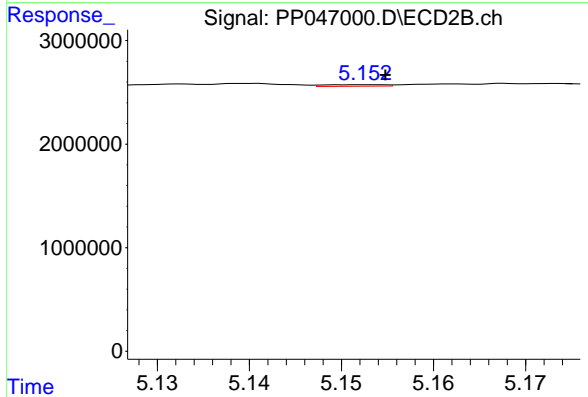
R.T.: 4.734 min  
 Delta R.T.: -0.002 min  
 Response: 112711  
 Conc: 0.96 ng/ml



#25 AR-1248-5

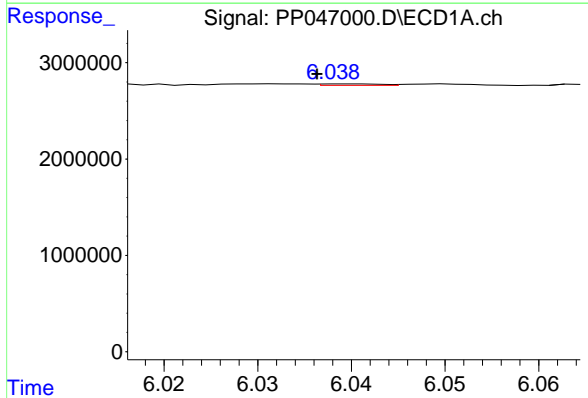
R.T.: 6.108 min  
 Delta R.T.: 0.003 min  
 Response: 142709  
 Conc: 1.83 ng/ml

Instrument :  
 ECD\_P  
 ClientSampleId :  
 CL-55-05-02-22-A



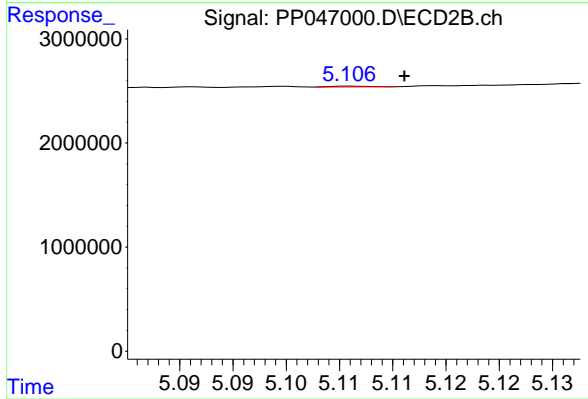
#25 AR-1248-5

R.T.: 5.153 min  
 Delta R.T.: -0.002 min  
 Response: 67255  
 Conc: 0.55 ng/ml



#26 AR-1254-1

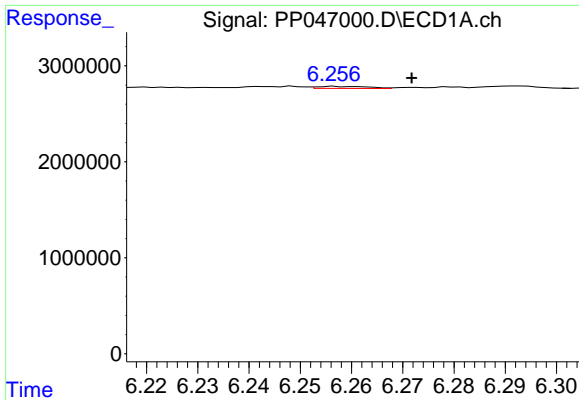
R.T.: 6.039 min  
 Delta R.T.: 0.003 min  
 Response: 65797  
 Conc: 1.13 ng/ml



#26 AR-1254-1

R.T.: 5.106 min  
 Delta R.T.: -0.005 min  
 Response: 19756  
 Conc: 0.10 ng/ml

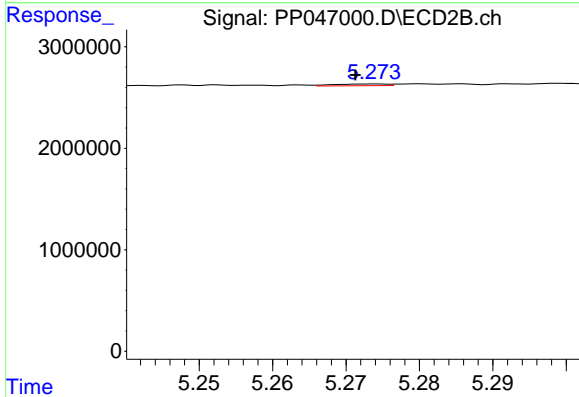




#27 AR-1254-2

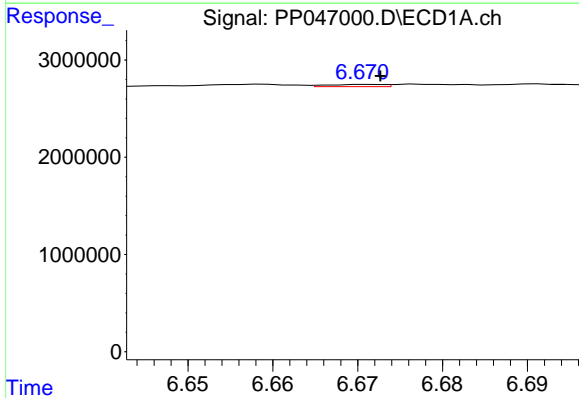
R.T.: 6.257 min  
 Delta R.T.: -0.015 min  
 Response: 147202  
 Conc: 1.19 ng/ml

Instrument :  
 ECD\_P  
 ClientSampleId :  
 CL-55-05-02-22-A



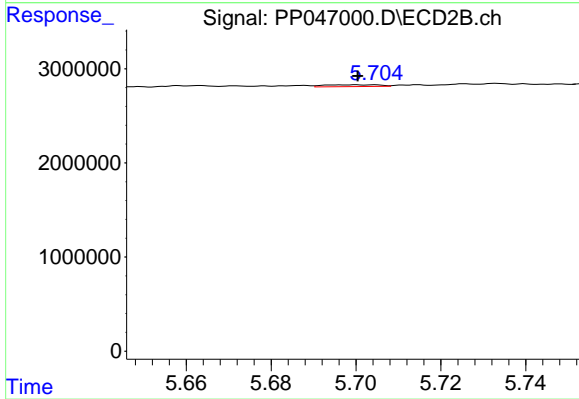
#27 AR-1254-2

R.T.: 5.274 min  
 Delta R.T.: 0.003 min  
 Response: 82997  
 Conc: 0.50 ng/ml



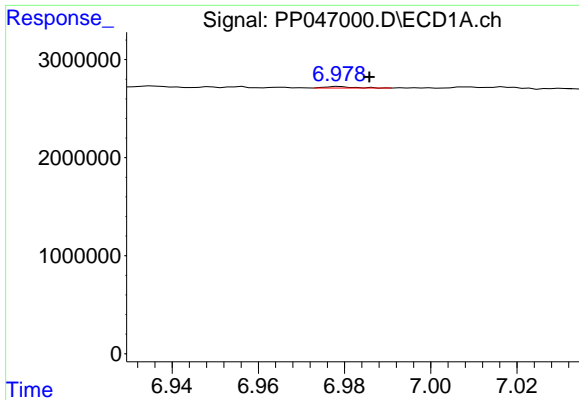
#28 AR-1254-3

R.T.: 6.671 min  
 Delta R.T.: -0.002 min  
 Response: 103156  
 Conc: 0.78 ng/ml



#28 AR-1254-3

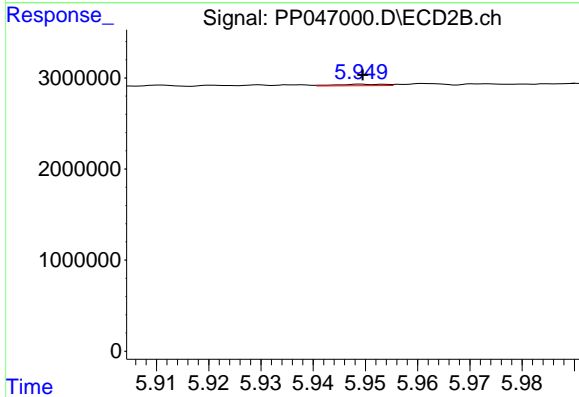
R.T.: 5.700 min  
 Delta R.T.: 0.000 min  
 Response: 178612  
 Conc: 0.72 ng/ml



#29 AR-1254-4

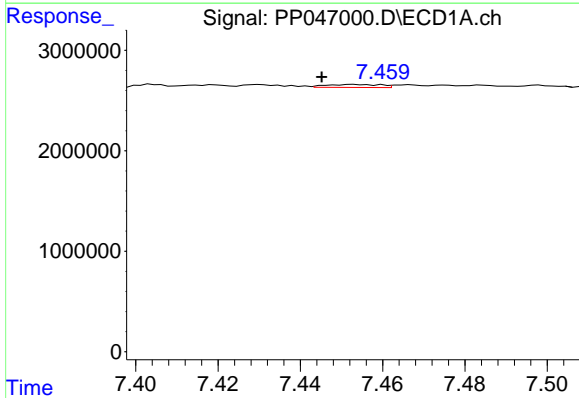
R.T.: 6.979 min  
 Delta R.T.: -0.007 min  
 Response: 72191  
 Conc: 0.73 ng/ml

Instrument :  
 ECD\_P  
 ClientSampleId :  
 CL-55-05-02-22-A



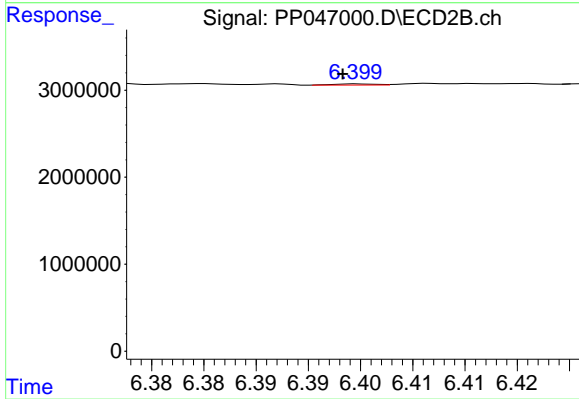
#29 AR-1254-4

R.T.: 5.949 min  
 Delta R.T.: 0.000 min  
 Response: 107816  
 Conc: 0.63 ng/ml



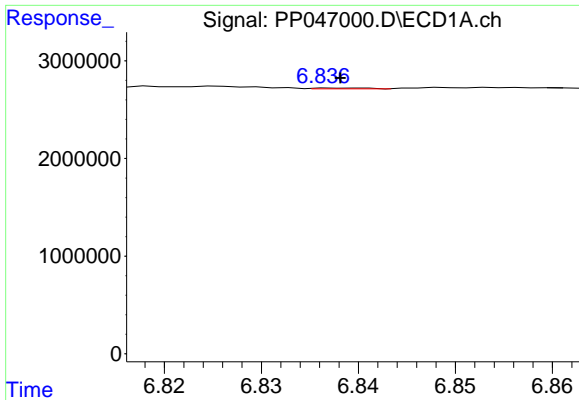
#30 AR-1254-5

R.T.: 7.453 min  
 Delta R.T.: 0.008 min  
 Response: 273311  
 Conc: 3.11 ng/ml



#30 AR-1254-5

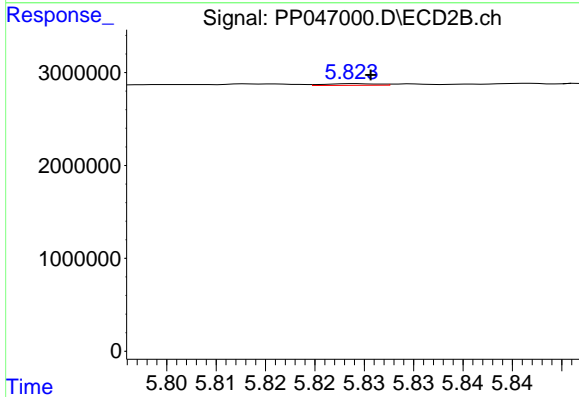
R.T.: 6.400 min  
 Delta R.T.: 0.002 min  
 Response: 35455  
 Conc: 0.16 ng/ml



#31 AR-1260-1

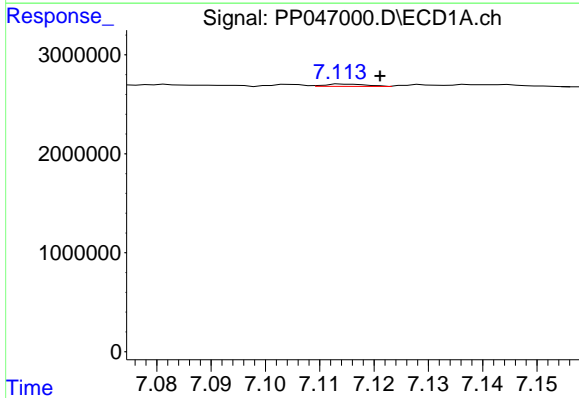
R.T.: 6.840 min  
 Delta R.T.: 0.002 min  
 Response: 31529  
 Conc: 0.37 ng/ml

Instrument :  
 ECD\_P  
 ClientSampleId :  
 CL-55-05-02-22-A



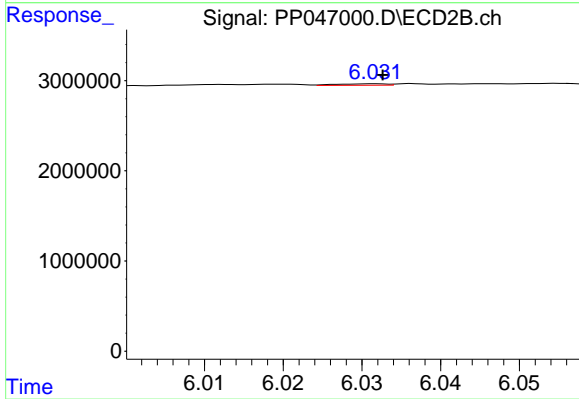
#31 AR-1260-1

R.T.: 5.824 min  
 Delta R.T.: -0.002 min  
 Response: 68368  
 Conc: 0.43 ng/ml



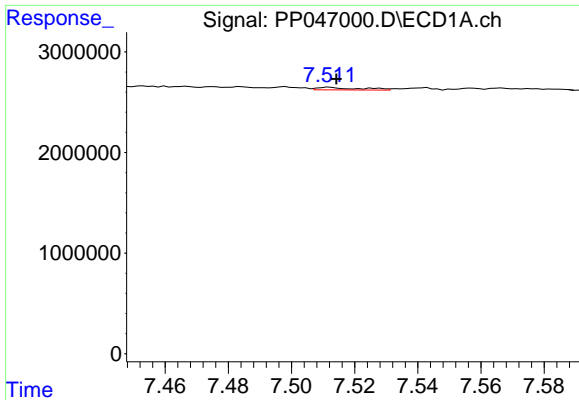
#32 AR-1260-2

R.T.: 7.114 min  
 Delta R.T.: -0.007 min  
 Response: 128226  
 Conc: 1.27 ng/ml



#32 AR-1260-2

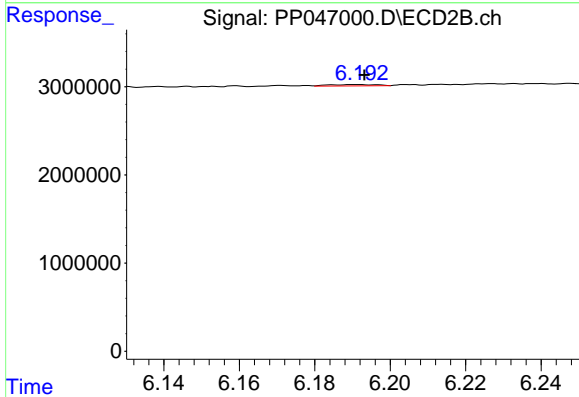
R.T.: 6.032 min  
 Delta R.T.: 0.000 min  
 Response: 74589  
 Conc: 0.37 ng/ml



#33 AR-1260-3

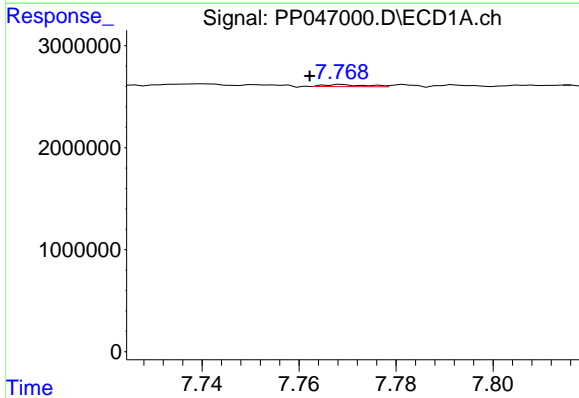
R.T.: 7.512 min  
 Delta R.T.: -0.002 min  
 Response: 242703  
 Conc: 3.00 ng/ml

Instrument :  
 ECD\_P  
 ClientSampleId :  
 CL-55-05-02-22-A



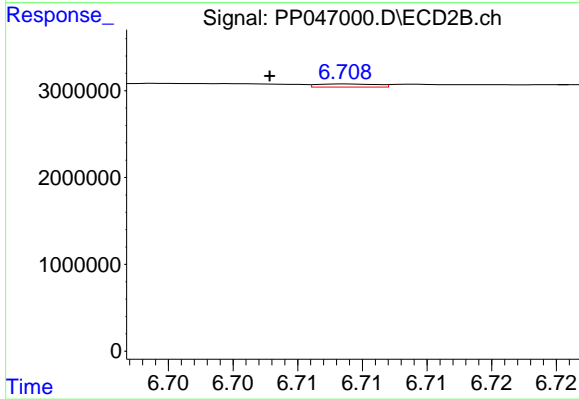
#33 AR-1260-3

R.T.: 6.192 min  
 Delta R.T.: -0.001 min  
 Response: 133359  
 Conc: 0.78 ng/ml



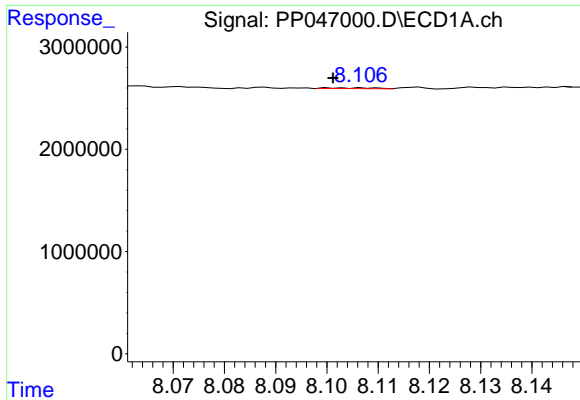
#34 AR-1260-4

R.T.: 7.769 min  
 Delta R.T.: 0.007 min  
 Response: 116170  
 Conc: 1.46 ng/ml



#34 AR-1260-4

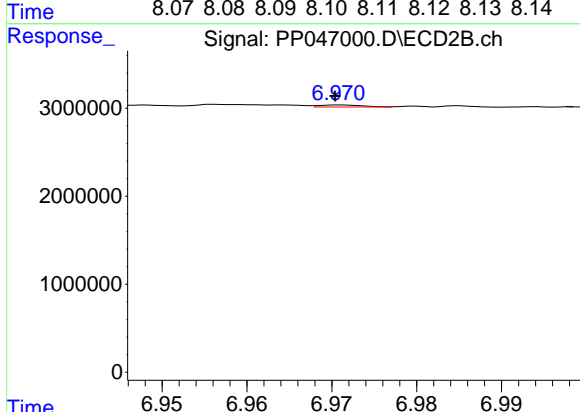
R.T.: 6.709 min  
 Delta R.T.: 0.006 min  
 Response: 116470  
 Conc: 0.80 ng/ml



#35 AR-1260-5

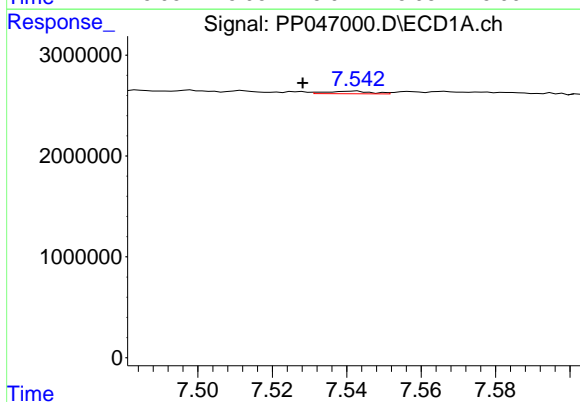
R.T.: 8.101 min  
 Delta R.T.: 0.000 min  
 Response: 51248  
 Conc: 0.32 ng/ml

Instrument :  
 ECD\_P  
 ClientSampleId :  
 CL-55-05-02-22-A



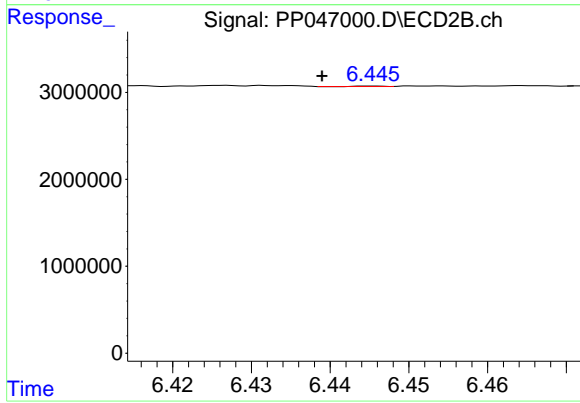
#35 AR-1260-5

R.T.: 6.971 min  
 Delta R.T.: 0.000 min  
 Response: 80708  
 Conc: 0.23 ng/ml



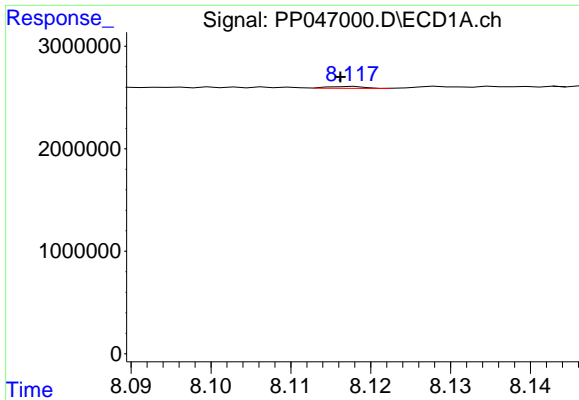
#36 AR-1262-1

R.T.: 7.543 min  
 Delta R.T.: 0.015 min  
 Response: 208555  
 Conc: 1.73 ng/ml



#36 AR-1262-1

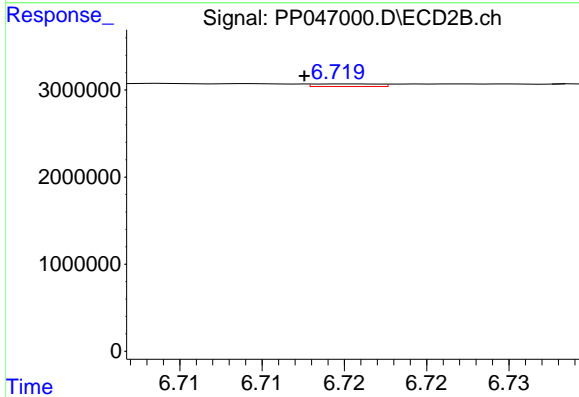
R.T.: 6.445 min  
 Delta R.T.: 0.006 min  
 Response: 7226  
 Conc: 0.03 ng/ml



#37 AR-1262-2

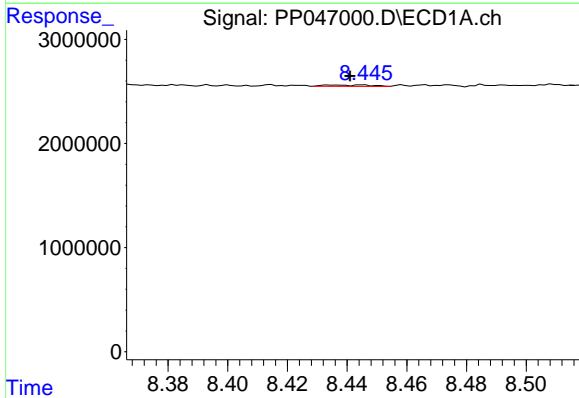
R.T.: 8.118 min  
 Delta R.T.: 0.002 min  
 Response: 59266  
 Conc: 0.31 ng/ml

Instrument :  
 ECD\_P  
 ClientSampleId :  
 CL-55-05-02-22-A



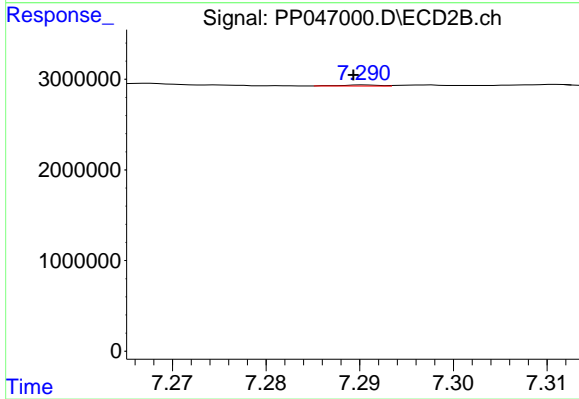
#37 AR-1262-2

R.T.: 6.720 min  
 Delta R.T.: 0.002 min  
 Response: 82886  
 Conc: 0.43 ng/ml



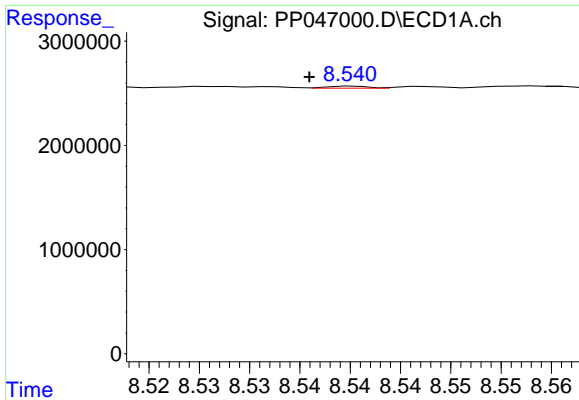
#38 AR-1262-3

R.T.: 8.446 min  
 Delta R.T.: 0.005 min  
 Response: 149538  
 Conc: 1.11 ng/ml



#38 AR-1262-3

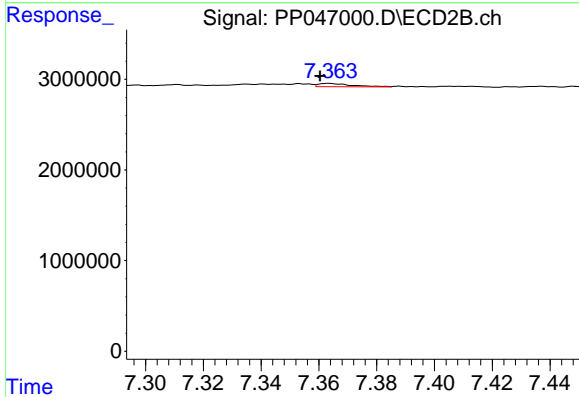
R.T.: 7.291 min  
 Delta R.T.: 0.001 min  
 Response: 32080  
 Conc: 0.20 ng/ml



#39 AR-1262-4

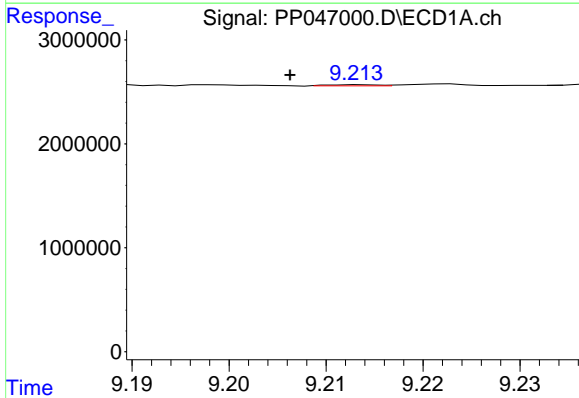
R.T.: 8.540 min  
 Delta R.T.: 0.004 min  
 Response: 58533  
 Conc: 0.93 ng/ml

Instrument :  
 ECD\_P  
 ClientSampleId :  
 CL-55-05-02-22-A



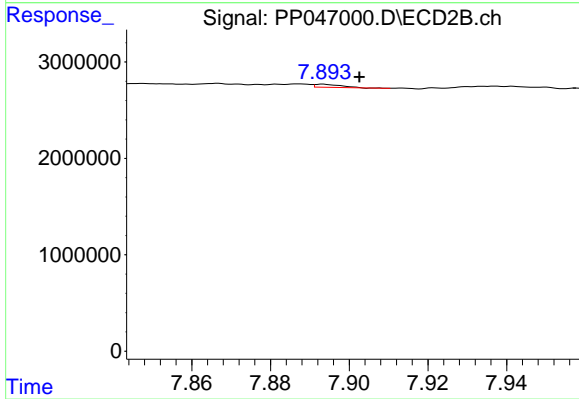
#39 AR-1262-4

R.T.: 7.364 min  
 Delta R.T.: 0.003 min  
 Response: 300646  
 Conc: 1.05 ng/ml



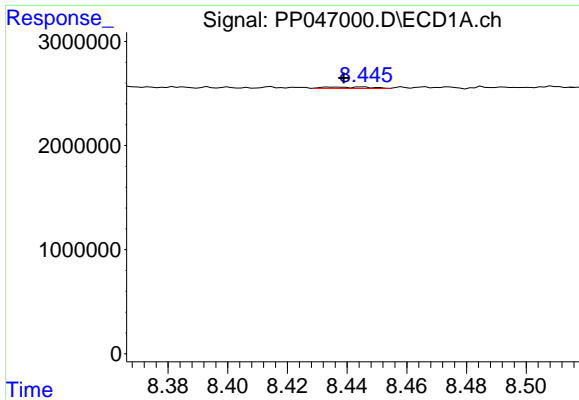
#40 AR-1262-5

R.T.: 9.213 min  
 Delta R.T.: 0.007 min  
 Response: 40618  
 Conc: 0.59 ng/ml



#40 AR-1262-5

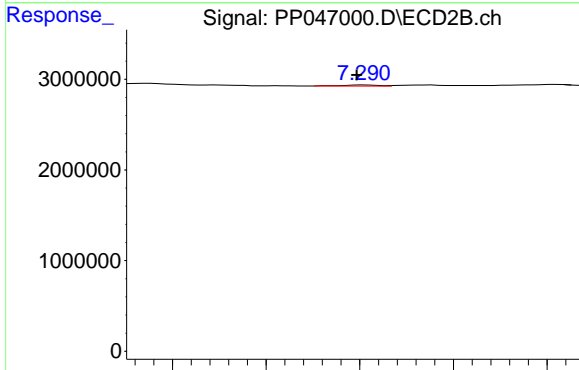
R.T.: 7.893 min  
 Delta R.T.: -0.009 min  
 Response: 155374  
 Conc: 1.18 ng/ml



#41 AR-1268-1

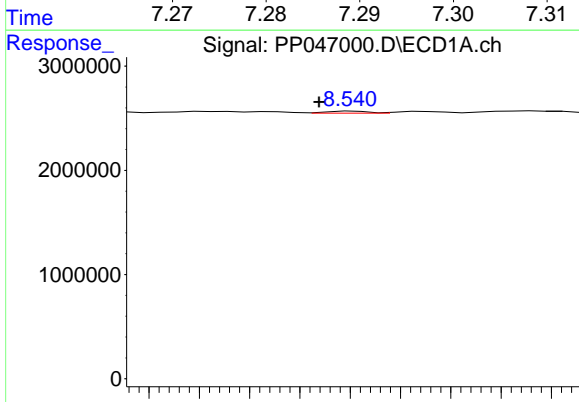
R.T.: 8.446 min  
 Delta R.T.: 0.007 min  
 Response: 149538  
 Conc: 0.62 ng/ml

Instrument :  
 ECD\_P  
 ClientSampleId :  
 CL-55-05-02-22-A



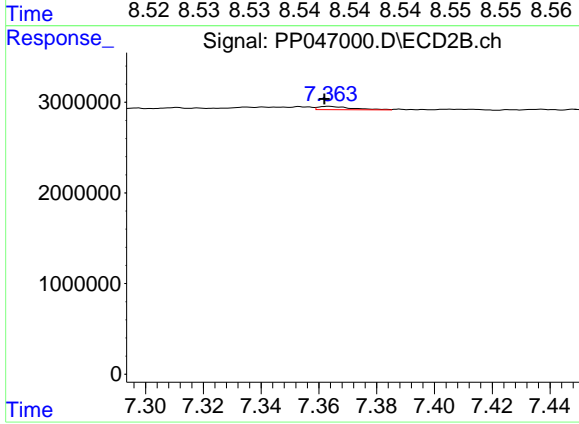
#41 AR-1268-1

R.T.: 7.291 min  
 Delta R.T.: 0.000 min  
 Response: 32080  
 Conc: 0.07 ng/ml



#42 AR-1268-2

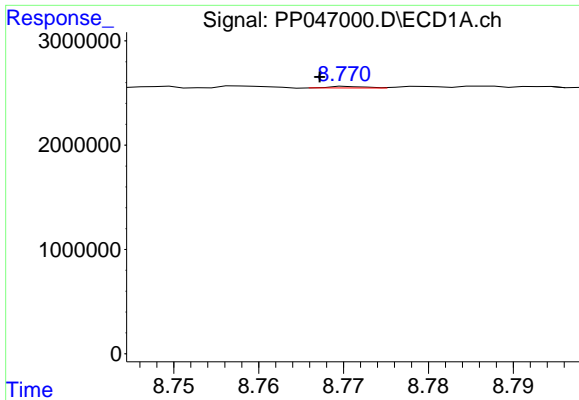
R.T.: 8.540 min  
 Delta R.T.: 0.004 min  
 Response: 58533  
 Conc: 0.26 ng/ml



#42 AR-1268-2

R.T.: 7.364 min  
 Delta R.T.: 0.002 min  
 Response: 300646  
 Conc: 0.71 ng/ml

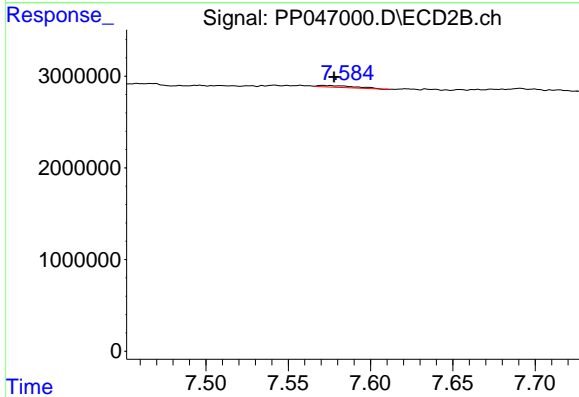




#43 AR-1268-3

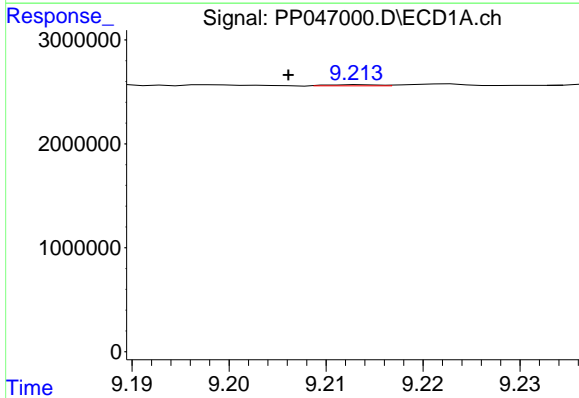
R.T.: 8.771 min  
 Delta R.T.: 0.004 min  
 Response: 42896  
 Conc: 0.22 ng/ml

Instrument :  
 ECD\_P  
 ClientSampleId :  
 CL-55-05-02-22-A



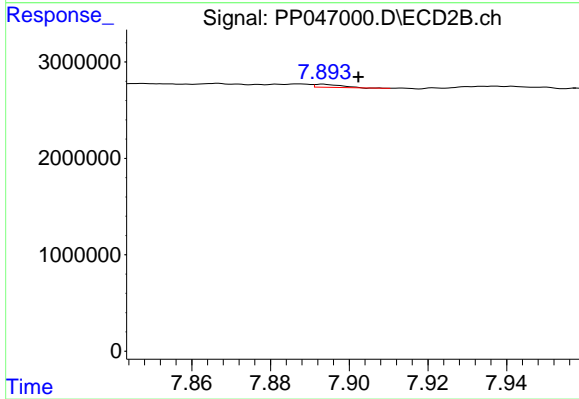
#43 AR-1268-3

R.T.: 7.571 min  
 Delta R.T.: -0.007 min  
 Response: 294464  
 Conc: 0.83 ng/ml



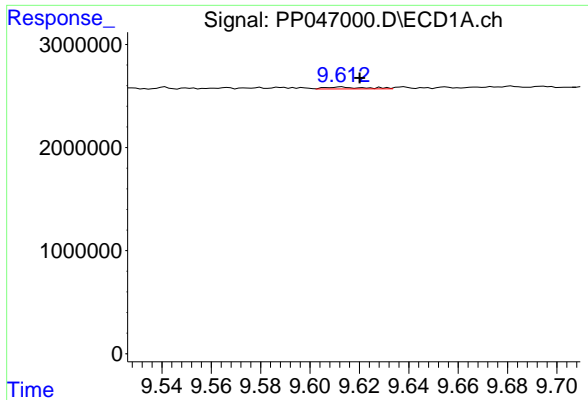
#44 AR-1268-4

R.T.: 9.213 min  
 Delta R.T.: 0.007 min  
 Response: 40618  
 Conc: 0.53 ng/ml



#44 AR-1268-4

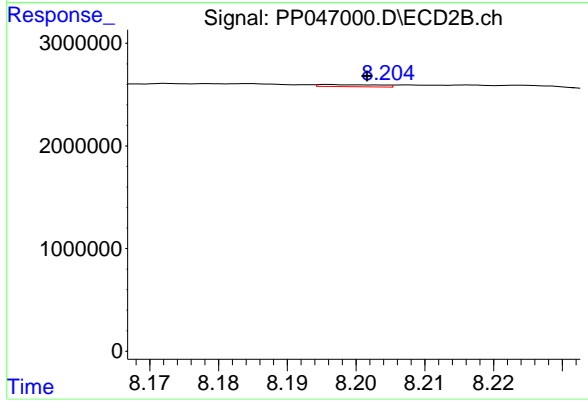
R.T.: 7.893 min  
 Delta R.T.: -0.009 min  
 Response: 155374  
 Conc: 1.06 ng/ml



#45 AR-1268-5

R.T.: 9.613 min  
 Delta R.T.: -0.007 min  
 Response: 201955  
 Conc: 0.36 ng/ml

Instrument :  
 ECD\_P  
 ClientSampleId :  
 CL-55-05-02-22-A



#45 AR-1268-5

R.T.: 8.196 min  
 Delta R.T.: -0.005 min  
 Response: 124840  
 Conc: 0.12 ng/ml