

Data Path : Z:\pestpcbsrv\HPCHEM1\ECD\_P\Data\PP050422\  
 Data File : PP047002.D  
 Signal(s) : Signal #1: ECD1A.ch Signal #2: ECD2B.ch  
 Acq On : 04 May 2022 19:41  
 Operator : YP\AJ  
 Sample : N2651-05 10X  
 Misc :  
 ALS Vial : 23 Sample Multiplier: 1

Instrument :  
 ECD\_P  
 ClientSampleId :  
 CL-56-05-02-22-A

Integration File signal 1: autoint1.e  
 Integration File signal 2: autoint2.e  
 Quant Time: May 05 05:27:34 2022  
 Quant Method : Z:\pestpcbsrv\HPCHEM1\ECD\_P\methods\PP042222.M  
 Quant Title : GC EXTRACTABLES  
 QLast Update : Tue May 03 11:45:42 2022  
 Response via : Initial Calibration  
 Integrator: ChemStation

Volume Inj. : 2 µl  
 Signal #1 Phase : ZB-MR1 Signal #2 Phase: ZB-MR2  
 Signal #1 Info : 30Mx0.32mmx 0.50µ Signal #2 Info : 30M x 0.32mm x 0.25µm

Compound	RT#1	RT#2	Resp#1	Resp#2	ng/ml	ng/ml
System Monitoring Compounds						
1) SA Tetrachlo...	3.857	3.123	3971157	6123268	1.645	1.867
2) SA Decachlor...	9.968f	8.435	280407	5214372	0.191	2.186 #
Target Compounds						
3) L1 AR-1016-1	5.097	4.250	91406	47243	1.214	0.411 #
4) L1 AR-1016-2	5.124	4.267	178927	306011	1.571	1.804
5) L1 AR-1016-3	5.180	4.452	228818	228442	3.201	2.609
6) L1 AR-1016-4	5.305	4.502	294755	203766	4.903	2.927 #
7) L1 AR-1016-5	5.616	4.726	199918	71433	3.776	0.840 #
8) L2 AR-1221-1	4.092	3.346	199278	23650	7.226	0.536 #
9) L2 AR-1221-2	4.179	3.442	85228	32979	4.198	0.976 #
10) L2 AR-1221-3	4.258	3.519	223352	24687	3.426	0.249 #
11) L3 AR-1232-1	4.258	3.519	223352	24687	4.562	0.325 #
12) L3 AR-1232-2	4.818	4.284	170249	42326	7.014	0.587 #
13) L3 AR-1232-3	5.143	4.466	206638	26500	4.375	0.728 #
14) L3 AR-1232-4	5.305	4.557	294755	64144	12.114	2.014 #
15) L3 AR-1232-5	5.406	4.740	120767	89998	7.258	3.124 #
16) L4 AR-1242-1	5.112	4.267	200651	306011	3.165	3.104
17) L4 AR-1242-2	5.143	4.284	206638	42326	2.169	0.292 #
18) L4 AR-1242-3	5.210	4.466	187282	26500	3.128	0.357 #
19) L4 AR-1242-4	5.305	4.557	294755	64144	5.828	0.898 #
20) L4 AR-1242-5	6.107	5.102	183139	123364	3.634	1.279 #
21) L5 AR-1248-1	5.112	4.267	200651	306011	4.801	4.453
22) L5 AR-1248-2	5.406	4.525	120767	227699	2.043	2.435
23) L5 AR-1248-3	5.616	4.557	199918	64144	2.862	0.657 #
24) L5 AR-1248-4	6.074	4.740	147662	89998	1.926	0.765 #
25) L5 AR-1248-5	6.107	5.149	183139	72137	2.355	0.592 #
26) L6 AR-1254-1	6.037	5.102	117650	123364	2.025	0.639 #
27) L6 AR-1254-2	6.277	5.270	369683	172358	3.000	1.035 #
28) L6 AR-1254-3	6.676	5.705	460220	260485	3.478	1.045 #
29) L6 AR-1254-4	6.983	5.953	61024	82910	0.614	0.483
30) L6 AR-1254-5	7.457	6.396	276372	42186	3.142	0.193 #
31) L7 AR-1260-1	6.833	5.824	562960	593195	6.671	3.728 #
32) L7 AR-1260-2	7.116	6.033	418589	890333	4.157	4.377
33) L7 AR-1260-3	7.515	6.191	410191	690424	5.063	4.042
34) L7 AR-1260-4	7.767	6.701	64863	634567	0.814	4.366 #
35) L7 AR-1260-5	8.094	6.968	470970	1194380	2.965	3.402
36) L8 AR-1262-1	7.540	6.443	234719	20420	1.942	0.083 #
37) L8 AR-1262-2	8.139f	6.720	66482	124660	0.346	0.645 #
38) L8 AR-1262-3	8.447	7.292	185476	106571	1.381	0.656 #
39) L8 AR-1262-4	8.539	7.363	98807	40032	1.569	0.140 #
40) L8 AR-1262-5	9.211	7.908	47392	97176	0.687	0.741
41) L9 AR-1268-1	8.434	7.292	236377	106571	0.983	0.222 #

Data Path : Z:\pestpcbsrv\HPCHEM1\ECD\_P\Data\PP050422\  
 Data File : PP047002.D  
 Signal(s) : Signal #1: ECD1A.ch Signal #2: ECD2B.ch  
 Acq On : 04 May 2022 19:41  
 Operator : YP\AJ  
 Sample : N2651-05 10X  
 Misc :  
 ALS Vial : 23 Sample Multiplier: 1

Instrument :  
 ECD\_P  
 ClientSampleId :  
 CL-56-05-02-22-A

Integration File signal 1: autoint1.e  
 Integration File signal 2: autoint2.e  
 Quant Time: May 05 05:27:34 2022  
 Quant Method : Z:\pestpcbsrv\HPCHEM1\ECD\_P\methods\PP042222.M  
 Quant Title : GC EXTRACTABLES  
 QLast Update : Tue May 03 11:45:42 2022  
 Response via : Initial Calibration  
 Integrator: ChemStation

Volume Inj. : 2 µl  
 Signal #1 Phase : ZB-MR1 Signal #2 Phase: ZB-MR2  
 Signal #1 Info : 30Mx0.32mmx 0.50µ Signal #2 Info : 30M x 0.32mm x 0.25µm

	Compound	RT#1	RT#2	Resp#1	Resp#2	ng/ml	ng/ml
42)	L9 AR-1268-2	8.539	7.363	98807	40032	0.446	0.095 #
43)	L9 AR-1268-3	8.759	7.576	115320	36305	0.600	0.103 #
44)	L9 AR-1268-4	9.211	7.908	47392	97176	0.614	0.661
45)	L9 AR-1268-5	9.615	8.203	101316	22108	0.181	0.022 #

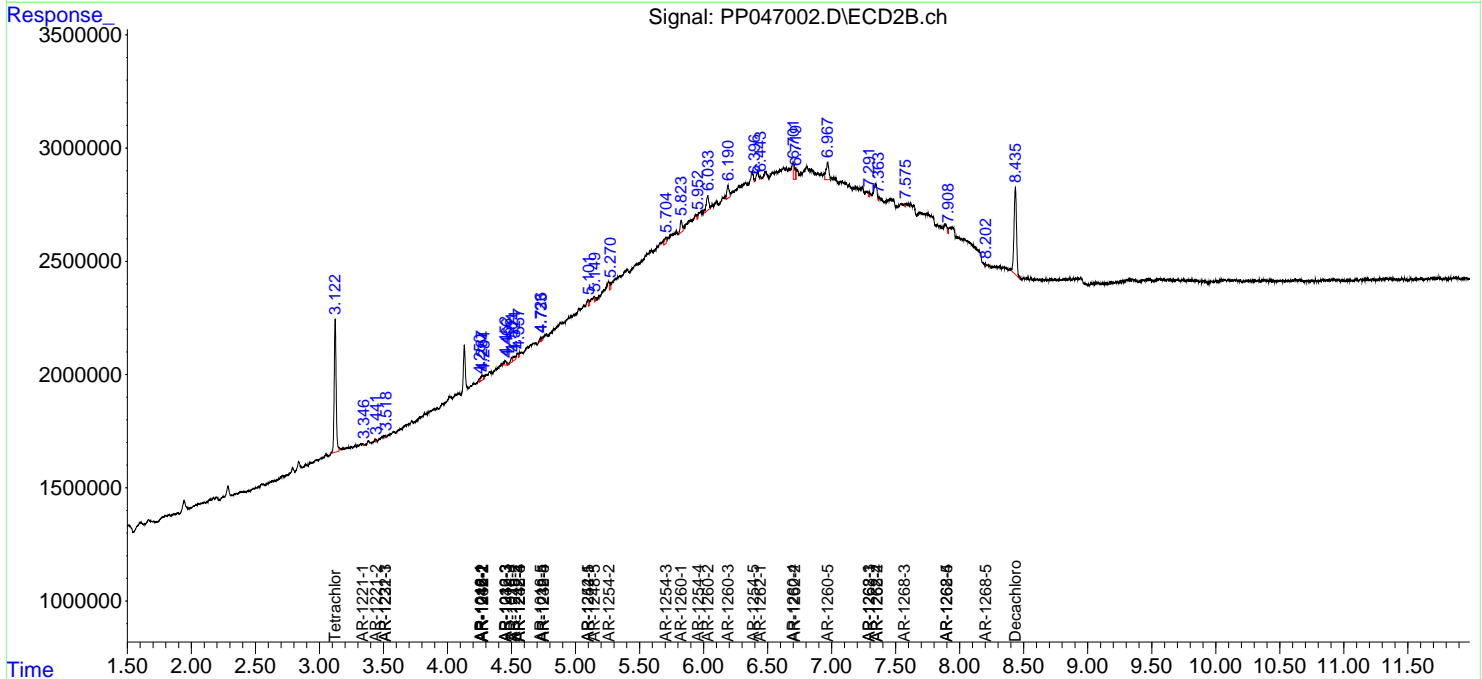
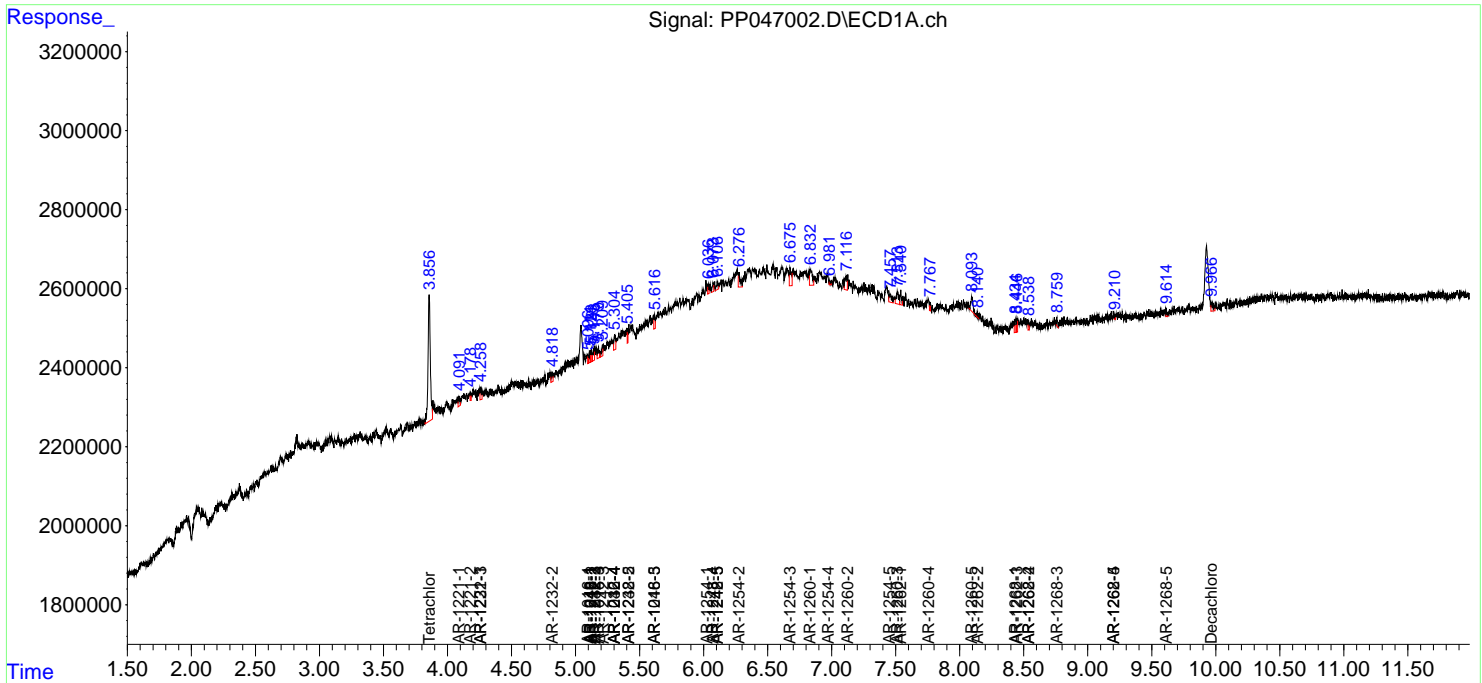
(f)=RT Delta > 1/2 Window (#)=Amounts differ by > 25% (m)=manual int.

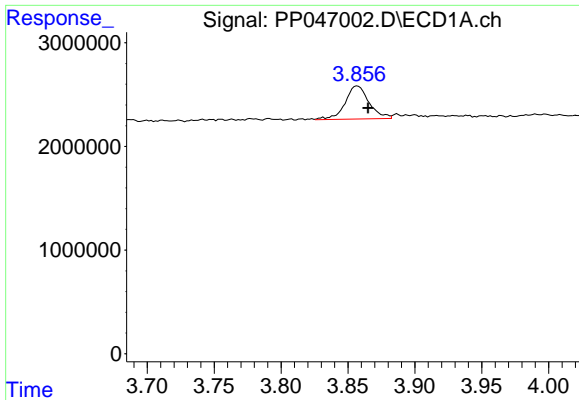
Data Path : Z:\pestpcbsrv\HPCHEM1\ECD\_P\Data\PP050422\  
 Data File : PP047002.D  
 Signal(s) : Signal #1: ECD1A.ch Signal #2: ECD2B.ch  
 Acq On : 04 May 2022 19:41  
 Operator : YP\AJ  
 Sample : N2651-05 10X  
 Misc :  
 ALS Vial : 23 Sample Multiplier: 1

Instrument :  
 ECD\_P  
 ClientSampleId :  
 CL-56-05-02-22-A

Integration File signal 1: autoint1.e  
 Integration File signal 2: autoint2.e  
 Quant Time: May 05 05:27:34 2022  
 Quant Method : Z:\pestpcbsrv\HPCHEM1\ECD\_P\methods\PP042222.M  
 Quant Title : GC EXTRACTABLES  
 QLast Update : Tue May 03 11:45:42 2022  
 Response via : Initial Calibration  
 Integrator: ChemStation

Volume Inj. : 2 µl  
 Signal #1 Phase : ZB-MR1 Signal #2 Phase: ZB-MR2  
 Signal #1 Info : 30Mx0.32mmx 0.50µ Signal #2 Info : 30M x 0.32mm x 0.25µm

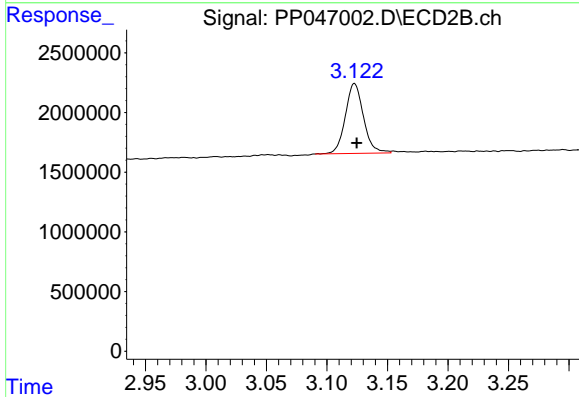




#1 Tetrachloro-m-xylene

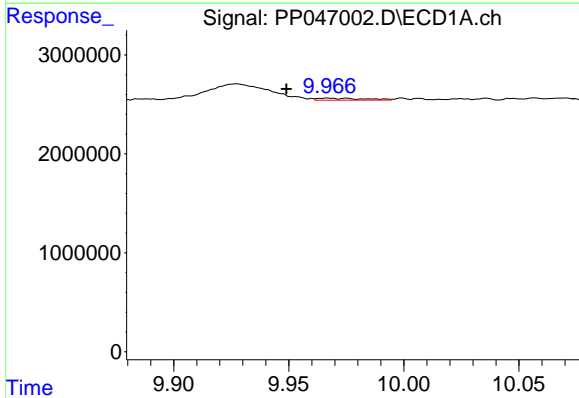
R.T.: 3.857 min  
 Delta R.T.: -0.008 min  
 Response: 3971157  
 Conc: 1.65 ng/ml

Instrument :  
 ECD\_P  
 ClientSampleId :  
 CL-56-05-02-22-A



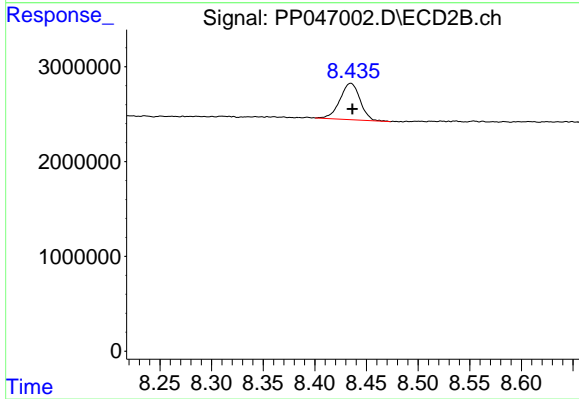
#1 Tetrachloro-m-xylene

R.T.: 3.123 min  
 Delta R.T.: -0.002 min  
 Response: 6123268  
 Conc: 1.87 ng/ml



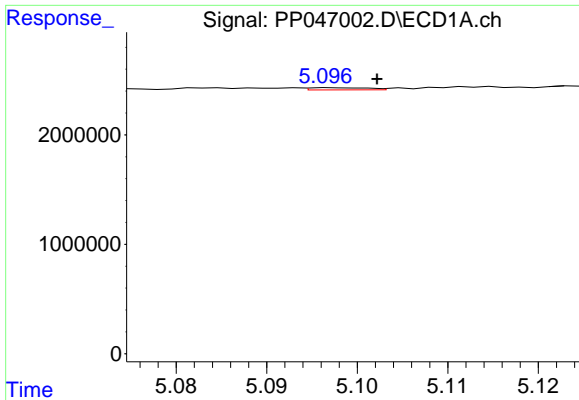
#2 Decachlorobiphenyl

R.T.: 9.968 min  
 Delta R.T.: 0.019 min  
 Response: 280407  
 Conc: 0.19 ng/ml



#2 Decachlorobiphenyl

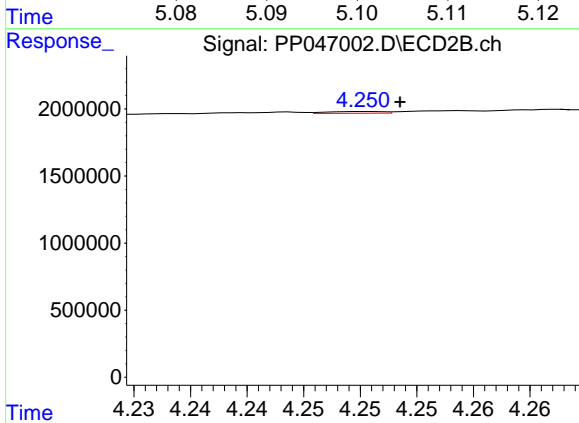
R.T.: 8.435 min  
 Delta R.T.: -0.002 min  
 Response: 5214372  
 Conc: 2.19 ng/ml



#3 AR-1016-1

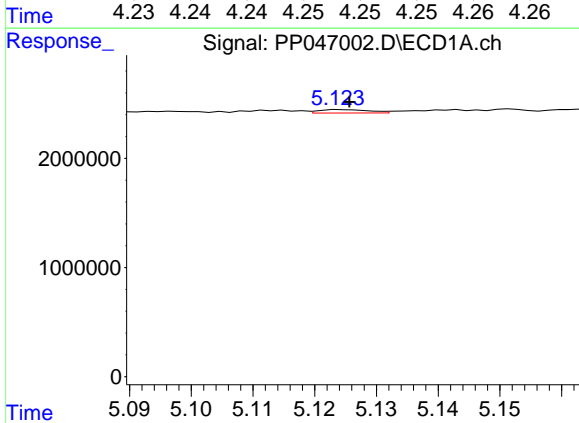
R.T.: 5.097 min  
 Delta R.T.: -0.005 min  
 Response: 91406  
 Conc: 1.21 ng/ml

Instrument :  
 ECD\_P  
 ClientSampleId :  
 CL-56-05-02-22-A



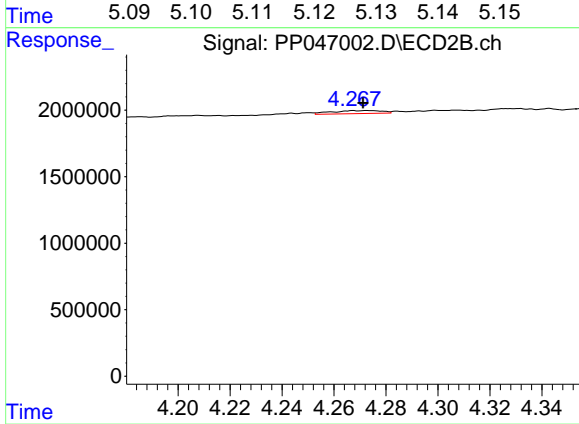
#3 AR-1016-1

R.T.: 4.250 min  
 Delta R.T.: -0.003 min  
 Response: 47243  
 Conc: 0.41 ng/ml



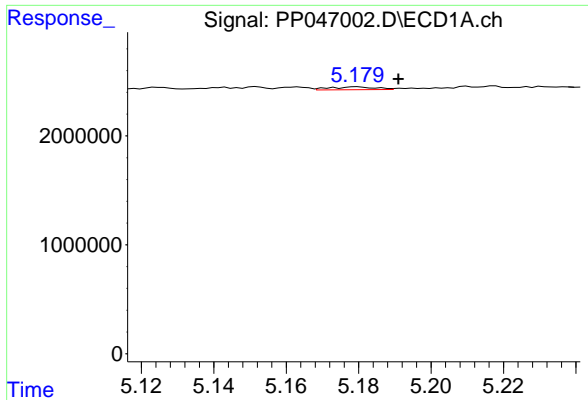
#4 AR-1016-2

R.T.: 5.124 min  
 Delta R.T.: -0.001 min  
 Response: 178927  
 Conc: 1.57 ng/ml



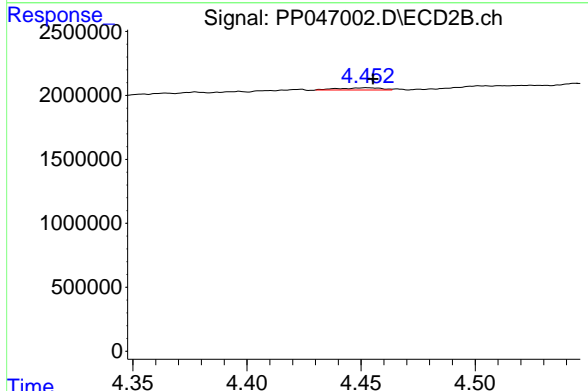
#4 AR-1016-2

R.T.: 4.267 min  
 Delta R.T.: -0.004 min  
 Response: 306011  
 Conc: 1.80 ng/ml

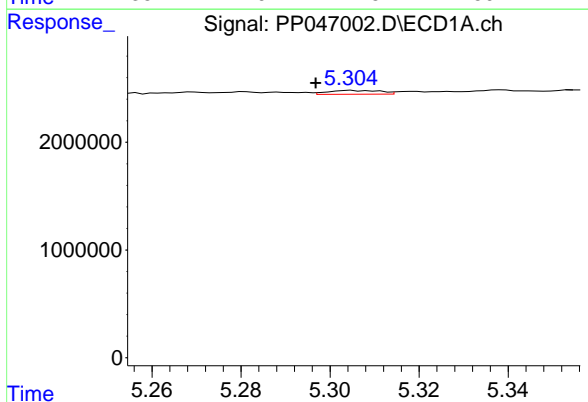


#5 AR-1016-3  
 R.T.: 5.180 min  
 Delta R.T.: -0.011 min  
 Response: 228818  
 Conc: 3.20 ng/ml

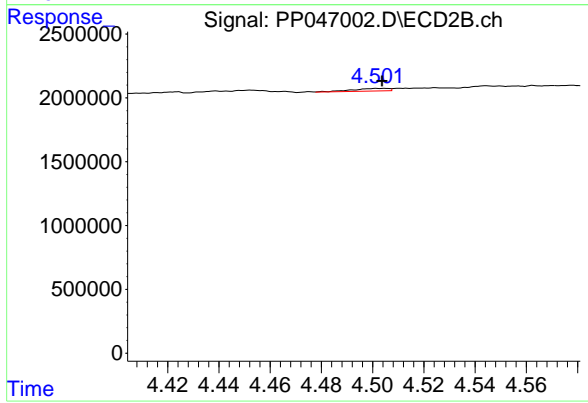
Instrument :  
 ECD\_P  
 ClientSampleId :  
 CL-56-05-02-22-A



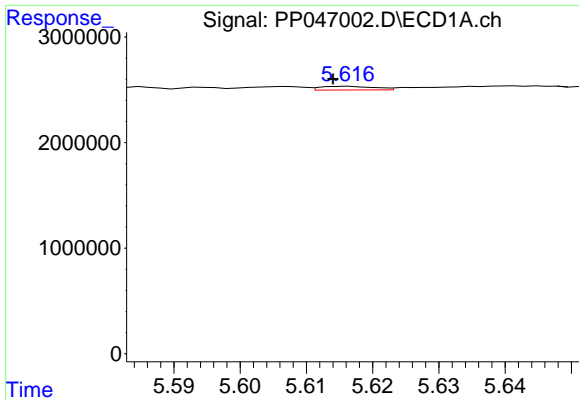
#5 AR-1016-3  
 R.T.: 4.452 min  
 Delta R.T.: -0.003 min  
 Response: 228442  
 Conc: 2.61 ng/ml



#6 AR-1016-4  
 R.T.: 5.305 min  
 Delta R.T.: 0.008 min  
 Response: 294755  
 Conc: 4.90 ng/ml



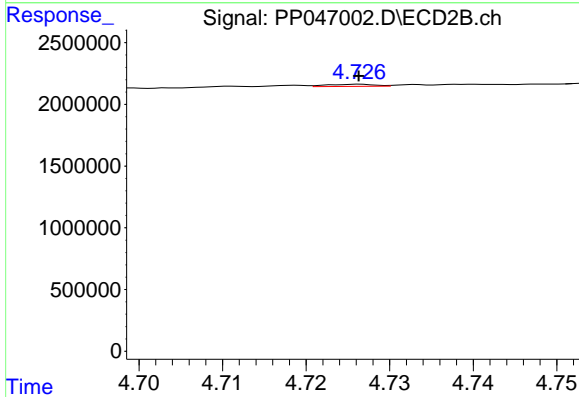
#6 AR-1016-4  
 R.T.: 4.502 min  
 Delta R.T.: -0.002 min  
 Response: 203766  
 Conc: 2.93 ng/ml



#7 AR-1016-5

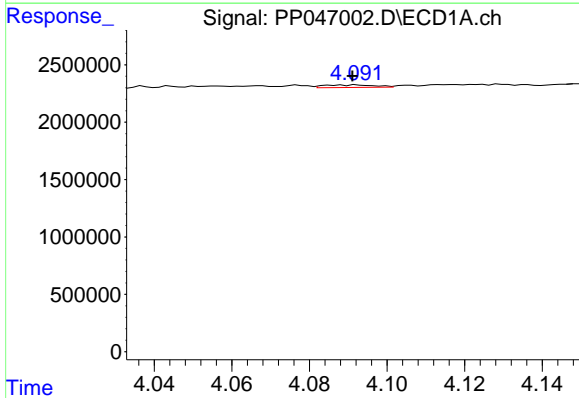
R.T.: 5.616 min  
 Delta R.T.: 0.002 min  
 Response: 199918  
 Conc: 3.78 ng/ml

Instrument : ECD\_P  
 ClientSampleId : CL-56-05-02-22-A



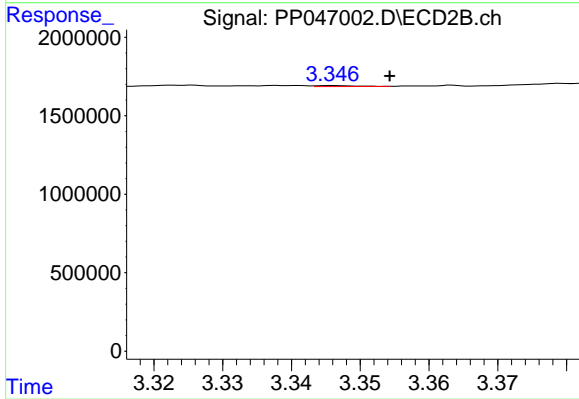
#7 AR-1016-5

R.T.: 4.726 min  
 Delta R.T.: 0.000 min  
 Response: 71433  
 Conc: 0.84 ng/ml



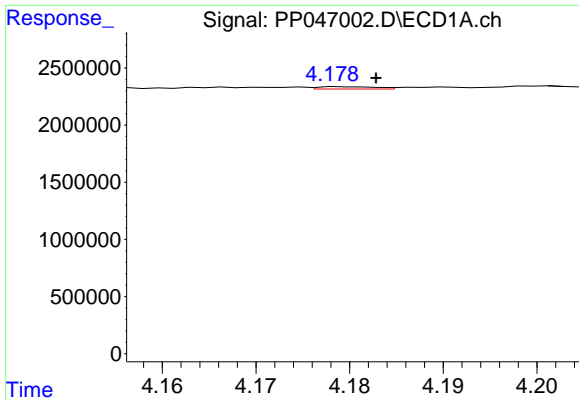
#8 AR-1221-1

R.T.: 4.092 min  
 Delta R.T.: 0.001 min  
 Response: 199278  
 Conc: 7.23 ng/ml



#8 AR-1221-1

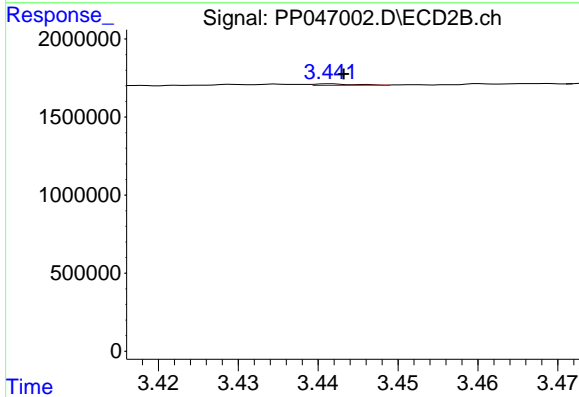
R.T.: 3.346 min  
 Delta R.T.: -0.008 min  
 Response: 23650  
 Conc: 0.54 ng/ml



#9 AR-1221-2

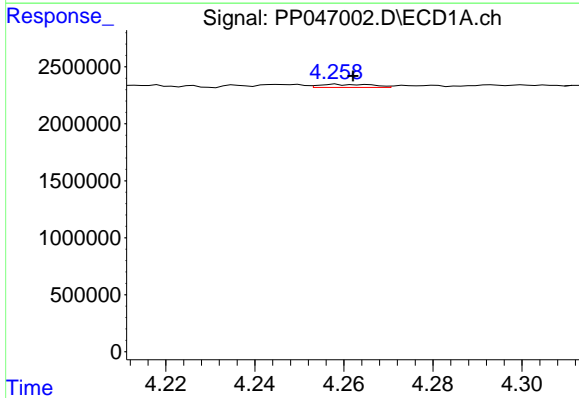
R.T.: 4.179 min  
 Delta R.T.: -0.004 min  
 Response: 85228  
 Conc: 4.20 ng/ml

Instrument :  
 ECD\_P  
 ClientSampleId :  
 CL-56-05-02-22-A



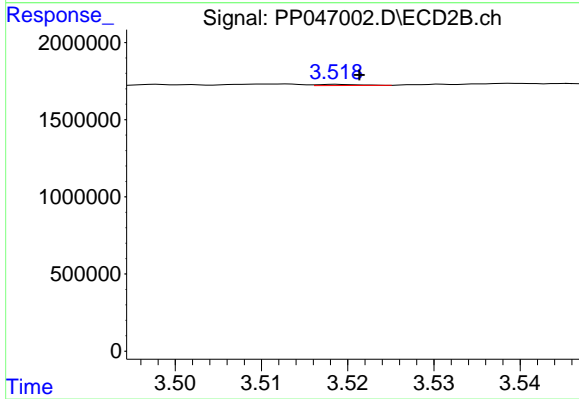
#9 AR-1221-2

R.T.: 3.442 min  
 Delta R.T.: -0.002 min  
 Response: 32979  
 Conc: 0.98 ng/ml



#10 AR-1221-3

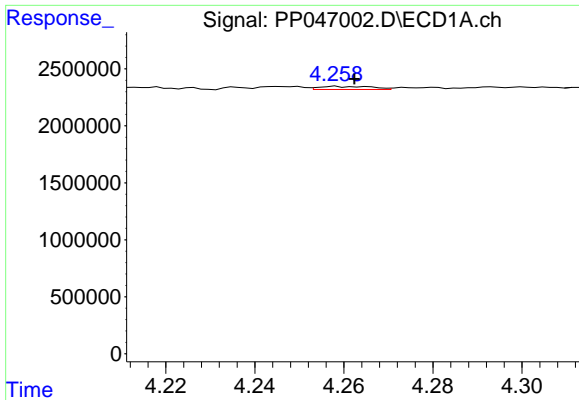
R.T.: 4.258 min  
 Delta R.T.: -0.004 min  
 Response: 223352  
 Conc: 3.43 ng/ml



#10 AR-1221-3

R.T.: 3.519 min  
 Delta R.T.: -0.003 min  
 Response: 24687  
 Conc: 0.25 ng/ml

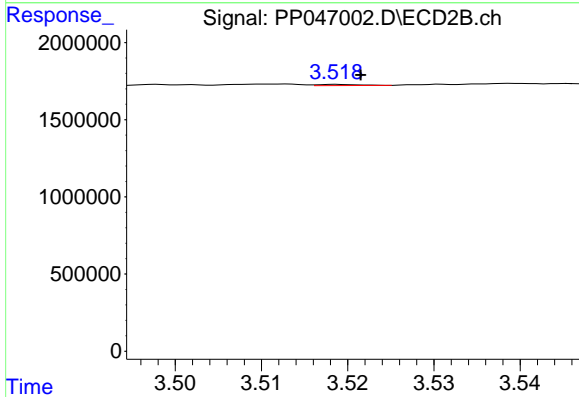




#11 AR-1232-1

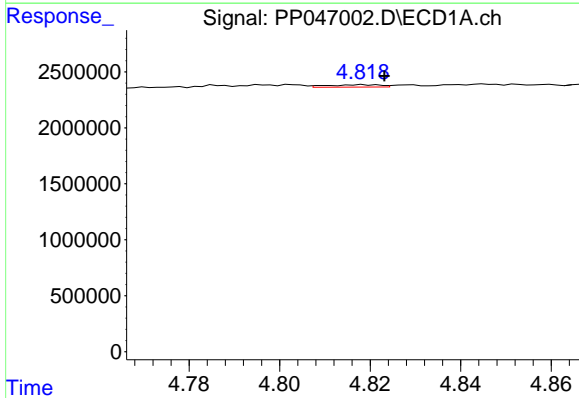
R.T.: 4.258 min  
 Delta R.T.: -0.004 min  
 Response: 223352  
 Conc: 4.56 ng/ml

Instrument :  
 ECD\_P  
 ClientSampleId :  
 CL-56-05-02-22-A



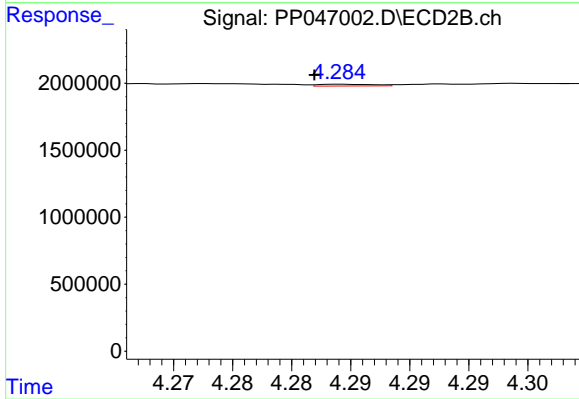
#11 AR-1232-1

R.T.: 3.519 min  
 Delta R.T.: -0.003 min  
 Response: 24687  
 Conc: 0.33 ng/ml



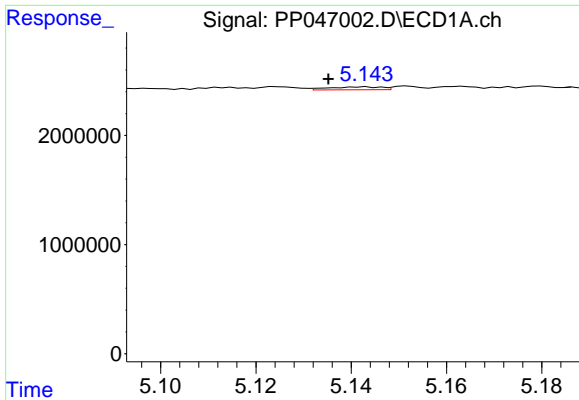
#12 AR-1232-2

R.T.: 4.818 min  
 Delta R.T.: -0.005 min  
 Response: 170249  
 Conc: 7.01 ng/ml



#12 AR-1232-2

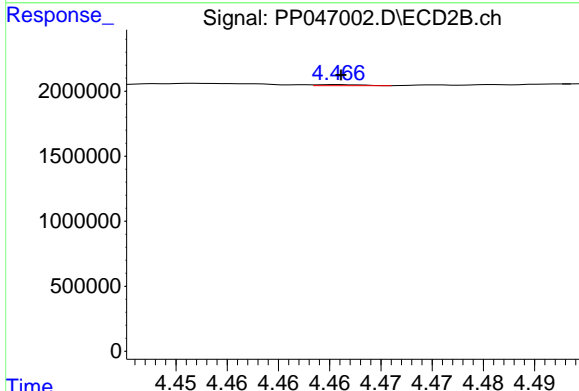
R.T.: 4.284 min  
 Delta R.T.: 0.002 min  
 Response: 42326  
 Conc: 0.59 ng/ml



#13 AR-1232-3

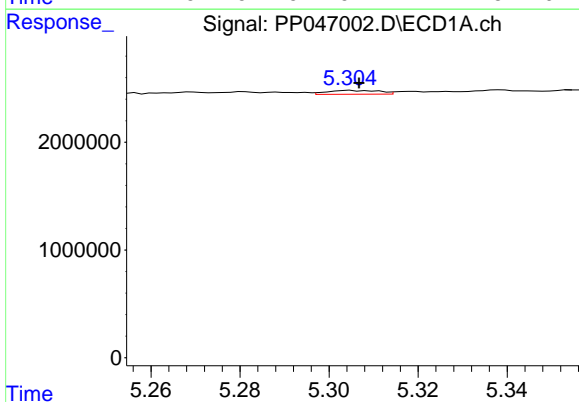
R.T.: 5.143 min  
 Delta R.T.: 0.008 min  
 Response: 206638  
 Conc: 4.37 ng/ml

Instrument : ECD\_P  
 ClientSampleId : CL-56-05-02-22-A



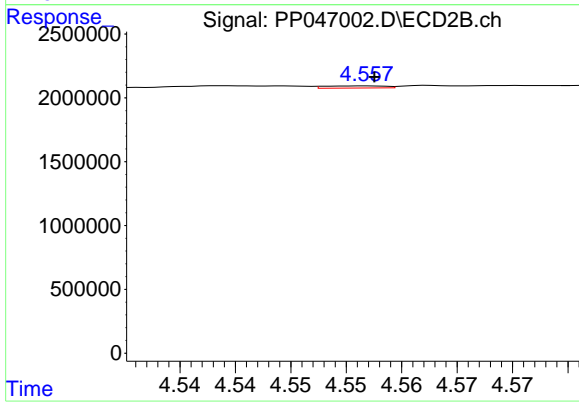
#13 AR-1232-3

R.T.: 4.466 min  
 Delta R.T.: 0.000 min  
 Response: 26500  
 Conc: 0.73 ng/ml



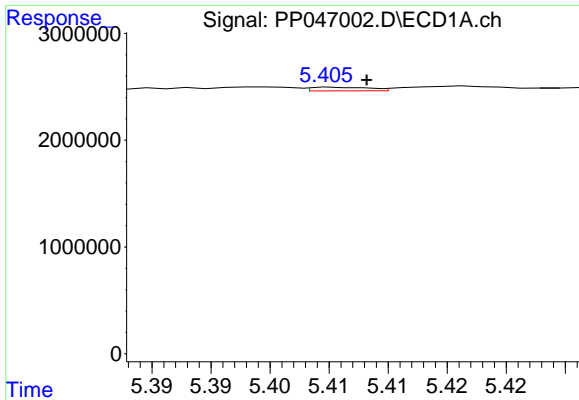
#14 AR-1232-4

R.T.: 5.305 min  
 Delta R.T.: -0.002 min  
 Response: 294755  
 Conc: 12.11 ng/ml



#14 AR-1232-4

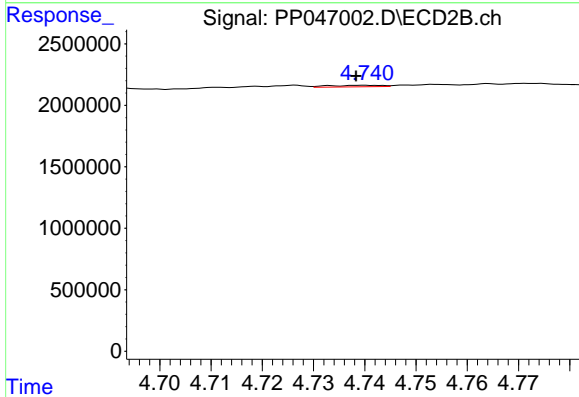
R.T.: 4.557 min  
 Delta R.T.: 0.000 min  
 Response: 64144  
 Conc: 2.01 ng/ml



#15 AR-1232-5

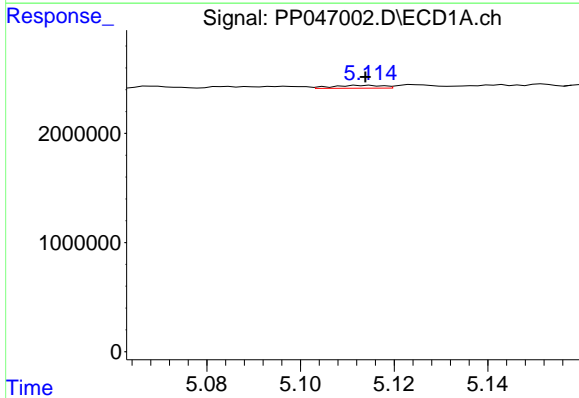
R.T.: 5.406 min  
 Delta R.T.: -0.002 min  
 Response: 120767  
 Conc: 7.26 ng/ml

Instrument :  
 ECD\_P  
 ClientSampleId :  
 CL-56-05-02-22-A



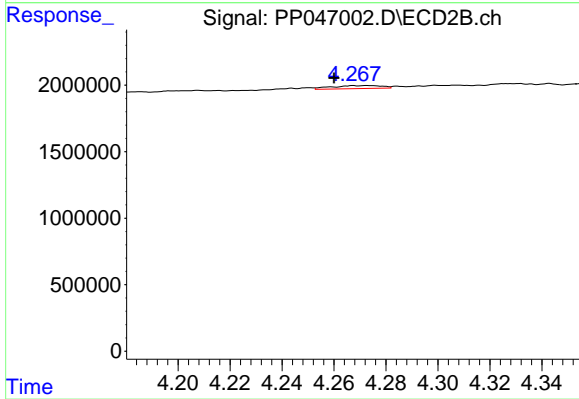
#15 AR-1232-5

R.T.: 4.740 min  
 Delta R.T.: 0.002 min  
 Response: 89998  
 Conc: 3.12 ng/ml



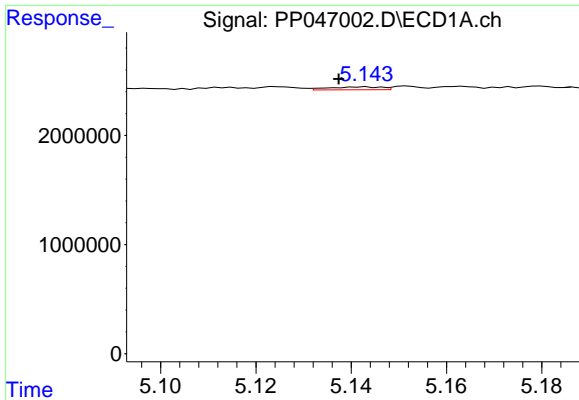
#16 AR-1242-1

R.T.: 5.112 min  
 Delta R.T.: -0.002 min  
 Response: 200651  
 Conc: 3.16 ng/ml



#16 AR-1242-1

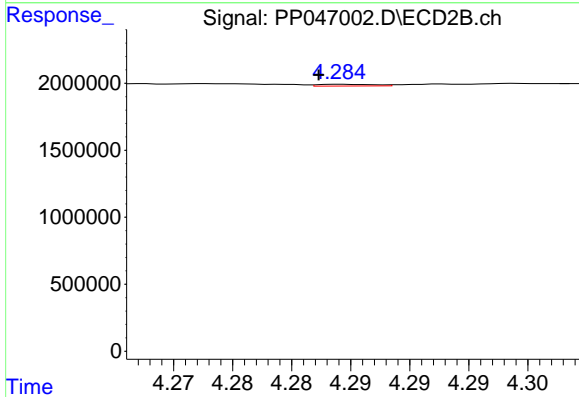
R.T.: 4.267 min  
 Delta R.T.: 0.007 min  
 Response: 306011  
 Conc: 3.10 ng/ml



#17 AR-1242-2

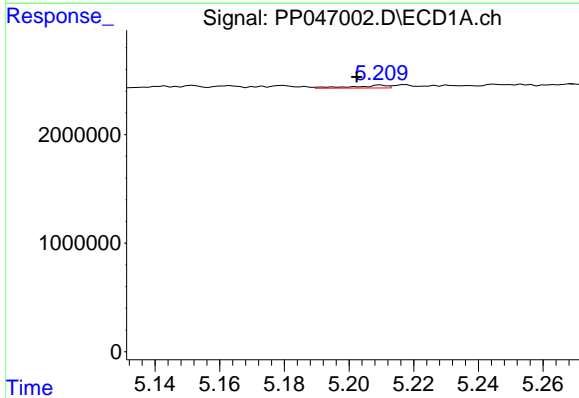
R.T.: 5.143 min  
 Delta R.T.: 0.006 min  
 Response: 206638  
 Conc: 2.17 ng/ml

Instrument :  
 ECD\_P  
 ClientSampleId :  
 CL-56-05-02-22-A



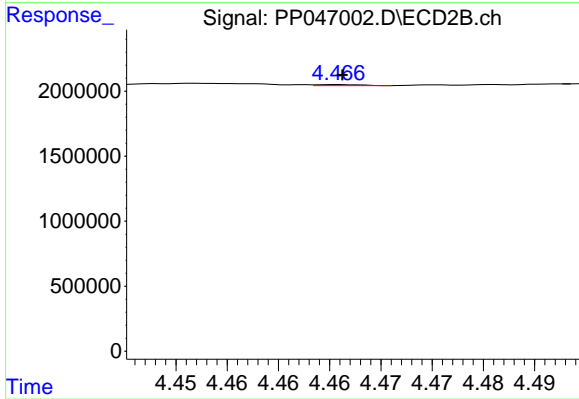
#17 AR-1242-2

R.T.: 4.284 min  
 Delta R.T.: 0.002 min  
 Response: 42326  
 Conc: 0.29 ng/ml



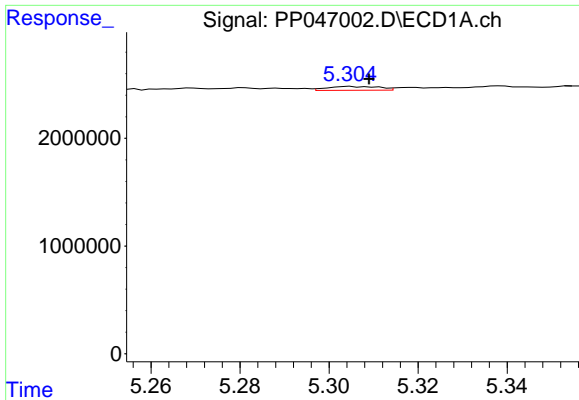
#18 AR-1242-3

R.T.: 5.210 min  
 Delta R.T.: 0.007 min  
 Response: 187282  
 Conc: 3.13 ng/ml



#18 AR-1242-3

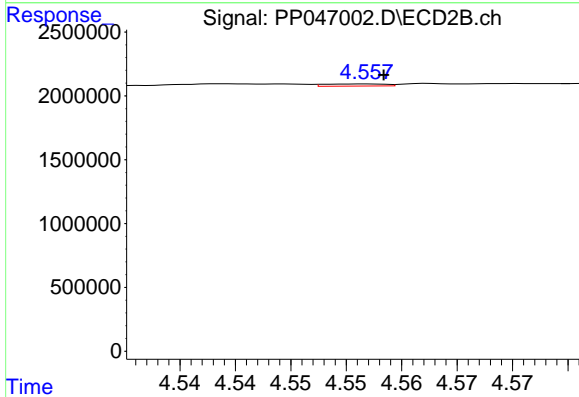
R.T.: 4.466 min  
 Delta R.T.: 0.000 min  
 Response: 26500  
 Conc: 0.36 ng/ml



#19 AR-1242-4

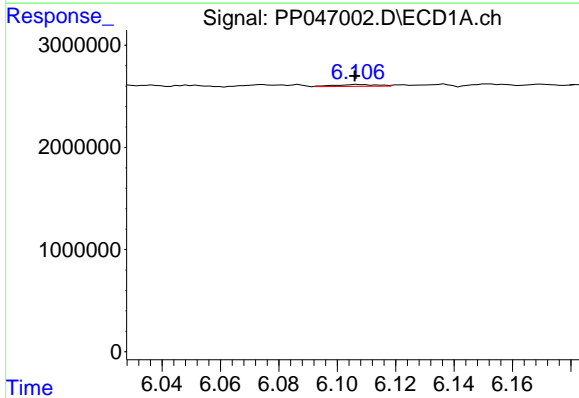
R.T.: 5.305 min  
 Delta R.T.: -0.004 min  
 Response: 294755  
 Conc: 5.83 ng/ml

Instrument :  
 ECD\_P  
 ClientSampleId :  
 CL-56-05-02-22-A



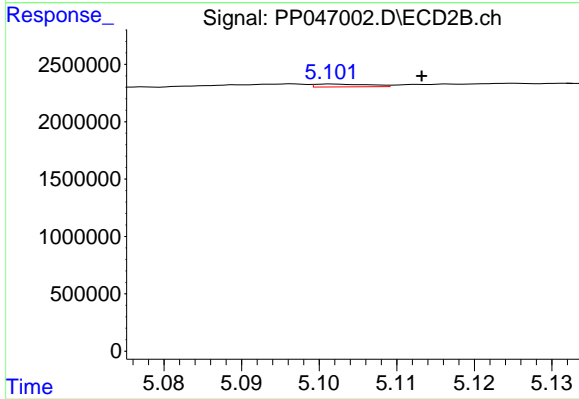
#19 AR-1242-4

R.T.: 4.557 min  
 Delta R.T.: -0.002 min  
 Response: 64144  
 Conc: 0.90 ng/ml



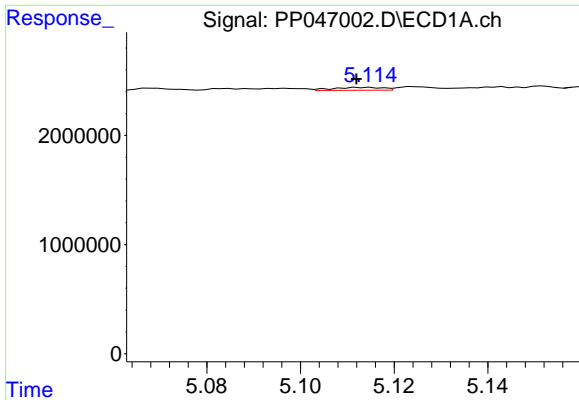
#20 AR-1242-5

R.T.: 6.107 min  
 Delta R.T.: 0.001 min  
 Response: 183139  
 Conc: 3.63 ng/ml



#20 AR-1242-5

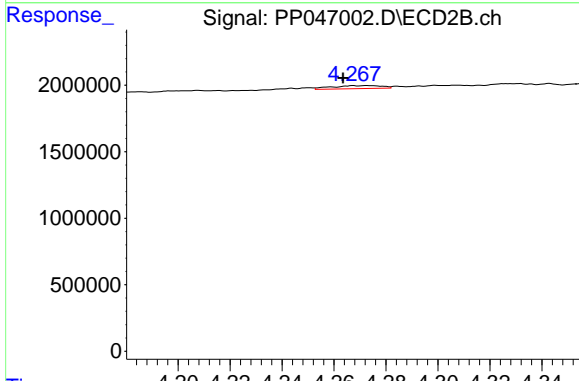
R.T.: 5.102 min  
 Delta R.T.: -0.012 min  
 Response: 123364  
 Conc: 1.28 ng/ml



#21 AR-1248-1

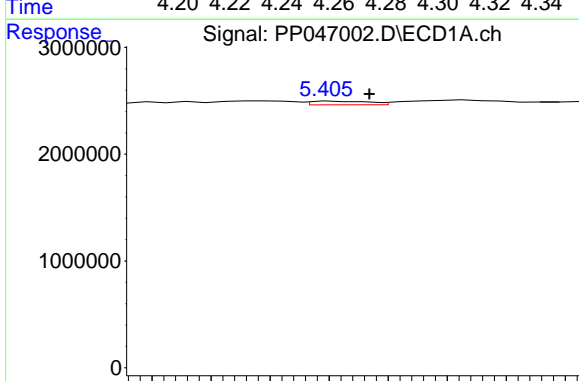
R.T.: 5.112 min  
 Delta R.T.: 0.000 min  
 Response: 200651  
 Conc: 4.80 ng/ml

Instrument :  
 ECD\_P  
 ClientSampleId :  
 CL-56-05-02-22-A



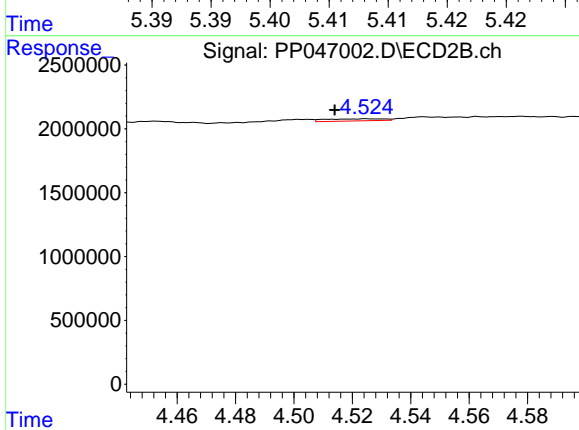
#21 AR-1248-1

R.T.: 4.267 min  
 Delta R.T.: 0.004 min  
 Response: 306011  
 Conc: 4.45 ng/ml



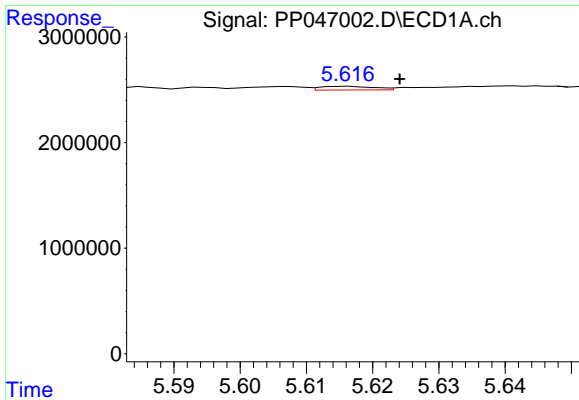
#22 AR-1248-2

R.T.: 5.406 min  
 Delta R.T.: -0.003 min  
 Response: 120767  
 Conc: 2.04 ng/ml



#22 AR-1248-2

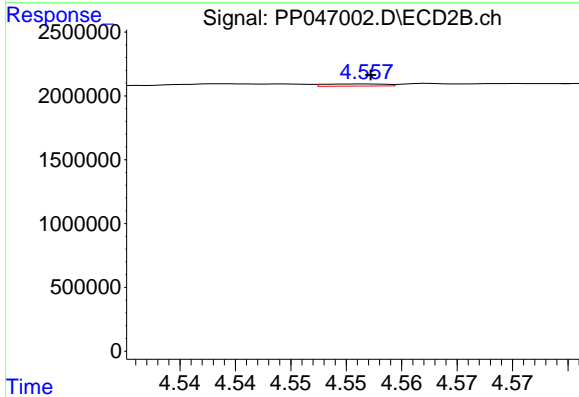
R.T.: 4.525 min  
 Delta R.T.: 0.011 min  
 Response: 227699  
 Conc: 2.44 ng/ml



#23 AR-1248-3

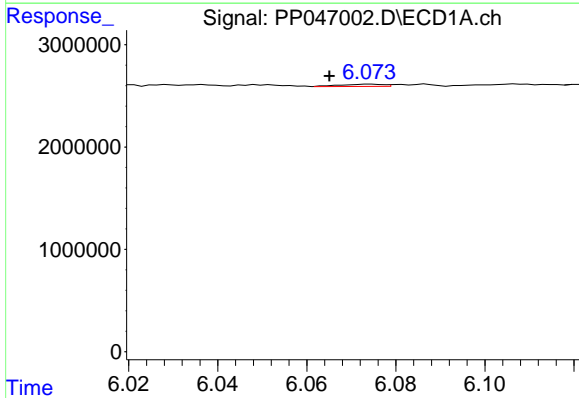
R.T.: 5.616 min  
 Delta R.T.: -0.008 min  
 Response: 199918  
 Conc: 2.86 ng/ml

Instrument :  
 ECD\_P  
 ClientSampleId :  
 CL-56-05-02-22-A



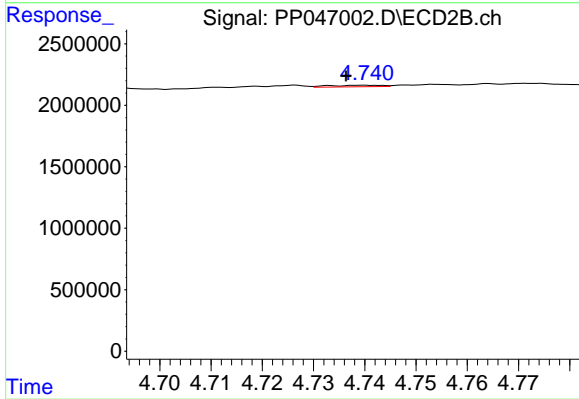
#23 AR-1248-3

R.T.: 4.557 min  
 Delta R.T.: 0.000 min  
 Response: 64144  
 Conc: 0.66 ng/ml



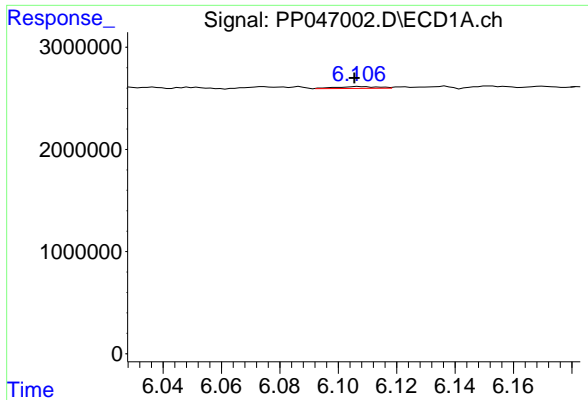
#24 AR-1248-4

R.T.: 6.074 min  
 Delta R.T.: 0.009 min  
 Response: 147662  
 Conc: 1.93 ng/ml



#24 AR-1248-4

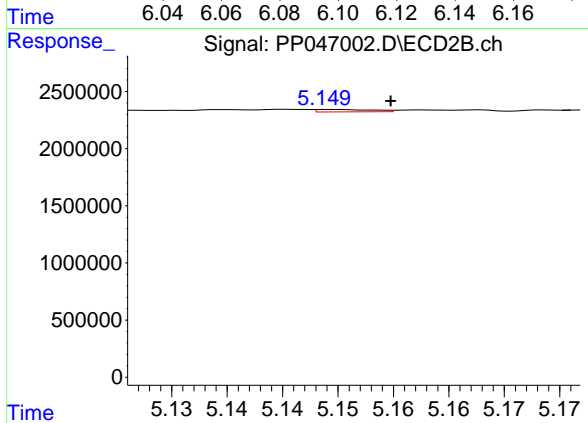
R.T.: 4.740 min  
 Delta R.T.: 0.004 min  
 Response: 89998  
 Conc: 0.76 ng/ml



#25 AR-1248-5

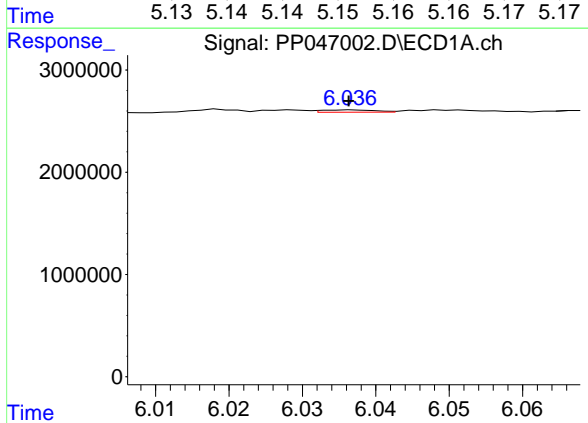
R.T.: 6.107 min  
 Delta R.T.: 0.002 min  
 Response: 183139  
 Conc: 2.35 ng/ml

Instrument :  
 ECD\_P  
 ClientSampleId :  
 CL-56-05-02-22-A



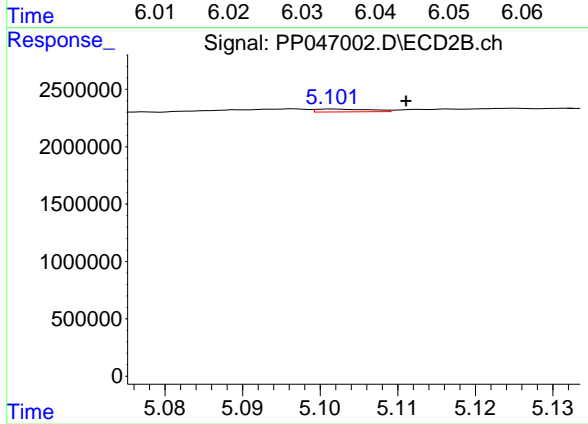
#25 AR-1248-5

R.T.: 5.149 min  
 Delta R.T.: -0.006 min  
 Response: 72137  
 Conc: 0.59 ng/ml



#26 AR-1254-1

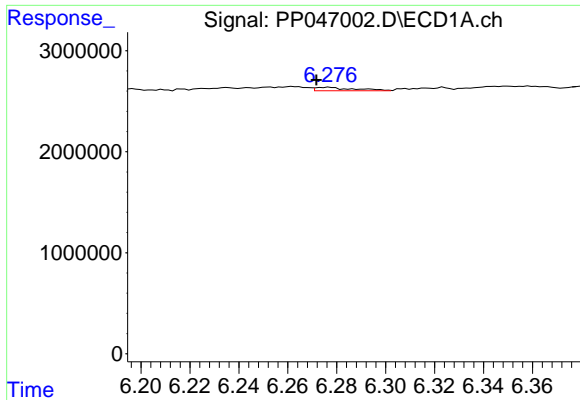
R.T.: 6.037 min  
 Delta R.T.: 0.000 min  
 Response: 117650  
 Conc: 2.03 ng/ml



#26 AR-1254-1

R.T.: 5.102 min  
 Delta R.T.: -0.009 min  
 Response: 123364  
 Conc: 0.64 ng/ml

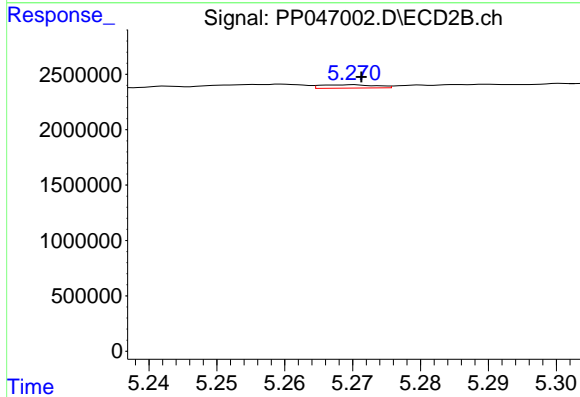




#27 AR-1254-2

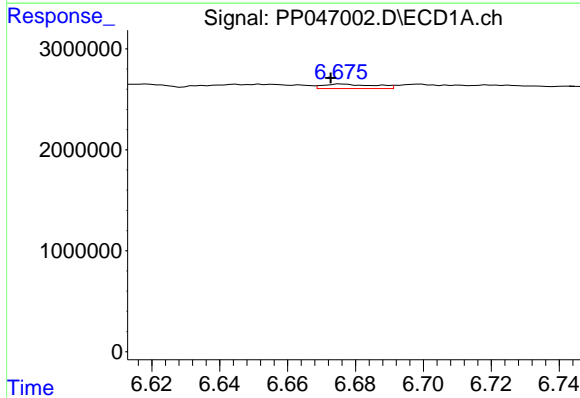
R.T.: 6.277 min  
 Delta R.T.: 0.005 min  
 Response: 369683  
 Conc: 3.00 ng/ml

Instrument :  
 ECD\_P  
 ClientSampleId :  
 CL-56-05-02-22-A



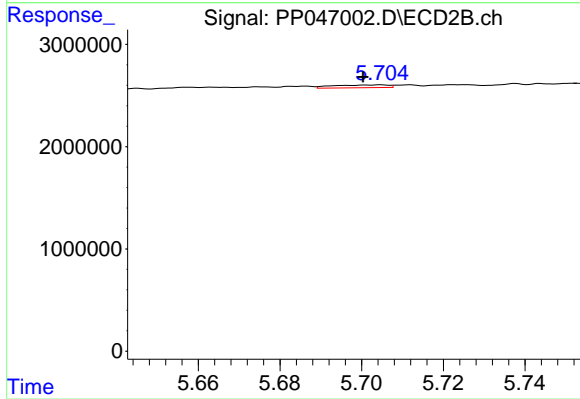
#27 AR-1254-2

R.T.: 5.270 min  
 Delta R.T.: -0.001 min  
 Response: 172358  
 Conc: 1.04 ng/ml



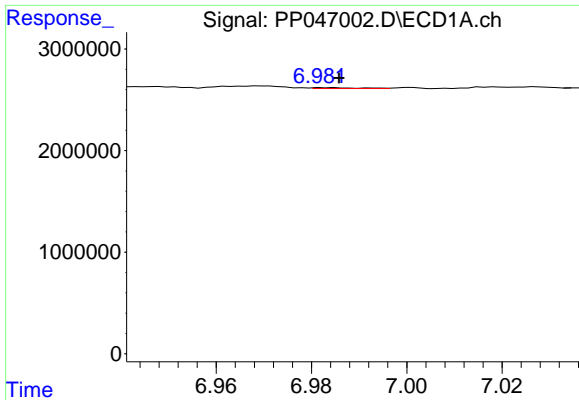
#28 AR-1254-3

R.T.: 6.676 min  
 Delta R.T.: 0.003 min  
 Response: 460220  
 Conc: 3.48 ng/ml



#28 AR-1254-3

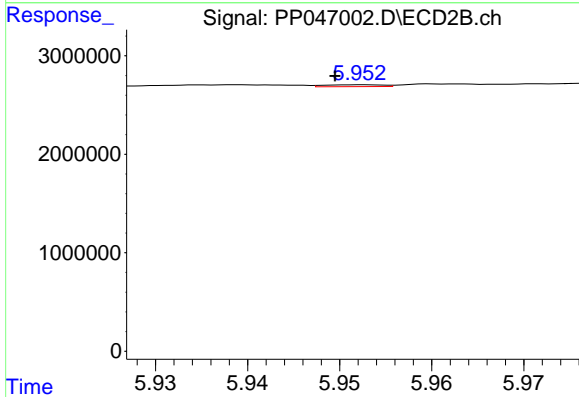
R.T.: 5.705 min  
 Delta R.T.: 0.004 min  
 Response: 260485  
 Conc: 1.04 ng/ml



#29 AR-1254-4

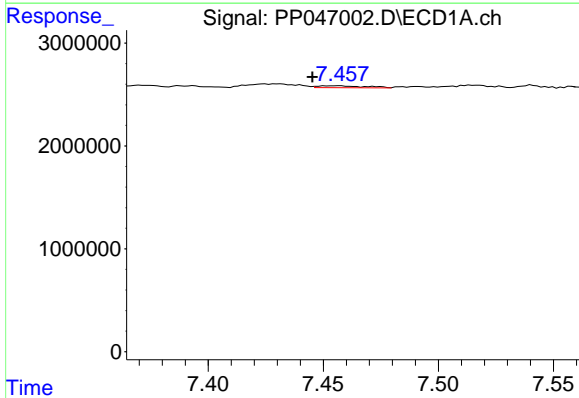
R.T.: 6.983 min  
 Delta R.T.: -0.003 min  
 Response: 61024  
 Conc: 0.61 ng/ml

Instrument :  
 ECD\_P  
 ClientSampleId :  
 CL-56-05-02-22-A



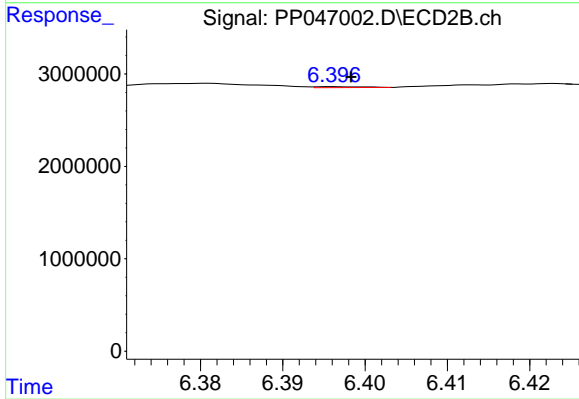
#29 AR-1254-4

R.T.: 5.953 min  
 Delta R.T.: 0.003 min  
 Response: 82910  
 Conc: 0.48 ng/ml



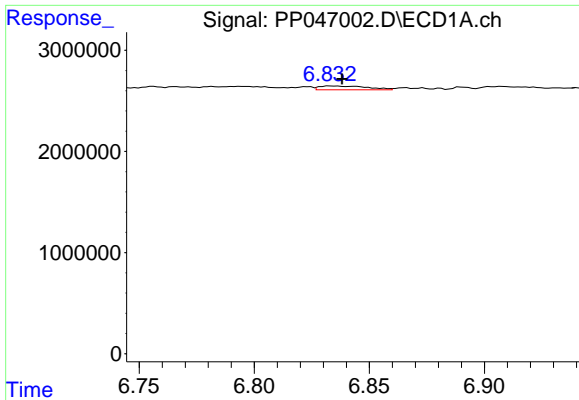
#30 AR-1254-5

R.T.: 7.457 min  
 Delta R.T.: 0.012 min  
 Response: 276372  
 Conc: 3.14 ng/ml



#30 AR-1254-5

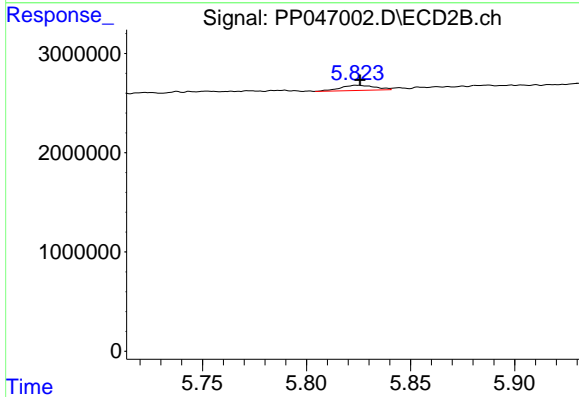
R.T.: 6.396 min  
 Delta R.T.: -0.002 min  
 Response: 42186  
 Conc: 0.19 ng/ml



#31 AR-1260-1

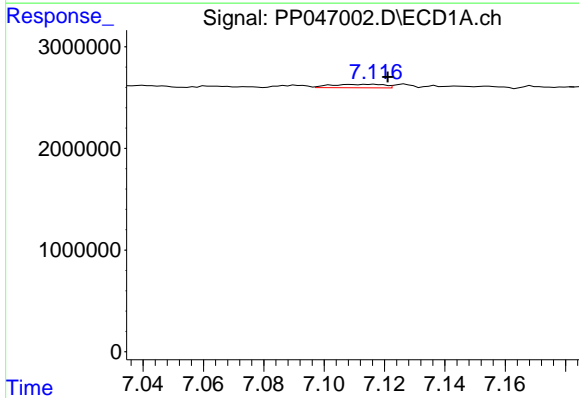
R.T.: 6.833 min  
 Delta R.T.: -0.005 min  
 Response: 562960  
 Conc: 6.67 ng/ml

Instrument :  
 ECD\_P  
 ClientSampleId :  
 CL-56-05-02-22-A



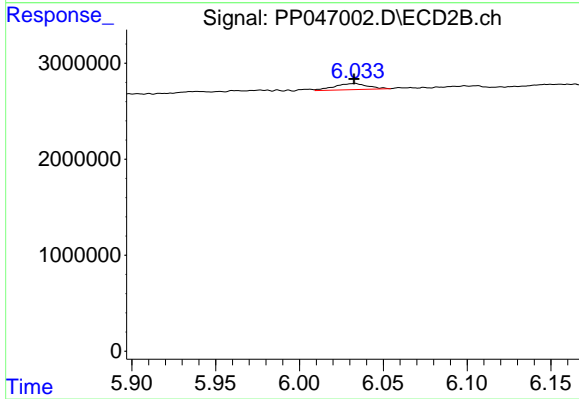
#31 AR-1260-1

R.T.: 5.824 min  
 Delta R.T.: -0.002 min  
 Response: 593195  
 Conc: 3.73 ng/ml



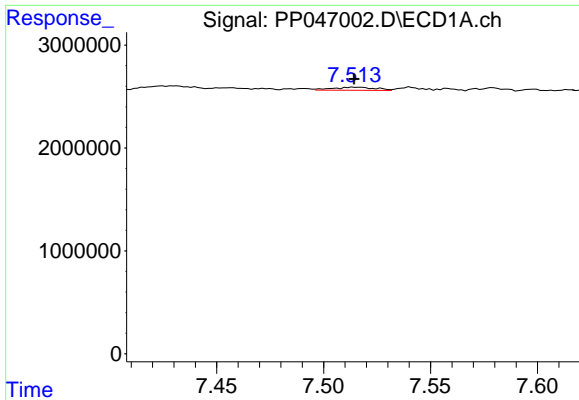
#32 AR-1260-2

R.T.: 7.116 min  
 Delta R.T.: -0.005 min  
 Response: 418589  
 Conc: 4.16 ng/ml



#32 AR-1260-2

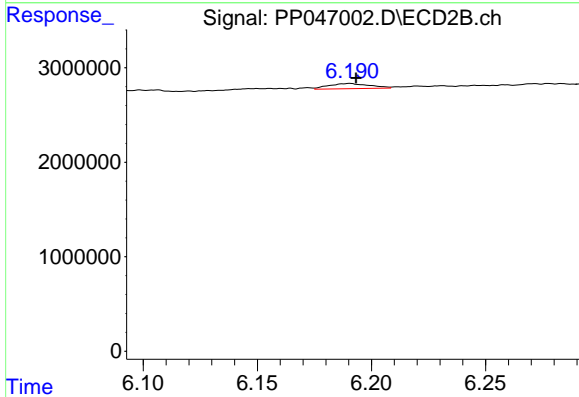
R.T.: 6.033 min  
 Delta R.T.: 0.000 min  
 Response: 890333  
 Conc: 4.38 ng/ml



#33 AR-1260-3

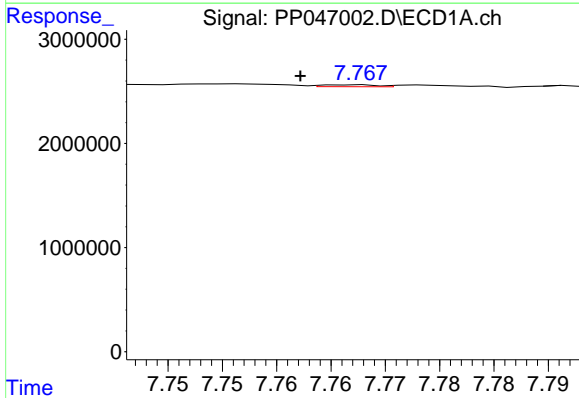
R.T.: 7.515 min  
 Delta R.T.: 0.000 min  
 Response: 410191  
 Conc: 5.06 ng/ml

Instrument :  
 ECD\_P  
 ClientSampleId :  
 CL-56-05-02-22-A



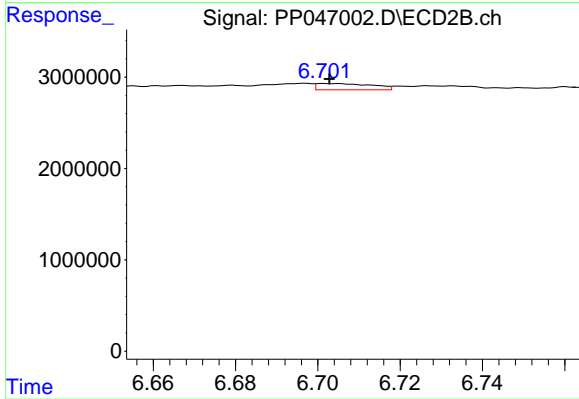
#33 AR-1260-3

R.T.: 6.191 min  
 Delta R.T.: -0.002 min  
 Response: 690424  
 Conc: 4.04 ng/ml



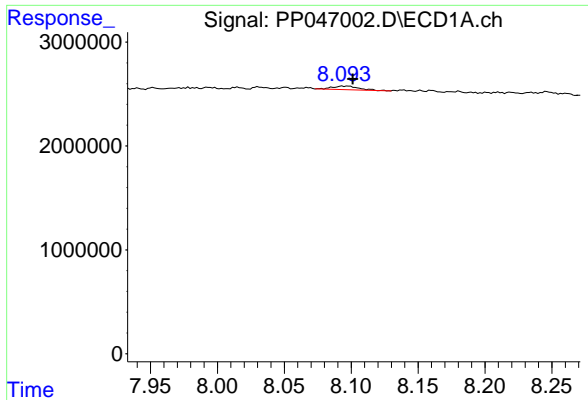
#34 AR-1260-4

R.T.: 7.767 min  
 Delta R.T.: 0.005 min  
 Response: 64863  
 Conc: 0.81 ng/ml



#34 AR-1260-4

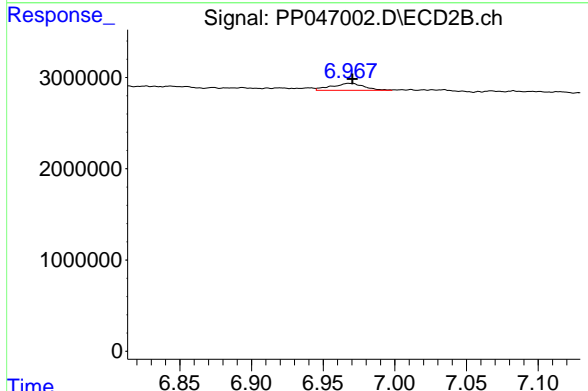
R.T.: 6.701 min  
 Delta R.T.: -0.001 min  
 Response: 634567  
 Conc: 4.37 ng/ml



#35 AR-1260-5

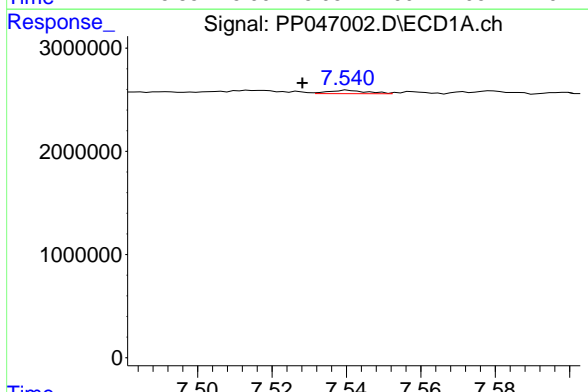
R.T.: 8.094 min  
 Delta R.T.: -0.008 min  
 Response: 470970  
 Conc: 2.96 ng/ml

Instrument : ECD\_P  
 ClientSampleId : CL-56-05-02-22-A



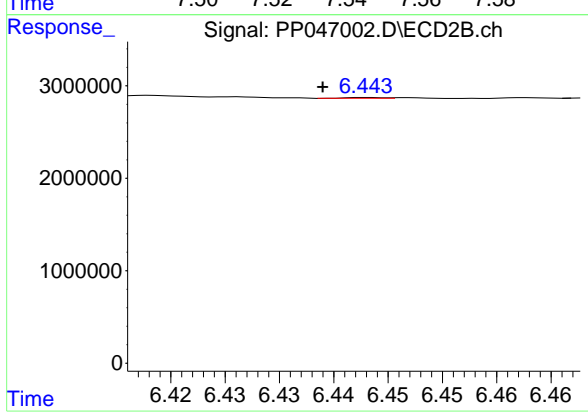
#35 AR-1260-5

R.T.: 6.968 min  
 Delta R.T.: -0.003 min  
 Response: 1194380  
 Conc: 3.40 ng/ml



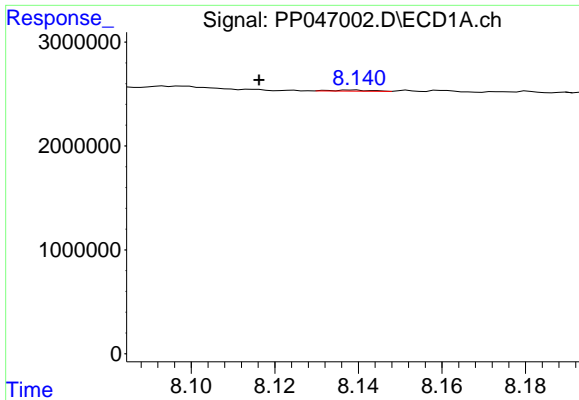
#36 AR-1262-1

R.T.: 7.540 min  
 Delta R.T.: 0.012 min  
 Response: 234719  
 Conc: 1.94 ng/ml



#36 AR-1262-1

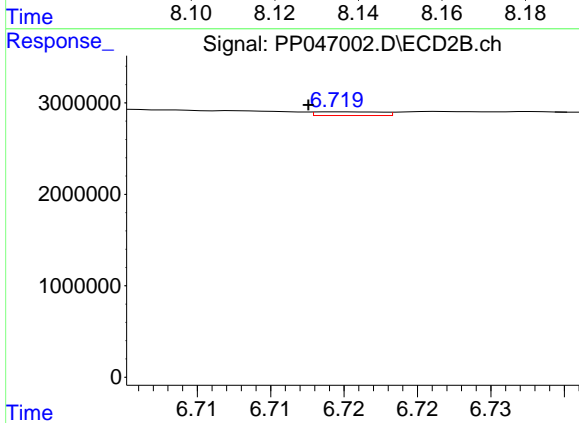
R.T.: 6.443 min  
 Delta R.T.: 0.004 min  
 Response: 20420  
 Conc: 0.08 ng/ml



#37 AR-1262-2

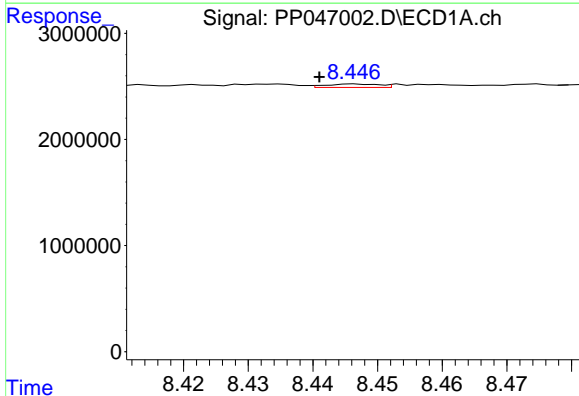
R.T.: 8.139 min  
 Delta R.T.: 0.022 min  
 Response: 66482  
 Conc: 0.35 ng/ml

Instrument :  
 ECD\_P  
 ClientSampleId :  
 CL-56-05-02-22-A



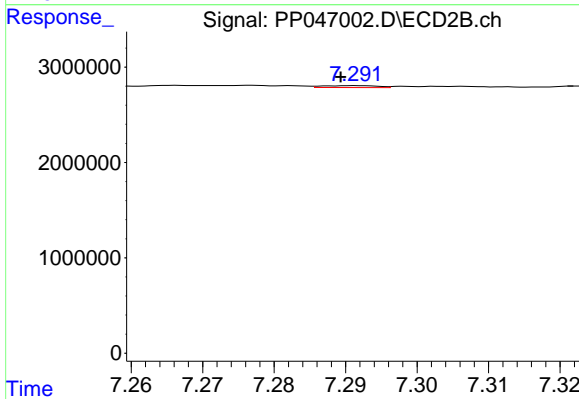
#37 AR-1262-2

R.T.: 6.720 min  
 Delta R.T.: 0.002 min  
 Response: 124660  
 Conc: 0.64 ng/ml



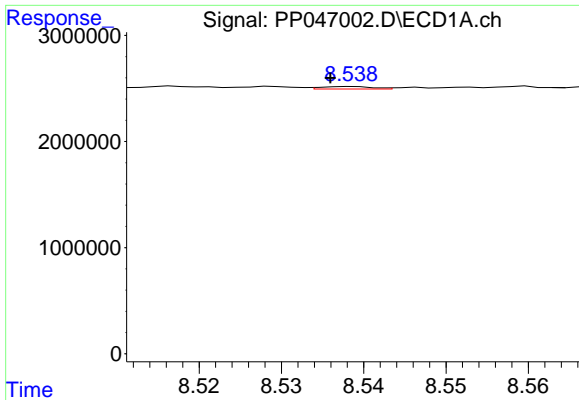
#38 AR-1262-3

R.T.: 8.447 min  
 Delta R.T.: 0.006 min  
 Response: 185476  
 Conc: 1.38 ng/ml



#38 AR-1262-3

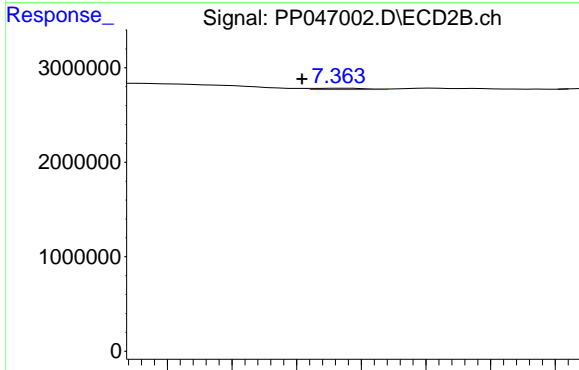
R.T.: 7.292 min  
 Delta R.T.: 0.003 min  
 Response: 106571  
 Conc: 0.66 ng/ml



#39 AR-1262-4

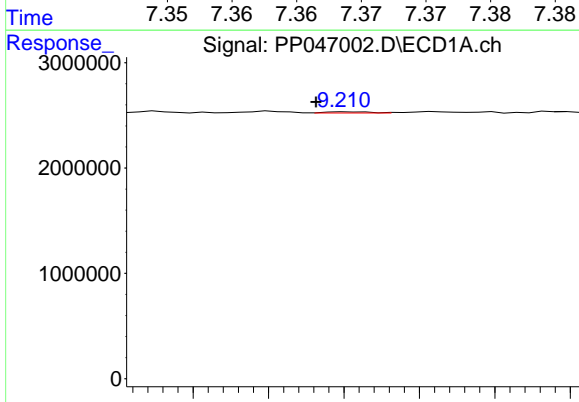
R.T.: 8.539 min  
 Delta R.T.: 0.003 min  
 Response: 98807  
 Conc: 1.57 ng/ml

Instrument :  
 ECD\_P  
 ClientSampleId :  
 CL-56-05-02-22-A



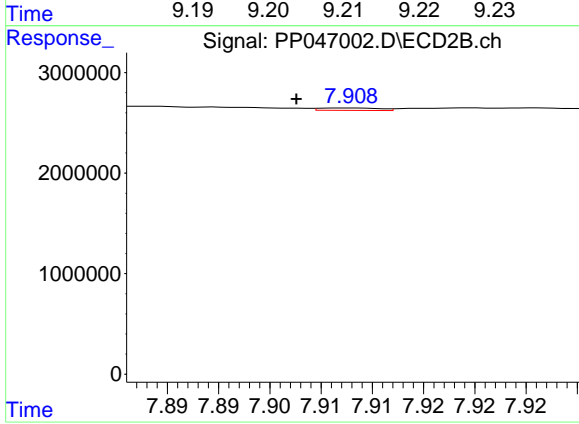
#39 AR-1262-4

R.T.: 7.363 min  
 Delta R.T.: 0.003 min  
 Response: 40032  
 Conc: 0.14 ng/ml



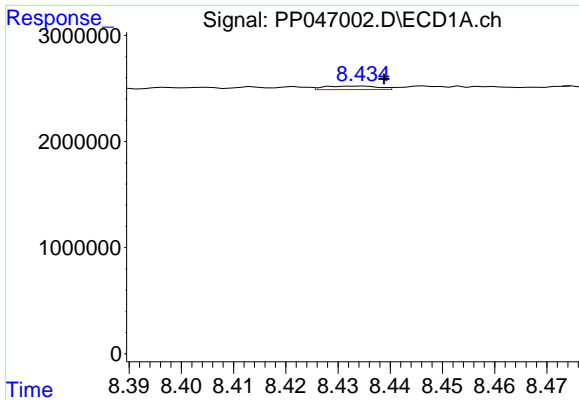
#40 AR-1262-5

R.T.: 9.211 min  
 Delta R.T.: 0.005 min  
 Response: 47392  
 Conc: 0.69 ng/ml



#40 AR-1262-5

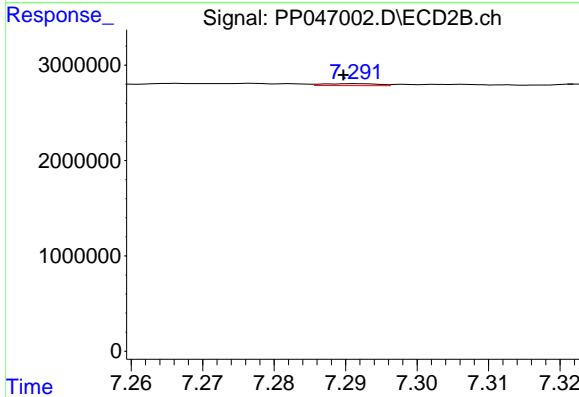
R.T.: 7.908 min  
 Delta R.T.: 0.005 min  
 Response: 97176  
 Conc: 0.74 ng/ml



#41 AR-1268-1

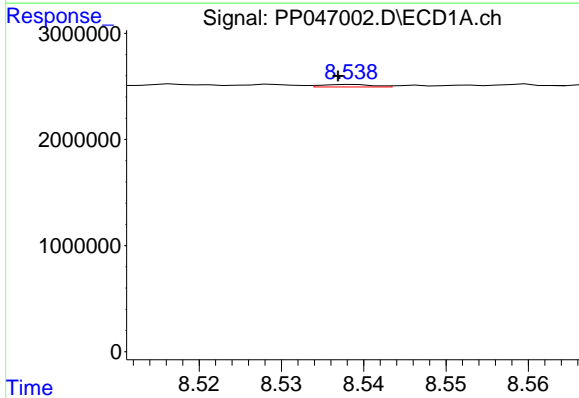
R.T.: 8.434 min  
 Delta R.T.: -0.005 min  
 Response: 236377  
 Conc: 0.98 ng/ml

Instrument :  
 ECD\_P  
 ClientSampleId :  
 CL-56-05-02-22-A



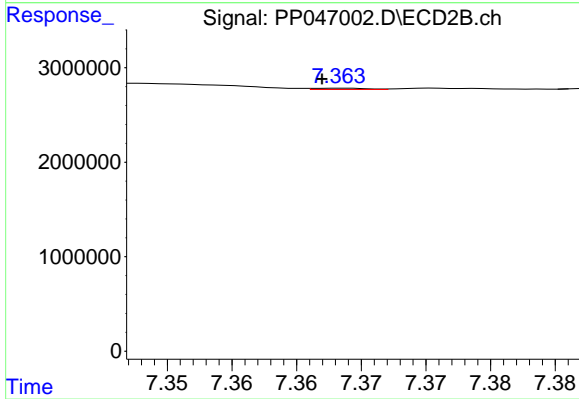
#41 AR-1268-1

R.T.: 7.292 min  
 Delta R.T.: 0.002 min  
 Response: 106571  
 Conc: 0.22 ng/ml



#42 AR-1268-2

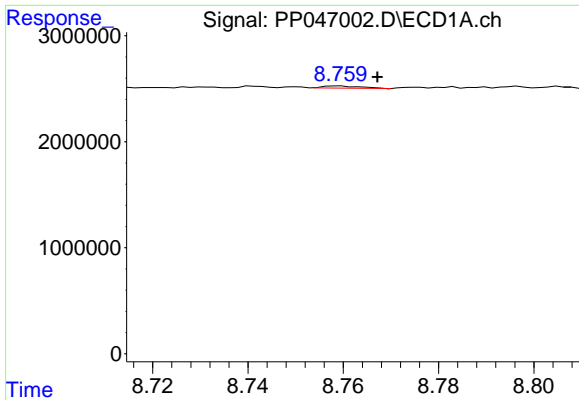
R.T.: 8.539 min  
 Delta R.T.: 0.002 min  
 Response: 98807  
 Conc: 0.45 ng/ml



#42 AR-1268-2

R.T.: 7.363 min  
 Delta R.T.: 0.001 min  
 Response: 40032  
 Conc: 0.09 ng/ml

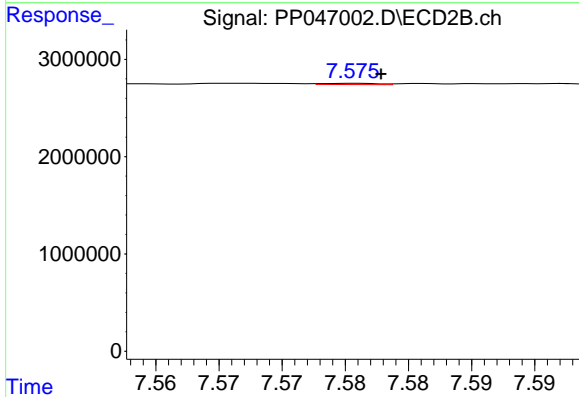




#43 AR-1268-3

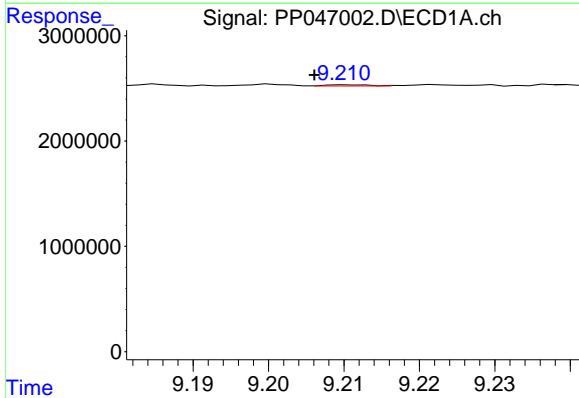
R.T.: 8.759 min  
 Delta R.T.: -0.008 min  
 Response: 115320  
 Conc: 0.60 ng/ml

Instrument :  
 ECD\_P  
 ClientSampleId :  
 CL-56-05-02-22-A



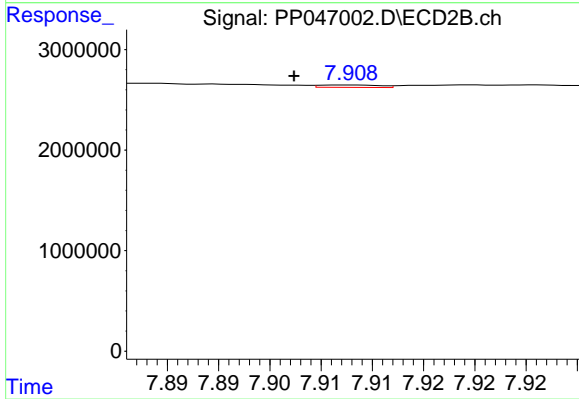
#43 AR-1268-3

R.T.: 7.576 min  
 Delta R.T.: -0.002 min  
 Response: 36305  
 Conc: 0.10 ng/ml



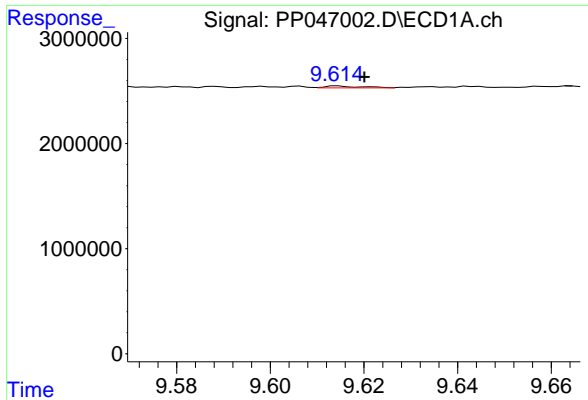
#44 AR-1268-4

R.T.: 9.211 min  
 Delta R.T.: 0.005 min  
 Response: 47392  
 Conc: 0.61 ng/ml



#44 AR-1268-4

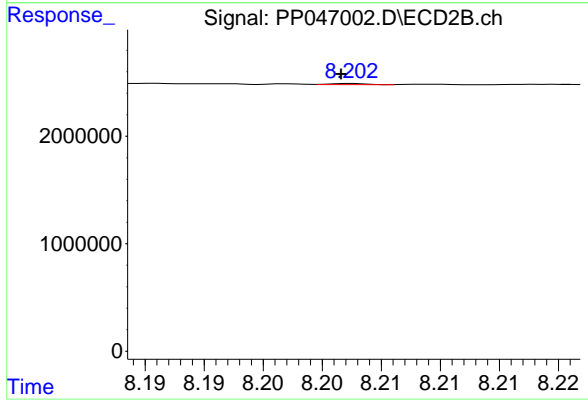
R.T.: 7.908 min  
 Delta R.T.: 0.005 min  
 Response: 97176  
 Conc: 0.66 ng/ml



#45 AR-1268-5

R.T.: 9.615 min  
 Delta R.T.: -0.006 min  
 Response: 101316  
 Conc: 0.18 ng/ml

Instrument :  
 ECD\_P  
 ClientSampleId :  
 CL-56-05-02-22-A



#45 AR-1268-5

R.T.: 8.203 min  
 Delta R.T.: 0.001 min  
 Response: 22108  
 Conc: 0.02 ng/ml