

Data Path : Z:\pestpcbsrv\HPCHEM1\ECD\_P\Data\PP050422\  
 Data File : PP047007.D  
 Signal(s) : Signal #1: ECD1A.ch Signal #2: ECD2B.ch  
 Acq On : 04 May 2022 21:56  
 Operator : YP\AJ  
 Sample : AR1242CCC500  
 Misc :  
 ALS Vial : 4 Sample Multiplier: 1

Instrument :  
 ECD\_P  
 ClientSampleId :  
 AR1242CCC500

Integration File signal 1: autoint1.e  
 Integration File signal 2: autoint2.e  
 Quant Time: May 05 05:29:58 2022  
 Quant Method : Z:\pestpcbsrv\HPCHEM1\ECD\_P\methods\PP042222.M  
 Quant Title : GC EXTRACTABLES  
 QLast Update : Tue May 03 11:45:42 2022  
 Response via : Initial Calibration  
 Integrator: ChemStation

Volume Inj. : 2 µl  
 Signal #1 Phase : ZB-MR1 Signal #2 Phase: ZB-MR2  
 Signal #1 Info : 30Mx0.32mmx 0.50µ Signal #2 Info : 30M x 0.32mm x 0.25µm

Compound	RT#1	RT#2	Resp#1	Resp#2	ng/ml	ng/ml
System Monitoring Compounds						
1) SA Tetrachlo...	3.857	3.124	133.5E6	190.8E6	55.297	58.156
2) SA Decachlor...	9.928f	8.434	78179204	126.6E6	53.129	53.095
Target Compounds						
3) L1 AR-1016-1	5.100	4.252	30694844	51436798	407.625	447.725
4) L1 AR-1016-2	5.123	4.270	45198590	75608315	396.927	445.630
5) L1 AR-1016-3	5.189	4.453	27189391	38537117	380.350	440.196
6) L1 AR-1016-4	5.294	4.502	22982904	29154407	382.272	418.764
7) L1 AR-1016-5	5.612	4.724	21184761	39507468	400.111	464.506
8) L2 AR-1221-1	4.081	3.345	3412889	5543186	123.752	125.534
9) L2 AR-1221-2	4.174	3.435	4318719	8238330	212.712	243.918
10) L2 AR-1221-3	4.252	3.512	17285690	28618942	265.172	288.098
11) L3 AR-1232-1	4.252	3.512	17285690	28618942	353.051	377.258
12) L3 AR-1232-2	4.811	4.270	23114231	75608315	952.226	1048.770
13) L3 AR-1232-3	5.123	4.453	45198590	38537117	956.952	1058.433
14) L3 AR-1232-4	5.294	4.545	22982904	37457686	944.546	1175.837
15) L3 AR-1232-5	5.395	4.724	16723132	39507468	1005.086	1371.492 #
16) L4 AR-1242-1	5.123	4.252	45198590	51436798	712.867	521.757 #
17) L4 AR-1242-2	5.123	4.270	45198590	75608315	474.424	522.006
18) L4 AR-1242-3	5.189	4.453	27189391	38537117	454.176	518.533
19) L4 AR-1242-4	5.294f	4.545	22982904	37457686	454.418	524.470
20) L4 AR-1242-5	6.091	5.098	21382237	51564248	424.328	534.397 #
21) L5 AR-1248-1	5.123	4.270	45198590	75608315	1081.433	1100.303
22) L5 AR-1248-2	5.395	4.502	16723132	29154407	282.946	311.838
23) L5 AR-1248-3	5.612	4.545	21184761	37457686	303.284	383.700 #
24) L5 AR-1248-4	6.050	4.724	20522206	39507468	267.630	335.612 #
25) L5 AR-1248-5	6.091	5.141	21382237	42836925	274.911	351.524 #
26) L6 AR-1254-1	6.050	5.098	20522206	51564248	353.309	267.223
27) L6 AR-1254-2	6.261	5.257	18868008	12099397	153.095	72.659 #
28) L6 AR-1254-3	6.659	5.685f	13065768	16390218	98.744	65.732 #
29) L6 AR-1254-4	6.971f	5.934f	8564515	13599872	86.170	79.265
30) L6 AR-1254-5	7.461f	6.382f	580373	3468283	6.599	15.895 #
31) L7 AR-1260-1	6.843	5.816	6488021	4309713	76.882	27.084 #
32) L7 AR-1260-2	7.116	6.026	854644	3243589	8.488	15.946 #
33) L7 AR-1260-3	7.510	6.189	291330	2373345	3.596	13.894 #
34) L7 AR-1260-4	7.760	6.701	183319	821232	2.302	5.650 #
35) L7 AR-1260-5	8.095	6.967	135723	804782	0.854	2.292 #
36) L8 AR-1262-1	7.530	6.458f	56484	256235	0.467	1.037 #
37) L8 AR-1262-2	8.109	6.701f	69888	821232	0.363	4.249 #
38) L8 AR-1262-3	8.433	7.307f	166682	187684	1.241	1.156
39) L8 AR-1262-4	8.538	7.336f	16286	1154445	0.259	4.031 #
40) L8 AR-1262-5	9.203	7.883f	50219	464062	0.728	3.537 #
41) L9 AR-1268-1	8.433	7.307f	166682	187684	0.693	0.392 #

Data Path : Z:\pestpcbsrv\HPCHEM1\ECD\_P\Data\PP050422\  
 Data File : PP047007.D  
 Signal(s) : Signal #1: ECD1A.ch Signal #2: ECD2B.ch  
 Acq On : 04 May 2022 21:56  
 Operator : YP\AJ  
 Sample : AR1242CCC500  
 Misc :  
 ALS Vial : 4 Sample Multiplier: 1

Instrument :  
 ECD\_P  
 ClientSampleId :  
 AR1242CCC500

Integration File signal 1: autoint1.e  
 Integration File signal 2: autoint2.e  
 Quant Time: May 05 05:29:58 2022  
 Quant Method : Z:\pestpcbsrv\HPCHEM1\ECD\_P\methods\PP042222.M  
 Quant Title : GC EXTRACTABLES  
 QLast Update : Tue May 03 11:45:42 2022  
 Response via : Initial Calibration  
 Integrator: ChemStation

Volume Inj. : 2 µl  
 Signal #1 Phase : ZB-MR1 Signal #2 Phase: ZB-MR2  
 Signal #1 Info : 30Mx0.32mmx 0.50µ Signal #2 Info : 30M x 0.32mm x 0.25µm

	Compound	RT#1	RT#2	Resp#1	Resp#2	ng/ml	ng/ml
42)	L9 AR-1268-2	8.538	7.336f	16286	1154445	0.074	2.726 #
43)	L9 AR-1268-3	8.779	7.595f	82045	2639963	0.427	7.464 #
44)	L9 AR-1268-4	9.203	7.883f	50219	464062	0.651	3.156 #
45)	L9 AR-1268-5	9.634	8.212	98309	54053	0.176	0.053 #

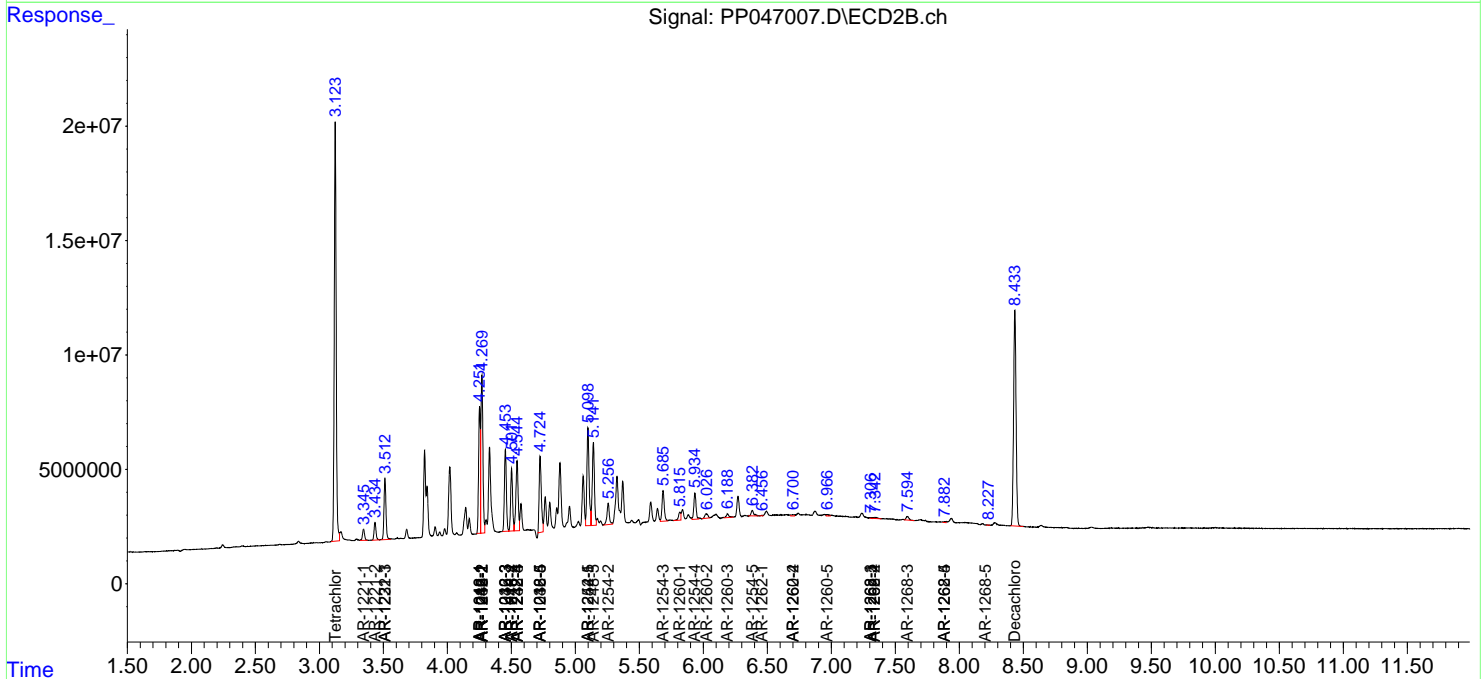
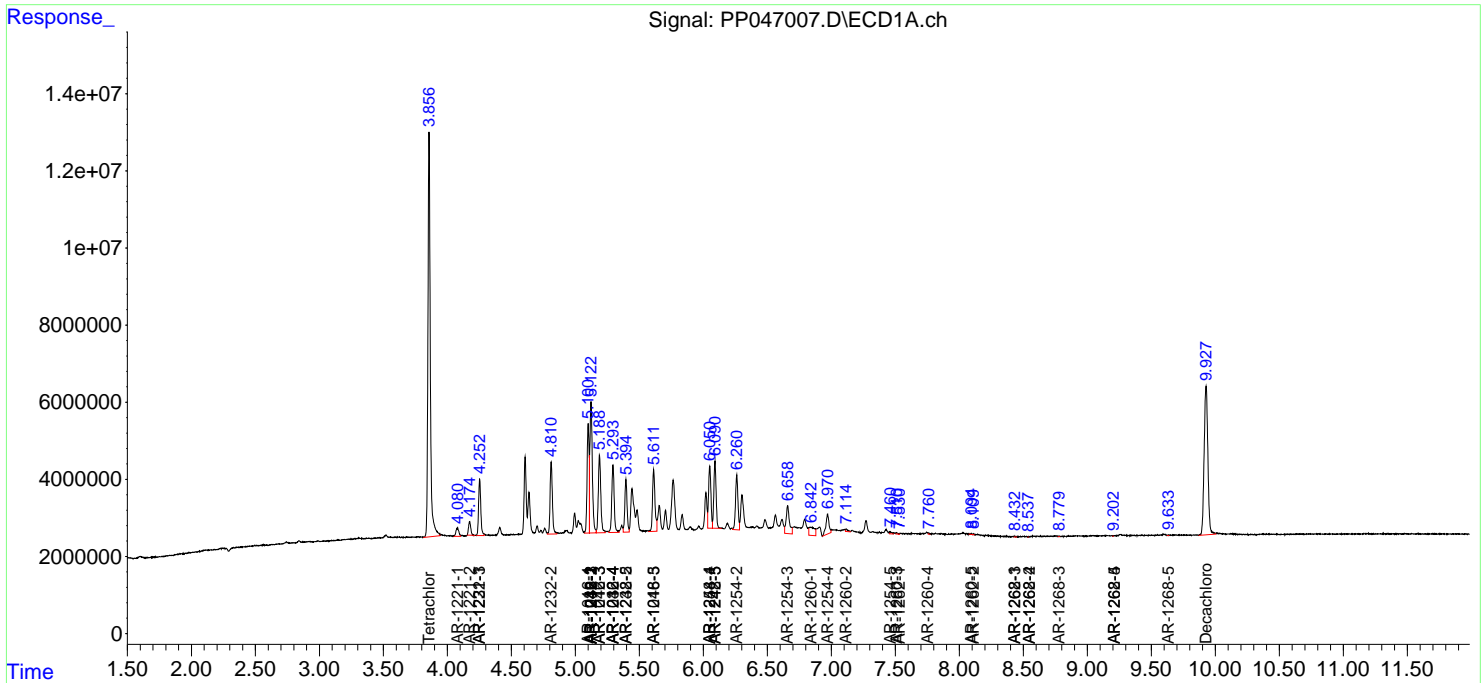
(f)=RT Delta > 1/2 Window (#)=Amounts differ by > 25% (m)=manual int.

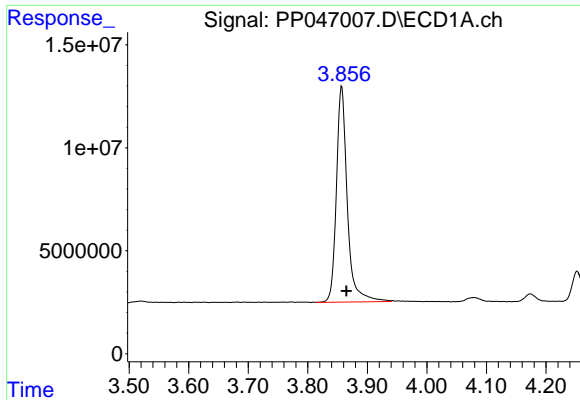
Data Path : Z:\pestpcbsrv\HPCHEM1\ECD\_P\Data\PP050422\  
 Data File : PP047007.D  
 Signal(s) : Signal #1: ECD1A.ch Signal #2: ECD2B.ch  
 Acq On : 04 May 2022 21:56  
 Operator : YP\AJ  
 Sample : AR1242CCC500  
 Misc :  
 ALS Vial : 4 Sample Multiplier: 1

Instrument :  
 ECD\_P  
 ClientSampleId :  
 AR1242CCC500

Integration File signal 1: autoint1.e  
 Integration File signal 2: autoint2.e  
 Quant Time: May 05 05:29:58 2022  
 Quant Method : Z:\pestpcbsrv\HPCHEM1\ECD\_P\methods\PP042222.M  
 Quant Title : GC EXTRACTABLES  
 QLast Update : Tue May 03 11:45:42 2022  
 Response via : Initial Calibration  
 Integrator: ChemStation

Volume Inj. : 2 µl  
 Signal #1 Phase : ZB-MR1 Signal #2 Phase: ZB-MR2  
 Signal #1 Info : 30Mx0.32mmx 0.50µ Signal #2 Info : 30M x 0.32mm x 0.25µm

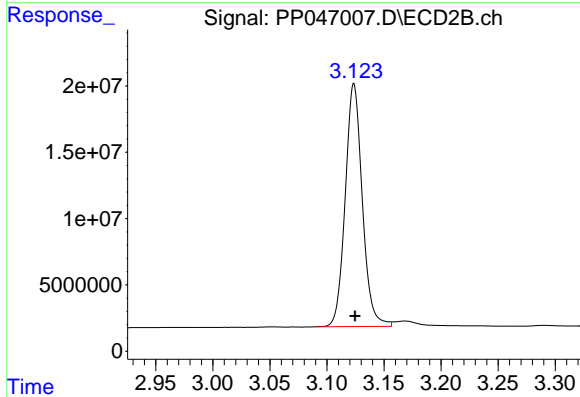




#1 Tetrachloro-m-xylene

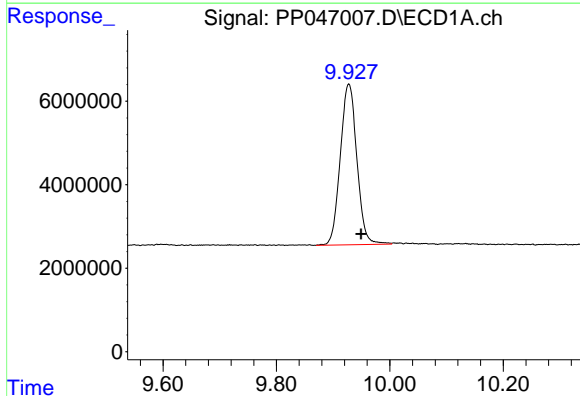
R.T.: 3.857 min  
 Delta R.T.: -0.008 min  
 Response: 133482783  
 Conc: 55.30 ng/ml

Instrument :  
 ECD\_P  
 ClientSampleId :  
 AR1242CCC500



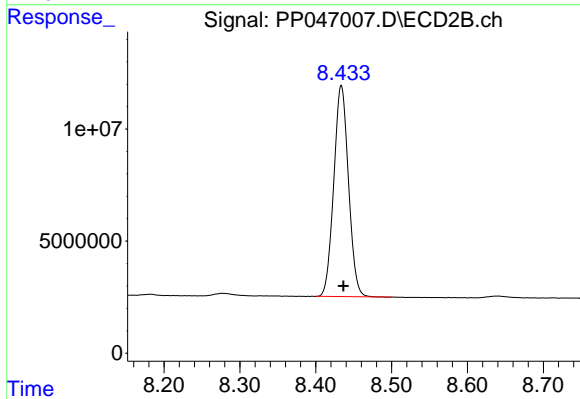
#1 Tetrachloro-m-xylene

R.T.: 3.124 min  
 Delta R.T.: -0.001 min  
 Response: 190774233  
 Conc: 58.16 ng/ml



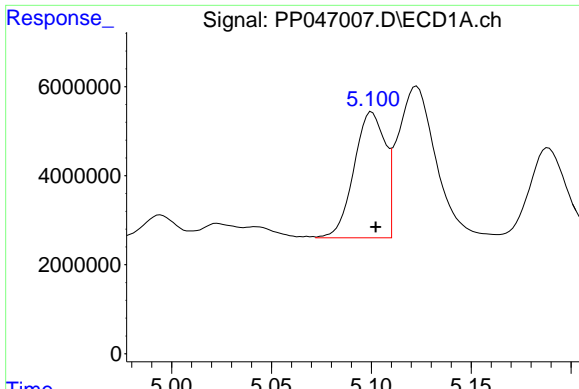
#2 Decachlorobiphenyl

R.T.: 9.928 min  
 Delta R.T.: -0.021 min  
 Response: 78179204  
 Conc: 53.13 ng/ml



#2 Decachlorobiphenyl

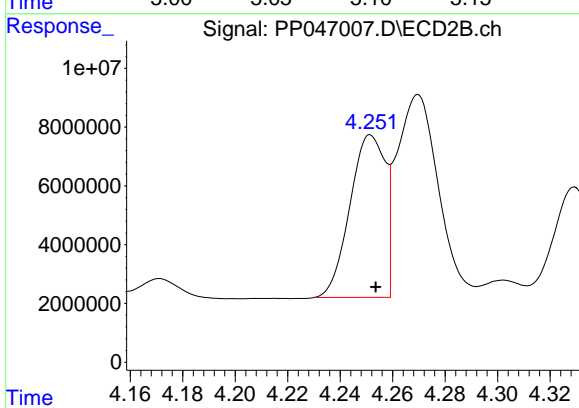
R.T.: 8.434 min  
 Delta R.T.: -0.003 min  
 Response: 126648912  
 Conc: 53.10 ng/ml



#3 AR-1016-1

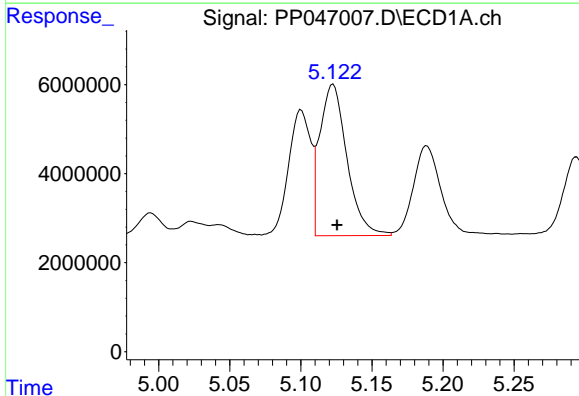
R.T.: 5.100 min  
 Delta R.T.: -0.002 min  
 Response: 30694844  
 Conc: 407.63 ng/ml

Instrument :  
 ECD\_P  
 ClientSampleId :  
 AR1242CCC500



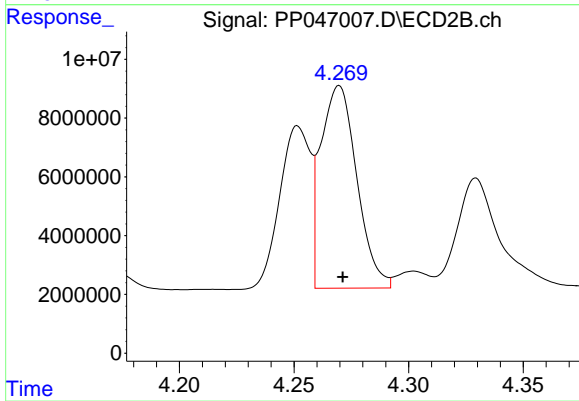
#3 AR-1016-1

R.T.: 4.252 min  
 Delta R.T.: -0.002 min  
 Response: 51436798  
 Conc: 447.72 ng/ml



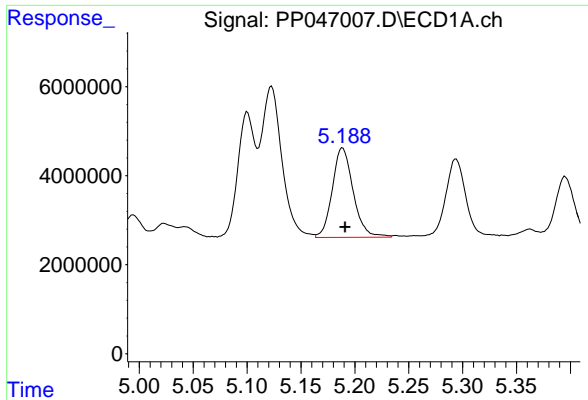
#4 AR-1016-2

R.T.: 5.123 min  
 Delta R.T.: -0.003 min  
 Response: 45198590  
 Conc: 396.93 ng/ml



#4 AR-1016-2

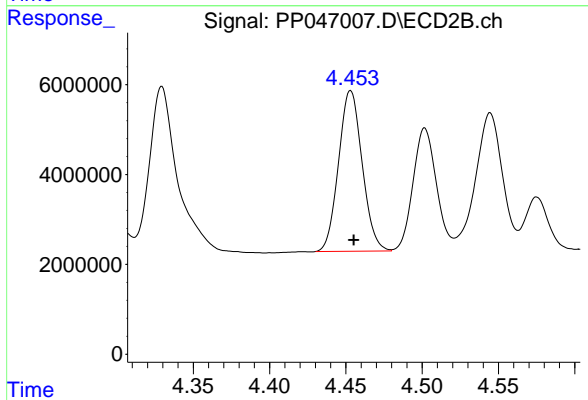
R.T.: 4.270 min  
 Delta R.T.: -0.001 min  
 Response: 75608315  
 Conc: 445.63 ng/ml



#5 AR-1016-3

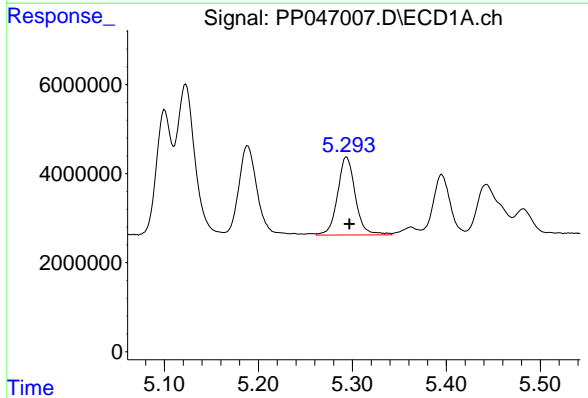
R.T.: 5.189 min  
 Delta R.T.: -0.002 min  
 Response: 27189391  
 Conc: 380.35 ng/ml

Instrument :  
 ECD\_P  
 ClientSampleId :  
 AR1242CCC500



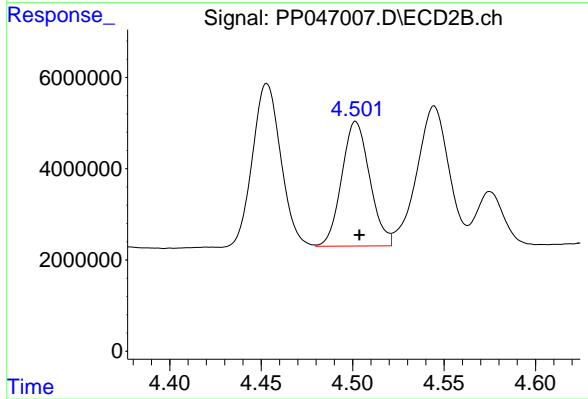
#5 AR-1016-3

R.T.: 4.453 min  
 Delta R.T.: -0.002 min  
 Response: 38537117  
 Conc: 440.20 ng/ml



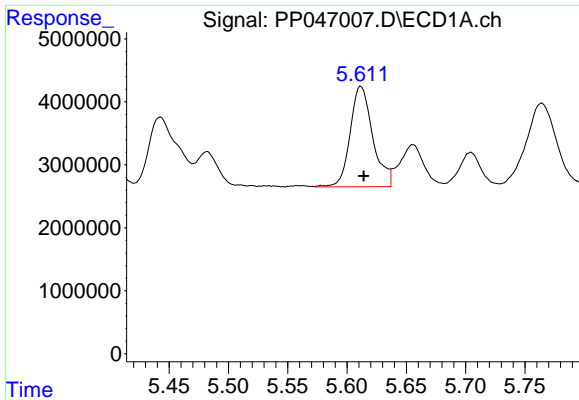
#6 AR-1016-4

R.T.: 5.294 min  
 Delta R.T.: -0.003 min  
 Response: 22982904  
 Conc: 382.27 ng/ml



#6 AR-1016-4

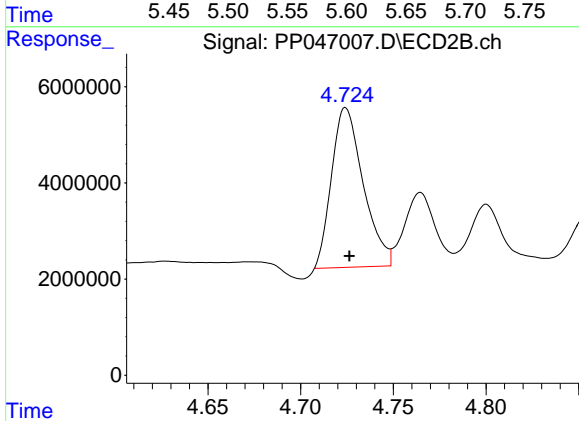
R.T.: 4.502 min  
 Delta R.T.: -0.002 min  
 Response: 29154407  
 Conc: 418.76 ng/ml



#7 AR-1016-5

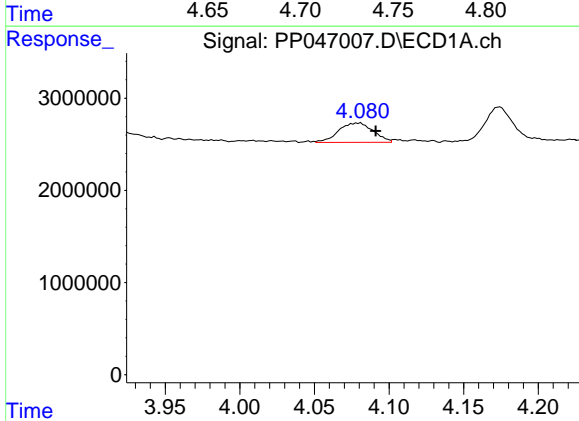
R.T.: 5.612 min  
 Delta R.T.: -0.002 min  
 Response: 21184761  
 Conc: 400.11 ng/ml

Instrument :  
 ECD\_P  
 ClientSampleId :  
 AR1242CCC500



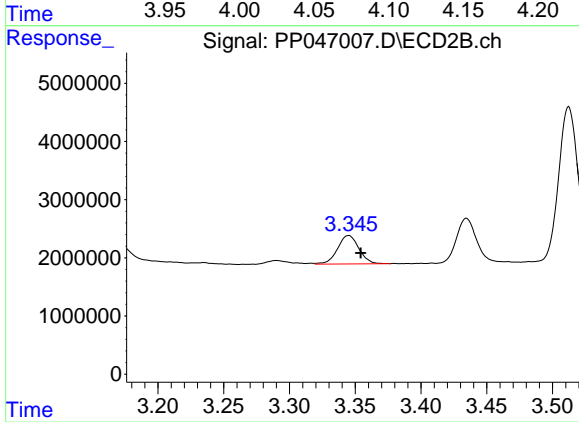
#7 AR-1016-5

R.T.: 4.724 min  
 Delta R.T.: -0.002 min  
 Response: 39507468  
 Conc: 464.51 ng/ml



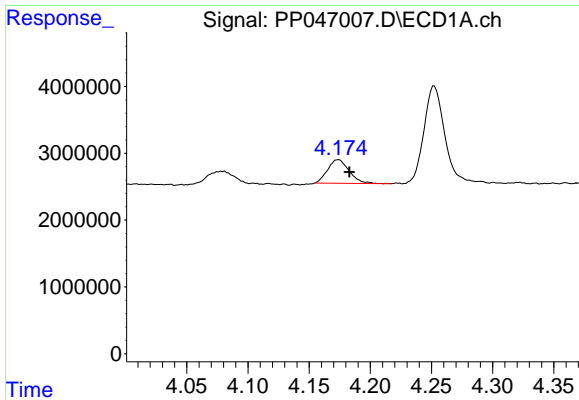
#8 AR-1221-1

R.T.: 4.081 min  
 Delta R.T.: -0.010 min  
 Response: 3412889  
 Conc: 123.75 ng/ml



#8 AR-1221-1

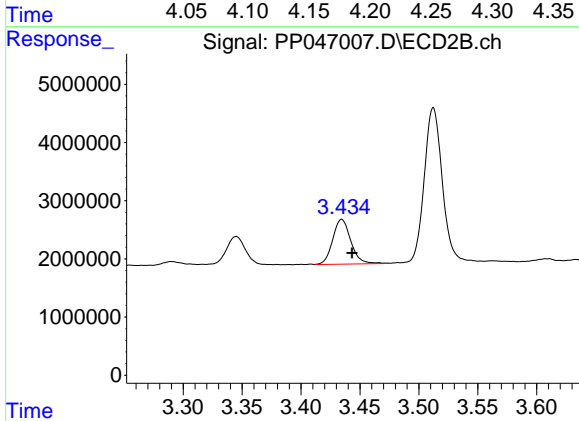
R.T.: 3.345 min  
 Delta R.T.: -0.009 min  
 Response: 5543186  
 Conc: 125.53 ng/ml



#9 AR-1221-2

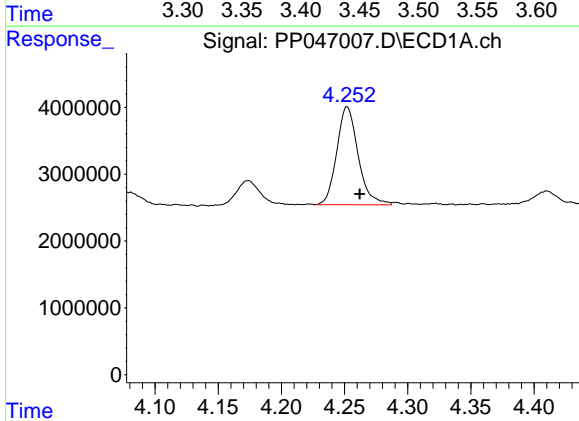
R.T.: 4.174 min  
 Delta R.T.: -0.009 min  
 Response: 4318719  
 Conc: 212.71 ng/ml

Instrument :  
 ECD\_P  
 ClientSampleId :  
 AR1242CCC500



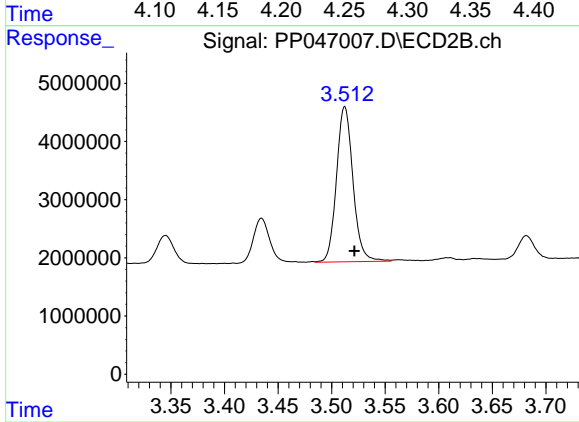
#9 AR-1221-2

R.T.: 3.435 min  
 Delta R.T.: -0.009 min  
 Response: 8238330  
 Conc: 243.92 ng/ml



#10 AR-1221-3

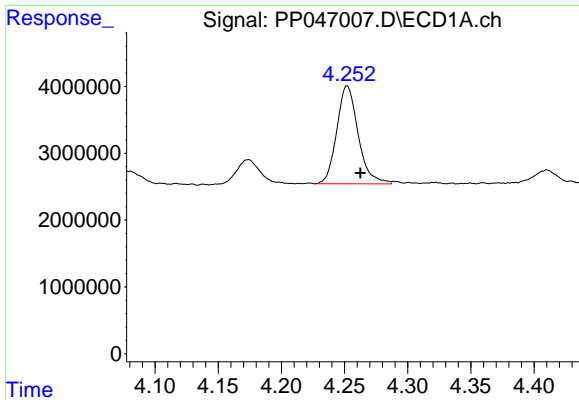
R.T.: 4.252 min  
 Delta R.T.: -0.010 min  
 Response: 17285690  
 Conc: 265.17 ng/ml



#10 AR-1221-3

R.T.: 3.512 min  
 Delta R.T.: -0.009 min  
 Response: 28618942  
 Conc: 288.10 ng/ml

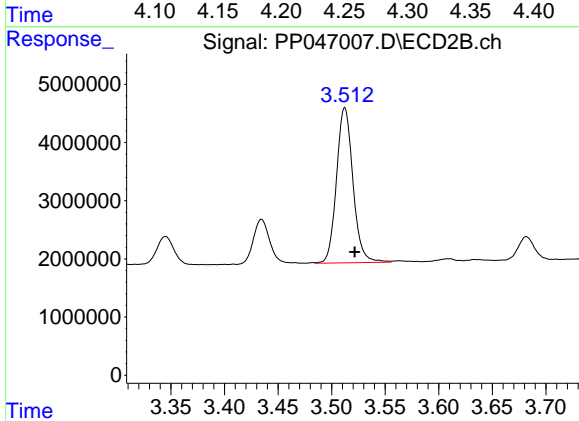




#11 AR-1232-1

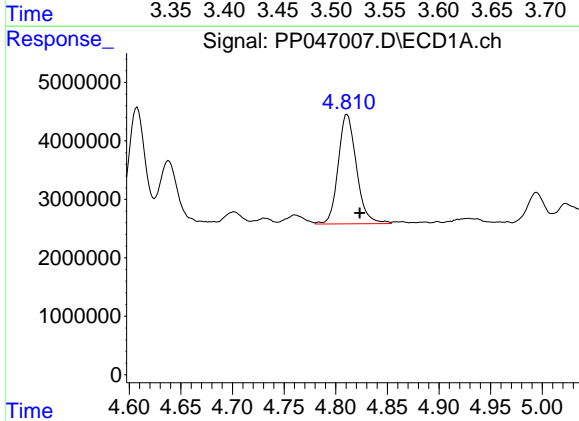
R.T.: 4.252 min  
 Delta R.T.: -0.010 min  
 Response: 17285690  
 Conc: 353.05 ng/ml

Instrument :  
 ECD\_P  
 ClientSampleId :  
 AR1242CCC500



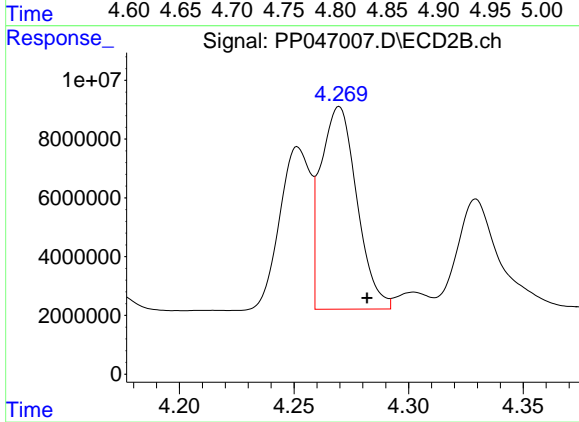
#11 AR-1232-1

R.T.: 3.512 min  
 Delta R.T.: -0.009 min  
 Response: 28618942  
 Conc: 377.26 ng/ml



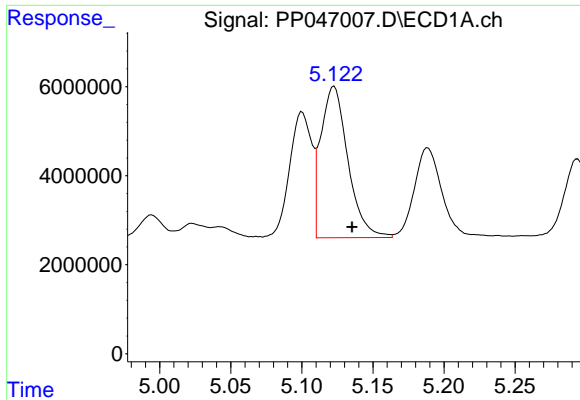
#12 AR-1232-2

R.T.: 4.811 min  
 Delta R.T.: -0.012 min  
 Response: 23114231  
 Conc: 952.23 ng/ml



#12 AR-1232-2

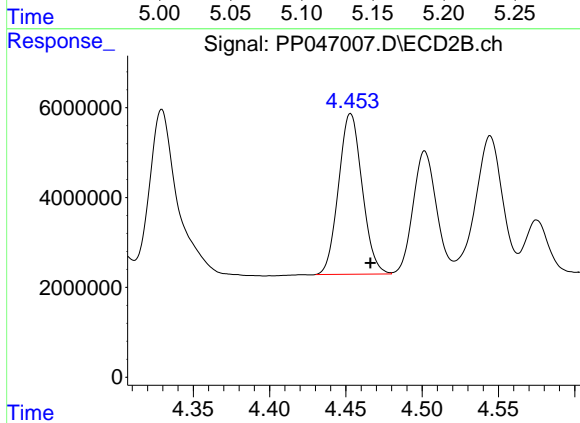
R.T.: 4.270 min  
 Delta R.T.: -0.012 min  
 Response: 75608315  
 Conc: 1048.77 ng/ml



#13 AR-1232-3

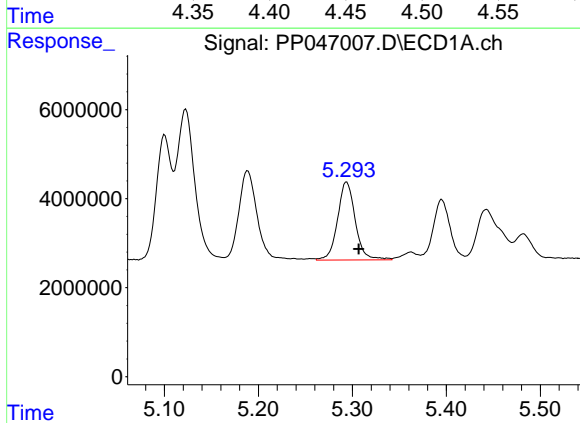
R.T.: 5.123 min  
 Delta R.T.: -0.012 min  
 Response: 45198590  
 Conc: 956.95 ng/ml

Instrument :  
 ECD\_P  
 ClientSampleId :  
 AR1242CCC500



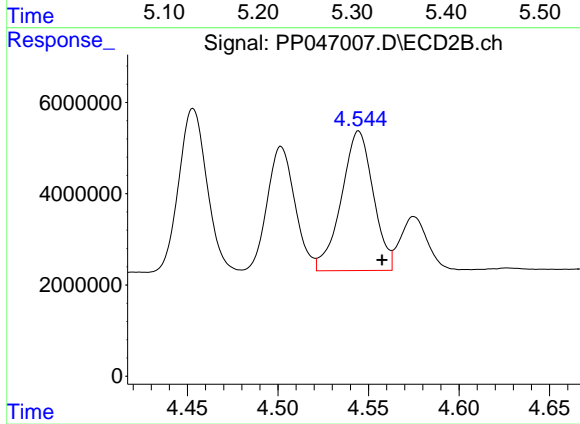
#13 AR-1232-3

R.T.: 4.453 min  
 Delta R.T.: -0.013 min  
 Response: 38537117  
 Conc: 1058.43 ng/ml



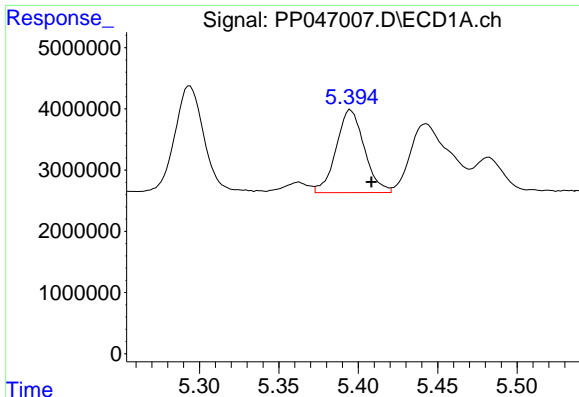
#14 AR-1232-4

R.T.: 5.294 min  
 Delta R.T.: -0.013 min  
 Response: 22982904  
 Conc: 944.55 ng/ml



#14 AR-1232-4

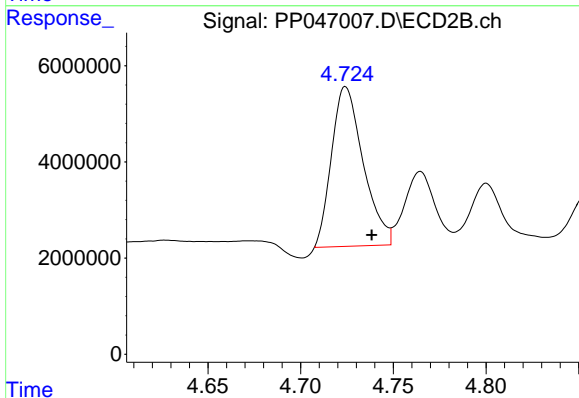
R.T.: 4.545 min  
 Delta R.T.: -0.013 min  
 Response: 37457686  
 Conc: 1175.84 ng/ml



#15 AR-1232-5

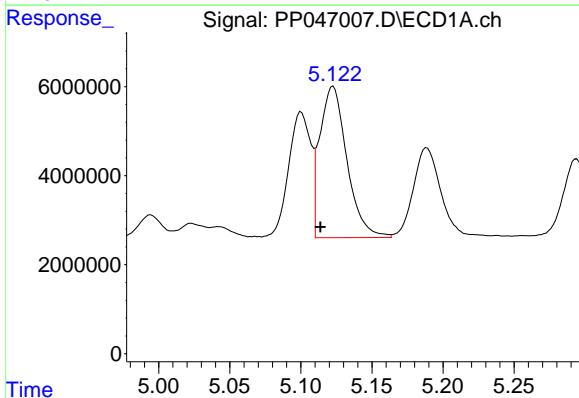
R.T.: 5.395 min  
 Delta R.T.: -0.013 min  
 Response: 16723132  
 Conc: 1005.09 ng/ml

Instrument :  
 ECD\_P  
 ClientSampleId :  
 AR1242CCC500



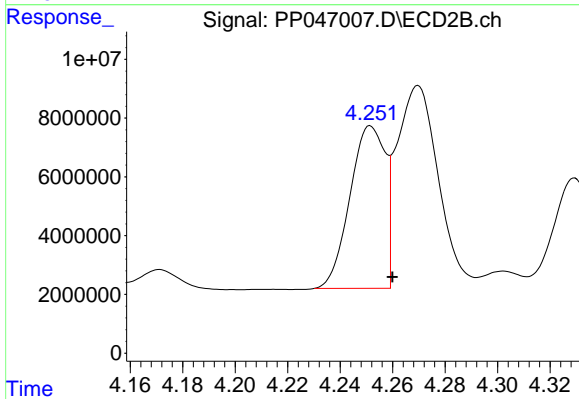
#15 AR-1232-5

R.T.: 4.724 min  
 Delta R.T.: -0.014 min  
 Response: 39507468  
 Conc: 1371.49 ng/ml



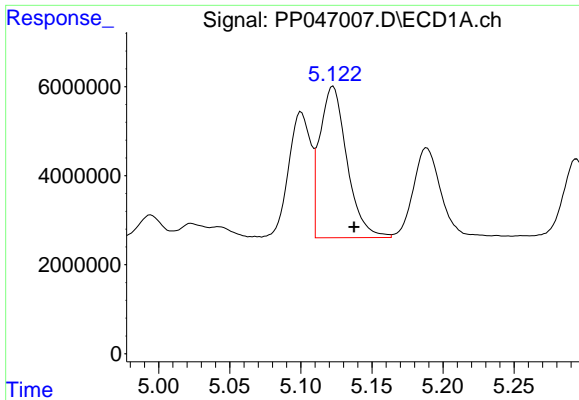
#16 AR-1242-1

R.T.: 5.123 min  
 Delta R.T.: 0.009 min  
 Response: 45198590  
 Conc: 712.87 ng/ml



#16 AR-1242-1

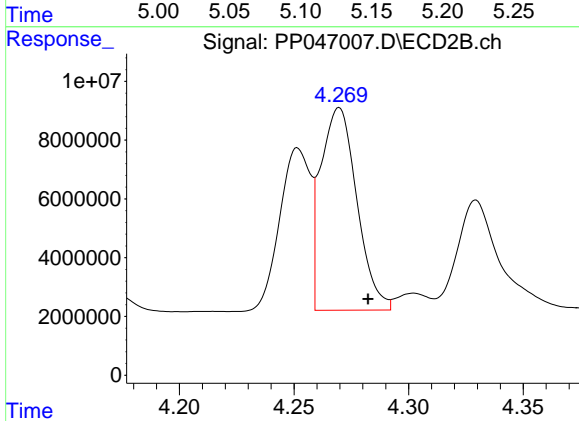
R.T.: 4.252 min  
 Delta R.T.: -0.008 min  
 Response: 51436798  
 Conc: 521.76 ng/ml



#17 AR-1242-2

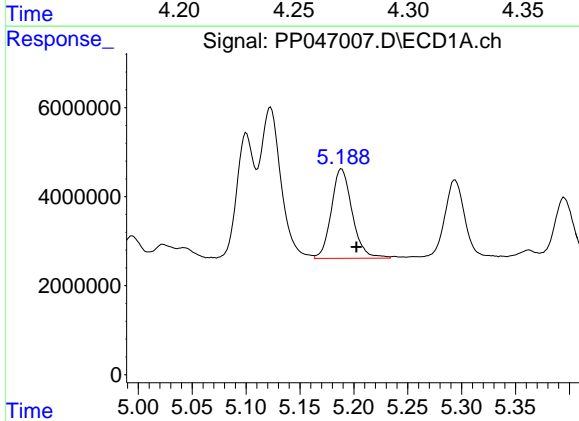
R.T.: 5.123 min  
 Delta R.T.: -0.015 min  
 Response: 45198590  
 Conc: 474.42 ng/ml

Instrument :  
 ECD\_P  
 ClientSampleId :  
 AR1242CCC500



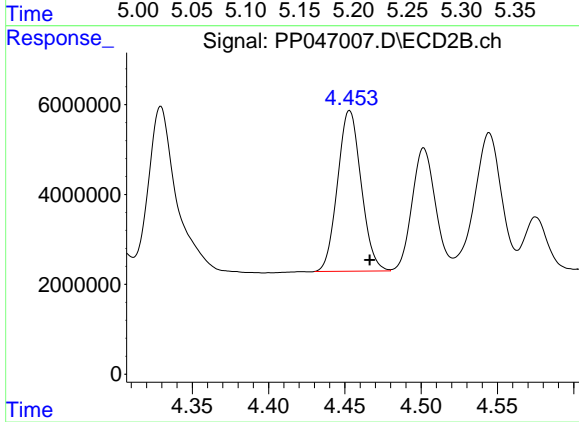
#17 AR-1242-2

R.T.: 4.270 min  
 Delta R.T.: -0.013 min  
 Response: 75608315  
 Conc: 522.01 ng/ml



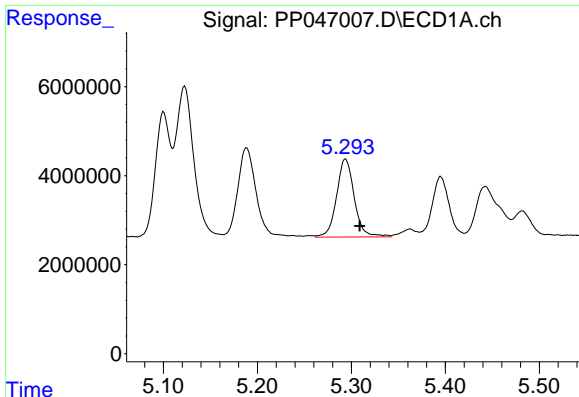
#18 AR-1242-3

R.T.: 5.189 min  
 Delta R.T.: -0.014 min  
 Response: 27189391  
 Conc: 454.18 ng/ml



#18 AR-1242-3

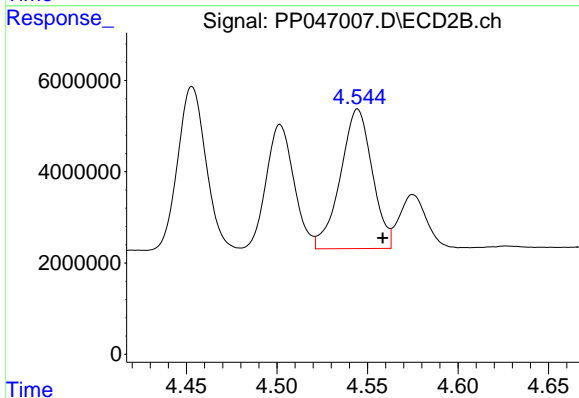
R.T.: 4.453 min  
 Delta R.T.: -0.013 min  
 Response: 38537117  
 Conc: 518.53 ng/ml



#19 AR-1242-4

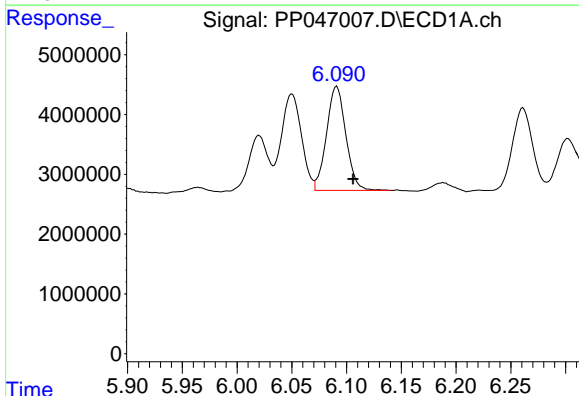
R.T.: 5.294 min  
 Delta R.T.: -0.015 min  
 Response: 22982904  
 Conc: 454.42 ng/ml

Instrument :  
 ECD\_P  
 ClientSampleId :  
 AR1242CCC500



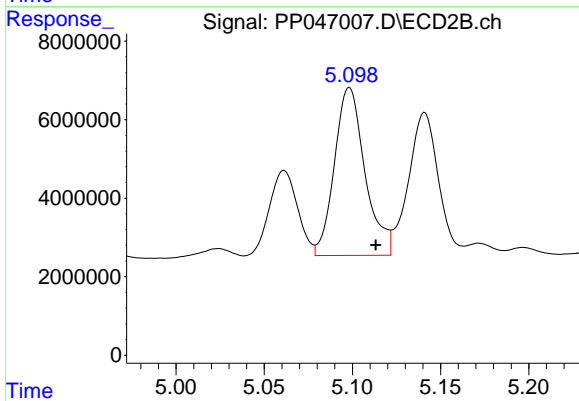
#19 AR-1242-4

R.T.: 4.545 min  
 Delta R.T.: -0.014 min  
 Response: 37457686  
 Conc: 524.47 ng/ml



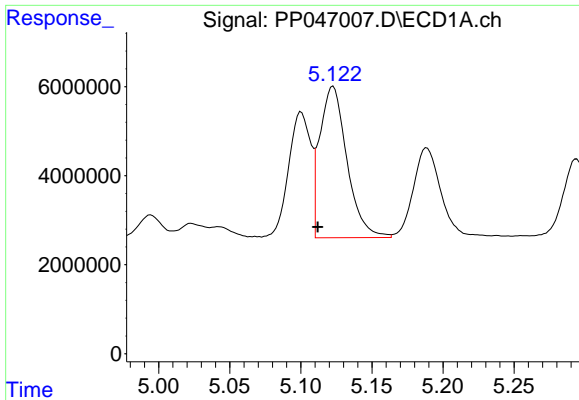
#20 AR-1242-5

R.T.: 6.091 min  
 Delta R.T.: -0.015 min  
 Response: 21382237  
 Conc: 424.33 ng/ml



#20 AR-1242-5

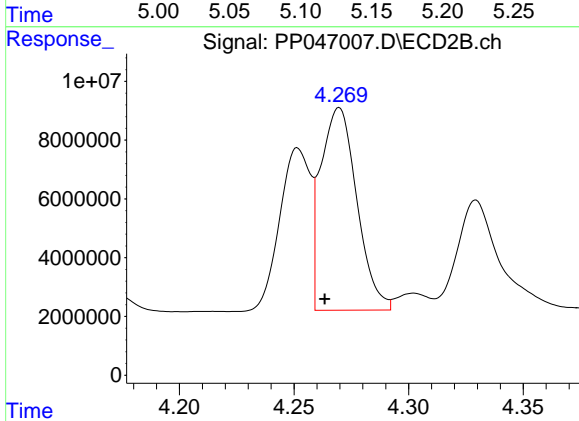
R.T.: 5.098 min  
 Delta R.T.: -0.015 min  
 Response: 51564248  
 Conc: 534.40 ng/ml



#21 AR-1248-1

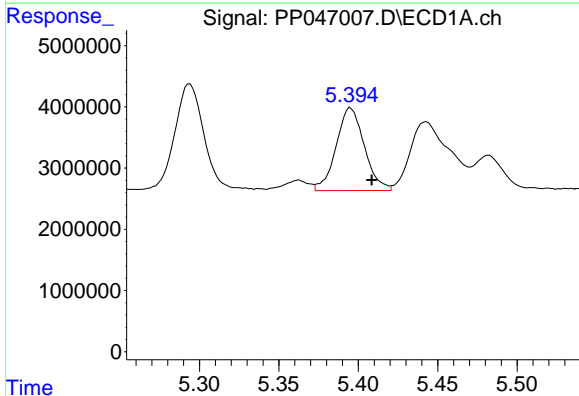
R.T.: 5.123 min  
 Delta R.T.: 0.011 min  
 Response: 45198590  
 Conc: 1081.43 ng/ml

Instrument :  
 ECD\_P  
 ClientSampleId :  
 AR1242CCC500



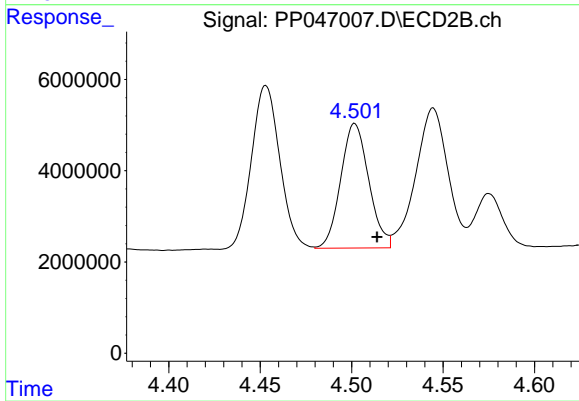
#21 AR-1248-1

R.T.: 4.270 min  
 Delta R.T.: 0.006 min  
 Response: 75608315  
 Conc: 1100.30 ng/ml



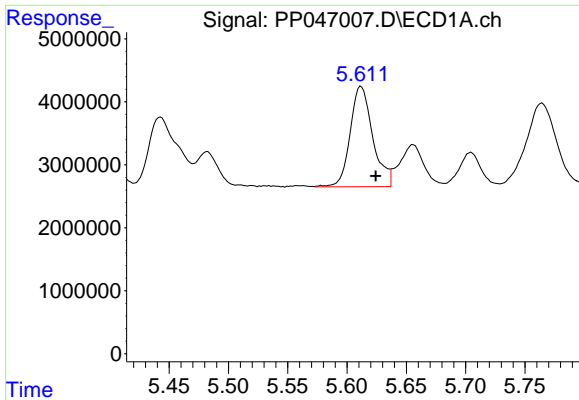
#22 AR-1248-2

R.T.: 5.395 min  
 Delta R.T.: -0.013 min  
 Response: 16723132  
 Conc: 282.95 ng/ml



#22 AR-1248-2

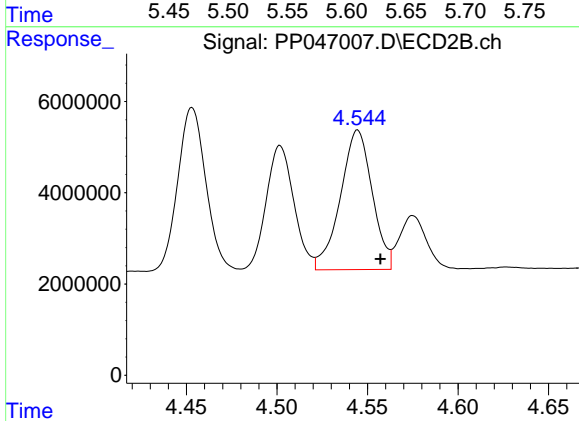
R.T.: 4.502 min  
 Delta R.T.: -0.012 min  
 Response: 29154407  
 Conc: 311.84 ng/ml



#23 AR-1248-3

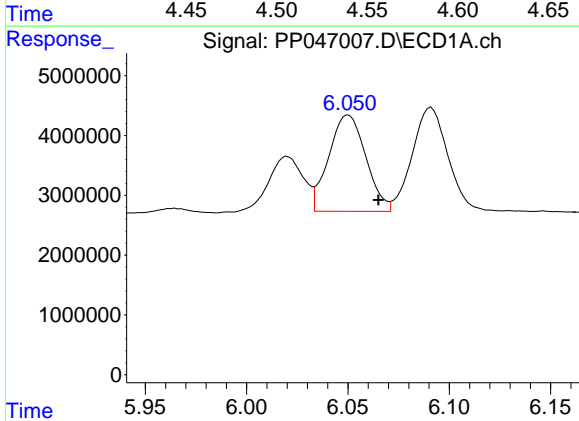
R.T.: 5.612 min  
 Delta R.T.: -0.012 min  
 Response: 21184761  
 Conc: 303.28 ng/ml

Instrument :  
 ECD\_P  
 ClientSampleId :  
 AR1242CCC500



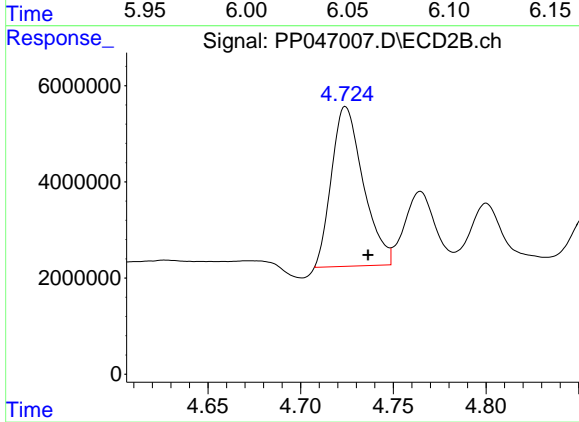
#23 AR-1248-3

R.T.: 4.545 min  
 Delta R.T.: -0.013 min  
 Response: 37457686  
 Conc: 383.70 ng/ml



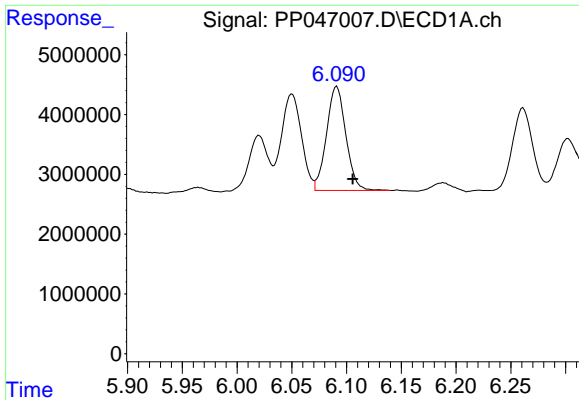
#24 AR-1248-4

R.T.: 6.050 min  
 Delta R.T.: -0.015 min  
 Response: 20522206  
 Conc: 267.63 ng/ml



#24 AR-1248-4

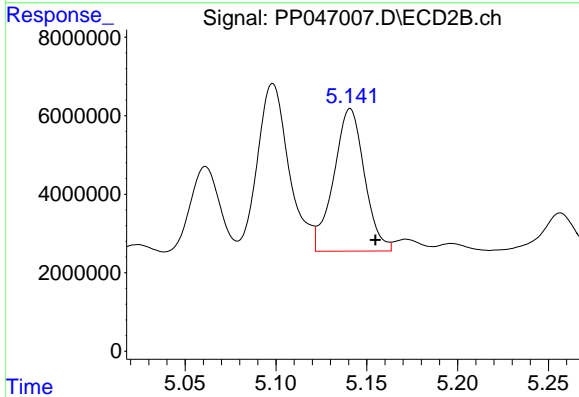
R.T.: 4.724 min  
 Delta R.T.: -0.012 min  
 Response: 39507468  
 Conc: 335.61 ng/ml



#25 AR-1248-5

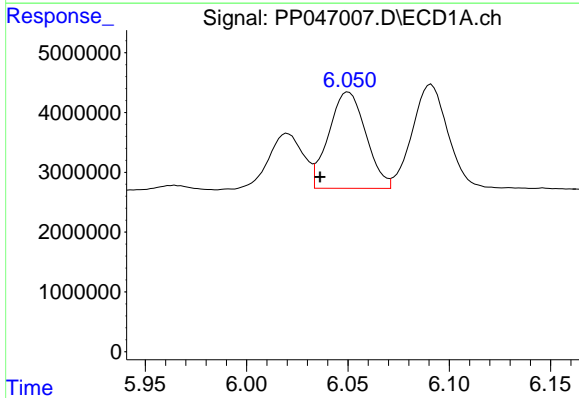
R.T.: 6.091 min  
 Delta R.T.: -0.014 min  
 Response: 21382237  
 Conc: 274.91 ng/ml

Instrument :  
 ECD\_P  
 ClientSampleId :  
 AR1242CCC500



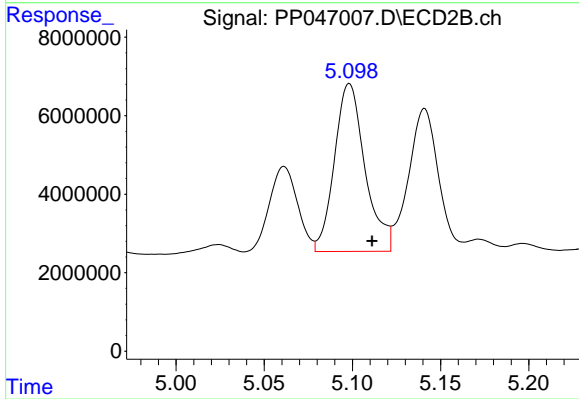
#25 AR-1248-5

R.T.: 5.141 min  
 Delta R.T.: -0.014 min  
 Response: 42836925  
 Conc: 351.52 ng/ml



#26 AR-1254-1

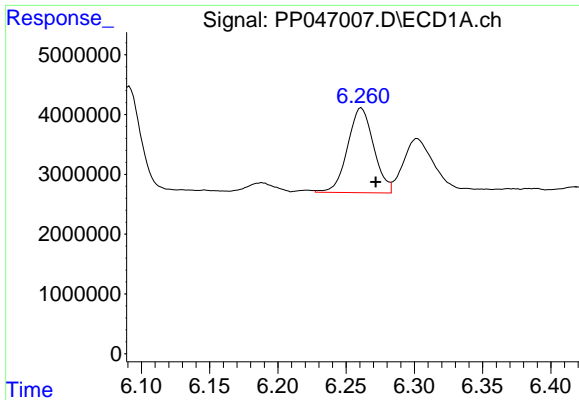
R.T.: 6.050 min  
 Delta R.T.: 0.014 min  
 Response: 20522206  
 Conc: 353.31 ng/ml



#26 AR-1254-1

R.T.: 5.098 min  
 Delta R.T.: -0.013 min  
 Response: 51564248  
 Conc: 267.22 ng/ml

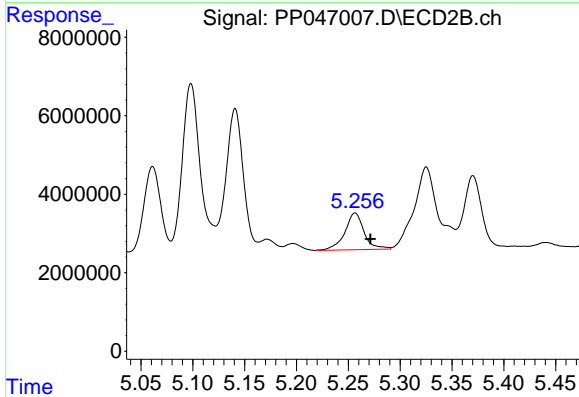




#27 AR-1254-2

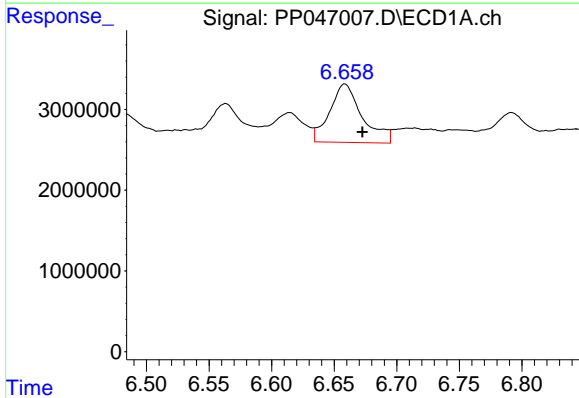
R.T.: 6.261 min  
 Delta R.T.: -0.011 min  
 Response: 18868008  
 Conc: 153.09 ng/ml

Instrument :  
 ECD\_P  
 ClientSampleId :  
 AR1242CCC500



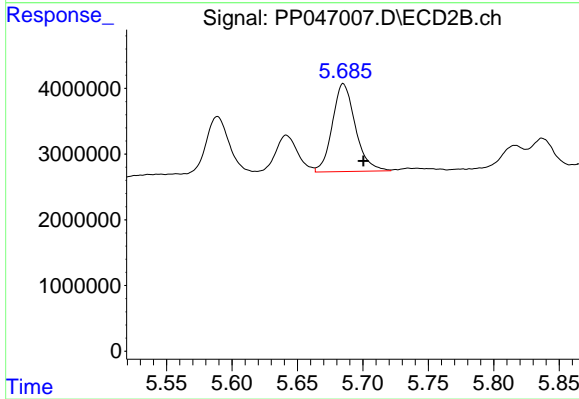
#27 AR-1254-2

R.T.: 5.257 min  
 Delta R.T.: -0.015 min  
 Response: 12099397  
 Conc: 72.66 ng/ml



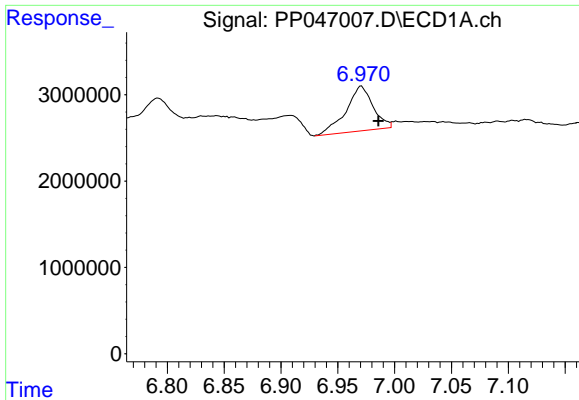
#28 AR-1254-3

R.T.: 6.659 min  
 Delta R.T.: -0.014 min  
 Response: 13065768  
 Conc: 98.74 ng/ml



#28 AR-1254-3

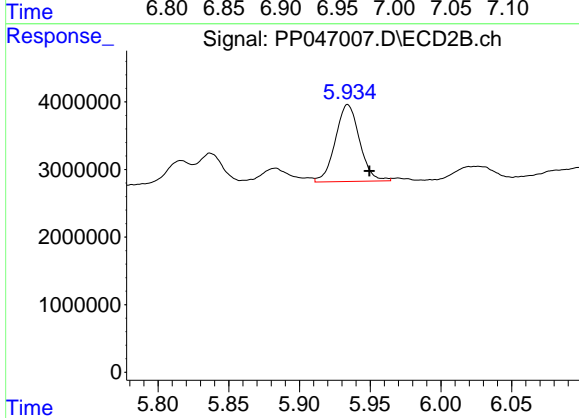
R.T.: 5.685 min  
 Delta R.T.: -0.015 min  
 Response: 16390218  
 Conc: 65.73 ng/ml



#29 AR-1254-4

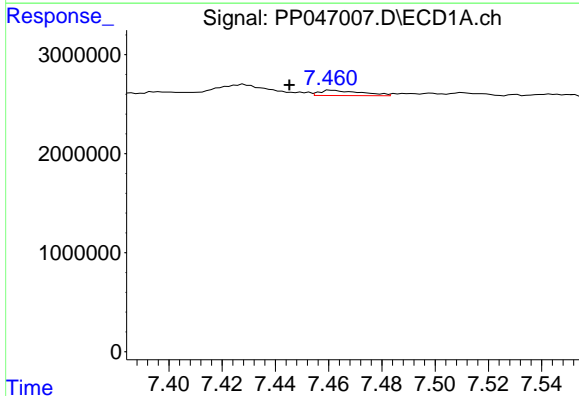
R.T.: 6.971 min  
 Delta R.T.: -0.015 min  
 Response: 8564515  
 Conc: 86.17 ng/ml

Instrument :  
 ECD\_P  
 ClientSampleId :  
 AR1242CCC500



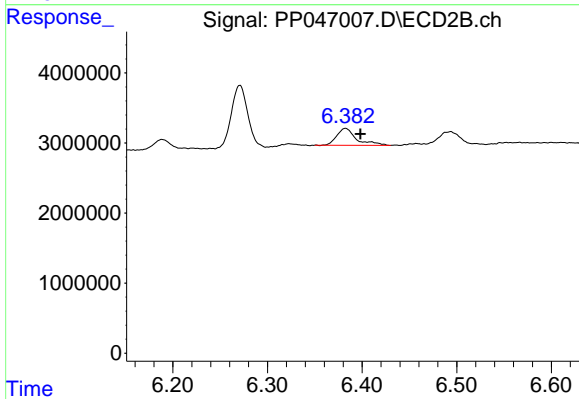
#29 AR-1254-4

R.T.: 5.934 min  
 Delta R.T.: -0.015 min  
 Response: 13599872  
 Conc: 79.27 ng/ml



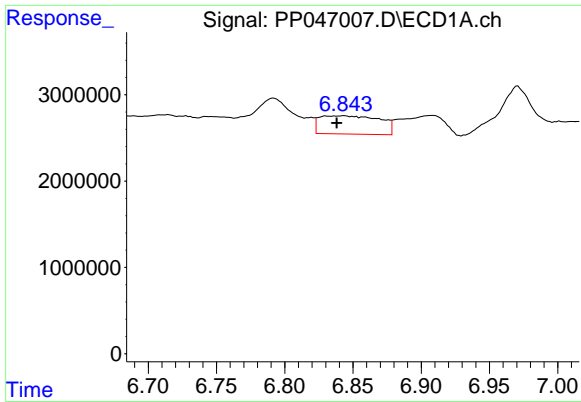
#30 AR-1254-5

R.T.: 7.461 min  
 Delta R.T.: 0.016 min  
 Response: 580373  
 Conc: 6.60 ng/ml



#30 AR-1254-5

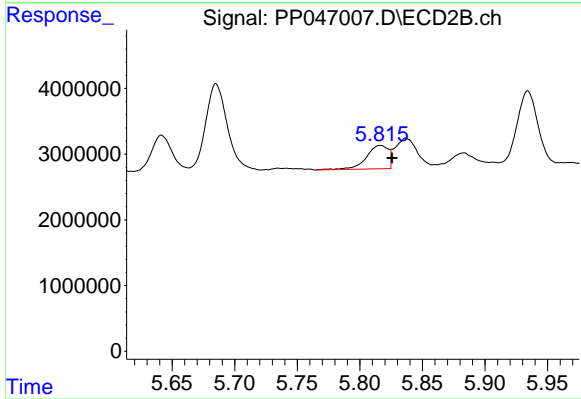
R.T.: 6.382 min  
 Delta R.T.: -0.016 min  
 Response: 3468283  
 Conc: 15.89 ng/ml



#31 AR-1260-1

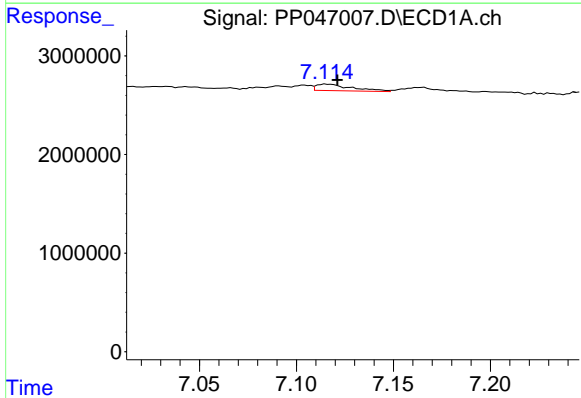
R.T.: 6.843 min  
 Delta R.T.: 0.005 min  
 Response: 6488021  
 Conc: 76.88 ng/ml

Instrument :  
 ECD\_P  
 ClientSampleId :  
 AR1242CCC500



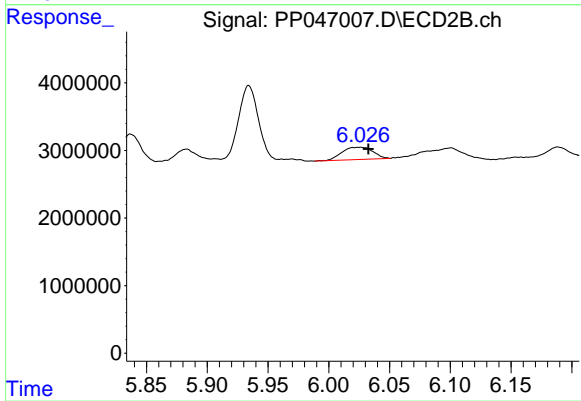
#31 AR-1260-1

R.T.: 5.816 min  
 Delta R.T.: -0.009 min  
 Response: 4309713  
 Conc: 27.08 ng/ml



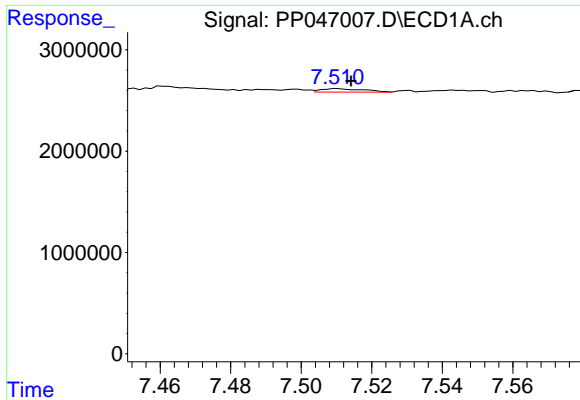
#32 AR-1260-2

R.T.: 7.116 min  
 Delta R.T.: -0.006 min  
 Response: 854644  
 Conc: 8.49 ng/ml



#32 AR-1260-2

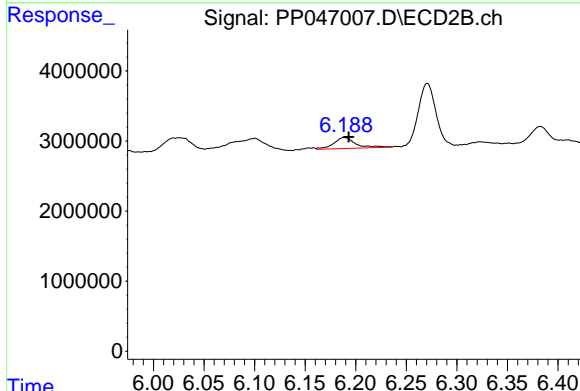
R.T.: 6.026 min  
 Delta R.T.: -0.007 min  
 Response: 3243589  
 Conc: 15.95 ng/ml



#33 AR-1260-3

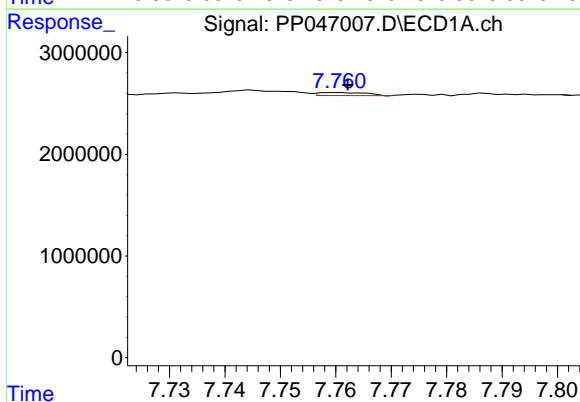
R.T.: 7.510 min  
 Delta R.T.: -0.004 min  
 Response: 291330  
 Conc: 3.60 ng/ml

Instrument :  
 ECD\_P  
 ClientSampleId :  
 AR1242CCC500



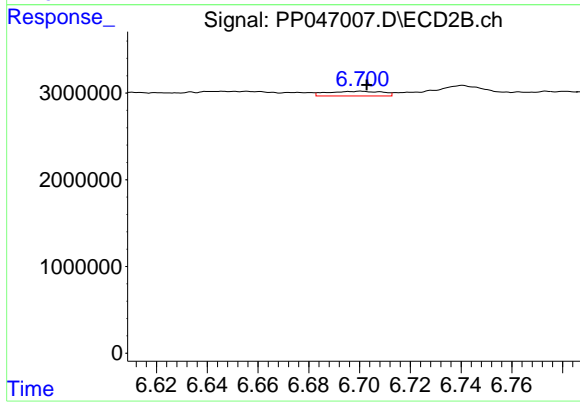
#33 AR-1260-3

R.T.: 6.189 min  
 Delta R.T.: -0.005 min  
 Response: 2373345  
 Conc: 13.89 ng/ml



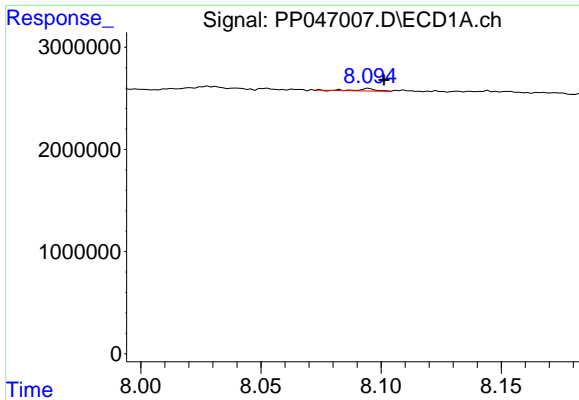
#34 AR-1260-4

R.T.: 7.760 min  
 Delta R.T.: -0.002 min  
 Response: 183319  
 Conc: 2.30 ng/ml



#34 AR-1260-4

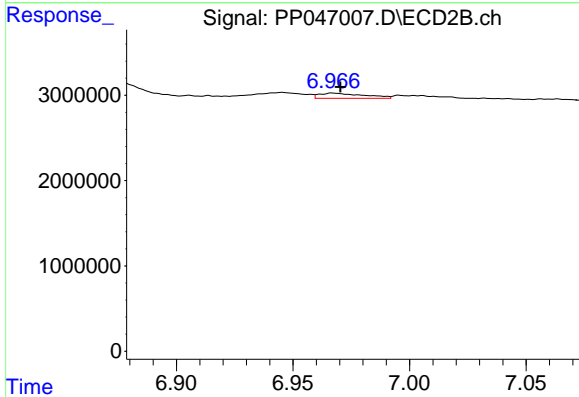
R.T.: 6.701 min  
 Delta R.T.: -0.002 min  
 Response: 821232  
 Conc: 5.65 ng/ml



#35 AR-1260-5

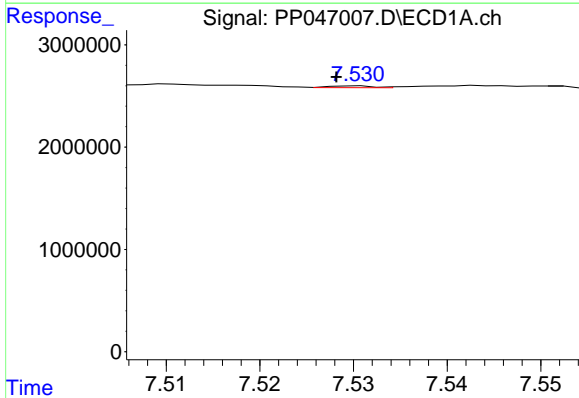
R.T.: 8.095 min  
 Delta R.T.: -0.006 min  
 Response: 135723  
 Conc: 0.85 ng/ml

Instrument :  
 ECD\_P  
 ClientSampleId :  
 AR1242CCC500



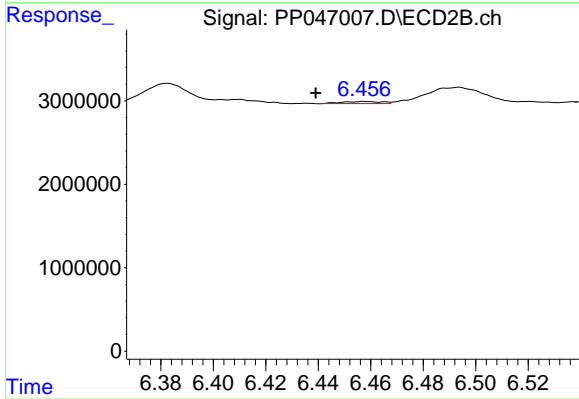
#35 AR-1260-5

R.T.: 6.967 min  
 Delta R.T.: -0.003 min  
 Response: 804782  
 Conc: 2.29 ng/ml



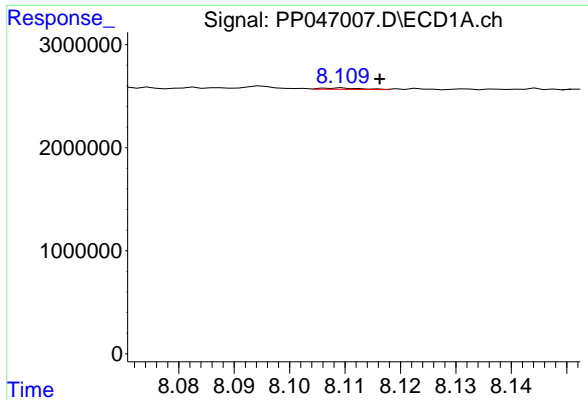
#36 AR-1262-1

R.T.: 7.530 min  
 Delta R.T.: 0.002 min  
 Response: 56484  
 Conc: 0.47 ng/ml



#36 AR-1262-1

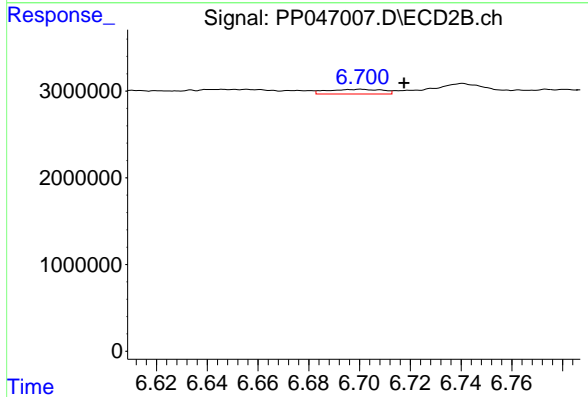
R.T.: 6.458 min  
 Delta R.T.: 0.019 min  
 Response: 256235  
 Conc: 1.04 ng/ml



#37 AR-1262-2

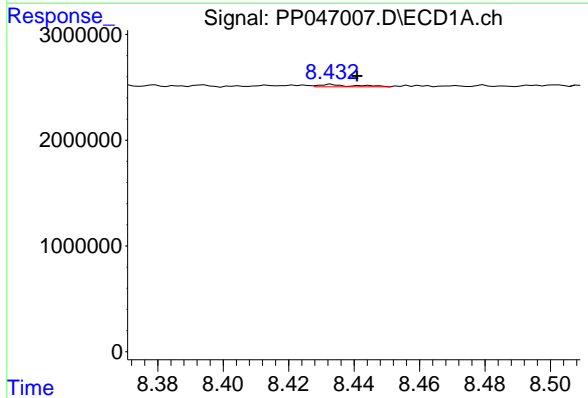
R.T.: 8.109 min  
 Delta R.T.: -0.007 min  
 Response: 69888  
 Conc: 0.36 ng/ml

Instrument :  
 ECD\_P  
 ClientSampleId :  
 AR1242CCC500



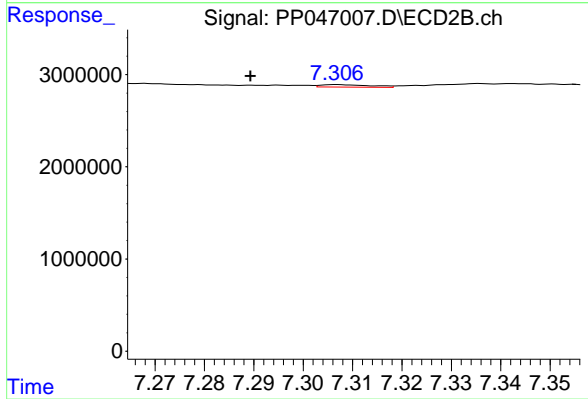
#37 AR-1262-2

R.T.: 6.701 min  
 Delta R.T.: -0.017 min  
 Response: 821232  
 Conc: 4.25 ng/ml



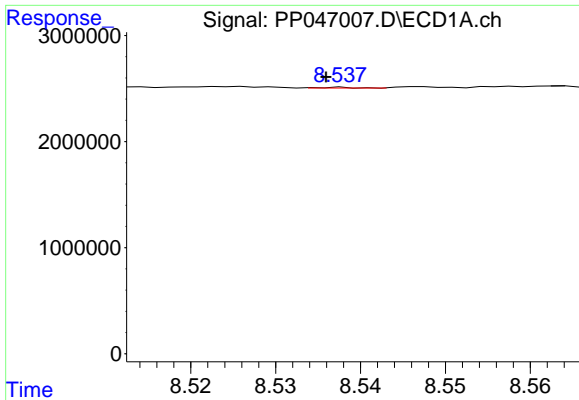
#38 AR-1262-3

R.T.: 8.433 min  
 Delta R.T.: -0.008 min  
 Response: 166682  
 Conc: 1.24 ng/ml



#38 AR-1262-3

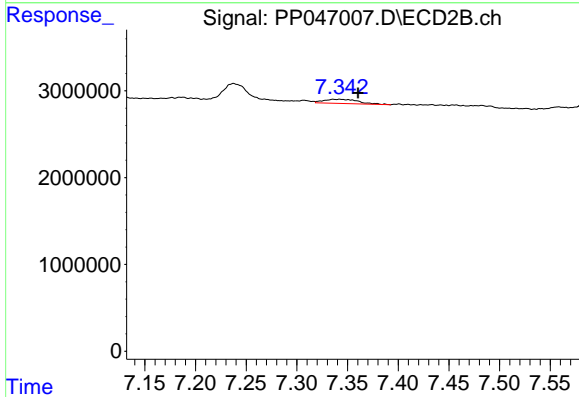
R.T.: 7.307 min  
 Delta R.T.: 0.018 min  
 Response: 187684  
 Conc: 1.16 ng/ml



#39 AR-1262-4

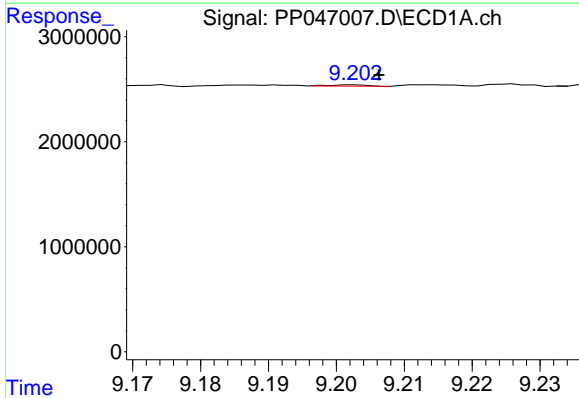
R.T.: 8.538 min  
 Delta R.T.: 0.002 min  
 Response: 16286  
 Conc: 0.26 ng/ml

Instrument :  
 ECD\_P  
 ClientSampleId :  
 AR1242CCC500



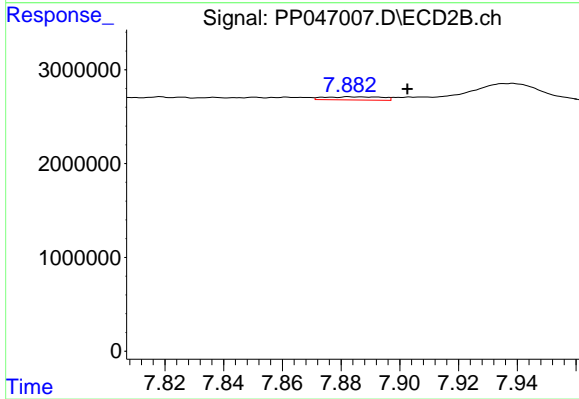
#39 AR-1262-4

R.T.: 7.336 min  
 Delta R.T.: -0.024 min  
 Response: 1154445  
 Conc: 4.03 ng/ml



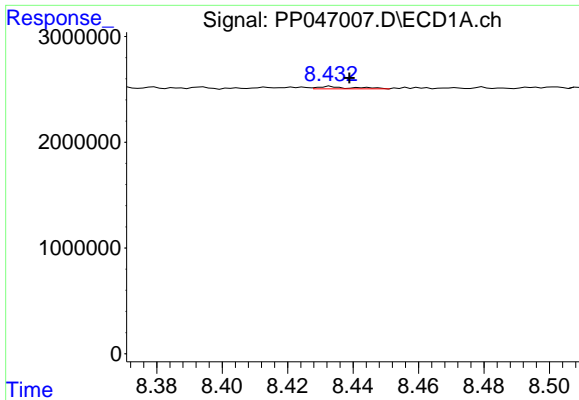
#40 AR-1262-5

R.T.: 9.203 min  
 Delta R.T.: -0.003 min  
 Response: 50219  
 Conc: 0.73 ng/ml



#40 AR-1262-5

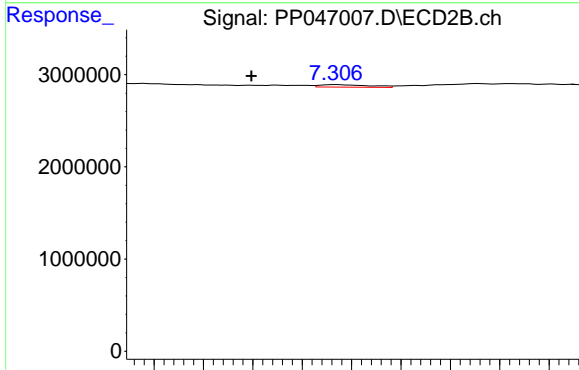
R.T.: 7.883 min  
 Delta R.T.: -0.020 min  
 Response: 464062  
 Conc: 3.54 ng/ml



#41 AR-1268-1

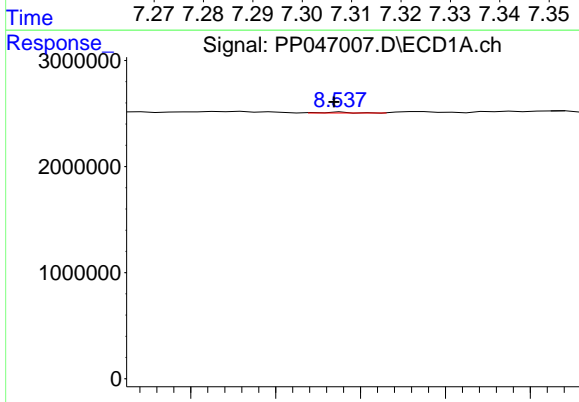
R.T.: 8.433 min  
 Delta R.T.: -0.006 min  
 Response: 166682  
 Conc: 0.69 ng/ml

Instrument :  
 ECD\_P  
 ClientSampleId :  
 AR1242CCC500



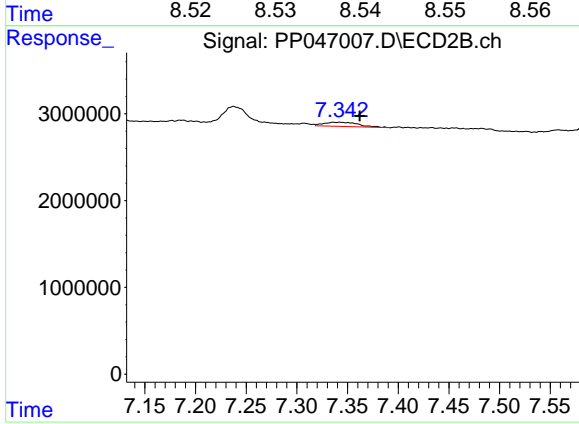
#41 AR-1268-1

R.T.: 7.307 min  
 Delta R.T.: 0.017 min  
 Response: 187684  
 Conc: 0.39 ng/ml



#42 AR-1268-2

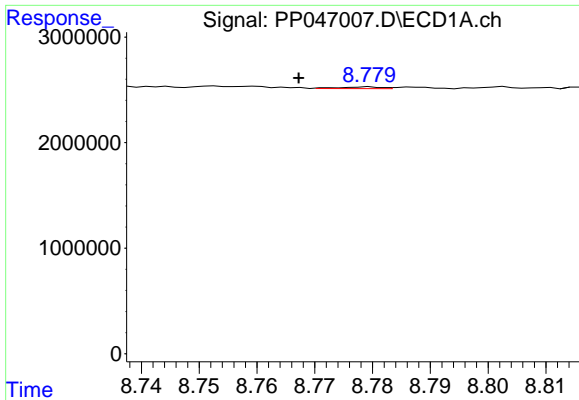
R.T.: 8.538 min  
 Delta R.T.: 0.000 min  
 Response: 16286  
 Conc: 0.07 ng/ml



#42 AR-1268-2

R.T.: 7.336 min  
 Delta R.T.: -0.026 min  
 Response: 1154445  
 Conc: 2.73 ng/ml

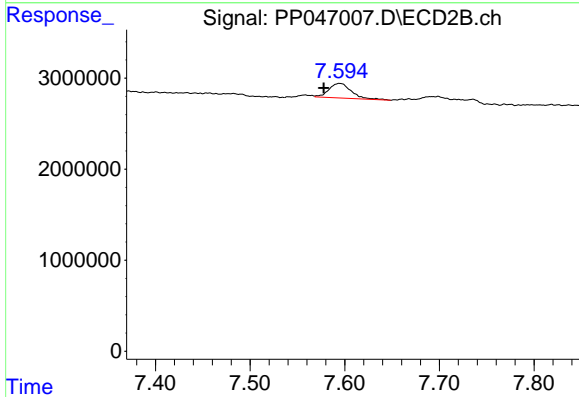




#43 AR-1268-3

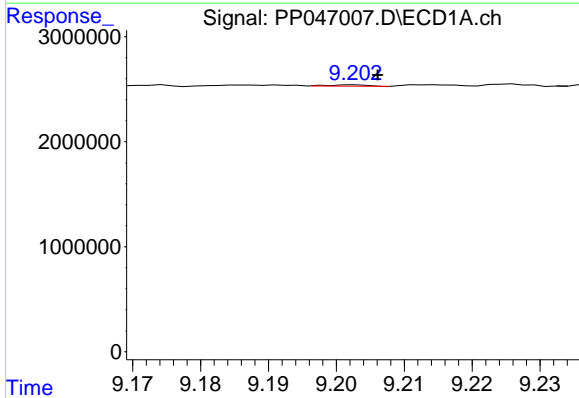
R.T.: 8.779 min  
 Delta R.T.: 0.012 min  
 Response: 82045  
 Conc: 0.43 ng/ml

Instrument :  
 ECD\_P  
 ClientSampleId :  
 AR1242CCC500



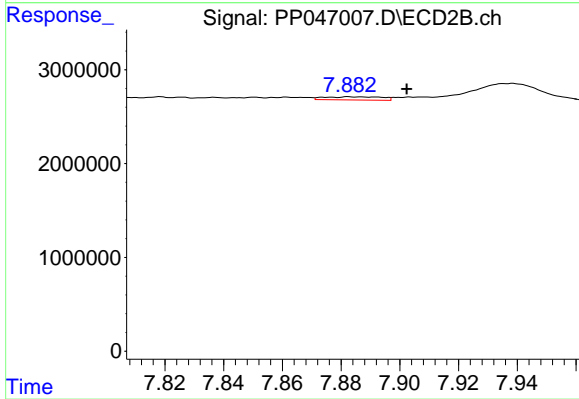
#43 AR-1268-3

R.T.: 7.595 min  
 Delta R.T.: 0.017 min  
 Response: 2639963  
 Conc: 7.46 ng/ml



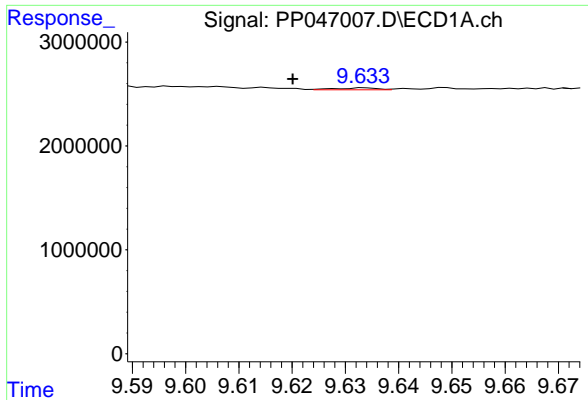
#44 AR-1268-4

R.T.: 9.203 min  
 Delta R.T.: -0.003 min  
 Response: 50219  
 Conc: 0.65 ng/ml



#44 AR-1268-4

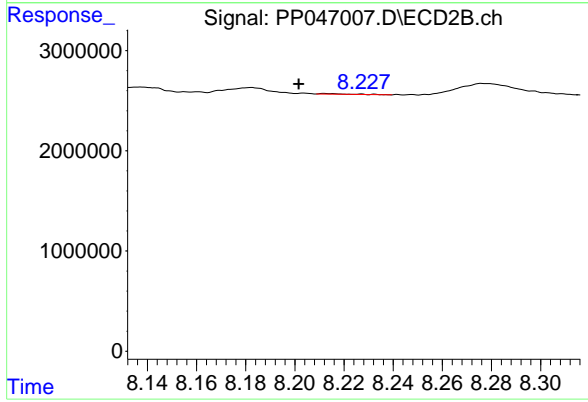
R.T.: 7.883 min  
 Delta R.T.: -0.019 min  
 Response: 464062  
 Conc: 3.16 ng/ml



#45 AR-1268-5

R.T.: 9.634 min  
 Delta R.T.: 0.014 min  
 Response: 98309  
 Conc: 0.18 ng/ml

Instrument :  
 ECD\_P  
 ClientSampleId :  
 AR1242CCC500



#45 AR-1268-5

R.T.: 8.212 min  
 Delta R.T.: 0.011 min  
 Response: 54053  
 Conc: 0.05 ng/ml