

Data Path : Z:\pestpcbsrv\HPCHEM1\ECD\_P\Data\PP050422\  
 Data File : PP047019.D  
 Signal(s) : Signal #1: ECD1A.ch Signal #2: ECD2B.ch  
 Acq On : 05 May 2022 02:15  
 Operator : YP\AJ  
 Sample : N2653-02 10X  
 Misc :  
 ALS Vial : 35 Sample Multiplier: 1

Instrument :  
 ECD\_P  
 ClientSampleId :  
 31592

Integration File signal 1: autoint1.e  
 Integration File signal 2: autoint2.e  
 Quant Time: May 05 05:35:40 2022  
 Quant Method : Z:\pestpcbsrv\HPCHEM1\ECD\_P\methods\PP042222.M  
 Quant Title : GC EXTRACTABLES  
 QLast Update : Tue May 03 11:45:42 2022  
 Response via : Initial Calibration  
 Integrator: ChemStation

Volume Inj. : 2 µl  
 Signal #1 Phase : ZB-MR1 Signal #2 Phase: ZB-MR2  
 Signal #1 Info : 30Mx0.32mmx 0.50µ Signal #2 Info : 30M x 0.32mm x 0.25µm

Compound	RT#1	RT#2	Resp#1	Resp#2	ng/ml	ng/ml
System Monitoring Compounds						
1) SA Tetrachlo...	3.856	3.122	4254263	9704244	1.762	2.958 #
2) SA Decachlor...	9.926f	8.432	4378499	6564613	2.976	2.752
Target Compounds						
3) L1 AR-1016-1	5.091	4.247	1161964	24829	15.431	0.216 #
4) L1 AR-1016-2	5.122	4.284	1153650	575420	10.131	3.391 #
5) L1 AR-1016-3	5.194	4.470f	503814	759912	7.048	8.680
6) L1 AR-1016-4	5.294	4.518	1439985	3098838	23.951	44.511 #
7) L1 AR-1016-5	5.611	4.734	805728	43638	15.218	0.513 #
8) L2 AR-1221-1	4.106	3.354	449001	272431	16.281	6.170 #
9) L2 AR-1221-2	4.175	3.441	235084	199348	11.579	5.902 #
10) L2 AR-1221-3	4.266	3.519	387150	584609	5.939	5.885
11) L3 AR-1232-1	4.266	3.519	387150	584609	7.907	7.706
12) L3 AR-1232-2	4.814	4.284	786250	575420	32.391	7.982 #
13) L3 AR-1232-3	5.147	4.470	1162946	759912	24.622	20.871
14) L3 AR-1232-4	5.314	4.550	2043714	961319	83.992	30.177 #
15) L3 AR-1232-5	5.390f	4.741	1249570	46810	75.101	1.625 #
16) L4 AR-1242-1	5.122	4.247	1153650	24829	18.195	0.252 #
17) L4 AR-1242-2	5.147	4.284	1162946	575420	12.207	3.973 #
18) L4 AR-1242-3	5.194	4.470	503814	759912	8.416	10.225
19) L4 AR-1242-4	5.314	4.550	2043714	961319	40.408	13.460 #
20) L4 AR-1242-5	6.113	5.121	450644	29766	8.943	0.308 #
21) L5 AR-1248-1	5.122	4.247f	1153650	24829	27.603	0.361 #
22) L5 AR-1248-2	5.390f	4.518	1249570	3098838	21.142	33.145 #
23) L5 AR-1248-3	5.629	4.550	1794028	961319	25.684	9.847 #
24) L5 AR-1248-4	6.069	4.734	397937	43638	5.189	0.371 #
25) L5 AR-1248-5	6.113	5.159	450644	116058	5.794	0.952 #
26) L6 AR-1254-1	6.045	5.121	294302	29766	5.067	0.154 #
27) L6 AR-1254-2	6.264	5.263	304026	140573	2.467	0.844 #
28) L6 AR-1254-3	6.675	0.000	384112	0	2.903	N.D. #
29) L6 AR-1254-4	6.989	5.939	1125850	804809	11.327	4.691 #
30) L6 AR-1254-5	7.447	6.398	72253	28760	0.821	0.132 #
31) L7 AR-1260-1	6.834	5.825	503265	897022	5.964	5.637
32) L7 AR-1260-2	7.111	6.044	351990	1378947	3.496	6.779 #
33) L7 AR-1260-3	7.507	6.182	471138	195673	5.816	1.146 #
34) L7 AR-1260-4	7.757	6.699	111322	573878	1.398	3.948 #
35) L7 AR-1260-5	8.114	6.964	17951	290813	0.113	0.828 #
36) L8 AR-1262-1	7.507f	0.000	471138	0	3.898	N.D. #
37) L8 AR-1262-2	8.114	6.718	17951	231640	0.093	1.198 #
38) L8 AR-1262-3	8.442	7.297	61838	549536	0.461	3.385 #
39) L8 AR-1262-4	8.539	7.354	61202	247247	0.972	0.863
40) L8 AR-1262-5	9.209	7.904	26722	140788	0.387	1.073 #
41) L9 AR-1268-1	8.442	7.297	61838	549536	0.257	1.147 #

Data Path : Z:\pestpcbsrv\HPCHEM1\ECD\_P\Data\PP050422\  
 Data File : PP047019.D  
 Signal(s) : Signal #1: ECD1A.ch Signal #2: ECD2B.ch  
 Acq On : 05 May 2022 02:15  
 Operator : YP\AJ  
 Sample : N2653-02 10X  
 Misc :  
 ALS Vial : 35 Sample Multiplier: 1

Instrument :  
 ECD\_P  
 ClientSampleId :  
 31592

Integration File signal 1: autoint1.e  
 Integration File signal 2: autoint2.e  
 Quant Time: May 05 05:35:40 2022  
 Quant Method : Z:\pestpcbsrv\HPCHEM1\ECD\_P\methods\PP042222.M  
 Quant Title : GC EXTRACTABLES  
 QLast Update : Tue May 03 11:45:42 2022  
 Response via : Initial Calibration  
 Integrator: ChemStation

Volume Inj. : 2 µl  
 Signal #1 Phase : ZB-MR1 Signal #2 Phase: ZB-MR2  
 Signal #1 Info : 30Mx0.32mmx 0.50µ Signal #2 Info : 30M x 0.32mm x 0.25µm

	Compound	RT#1	RT#2	Resp#1	Resp#2	ng/ml	ng/ml
42)	L9 AR-1268-2	8.539	7.367	61202	462732	0.276	1.093 #
43)	L9 AR-1268-3	8.769	7.584	45925	63966	0.239	0.181
44)	L9 AR-1268-4	9.209	7.904	26722	140788	0.346	0.957 #
45)	L9 AR-1268-5	9.611	8.227f	177460	29997	0.317	0.029 #

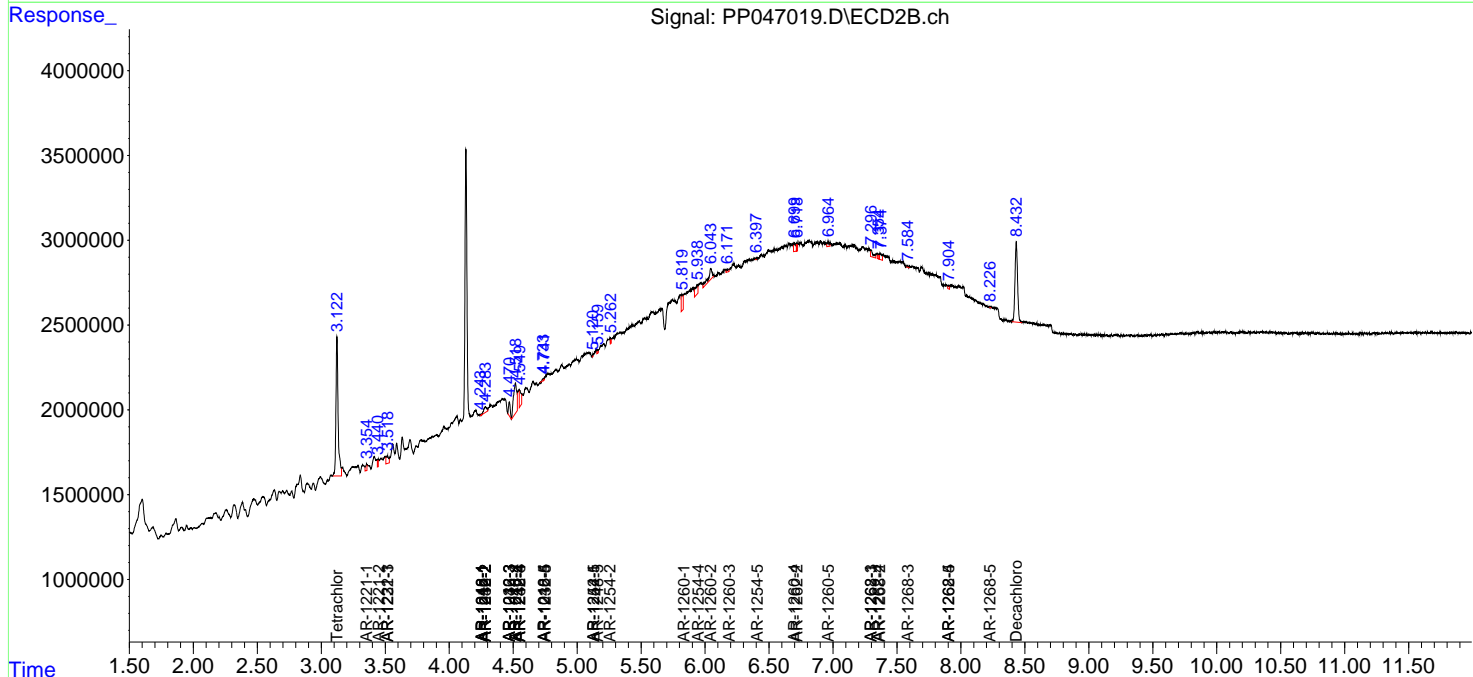
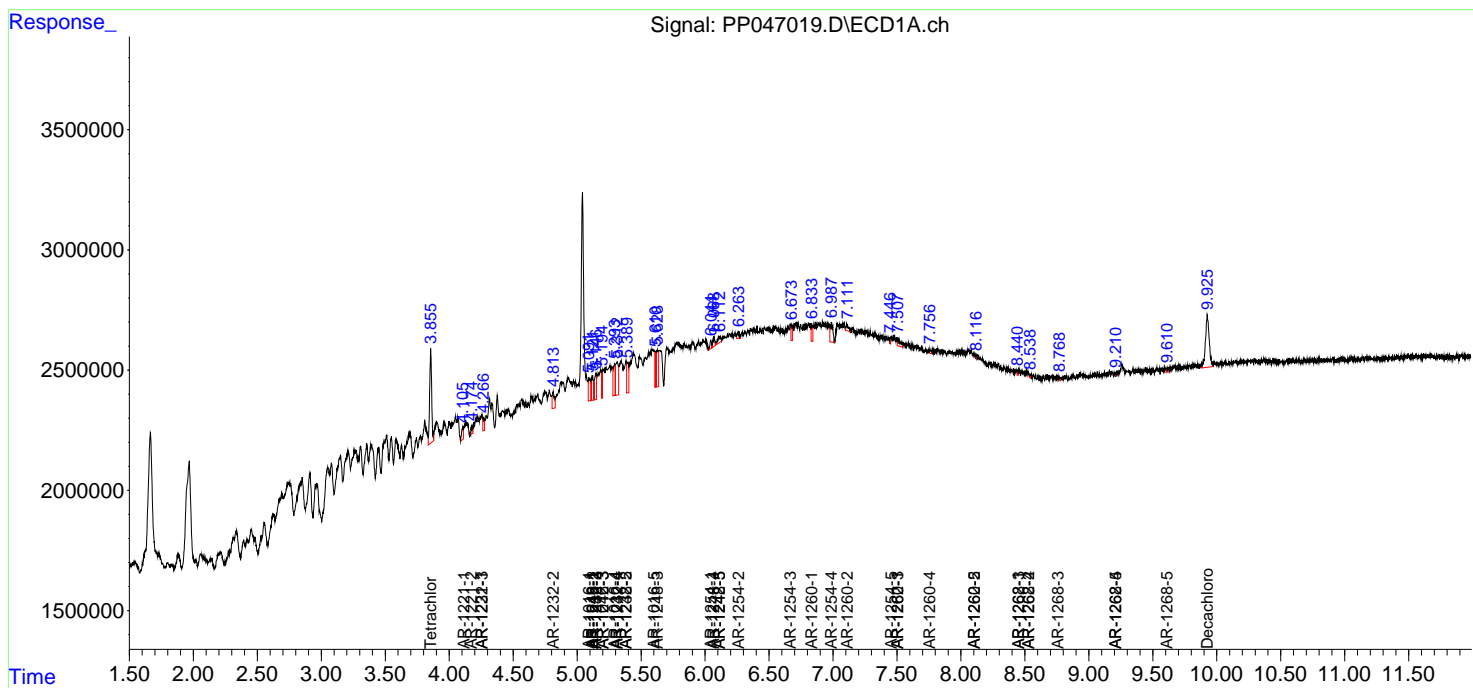
(f)=RT Delta > 1/2 Window (#)=Amounts differ by > 25% (m)=manual int.

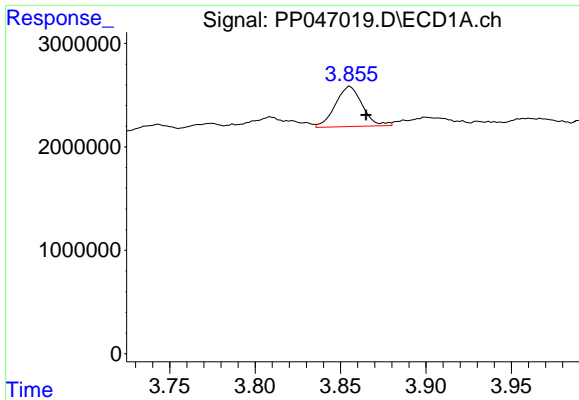
Data Path : Z:\pestpcbsrv\HPCHEM1\ECD\_P\Data\PP050422\  
 Data File : PP047019.D  
 Signal(s) : Signal #1: ECD1A.ch Signal #2: ECD2B.ch  
 Acq On : 05 May 2022 02:15  
 Operator : YP\AJ  
 Sample : N2653-02 10X  
 Misc :  
 ALS Vial : 35 Sample Multiplier: 1

Instrument :  
 ECD\_P  
 ClientSampleId :  
 31592

Integration File signal 1: autoint1.e  
 Integration File signal 2: autoint2.e  
 Quant Time: May 05 05:35:40 2022  
 Quant Method : Z:\pestpcbsrv\HPCHEM1\ECD\_P\methods\PP042222.M  
 Quant Title : GC EXTRACTABLES  
 QLast Update : Tue May 03 11:45:42 2022  
 Response via : Initial Calibration  
 Integrator: ChemStation

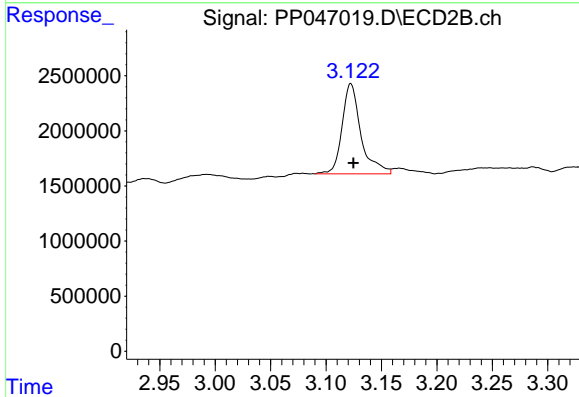
Volume Inj. : 2 µl  
 Signal #1 Phase : ZB-MR1 Signal #2 Phase: ZB-MR2  
 Signal #1 Info : 30Mx0.32mmx 0.50µ Signal #2 Info : 30M x 0.32mm x 0.25µm



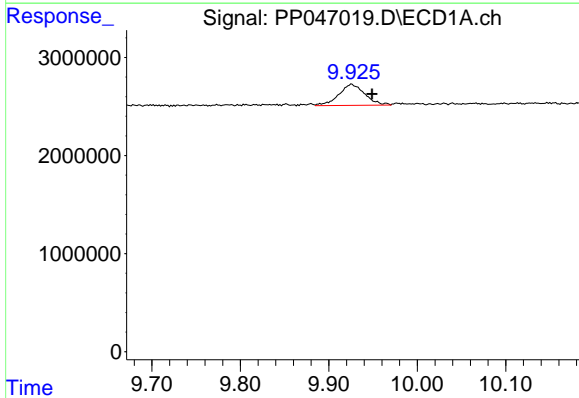


#1 Tetrachloro-m-xylene  
 R.T.: 3.856 min  
 Delta R.T.: -0.009 min  
 Response: 4254263  
 Conc: 1.76 ng/ml

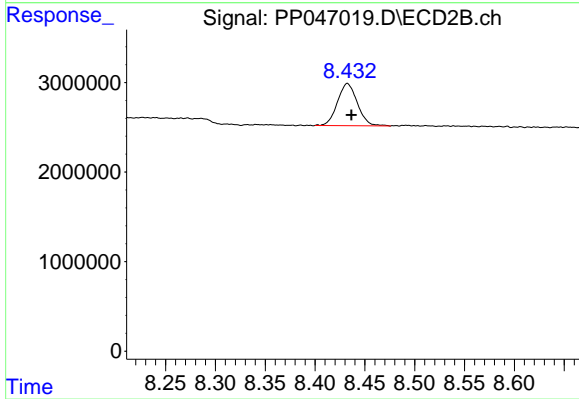
Instrument :  
 ECD\_P  
 ClientSampleId :  
 31592



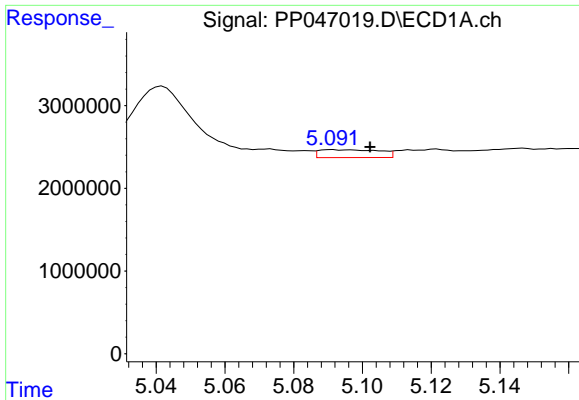
#1 Tetrachloro-m-xylene  
 R.T.: 3.122 min  
 Delta R.T.: -0.002 min  
 Response: 9704244  
 Conc: 2.96 ng/ml



#2 Decachlorobiphenyl  
 R.T.: 9.926 min  
 Delta R.T.: -0.023 min  
 Response: 4378499  
 Conc: 2.98 ng/ml



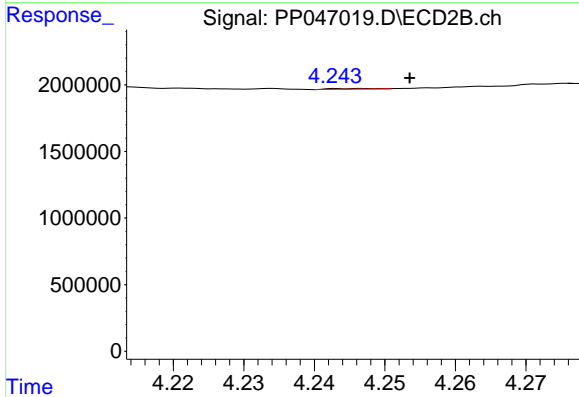
#2 Decachlorobiphenyl  
 R.T.: 8.432 min  
 Delta R.T.: -0.004 min  
 Response: 6564613  
 Conc: 2.75 ng/ml



#3 AR-1016-1

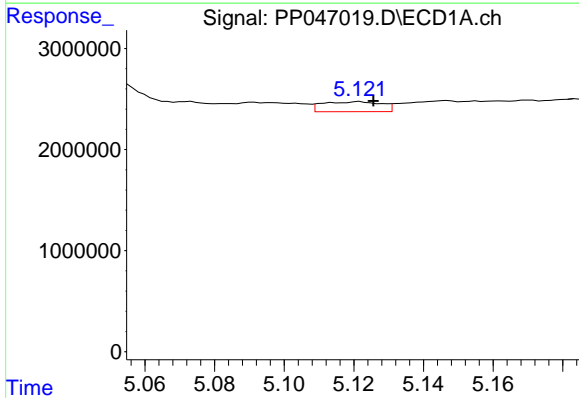
R.T.: 5.091 min  
 Delta R.T.: -0.011 min  
 Response: 1161964  
 Conc: 15.43 ng/ml

Instrument :  
 ECD\_P  
 ClientSampleId :  
 31592



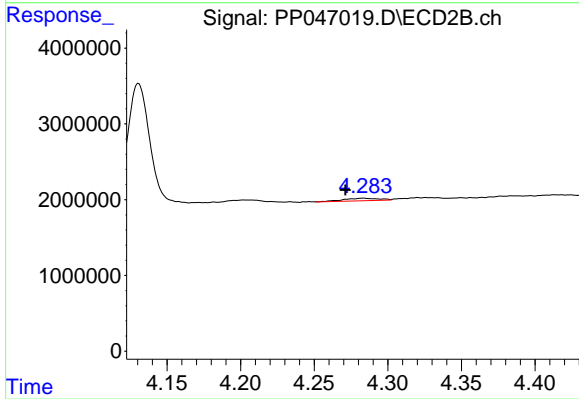
#3 AR-1016-1

R.T.: 4.247 min  
 Delta R.T.: -0.007 min  
 Response: 24829  
 Conc: 0.22 ng/ml



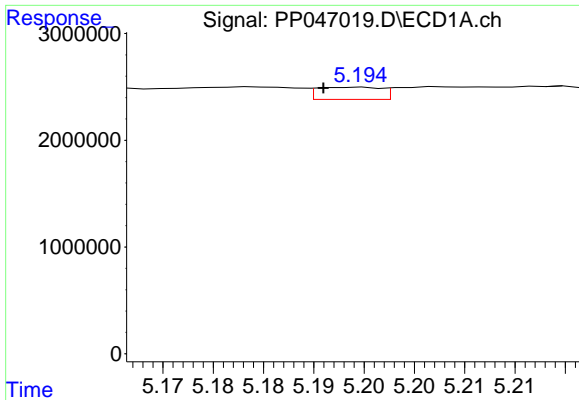
#4 AR-1016-2

R.T.: 5.122 min  
 Delta R.T.: -0.004 min  
 Response: 1153650  
 Conc: 10.13 ng/ml



#4 AR-1016-2

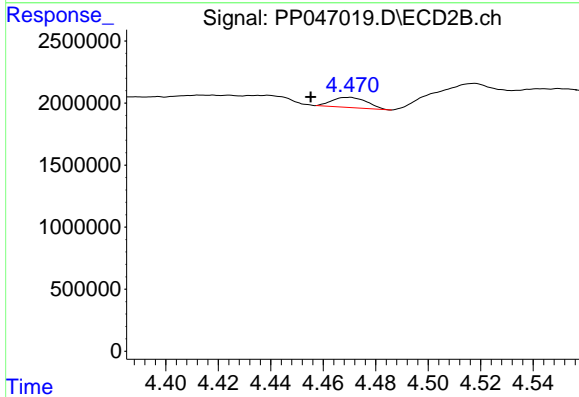
R.T.: 4.284 min  
 Delta R.T.: 0.012 min  
 Response: 575420  
 Conc: 3.39 ng/ml



#5 AR-1016-3

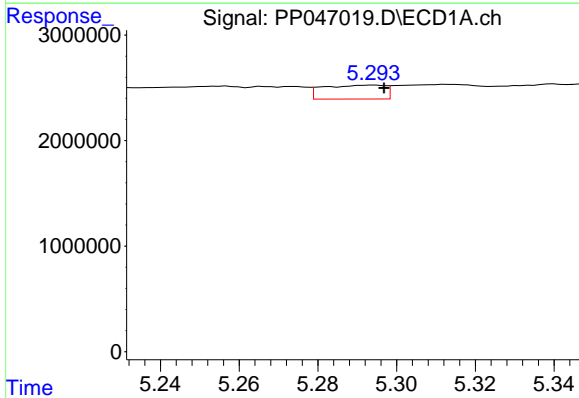
R.T.: 5.194 min  
 Delta R.T.: 0.003 min  
 Response: 503814  
 Conc: 7.05 ng/ml

Instrument :  
 ECD\_P  
 ClientSampleId :  
 31592



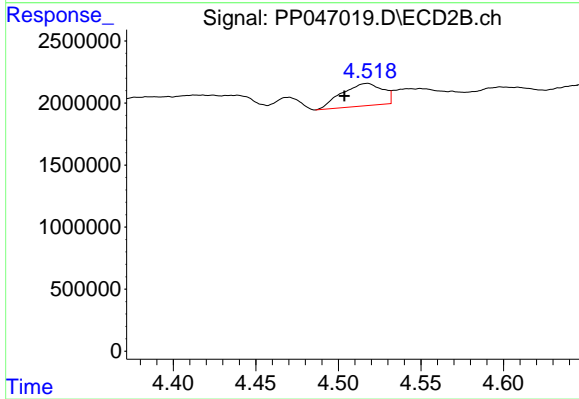
#5 AR-1016-3

R.T.: 4.470 min  
 Delta R.T.: 0.015 min  
 Response: 759912  
 Conc: 8.68 ng/ml



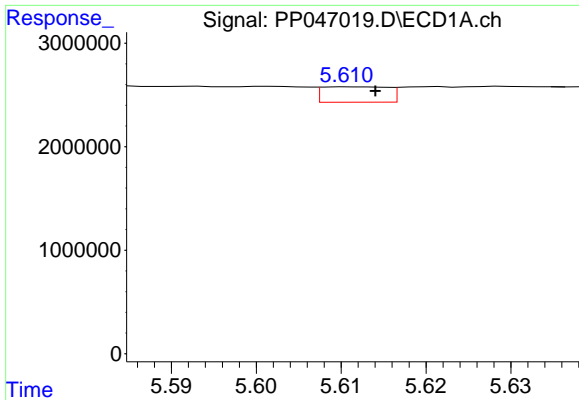
#6 AR-1016-4

R.T.: 5.294 min  
 Delta R.T.: -0.003 min  
 Response: 1439985  
 Conc: 23.95 ng/ml



#6 AR-1016-4

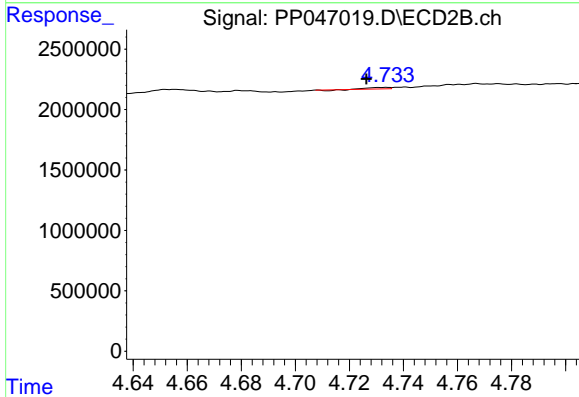
R.T.: 4.518 min  
 Delta R.T.: 0.014 min  
 Response: 3098838  
 Conc: 44.51 ng/ml



#7 AR-1016-5

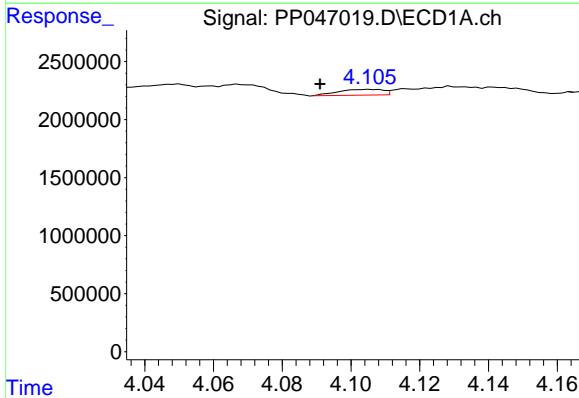
R.T.: 5.611 min  
 Delta R.T.: -0.003 min  
 Response: 805728  
 Conc: 15.22 ng/ml

Instrument :  
 ECD\_P  
 ClientSampleId :  
 31592



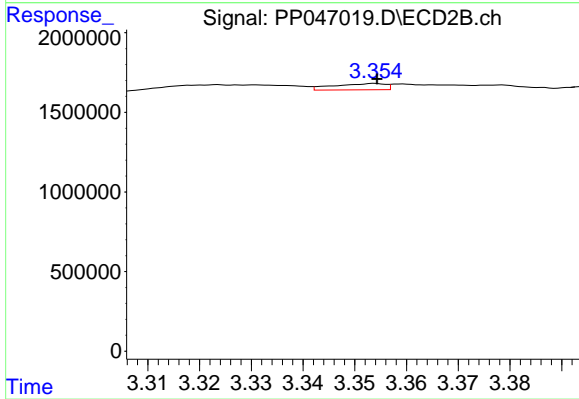
#7 AR-1016-5

R.T.: 4.734 min  
 Delta R.T.: 0.007 min  
 Response: 43638  
 Conc: 0.51 ng/ml



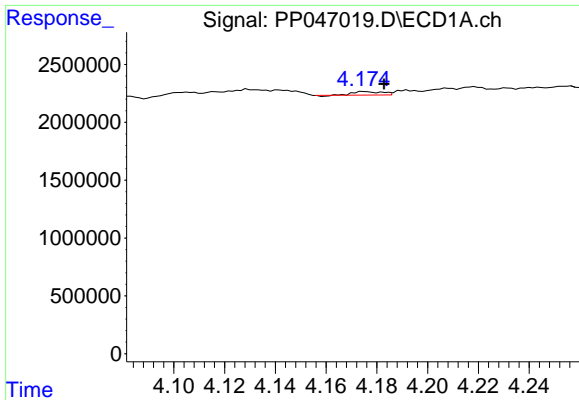
#8 AR-1221-1

R.T.: 4.106 min  
 Delta R.T.: 0.014 min  
 Response: 449001  
 Conc: 16.28 ng/ml



#8 AR-1221-1

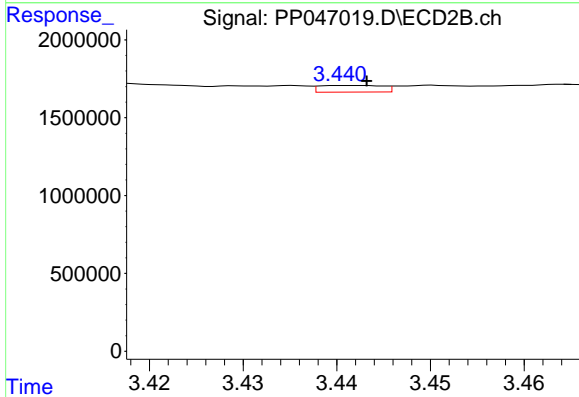
R.T.: 3.354 min  
 Delta R.T.: 0.000 min  
 Response: 272431  
 Conc: 6.17 ng/ml



#9 AR-1221-2

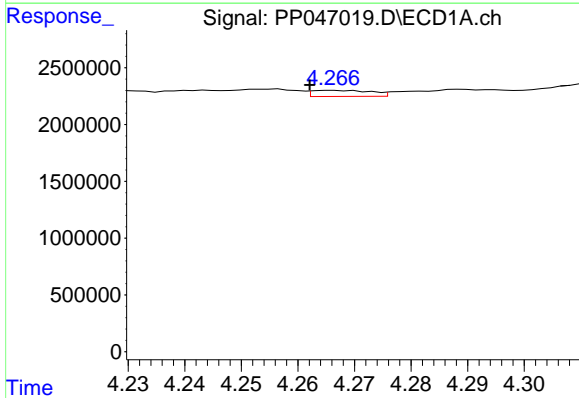
R.T.: 4.175 min  
 Delta R.T.: -0.008 min  
 Response: 235084  
 Conc: 11.58 ng/ml

Instrument :  
 ECD\_P  
 ClientSampleId :  
 31592



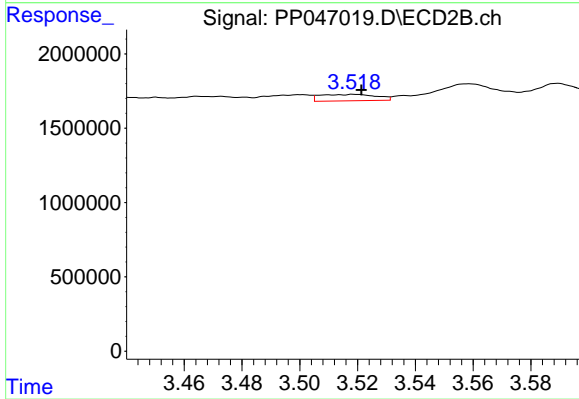
#9 AR-1221-2

R.T.: 3.441 min  
 Delta R.T.: -0.002 min  
 Response: 199348  
 Conc: 5.90 ng/ml



#10 AR-1221-3

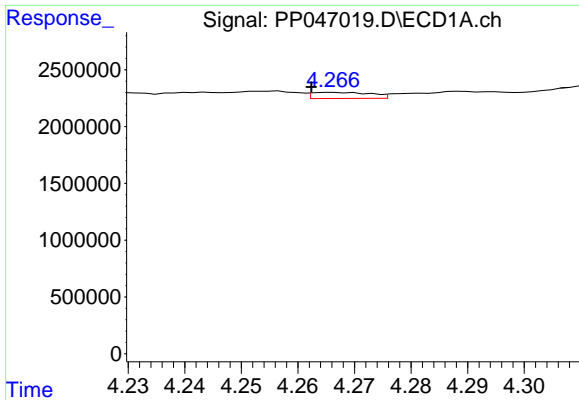
R.T.: 4.266 min  
 Delta R.T.: 0.004 min  
 Response: 387150  
 Conc: 5.94 ng/ml



#10 AR-1221-3

R.T.: 3.519 min  
 Delta R.T.: -0.003 min  
 Response: 584609  
 Conc: 5.89 ng/ml

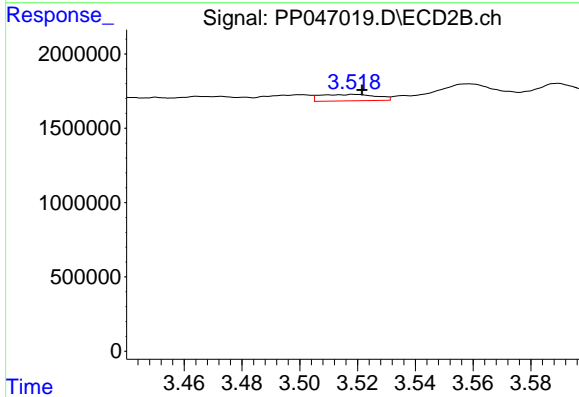




#11 AR-1232-1

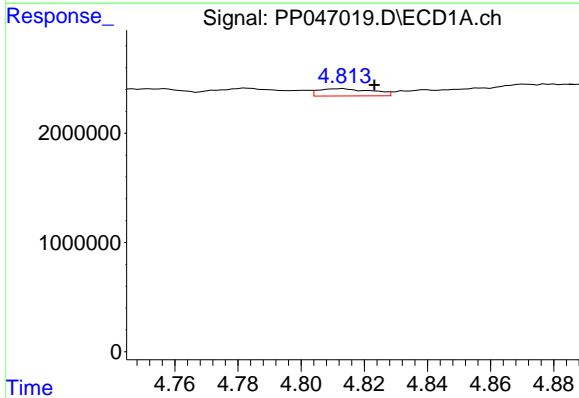
R.T.: 4.266 min  
 Delta R.T.: 0.004 min  
 Response: 387150  
 Conc: 7.91 ng/ml

Instrument :  
 ECD\_P  
 ClientSampleId :  
 31592



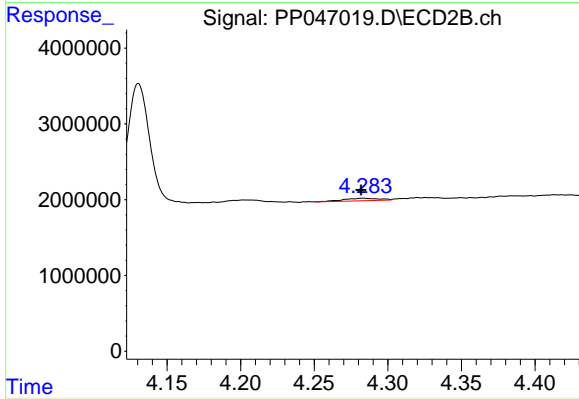
#11 AR-1232-1

R.T.: 3.519 min  
 Delta R.T.: -0.003 min  
 Response: 584609  
 Conc: 7.71 ng/ml



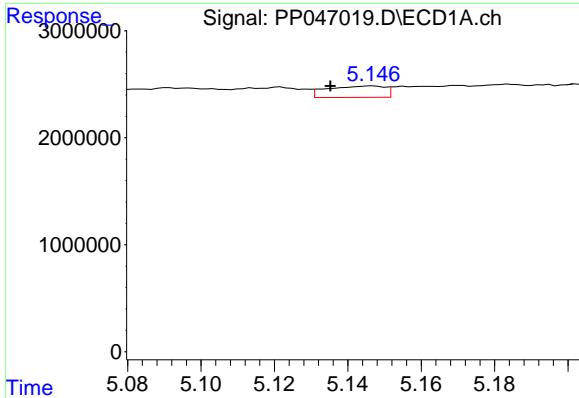
#12 AR-1232-2

R.T.: 4.814 min  
 Delta R.T.: -0.010 min  
 Response: 786250  
 Conc: 32.39 ng/ml



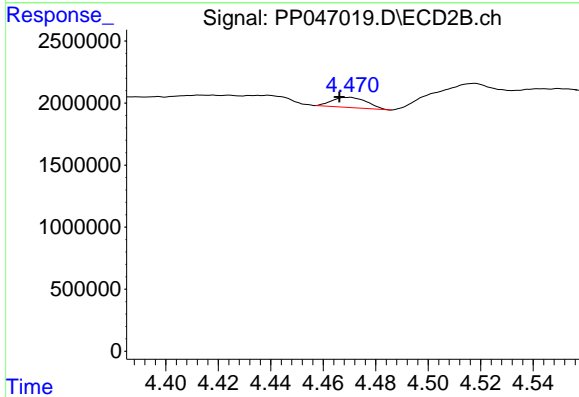
#12 AR-1232-2

R.T.: 4.284 min  
 Delta R.T.: 0.002 min  
 Response: 575420  
 Conc: 7.98 ng/ml

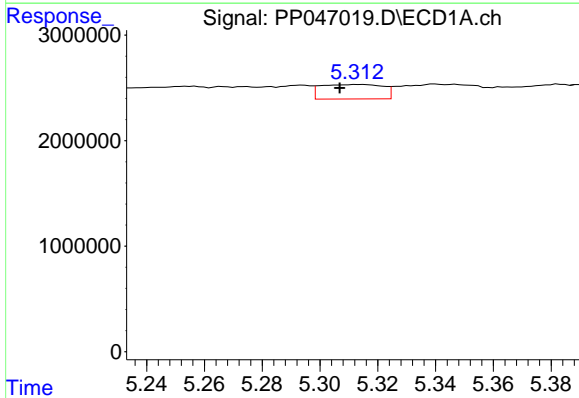


#13 AR-1232-3  
 R.T.: 5.147 min  
 Delta R.T.: 0.012 min  
 Response: 1162946  
 Conc: 24.62 ng/ml

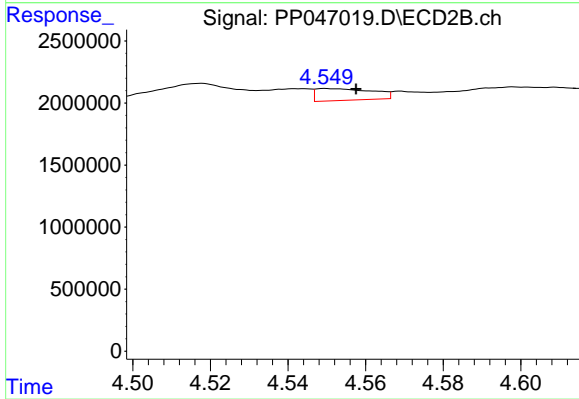
Instrument :  
 ECD\_P  
 ClientSampleId :  
 31592



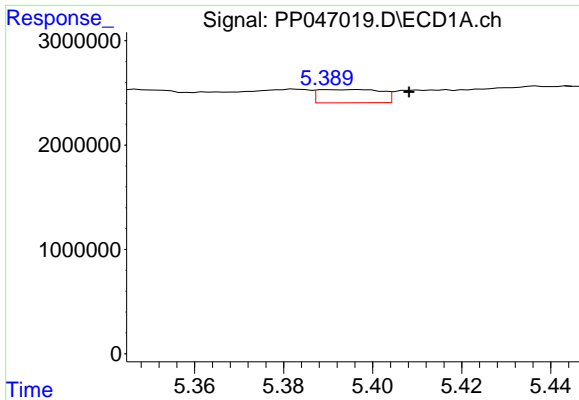
#13 AR-1232-3  
 R.T.: 4.470 min  
 Delta R.T.: 0.004 min  
 Response: 759912  
 Conc: 20.87 ng/ml



#14 AR-1232-4  
 R.T.: 5.314 min  
 Delta R.T.: 0.007 min  
 Response: 2043714  
 Conc: 83.99 ng/ml



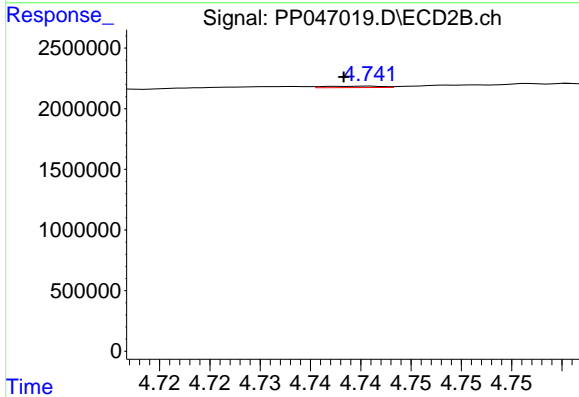
#14 AR-1232-4  
 R.T.: 4.550 min  
 Delta R.T.: -0.008 min  
 Response: 961319  
 Conc: 30.18 ng/ml



#15 AR-1232-5

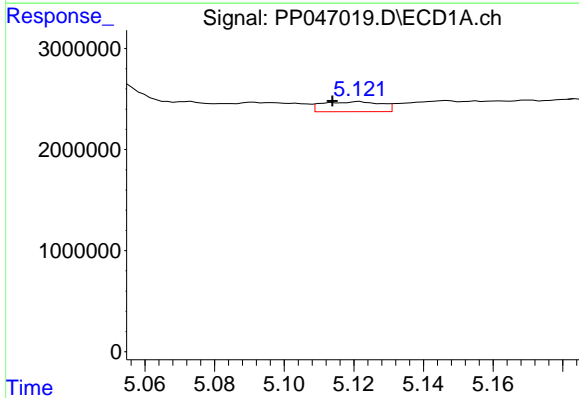
R.T.: 5.390 min  
 Delta R.T.: -0.018 min  
 Response: 1249570  
 Conc: 75.10 ng/ml

Instrument :  
 ECD\_P  
 ClientSampleId :  
 31592



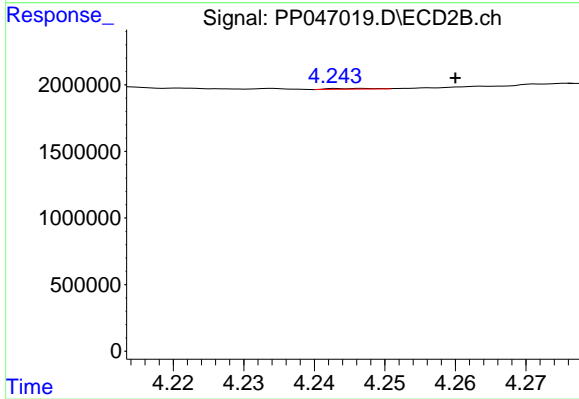
#15 AR-1232-5

R.T.: 4.741 min  
 Delta R.T.: 0.003 min  
 Response: 46810  
 Conc: 1.63 ng/ml



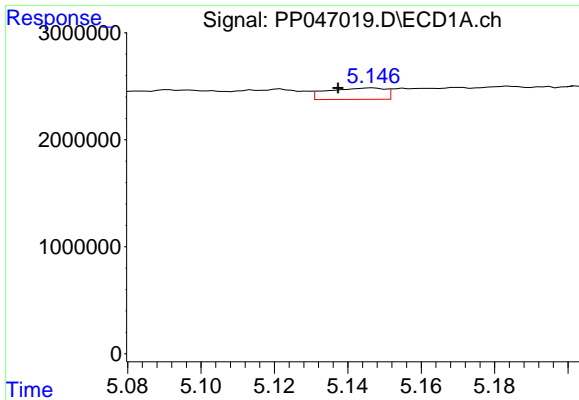
#16 AR-1242-1

R.T.: 5.122 min  
 Delta R.T.: 0.008 min  
 Response: 1153650  
 Conc: 18.20 ng/ml



#16 AR-1242-1

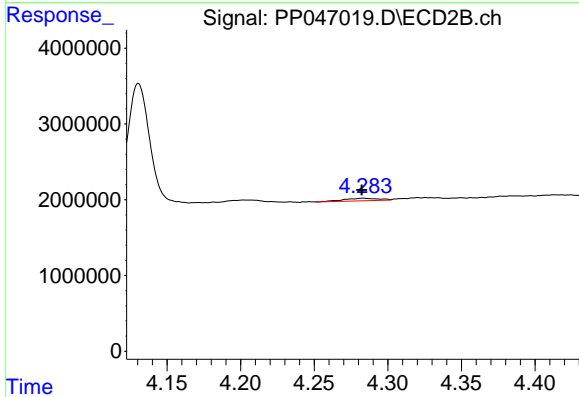
R.T.: 4.247 min  
 Delta R.T.: -0.013 min  
 Response: 24829  
 Conc: 0.25 ng/ml



#17 AR-1242-2

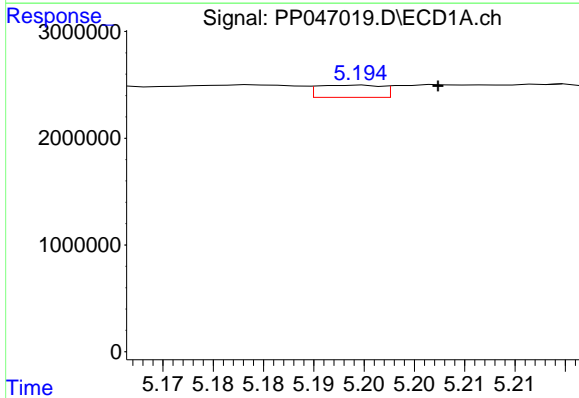
R.T.: 5.147 min  
 Delta R.T.: 0.009 min  
 Response: 1162946  
 Conc: 12.21 ng/ml

Instrument :  
 ECD\_P  
 ClientSampleId :  
 31592



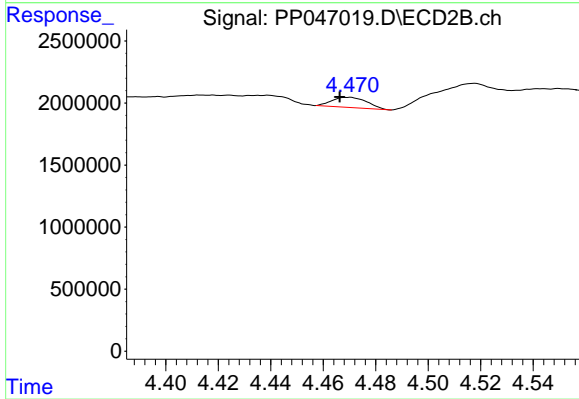
#17 AR-1242-2

R.T.: 4.284 min  
 Delta R.T.: 0.001 min  
 Response: 575420  
 Conc: 3.97 ng/ml



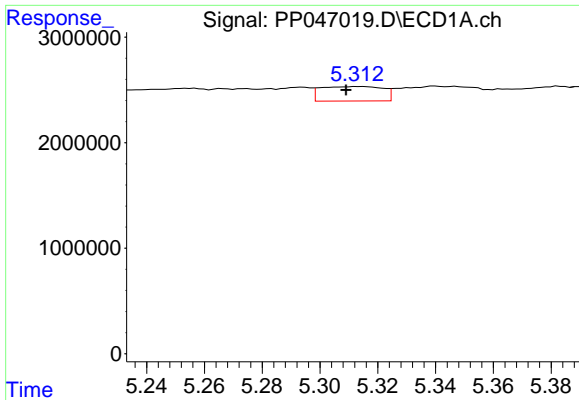
#18 AR-1242-3

R.T.: 5.194 min  
 Delta R.T.: -0.008 min  
 Response: 503814  
 Conc: 8.42 ng/ml



#18 AR-1242-3

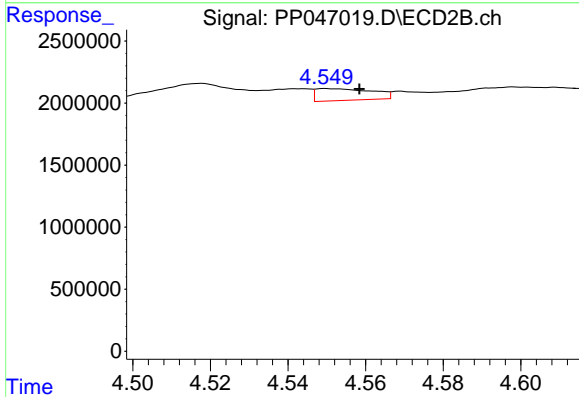
R.T.: 4.470 min  
 Delta R.T.: 0.004 min  
 Response: 759912  
 Conc: 10.22 ng/ml



#19 AR-1242-4

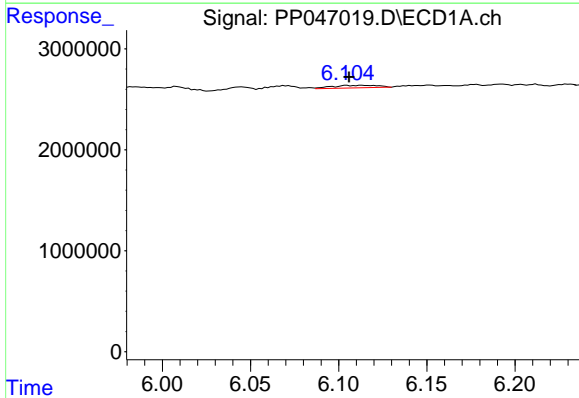
R.T.: 5.314 min  
 Delta R.T.: 0.005 min  
 Response: 2043714  
 Conc: 40.41 ng/ml

Instrument :  
 ECD\_P  
 ClientSampleId :  
 31592



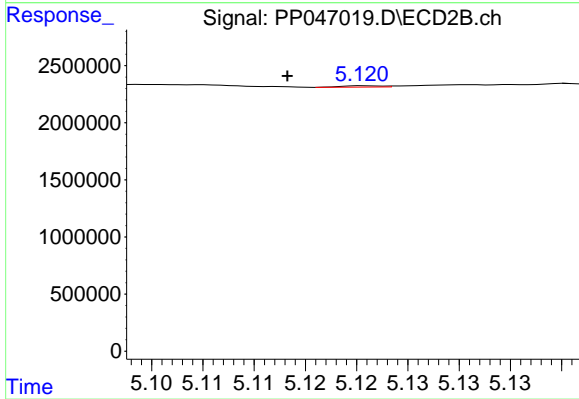
#19 AR-1242-4

R.T.: 4.550 min  
 Delta R.T.: -0.009 min  
 Response: 961319  
 Conc: 13.46 ng/ml



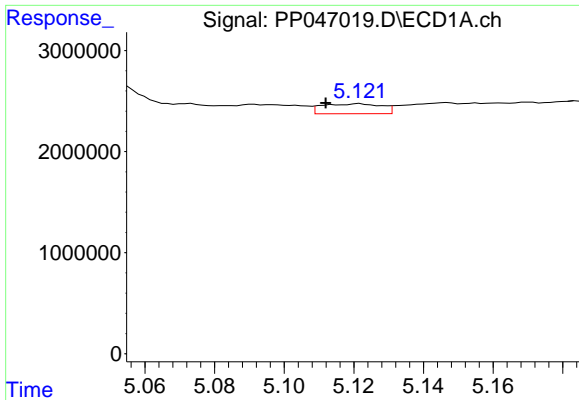
#20 AR-1242-5

R.T.: 6.113 min  
 Delta R.T.: 0.007 min  
 Response: 450644  
 Conc: 8.94 ng/ml



#20 AR-1242-5

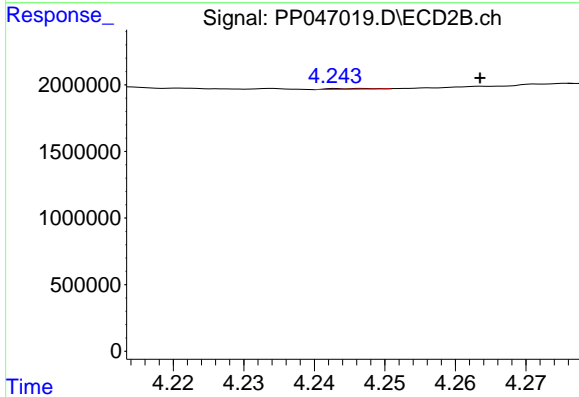
R.T.: 5.121 min  
 Delta R.T.: 0.008 min  
 Response: 29766  
 Conc: 0.31 ng/ml



#21 AR-1248-1

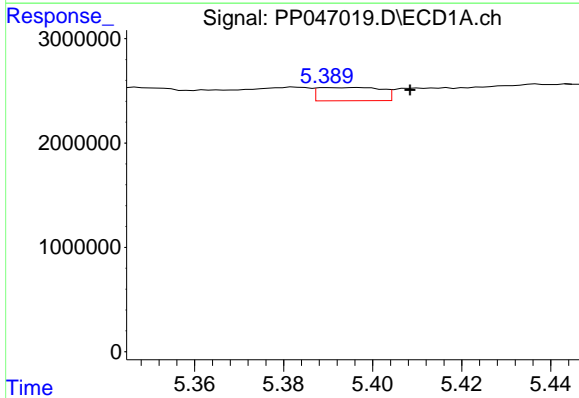
R.T.: 5.122 min  
 Delta R.T.: 0.010 min  
 Response: 1153650  
 Conc: 27.60 ng/ml

Instrument :  
 ECD\_P  
 ClientSampleId :  
 31592



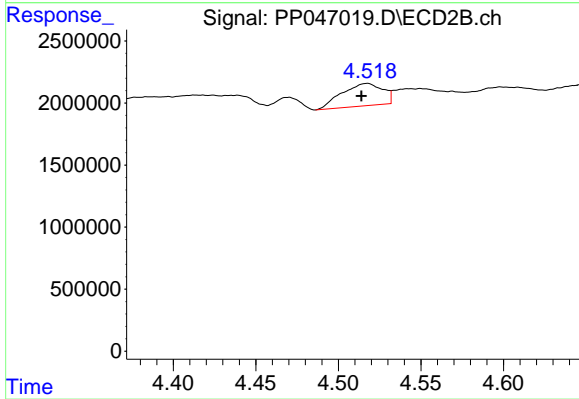
#21 AR-1248-1

R.T.: 4.247 min  
 Delta R.T.: -0.017 min  
 Response: 24829  
 Conc: 0.36 ng/ml



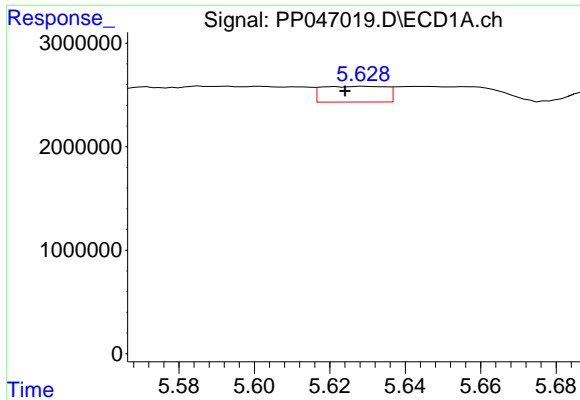
#22 AR-1248-2

R.T.: 5.390 min  
 Delta R.T.: -0.018 min  
 Response: 1249570  
 Conc: 21.14 ng/ml



#22 AR-1248-2

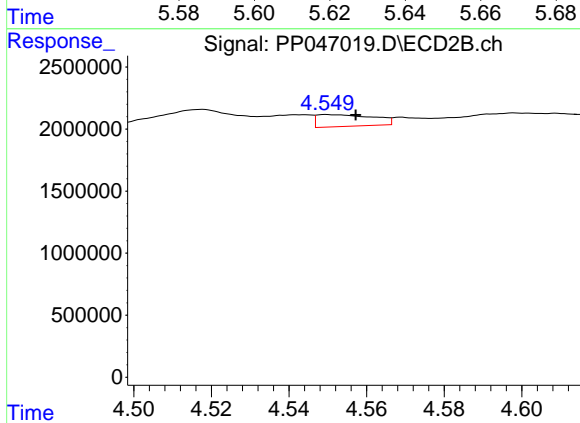
R.T.: 4.518 min  
 Delta R.T.: 0.004 min  
 Response: 3098838  
 Conc: 33.15 ng/ml



#23 AR-1248-3

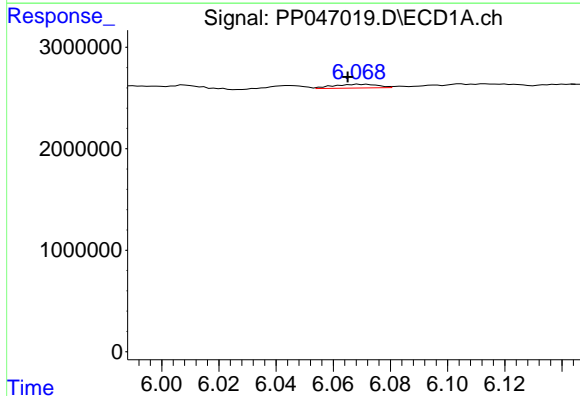
R.T.: 5.629 min  
 Delta R.T.: 0.005 min  
 Response: 1794028  
 Conc: 25.68 ng/ml

Instrument :  
 ECD\_P  
 ClientSampleId :  
 31592



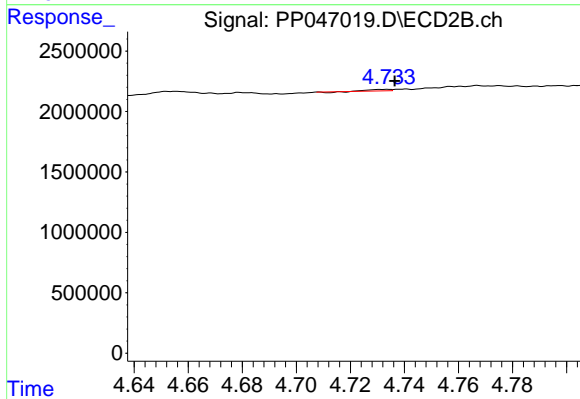
#23 AR-1248-3

R.T.: 4.550 min  
 Delta R.T.: -0.007 min  
 Response: 961319  
 Conc: 9.85 ng/ml



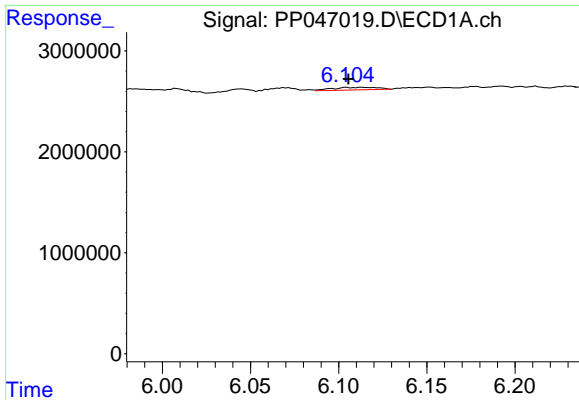
#24 AR-1248-4

R.T.: 6.069 min  
 Delta R.T.: 0.004 min  
 Response: 397937  
 Conc: 5.19 ng/ml



#24 AR-1248-4

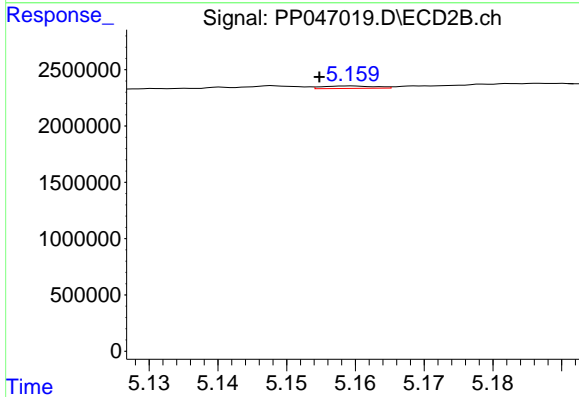
R.T.: 4.734 min  
 Delta R.T.: -0.003 min  
 Response: 43638  
 Conc: 0.37 ng/ml



#25 AR-1248-5

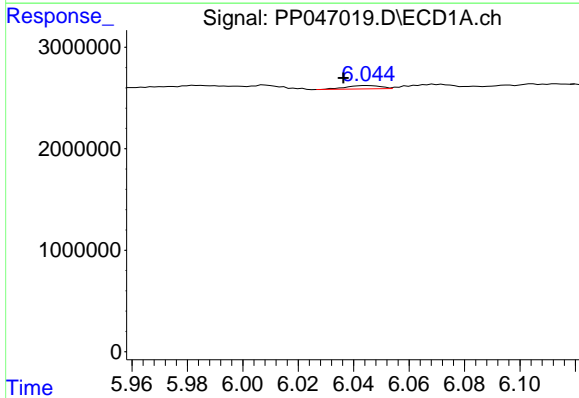
R.T.: 6.113 min  
 Delta R.T.: 0.008 min  
 Response: 450644  
 Conc: 5.79 ng/ml

Instrument :  
 ECD\_P  
 ClientSampleId :  
 31592



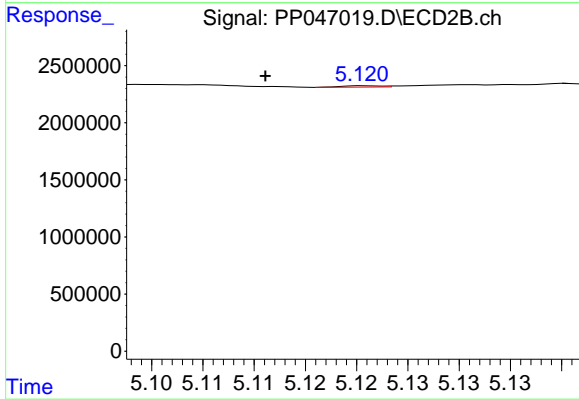
#25 AR-1248-5

R.T.: 5.159 min  
 Delta R.T.: 0.005 min  
 Response: 116058  
 Conc: 0.95 ng/ml



#26 AR-1254-1

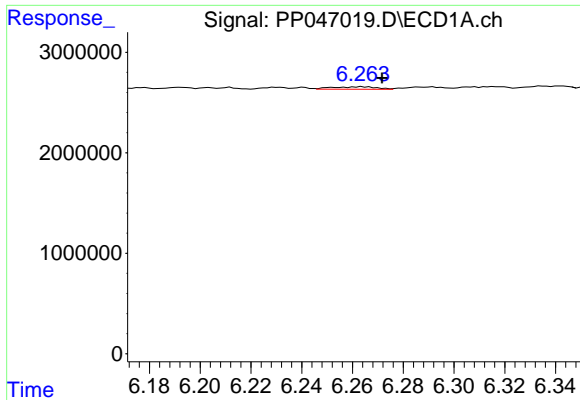
R.T.: 6.045 min  
 Delta R.T.: 0.009 min  
 Response: 294302  
 Conc: 5.07 ng/ml



#26 AR-1254-1

R.T.: 5.121 min  
 Delta R.T.: 0.010 min  
 Response: 29766  
 Conc: 0.15 ng/ml

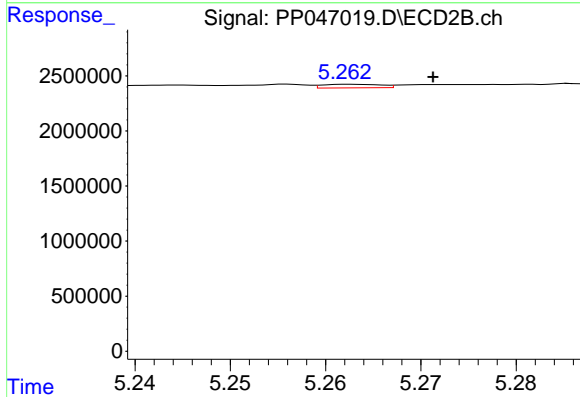




#27 AR-1254-2

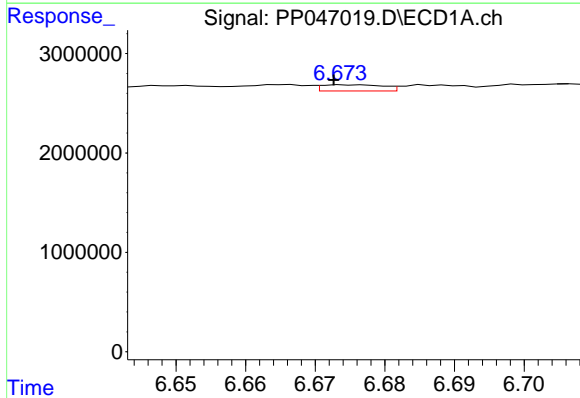
R.T.: 6.264 min  
 Delta R.T.: -0.008 min  
 Response: 304026  
 Conc: 2.47 ng/ml

Instrument :  
 ECD\_P  
 ClientSampleId :  
 31592



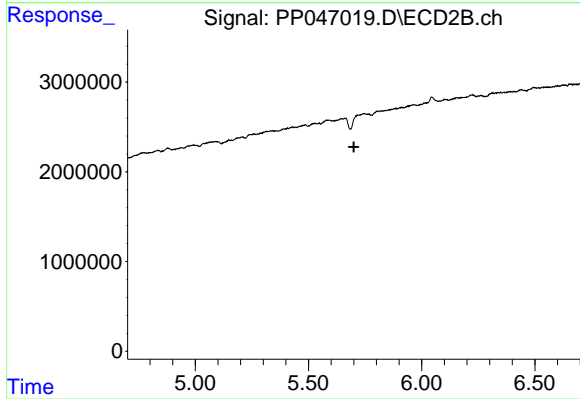
#27 AR-1254-2

R.T.: 5.263 min  
 Delta R.T.: -0.009 min  
 Response: 140573  
 Conc: 0.84 ng/ml



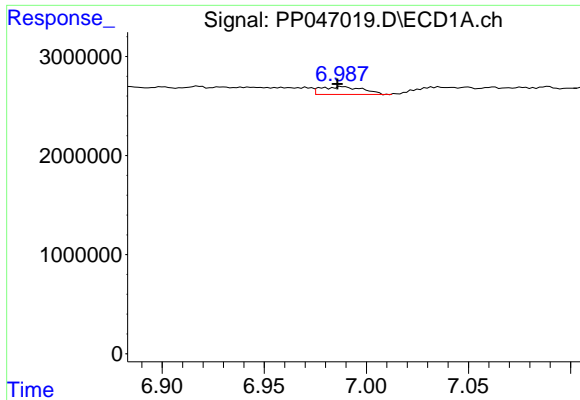
#28 AR-1254-3

R.T.: 6.675 min  
 Delta R.T.: 0.002 min  
 Response: 384112  
 Conc: 2.90 ng/ml



#28 AR-1254-3

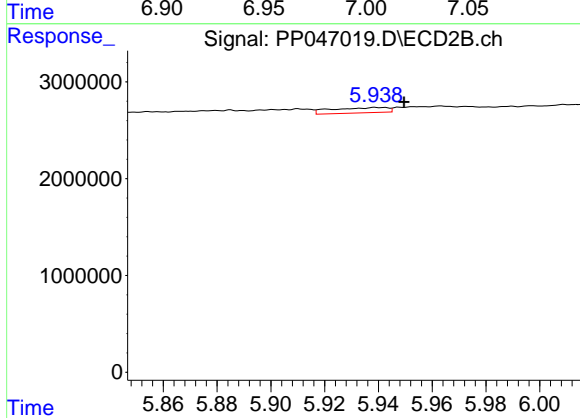
R.T.: 0.000 min  
 Exp R.T.: 5.700 min  
 Response: 0  
 Conc: N.D.



#29 AR-1254-4

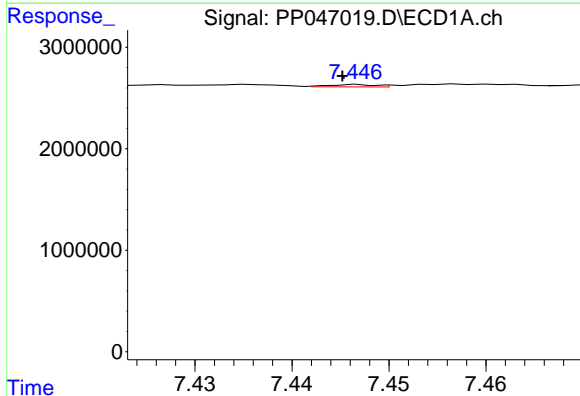
R.T.: 6.989 min  
 Delta R.T.: 0.003 min  
 Response: 1125850  
 Conc: 11.33 ng/ml

Instrument :  
 ECD\_P  
 ClientSampleId :  
 31592



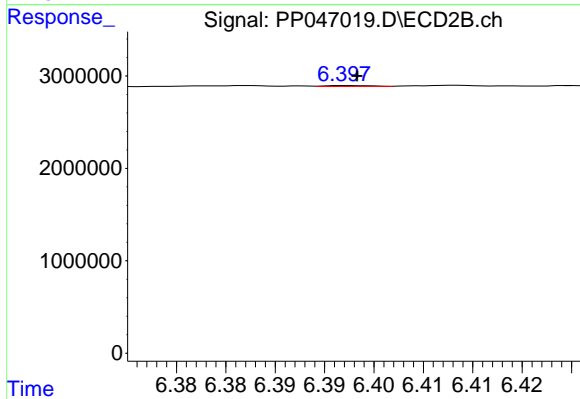
#29 AR-1254-4

R.T.: 5.939 min  
 Delta R.T.: -0.010 min  
 Response: 804809  
 Conc: 4.69 ng/ml



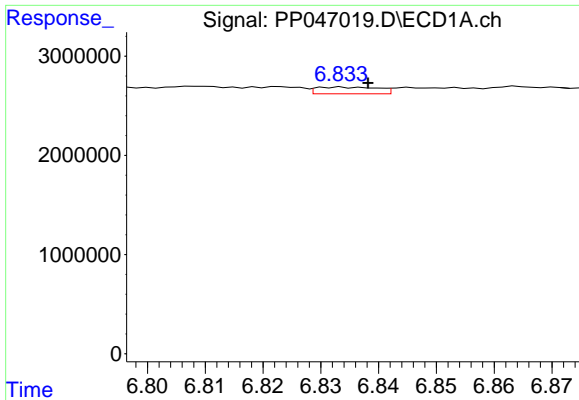
#30 AR-1254-5

R.T.: 7.447 min  
 Delta R.T.: 0.002 min  
 Response: 72253  
 Conc: 0.82 ng/ml



#30 AR-1254-5

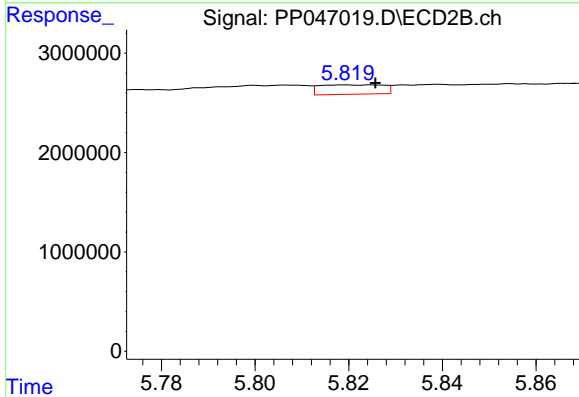
R.T.: 6.398 min  
 Delta R.T.: 0.000 min  
 Response: 28760  
 Conc: 0.13 ng/ml



#31 AR-1260-1

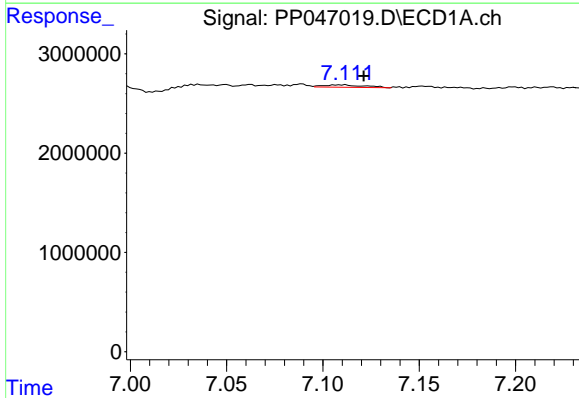
R.T.: 6.834 min  
 Delta R.T.: -0.005 min  
 Response: 503265  
 Conc: 5.96 ng/ml

Instrument :  
 ECD\_P  
 ClientSampleId :  
 31592



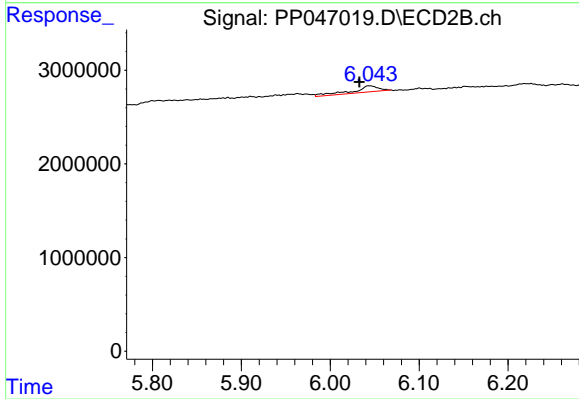
#31 AR-1260-1

R.T.: 5.825 min  
 Delta R.T.: 0.000 min  
 Response: 897022  
 Conc: 5.64 ng/ml



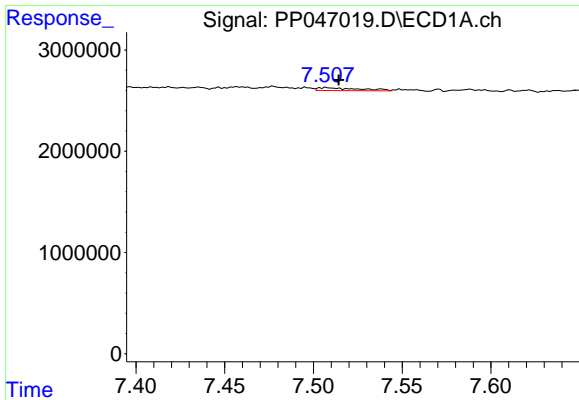
#32 AR-1260-2

R.T.: 7.111 min  
 Delta R.T.: -0.010 min  
 Response: 351990  
 Conc: 3.50 ng/ml



#32 AR-1260-2

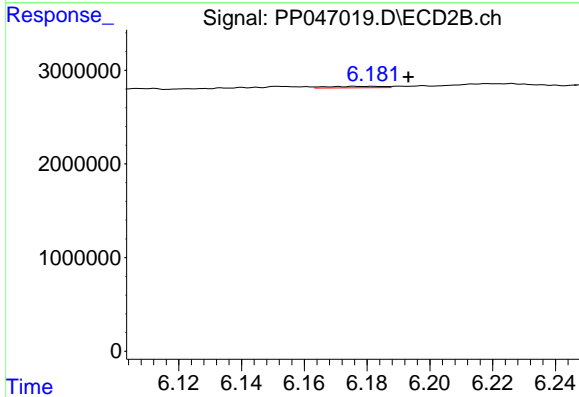
R.T.: 6.044 min  
 Delta R.T.: 0.011 min  
 Response: 1378947  
 Conc: 6.78 ng/ml



#33 AR-1260-3

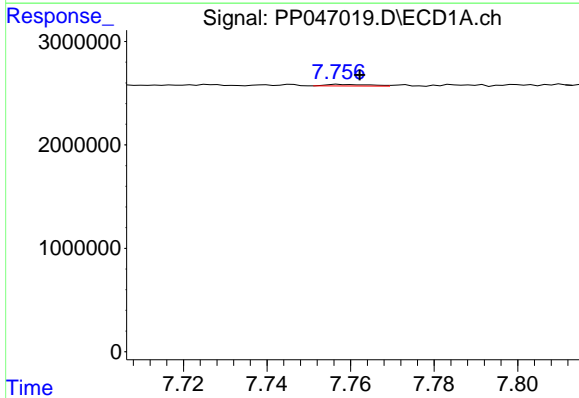
R.T.: 7.507 min  
 Delta R.T.: -0.007 min  
 Response: 471138  
 Conc: 5.82 ng/ml

Instrument :  
 ECD\_P  
 ClientSampleId :  
 31592



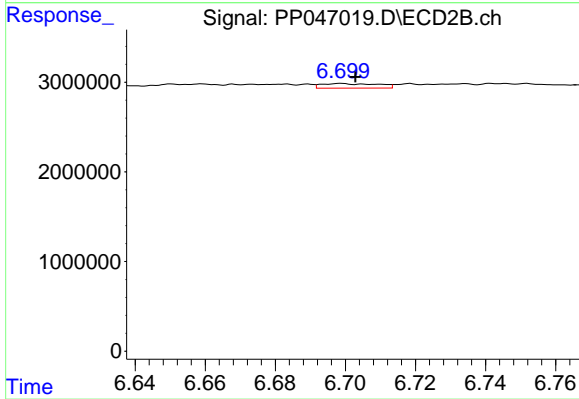
#33 AR-1260-3

R.T.: 6.182 min  
 Delta R.T.: -0.011 min  
 Response: 195673  
 Conc: 1.15 ng/ml



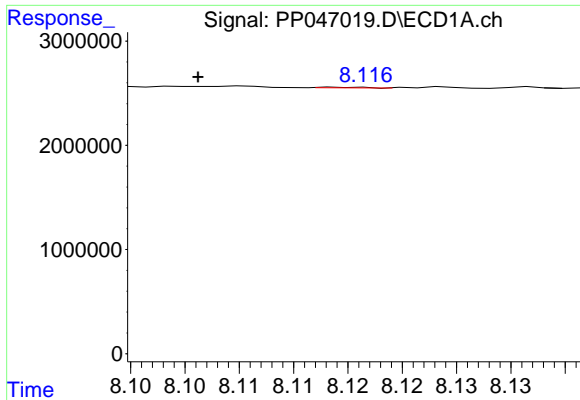
#34 AR-1260-4

R.T.: 7.757 min  
 Delta R.T.: -0.005 min  
 Response: 111322  
 Conc: 1.40 ng/ml



#34 AR-1260-4

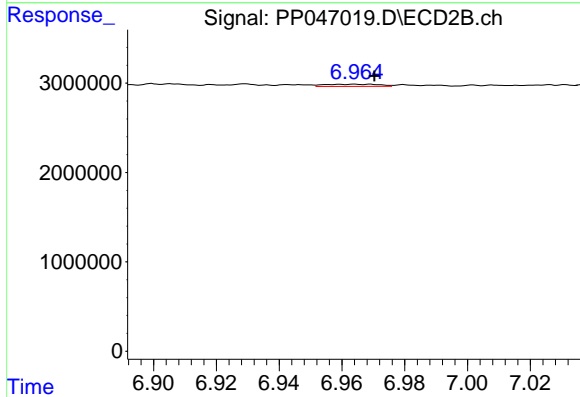
R.T.: 6.699 min  
 Delta R.T.: -0.004 min  
 Response: 573878  
 Conc: 3.95 ng/ml



#35 AR-1260-5

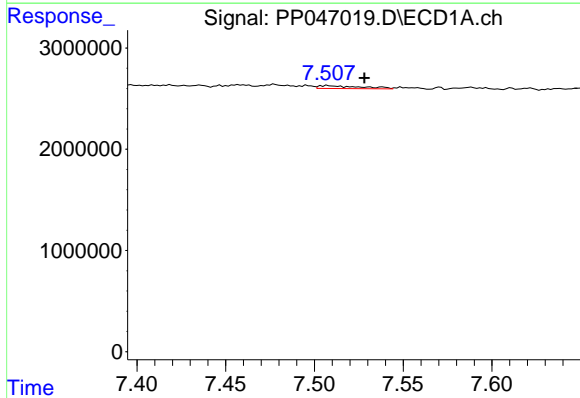
R.T.: 8.114 min  
 Delta R.T.: 0.013 min  
 Response: 17951  
 Conc: 0.11 ng/ml

Instrument :  
 ECD\_P  
 ClientSampleId :  
 31592



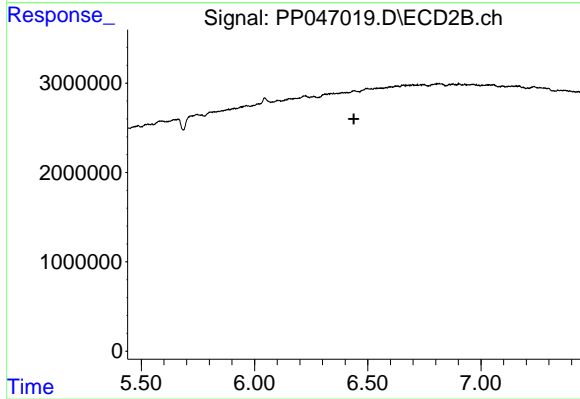
#35 AR-1260-5

R.T.: 6.964 min  
 Delta R.T.: -0.006 min  
 Response: 290813  
 Conc: 0.83 ng/ml



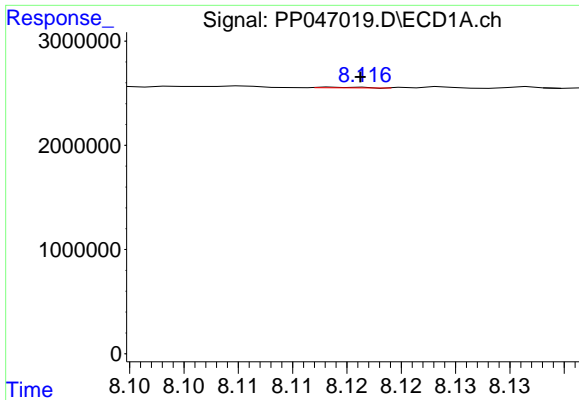
#36 AR-1262-1

R.T.: 7.507 min  
 Delta R.T.: -0.021 min  
 Response: 471138  
 Conc: 3.90 ng/ml



#36 AR-1262-1

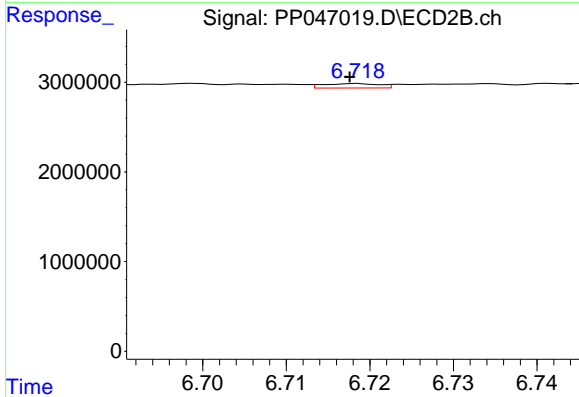
R.T.: 0.000 min  
 Exp R.T. : 6.439 min  
 Response: 0  
 Conc: N.D.



#37 AR-1262-2

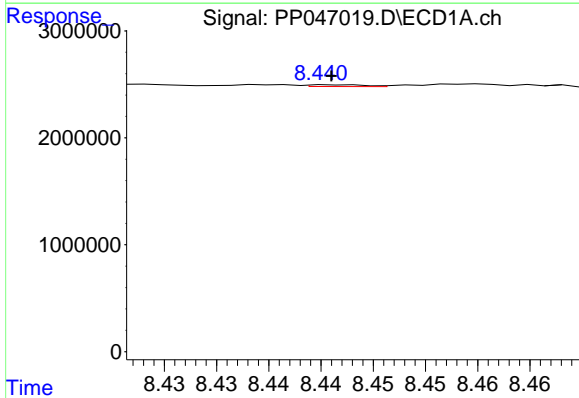
R.T.: 8.114 min  
 Delta R.T.: -0.002 min  
 Response: 17951  
 Conc: 0.09 ng/ml

Instrument :  
 ECD\_P  
 ClientSampleId :  
 31592



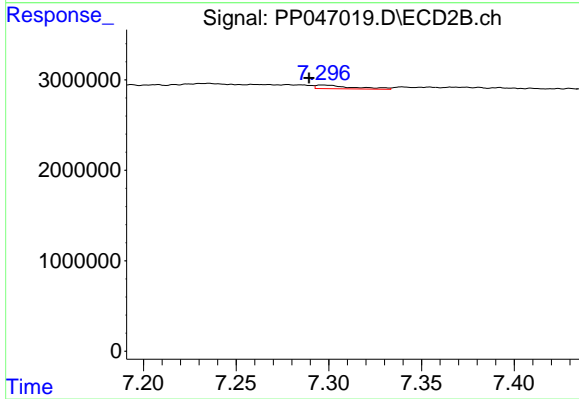
#37 AR-1262-2

R.T.: 6.718 min  
 Delta R.T.: 0.000 min  
 Response: 231640  
 Conc: 1.20 ng/ml



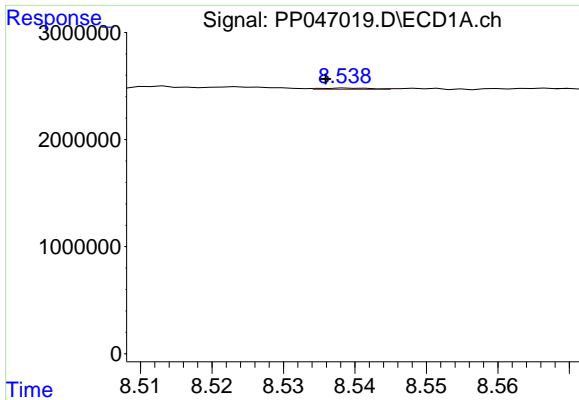
#38 AR-1262-3

R.T.: 8.442 min  
 Delta R.T.: 0.000 min  
 Response: 61838  
 Conc: 0.46 ng/ml



#38 AR-1262-3

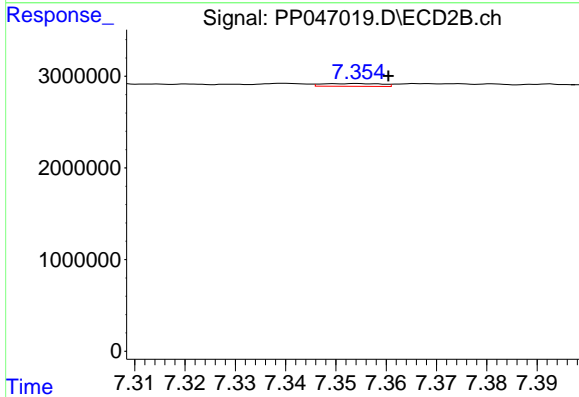
R.T.: 7.297 min  
 Delta R.T.: 0.007 min  
 Response: 549536  
 Conc: 3.38 ng/ml



#39 AR-1262-4

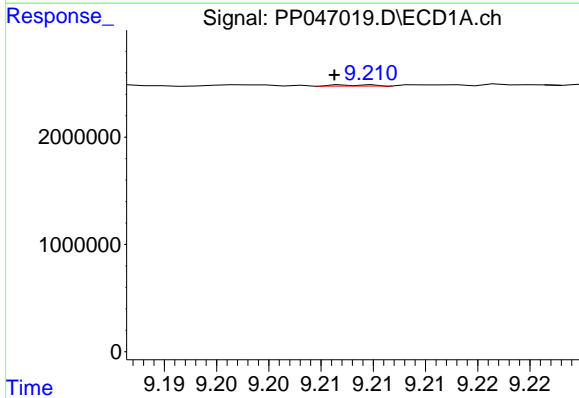
R.T.: 8.539 min  
 Delta R.T.: 0.004 min  
 Response: 61202  
 Conc: 0.97 ng/ml

Instrument :  
 ECD\_P  
 ClientSampleId :  
 31592



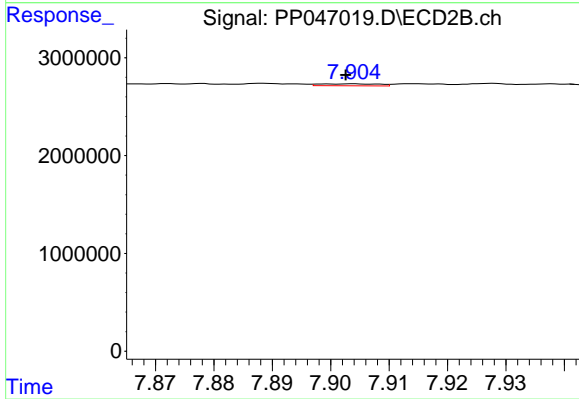
#39 AR-1262-4

R.T.: 7.354 min  
 Delta R.T.: -0.006 min  
 Response: 247247  
 Conc: 0.86 ng/ml



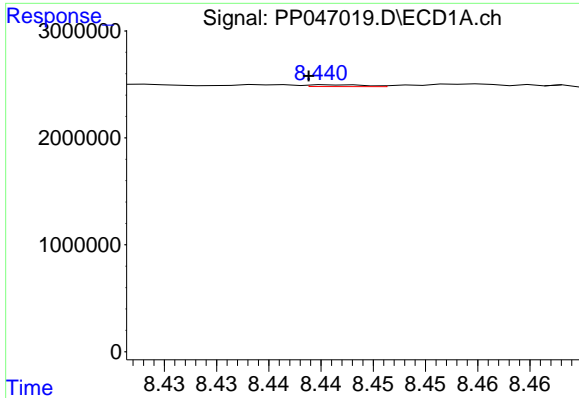
#40 AR-1262-5

R.T.: 9.209 min  
 Delta R.T.: 0.002 min  
 Response: 26722  
 Conc: 0.39 ng/ml



#40 AR-1262-5

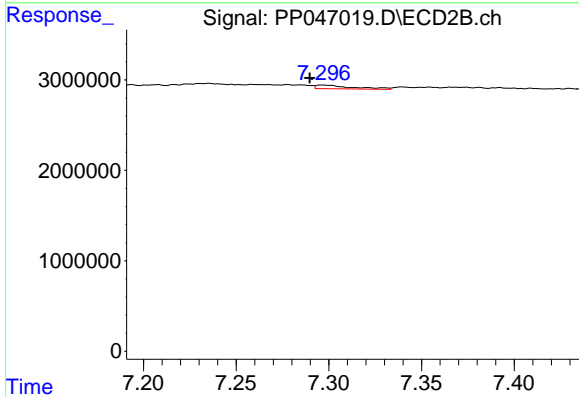
R.T.: 7.904 min  
 Delta R.T.: 0.001 min  
 Response: 140788  
 Conc: 1.07 ng/ml



#41 AR-1268-1

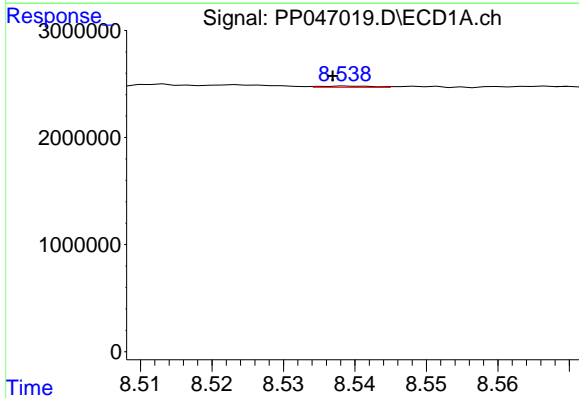
R.T.: 8.442 min  
 Delta R.T.: 0.003 min  
 Response: 61838  
 Conc: 0.26 ng/ml

Instrument :  
 ECD\_P  
 ClientSampleId :  
 31592



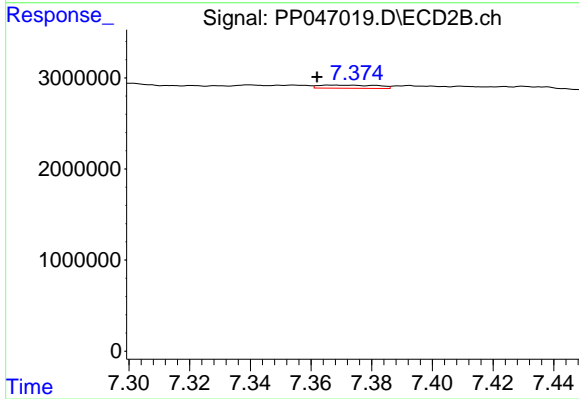
#41 AR-1268-1

R.T.: 7.297 min  
 Delta R.T.: 0.007 min  
 Response: 549536  
 Conc: 1.15 ng/ml



#42 AR-1268-2

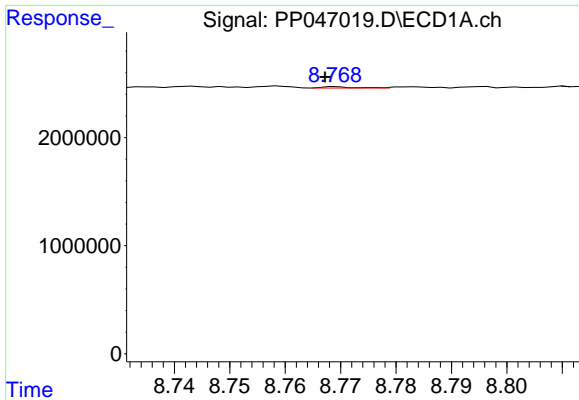
R.T.: 8.539 min  
 Delta R.T.: 0.003 min  
 Response: 61202  
 Conc: 0.28 ng/ml



#42 AR-1268-2

R.T.: 7.367 min  
 Delta R.T.: 0.005 min  
 Response: 462732  
 Conc: 1.09 ng/ml

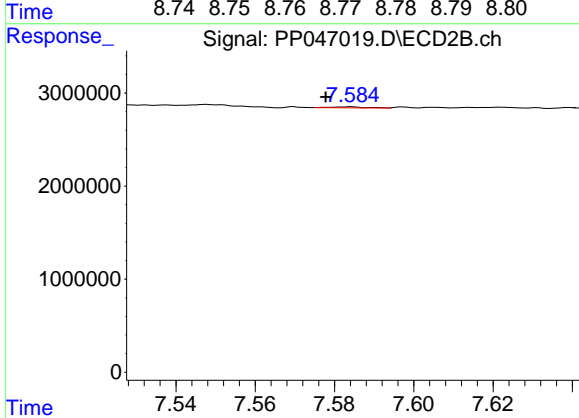




#43 AR-1268-3

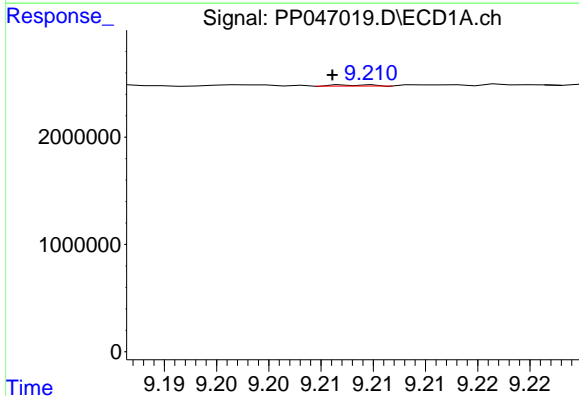
R.T.: 8.769 min  
 Delta R.T.: 0.002 min  
 Response: 45925  
 Conc: 0.24 ng/ml

Instrument :  
 ECD\_P  
 ClientSampleId :  
 31592



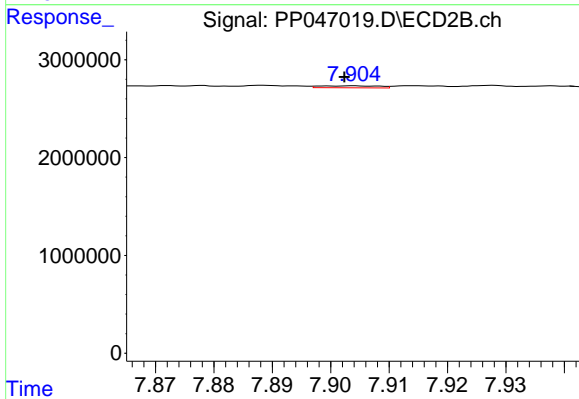
#43 AR-1268-3

R.T.: 7.584 min  
 Delta R.T.: 0.006 min  
 Response: 63966  
 Conc: 0.18 ng/ml



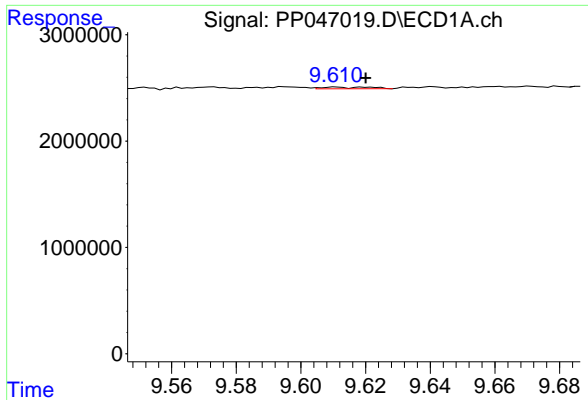
#44 AR-1268-4

R.T.: 9.209 min  
 Delta R.T.: 0.003 min  
 Response: 26722  
 Conc: 0.35 ng/ml



#44 AR-1268-4

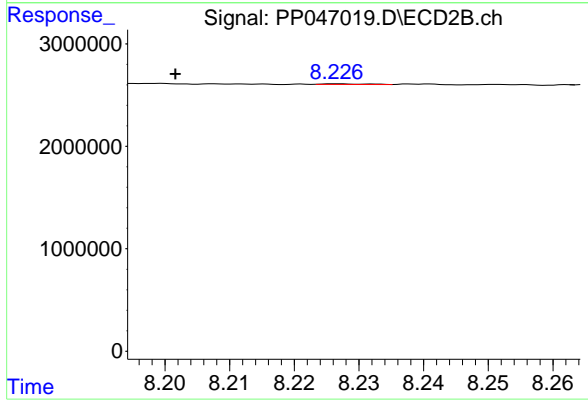
R.T.: 7.904 min  
 Delta R.T.: 0.001 min  
 Response: 140788  
 Conc: 0.96 ng/ml



#45 AR-1268-5

R.T.: 9.611 min  
 Delta R.T.: -0.009 min  
 Response: 177460  
 Conc: 0.32 ng/ml

Instrument :  
 ECD\_P  
 ClientSampleId :  
 31592



#45 AR-1268-5

R.T.: 8.227 min  
 Delta R.T.: 0.025 min  
 Response: 29997  
 Conc: 0.03 ng/ml