

Data Path : Z:\pestpcbsrv\HPCHEM1\ECD_P\Data\PP050422\
 Data File : PP047021.D
 Signal(s) : Signal #1: ECD1A.ch Signal #2: ECD2B.ch
 Acq On : 05 May 2022 03:43
 Operator : YP\AJ
 Sample : AR1660CCC500
 Misc :
 ALS Vial : 3 Sample Multiplier: 1

Instrument :
 ECD_P
 ClientSampleId :
 AR1660CCC500

Integration File signal 1: autoint1.e
 Integration File signal 2: autoint2.e
 Quant Time: May 05 05:36:35 2022
 Quant Method : Z:\pestpcbsrv\HPCHEM1\ECD_P\methods\PP042222.M
 Quant Title : GC EXTRACTABLES
 QLast Update : Tue May 03 11:45:42 2022
 Response via : Initial Calibration
 Integrator: ChemStation

Volume Inj. : 2 µl
 Signal #1 Phase : ZB-MR1 Signal #2 Phase: ZB-MR2
 Signal #1 Info : 30Mx0.32mmx 0.50µ Signal #2 Info : 30M x 0.32mm x 0.25µm

Compound	RT#1	RT#2	Resp#1	Resp#2	ng/ml	ng/ml
System Monitoring Compounds						
1) SA Tetrachlo...	3.856	3.123	115.6E6	165.1E6	47.904	50.328
2) SA Decachlor...	9.926f	8.433	68984424	115.8E6	46.880	48.551
Target Compounds						
3) L1 AR-1016-1	5.099	4.251	36708103	59052551	487.481	514.015
4) L1 AR-1016-2	5.122	4.269	54056504	87028291	474.715	512.939
5) L1 AR-1016-3	5.188	4.453	32400682	44869064	453.250	512.524
6) L1 AR-1016-4	5.293	4.501	27432382	36275513	456.279	521.049
7) L1 AR-1016-5	5.611	4.724	25888860	44408357	488.956	522.127
8) L2 AR-1221-1	4.076	3.344	3449873	5722673	125.093	129.599
9) L2 AR-1221-2	4.172	3.434	4239223	8366412	208.797	247.710
10) L2 AR-1221-3	4.251	3.512	18520107	30791182	284.108	309.965
11) L3 AR-1232-1	4.251	3.512	18520107	30791182	378.264	405.893
12) L3 AR-1232-2	4.810	4.269	28368790	87028291	1168.696	1207.177
13) L3 AR-1232-3	5.122	4.453	54056504	44869064	1144.493	1232.342
14) L3 AR-1232-4	5.293	4.544	27432382	44376327	1127.410	1393.021
15) L3 AR-1232-5	5.394	4.724	21724035	44408357	1305.647	1541.625
16) L4 AR-1242-1	5.122	4.251	54056504	59052551	852.573	599.008 #
17) L4 AR-1242-2	5.122f	4.269	54056504	87028291	567.400	600.850
18) L4 AR-1242-3	5.188	4.453	32400682	44869064	541.226	603.732
19) L4 AR-1242-4	5.293f	4.544	27432382	44376327	542.394	621.343
20) L4 AR-1242-5	6.090f	5.096f	3680862	40584659	73.046	420.608 #
21) L5 AR-1248-1	5.122	4.269	54056504	87028291	1293.370	1266.494
22) L5 AR-1248-2	5.394	4.501	21724035	36275513	367.558	388.006
23) L5 AR-1248-3	5.611	4.544	25888860	44376327	370.628	454.571
24) L5 AR-1248-4	6.049f	4.724	4290012	44408357	55.946	377.244 #
25) L5 AR-1248-5	6.090f	5.139f	3680862	5880397	47.325	48.255
26) L6 AR-1254-1	6.049	5.096f	4290012	40584659	73.857	210.323 #
27) L6 AR-1254-2	6.257	5.256f	18629616	32611514	151.161	195.838 #
28) L6 AR-1254-3	6.657f	5.700	15844328	64777566	119.743	259.787 #
29) L6 AR-1254-4	6.968f	5.965f	9246321	20851626	93.030	121.531 #
30) L6 AR-1254-5	7.462f	6.380f	6937415	105.2E6	78.877	482.222 #
31) L7 AR-1260-1	6.835	5.823	49512752	85281823	586.718	535.941
32) L7 AR-1260-2	7.118	6.030	50366814	122.6E6	500.210	602.689
33) L7 AR-1260-3	7.510	6.190	40107405	99276832	495.081	581.191
34) L7 AR-1260-4	7.759	6.699	36167650	83664379	454.078	575.630 #
35) L7 AR-1260-5	8.099	6.968	73692157	209.8E6	463.929	597.605 #
36) L8 AR-1262-1	7.510f	6.421f	40107405	90022996	331.827	364.418
37) L8 AR-1262-2	8.099f	6.699f	73692157	83664379	383.197	432.847
38) L8 AR-1262-3	8.437	7.271f	46425000	47915455	345.781	295.112
39) L8 AR-1262-4	8.557f	7.342f	241156	136.8E6	3.829	477.688 #
40) L8 AR-1262-5	9.184f	7.884f	14370984	46423942	208.288	353.823 #
41) L9 AR-1268-1	8.437	7.271f	46425000	47915455	193.133	99.995 #

Data Path : Z:\pestpcbsrv\HPCHEM1\ECD_P\Data\PP050422\
 Data File : PP047021.D
 Signal(s) : Signal #1: ECD1A.ch Signal #2: ECD2B.ch
 Acq On : 05 May 2022 03:43
 Operator : YP\AJ
 Sample : AR1660CCC500
 Misc :
 ALS Vial : 3 Sample Multiplier: 1

Instrument :
 ECD_P
 ClientSampleId :
 AR1660CCC500

Integration File signal 1: autoint1.e
 Integration File signal 2: autoint2.e
 Quant Time: May 05 05:36:35 2022
 Quant Method : Z:\pestpcbsrv\HPCHEM1\ECD_P\methods\PP042222.M
 Quant Title : GC EXTRACTABLES
 QLast Update : Tue May 03 11:45:42 2022
 Response via : Initial Calibration
 Integrator: ChemStation

Volume Inj. : 2 µl
 Signal #1 Phase : ZB-MR1 Signal #2 Phase: ZB-MR2
 Signal #1 Info : 30Mx0.32mmx 0.50µ Signal #2 Info : 30M x 0.32mm x 0.25µm

	Compound	RT#1	RT#2	Resp#1	Resp#2	ng/ml	ng/ml
42)	L9 AR-1268-2	8.557f	7.342f	241156	136.8E6	1.089	323.009 #
43)	L9 AR-1268-3	8.748f	0.000	808297	0	4.208	N.D. #
44)	L9 AR-1268-4	9.184f	7.884f	14370984	46423942	186.268	315.684 #
45)	L9 AR-1268-5	9.597f	8.181f	6173248	10796323	11.025	10.558

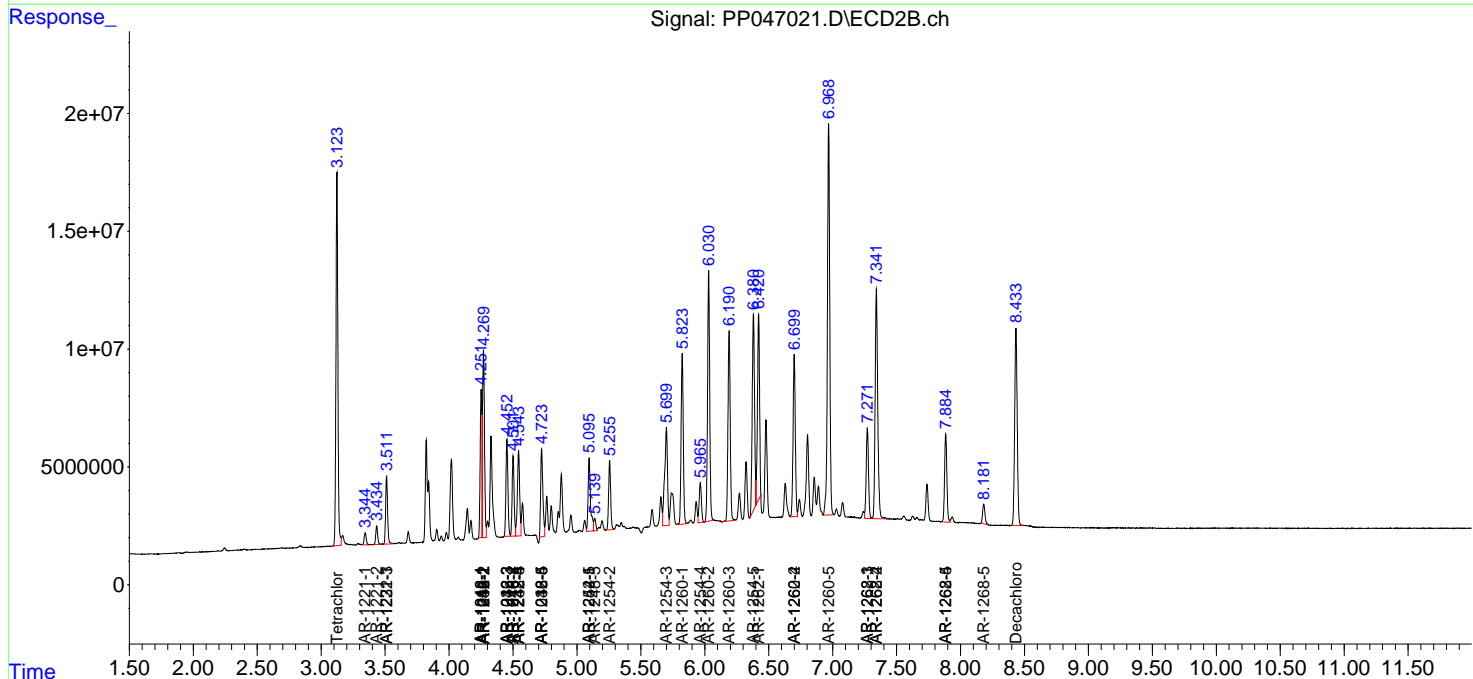
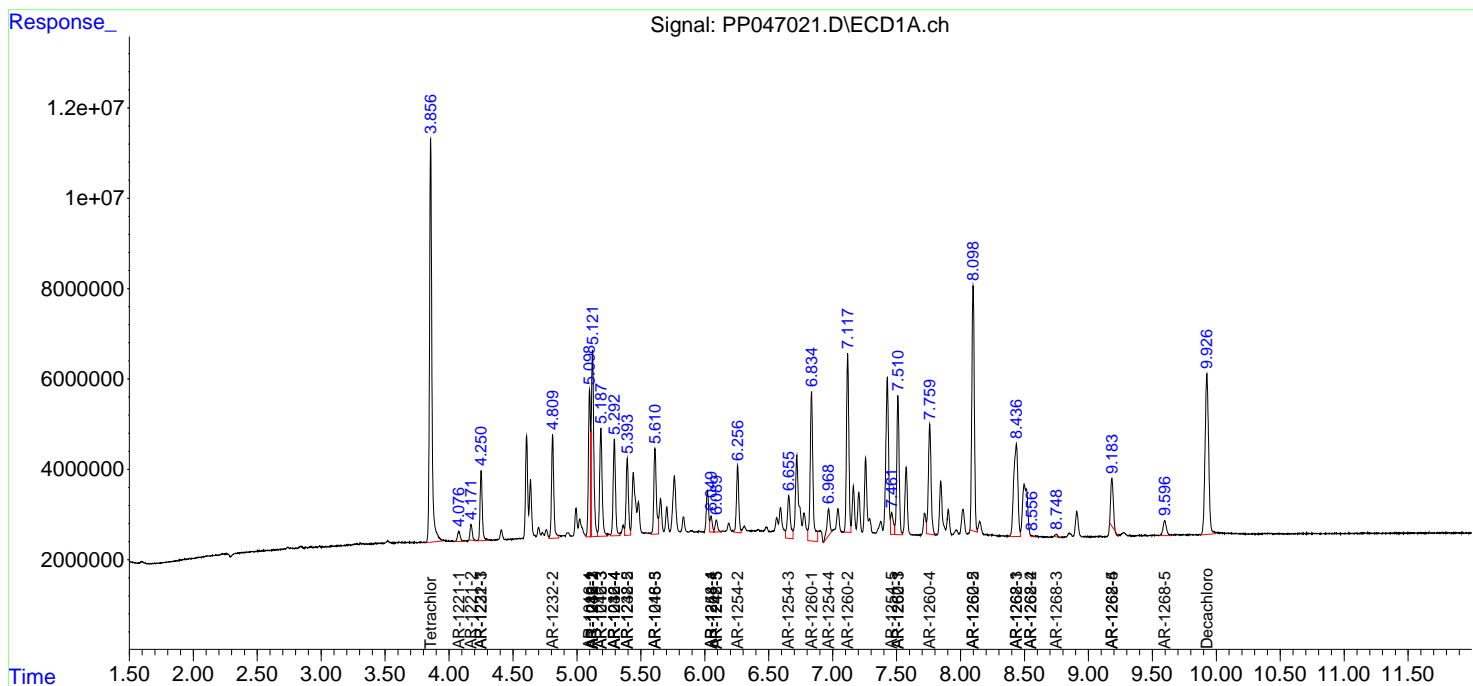
(f)=RT Delta > 1/2 Window (#)=Amounts differ by > 25% (m)=manual int.

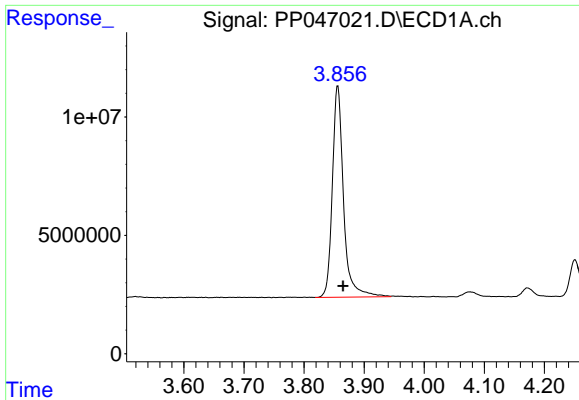
Data Path : Z:\pestpcbsrv\HPCHEM1\ECD_P\Data\PP050422\
 Data File : PP047021.D
 Signal(s) : Signal #1: ECD1A.ch Signal #2: ECD2B.ch
 Acq On : 05 May 2022 03:43
 Operator : YP\AJ
 Sample : AR1660CCC500
 Misc :
 ALS Vial : 3 Sample Multiplier: 1

Instrument :
 ECD_P
 ClientSampleId :
 AR1660CCC500

Integration File signal 1: autoint1.e
 Integration File signal 2: autoint2.e
 Quant Time: May 05 05:36:35 2022
 Quant Method : Z:\pestpcbsrv\HPCHEM1\ECD_P\methods\PP042222.M
 Quant Title : GC EXTRACTABLES
 QLast Update : Tue May 03 11:45:42 2022
 Response via : Initial Calibration
 Integrator: ChemStation

Volume Inj. : 2 µl
 Signal #1 Phase : ZB-MR1 Signal #2 Phase: ZB-MR2
 Signal #1 Info : 30Mx0.32mmx 0.50µ Signal #2 Info : 30M x 0.32mm x 0.25µm

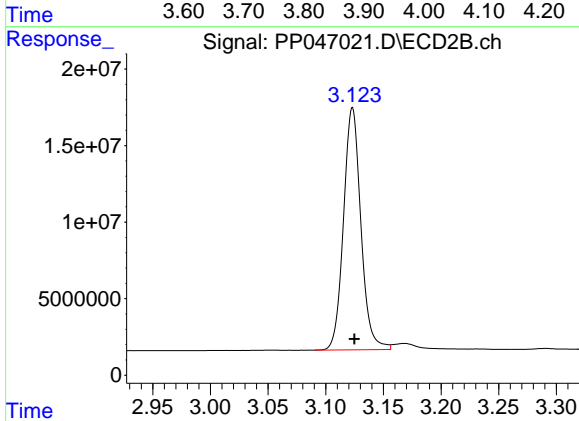




#1 Tetrachloro-m-xylene

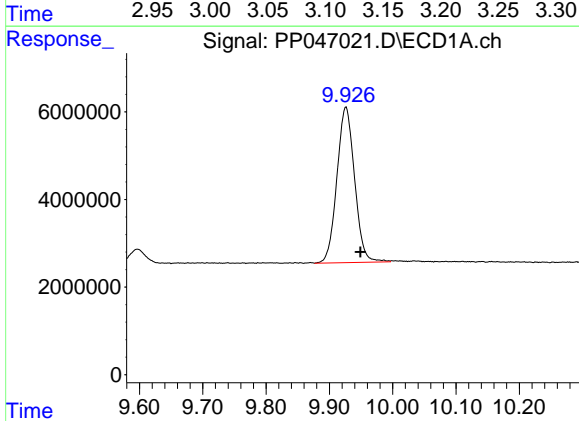
R.T.: 3.856 min
 Delta R.T.: -0.009 min
 Response: 115638444
 Conc: 47.90 ng/ml

Instrument :
 ECD_P
 ClientSampleId :
 AR1660CCC500



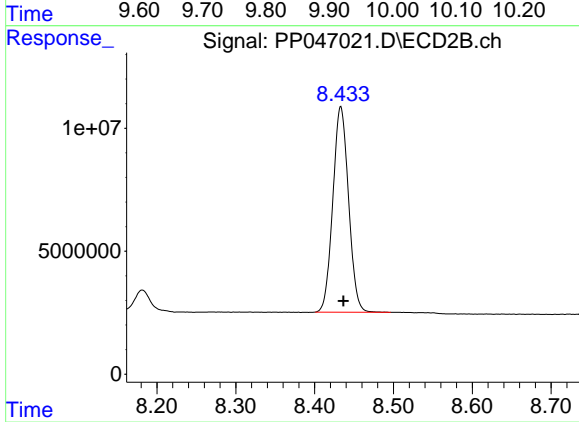
#1 Tetrachloro-m-xylene

R.T.: 3.123 min
 Delta R.T.: -0.002 min
 Response: 165094215
 Conc: 50.33 ng/ml



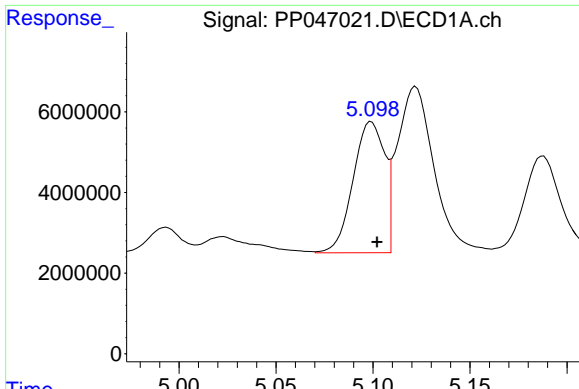
#2 Decachlorobiphenyl

R.T.: 9.926 min
 Delta R.T.: -0.023 min
 Response: 68984424
 Conc: 46.88 ng/ml



#2 Decachlorobiphenyl

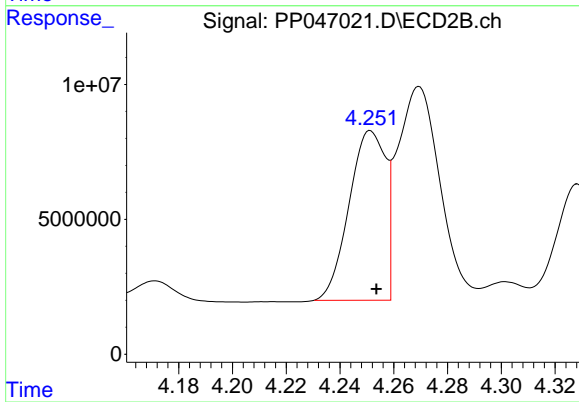
R.T.: 8.433 min
 Delta R.T.: -0.003 min
 Response: 115809402
 Conc: 48.55 ng/ml



#3 AR-1016-1

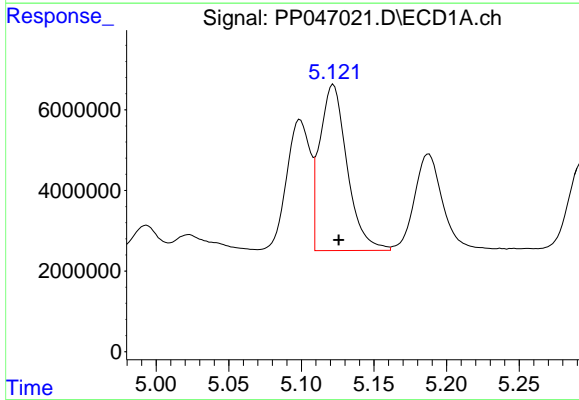
R.T.: 5.099 min
 Delta R.T.: -0.003 min
 Response: 36708103
 Conc: 487.48 ng/ml

Instrument :
 ECD_P
 ClientSampleId :
 AR1660CCC500



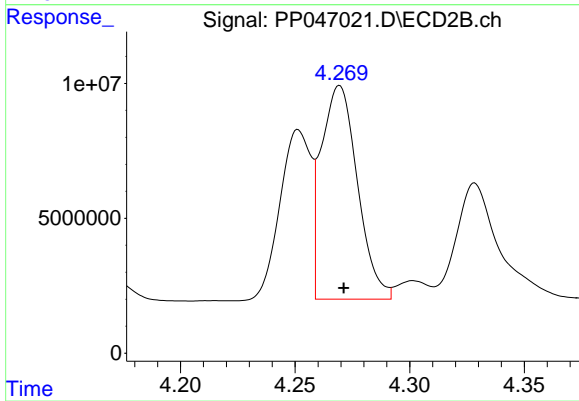
#3 AR-1016-1

R.T.: 4.251 min
 Delta R.T.: -0.002 min
 Response: 59052551
 Conc: 514.02 ng/ml



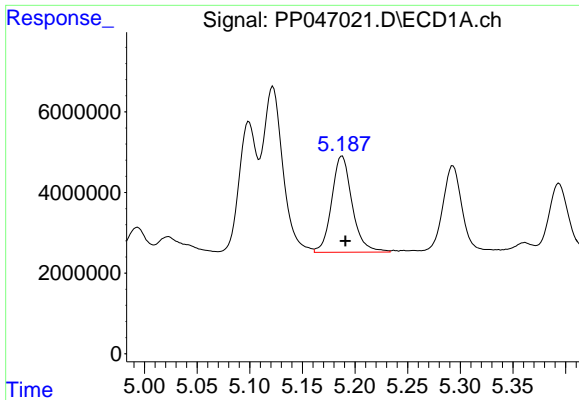
#4 AR-1016-2

R.T.: 5.122 min
 Delta R.T.: -0.004 min
 Response: 54056504
 Conc: 474.72 ng/ml



#4 AR-1016-2

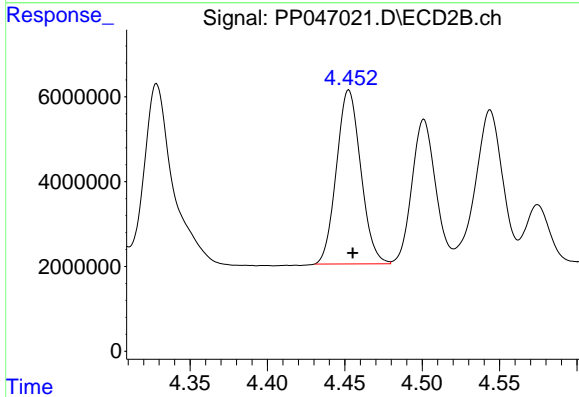
R.T.: 4.269 min
 Delta R.T.: -0.002 min
 Response: 87028291
 Conc: 512.94 ng/ml



#5 AR-1016-3

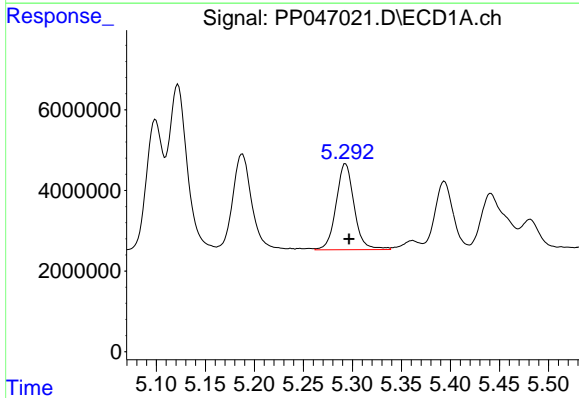
R.T.: 5.188 min
 Delta R.T.: -0.003 min
 Response: 32400682
 Conc: 453.25 ng/ml

Instrument :
 ECD_P
 ClientSampleId :
 AR1660CCC500



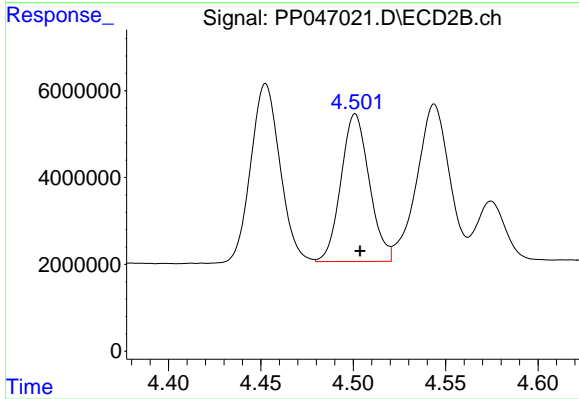
#5 AR-1016-3

R.T.: 4.453 min
 Delta R.T.: -0.003 min
 Response: 44869064
 Conc: 512.52 ng/ml



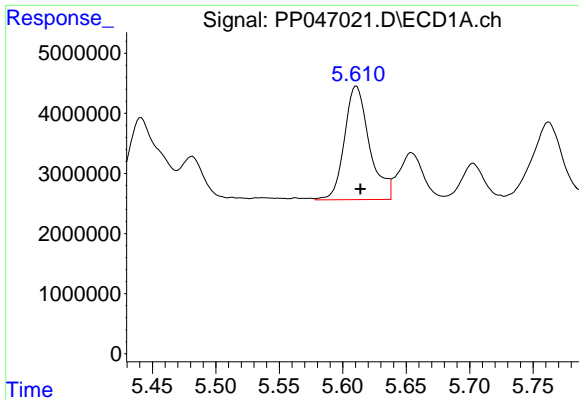
#6 AR-1016-4

R.T.: 5.293 min
 Delta R.T.: -0.004 min
 Response: 27432382
 Conc: 456.28 ng/ml



#6 AR-1016-4

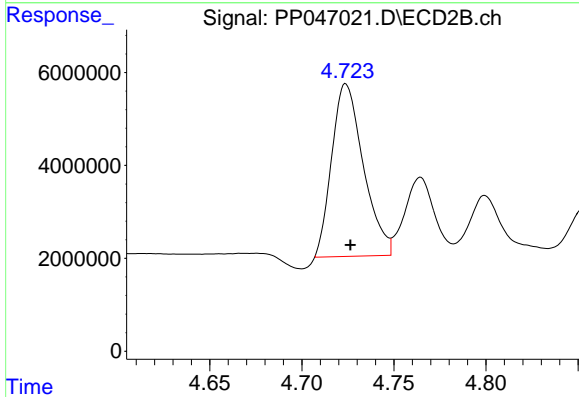
R.T.: 4.501 min
 Delta R.T.: -0.003 min
 Response: 36275513
 Conc: 521.05 ng/ml



#7 AR-1016-5

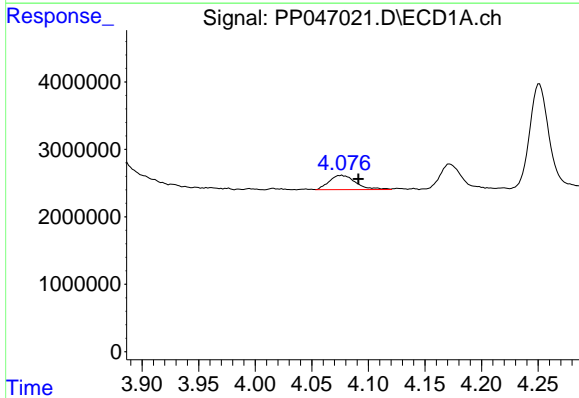
R.T.: 5.611 min
 Delta R.T.: -0.003 min
 Response: 25888860
 Conc: 488.96 ng/ml

Instrument :
 ECD_P
 ClientSampleId :
 AR1660CCC500



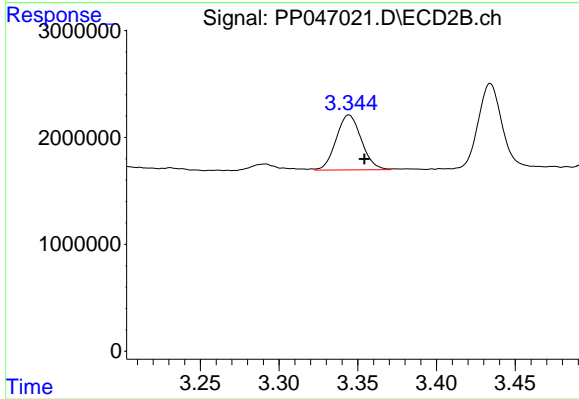
#7 AR-1016-5

R.T.: 4.724 min
 Delta R.T.: -0.002 min
 Response: 44408357
 Conc: 522.13 ng/ml



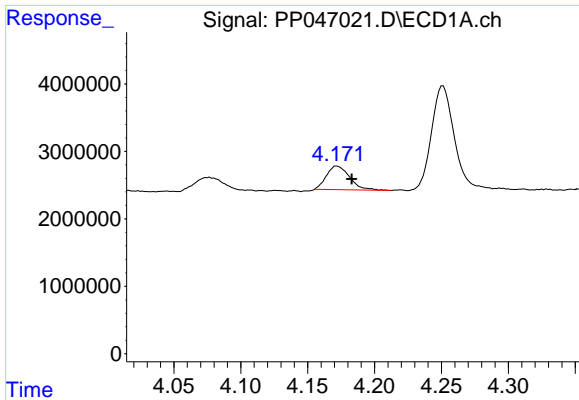
#8 AR-1221-1

R.T.: 4.076 min
 Delta R.T.: -0.015 min
 Response: 3449873
 Conc: 125.09 ng/ml



#8 AR-1221-1

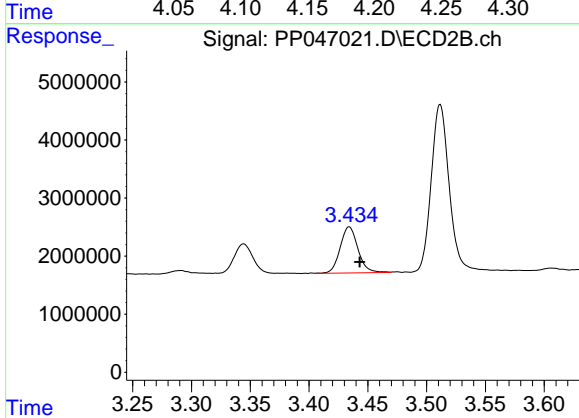
R.T.: 3.344 min
 Delta R.T.: -0.010 min
 Response: 5722673
 Conc: 129.60 ng/ml



#9 AR-1221-2

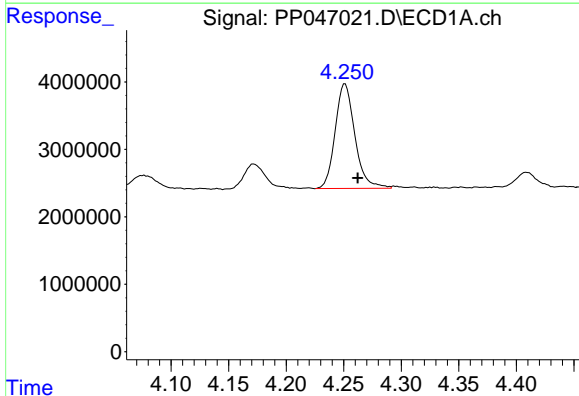
R.T.: 4.172 min
 Delta R.T.: -0.011 min
 Response: 4239223
 Conc: 208.80 ng/ml

Instrument :
 ECD_P
 ClientSampleId :
 AR1660CCC500



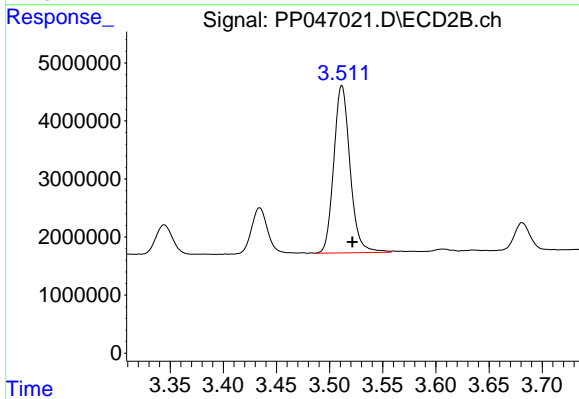
#9 AR-1221-2

R.T.: 3.434 min
 Delta R.T.: -0.009 min
 Response: 8366412
 Conc: 247.71 ng/ml



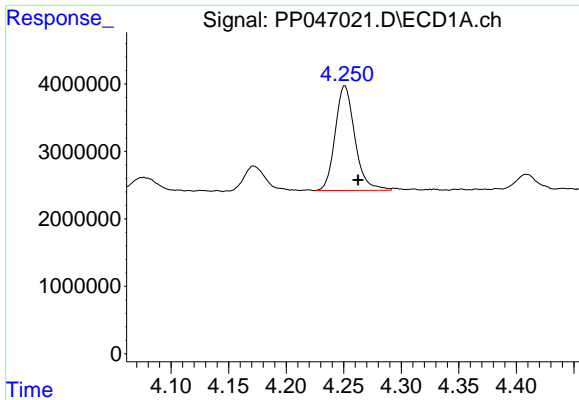
#10 AR-1221-3

R.T.: 4.251 min
 Delta R.T.: -0.011 min
 Response: 18520107
 Conc: 284.11 ng/ml



#10 AR-1221-3

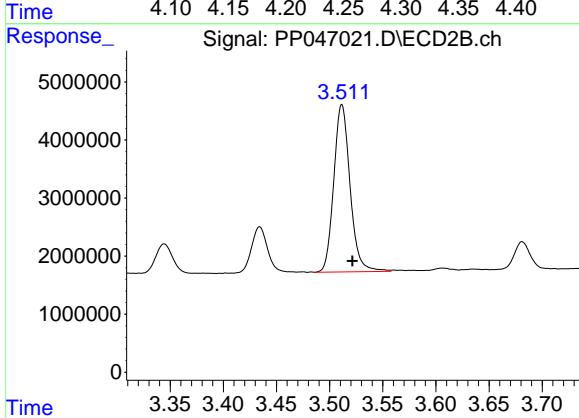
R.T.: 3.512 min
 Delta R.T.: -0.010 min
 Response: 30791182
 Conc: 309.97 ng/ml



#11 AR-1232-1

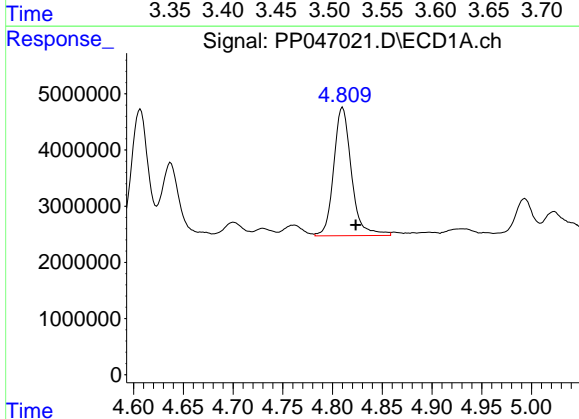
R.T.: 4.251 min
 Delta R.T.: -0.011 min
 Response: 18520107
 Conc: 378.26 ng/ml

Instrument :
 ECD_P
 ClientSampleId :
 AR1660CCC500



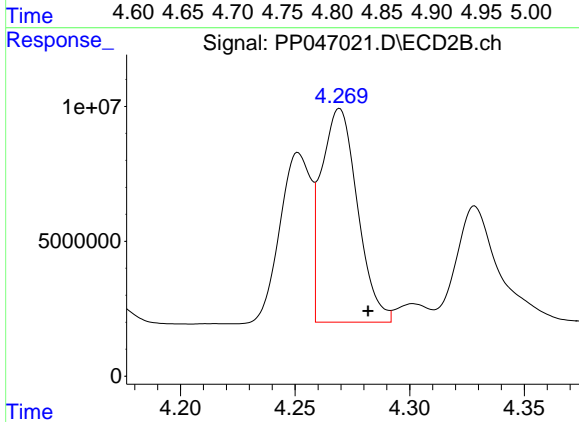
#11 AR-1232-1

R.T.: 3.512 min
 Delta R.T.: -0.010 min
 Response: 30791182
 Conc: 405.89 ng/ml



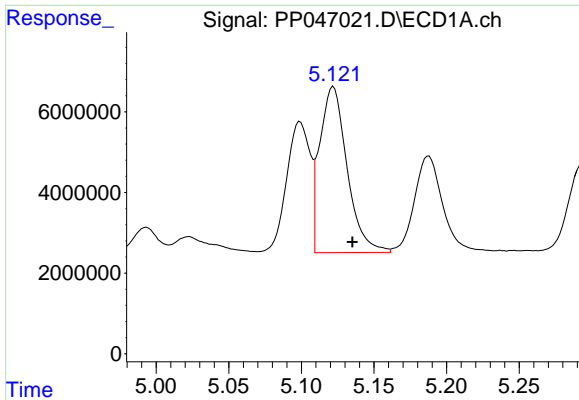
#12 AR-1232-2

R.T.: 4.810 min
 Delta R.T.: -0.013 min
 Response: 28368790
 Conc: 1168.70 ng/ml



#12 AR-1232-2

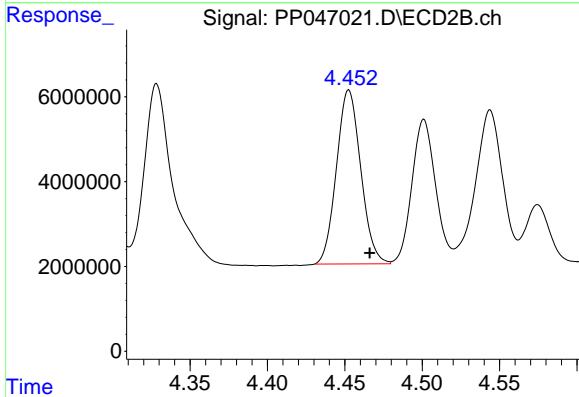
R.T.: 4.269 min
 Delta R.T.: -0.012 min
 Response: 87028291
 Conc: 1207.18 ng/ml



#13 AR-1232-3

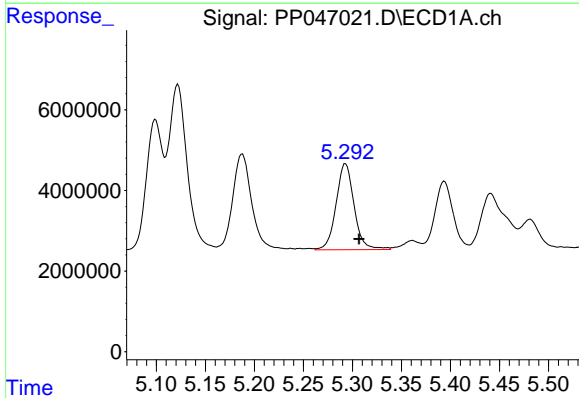
R.T.: 5.122 min
 Delta R.T.: -0.013 min
 Response: 54056504
 Conc: 1144.49 ng/ml

Instrument :
 ECD_P
 ClientSampleId :
 AR1660CCC500



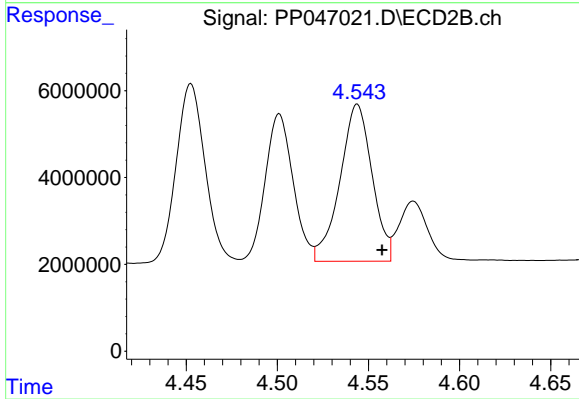
#13 AR-1232-3

R.T.: 4.453 min
 Delta R.T.: -0.014 min
 Response: 44869064
 Conc: 1232.34 ng/ml



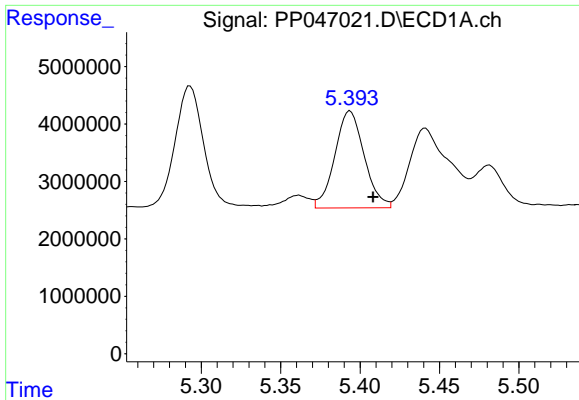
#14 AR-1232-4

R.T.: 5.293 min
 Delta R.T.: -0.014 min
 Response: 27432382
 Conc: 1127.41 ng/ml



#14 AR-1232-4

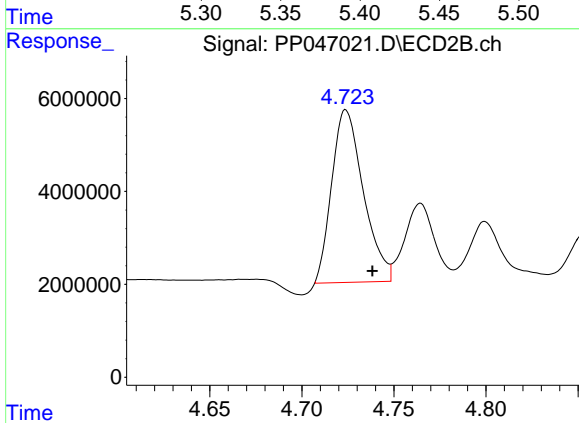
R.T.: 4.544 min
 Delta R.T.: -0.014 min
 Response: 44376327
 Conc: 1393.02 ng/ml



#15 AR-1232-5

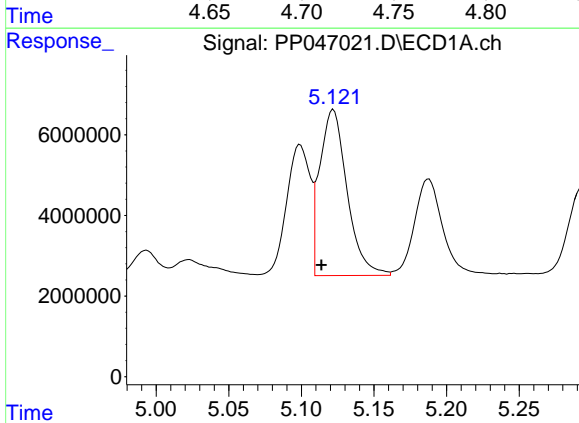
R.T.: 5.394 min
 Delta R.T.: -0.014 min
 Response: 21724035
 Conc: 1305.65 ng/ml

Instrument :
 ECD_P
 ClientSampleId :
 AR1660CCC500



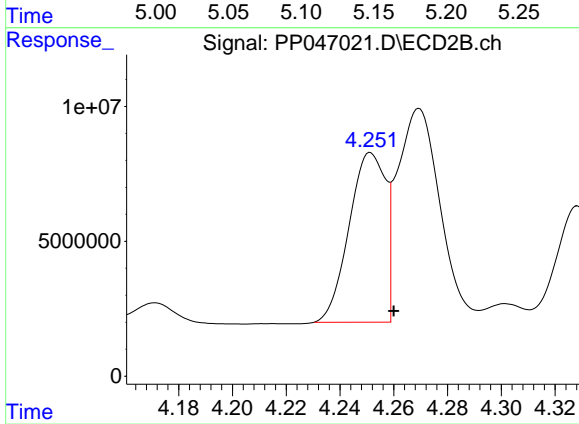
#15 AR-1232-5

R.T.: 4.724 min
 Delta R.T.: -0.014 min
 Response: 44408357
 Conc: 1541.63 ng/ml



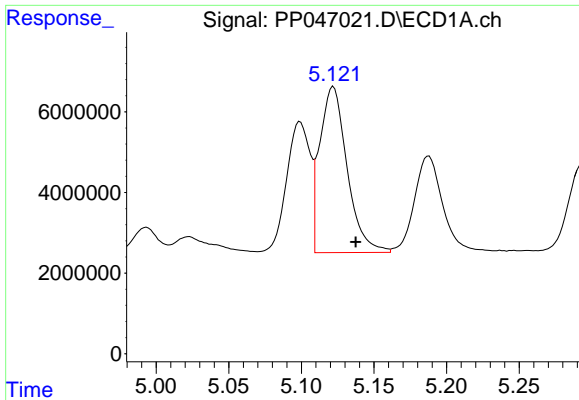
#16 AR-1242-1

R.T.: 5.122 min
 Delta R.T.: 0.008 min
 Response: 54056504
 Conc: 852.57 ng/ml



#16 AR-1242-1

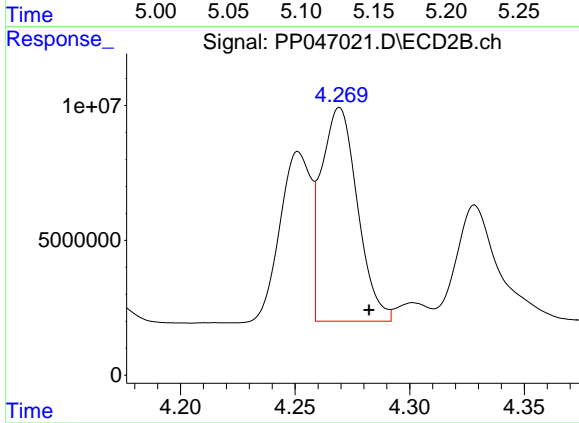
R.T.: 4.251 min
 Delta R.T.: -0.009 min
 Response: 59052551
 Conc: 599.01 ng/ml



#17 AR-1242-2

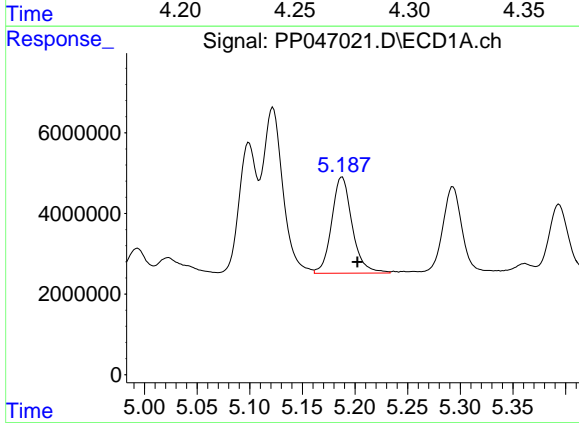
R.T.: 5.122 min
 Delta R.T.: -0.015 min
 Response: 54056504
 Conc: 567.40 ng/ml

Instrument :
 ECD_P
 ClientSampleId :
 AR1660CCC500



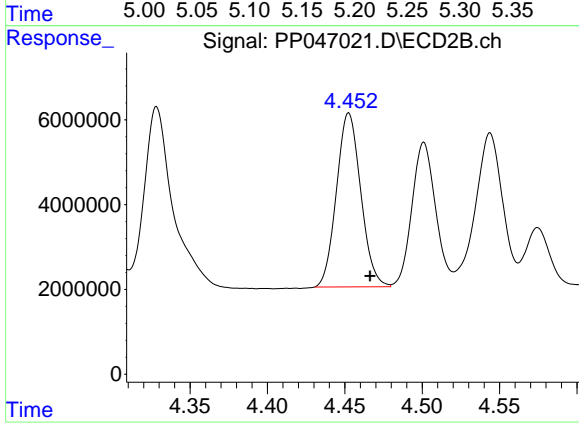
#17 AR-1242-2

R.T.: 4.269 min
 Delta R.T.: -0.013 min
 Response: 87028291
 Conc: 600.85 ng/ml



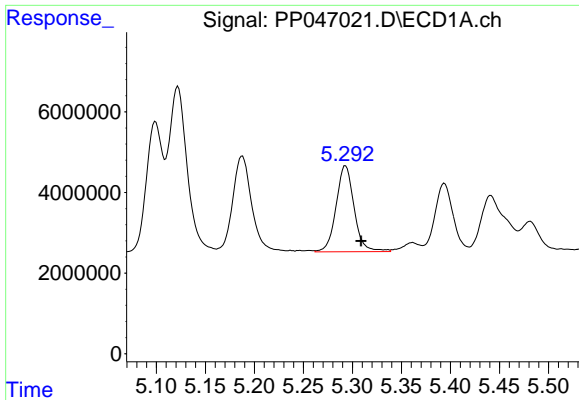
#18 AR-1242-3

R.T.: 5.188 min
 Delta R.T.: -0.015 min
 Response: 32400682
 Conc: 541.23 ng/ml



#18 AR-1242-3

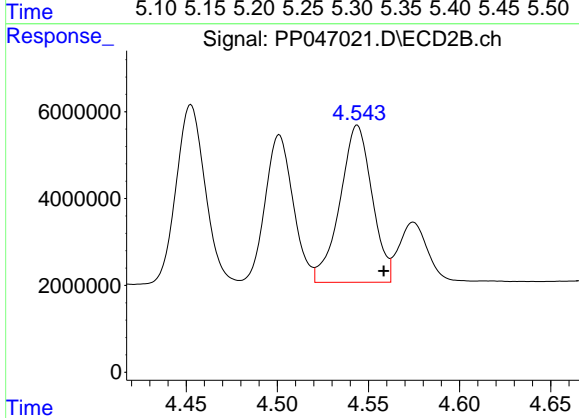
R.T.: 4.453 min
 Delta R.T.: -0.014 min
 Response: 44869064
 Conc: 603.73 ng/ml



#19 AR-1242-4

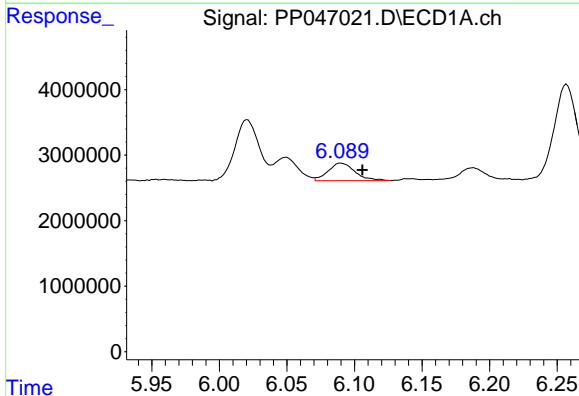
R.T.: 5.293 min
 Delta R.T.: -0.016 min
 Response: 27432382
 Conc: 542.39 ng/ml

Instrument :
 ECD_P
 ClientSampleId :
 AR1660CCC500



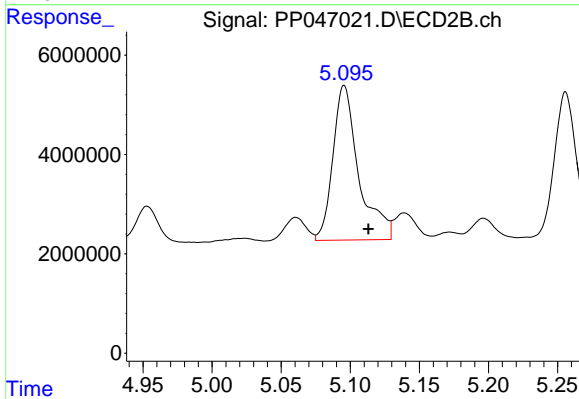
#19 AR-1242-4

R.T.: 4.544 min
 Delta R.T.: -0.014 min
 Response: 44376327
 Conc: 621.34 ng/ml



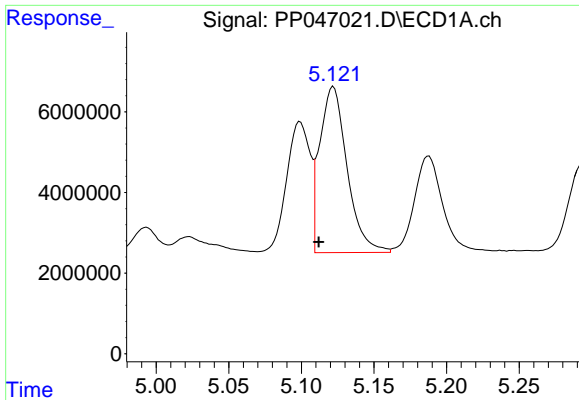
#20 AR-1242-5

R.T.: 6.090 min
 Delta R.T.: -0.016 min
 Response: 3680862
 Conc: 73.05 ng/ml



#20 AR-1242-5

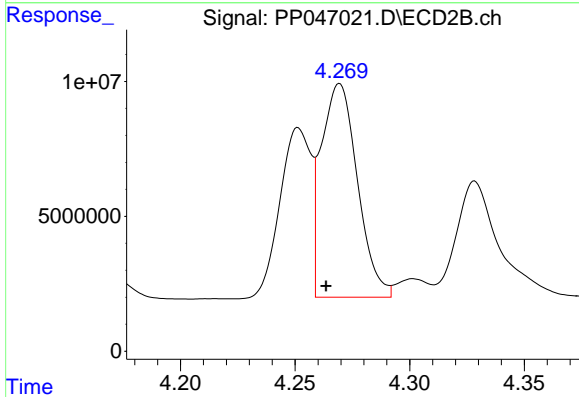
R.T.: 5.096 min
 Delta R.T.: -0.018 min
 Response: 40584659
 Conc: 420.61 ng/ml



#21 AR-1248-1

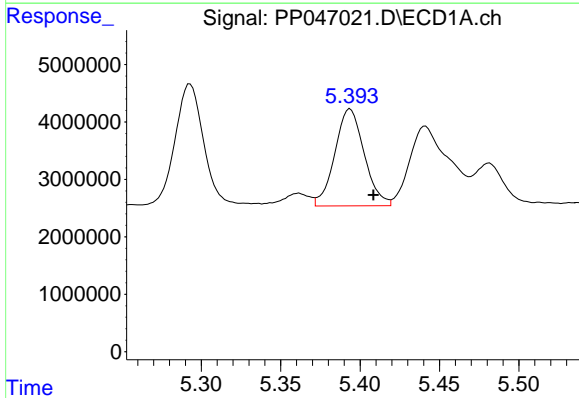
R.T.: 5.122 min
 Delta R.T.: 0.010 min
 Response: 54056504
 Conc: 1293.37 ng/ml

Instrument :
 ECD_P
 ClientSampleId :
 AR1660CCC500



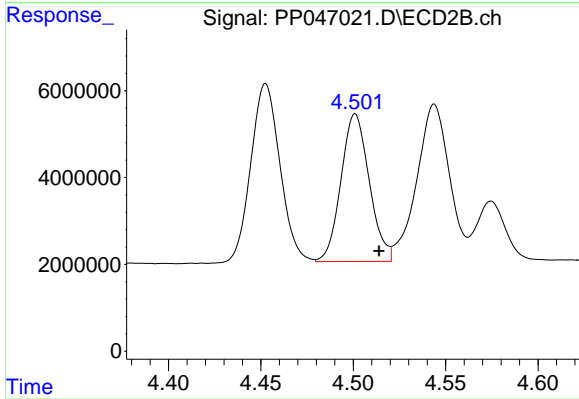
#21 AR-1248-1

R.T.: 4.269 min
 Delta R.T.: 0.006 min
 Response: 87028291
 Conc: 1266.49 ng/ml



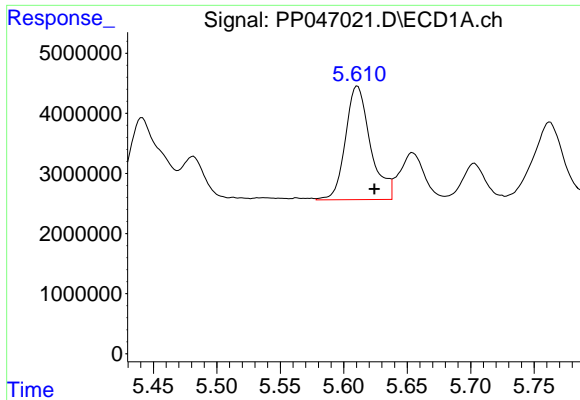
#22 AR-1248-2

R.T.: 5.394 min
 Delta R.T.: -0.015 min
 Response: 21724035
 Conc: 367.56 ng/ml



#22 AR-1248-2

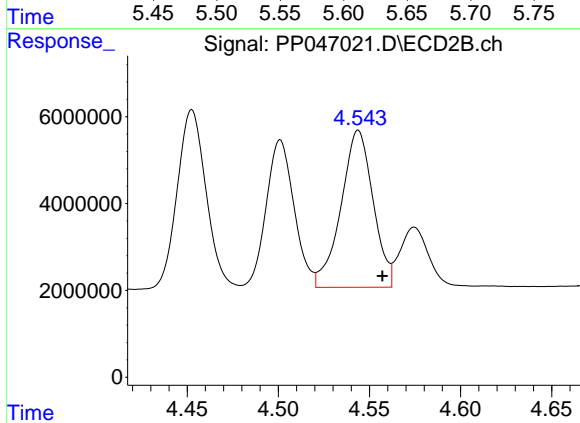
R.T.: 4.501 min
 Delta R.T.: -0.013 min
 Response: 36275513
 Conc: 388.01 ng/ml



#23 AR-1248-3

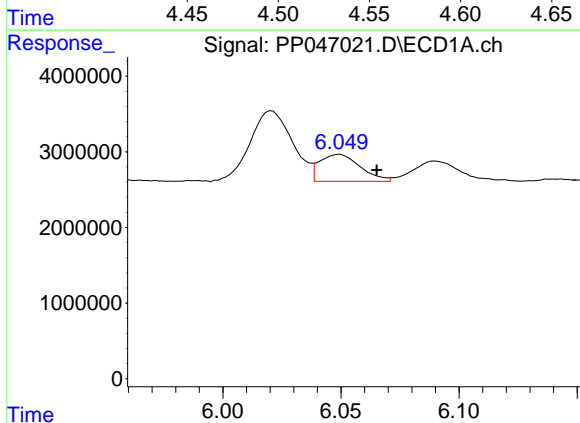
R.T.: 5.611 min
 Delta R.T.: -0.013 min
 Response: 25888860
 Conc: 370.63 ng/ml

Instrument :
 ECD_P
 ClientSampleId :
 AR1660CCC500



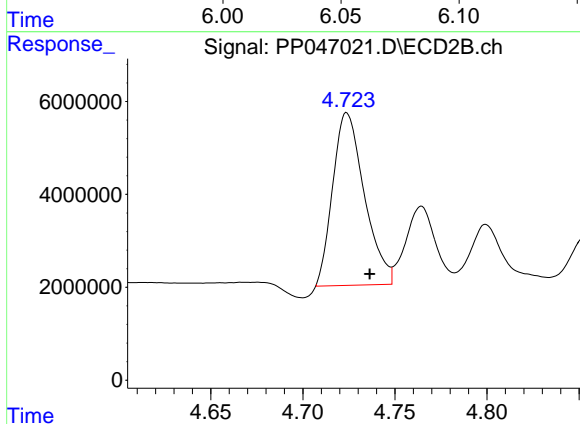
#23 AR-1248-3

R.T.: 4.544 min
 Delta R.T.: -0.013 min
 Response: 44376327
 Conc: 454.57 ng/ml



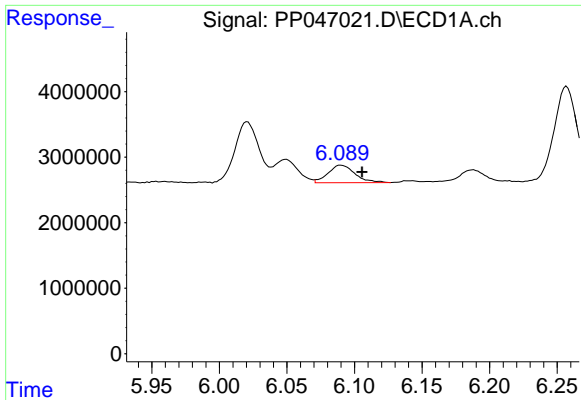
#24 AR-1248-4

R.T.: 6.049 min
 Delta R.T.: -0.016 min
 Response: 4290012
 Conc: 55.95 ng/ml



#24 AR-1248-4

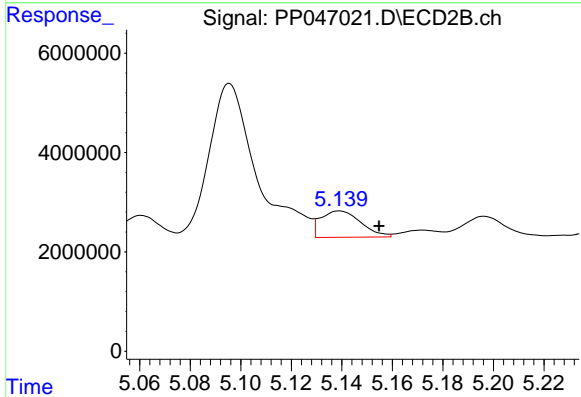
R.T.: 4.724 min
 Delta R.T.: -0.013 min
 Response: 44408357
 Conc: 377.24 ng/ml



#25 AR-1248-5

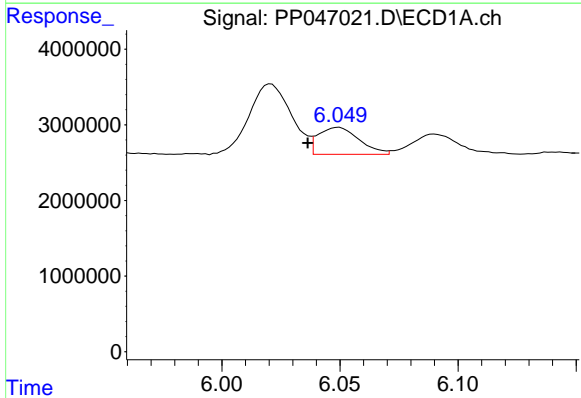
R.T.: 6.090 min
 Delta R.T.: -0.016 min
 Response: 3680862
 Conc: 47.32 ng/ml

Instrument :
 ECD_P
 ClientSampleId :
 AR1660CCC500



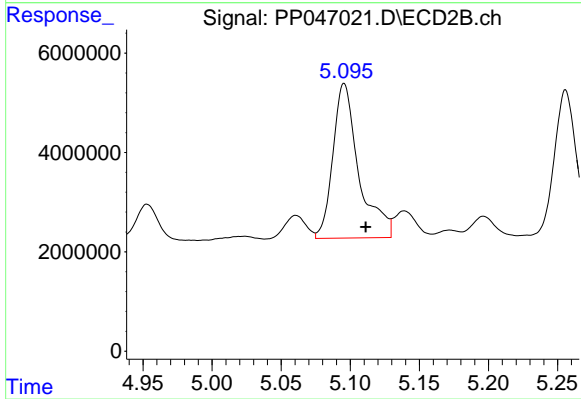
#25 AR-1248-5

R.T.: 5.139 min
 Delta R.T.: -0.016 min
 Response: 5880397
 Conc: 48.26 ng/ml



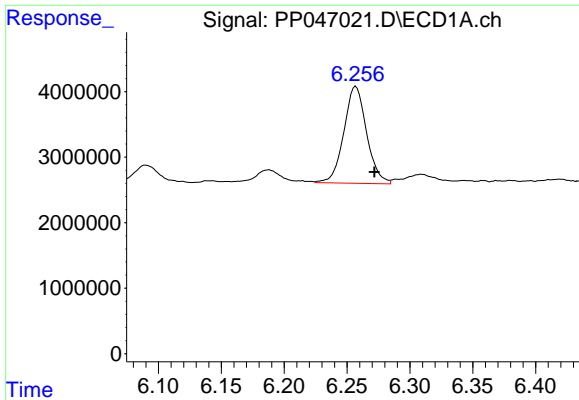
#26 AR-1254-1

R.T.: 6.049 min
 Delta R.T.: 0.013 min
 Response: 4290012
 Conc: 73.86 ng/ml



#26 AR-1254-1

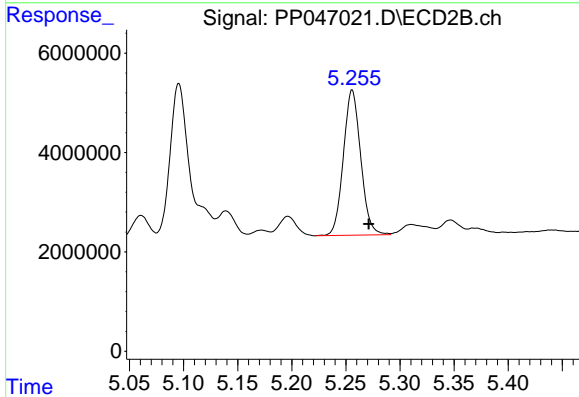
R.T.: 5.096 min
 Delta R.T.: -0.016 min
 Response: 40584659
 Conc: 210.32 ng/ml



#27 AR-1254-2

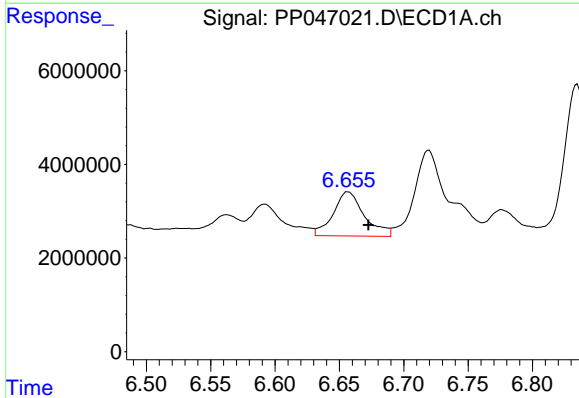
R.T.: 6.257 min
 Delta R.T.: -0.015 min
 Response: 18629616
 Conc: 151.16 ng/ml

Instrument :
 ECD_P
 ClientSampleId :
 AR1660CCC500



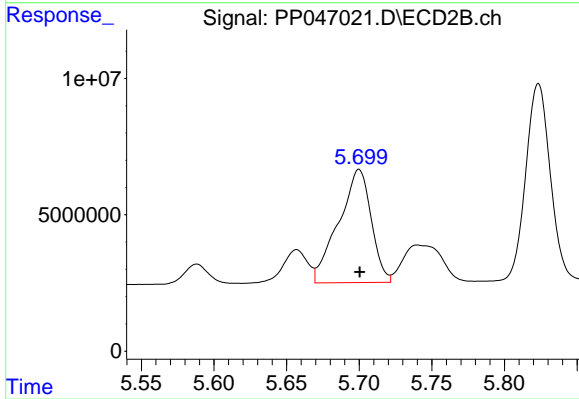
#27 AR-1254-2

R.T.: 5.256 min
 Delta R.T.: -0.015 min
 Response: 32611514
 Conc: 195.84 ng/ml



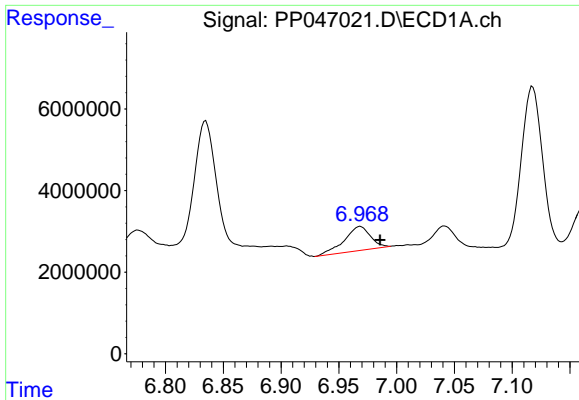
#28 AR-1254-3

R.T.: 6.657 min
 Delta R.T.: -0.016 min
 Response: 15844328
 Conc: 119.74 ng/ml



#28 AR-1254-3

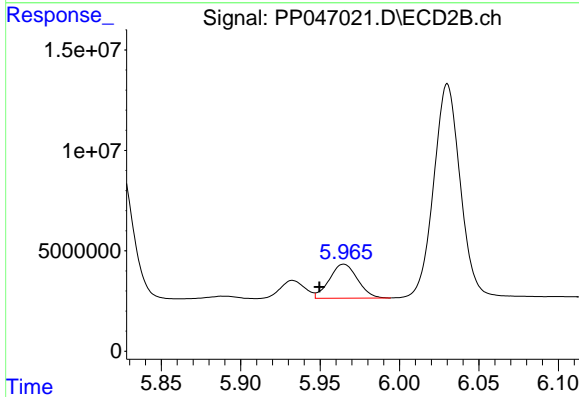
R.T.: 5.700 min
 Delta R.T.: 0.000 min
 Response: 64777566
 Conc: 259.79 ng/ml



#29 AR-1254-4

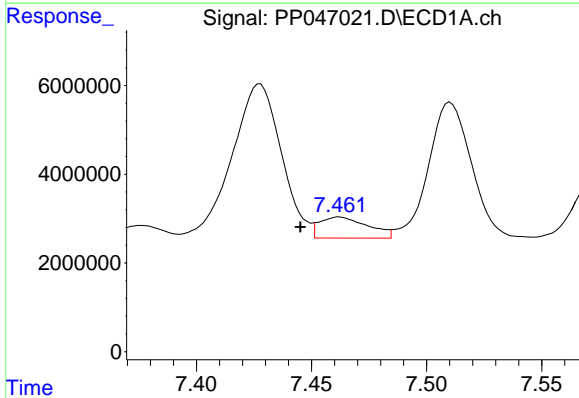
R.T.: 6.968 min
 Delta R.T.: -0.017 min
 Response: 9246321
 Conc: 93.03 ng/ml

Instrument :
 ECD_P
 ClientSampleId :
 AR1660CCC500



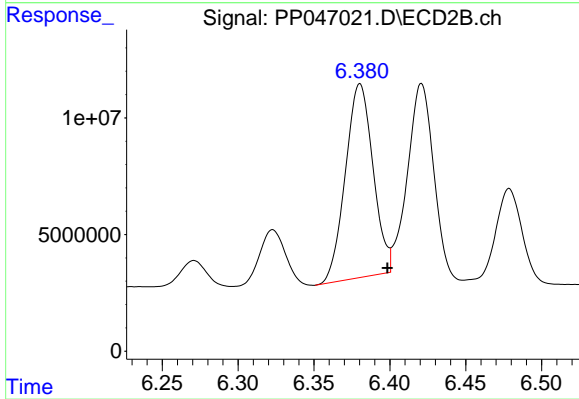
#29 AR-1254-4

R.T.: 5.965 min
 Delta R.T.: 0.015 min
 Response: 20851626
 Conc: 121.53 ng/ml



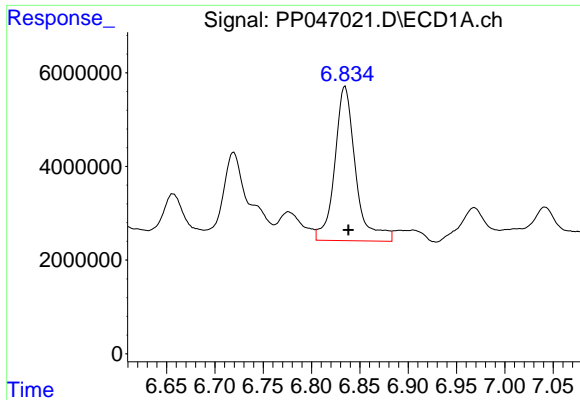
#30 AR-1254-5

R.T.: 7.462 min
 Delta R.T.: 0.017 min
 Response: 6937415
 Conc: 78.88 ng/ml



#30 AR-1254-5

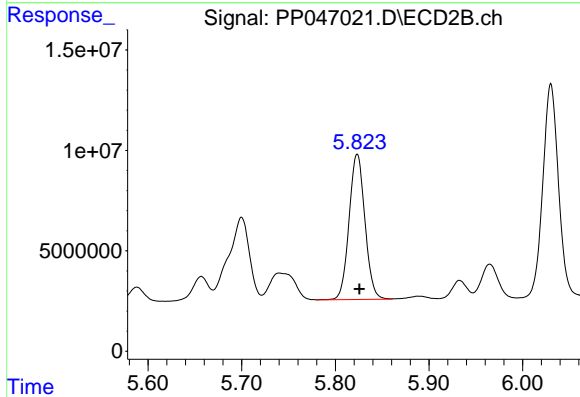
R.T.: 6.380 min
 Delta R.T.: -0.018 min
 Response: 105222268
 Conc: 482.22 ng/ml



#31 AR-1260-1

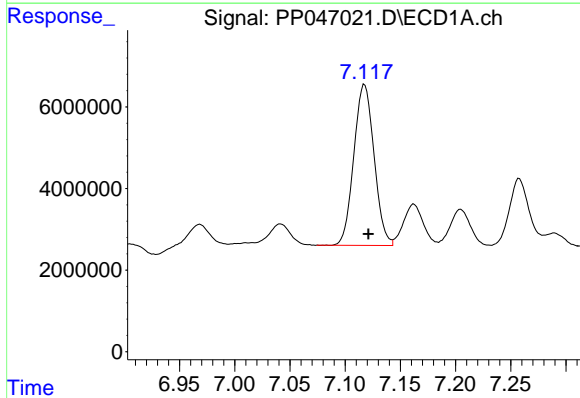
R.T.: 6.835 min
 Delta R.T.: -0.003 min
 Response: 49512752
 Conc: 586.72 ng/ml

Instrument :
 ECD_P
 ClientSampleId :
 AR1660CCC500



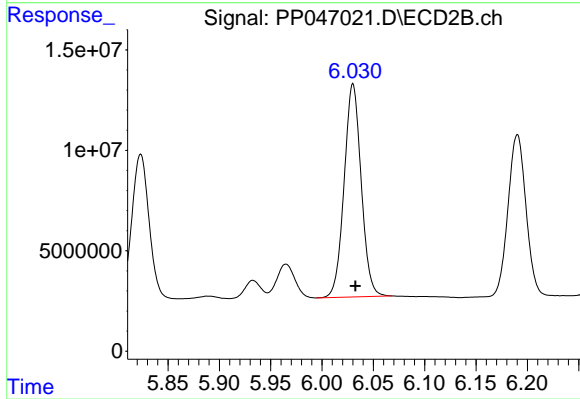
#31 AR-1260-1

R.T.: 5.823 min
 Delta R.T.: -0.002 min
 Response: 85281823
 Conc: 535.94 ng/ml



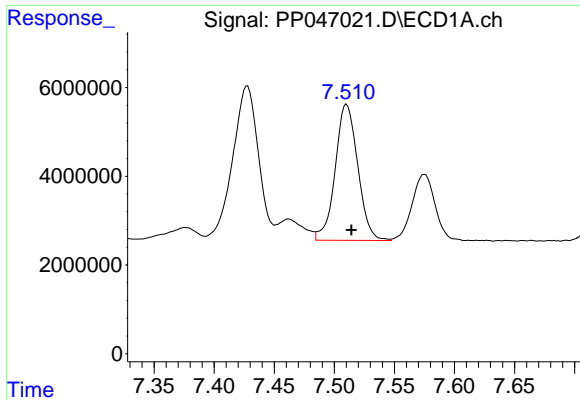
#32 AR-1260-2

R.T.: 7.118 min
 Delta R.T.: -0.003 min
 Response: 50366814
 Conc: 500.21 ng/ml



#32 AR-1260-2

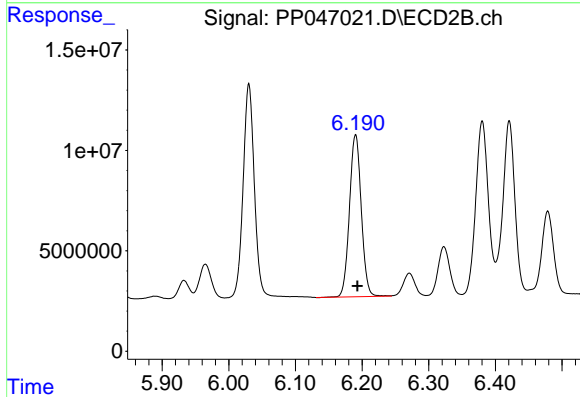
R.T.: 6.030 min
 Delta R.T.: -0.002 min
 Response: 122596101
 Conc: 602.69 ng/ml



#33 AR-1260-3

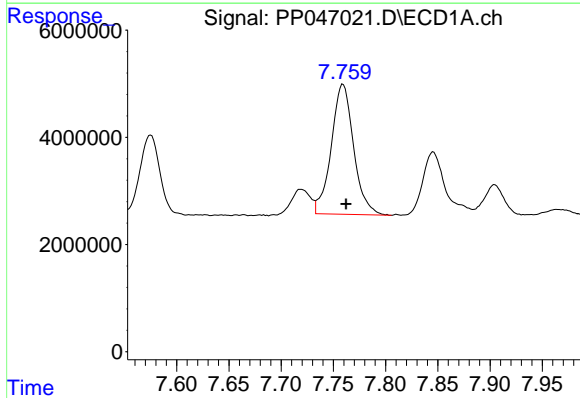
R.T.: 7.510 min
 Delta R.T.: -0.004 min
 Response: 40107405
 Conc: 495.08 ng/ml

Instrument :
 ECD_P
 ClientSampleId :
 AR1660CCC500



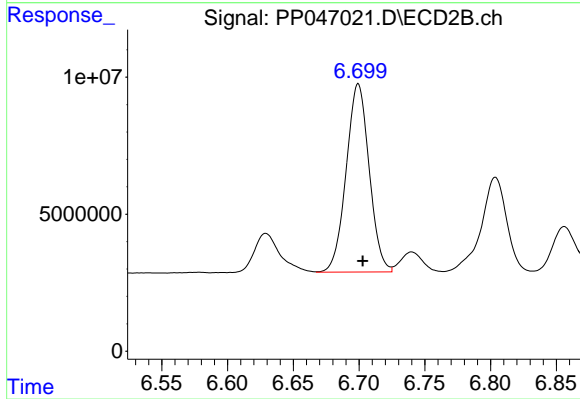
#33 AR-1260-3

R.T.: 6.190 min
 Delta R.T.: -0.003 min
 Response: 99276832
 Conc: 581.19 ng/ml



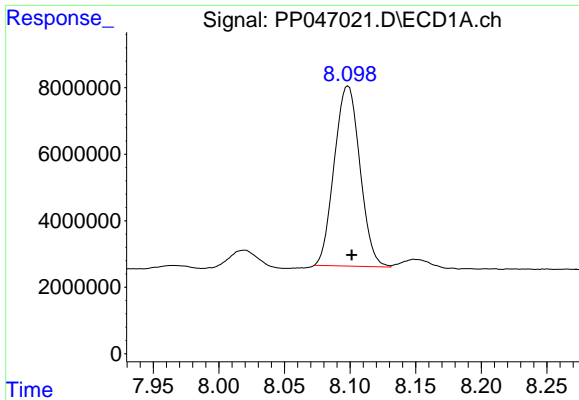
#34 AR-1260-4

R.T.: 7.759 min
 Delta R.T.: -0.003 min
 Response: 36167650
 Conc: 454.08 ng/ml



#34 AR-1260-4

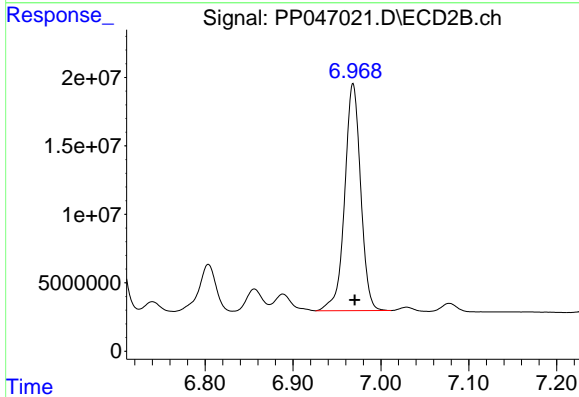
R.T.: 6.699 min
 Delta R.T.: -0.003 min
 Response: 83664379
 Conc: 575.63 ng/ml



#35 AR-1260-5

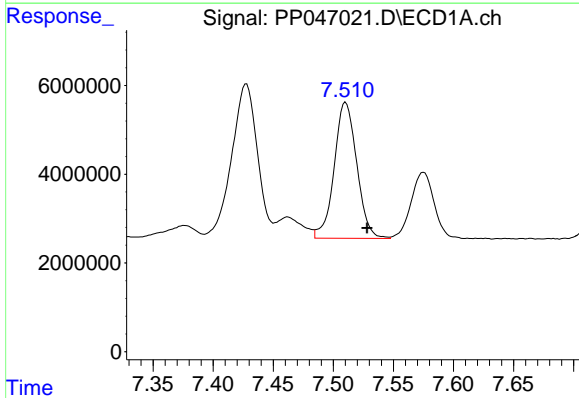
R.T.: 8.099 min
 Delta R.T.: -0.003 min
 Response: 73692157
 Conc: 463.93 ng/ml

Instrument :
 ECD_P
 ClientSampleId :
 AR1660CCC500



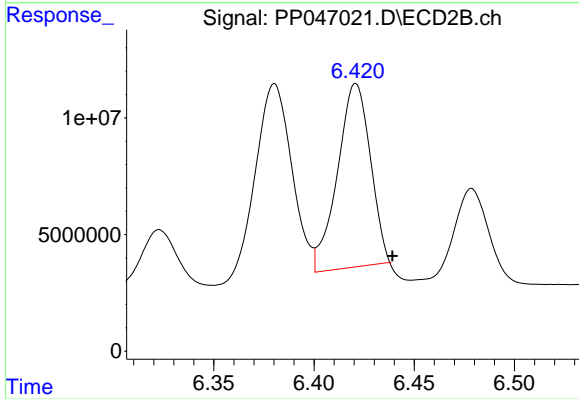
#35 AR-1260-5

R.T.: 6.968 min
 Delta R.T.: -0.002 min
 Response: 209833282
 Conc: 597.60 ng/ml



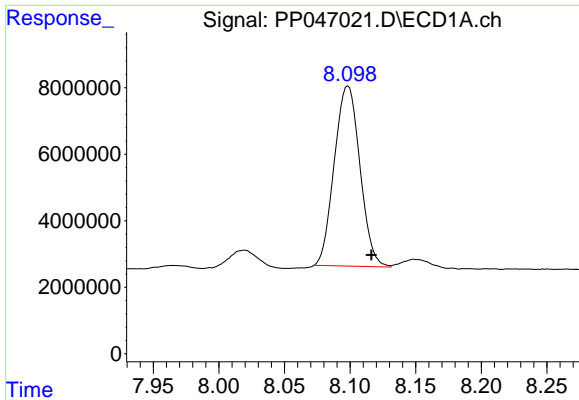
#36 AR-1262-1

R.T.: 7.510 min
 Delta R.T.: -0.018 min
 Response: 40107405
 Conc: 331.83 ng/ml



#36 AR-1262-1

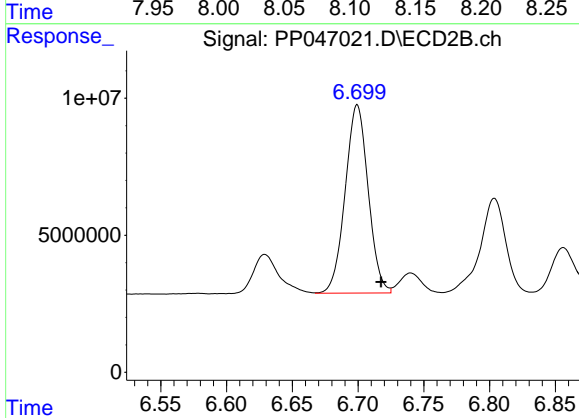
R.T.: 6.421 min
 Delta R.T.: -0.018 min
 Response: 90022996
 Conc: 364.42 ng/ml



#37 AR-1262-2

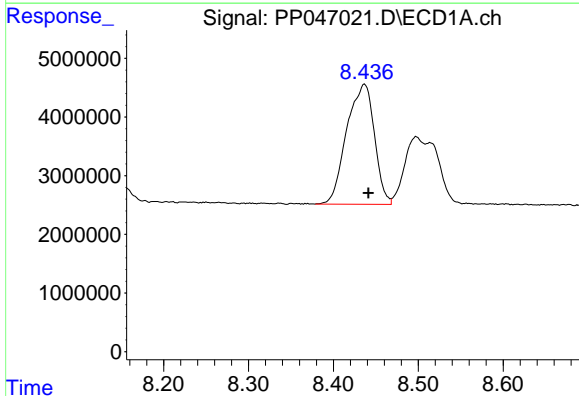
R.T.: 8.099 min
 Delta R.T.: -0.018 min
 Response: 73692157
 Conc: 383.20 ng/ml

Instrument :
 ECD_P
 ClientSampleId :
 AR1660CCC500



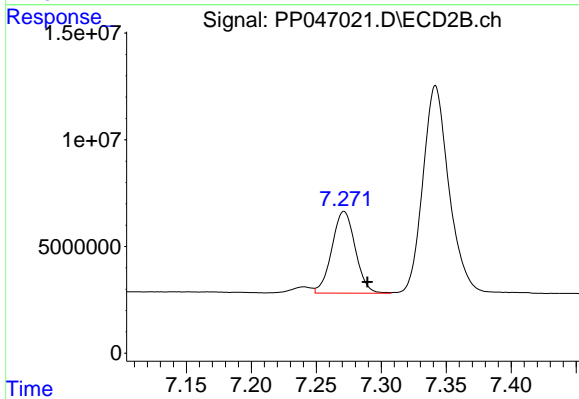
#37 AR-1262-2

R.T.: 6.699 min
 Delta R.T.: -0.018 min
 Response: 83664379
 Conc: 432.85 ng/ml



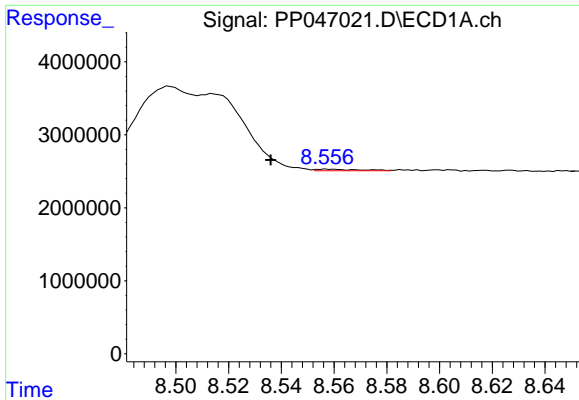
#38 AR-1262-3

R.T.: 8.437 min
 Delta R.T.: -0.004 min
 Response: 46425000
 Conc: 345.78 ng/ml



#38 AR-1262-3

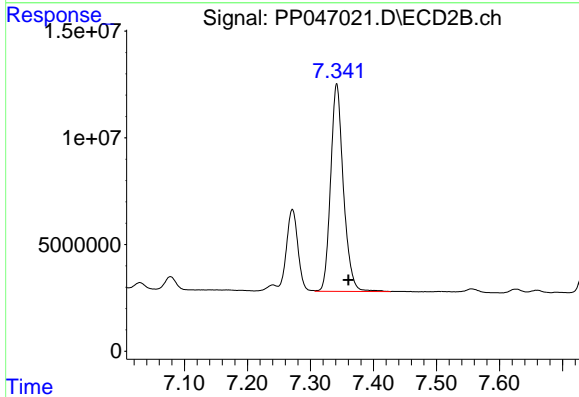
R.T.: 7.271 min
 Delta R.T.: -0.018 min
 Response: 47915455
 Conc: 295.11 ng/ml



#39 AR-1262-4

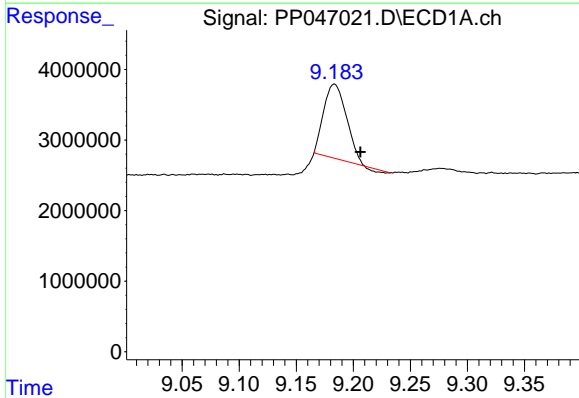
R.T.: 8.557 min
 Delta R.T.: 0.021 min
 Response: 241156
 Conc: 3.83 ng/ml

Instrument :
 ECD_P
 ClientSampleId :
 AR1660CCC500



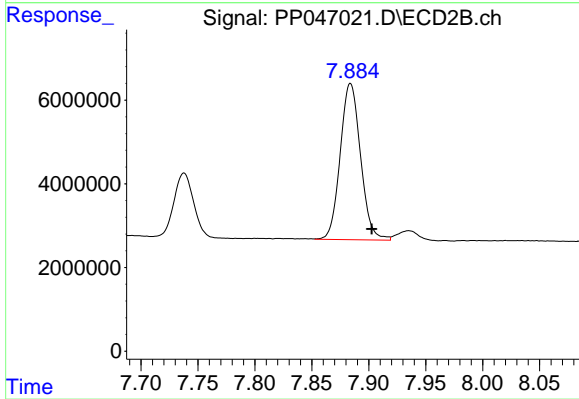
#39 AR-1262-4

R.T.: 7.342 min
 Delta R.T.: -0.019 min
 Response: 136809223
 Conc: 477.69 ng/ml



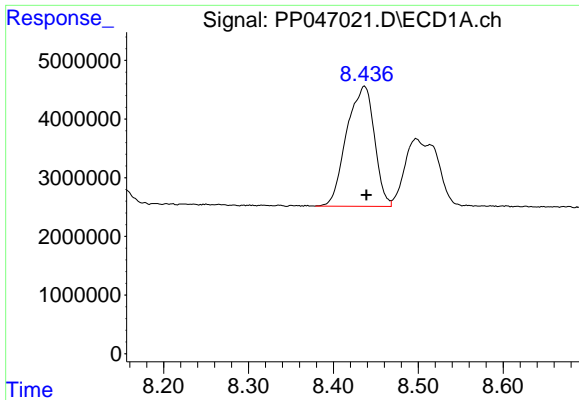
#40 AR-1262-5

R.T.: 9.184 min
 Delta R.T.: -0.023 min
 Response: 14370984
 Conc: 208.29 ng/ml



#40 AR-1262-5

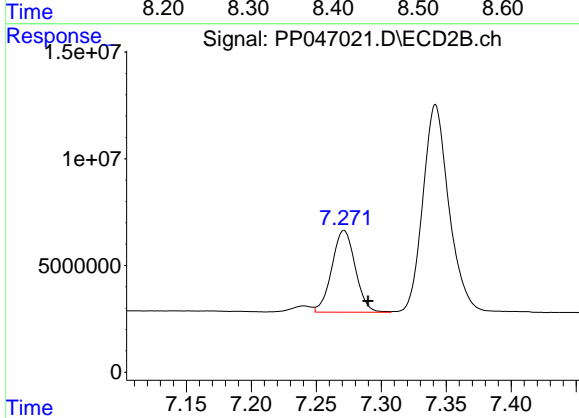
R.T.: 7.884 min
 Delta R.T.: -0.019 min
 Response: 46423942
 Conc: 353.82 ng/ml



#41 AR-1268-1

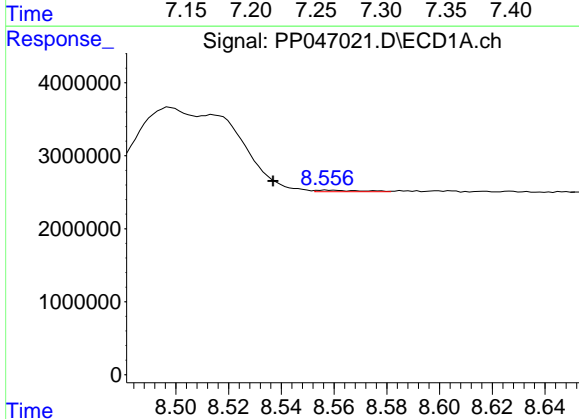
R.T.: 8.437 min
 Delta R.T.: -0.002 min
 Response: 46425000
 Conc: 193.13 ng/ml

Instrument :
 ECD_P
 ClientSampleId :
 AR1660CCC500



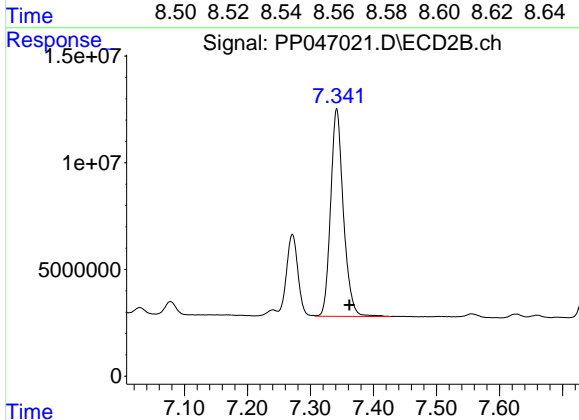
#41 AR-1268-1

R.T.: 7.271 min
 Delta R.T.: -0.018 min
 Response: 47915455
 Conc: 100.00 ng/ml



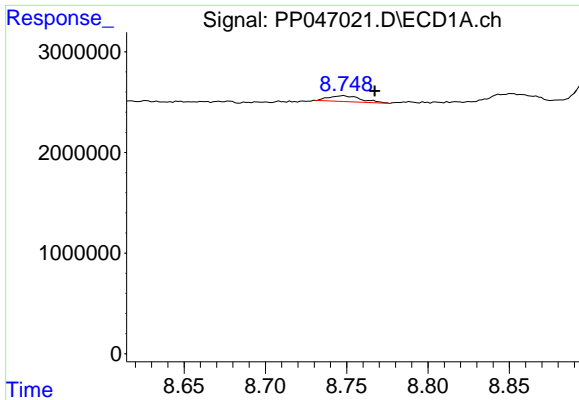
#42 AR-1268-2

R.T.: 8.557 min
 Delta R.T.: 0.020 min
 Response: 241156
 Conc: 1.09 ng/ml



#42 AR-1268-2

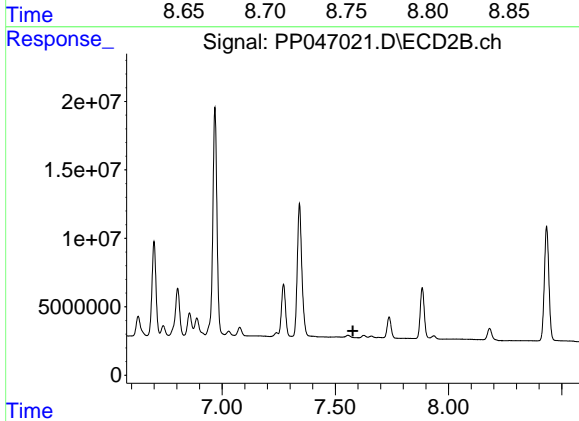
R.T.: 7.342 min
 Delta R.T.: -0.020 min
 Response: 136809223
 Conc: 323.01 ng/ml



#43 AR-1268-3

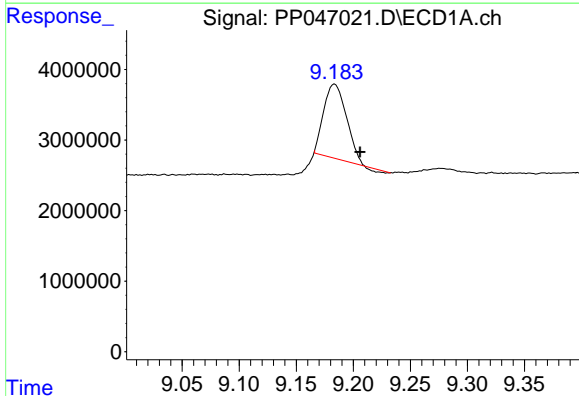
R.T.: 8.748 min
 Delta R.T.: -0.019 min
 Response: 808297
 Conc: 4.21 ng/ml

Instrument :
 ECD_P
 ClientSampleId :
 AR1660CCC500



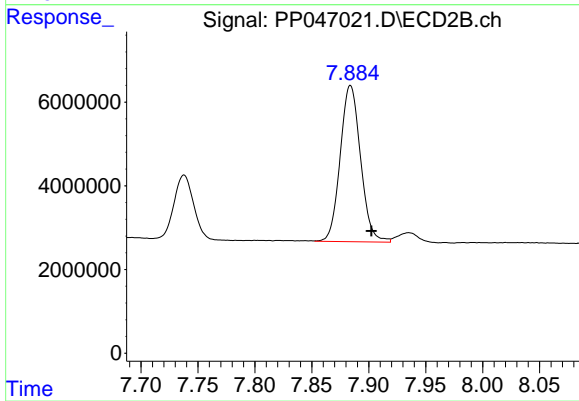
#43 AR-1268-3

R.T.: 0.000 min
 Exp R.T. : 7.578 min
 Response: 0
 Conc: N.D.



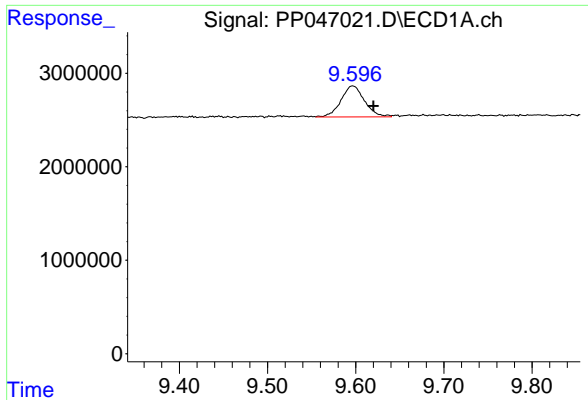
#44 AR-1268-4

R.T.: 9.184 min
 Delta R.T.: -0.022 min
 Response: 14370984
 Conc: 186.27 ng/ml



#44 AR-1268-4

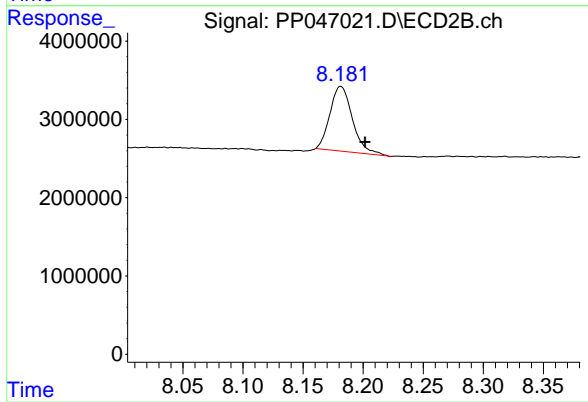
R.T.: 7.884 min
 Delta R.T.: -0.018 min
 Response: 46423942
 Conc: 315.68 ng/ml



#45 AR-1268-5

R.T.: 9.597 min
 Delta R.T.: -0.023 min
 Response: 6173248
 Conc: 11.02 ng/ml

Instrument :
 ECD_P
 ClientSampleId :
 AR1660CCC500



#45 AR-1268-5

R.T.: 8.181 min
 Delta R.T.: -0.020 min
 Response: 10796323
 Conc: 10.56 ng/ml