

Data Path : Z:\pestpcbsrv\HPCHEM1\ECD_P\Data\PP050423\
 Data File : PP057497.D
 Signal(s) : Signal #1: ECD1A.ch Signal #2: ECD2B.ch
 Acq On : 04 May 2023 11:58
 Operator : YP\AJ
 Sample : AR1660CCC500
 Misc :
 ALS Vial : 3 Sample Multiplier: 1

Instrument :
 ECD_P
 ClientSampleId :

Integration File signal 1: autoint1.e
 Integration File signal 2: autoint2.e
 Quant Time: May 04 21:00:18 2023
 Quant Method : Z:\pestpcbsrv\HPCHEM1\ECD_P\methods\PP050323.M
 Quant Title : GC EXTRACTABLES
 QLast Update : Thu May 04 07:27:39 2023
 Response via : Initial Calibration
 Integrator: ChemStation

Volume Inj. : 2 µl
 Signal #1 Phase : ZB-MR1 Signal #2 Phase: ZB-MR2
 Signal #1 Info : 30Mx0.32mmx 0.50µ Signal #2 Info : 30M x 0.32mm x 0.25µm

Compound	RT#1	RT#2	Resp#1	Resp#2	ng/ml	ng/ml
System Monitoring Compounds						
1) SA Tetrachlo...	4.392	3.625	107.2E6	104.5E6	51.558	51.583
2) SA Decachlor...	10.220	8.689	39694728	74305968	54.308	57.117
Target Compounds						
3) L1 AR-1016-1	5.571	4.723	28398314	33727732	519.250	526.841
4) L1 AR-1016-2	5.594	4.742	41161504	46577364	508.607	526.382
5) L1 AR-1016-3	5.657	4.920	26160266	28533572	522.240	565.907
6) L1 AR-1016-4	5.755	4.962	21017292	22446522	521.267	557.338
7) L1 AR-1016-5	6.053	5.178	21471575	28537285	525.765	558.722
8) L2 AR-1221-1	4.597	3.840	3784749	3604208	151.495	146.844
9) L2 AR-1221-2	4.689	3.928	5595914	5399570	302.744	288.890
10) L2 AR-1221-3	4.765	4.004	18532814	19070061	341.089	342.183
11) L3 AR-1232-1	4.765	4.004	18532814	19070061	456.359	459.856
12) L3 AR-1232-2	5.300	4.742	25105804	46577364	1072.698	1123.554
13) L3 AR-1232-3	5.594	4.920	41161504	28533572	1115.499	1198.405
14) L3 AR-1232-4	5.755	5.005	21017292	27433407	1158.721	1290.717
15) L3 AR-1232-5	5.848	5.178	19706486	28537285	1273.491	1200.100
16) L4 AR-1242-1	5.571	4.723	28398314	33727732	657.658	665.068
17) L4 AR-1242-2	5.594	4.742	41161504	46577364	656.572	670.986
18) L4 AR-1242-3	5.657	4.920	26160266	28533572	665.902	704.315
19) L4 AR-1242-4	5.755	5.005	21017292	27433407	660.235	682.264
20) L4 AR-1242-5	6.499	5.534	3073596	22814948	110.535	464.847 #
21) L5 AR-1248-1	5.594	4.723	41161504	33727732	1066.032	738.356 #
22) L5 AR-1248-2	5.848f	4.962	19706486	22446522	335.108	351.199
23) L5 AR-1248-3	6.053f	5.005	21471575	27433407	346.425	407.172
24) L5 AR-1248-4	6.434f	5.178	19281783	28537285	343.846	361.075
25) L5 AR-1248-5	6.499f	5.575	3073596	4659712	55.164	62.443
26) L6 AR-1254-1	6.434	5.534	19281783	22814948	314.625	227.351 #
27) L6 AR-1254-2	6.654	5.682	15921789	21519986	186.953	242.024 #
28) L6 AR-1254-3	7.024	6.105	7934330	36366381	99.321	259.675 #
29) L6 AR-1254-4	7.313	6.321	5499367	4528013	98.506	53.094 #
30) L6 AR-1254-5	7.734	6.742	41063947	67191209	675.140	513.763
31) L7 AR-1260-1	7.190	6.222	35364881	49463532	495.694	531.473
32) L7 AR-1260-2	7.450	6.411	34736187	57497651	538.659	540.841
33) L7 AR-1260-3	7.813	6.566	23044424	55981263	555.435	537.797
34) L7 AR-1260-4	8.039	7.042	27521483	40558973	542.357	550.992
35) L7 AR-1260-5	8.363	7.284	44968371	89648027	541.797	567.162
36) L8 AR-1262-1	7.813	6.834	23044424	24955314	327.934	456.129 #
37) L8 AR-1262-2	8.363	7.042	44968371	40558973	427.646	369.874
38) L8 AR-1262-3	8.692	7.570	28898668	18960898	401.025	226.422 #
39) L8 AR-1262-4	8.771	7.634	6243754	66171237	115.257	440.931 #
40) L8 AR-1262-5	9.442	8.133	9894408	20651310	294.476	302.033
41) L9 AR-1268-1	8.692	7.570	28898668	18960898	228.592	77.260 #

Data Path : Z:\pestpcbsrv\HPCHEM1\ECD_P\Data\PP050423\
 Data File : PP057497.D
 Signal(s) : Signal #1: ECD1A.ch Signal #2: ECD2B.ch
 Acq On : 04 May 2023 11:58
 Operator : YP\AJ
 Sample : AR1660CCC500
 Misc :
 ALS Vial : 3 Sample Multiplier: 1

Instrument :
 ECD_P
 ClientSampleId :

Integration File signal 1: autoint1.e
 Integration File signal 2: autoint2.e
 Quant Time: May 04 21:00:18 2023
 Quant Method : Z:\pestpcbsrv\HPCHEM1\ECD_P\methods\PP050323.M
 Quant Title : GC EXTRACTABLES
 QLast Update : Thu May 04 07:27:39 2023
 Response via : Initial Calibration
 Integrator: ChemStation

Volume Inj. : 2 µl
 Signal #1 Phase : ZB-MR1 Signal #2 Phase: ZB-MR2
 Signal #1 Info : 30Mx0.32mmx 0.50µ Signal #2 Info : 30M x 0.32mm x 0.25µm

	Compound	RT#1	RT#2	Resp#1	Resp#2	ng/ml	ng/ml
42)	L9 AR-1268-2	8.771	7.634	6243754	66171237	57.121	302.781 #
43)	L9 AR-1268-3	9.003	7.844	921664	1941729	9.189	10.194
44)	L9 AR-1268-4	9.442	8.133	9894408	20651310	266.303	268.629
45)	L9 AR-1268-5	9.868	8.429	3028308	7652931	11.846	15.120 #

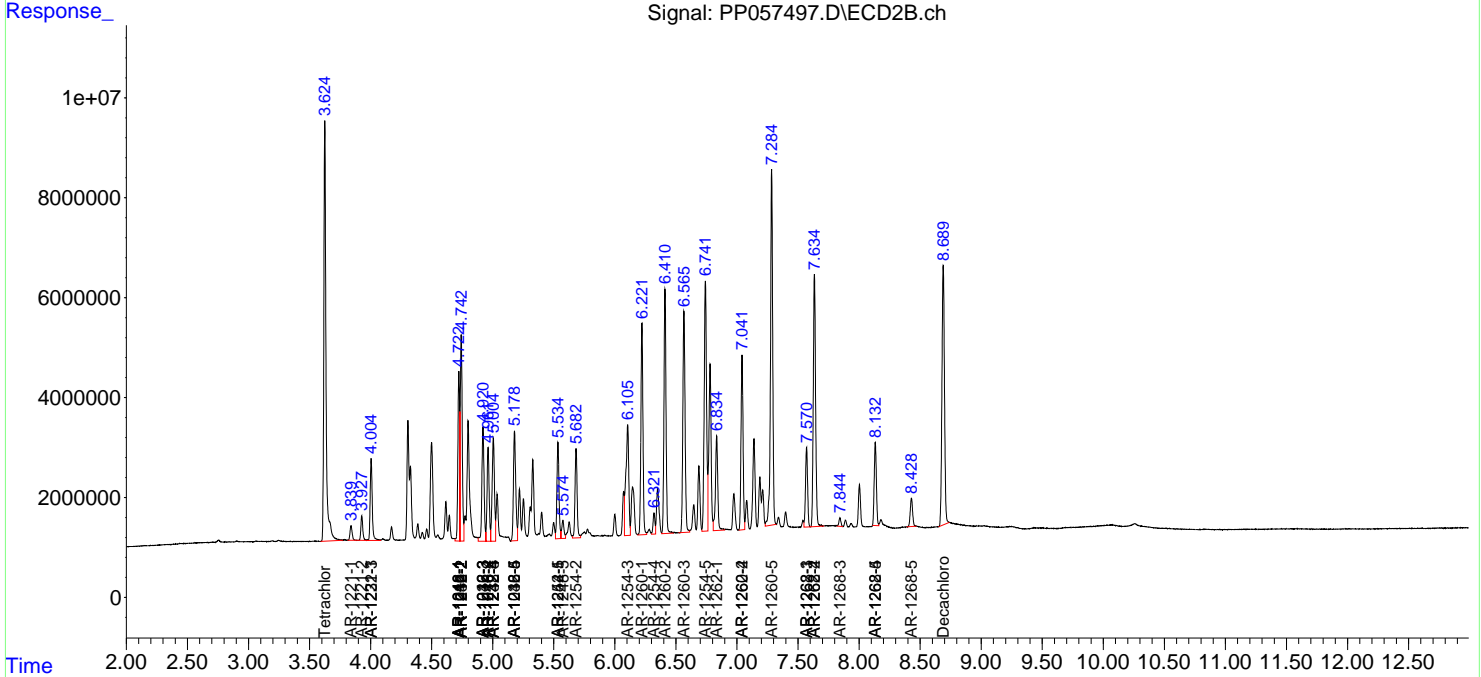
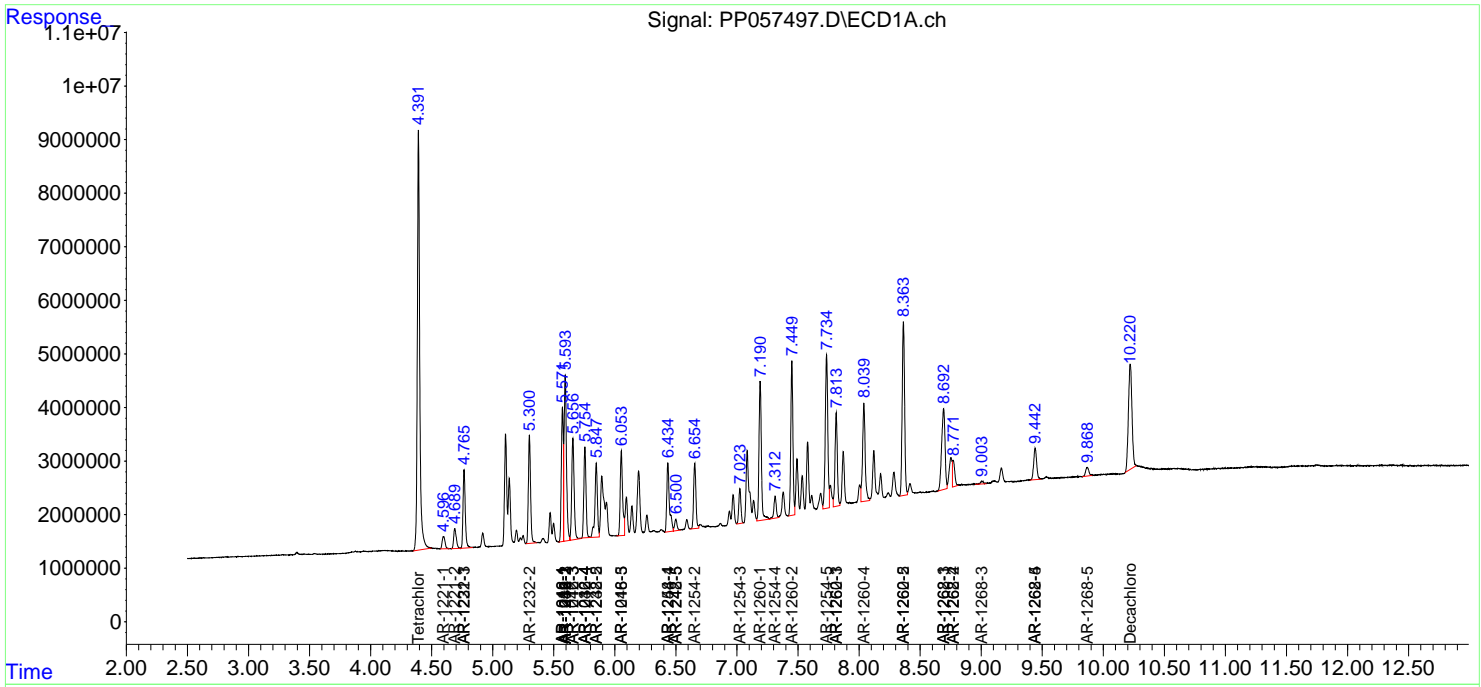
(f)=RT Delta > 1/2 Window (#)=Amounts differ by > 25% (m)=manual int.

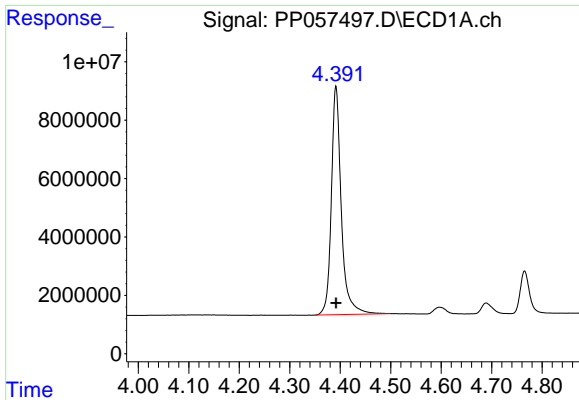
Data Path : Z:\pestpcbsrv\HPCHEM1\ECD_P\Data\PP050423\
 Data File : PP057497.D
 Signal(s) : Signal #1: ECD1A.ch Signal #2: ECD2B.ch
 Acq On : 04 May 2023 11:58
 Operator : YP\AJ
 Sample : AR1660CCC500
 Misc :
 ALS Vial : 3 Sample Multiplier: 1

Instrument :
 ECD_P
 ClientSampleId :

Integration File signal 1: autoint1.e
 Integration File signal 2: autoint2.e
 Quant Time: May 04 21:00:18 2023
 Quant Method : Z:\pestpcbsrv\HPCHEM1\ECD_P\methods\PP050323.M
 Quant Title : GC EXTRACTABLES
 QLast Update : Thu May 04 07:27:39 2023
 Response via : Initial Calibration
 Integrator: ChemStation

Volume Inj. : 2 µl
 Signal #1 Phase : ZB-MR1 Signal #2 Phase: ZB-MR2
 Signal #1 Info : 30Mx0.32mmx 0.50µ Signal #2 Info : 30M x 0.32mm x 0.25µm

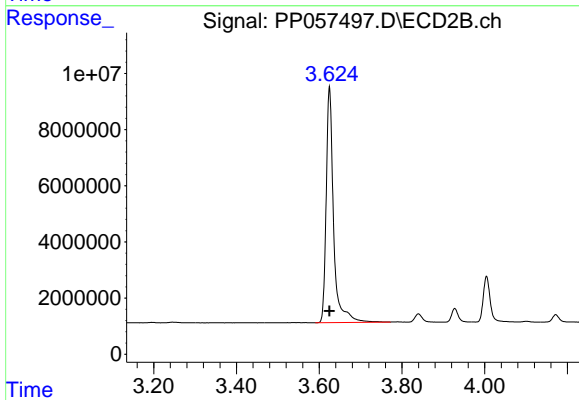




#1 Tetrachloro-m-xylene

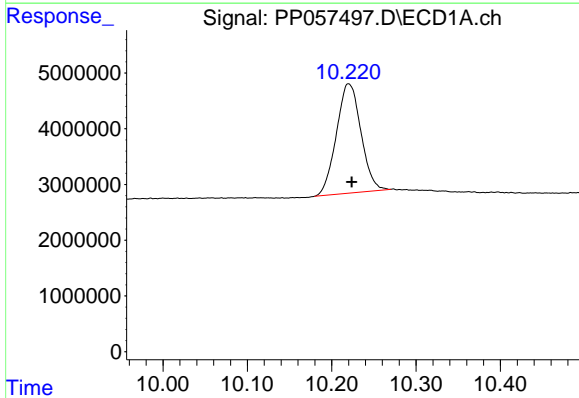
R.T.: 4.392 min
 Delta R.T.: 0.000 min
 Response: 107235298
 Conc: 51.56 ng/ml

Instrument :
 ECD_P
 ClientSampleId :



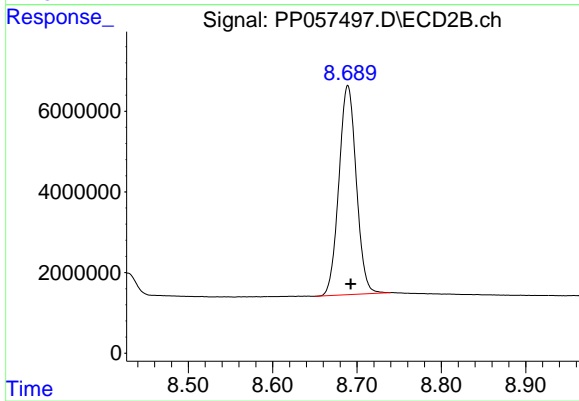
#1 Tetrachloro-m-xylene

R.T.: 3.625 min
 Delta R.T.: 0.000 min
 Response: 104481645
 Conc: 51.58 ng/ml



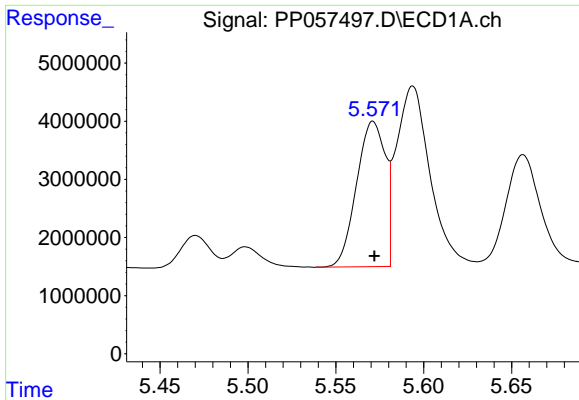
#2 Decachlorobiphenyl

R.T.: 10.220 min
 Delta R.T.: -0.004 min
 Response: 39694728
 Conc: 54.31 ng/ml



#2 Decachlorobiphenyl

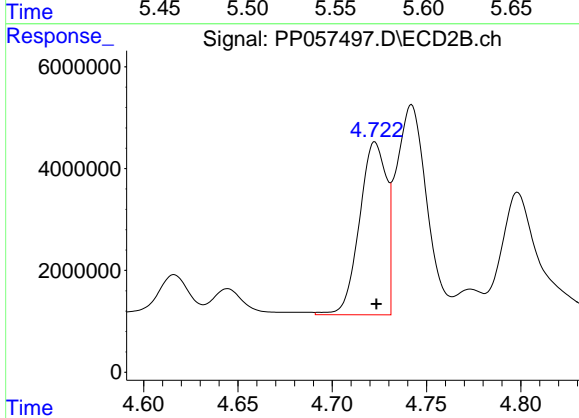
R.T.: 8.689 min
 Delta R.T.: -0.004 min
 Response: 74305968
 Conc: 57.12 ng/ml



#3 AR-1016-1

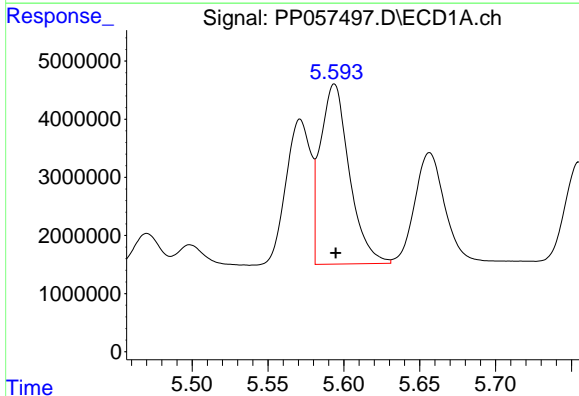
R.T.: 5.571 min
 Delta R.T.: 0.000 min
 Response: 28398314
 Conc: 519.25 ng/ml

Instrument :
 ECD_P
 ClientSampleId :



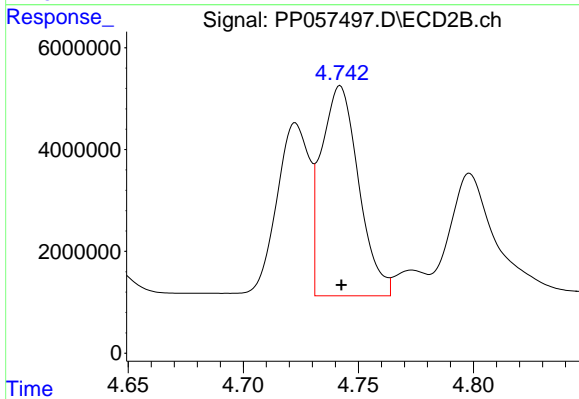
#3 AR-1016-1

R.T.: 4.723 min
 Delta R.T.: 0.000 min
 Response: 33727732
 Conc: 526.84 ng/ml



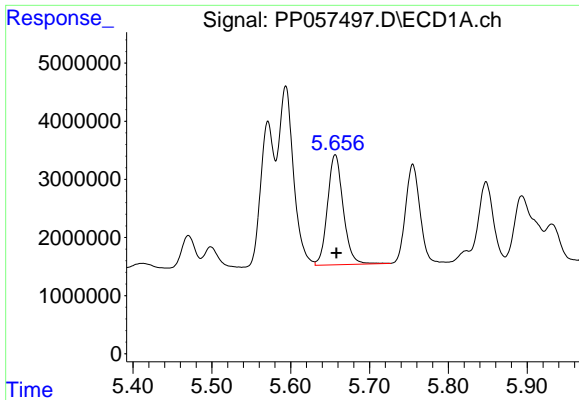
#4 AR-1016-2

R.T.: 5.594 min
 Delta R.T.: 0.000 min
 Response: 41161504
 Conc: 508.61 ng/ml



#4 AR-1016-2

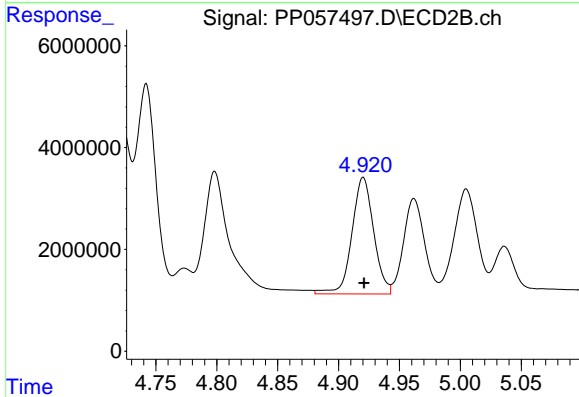
R.T.: 4.742 min
 Delta R.T.: 0.000 min
 Response: 46577364
 Conc: 526.38 ng/ml



#5 AR-1016-3

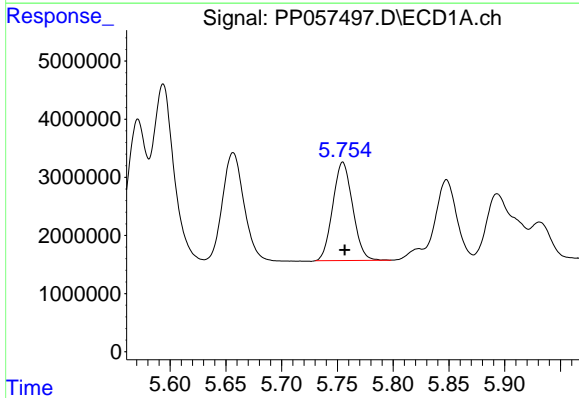
R.T.: 5.657 min
 Delta R.T.: -0.001 min
 Response: 26160266
 Conc: 522.24 ng/ml

Instrument :
 ECD_P
 ClientSampleId :



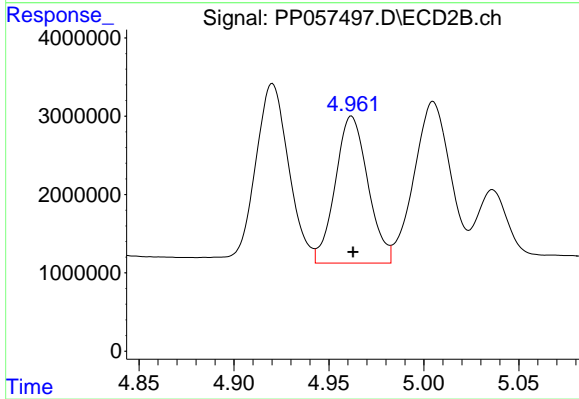
#5 AR-1016-3

R.T.: 4.920 min
 Delta R.T.: 0.000 min
 Response: 28533572
 Conc: 565.91 ng/ml



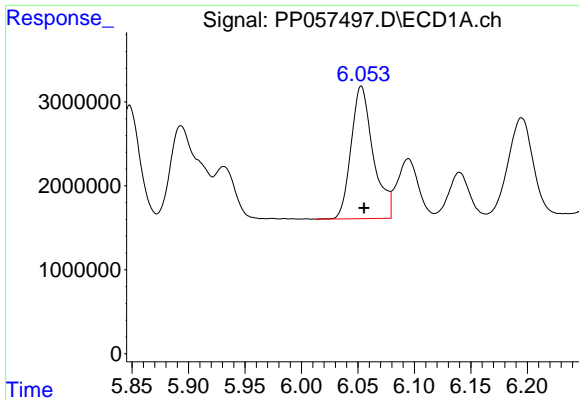
#6 AR-1016-4

R.T.: 5.755 min
 Delta R.T.: -0.002 min
 Response: 21017292
 Conc: 521.27 ng/ml



#6 AR-1016-4

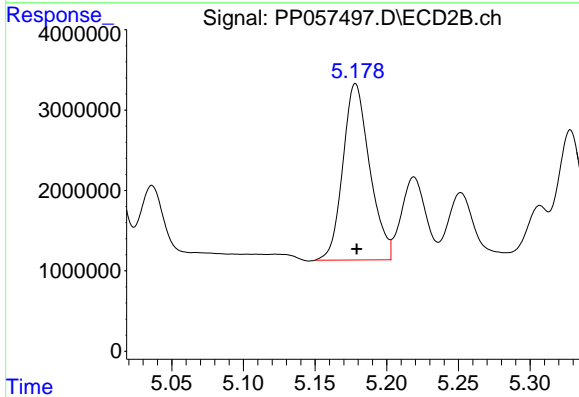
R.T.: 4.962 min
 Delta R.T.: 0.000 min
 Response: 22446522
 Conc: 557.34 ng/ml



#7 AR-1016-5

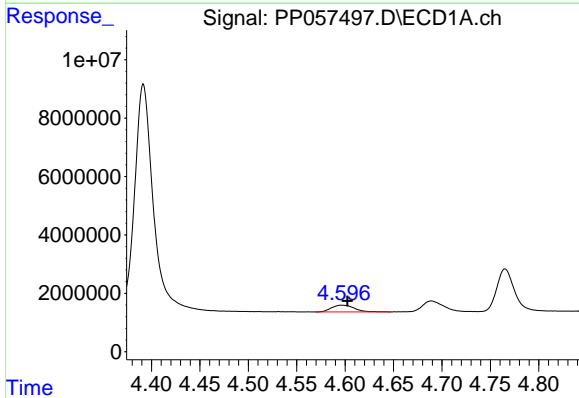
R.T.: 6.053 min
 Delta R.T.: -0.002 min
 Response: 21471575
 Conc: 525.76 ng/ml

Instrument :
 ECD_P
 ClientSampleId :



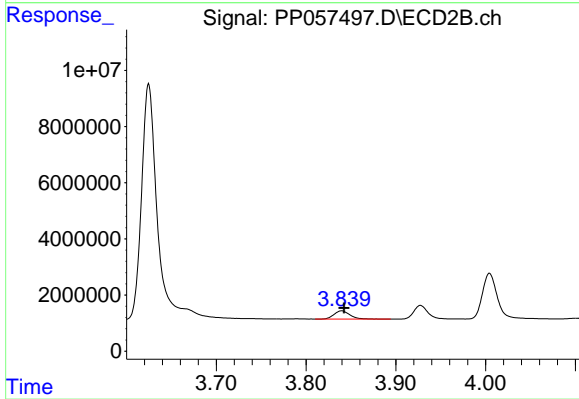
#7 AR-1016-5

R.T.: 5.178 min
 Delta R.T.: 0.000 min
 Response: 28537285
 Conc: 558.72 ng/ml



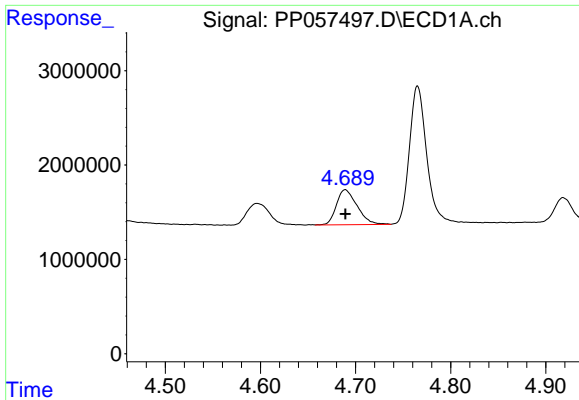
#8 AR-1221-1

R.T.: 4.597 min
 Delta R.T.: -0.006 min
 Response: 3784749
 Conc: 151.49 ng/ml



#8 AR-1221-1

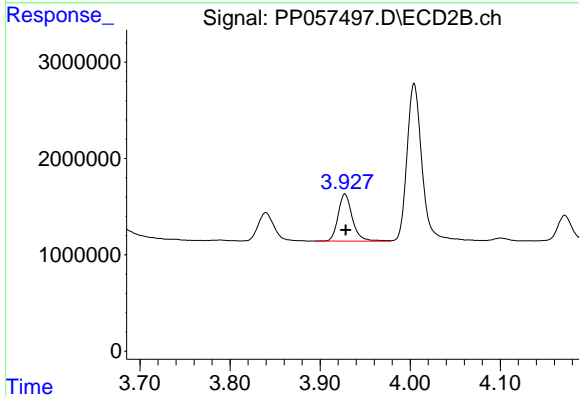
R.T.: 3.840 min
 Delta R.T.: -0.003 min
 Response: 3604208
 Conc: 146.84 ng/ml



#9 AR-1221-2

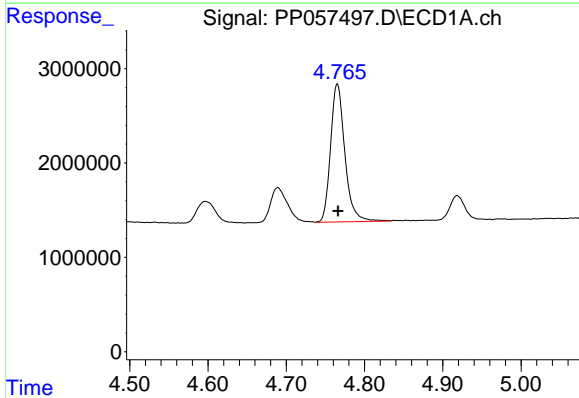
R.T.: 4.689 min
 Delta R.T.: 0.000 min
 Response: 5595914
 Conc: 302.74 ng/ml

Instrument :
 ECD_P
 ClientSampleId :



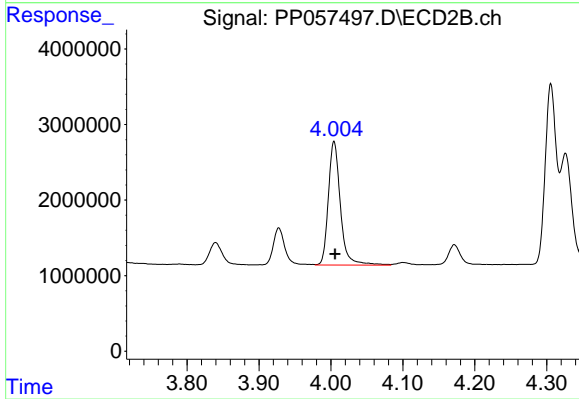
#9 AR-1221-2

R.T.: 3.928 min
 Delta R.T.: 0.000 min
 Response: 5399570
 Conc: 288.89 ng/ml



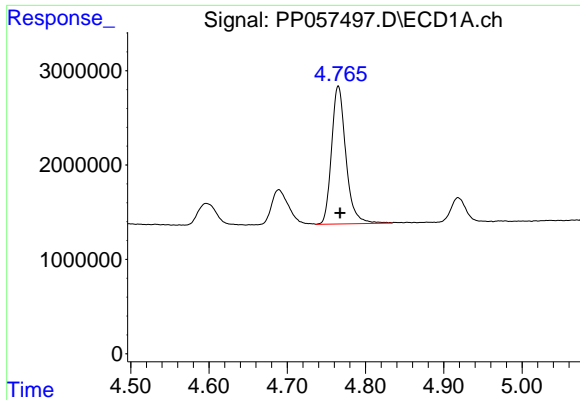
#10 AR-1221-3

R.T.: 4.765 min
 Delta R.T.: -0.001 min
 Response: 18532814
 Conc: 341.09 ng/ml



#10 AR-1221-3

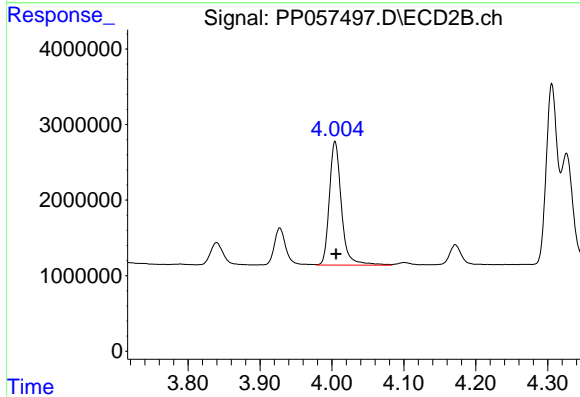
R.T.: 4.004 min
 Delta R.T.: -0.001 min
 Response: 19070061
 Conc: 342.18 ng/ml



#11 AR-1232-1

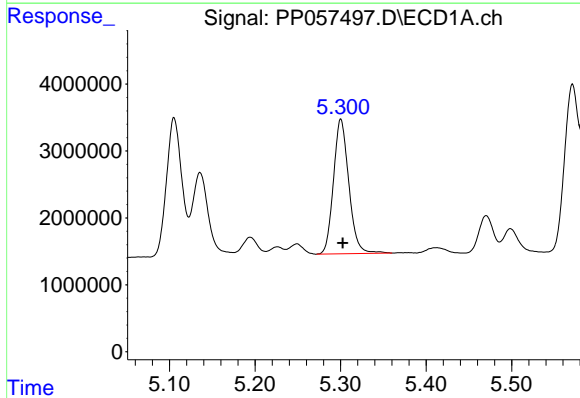
R.T.: 4.765 min
Delta R.T.: -0.002 min
Response: 18532814
Conc: 456.36 ng/ml

Instrument :
ECD_P
ClientSampleId :



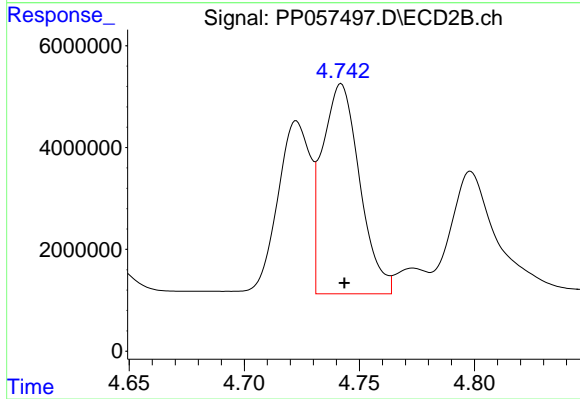
#11 AR-1232-1

R.T.: 4.004 min
Delta R.T.: -0.001 min
Response: 19070061
Conc: 459.86 ng/ml



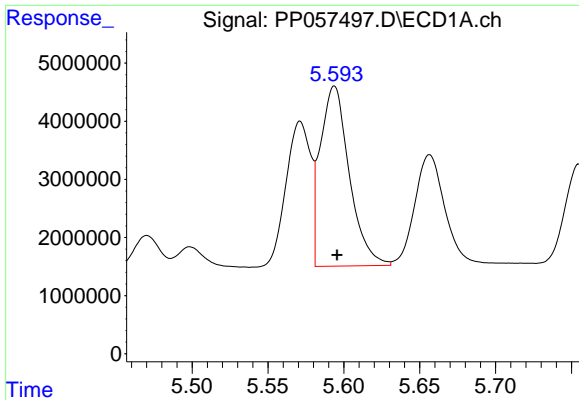
#12 AR-1232-2

R.T.: 5.300 min
Delta R.T.: -0.002 min
Response: 25105804
Conc: 1072.70 ng/ml



#12 AR-1232-2

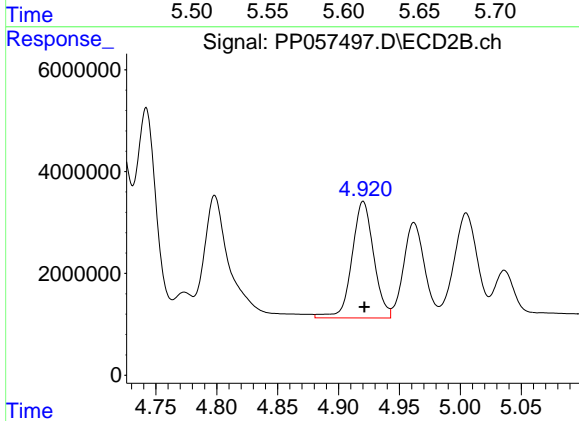
R.T.: 4.742 min
Delta R.T.: -0.001 min
Response: 46577364
Conc: 1123.55 ng/ml



#13 AR-1232-3

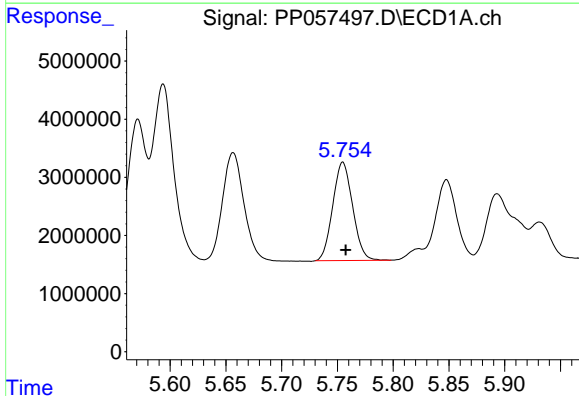
R.T.: 5.594 min
 Delta R.T.: -0.002 min
 Response: 41161504
 Conc: 1115.50 ng/ml

Instrument :
 ECD_P
 ClientSampleId :



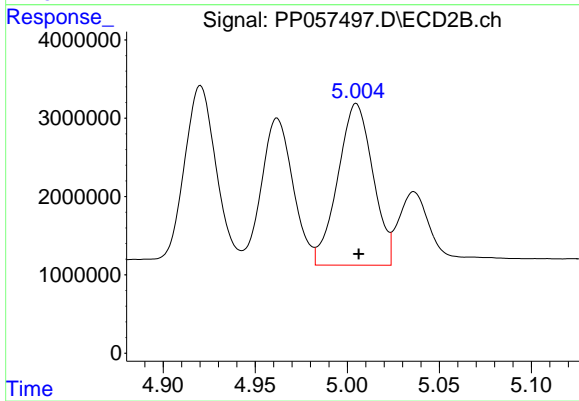
#13 AR-1232-3

R.T.: 4.920 min
 Delta R.T.: -0.001 min
 Response: 28533572
 Conc: 1198.41 ng/ml



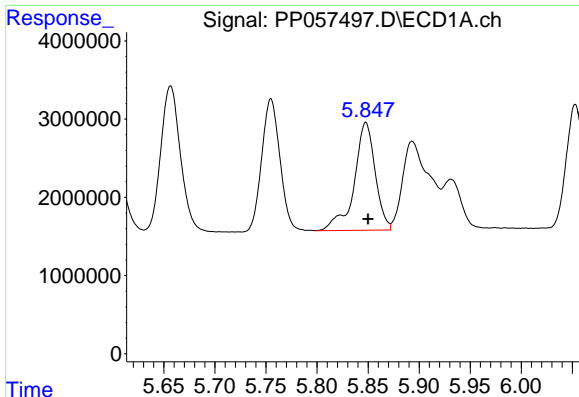
#14 AR-1232-4

R.T.: 5.755 min
 Delta R.T.: -0.003 min
 Response: 21017292
 Conc: 1158.72 ng/ml



#14 AR-1232-4

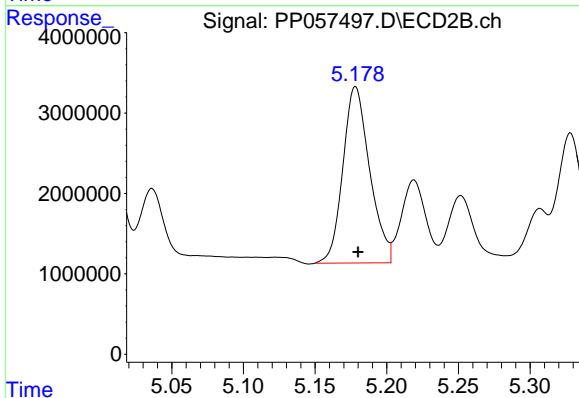
R.T.: 5.005 min
 Delta R.T.: -0.001 min
 Response: 27433407
 Conc: 1290.72 ng/ml



#15 AR-1232-5

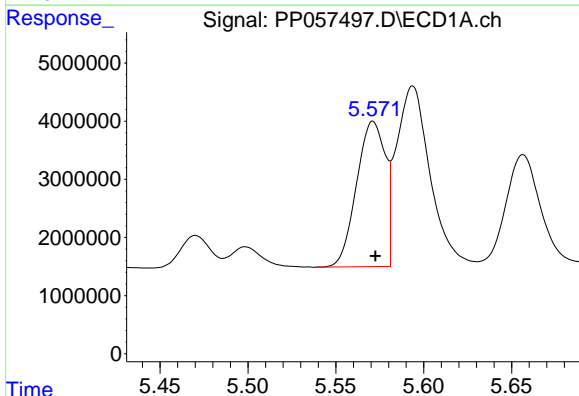
R.T.: 5.848 min
 Delta R.T.: -0.002 min
 Response: 19706486
 Conc: 1273.49 ng/ml

Instrument :
 ECD_P
 ClientSampleId :



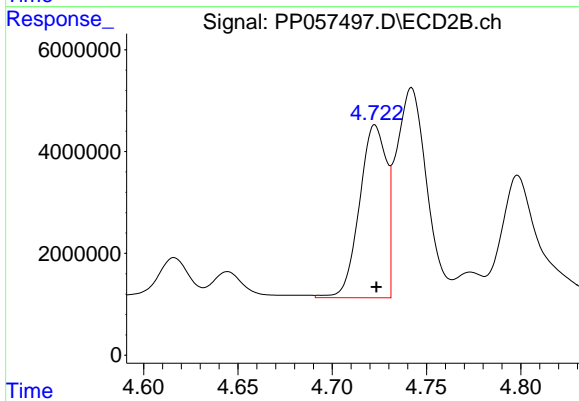
#15 AR-1232-5

R.T.: 5.178 min
 Delta R.T.: -0.002 min
 Response: 28537285
 Conc: 1200.10 ng/ml



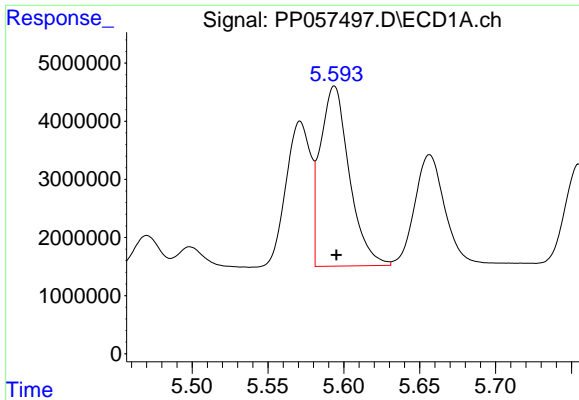
#16 AR-1242-1

R.T.: 5.571 min
 Delta R.T.: -0.001 min
 Response: 28398314
 Conc: 657.66 ng/ml



#16 AR-1242-1

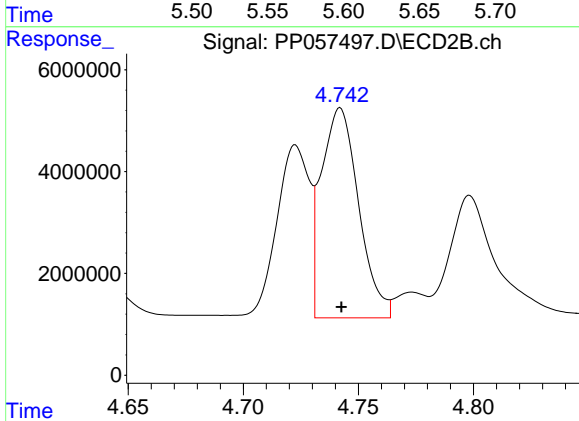
R.T.: 4.723 min
 Delta R.T.: 0.000 min
 Response: 33727732
 Conc: 665.07 ng/ml



#17 AR-1242-2

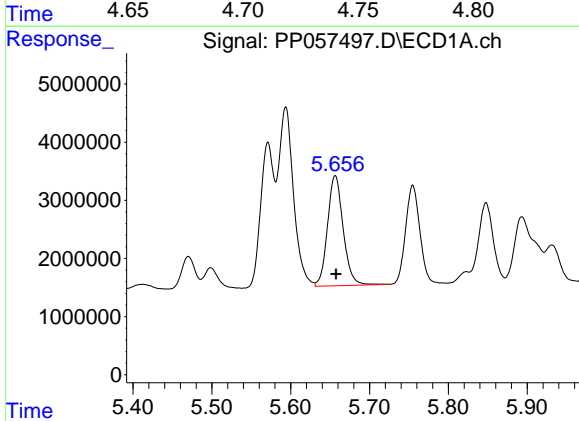
R.T.: 5.594 min
 Delta R.T.: -0.001 min
 Response: 41161504
 Conc: 656.57 ng/ml

Instrument :
 ECD_P
 ClientSampleId :



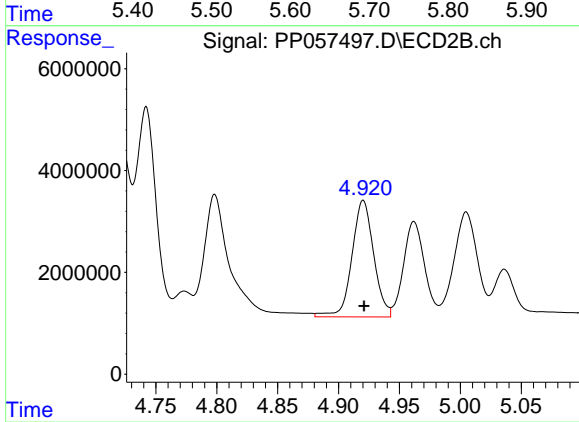
#17 AR-1242-2

R.T.: 4.742 min
 Delta R.T.: 0.000 min
 Response: 46577364
 Conc: 670.99 ng/ml



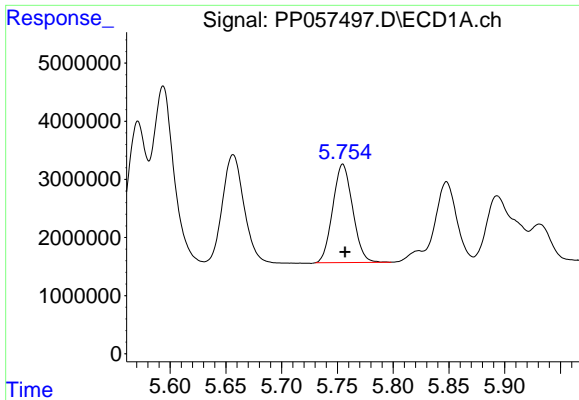
#18 AR-1242-3

R.T.: 5.657 min
 Delta R.T.: 0.000 min
 Response: 26160266
 Conc: 665.90 ng/ml



#18 AR-1242-3

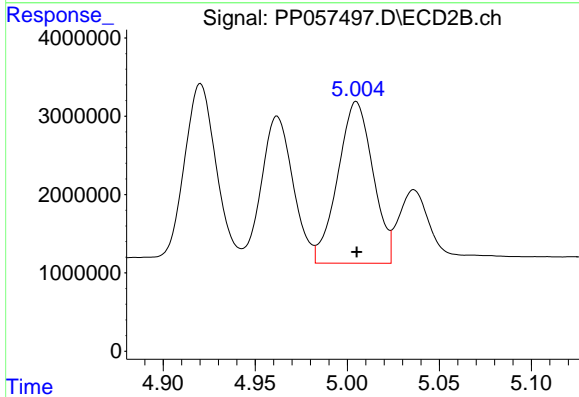
R.T.: 4.920 min
 Delta R.T.: 0.000 min
 Response: 28533572
 Conc: 704.32 ng/ml



#19 AR-1242-4

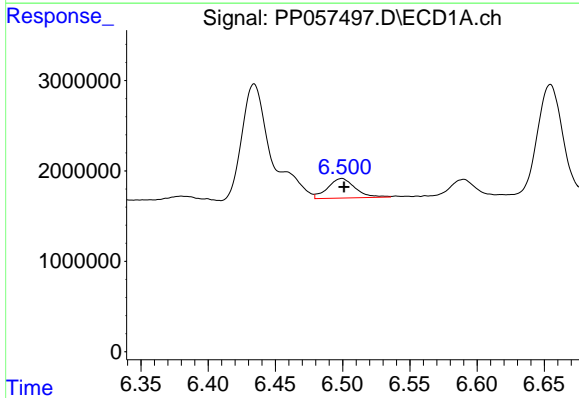
R.T.: 5.755 min
 Delta R.T.: -0.002 min
 Response: 21017292
 Conc: 660.24 ng/ml

Instrument :
 ECD_P
 ClientSampleId :



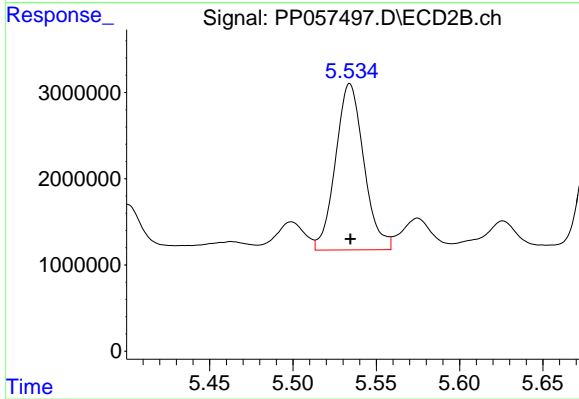
#19 AR-1242-4

R.T.: 5.005 min
 Delta R.T.: 0.000 min
 Response: 27433407
 Conc: 682.26 ng/ml



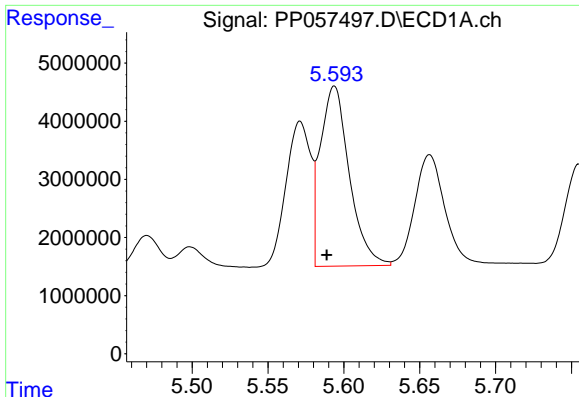
#20 AR-1242-5

R.T.: 6.499 min
 Delta R.T.: -0.002 min
 Response: 3073596
 Conc: 110.53 ng/ml



#20 AR-1242-5

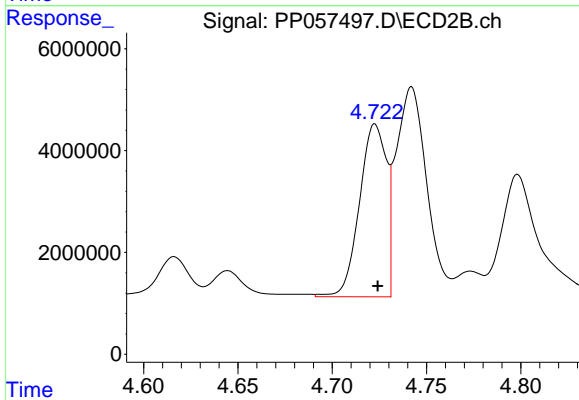
R.T.: 5.534 min
 Delta R.T.: 0.000 min
 Response: 22814948
 Conc: 464.85 ng/ml



#21 AR-1248-1

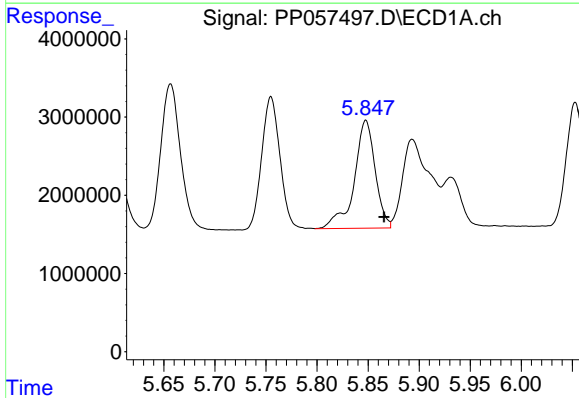
R.T.: 5.594 min
 Delta R.T.: 0.005 min
 Response: 41161504
 Conc: 1066.03 ng/ml

Instrument :
 ECD_P
 ClientSampleId :



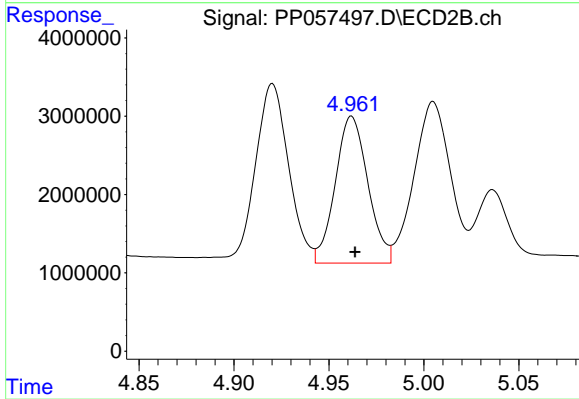
#21 AR-1248-1

R.T.: 4.723 min
 Delta R.T.: -0.001 min
 Response: 33727732
 Conc: 738.36 ng/ml



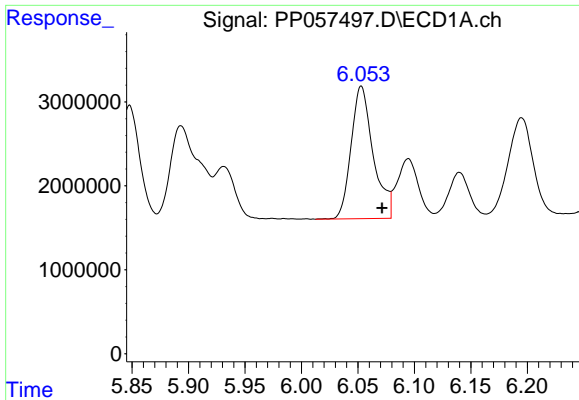
#22 AR-1248-2

R.T.: 5.848 min
 Delta R.T.: -0.018 min
 Response: 19706486
 Conc: 335.11 ng/ml



#22 AR-1248-2

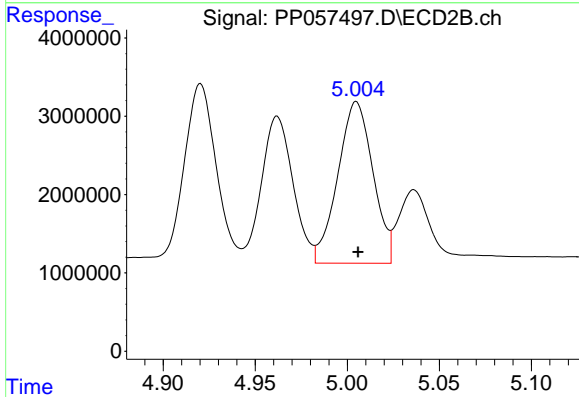
R.T.: 4.962 min
 Delta R.T.: -0.002 min
 Response: 22446522
 Conc: 351.20 ng/ml



#23 AR-1248-3

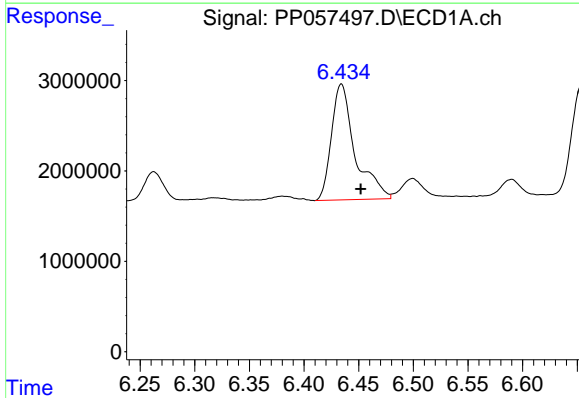
R.T.: 6.053 min
 Delta R.T.: -0.019 min
 Response: 21471575
 Conc: 346.43 ng/ml

Instrument :
 ECD_P
 ClientSampleId :



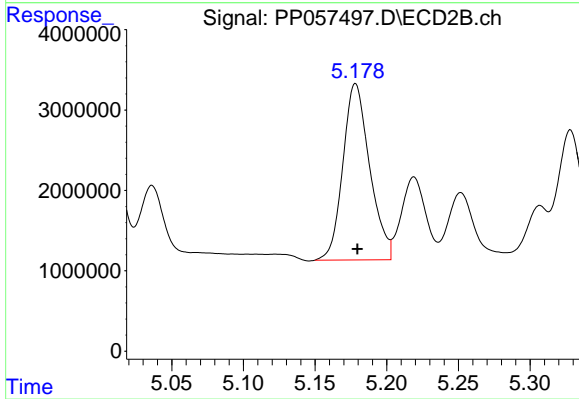
#23 AR-1248-3

R.T.: 5.005 min
 Delta R.T.: 0.000 min
 Response: 27433407
 Conc: 407.17 ng/ml



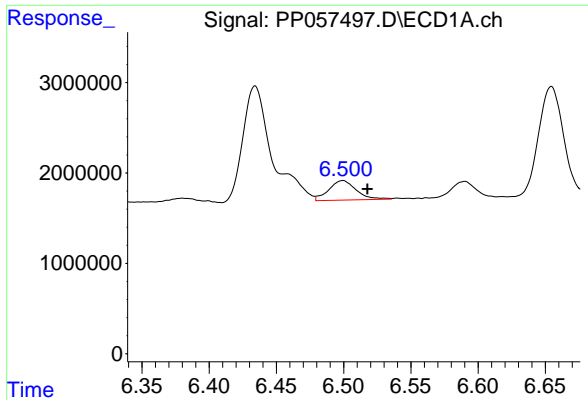
#24 AR-1248-4

R.T.: 6.434 min
 Delta R.T.: -0.018 min
 Response: 19281783
 Conc: 343.85 ng/ml



#24 AR-1248-4

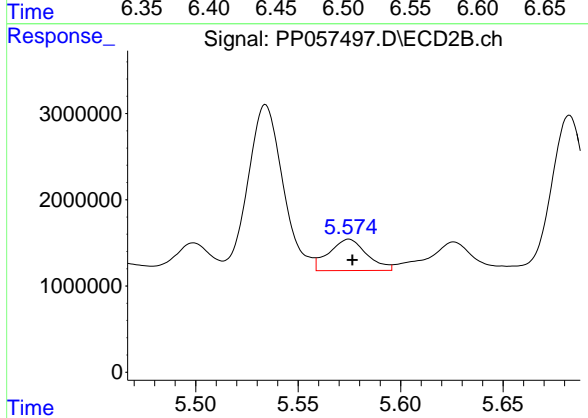
R.T.: 5.178 min
 Delta R.T.: -0.001 min
 Response: 28537285
 Conc: 361.07 ng/ml



#25 AR-1248-5

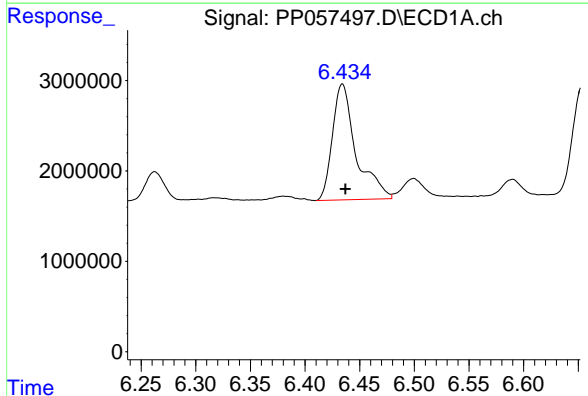
R.T.: 6.499 min
Delta R.T.: -0.018 min
Response: 3073596
Conc: 55.16 ng/ml

Instrument :
ECD_P
ClientSampleId :



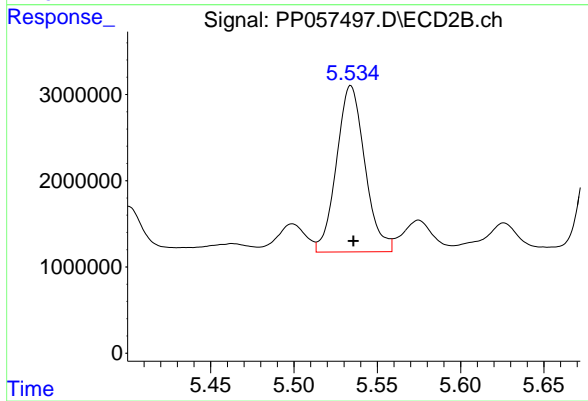
#25 AR-1248-5

R.T.: 5.575 min
Delta R.T.: -0.002 min
Response: 4659712
Conc: 62.44 ng/ml



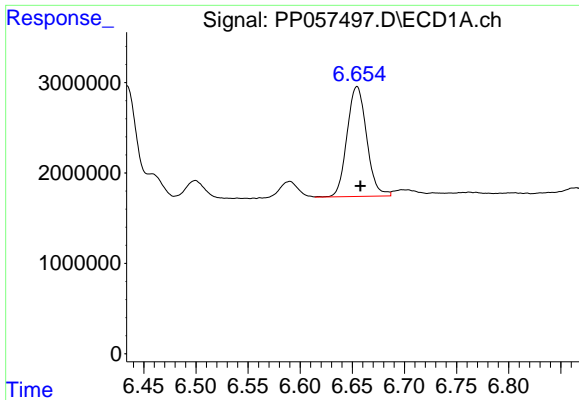
#26 AR-1254-1

R.T.: 6.434 min
Delta R.T.: -0.003 min
Response: 19281783
Conc: 314.62 ng/ml



#26 AR-1254-1

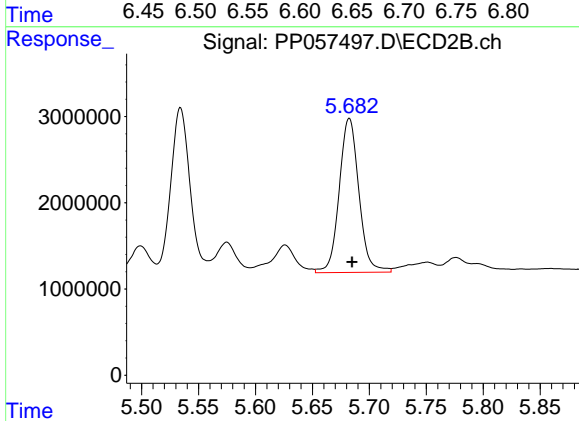
R.T.: 5.534 min
Delta R.T.: -0.002 min
Response: 22814948
Conc: 227.35 ng/ml



#27 AR-1254-2

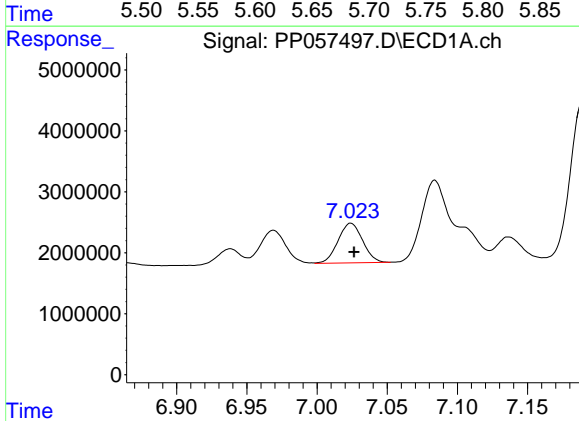
R.T.: 6.654 min
 Delta R.T.: -0.003 min
 Response: 15921789
 Conc: 186.95 ng/ml

Instrument :
 ECD_P
 ClientSampleId :



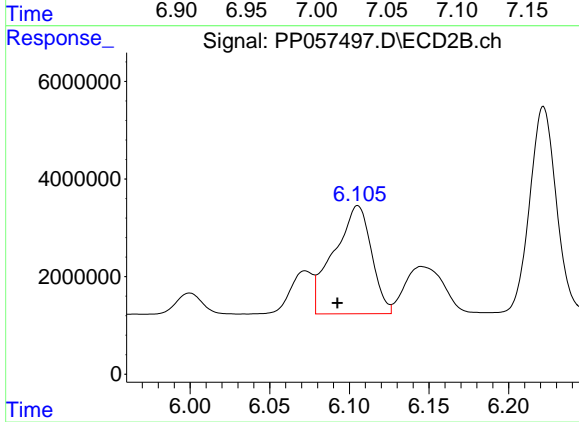
#27 AR-1254-2

R.T.: 5.682 min
 Delta R.T.: -0.002 min
 Response: 21519986
 Conc: 242.02 ng/ml



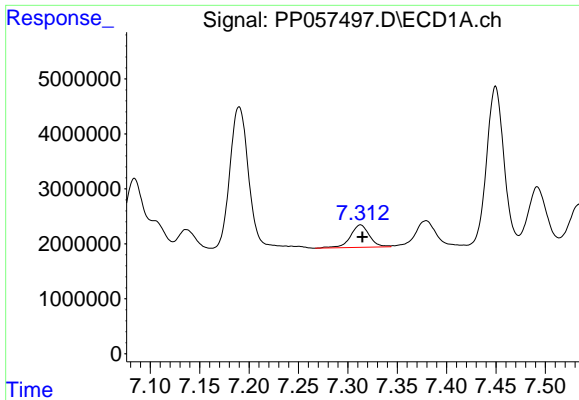
#28 AR-1254-3

R.T.: 7.024 min
 Delta R.T.: -0.002 min
 Response: 7934330
 Conc: 99.32 ng/ml



#28 AR-1254-3

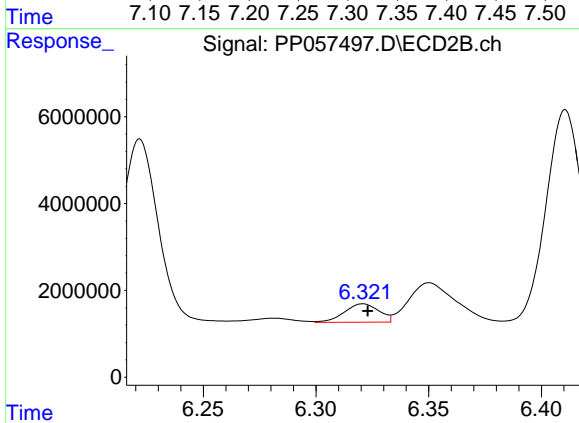
R.T.: 6.105 min
 Delta R.T.: 0.013 min
 Response: 36366381
 Conc: 259.67 ng/ml



#29 AR-1254-4

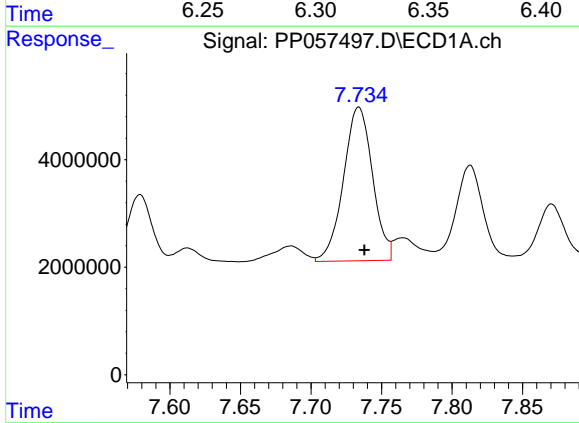
R.T.: 7.313 min
 Delta R.T.: -0.002 min
 Response: 5499367
 Conc: 98.51 ng/ml

Instrument :
 ECD_P
 ClientSampleId :



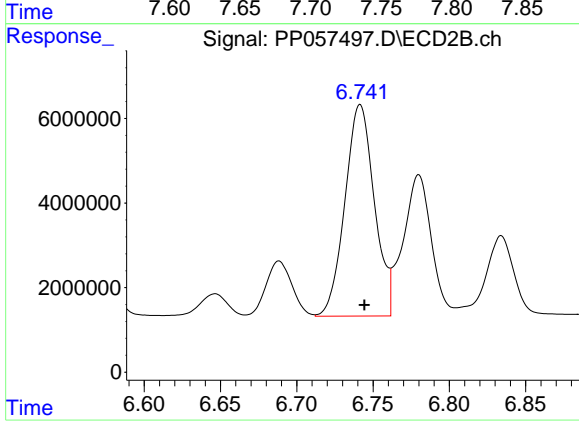
#29 AR-1254-4

R.T.: 6.321 min
 Delta R.T.: -0.002 min
 Response: 4528013
 Conc: 53.09 ng/ml



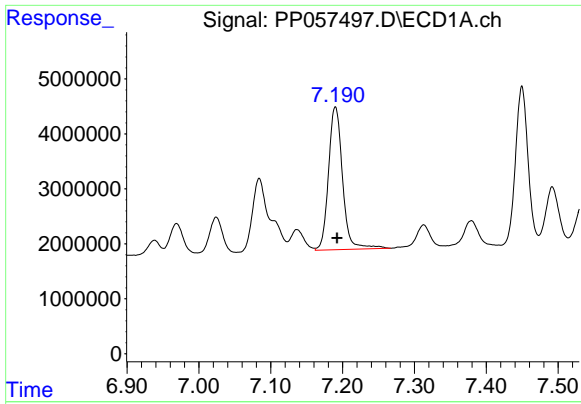
#30 AR-1254-5

R.T.: 7.734 min
 Delta R.T.: -0.004 min
 Response: 41063947
 Conc: 675.14 ng/ml



#30 AR-1254-5

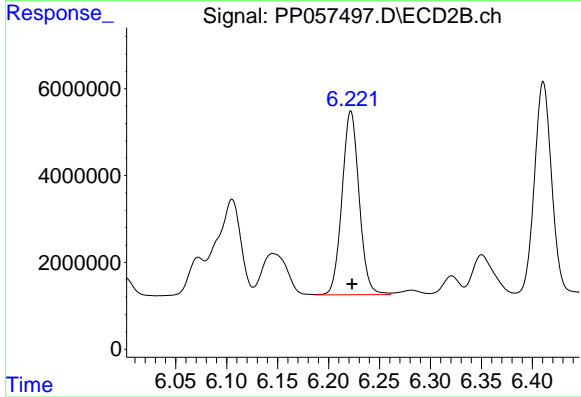
R.T.: 6.742 min
 Delta R.T.: -0.003 min
 Response: 67191209
 Conc: 513.76 ng/ml



#31 AR-1260-1

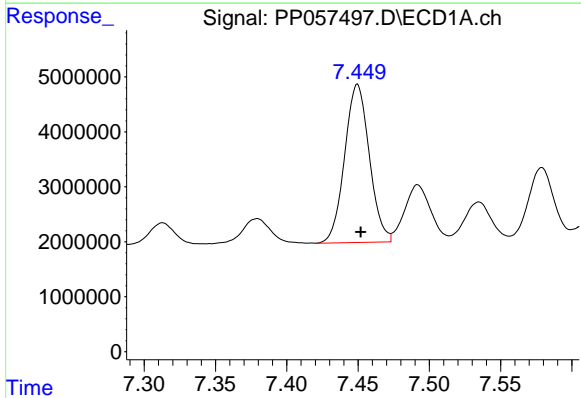
R.T.: 7.190 min
 Delta R.T.: -0.002 min
 Response: 35364881
 Conc: 495.69 ng/ml

Instrument :
 ECD_P
 ClientSampleId :



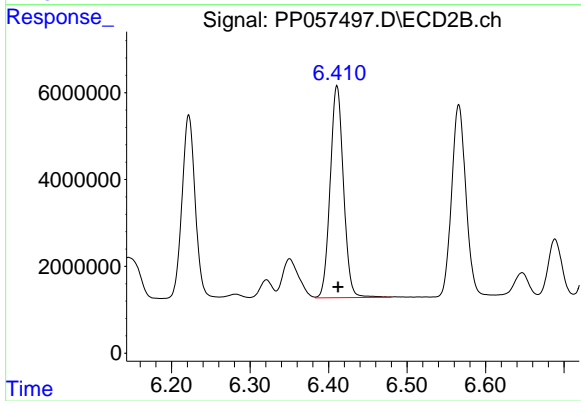
#31 AR-1260-1

R.T.: 6.222 min
 Delta R.T.: -0.001 min
 Response: 49463532
 Conc: 531.47 ng/ml



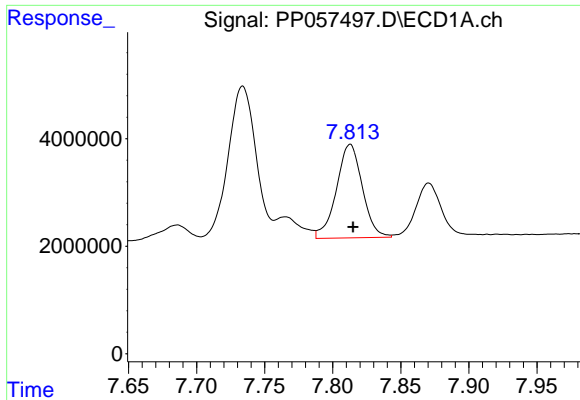
#32 AR-1260-2

R.T.: 7.450 min
 Delta R.T.: -0.002 min
 Response: 34736187
 Conc: 538.66 ng/ml



#32 AR-1260-2

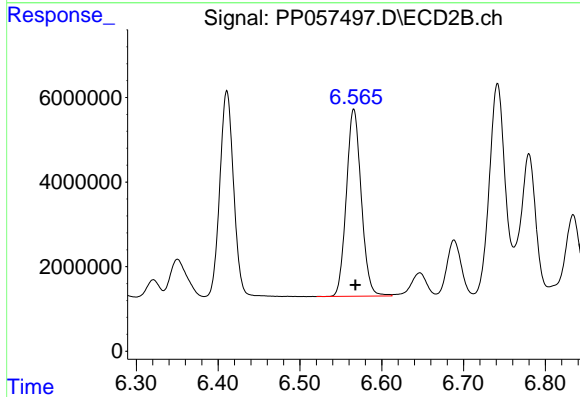
R.T.: 6.411 min
 Delta R.T.: -0.002 min
 Response: 57497651
 Conc: 540.84 ng/ml



#33 AR-1260-3

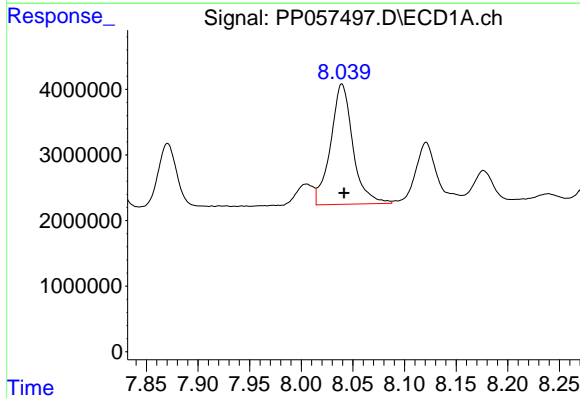
R.T.: 7.813 min
 Delta R.T.: -0.002 min
 Response: 23044424
 Conc: 555.43 ng/ml

Instrument :
 ECD_P
 ClientSampleId :



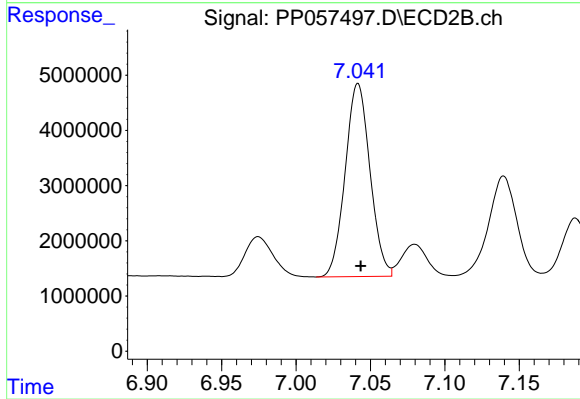
#33 AR-1260-3

R.T.: 6.566 min
 Delta R.T.: -0.002 min
 Response: 55981263
 Conc: 537.80 ng/ml



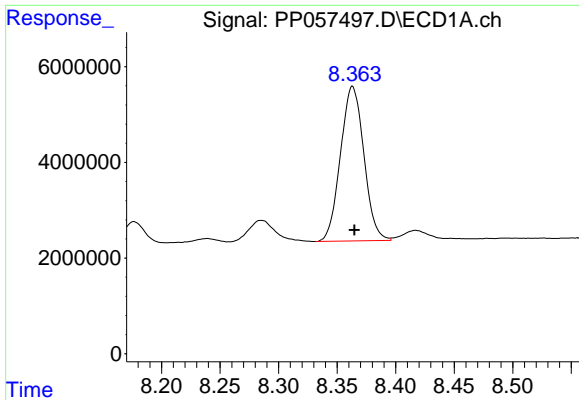
#34 AR-1260-4

R.T.: 8.039 min
 Delta R.T.: -0.002 min
 Response: 27521483
 Conc: 542.36 ng/ml



#34 AR-1260-4

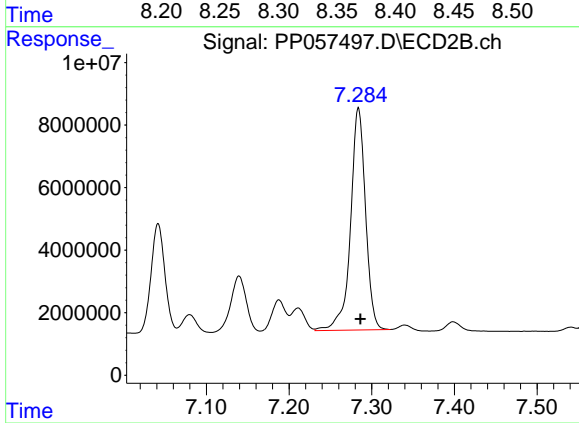
R.T.: 7.042 min
 Delta R.T.: -0.002 min
 Response: 40558973
 Conc: 550.99 ng/ml



#35 AR-1260-5

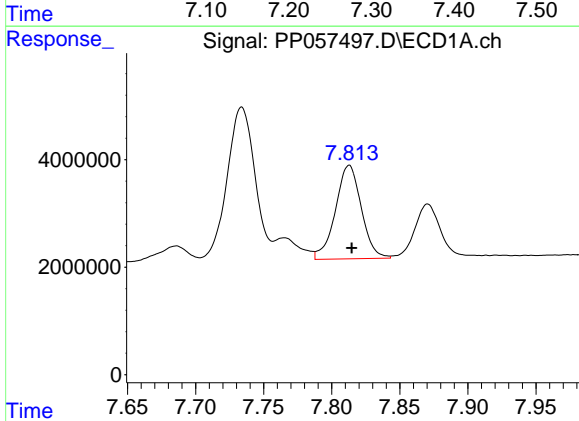
R.T.: 8.363 min
Delta R.T.: -0.002 min
Response: 44968371
Conc: 541.80 ng/ml

Instrument :
ECD_P
ClientSampleId :



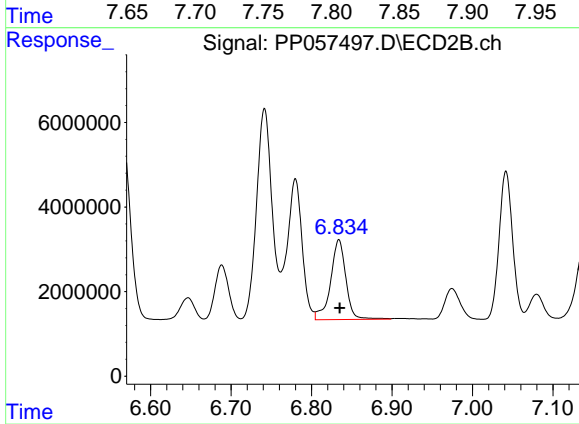
#35 AR-1260-5

R.T.: 7.284 min
Delta R.T.: -0.003 min
Response: 89648027
Conc: 567.16 ng/ml



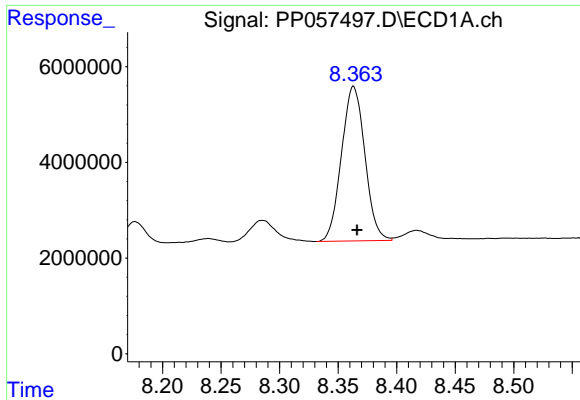
#36 AR-1262-1

R.T.: 7.813 min
Delta R.T.: -0.002 min
Response: 23044424
Conc: 327.93 ng/ml



#36 AR-1262-1

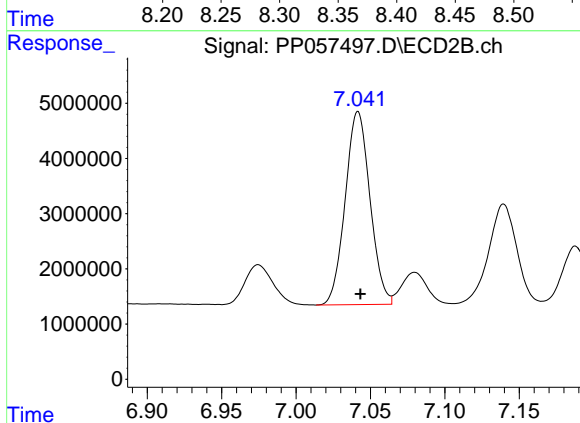
R.T.: 6.834 min
Delta R.T.: 0.000 min
Response: 24955314
Conc: 456.13 ng/ml



#37 AR-1262-2

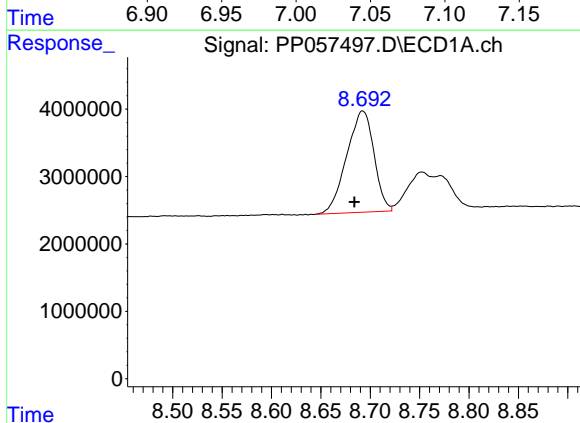
R.T.: 8.363 min
 Delta R.T.: -0.003 min
 Response: 44968371
 Conc: 427.65 ng/ml

Instrument :
 ECD_P
 ClientSampleId :



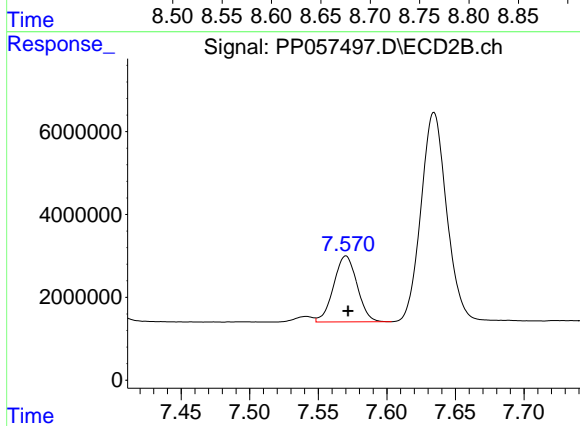
#37 AR-1262-2

R.T.: 7.042 min
 Delta R.T.: -0.001 min
 Response: 40558973
 Conc: 369.87 ng/ml



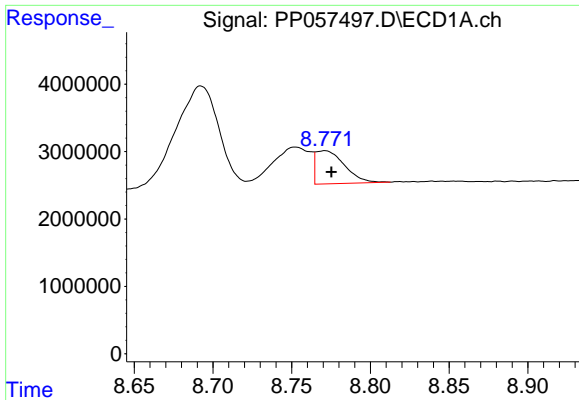
#38 AR-1262-3

R.T.: 8.692 min
 Delta R.T.: 0.008 min
 Response: 28898668
 Conc: 401.02 ng/ml



#38 AR-1262-3

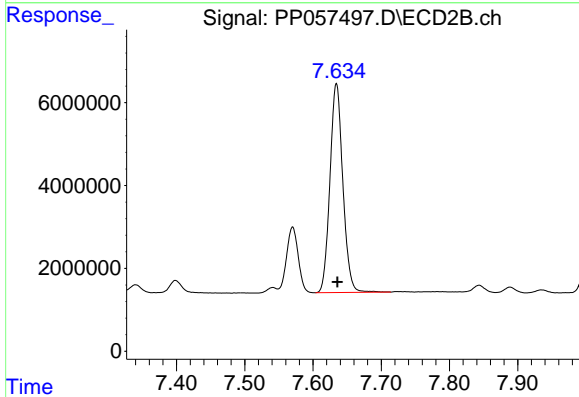
R.T.: 7.570 min
 Delta R.T.: -0.002 min
 Response: 18960898
 Conc: 226.42 ng/ml



#39 AR-1262-4

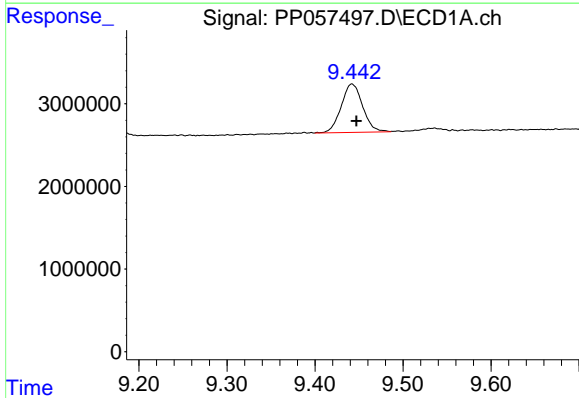
R.T.: 8.771 min
 Delta R.T.: -0.004 min
 Response: 6243754
 Conc: 115.26 ng/ml

Instrument :
 ECD_P
 ClientSampleId :



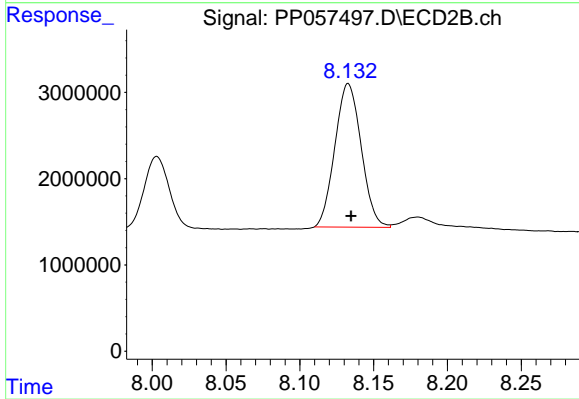
#39 AR-1262-4

R.T.: 7.634 min
 Delta R.T.: -0.001 min
 Response: 66171237
 Conc: 440.93 ng/ml



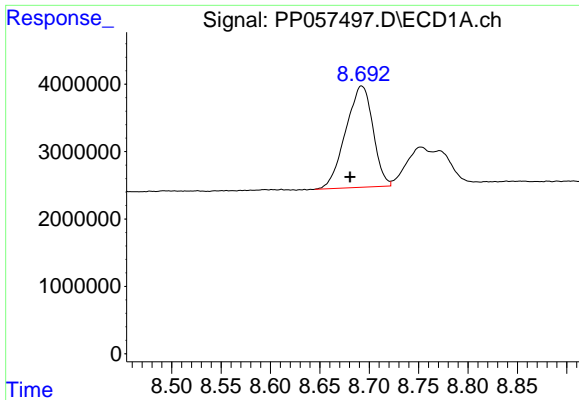
#40 AR-1262-5

R.T.: 9.442 min
 Delta R.T.: -0.005 min
 Response: 9894408
 Conc: 294.48 ng/ml



#40 AR-1262-5

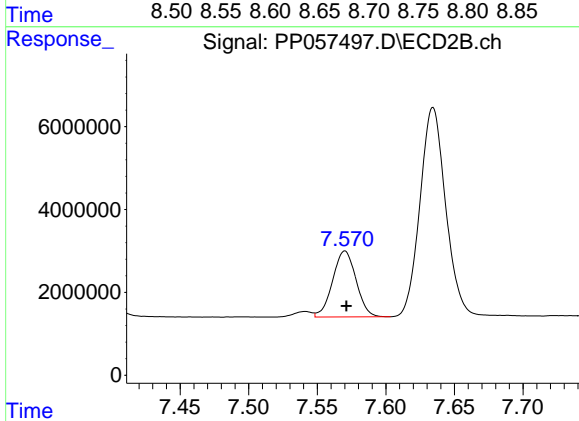
R.T.: 8.133 min
 Delta R.T.: -0.002 min
 Response: 20651310
 Conc: 302.03 ng/ml



#41 AR-1268-1

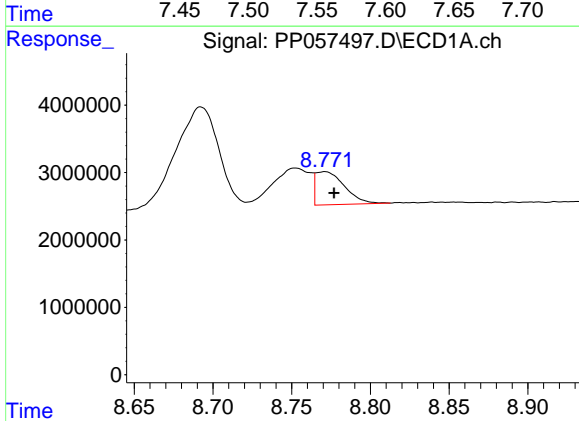
R.T.: 8.692 min
 Delta R.T.: 0.012 min
 Response: 28898668
 Conc: 228.59 ng/ml

Instrument :
 ECD_P
 ClientSampleId :



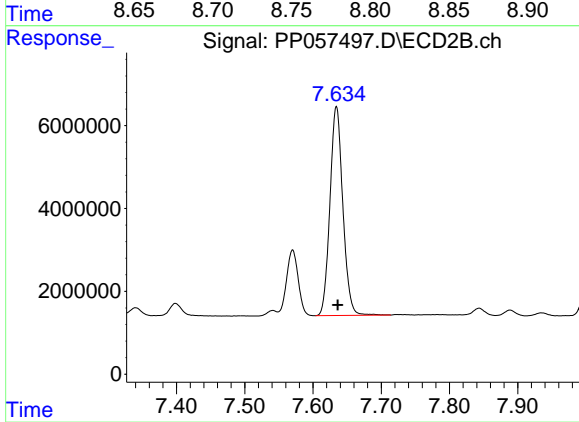
#41 AR-1268-1

R.T.: 7.570 min
 Delta R.T.: -0.001 min
 Response: 18960898
 Conc: 77.26 ng/ml



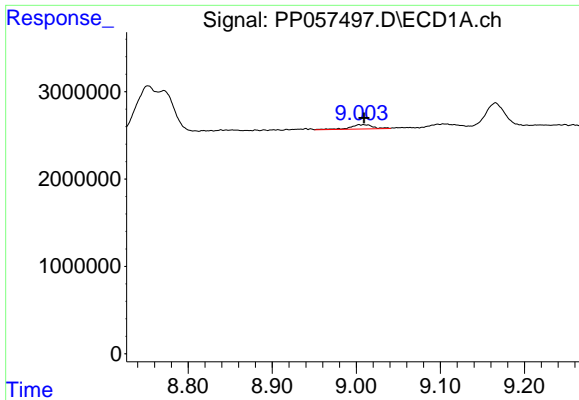
#42 AR-1268-2

R.T.: 8.771 min
 Delta R.T.: -0.006 min
 Response: 6243754
 Conc: 57.12 ng/ml



#42 AR-1268-2

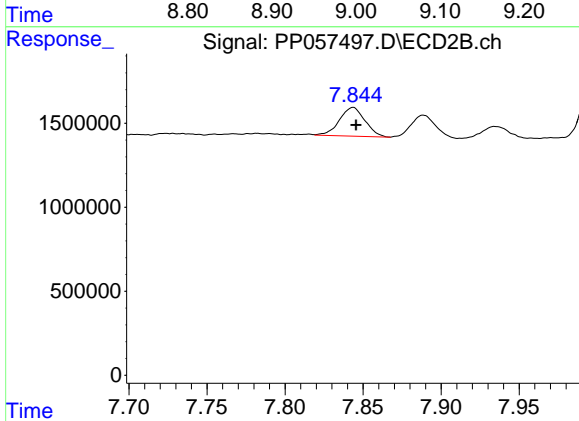
R.T.: 7.634 min
 Delta R.T.: -0.002 min
 Response: 66171237
 Conc: 302.78 ng/ml



#43 AR-1268-3

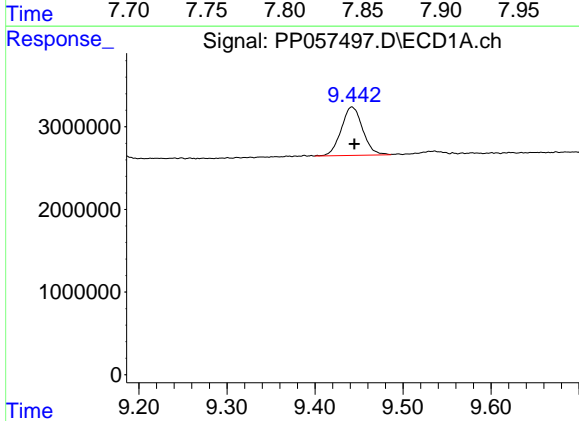
R.T.: 9.003 min
 Delta R.T.: -0.006 min
 Response: 921664
 Conc: 9.19 ng/ml

Instrument :
 ECD_P
 ClientSampleId :



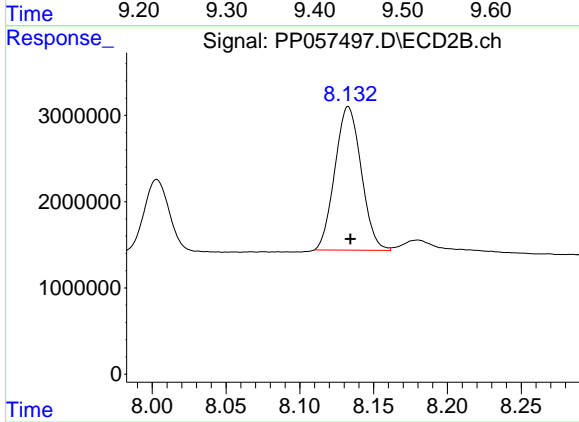
#43 AR-1268-3

R.T.: 7.844 min
 Delta R.T.: -0.002 min
 Response: 1941729
 Conc: 10.19 ng/ml



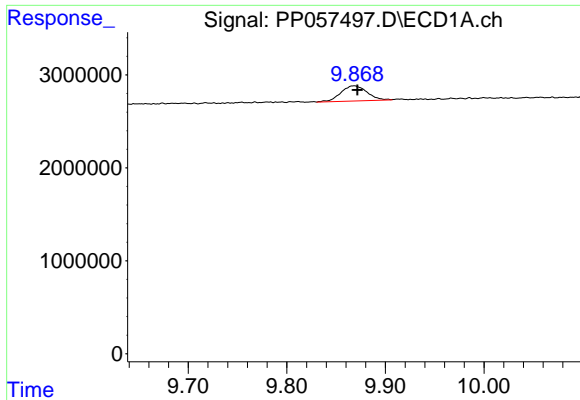
#44 AR-1268-4

R.T.: 9.442 min
 Delta R.T.: -0.003 min
 Response: 9894408
 Conc: 266.30 ng/ml



#44 AR-1268-4

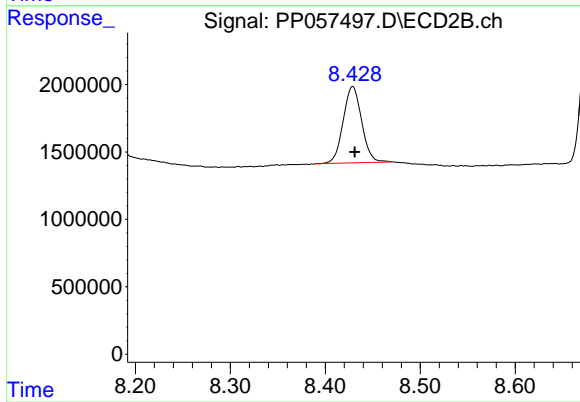
R.T.: 8.133 min
 Delta R.T.: -0.001 min
 Response: 20651310
 Conc: 268.63 ng/ml



#45 AR-1268-5

R.T.: 9.868 min
Delta R.T.: -0.004 min
Response: 3028308
Conc: 11.85 ng/ml

Instrument :
ECD_P
ClientSampleId :



#45 AR-1268-5

R.T.: 8.429 min
Delta R.T.: -0.002 min
Response: 7652931
Conc: 15.12 ng/ml