

Data Path : Z:\pestpcbsrv\HPCHEM1\ECD\_P\Data\PP050423\  
 Data File : PP057514.D  
 Signal(s) : Signal #1: ECD1A.ch Signal #2: ECD2B.ch  
 Acq On : 04 May 2023 16:40  
 Operator : YP\AJ  
 Sample : I.BLK  
 Misc :  
 ALS Vial : 2 Sample Multiplier: 1

Instrument :  
 ECD\_P  
 ClientSampleId :

Integration File signal 1: autoint1.e  
 Integration File signal 2: autoint2.e  
 Quant Time: May 04 21:20:20 2023  
 Quant Method : Z:\pestpcbsrv\HPCHEM1\ECD\_P\methods\PP050323.M  
 Quant Title : GC EXTRACTABLES  
 QLast Update : Thu May 04 07:27:39 2023  
 Response via : Initial Calibration  
 Integrator: ChemStation

Volume Inj. : 2 µl  
 Signal #1 Phase : ZB-MR1 Signal #2 Phase: ZB-MR2  
 Signal #1 Info : 30Mx0.32mmx 0.50µ Signal #2 Info : 30M x 0.32mm x 0.25µm

Compound	RT#1	RT#2	Resp#1	Resp#2	ng/ml	ng/ml
System Monitoring Compounds						
1) SA Tetrachlo...	4.390	3.625	45167319	43045772	21.716	21.252
2) SA Decachlor...	10.220	8.688	17913045	34948155	24.508	26.864
Target Compounds						
3) L1 AR-1016-1	5.558	4.729	69625	2131040	1.273	33.288 #
4) L1 AR-1016-2	5.599	4.729	338387	2131040	4.181	24.083 #
5) L1 AR-1016-3	5.653	4.923	257703	2158168	5.145	42.803 #
6) L1 AR-1016-4	5.752	4.970	19933	1946779	0.494	48.338 #
7) L1 AR-1016-5	6.066	5.183	194433	1710605	4.761	33.491 #
8) L2 AR-1221-1	4.597	3.856	177499	25005	7.105	1.019 #
9) L2 AR-1221-2	4.699	3.929	964667	964674	52.189	51.612
10) L2 AR-1221-3	4.781	4.005	338052	238117	6.222	4.273 #
11) L3 AR-1232-1	4.781	4.005	338052	238117	8.324	5.742 #
12) L3 AR-1232-2	5.305	4.729	48884	2131040	2.089	51.406 #
13) L3 AR-1232-3	5.599	4.923	338387	2158168	9.170	90.643 #
14) L3 AR-1232-4	5.752	5.002	19933	735207	1.099	34.591 #
15) L3 AR-1232-5	5.841	5.183	99613	1710605	6.437	71.937 #
16) L4 AR-1242-1	5.558	4.729	69625	2131040	1.612	42.021 #
17) L4 AR-1242-2	5.599	4.729	338387	2131040	5.398	30.699 #
18) L4 AR-1242-3	5.653	4.923	257703	2158168	6.560	53.272 #
19) L4 AR-1242-4	5.752	5.002	19933	735207	0.626	18.284 #
20) L4 AR-1242-5	6.515	5.515f	272203	303653	9.789	6.187 #
21) L5 AR-1248-1	5.599	4.729	338387	2131040	8.764	46.652 #
22) L5 AR-1248-2	5.841f	4.970	99613	1946779	1.694	30.459 #
23) L5 AR-1248-3	6.066	5.002	194433	735207	3.137	10.912 #
24) L5 AR-1248-4	6.465	5.183	236784	1710605	4.222	21.644 #
25) L5 AR-1248-5	6.515	5.559f	272203	3384405	4.885	45.353 #
26) L6 AR-1254-1	6.436	5.515f	1046843	303653	17.082	3.026 #
27) L6 AR-1254-2	6.663	5.683	212137	2535420	2.491	28.515 #
28) L6 AR-1254-3	7.026	6.090	739582	1951567	9.258	13.935 #
29) L6 AR-1254-4	7.316	6.321	823812	642425	14.756	7.533 #
30) L6 AR-1254-5	7.732	6.742	421807	865530	6.935	6.618
31) L7 AR-1260-1	7.170f	6.228	217756	1163852	3.052	12.505 #
32) L7 AR-1260-2	7.468f	6.411	522553	1344963	8.103	12.651 #
33) L7 AR-1260-3	7.828	6.551f	207078	823979	4.991	7.916 #
34) L7 AR-1260-4	8.037	0.000	259716	0	5.118	N.D. #
35) L7 AR-1260-5	8.365	7.281	282492	815850	3.404	5.162 #
36) L8 AR-1262-1	7.828	6.854f	207078	771010	2.947	14.092 #
37) L8 AR-1262-2	8.365	0.000	282492	0	2.686	N.D. #
38) L8 AR-1262-3	8.687	7.569	139617	477029	1.937	5.696 #
39) L8 AR-1262-4	8.770	7.632	64173	354131	1.185	2.360 #
40) L8 AR-1262-5	9.455	0.000	97101	0	2.890	N.D. #
41) L9 AR-1268-1	8.687	7.569	139617	477029	1.104	1.944 #

Data Path : Z:\pestpcbsrv\HPCHEM1\ECD\_P\Data\PP050423\  
 Data File : PP057514.D  
 Signal(s) : Signal #1: ECD1A.ch Signal #2: ECD2B.ch  
 Acq On : 04 May 2023 16:40  
 Operator : YP\AJ  
 Sample : I.BLK  
 Misc :  
 ALS Vial : 2 Sample Multiplier: 1

Instrument :  
 ECD\_P  
 ClientSampleId :

Integration File signal 1: autoint1.e  
 Integration File signal 2: autoint2.e  
 Quant Time: May 04 21:20:20 2023  
 Quant Method : Z:\pestpcbsrv\HPCHEM1\ECD\_P\methods\PP050323.M  
 Quant Title : GC EXTRACTABLES  
 QLast Update : Thu May 04 07:27:39 2023  
 Response via : Initial Calibration  
 Integrator: ChemStation

Volume Inj. : 2 µl  
 Signal #1 Phase : ZB-MR1 Signal #2 Phase: ZB-MR2  
 Signal #1 Info : 30Mx0.32mmx 0.50µ Signal #2 Info : 30M x 0.32mm x 0.25µm

	Compound	RT#1	RT#2	Resp#1	Resp#2	ng/ml	ng/ml
42)	L9 AR-1268-2	8.770	7.632	64173	354131	0.587	1.620 #
43)	L9 AR-1268-3	9.013	7.842	166687	603530	1.662	3.169 #
44)	L9 AR-1268-4	9.455	0.000	97101	0	2.613	N.D. #
45)	L9 AR-1268-5	9.873	8.428	61275	636376	0.240	1.257 #

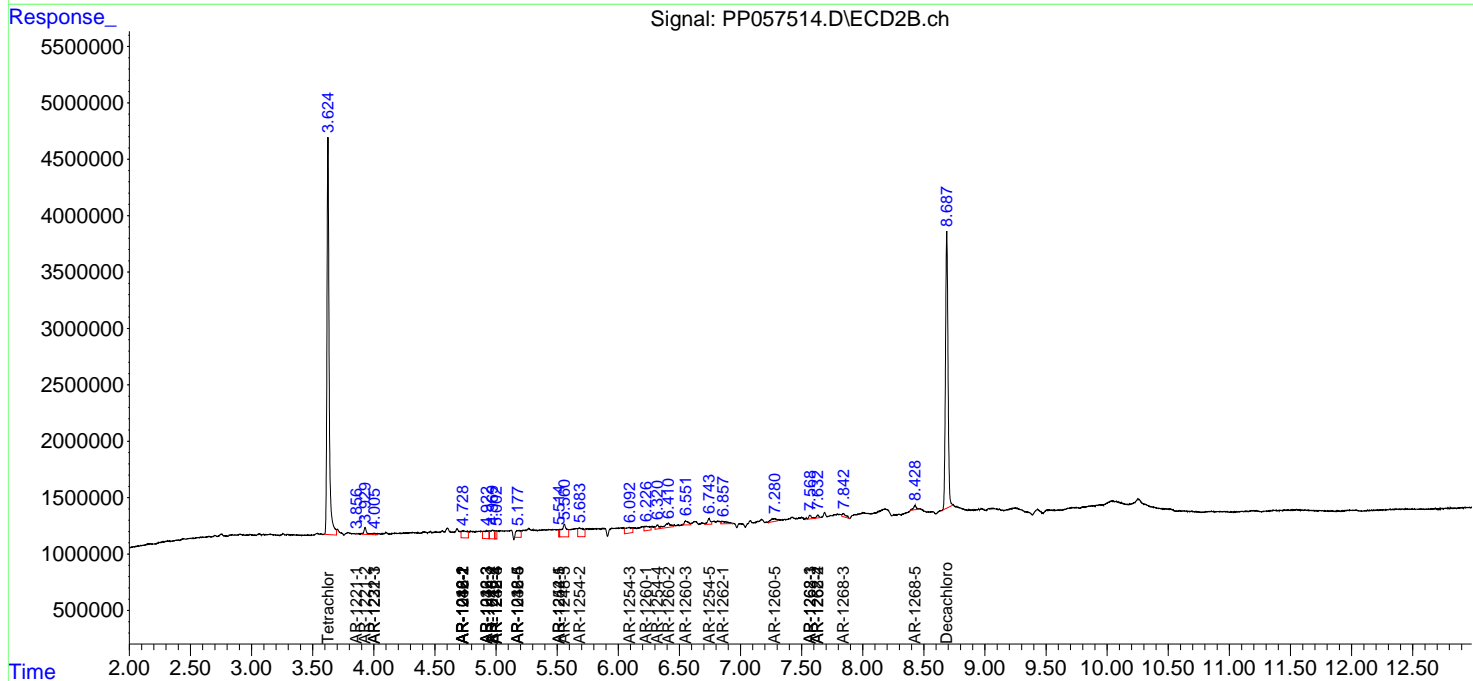
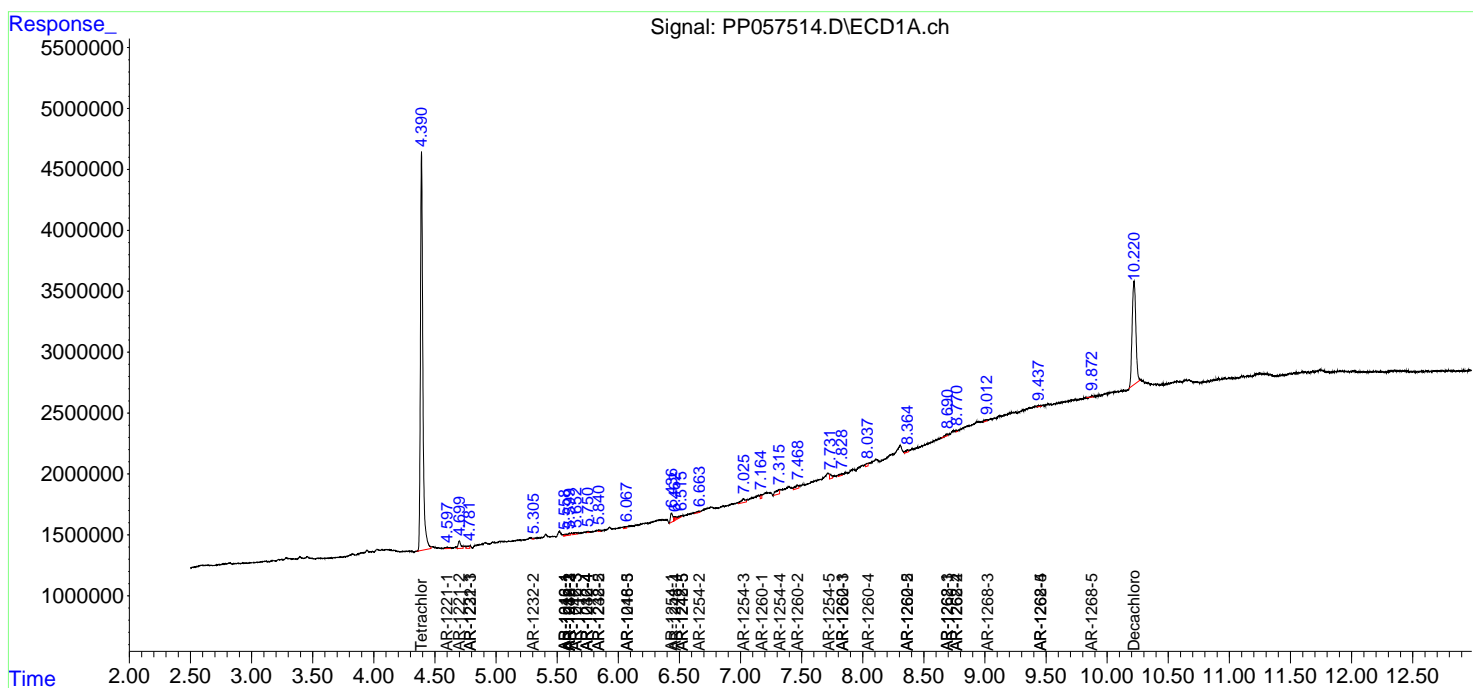
(f)=RT Delta > 1/2 Window (#)=Amounts differ by > 25% (m)=manual int.

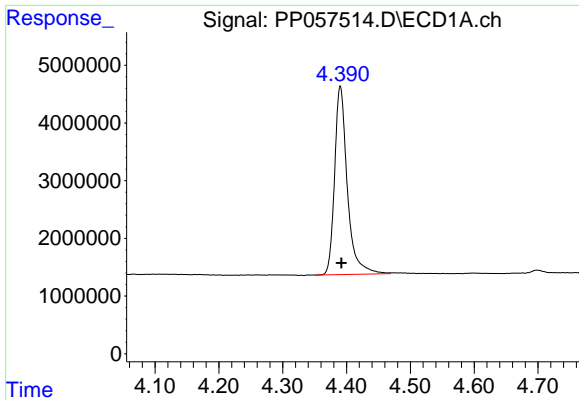
Data Path : Z:\pestpcbsrv\HPCHEM1\ECD\_P\Data\PP050423\  
 Data File : PP057514.D  
 Signal(s) : Signal #1: ECD1A.ch Signal #2: ECD2B.ch  
 Acq On : 04 May 2023 16:40  
 Operator : YP\AJ  
 Sample : I.BLK  
 Misc :  
 ALS Vial : 2 Sample Multiplier: 1

Instrument :  
 ECD\_P  
 ClientSampleId :

Integration File signal 1: autoint1.e  
 Integration File signal 2: autoint2.e  
 Quant Time: May 04 21:20:20 2023  
 Quant Method : Z:\pestpcbsrv\HPCHEM1\ECD\_P\methods\PP050323.M  
 Quant Title : GC EXTRACTABLES  
 QLast Update : Thu May 04 07:27:39 2023  
 Response via : Initial Calibration  
 Integrator: ChemStation

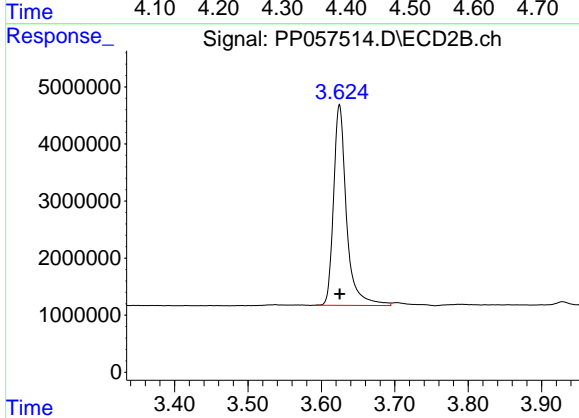
Volume Inj. : 2 µl  
 Signal #1 Phase : ZB-MR1 Signal #2 Phase: ZB-MR2  
 Signal #1 Info : 30Mx0.32mmx 0.50µ Signal #2 Info : 30M x 0.32mm x 0.25µm



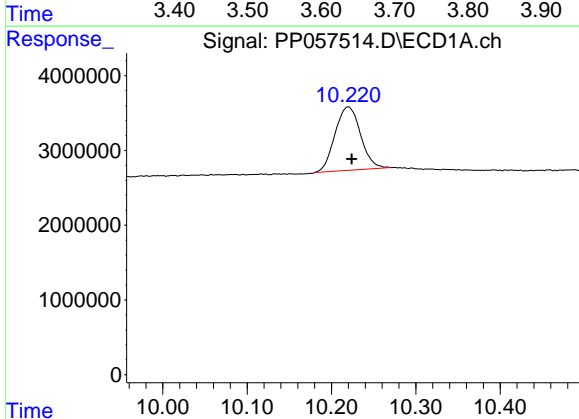


#1 Tetrachloro-m-xylene  
 R.T.: 4.390 min  
 Delta R.T.: -0.002 min  
 Response: 45167319  
 Conc: 21.72 ng/ml

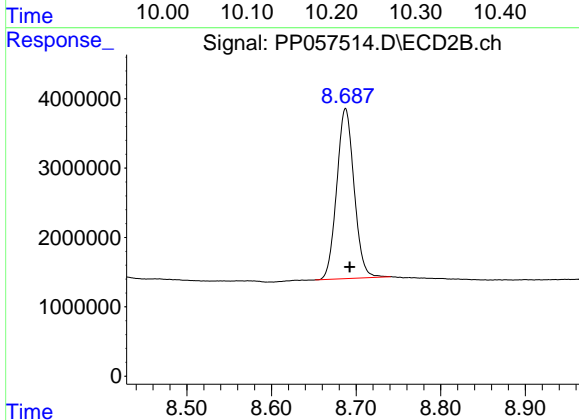
Instrument :  
 ECD\_P  
 ClientSampleId :



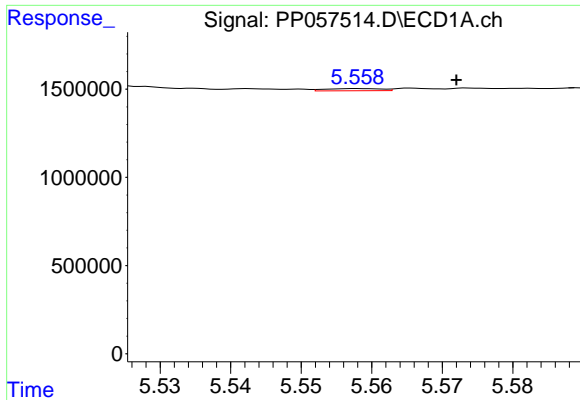
#1 Tetrachloro-m-xylene  
 R.T.: 3.625 min  
 Delta R.T.: 0.000 min  
 Response: 43045772  
 Conc: 21.25 ng/ml



#2 Decachlorobiphenyl  
 R.T.: 10.220 min  
 Delta R.T.: -0.004 min  
 Response: 17913045  
 Conc: 24.51 ng/ml



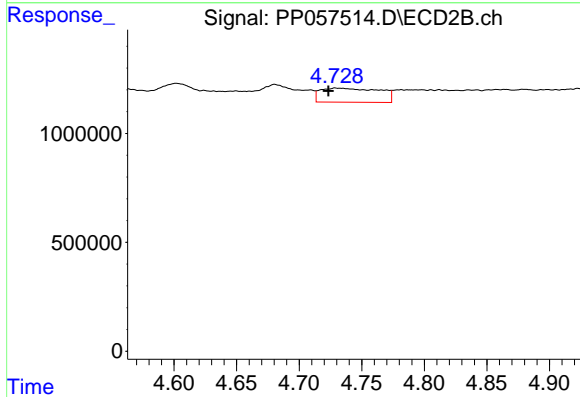
#2 Decachlorobiphenyl  
 R.T.: 8.688 min  
 Delta R.T.: -0.005 min  
 Response: 34948155  
 Conc: 26.86 ng/ml



#3 AR-1016-1

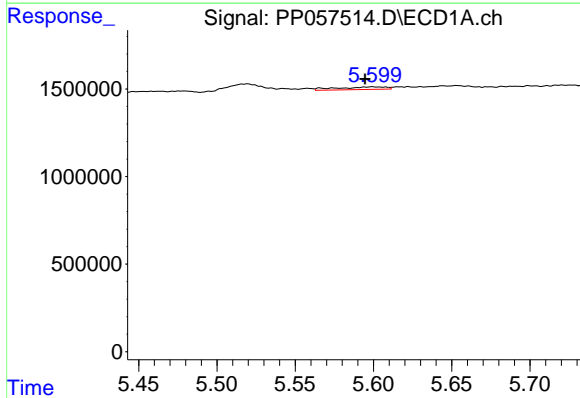
R.T.: 5.558 min  
 Delta R.T.: -0.014 min  
 Response: 69625  
 Conc: 1.27 ng/ml

Instrument :  
 ECD\_P  
 ClientSampleId :



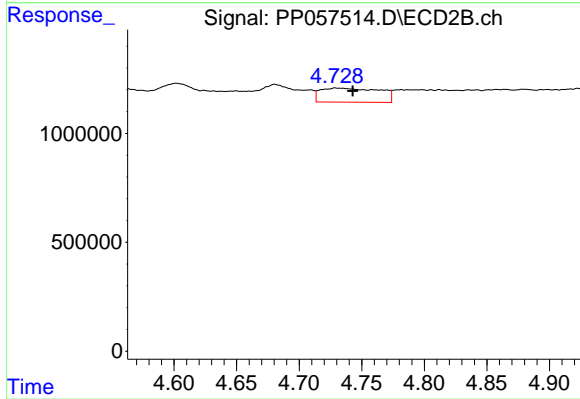
#3 AR-1016-1

R.T.: 4.729 min  
 Delta R.T.: 0.006 min  
 Response: 2131040  
 Conc: 33.29 ng/ml



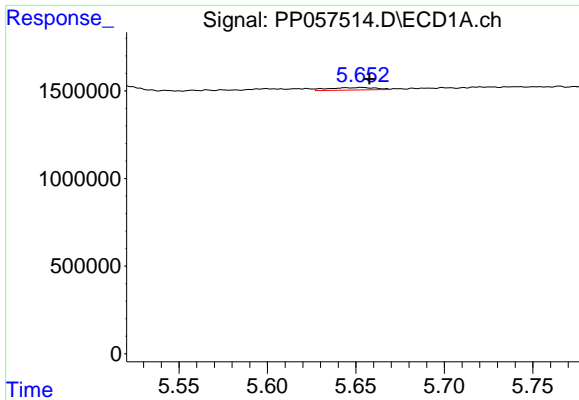
#4 AR-1016-2

R.T.: 5.599 min  
 Delta R.T.: 0.005 min  
 Response: 338387  
 Conc: 4.18 ng/ml



#4 AR-1016-2

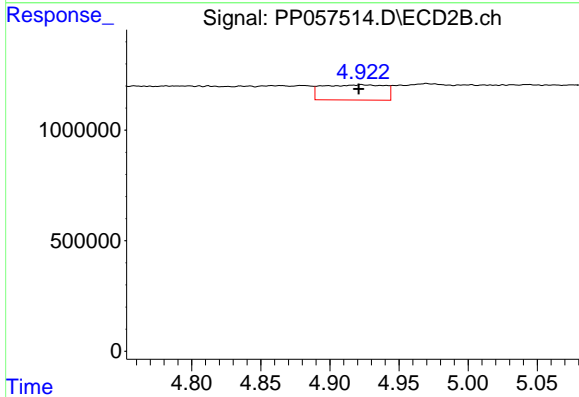
R.T.: 4.729 min  
 Delta R.T.: -0.014 min  
 Response: 2131040  
 Conc: 24.08 ng/ml



#5 AR-1016-3

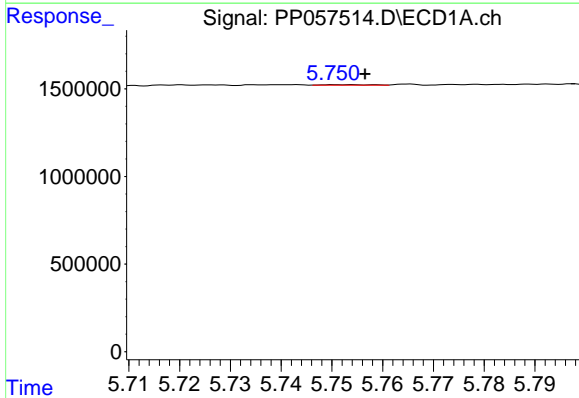
R.T.: 5.653 min  
 Delta R.T.: -0.004 min  
 Response: 257703  
 Conc: 5.14 ng/ml

Instrument :  
 ECD\_P  
 ClientSampleId :



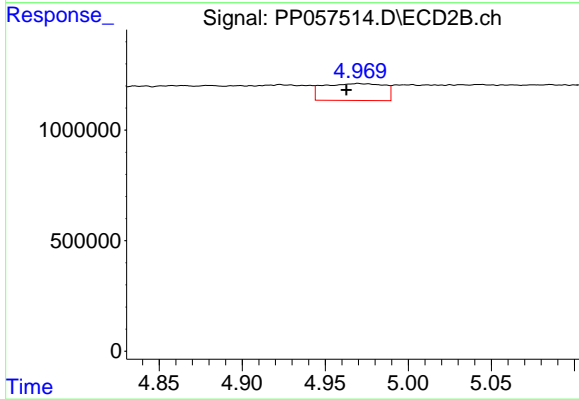
#5 AR-1016-3

R.T.: 4.923 min  
 Delta R.T.: 0.002 min  
 Response: 2158168  
 Conc: 42.80 ng/ml



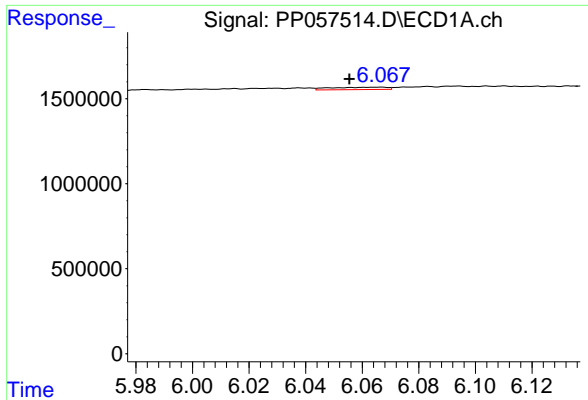
#6 AR-1016-4

R.T.: 5.752 min  
 Delta R.T.: -0.005 min  
 Response: 19933  
 Conc: 0.49 ng/ml



#6 AR-1016-4

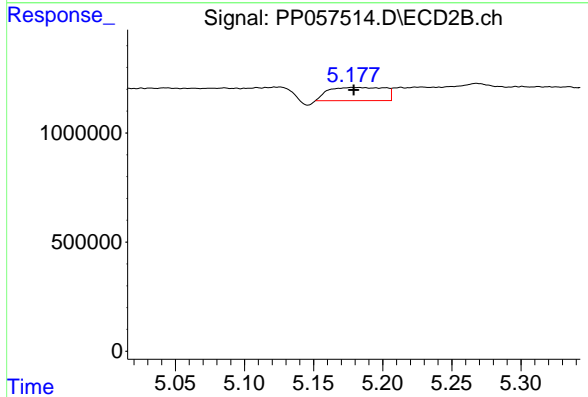
R.T.: 4.970 min  
 Delta R.T.: 0.007 min  
 Response: 1946779  
 Conc: 48.34 ng/ml



#7 AR-1016-5

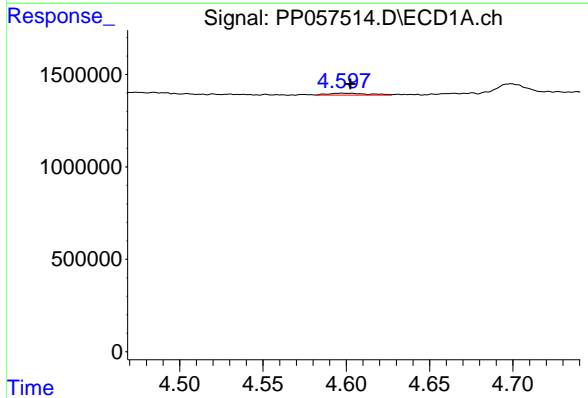
R.T.: 6.066 min  
 Delta R.T.: 0.011 min  
 Response: 194433  
 Conc: 4.76 ng/ml

Instrument :  
 ECD\_P  
 ClientSampleId :



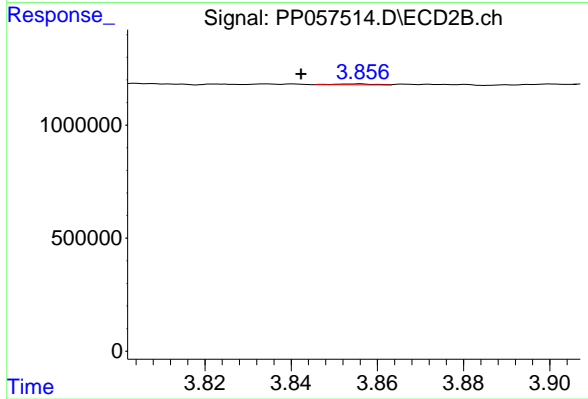
#7 AR-1016-5

R.T.: 5.183 min  
 Delta R.T.: 0.004 min  
 Response: 1710605  
 Conc: 33.49 ng/ml



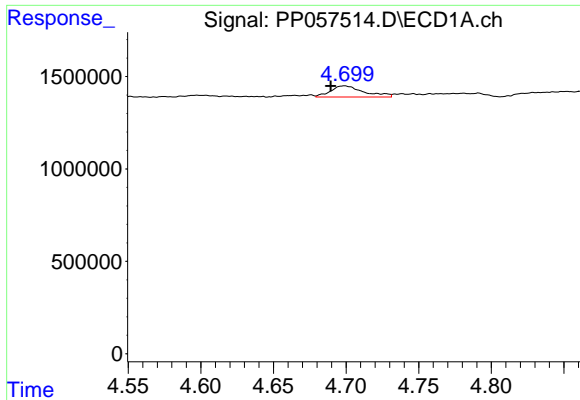
#8 AR-1221-1

R.T.: 4.597 min  
 Delta R.T.: -0.005 min  
 Response: 177499  
 Conc: 7.10 ng/ml



#8 AR-1221-1

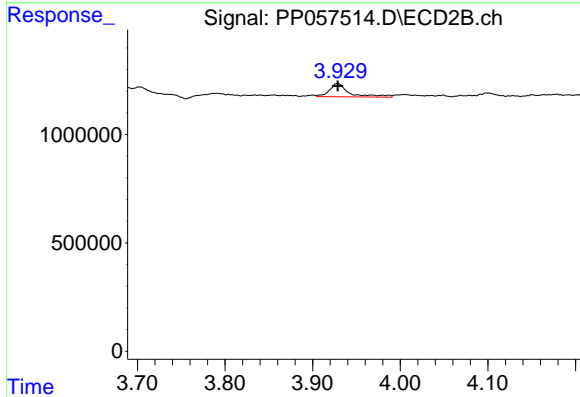
R.T.: 3.856 min  
 Delta R.T.: 0.013 min  
 Response: 25005  
 Conc: 1.02 ng/ml



#9 AR-1221-2

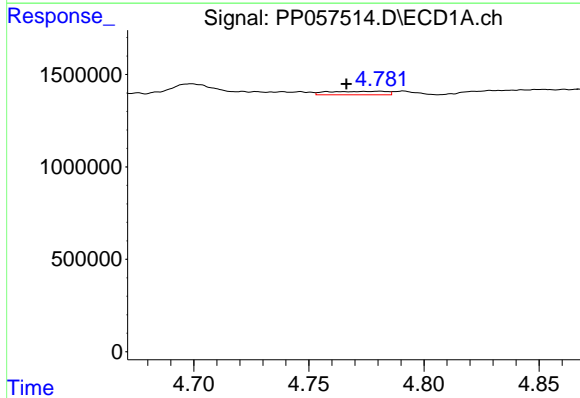
R.T.: 4.699 min  
 Delta R.T.: 0.009 min  
 Response: 964667  
 Conc: 52.19 ng/ml

Instrument :  
 ECD\_P  
 ClientSampleId :



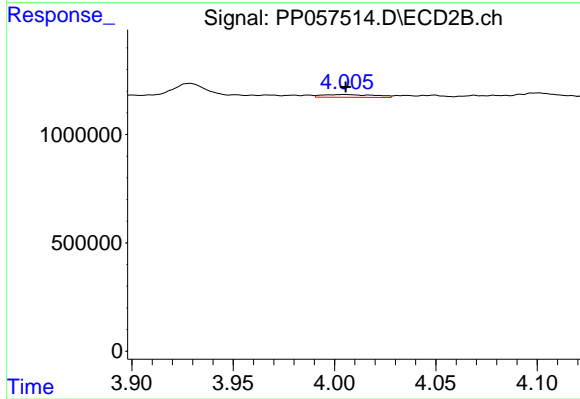
#9 AR-1221-2

R.T.: 3.929 min  
 Delta R.T.: 0.000 min  
 Response: 964674  
 Conc: 51.61 ng/ml



#10 AR-1221-3

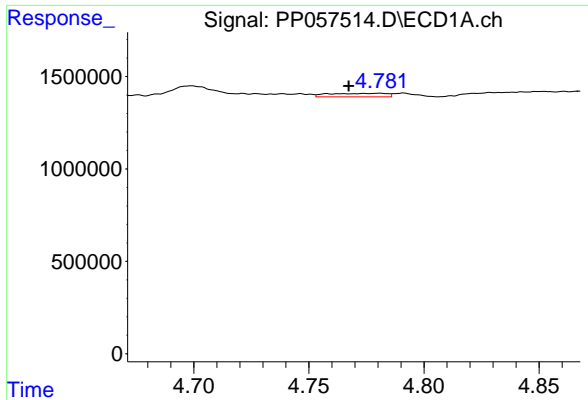
R.T.: 4.781 min  
 Delta R.T.: 0.014 min  
 Response: 338052  
 Conc: 6.22 ng/ml



#10 AR-1221-3

R.T.: 4.005 min  
 Delta R.T.: 0.000 min  
 Response: 238117  
 Conc: 4.27 ng/ml

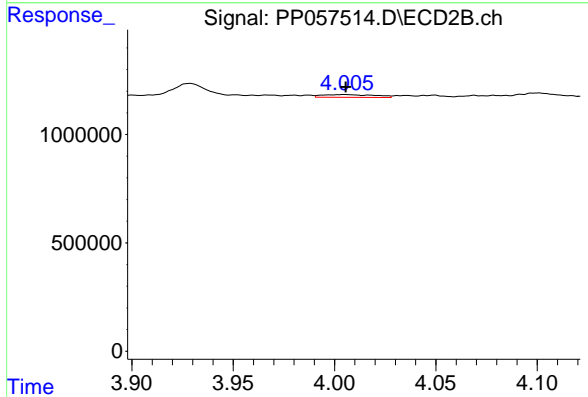




#11 AR-1232-1

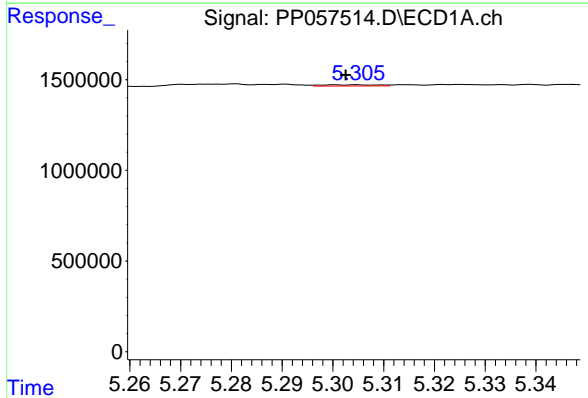
R.T.: 4.781 min  
 Delta R.T.: 0.013 min  
 Response: 338052  
 Conc: 8.32 ng/ml

Instrument :  
 ECD\_P  
 ClientSampleId :



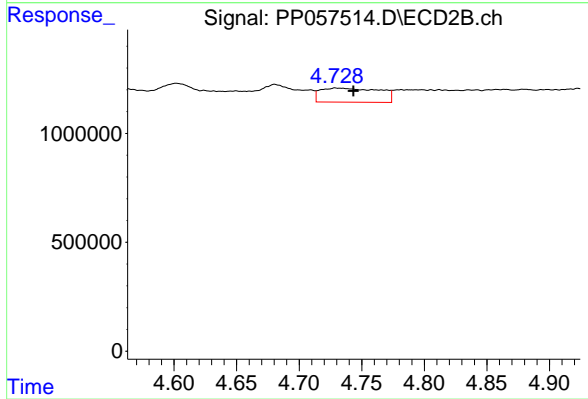
#11 AR-1232-1

R.T.: 4.005 min  
 Delta R.T.: 0.000 min  
 Response: 238117  
 Conc: 5.74 ng/ml



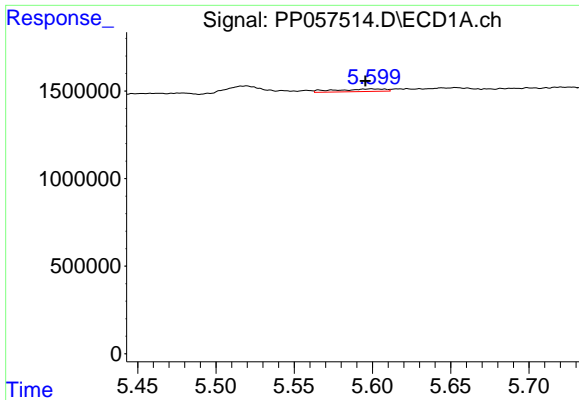
#12 AR-1232-2

R.T.: 5.305 min  
 Delta R.T.: 0.002 min  
 Response: 48884  
 Conc: 2.09 ng/ml



#12 AR-1232-2

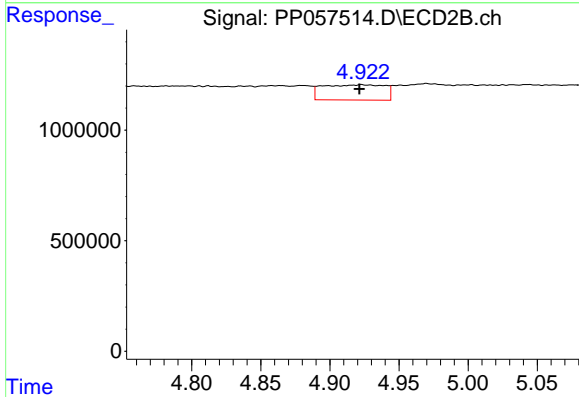
R.T.: 4.729 min  
 Delta R.T.: -0.014 min  
 Response: 2131040  
 Conc: 51.41 ng/ml



#13 AR-1232-3

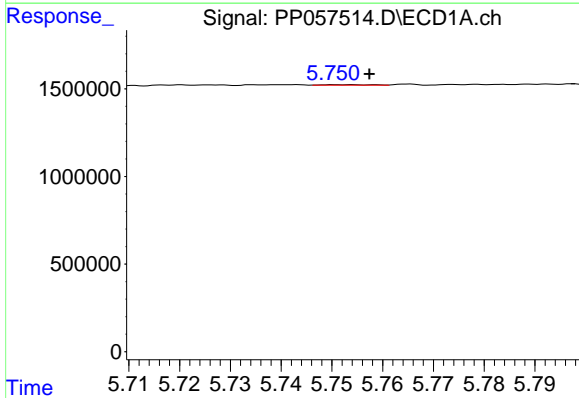
R.T.: 5.599 min  
 Delta R.T.: 0.004 min  
 Response: 338387  
 Conc: 9.17 ng/ml

Instrument :  
 ECD\_P  
 ClientSampleId :



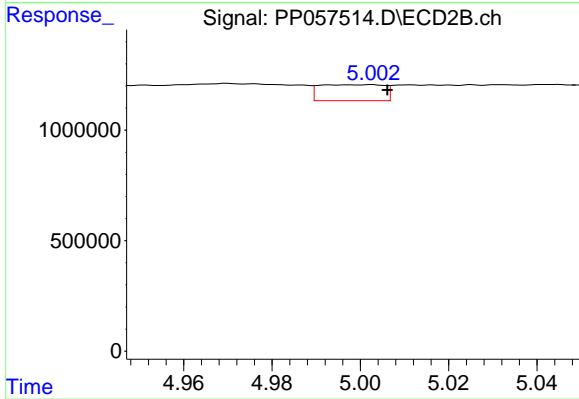
#13 AR-1232-3

R.T.: 4.923 min  
 Delta R.T.: 0.001 min  
 Response: 2158168  
 Conc: 90.64 ng/ml



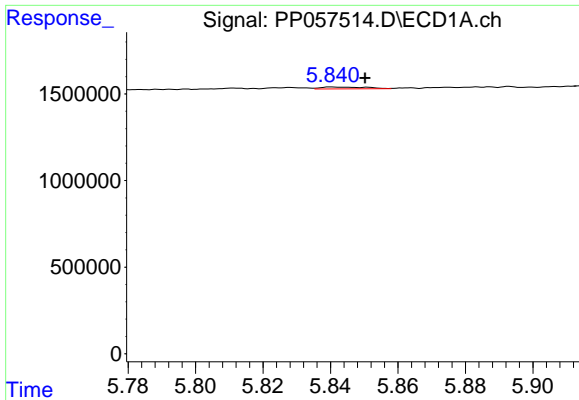
#14 AR-1232-4

R.T.: 5.752 min  
 Delta R.T.: -0.006 min  
 Response: 19933  
 Conc: 1.10 ng/ml



#14 AR-1232-4

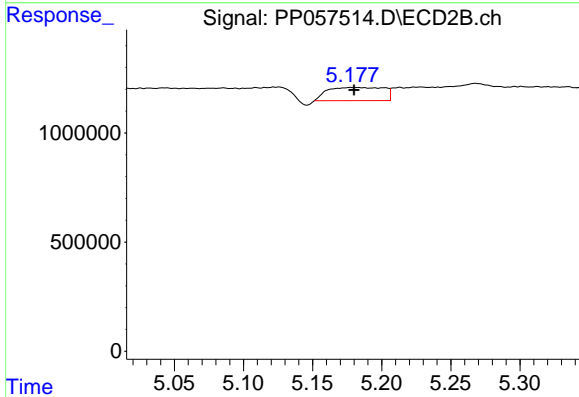
R.T.: 5.002 min  
 Delta R.T.: -0.004 min  
 Response: 735207  
 Conc: 34.59 ng/ml



#15 AR-1232-5

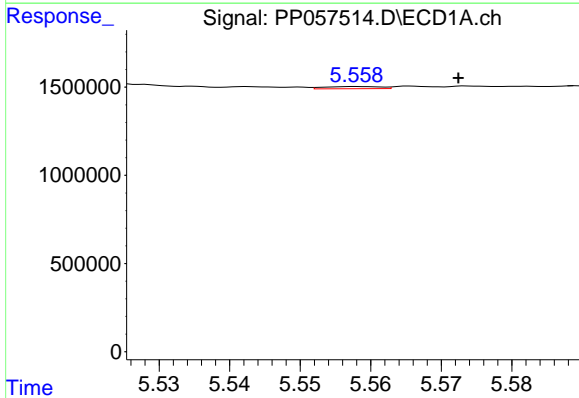
R.T.: 5.841 min  
 Delta R.T.: -0.009 min  
 Response: 99613  
 Conc: 6.44 ng/ml

Instrument :  
 ECD\_P  
 ClientSampleId :



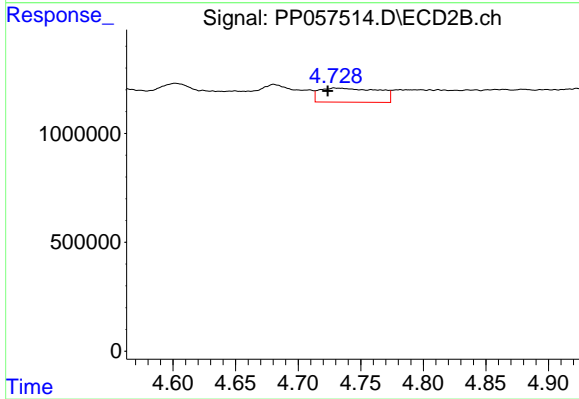
#15 AR-1232-5

R.T.: 5.183 min  
 Delta R.T.: 0.003 min  
 Response: 1710605  
 Conc: 71.94 ng/ml



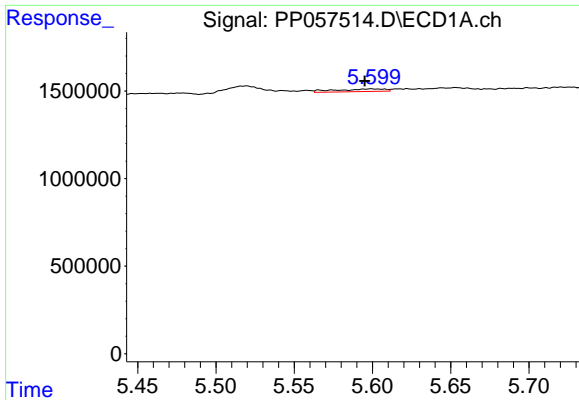
#16 AR-1242-1

R.T.: 5.558 min  
 Delta R.T.: -0.014 min  
 Response: 69625  
 Conc: 1.61 ng/ml



#16 AR-1242-1

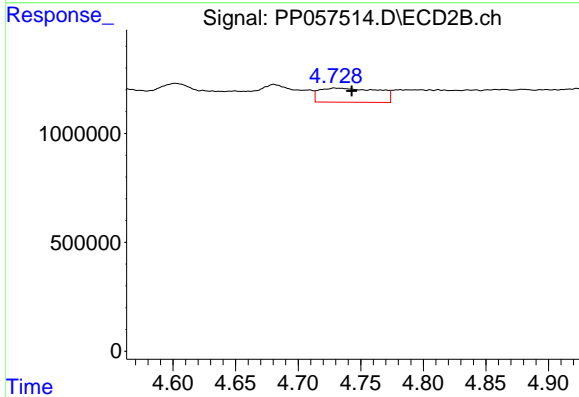
R.T.: 4.729 min  
 Delta R.T.: 0.006 min  
 Response: 2131040  
 Conc: 42.02 ng/ml



#17 AR-1242-2

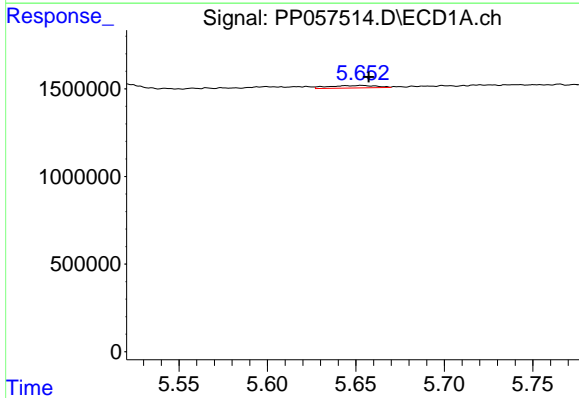
R.T.: 5.599 min  
 Delta R.T.: 0.004 min  
 Response: 338387  
 Conc: 5.40 ng/ml

Instrument :  
 ECD\_P  
 ClientSampleId :



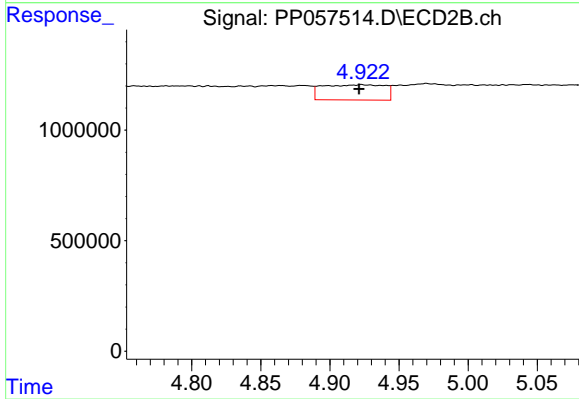
#17 AR-1242-2

R.T.: 4.729 min  
 Delta R.T.: -0.014 min  
 Response: 2131040  
 Conc: 30.70 ng/ml



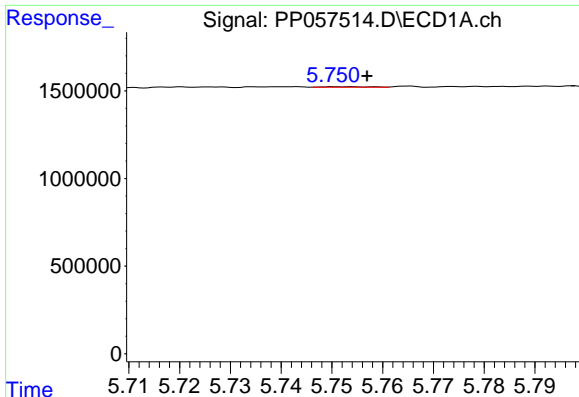
#18 AR-1242-3

R.T.: 5.653 min  
 Delta R.T.: -0.004 min  
 Response: 257703  
 Conc: 6.56 ng/ml



#18 AR-1242-3

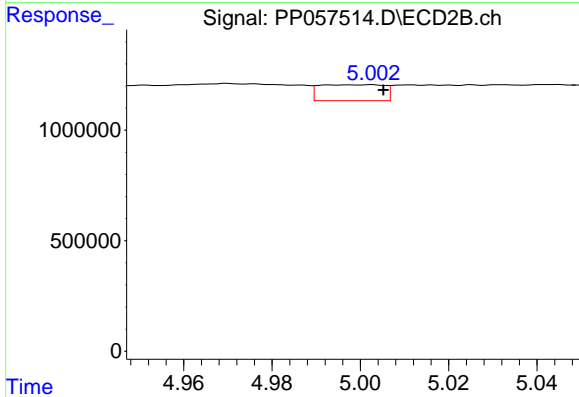
R.T.: 4.923 min  
 Delta R.T.: 0.002 min  
 Response: 2158168  
 Conc: 53.27 ng/ml



#19 AR-1242-4

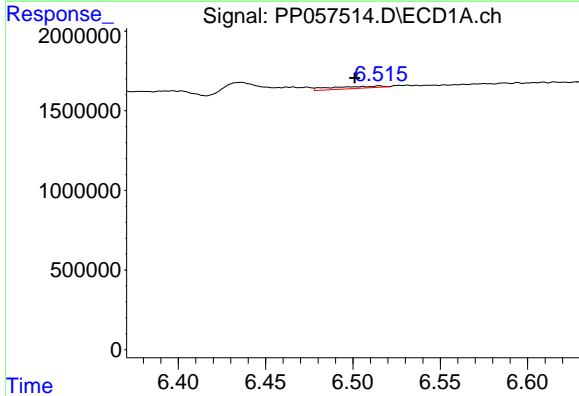
R.T.: 5.752 min  
 Delta R.T.: -0.005 min  
 Response: 19933  
 Conc: 0.63 ng/ml

Instrument :  
 ECD\_P  
 ClientSampleId :



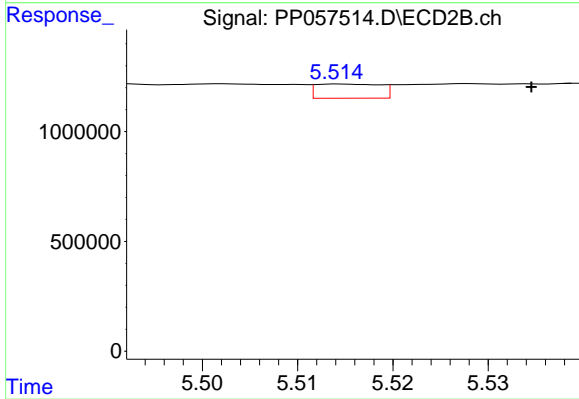
#19 AR-1242-4

R.T.: 5.002 min  
 Delta R.T.: -0.003 min  
 Response: 735207  
 Conc: 18.28 ng/ml



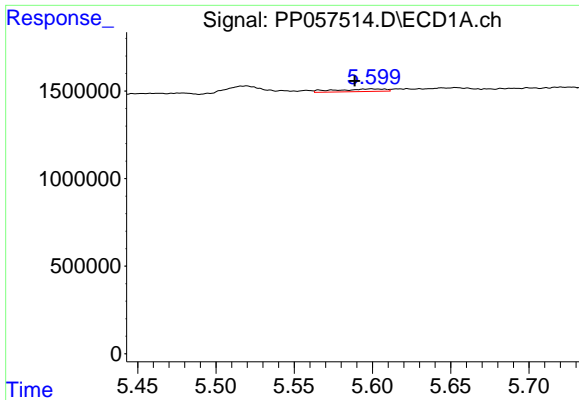
#20 AR-1242-5

R.T.: 6.515 min  
 Delta R.T.: 0.014 min  
 Response: 272203  
 Conc: 9.79 ng/ml



#20 AR-1242-5

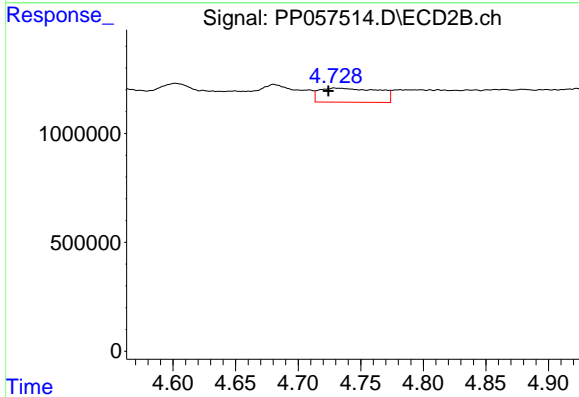
R.T.: 5.515 min  
 Delta R.T.: -0.020 min  
 Response: 303653  
 Conc: 6.19 ng/ml



#21 AR-1248-1

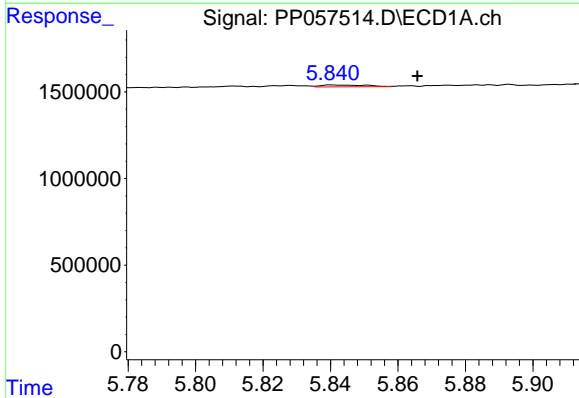
R.T.: 5.599 min  
 Delta R.T.: 0.011 min  
 Response: 338387  
 Conc: 8.76 ng/ml

Instrument :  
 ECD\_P  
 ClientSampleId :



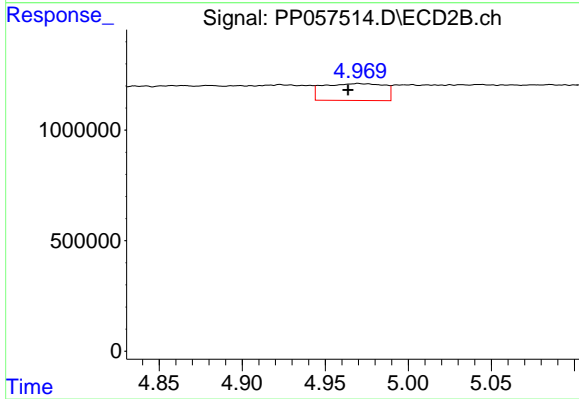
#21 AR-1248-1

R.T.: 4.729 min  
 Delta R.T.: 0.005 min  
 Response: 2131040  
 Conc: 46.65 ng/ml



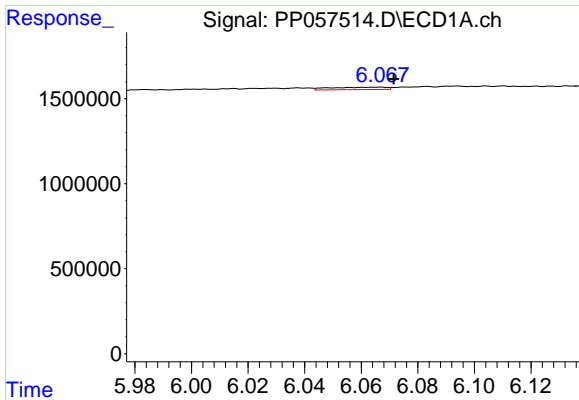
#22 AR-1248-2

R.T.: 5.841 min  
 Delta R.T.: -0.025 min  
 Response: 99613  
 Conc: 1.69 ng/ml



#22 AR-1248-2

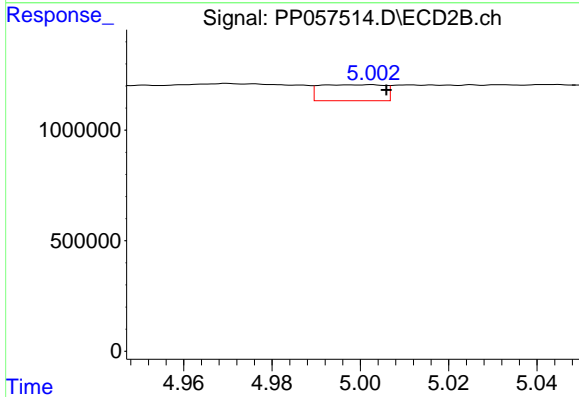
R.T.: 4.970 min  
 Delta R.T.: 0.006 min  
 Response: 1946779  
 Conc: 30.46 ng/ml



#23 AR-1248-3

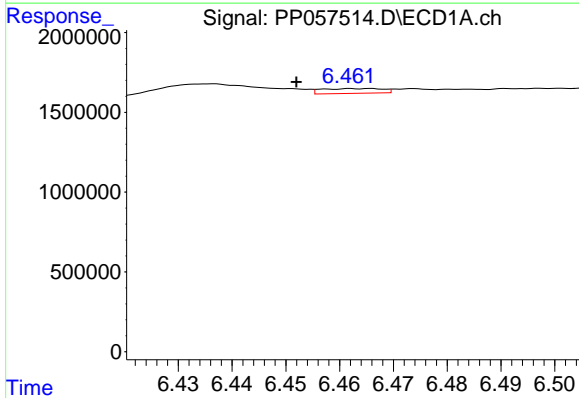
R.T.: 6.066 min  
 Delta R.T.: -0.005 min  
 Response: 194433  
 Conc: 3.14 ng/ml

Instrument :  
 ECD\_P  
 ClientSampleId :



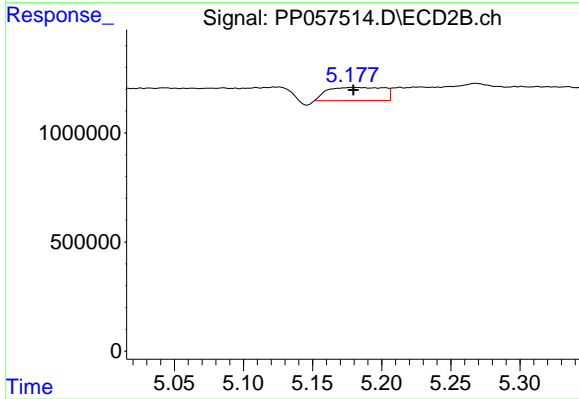
#23 AR-1248-3

R.T.: 5.002 min  
 Delta R.T.: -0.004 min  
 Response: 735207  
 Conc: 10.91 ng/ml



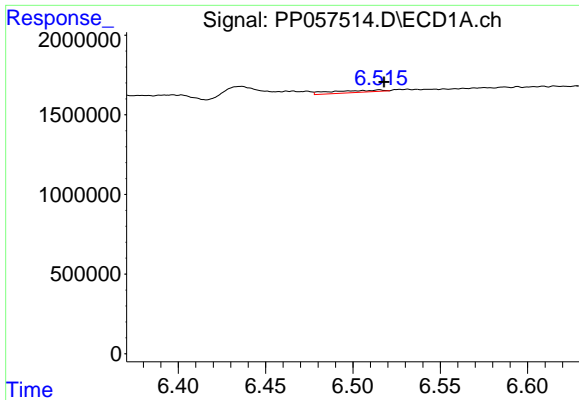
#24 AR-1248-4

R.T.: 6.465 min  
 Delta R.T.: 0.013 min  
 Response: 236784  
 Conc: 4.22 ng/ml



#24 AR-1248-4

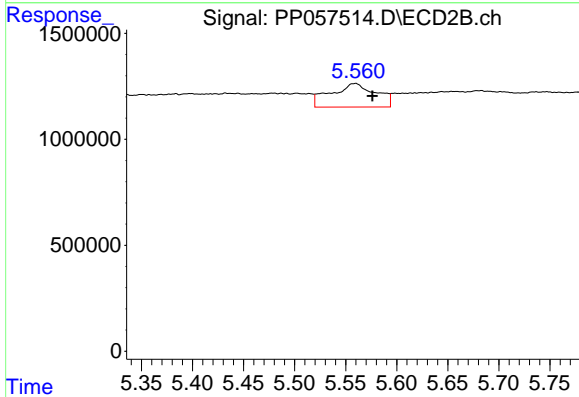
R.T.: 5.183 min  
 Delta R.T.: 0.003 min  
 Response: 1710605  
 Conc: 21.64 ng/ml



#25 AR-1248-5

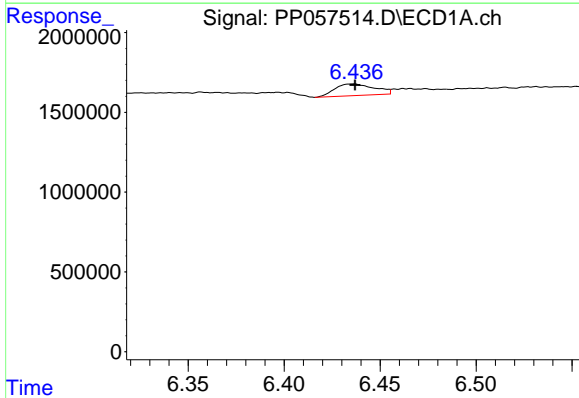
R.T.: 6.515 min  
 Delta R.T.: -0.003 min  
 Response: 272203  
 Conc: 4.89 ng/ml

Instrument :  
 ECD\_P  
 ClientSampleId :



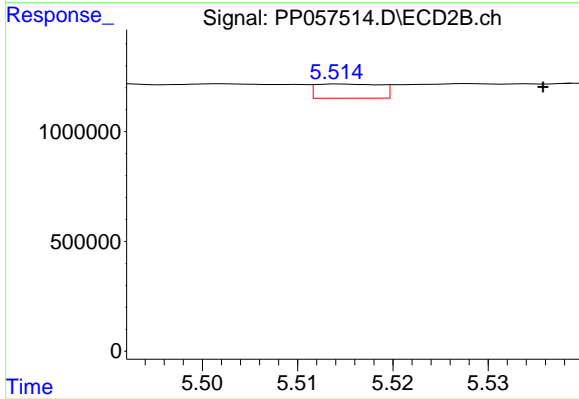
#25 AR-1248-5

R.T.: 5.559 min  
 Delta R.T.: -0.017 min  
 Response: 3384405  
 Conc: 45.35 ng/ml



#26 AR-1254-1

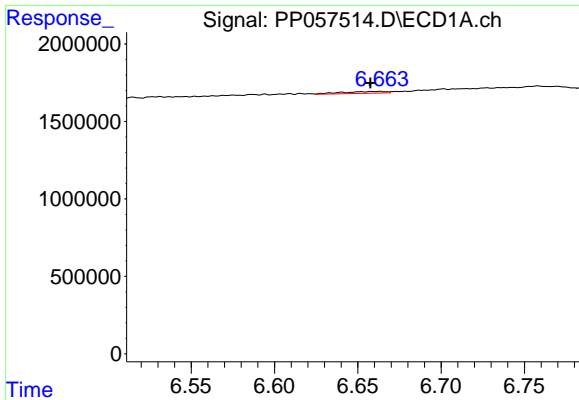
R.T.: 6.436 min  
 Delta R.T.: -0.001 min  
 Response: 1046843  
 Conc: 17.08 ng/ml



#26 AR-1254-1

R.T.: 5.515 min  
 Delta R.T.: -0.021 min  
 Response: 303653  
 Conc: 3.03 ng/ml

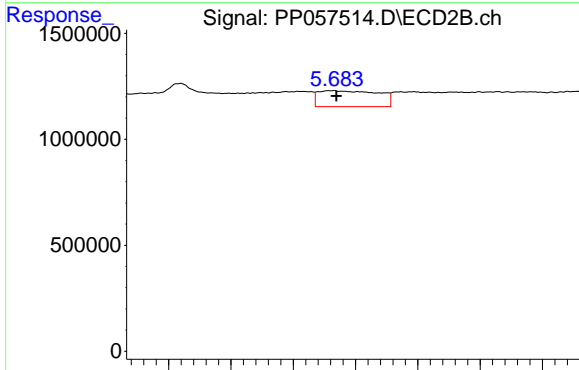




#27 AR-1254-2

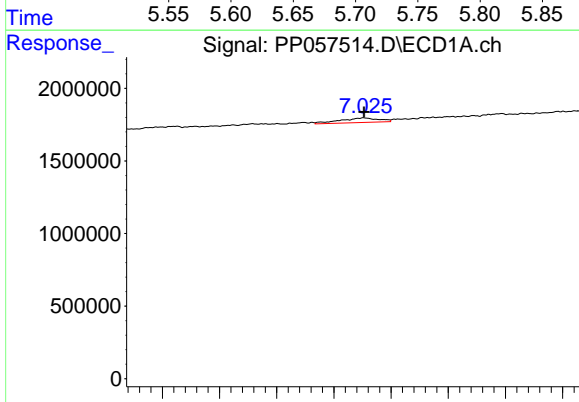
R.T.: 6.663 min  
 Delta R.T.: 0.006 min  
 Response: 212137  
 Conc: 2.49 ng/ml

Instrument :  
 ECD\_P  
 ClientSampleId :



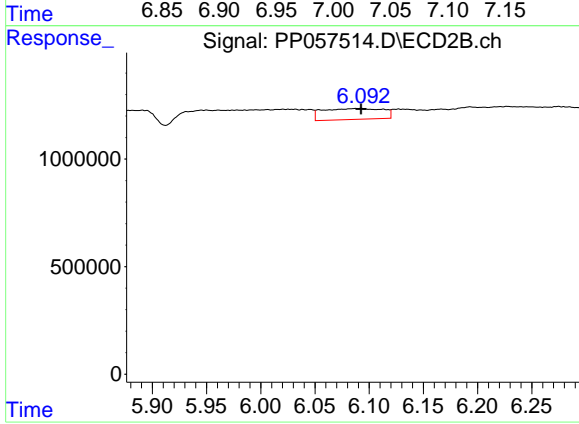
#27 AR-1254-2

R.T.: 5.683 min  
 Delta R.T.: -0.002 min  
 Response: 2535420  
 Conc: 28.51 ng/ml



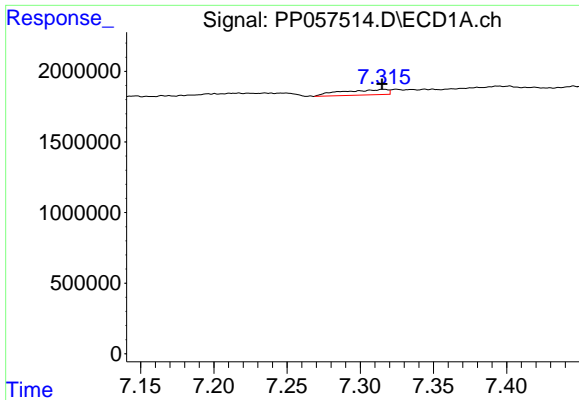
#28 AR-1254-3

R.T.: 7.026 min  
 Delta R.T.: 0.000 min  
 Response: 739582  
 Conc: 9.26 ng/ml



#28 AR-1254-3

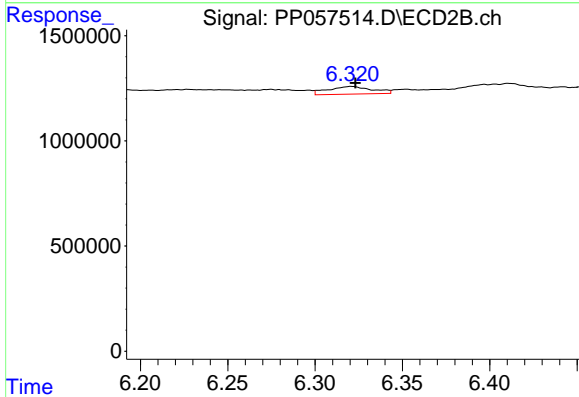
R.T.: 6.090 min  
 Delta R.T.: -0.002 min  
 Response: 1951567  
 Conc: 13.94 ng/ml



#29 AR-1254-4

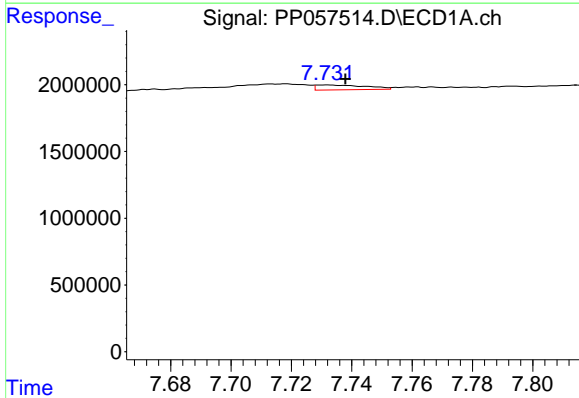
R.T.: 7.316 min  
 Delta R.T.: 0.001 min  
 Response: 823812  
 Conc: 14.76 ng/ml

Instrument :  
 ECD\_P  
 ClientSampleId :



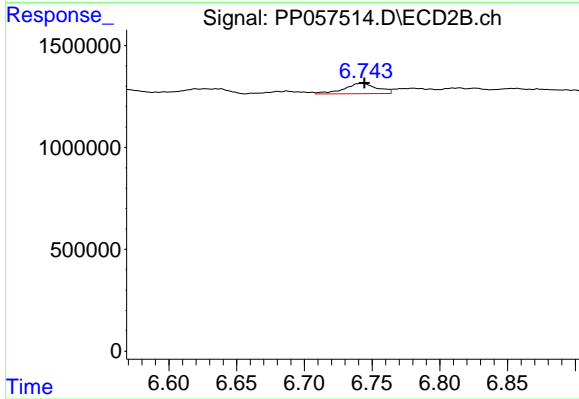
#29 AR-1254-4

R.T.: 6.321 min  
 Delta R.T.: -0.002 min  
 Response: 642425  
 Conc: 7.53 ng/ml



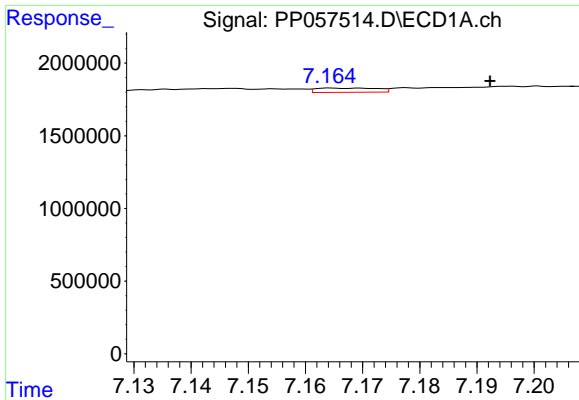
#30 AR-1254-5

R.T.: 7.732 min  
 Delta R.T.: -0.006 min  
 Response: 421807  
 Conc: 6.94 ng/ml



#30 AR-1254-5

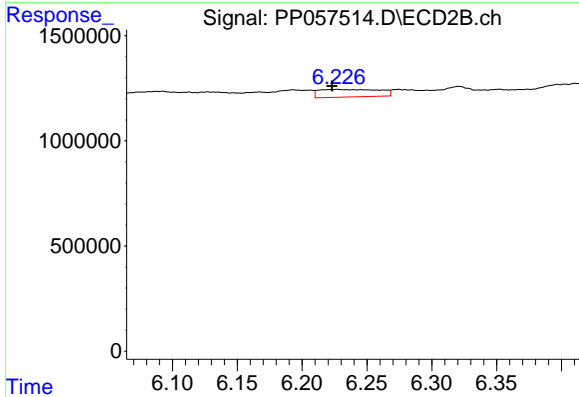
R.T.: 6.742 min  
 Delta R.T.: -0.002 min  
 Response: 865530  
 Conc: 6.62 ng/ml



#31 AR-1260-1

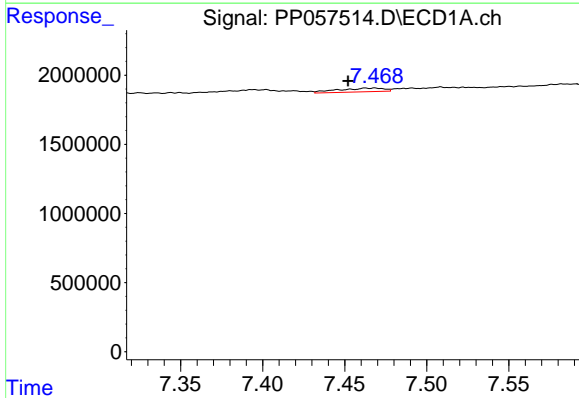
R.T.: 7.170 min  
 Delta R.T.: -0.023 min  
 Response: 217756  
 Conc: 3.05 ng/ml

Instrument :  
 ECD\_P  
 ClientSampleId :



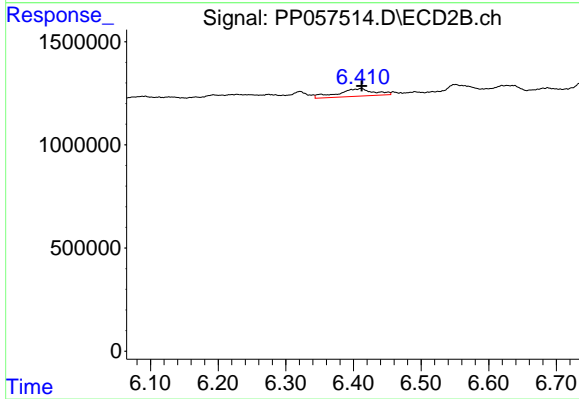
#31 AR-1260-1

R.T.: 6.228 min  
 Delta R.T.: 0.005 min  
 Response: 1163852  
 Conc: 12.51 ng/ml



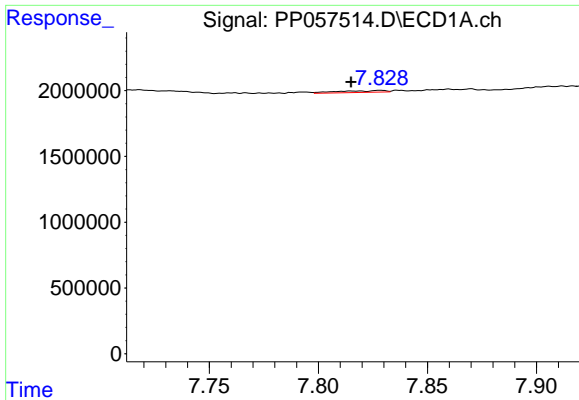
#32 AR-1260-2

R.T.: 7.468 min  
 Delta R.T.: 0.016 min  
 Response: 522553  
 Conc: 8.10 ng/ml



#32 AR-1260-2

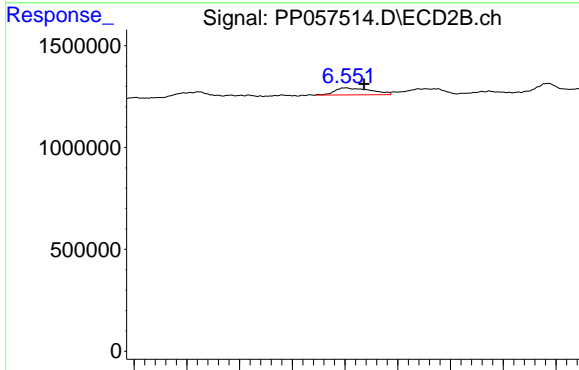
R.T.: 6.411 min  
 Delta R.T.: -0.001 min  
 Response: 1344963  
 Conc: 12.65 ng/ml



#33 AR-1260-3

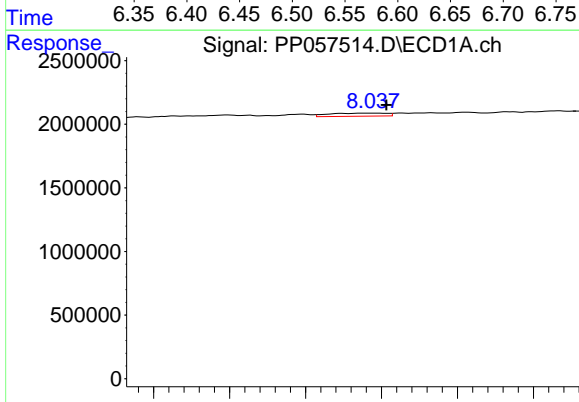
R.T.: 7.828 min  
 Delta R.T.: 0.013 min  
 Response: 207078  
 Conc: 4.99 ng/ml

Instrument :  
 ECD\_P  
 ClientSampleId :



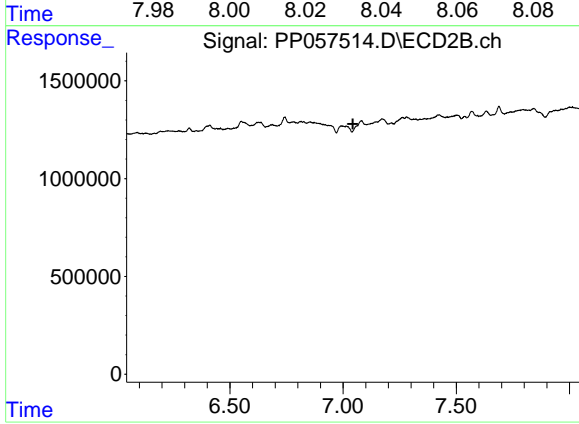
#33 AR-1260-3

R.T.: 6.551 min  
 Delta R.T.: -0.017 min  
 Response: 823979  
 Conc: 7.92 ng/ml



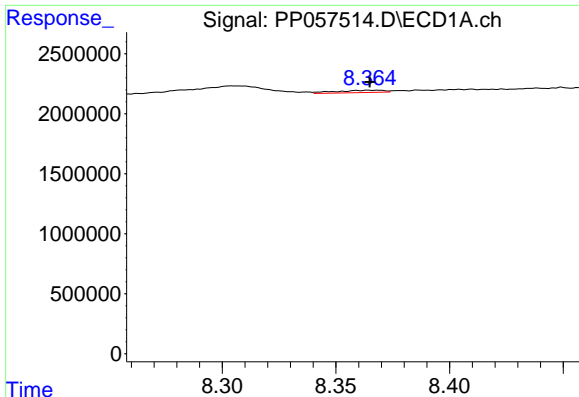
#34 AR-1260-4

R.T.: 8.037 min  
 Delta R.T.: -0.004 min  
 Response: 259716  
 Conc: 5.12 ng/ml



#34 AR-1260-4

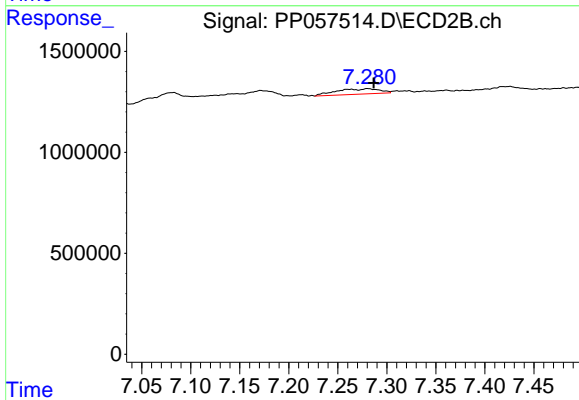
R.T.: 0.000 min  
 Exp R.T.: 7.043 min  
 Response: 0  
 Conc: N.D.



#35 AR-1260-5

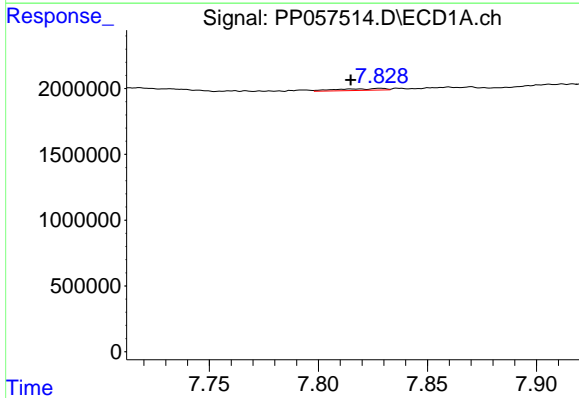
R.T.: 8.365 min  
 Delta R.T.: 0.000 min  
 Response: 282492  
 Conc: 3.40 ng/ml

Instrument :  
 ECD\_P  
 ClientSampleId :



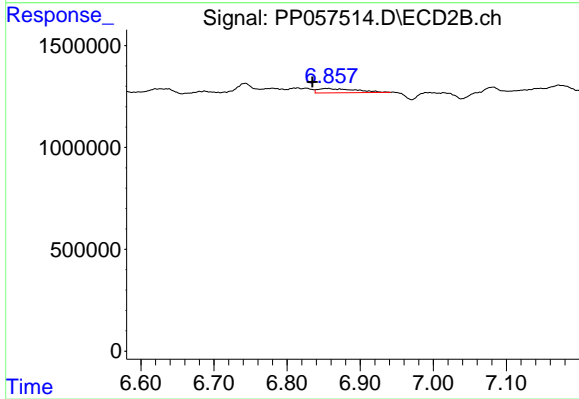
#35 AR-1260-5

R.T.: 7.281 min  
 Delta R.T.: -0.006 min  
 Response: 815850  
 Conc: 5.16 ng/ml



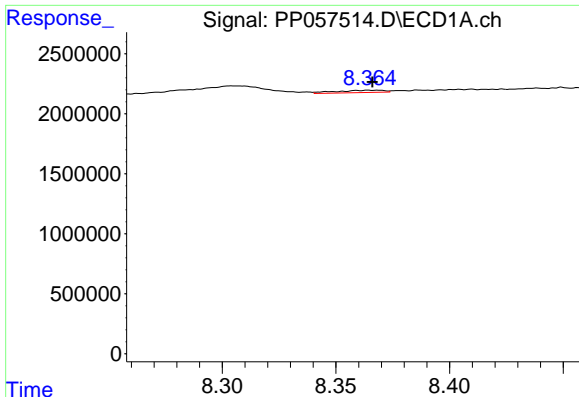
#36 AR-1262-1

R.T.: 7.828 min  
 Delta R.T.: 0.014 min  
 Response: 207078  
 Conc: 2.95 ng/ml



#36 AR-1262-1

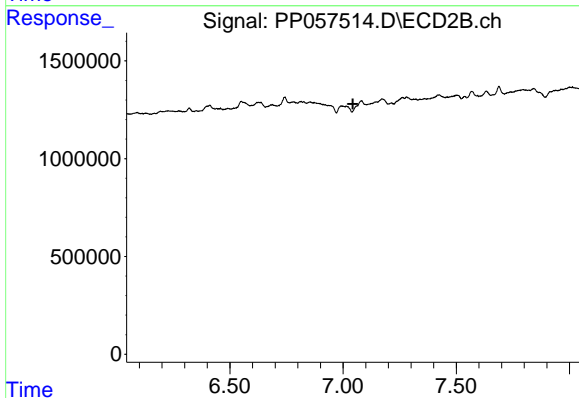
R.T.: 6.854 min  
 Delta R.T.: 0.020 min  
 Response: 771010  
 Conc: 14.09 ng/ml



#37 AR-1262-2

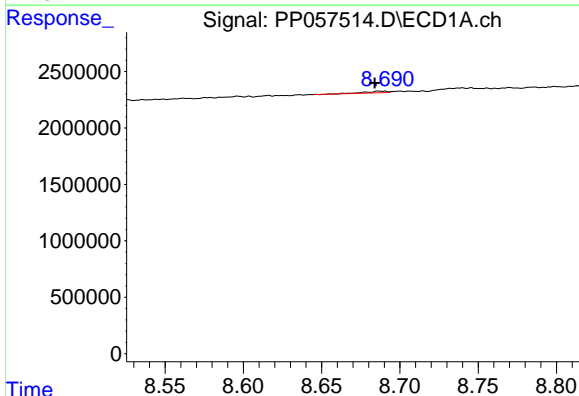
R.T.: 8.365 min  
 Delta R.T.: -0.001 min  
 Response: 282492  
 Conc: 2.69 ng/ml

Instrument :  
 ECD\_P  
 ClientSampleId :



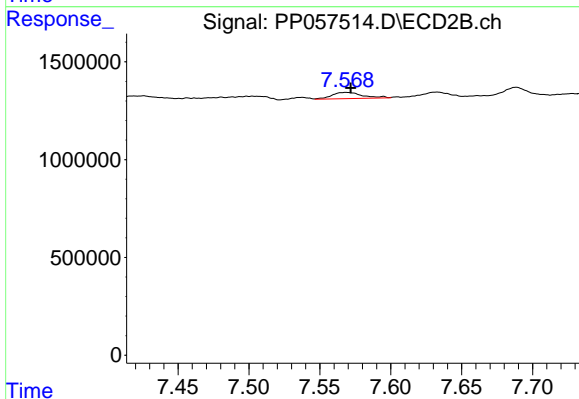
#37 AR-1262-2

R.T.: 0.000 min  
 Exp R.T. : 7.043 min  
 Response: 0  
 Conc: N.D.



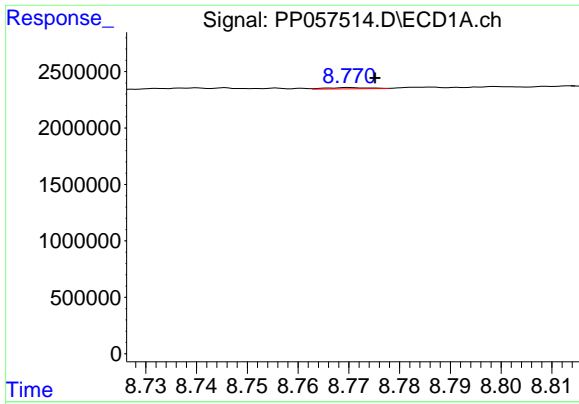
#38 AR-1262-3

R.T.: 8.687 min  
 Delta R.T.: 0.003 min  
 Response: 139617  
 Conc: 1.94 ng/ml



#38 AR-1262-3

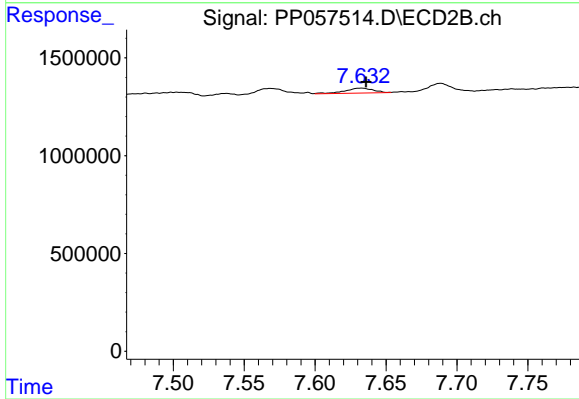
R.T.: 7.569 min  
 Delta R.T.: -0.003 min  
 Response: 477029  
 Conc: 5.70 ng/ml



#39 AR-1262-4

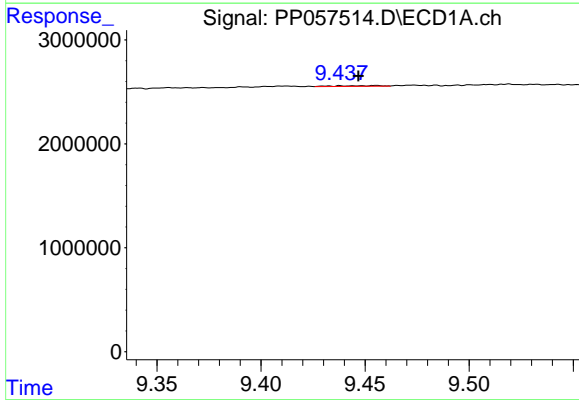
R.T.: 8.770 min  
 Delta R.T.: -0.005 min  
 Response: 64173  
 Conc: 1.18 ng/ml

Instrument :  
 ECD\_P  
 ClientSampleId :



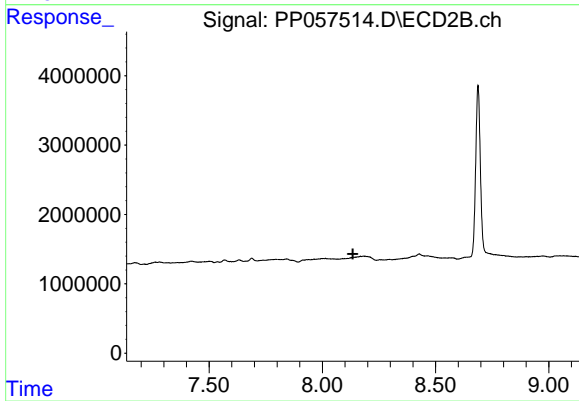
#39 AR-1262-4

R.T.: 7.632 min  
 Delta R.T.: -0.004 min  
 Response: 354131  
 Conc: 2.36 ng/ml



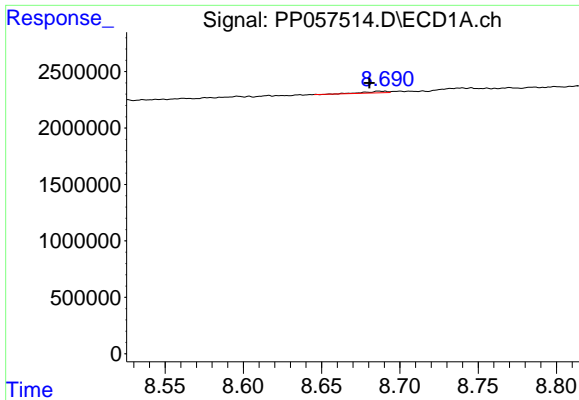
#40 AR-1262-5

R.T.: 9.455 min  
 Delta R.T.: 0.008 min  
 Response: 97101  
 Conc: 2.89 ng/ml



#40 AR-1262-5

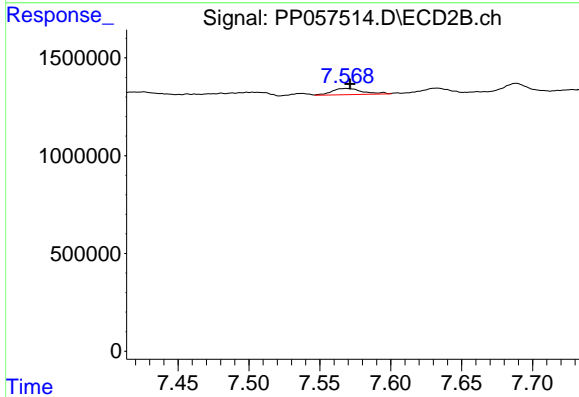
R.T.: 0.000 min  
 Exp R.T. : 8.135 min  
 Response: 0  
 Conc: N.D.



#41 AR-1268-1

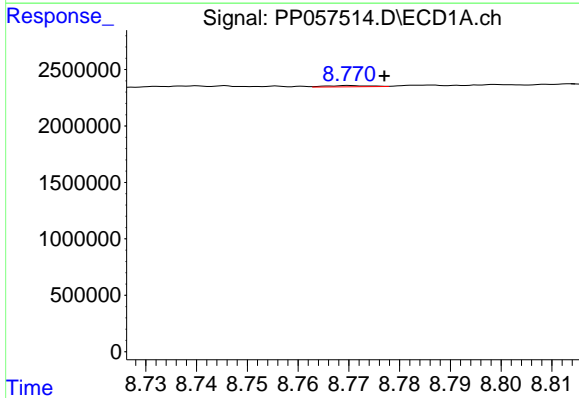
R.T.: 8.687 min  
 Delta R.T.: 0.006 min  
 Response: 139617  
 Conc: 1.10 ng/ml

Instrument :  
 ECD\_P  
 ClientSampleId :



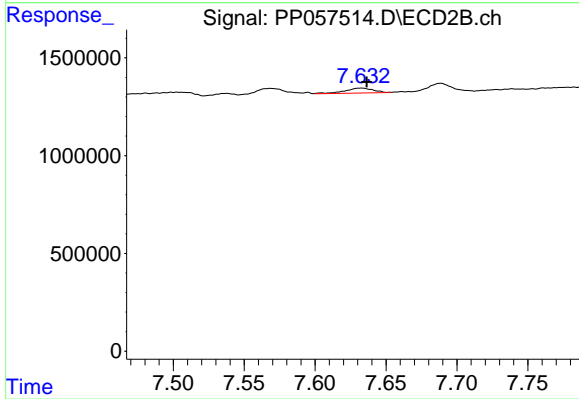
#41 AR-1268-1

R.T.: 7.569 min  
 Delta R.T.: -0.003 min  
 Response: 477029  
 Conc: 1.94 ng/ml



#42 AR-1268-2

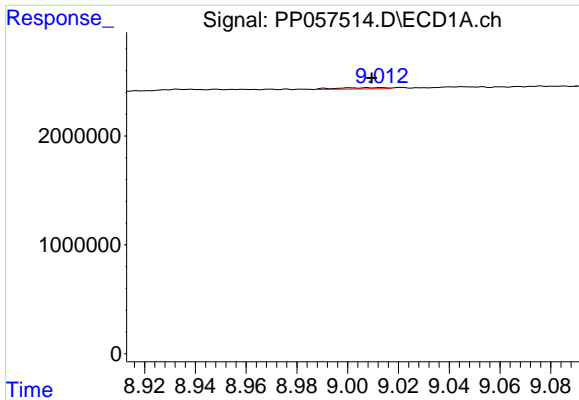
R.T.: 8.770 min  
 Delta R.T.: -0.007 min  
 Response: 64173  
 Conc: 0.59 ng/ml



#42 AR-1268-2

R.T.: 7.632 min  
 Delta R.T.: -0.004 min  
 Response: 354131  
 Conc: 1.62 ng/ml

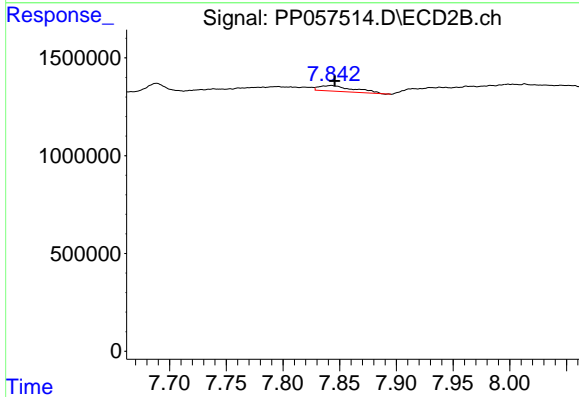




#43 AR-1268-3

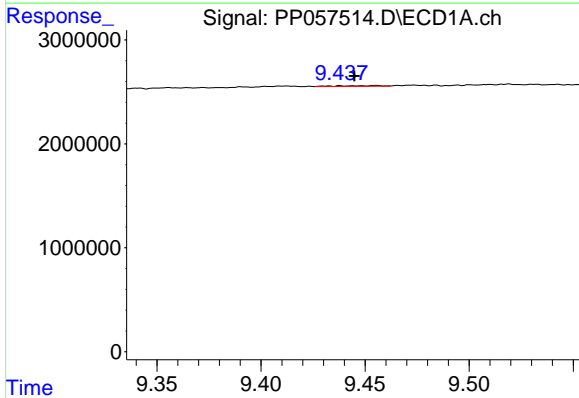
R.T.: 9.013 min  
 Delta R.T.: 0.004 min  
 Response: 166687  
 Conc: 1.66 ng/ml

Instrument :  
 ECD\_P  
 ClientSampleId :



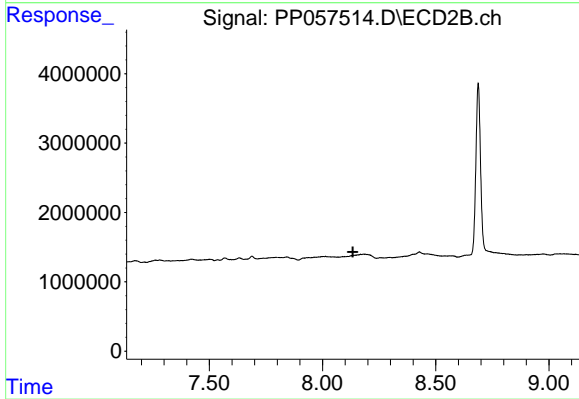
#43 AR-1268-3

R.T.: 7.842 min  
 Delta R.T.: -0.003 min  
 Response: 603530  
 Conc: 3.17 ng/ml



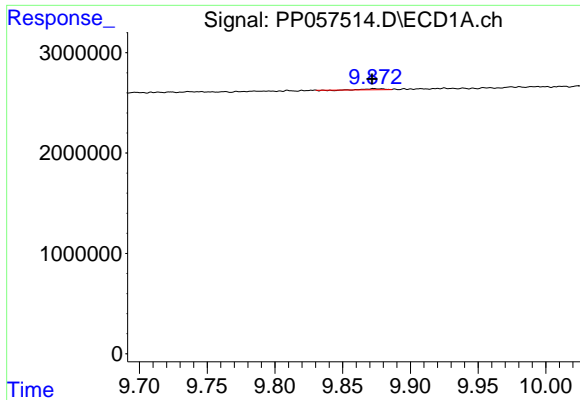
#44 AR-1268-4

R.T.: 9.455 min  
 Delta R.T.: 0.010 min  
 Response: 97101  
 Conc: 2.61 ng/ml



#44 AR-1268-4

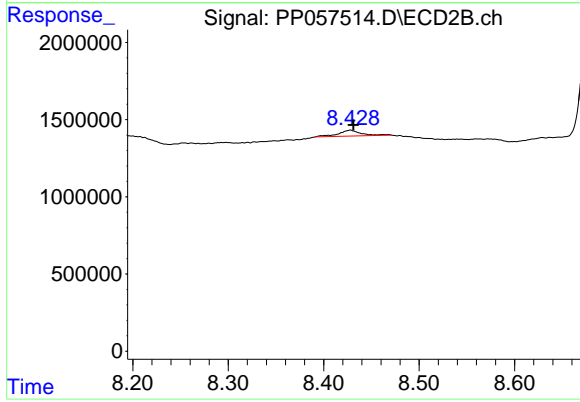
R.T.: 0.000 min  
 Exp R.T. : 8.134 min  
 Response: 0  
 Conc: N.D.



#45 AR-1268-5

R.T.: 9.873 min  
 Delta R.T.: 0.002 min  
 Response: 61275  
 Conc: 0.24 ng/ml

Instrument :  
 ECD\_P  
 ClientSampleId :



#45 AR-1268-5

R.T.: 8.428 min  
 Delta R.T.: -0.003 min  
 Response: 636376  
 Conc: 1.26 ng/ml