

Data Path : Z:\pestpcbsrv\HPCHEM1\ECD_P\Data\PP050521\
 Data File : PP035586.D
 Signal(s) : Signal #1: ECD1A.CH Signal #2: ECD2B.CH
 Acq On : 06 May 2021 2:26
 Operator : DD\AJ
 Sample : PB136169BS
 Misc :
 ALS Vial : 49 Sample Multiplier: 1

Instrument :
 ECD_P
 ClientSampleId :
 PB136169BS

Integration File signal 1: autoint1.e
 Integration File signal 2: autoint2.e
 Quant Time: May 06 09:18:24 2021
 Quant Method : Z:\pestpcbsrv\HPCHEM1\ECD_P\methods\PP050521.M
 Quant Title : GC EXTRACTABLES
 QLast Update : Thu May 06 08:33:38 2021
 Response via : Initial Calibration
 Integrator: ChemStation 6890 Scale Mode: Small noise peaks clipped

Volume Inj. : 2 µl
 Signal #1 Phase : ZB-MR1 Signal #2 Phase: ZB-MR2
 Signal #1 Info : 30Mx0.32mmx 0.50µ Signal #2 Info : 30M x 0.32mm x 0.25µm

Compound	RT#1	RT#2	Resp#1	Resp#2	ng/ml	ng/ml

System Monitoring Compounds						
1) SA Tetrachlo...	4.785	4.204	877947	606848	20.067	20.005
2) SA Decachlor...	10.637	9.456	854714	445297	21.669	23.080
Target Compounds						
3) L1 AR-1016-1	6.091	5.447	618615	393633	419.996	429.528
4) L1 AR-1016-2	6.113	5.467	994911	698972	451.100	459.965
5) L1 AR-1016-3	6.179	5.659	636399	324955	456.095	431.761
6) L1 AR-1016-4	6.284	5.704	512428	263885	451.662	434.683
7) L1 AR-1016-5	6.596	5.934	487987	335794	424.360	439.366
31) L7 AR-1260-1	7.763	7.014	922428	594551	425.715	438.914
32) L7 AR-1260-2	8.027	7.208	1039568	692043	422.654	438.728
33) L7 AR-1260-3	8.390	7.362	723280	656196	446.171	439.677
34) L7 AR-1260-4	8.619	7.839	849211	485861	428.989	450.993
35) L7 AR-1260-5	8.933	8.083	1563124	1049778	423.138	441.428

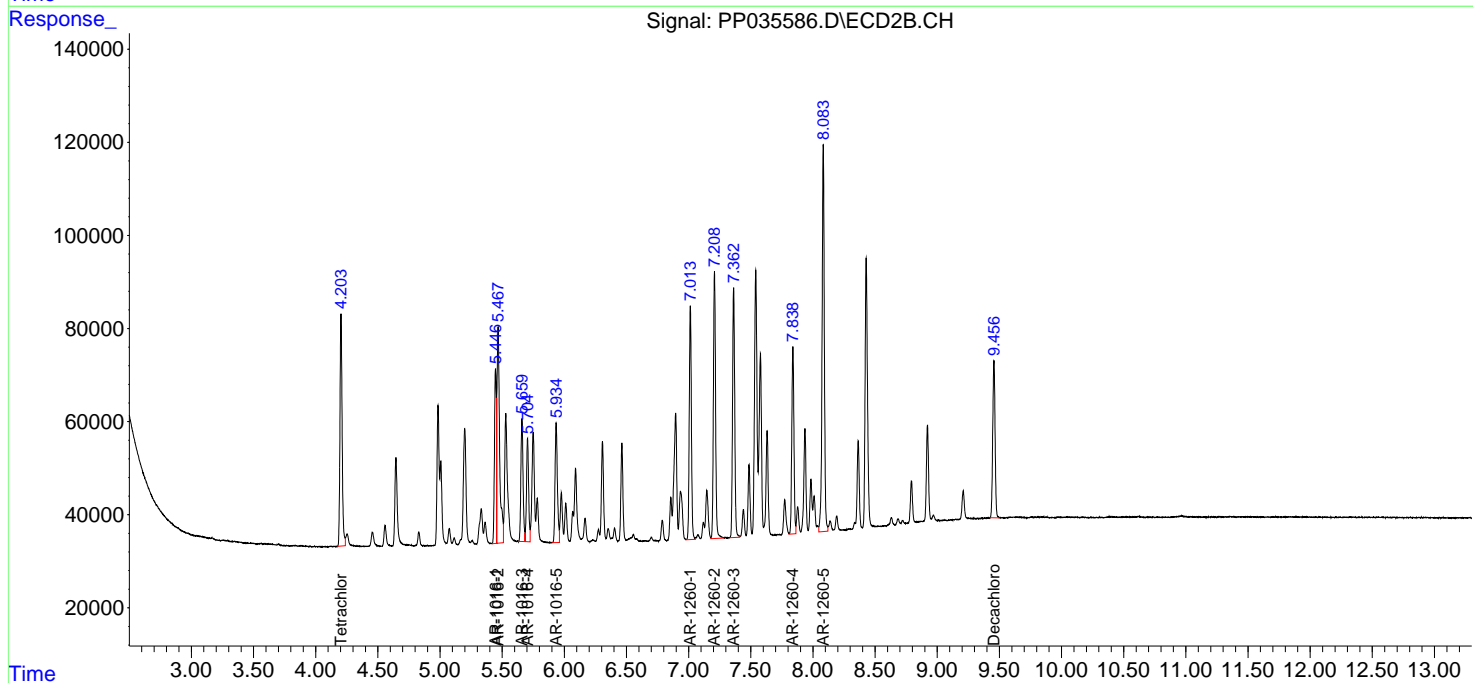
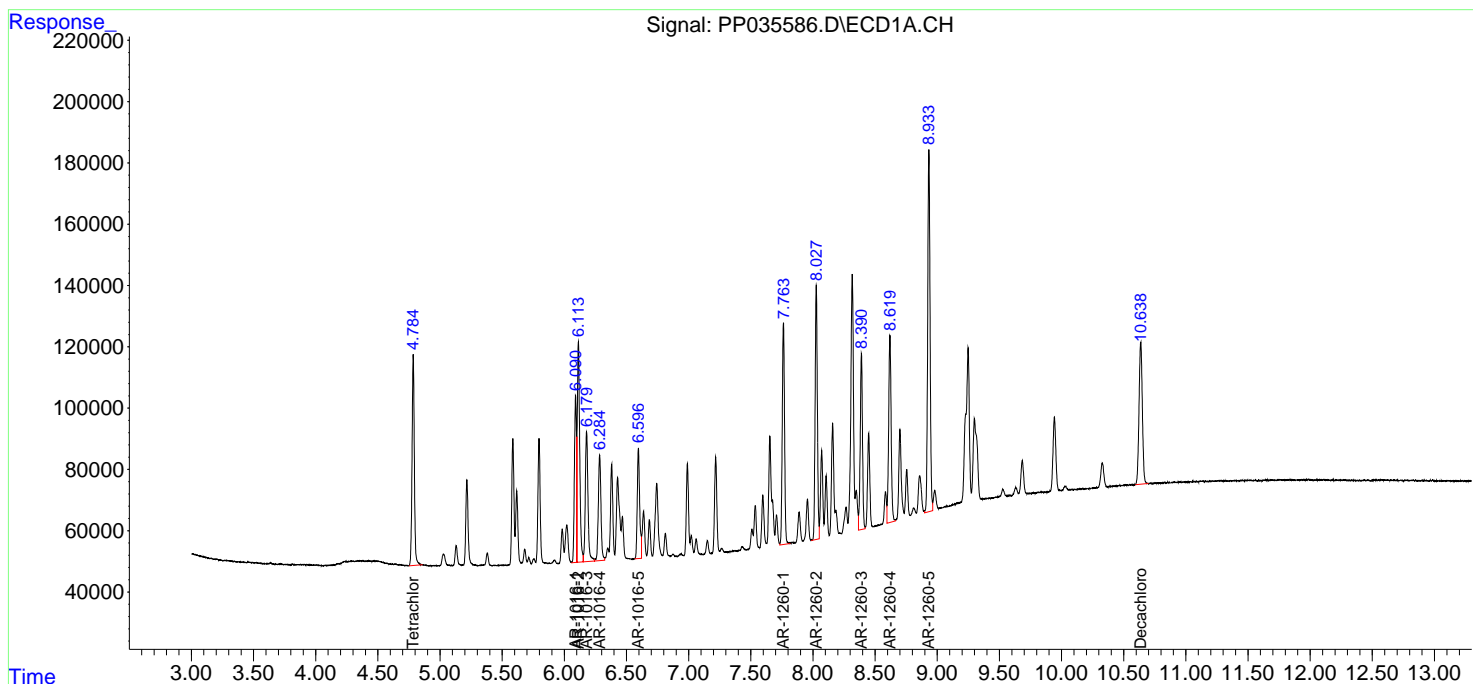
(f)=RT Delta > 1/2 Window (#)=Amounts differ by > 25% (m)=manual int.

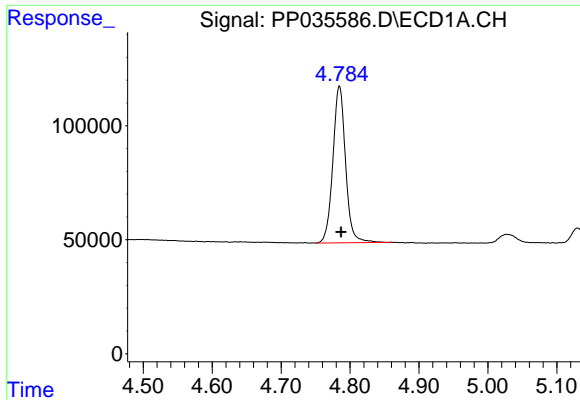
Data Path : Z:\pestpcbsrv\HPCHEM1\ECD_P\Data\PP050521\
 Data File : PP035586.D
 Signal(s) : Signal #1: ECD1A.CH Signal #2: ECD2B.CH
 Acq On : 06 May 2021 2:26
 Operator : DD\AJ
 Sample : PB136169BS
 Misc :
 ALS Vial : 49 Sample Multiplier: 1

Instrument :
 ECD_P
 ClientSampled :
 PB136169BS

Integration File signal 1: autoint1.e
 Integration File signal 2: autoint2.e
 Quant Time: May 06 09:18:24 2021
 Quant Method : Z:\pestpcbsrv\HPCHEM1\ECD_P\methods\PP050521.M
 Quant Title : GC EXTRACTABLES
 QLast Update : Thu May 06 08:33:38 2021
 Response via : Initial Calibration
 Integrator: ChemStation 6890 Scale Mode: Small noise peaks clipped

Volume Inj. : 2 µl
 Signal #1 Phase : ZB-MR1 Signal #2 Phase: ZB-MR2
 Signal #1 Info : 30Mx0.32mmx 0.50µ Signal #2 Info : 30M x 0.32mm x 0.25µm





#1 Tetrachloro-m-xylene

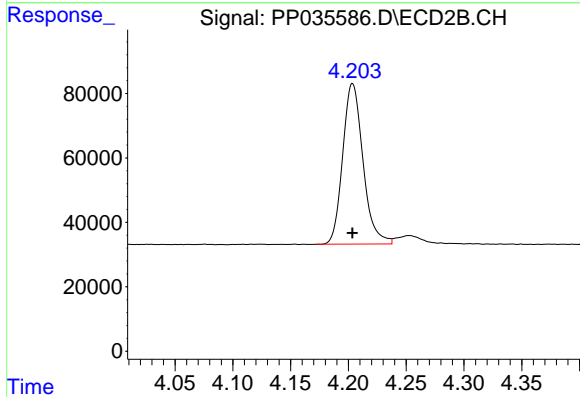
R.T.: 4.785 min

Delta R.T.: -0.002 min

Response: 877947

Conc: 20.07 ng/ml

Instrument :
ECD_P
ClientSampleId :
PB136169BS



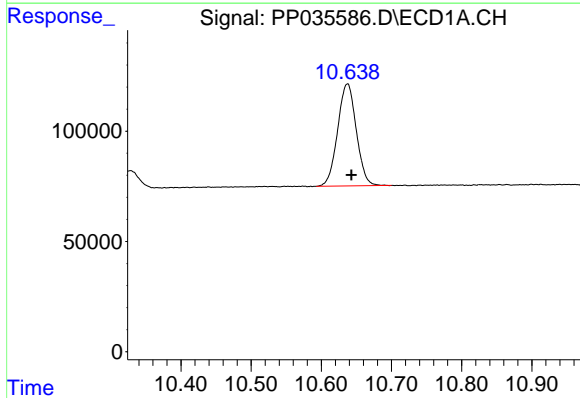
#1 Tetrachloro-m-xylene

R.T.: 4.204 min

Delta R.T.: 0.000 min

Response: 606848

Conc: 20.01 ng/ml



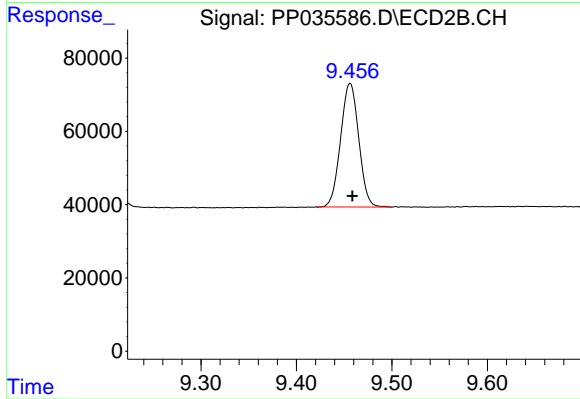
#2 Decachlorobiphenyl

R.T.: 10.637 min

Delta R.T.: -0.006 min

Response: 854714

Conc: 21.67 ng/ml



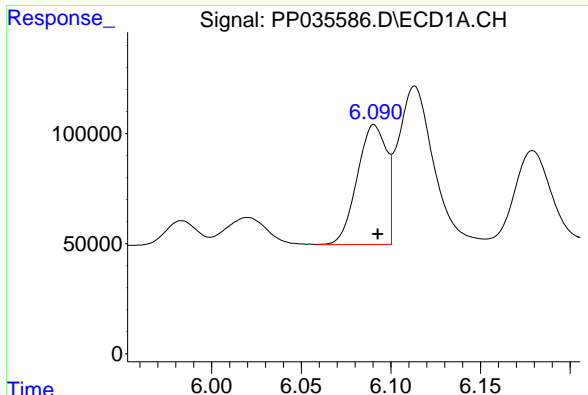
#2 Decachlorobiphenyl

R.T.: 9.456 min

Delta R.T.: -0.002 min

Response: 445297

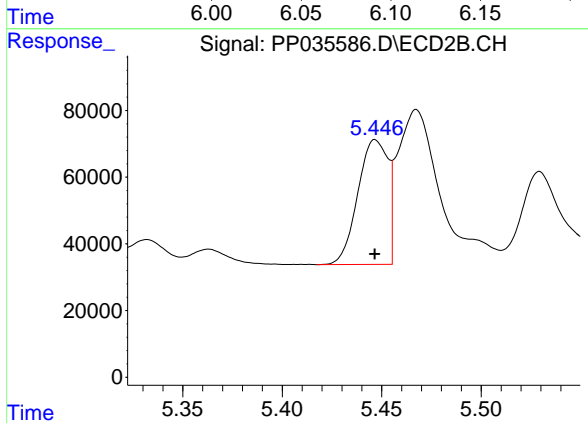
Conc: 23.08 ng/ml



#3 AR-1016-1

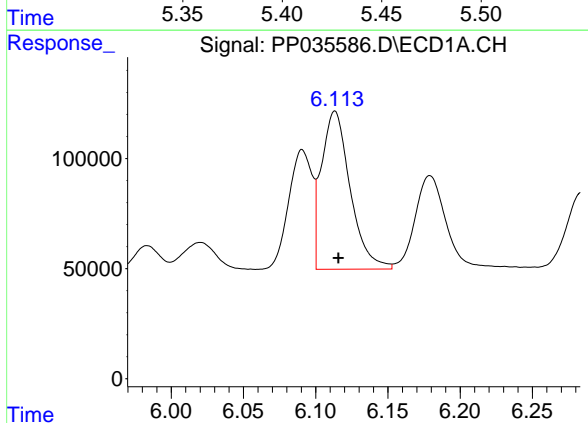
R.T.: 6.091 min
 Delta R.T.: -0.002 min
 Response: 618615
 Conc: 420.00 ng/ml

Instrument :
 ECD_P
 ClientSampleId :
 PB136169BS



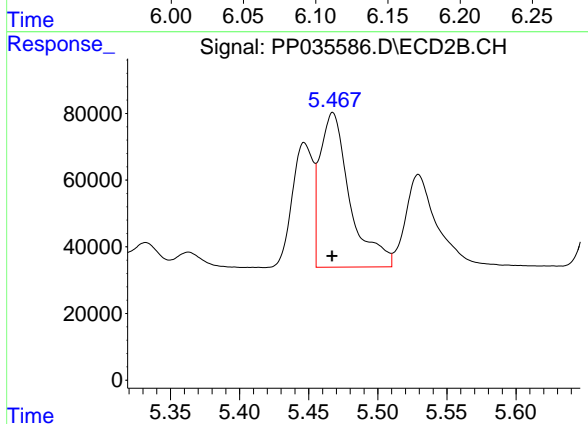
#3 AR-1016-1

R.T.: 5.447 min
 Delta R.T.: 0.000 min
 Response: 393633
 Conc: 429.53 ng/ml



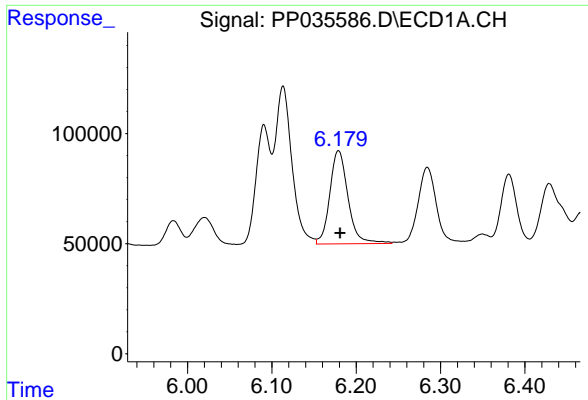
#4 AR-1016-2

R.T.: 6.113 min
 Delta R.T.: -0.002 min
 Response: 994911
 Conc: 451.10 ng/ml



#4 AR-1016-2

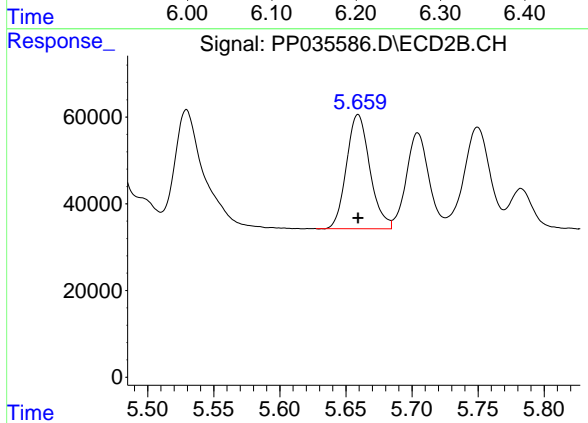
R.T.: 5.467 min
 Delta R.T.: 0.000 min
 Response: 698972
 Conc: 459.96 ng/ml



#5 AR-1016-3

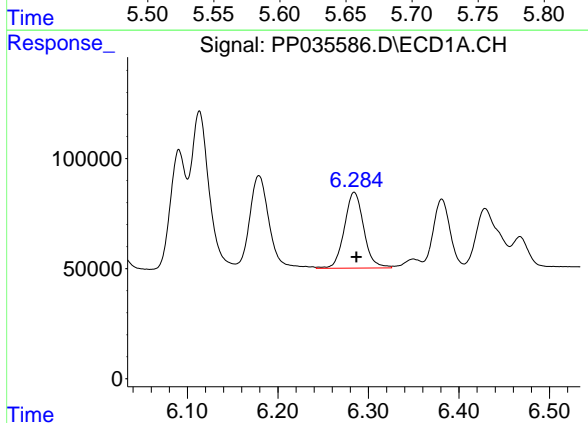
R.T.: 6.179 min
 Delta R.T.: -0.002 min
 Response: 636399
 Conc: 456.09 ng/ml

Instrument :
 ECD_P
 ClientSampleId :
 PB136169BS



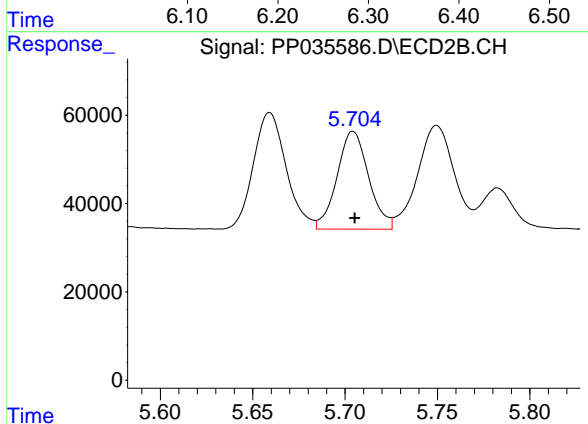
#5 AR-1016-3

R.T.: 5.659 min
 Delta R.T.: 0.000 min
 Response: 324955
 Conc: 431.76 ng/ml



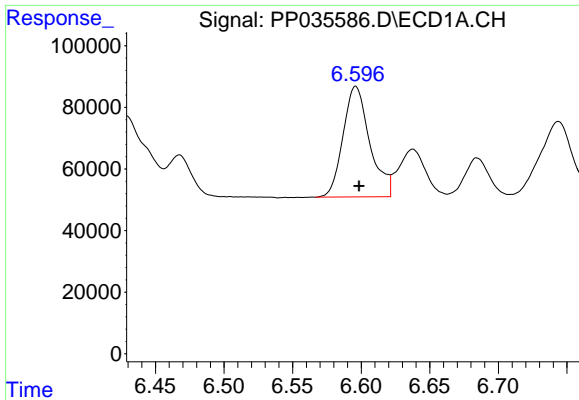
#6 AR-1016-4

R.T.: 6.284 min
 Delta R.T.: -0.003 min
 Response: 512428
 Conc: 451.66 ng/ml



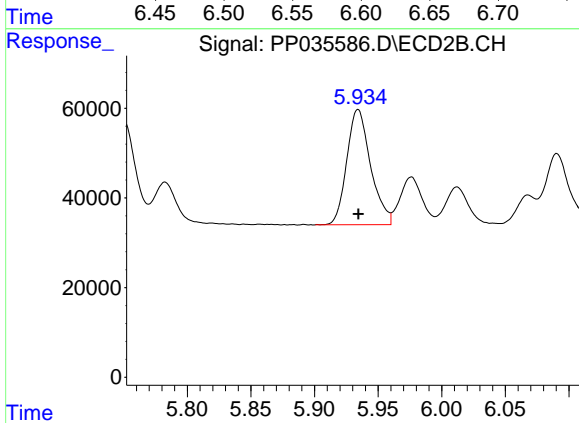
#6 AR-1016-4

R.T.: 5.704 min
 Delta R.T.: 0.000 min
 Response: 263885
 Conc: 434.68 ng/ml

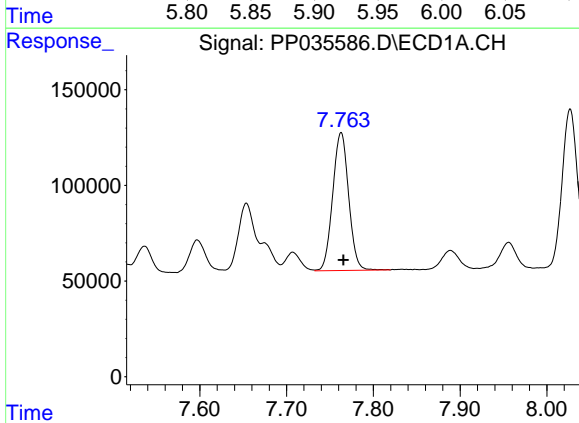


#7 AR-1016-5
 R.T.: 6.596 min
 Delta R.T.: -0.002 min
 Response: 487987
 Conc: 424.36 ng/ml

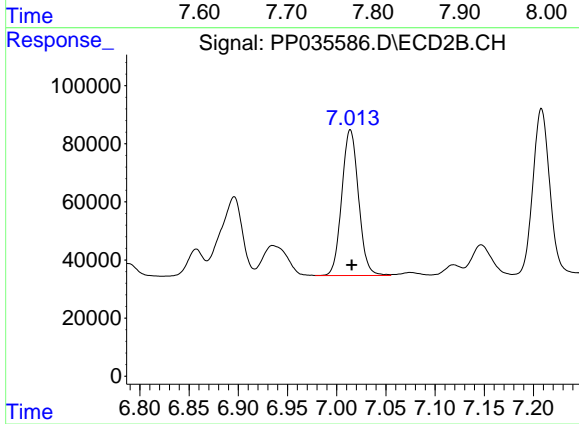
Instrument :
 ECD_P
 ClientSampleId :
 PB136169BS



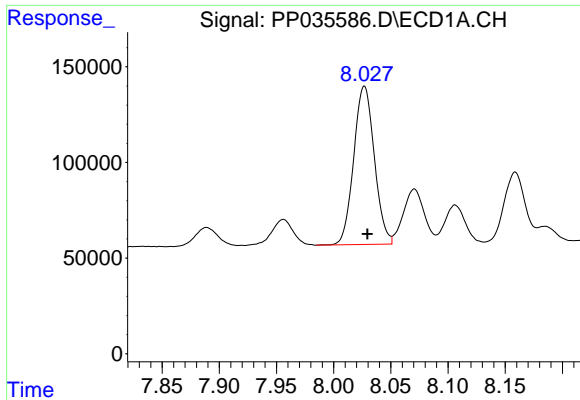
#7 AR-1016-5
 R.T.: 5.934 min
 Delta R.T.: 0.000 min
 Response: 335794
 Conc: 439.37 ng/ml



#31 AR-1260-1
 R.T.: 7.763 min
 Delta R.T.: -0.002 min
 Response: 922428
 Conc: 425.72 ng/ml



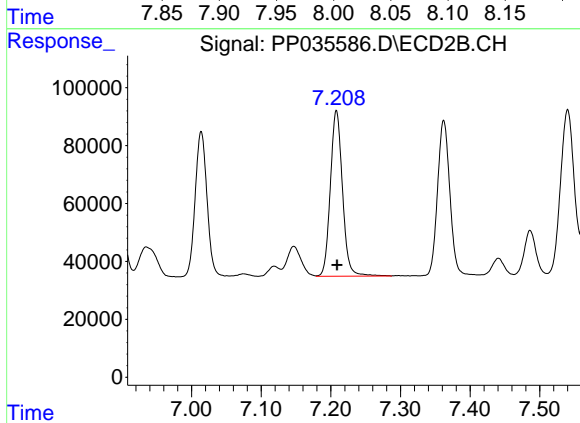
#31 AR-1260-1
 R.T.: 7.014 min
 Delta R.T.: -0.001 min
 Response: 594551
 Conc: 438.91 ng/ml



#32 AR-1260-2

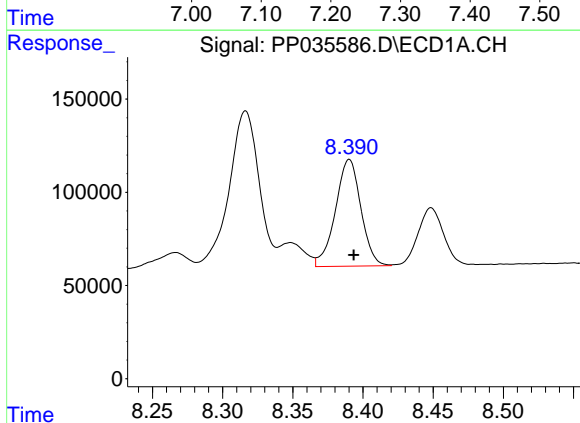
R.T.: 8.027 min
 Delta R.T.: -0.003 min
 Response: 1039568
 Conc: 422.65 ng/ml

Instrument :
 ECD_P
 ClientSampleId :
 PB136169BS



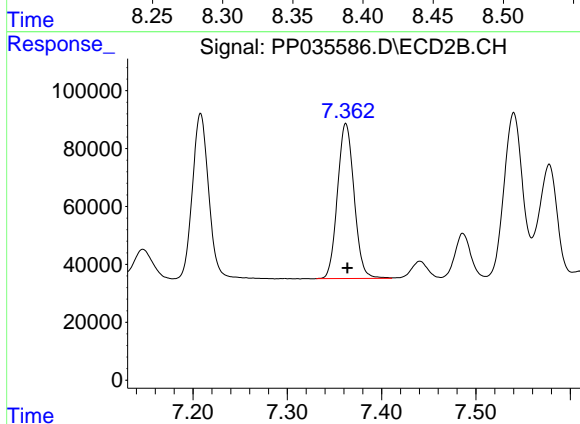
#32 AR-1260-2

R.T.: 7.208 min
 Delta R.T.: 0.000 min
 Response: 692043
 Conc: 438.73 ng/ml



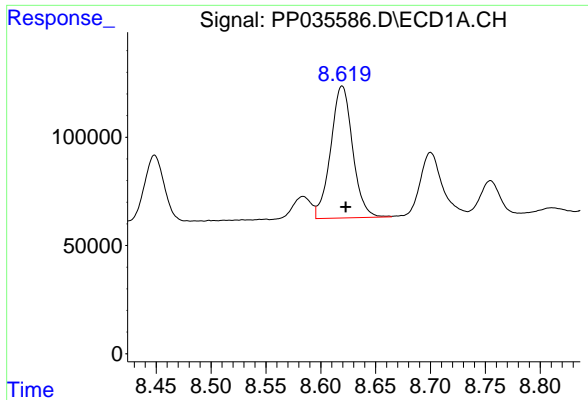
#33 AR-1260-3

R.T.: 8.390 min
 Delta R.T.: -0.003 min
 Response: 723280
 Conc: 446.17 ng/ml



#33 AR-1260-3

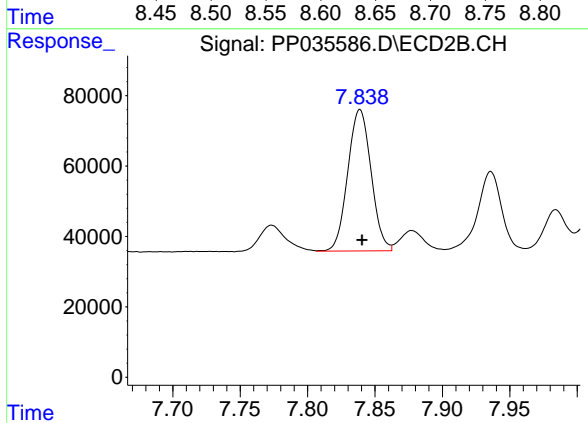
R.T.: 7.362 min
 Delta R.T.: -0.002 min
 Response: 656196
 Conc: 439.68 ng/ml



#34 AR-1260-4

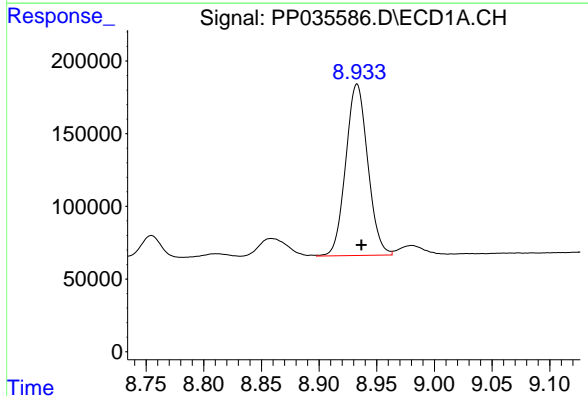
R.T.: 8.619 min
 Delta R.T.: -0.003 min
 Response: 849211
 Conc: 428.99 ng/ml

Instrument :
 ECD_P
 ClientSampled :
 PB136169BS



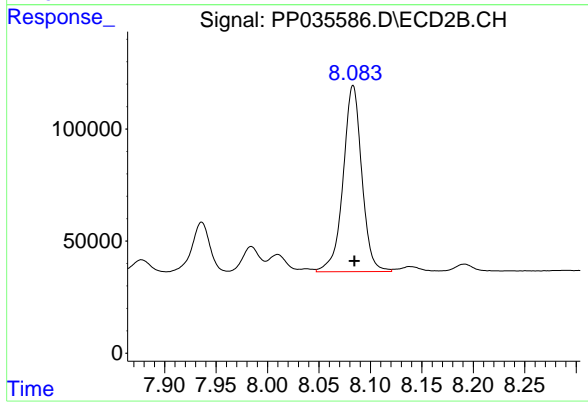
#34 AR-1260-4

R.T.: 7.839 min
 Delta R.T.: -0.002 min
 Response: 485861
 Conc: 450.99 ng/ml



#35 AR-1260-5

R.T.: 8.933 min
 Delta R.T.: -0.004 min
 Response: 1563124
 Conc: 423.14 ng/ml



#35 AR-1260-5

R.T.: 8.083 min
 Delta R.T.: -0.001 min
 Response: 1049778
 Conc: 441.43 ng/ml