

Data Path : Z:\pestpcbsrv\HPCHEM1\ECD\_P\Data\PP050523\  
 Data File : PP057557.D  
 Signal(s) : Signal #1: ECD1A.ch Signal #2: ECD2B.ch  
 Acq On : 05 May 2023 13:00  
 Operator : YP\AJ  
 Sample : PB152597BL  
 Misc :  
 ALS Vial : 12 Sample Multiplier: 1

Instrument :  
 ECD\_P  
 ClientSampleId :

Integration File signal 1: autoint1.e  
 Integration File signal 2: autoint2.e  
 Quant Time: May 05 21:21:02 2023  
 Quant Method : Z:\pestpcbsrv\HPCHEM1\ECD\_P\methods\PP050323.M  
 Quant Title : GC EXTRACTABLES  
 QLast Update : Fri May 05 08:53:51 2023  
 Response via : Initial Calibration  
 Integrator: ChemStation

Volume Inj. : 2 µl  
 Signal #1 Phase : ZB-MR1 Signal #2 Phase: ZB-MR2  
 Signal #1 Info : 30Mx0.32mmx 0.50µ Signal #2 Info : 30M x 0.32mm x 0.25µm

Compound	RT#1	RT#2	Resp#1	Resp#2	ng/ml	ng/ml
----------	------	------	--------	--------	-------	-------

System Monitoring Compounds

1) SA Tetrachlo...	4.390	3.624	45524894	43349872	21.888	21.402
2) SA Decachlor...	10.216	8.684	16913127	33298111	23.140	25.595

Target Compounds

3) L1 AR-1016-1	5.565	4.720	21066	38558	0.385	0.602 #
4) L1 AR-1016-2	5.595	4.733	22733	39106	0.281	0.442 #
5) L1 AR-1016-3	5.650	4.918	137022	28650	2.735	0.568 #
6) L1 AR-1016-4	5.753	4.961	33246	44181	0.825	1.097 #
7) L1 AR-1016-5	6.058	5.205f	30040	32355	0.736	0.633
8) L2 AR-1221-1	4.598	0.000	28512	0	1.141	N.D. #
9) L2 AR-1221-2	4.699	3.927	745375	732451	40.326	39.188
10) L2 AR-1221-3	4.767	3.990f	40459	12681	0.745	0.228 #
11) L3 AR-1232-1	4.767	3.990f	40459	12681	0.996	0.306 #
12) L3 AR-1232-2	5.311	4.733	83785	39106	3.580	0.943 #
13) L3 AR-1232-3	5.595	4.918	22733	28650	0.616	1.203 #
14) L3 AR-1232-4	5.753	5.013	33246	97700	1.833	4.597 #
15) L3 AR-1232-5	5.845	5.205f	88692	32355	5.732	1.361 #
16) L4 AR-1242-1	5.565	4.720	21066	38558	0.488	0.760 #
17) L4 AR-1242-2	5.595	4.733	22733	39106	0.363	0.563 #
18) L4 AR-1242-3	5.650	4.918	137022	28650	3.488	0.707 #
19) L4 AR-1242-4	5.753	5.013	33246	97700	1.044	2.430 #
20) L4 AR-1242-5	6.498	5.557f	54701	101550	1.967	2.069
21) L5 AR-1248-1	5.565	4.720	21066	38558	0.546	0.844 #
22) L5 AR-1248-2	5.845	4.961	88692	44181	1.508	0.691 #
23) L5 AR-1248-3	6.058	5.013	30040	97700	0.485	1.450 #
24) L5 AR-1248-4	6.473	5.205f	386531	32355	6.893	0.409 #
25) L5 AR-1248-5	6.498	5.595f	54701	52992	0.982	0.710 #
26) L6 AR-1254-1	0.000	5.557f	0	101550	N.D.	1.012 #
27) L6 AR-1254-2	6.656	5.677	155146	152741	1.822	1.718
28) L6 AR-1254-3	7.027	6.087	652254	109130	8.165	0.779 #
29) L6 AR-1254-4	7.310	6.317	212960	88054	3.815	1.032 #
30) L6 AR-1254-5	7.718f	6.740	968554	322466	15.924	2.466 #
31) L7 AR-1260-1	7.181	6.216	798380	26541	11.191	0.285 #
32) L7 AR-1260-2	7.442	6.394f	99781	425527	1.547	4.003 #
33) L7 AR-1260-3	7.798f	6.566	37983	224423	0.915	2.156 #
34) L7 AR-1260-4	8.041	0.000	159723	0	3.148	N.D. #
35) L7 AR-1260-5	8.365	7.283	47363	94349	0.571	0.597
36) L8 AR-1262-1	7.798f	6.848	37983	902835	0.541	16.502 #
37) L8 AR-1262-2	8.365	0.000	47363	0	0.450	N.D. #
38) L8 AR-1262-3	8.667f	7.562	34036	733741	0.472	8.762 #
39) L8 AR-1262-4	0.000	7.636	0	25255	N.D.	0.168 #
40) L8 AR-1262-5	9.442	0.000	54173	0	1.612	N.D. #
41) L9 AR-1268-1	8.667	7.562	34036	733741	0.269	2.990 #

Data Path : Z:\pestpcbsrv\HPCHEM1\ECD\_P\Data\PP050523\  
 Data File : PP057557.D  
 Signal(s) : Signal #1: ECD1A.ch Signal #2: ECD2B.ch  
 Acq On : 05 May 2023 13:00  
 Operator : YP\AJ  
 Sample : PB152597BL  
 Misc :  
 ALS Vial : 12 Sample Multiplier: 1

Instrument :  
 ECD\_P  
 ClientSampleId :

Integration File signal 1: autoint1.e  
 Integration File signal 2: autoint2.e  
 Quant Time: May 05 21:21:02 2023  
 Quant Method : Z:\pestpcbsrv\HPCHEM1\ECD\_P\methods\PP050323.M  
 Quant Title : GC EXTRACTABLES  
 QLast Update : Fri May 05 08:53:51 2023  
 Response via : Initial Calibration  
 Integrator: ChemStation

Volume Inj. : 2 µl  
 Signal #1 Phase : ZB-MR1 Signal #2 Phase: ZB-MR2  
 Signal #1 Info : 30Mx0.32mmx 0.50µ Signal #2 Info : 30M x 0.32mm x 0.25µm

	Compound	RT#1	RT#2	Resp#1	Resp#2	ng/ml	ng/ml
42)	L9 AR-1268-2	0.000	7.636	0	25255	N.D.	0.116 #
43)	L9 AR-1268-3	9.005	7.843	38635	106031	0.385	0.557 #
44)	L9 AR-1268-4	9.442	0.000	54173	0	1.458	N.D. #
45)	L9 AR-1268-5	9.872	8.427	75720	595439	0.296	1.176 #

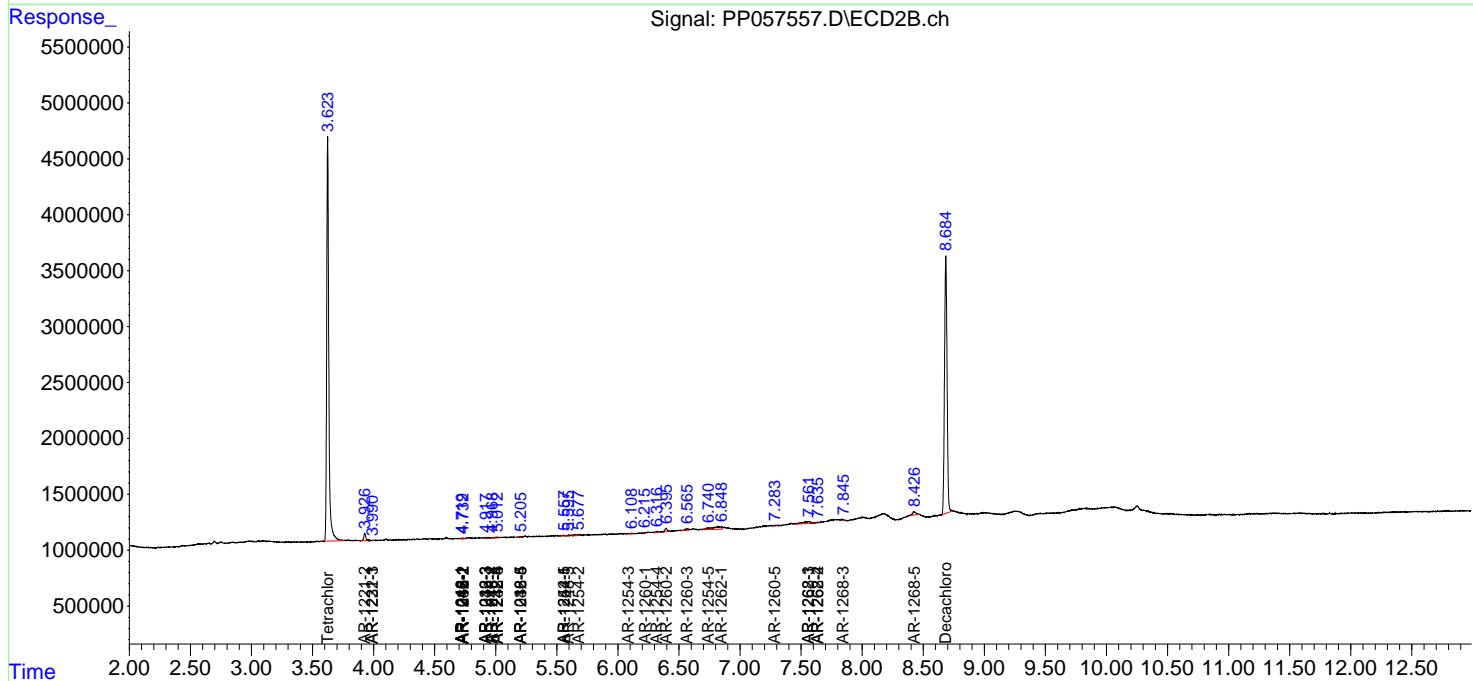
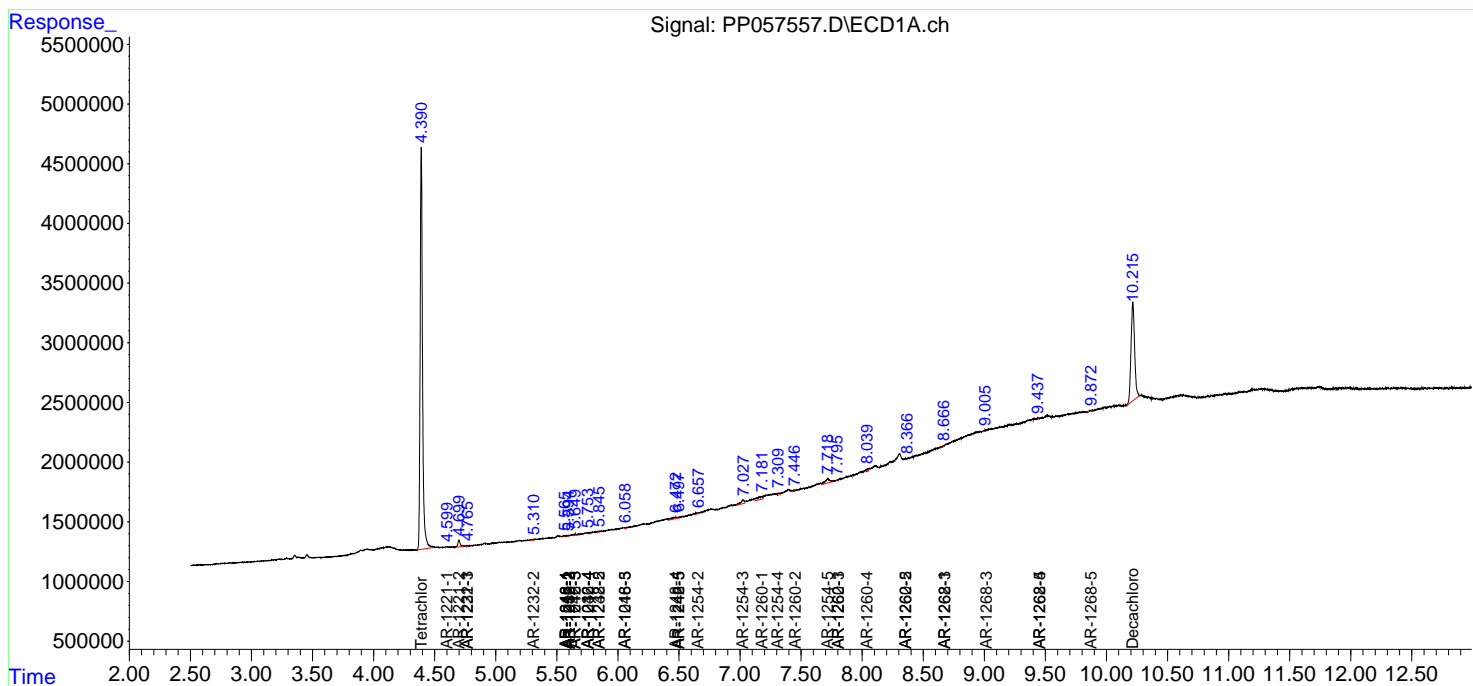
(f)=RT Delta > 1/2 Window (#)=Amounts differ by > 25% (m)=manual int.

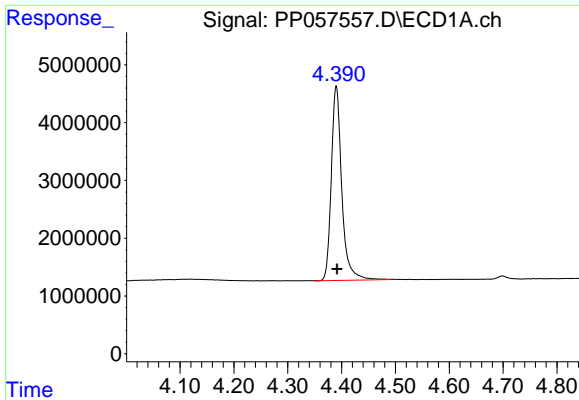
Data Path : Z:\pestpcbsrv\HPCHEM1\ECD\_P\Data\PP050523\  
 Data File : PP057557.D  
 Signal(s) : Signal #1: ECD1A.ch Signal #2: ECD2B.ch  
 Acq On : 05 May 2023 13:00  
 Operator : YP\AJ  
 Sample : PB152597BL  
 Misc :  
 ALS Vial : 12 Sample Multiplier: 1

Instrument :  
 ECD\_P  
 ClientSampleId :

Integration File signal 1: autoint1.e  
 Integration File signal 2: autoint2.e  
 Quant Time: May 05 21:21:02 2023  
 Quant Method : Z:\pestpcbsrv\HPCHEM1\ECD\_P\methods\PP050323.M  
 Quant Title : GC EXTRACTABLES  
 QLast Update : Fri May 05 08:53:51 2023  
 Response via : Initial Calibration  
 Integrator: ChemStation

Volume Inj. : 2 µl  
 Signal #1 Phase : ZB-MR1 Signal #2 Phase: ZB-MR2  
 Signal #1 Info : 30Mx0.32mmx 0.50µ Signal #2 Info : 30M x 0.32mm x 0.25µm

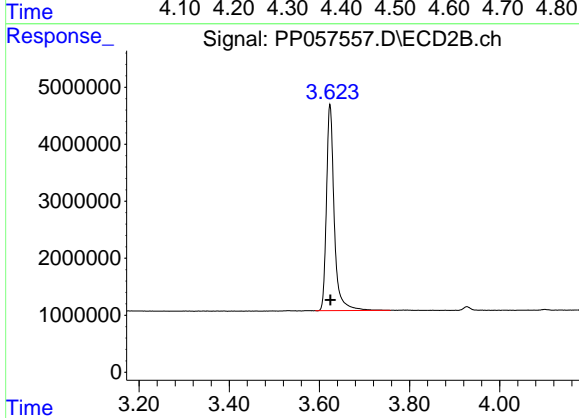




#1 Tetrachloro-m-xylene

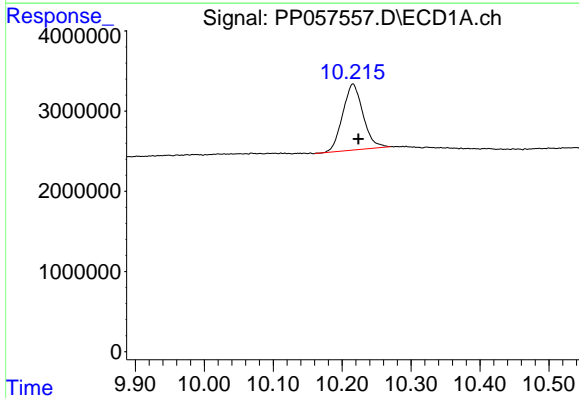
R.T.: 4.390 min  
 Delta R.T.: -0.002 min  
 Response: 45524894  
 Conc: 21.89 ng/ml

Instrument :  
 ECD\_P  
 ClientSampleId :



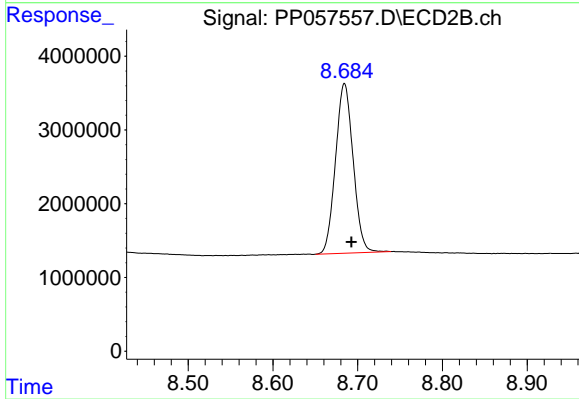
#1 Tetrachloro-m-xylene

R.T.: 3.624 min  
 Delta R.T.: -0.001 min  
 Response: 43349872  
 Conc: 21.40 ng/ml



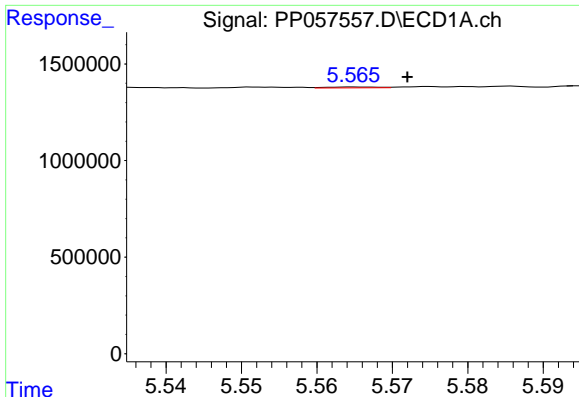
#2 Decachlorobiphenyl

R.T.: 10.216 min  
 Delta R.T.: -0.008 min  
 Response: 16913127  
 Conc: 23.14 ng/ml



#2 Decachlorobiphenyl

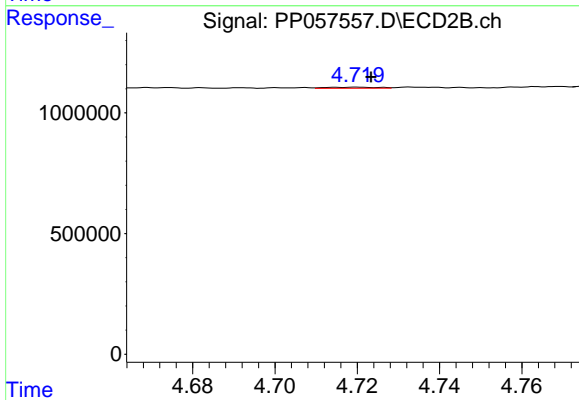
R.T.: 8.684 min  
 Delta R.T.: -0.008 min  
 Response: 33298111  
 Conc: 25.60 ng/ml



#3 AR-1016-1

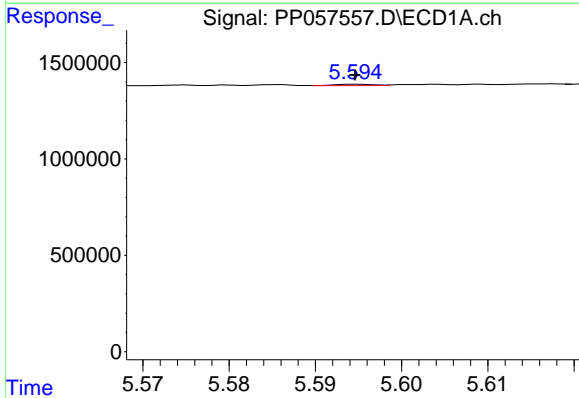
R.T.: 5.565 min  
 Delta R.T.: -0.007 min  
 Response: 21066  
 Conc: 0.39 ng/ml

Instrument :  
 ECD\_P  
 ClientSampleId :



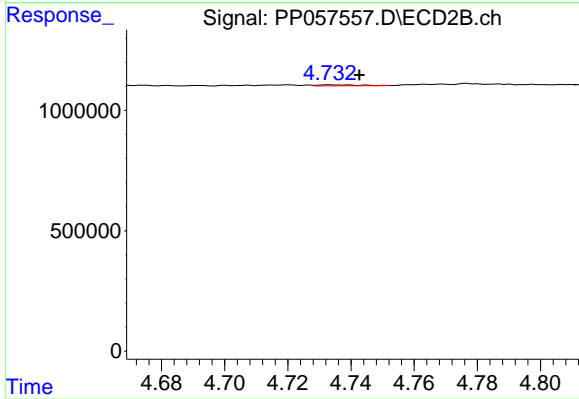
#3 AR-1016-1

R.T.: 4.720 min  
 Delta R.T.: -0.003 min  
 Response: 38558  
 Conc: 0.60 ng/ml



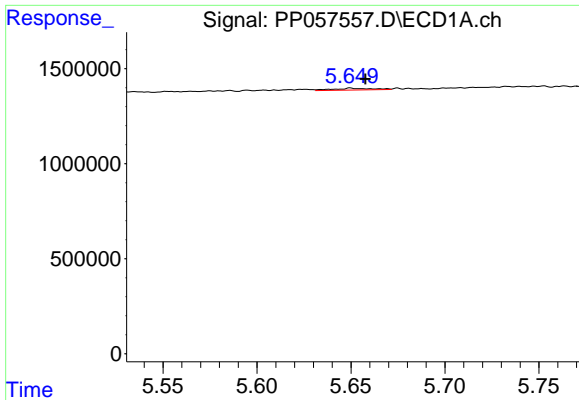
#4 AR-1016-2

R.T.: 5.595 min  
 Delta R.T.: 0.000 min  
 Response: 22733  
 Conc: 0.28 ng/ml



#4 AR-1016-2

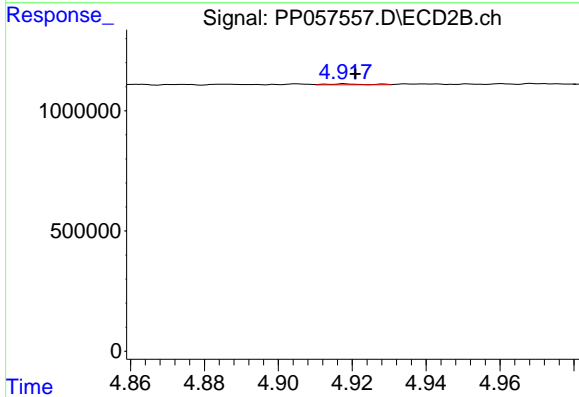
R.T.: 4.733 min  
 Delta R.T.: -0.009 min  
 Response: 39106  
 Conc: 0.44 ng/ml



#5 AR-1016-3

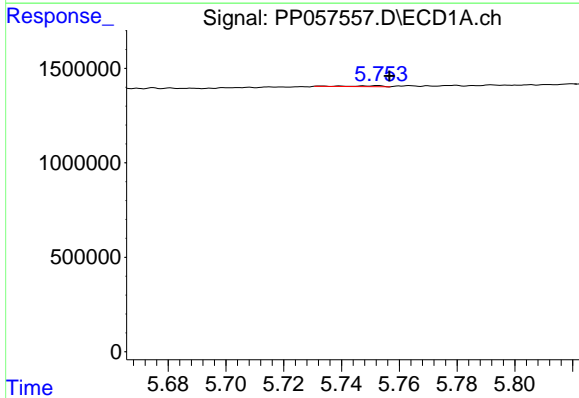
R.T.: 5.650 min  
 Delta R.T.: -0.008 min  
 Response: 137022  
 Conc: 2.74 ng/ml

Instrument :  
 ECD\_P  
 ClientSampleId :



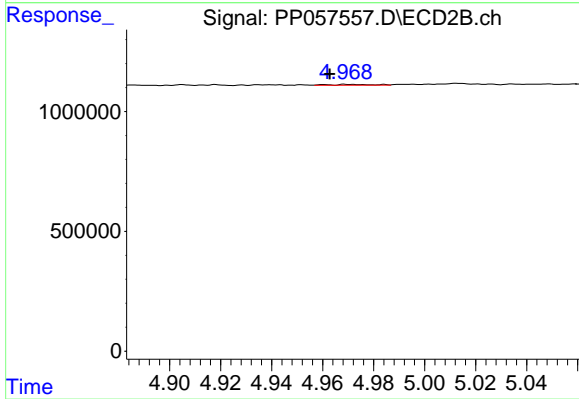
#5 AR-1016-3

R.T.: 4.918 min  
 Delta R.T.: -0.003 min  
 Response: 28650  
 Conc: 0.57 ng/ml



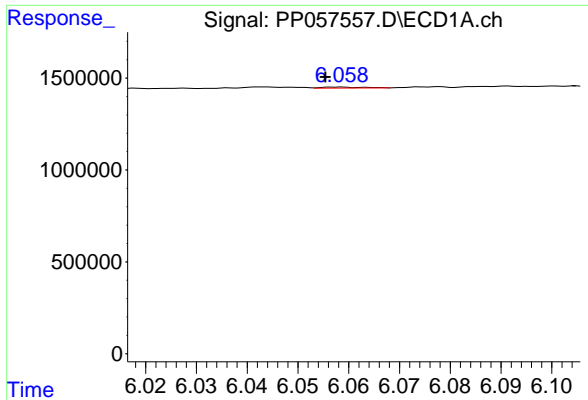
#6 AR-1016-4

R.T.: 5.753 min  
 Delta R.T.: -0.004 min  
 Response: 33246  
 Conc: 0.82 ng/ml



#6 AR-1016-4

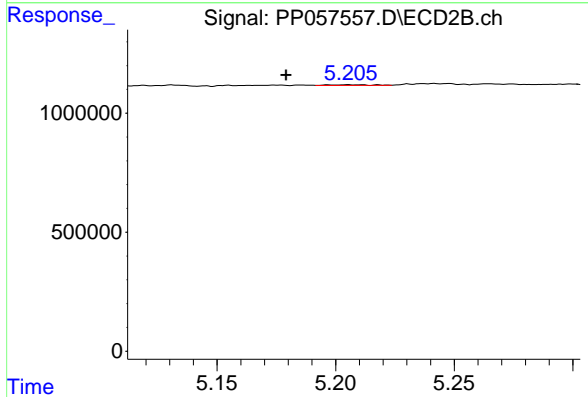
R.T.: 4.961 min  
 Delta R.T.: -0.002 min  
 Response: 44181  
 Conc: 1.10 ng/ml



#7 AR-1016-5

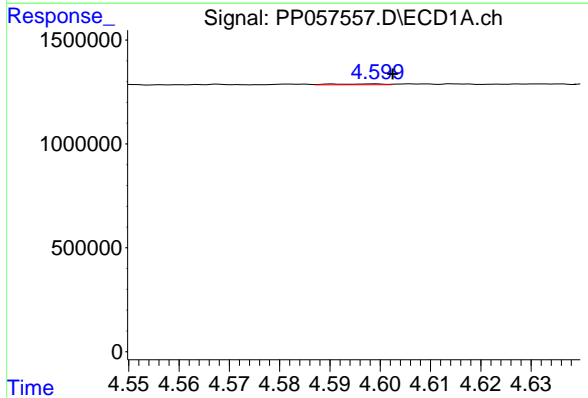
R.T.: 6.058 min  
 Delta R.T.: 0.003 min  
 Response: 30040  
 Conc: 0.74 ng/ml

Instrument :  
 ECD\_P  
 ClientSampleId :



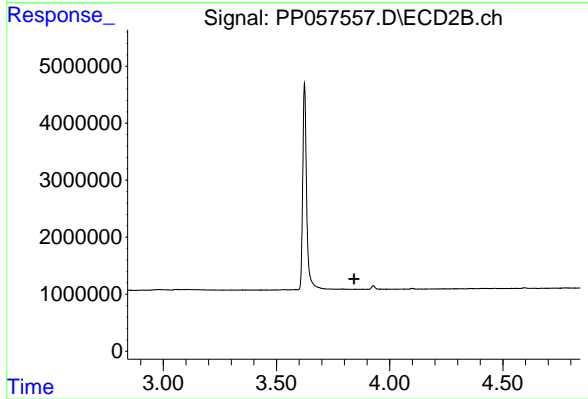
#7 AR-1016-5

R.T.: 5.205 min  
 Delta R.T.: 0.026 min  
 Response: 32355  
 Conc: 0.63 ng/ml



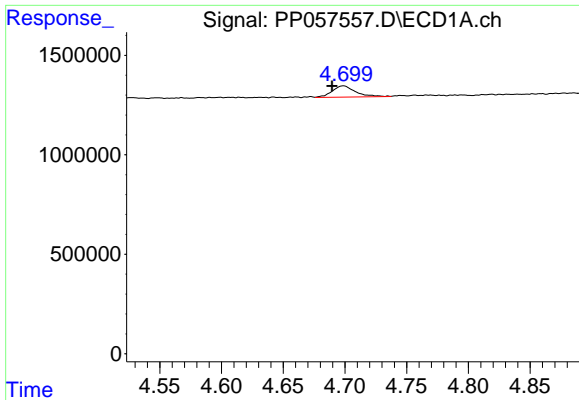
#8 AR-1221-1

R.T.: 4.598 min  
 Delta R.T.: -0.004 min  
 Response: 28512  
 Conc: 1.14 ng/ml



#8 AR-1221-1

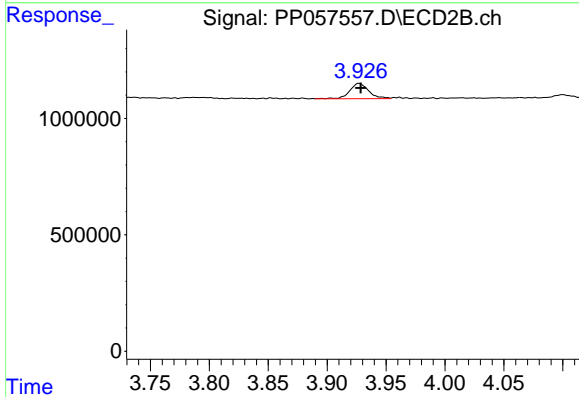
R.T.: 0.000 min  
 Exp R.T.: 3.842 min  
 Response: 0  
 Conc: N.D.



#9 AR-1221-2

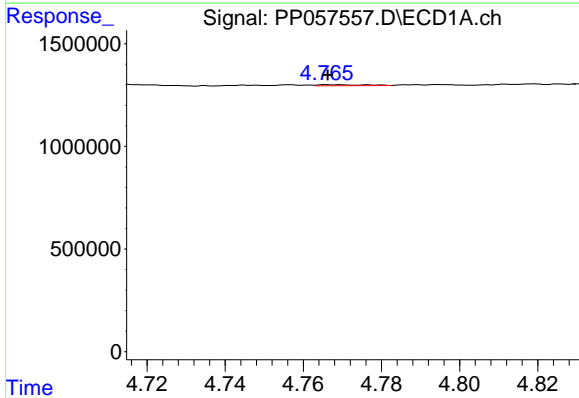
R.T.: 4.699 min  
 Delta R.T.: 0.009 min  
 Response: 745375  
 Conc: 40.33 ng/ml

Instrument :  
 ECD\_P  
 ClientSampleId :



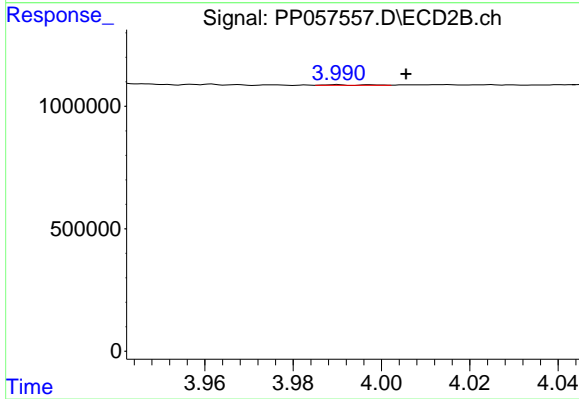
#9 AR-1221-2

R.T.: 3.927 min  
 Delta R.T.: -0.001 min  
 Response: 732451  
 Conc: 39.19 ng/ml



#10 AR-1221-3

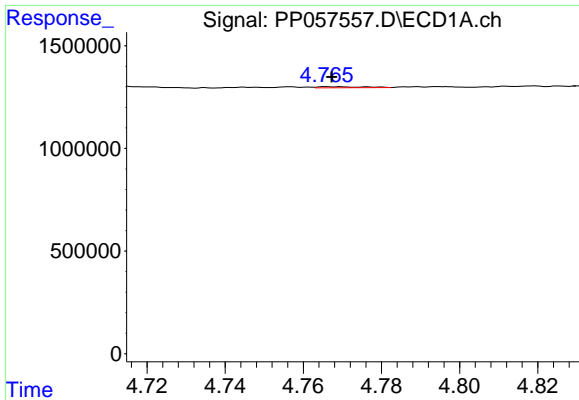
R.T.: 4.767 min  
 Delta R.T.: 0.000 min  
 Response: 40459  
 Conc: 0.74 ng/ml



#10 AR-1221-3

R.T.: 3.990 min  
 Delta R.T.: -0.016 min  
 Response: 12681  
 Conc: 0.23 ng/ml

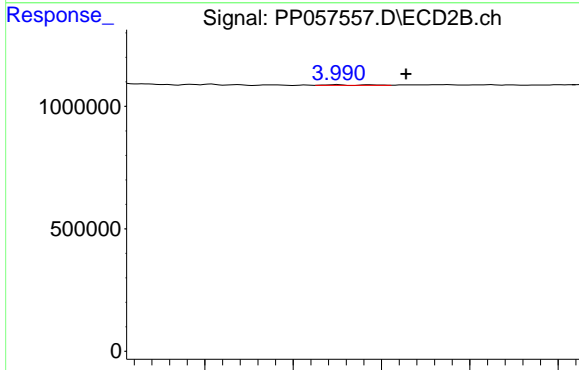




#11 AR-1232-1

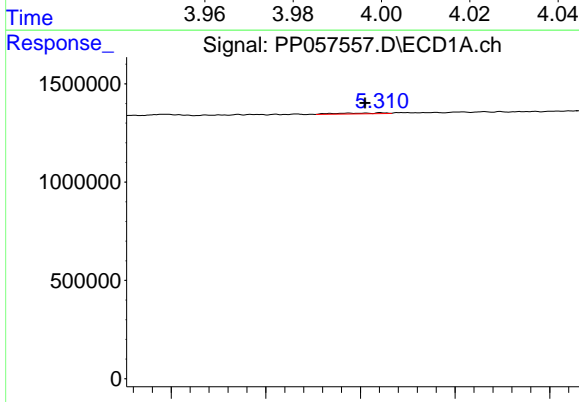
R.T.: 4.767 min  
 Delta R.T.: 0.000 min  
 Response: 40459  
 Conc: 1.00 ng/ml

Instrument :  
 ECD\_P  
 ClientSampleId :



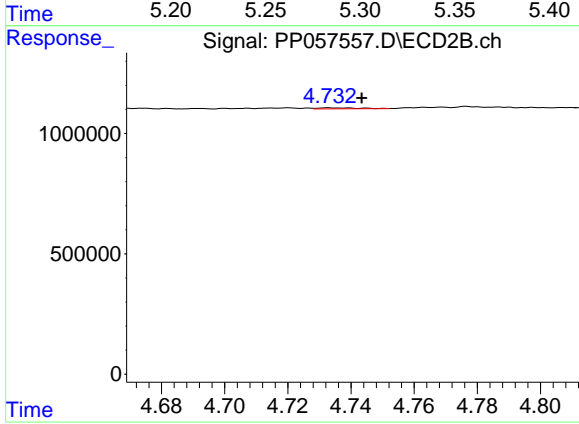
#11 AR-1232-1

R.T.: 3.990 min  
 Delta R.T.: -0.016 min  
 Response: 12681  
 Conc: 0.31 ng/ml



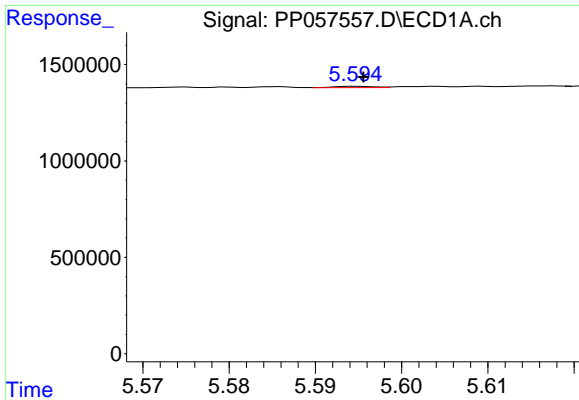
#12 AR-1232-2

R.T.: 5.311 min  
 Delta R.T.: 0.008 min  
 Response: 83785  
 Conc: 3.58 ng/ml



#12 AR-1232-2

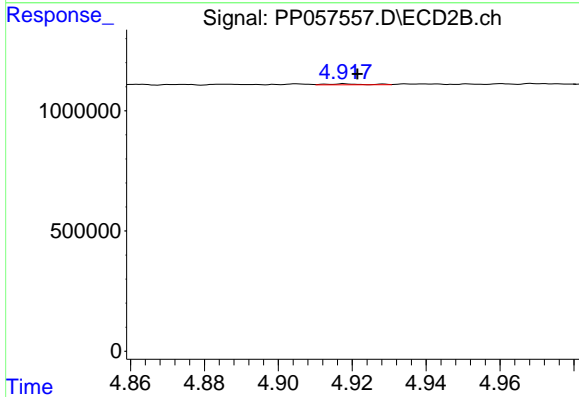
R.T.: 4.733 min  
 Delta R.T.: -0.010 min  
 Response: 39106  
 Conc: 0.94 ng/ml



#13 AR-1232-3

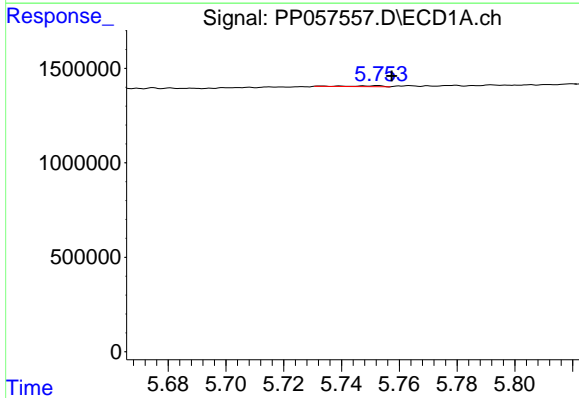
R.T.: 5.595 min  
Delta R.T.: 0.000 min  
Response: 22733  
Conc: 0.62 ng/ml

Instrument :  
ECD\_P  
ClientSampleId :



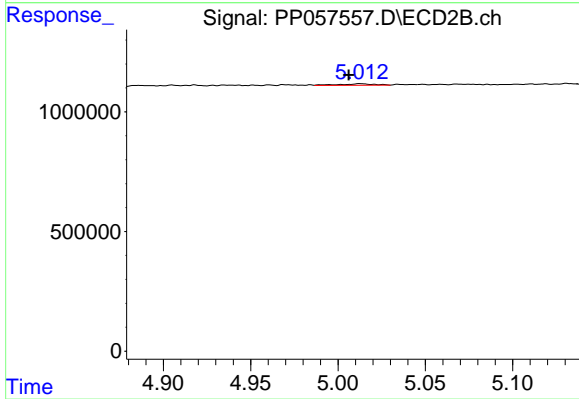
#13 AR-1232-3

R.T.: 4.918 min  
Delta R.T.: -0.003 min  
Response: 28650  
Conc: 1.20 ng/ml



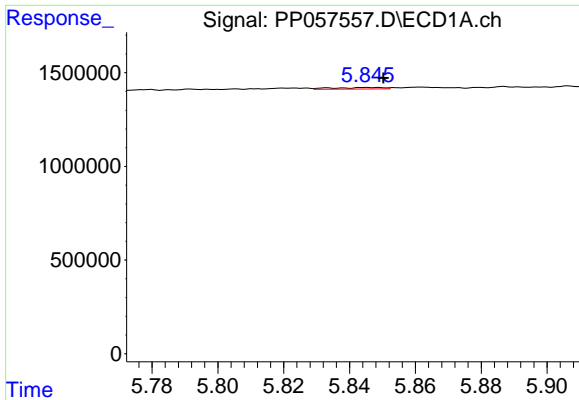
#14 AR-1232-4

R.T.: 5.753 min  
Delta R.T.: -0.005 min  
Response: 33246  
Conc: 1.83 ng/ml



#14 AR-1232-4

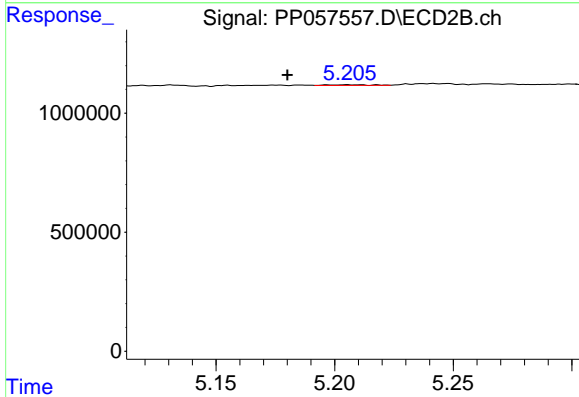
R.T.: 5.013 min  
Delta R.T.: 0.007 min  
Response: 97700  
Conc: 4.60 ng/ml



#15 AR-1232-5

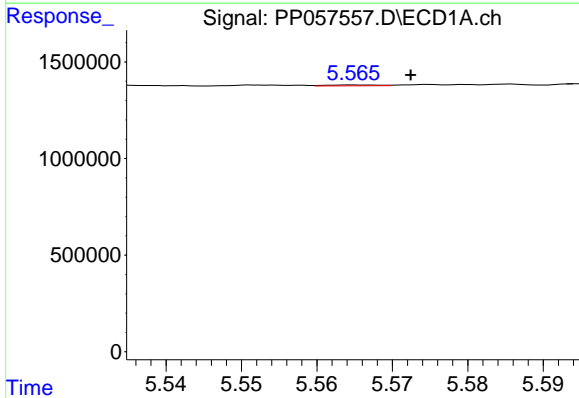
R.T.: 5.845 min  
 Delta R.T.: -0.005 min  
 Response: 88692  
 Conc: 5.73 ng/ml

Instrument :  
 ECD\_P  
 ClientSampleId :



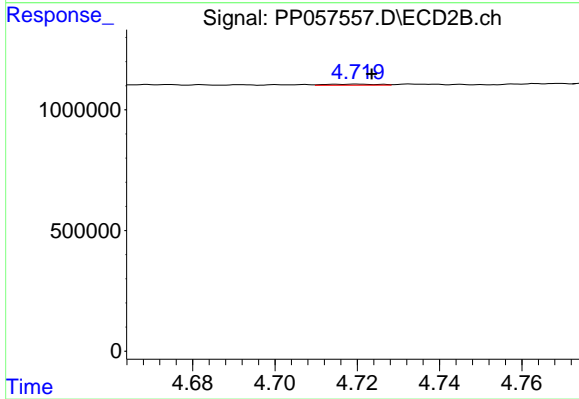
#15 AR-1232-5

R.T.: 5.205 min  
 Delta R.T.: 0.025 min  
 Response: 32355  
 Conc: 1.36 ng/ml



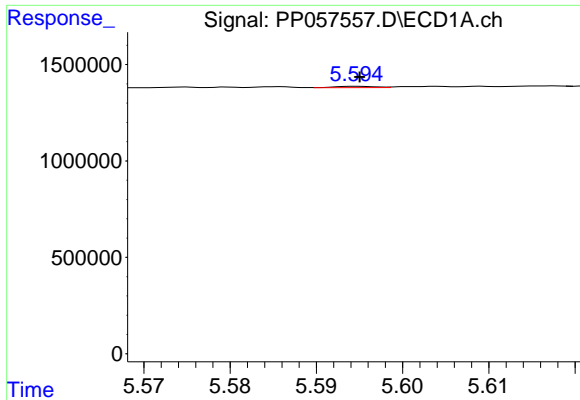
#16 AR-1242-1

R.T.: 5.565 min  
 Delta R.T.: -0.007 min  
 Response: 21066  
 Conc: 0.49 ng/ml



#16 AR-1242-1

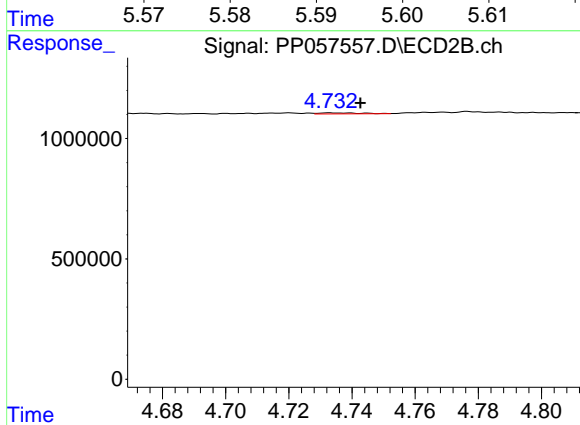
R.T.: 4.720 min  
 Delta R.T.: -0.004 min  
 Response: 38558  
 Conc: 0.76 ng/ml



#17 AR-1242-2

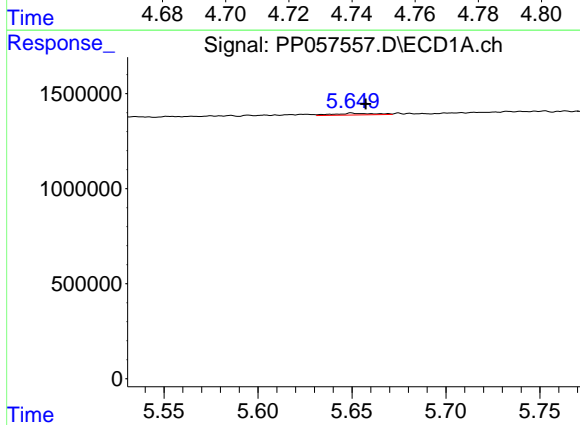
R.T.: 5.595 min  
Delta R.T.: 0.000 min  
Response: 22733  
Conc: 0.36 ng/ml

Instrument :  
ECD\_P  
ClientSampleId :



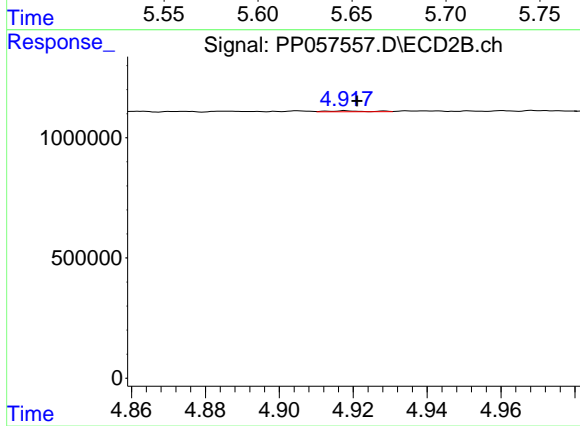
#17 AR-1242-2

R.T.: 4.733 min  
Delta R.T.: -0.009 min  
Response: 39106  
Conc: 0.56 ng/ml



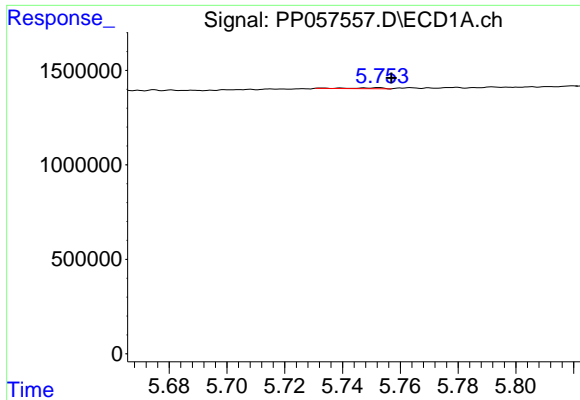
#18 AR-1242-3

R.T.: 5.650 min  
Delta R.T.: -0.008 min  
Response: 137022  
Conc: 3.49 ng/ml



#18 AR-1242-3

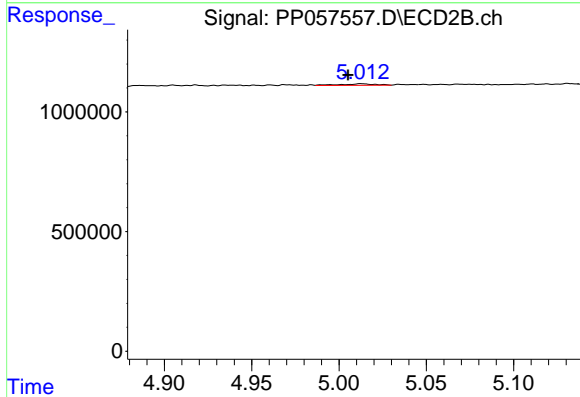
R.T.: 4.918 min  
Delta R.T.: -0.003 min  
Response: 28650  
Conc: 0.71 ng/ml



#19 AR-1242-4

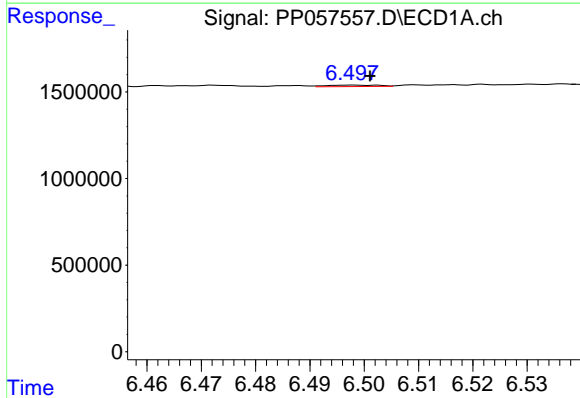
R.T.: 5.753 min  
 Delta R.T.: -0.004 min  
 Response: 33246  
 Conc: 1.04 ng/ml

Instrument :  
 ECD\_P  
 ClientSampleId :



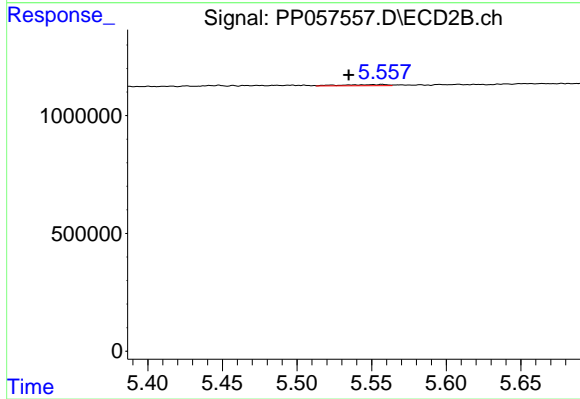
#19 AR-1242-4

R.T.: 5.013 min  
 Delta R.T.: 0.008 min  
 Response: 97700  
 Conc: 2.43 ng/ml



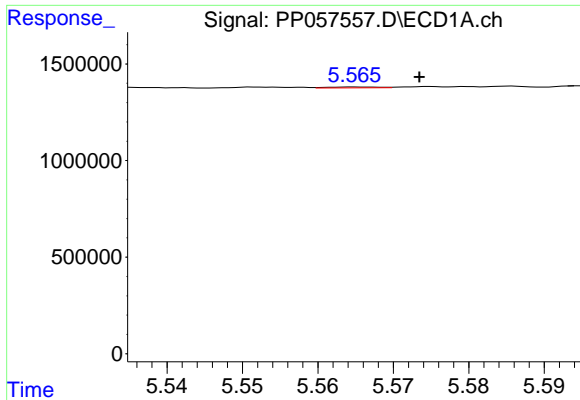
#20 AR-1242-5

R.T.: 6.498 min  
 Delta R.T.: -0.003 min  
 Response: 54701  
 Conc: 1.97 ng/ml



#20 AR-1242-5

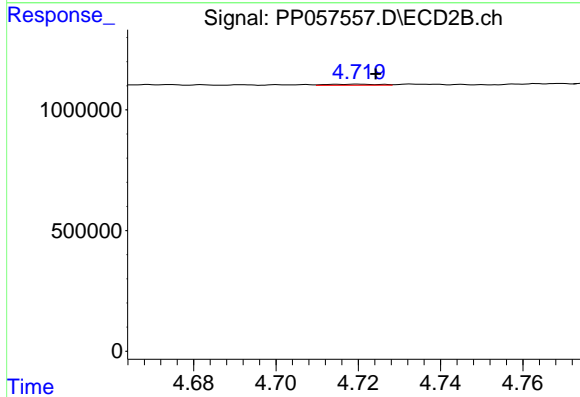
R.T.: 5.557 min  
 Delta R.T.: 0.023 min  
 Response: 101550  
 Conc: 2.07 ng/ml



#21 AR-1248-1

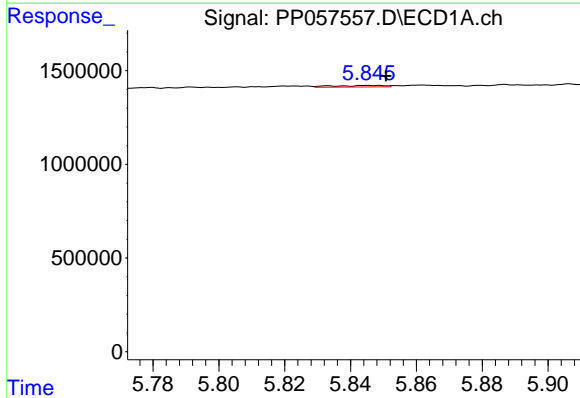
R.T.: 5.565 min  
 Delta R.T.: -0.008 min  
 Response: 21066  
 Conc: 0.55 ng/ml

Instrument :  
 ECD\_P  
 ClientSampleId :



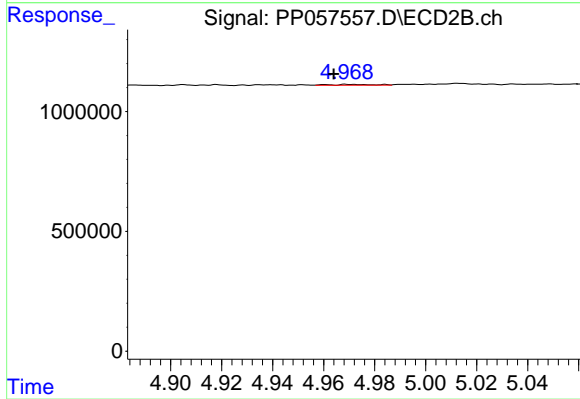
#21 AR-1248-1

R.T.: 4.720 min  
 Delta R.T.: -0.004 min  
 Response: 38558  
 Conc: 0.84 ng/ml



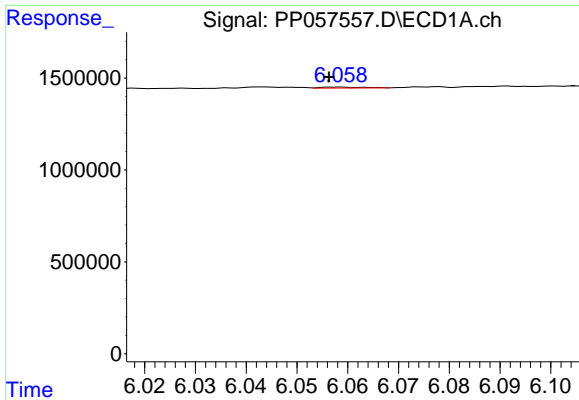
#22 AR-1248-2

R.T.: 5.845 min  
 Delta R.T.: -0.006 min  
 Response: 88692  
 Conc: 1.51 ng/ml



#22 AR-1248-2

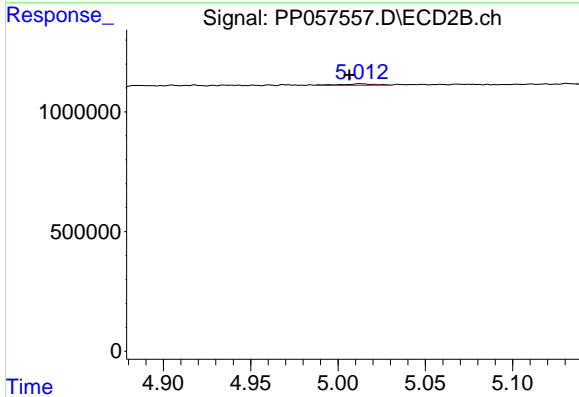
R.T.: 4.961 min  
 Delta R.T.: -0.003 min  
 Response: 44181  
 Conc: 0.69 ng/ml



#23 AR-1248-3

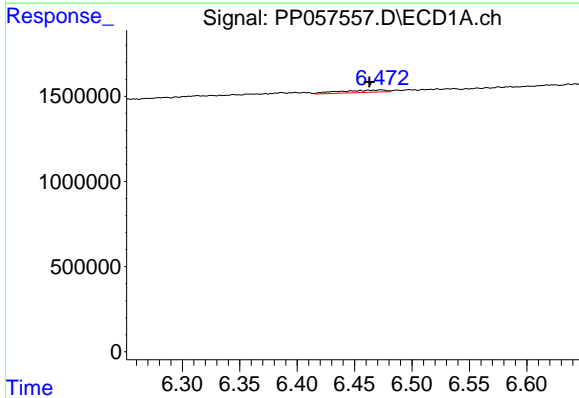
R.T.: 6.058 min  
 Delta R.T.: 0.002 min  
 Response: 30040  
 Conc: 0.48 ng/ml

Instrument :  
 ECD\_P  
 ClientSampleId :



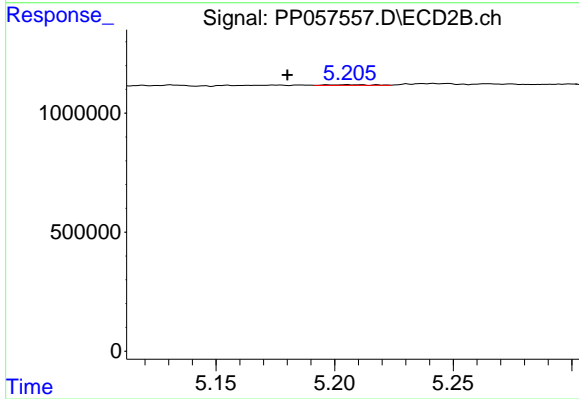
#23 AR-1248-3

R.T.: 5.013 min  
 Delta R.T.: 0.007 min  
 Response: 97700  
 Conc: 1.45 ng/ml



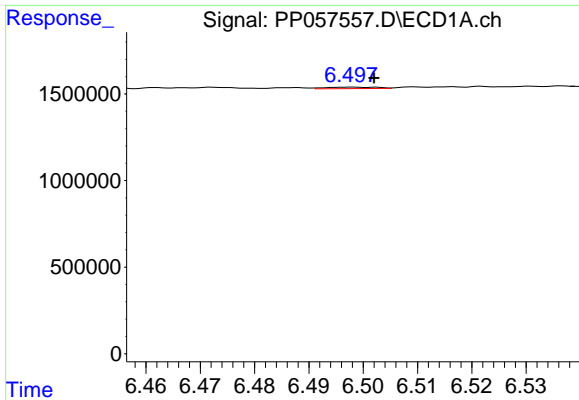
#24 AR-1248-4

R.T.: 6.473 min  
 Delta R.T.: 0.010 min  
 Response: 386531  
 Conc: 6.89 ng/ml



#24 AR-1248-4

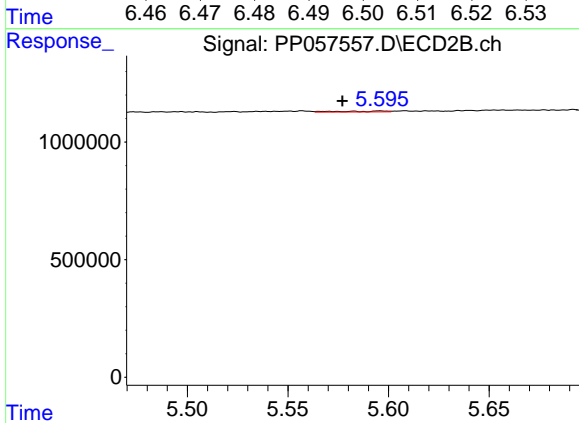
R.T.: 5.205 min  
 Delta R.T.: 0.025 min  
 Response: 32355  
 Conc: 0.41 ng/ml



#25 AR-1248-5

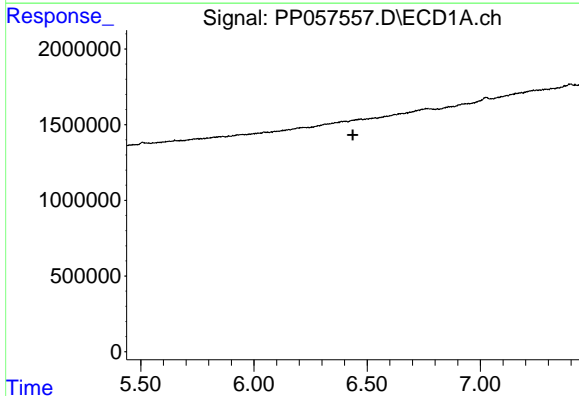
R.T.: 6.498 min  
 Delta R.T.: -0.004 min  
 Response: 54701  
 Conc: 0.98 ng/ml

Instrument :  
 ECD\_P  
 ClientSampleId :



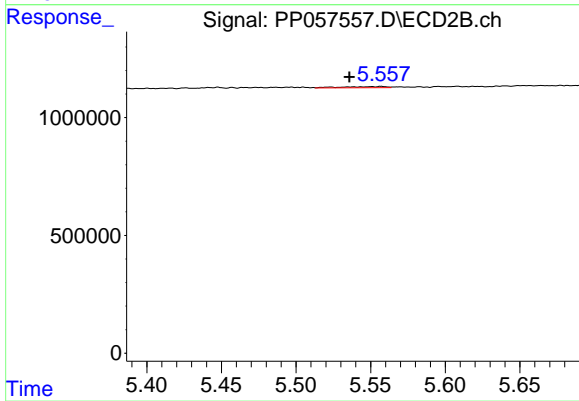
#25 AR-1248-5

R.T.: 5.595 min  
 Delta R.T.: 0.018 min  
 Response: 52992  
 Conc: 0.71 ng/ml



#26 AR-1254-1

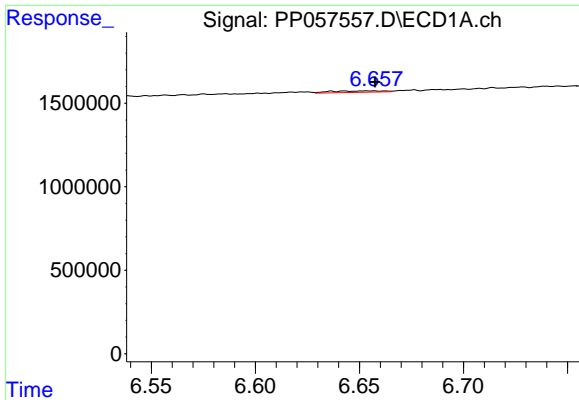
R.T.: 0.000 min  
 Exp R.T. : 6.437 min  
 Response: 0  
 Conc: N.D.



#26 AR-1254-1

R.T.: 5.557 min  
 Delta R.T.: 0.021 min  
 Response: 101550  
 Conc: 1.01 ng/ml

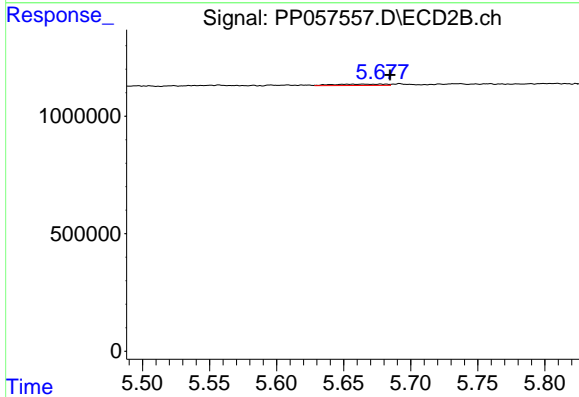




#27 AR-1254-2

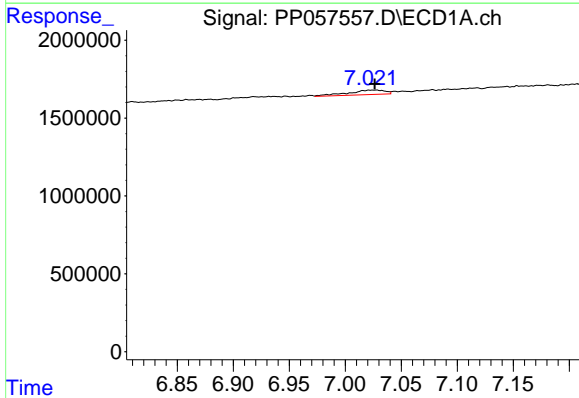
R.T.: 6.656 min  
 Delta R.T.: -0.001 min  
 Response: 155146  
 Conc: 1.82 ng/ml

Instrument :  
 ECD\_P  
 ClientSampleId :



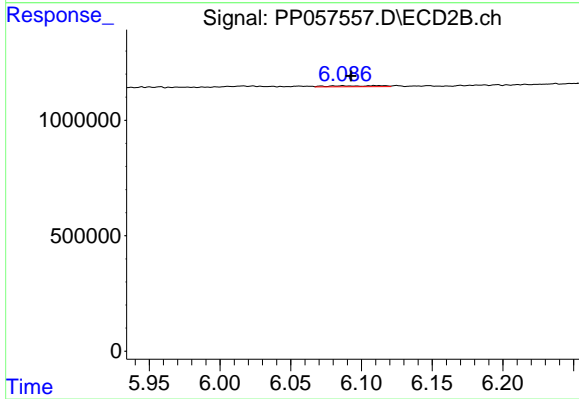
#27 AR-1254-2

R.T.: 5.677 min  
 Delta R.T.: -0.007 min  
 Response: 152741  
 Conc: 1.72 ng/ml



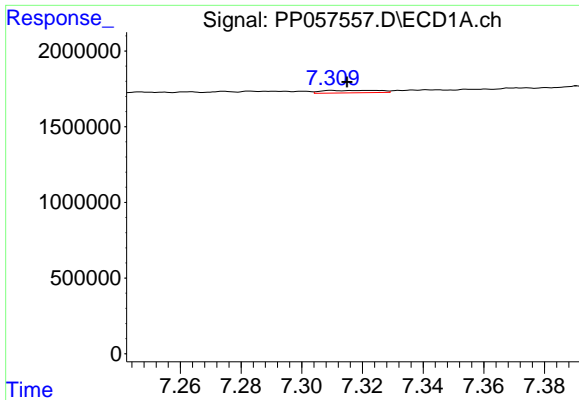
#28 AR-1254-3

R.T.: 7.027 min  
 Delta R.T.: 0.000 min  
 Response: 652254  
 Conc: 8.16 ng/ml



#28 AR-1254-3

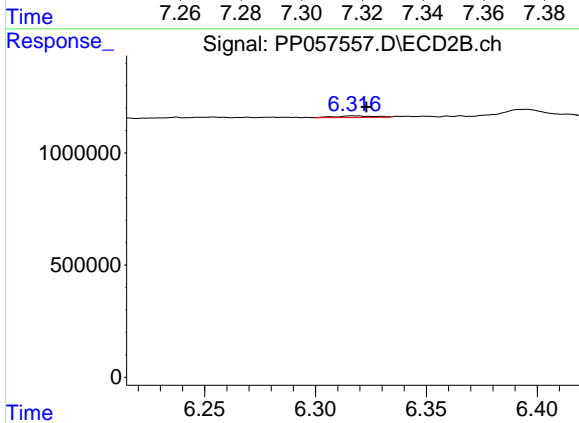
R.T.: 6.087 min  
 Delta R.T.: -0.006 min  
 Response: 109130  
 Conc: 0.78 ng/ml



#29 AR-1254-4

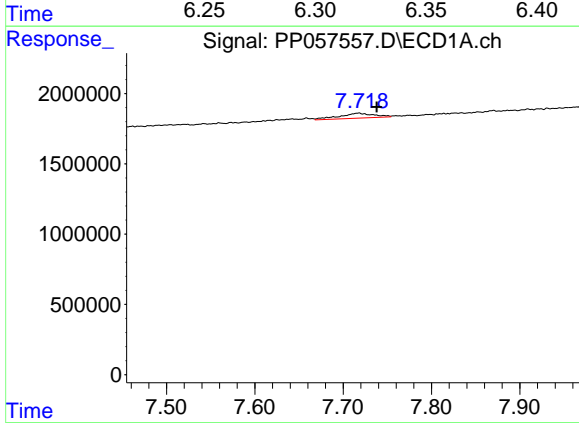
R.T.: 7.310 min  
 Delta R.T.: -0.005 min  
 Response: 212960  
 Conc: 3.81 ng/ml

Instrument :  
 ECD\_P  
 ClientSampleId :



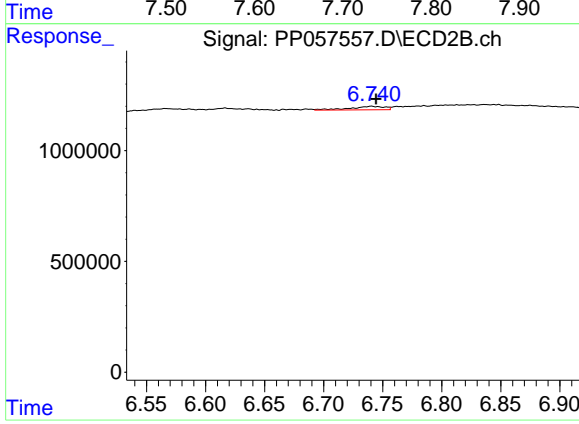
#29 AR-1254-4

R.T.: 6.317 min  
 Delta R.T.: -0.006 min  
 Response: 88054  
 Conc: 1.03 ng/ml



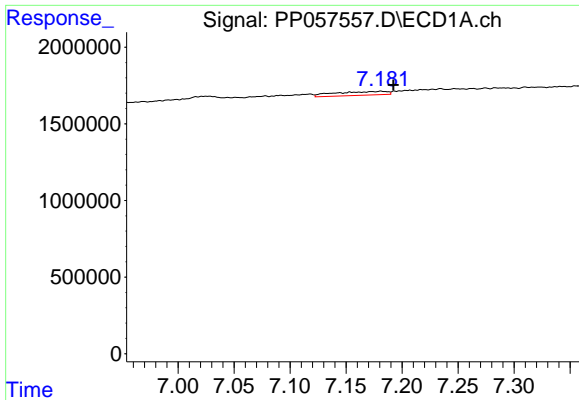
#30 AR-1254-5

R.T.: 7.718 min  
 Delta R.T.: -0.020 min  
 Response: 968554  
 Conc: 15.92 ng/ml



#30 AR-1254-5

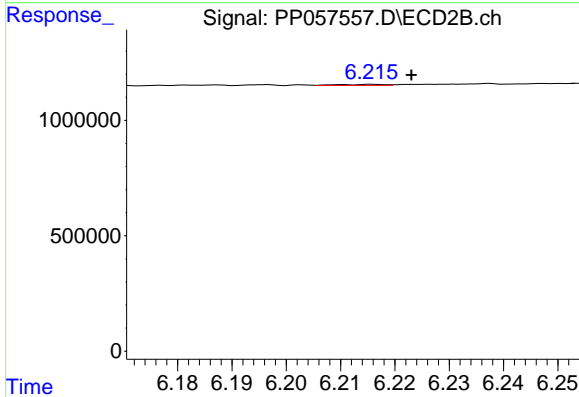
R.T.: 6.740 min  
 Delta R.T.: -0.004 min  
 Response: 322466  
 Conc: 2.47 ng/ml



#31 AR-1260-1

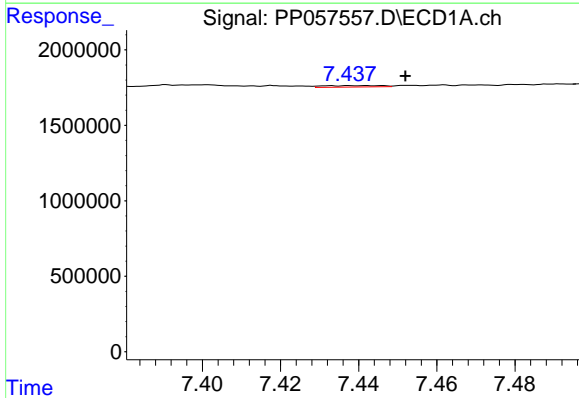
R.T.: 7.181 min  
 Delta R.T.: -0.011 min  
 Response: 798380  
 Conc: 11.19 ng/ml

Instrument :  
 ECD\_P  
 ClientSampleId :



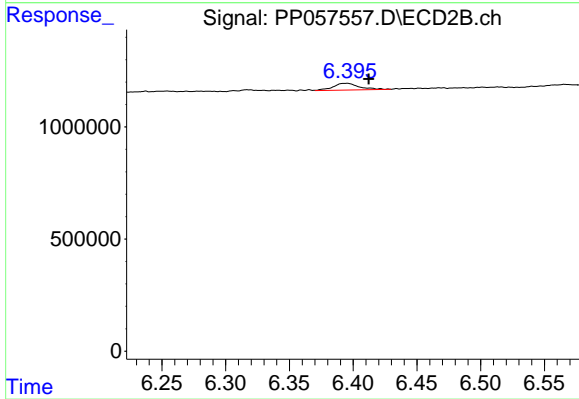
#31 AR-1260-1

R.T.: 6.216 min  
 Delta R.T.: -0.007 min  
 Response: 26541  
 Conc: 0.29 ng/ml



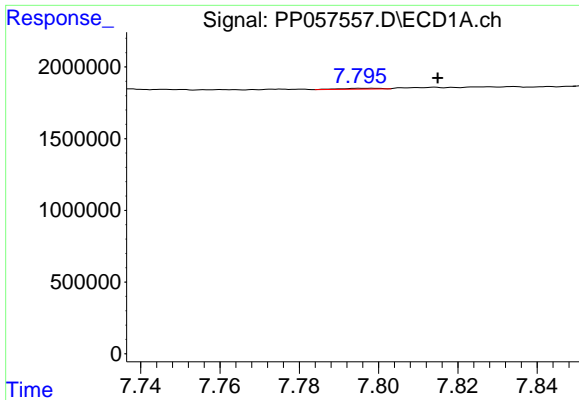
#32 AR-1260-2

R.T.: 7.442 min  
 Delta R.T.: -0.010 min  
 Response: 99781  
 Conc: 1.55 ng/ml



#32 AR-1260-2

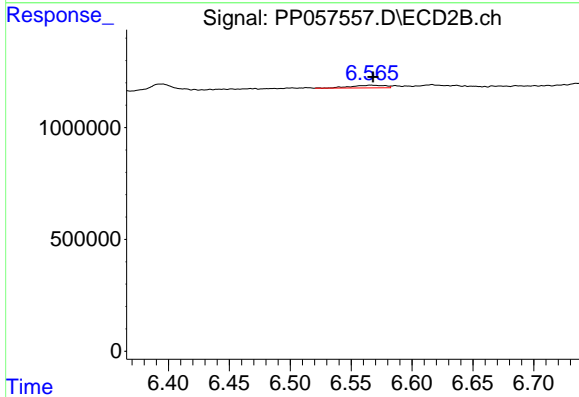
R.T.: 6.394 min  
 Delta R.T.: -0.018 min  
 Response: 425527  
 Conc: 4.00 ng/ml



#33 AR-1260-3

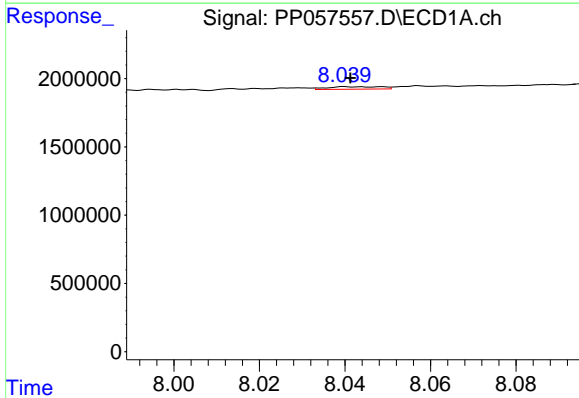
R.T.: 7.798 min  
 Delta R.T.: -0.017 min  
 Response: 37983  
 Conc: 0.92 ng/ml

Instrument :  
 ECD\_P  
 ClientSampleId :



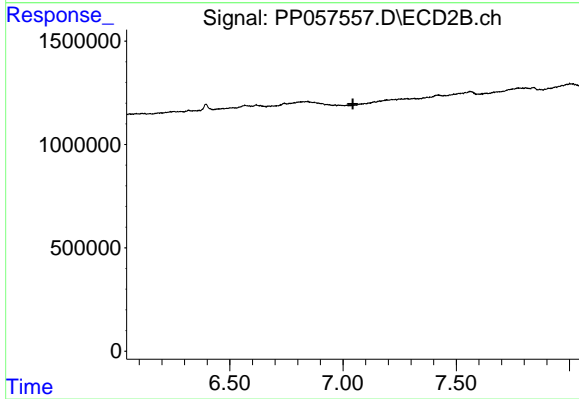
#33 AR-1260-3

R.T.: 6.566 min  
 Delta R.T.: -0.002 min  
 Response: 224423  
 Conc: 2.16 ng/ml



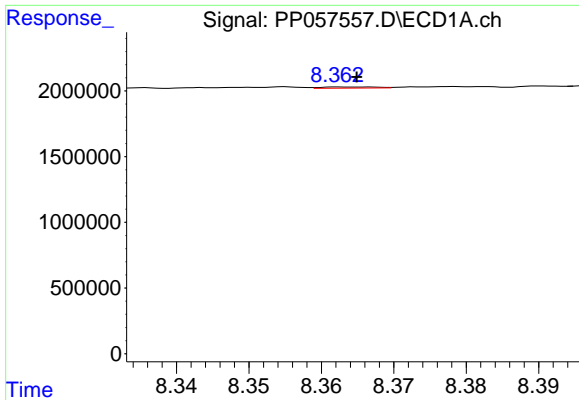
#34 AR-1260-4

R.T.: 8.041 min  
 Delta R.T.: 0.000 min  
 Response: 159723  
 Conc: 3.15 ng/ml



#34 AR-1260-4

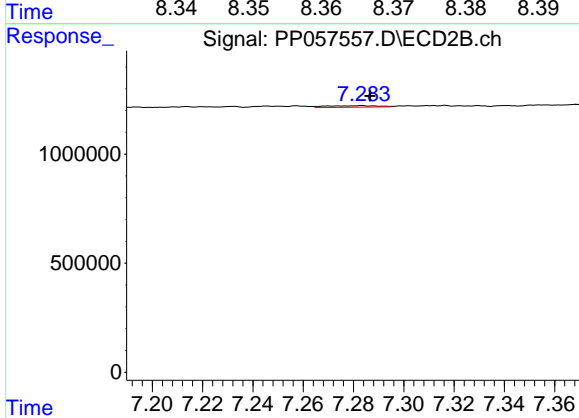
R.T.: 0.000 min  
 Exp R.T. : 7.043 min  
 Response: 0  
 Conc: N.D.



#35 AR-1260-5

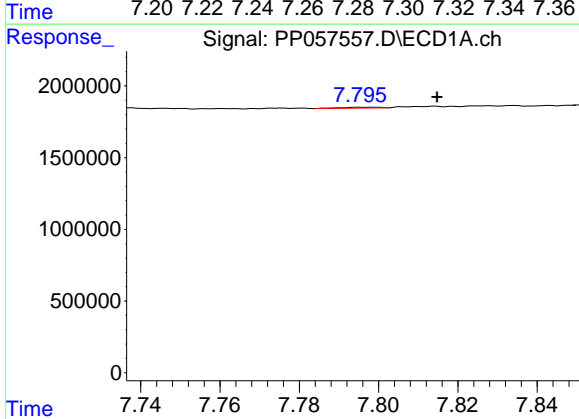
R.T.: 8.365 min  
 Delta R.T.: 0.000 min  
 Response: 47363  
 Conc: 0.57 ng/ml

Instrument :  
 ECD\_P  
 ClientSampleId :



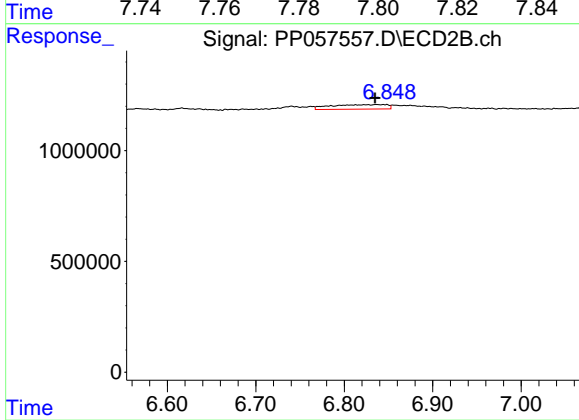
#35 AR-1260-5

R.T.: 7.283 min  
 Delta R.T.: -0.003 min  
 Response: 94349  
 Conc: 0.60 ng/ml



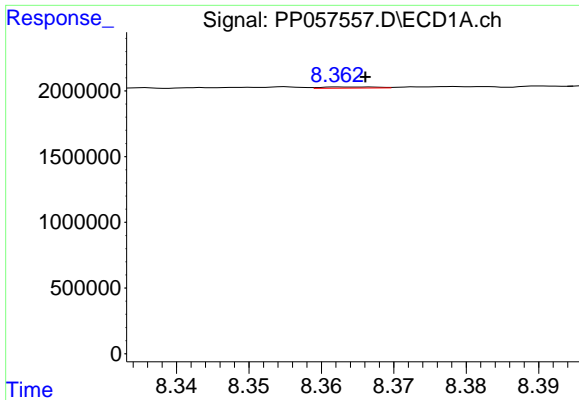
#36 AR-1262-1

R.T.: 7.798 min  
 Delta R.T.: -0.017 min  
 Response: 37983  
 Conc: 0.54 ng/ml



#36 AR-1262-1

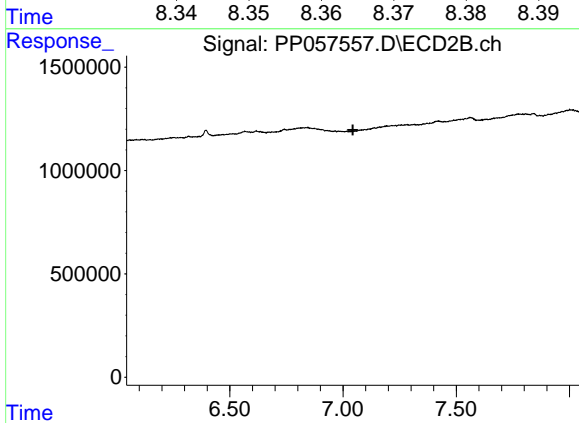
R.T.: 6.848 min  
 Delta R.T.: 0.013 min  
 Response: 902835  
 Conc: 16.50 ng/ml



#37 AR-1262-2

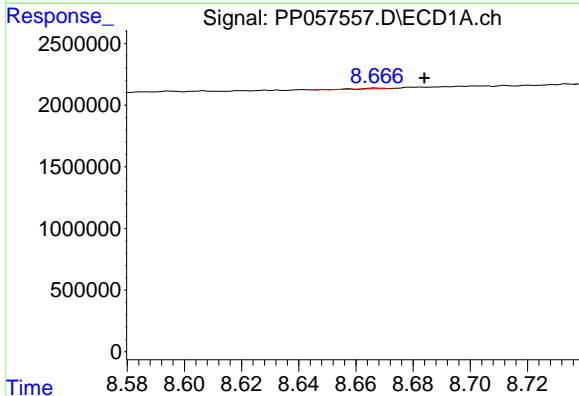
R.T.: 8.365 min  
 Delta R.T.: -0.002 min  
 Response: 47363  
 Conc: 0.45 ng/ml

Instrument :  
 ECD\_P  
 ClientSampleId :



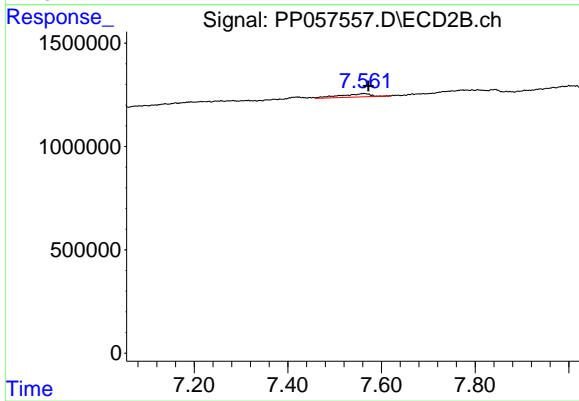
#37 AR-1262-2

R.T.: 0.000 min  
 Exp R.T. : 7.043 min  
 Response: 0  
 Conc: N.D.



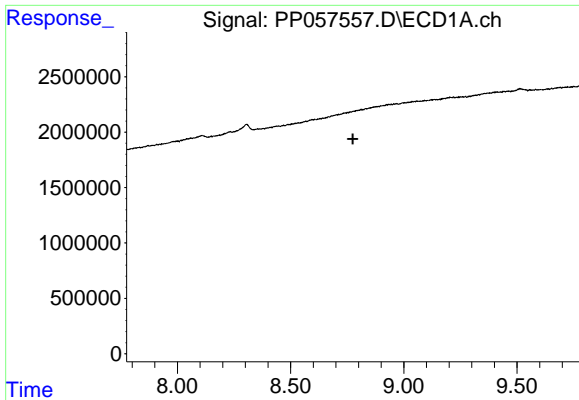
#38 AR-1262-3

R.T.: 8.667 min  
 Delta R.T.: -0.017 min  
 Response: 34036  
 Conc: 0.47 ng/ml



#38 AR-1262-3

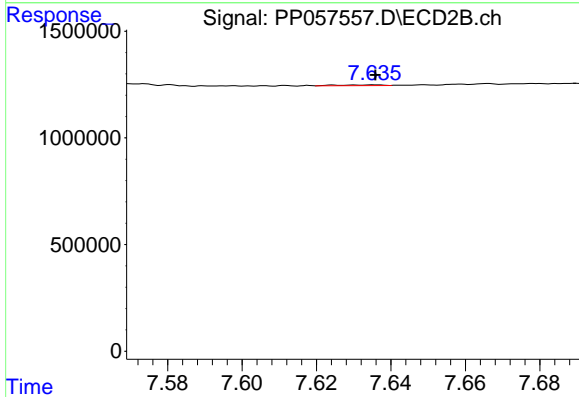
R.T.: 7.562 min  
 Delta R.T.: -0.010 min  
 Response: 733741  
 Conc: 8.76 ng/ml



#39 AR-1262-4

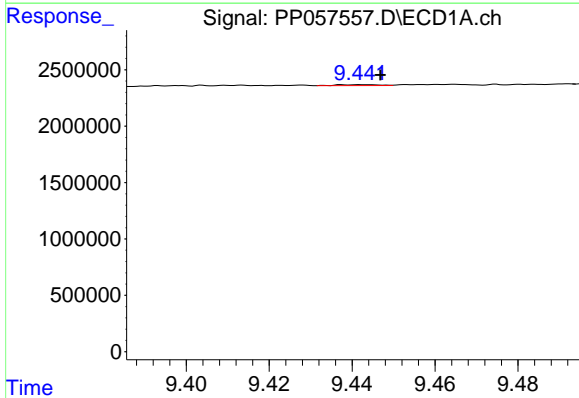
R.T.: 0.000 min  
 Exp R.T.: 8.775 min  
 Response: 0  
 Conc: N.D.

Instrument :  
 ECD\_P  
 ClientSampleId :



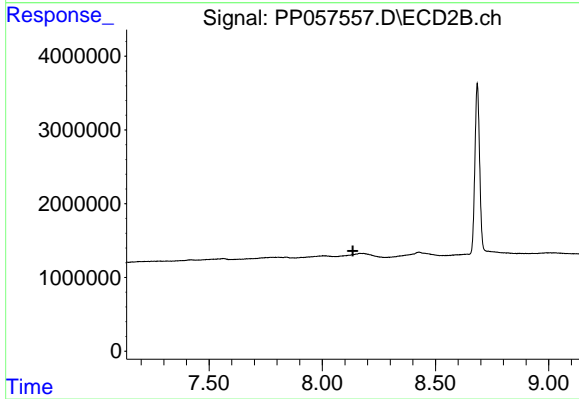
#39 AR-1262-4

R.T.: 7.636 min  
 Delta R.T.: 0.000 min  
 Response: 25255  
 Conc: 0.17 ng/ml



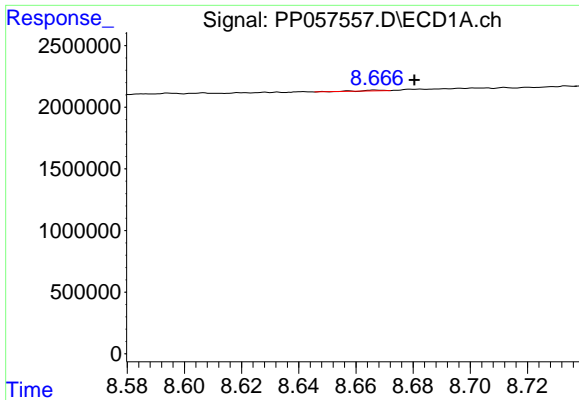
#40 AR-1262-5

R.T.: 9.442 min  
 Delta R.T.: -0.004 min  
 Response: 54173  
 Conc: 1.61 ng/ml



#40 AR-1262-5

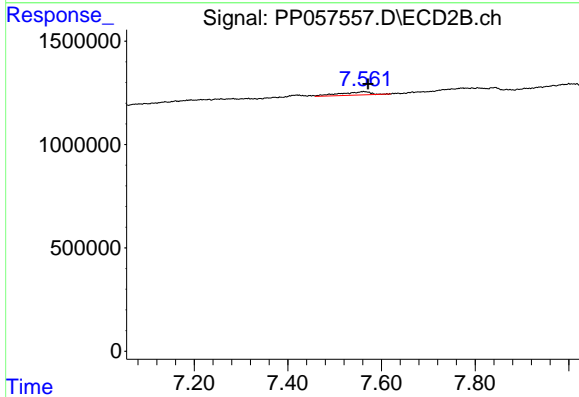
R.T.: 0.000 min  
 Exp R.T.: 8.135 min  
 Response: 0  
 Conc: N.D.



#41 AR-1268-1

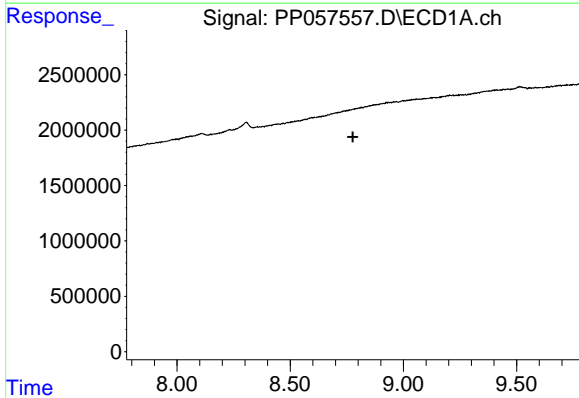
R.T.: 8.667 min  
 Delta R.T.: -0.013 min  
 Response: 34036  
 Conc: 0.27 ng/ml

Instrument :  
 ECD\_P  
 ClientSampleId :



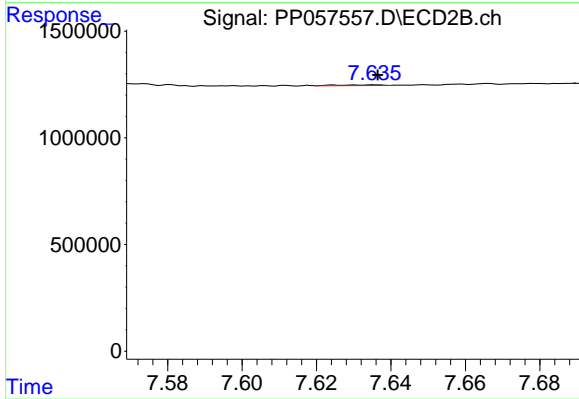
#41 AR-1268-1

R.T.: 7.562 min  
 Delta R.T.: -0.009 min  
 Response: 733741  
 Conc: 2.99 ng/ml



#42 AR-1268-2

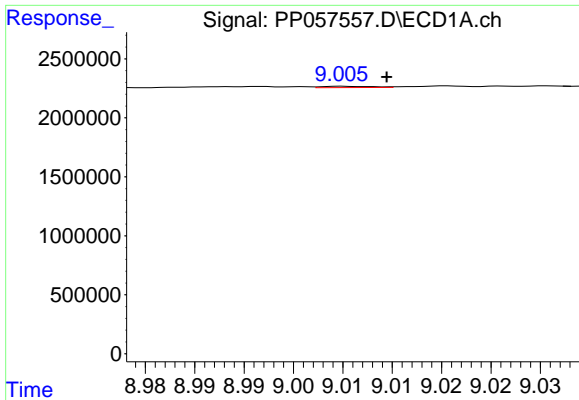
R.T.: 0.000 min  
 Exp R.T. : 8.777 min  
 Response: 0  
 Conc: N.D.



#42 AR-1268-2

R.T.: 7.636 min  
 Delta R.T.: 0.000 min  
 Response: 25255  
 Conc: 0.12 ng/ml

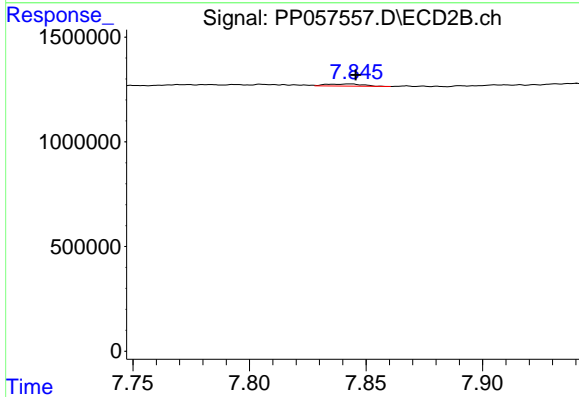




#43 AR-1268-3

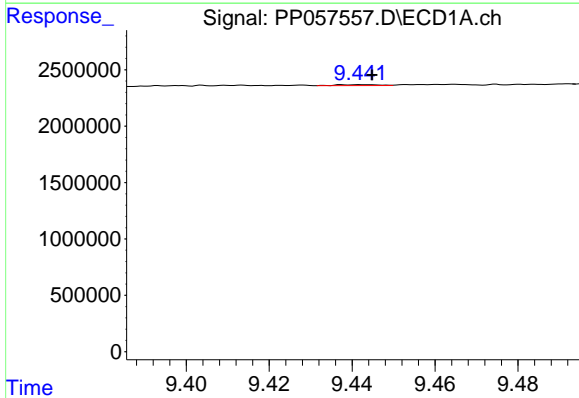
R.T.: 9.005 min  
 Delta R.T.: -0.004 min  
 Response: 38635  
 Conc: 0.39 ng/ml

Instrument :  
 ECD\_P  
 ClientSampleId :



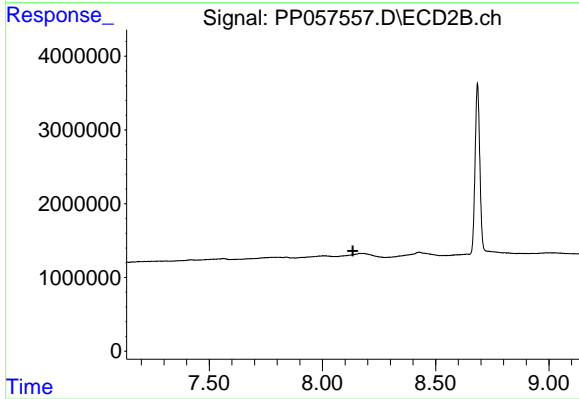
#43 AR-1268-3

R.T.: 7.843 min  
 Delta R.T.: -0.003 min  
 Response: 106031  
 Conc: 0.56 ng/ml



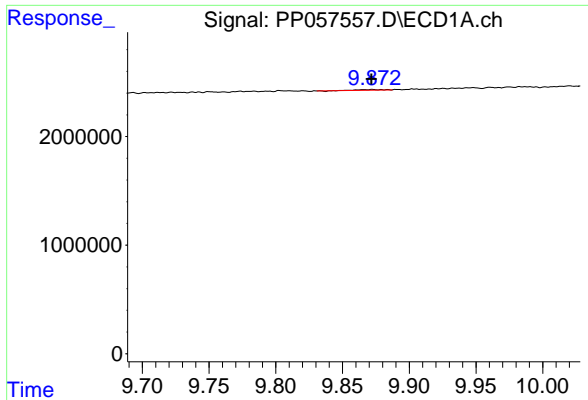
#44 AR-1268-4

R.T.: 9.442 min  
 Delta R.T.: -0.003 min  
 Response: 54173  
 Conc: 1.46 ng/ml



#44 AR-1268-4

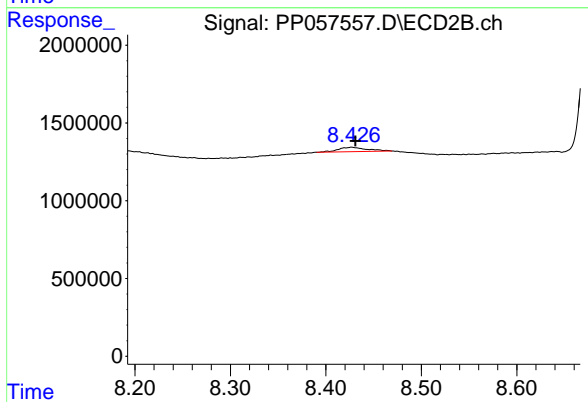
R.T.: 0.000 min  
 Exp R.T. : 8.134 min  
 Response: 0  
 Conc: N.D.



#45 AR-1268-5

R.T.: 9.872 min  
 Delta R.T.: 0.000 min  
 Response: 75720  
 Conc: 0.30 ng/ml

Instrument :  
 ECD\_P  
 ClientSampleId :



#45 AR-1268-5

R.T.: 8.427 min  
 Delta R.T.: -0.004 min  
 Response: 595439  
 Conc: 1.18 ng/ml