

Data Path : Z:\pestpcbsrv\HPCHEM1\ECD_P\Data\PP050525\
 Data File : PP071790.D
 Signal(s) : Signal #1: ECD1A.ch Signal #2: ECD2B.ch
 Acq On : 05 May 2025 19:37
 Operator : YP\AJ
 Sample : Q1952-01
 Misc :
 ALS Vial : 21 Sample Multiplier: 1

Instrument :
 ECD_P
 ClientSampleId :
 CLEAN-FILL

Integration File signal 1: autoint1.e
 Integration File signal 2: autoint2.e
 Quant Time: May 06 02:32:09 2025
 Quant Method : Z:\pestpcbsrv\HPCHEM1\ECD_P\methods\PP042225.M
 Quant Title : GC EXTRACTABLES
 QLast Update : Wed Apr 23 05:02:06 2025
 Response via : Initial Calibration
 Integrator: ChemStation

Volume Inj. : 2 µl
 Signal #1 Phase : ZB-MR1 Signal #2 Phase: ZB-MR2
 Signal #1 Info : 30Mx0.32mmx 0.50µ Signal #2 Info : 30M x 0.32mm x 0.25µm

Compound	RT#1	RT#2	Resp#1	Resp#2	ng/ml	ng/ml
System Monitoring Compounds						
1) SA Tetrachlo...	4.508	3.807	22557119	20222528	11.377	14.356 #
2) SA Decachlor...	10.221	8.835	9716832	7367612	6.710	8.400 #
Target Compounds						
3) L1 AR-1016-1	5.679	4.900	1363233	71448	20.332	1.335 #
4) L1 AR-1016-2	5.700	4.931	2555981	125423	24.905	1.642 #
5) L1 AR-1016-3	5.759	5.088	587849	77402	9.536	1.834 #
6) L1 AR-1016-4	5.845	5.131	1698134	492686	33.103	14.287 #
7) L1 AR-1016-5	6.154	5.364	380464	178566	7.887	4.017 #
8) L2 AR-1221-1	4.711	4.024	2981868	81437	123.642	3.703 #
9) L2 AR-1221-2	4.810	4.091	700373	1230992	38.873	74.328 #
10) L2 AR-1221-3	4.888	4.226f	336887	157482	5.951	3.249 #
11) L3 AR-1232-1	4.888	4.226f	336887	157482	7.501	4.110 #
12) L3 AR-1232-2	5.399	4.931	8038388	125423	349.296	3.284 #
13) L3 AR-1232-3	5.700	5.088	2555981	77402	54.132	3.655 #
14) L3 AR-1232-4	5.845	5.193	1698134	556302	73.261	30.005 #
15) L3 AR-1232-5	5.940	5.364	1033782	178566	64.028	8.972 #
16) L4 AR-1242-1	5.679	4.900	1363233	71448	24.890	1.545 #
17) L4 AR-1242-2	5.700	4.931	2555981	125423	30.077	1.900 #
18) L4 AR-1242-3	5.746	5.088	605222	77402	11.838	2.124 #
19) L4 AR-1242-4	5.845	5.193	1698134	556302	40.232	15.578 #
20) L4 AR-1242-5	6.600	5.704	25218617	2286610	544.790	52.556 #
21) L5 AR-1248-1	5.679	4.900	1363233	71448	31.748	1.979 #
22) L5 AR-1248-2	5.940	5.131	1033782	492686	17.106	10.063 #
23) L5 AR-1248-3	6.154	5.193	380464	556302	5.697	10.890 #
24) L5 AR-1248-4	6.496f	5.364	14160075	178566	167.355	2.944 #
25) L5 AR-1248-5	6.600	5.745	25218617	2059326	317.422	35.328 #
26) L6 AR-1254-1	6.496	5.704	14160075	2286610	172.787	25.018 #
27) L6 AR-1254-2	6.721	5.880	19599597	6102916	154.235	77.535 #
28) L6 AR-1254-3	7.111	6.257	13625128	2096599	106.634	17.692 #
29) L6 AR-1254-4	7.376	6.469	11980246	3435973	101.948	44.527 #
30) L6 AR-1254-5	7.808	6.912	2106657	806491	19.555	7.948 #
31) L7 AR-1260-1	7.256	6.386	25609720	2620280	266.700	36.242 #
32) L7 AR-1260-2	7.512	6.563	14754365	2026926	103.122	23.175 #
33) L7 AR-1260-3	7.827f	6.719	657116	503866	5.862	6.428
34) L7 AR-1260-4	8.096	7.194	2659256	853776	23.561	13.528 #
35) L7 AR-1260-5	8.434	7.431	3111944	1137264	13.735	7.543 #
36) L8 AR-1262-1	8.096	6.956	2659256	509357	18.404	4.483 #
37) L8 AR-1262-2	8.408	7.194	13222162	853776	48.223	9.246 #
38) L8 AR-1262-3	8.740	7.739	5356449	2069665	29.290	27.342
39) L8 AR-1262-4	8.822	7.802	8331218	1663451	62.076	13.326 #
40) L8 AR-1262-5	9.489	8.261	190692	132091	2.163	2.380
41) L9 AR-1268-1	8.740	7.739	5356449	2069665	17.241	10.364 #

Data Path : Z:\pestpcbsrv\HPCHEM1\ECD_P\Data\PP050525\
 Data File : PP071790.D
 Signal(s) : Signal #1: ECD1A.ch Signal #2: ECD2B.ch
 Acq On : 05 May 2025 19:37
 Operator : YP\AJ
 Sample : Q1952-01
 Misc :
 ALS Vial : 21 Sample Multiplier: 1

Instrument :
 ECD_P
 ClientSampleId :
 CLEAN-FILL

Integration File signal 1: autoint1.e
 Integration File signal 2: autoint2.e
 Quant Time: May 06 02:32:09 2025
 Quant Method : Z:\pestpcbsrv\HPCHEM1\ECD_P\methods\PP042225.M
 Quant Title : GC EXTRACTABLES
 QLast Update : Wed Apr 23 05:02:06 2025
 Response via : Initial Calibration
 Integrator: ChemStation

Volume Inj. : 2 µl
 Signal #1 Phase : ZB-MR1 Signal #2 Phase: ZB-MR2
 Signal #1 Info : 30Mx0.32mmx 0.50µ Signal #2 Info : 30M x 0.32mm x 0.25µm

	Compound	RT#1	RT#2	Resp#1	Resp#2	ng/ml	ng/ml
42)	L9 AR-1268-2	8.822	7.802	8331218	1663451	32.323	9.841 #
43)	L9 AR-1268-3	9.041	7.982	1844793	207260	8.276	1.490 #
44)	L9 AR-1268-4	9.489	8.312	190692	55705	2.027	0.916 #
45)	L9 AR-1268-5	9.884	8.572	592567	120587	0.991	0.323 #

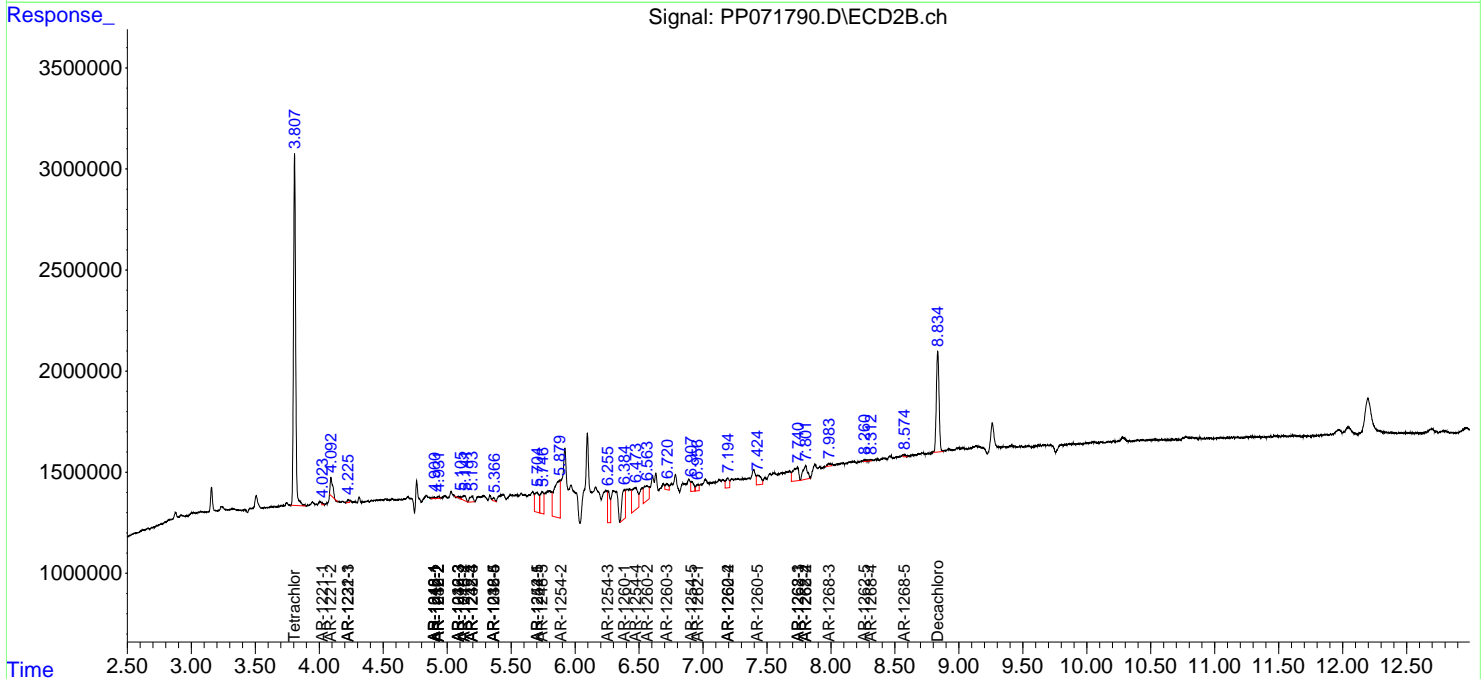
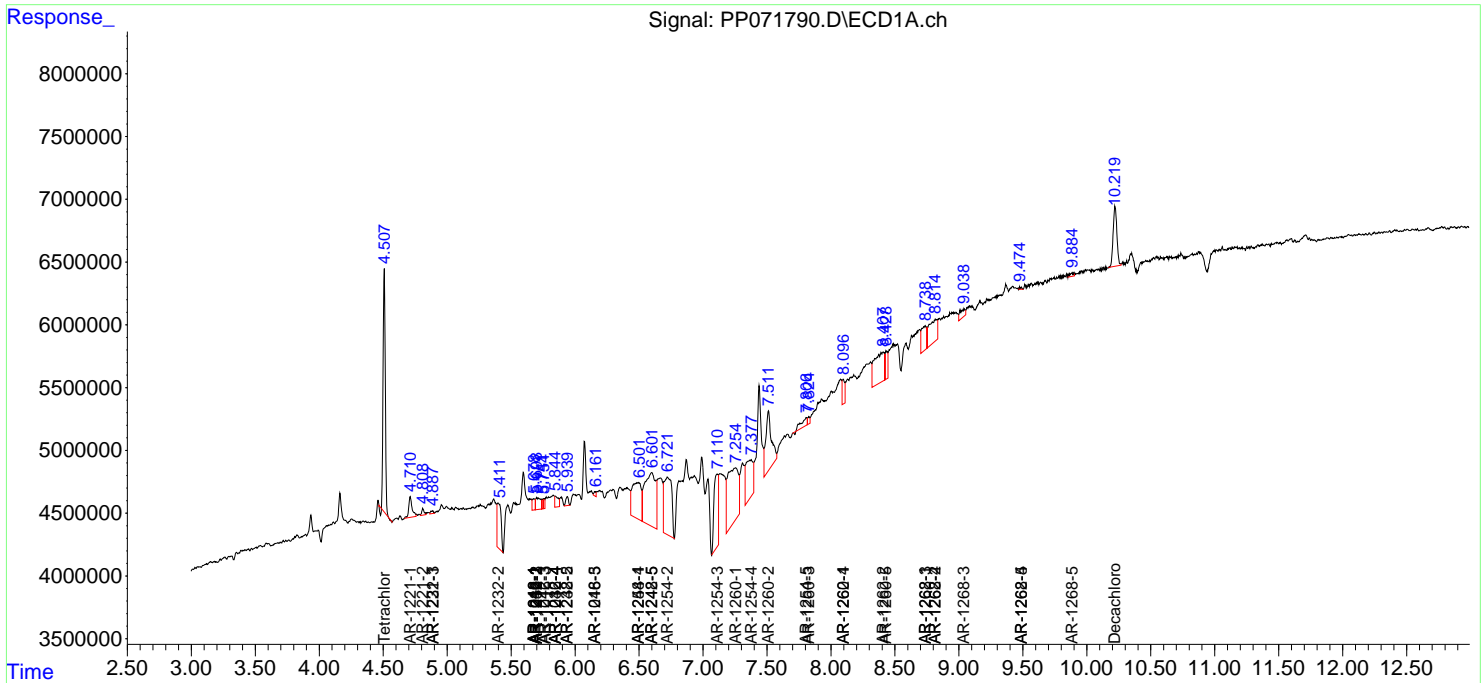
(f)=RT Delta > 1/2 Window (#)=Amounts differ by > 25% (m)=manual int.

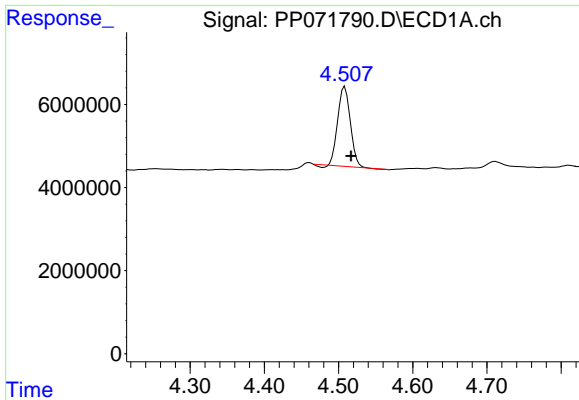
Data Path : Z:\pestpcbsrv\HPCHEM1\ECD_P\Data\PP050525\
 Data File : PP071790.D
 Signal(s) : Signal #1: ECD1A.ch Signal #2: ECD2B.ch
 Acq On : 05 May 2025 19:37
 Operator : YP\AJ
 Sample : Q1952-01
 Misc :
 ALS Vial : 21 Sample Multiplier: 1

Instrument :
 ECD_P
 ClientSampleId :
 CLEAN-FILL

Integration File signal 1: autoint1.e
 Integration File signal 2: autoint2.e
 Quant Time: May 06 02:32:09 2025
 Quant Method : Z:\pestpcbsrv\HPCHEM1\ECD_P\methods\PP042225.M
 Quant Title : GC EXTRACTABLES
 QLast Update : Wed Apr 23 05:02:06 2025
 Response via : Initial Calibration
 Integrator: ChemStation

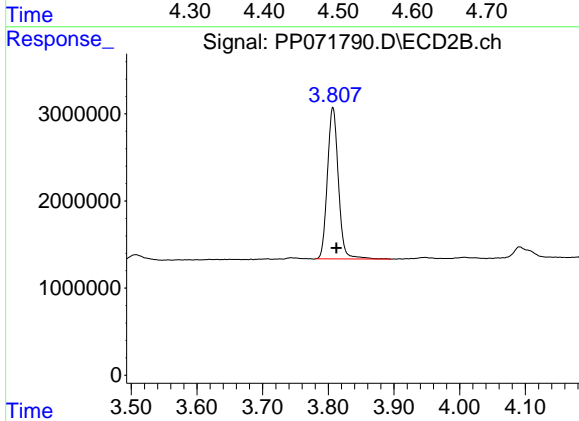
Volume Inj. : 2 µl
 Signal #1 Phase : ZB-MR1 Signal #2 Phase: ZB-MR2
 Signal #1 Info : 30Mx0.32mmx 0.50µ Signal #2 Info : 30M x 0.32mm x 0.25µm



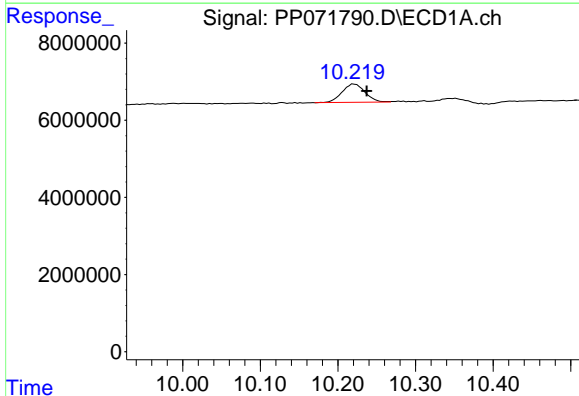


#1 Tetrachloro-m-xylene
 R.T.: 4.508 min
 Delta R.T.: -0.009 min
 Response: 22557119
 Conc: 11.38 ng/ml

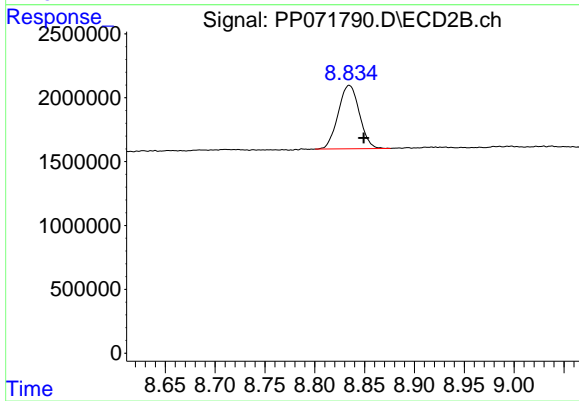
Instrument :
 ECD_P
 ClientSampleId :
 CLEAN-FILL



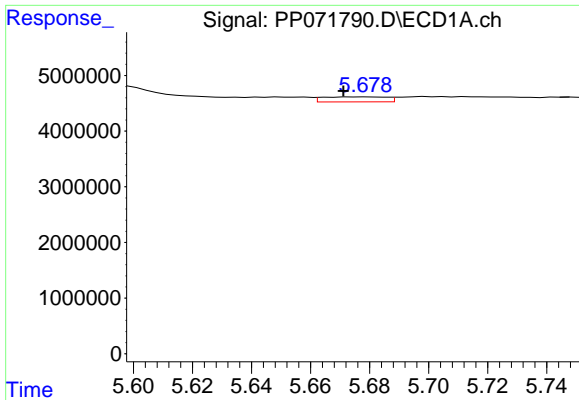
#1 Tetrachloro-m-xylene
 R.T.: 3.807 min
 Delta R.T.: -0.005 min
 Response: 20222528
 Conc: 14.36 ng/ml



#2 Decachlorobiphenyl
 R.T.: 10.221 min
 Delta R.T.: -0.016 min
 Response: 9716832
 Conc: 6.71 ng/ml



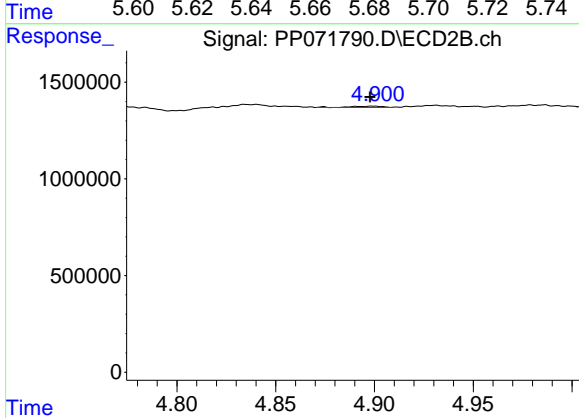
#2 Decachlorobiphenyl
 R.T.: 8.835 min
 Delta R.T.: -0.014 min
 Response: 7367612
 Conc: 8.40 ng/ml



#3 AR-1016-1

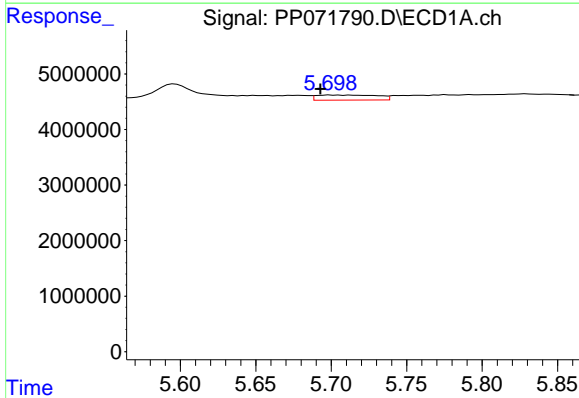
R.T.: 5.679 min
 Delta R.T.: 0.008 min
 Response: 1363233
 Conc: 20.33 ng/ml

Instrument :
 ECD_P
 ClientSampleId :
 CLEAN-FILL



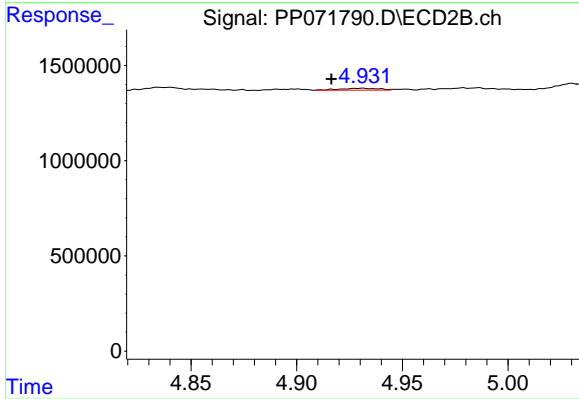
#3 AR-1016-1

R.T.: 4.900 min
 Delta R.T.: 0.002 min
 Response: 71448
 Conc: 1.33 ng/ml



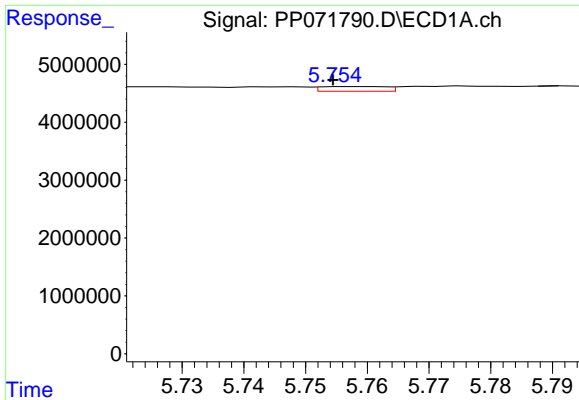
#4 AR-1016-2

R.T.: 5.700 min
 Delta R.T.: 0.007 min
 Response: 2555981
 Conc: 24.91 ng/ml



#4 AR-1016-2

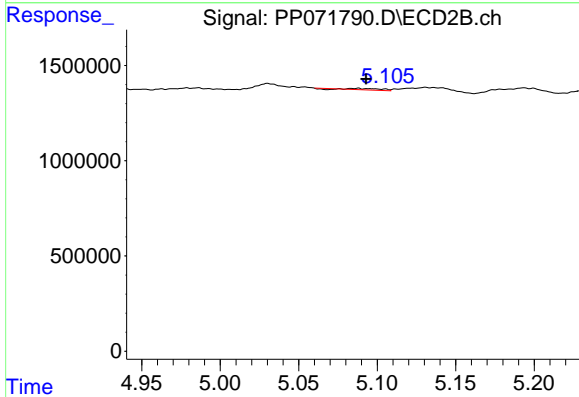
R.T.: 4.931 min
 Delta R.T.: 0.015 min
 Response: 125423
 Conc: 1.64 ng/ml



#5 AR-1016-3

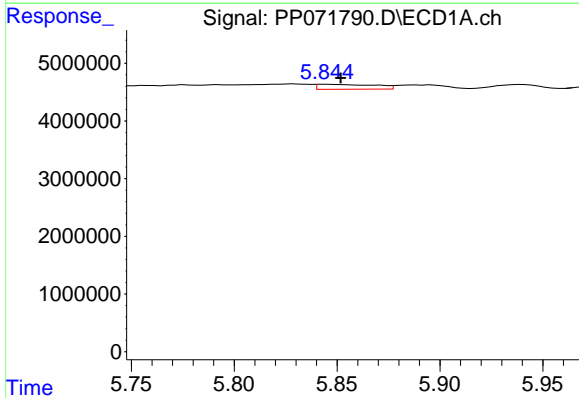
R.T.: 5.759 min
 Delta R.T.: 0.005 min
 Response: 587849
 Conc: 9.54 ng/ml

Instrument :
 ECD_P
 ClientSampleId :
 CLEAN-FILL



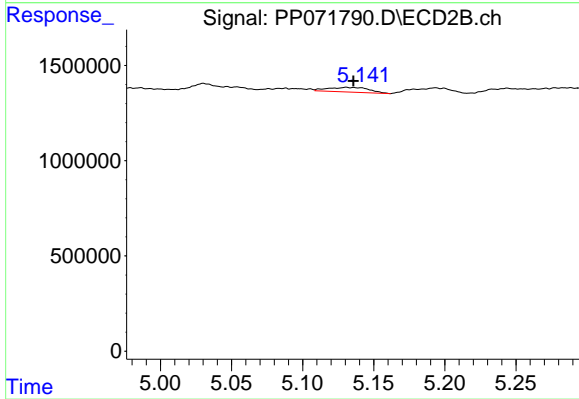
#5 AR-1016-3

R.T.: 5.088 min
 Delta R.T.: -0.005 min
 Response: 77402
 Conc: 1.83 ng/ml



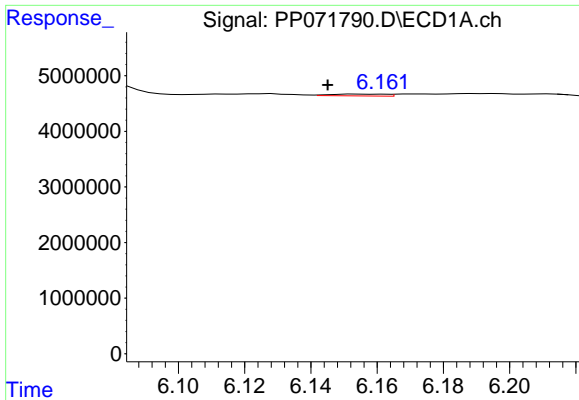
#6 AR-1016-4

R.T.: 5.845 min
 Delta R.T.: -0.007 min
 Response: 1698134
 Conc: 33.10 ng/ml



#6 AR-1016-4

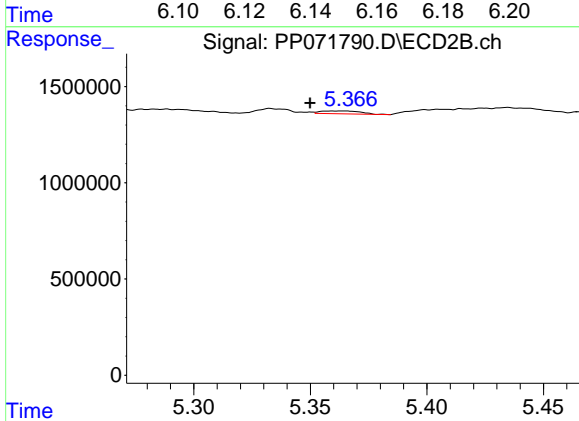
R.T.: 5.131 min
 Delta R.T.: -0.005 min
 Response: 492686
 Conc: 14.29 ng/ml



#7 AR-1016-5

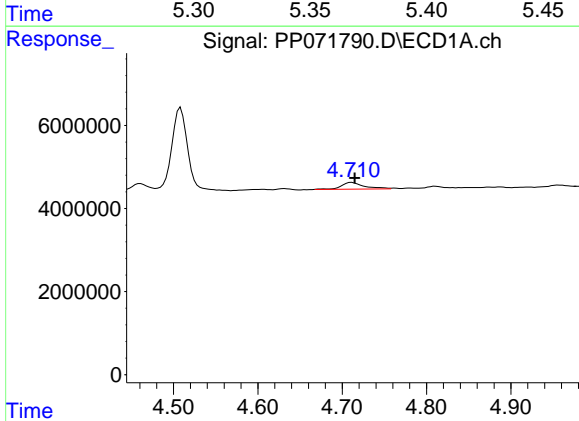
R.T.: 6.154 min
 Delta R.T.: 0.009 min
 Response: 380464
 Conc: 7.89 ng/ml

Instrument :
 ECD_P
 ClientSampleId :
 CLEAN-FILL



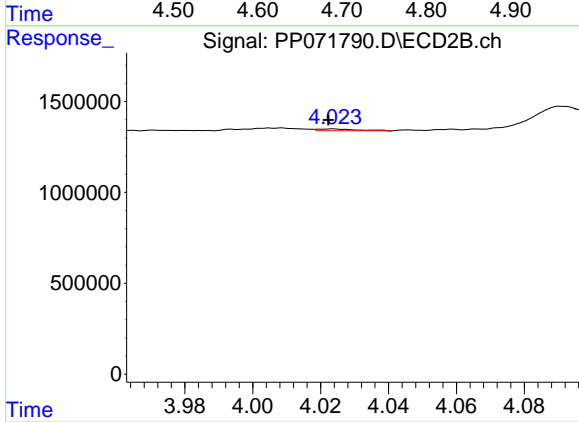
#7 AR-1016-5

R.T.: 5.364 min
 Delta R.T.: 0.014 min
 Response: 178566
 Conc: 4.02 ng/ml



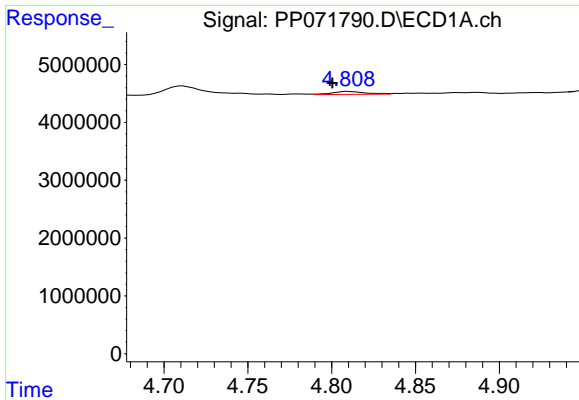
#8 AR-1221-1

R.T.: 4.711 min
 Delta R.T.: -0.003 min
 Response: 2981868
 Conc: 123.64 ng/ml



#8 AR-1221-1

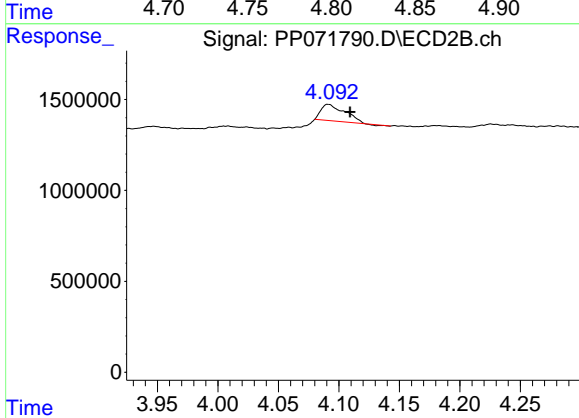
R.T.: 4.024 min
 Delta R.T.: 0.001 min
 Response: 81437
 Conc: 3.70 ng/ml



#9 AR-1221-2

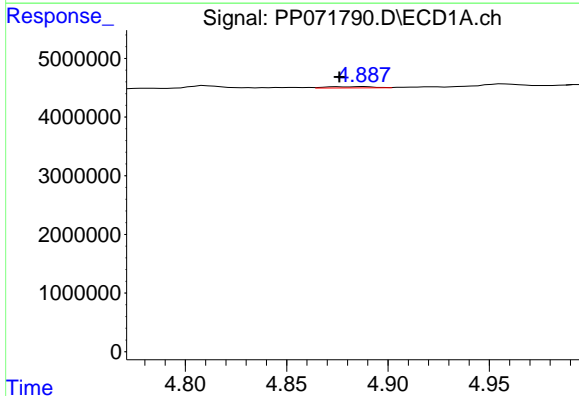
R.T.: 4.810 min
 Delta R.T.: 0.010 min
 Response: 700373
 Conc: 38.87 ng/ml

Instrument :
 ECD_P
 ClientSampleId :
 CLEAN-FILL



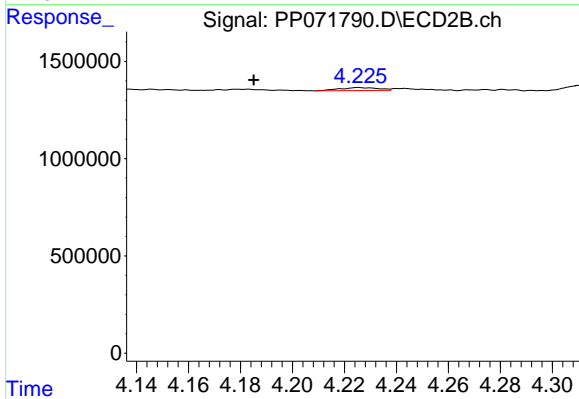
#9 AR-1221-2

R.T.: 4.091 min
 Delta R.T.: -0.018 min
 Response: 1230992
 Conc: 74.33 ng/ml



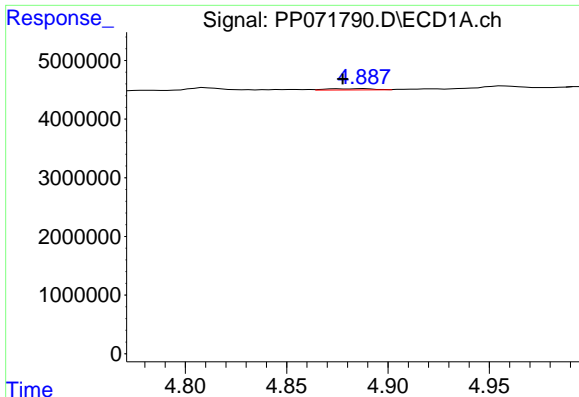
#10 AR-1221-3

R.T.: 4.888 min
 Delta R.T.: 0.012 min
 Response: 336887
 Conc: 5.95 ng/ml



#10 AR-1221-3

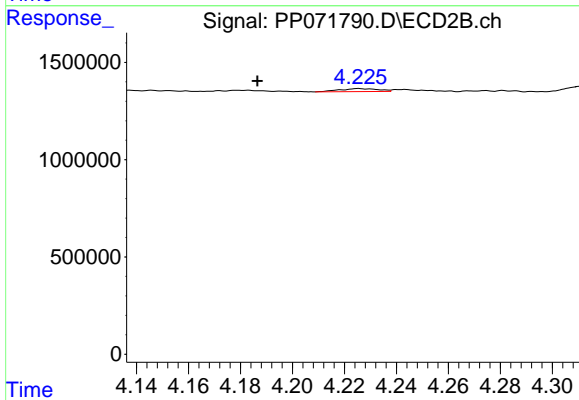
R.T.: 4.226 min
 Delta R.T.: 0.040 min
 Response: 157482
 Conc: 3.25 ng/ml



#11 AR-1232-1

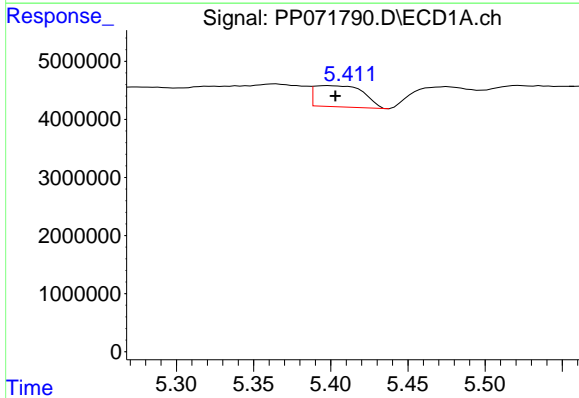
R.T.: 4.888 min
 Delta R.T.: 0.010 min
 Response: 336887
 Conc: 7.50 ng/ml

Instrument :
 ECD_P
 ClientSampleId :
 CLEAN-FILL



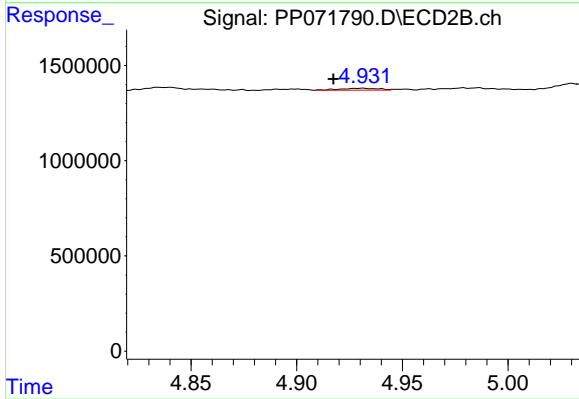
#11 AR-1232-1

R.T.: 4.226 min
 Delta R.T.: 0.039 min
 Response: 157482
 Conc: 4.11 ng/ml



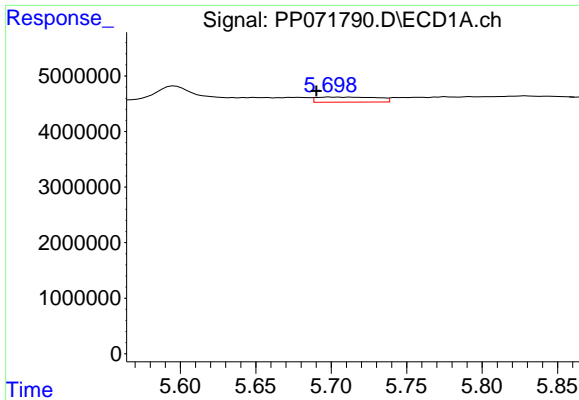
#12 AR-1232-2

R.T.: 5.399 min
 Delta R.T.: -0.005 min
 Response: 8038388
 Conc: 349.30 ng/ml



#12 AR-1232-2

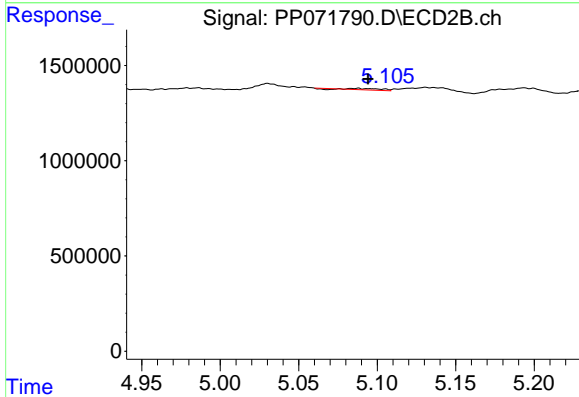
R.T.: 4.931 min
 Delta R.T.: 0.014 min
 Response: 125423
 Conc: 3.28 ng/ml



#13 AR-1232-3

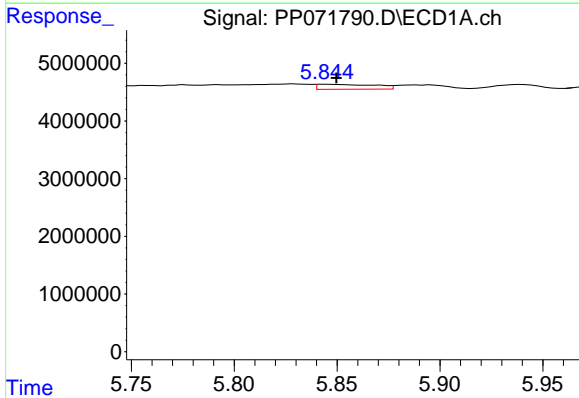
R.T.: 5.700 min
 Delta R.T.: 0.010 min
 Response: 2555981
 Conc: 54.13 ng/ml

Instrument :
 ECD_P
 ClientSampleId :
 CLEAN-FILL



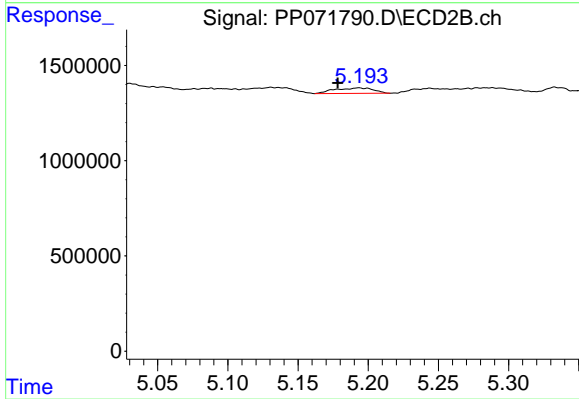
#13 AR-1232-3

R.T.: 5.088 min
 Delta R.T.: -0.006 min
 Response: 77402
 Conc: 3.66 ng/ml



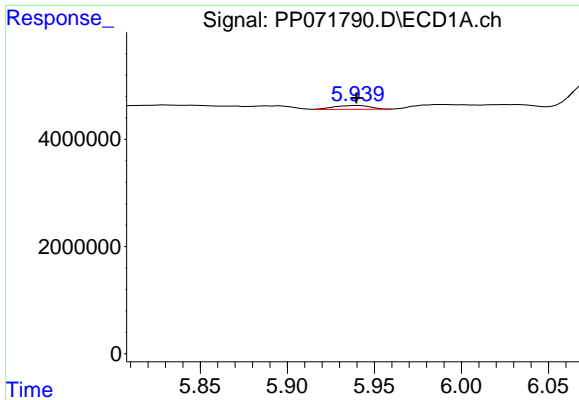
#14 AR-1232-4

R.T.: 5.845 min
 Delta R.T.: -0.005 min
 Response: 1698134
 Conc: 73.26 ng/ml



#14 AR-1232-4

R.T.: 5.193 min
 Delta R.T.: 0.015 min
 Response: 556302
 Conc: 30.00 ng/ml

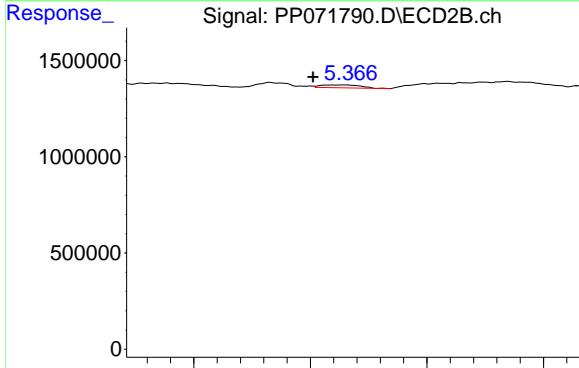


#15 AR-1232-5

R.T.: 5.940 min
 Delta R.T.: 0.000 min
 Response: 1033782
 Conc: 64.03 ng/ml

Instrument :
 ECD_P
 ClientSampleId :
 CLEAN-FILL

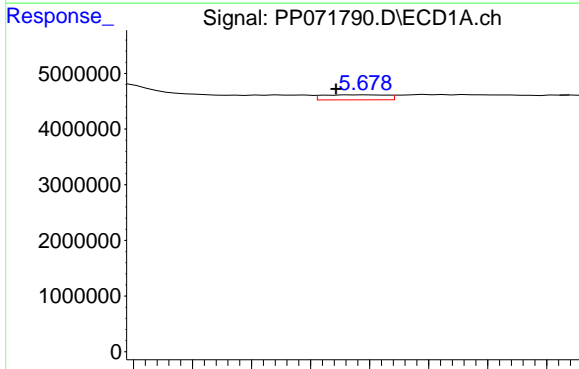
Time 5.85 5.90 5.95 6.00 6.05



#15 AR-1232-5

R.T.: 5.364 min
 Delta R.T.: 0.013 min
 Response: 178566
 Conc: 8.97 ng/ml

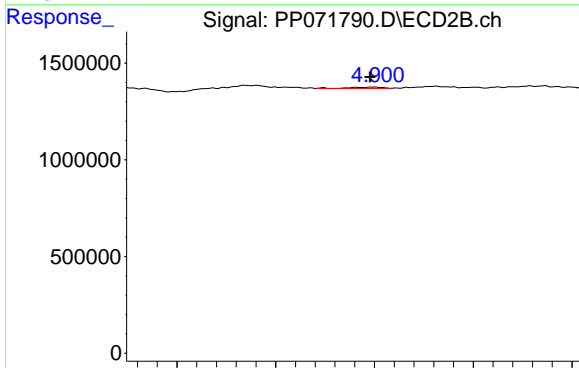
Time 5.30 5.35 5.40 5.45



#16 AR-1242-1

R.T.: 5.679 min
 Delta R.T.: 0.010 min
 Response: 1363233
 Conc: 24.89 ng/ml

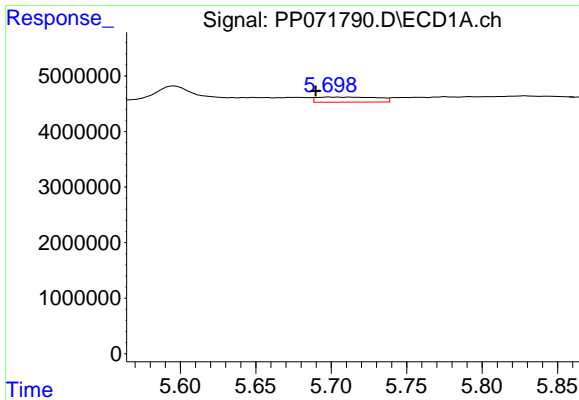
Time 5.60 5.62 5.64 5.66 5.68 5.70 5.72 5.74



#16 AR-1242-1

R.T.: 4.900 min
 Delta R.T.: 0.002 min
 Response: 71448
 Conc: 1.55 ng/ml

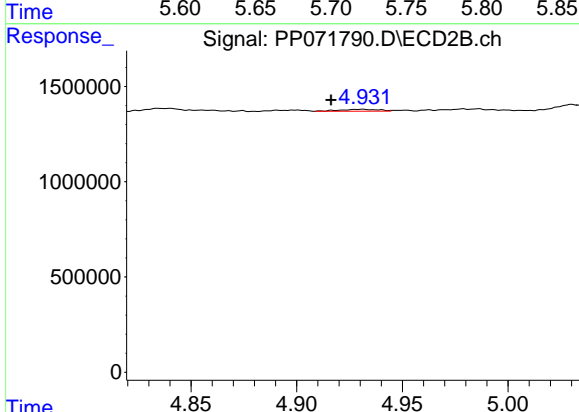
Time 4.80 4.85 4.90 4.95



#17 AR-1242-2

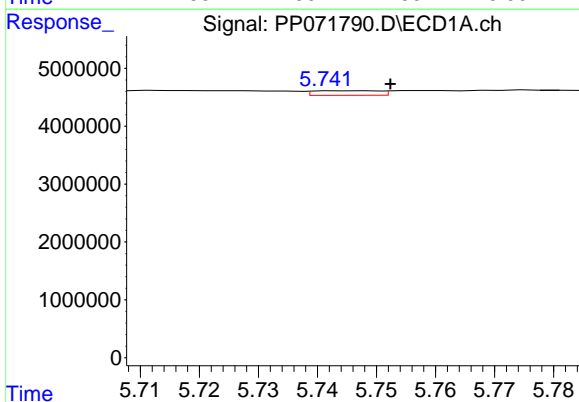
R.T.: 5.700 min
 Delta R.T.: 0.010 min
 Response: 2555981
 Conc: 30.08 ng/ml

Instrument :
 ECD_P
 ClientSampleId :
 CLEAN-FILL



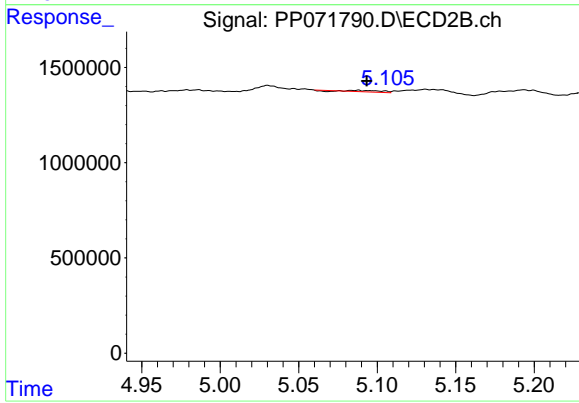
#17 AR-1242-2

R.T.: 4.931 min
 Delta R.T.: 0.015 min
 Response: 125423
 Conc: 1.90 ng/ml



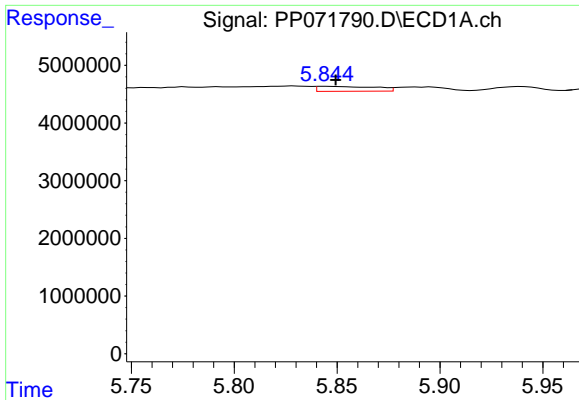
#18 AR-1242-3

R.T.: 5.746 min
 Delta R.T.: -0.006 min
 Response: 605222
 Conc: 11.84 ng/ml



#18 AR-1242-3

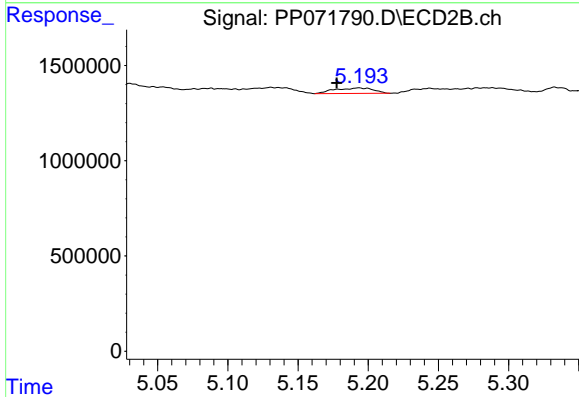
R.T.: 5.088 min
 Delta R.T.: -0.006 min
 Response: 77402
 Conc: 2.12 ng/ml



#19 AR-1242-4

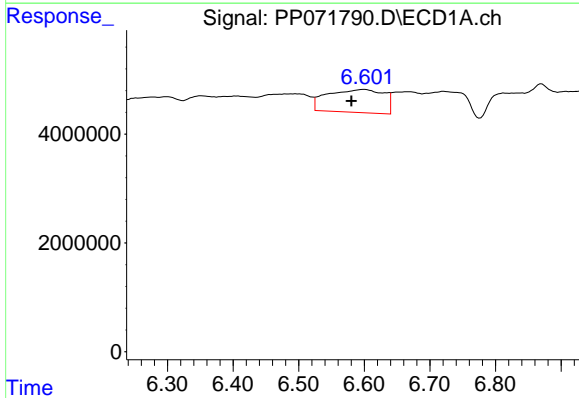
R.T.: 5.845 min
 Delta R.T.: -0.004 min
 Response: 1698134
 Conc: 40.23 ng/ml

Instrument :
 ECD_P
 ClientSampleId :
 CLEAN-FILL



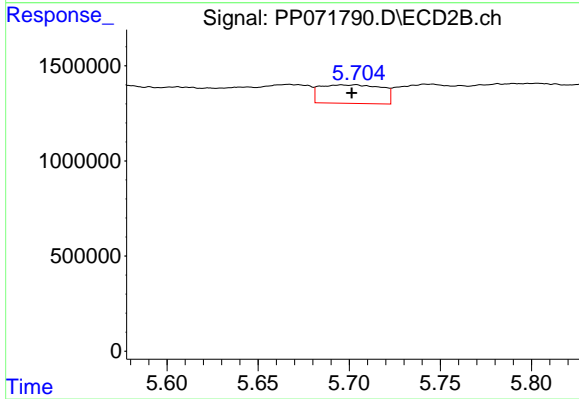
#19 AR-1242-4

R.T.: 5.193 min
 Delta R.T.: 0.016 min
 Response: 556302
 Conc: 15.58 ng/ml



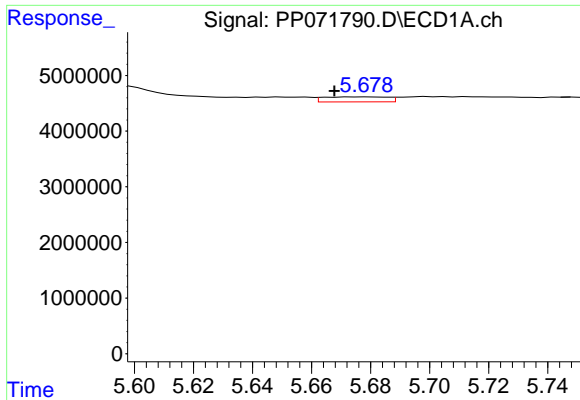
#20 AR-1242-5

R.T.: 6.600 min
 Delta R.T.: 0.019 min
 Response: 25218617
 Conc: 544.79 ng/ml



#20 AR-1242-5

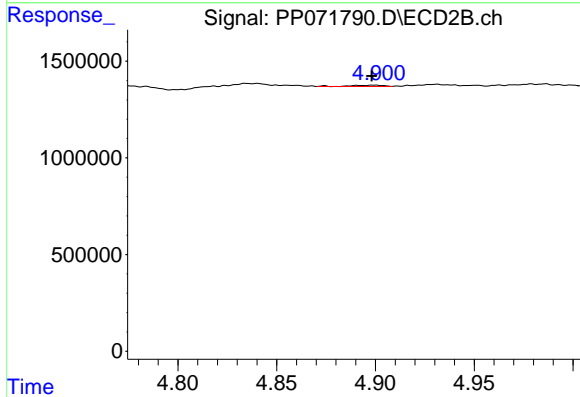
R.T.: 5.704 min
 Delta R.T.: 0.002 min
 Response: 2286610
 Conc: 52.56 ng/ml



#21 AR-1248-1

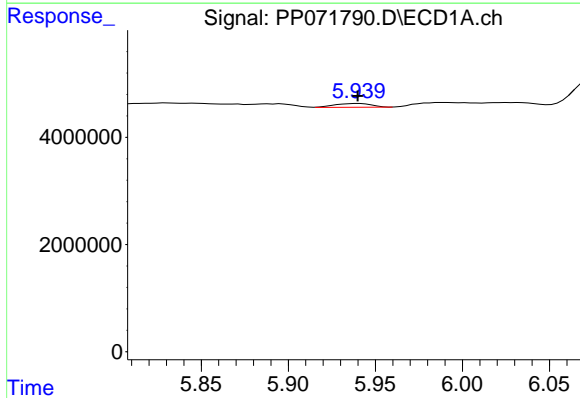
R.T.: 5.679 min
 Delta R.T.: 0.011 min
 Response: 1363233
 Conc: 31.75 ng/ml

Instrument :
 ECD_P
 ClientSampleId :
 CLEAN-FILL



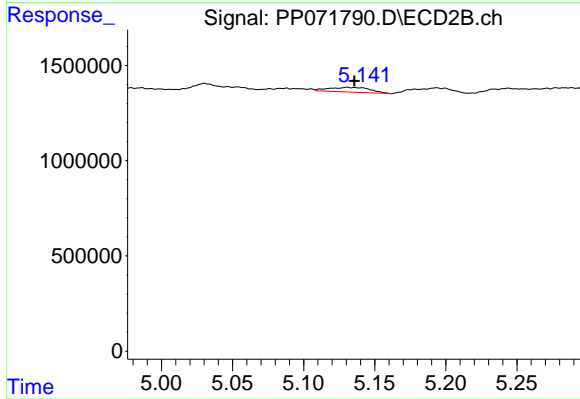
#21 AR-1248-1

R.T.: 4.900 min
 Delta R.T.: 0.001 min
 Response: 71448
 Conc: 1.98 ng/ml



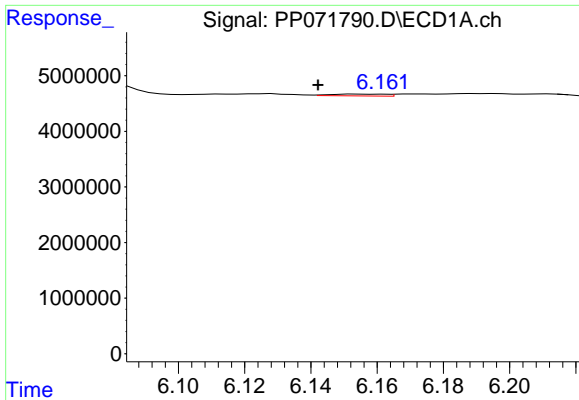
#22 AR-1248-2

R.T.: 5.940 min
 Delta R.T.: 0.000 min
 Response: 1033782
 Conc: 17.11 ng/ml



#22 AR-1248-2

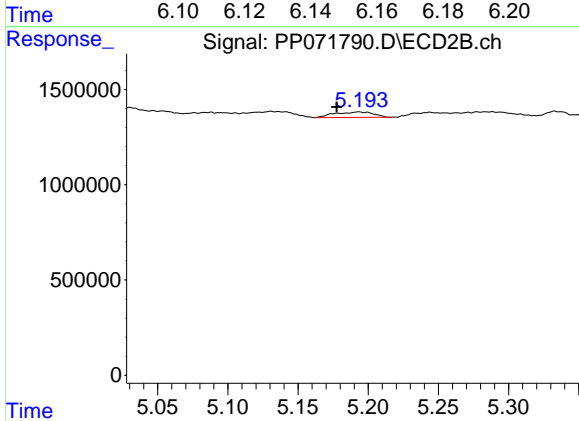
R.T.: 5.131 min
 Delta R.T.: -0.005 min
 Response: 492686
 Conc: 10.06 ng/ml



#23 AR-1248-3

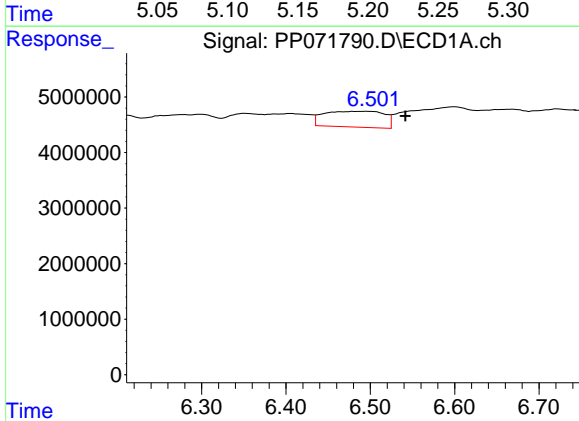
R.T.: 6.154 min
 Delta R.T.: 0.012 min
 Response: 380464
 Conc: 5.70 ng/ml

Instrument :
 ECD_P
 ClientSampleId :
 CLEAN-FILL



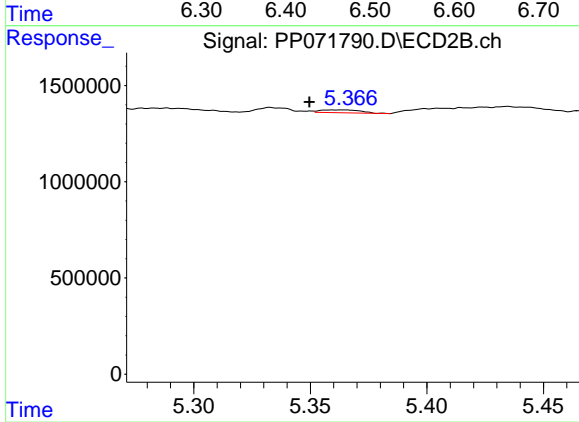
#23 AR-1248-3

R.T.: 5.193 min
 Delta R.T.: 0.016 min
 Response: 556302
 Conc: 10.89 ng/ml



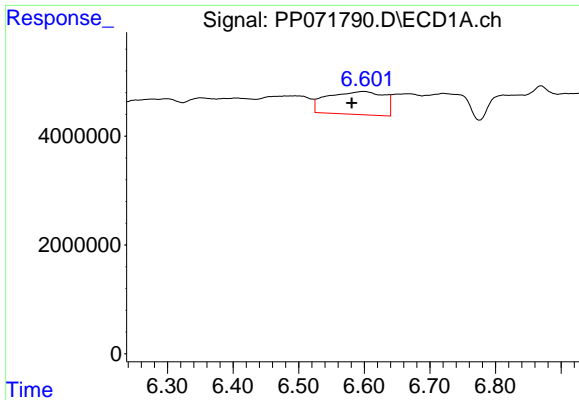
#24 AR-1248-4

R.T.: 6.496 min
 Delta R.T.: -0.046 min
 Response: 14160075
 Conc: 167.36 ng/ml



#24 AR-1248-4

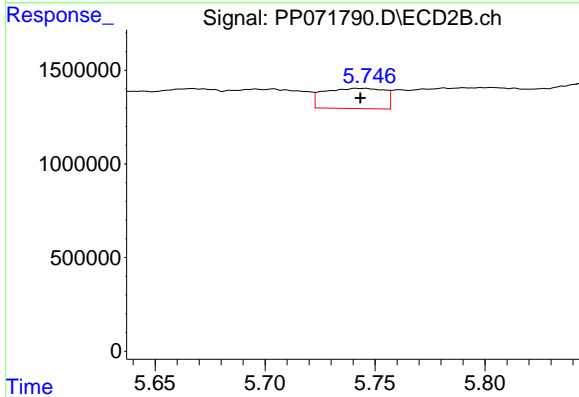
R.T.: 5.364 min
 Delta R.T.: 0.015 min
 Response: 178566
 Conc: 2.94 ng/ml



#25 AR-1248-5

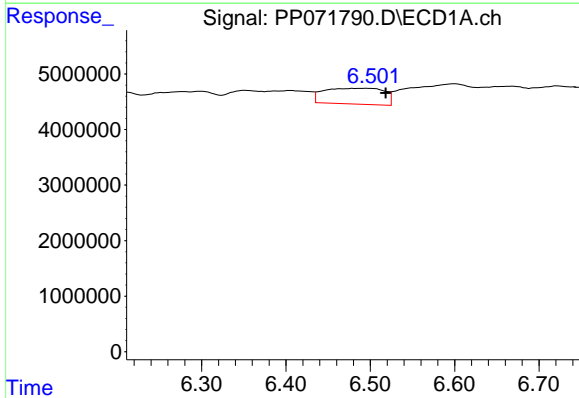
R.T.: 6.600 min
 Delta R.T.: 0.019 min
 Response: 25218617
 Conc: 317.42 ng/ml

Instrument :
 ECD_P
 ClientSampleId :
 CLEAN-FILL



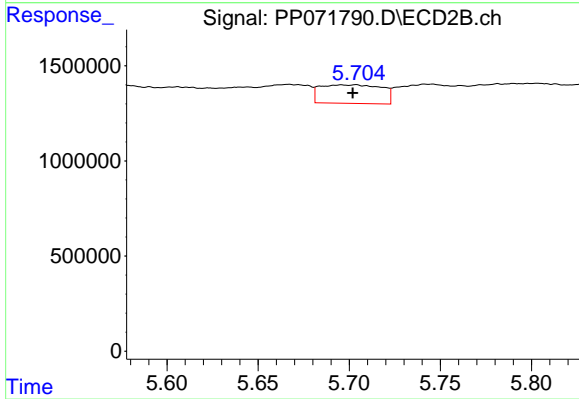
#25 AR-1248-5

R.T.: 5.745 min
 Delta R.T.: 0.002 min
 Response: 2059326
 Conc: 35.33 ng/ml



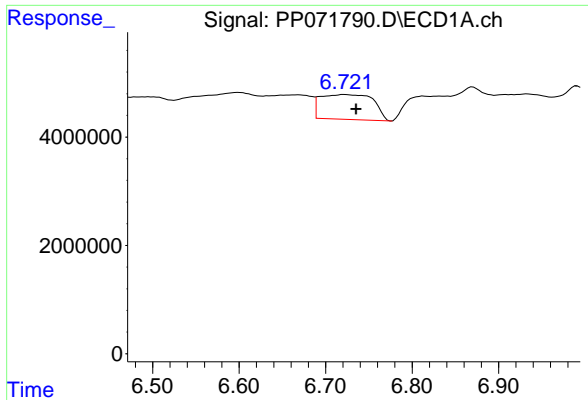
#26 AR-1254-1

R.T.: 6.496 min
 Delta R.T.: -0.023 min
 Response: 14160075
 Conc: 172.79 ng/ml



#26 AR-1254-1

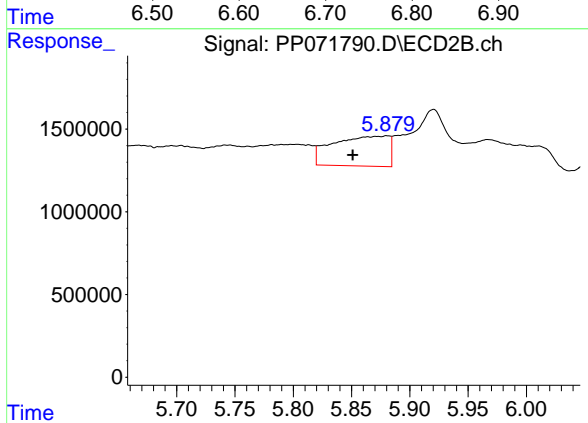
R.T.: 5.704 min
 Delta R.T.: 0.002 min
 Response: 2286610
 Conc: 25.02 ng/ml



#27 AR-1254-2

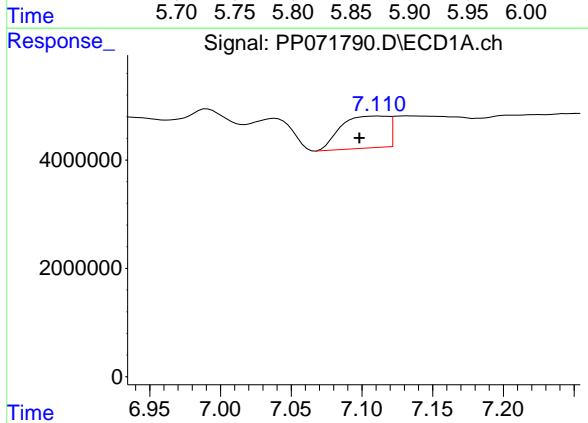
R.T.: 6.721 min
 Delta R.T.: -0.014 min
 Response: 19599597
 Conc: 154.24 ng/ml

Instrument :
 ECD_P
 ClientSampleId :
 CLEAN-FILL



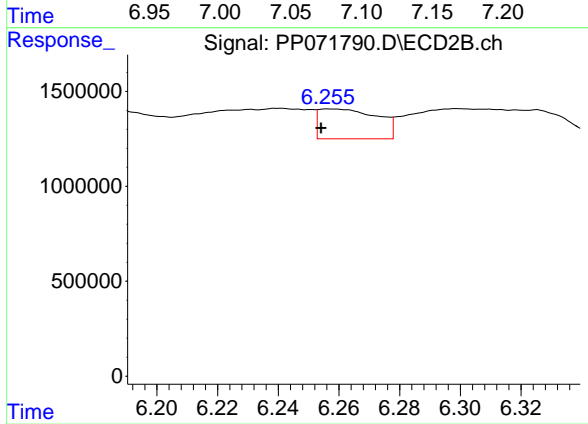
#27 AR-1254-2

R.T.: 5.880 min
 Delta R.T.: 0.030 min
 Response: 6102916
 Conc: 77.53 ng/ml



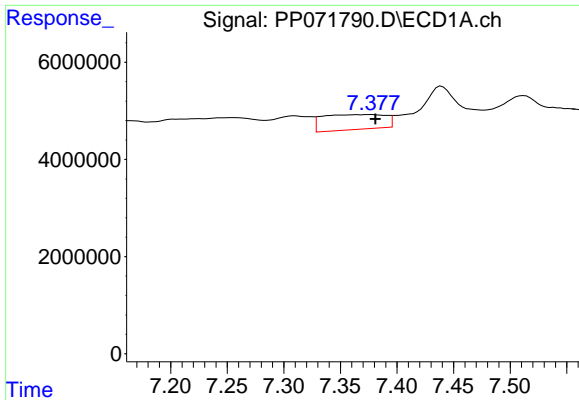
#28 AR-1254-3

R.T.: 7.111 min
 Delta R.T.: 0.013 min
 Response: 13625128
 Conc: 106.63 ng/ml



#28 AR-1254-3

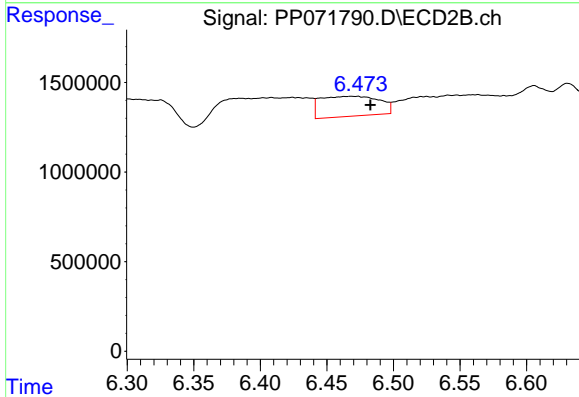
R.T.: 6.257 min
 Delta R.T.: 0.003 min
 Response: 2096599
 Conc: 17.69 ng/ml



#29 AR-1254-4

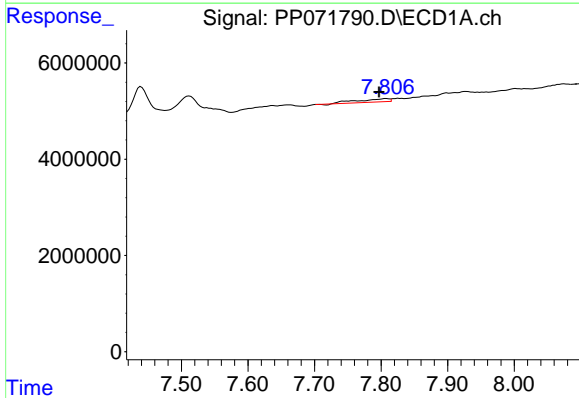
R.T.: 7.376 min
 Delta R.T.: -0.004 min
 Response: 11980246
 Conc: 101.95 ng/ml

Instrument :
 ECD_P
 ClientSampleId :
 CLEAN-FILL



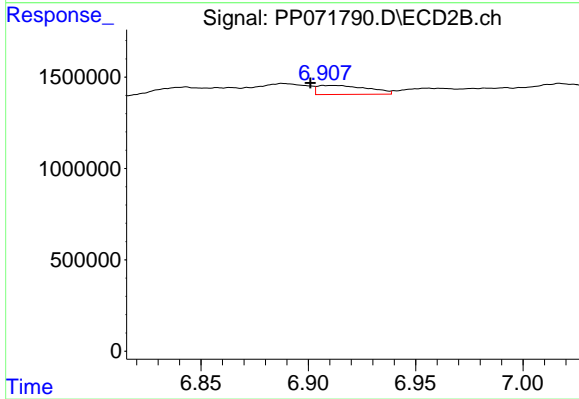
#29 AR-1254-4

R.T.: 6.469 min
 Delta R.T.: -0.014 min
 Response: 3435973
 Conc: 44.53 ng/ml



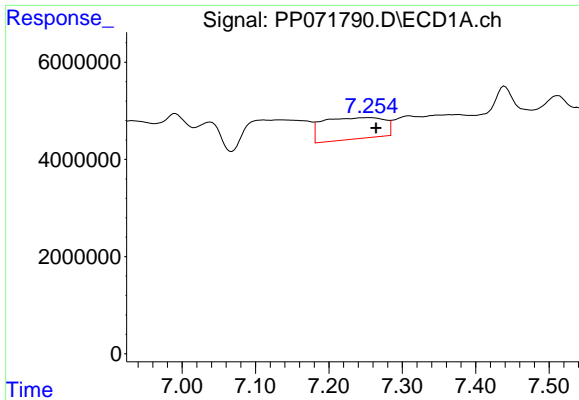
#30 AR-1254-5

R.T.: 7.808 min
 Delta R.T.: 0.011 min
 Response: 2106657
 Conc: 19.55 ng/ml



#30 AR-1254-5

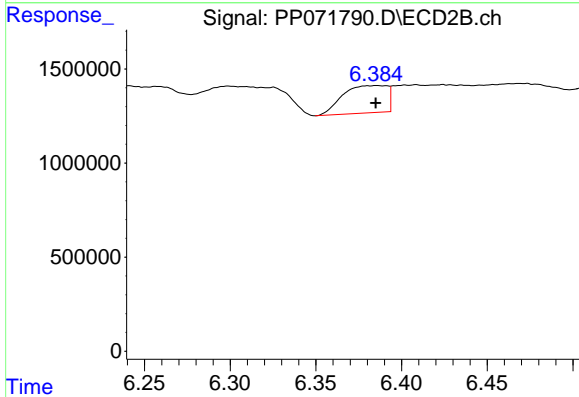
R.T.: 6.912 min
 Delta R.T.: 0.011 min
 Response: 806491
 Conc: 7.95 ng/ml



#31 AR-1260-1

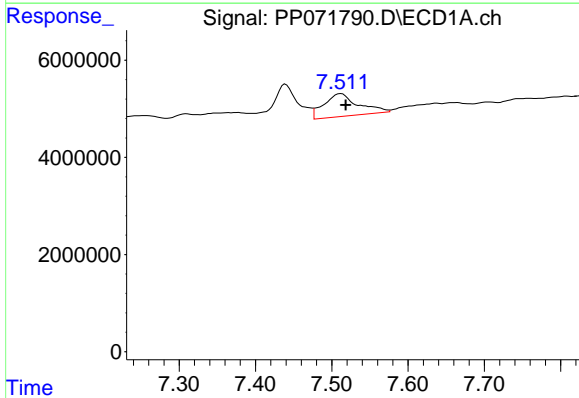
R.T.: 7.256 min
 Delta R.T.: -0.009 min
 Response: 25609720
 Conc: 266.70 ng/ml

Instrument :
 ECD_P
 ClientSampleId :
 CLEAN-FILL



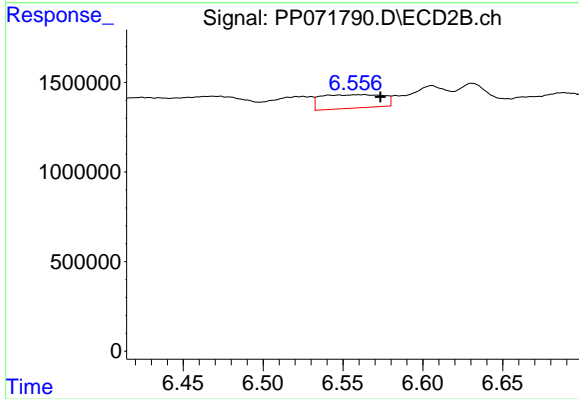
#31 AR-1260-1

R.T.: 6.386 min
 Delta R.T.: 0.000 min
 Response: 2620280
 Conc: 36.24 ng/ml



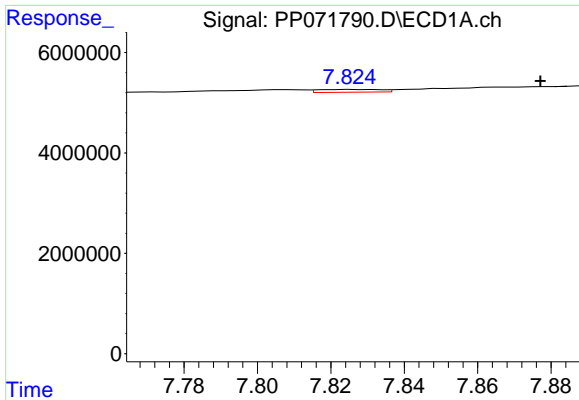
#32 AR-1260-2

R.T.: 7.512 min
 Delta R.T.: -0.006 min
 Response: 14754365
 Conc: 103.12 ng/ml



#32 AR-1260-2

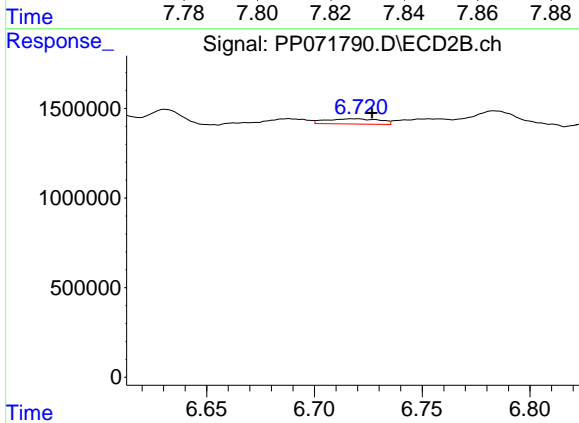
R.T.: 6.563 min
 Delta R.T.: -0.010 min
 Response: 2026926
 Conc: 23.18 ng/ml



#33 AR-1260-3

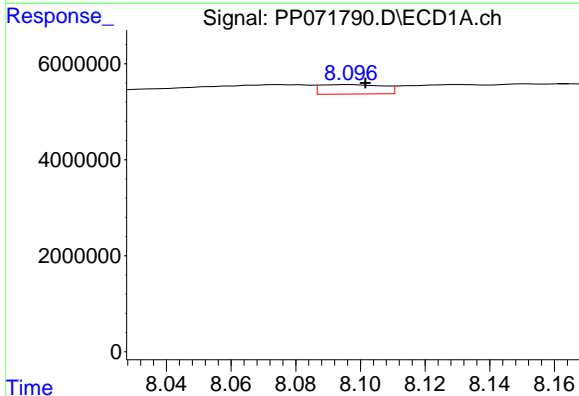
R.T.: 7.827 min
 Delta R.T.: -0.050 min
 Response: 657116
 Conc: 5.86 ng/ml

Instrument :
 ECD_P
 ClientSampleId :
 CLEAN-FILL



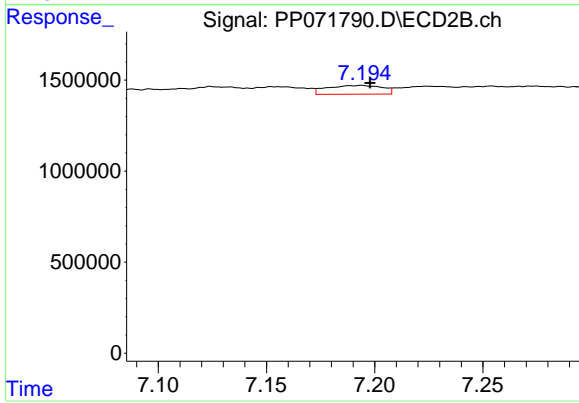
#33 AR-1260-3

R.T.: 6.719 min
 Delta R.T.: -0.007 min
 Response: 503866
 Conc: 6.43 ng/ml



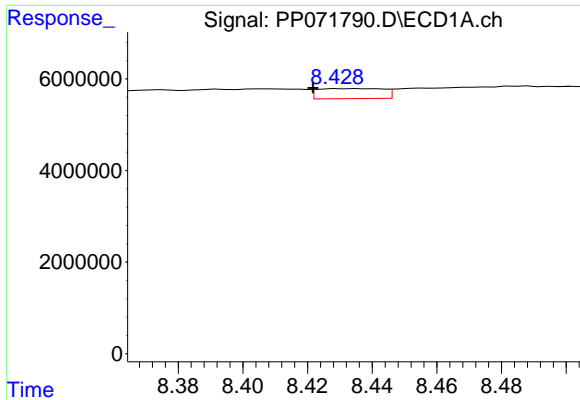
#34 AR-1260-4

R.T.: 8.096 min
 Delta R.T.: -0.005 min
 Response: 2659256
 Conc: 23.56 ng/ml



#34 AR-1260-4

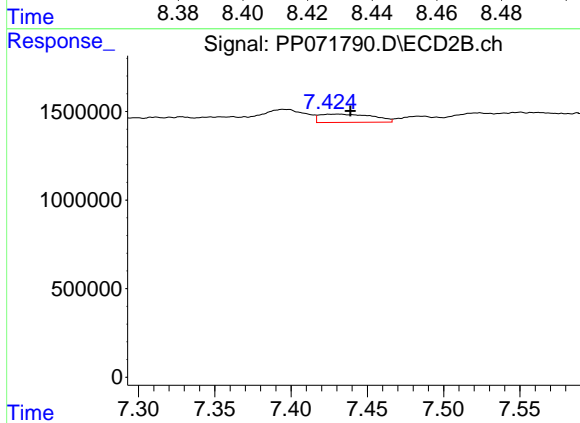
R.T.: 7.194 min
 Delta R.T.: -0.004 min
 Response: 853776
 Conc: 13.53 ng/ml



#35 AR-1260-5

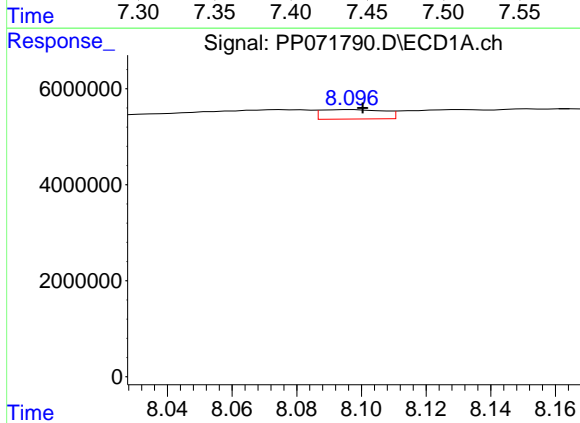
R.T.: 8.434 min
 Delta R.T.: 0.012 min
 Response: 3111944
 Conc: 13.73 ng/ml

Instrument :
 ECD_P
 ClientSampleId :
 CLEAN-FILL



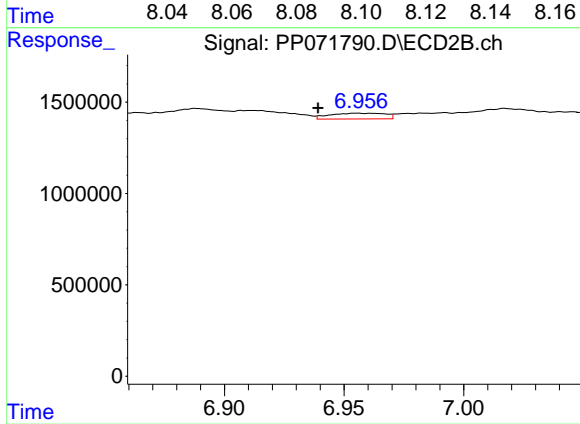
#35 AR-1260-5

R.T.: 7.431 min
 Delta R.T.: -0.008 min
 Response: 1137264
 Conc: 7.54 ng/ml



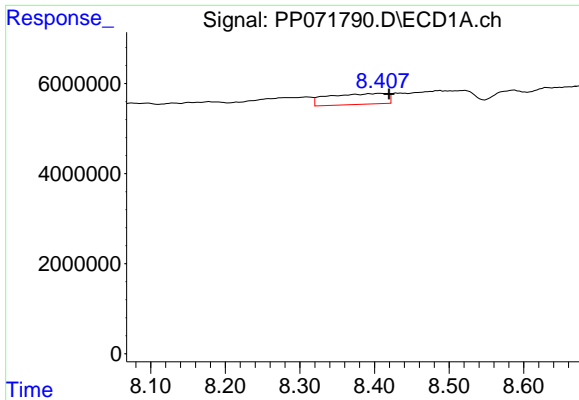
#36 AR-1262-1

R.T.: 8.096 min
 Delta R.T.: -0.004 min
 Response: 2659256
 Conc: 18.40 ng/ml



#36 AR-1262-1

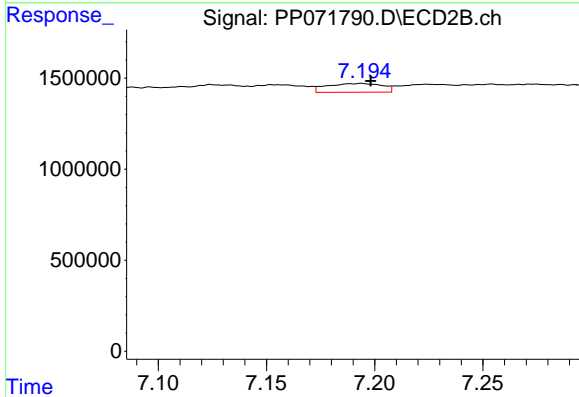
R.T.: 6.956 min
 Delta R.T.: 0.016 min
 Response: 509357
 Conc: 4.48 ng/ml



#37 AR-1262-2

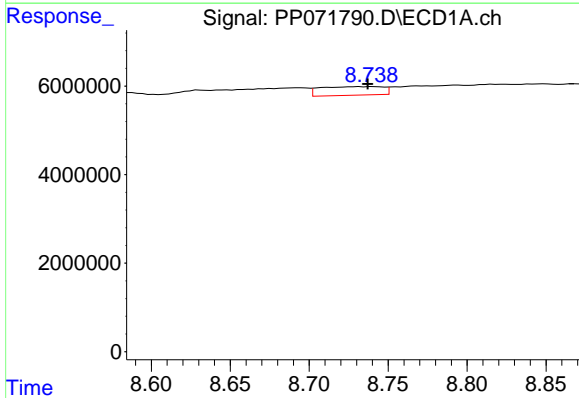
R.T.: 8.408 min
 Delta R.T.: -0.011 min
 Response: 13222162
 Conc: 48.22 ng/ml

Instrument :
 ECD_P
 ClientSampleId :
 CLEAN-FILL



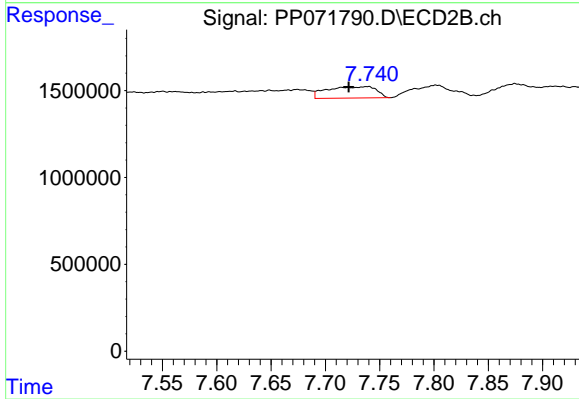
#37 AR-1262-2

R.T.: 7.194 min
 Delta R.T.: -0.004 min
 Response: 853776
 Conc: 9.25 ng/ml



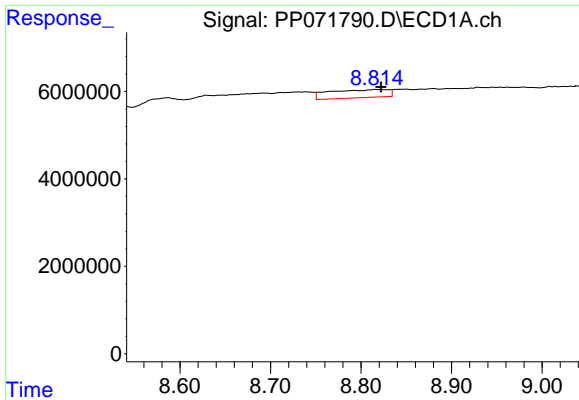
#38 AR-1262-3

R.T.: 8.740 min
 Delta R.T.: 0.003 min
 Response: 5356449
 Conc: 29.29 ng/ml



#38 AR-1262-3

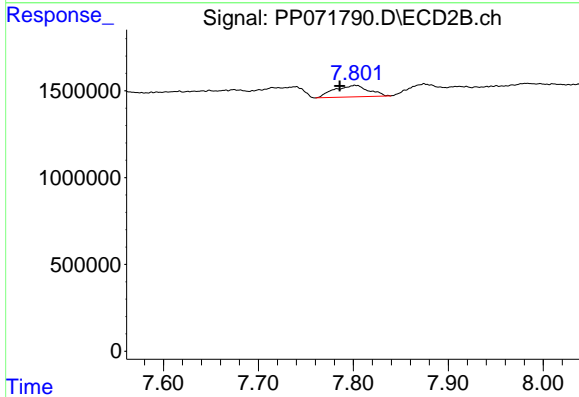
R.T.: 7.739 min
 Delta R.T.: 0.018 min
 Response: 2069665
 Conc: 27.34 ng/ml



#39 AR-1262-4

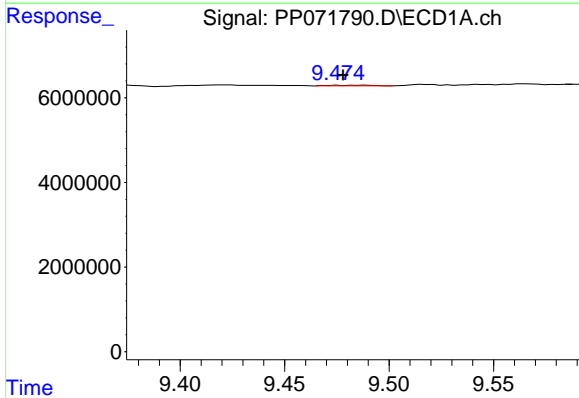
R.T.: 8.822 min
 Delta R.T.: 0.000 min
 Response: 8331218
 Conc: 62.08 ng/ml

Instrument :
 ECD_P
 ClientSampleId :
 CLEAN-FILL



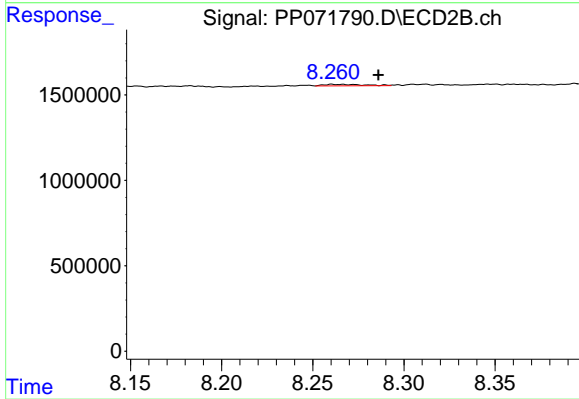
#39 AR-1262-4

R.T.: 7.802 min
 Delta R.T.: 0.016 min
 Response: 1663451
 Conc: 13.33 ng/ml



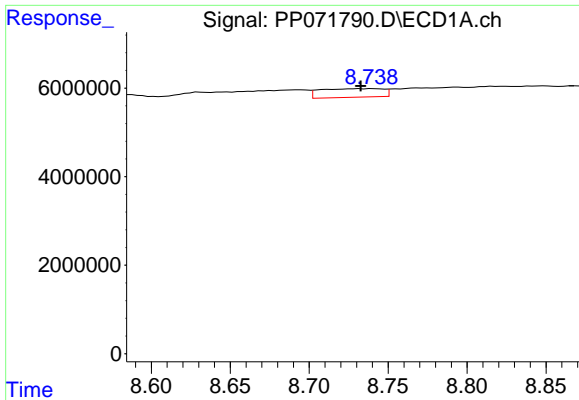
#40 AR-1262-5

R.T.: 9.489 min
 Delta R.T.: 0.011 min
 Response: 190692
 Conc: 2.16 ng/ml



#40 AR-1262-5

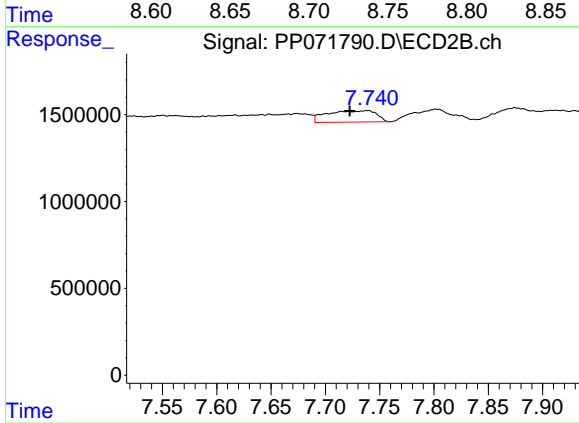
R.T.: 8.261 min
 Delta R.T.: -0.025 min
 Response: 132091
 Conc: 2.38 ng/ml



#41 AR-1268-1

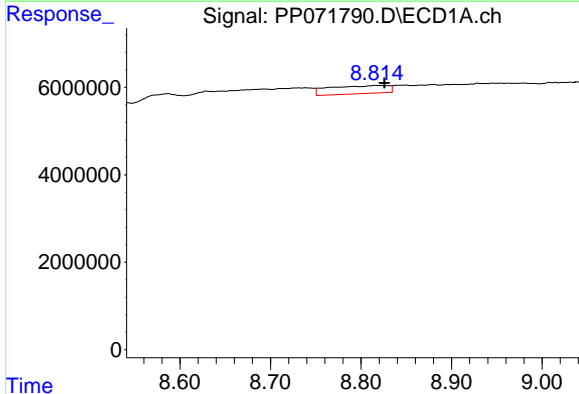
R.T.: 8.740 min
 Delta R.T.: 0.007 min
 Response: 5356449
 Conc: 17.24 ng/ml

Instrument :
 ECD_P
 ClientSampleId :
 CLEAN-FILL



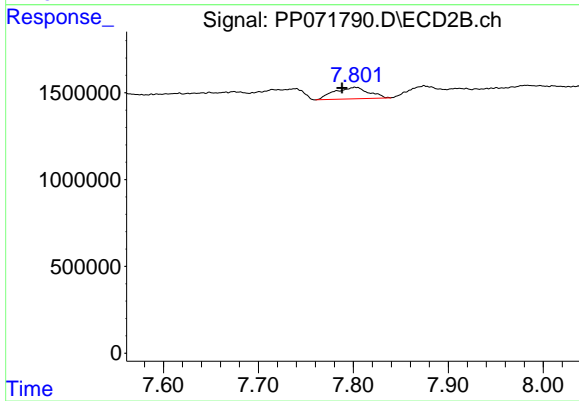
#41 AR-1268-1

R.T.: 7.739 min
 Delta R.T.: 0.017 min
 Response: 2069665
 Conc: 10.36 ng/ml



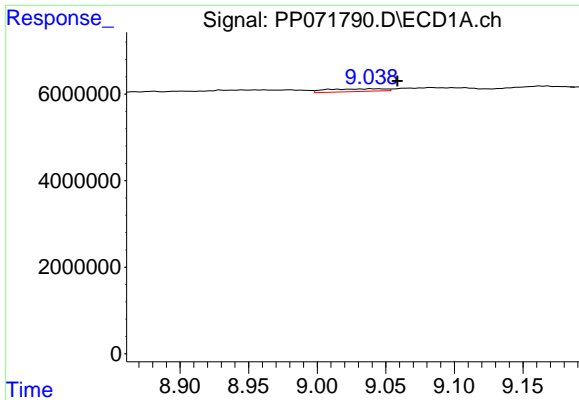
#42 AR-1268-2

R.T.: 8.822 min
 Delta R.T.: -0.004 min
 Response: 8331218
 Conc: 32.32 ng/ml



#42 AR-1268-2

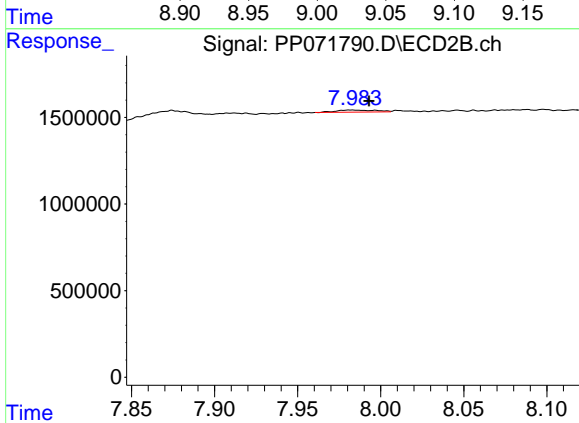
R.T.: 7.802 min
 Delta R.T.: 0.014 min
 Response: 1663451
 Conc: 9.84 ng/ml



#43 AR-1268-3

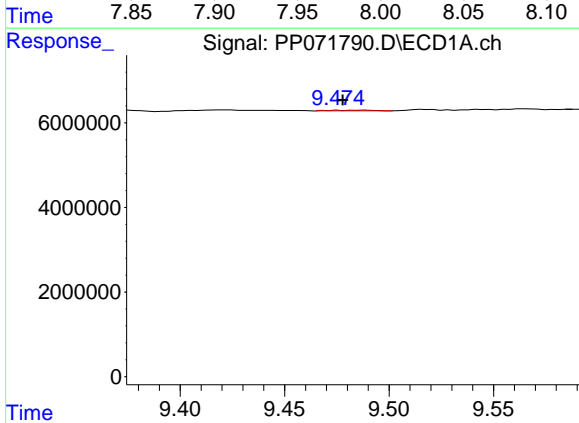
R.T.: 9.041 min
 Delta R.T.: -0.017 min
 Response: 1844793
 Conc: 8.28 ng/ml

Instrument :
 ECD_P
 ClientSampleId :
 CLEAN-FILL



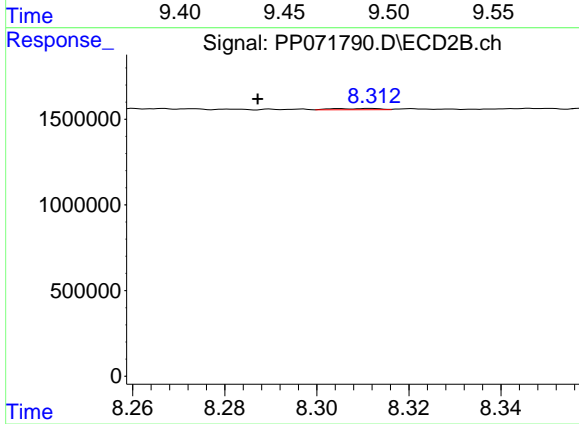
#43 AR-1268-3

R.T.: 7.982 min
 Delta R.T.: -0.011 min
 Response: 207260
 Conc: 1.49 ng/ml



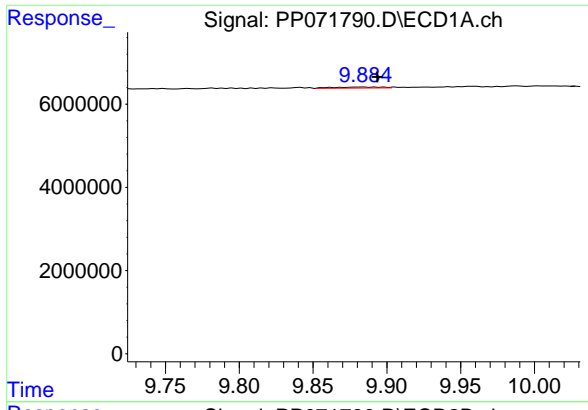
#44 AR-1268-4

R.T.: 9.489 min
 Delta R.T.: 0.011 min
 Response: 190692
 Conc: 2.03 ng/ml



#44 AR-1268-4

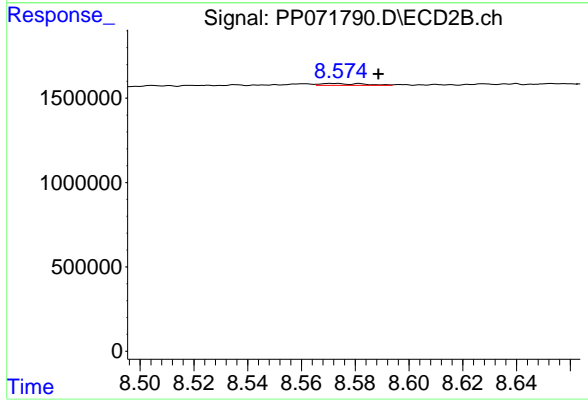
R.T.: 8.312 min
 Delta R.T.: 0.024 min
 Response: 55705
 Conc: 0.92 ng/ml



#45 AR-1268-5

R.T.: 9.884 min
 Delta R.T.: -0.010 min
 Response: 592567
 Conc: 0.99 ng/ml

Instrument :
 ECD_P
 ClientSampleId :
 CLEAN-FILL



#45 AR-1268-5

R.T.: 8.572 min
 Delta R.T.: -0.017 min
 Response: 120587
 Conc: 0.32 ng/ml