

Data Path : Z:\pestpcbsrv\HPCHEM1\ECD_P\Data\PP050621\
 Data File : PP035604.D
 Signal(s) : Signal #1: ECD1A.CH Signal #2: ECD2B.CH
 Acq On : 06 May 2021 14:20
 Operator : DD\AJ
 Sample : M2255-01
 Misc :
 ALS Vial : 10 Sample Multiplier: 1

Instrument :
 ECD_P
 ClientSampleId :
 OK-01-050321

Integration File signal 1: autoint1.e
 Integration File signal 2: autoint2.e
 Quant Time: May 07 09:48:54 2021
 Quant Method : Z:\pestpcbsrv\HPCHEM1\ECD_P\methods\PP050521.M
 Quant Title : GC EXTRACTABLES
 QLast Update : Thu May 06 11:27:40 2021
 Response via : Initial Calibration
 Integrator: ChemStation 6890 Scale Mode: Small noise peaks clipped

Volume Inj. : 2 µl
 Signal #1 Phase : ZB-MR2 Signal #2 Phase: ZB-MR2
 Signal #1 Info : 30Mx0.32mmx 0.50µ Signal #2 Info : 30M x 0.32mm x 0.25µm

Compound	RT#1	RT#2	Resp#1	Resp#2	ng/ml	ng/ml

System Monitoring Compounds						
1) SA Tetrachlo...	4.784	4.203	961225	696826	21.970	22.971
2) SA Decachlor...	10.635	9.454	886234	400522	22.469	20.759
Target Compounds						
21) L5 AR-1248-1	6.089	5.444	99062	42021	118.973	79.199 #
22) L5 AR-1248-2	6.379	5.703	248710	170337	199.989	210.410
23) L5 AR-1248-3	6.595	5.747	219134	148986	144.370	173.316
24) L5 AR-1248-4	7.019	5.932	143565	154538	96.069	157.260 #
25) L5 AR-1248-5	7.060	6.350	219247	96978	148.445	106.801 #
26) L6 AR-1254-1	6.989	6.306	310146	252031	184.876	177.450
27) L6 AR-1254-2	7.217	6.462	378934	167315	150.423	132.844
28) L6 AR-1254-3	7.596	6.880	483657	349715	186.801	184.268
29) L6 AR-1254-4	7.890	7.115	297427	164509	174.100	149.537
30) L6 AR-1254-5	8.316	7.539	458129	351307	221.487	209.544

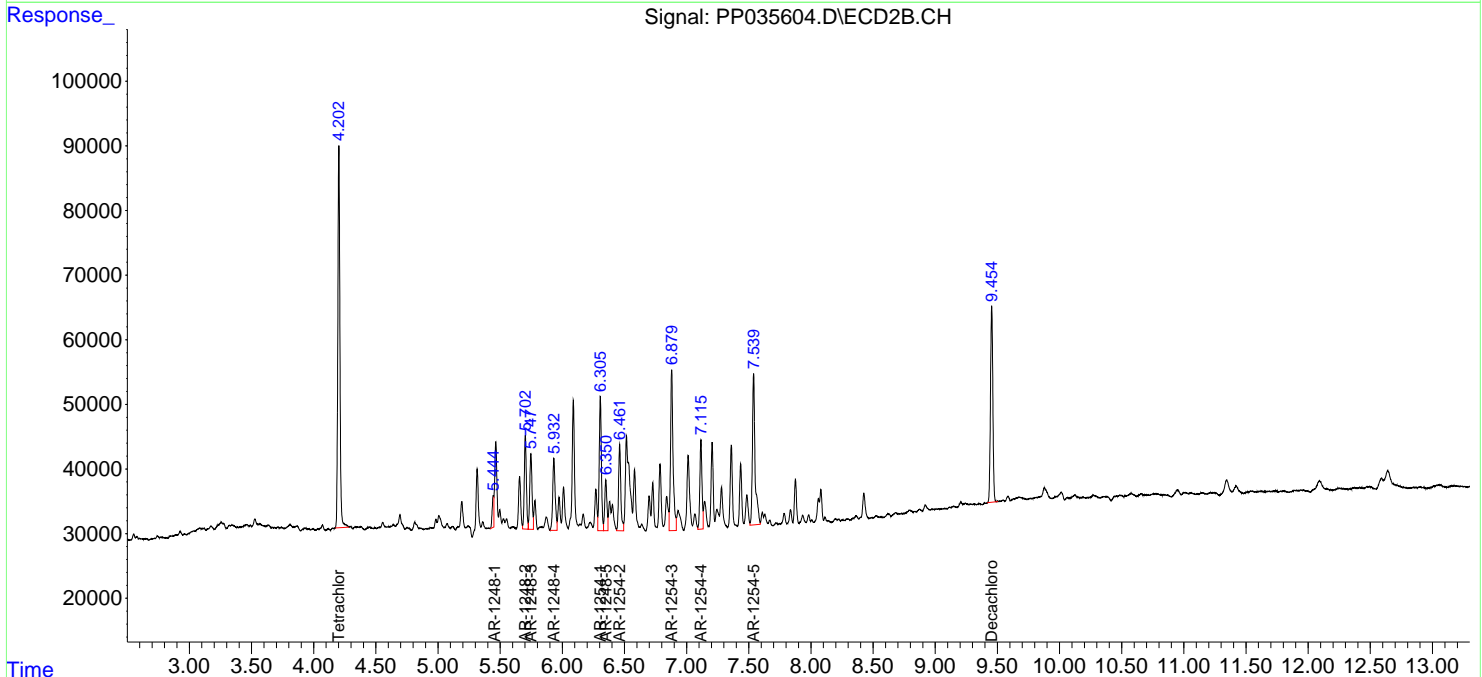
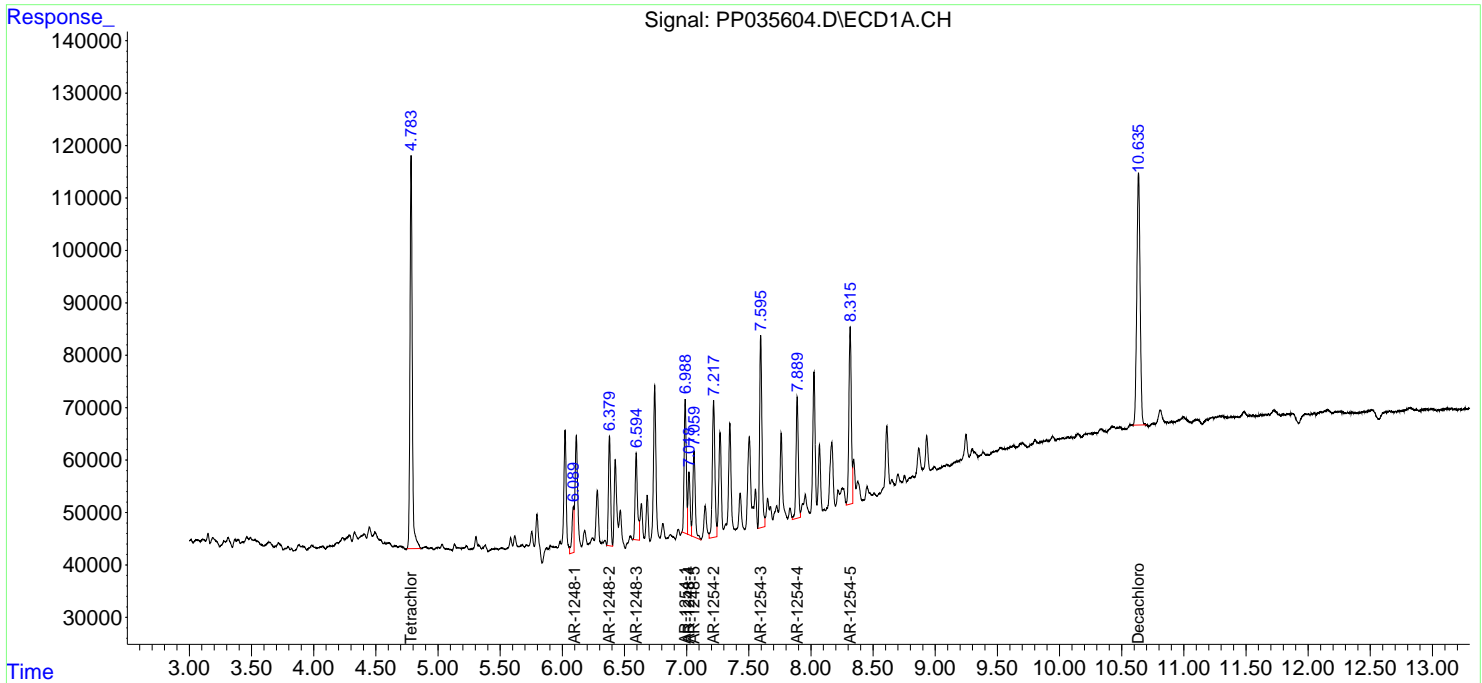
(f)=RT Delta > 1/2 Window (#)=Amounts differ by > 25% (m)=manual int.

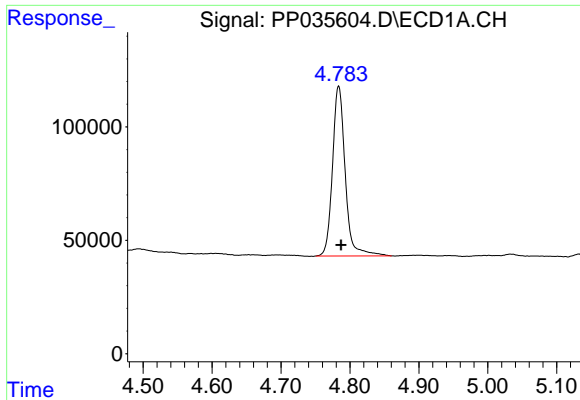
Data Path : Z:\pestpcbsrv\HPCHEM1\ECD_P\Data\PP050621\
 Data File : PP035604.D
 Signal(s) : Signal #1: ECD1A.CH Signal #2: ECD2B.CH
 Acq On : 06 May 2021 14:20
 Operator : DD\AJ
 Sample : M2255-01
 Misc :
 ALS Vial : 10 Sample Multiplier: 1

Instrument :
 ECD_P
 Client Sampled :
 OK-01-050321

Integration File signal 1: autoint1.e
 Integration File signal 2: autoint2.e
 Quant Time: May 07 09:48:54 2021
 Quant Method : Z:\pestpcbsrv\HPCHEM1\ECD_P\methods\PP050521.M
 Quant Title : GC EXTRACTABLES
 QLast Update : Thu May 06 11:27:40 2021
 Response via : Initial Calibration
 Integrator: ChemStation 6890 Scale Mode: Small noise peaks clipped

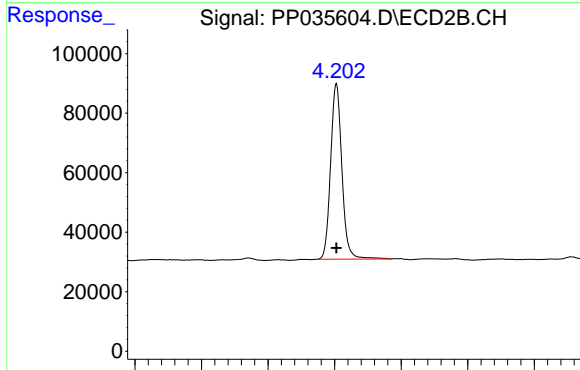
Volume Inj. : 2 µl
 Signal #1 Phase : ZB-MR1 Signal #2 Phase: ZB-MR2
 Signal #1 Info : 30Mx0.32mmx 0.50µ Signal #2 Info : 30M x 0.32mm x 0.25µm



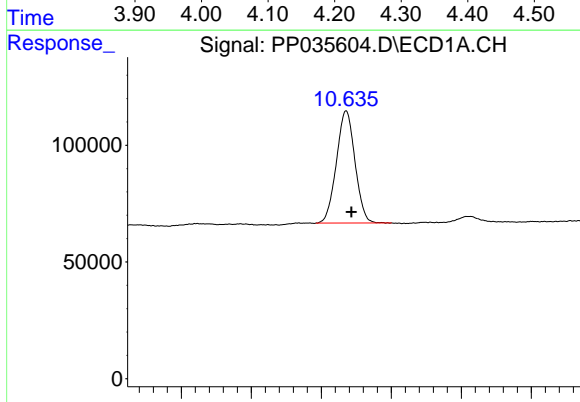


#1 Tetrachloro-m-xylene
 R.T.: 4.784 min
 Delta R.T.: -0.003 min
 Response: 961225
 Conc: 21.97 ng/ml

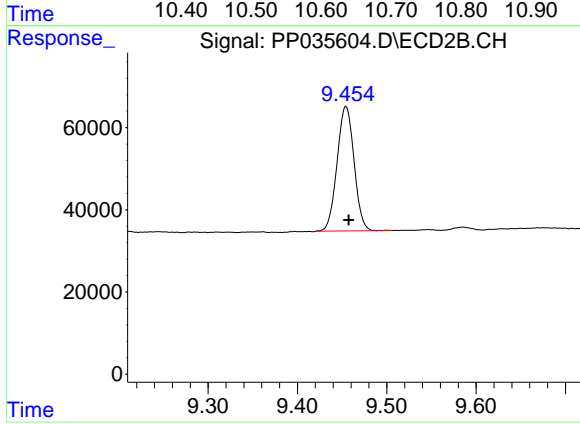
Instrument :
 ECD_P
 ClientSampleId :
 OK-01-050321



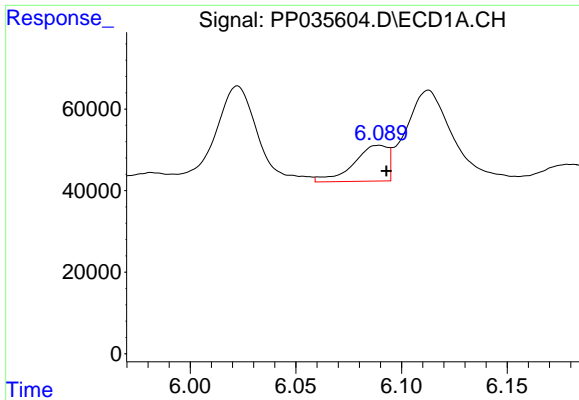
#1 Tetrachloro-m-xylene
 R.T.: 4.203 min
 Delta R.T.: 0.000 min
 Response: 696826
 Conc: 22.97 ng/ml



#2 Decachlorobiphenyl
 R.T.: 10.635 min
 Delta R.T.: -0.008 min
 Response: 886234
 Conc: 22.47 ng/ml



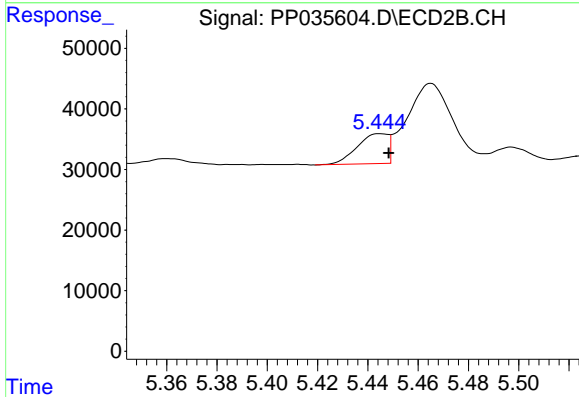
#2 Decachlorobiphenyl
 R.T.: 9.454 min
 Delta R.T.: -0.003 min
 Response: 400522
 Conc: 20.76 ng/ml



#21 AR-1248-1

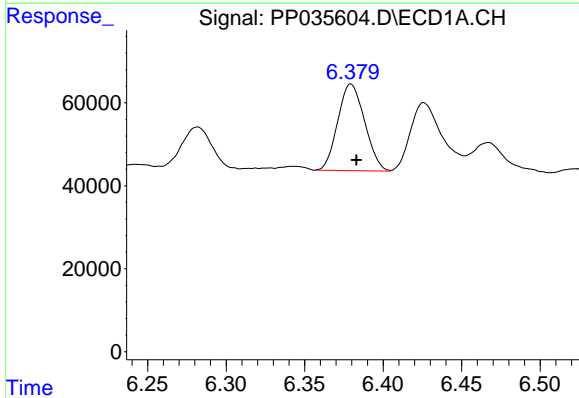
R.T.: 6.089 min
 Delta R.T.: -0.004 min
 Response: 99062
 Conc: 118.97 ng/ml

Instrument :
 ECD_P
 ClientSampleId :
 OK-01-050321



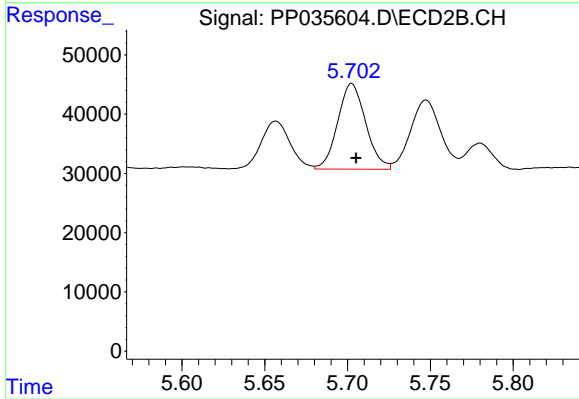
#21 AR-1248-1

R.T.: 5.444 min
 Delta R.T.: -0.004 min
 Response: 42021
 Conc: 79.20 ng/ml



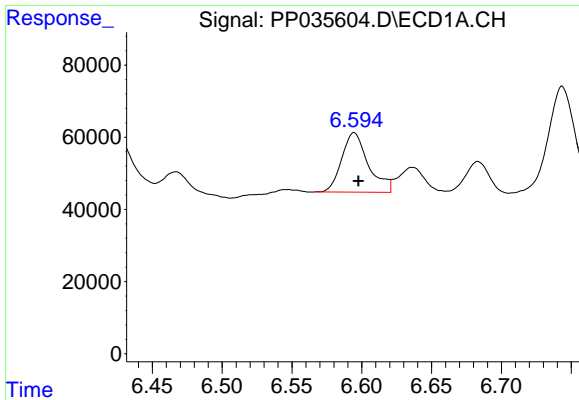
#22 AR-1248-2

R.T.: 6.379 min
 Delta R.T.: -0.003 min
 Response: 248710
 Conc: 199.99 ng/ml



#22 AR-1248-2

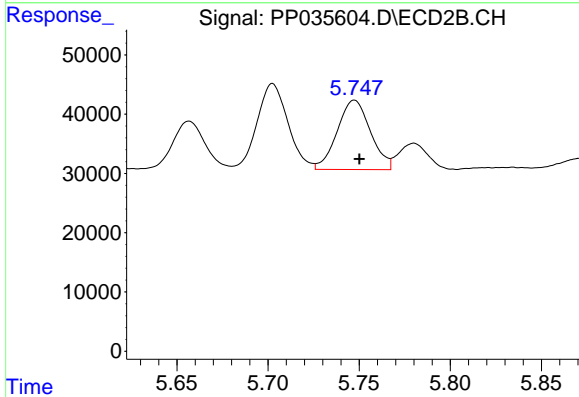
R.T.: 5.703 min
 Delta R.T.: -0.003 min
 Response: 170337
 Conc: 210.41 ng/ml



#23 AR-1248-3

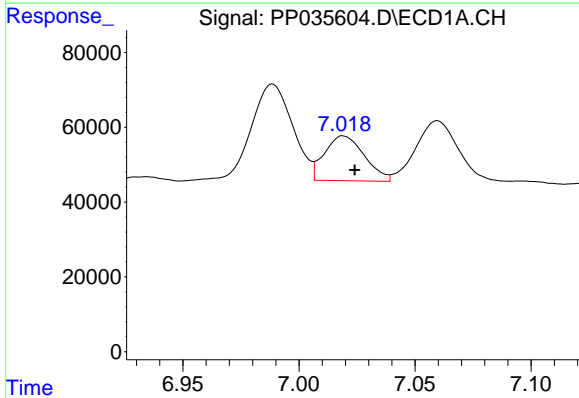
R.T.: 6.595 min
 Delta R.T.: -0.003 min
 Response: 219134
 Conc: 144.37 ng/ml

Instrument :
 ECD_P
 ClientSampleId :
 OK-01-050321



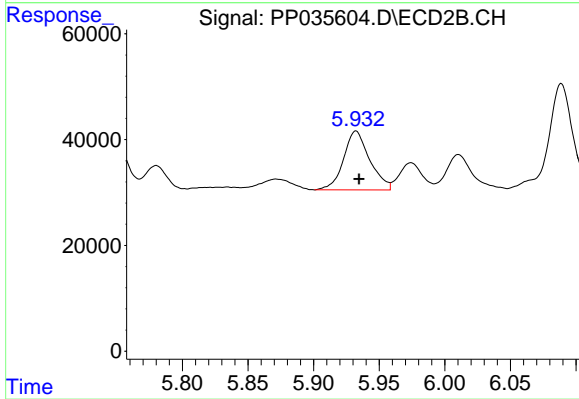
#23 AR-1248-3

R.T.: 5.747 min
 Delta R.T.: -0.003 min
 Response: 148986
 Conc: 173.32 ng/ml



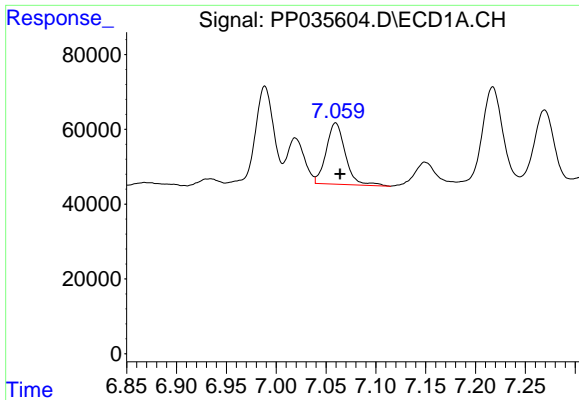
#24 AR-1248-4

R.T.: 7.019 min
 Delta R.T.: -0.005 min
 Response: 143565
 Conc: 96.07 ng/ml



#24 AR-1248-4

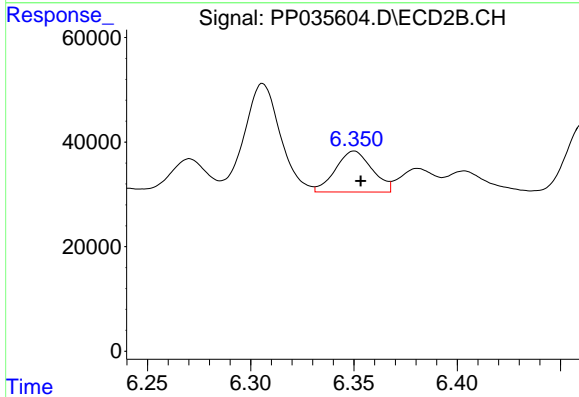
R.T.: 5.932 min
 Delta R.T.: -0.002 min
 Response: 154538
 Conc: 157.26 ng/ml



#25 AR-1248-5

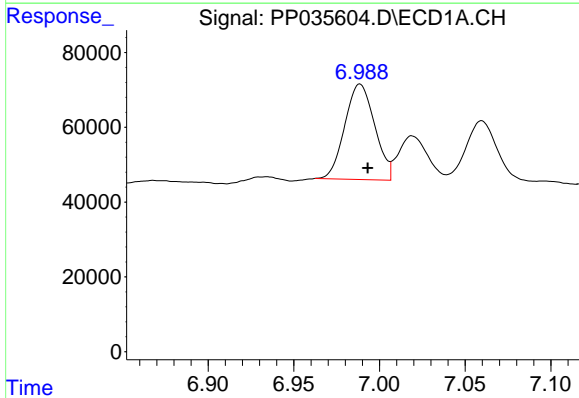
R.T.: 7.060 min
 Delta R.T.: -0.004 min
 Response: 219247
 Conc: 148.44 ng/ml

Instrument :
 ECD_P
 ClientSampled :
 OK-01-050321



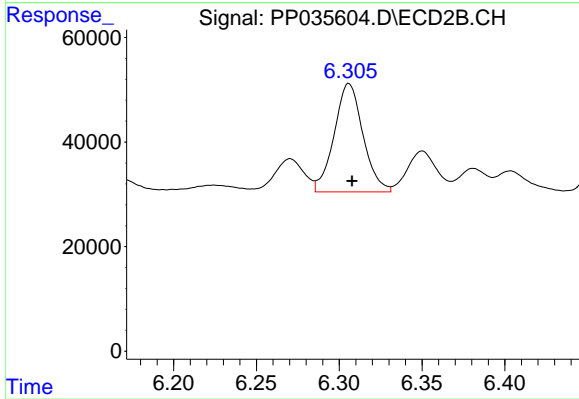
#25 AR-1248-5

R.T.: 6.350 min
 Delta R.T.: -0.003 min
 Response: 96978
 Conc: 106.80 ng/ml



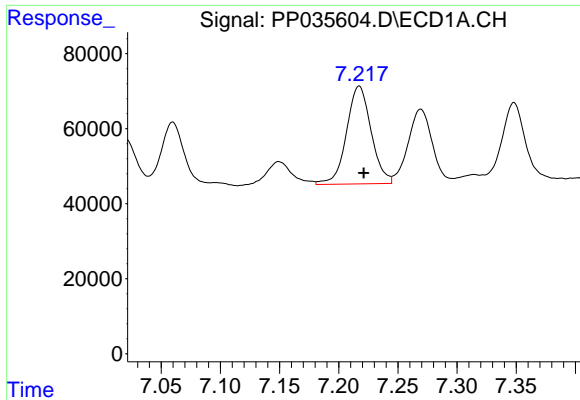
#26 AR-1254-1

R.T.: 6.989 min
 Delta R.T.: -0.005 min
 Response: 310146
 Conc: 184.88 ng/ml



#26 AR-1254-1

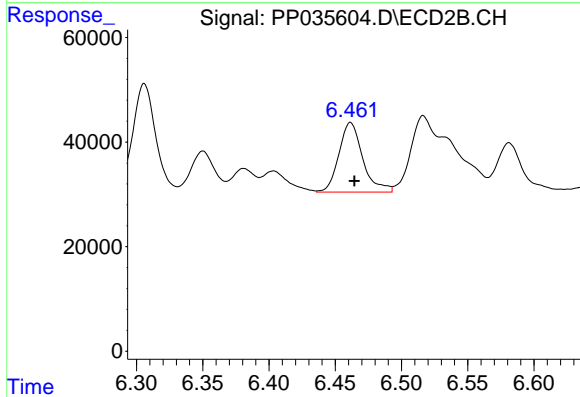
R.T.: 6.306 min
 Delta R.T.: -0.002 min
 Response: 252031
 Conc: 177.45 ng/ml



#27 AR-1254-2

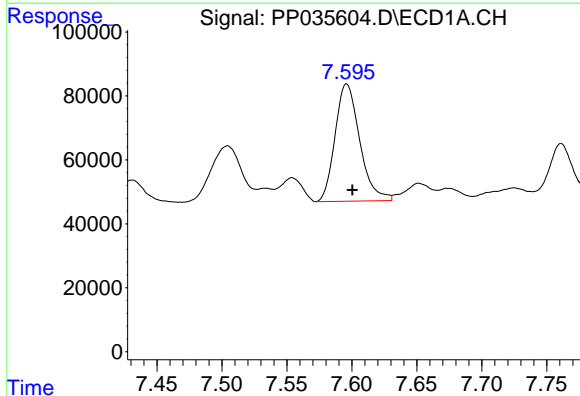
R.T.: 7.217 min
Delta R.T.: -0.004 min
Response: 378934
Conc: 150.42 ng/ml

Instrument :
ECD_P
ClientSampleId :
OK-01-050321



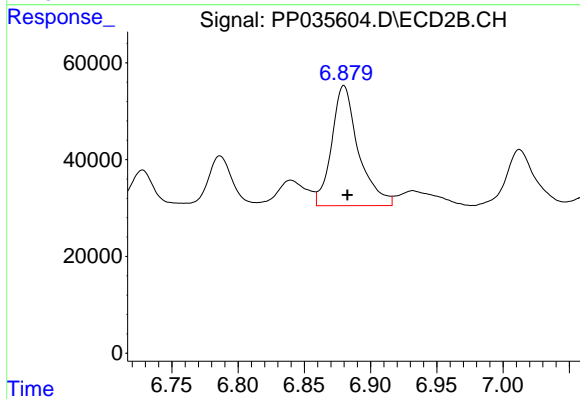
#27 AR-1254-2

R.T.: 6.462 min
Delta R.T.: -0.003 min
Response: 167315
Conc: 132.84 ng/ml



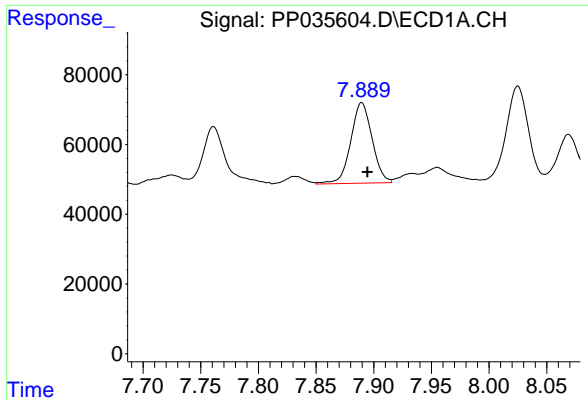
#28 AR-1254-3

R.T.: 7.596 min
Delta R.T.: -0.004 min
Response: 483657
Conc: 186.80 ng/ml



#28 AR-1254-3

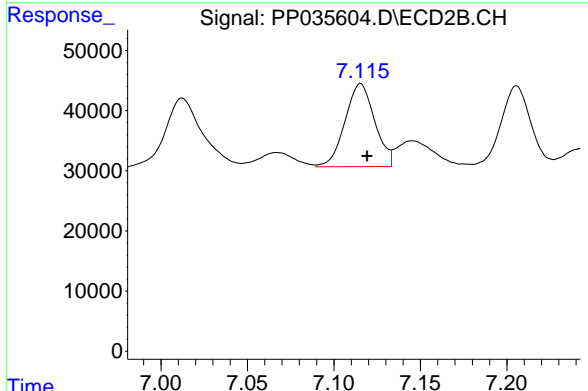
R.T.: 6.880 min
Delta R.T.: -0.003 min
Response: 349715
Conc: 184.27 ng/ml



#29 AR-1254-4

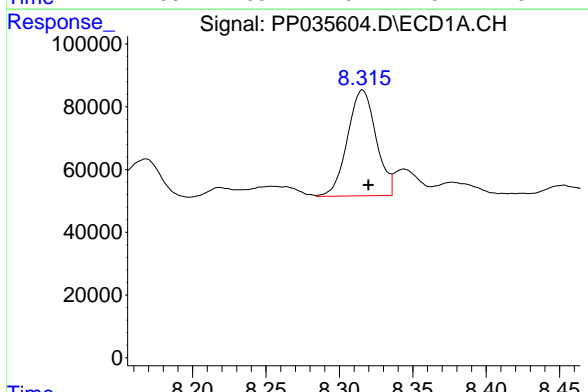
R.T.: 7.890 min
 Delta R.T.: -0.005 min
 Response: 297427
 Conc: 174.10 ng/ml

Instrument :
 ECD_P
 ClientSampleId :
 OK-01-050321



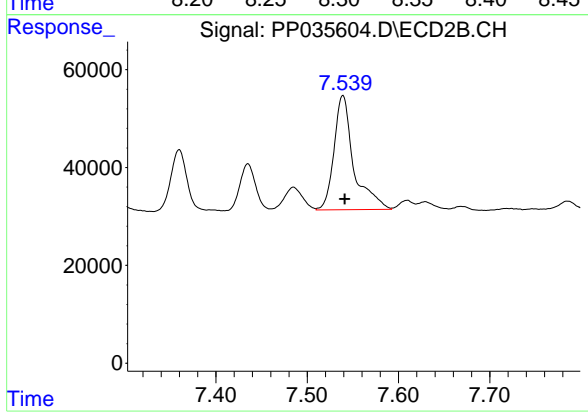
#29 AR-1254-4

R.T.: 7.115 min
 Delta R.T.: -0.004 min
 Response: 164509
 Conc: 149.54 ng/ml



#30 AR-1254-5

R.T.: 8.316 min
 Delta R.T.: -0.004 min
 Response: 458129
 Conc: 221.49 ng/ml



#30 AR-1254-5

R.T.: 7.539 min
 Delta R.T.: -0.002 min
 Response: 351307
 Conc: 209.54 ng/ml