

Data Path : Z:\pestpcbsrv\HPCHEM1\ECD\_P\Data\PP050621\  
 Data File : PP035650.D  
 Signal(s) : Signal #1: ECD1A.CH Signal #2: ECD2B.CH  
 Acq On : 07 May 2021 4:04  
 Operator : DD\AJ  
 Sample : M2273-07 10X  
 Misc :  
 ALS Vial : 39 Sample Multiplier: 1

Instrument :  
 ECD\_P  
 ClientSampleId :  
 HED160B-4-1

Integration File signal 1: autoint1.e  
 Integration File signal 2: autoint2.e  
 Quant Time: May 07 04:52:46 2021  
 Quant Method : Z:\pestpcbsrv\HPCHEM1\ECD\_P\methods\PP050521.M  
 Quant Title : GC EXTRACTABLES  
 QLast Update : Thu May 06 11:27:40 2021  
 Response via : Initial Calibration  
 Integrator: ChemStation 6890 Scale Mode: Small noise peaks clipped

Volume Inj. : 2 µl  
 Signal #1 Phase : ZB-MR1 Signal #2 Phase: ZB-MR2  
 Signal #1 Info : 30Mx0.32mmx 0.50µ Signal #2 Info : 30M x 0.32mm x 0.25µm

Compound	RT#1	RT#2	Resp#1	Resp#2	ng/ml	ng/ml
-----						
System Monitoring Compounds						
1) SA Tetrachlo...	4.783	4.202	90459	73674	2.068	2.429
2) SA Decachlor...	10.633	9.453	93837	45187	2.379	2.342

Target Compounds

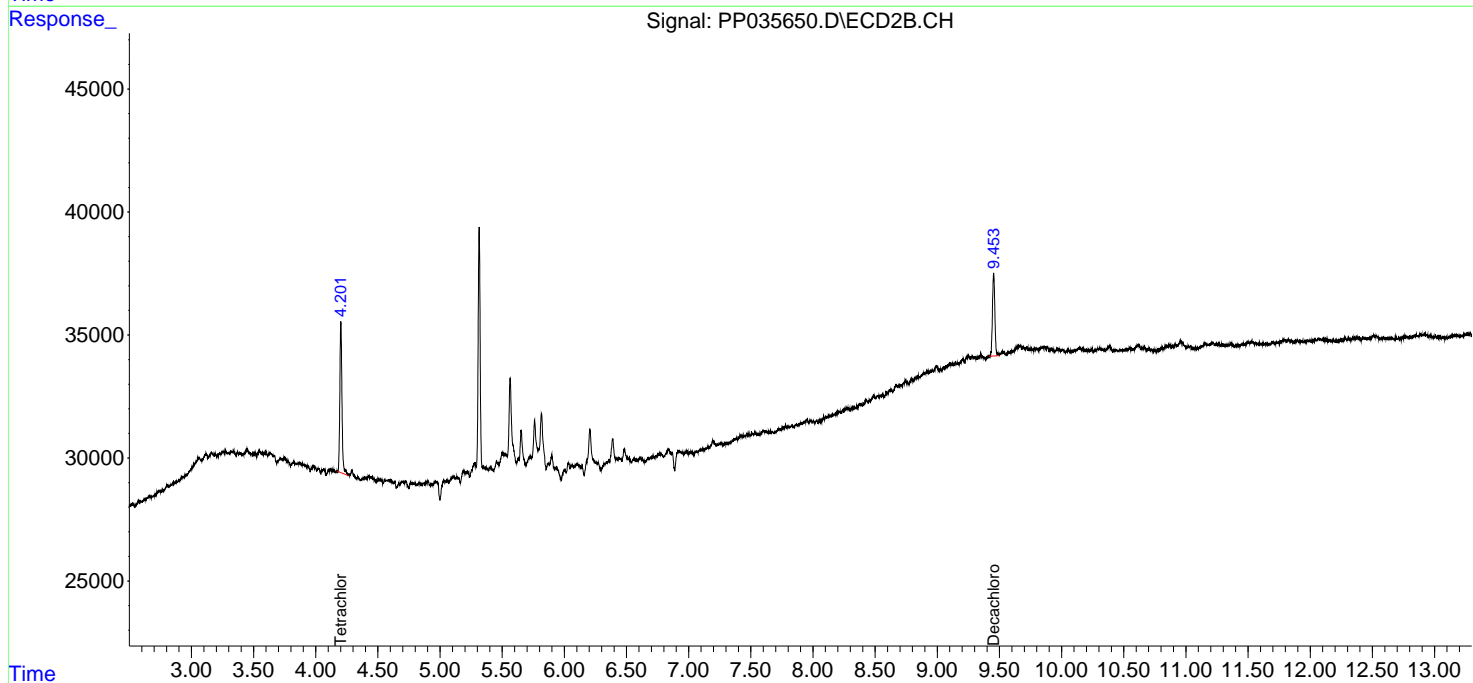
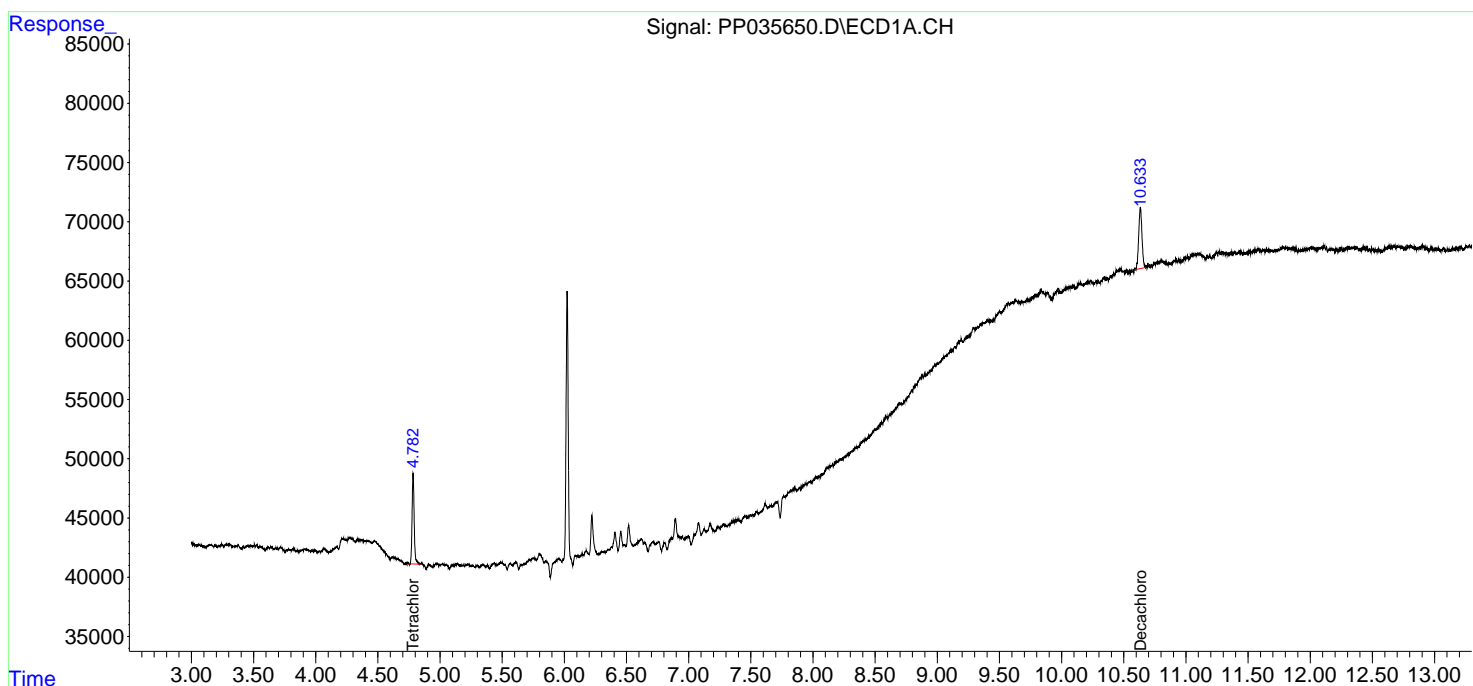
(f)=RT Delta > 1/2 Window (#)=Amounts differ by > 25% (m)=manual int.

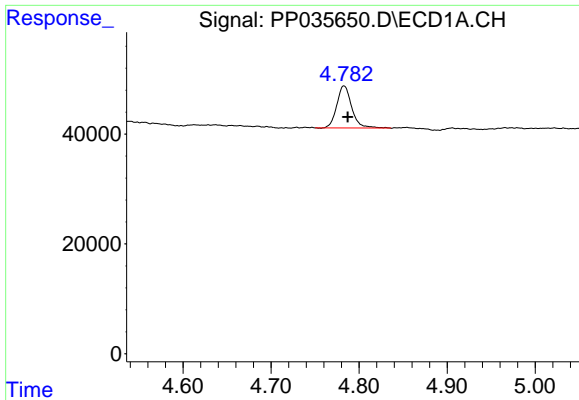
Data Path : Z:\pestpcbsrv\HPCHEM1\ECD\_P\Data\PP050621\  
 Data File : PP035650.D  
 Signal(s) : Signal #1: ECD1A.CH Signal #2: ECD2B.CH  
 Acq On : 07 May 2021 4:04  
 Operator : DD\AJ  
 Sample : M2273-07 10X  
 Misc :  
 ALS Vial : 39 Sample Multiplier: 1

Instrument :  
 ECD\_P  
 ClientSampleId :  
 HED160B-4-1

Integration File signal 1: autoint1.e  
 Integration File signal 2: autoint2.e  
 Quant Time: May 07 04:52:46 2021  
 Quant Method : Z:\pestpcbsrv\HPCHEM1\ECD\_P\methods\PP050521.M  
 Quant Title : GC EXTRACTABLES  
 QLast Update : Thu May 06 11:27:40 2021  
 Response via : Initial Calibration  
 Integrator: ChemStation 6890 Scale Mode: Small noise peaks clipped

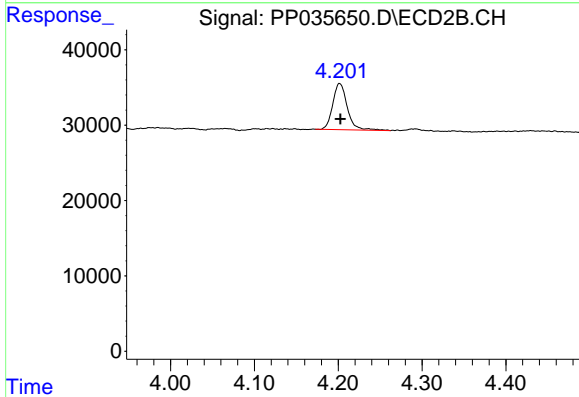
Volume Inj. : 2 µl  
 Signal #1 Phase : ZB-MR1 Signal #2 Phase: ZB-MR2  
 Signal #1 Info : 30Mx0.32mmx 0.50µ Signal #2 Info : 30M x 0.32mm x 0.25µm



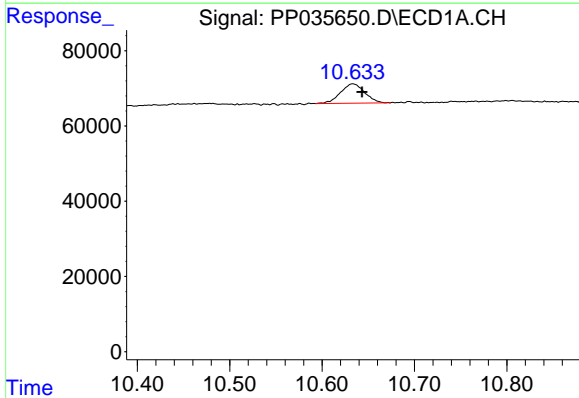


#1 Tetrachloro-m-xylene  
 R.T.: 4.783 min  
 Delta R.T.: -0.004 min  
 Response: 90459  
 Conc: 2.07 ng/ml

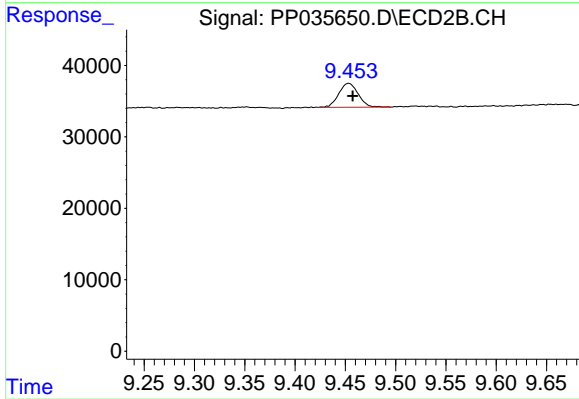
Instrument :  
 ECD\_P  
 ClientSampleId :  
 HED160B-4-1



#1 Tetrachloro-m-xylene  
 R.T.: 4.202 min  
 Delta R.T.: -0.001 min  
 Response: 73674  
 Conc: 2.43 ng/ml



#2 Decachlorobiphenyl  
 R.T.: 10.633 min  
 Delta R.T.: -0.010 min  
 Response: 93837  
 Conc: 2.38 ng/ml



#2 Decachlorobiphenyl  
 R.T.: 9.453 min  
 Delta R.T.: -0.004 min  
 Response: 45187  
 Conc: 2.34 ng/ml