

Data Path : Z:\pestpcbsrv\HPCHEM1\ECD\_P\Data\PP050622\  
 Data File : PP047169.D  
 Signal(s) : Signal #1: ECD1A.ch Signal #2: ECD2B.ch  
 Acq On : 08 May 2022 00:02  
 Operator : YP\AJ  
 Sample : N2677-08  
 Misc :  
 ALS Vial : 43 Sample Multiplier: 1

Instrument :  
 ECD\_P  
 ClientSampleId :  
 SB-3,13

Integration File signal 1: autoint1.e  
 Integration File signal 2: autoint2.e  
 Quant Time: May 08 23:19:18 2022  
 Quant Method : Z:\pestpcbsrv\HPCHEM1\ECD\_P\methods\PP042222.M  
 Quant Title : GC EXTRACTABLES  
 QLast Update : Fri May 06 10:17:17 2022  
 Response via : Initial Calibration  
 Integrator: ChemStation

Volume Inj. : 2 µl  
 Signal #1 Phase : ZB-MR1 Signal #2 Phase: ZB-MR2  
 Signal #1 Info : 30Mx0.32mmx 0.50µ Signal #2 Info : 30M x 0.32mm x 0.25µm

Compound	RT#1	RT#2	Resp#1	Resp#2	ng/ml	ng/ml
-----						
System Monitoring Compounds						
1) SA Tetrachlo...	3.853	3.119	60642690	84849464	25.122	25.866
2) SA Decachlor...	9.919	8.428	35576914	65679984	24.177	27.535

Target Compounds

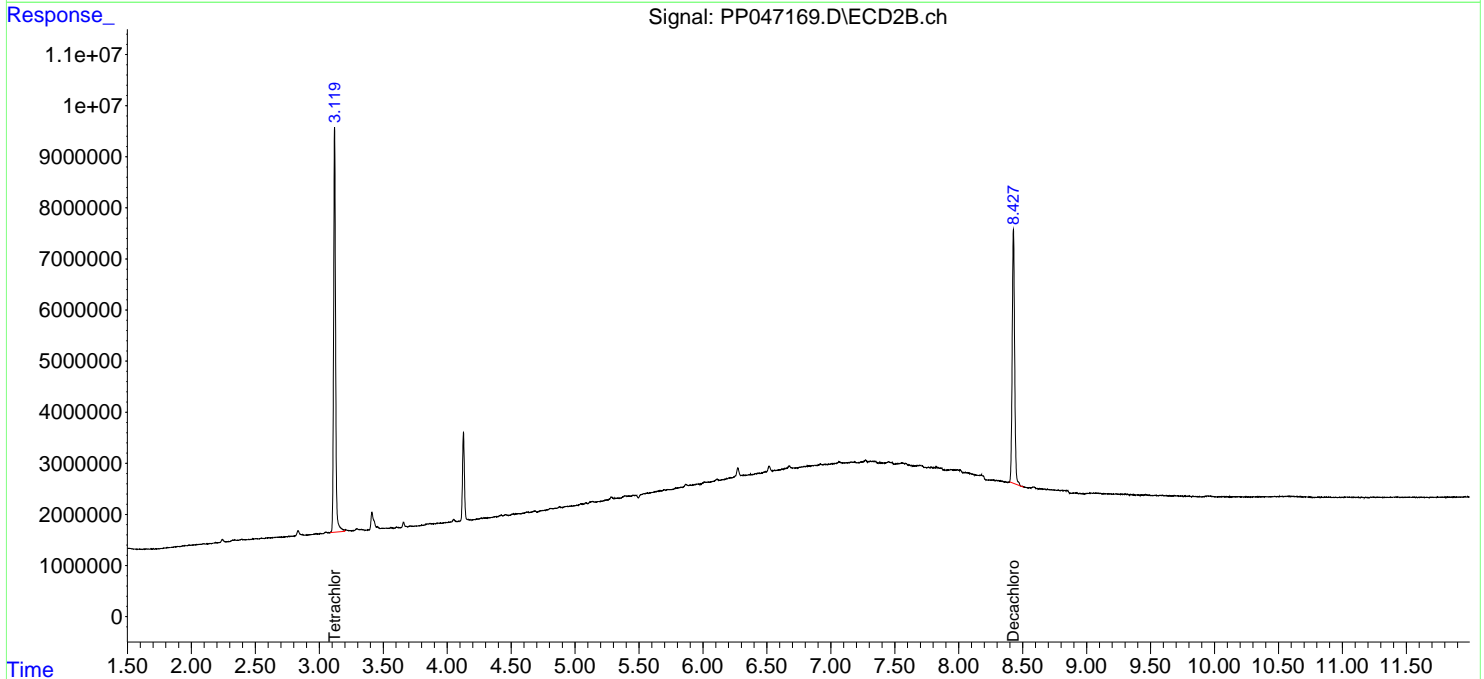
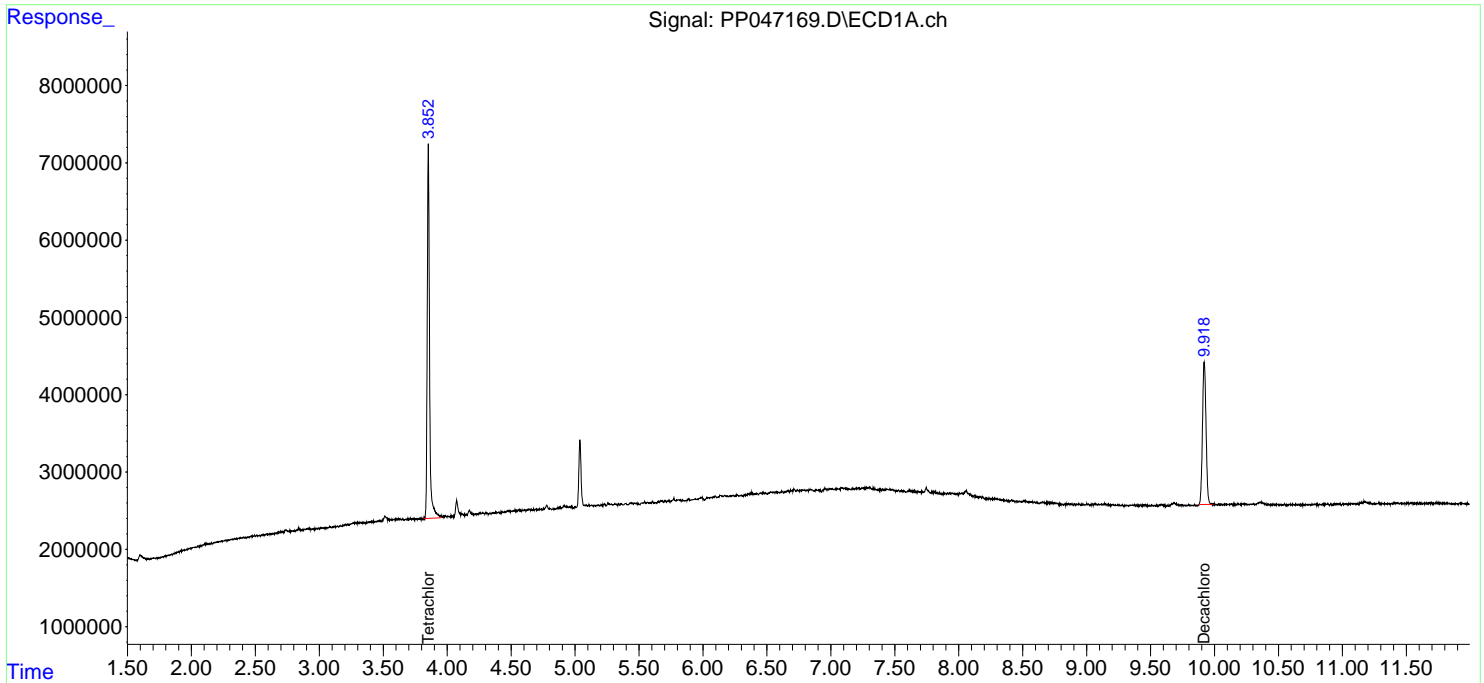
(f)=RT Delta > 1/2 Window (#)=Amounts differ by > 25% (m)=manual int.

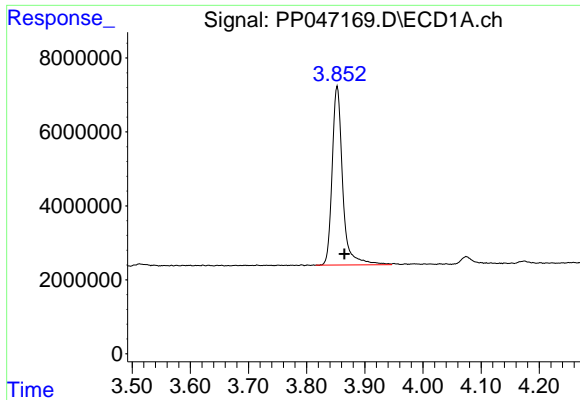
Data Path : Z:\pestpcbsrv\HPCHEM1\ECD\_P\Data\PP050622\  
 Data File : PP047169.D  
 Signal(s) : Signal #1: ECD1A.ch Signal #2: ECD2B.ch  
 Acq On : 08 May 2022 00:02  
 Operator : YP\AJ  
 Sample : N2677-08  
 Misc :  
 ALS Vial : 43 Sample Multiplier: 1

Instrument :  
 ECD\_P  
 ClientSampleId :  
 SB-3,13

Integration File signal 1: autoint1.e  
 Integration File signal 2: autoint2.e  
 Quant Time: May 08 23:19:18 2022  
 Quant Method : Z:\pestpcbsrv\HPCHEM1\ECD\_P\methods\PP042222.M  
 Quant Title : GC EXTRACTABLES  
 QLast Update : Fri May 06 10:17:17 2022  
 Response via : Initial Calibration  
 Integrator: ChemStation

Volume Inj. : 2 µl  
 Signal #1 Phase : ZB-MR1 Signal #2 Phase: ZB-MR2  
 Signal #1 Info : 30Mx0.32mmx 0.50µ Signal #2 Info : 30M x 0.32mm x 0.25µm

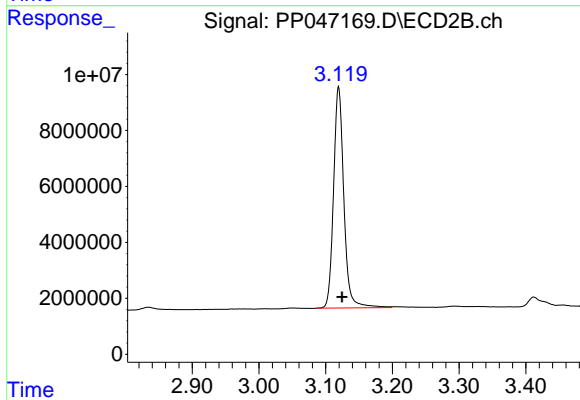




#1 Tetrachloro-m-xylene

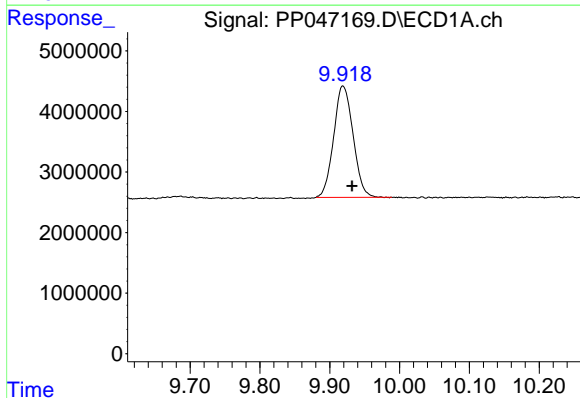
R.T.: 3.853 min  
 Delta R.T.: -0.012 min  
 Response: 60642690  
 Conc: 25.12 ng/ml

Instrument :  
 ECD\_P  
 ClientSampleId :  
 SB-3,13



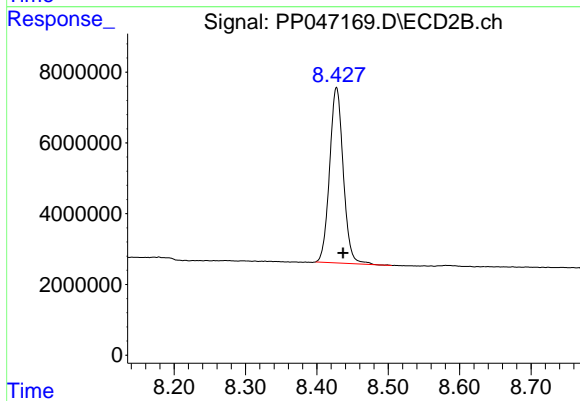
#1 Tetrachloro-m-xylene

R.T.: 3.119 min  
 Delta R.T.: -0.005 min  
 Response: 84849464  
 Conc: 25.87 ng/ml



#2 Decachlorobiphenyl

R.T.: 9.919 min  
 Delta R.T.: -0.013 min  
 Response: 35576914  
 Conc: 24.18 ng/ml



#2 Decachlorobiphenyl

R.T.: 8.428 min  
 Delta R.T.: -0.009 min  
 Response: 65679984  
 Conc: 27.54 ng/ml