

Data Path : Z:\pestpcbsrv\HPCHEM1\ECD_P\Data\PP050625\
 Data File : PP071815.D
 Signal(s) : Signal #1: ECD1A.ch Signal #2: ECD2B.ch
 Acq On : 06 May 2025 16:30
 Operator : YP\AJ
 Sample : AR1660CCC500
 Misc :
 ALS Vial : 3 Sample Multiplier: 1

Instrument :
 ECD_P
ClientSampleId :
 AR1660CCC500

Manual Integrations
APPROVED
 Reviewed By :Yogesh Patel 05/07/2025
 Supervised By :mohammad ahmed 05/08/2025

Integration File signal 1: autoint1.e
 Integration File signal 2: autoint2.e
 Quant Time: May 07 01:40:58 2025
 Quant Method : Z:\pestpcbsrv\HPCHEM1\ECD_P\methods\PP042225.M
 Quant Title : GC EXTRACTABLES
 QLast Update : Wed Apr 23 05:02:06 2025
 Response via : Initial Calibration
 Integrator: ChemStation

Volume Inj. : 2 µl
 Signal #1 Phase : ZB-MR1 Signal #2 Phase: ZB-MR2
 Signal #1 Info : 30Mx0.32mmx 0.50µ Signal #2 Info : 30M x 0.32mm x 0.25µm

Compound	RT#1	RT#2	Resp#1	Resp#2	ng/ml	ng/ml

System Monitoring Compounds						
1) SA Tetrachlo...	4.508	3.806	89710355	67551123	45.248	47.955
2) SA Decachlor...	10.224	8.835	68726979	44543238	47.463	50.787
Target Compounds						
3) L1 AR-1016-1	5.662	4.890	30134830	26243550	449.439	490.226m
4) L1 AR-1016-2	5.683	4.907	45785537	35862949	446.130	469.633m
5) L1 AR-1016-3	5.746	5.085	27460141	20379267	445.441	482.802
6) L1 AR-1016-4	5.843	5.127	22947688	16279072	447.339	472.050
7) L1 AR-1016-5	6.135	5.341	21702875	22808461	449.909	513.158
31) L7 AR-1260-1	7.255	6.375	45742505	37144060	476.362	513.755
32) L7 AR-1260-2	7.508	6.563	67323308	44176811	470.538	505.101
33) L7 AR-1260-3	7.866	6.716	51535610	41733369	459.712	532.398
34) L7 AR-1260-4	8.091	7.187	49783747	31464383	441.092	498.559
35) L7 AR-1260-5	8.411	7.429	104.2E6	73824138	459.967	489.624

(f)=RT Delta > 1/2 Window (#)=Amounts differ by > 25% (m)=manual int.

Data Path : Z:\pestpcbsrv\HPCHEM1\ECD_P\Data\PP050625\
 Data File : PP071815.D
 Signal(s) : Signal #1: ECD1A.ch Signal #2: ECD2B.ch
 Acq On : 06 May 2025 16:30
 Operator : YP\AJ
 Sample : AR1660CCC500
 Misc :
 ALS Vial : 3 Sample Multiplier: 1

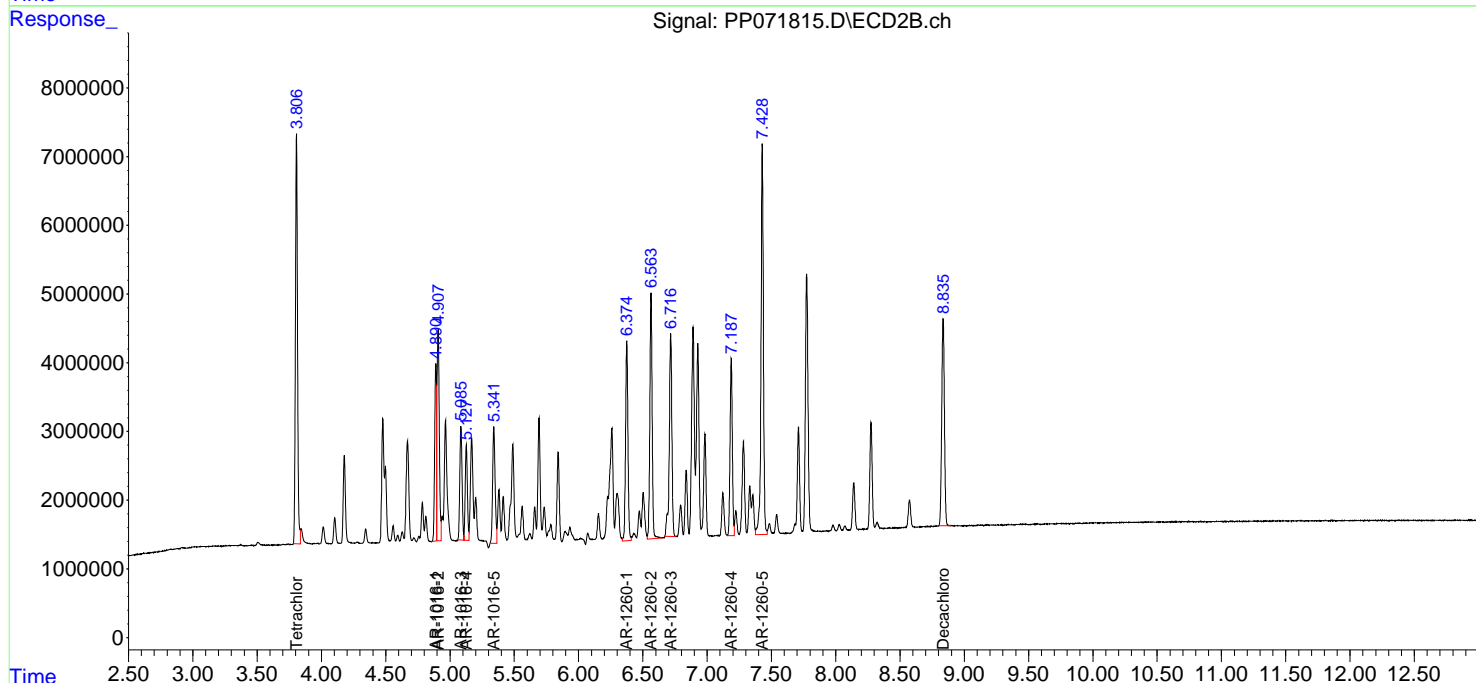
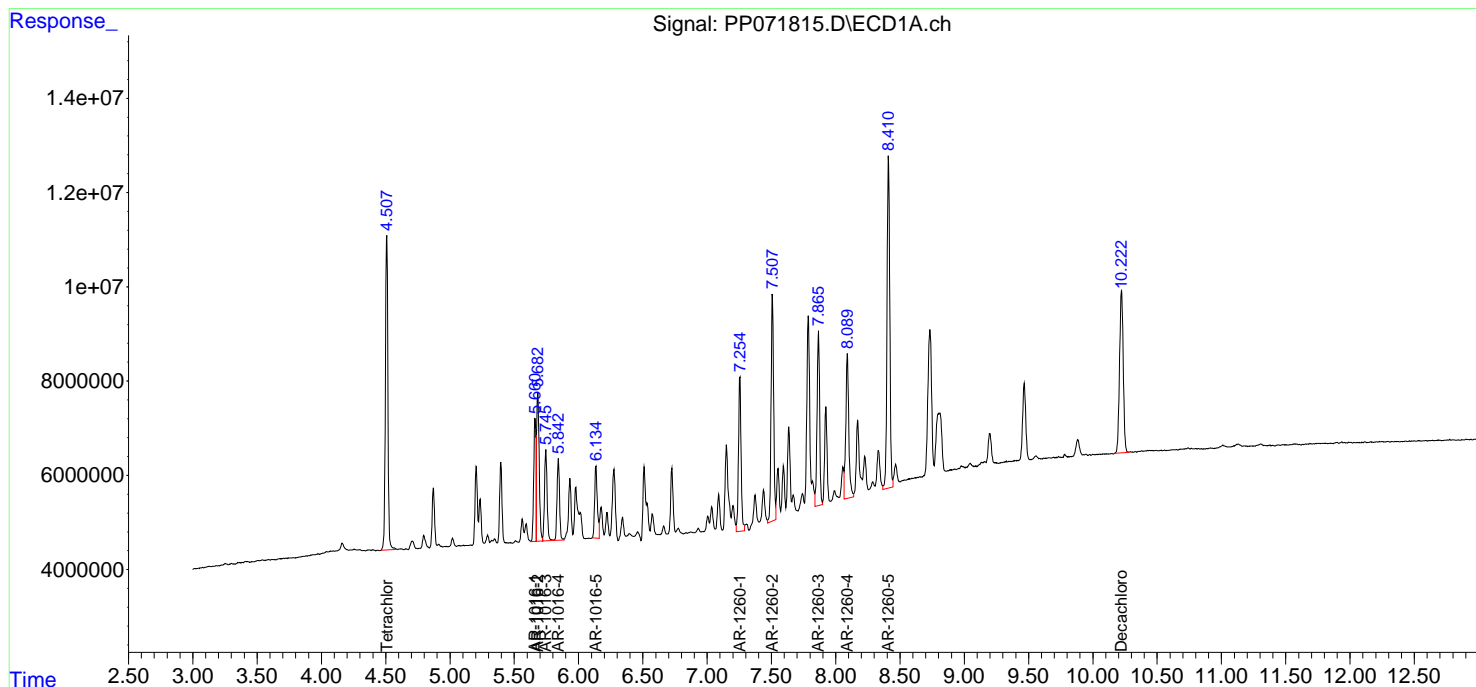
Instrument :
 ECD_P
 ClientSampleId :
 AR1660CCC500

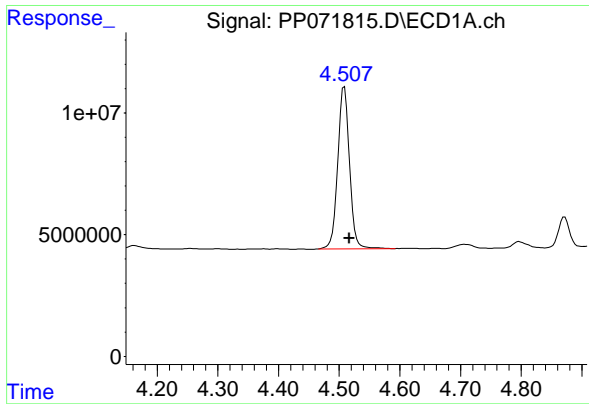
Manual Integrations
 APPROVED

Reviewed By :Yogesh Patel 05/07/2025
 Supervised By :mohammad ahmed 05/08/2025

Integration File signal 1: autoint1.e
 Integration File signal 2: autoint2.e
 Quant Time: May 07 01:40:58 2025
 Quant Method : Z:\pestpcbsrv\HPCHEM1\ECD_P\methods\PP042225.M
 Quant Title : GC EXTRACTABLES
 QLast Update : Wed Apr 23 05:02:06 2025
 Response via : Initial Calibration
 Integrator: ChemStation

Volume Inj. : 2 µl
 Signal #1 Phase : ZB-MR1 Signal #2 Phase: ZB-MR2
 Signal #1 Info : 30Mx0.32mmx 0.50µ Signal #2 Info : 30M x 0.32mm x 0.25µm





#1 Tetrachloro-m-xylene

R.T.: 4.508 min
 Delta R.T.: -0.009 min
 Response: 89710355
 Conc: 45.25 ng/ml

Instrument :

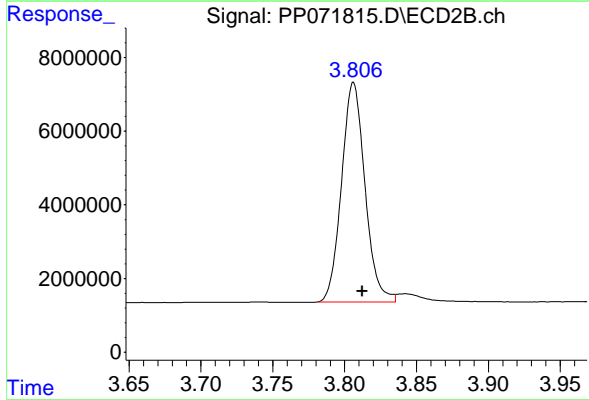
ECD_P

Client Sample Id :

AR1660CCC500

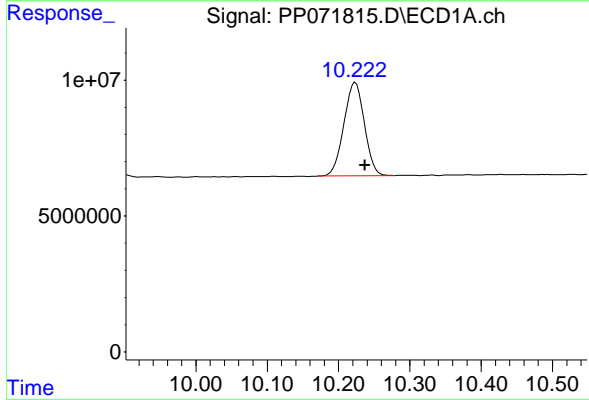
Manual Integrations
 APPROVED

Reviewed By :Yogesh Patel 05/07/2025
 Supervised By :mohammad ahmed 05/08/2025



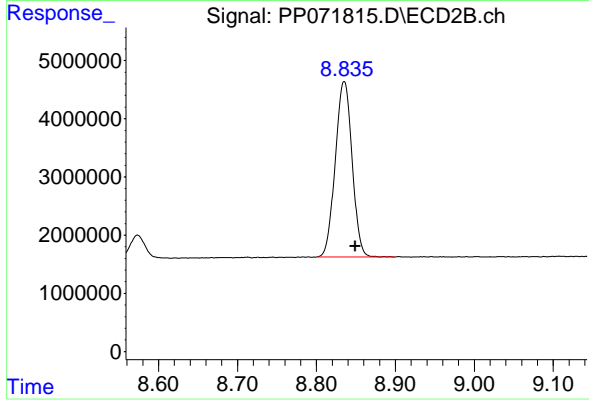
#1 Tetrachloro-m-xylene

R.T.: 3.806 min
 Delta R.T.: -0.006 min
 Response: 67551123
 Conc: 47.95 ng/ml



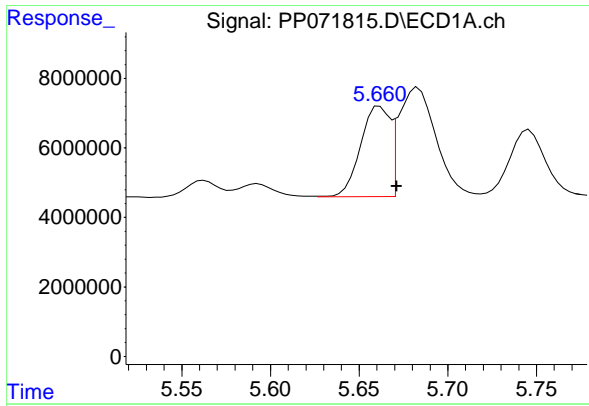
#2 Decachlorobiphenyl

R.T.: 10.224 min
 Delta R.T.: -0.014 min
 Response: 68726979
 Conc: 47.46 ng/ml



#2 Decachlorobiphenyl

R.T.: 8.835 min
 Delta R.T.: -0.014 min
 Response: 44543238
 Conc: 50.79 ng/ml



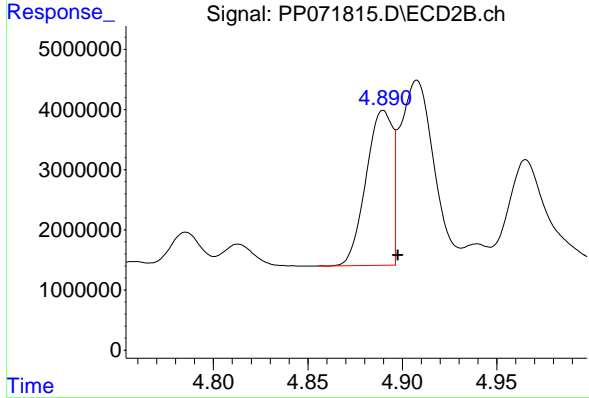
#3 AR-1016-1

R.T.: 5.662 min
 Delta R.T.: -0.009 min
 Response: 30134830
 Conc: 449.44 ng/ml

Instrument : ECD_P
 ClientSampleId : AR1660CCC500

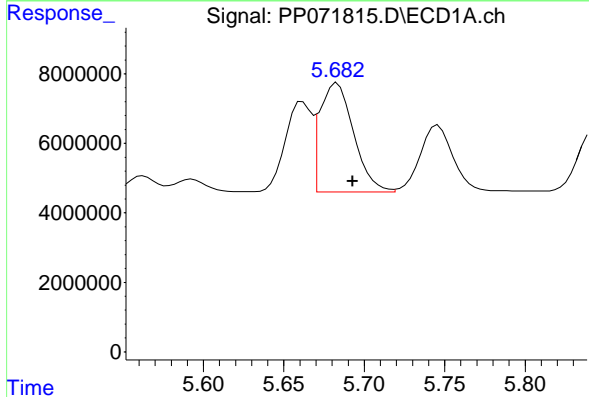
Manual Integrations
 APPROVED

Reviewed By :Yogesh Patel 05/07/2025
 Supervised By :mohammad ahmed 05/08/2025



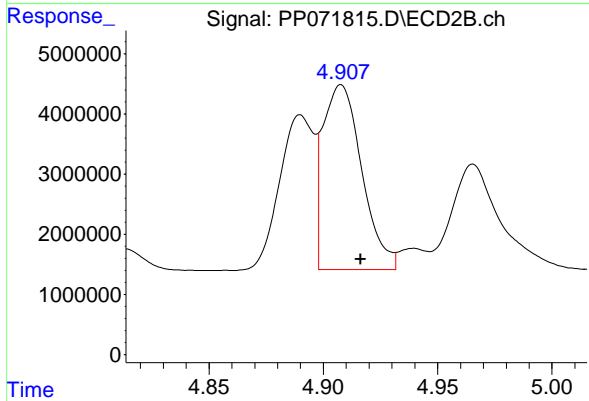
#3 AR-1016-1

R.T.: 4.890 min
 Delta R.T.: -0.008 min
 Response: 26243550
 Conc: 490.23 ng/ml m



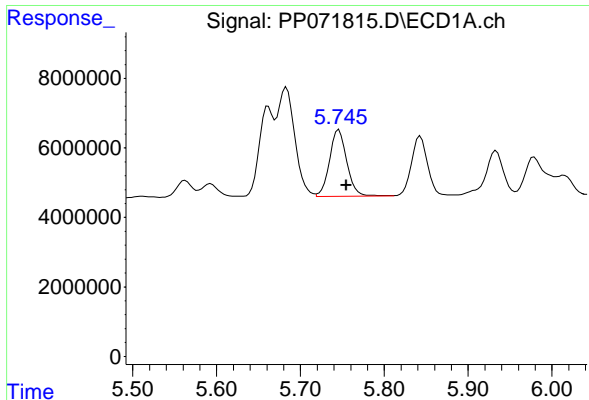
#4 AR-1016-2

R.T.: 5.683 min
 Delta R.T.: -0.010 min
 Response: 45785537
 Conc: 446.13 ng/ml



#4 AR-1016-2

R.T.: 4.907 min
 Delta R.T.: -0.009 min
 Response: 35862949
 Conc: 469.63 ng/ml m



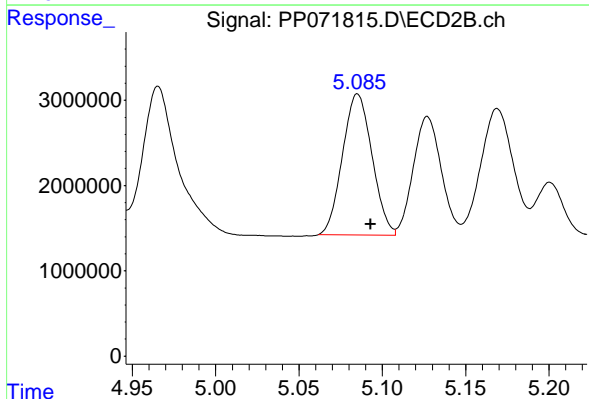
#5 AR-1016-3

R.T.: 5.746 min
 Delta R.T.: -0.009 min
 Response: 27460141
 Conc: 445.44 ng/ml

Instrument : ECD_P
 ClientSampleId : AR1660CCC500

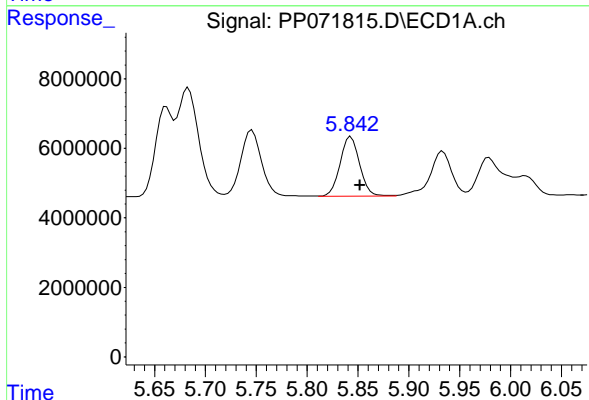
Manual Integrations
 APPROVED

Reviewed By :Yogesh Patel 05/07/2025
 Supervised By :mohammad ahmed 05/08/2025



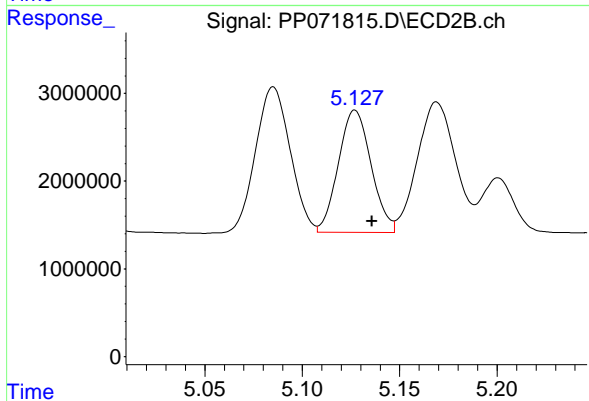
#5 AR-1016-3

R.T.: 5.085 min
 Delta R.T.: -0.008 min
 Response: 20379267
 Conc: 482.80 ng/ml



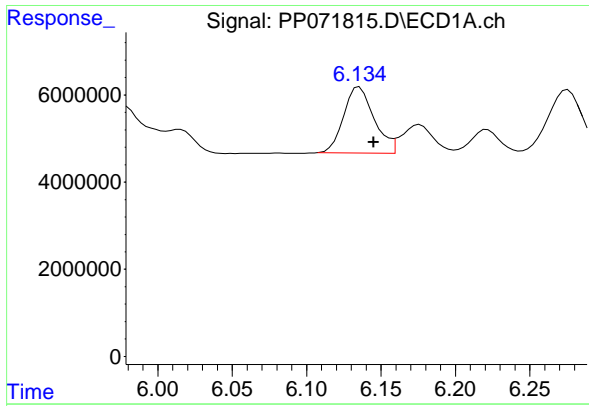
#6 AR-1016-4

R.T.: 5.843 min
 Delta R.T.: -0.009 min
 Response: 22947688
 Conc: 447.34 ng/ml



#6 AR-1016-4

R.T.: 5.127 min
 Delta R.T.: -0.009 min
 Response: 16279072
 Conc: 472.05 ng/ml



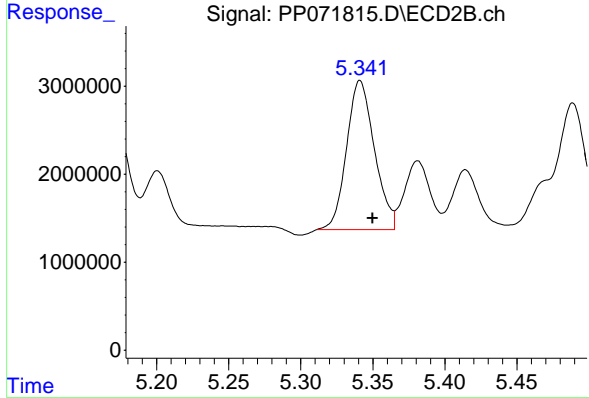
#7 AR-1016-5

R.T.: 6.135 min
 Delta R.T.: -0.010 min
 Response: 21702875
 Conc: 449.91 ng/ml

Instrument : ECD_P
 Client Sample Id : AR1660CCC500

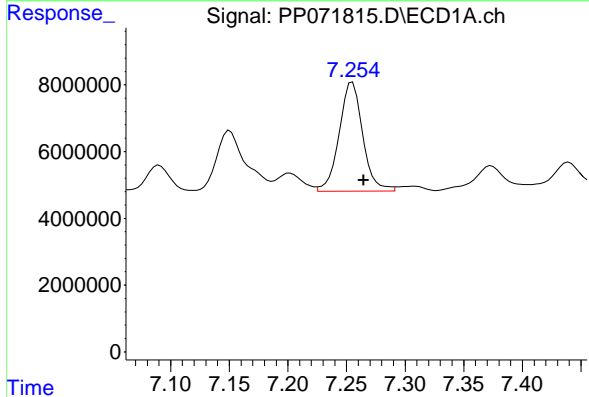
Manual Integrations
 APPROVED

Reviewed By :Yogesh Patel 05/07/2025
 Supervised By :mohammad ahmed 05/08/2025



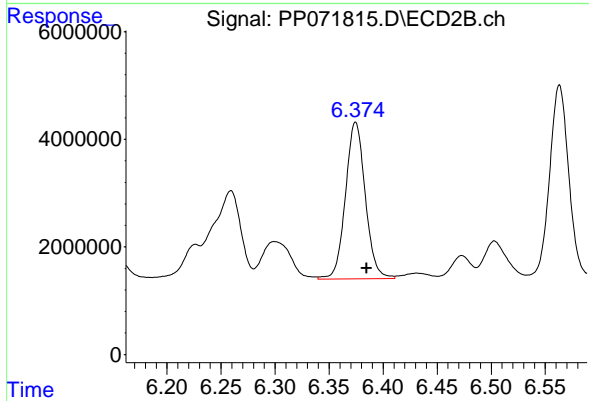
#7 AR-1016-5

R.T.: 5.341 min
 Delta R.T.: -0.009 min
 Response: 22808461
 Conc: 513.16 ng/ml



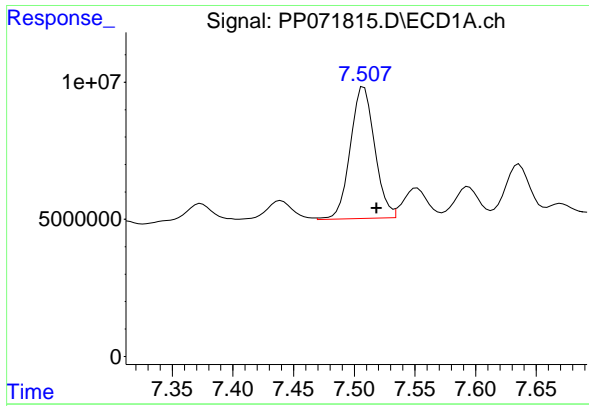
#31 AR-1260-1

R.T.: 7.255 min
 Delta R.T.: -0.009 min
 Response: 45742505
 Conc: 476.36 ng/ml



#31 AR-1260-1

R.T.: 6.375 min
 Delta R.T.: -0.010 min
 Response: 37144060
 Conc: 513.75 ng/ml



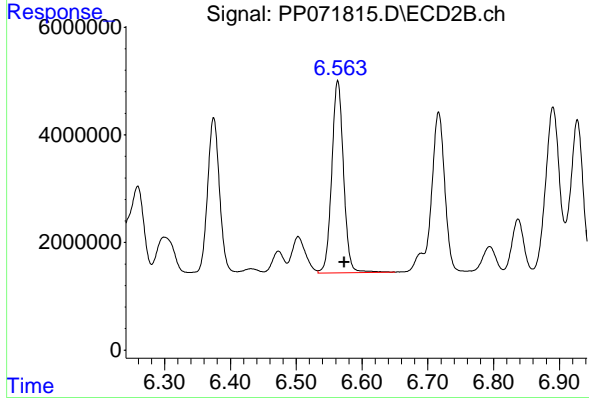
#32 AR-1260-2

R.T.: 7.508 min
 Delta R.T.: -0.010 min
 Response: 67323308
 Conc: 470.54 ng/ml

Instrument : ECD_P
 Client Sample Id : AR1660CCC500

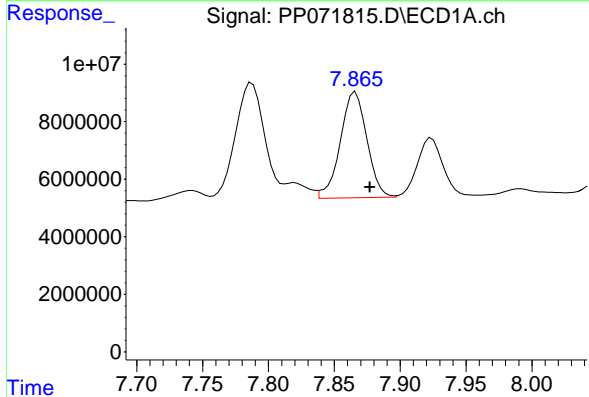
Manual Integrations
 APPROVED

Reviewed By :Yogesh Patel 05/07/2025
 Supervised By :mohammad ahmed 05/08/2025



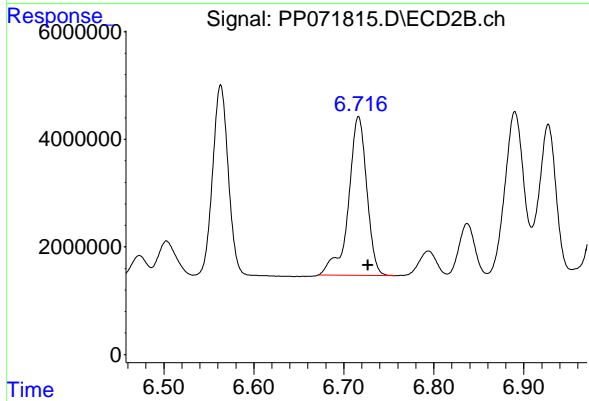
#32 AR-1260-2

R.T.: 6.563 min
 Delta R.T.: -0.010 min
 Response: 44176811
 Conc: 505.10 ng/ml



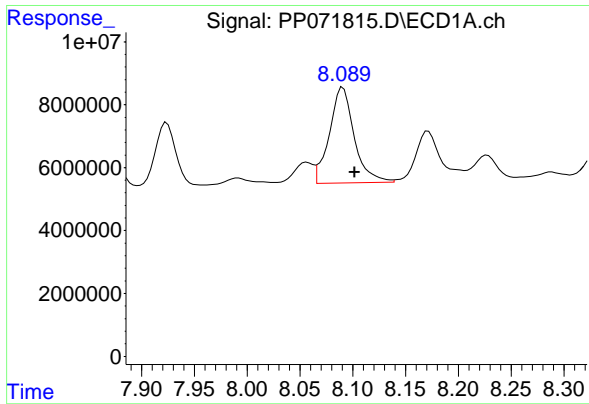
#33 AR-1260-3

R.T.: 7.866 min
 Delta R.T.: -0.011 min
 Response: 51535610
 Conc: 459.71 ng/ml



#33 AR-1260-3

R.T.: 6.716 min
 Delta R.T.: -0.010 min
 Response: 41733369
 Conc: 532.40 ng/ml



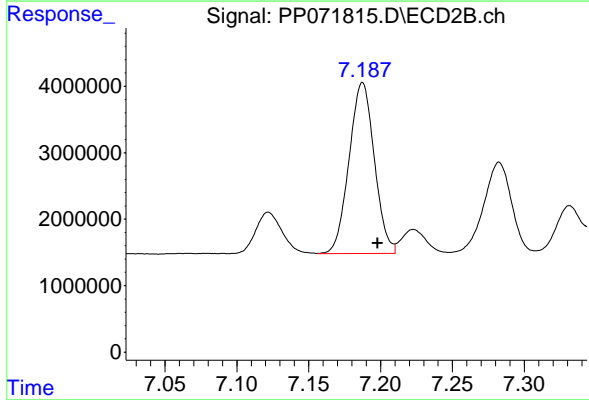
#34 AR-1260-4

R.T.: 8.091 min
 Delta R.T.: -0.011 min
 Response: 49783747
 Conc: 441.09 ng/ml

Instrument : ECD_P
 Client Sample Id : AR1660CCC500

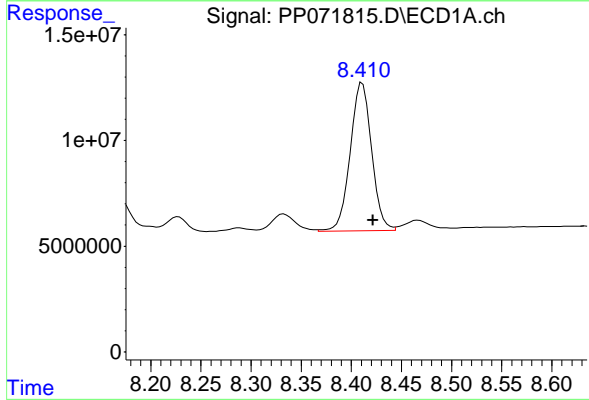
Manual Integrations
 APPROVED

Reviewed By :Yogesh Patel 05/07/2025
 Supervised By :mohammad ahmed 05/08/2025



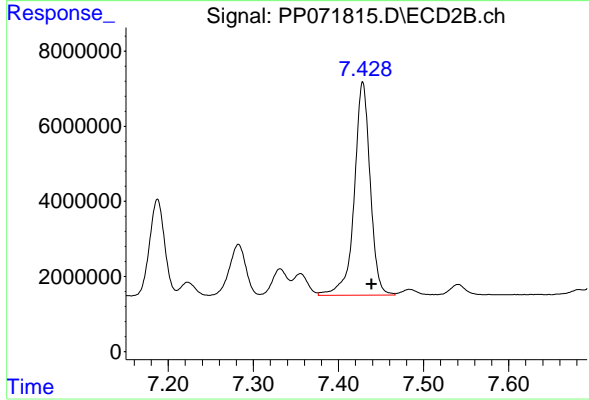
#34 AR-1260-4

R.T.: 7.187 min
 Delta R.T.: -0.010 min
 Response: 31464383
 Conc: 498.56 ng/ml



#35 AR-1260-5

R.T.: 8.411 min
 Delta R.T.: -0.011 min
 Response: 104216261
 Conc: 459.97 ng/ml



#35 AR-1260-5

R.T.: 7.429 min
 Delta R.T.: -0.010 min
 Response: 73824138
 Conc: 489.62 ng/ml