

Data Path : Z:\pestpcbsrv\HPCHEM1\ECD\_P\Data\PP050722\  
 Data File : PP047213.D  
 Signal(s) : Signal #1: ECD1A.ch Signal #2: ECD2B.ch  
 Acq On : 08 May 2022 14:11  
 Operator : YP\AJ  
 Sample : N2726-01  
 Misc :  
 ALS Vial : 69 Sample Multiplier: 1

Instrument :  
 ECD\_P  
 ClientSampleId :

Integration File signal 1: autoint1.e  
 Integration File signal 2: autoint2.e  
 Quant Time: May 09 02:51:15 2022  
 Quant Method : Z:\pestpcbsrv\HPCHEM1\ECD\_P\methods\PP042222.M  
 Quant Title : GC EXTRACTABLES  
 QLast Update : Fri May 06 10:17:17 2022  
 Response via : Initial Calibration  
 Integrator: ChemStation

Volume Inj. : 2 µl  
 Signal #1 Phase : ZB-MR1 Signal #2 Phase: ZB-MR2  
 Signal #1 Info : 30Mx0.32mmx 0.50µ Signal #2 Info : 30M x 0.32mm x 0.25µm

Compound	RT#1	RT#2	Resp#1	Resp#2	ng/ml	ng/ml
System Monitoring Compounds						
1) SA Tetrachlo...	3.853	3.120	49400072	74024715	20.464	22.566
2) SA Decachlor...	9.919	8.425	20488858	35597726	13.924	14.924
Target Compounds						
3) L1 AR-1016-1	5.091	4.266	345357	1182155	4.586	10.290 #
4) L1 AR-1016-2	5.130	4.266	3033624	1182155	26.641	6.968 #
5) L1 AR-1016-3	5.197	4.451	10414783	207491	145.691	2.370 #
6) L1 AR-1016-4	5.294	4.498	547718	778042	9.110	11.176
7) L1 AR-1016-5	5.620	4.712	129144	2195860	2.439	25.818 #
8) L2 AR-1221-1	4.096	3.339f	344872	388107	12.505	8.789 #
9) L2 AR-1221-2	4.190	3.431	549890	1522231	27.084	45.070 #
10) L2 AR-1221-3	4.256	3.513	574320	355658	8.810	3.580 #
11) L3 AR-1232-1	4.269	3.513	471092	355658	9.622	4.688 #
12) L3 AR-1232-2	4.838	4.266f	158515	1182155	6.530	16.398 #
13) L3 AR-1232-3	5.130	4.451f	3033624	207491	64.228	5.699 #
14) L3 AR-1232-4	5.294	4.571	547718	17419813	22.510	546.827 #
15) L3 AR-1232-5	5.393f	4.712f	256582	2195860	15.421	76.229 #
16) L4 AR-1242-1	5.091	4.266f	345357	1182155	5.447	11.991 #
17) L4 AR-1242-2	5.130	4.266	3033624	1182155	31.842	8.162 #
18) L4 AR-1242-3	5.197	4.451	10414783	207491	173.970	2.792 #
19) L4 AR-1242-4	5.294	4.538	547718	3882086	10.829	54.356 #
20) L4 AR-1242-5	6.082	5.091	988827	475337	19.623	4.926 #
21) L5 AR-1248-1	5.130f	4.266	3033624	1182155	72.583	17.204 #
22) L5 AR-1248-2	5.393f	4.498f	256582	778042	4.341	8.322 #
23) L5 AR-1248-3	5.620	4.571	129144	17419813	1.849	178.441 #
24) L5 AR-1248-4	6.062	4.712f	176240	2195860	2.298	18.654 #
25) L5 AR-1248-5	6.125f	5.165	71586	348388	0.920	2.859 #
26) L6 AR-1254-1	6.034	5.091	75430	475337	1.299	2.463 #
27) L6 AR-1254-2	6.242f	5.255	1759034	3830410	14.273	23.002 #
28) L6 AR-1254-3	6.659	5.675	296770	1453407	2.243	5.829 #
29) L6 AR-1254-4	6.971	5.930	137822	537072	1.387	3.130 #
30) L6 AR-1254-5	7.419	6.373	1219309	1819665	13.863	8.339 #
31) L7 AR-1260-1	6.835	5.817	610154	1650654	7.230	10.373 #
32) L7 AR-1260-2	7.114	6.024	1071327	1915959	10.640	9.419
33) L7 AR-1260-3	7.503	6.182	772402	1460184	9.534	8.548
34) L7 AR-1260-4	7.750	6.694	789964	897743	9.918	6.177 #
35) L7 AR-1260-5	8.093	6.963	1685140	2494050	10.609	7.103 #
36) L8 AR-1262-1	7.546f	6.417f	137365	1582320	1.136	6.405 #
37) L8 AR-1262-2	8.093f	6.731	1685140	175403	8.763	0.907 #
38) L8 AR-1262-3	8.430	7.305f	1117723	1368793	8.325	8.430
39) L8 AR-1262-4	0.000	7.336f	0	5092453	N.D.	17.781 #
40) L8 AR-1262-5	9.179f	7.879f	469767	721702	6.809	5.500
41) L9 AR-1268-1	8.430	7.305f	1117723	1368793	4.650	2.857 #

Data Path : Z:\pestpcbsrv\HPCHEM1\ECD\_P\Data\PP050722\  
 Data File : PP047213.D  
 Signal(s) : Signal #1: ECD1A.ch Signal #2: ECD2B.ch  
 Acq On : 08 May 2022 14:11  
 Operator : YP\AJ  
 Sample : N2726-01  
 Misc :  
 ALS Vial : 69 Sample Multiplier: 1

Instrument :  
 ECD\_P  
 ClientSampleId :

Integration File signal 1: autoint1.e  
 Integration File signal 2: autoint2.e  
 Quant Time: May 09 02:51:15 2022  
 Quant Method : Z:\pestpcbsrv\HPCHEM1\ECD\_P\methods\PP042222.M  
 Quant Title : GC EXTRACTABLES  
 QLast Update : Fri May 06 10:17:17 2022  
 Response via : Initial Calibration  
 Integrator: ChemStation

Volume Inj. : 2 µl  
 Signal #1 Phase : ZB-MR1 Signal #2 Phase: ZB-MR2  
 Signal #1 Info : 30Mx0.32mmx 0.50µ Signal #2 Info : 30M x 0.32mm x 0.25µm

	Compound	RT#1	RT#2	Resp#1	Resp#2	ng/ml	ng/ml
42)	L9 AR-1268-2	0.000	7.336f	0	5092453	N.D.	12.023 #
43)	L9 AR-1268-3	8.779	0.000	121511	0	0.633	N.D. #
44)	L9 AR-1268-4	9.179f	7.879f	469767	721702	6.089	4.908
45)	L9 AR-1268-5	9.592f	0.000	525767	0	0.939	N.D. #

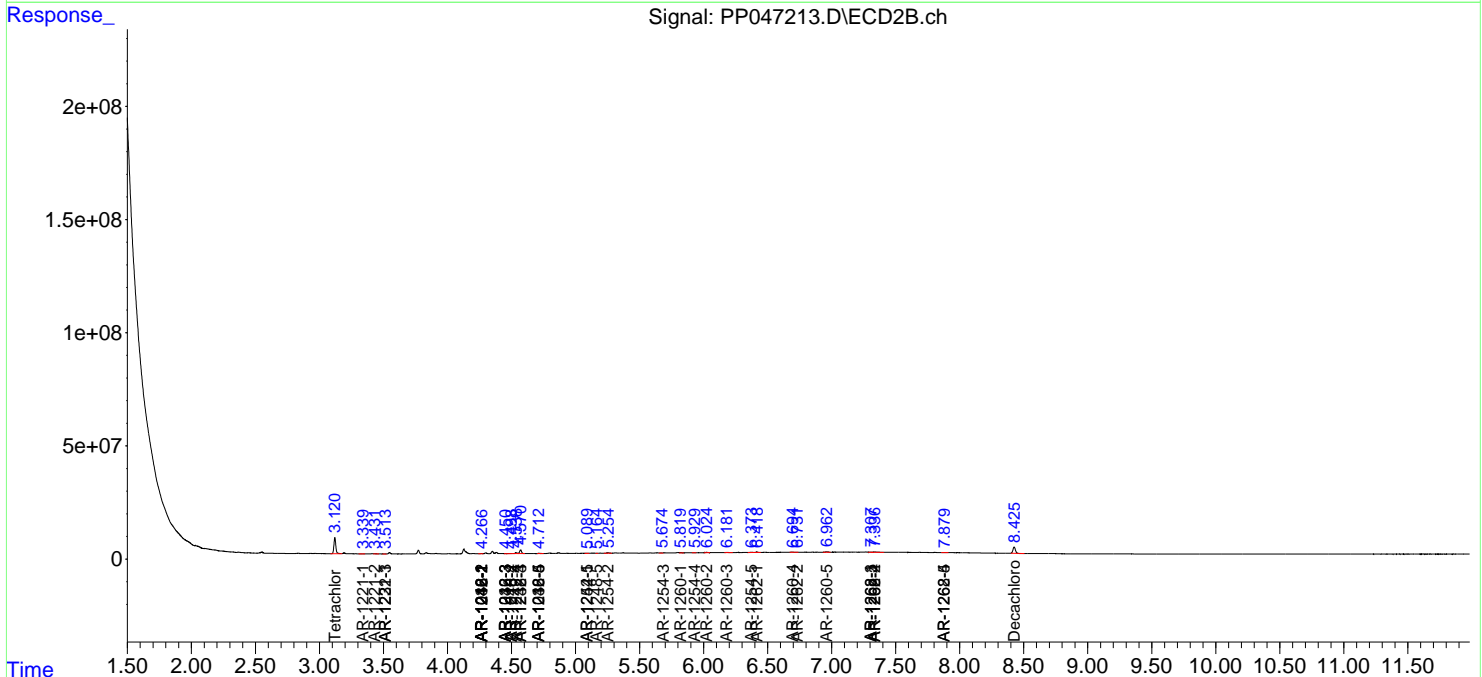
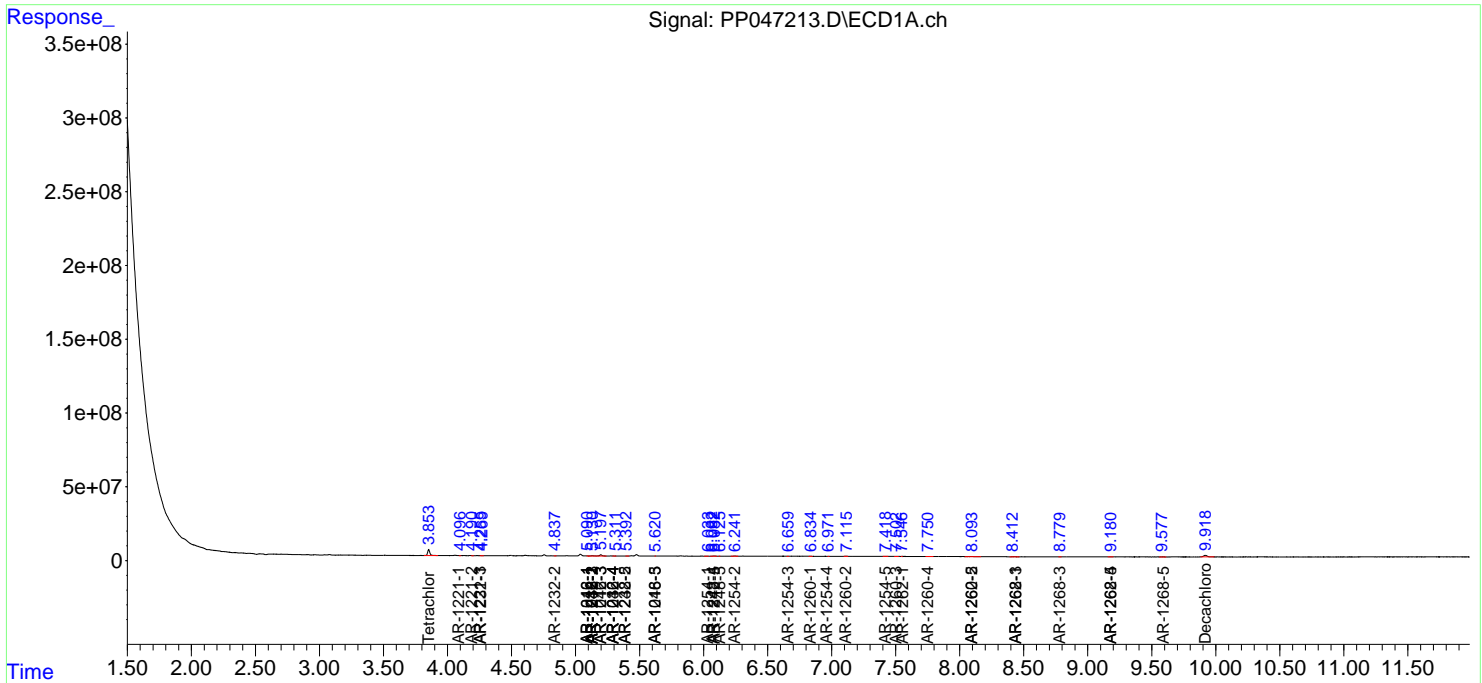
(f)=RT Delta > 1/2 Window (#)=Amounts differ by > 25% (m)=manual int.

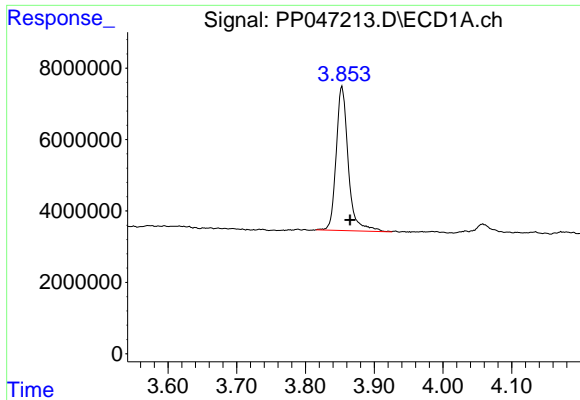
Data Path : Z:\pestpcbsrv\HPCHEM1\ECD\_P\Data\PP050722\  
 Data File : PP047213.D  
 Signal(s) : Signal #1: ECD1A.ch Signal #2: ECD2B.ch  
 Acq On : 08 May 2022 14:11  
 Operator : YP\AJ  
 Sample : N2726-01  
 Misc :  
 ALS Vial : 69 Sample Multiplier: 1

Instrument :  
 ECD\_P  
 ClientSampleId :

Integration File signal 1: autoint1.e  
 Integration File signal 2: autoint2.e  
 Quant Time: May 09 02:51:15 2022  
 Quant Method : Z:\pestpcbsrv\HPCHEM1\ECD\_P\methods\PP042222.M  
 Quant Title : GC EXTRACTABLES  
 QLast Update : Fri May 06 10:17:17 2022  
 Response via : Initial Calibration  
 Integrator: ChemStation

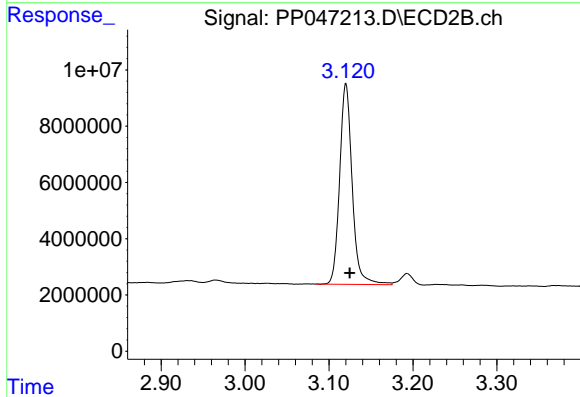
Volume Inj. : 2 µl  
 Signal #1 Phase : ZB-MR1 Signal #2 Phase: ZB-MR2  
 Signal #1 Info : 30Mx0.32mmx 0.50µ Signal #2 Info : 30M x 0.32mm x 0.25µm



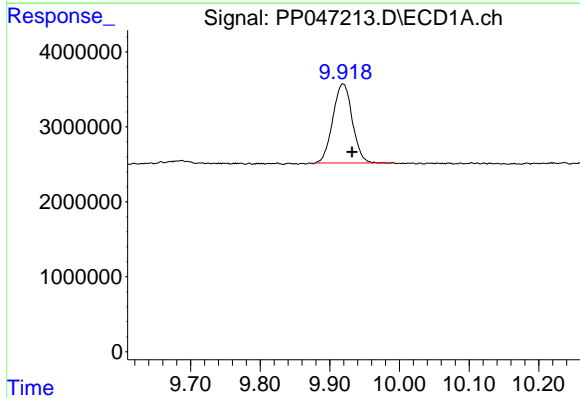


#1 Tetrachloro-m-xylene  
R.T.: 3.853 min  
Delta R.T.: -0.012 min  
Response: 49400072  
Conc: 20.46 ng/ml

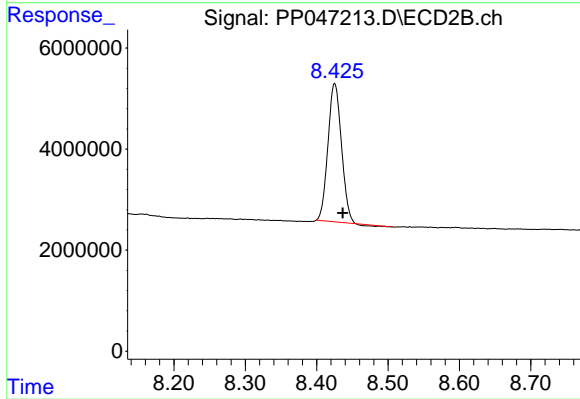
Instrument :  
ECD\_P  
ClientSampleId :



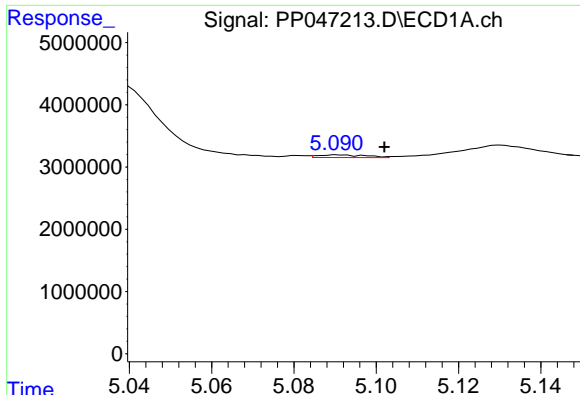
#1 Tetrachloro-m-xylene  
R.T.: 3.120 min  
Delta R.T.: -0.005 min  
Response: 74024715  
Conc: 22.57 ng/ml



#2 Decachlorobiphenyl  
R.T.: 9.919 min  
Delta R.T.: -0.013 min  
Response: 20488858  
Conc: 13.92 ng/ml



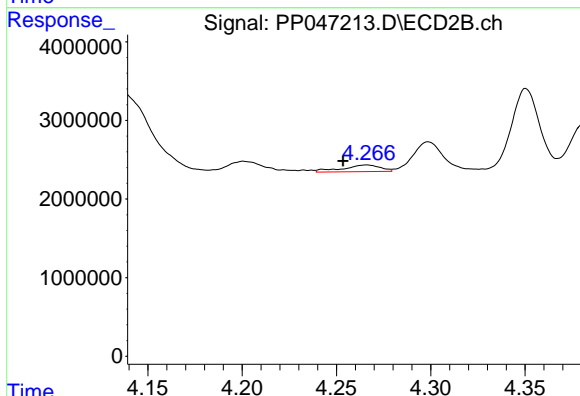
#2 Decachlorobiphenyl  
R.T.: 8.425 min  
Delta R.T.: -0.011 min  
Response: 35597726  
Conc: 14.92 ng/ml



#3 AR-1016-1

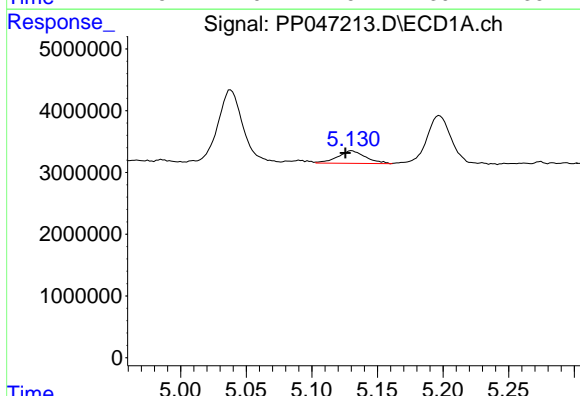
R.T.: 5.091 min  
 Delta R.T.: -0.011 min  
 Response: 345357  
 Conc: 4.59 ng/ml

Instrument :  
 ECD\_P  
 ClientSampleId :



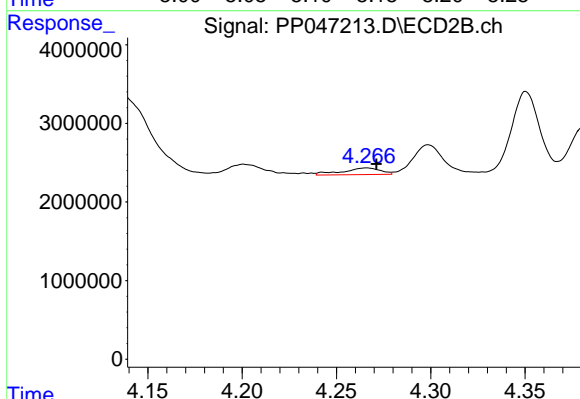
#3 AR-1016-1

R.T.: 4.266 min  
 Delta R.T.: 0.013 min  
 Response: 1182155  
 Conc: 10.29 ng/ml



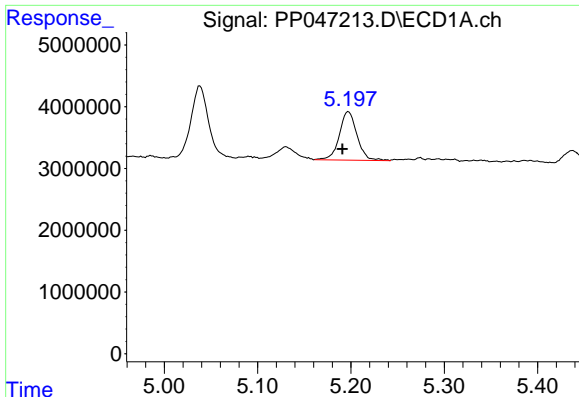
#4 AR-1016-2

R.T.: 5.130 min  
 Delta R.T.: 0.005 min  
 Response: 3033624  
 Conc: 26.64 ng/ml



#4 AR-1016-2

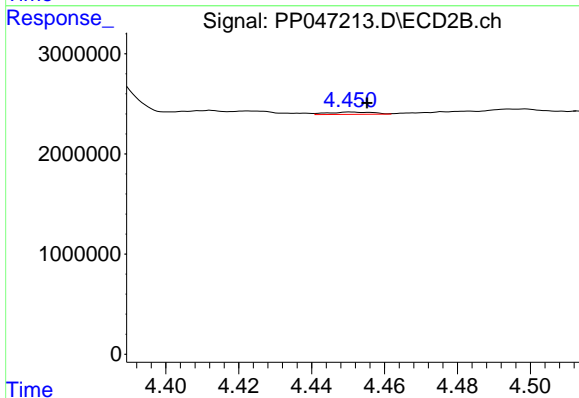
R.T.: 4.266 min  
 Delta R.T.: -0.005 min  
 Response: 1182155  
 Conc: 6.97 ng/ml



#5 AR-1016-3

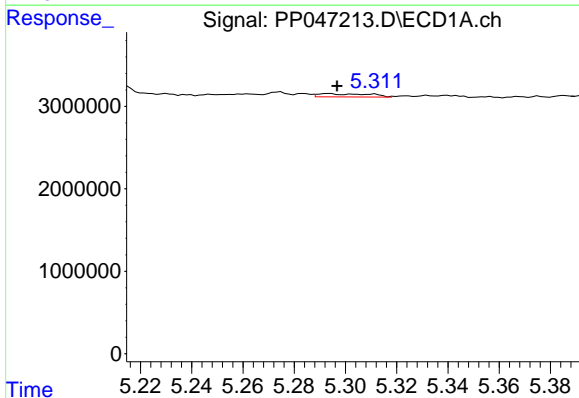
R.T.: 5.197 min  
 Delta R.T.: 0.006 min  
 Response: 10414783  
 Conc: 145.69 ng/ml

Instrument :  
 ECD\_P  
 ClientSampleId :



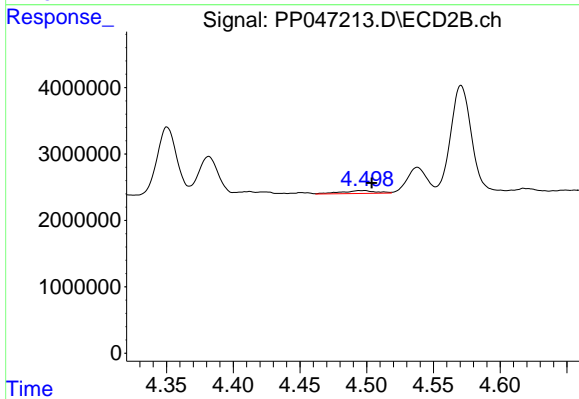
#5 AR-1016-3

R.T.: 4.451 min  
 Delta R.T.: -0.004 min  
 Response: 207491  
 Conc: 2.37 ng/ml



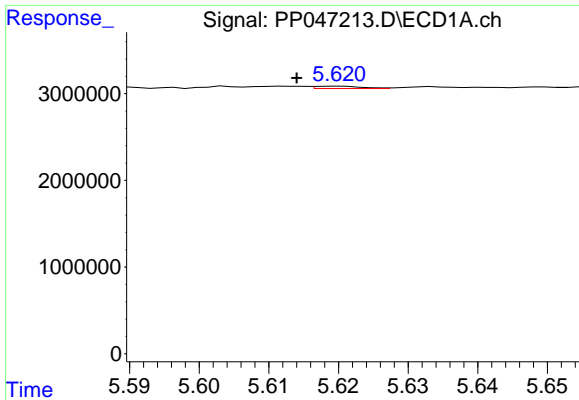
#6 AR-1016-4

R.T.: 5.294 min  
 Delta R.T.: -0.003 min  
 Response: 547718  
 Conc: 9.11 ng/ml



#6 AR-1016-4

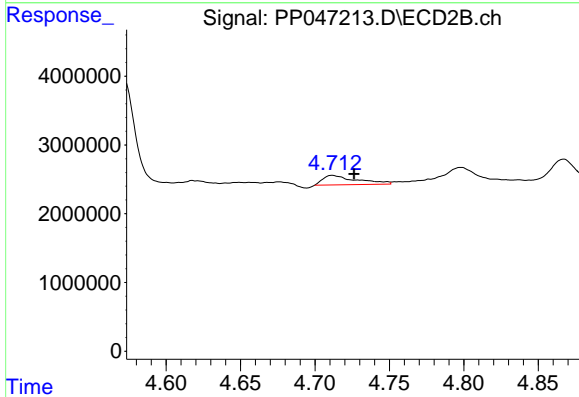
R.T.: 4.498 min  
 Delta R.T.: -0.006 min  
 Response: 778042  
 Conc: 11.18 ng/ml



#7 AR-1016-5

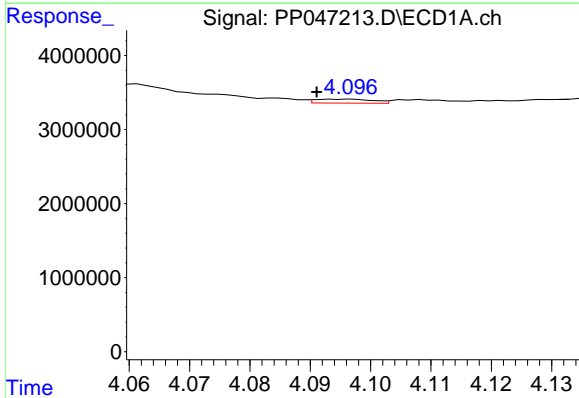
R.T.: 5.620 min  
 Delta R.T.: 0.006 min  
 Response: 129144  
 Conc: 2.44 ng/ml

Instrument :  
 ECD\_P  
 ClientSampleId :



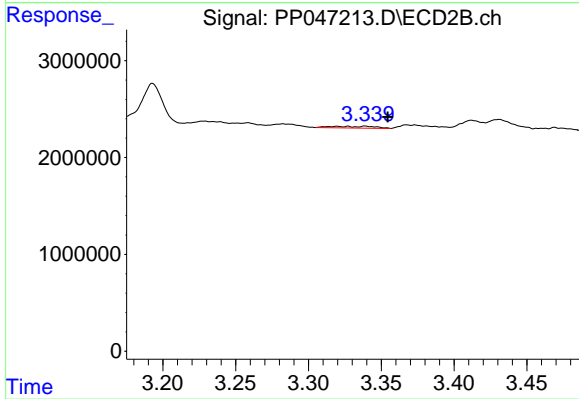
#7 AR-1016-5

R.T.: 4.712 min  
 Delta R.T.: -0.015 min  
 Response: 2195860  
 Conc: 25.82 ng/ml



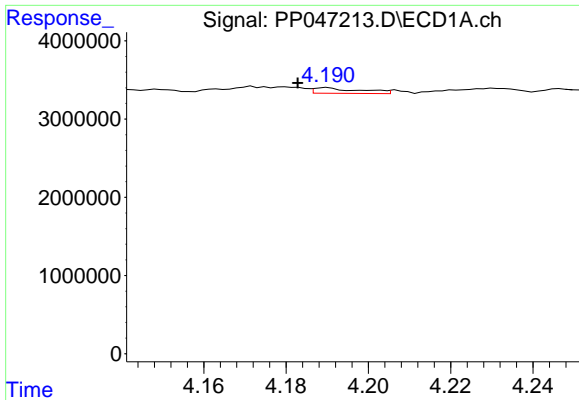
#8 AR-1221-1

R.T.: 4.096 min  
 Delta R.T.: 0.005 min  
 Response: 344872  
 Conc: 12.51 ng/ml



#8 AR-1221-1

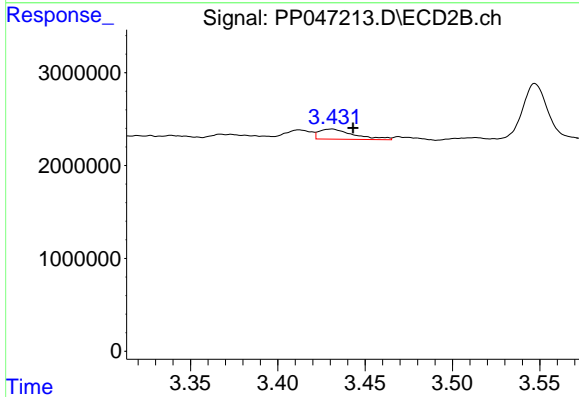
R.T.: 3.339 min  
 Delta R.T.: -0.015 min  
 Response: 388107  
 Conc: 8.79 ng/ml



#9 AR-1221-2

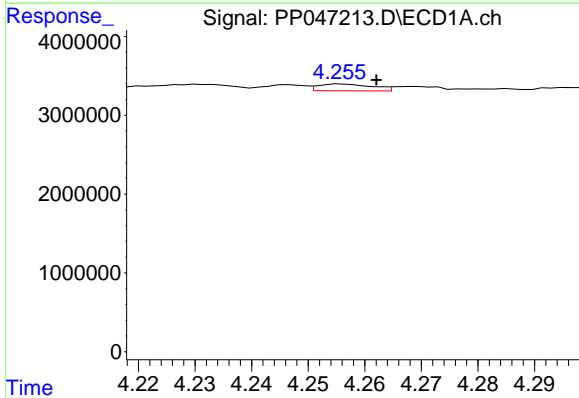
R.T.: 4.190 min  
 Delta R.T.: 0.007 min  
 Response: 549890  
 Conc: 27.08 ng/ml

Instrument :  
 ECD\_P  
 ClientSampleId :



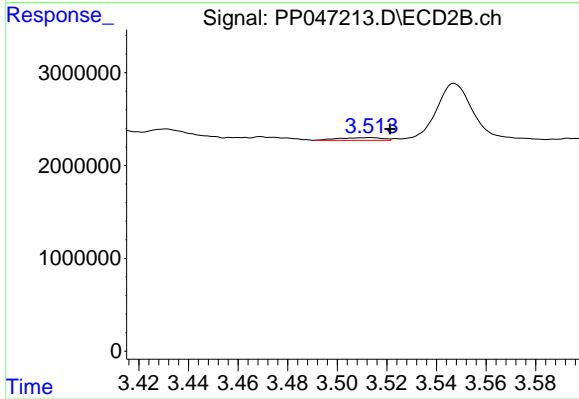
#9 AR-1221-2

R.T.: 3.431 min  
 Delta R.T.: -0.012 min  
 Response: 1522231  
 Conc: 45.07 ng/ml



#10 AR-1221-3

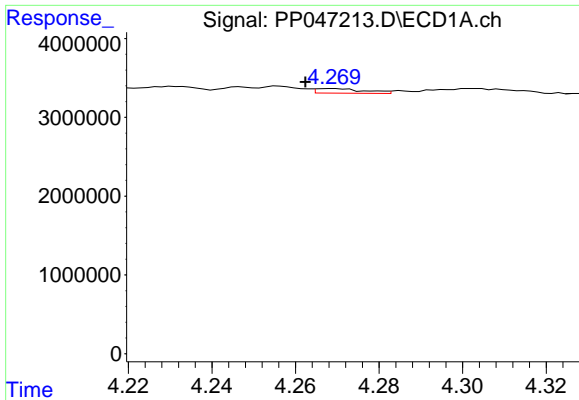
R.T.: 4.256 min  
 Delta R.T.: -0.006 min  
 Response: 574320  
 Conc: 8.81 ng/ml



#10 AR-1221-3

R.T.: 3.513 min  
 Delta R.T.: -0.008 min  
 Response: 355658  
 Conc: 3.58 ng/ml

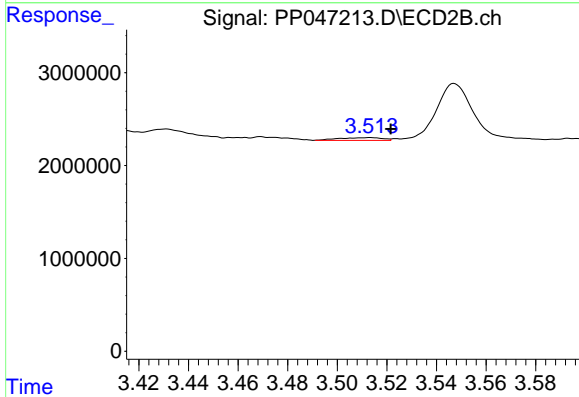




#11 AR-1232-1

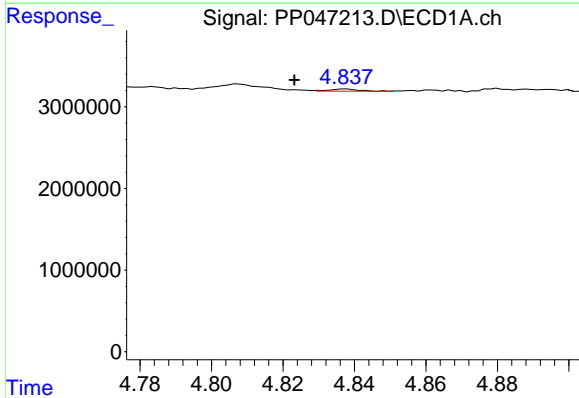
R.T.: 4.269 min  
 Delta R.T.: 0.006 min  
 Response: 471092  
 Conc: 9.62 ng/ml

Instrument :  
 ECD\_P  
 ClientSampleId :



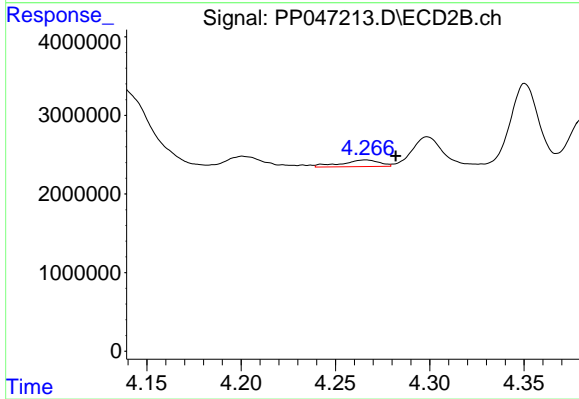
#11 AR-1232-1

R.T.: 3.513 min  
 Delta R.T.: -0.008 min  
 Response: 355658  
 Conc: 4.69 ng/ml



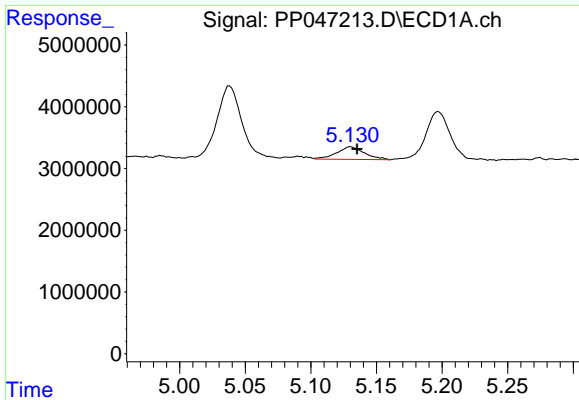
#12 AR-1232-2

R.T.: 4.838 min  
 Delta R.T.: 0.014 min  
 Response: 158515  
 Conc: 6.53 ng/ml



#12 AR-1232-2

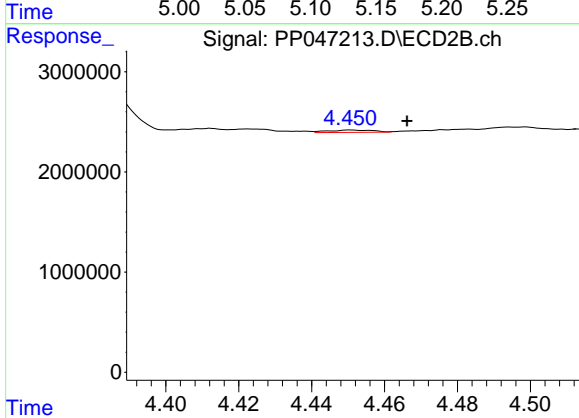
R.T.: 4.266 min  
 Delta R.T.: -0.016 min  
 Response: 1182155  
 Conc: 16.40 ng/ml



#13 AR-1232-3

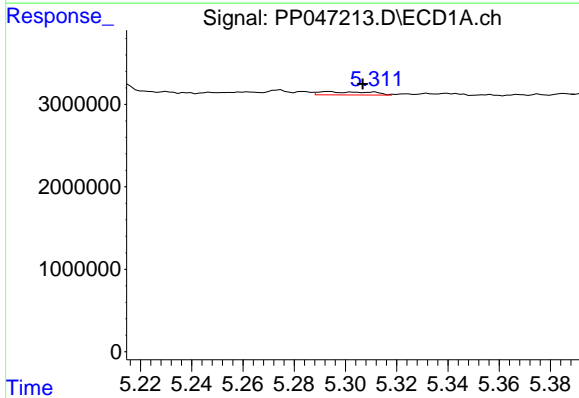
R.T.: 5.130 min  
 Delta R.T.: -0.005 min  
 Response: 3033624  
 Conc: 64.23 ng/ml

Instrument :  
 ECD\_P  
 ClientSampleId :



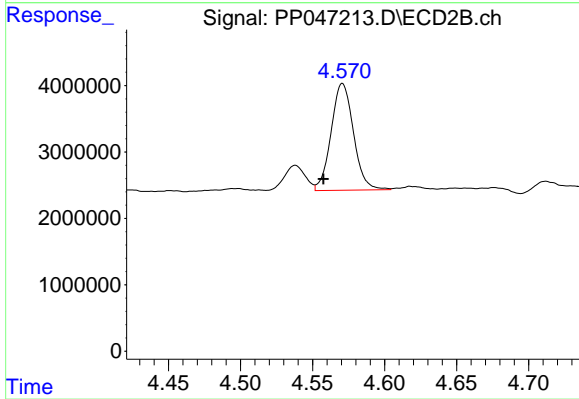
#13 AR-1232-3

R.T.: 4.451 min  
 Delta R.T.: -0.015 min  
 Response: 207491  
 Conc: 5.70 ng/ml



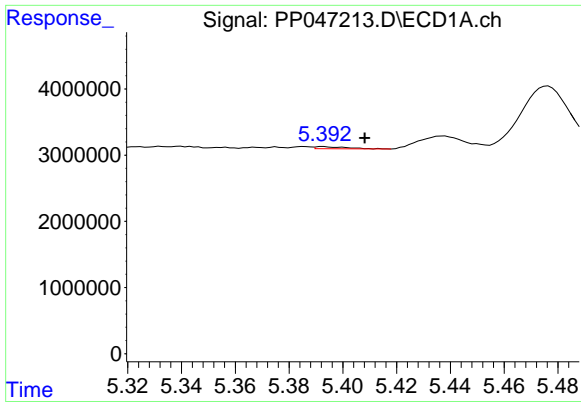
#14 AR-1232-4

R.T.: 5.294 min  
 Delta R.T.: -0.013 min  
 Response: 547718  
 Conc: 22.51 ng/ml



#14 AR-1232-4

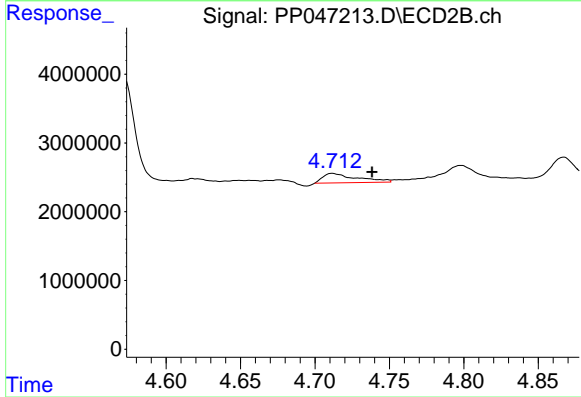
R.T.: 4.571 min  
 Delta R.T.: 0.013 min  
 Response: 17419813  
 Conc: 546.83 ng/ml



#15 AR-1232-5

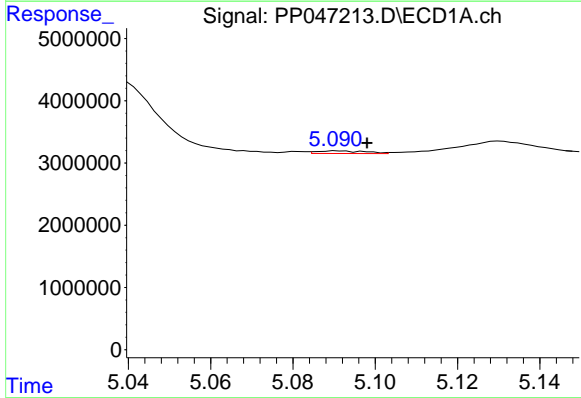
R.T.: 5.393 min  
 Delta R.T.: -0.015 min  
 Response: 256582  
 Conc: 15.42 ng/ml

Instrument :  
 ECD\_P  
 ClientSampleId :



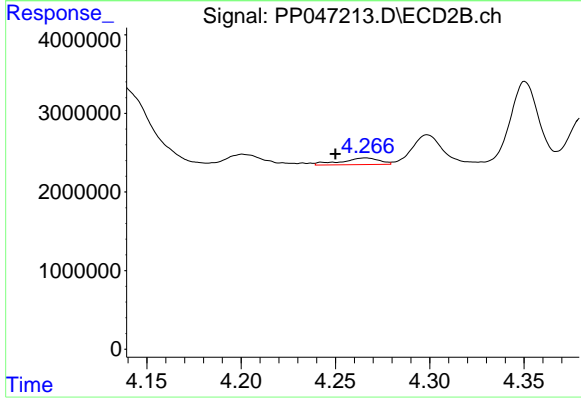
#15 AR-1232-5

R.T.: 4.712 min  
 Delta R.T.: -0.027 min  
 Response: 2195860  
 Conc: 76.23 ng/ml



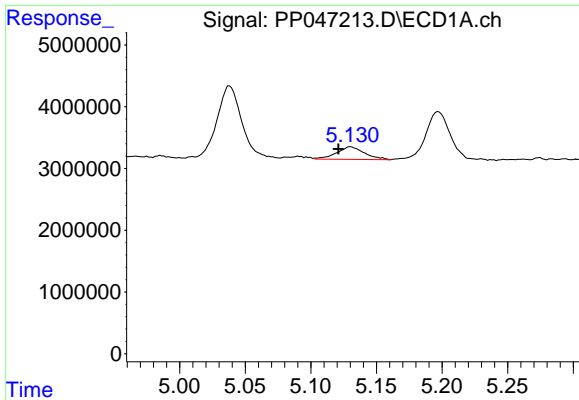
#16 AR-1242-1

R.T.: 5.091 min  
 Delta R.T.: -0.007 min  
 Response: 345357  
 Conc: 5.45 ng/ml



#16 AR-1242-1

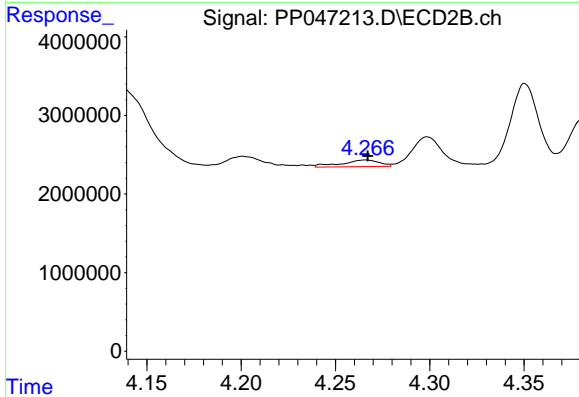
R.T.: 4.266 min  
 Delta R.T.: 0.016 min  
 Response: 1182155  
 Conc: 11.99 ng/ml



#17 AR-1242-2

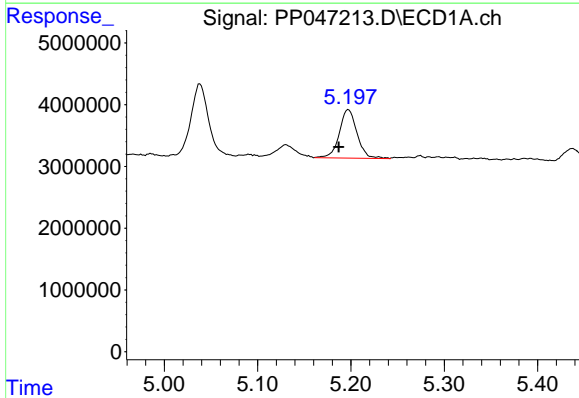
R.T.: 5.130 min  
 Delta R.T.: 0.009 min  
 Response: 3033624  
 Conc: 31.84 ng/ml

Instrument :  
 ECD\_P  
 ClientSampleId :



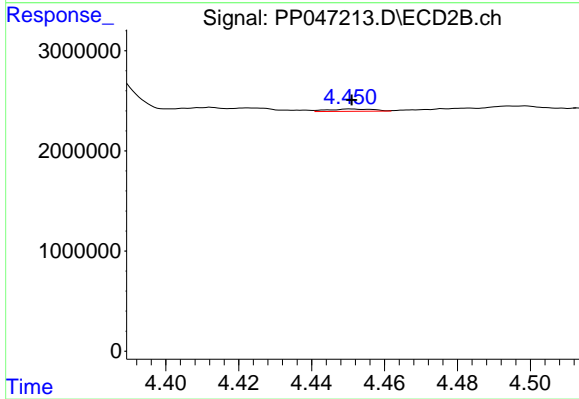
#17 AR-1242-2

R.T.: 4.266 min  
 Delta R.T.: 0.000 min  
 Response: 1182155  
 Conc: 8.16 ng/ml



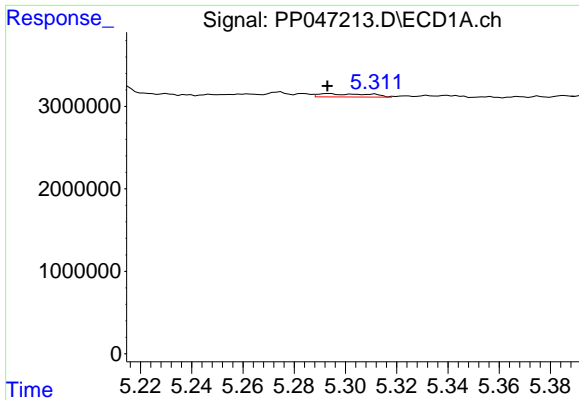
#18 AR-1242-3

R.T.: 5.197 min  
 Delta R.T.: 0.010 min  
 Response: 10414783  
 Conc: 173.97 ng/ml



#18 AR-1242-3

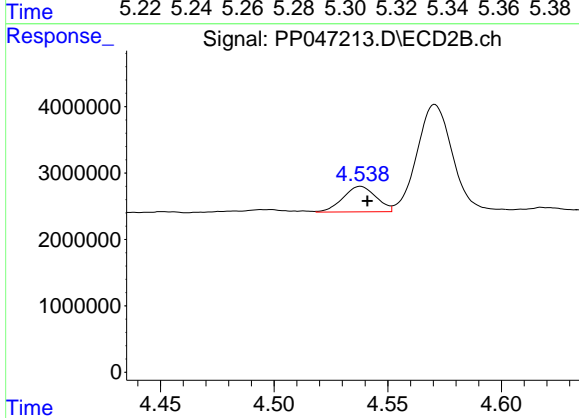
R.T.: 4.451 min  
 Delta R.T.: 0.000 min  
 Response: 207491  
 Conc: 2.79 ng/ml



#19 AR-1242-4

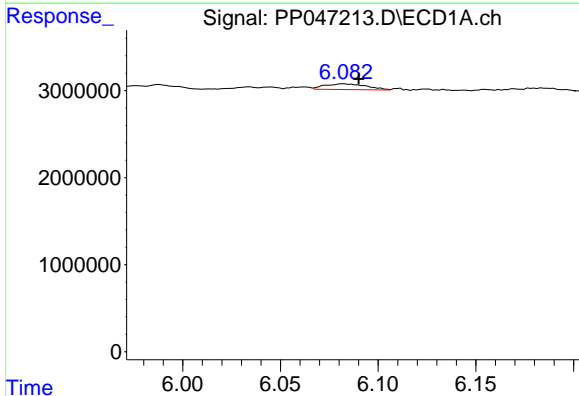
R.T.: 5.294 min  
 Delta R.T.: 0.000 min  
 Response: 547718  
 Conc: 10.83 ng/ml

Instrument :  
 ECD\_P  
 ClientSampleId :



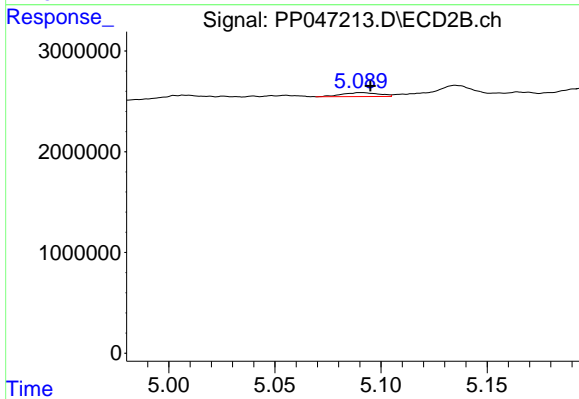
#19 AR-1242-4

R.T.: 4.538 min  
 Delta R.T.: -0.003 min  
 Response: 3882086  
 Conc: 54.36 ng/ml



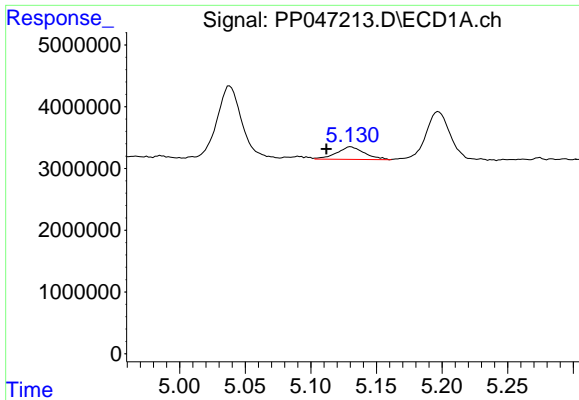
#20 AR-1242-5

R.T.: 6.082 min  
 Delta R.T.: -0.008 min  
 Response: 988827  
 Conc: 19.62 ng/ml



#20 AR-1242-5

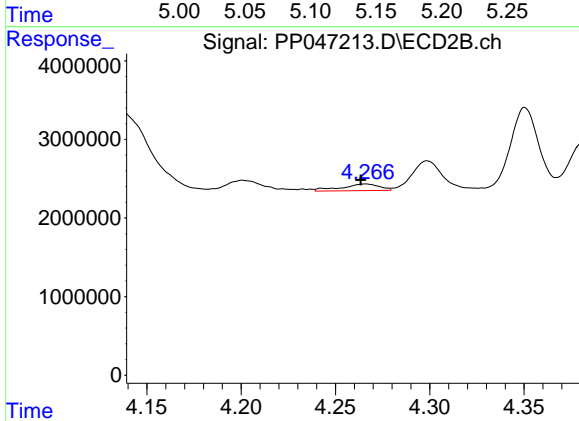
R.T.: 5.091 min  
 Delta R.T.: -0.004 min  
 Response: 475337  
 Conc: 4.93 ng/ml



#21 AR-1248-1

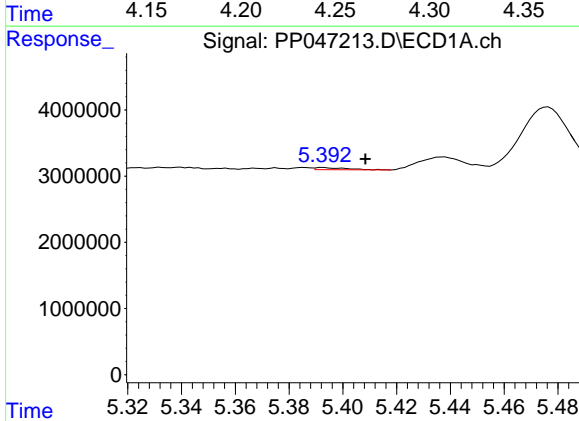
R.T.: 5.130 min  
 Delta R.T.: 0.019 min  
 Response: 3033624  
 Conc: 72.58 ng/ml

Instrument :  
 ECD\_P  
 ClientSampleId :



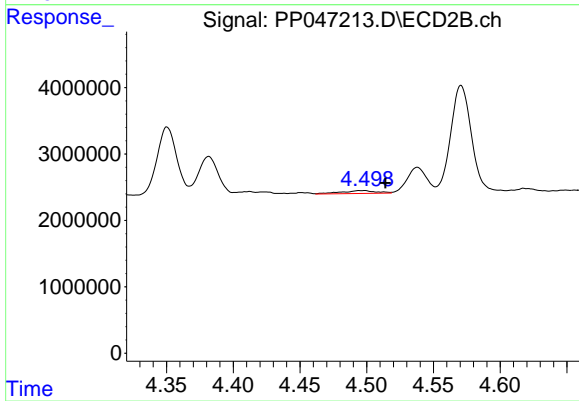
#21 AR-1248-1

R.T.: 4.266 min  
 Delta R.T.: 0.003 min  
 Response: 1182155  
 Conc: 17.20 ng/ml



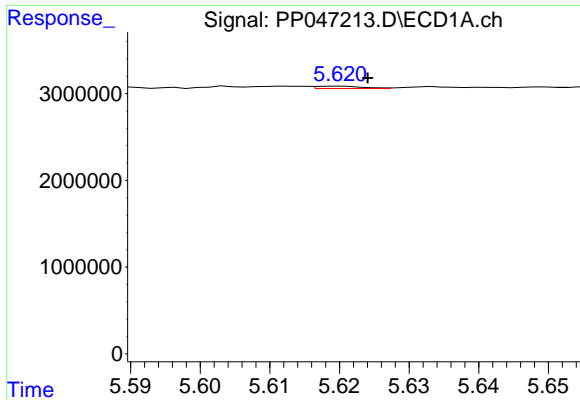
#22 AR-1248-2

R.T.: 5.393 min  
 Delta R.T.: -0.016 min  
 Response: 256582  
 Conc: 4.34 ng/ml



#22 AR-1248-2

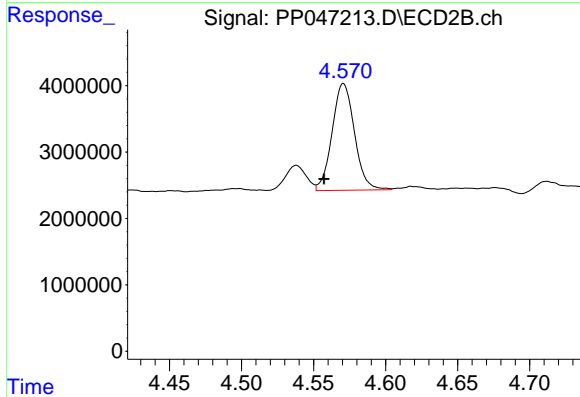
R.T.: 4.498 min  
 Delta R.T.: -0.016 min  
 Response: 778042  
 Conc: 8.32 ng/ml



#23 AR-1248-3

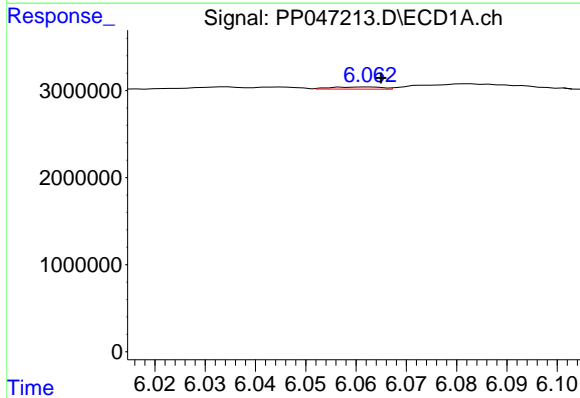
R.T.: 5.620 min  
 Delta R.T.: -0.004 min  
 Response: 129144  
 Conc: 1.85 ng/ml

Instrument :  
 ECD\_P  
 ClientSampleId :



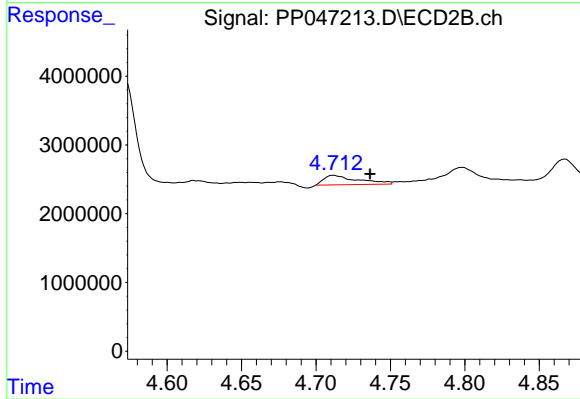
#23 AR-1248-3

R.T.: 4.571 min  
 Delta R.T.: 0.014 min  
 Response: 17419813  
 Conc: 178.44 ng/ml



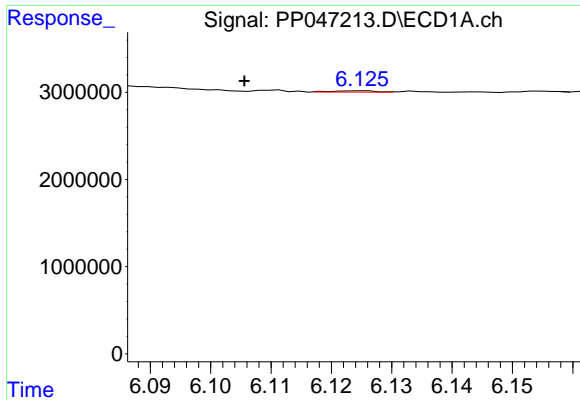
#24 AR-1248-4

R.T.: 6.062 min  
 Delta R.T.: -0.003 min  
 Response: 176240  
 Conc: 2.30 ng/ml



#24 AR-1248-4

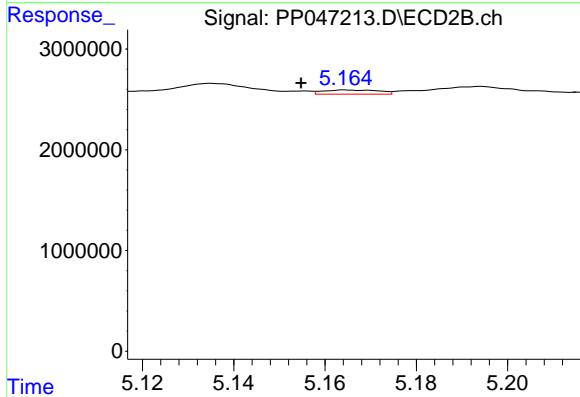
R.T.: 4.712 min  
 Delta R.T.: -0.025 min  
 Response: 2195860  
 Conc: 18.65 ng/ml



#25 AR-1248-5

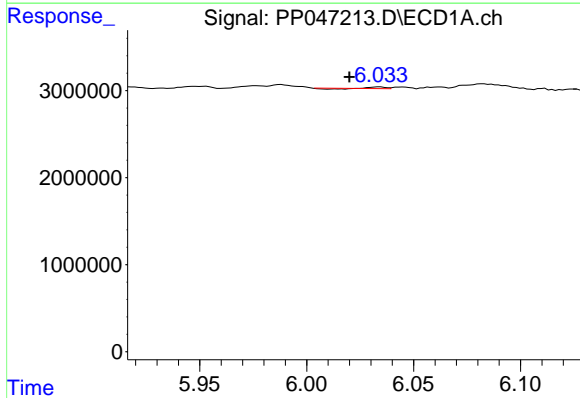
R.T.: 6.125 min  
 Delta R.T.: 0.019 min  
 Response: 71586  
 Conc: 0.92 ng/ml

Instrument :  
 ECD\_P  
 ClientSampleId :



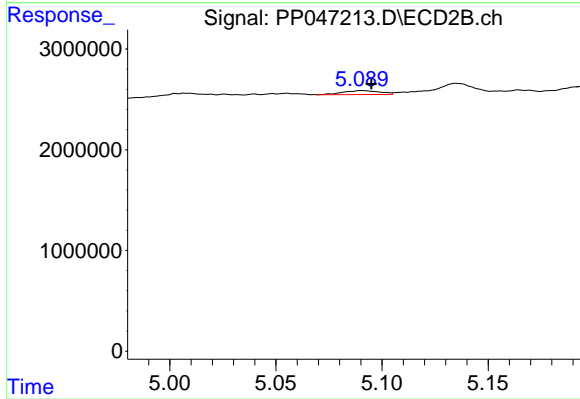
#25 AR-1248-5

R.T.: 5.165 min  
 Delta R.T.: 0.010 min  
 Response: 348388  
 Conc: 2.86 ng/ml



#26 AR-1254-1

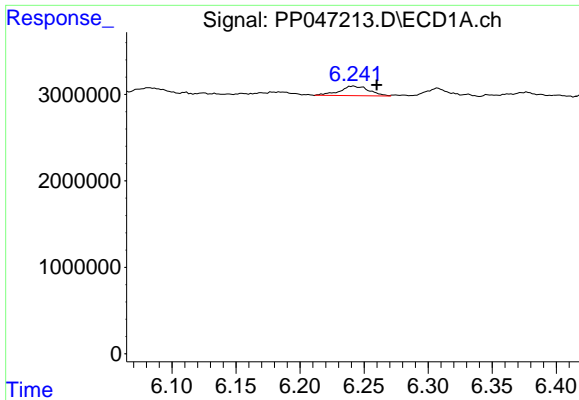
R.T.: 6.034 min  
 Delta R.T.: 0.014 min  
 Response: 75430  
 Conc: 1.30 ng/ml



#26 AR-1254-1

R.T.: 5.091 min  
 Delta R.T.: -0.004 min  
 Response: 475337  
 Conc: 2.46 ng/ml

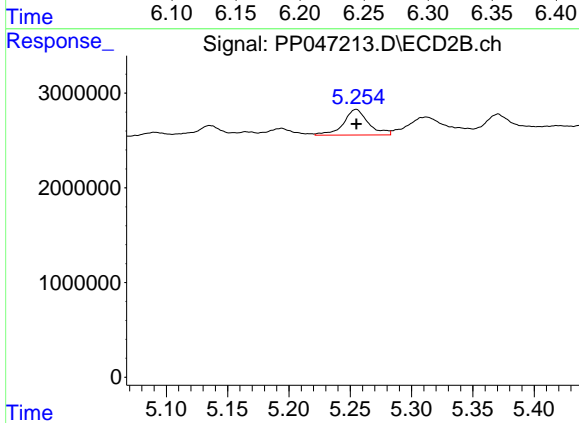




#27 AR-1254-2

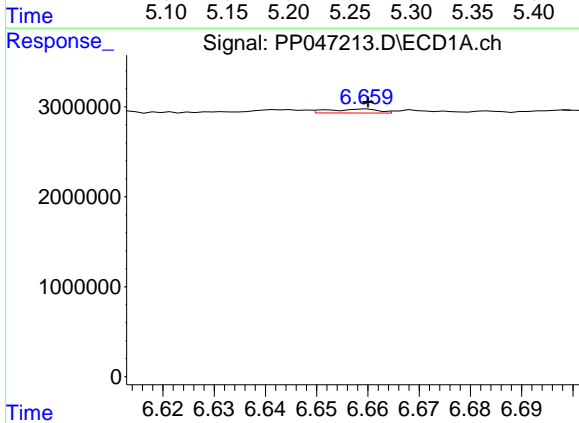
R.T.: 6.242 min  
 Delta R.T.: -0.018 min  
 Response: 1759034  
 Conc: 14.27 ng/ml

Instrument :  
 ECD\_P  
 ClientSampleId :



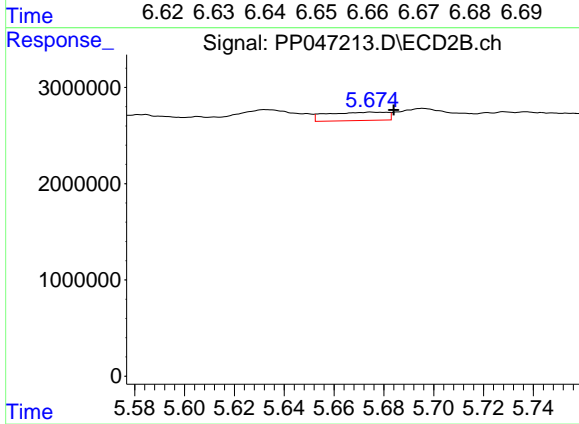
#27 AR-1254-2

R.T.: 5.255 min  
 Delta R.T.: 0.000 min  
 Response: 3830410  
 Conc: 23.00 ng/ml



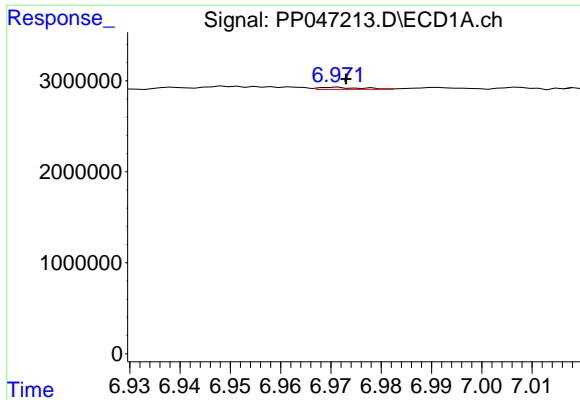
#28 AR-1254-3

R.T.: 6.659 min  
 Delta R.T.: 0.000 min  
 Response: 296770  
 Conc: 2.24 ng/ml



#28 AR-1254-3

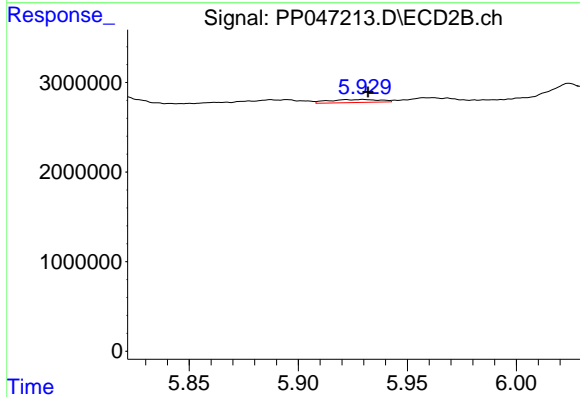
R.T.: 5.675 min  
 Delta R.T.: -0.009 min  
 Response: 1453407  
 Conc: 5.83 ng/ml



#29 AR-1254-4

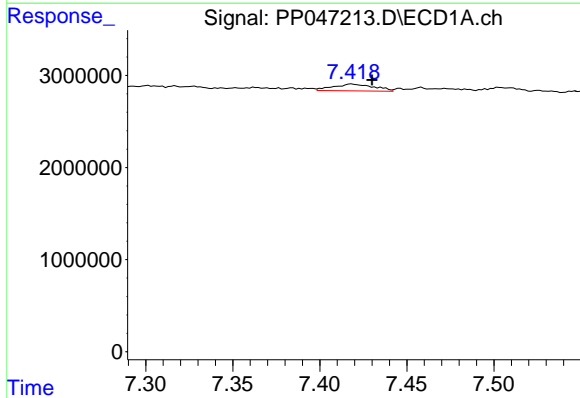
R.T.: 6.971 min  
 Delta R.T.: -0.002 min  
 Response: 137822  
 Conc: 1.39 ng/ml

Instrument :  
 ECD\_P  
 ClientSampleId :



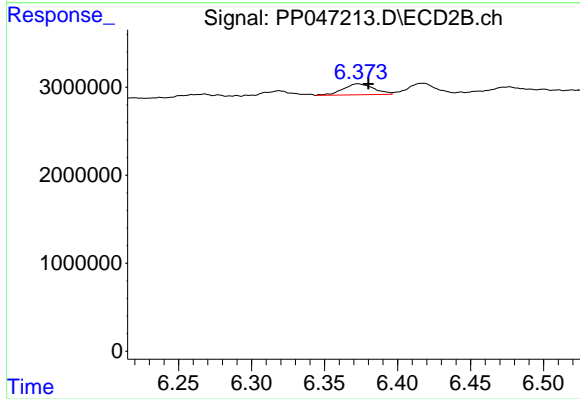
#29 AR-1254-4

R.T.: 5.930 min  
 Delta R.T.: -0.002 min  
 Response: 537072  
 Conc: 3.13 ng/ml



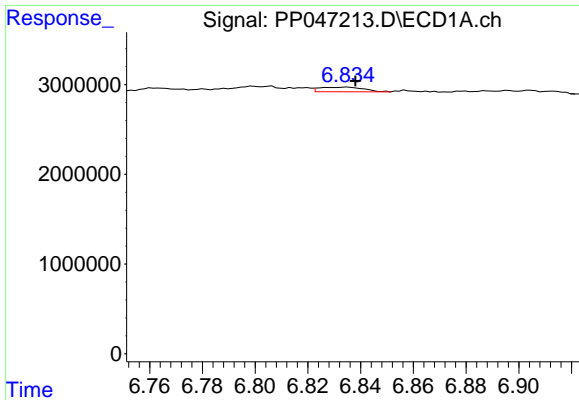
#30 AR-1254-5

R.T.: 7.419 min  
 Delta R.T.: -0.011 min  
 Response: 1219309  
 Conc: 13.86 ng/ml



#30 AR-1254-5

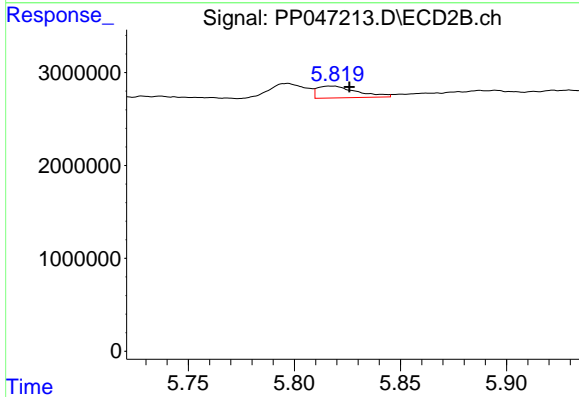
R.T.: 6.373 min  
 Delta R.T.: -0.007 min  
 Response: 1819665  
 Conc: 8.34 ng/ml



#31 AR-1260-1

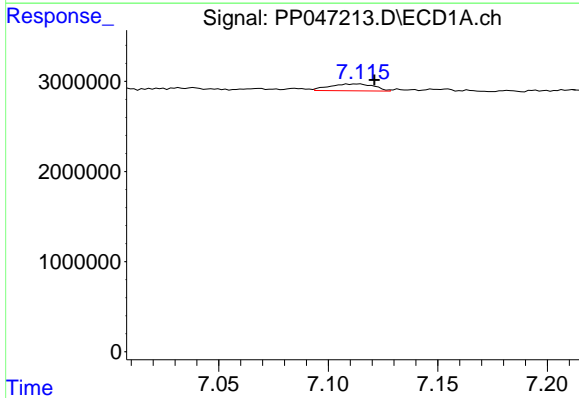
R.T.: 6.835 min  
 Delta R.T.: -0.003 min  
 Response: 610154  
 Conc: 7.23 ng/ml

Instrument :  
 ECD\_P  
 ClientSampleId :



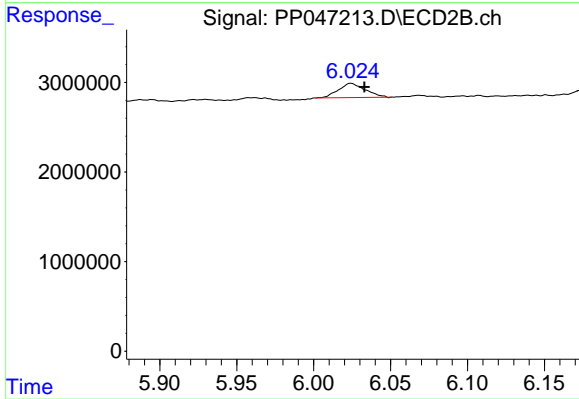
#31 AR-1260-1

R.T.: 5.817 min  
 Delta R.T.: -0.009 min  
 Response: 1650654  
 Conc: 10.37 ng/ml



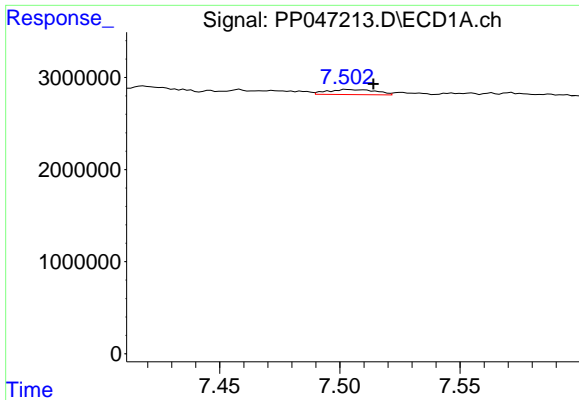
#32 AR-1260-2

R.T.: 7.114 min  
 Delta R.T.: -0.007 min  
 Response: 1071327  
 Conc: 10.64 ng/ml



#32 AR-1260-2

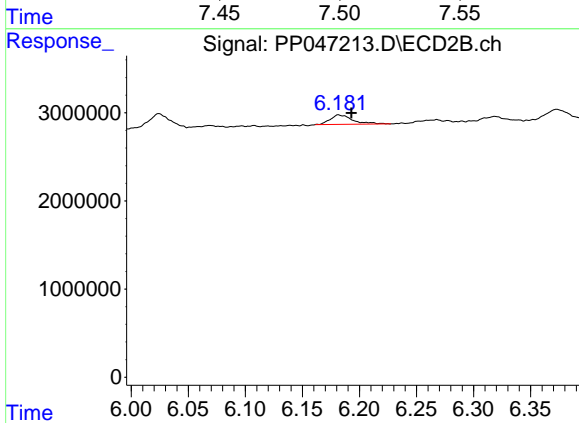
R.T.: 6.024 min  
 Delta R.T.: -0.009 min  
 Response: 1915959  
 Conc: 9.42 ng/ml



#33 AR-1260-3

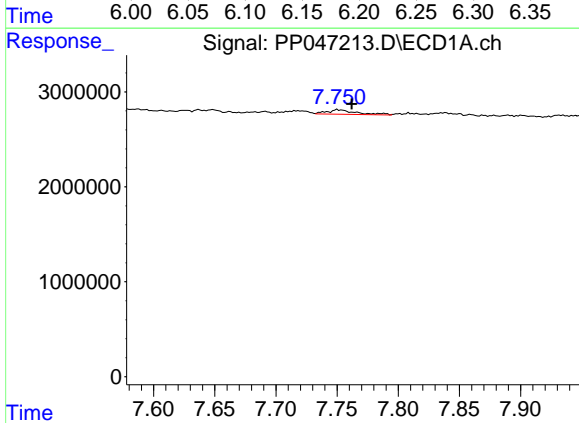
R.T.: 7.503 min  
 Delta R.T.: -0.011 min  
 Response: 772402  
 Conc: 9.53 ng/ml

Instrument :  
 ECD\_P  
 ClientSampleId :



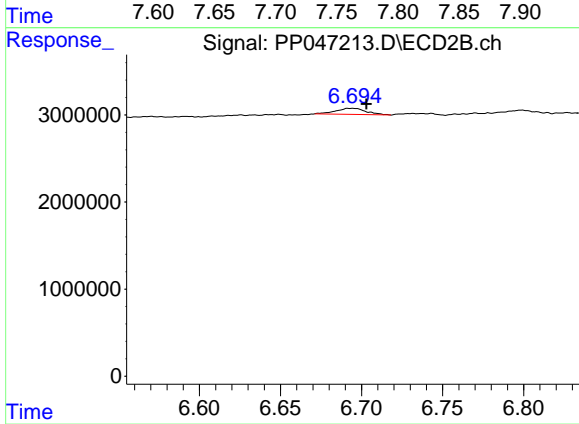
#33 AR-1260-3

R.T.: 6.182 min  
 Delta R.T.: -0.011 min  
 Response: 1460184  
 Conc: 8.55 ng/ml



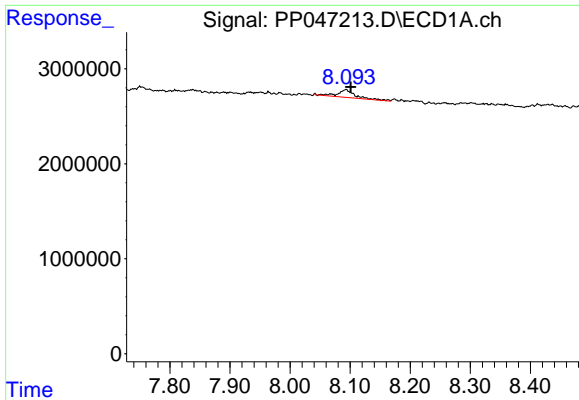
#34 AR-1260-4

R.T.: 7.750 min  
 Delta R.T.: -0.012 min  
 Response: 789964  
 Conc: 9.92 ng/ml



#34 AR-1260-4

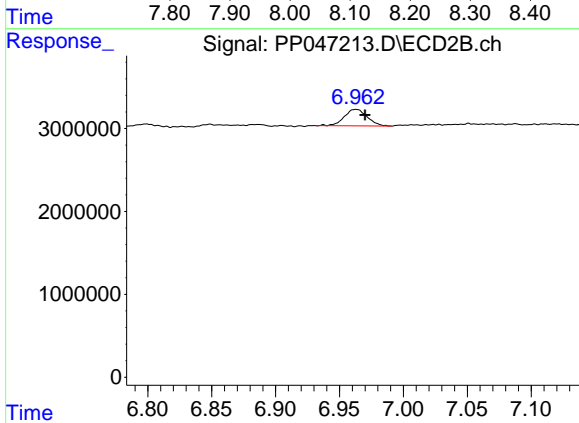
R.T.: 6.694 min  
 Delta R.T.: -0.009 min  
 Response: 897743  
 Conc: 6.18 ng/ml



#35 AR-1260-5

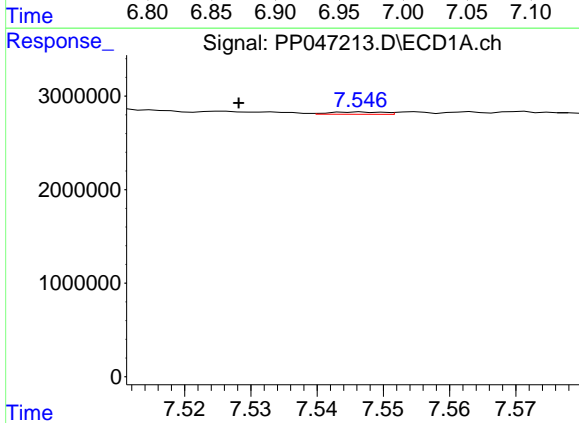
R.T.: 8.093 min  
 Delta R.T.: -0.008 min  
 Response: 1685140  
 Conc: 10.61 ng/ml

Instrument :  
 ECD\_P  
 ClientSampleId :



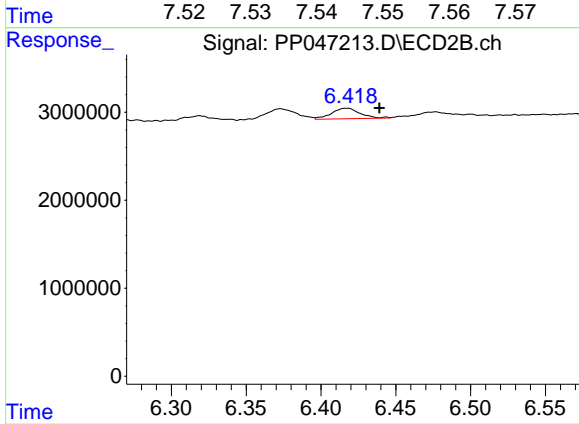
#35 AR-1260-5

R.T.: 6.963 min  
 Delta R.T.: -0.007 min  
 Response: 2494050  
 Conc: 7.10 ng/ml



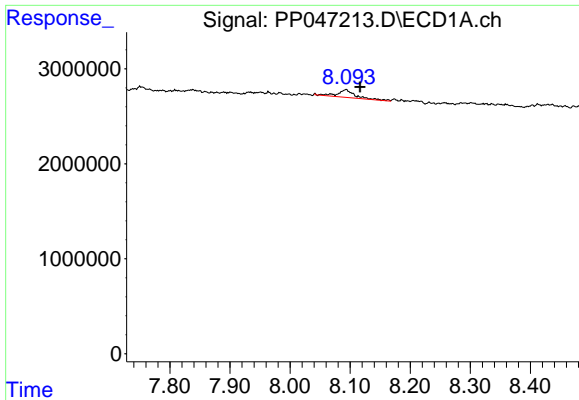
#36 AR-1262-1

R.T.: 7.546 min  
 Delta R.T.: 0.018 min  
 Response: 137365  
 Conc: 1.14 ng/ml



#36 AR-1262-1

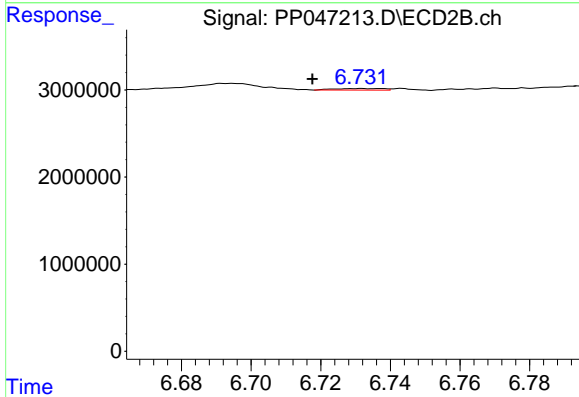
R.T.: 6.417 min  
 Delta R.T.: -0.022 min  
 Response: 1582320  
 Conc: 6.41 ng/ml



#37 AR-1262-2

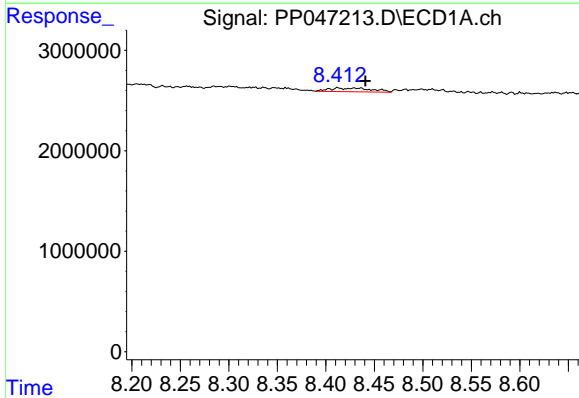
R.T.: 8.093 min  
 Delta R.T.: -0.023 min  
 Response: 1685140  
 Conc: 8.76 ng/ml

Instrument :  
 ECD\_P  
 ClientSampleId :



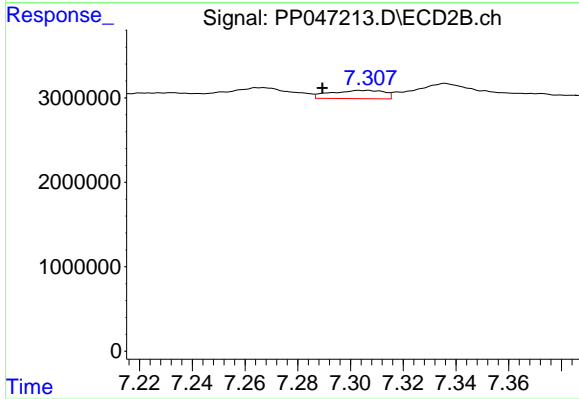
#37 AR-1262-2

R.T.: 6.731 min  
 Delta R.T.: 0.014 min  
 Response: 175403  
 Conc: 0.91 ng/ml



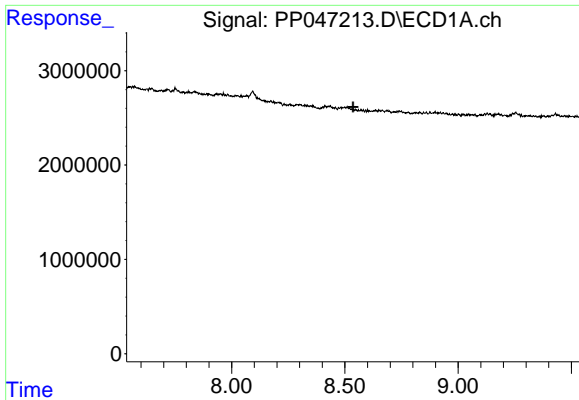
#38 AR-1262-3

R.T.: 8.430 min  
 Delta R.T.: -0.011 min  
 Response: 1117723  
 Conc: 8.32 ng/ml



#38 AR-1262-3

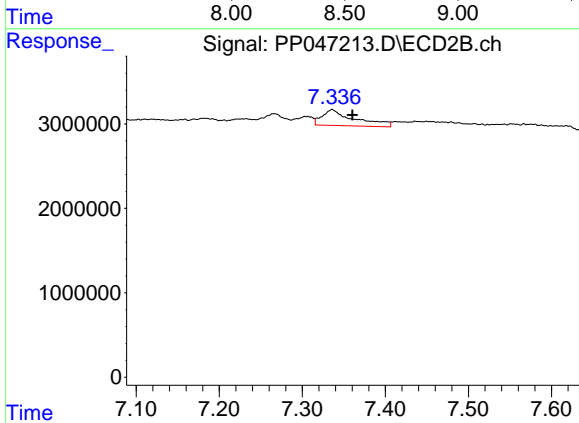
R.T.: 7.305 min  
 Delta R.T.: 0.016 min  
 Response: 1368793  
 Conc: 8.43 ng/ml



#39 AR-1262-4

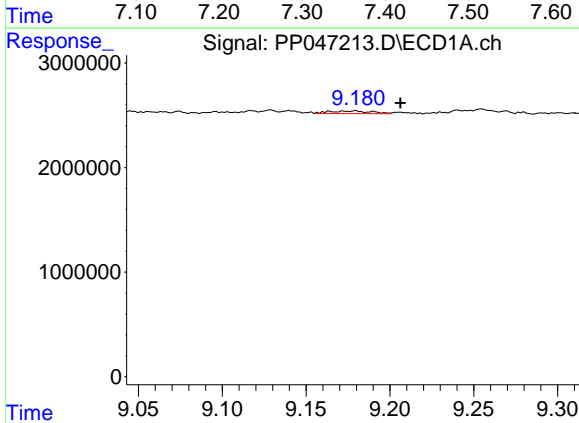
R.T.: 0.000 min  
 Exp R.T.: 8.536 min  
 Response: 0  
 Conc: N.D.

Instrument :  
 ECD\_P  
 ClientSampleId :



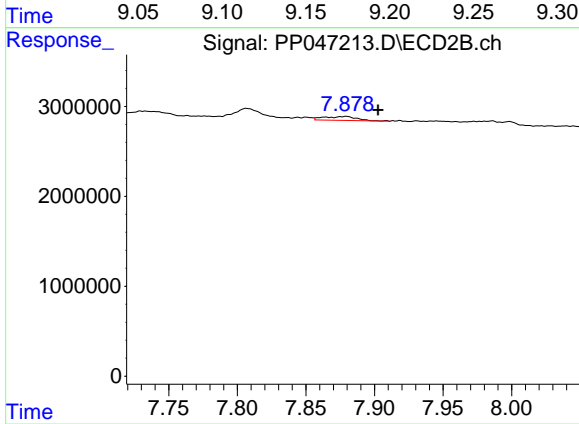
#39 AR-1262-4

R.T.: 7.336 min  
 Delta R.T.: -0.024 min  
 Response: 5092453  
 Conc: 17.78 ng/ml



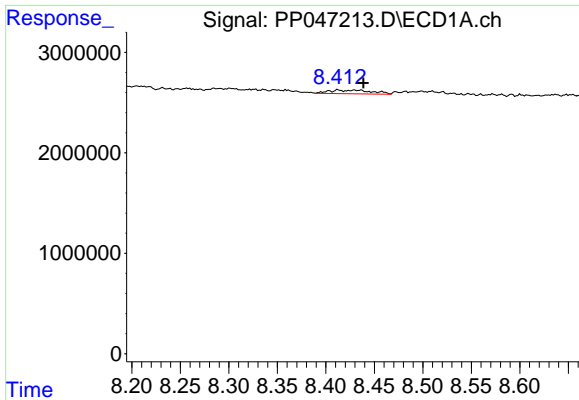
#40 AR-1262-5

R.T.: 9.179 min  
 Delta R.T.: -0.027 min  
 Response: 469767  
 Conc: 6.81 ng/ml



#40 AR-1262-5

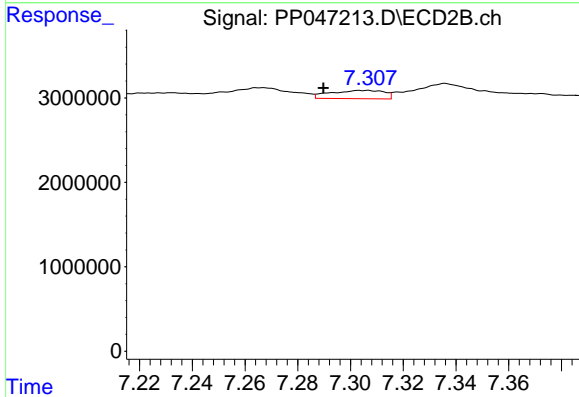
R.T.: 7.879 min  
 Delta R.T.: -0.023 min  
 Response: 721702  
 Conc: 5.50 ng/ml



#41 AR-1268-1

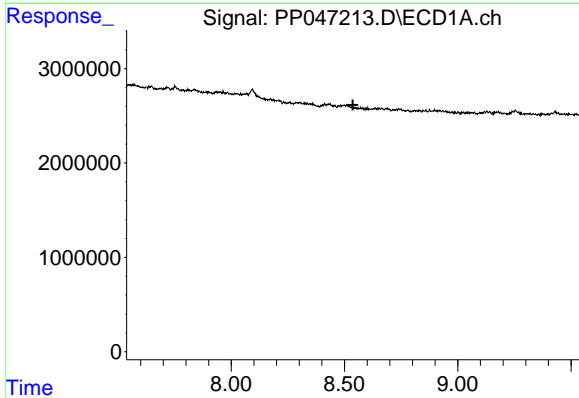
R.T.: 8.430 min  
 Delta R.T.: -0.009 min  
 Response: 1117723  
 Conc: 4.65 ng/ml

Instrument :  
 ECD\_P  
 ClientSampleId :



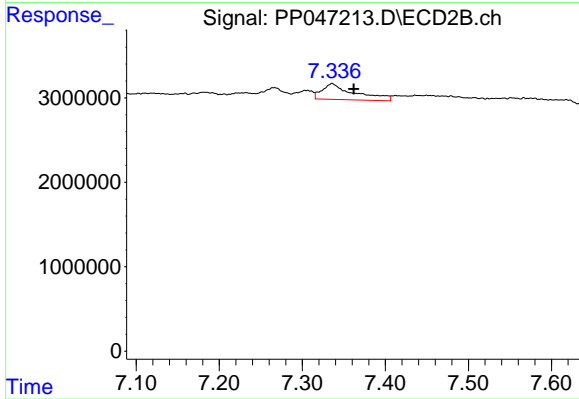
#41 AR-1268-1

R.T.: 7.305 min  
 Delta R.T.: 0.015 min  
 Response: 1368793  
 Conc: 2.86 ng/ml



#42 AR-1268-2

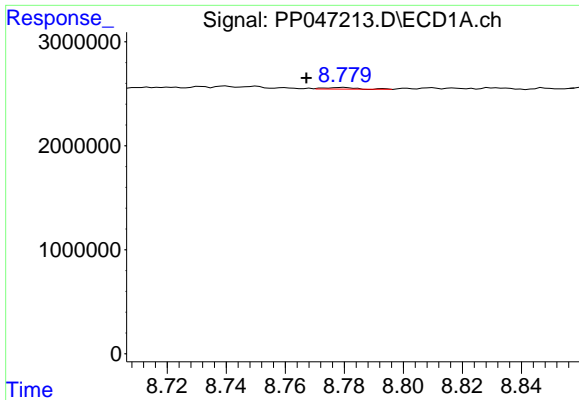
R.T.: 0.000 min  
 Exp R.T. : 8.537 min  
 Response: 0  
 Conc: N.D.



#42 AR-1268-2

R.T.: 7.336 min  
 Delta R.T.: -0.026 min  
 Response: 5092453  
 Conc: 12.02 ng/ml

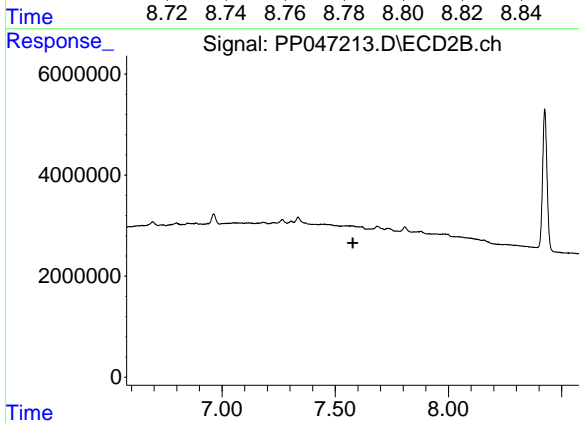




#43 AR-1268-3

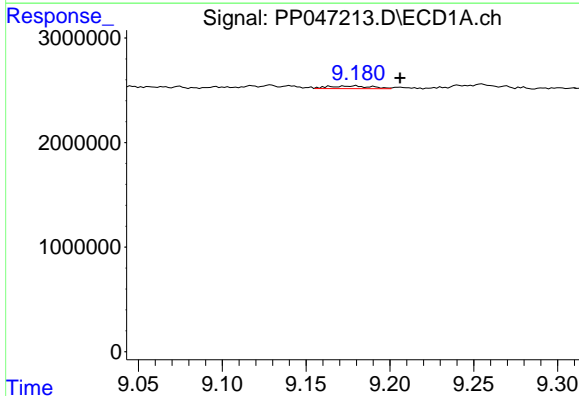
R.T.: 8.779 min  
 Delta R.T.: 0.012 min  
 Response: 121511  
 Conc: 0.63 ng/ml

Instrument :  
 ECD\_P  
 ClientSampleId :



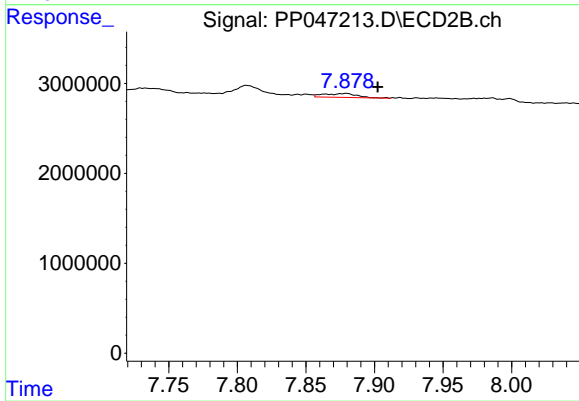
#43 AR-1268-3

R.T.: 0.000 min  
 Exp R.T. : 7.578 min  
 Response: 0  
 Conc: N.D.



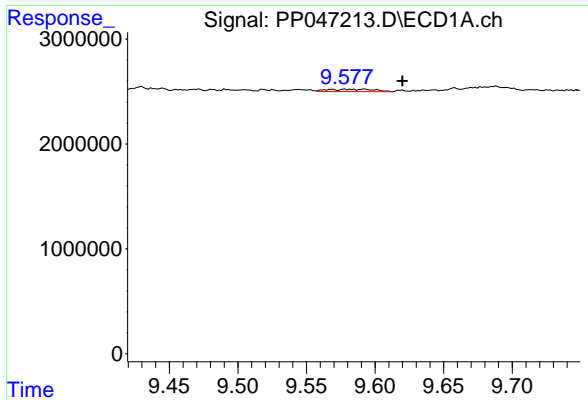
#44 AR-1268-4

R.T.: 9.179 min  
 Delta R.T.: -0.027 min  
 Response: 469767  
 Conc: 6.09 ng/ml



#44 AR-1268-4

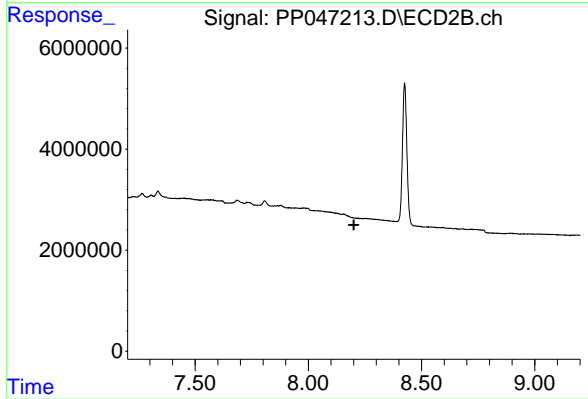
R.T.: 7.879 min  
 Delta R.T.: -0.023 min  
 Response: 721702  
 Conc: 4.91 ng/ml



#45 AR-1268-5

R.T.: 9.592 min  
Delta R.T.: -0.028 min  
Response: 525767  
Conc: 0.94 ng/ml

Instrument :  
ECD\_P  
ClientSampleId :



#45 AR-1268-5

R.T.: 0.000 min  
Exp R.T. : 8.202 min  
Response: 0  
Conc: N.D.