

Data Path : Z:\pestpcbsrv\HPCHEM1\ECD_P\Data\PP050722\
 Data File : PP047183.D
 Signal(s) : Signal #1: ECD1A.ch Signal #2: ECD2B.ch
 Acq On : 08 May 2022 03:49
 Operator : YP\AJ
 Sample : N2619-01
 Misc :
 ALS Vial : 48 Sample Multiplier: 1

Instrument :
 ECD_P
 ClientSampleId :
 SS01-1-2-FT

Integration File signal 1: autoint1.e
 Integration File signal 2: autoint2.e
 Quant Time: May 09 02:37:44 2022
 Quant Method : Z:\pestpcbsrv\HPCHEM1\ECD_P\methods\PP042222.M
 Quant Title : GC EXTRACTABLES
 QLast Update : Fri May 06 10:17:17 2022
 Response via : Initial Calibration
 Integrator: ChemStation

Volume Inj. : 2 µl
 Signal #1 Phase : ZB-MR1 Signal #2 Phase: ZB-MR2
 Signal #1 Info : 30Mx0.32mmx 0.50µ Signal #2 Info : 30M x 0.32mm x 0.25µm

Compound	RT#1	RT#2	Resp#1	Resp#2	ng/ml	ng/ml

System Monitoring Compounds						
1) SA Tetrachlo...	3.852	3.119	54929769	78955324	22.755	24.069
2) SA Decachlor...	9.919	8.426	32668226	58968541	22.201	24.722

Target Compounds

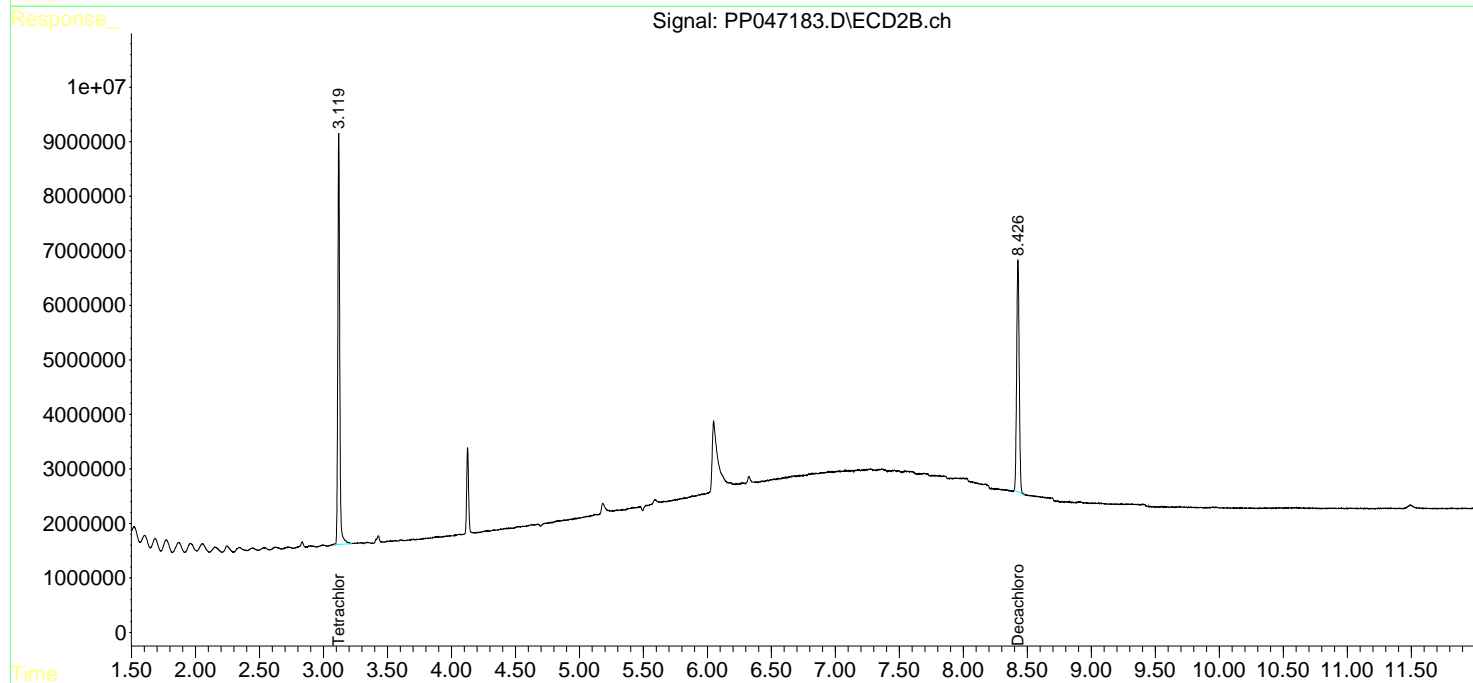
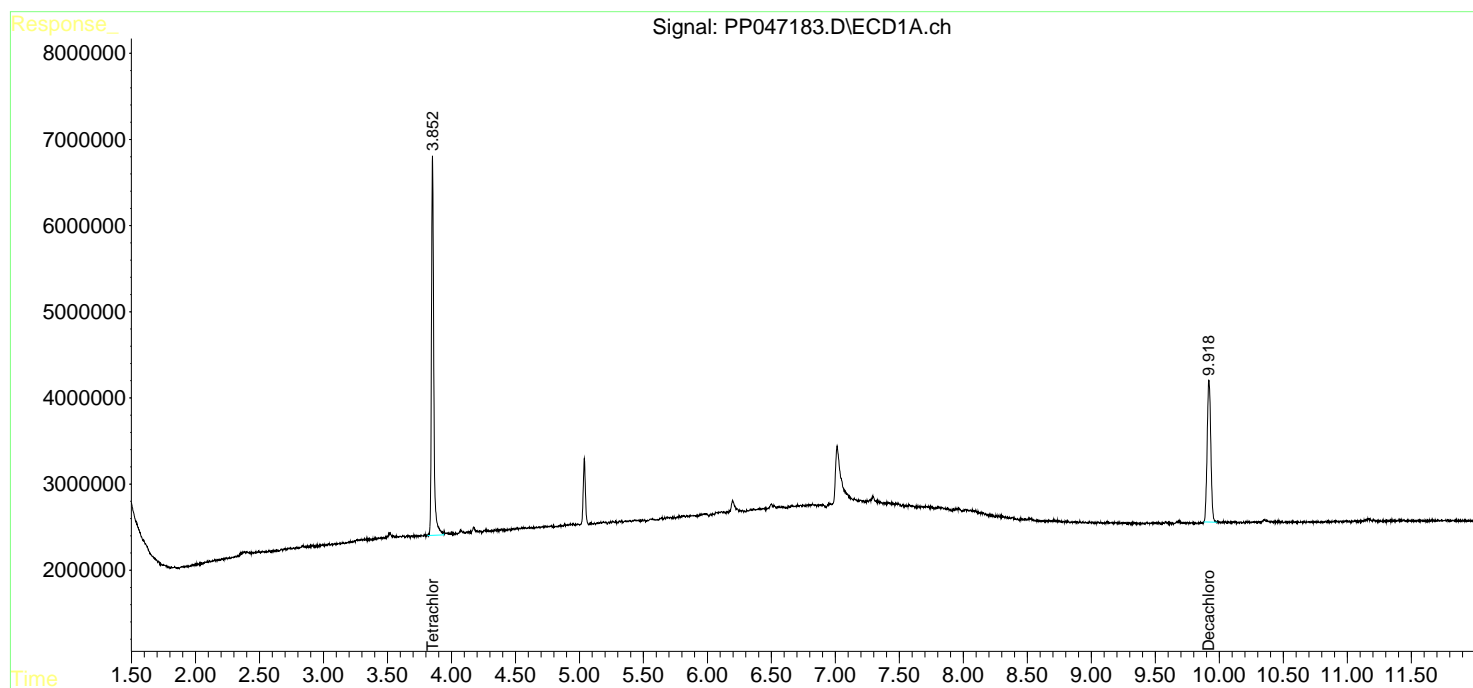
 (f)=RT Delta > 1/2 Window (#)=Amounts differ by > 25% (m)=manual int.

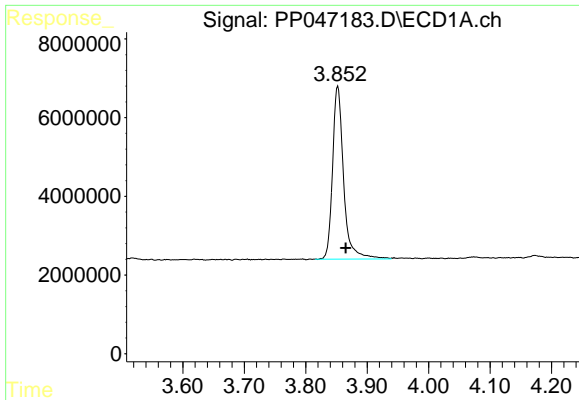
Data Path : Z:\pestpcbsrv\HPCHEM1\ECD_P\Data\PP050722\
Data File : PP047183.D
Signal(s) : Signal #1: ECD1A.ch Signal #2: ECD2B.ch
Acq On : 08 May 2022 03:49
Operator : YP\AJ
Sample : N2619-01
Misc :
ALS Vial : 48 Sample Multiplier: 1

Instrument :
ECD_P
ClientSampleId :
SS01-1-2-FT

Integration File signal 1: autoint1.e
Integration File signal 2: autoint2.e
Quant Time: May 09 02:37:44 2022
Quant Method : Z:\pestpcbsrv\HPCHEM1\ECD_P\methods\PP042222.M
Quant Title : GC EXTRACTABLES
QLast Update : Fri May 06 10:17:17 2022
Response via : Initial Calibration
Integrator: ChemStation

Volume Inj. : 2 µl
Signal #1 Phase : ZB-MR1 Signal #2 Phase: ZB-MR2
Signal #1 Info : 30Mx0.32mmx 0.50µ Signal #2 Info : 30M x 0.32mm x 0.25µm

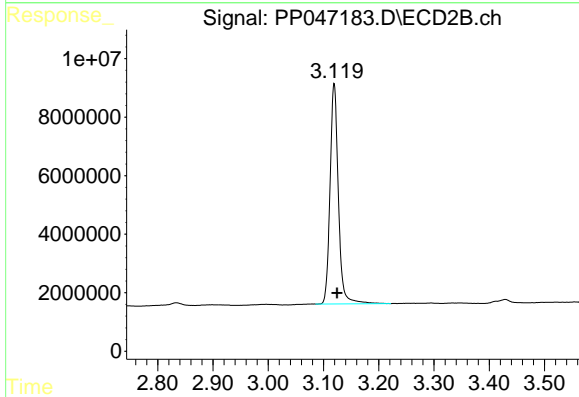




#1 Tetrachloro-m-xylene

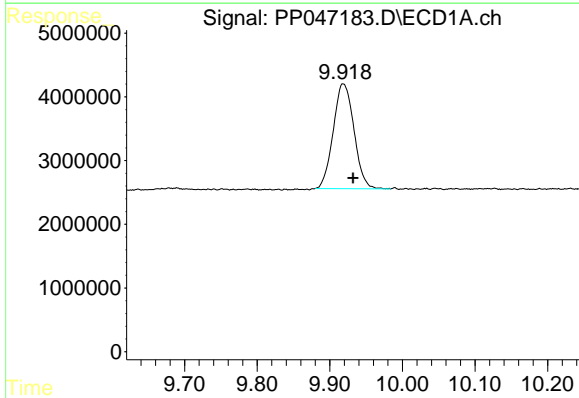
R.T.: 3.852 min
 Delta R.T.: -0.013 min
 Response: 54929769
 Conc: 22.76 ng/ml

Instrument :
 ECD_P
 ClientSampleId :
 SS01-1-2-FT



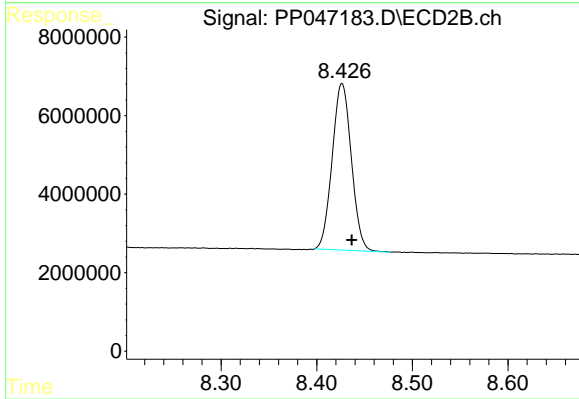
#1 Tetrachloro-m-xylene

R.T.: 3.119 min
 Delta R.T.: -0.005 min
 Response: 78955324
 Conc: 24.07 ng/ml



#2 Decachlorobiphenyl

R.T.: 9.919 min
 Delta R.T.: -0.013 min
 Response: 32668226
 Conc: 22.20 ng/ml



#2 Decachlorobiphenyl

R.T.: 8.426 min
 Delta R.T.: -0.010 min
 Response: 58968541
 Conc: 24.72 ng/ml