

Data Path : Z:\pestpcbsrv\HPCHEM1\ECD_P\Data\PP050722\
 Data File : PP047193.D
 Signal(s) : Signal #1: ECD1A.ch Signal #2: ECD2B.ch
 Acq On : 08 May 2022 06:50
 Operator : YP\AJ
 Sample : AR1242CCC500
 Misc :
 ALS Vial : 4 Sample Multiplier: 1

Instrument :
 ECD_P
 ClientSampleId :
 AR1242CCC500

Integration File signal 1: autoint1.e
 Integration File signal 2: autoint2.e
 Quant Time: May 09 02:42:47 2022
 Quant Method : Z:\pestpcbsrv\HPCHEM1\ECD_P\methods\PP042222.M
 Quant Title : GC EXTRACTABLES
 QLast Update : Fri May 06 10:17:17 2022
 Response via : Initial Calibration
 Integrator: ChemStation

Volume Inj. : 2 µl
 Signal #1 Phase : ZB-MR1 Signal #2 Phase: ZB-MR2
 Signal #1 Info : 30Mx0.32mmx 0.50µ Signal #2 Info : 30M x 0.32mm x 0.25µm

Compound	RT#1	RT#2	Resp#1	Resp#2	ng/ml	ng/ml

System Monitoring Compounds						
1) SA Tetrachlo...	3.853	3.120	139.9E6	194.1E6	57.959	59.161
2) SA Decachlor...	9.919	8.427	80888509	145.0E6	54.970	60.785
Target Compounds						
16) L4 AR-1242-1	5.095	4.248	30934375	52167676	487.893	529.171
17) L4 AR-1242-2	5.118	4.266	45975110	77524573	482.574	535.236
18) L4 AR-1242-3	5.184	4.449	27499271	41851493	459.352	563.130
19) L4 AR-1242-4	5.289	4.540	23063583	39749160	456.014	556.555
20) L4 AR-1242-5	6.086	5.094	20507834	47829721	406.976	495.694

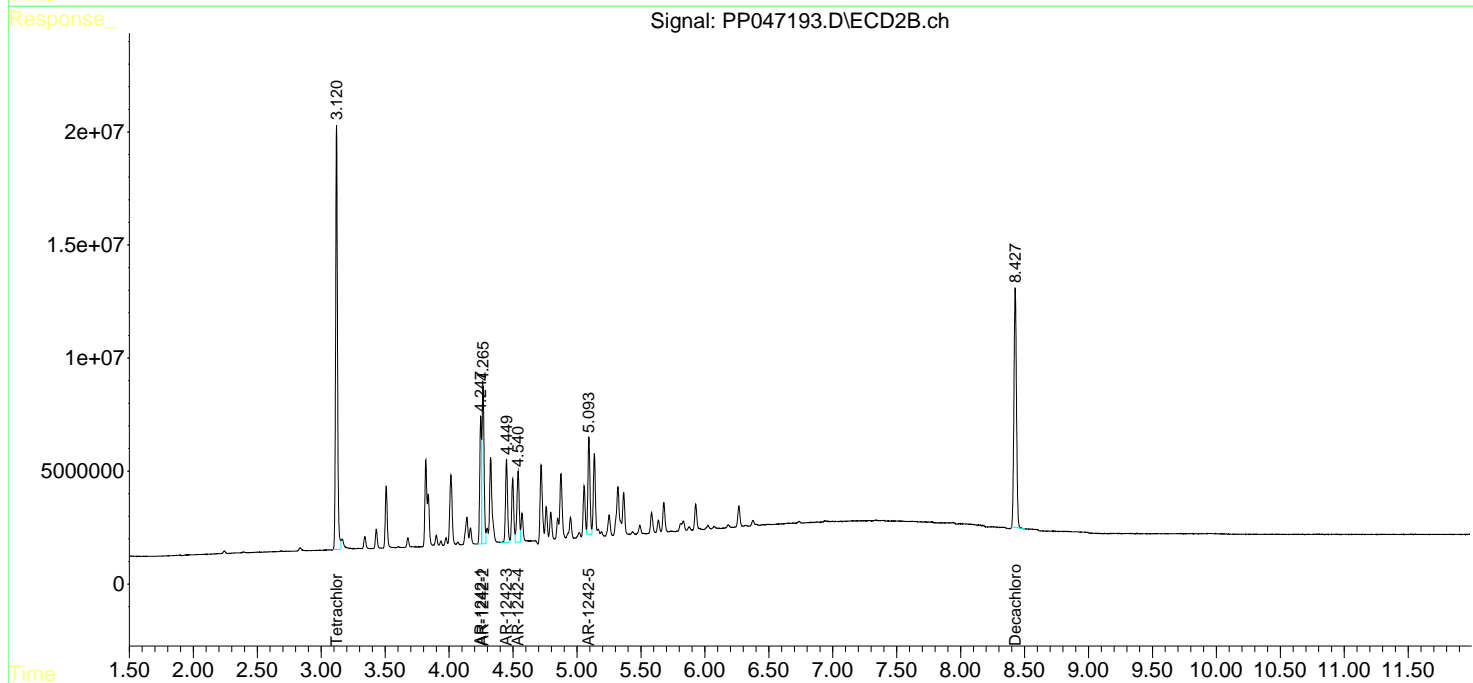
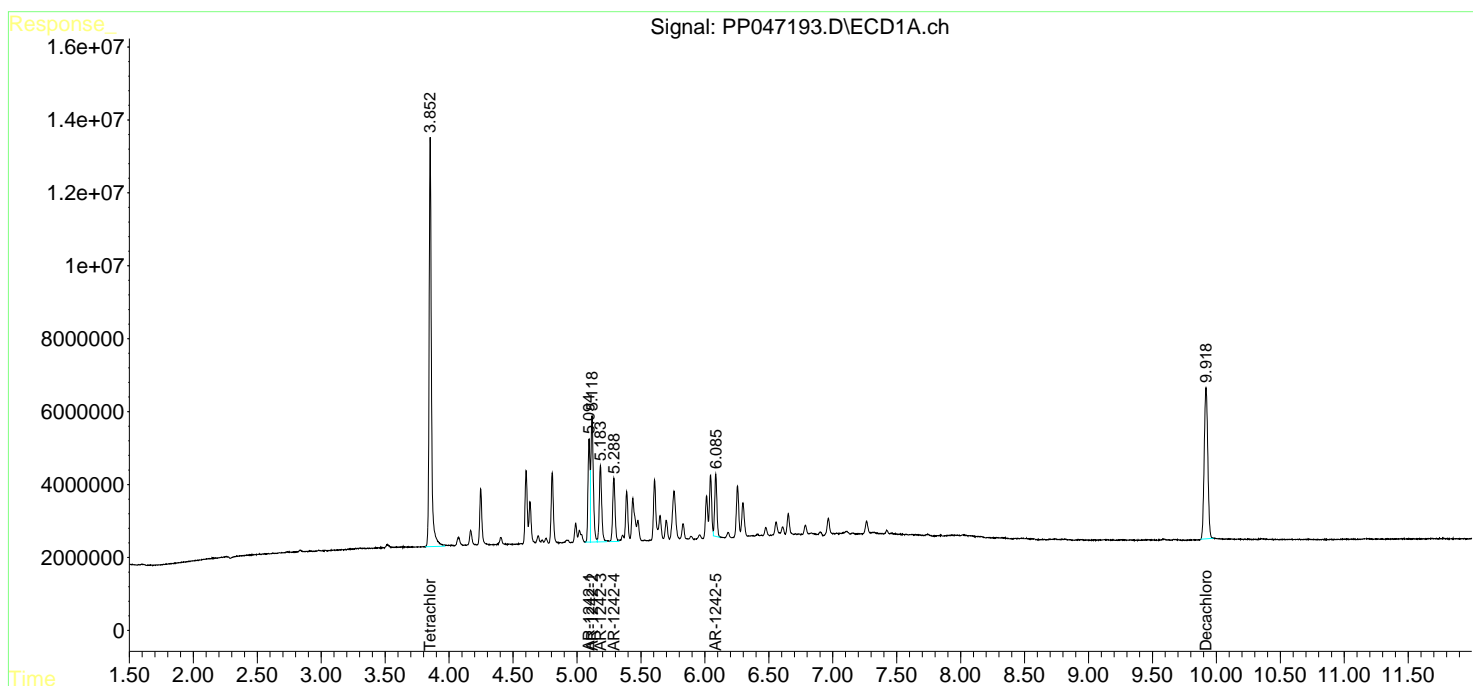
(f)=RT Delta > 1/2 Window (#)=Amounts differ by > 25% (m)=manual int.

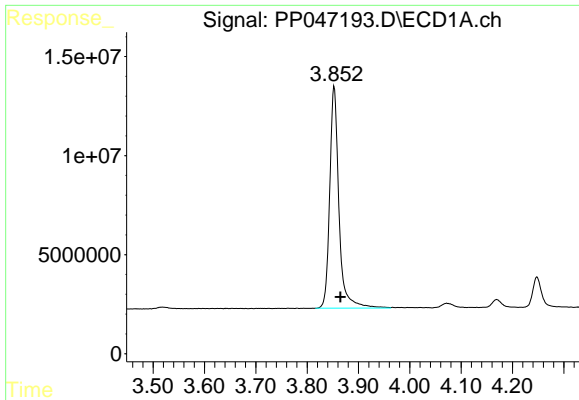
Data Path : Z:\pestpcbsrv\HPCHEM1\ECD_P\Data\PP050722\
 Data File : PP047193.D
 Signal(s) : Signal #1: ECD1A.ch Signal #2: ECD2B.ch
 Acq On : 08 May 2022 06:50
 Operator : YP\AJ
 Sample : AR1242CCC500
 Misc :
 ALS Vial : 4 Sample Multiplier: 1

Instrument :
 ECD_P
 ClientSampleId :
 AR1242CCC500

Integration File signal 1: autoint1.e
 Integration File signal 2: autoint2.e
 Quant Time: May 09 02:42:47 2022
 Quant Method : Z:\pestpcbsrv\HPCHEM1\ECD_P\methods\PP042222.M
 Quant Title : GC EXTRACTABLES
 QLast Update : Fri May 06 10:17:17 2022
 Response via : Initial Calibration
 Integrator: ChemStation

Volume Inj. : 2 µl
 Signal #1 Phase : ZB-MR1 Signal #2 Phase: ZB-MR2
 Signal #1 Info : 30Mx0.32mmx 0.50µ Signal #2 Info : 30M x 0.32mm x 0.25µm

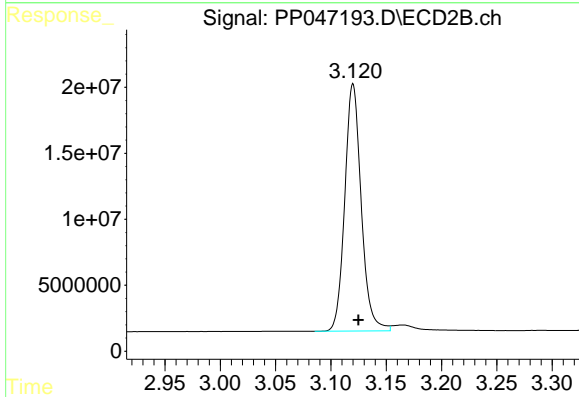




#1 Tetrachloro-m-xylene

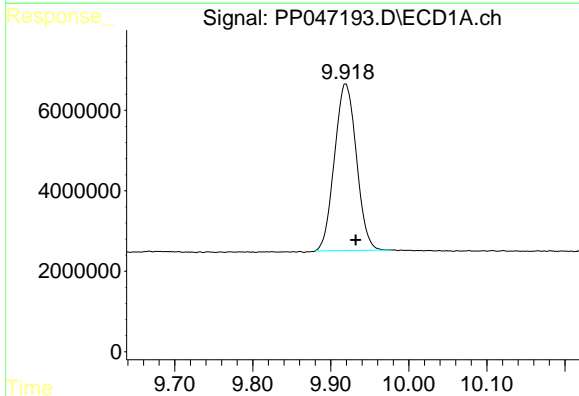
R.T.: 3.853 min
 Delta R.T.: -0.012 min
 Response: 139908709
 Conc: 57.96 ng/ml

Instrument :
 ECD_P
 ClientSampleId :
 AR1242CCC500



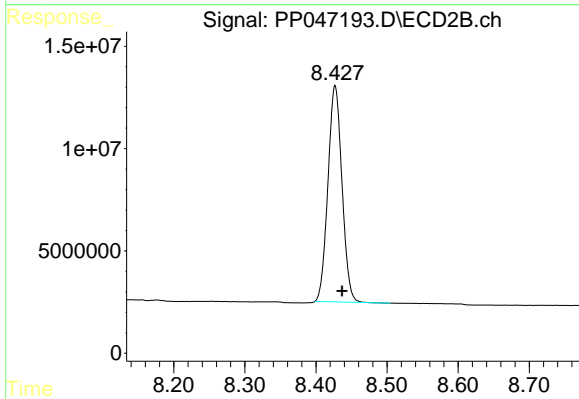
#1 Tetrachloro-m-xylene

R.T.: 3.120 min
 Delta R.T.: -0.005 min
 Response: 194068558
 Conc: 59.16 ng/ml



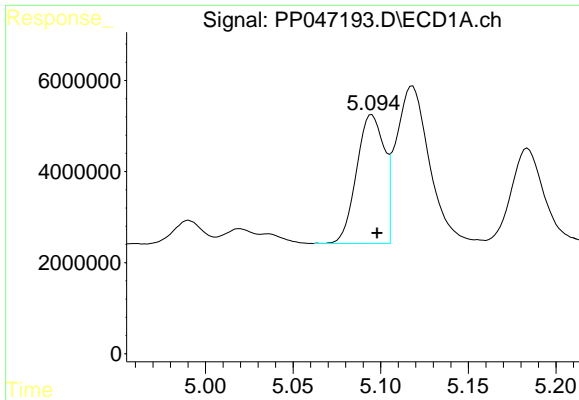
#2 Decachlorobiphenyl

R.T.: 9.919 min
 Delta R.T.: -0.013 min
 Response: 80888509
 Conc: 54.97 ng/ml



#2 Decachlorobiphenyl

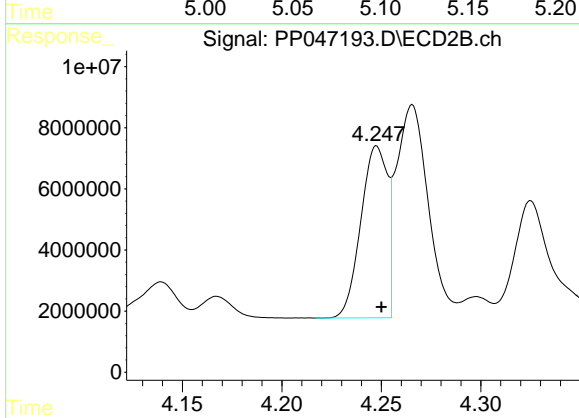
R.T.: 8.427 min
 Delta R.T.: -0.010 min
 Response: 144990554
 Conc: 60.78 ng/ml



#16 AR-1242-1

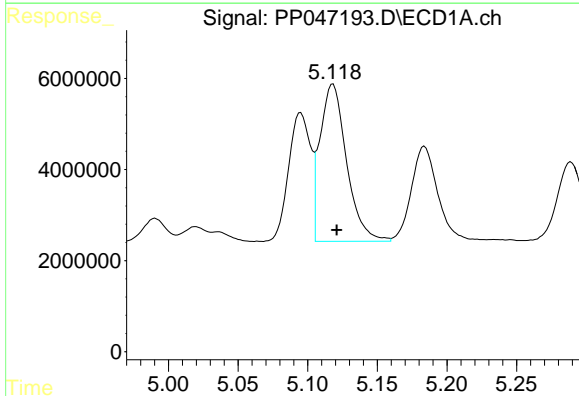
R.T.: 5.095 min
 Delta R.T.: -0.003 min
 Response: 30934375
 Conc: 487.89 ng/ml

Instrument :
 ECD_P
 ClientSampleId :
 AR1242CCC500



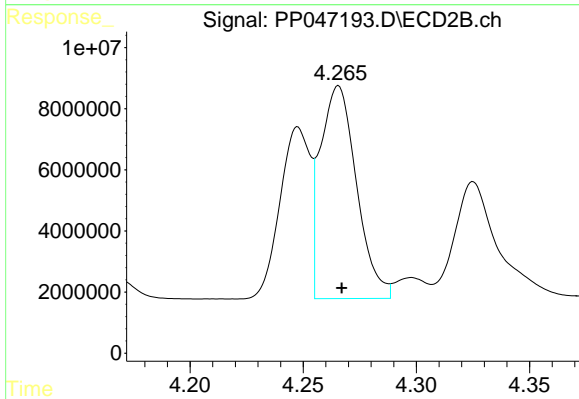
#16 AR-1242-1

R.T.: 4.248 min
 Delta R.T.: -0.002 min
 Response: 52167676
 Conc: 529.17 ng/ml



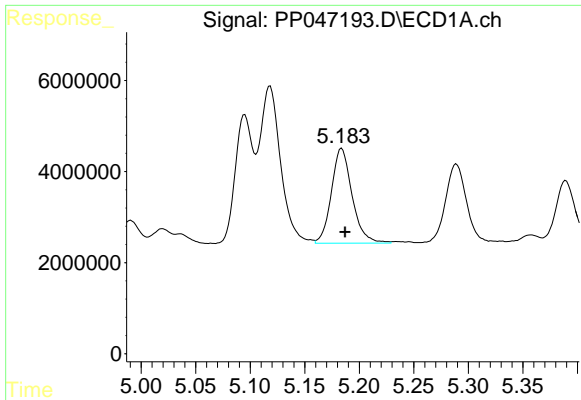
#17 AR-1242-2

R.T.: 5.118 min
 Delta R.T.: -0.003 min
 Response: 45975110
 Conc: 482.57 ng/ml



#17 AR-1242-2

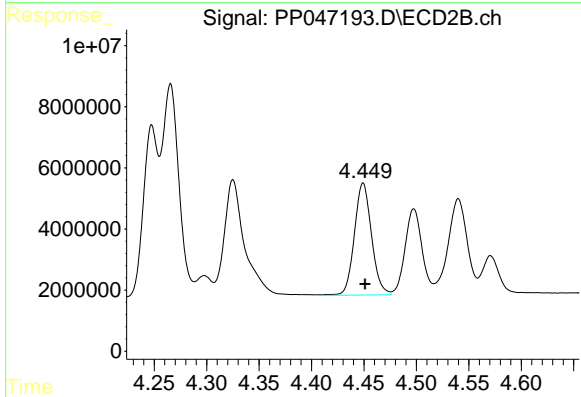
R.T.: 4.266 min
 Delta R.T.: -0.001 min
 Response: 77524573
 Conc: 535.24 ng/ml



#18 AR-1242-3

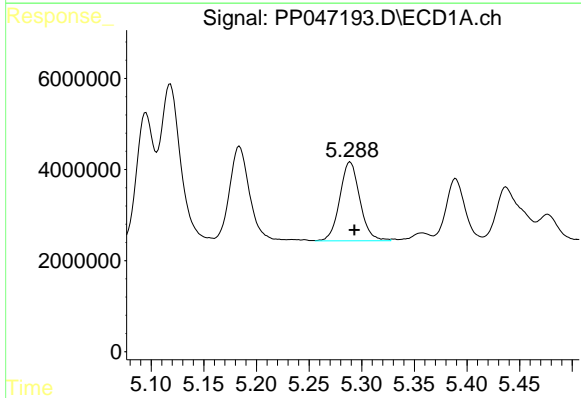
R.T.: 5.184 min
 Delta R.T.: -0.003 min
 Response: 27499271
 Conc: 459.35 ng/ml

Instrument :
 ECD_P
 ClientSampleId :
 AR1242CCC500



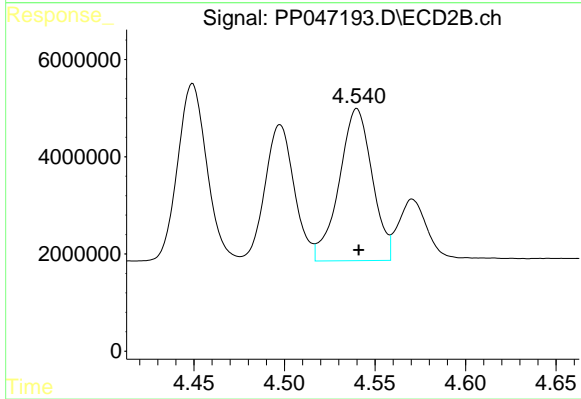
#18 AR-1242-3

R.T.: 4.449 min
 Delta R.T.: -0.002 min
 Response: 41851493
 Conc: 563.13 ng/ml



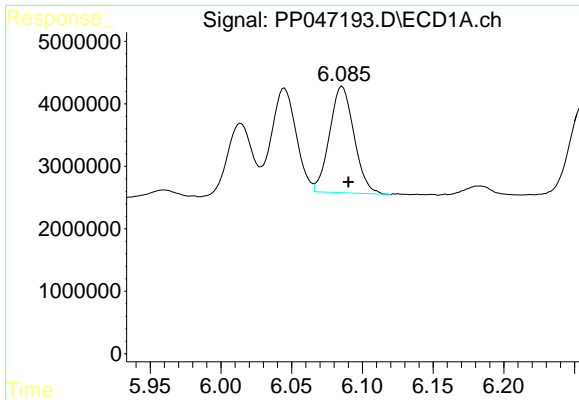
#19 AR-1242-4

R.T.: 5.289 min
 Delta R.T.: -0.004 min
 Response: 23063583
 Conc: 456.01 ng/ml



#19 AR-1242-4

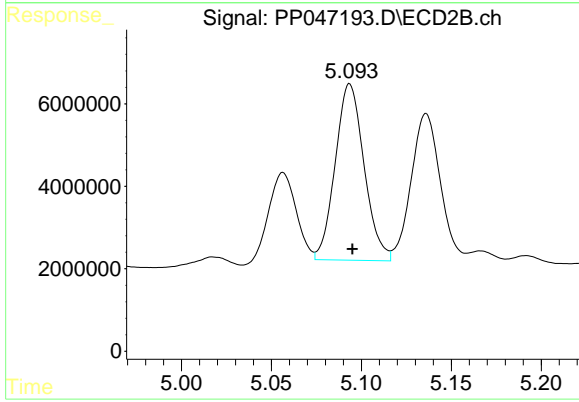
R.T.: 4.540 min
 Delta R.T.: 0.000 min
 Response: 39749160
 Conc: 556.55 ng/ml



#20 AR-1242-5

R.T.: 6.086 min
Delta R.T.: -0.004 min
Response: 20507834
Conc: 406.98 ng/ml

Instrument :
ECD_P
ClientSampleId :
AR1242CCC500



#20 AR-1242-5

R.T.: 5.094 min
Delta R.T.: -0.001 min
Response: 47829721
Conc: 495.69 ng/ml