

Data Path : Z:\pestpcbsrv\HPCHEM1\ECD_P\Data\PP050722\
 Data File : PP047209.D
 Signal(s) : Signal #1: ECD1A.ch Signal #2: ECD2B.ch
 Acq On : 08 May 2022 12:09
 Operator : YP\AJ
 Sample : AR1248CCC500
 Misc :
 ALS Vial : 5 Sample Multiplier: 1

Instrument :
 ECD_P
ClientSampleId :
 AR1248CCC500

**Manual Integrations
 APPROVED**

Reviewed By :Yogesh Patel 05/09/2022
 Supervised By :mohammad ahmed 05/09/2022

Integration File signal 1: autoint1.e
 Integration File signal 2: autoint2.e
 Quant Time: May 09 02:49:13 2022
 Quant Method : Z:\pestpcbsrv\HPCHEM1\ECD_P\methods\PP042222.M
 Quant Title : GC EXTRACTABLES
 QLast Update : Fri May 06 10:17:17 2022
 Response via : Initial Calibration
 Integrator: ChemStation

Volume Inj. : 2 µl
 Signal #1 Phase : ZB-MR1 Signal #2 Phase: ZB-MR2
 Signal #1 Info : 30Mx0.32mmx 0.50µ Signal #2 Info : 30M x 0.32mm x 0.25µm

Compound	RT#1	RT#2	Resp#1	Resp#2	ng/ml	ng/ml

System Monitoring Compounds						
1) SA Tetrachlo...	3.853	3.120	141.5E6	203.0E6	58.621	61.891
2) SA Decachlor...	9.920	8.426	83514138	149.7E6	56.754	62.776
Target Compounds						
21) L5 AR-1248-1	5.095f	4.247f	25710908	39688262	615.166m	577.570m
22) L5 AR-1248-2	5.390f	4.497f	32982835	56692927	558.050	606.392
23) L5 AR-1248-3	5.607f	4.539f	38112810	57175428	545.627	585.679m
24) L5 AR-1248-4	6.046f	4.720f	39563211	68081786	515.943	578.348
25) L5 AR-1248-5	6.086f	5.136f	37819383	66434790	486.244	545.170m

(f)=RT Delta > 1/2 Window (#)=Amounts differ by > 25% (m)=manual int.

Data Path : Z:\pestpcbsrv\HPCHEM1\ECD_P\Data\PP050722\
 Data File : PP047209.D
 Signal(s) : Signal #1: ECD1A.ch Signal #2: ECD2B.ch
 Acq On : 08 May 2022 12:09
 Operator : YP\AJ
 Sample : AR1248CCC500
 Misc :
 ALS Vial : 5 Sample Multiplier: 1

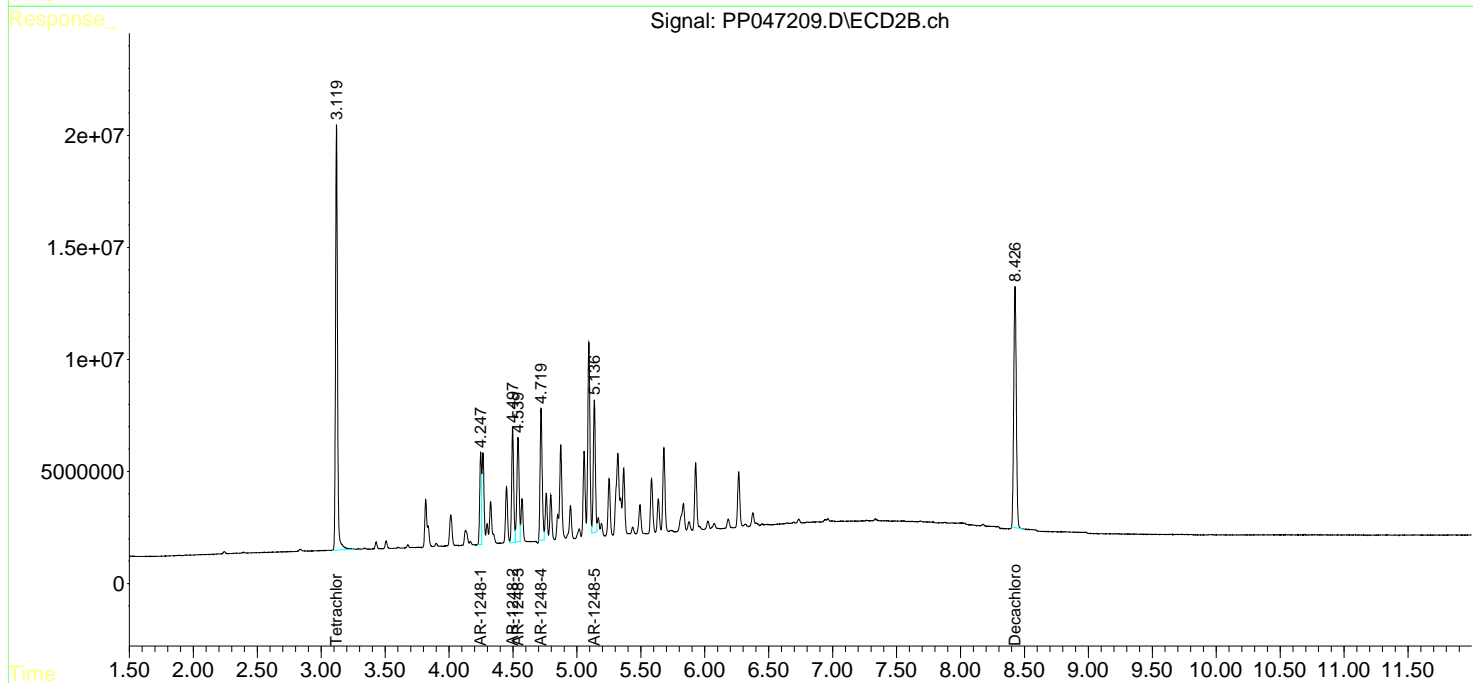
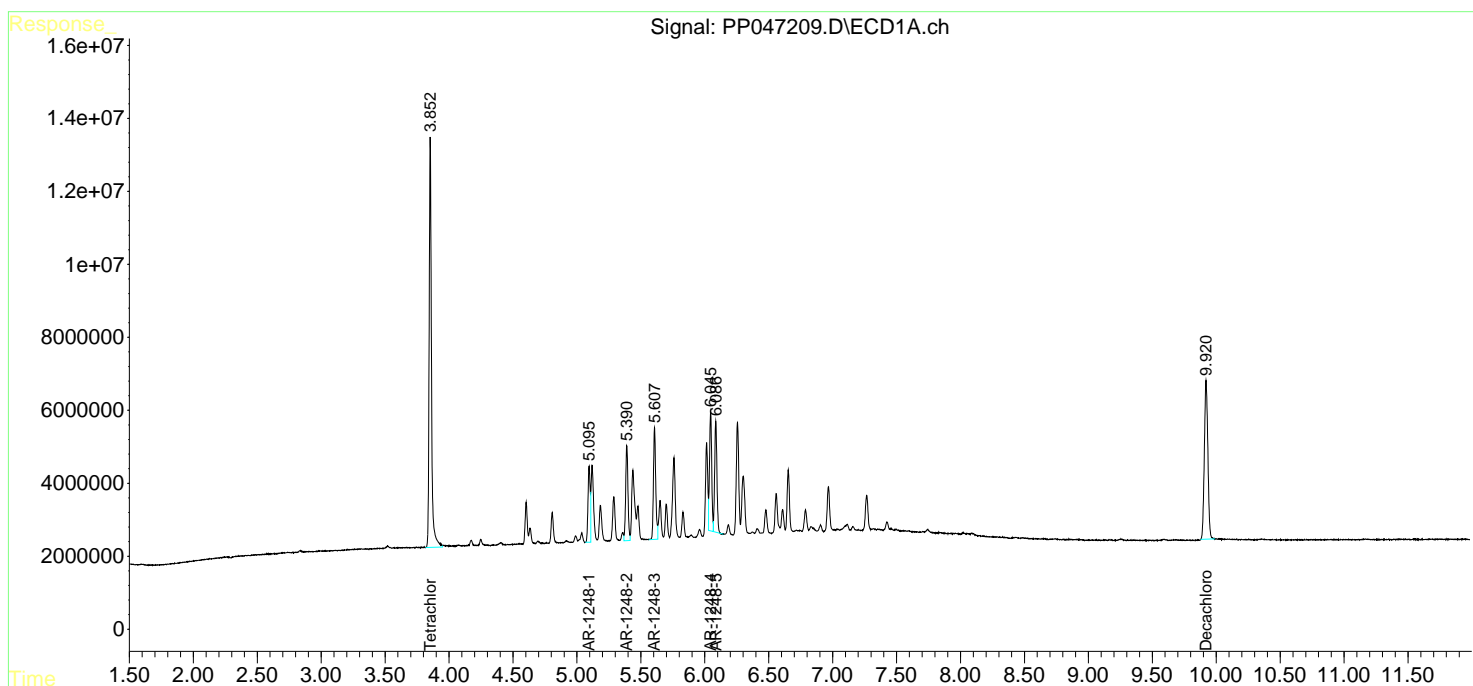
Instrument :
 ECD_P
 ClientSampleId :
 AR1248CCC500

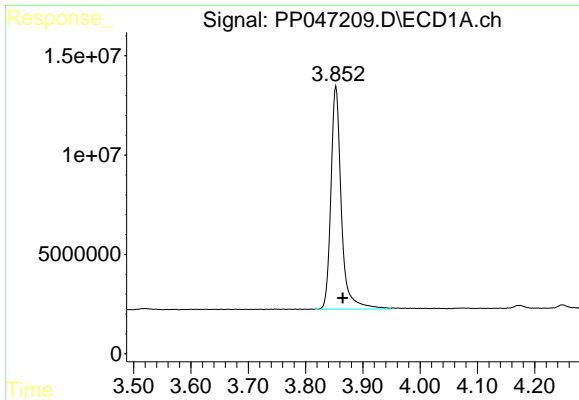
Manual Integrations
APPROVED

Reviewed By :Yogesh Patel 05/09/2022
 Supervised By :mohammad ahmed 05/09/2022

Integration File signal 1: autoint1.e
 Integration File signal 2: autoint2.e
 Quant Time: May 09 02:49:13 2022
 Quant Method : Z:\pestpcbsrv\HPCHEM1\ECD_P\methods\PP042222.M
 Quant Title : GC EXTRACTABLES
 QLast Update : Fri May 06 10:17:17 2022
 Response via : Initial Calibration
 Integrator: ChemStation

Volume Inj. : 2 µl
 Signal #1 Phase : ZB-MR1 Signal #2 Phase: ZB-MR2
 Signal #1 Info : 30Mx0.32mmx 0.50µ Signal #2 Info : 30M x 0.32mm x 0.25µm



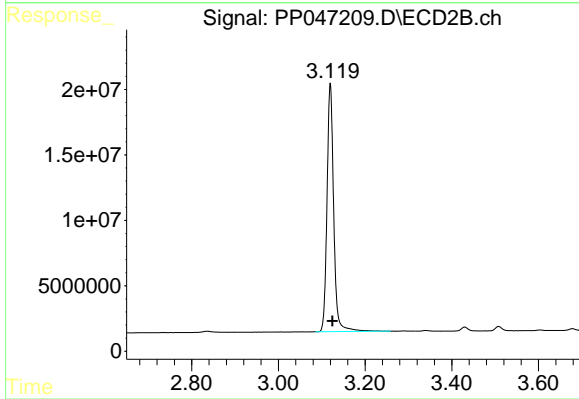


#1 Tetrachloro-m-xylene
 R.T.: 3.853 min
 Delta R.T.: -0.012 min
 Response: 141507113
 Conc: 58.62 ng/ml

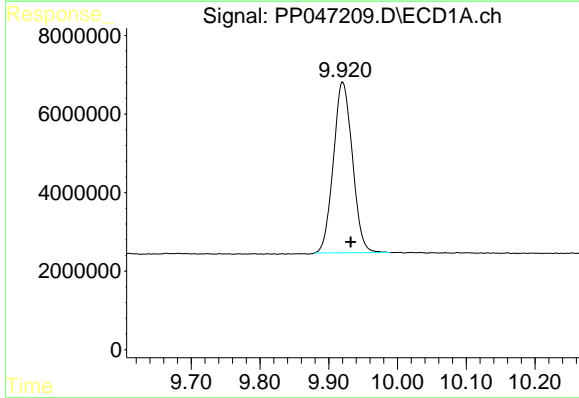
Instrument :
 ECD_P
 ClientSampleId :
 AR1248CCC500

Manual Integrations
 APPROVED

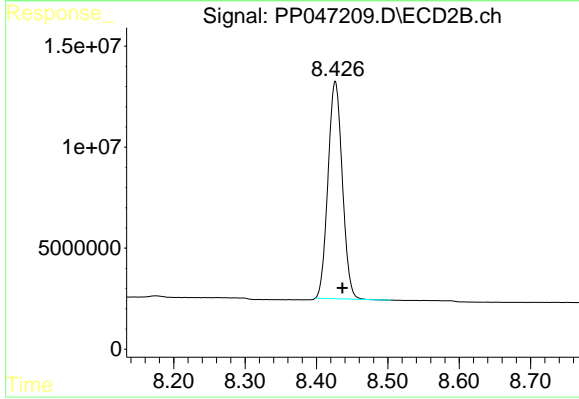
Reviewed By :Yogesh Patel 05/09/2022
 Supervised By :mohammad ahmed 05/09/2022



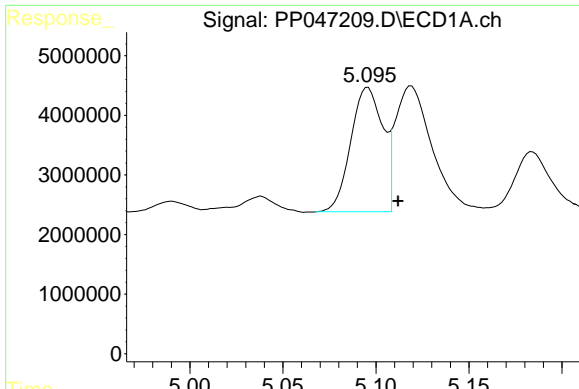
#1 Tetrachloro-m-xylene
 R.T.: 3.120 min
 Delta R.T.: -0.005 min
 Response: 203026222
 Conc: 61.89 ng/ml



#2 Decachlorobiphenyl
 R.T.: 9.920 min
 Delta R.T.: -0.012 min
 Response: 83514138
 Conc: 56.75 ng/ml



#2 Decachlorobiphenyl
 R.T.: 8.426 min
 Delta R.T.: -0.010 min
 Response: 149741310
 Conc: 62.78 ng/ml

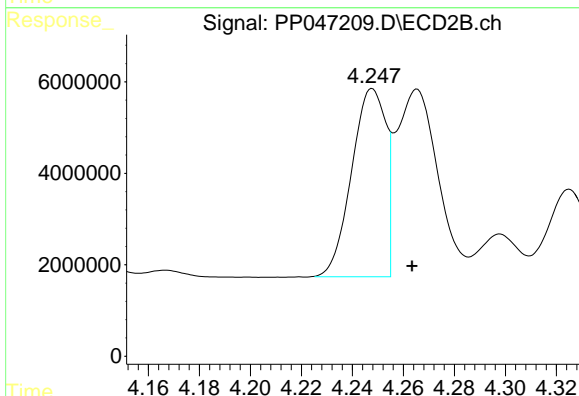


#21 AR-1248-1

R.T.: 5.095 min
 Delta R.T.: -0.017 min
 Response: 25710908
 Conc: 615.17 ng/ml

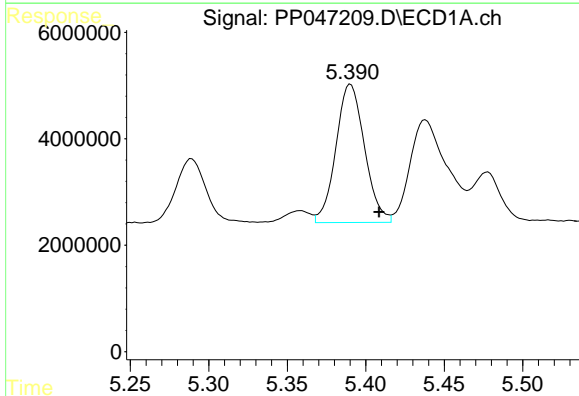
Instrument :
 ECD_P
ClientSampleId :
 AR1248CCC500

Manual Integrations
APPROVED
 Reviewed By :Yogesh Patel 05/09/2022
 Supervised By :mohammad ahmed 05/09/2022



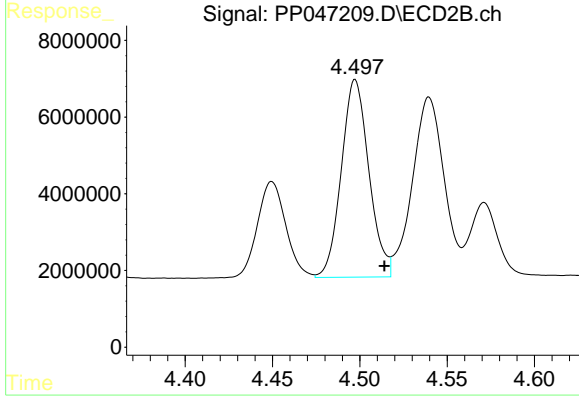
#21 AR-1248-1

R.T.: 4.247 min
 Delta R.T.: -0.016 min
 Response: 39688262
 Conc: 577.57 ng/ml m



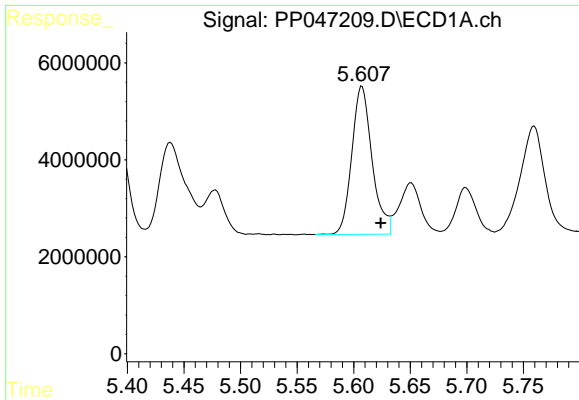
#22 AR-1248-2

R.T.: 5.390 min
 Delta R.T.: -0.018 min
 Response: 32982835
 Conc: 558.05 ng/ml



#22 AR-1248-2

R.T.: 4.497 min
 Delta R.T.: -0.017 min
 Response: 56692927
 Conc: 606.39 ng/ml



#23 AR-1248-3

R.T.: 5.607 min
 Delta R.T.: -0.017 min
 Response: 38112810
 Conc: 545.63 ng/ml

Instrument :

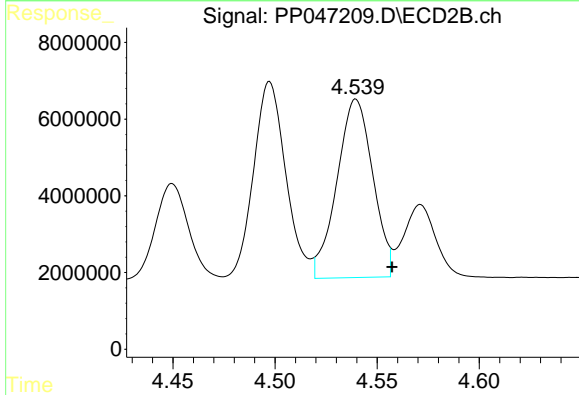
ECD_P

ClientSampleId :

AR1248CCC500

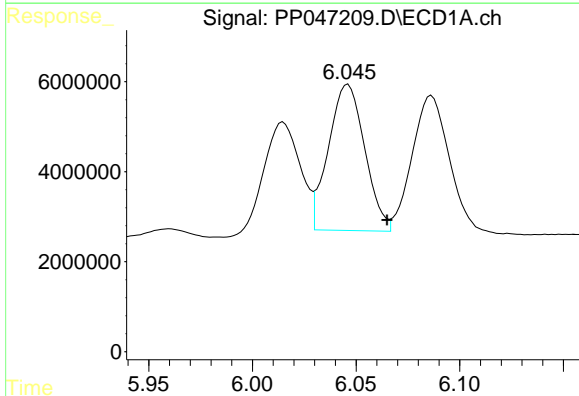
Manual Integrations
 APPROVED

Reviewed By :Yogesh Patel 05/09/2022
 Supervised By :mohammad ahmed 05/09/2022



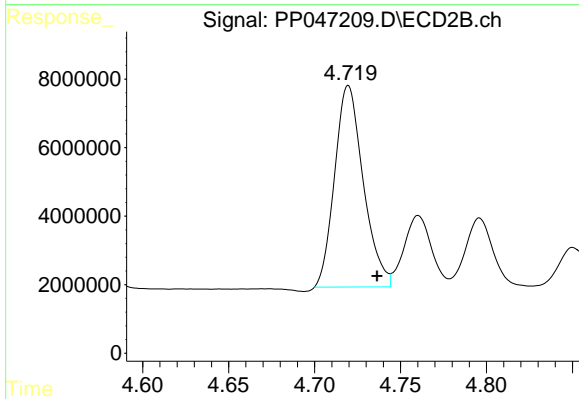
#23 AR-1248-3

R.T.: 4.539 min
 Delta R.T.: -0.018 min
 Response: 57175428
 Conc: 585.68 ng/ml m



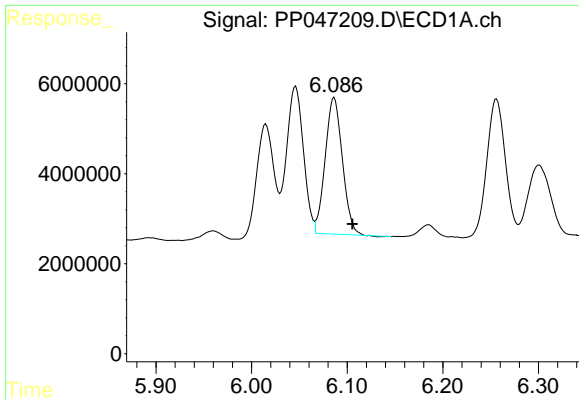
#24 AR-1248-4

R.T.: 6.046 min
 Delta R.T.: -0.019 min
 Response: 39563211
 Conc: 515.94 ng/ml



#24 AR-1248-4

R.T.: 4.720 min
 Delta R.T.: -0.017 min
 Response: 68081786
 Conc: 578.35 ng/ml



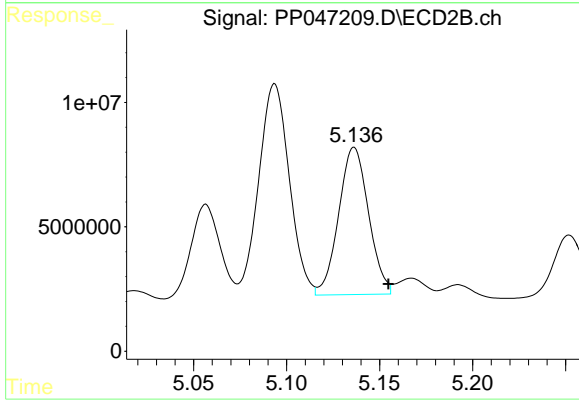
#25 AR-1248-5

R.T.: 6.086 min
 Delta R.T.: -0.019 min
 Response: 37819383
 Conc: 486.24 ng/ml

Instrument :
 ECD_P
 ClientSampleId :
 AR1248CCC500

Manual Integrations
 APPROVED

Reviewed By :Yogesh Patel 05/09/2022
 Supervised By :mohammad ahmed 05/09/2022



#25 AR-1248-5

R.T.: 5.136 min
 Delta R.T.: -0.019 min
 Response: 66434790
 Conc: 545.17 ng/ml m