

Data Path : Z:\pestpcbsrv\HPCHEM1\ECD_P\Data\PP050722\
 Data File : PP047210.D
 Signal(s) : Signal #1: ECD1A.ch Signal #2: ECD2B.ch
 Acq On : 08 May 2022 12:24
 Operator : YP\AJ
 Sample : AR1254CCC500
 Misc :
 ALS Vial : 6 Sample Multiplier: 1

Instrument :
 ECD_P
 ClientSampleId :
 AR1254CCC500

Integration File signal 1: autoint1.e
 Integration File signal 2: autoint2.e
 Quant Time: May 09 02:49:38 2022
 Quant Method : Z:\pestpcbsrv\HPCHEM1\ECD_P\methods\PP042222.M
 Quant Title : GC EXTRACTABLES
 QLast Update : Fri May 06 10:17:17 2022
 Response via : Initial Calibration
 Integrator: ChemStation

Volume Inj. : 2 µl
 Signal #1 Phase : ZB-MR1 Signal #2 Phase: ZB-MR2
 Signal #1 Info : 30Mx0.32mmx 0.50µ Signal #2 Info : 30M x 0.32mm x 0.25µm

Compound	RT#1	RT#2	Resp#1	Resp#2	ng/ml	ng/ml

System Monitoring Compounds						
1) SA Tetrachlo...	3.853	3.120	133.2E6	188.4E6	55.165	57.419
2) SA Decachlor...	9.919	8.426	78161350	140.3E6	53.116	58.836
Target Compounds						
26) L6 AR-1254-1	6.016	5.092	30761069	102.0E6	529.581	528.564
27) L6 AR-1254-2	6.253	5.252	61394392	88244305	498.154	529.922
28) L6 AR-1254-3	6.652	5.680	61067577	135.3E6	461.518	542.727
29) L6 AR-1254-4	6.965	5.929	48864566	97766363	491.639	569.820
30) L6 AR-1254-5	7.424	6.376	47592203	129.1E6	541.111	591.809

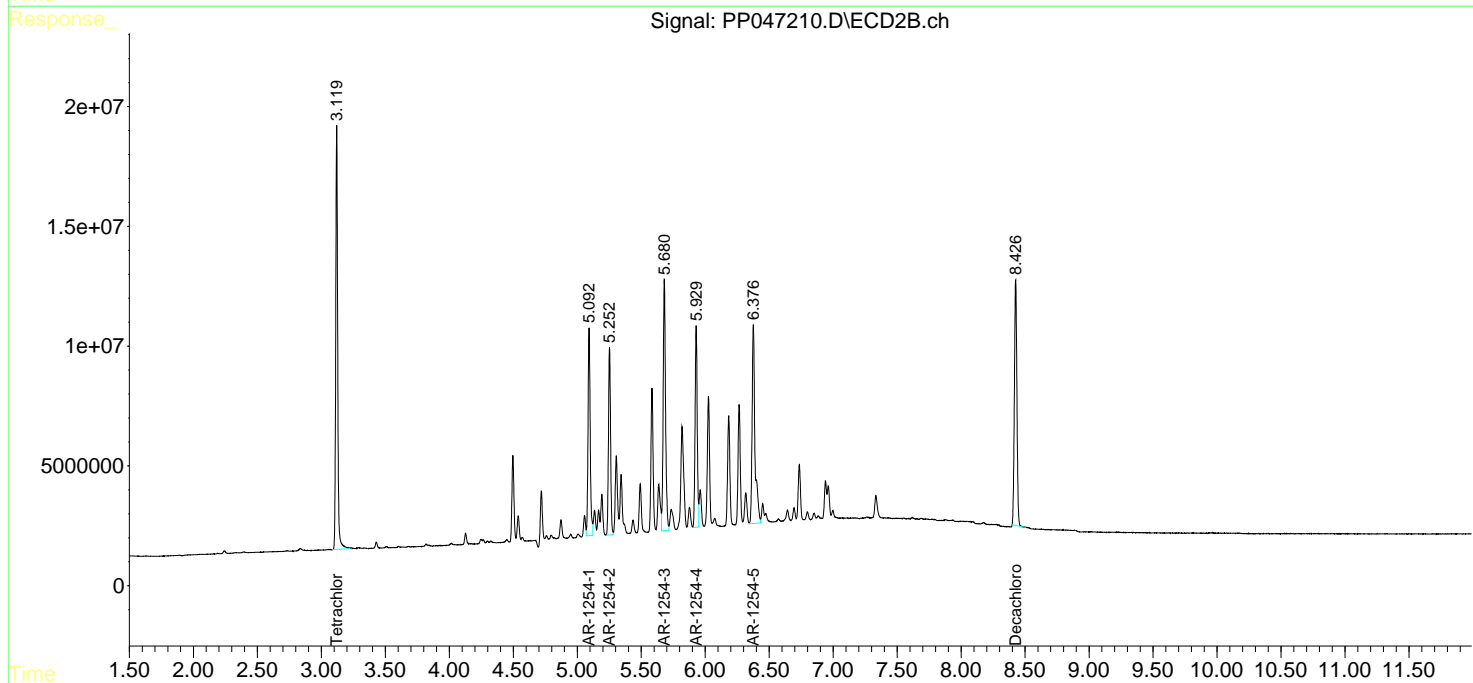
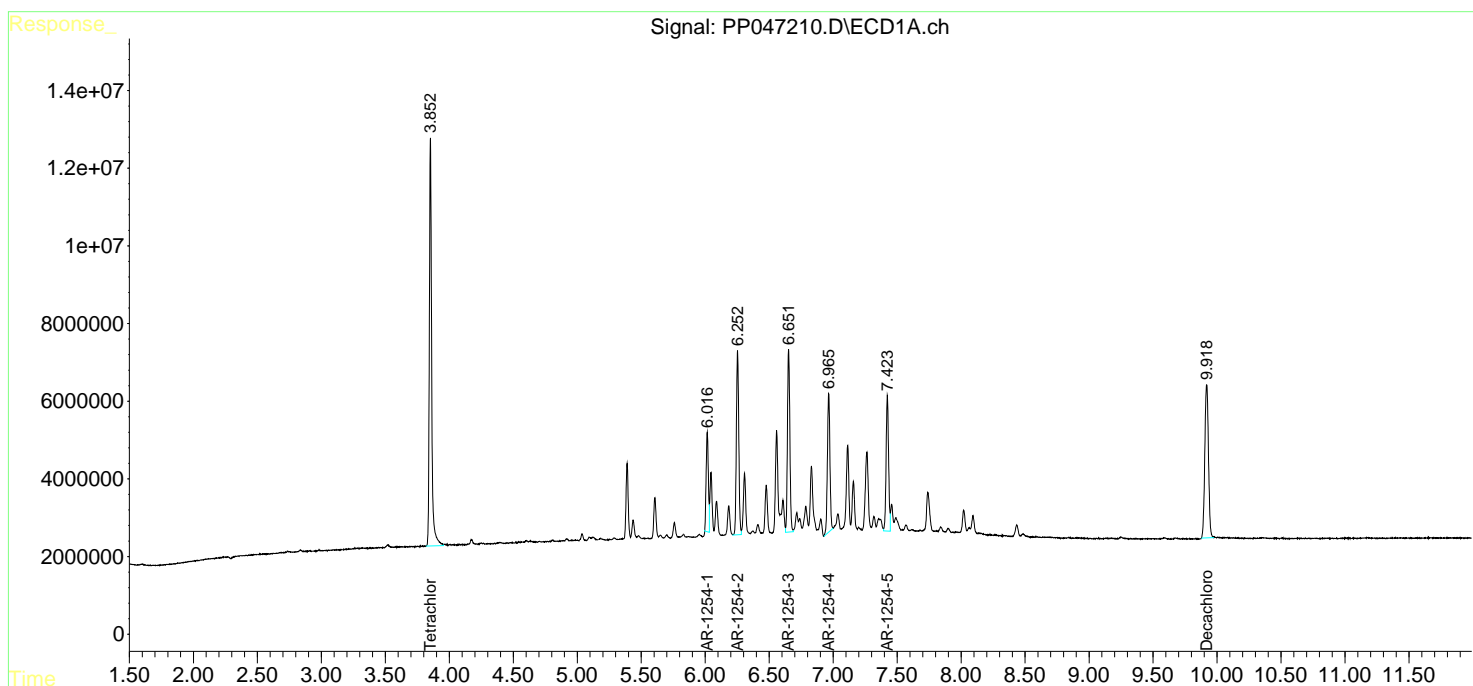
(f)=RT Delta > 1/2 Window (#)=Amounts differ by > 25% (m)=manual int.

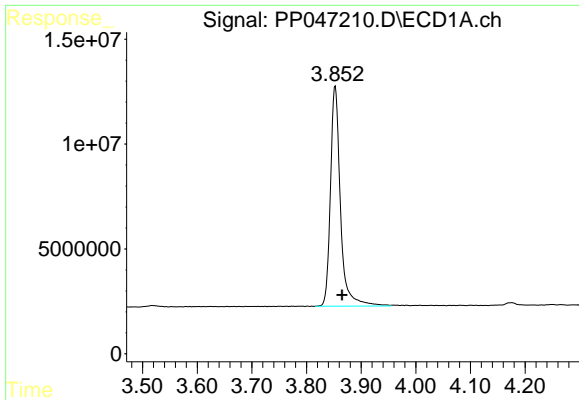
Data Path : Z:\pestpcbsrv\HPCHEM1\ECD_P\Data\PP050722\
 Data File : PP047210.D
 Signal(s) : Signal #1: ECD1A.ch Signal #2: ECD2B.ch
 Acq On : 08 May 2022 12:24
 Operator : YP\AJ
 Sample : AR1254CCC500
 Misc :
 ALS Vial : 6 Sample Multiplier: 1

Instrument :
 ECD_P
 ClientSampleId :
 AR1254CCC500

Integration File signal 1: autoint1.e
 Integration File signal 2: autoint2.e
 Quant Time: May 09 02:49:38 2022
 Quant Method : Z:\pestpcbsrv\HPCHEM1\ECD_P\methods\PP042222.M
 Quant Title : GC EXTRACTABLES
 QLast Update : Fri May 06 10:17:17 2022
 Response via : Initial Calibration
 Integrator: ChemStation

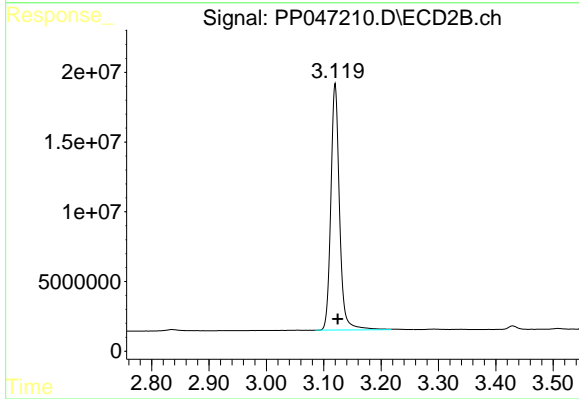
Volume Inj. : 2 µl
 Signal #1 Phase : ZB-MR1 Signal #2 Phase: ZB-MR2
 Signal #1 Info : 30Mx0.32mmx 0.50µ Signal #2 Info : 30M x 0.32mm x 0.25µm



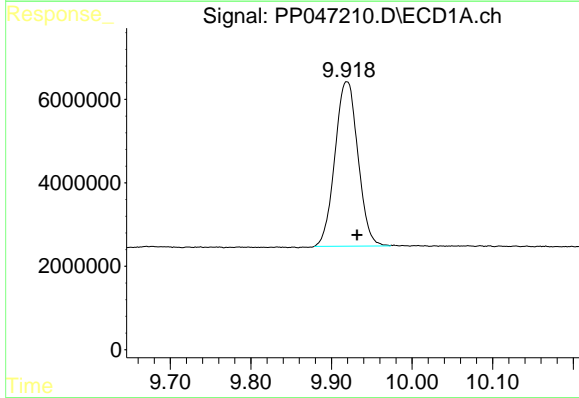


#1 Tetrachloro-m-xylene
 R.T.: 3.853 min
 Delta R.T.: -0.012 min
 Response: 133166169
 Conc: 55.17 ng/ml

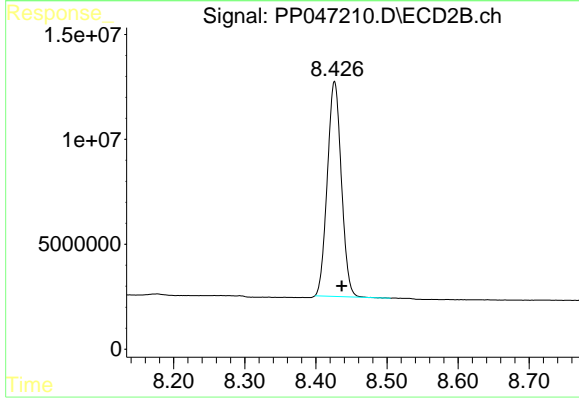
Instrument :
 ECD_P
 ClientSampleId :
 AR1254CCC500



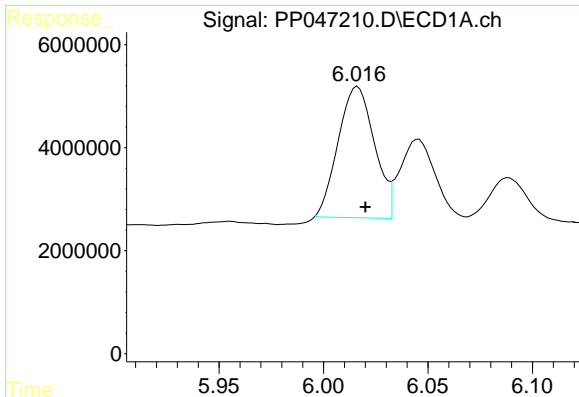
#1 Tetrachloro-m-xylene
 R.T.: 3.120 min
 Delta R.T.: -0.005 min
 Response: 188355988
 Conc: 57.42 ng/ml



#2 Decachlorobiphenyl
 R.T.: 9.919 min
 Delta R.T.: -0.013 min
 Response: 78161350
 Conc: 53.12 ng/ml



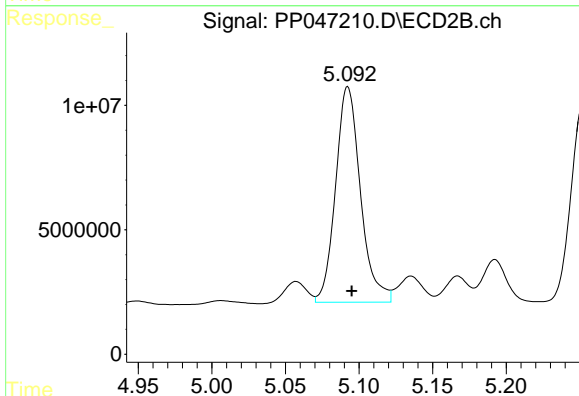
#2 Decachlorobiphenyl
 R.T.: 8.426 min
 Delta R.T.: -0.010 min
 Response: 140342692
 Conc: 58.84 ng/ml



#26 AR-1254-1

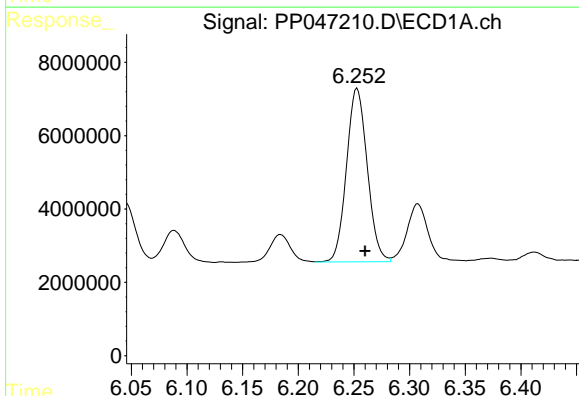
R.T.: 6.016 min
 Delta R.T.: -0.004 min
 Response: 30761069
 Conc: 529.58 ng/ml

Instrument :
 ECD_P
 ClientSampleId :
 AR1254CCC500



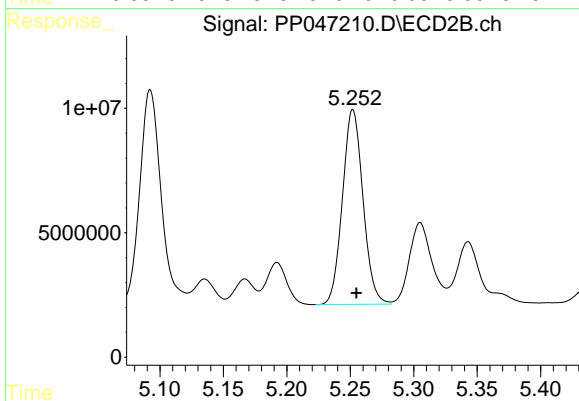
#26 AR-1254-1

R.T.: 5.092 min
 Delta R.T.: -0.003 min
 Response: 101993554
 Conc: 528.56 ng/ml



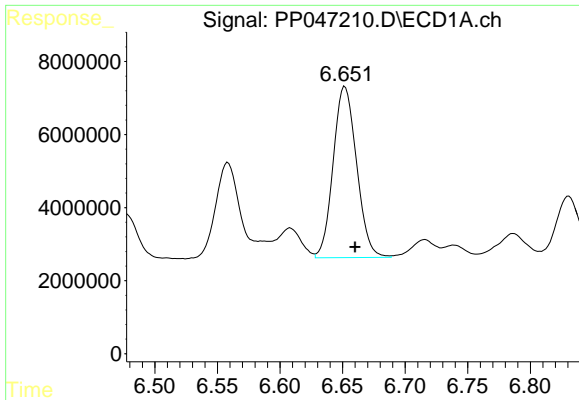
#27 AR-1254-2

R.T.: 6.253 min
 Delta R.T.: -0.007 min
 Response: 61394392
 Conc: 498.15 ng/ml



#27 AR-1254-2

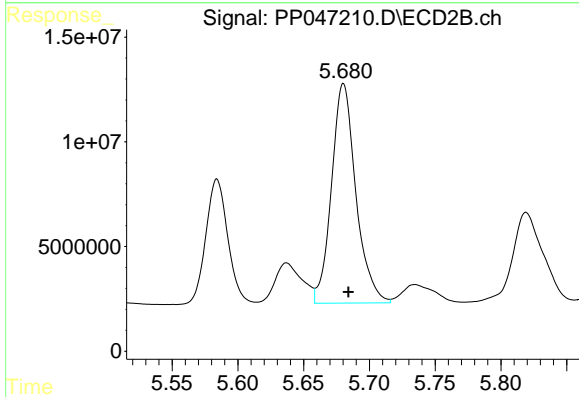
R.T.: 5.252 min
 Delta R.T.: -0.003 min
 Response: 88244305
 Conc: 529.92 ng/ml



#28 AR-1254-3

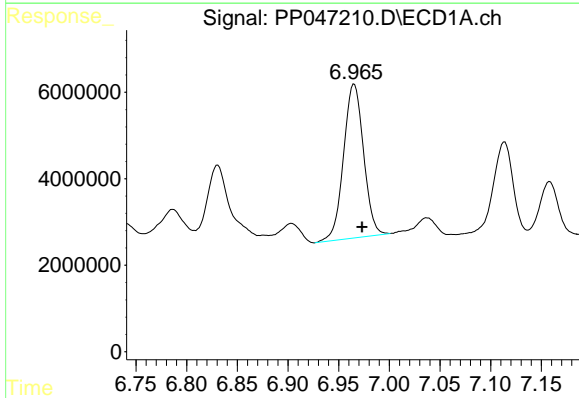
R.T.: 6.652 min
 Delta R.T.: -0.008 min
 Response: 61067577
 Conc: 461.52 ng/ml

Instrument :
 ECD_P
 ClientSampleId :
 AR1254CCC500



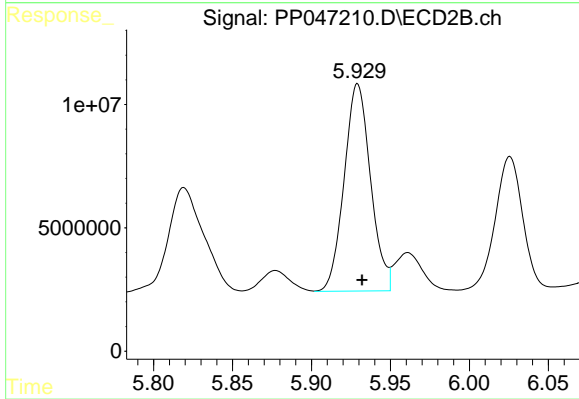
#28 AR-1254-3

R.T.: 5.680 min
 Delta R.T.: -0.004 min
 Response: 135328074
 Conc: 542.73 ng/ml



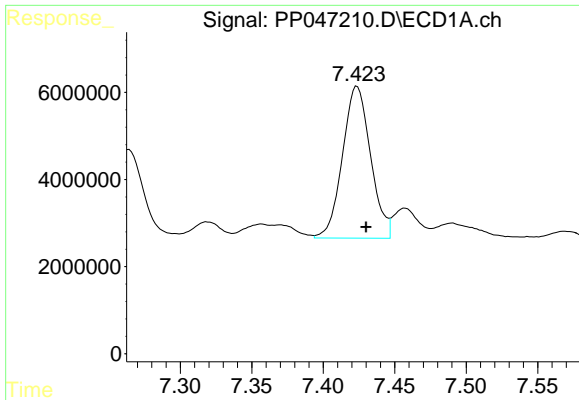
#29 AR-1254-4

R.T.: 6.965 min
 Delta R.T.: -0.008 min
 Response: 48864566
 Conc: 491.64 ng/ml



#29 AR-1254-4

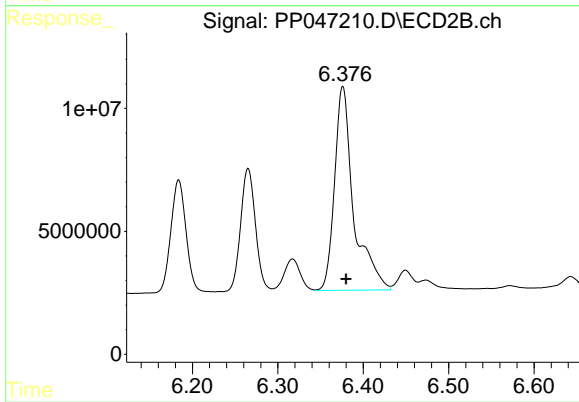
R.T.: 5.929 min
 Delta R.T.: -0.003 min
 Response: 97766363
 Conc: 569.82 ng/ml



#30 AR-1254-5

R.T.: 7.424 min
Delta R.T.: -0.006 min
Response: 47592203
Conc: 541.11 ng/ml

Instrument :
ECD_P
ClientSampleId :
AR1254CCC500



#30 AR-1254-5

R.T.: 6.376 min
Delta R.T.: -0.004 min
Response: 129134549
Conc: 591.81 ng/ml