

Data Path : Z:\pestpcbsrv\HPCHEM1\ECD_P\Data\PP050722\
 Data File : PP047230.D
 Signal(s) : Signal #1: ECD1A.ch Signal #2: ECD2B.ch
 Acq On : 08 May 2022 19:30
 Operator : YP\AJ
 Sample : N2723-05
 Misc :
 ALS Vial : 80 Sample Multiplier: 1

Instrument :
 ECD_P
ClientSampleId :
 MMC-PIT3

Manual Integrations
APPROVED

Reviewed By :Yogesh Patel 05/09/2022
 Supervised By :mohammad ahmed 05/09/2022

Integration File signal 1: autoint1.e
 Integration File signal 2: autoint2.e
 Quant Time: May 09 02:57:39 2022
 Quant Method : Z:\pestpcbsrv\HPCHEM1\ECD_P\methods\PP042222.M
 Quant Title : GC EXTRACTABLES
 QLast Update : Fri May 06 10:17:17 2022
 Response via : Initial Calibration
 Integrator: ChemStation

Volume Inj. : 2 µl
 Signal #1 Phase : ZB-MR1 Signal #2 Phase: ZB-MR2
 Signal #1 Info : 30Mx0.32mmx 0.50µ Signal #2 Info : 30M x 0.32mm x 0.25µm

Compound	RT#1	RT#2	Resp#1	Resp#2	ng/ml	ng/ml

System Monitoring Compounds						
1) SA Tetrachlo...	3.852	3.118	53586298	71766633	22.199	21.878m
2) SA Decachlor...	9.918	8.424	25117854	44476621	17.069	18.646

Target Compounds

(f)=RT Delta > 1/2 Window (#)=Amounts differ by > 25% (m)=manual int.

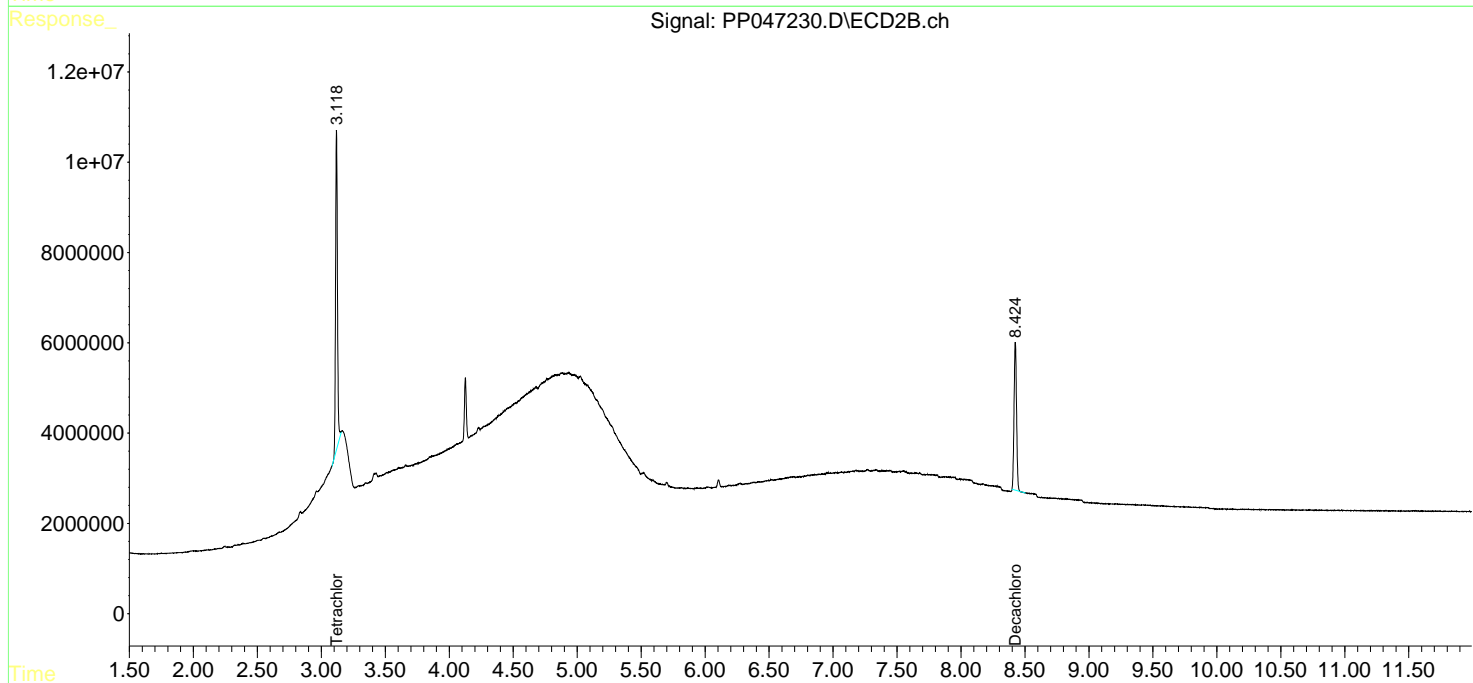
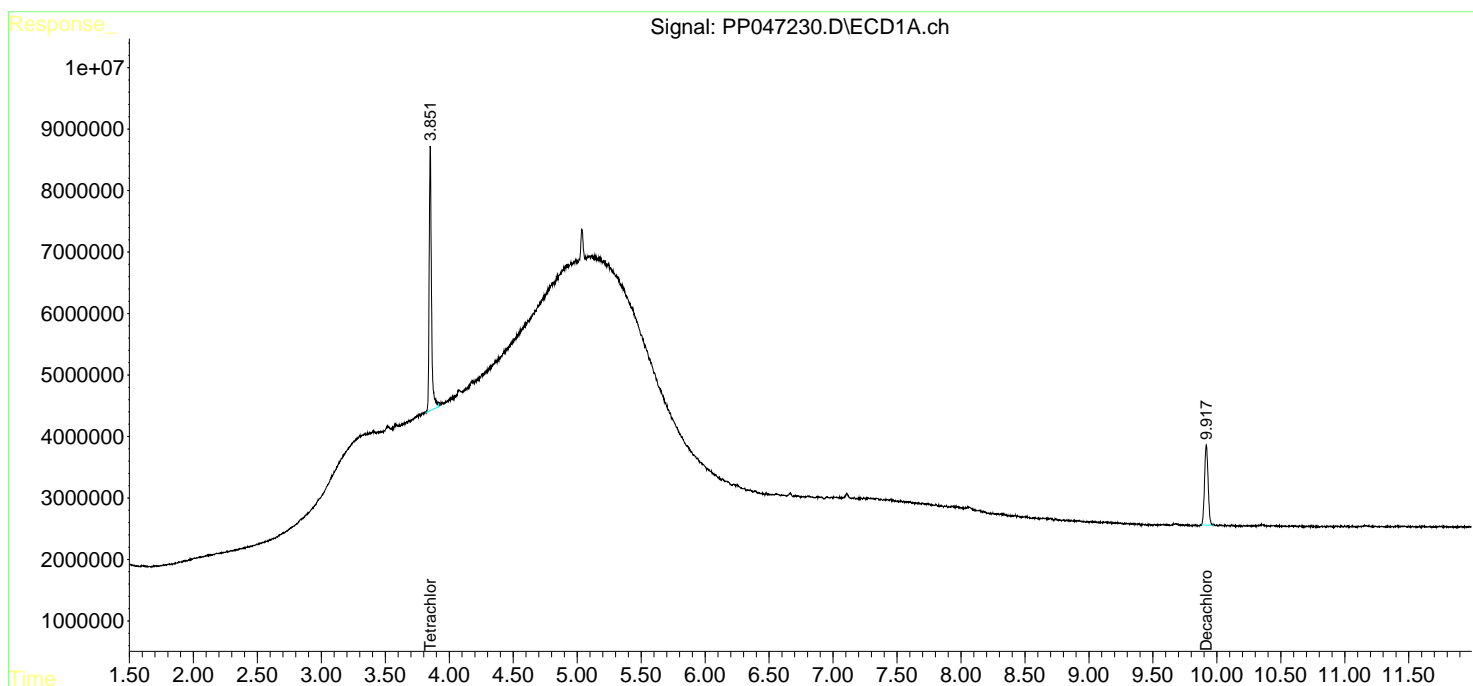
Data Path : Z:\pestpcbsrv\HPCHEM1\ECD_P\Data\PP050722\
 Data File : PP047230.D
 Signal(s) : Signal #1: ECD1A.ch Signal #2: ECD2B.ch
 Acq On : 08 May 2022 19:30
 Operator : YP\AJ
 Sample : N2723-05
 Misc :
 ALS Vial : 80 Sample Multiplier: 1

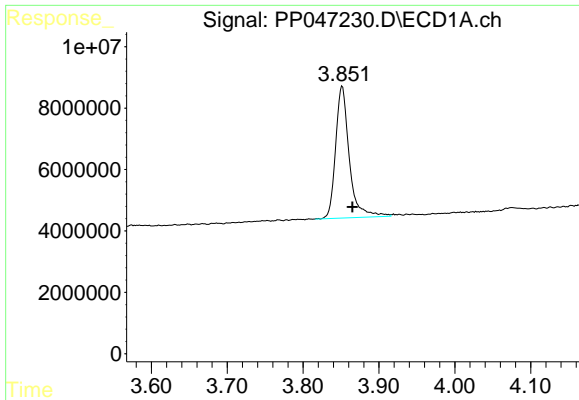
Instrument :
 ECD_P
ClientSampleId :
 MMC-PIT3

Manual Integrations
APPROVED
 Reviewed By :Yogesh Patel 05/09/2022
 Supervised By :mohammad ahmed 05/09/2022

Integration File signal 1: autoint1.e
 Integration File signal 2: autoint2.e
 Quant Time: May 09 02:57:39 2022
 Quant Method : Z:\pestpcbsrv\HPCHEM1\ECD_P\methods\PP042222.M
 Quant Title : GC EXTRACTABLES
 QLast Update : Fri May 06 10:17:17 2022
 Response via : Initial Calibration
 Integrator: ChemStation

Volume Inj. : 2 µl
 Signal #1 Phase : ZB-MR1 Signal #2 Phase: ZB-MR2
 Signal #1 Info : 30Mx0.32mmx 0.50µ Signal #2 Info : 30M x 0.32mm x 0.25µm





#1 Tetrachloro-m-xylene

R.T.: 3.852 min
 Delta R.T.: -0.013 min
 Response: 53586298
 Conc: 22.20 ng/ml

Instrument :

ECD_P

ClientSampleId :

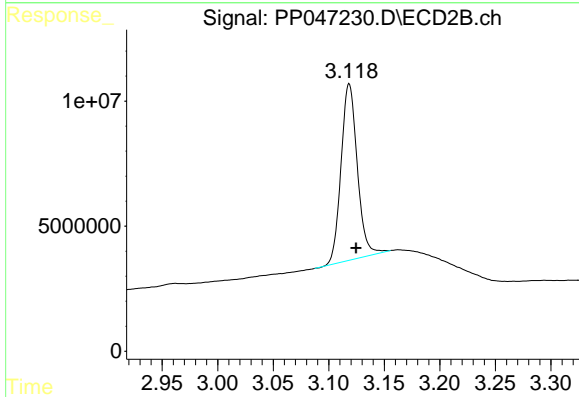
MMC-PIT3

Manual Integrations

APPROVED

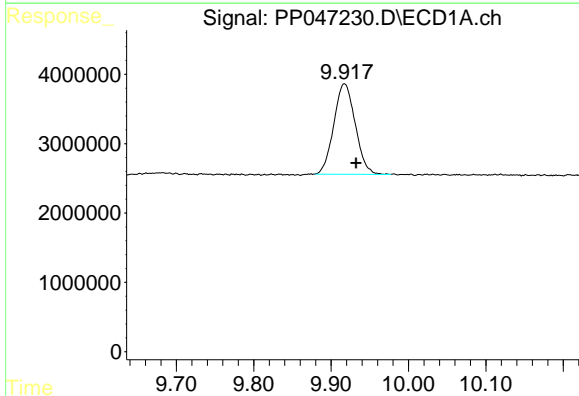
Reviewed By :Yogesh Patel 05/09/2022

Supervised By :mohammad ahmed 05/09/2022



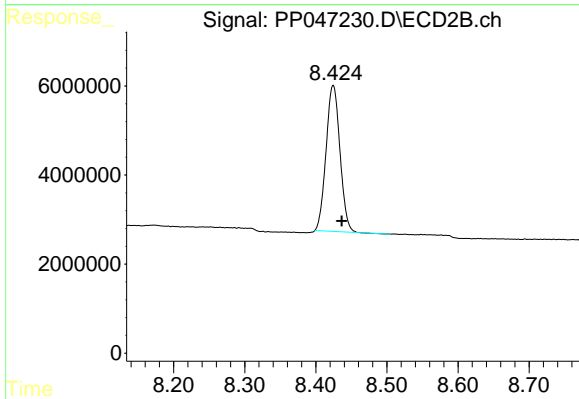
#1 Tetrachloro-m-xylene

R.T.: 3.118 min
 Delta R.T.: -0.007 min
 Response: 71766633
 Conc: 21.88 ng/ml m



#2 Decachlorobiphenyl

R.T.: 9.918 min
 Delta R.T.: -0.014 min
 Response: 25117854
 Conc: 17.07 ng/ml



#2 Decachlorobiphenyl

R.T.: 8.424 min
 Delta R.T.: -0.012 min
 Response: 44476621
 Conc: 18.65 ng/ml