

Data Path : Z:\pestpcbsrv\HPCHEM1\ECD\_P\Data\PP050722\  
 Data File : PP047236.D  
 Signal(s) : Signal #1: ECD1A.ch Signal #2: ECD2B.ch  
 Acq On : 08 May 2022 21:01  
 Operator : YP\AJ  
 Sample : N2694-01 10X  
 Misc :  
 ALS Vial : 86 Sample Multiplier: 1

**Instrument :**  
 ECD\_P  
**ClientSampleId :**  
 1952-1943-COMP1

**Manual Integrations**  
**APPROVED**  
 Reviewed By :Yogesh Patel 05/09/2022  
 Supervised By :mohammad ahmed 05/09/2022

Integration File signal 1: autoint1.e  
 Integration File signal 2: autoint2.e  
 Quant Time: May 09 03:00:29 2022  
 Quant Method : Z:\pestpcbsrv\HPCHEM1\ECD\_P\methods\PP042222.M  
 Quant Title : GC EXTRACTABLES  
 QLast Update : Fri May 06 10:17:17 2022  
 Response via : Initial Calibration  
 Integrator: ChemStation

Volume Inj. : 2 µl  
 Signal #1 Phase : ZB-MR1 Signal #2 Phase: ZB-MR2  
 Signal #1 Info : 30Mx0.32mmx 0.50µ Signal #2 Info : 30M x 0.32mm x 0.25µm

Compound	RT#1	RT#2	Resp#1	Resp#2	ng/ml	ng/ml
-----						
System Monitoring Compounds						
1) SA Tetrachlo...	3.851	3.121	4221942	5775207	1.749m	1.761
2) SA Decachlor...	9.915f	8.423	4122989	6509744	2.802m	2.729m

Target Compounds  
 -----

(f)=RT Delta > 1/2 Window (#)=Amounts differ by > 25% (m)=manual int.

Data Path : Z:\pestpcbsrv\HPCHEM1\ECD\_P\Data\PP050722\  
 Data File : PP047236.D  
 Signal(s) : Signal #1: ECD1A.ch Signal #2: ECD2B.ch  
 Acq On : 08 May 2022 21:01  
 Operator : YP\AJ  
 Sample : N2694-01 10X  
 Misc :  
 ALS Vial : 86 Sample Multiplier: 1

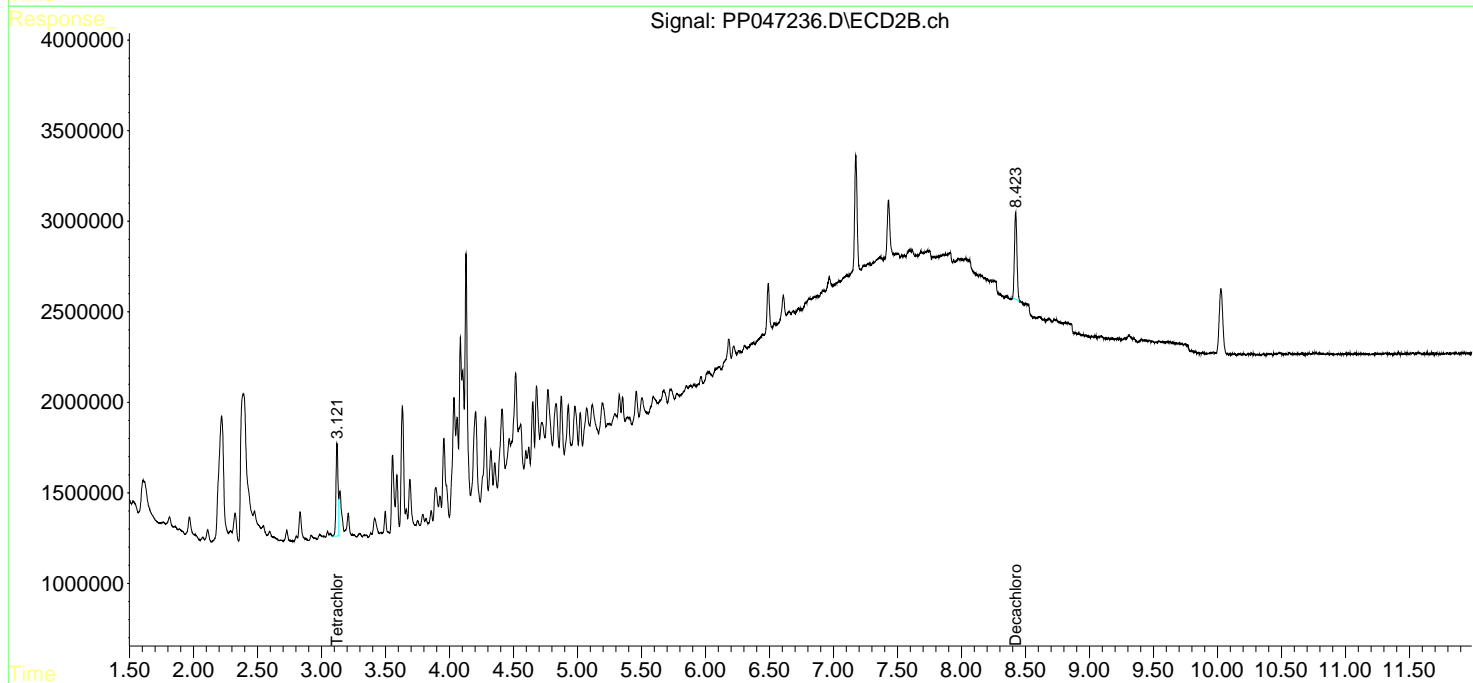
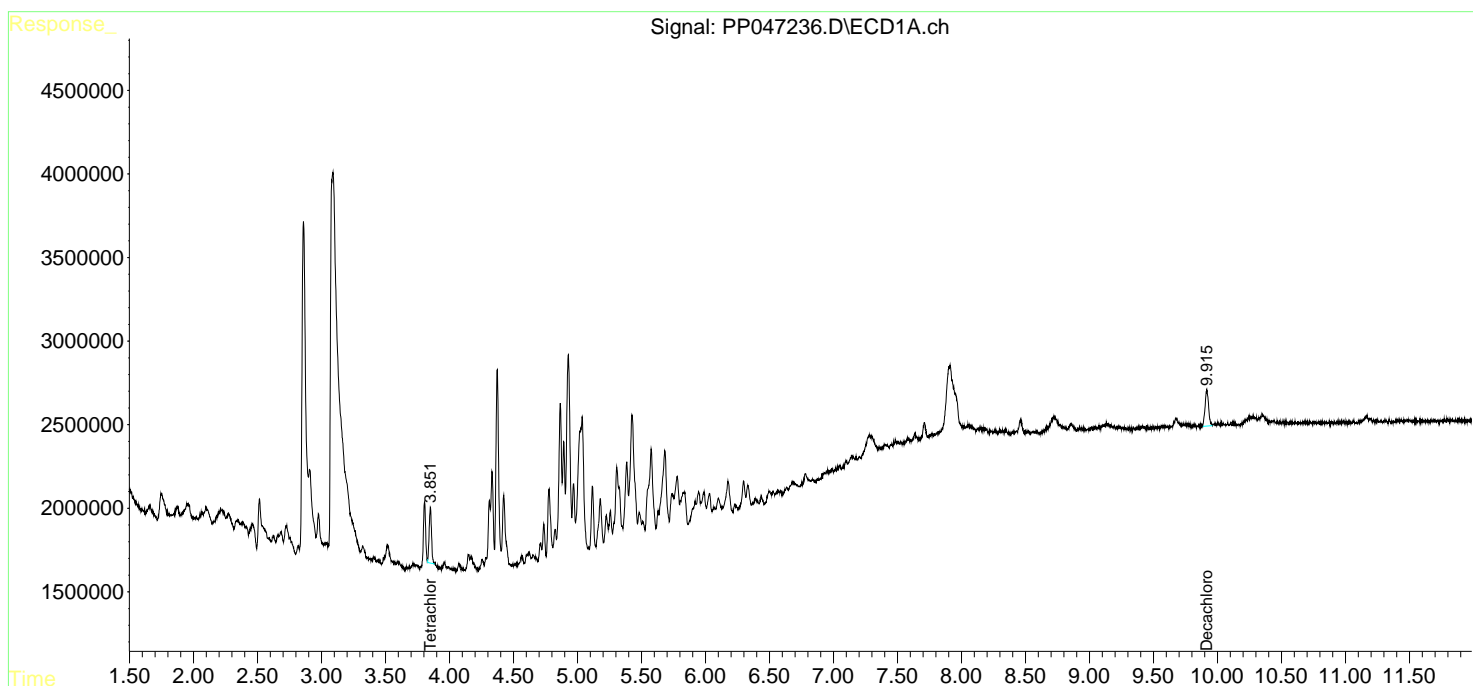
Instrument :  
 ECD\_P  
 ClientSampleId :  
 1952-1943-COMP1

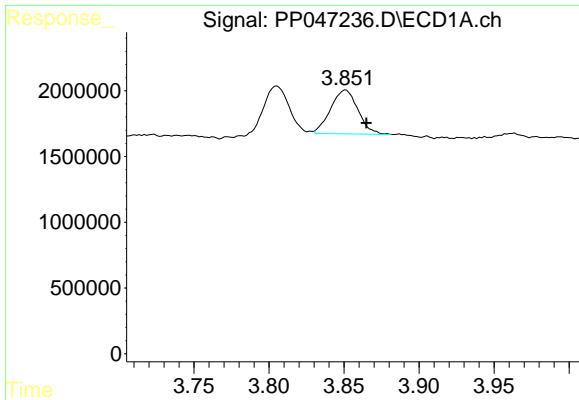
Manual Integrations  
 APPROVED

Reviewed By :Yogesh Patel 05/09/2022  
 Supervised By :mohammad ahmed 05/09/2022

Integration File signal 1: autoint1.e  
 Integration File signal 2: autoint2.e  
 Quant Time: May 09 03:00:29 2022  
 Quant Method : Z:\pestpcbsrv\HPCHEM1\ECD\_P\methods\PP042222.M  
 Quant Title : GC EXTRACTABLES  
 QLast Update : Fri May 06 10:17:17 2022  
 Response via : Initial Calibration  
 Integrator: ChemStation

Volume Inj. : 2 µl  
 Signal #1 Phase : ZB-MR1 Signal #2 Phase: ZB-MR2  
 Signal #1 Info : 30Mx0.32mmx 0.50µ Signal #2 Info : 30M x 0.32mm x 0.25µm

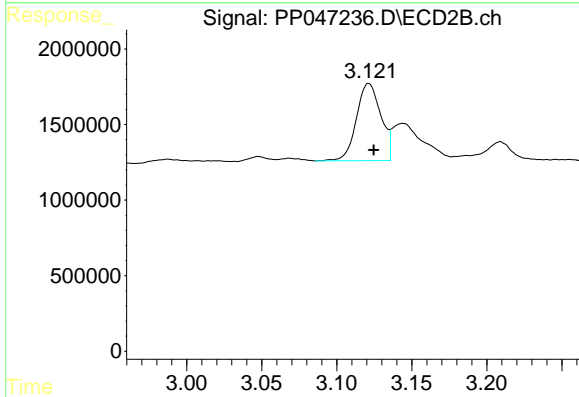




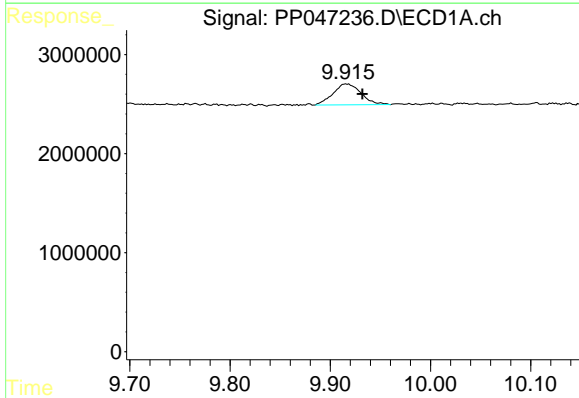
#1 Tetrachloro-m-xylene  
 R.T.: 3.851 min  
 Delta R.T.: -0.014 min  
 Response: 4221942  
 Conc: 1.75 ng/ml

Instrument : ECD\_P  
 ClientSampleId : 1952-1943-COMP1

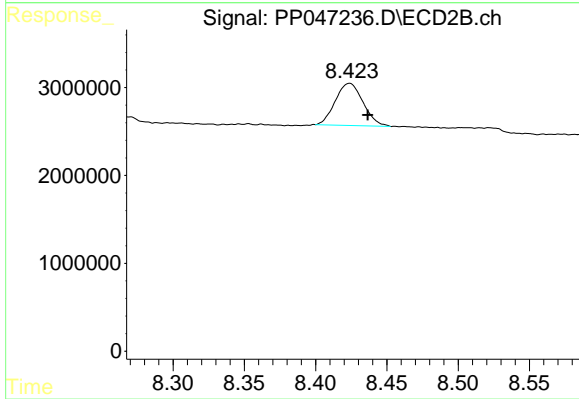
**Manual Integrations**  
**APPROVED**  
 Reviewed By :Yogesh Patel 05/09/2022  
 Supervised By :mohammad ahmed 05/09/2022



#1 Tetrachloro-m-xylene  
 R.T.: 3.121 min  
 Delta R.T.: -0.003 min  
 Response: 5775207  
 Conc: 1.76 ng/ml



#2 Decachlorobiphenyl  
 R.T.: 9.915 min  
 Delta R.T.: -0.017 min  
 Response: 4122989  
 Conc: 2.80 ng/ml m



#2 Decachlorobiphenyl  
 R.T.: 8.423 min  
 Delta R.T.: -0.013 min  
 Response: 6509744  
 Conc: 2.73 ng/ml m