

Data Path : Z:\pestpcbsrv\HPCHEM1\ECD_P\Data\PP050722\
 Data File : PP047251.D
 Signal(s) : Signal #1: ECD1A.ch Signal #2: ECD2B.ch
 Acq On : 09 May 2022 04:16
 Operator : YP\AJ
 Sample : N2619-08
 Misc :
 ALS Vial : 12 Sample Multiplier: 1

Instrument :
 ECD_P
ClientSampleId :
 SB04-14-15-FT

Integration File signal 1: autoint1.e
 Integration File signal 2: autoint2.e
 Quant Time: May 09 08:52:20 2022
 Quant Method : Z:\pestpcbsrv\HPCHEM1\ECD_P\methods\PP042222.M
 Quant Title : GC EXTRACTABLES
 QLast Update : Fri May 06 10:17:17 2022
 Response via : Initial Calibration
 Integrator: ChemStation

Volume Inj. : 2 µl
 Signal #1 Phase : ZB-MR1 Signal #2 Phase: ZB-MR2
 Signal #1 Info : 30Mx0.32mmx 0.50µ Signal #2 Info : 30M x 0.32mm x 0.25µm

Compound	RT#1	RT#2	Resp#1	Resp#2	ng/ml	ng/ml

System Monitoring Compounds						
1) SA Tetrachlo...	3.852	3.119	51984213	88895753	21.535	27.099 #
2) SA Decachlor...	9.918	8.426	22717611	40787543	15.438	17.099

Target Compounds

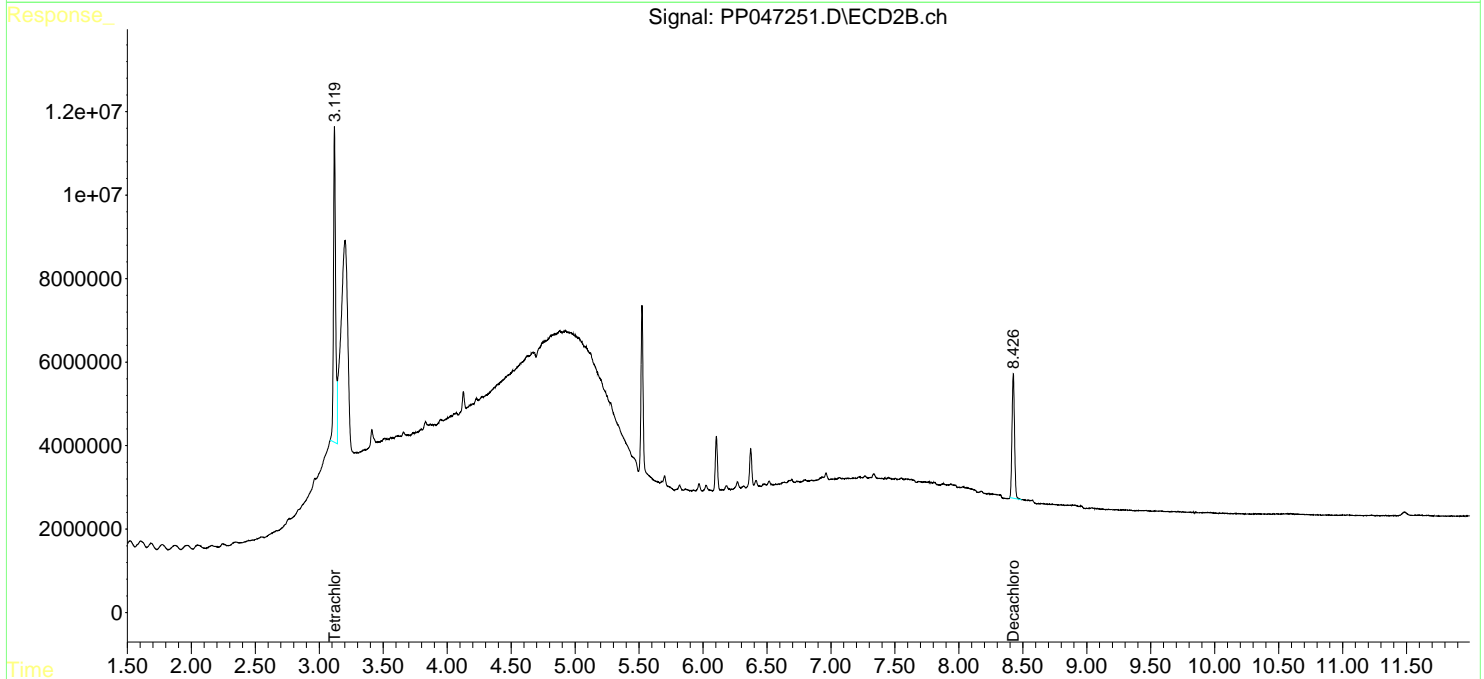
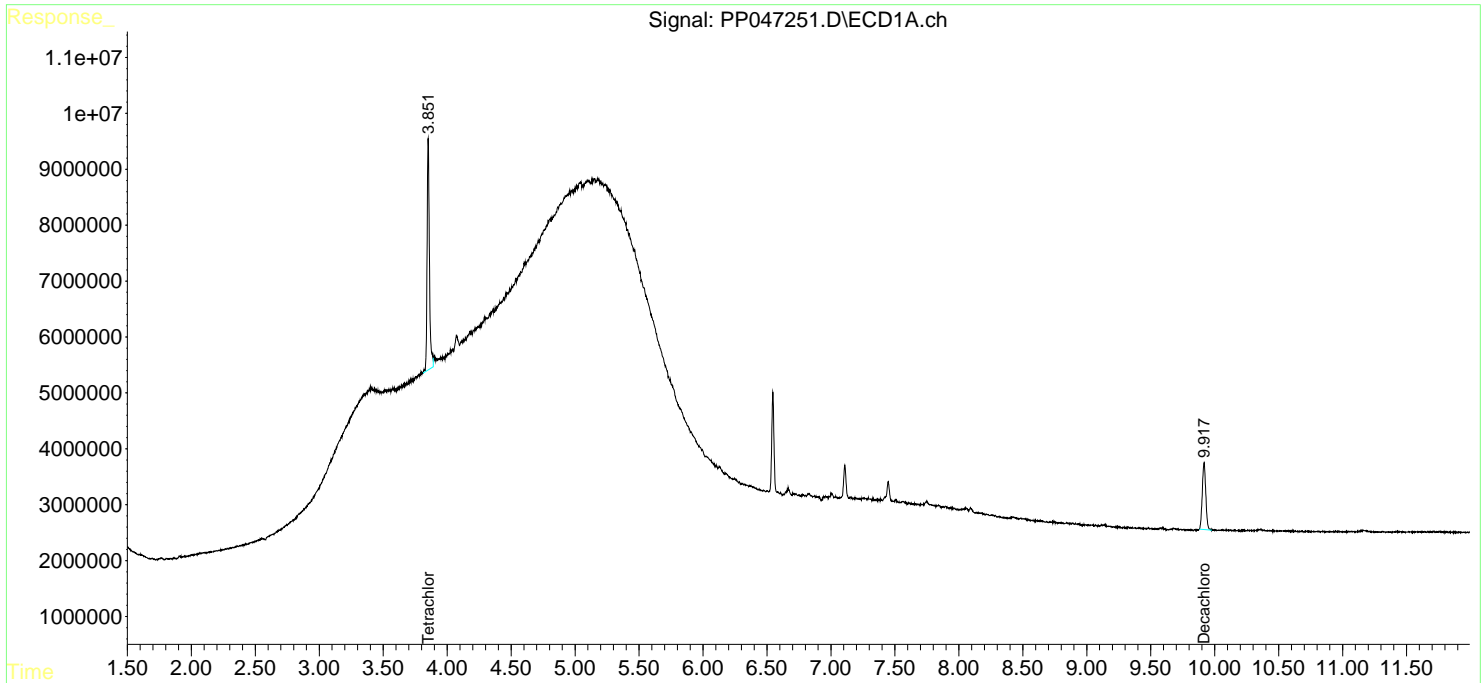
(f)=RT Delta > 1/2 Window (#)=Amounts differ by > 25% (m)=manual int.

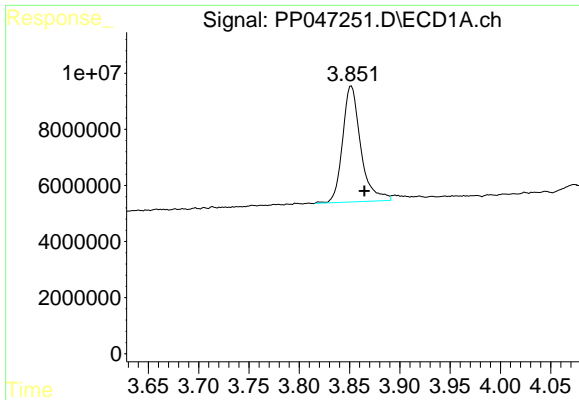
Data Path : Z:\pestpcbsrv\HPCHEM1\ECD_P\Data\PP050722\
 Data File : PP047251.D
 Signal(s) : Signal #1: ECD1A.ch Signal #2: ECD2B.ch
 Acq On : 09 May 2022 04:16
 Operator : YP\AJ
 Sample : N2619-08
 Misc :
 ALS Vial : 12 Sample Multiplier: 1

Instrument :
 ECD_P
ClientSampleId :
 SB04-14-15-FT

Integration File signal 1: autoint1.e
 Integration File signal 2: autoint2.e
 Quant Time: May 09 08:52:20 2022
 Quant Method : Z:\pestpcbsrv\HPCHEM1\ECD_P\methods\PP042222.M
 Quant Title : GC EXTRACTABLES
 QLast Update : Fri May 06 10:17:17 2022
 Response via : Initial Calibration
 Integrator: ChemStation

Volume Inj. : 2 µl
 Signal #1 Phase : ZB-MR1 Signal #2 Phase: ZB-MR2
 Signal #1 Info : 30Mx0.32mmx 0.50µ Signal #2 Info : 30M x 0.32mm x 0.25µm

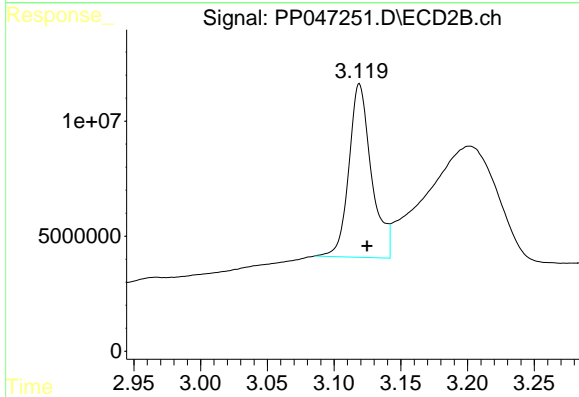




#1 Tetrachloro-m-xylene

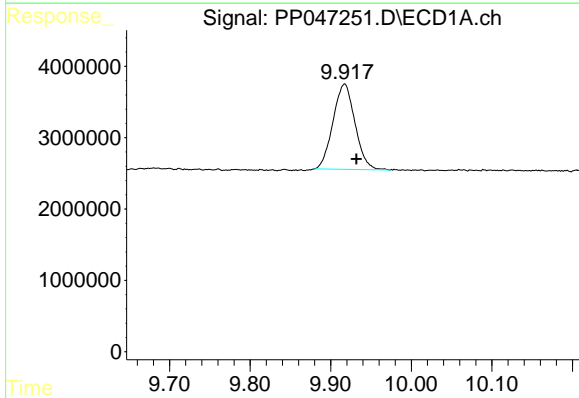
R.T.: 3.852 min
 Delta R.T.: -0.013 min
 Response: 51984213
 Conc: 21.54 ng/ml

Instrument :
 ECD_P
 ClientSampleId :
 SB04-14-15-FT



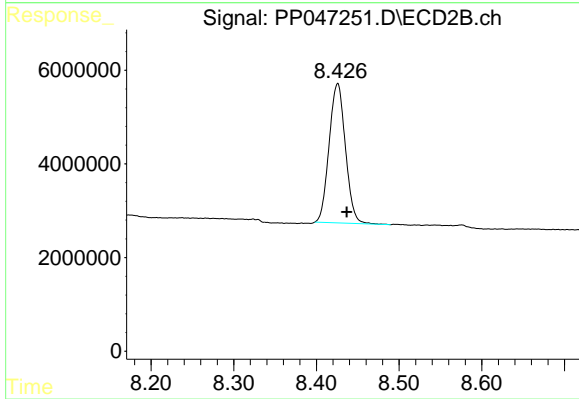
#1 Tetrachloro-m-xylene

R.T.: 3.119 min
 Delta R.T.: -0.006 min
 Response: 88895753
 Conc: 27.10 ng/ml



#2 Decachlorobiphenyl

R.T.: 9.918 min
 Delta R.T.: -0.014 min
 Response: 22717611
 Conc: 15.44 ng/ml



#2 Decachlorobiphenyl

R.T.: 8.426 min
 Delta R.T.: -0.011 min
 Response: 40787543
 Conc: 17.10 ng/ml