

Data Path : Z:\pestpcbsrv\HPCHEM1\ECD_P\Data\PP050722\
 Data File : PP047254.D
 Signal(s) : Signal #1: ECD1A.ch Signal #2: ECD2B.ch
 Acq On : 09 May 2022 05:32
 Operator : YP\AJ
 Sample : AR1248CCC500
 Misc :
 ALS Vial : 5 Sample Multiplier: 1

Instrument :
 ECD_P
ClientSampleId :
 AR1248CCC500

Manual Integrations
APPROVED

Reviewed By :Yogesh Patel 05/09/2022
 Supervised By :mohammad ahmed 05/09/2022

Integration File signal 1: autoint1.e
 Integration File signal 2: autoint2.e
 Quant Time: May 09 08:58:20 2022
 Quant Method : Z:\pestpcbsrv\HPCHEM1\ECD_P\methods\PP042222.M
 Quant Title : GC EXTRACTABLES
 QLast Update : Fri May 06 10:17:17 2022
 Response via : Initial Calibration
 Integrator: ChemStation

Volume Inj. : 2 µl
 Signal #1 Phase : ZB-MR1 Signal #2 Phase: ZB-MR2
 Signal #1 Info : 30Mx0.32mmx 0.50µ Signal #2 Info : 30M x 0.32mm x 0.25µm

Compound	RT#1	RT#2	Resp#1	Resp#2	ng/ml	ng/ml

System Monitoring Compounds						
1) SA Tetrachlo...	3.853	3.118	146.1E6	202.8E6	60.543	61.836
2) SA Decachlor...	9.919	8.425	85386000	154.9E6	58.026	64.943
Target Compounds						
21) L5 AR-1248-1	5.096	4.246	25110804	40640148	600.808	591.423
22) L5 AR-1248-2	5.390f	4.496f	34339614	56397280	581.006	603.230
23) L5 AR-1248-3	5.607f	4.538	39851061	58622296	570.512	600.500
24) L5 AR-1248-4	6.045f	4.717f	39523415	70911592	515.424	602.387m
25) L5 AR-1248-5	6.086f	5.134f	38034019	65680871	489.003	538.983m

(f)=RT Delta > 1/2 Window (#)=Amounts differ by > 25% (m)=manual int.

Data Path : Z:\pestpcbsrv\HPCHEM1\ECD_P\Data\PP050722\
 Data File : PP047254.D
 Signal(s) : Signal #1: ECD1A.ch Signal #2: ECD2B.ch
 Acq On : 09 May 2022 05:32
 Operator : YP\AJ
 Sample : AR1248CCC500
 Misc :
 ALS Vial : 5 Sample Multiplier: 1

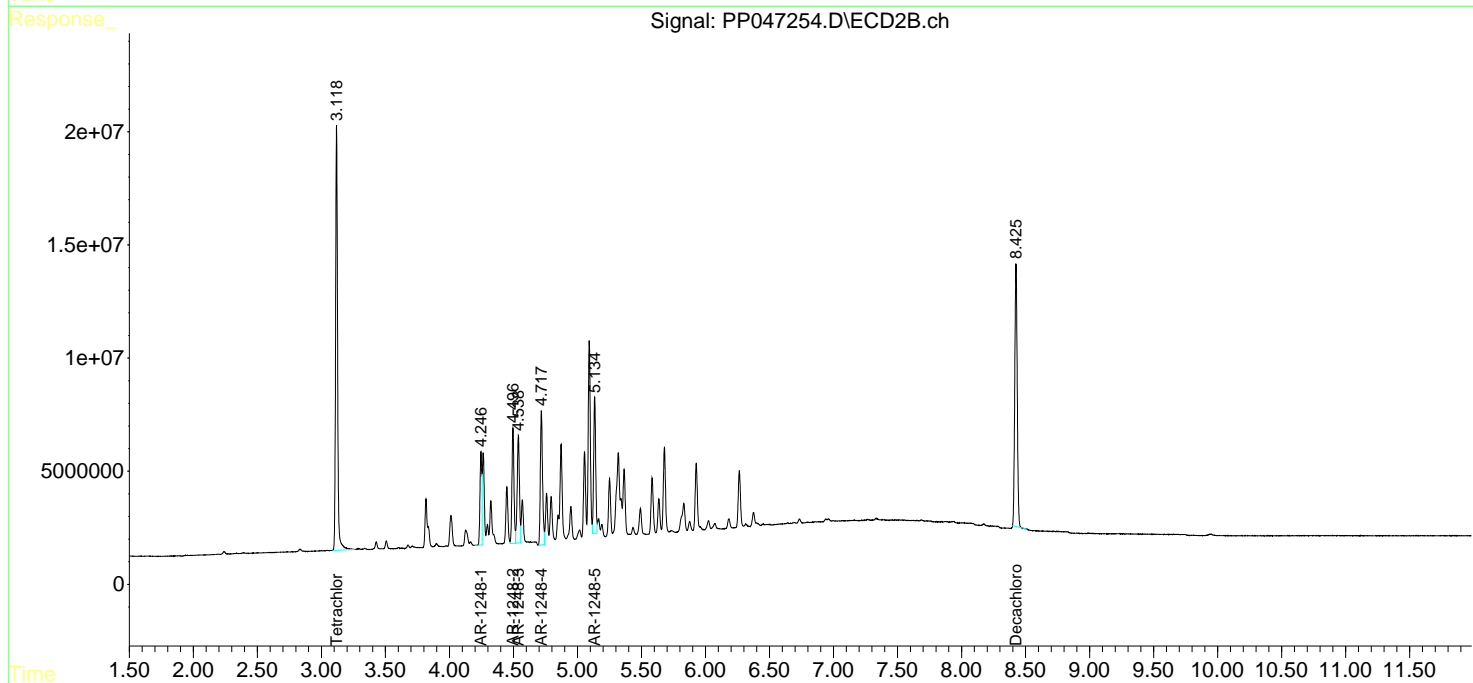
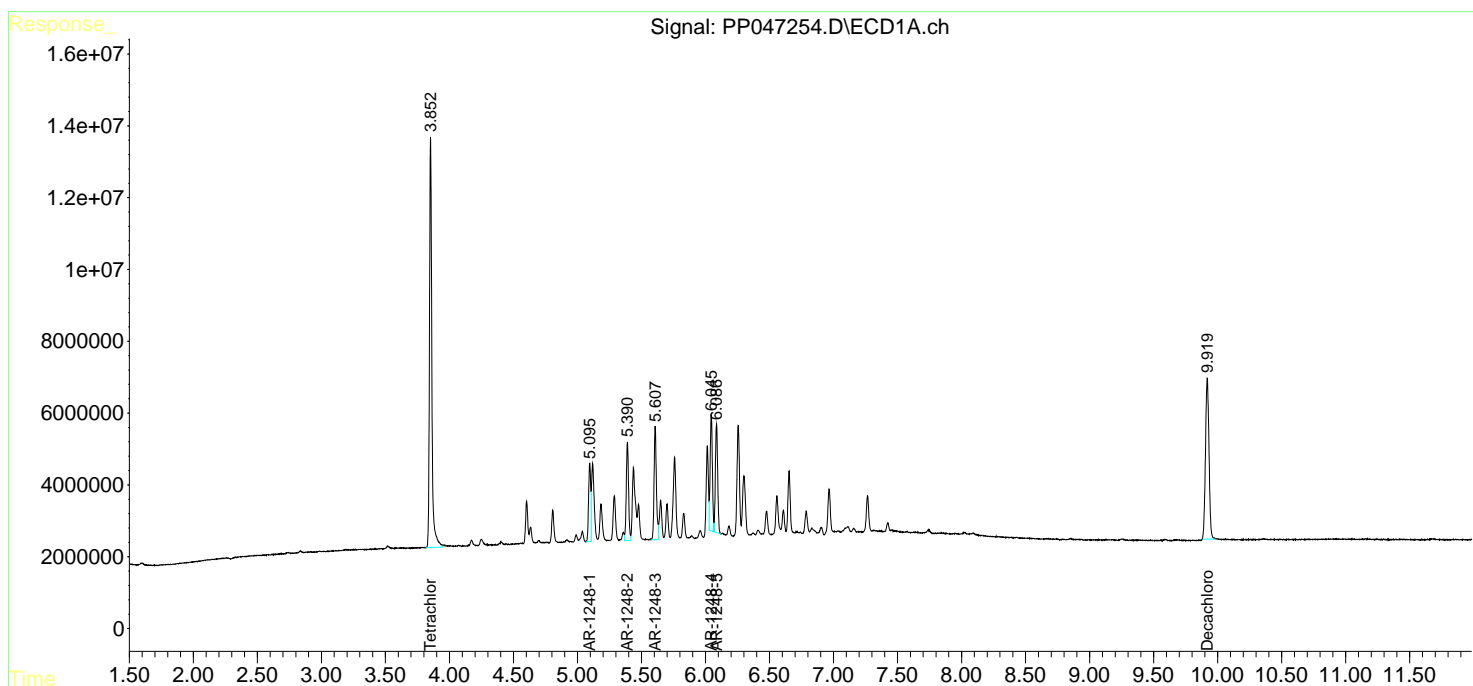
Instrument :
 ECD_P
 ClientSampleId :
 AR1248CCC500

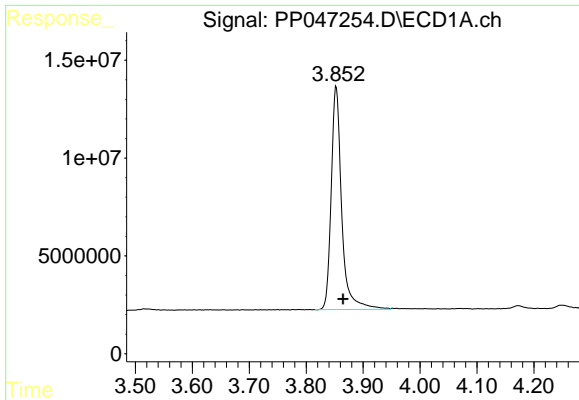
Manual Integrations
APPROVED

Reviewed By :Yogesh Patel 05/09/2022
 Supervised By :mohammad ahmed 05/09/2022

Integration File signal 1: autoint1.e
 Integration File signal 2: autoint2.e
 Quant Time: May 09 08:58:20 2022
 Quant Method : Z:\pestpcbsrv\HPCHEM1\ECD_P\methods\PP042222.M
 Quant Title : GC EXTRACTABLES
 QLast Update : Fri May 06 10:17:17 2022
 Response via : Initial Calibration
 Integrator: ChemStation

Volume Inj. : 2 µl
 Signal #1 Phase : ZB-MR1 Signal #2 Phase: ZB-MR2
 Signal #1 Info : 30Mx0.32mmx 0.50µ Signal #2 Info : 30M x 0.32mm x 0.25µm



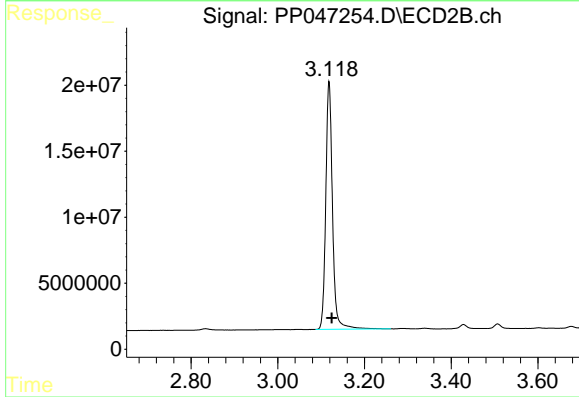


#1 Tetrachloro-m-xylene
 R.T.: 3.853 min
 Delta R.T.: -0.012 min
 Response: 146146134
 Conc: 60.54 ng/ml

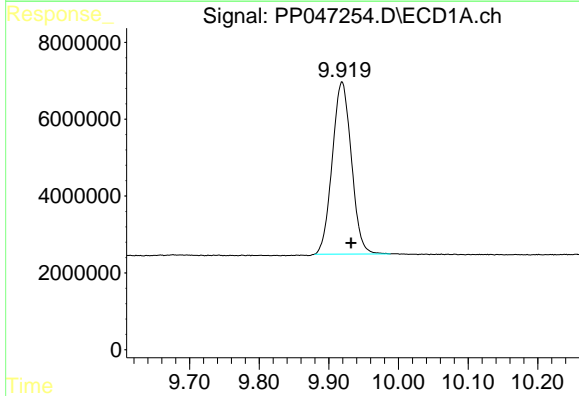
Instrument :
 ECD_P
 ClientSampleId :
 AR1248CCC500

Manual Integrations
 APPROVED

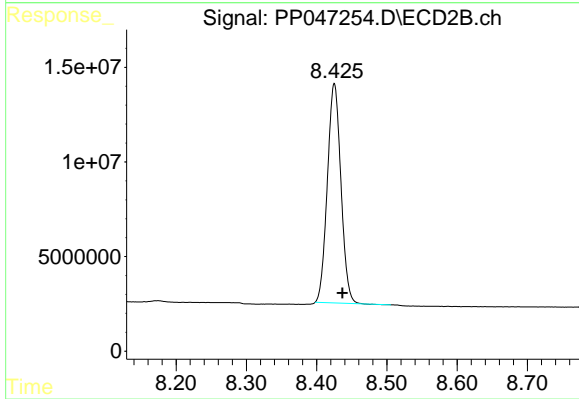
Reviewed By :Yogesh Patel 05/09/2022
 Supervised By :mohammad ahmed 05/09/2022



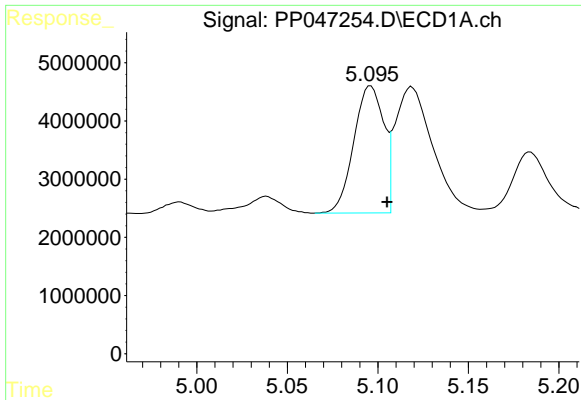
#1 Tetrachloro-m-xylene
 R.T.: 3.118 min
 Delta R.T.: -0.006 min
 Response: 202844767
 Conc: 61.84 ng/ml



#2 Decachlorobiphenyl
 R.T.: 9.919 min
 Delta R.T.: -0.013 min
 Response: 85386000
 Conc: 58.03 ng/ml



#2 Decachlorobiphenyl
 R.T.: 8.425 min
 Delta R.T.: -0.011 min
 Response: 154909094
 Conc: 64.94 ng/ml



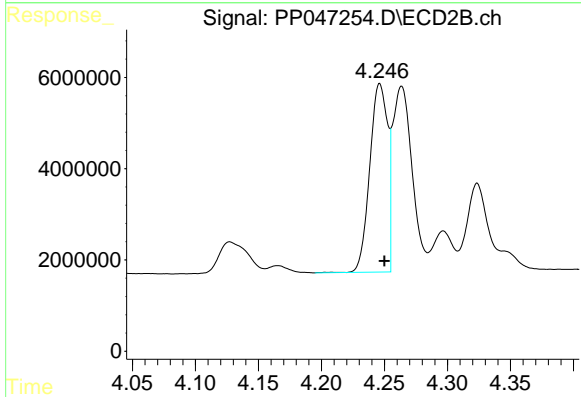
#21 AR-1248-1

R.T.: 5.096 min
 Delta R.T.: -0.009 min
 Response: 25110804
 Conc: 600.81 ng/ml

Instrument :
 ECD_P
 ClientSampleId :
 AR1248CCC500

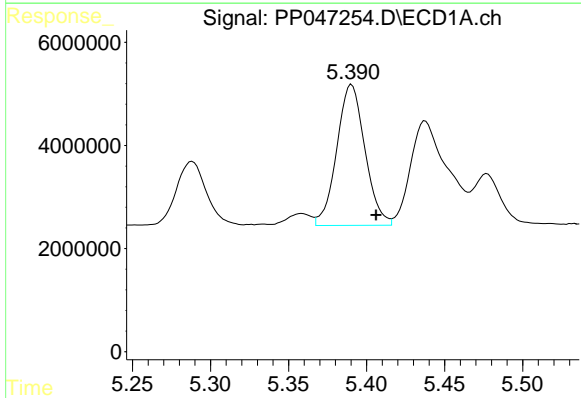
Manual Integrations
 APPROVED

Reviewed By :Yogesh Patel 05/09/2022
 Supervised By :mohammad ahmed 05/09/2022



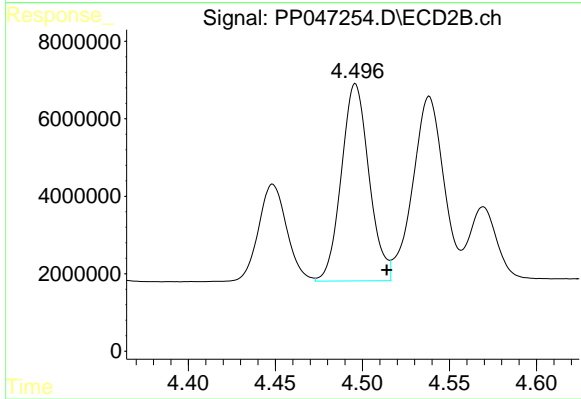
#21 AR-1248-1

R.T.: 4.246 min
 Delta R.T.: -0.004 min
 Response: 40640148
 Conc: 591.42 ng/ml



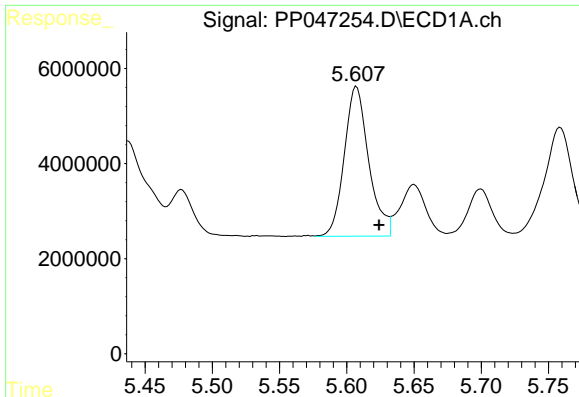
#22 AR-1248-2

R.T.: 5.390 min
 Delta R.T.: -0.016 min
 Response: 34339614
 Conc: 581.01 ng/ml



#22 AR-1248-2

R.T.: 4.496 min
 Delta R.T.: -0.018 min
 Response: 56397280
 Conc: 603.23 ng/ml



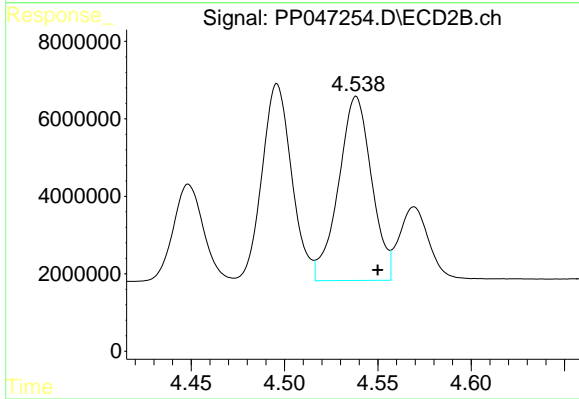
#23 AR-1248-3

R.T.: 5.607 min
 Delta R.T.: -0.017 min
 Response: 39851061
 Conc: 570.51 ng/ml

Instrument :
 ECD_P
 ClientSampleId :
 AR1248CCC500

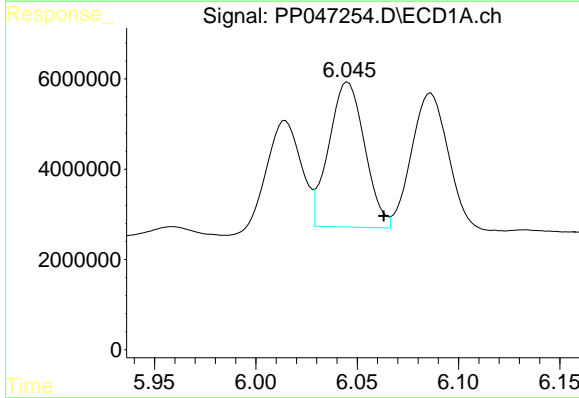
Manual Integrations
 APPROVED

Reviewed By :Yogesh Patel 05/09/2022
 Supervised By :mohammad ahmed 05/09/2022



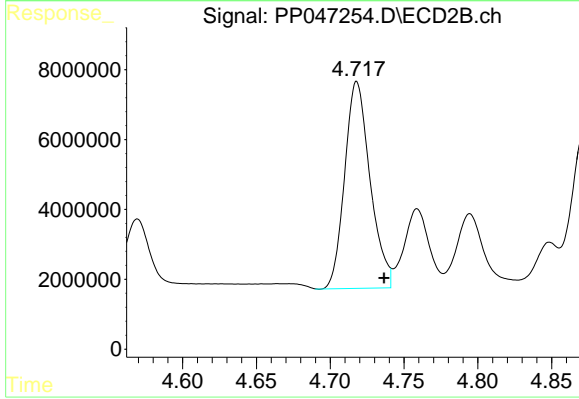
#23 AR-1248-3

R.T.: 4.538 min
 Delta R.T.: -0.012 min
 Response: 58622296
 Conc: 600.50 ng/ml



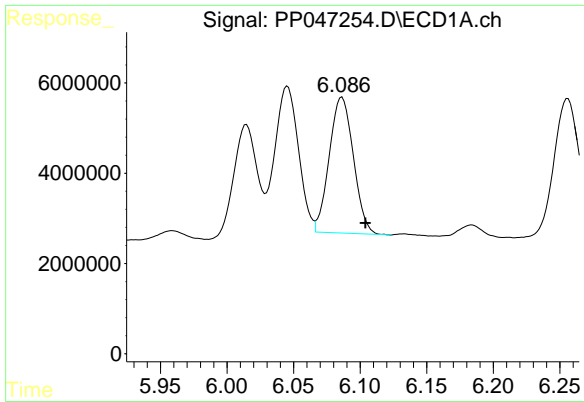
#24 AR-1248-4

R.T.: 6.045 min
 Delta R.T.: -0.018 min
 Response: 39523415
 Conc: 515.42 ng/ml



#24 AR-1248-4

R.T.: 4.717 min
 Delta R.T.: -0.019 min
 Response: 70911592
 Conc: 602.39 ng/ml m



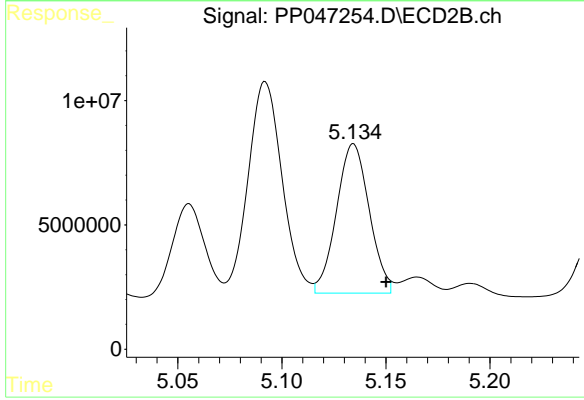
#25 AR-1248-5

R.T.: 6.086 min
 Delta R.T.: -0.018 min
 Response: 38034019
 Conc: 489.00 ng/ml

Instrument :
 ECD_P
 ClientSampleId :
 AR1248CCC500

Manual Integrations
 APPROVED

Reviewed By :Yogesh Patel 05/09/2022
 Supervised By :mohammad ahmed 05/09/2022



#25 AR-1248-5

R.T.: 5.134 min
 Delta R.T.: -0.016 min
 Response: 65680871
 Conc: 538.98 ng/ml m