

Data Path : Z:\pestpcbsrv\HPCHEM1\ECD_P\Data\PP050722\
 Data File : PP047256.D
 Signal(s) : Signal #1: ECD1A.ch Signal #2: ECD2B.ch
 Acq On : 09 May 2022 06:03
 Operator : YP\AJ
 Sample : I.BLK
 Misc :
 ALS Vial : 2 Sample Multiplier: 1

Instrument :
 ECD_P
ClientSampleId :
 I.BLK

Manual Integrations
APPROVED

Reviewed By :Yogesh Patel 05/09/2022
 Supervised By :mohammad ahmed 05/09/2022

Integration File signal 1: autoint1.e
 Integration File signal 2: autoint2.e
 Quant Time: May 09 09:01:40 2022
 Quant Method : Z:\pestpcbsrv\HPCHEM1\ECD_P\methods\PP042222.M
 Quant Title : GC EXTRACTABLES
 QLast Update : Fri May 06 10:17:17 2022
 Response via : Initial Calibration
 Integrator: ChemStation

Volume Inj. : 2 µl
 Signal #1 Phase : ZB-MR1 Signal #2 Phase: ZB-MR2
 Signal #1 Info : 30Mx0.32mmx 0.50µ Signal #2 Info : 30M x 0.32mm x 0.25µm

Compound	RT#1	RT#2	Resp#1	Resp#2	ng/ml	ng/ml

System Monitoring Compounds						
1) SA Tetrachlo...	3.853	3.119	61635422	85871729	25.533	26.177
2) SA Decachlor...	9.919	8.425	37286828	68177063	25.339	28.582m

Target Compounds

(f)=RT Delta > 1/2 Window (#)=Amounts differ by > 25% (m)=manual int.

Data Path : Z:\pestpcbsrv\HPCHEM1\ECD_P\Data\PP050722\
Data File : PP047256.D
Signal(s) : Signal #1: ECD1A.ch Signal #2: ECD2B.ch
Acq On : 09 May 2022 06:03
Operator : YP\AJ
Sample : I.BLK
Misc :
ALS Vial : 2 Sample Multiplier: 1

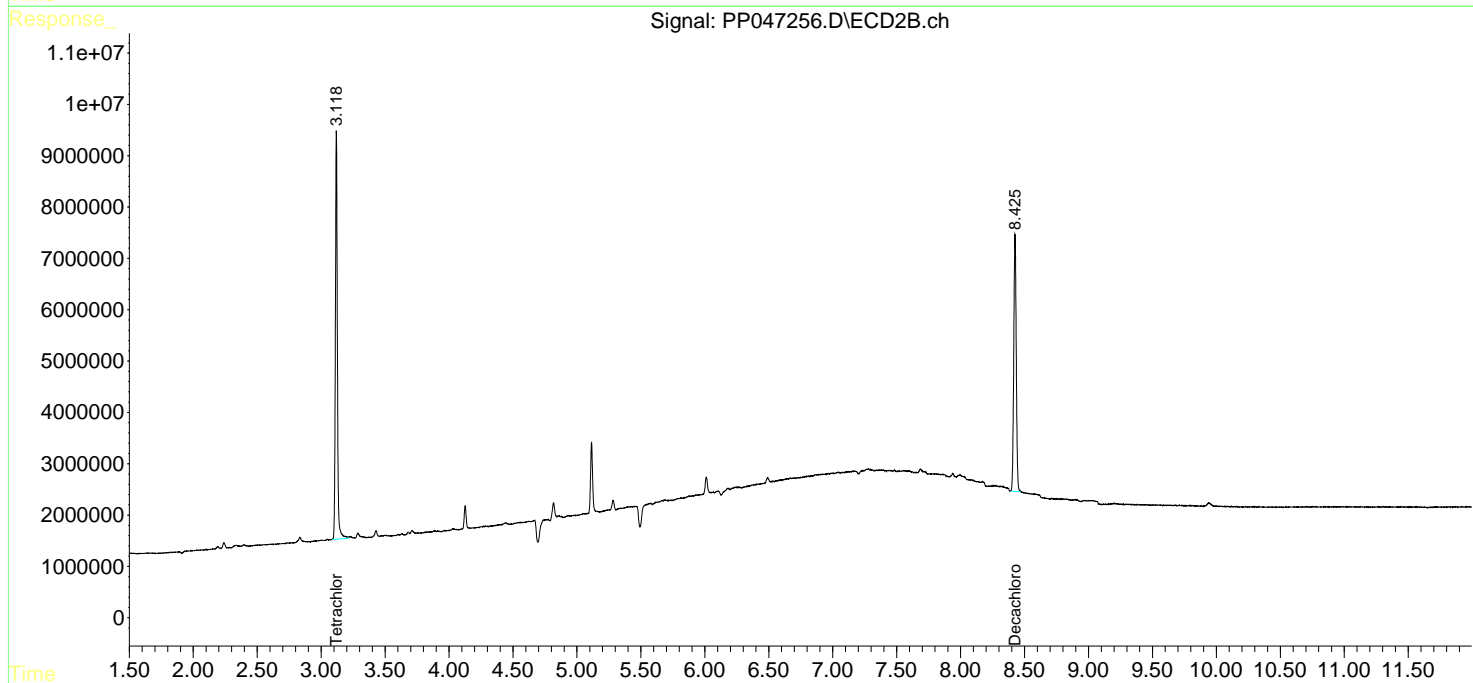
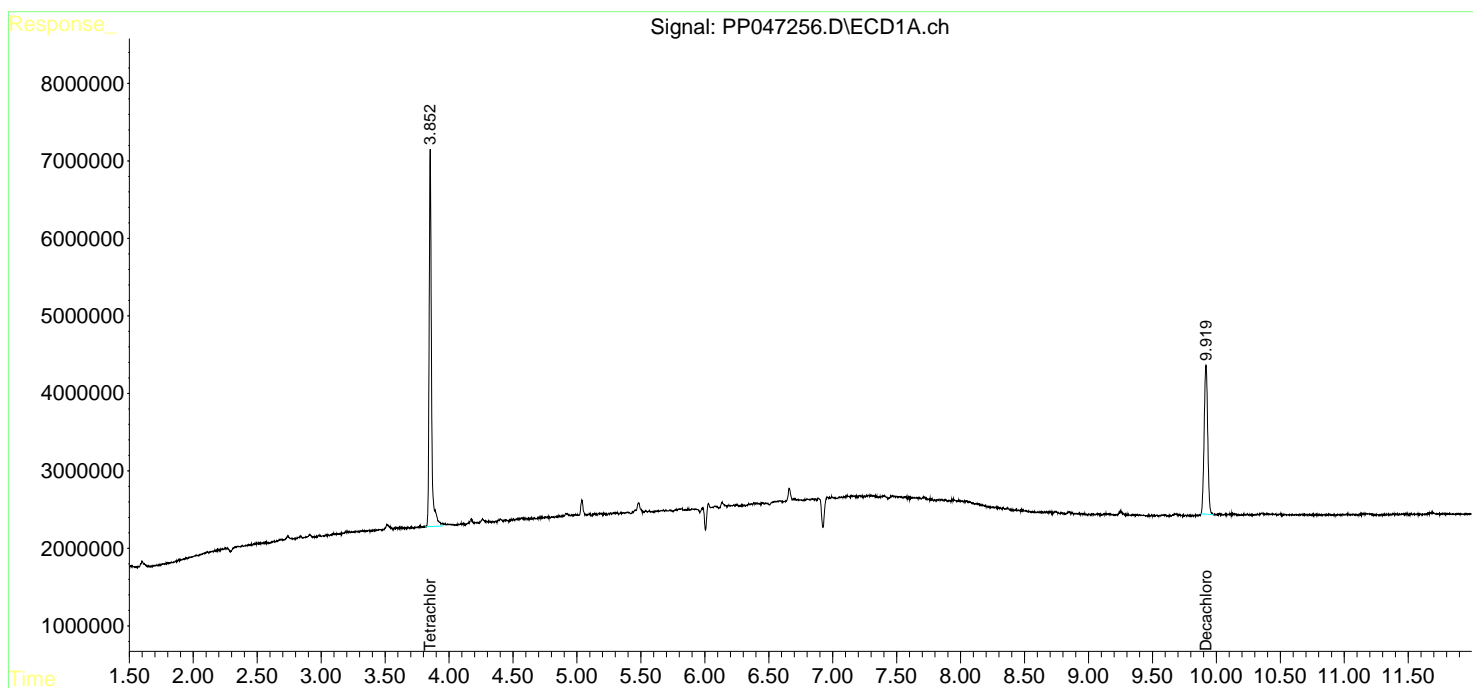
Instrument :
ECD_P
ClientSampleID :
I.BLK

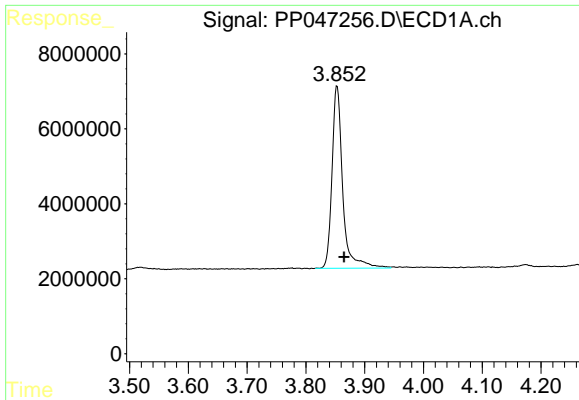
Manual Integrations
APPROVED

Reviewed By :Yogesh Patel 05/09/2022
Supervised By :mohammad ahmed 05/09/2022

Integration File signal 1: autoint1.e
Integration File signal 2: autoint2.e
Quant Time: May 09 09:01:40 2022
Quant Method : Z:\pestpcbsrv\HPCHEM1\ECD_P\methods\PP042222.M
Quant Title : GC EXTRACTABLES
QLast Update : Fri May 06 10:17:17 2022
Response via : Initial Calibration
Integrator: ChemStation

Volume Inj. : 2 µl
Signal #1 Phase : ZB-MR1 Signal #2 Phase: ZB-MR2
Signal #1 Info : 30Mx0.32mmx 0.50µ Signal #2 Info : 30M x 0.32mm x 0.25µm





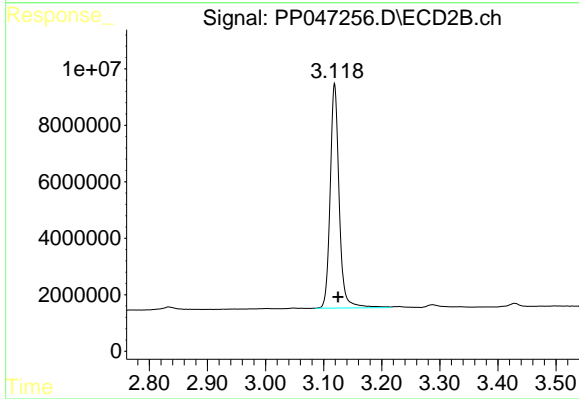
#1 Tetrachloro-m-xylene

R.T.: 3.853 min
 Delta R.T.: -0.012 min
 Response: 61635422
 Conc: 25.53 ng/ml

Instrument :
 ECD_P
 ClientSampleId :
 I.BLK

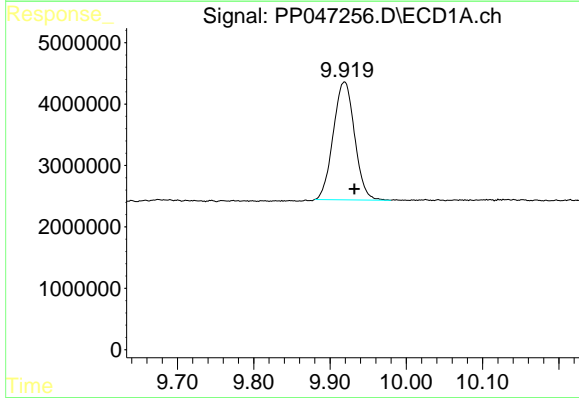
Manual Integrations
 APPROVED

Reviewed By :Yogesh Patel 05/09/2022
 Supervised By :mohammad ahmed 05/09/2022



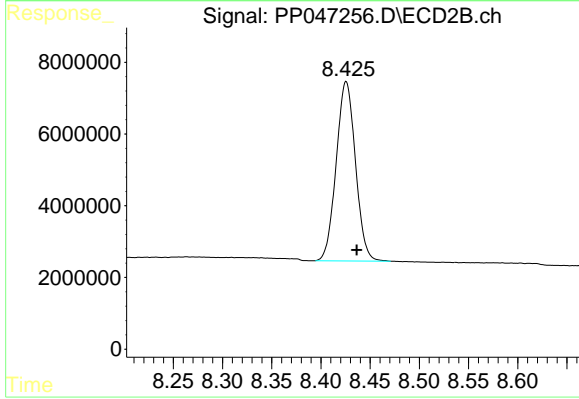
#1 Tetrachloro-m-xylene

R.T.: 3.119 min
 Delta R.T.: -0.006 min
 Response: 85871729
 Conc: 26.18 ng/ml



#2 Decachlorobiphenyl

R.T.: 9.919 min
 Delta R.T.: -0.013 min
 Response: 37286828
 Conc: 25.34 ng/ml



#2 Decachlorobiphenyl

R.T.: 8.425 min
 Delta R.T.: -0.011 min
 Response: 68177063
 Conc: 28.58 ng/ml m