

Data Path : Z:\pestpcbsrv\HPCHEM1\ECD_P\Data\PP050825\
 Data File : PP071874.D
 Signal(s) : Signal #1: ECD1A.ch Signal #2: ECD2B.ch
 Acq On : 08 May 2025 19:11
 Operator : YP\AJ
 Sample : Q1972-09
 Misc :
 ALS Vial : 18 Sample Multiplier: 1

Instrument :
 ECD_P
 ClientSampleId :
 WC-B-2

Integration File signal 1: autoint1.e
 Integration File signal 2: autoint2.e
 Quant Time: May 09 01:54:31 2025
 Quant Method : Z:\pestpcbsrv\HPCHEM1\ECD_P\methods\PP042225.M
 Quant Title : GC EXTRACTABLES
 QLast Update : Wed Apr 23 05:02:06 2025
 Response via : Initial Calibration
 Integrator: ChemStation

Volume Inj. : 2 µl
 Signal #1 Phase : ZB-MR1 Signal #2 Phase: ZB-MR2
 Signal #1 Info : 30Mx0.32mmx 0.50µ Signal #2 Info : 30M x 0.32mm x 0.25µm

Compound	RT#1	RT#2	Resp#1	Resp#2	ng/ml	ng/ml

System Monitoring Compounds						
1) SA Tetrachlo...	4.508	3.804	31381432	26045640	15.828	18.490
2) SA Decachlor...	10.221	8.832	22999939	16645252	15.884	18.979

Target Compounds

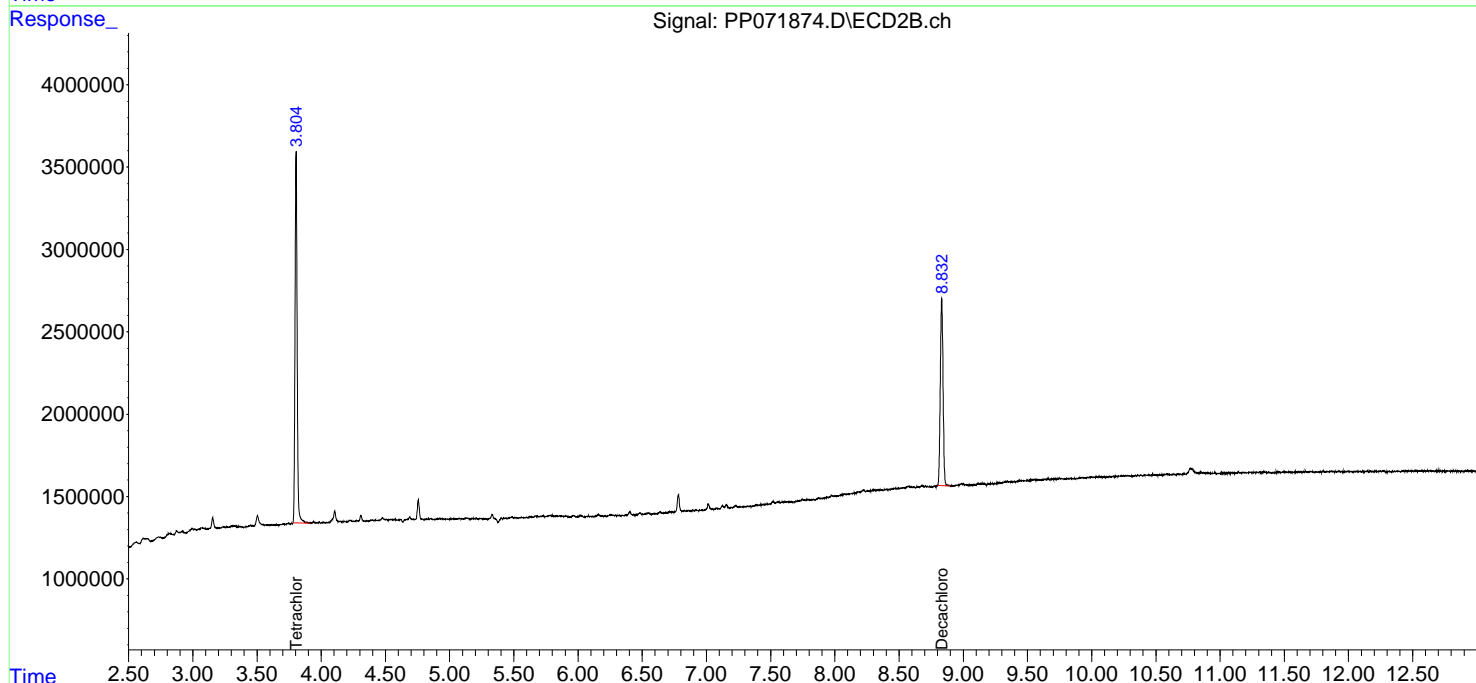
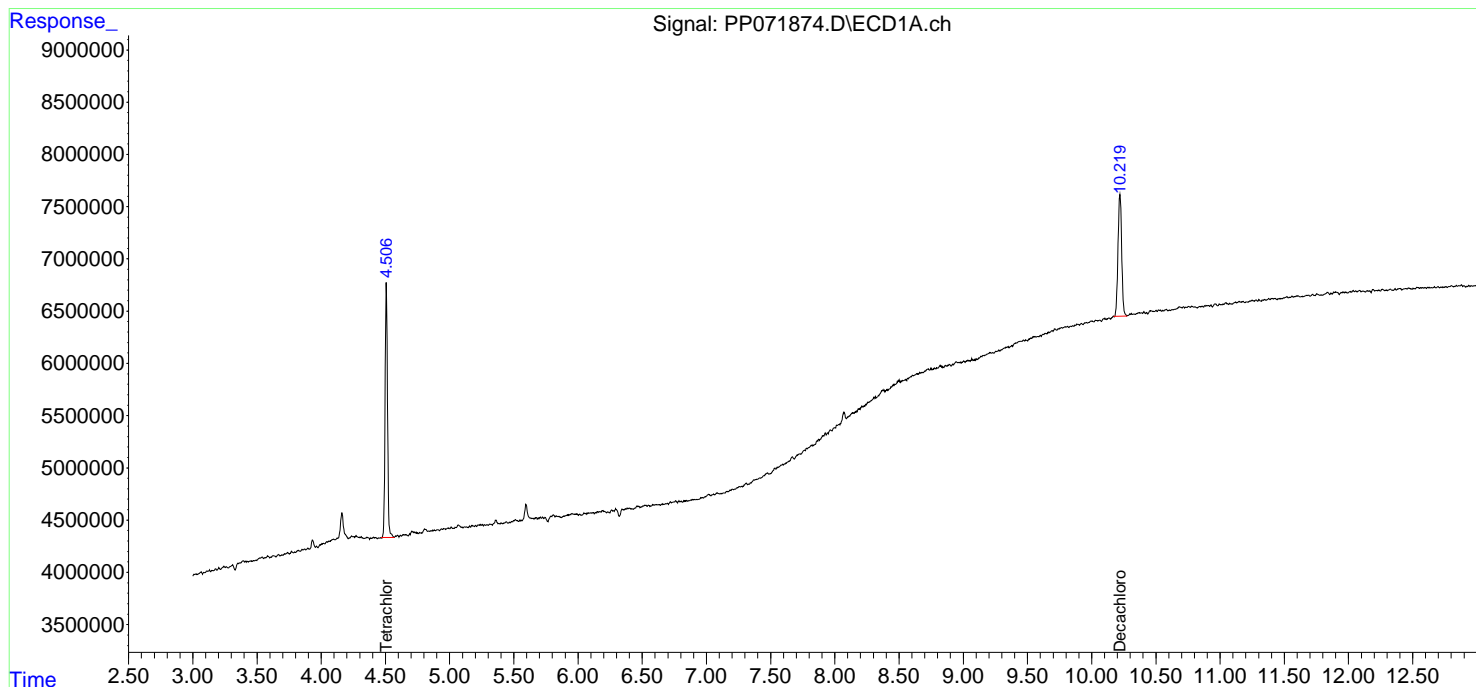
(f)=RT Delta > 1/2 Window (#)=Amounts differ by > 25% (m)=manual int.

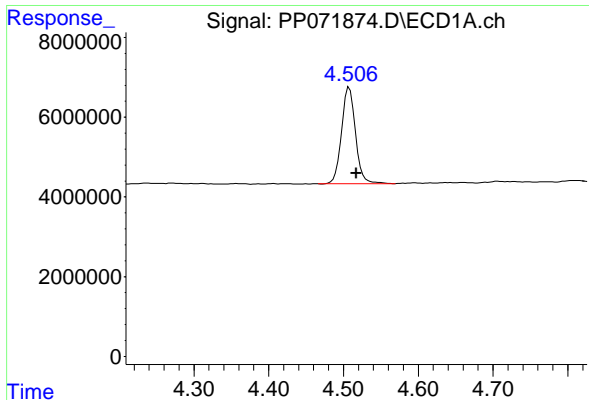
Data Path : Z:\pestpcbsrv\HPCHEM1\ECD_P\Data\PP050825\
 Data File : PP071874.D
 Signal(s) : Signal #1: ECD1A.ch Signal #2: ECD2B.ch
 Acq On : 08 May 2025 19:11
 Operator : YP\AJ
 Sample : Q1972-09
 Misc :
 ALS Vial : 18 Sample Multiplier: 1

Instrument :
 ECD_P
 ClientSampleId :
 WC-B-2

Integration File signal 1: autoint1.e
 Integration File signal 2: autoint2.e
 Quant Time: May 09 01:54:31 2025
 Quant Method : Z:\pestpcbsrv\HPCHEM1\ECD_P\methods\PP042225.M
 Quant Title : GC EXTRACTABLES
 QLast Update : Wed Apr 23 05:02:06 2025
 Response via : Initial Calibration
 Integrator: ChemStation

Volume Inj. : 2 µl
 Signal #1 Phase : ZB-MR1 Signal #2 Phase: ZB-MR2
 Signal #1 Info : 30Mx0.32mmx 0.50µm Signal #2 Info : 30M x 0.32mm x 0.25µm

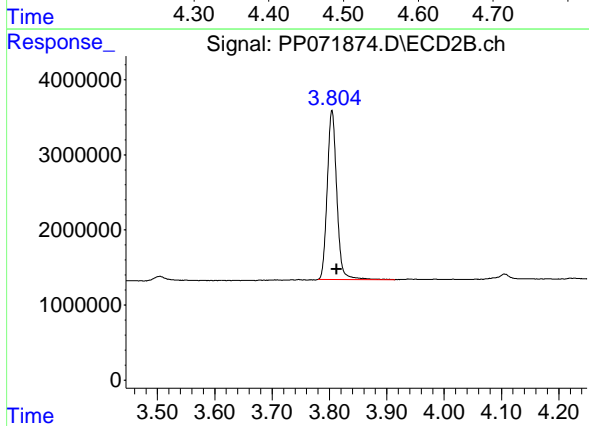




#1 Tetrachloro-m-xylene

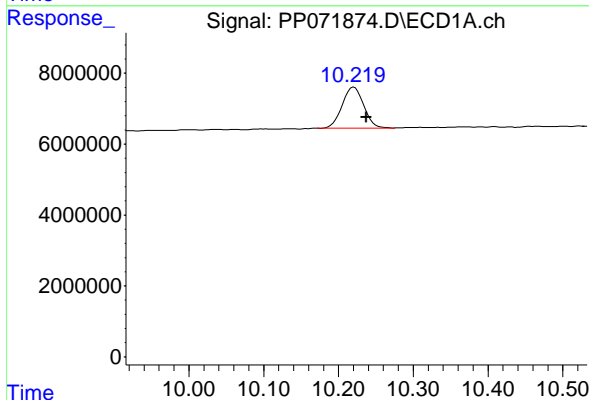
R.T.: 4.508 min
Delta R.T.: -0.009 min
Response: 31381432
Conc: 15.83 ng/ml

Instrument :
ECD_P
ClientSampleId :
WC-B-2



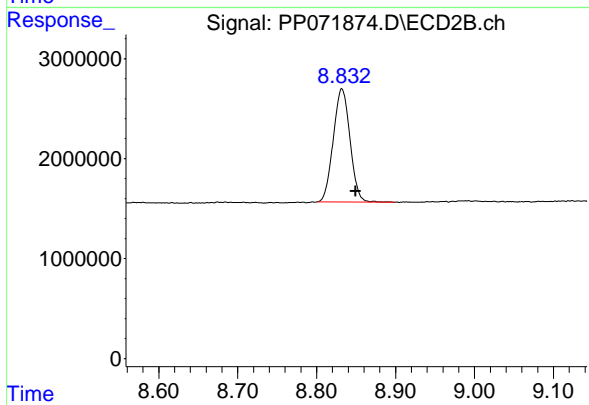
#1 Tetrachloro-m-xylene

R.T.: 3.804 min
Delta R.T.: -0.008 min
Response: 26045640
Conc: 18.49 ng/ml



#2 Decachlorobiphenyl

R.T.: 10.221 min
Delta R.T.: -0.017 min
Response: 22999939
Conc: 15.88 ng/ml



#2 Decachlorobiphenyl

R.T.: 8.832 min
Delta R.T.: -0.017 min
Response: 16645252
Conc: 18.98 ng/ml