

Data Path : Z:\pestpcbsrv\HPCHEM1\ECD\_P\Data\PP050925\  
 Data File : PP071911.D  
 Signal(s) : Signal #1: ECD1A.ch Signal #2: ECD2B.ch  
 Acq On : 09 May 2025 12:31  
 Operator : YP\AJ  
 Sample : Q1973-03DL 5X  
 Misc :  
 ALS Vial : 10 Sample Multiplier: 1

**Instrument :**  
 ECD\_P  
**ClientSampleId :**  
 50692DL

**Manual Integrations**  
**APPROVED**  
 Reviewed By :Yogesh Patel 05/12/2025  
 Supervised By :mohammad ahmed 05/14/2025

Integration File signal 1: autoint1.e  
 Integration File signal 2: autoint2.e  
 Quant Time: May 09 14:33:58 2025  
 Quant Method : Z:\pestpcbsrv\HPCHEM1\ECD\_P\methods\PP042225.M  
 Quant Title : GC EXTRACTABLES  
 QLast Update : Wed Apr 23 05:02:06 2025  
 Response via : Initial Calibration  
 Integrator: ChemStation

Volume Inj. : 2 µl  
 Signal #1 Phase : ZB-MR1 Signal #2 Phase: ZB-MR2  
 Signal #1 Info : 30Mx0.32mmx 0.50µ Signal #2 Info : 30M x 0.32mm x 0.25µm

Compound	RT#1	RT#2	Resp#1	Resp#2	ng/ml	ng/ml
-----						
System Monitoring Compounds						
1) SA Tetrachlo...	4.507	3.803	5447763	4818344	2.748	3.421
2) SA Decachlor...	10.222	8.831	4124253	2880487	2.848	3.284
Target Compounds						
21) L5 AR-1248-1	5.660	4.886	7648812	7245421	178.133	200.668m
22) L5 AR-1248-2	5.931	5.124	11687187	10576918	193.392	216.021
23) L5 AR-1248-3	6.134	5.167	17422865	13152664	260.882	257.464
24) L5 AR-1248-4	6.534	5.339	30662952	17406909	362.400	286.971
25) L5 AR-1248-5	6.573	5.731	29026926	22572203	365.356	387.234
-----						

(f)=RT Delta > 1/2 Window (#)=Amounts differ by > 25% (m)=manual int.

Data Path : Z:\pestpcbsrv\HPCHEM1\ECD\_P\Data\PP050925\  
 Data File : PP071911.D  
 Signal(s) : Signal #1: ECD1A.ch Signal #2: ECD2B.ch  
 Acq On : 09 May 2025 12:31  
 Operator : YP\AJ  
 Sample : Q1973-03DL 5X  
 Misc :  
 ALS Vial : 10 Sample Multiplier: 1

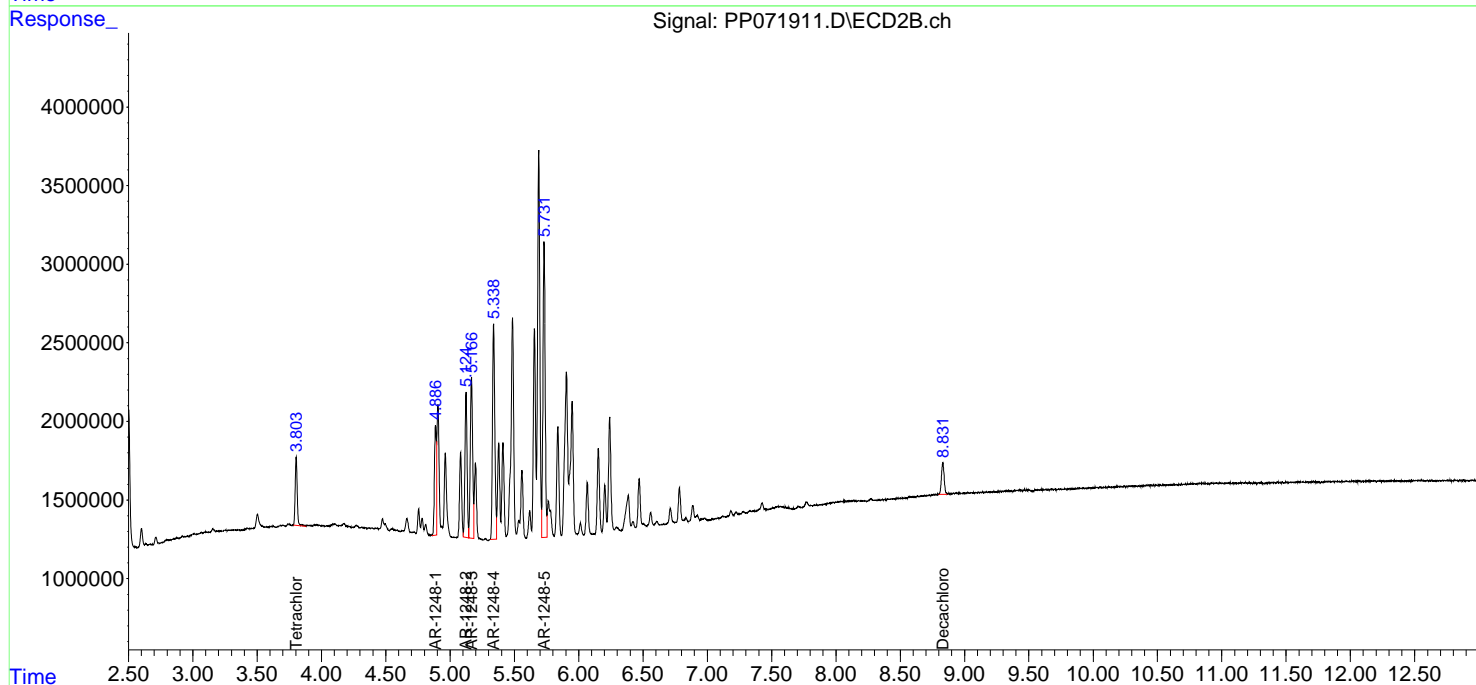
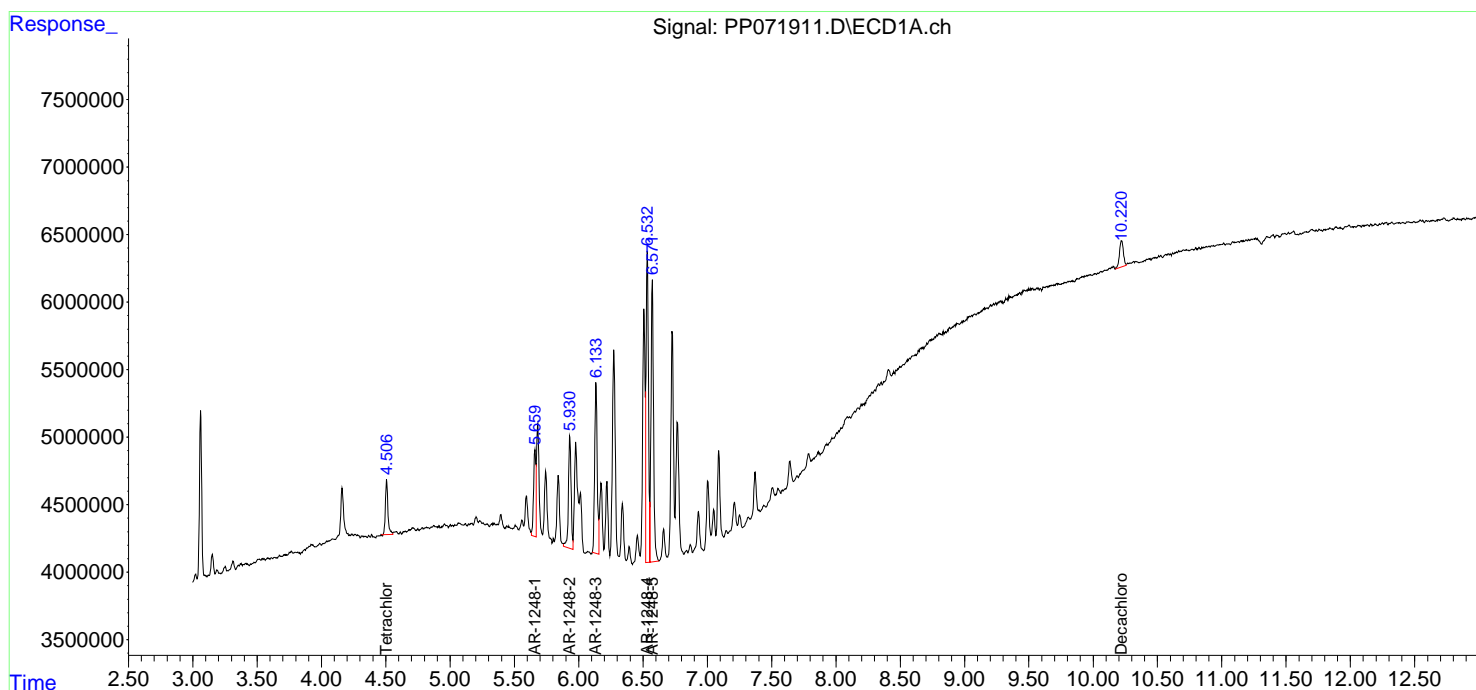
Instrument :  
 ECD\_P  
 ClientSampleId :  
 50692DL

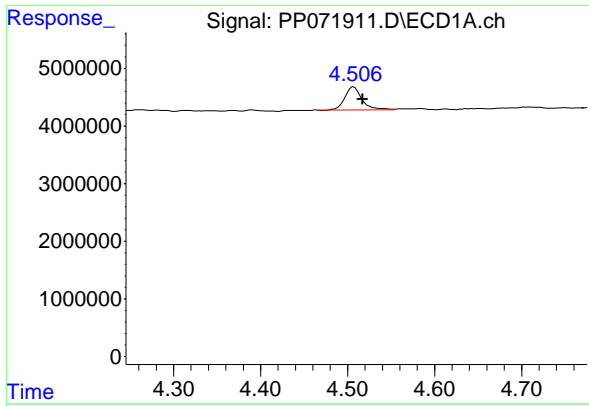
Manual Integrations  
 APPROVED

Reviewed By :Yogesh Patel 05/12/2025  
 Supervised By :mohammad ahmed 05/14/2025

Integration File signal 1: autoint1.e  
 Integration File signal 2: autoint2.e  
 Quant Time: May 09 14:33:58 2025  
 Quant Method : Z:\pestpcbsrv\HPCHEM1\ECD\_P\methods\PP042225.M  
 Quant Title : GC EXTRACTABLES  
 QLast Update : Wed Apr 23 05:02:06 2025  
 Response via : Initial Calibration  
 Integrator: ChemStation

Volume Inj. : 2 µl  
 Signal #1 Phase : ZB-MR1 Signal #2 Phase: ZB-MR2  
 Signal #1 Info : 30Mx0.32mmx 0.50µ Signal #2 Info : 30M x 0.32mm x 0.25µm





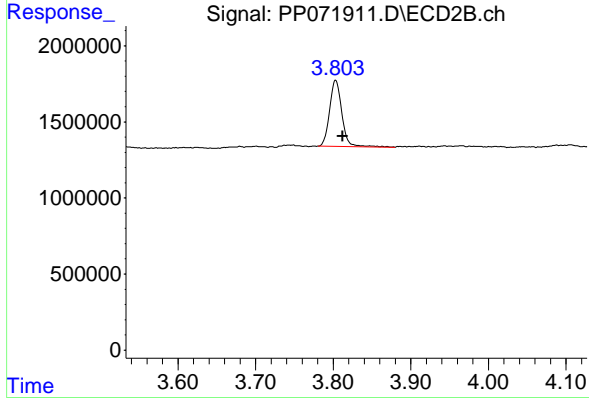
#1 Tetrachloro-m-xylene

R.T.: 4.507 min  
 Delta R.T.: -0.010 min  
 Response: 5447763  
 Conc: 2.75 ng/ml

Instrument : ECD\_P  
 Client Sample Id : 50692DL

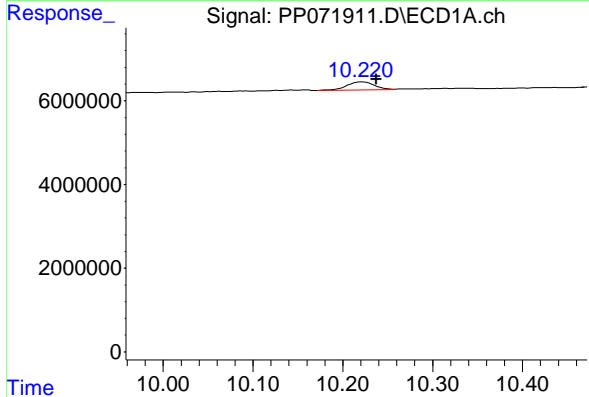
Manual Integrations  
 APPROVED

Reviewed By :Yogesh Patel 05/12/2025  
 Supervised By :mohammad ahmed 05/14/2025



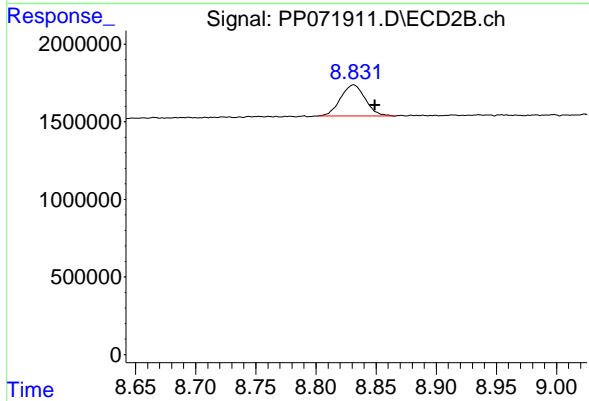
#1 Tetrachloro-m-xylene

R.T.: 3.803 min  
 Delta R.T.: -0.009 min  
 Response: 4818344  
 Conc: 3.42 ng/ml



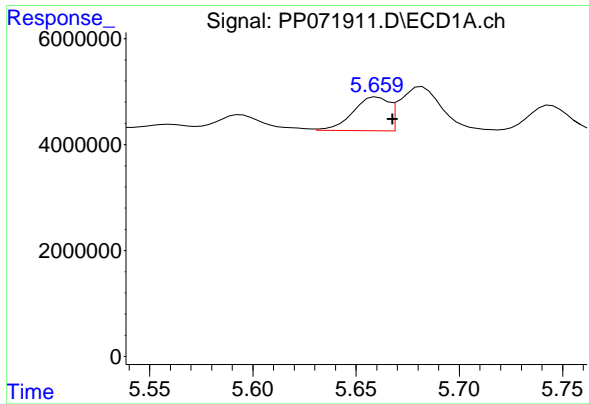
#2 Decachlorobiphenyl

R.T.: 10.222 min  
 Delta R.T.: -0.016 min  
 Response: 4124253  
 Conc: 2.85 ng/ml



#2 Decachlorobiphenyl

R.T.: 8.831 min  
 Delta R.T.: -0.018 min  
 Response: 2880487  
 Conc: 3.28 ng/ml



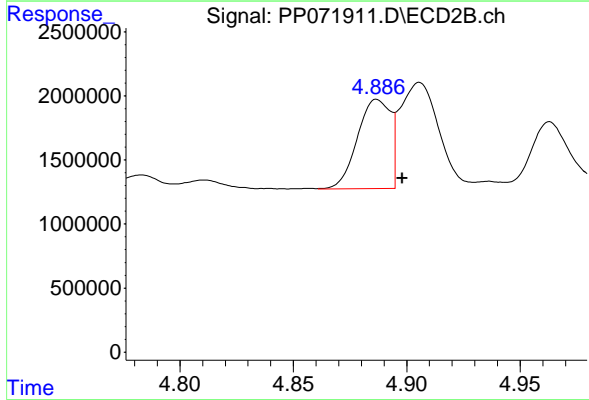
#21 AR-1248-1

R.T.: 5.660 min  
 Delta R.T.: -0.008 min  
 Response: 7648812  
 Conc: 178.13 ng/ml

Instrument : ECD\_P  
 ClientSampleId : 50692DL

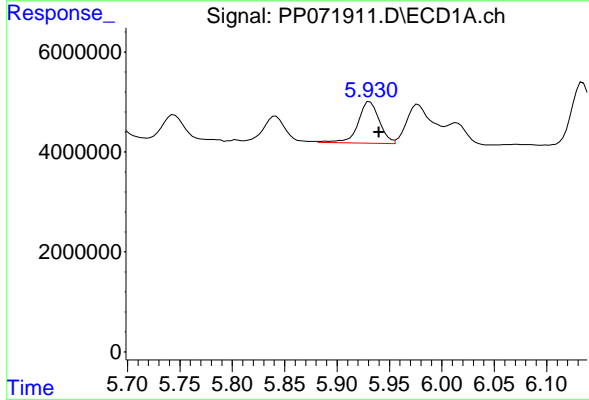
Manual Integrations  
 APPROVED

Reviewed By :Yogesh Patel 05/12/2025  
 Supervised By :mohammad ahmed 05/14/2025



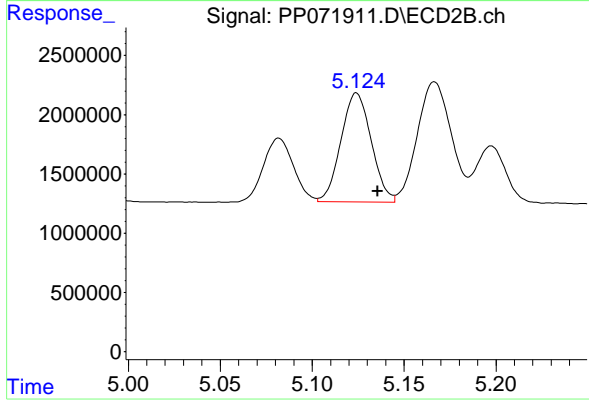
#21 AR-1248-1

R.T.: 4.886 min  
 Delta R.T.: -0.012 min  
 Response: 7245421  
 Conc: 200.67 ng/ml m



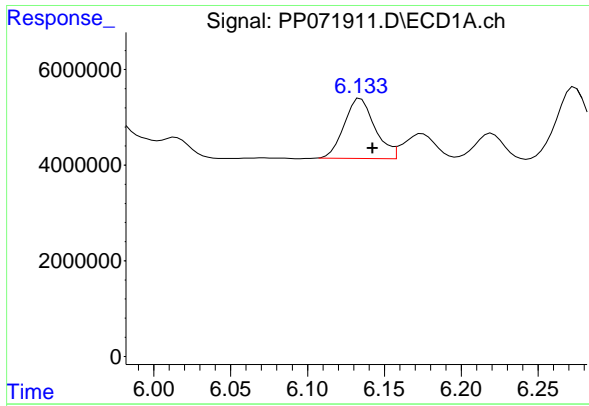
#22 AR-1248-2

R.T.: 5.931 min  
 Delta R.T.: -0.009 min  
 Response: 11687187  
 Conc: 193.39 ng/ml



#22 AR-1248-2

R.T.: 5.124 min  
 Delta R.T.: -0.012 min  
 Response: 10576918  
 Conc: 216.02 ng/ml



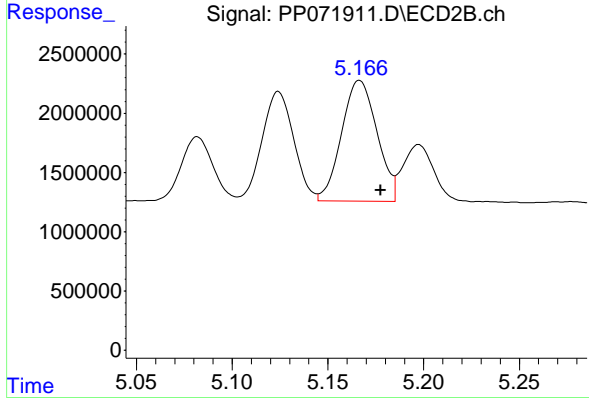
#23 AR-1248-3

R.T.: 6.134 min  
 Delta R.T.: -0.008 min  
 Response: 17422865  
 Conc: 260.88 ng/ml

Instrument :  
 ECD\_P  
 ClientSampleId :  
 50692DL

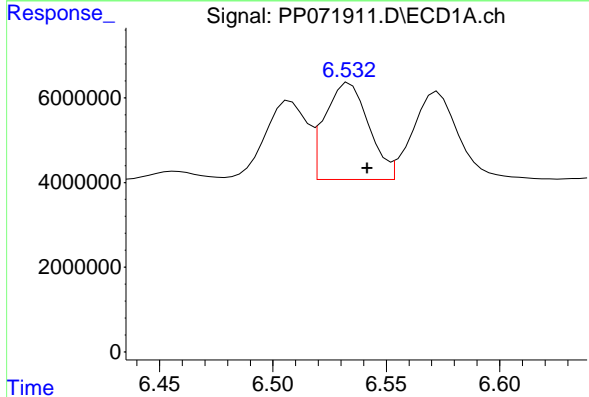
Manual Integrations  
 APPROVED

Reviewed By :Yogesh Patel 05/12/2025  
 Supervised By :mohammad ahmed 05/14/2025



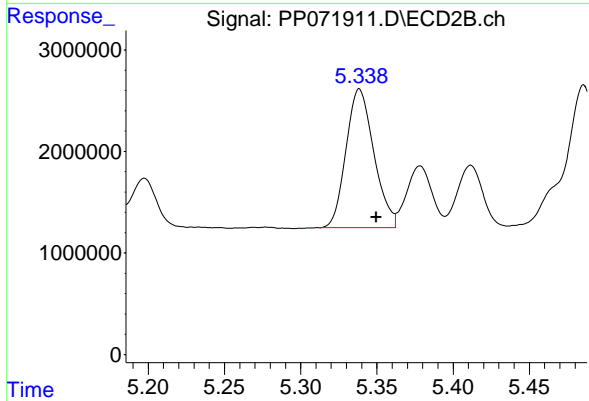
#23 AR-1248-3

R.T.: 5.167 min  
 Delta R.T.: -0.011 min  
 Response: 13152664  
 Conc: 257.46 ng/ml



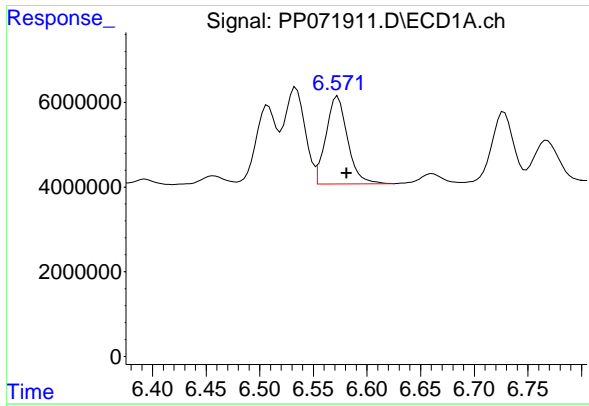
#24 AR-1248-4

R.T.: 6.534 min  
 Delta R.T.: -0.008 min  
 Response: 30662952  
 Conc: 362.40 ng/ml



#24 AR-1248-4

R.T.: 5.339 min  
 Delta R.T.: -0.011 min  
 Response: 17406909  
 Conc: 286.97 ng/ml



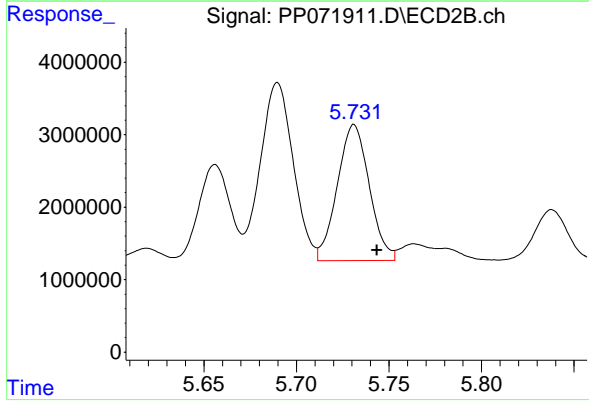
#25 AR-1248-5

R.T.: 6.573 min  
 Delta R.T.: -0.008 min  
 Response: 29026926  
 Conc: 365.36 ng/ml

Instrument :  
 ECD\_P  
 ClientSampleId :  
 50692DL

Manual Integrations  
 APPROVED

Reviewed By :Yogesh Patel 05/12/2025  
 Supervised By :mohammad ahmed 05/14/2025



#25 AR-1248-5

R.T.: 5.731 min  
 Delta R.T.: -0.012 min  
 Response: 22572203  
 Conc: 387.23 ng/ml