

Data Path : Z:\pestpcbsrv\HPCHEM1\ECD_P\Data\PP050925\
 Data File : PP071918.D
 Signal(s) : Signal #1: ECD1A.ch Signal #2: ECD2B.ch
 Acq On : 09 May 2025 15:47
 Operator : YP\AJ
 Sample : AR1660CCC500
 Misc :
 ALS Vial : 3 Sample Multiplier: 1

Instrument :
 ECD_P
ClientSampleId :
 AR1660CCC500

Manual Integrations
APPROVED
 Reviewed By :Yogesh Patel 05/12/2025
 Supervised By :mohammad ahmed 05/14/2025

Integration File signal 1: autoint1.e
 Integration File signal 2: autoint2.e
 Quant Time: May 10 00:30:43 2025
 Quant Method : Z:\pestpcbsrv\HPCHEM1\ECD_P\methods\PP042225.M
 Quant Title : GC EXTRACTABLES
 QLast Update : Wed Apr 23 05:02:06 2025
 Response via : Initial Calibration
 Integrator: ChemStation

Volume Inj. : 2 µl
 Signal #1 Phase : ZB-MR1 Signal #2 Phase: ZB-MR2
 Signal #1 Info : 30Mx0.32mmx 0.50µ Signal #2 Info : 30M x 0.32mm x 0.25µm

Compound	RT#1	RT#2	Resp#1	Resp#2	ng/ml	ng/ml

System Monitoring Compounds						
1) SA Tetrachlo...	4.510	3.805	99237165	76625980	50.053	54.397
2) SA Decachlor...	10.222	8.833	74827161	48096434	51.676	54.839
Target Compounds						
3) L1 AR-1016-1	5.663	4.888	33406220	25800396	498.230	481.948m
4) L1 AR-1016-2	5.685	4.906	50949695	41578344	496.449	544.478m
5) L1 AR-1016-3	5.747	5.084	30697448	22159871	497.954	524.986
6) L1 AR-1016-4	5.845	5.125	25500862	18278139	497.111	530.017
7) L1 AR-1016-5	6.137	5.340	23724709	23625987	491.822	531.551
31) L7 AR-1260-1	7.255	6.373	46625877	38991342	485.562	539.305
32) L7 AR-1260-2	7.509	6.562	69427269	47165382	485.243	539.271
33) L7 AR-1260-3	7.868	6.715	56862054	43017043	507.226	548.774
34) L7 AR-1260-4	8.091	7.185	55108863	35069166	488.273	555.678
35) L7 AR-1260-5	8.411	7.427	115.7E6	84133435	510.701	557.998

(f)=RT Delta > 1/2 Window (#)=Amounts differ by > 25% (m)=manual int.

Data Path : Z:\pestpcbsrv\HPCHEM1\ECD_P\Data\PP050925\
 Data File : PP071918.D
 Signal(s) : Signal #1: ECD1A.ch Signal #2: ECD2B.ch
 Acq On : 09 May 2025 15:47
 Operator : YP\AJ
 Sample : AR1660CCC500
 Misc :
 ALS Vial : 3 Sample Multiplier: 1

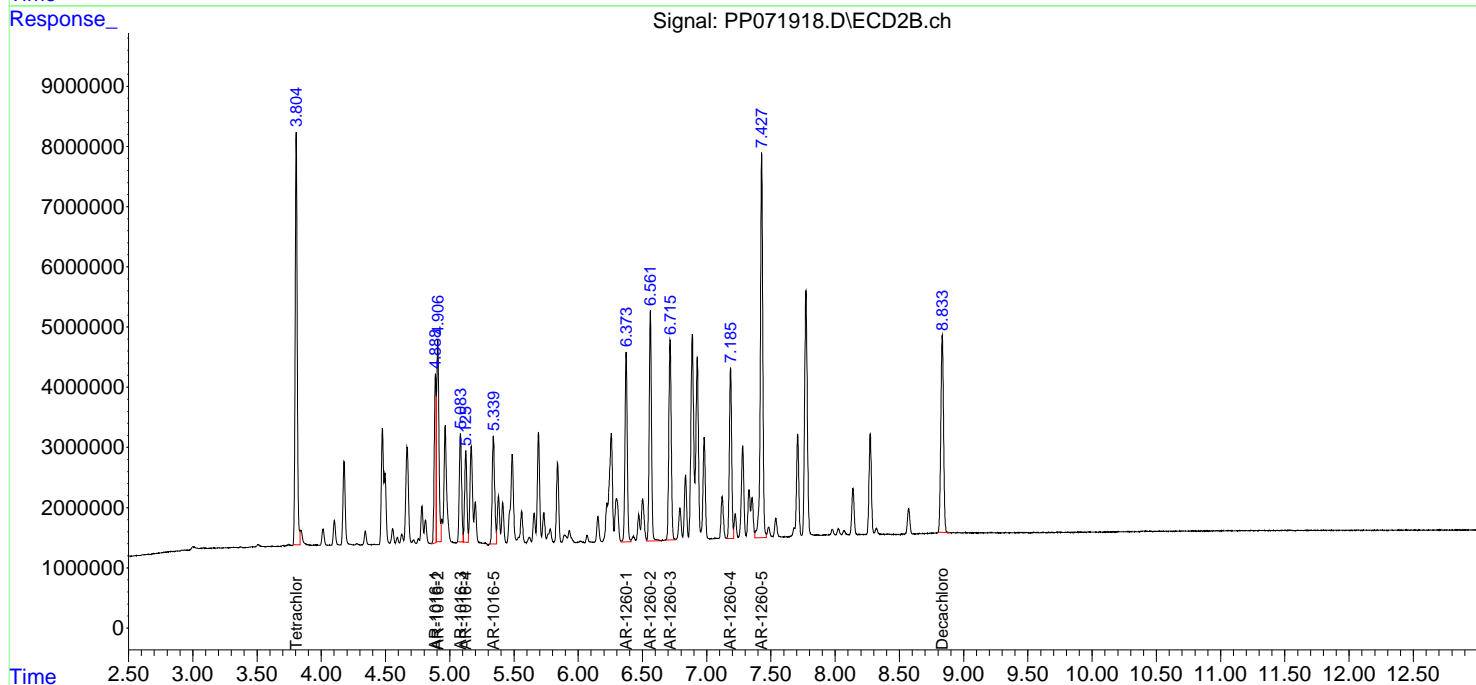
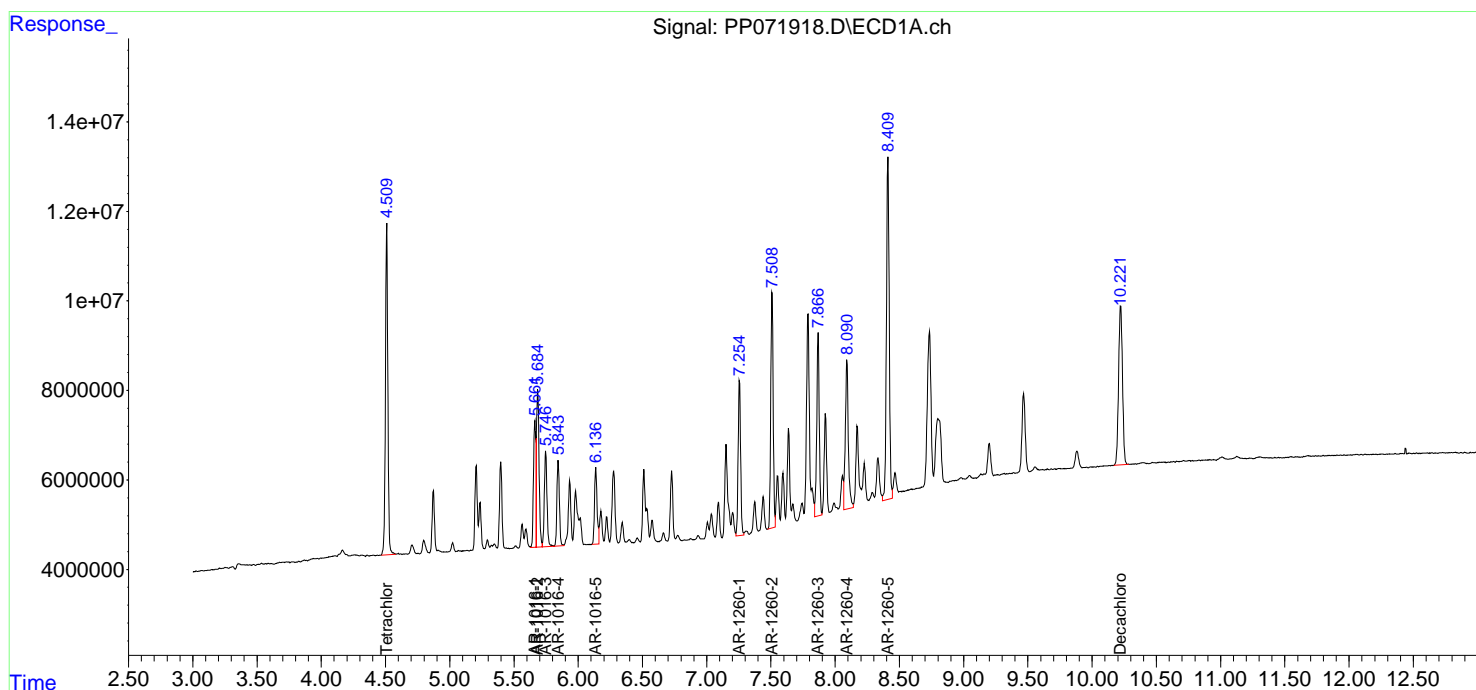
Instrument :
 ECD_P
 ClientSampleId :
 AR1660CCC500

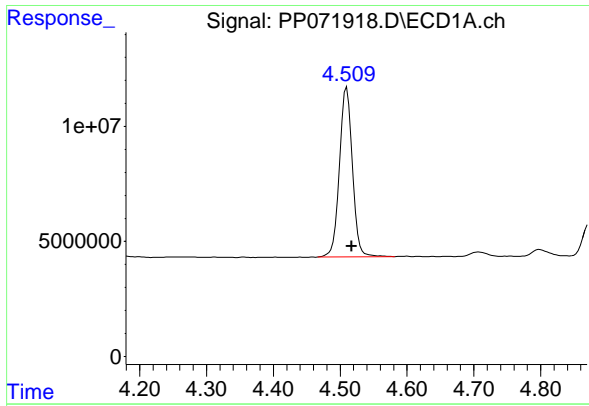
Manual Integrations
 APPROVED

Reviewed By :Yogesh Patel 05/12/2025
 Supervised By :mohammad ahmed 05/14/2025

Integration File signal 1: autoint1.e
 Integration File signal 2: autoint2.e
 Quant Time: May 10 00:30:43 2025
 Quant Method : Z:\pestpcbsrv\HPCHEM1\ECD_P\methods\PP042225.M
 Quant Title : GC EXTRACTABLES
 QLast Update : Wed Apr 23 05:02:06 2025
 Response via : Initial Calibration
 Integrator: ChemStation

Volume Inj. : 2 µl
 Signal #1 Phase : ZB-MR1 Signal #2 Phase: ZB-MR2
 Signal #1 Info : 30Mx0.32mmx 0.50µ Signal #2 Info : 30M x 0.32mm x 0.25µm





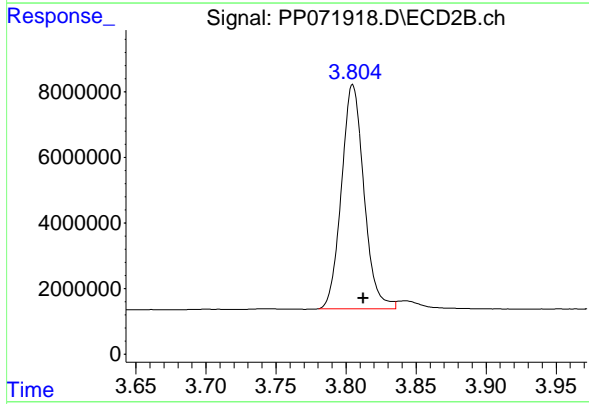
#1 Tetrachloro-m-xylene

R.T.: 4.510 min
 Delta R.T.: -0.007 min
 Response: 99237165
 Conc: 50.05 ng/ml

Instrument : ECD_P
 Client Sample Id : AR1660CCC500

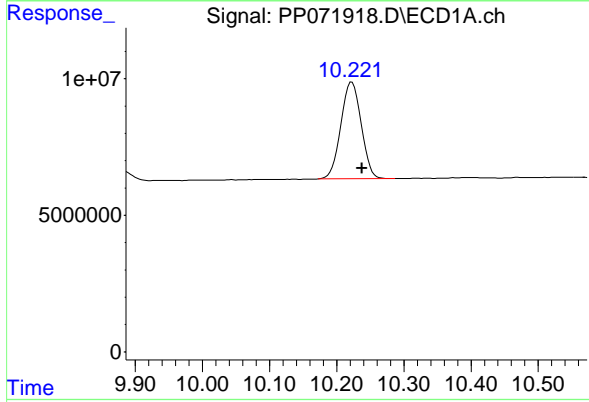
Manual Integrations
 APPROVED

Reviewed By :Yogesh Patel 05/12/2025
 Supervised By :mohammad ahmed 05/14/2025



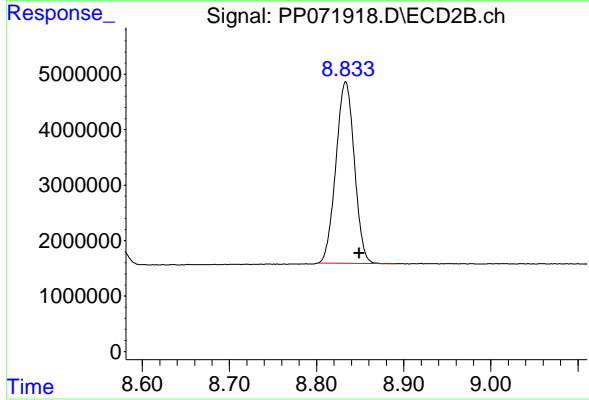
#1 Tetrachloro-m-xylene

R.T.: 3.805 min
 Delta R.T.: -0.007 min
 Response: 76625980
 Conc: 54.40 ng/ml



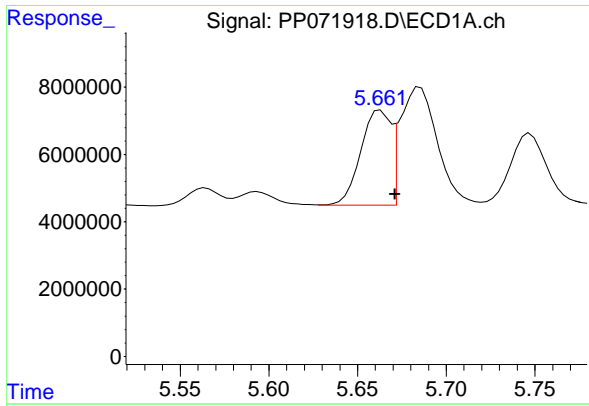
#2 Decachlorobiphenyl

R.T.: 10.222 min
 Delta R.T.: -0.015 min
 Response: 74827161
 Conc: 51.68 ng/ml



#2 Decachlorobiphenyl

R.T.: 8.833 min
 Delta R.T.: -0.016 min
 Response: 48096434
 Conc: 54.84 ng/ml



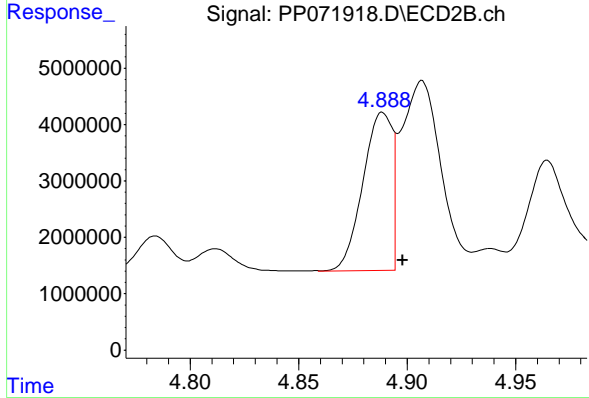
#3 AR-1016-1

R.T.: 5.663 min
 Delta R.T.: -0.008 min
 Response: 33406220
 Conc: 498.23 ng/ml

Instrument : ECD_P
 Client Sample Id : AR1660CCC500

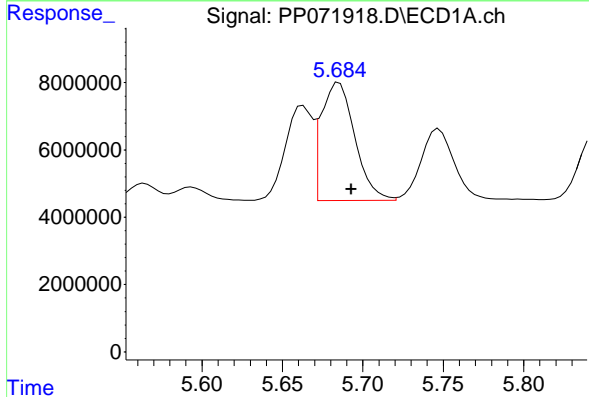
Manual Integrations
 APPROVED

Reviewed By :Yogesh Patel 05/12/2025
 Supervised By :mohammad ahmed 05/14/2025



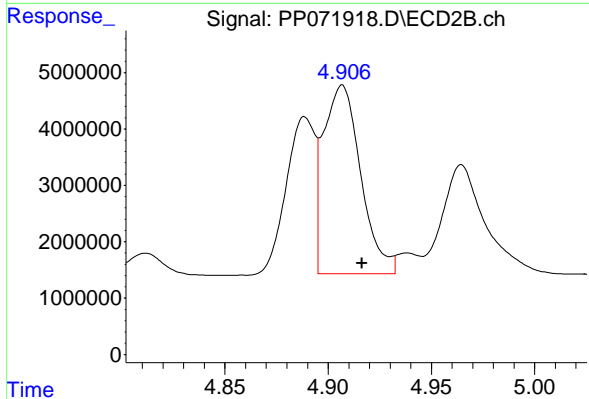
#3 AR-1016-1

R.T.: 4.888 min
 Delta R.T.: -0.010 min
 Response: 25800396
 Conc: 481.95 ng/ml m



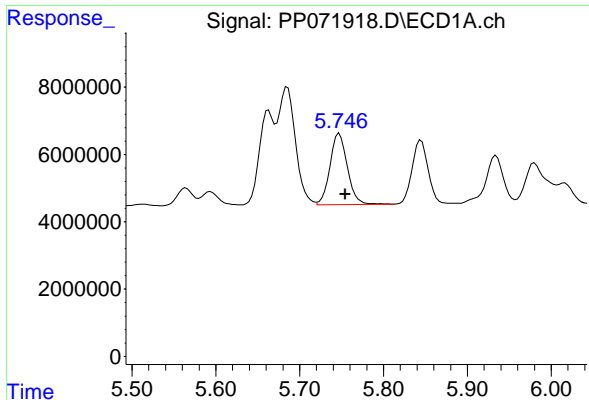
#4 AR-1016-2

R.T.: 5.685 min
 Delta R.T.: -0.008 min
 Response: 50949695
 Conc: 496.45 ng/ml



#4 AR-1016-2

R.T.: 4.906 min
 Delta R.T.: -0.010 min
 Response: 41578344
 Conc: 544.48 ng/ml m



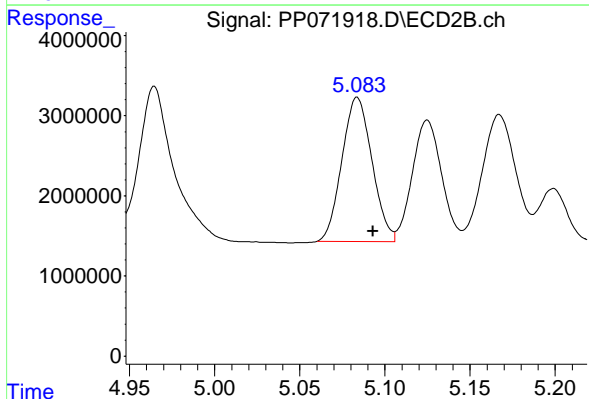
#5 AR-1016-3

R.T.: 5.747 min
 Delta R.T.: -0.007 min
 Response: 30697448
 Conc: 497.95 ng/ml

Instrument :
 ECD_P
 ClientSampleId :
 AR1660CCC500

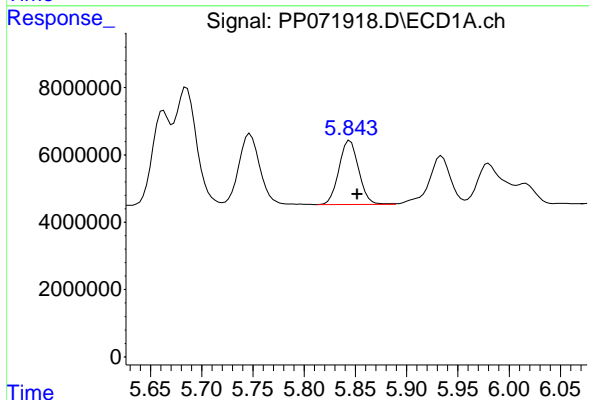
Manual Integrations
 APPROVED

Reviewed By :Yogesh Patel 05/12/2025
 Supervised By :mohammad ahmed 05/14/2025



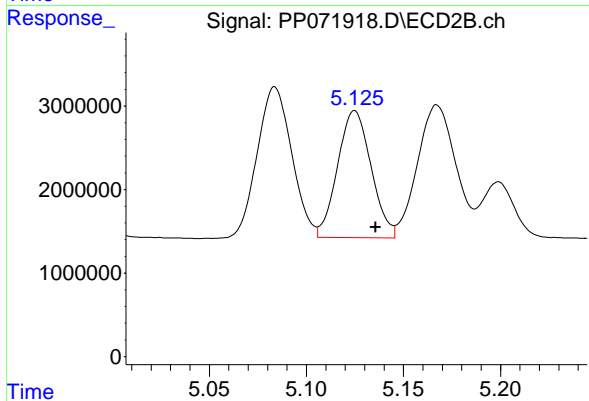
#5 AR-1016-3

R.T.: 5.084 min
 Delta R.T.: -0.009 min
 Response: 22159871
 Conc: 524.99 ng/ml



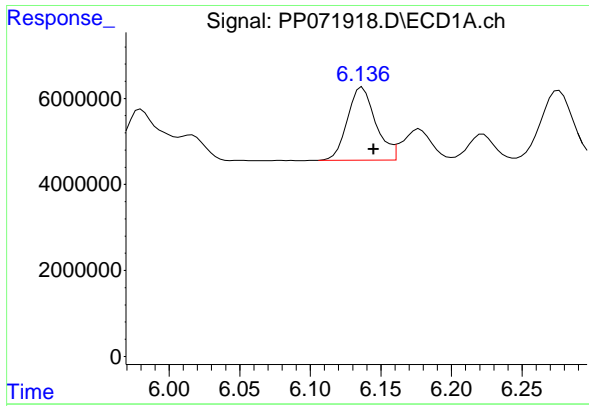
#6 AR-1016-4

R.T.: 5.845 min
 Delta R.T.: -0.007 min
 Response: 25500862
 Conc: 497.11 ng/ml



#6 AR-1016-4

R.T.: 5.125 min
 Delta R.T.: -0.011 min
 Response: 18278139
 Conc: 530.02 ng/ml



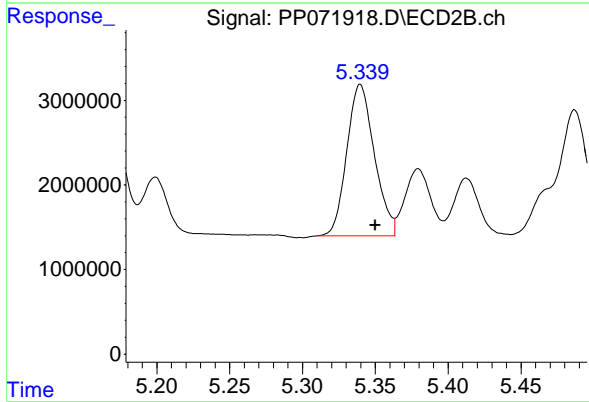
#7 AR-1016-5

R.T.: 6.137 min
 Delta R.T.: -0.008 min
 Response: 23724709
 Conc: 491.82 ng/ml

Instrument :
 ECD_P
 ClientSampleId :
 AR1660CCC500

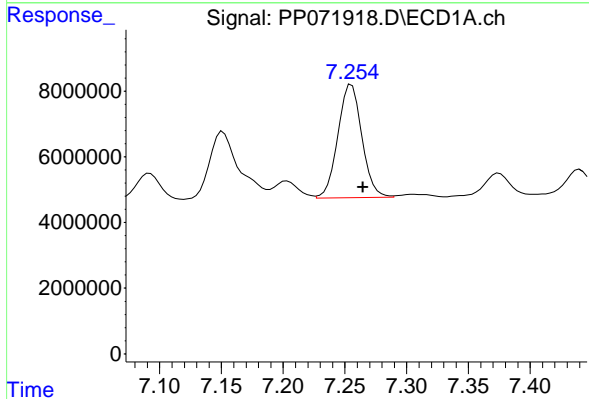
Manual Integrations
 APPROVED

Reviewed By :Yogesh Patel 05/12/2025
 Supervised By :mohammad ahmed 05/14/2025



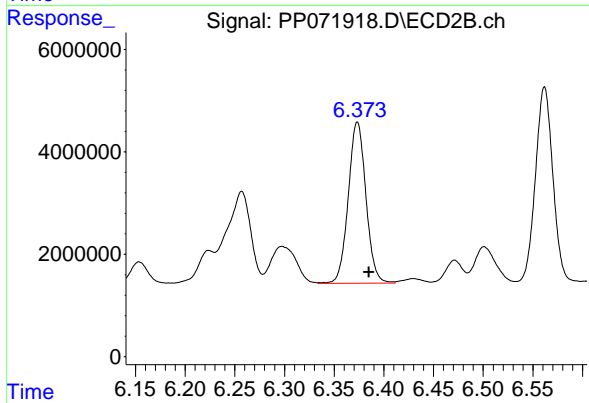
#7 AR-1016-5

R.T.: 5.340 min
 Delta R.T.: -0.010 min
 Response: 23625987
 Conc: 531.55 ng/ml



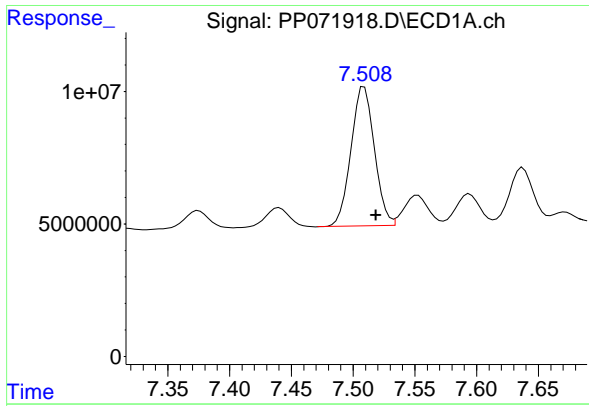
#31 AR-1260-1

R.T.: 7.255 min
 Delta R.T.: -0.009 min
 Response: 46625877
 Conc: 485.56 ng/ml



#31 AR-1260-1

R.T.: 6.373 min
 Delta R.T.: -0.012 min
 Response: 38991342
 Conc: 539.31 ng/ml



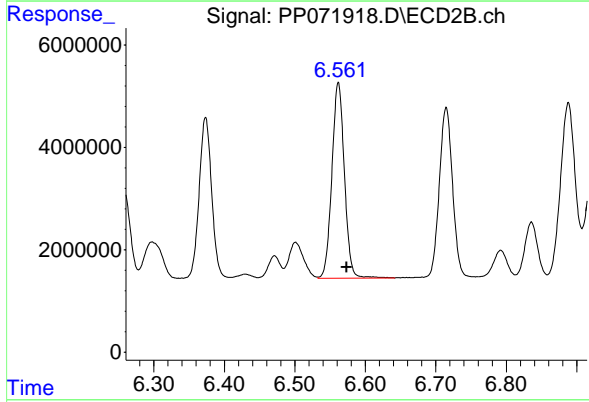
#32 AR-1260-2

R.T.: 7.509 min
 Delta R.T.: -0.009 min
 Response: 69427269
 Conc: 485.24 ng/ml

Instrument :
 ECD_P
 Client Sample Id :
 AR1660CCC500

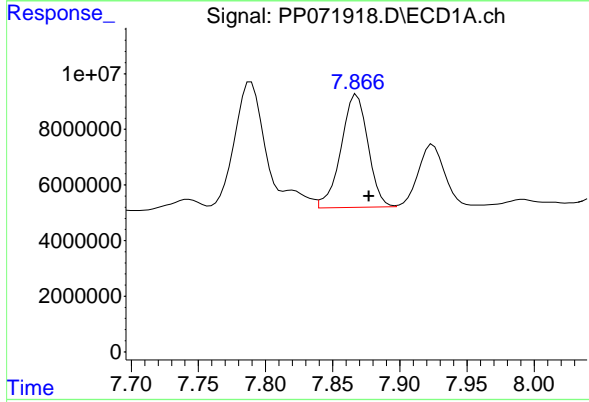
Manual Integrations
 APPROVED

Reviewed By :Yogesh Patel 05/12/2025
 Supervised By :mohammad ahmed 05/14/2025



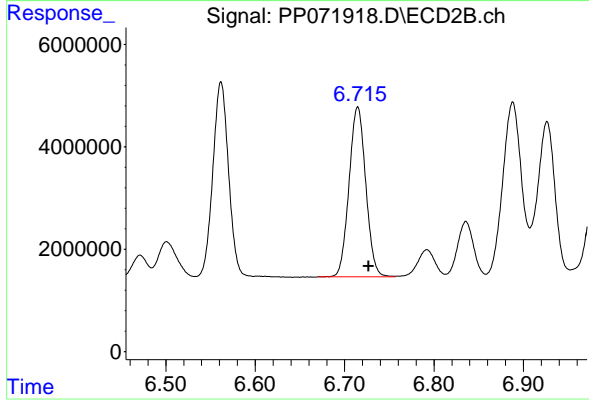
#32 AR-1260-2

R.T.: 6.562 min
 Delta R.T.: -0.012 min
 Response: 47165382
 Conc: 539.27 ng/ml



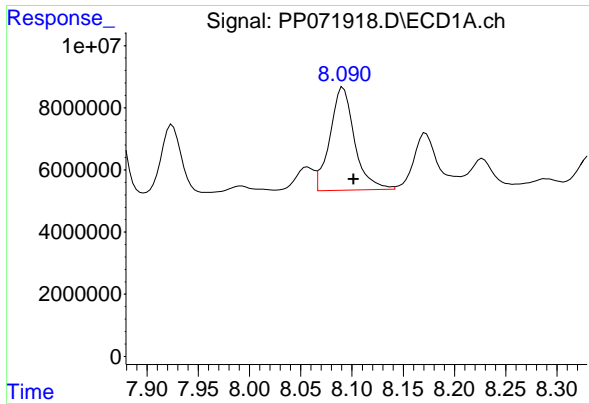
#33 AR-1260-3

R.T.: 7.868 min
 Delta R.T.: -0.009 min
 Response: 56862054
 Conc: 507.23 ng/ml



#33 AR-1260-3

R.T.: 6.715 min
 Delta R.T.: -0.012 min
 Response: 43017043
 Conc: 548.77 ng/ml



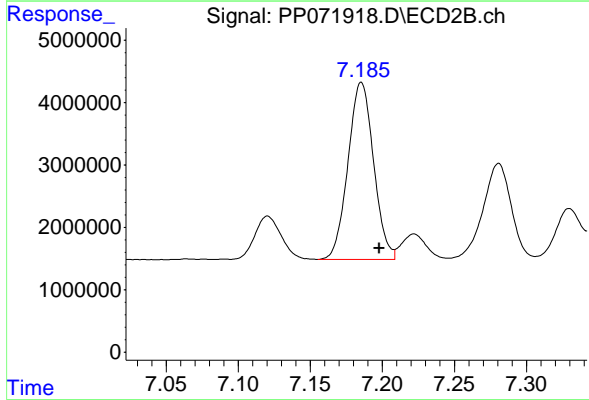
#34 AR-1260-4

R.T.: 8.091 min
 Delta R.T.: -0.010 min
 Response: 55108863
 Conc: 488.27 ng/ml

Instrument : ECD_P
 ClientSampleId : AR1660CCC500

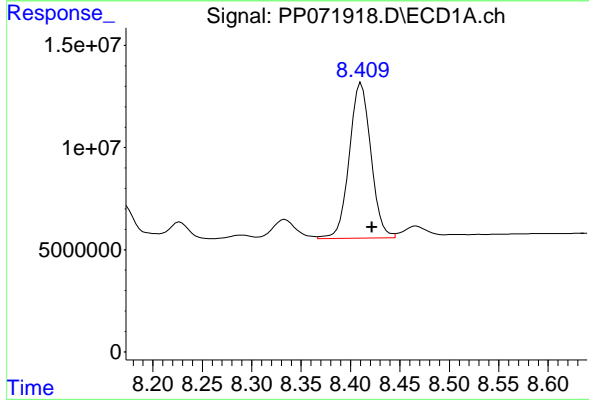
Manual Integrations
 APPROVED

Reviewed By :Yogesh Patel 05/12/2025
 Supervised By :mohammad ahmed 05/14/2025



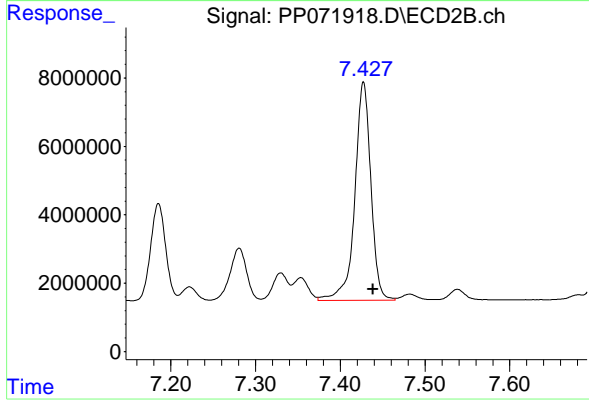
#34 AR-1260-4

R.T.: 7.185 min
 Delta R.T.: -0.012 min
 Response: 35069166
 Conc: 555.68 ng/ml



#35 AR-1260-5

R.T.: 8.411 min
 Delta R.T.: -0.011 min
 Response: 115711282
 Conc: 510.70 ng/ml



#35 AR-1260-5

R.T.: 7.427 min
 Delta R.T.: -0.011 min
 Response: 84133435
 Conc: 558.00 ng/ml