

Data Path : Z:\pestpcbsrv\HPCHEM1\ECD\_P\Data\PP050925\  
 Data File : PP071924.D  
 Signal(s) : Signal #1: ECD1A.ch Signal #2: ECD2B.ch  
 Acq On : 09 May 2025 17:25  
 Operator : YP\AJ  
 Sample : Q1983-25  
 Misc :  
 ALS Vial : 18 Sample Multiplier: 1

Instrument :  
 ECD\_P  
 ClientSampleId :  
 OR-636-COMP-05

Integration File signal 1: autoint1.e  
 Integration File signal 2: autoint2.e  
 Quant Time: May 10 00:32:26 2025  
 Quant Method : Z:\pestpcbsrv\HPCHEM1\ECD\_P\methods\PP042225.M  
 Quant Title : GC EXTRACTABLES  
 QLast Update : Wed Apr 23 05:02:06 2025  
 Response via : Initial Calibration  
 Integrator: ChemStation

Volume Inj. : 2 µl  
 Signal #1 Phase : ZB-MR1 Signal #2 Phase: ZB-MR2  
 Signal #1 Info : 30Mx0.32mmx 0.50µ Signal #2 Info : 30M x 0.32mm x 0.25µm

Compound	RT#1	RT#2	Resp#1	Resp#2	ng/ml	ng/ml
-----						
System Monitoring Compounds						
1) SA Tetrachlo...	4.505	3.803	44330580	34332128	22.359	24.373
2) SA Decachlor...	10.217	8.830	27539127	18551944	19.019	21.153

Target Compounds

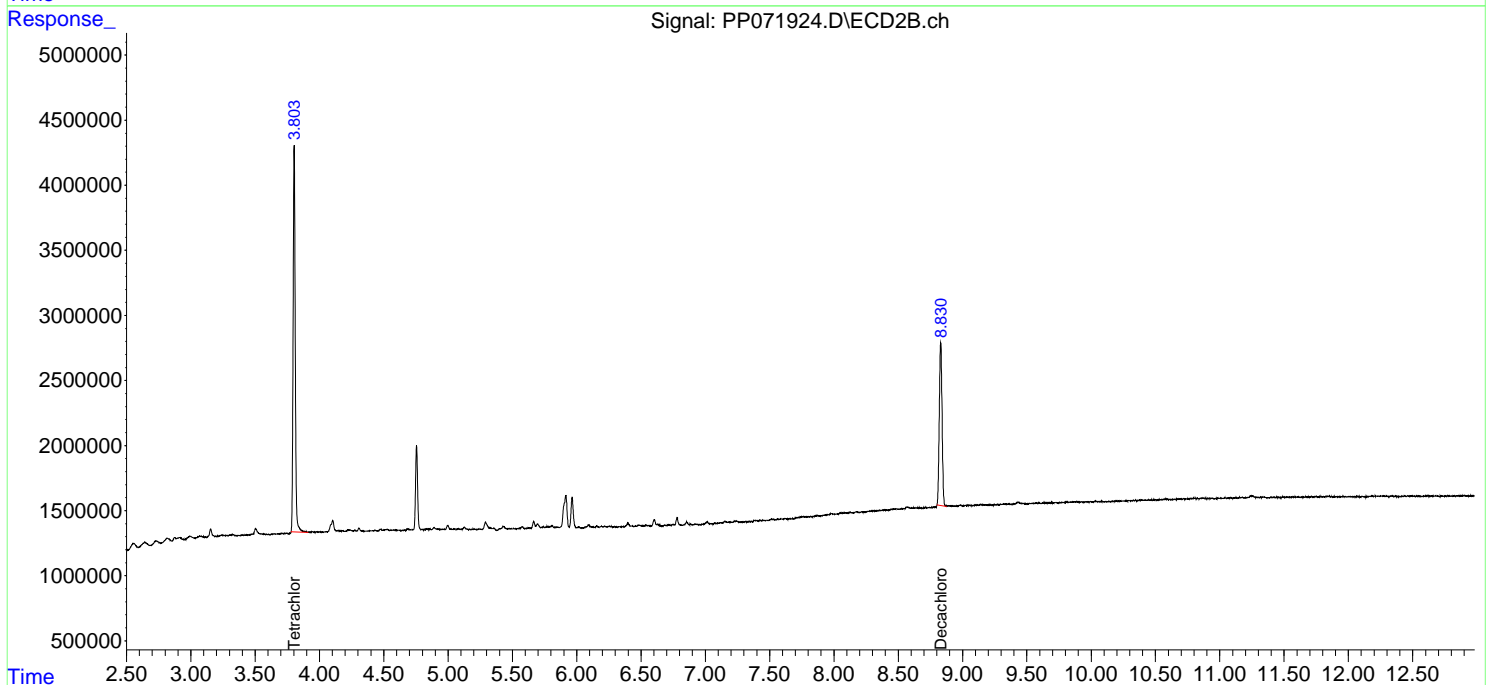
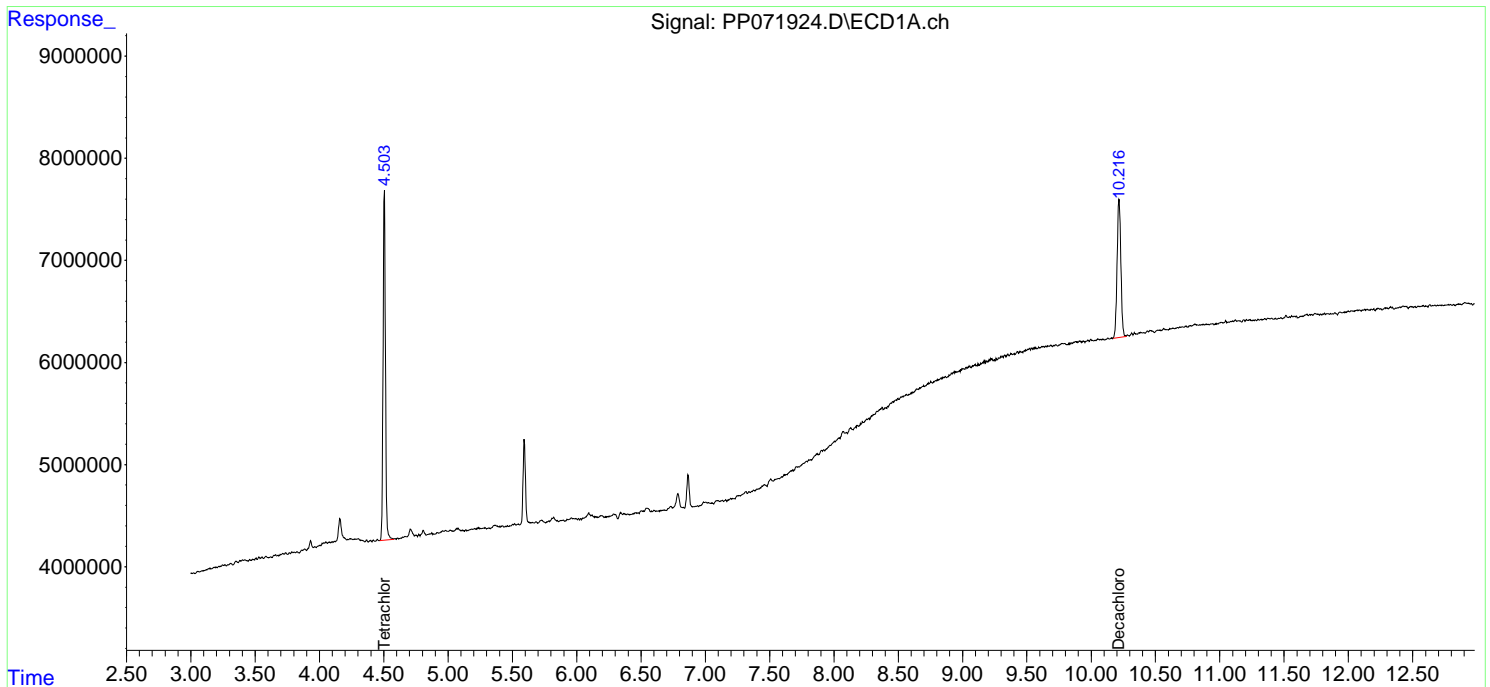
(f)=RT Delta > 1/2 Window (#)=Amounts differ by > 25% (m)=manual int.

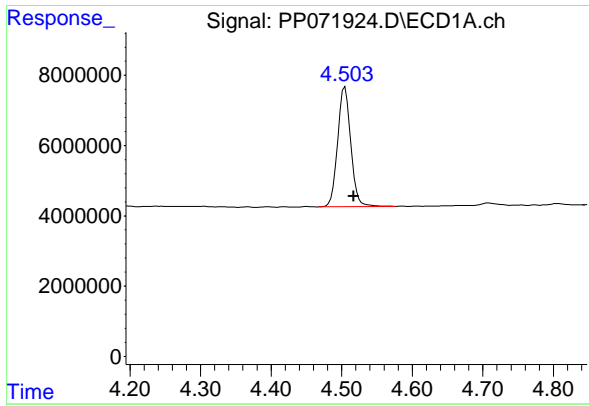
Data Path : Z:\pestpcbsrv\HPCHEM1\ECD\_P\Data\PP050925\  
Data File : PP071924.D  
Signal(s) : Signal #1: ECD1A.ch Signal #2: ECD2B.ch  
Acq On : 09 May 2025 17:25  
Operator : YP\AJ  
Sample : Q1983-25  
Misc :  
ALS Vial : 18 Sample Multiplier: 1

Instrument :  
ECD\_P  
ClientSampleId :  
OR-636-COMP-05

Integration File signal 1: autoint1.e  
Integration File signal 2: autoint2.e  
Quant Time: May 10 00:32:26 2025  
Quant Method : Z:\pestpcbsrv\HPCHEM1\ECD\_P\methods\PP042225.M  
Quant Title : GC EXTRACTABLES  
QLast Update : Wed Apr 23 05:02:06 2025  
Response via : Initial Calibration  
Integrator: ChemStation

Volume Inj. : 2 µl  
Signal #1 Phase : ZB-MR1 Signal #2 Phase: ZB-MR2  
Signal #1 Info : 30Mx0.32mmx 0.50µm Signal #2 Info : 30M x 0.32mm x 0.25µm

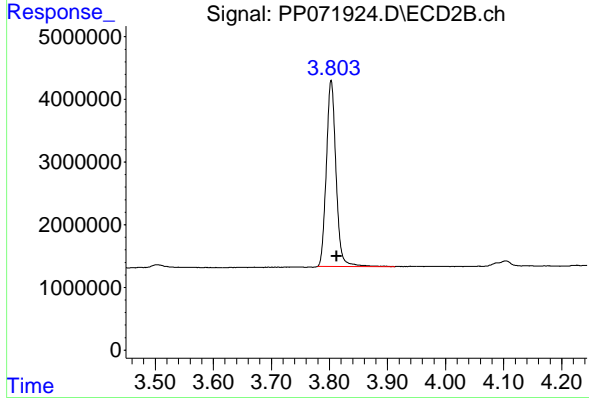




#1 Tetrachloro-m-xylene

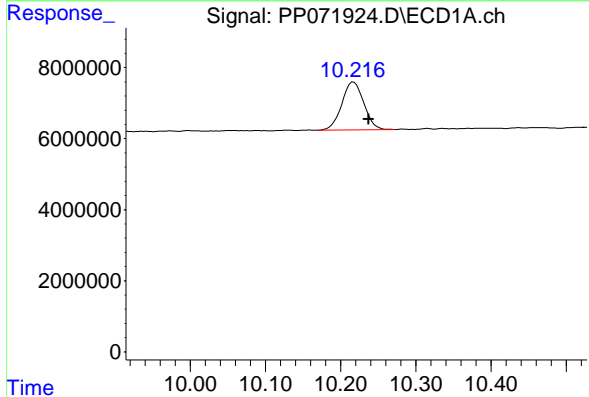
R.T.: 4.505 min  
 Delta R.T.: -0.012 min  
 Response: 44330580  
 Conc: 22.36 ng/ml

Instrument :  
 ECD\_P  
 ClientSampleId :  
 OR-636-COMP-05



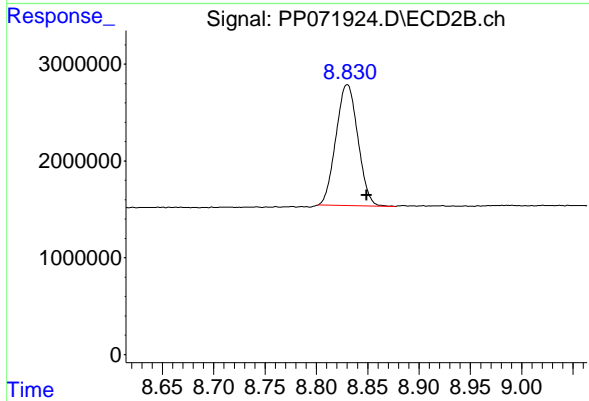
#1 Tetrachloro-m-xylene

R.T.: 3.803 min  
 Delta R.T.: -0.009 min  
 Response: 34332128  
 Conc: 24.37 ng/ml



#2 Decachlorobiphenyl

R.T.: 10.217 min  
 Delta R.T.: -0.020 min  
 Response: 27539127  
 Conc: 19.02 ng/ml



#2 Decachlorobiphenyl

R.T.: 8.830 min  
 Delta R.T.: -0.019 min  
 Response: 18551944  
 Conc: 21.15 ng/ml