

Data Path : Z:\pestpcbsrv\HPCHEM1\ECD_P\Data\PP050925\
 Data File : PP071944.D
 Signal(s) : Signal #1: ECD1A.ch Signal #2: ECD2B.ch
 Acq On : 10 May 2025 00:29
 Operator : YP\AJ
 Sample : Q1980-02
 Misc :
 ALS Vial : 33 Sample Multiplier: 1

Instrument :
 ECD_P
ClientSampleId :
 3832

Manual Integrations
APPROVED
 Reviewed By :Yogesh Patel 05/12/2025
 Supervised By :mohammad ahmed 05/14/2025

Integration File signal 1: autoint1.e
 Integration File signal 2: autoint2.e
 Quant Time: May 10 01:02:25 2025
 Quant Method : Z:\pestpcbsrv\HPCHEM1\ECD_P\methods\PP042225.M
 Quant Title : GC EXTRACTABLES
 QLast Update : Wed Apr 23 05:02:06 2025
 Response via : Initial Calibration
 Integrator: ChemStation

Volume Inj. : 2 µl
 Signal #1 Phase : ZB-MR1 Signal #2 Phase: ZB-MR2
 Signal #1 Info : 30Mx0.32mmx 0.50µ Signal #2 Info : 30M x 0.32mm x 0.25µm

Compound	RT#1	RT#2	Resp#1	Resp#2	ng/ml	ng/ml

System Monitoring Compounds						
1) SA Tetrachlo...	4.502	3.811	49416276	22518408	24.925m	15.986m#
2) SA Decachlor...	10.219	8.831	11969714	9386637	8.266	10.702 #

Target Compounds

(f)=RT Delta > 1/2 Window (#)=Amounts differ by > 25% (m)=manual int.

Data Path : Z:\pestpcbsrv\HPCHEM1\ECD_P\Data\PP050925\
 Data File : PP071944.D
 Signal(s) : Signal #1: ECD1A.ch Signal #2: ECD2B.ch
 Acq On : 10 May 2025 00:29
 Operator : YP\AJ
 Sample : Q1980-02
 Misc :
 ALS Vial : 33 Sample Multiplier: 1

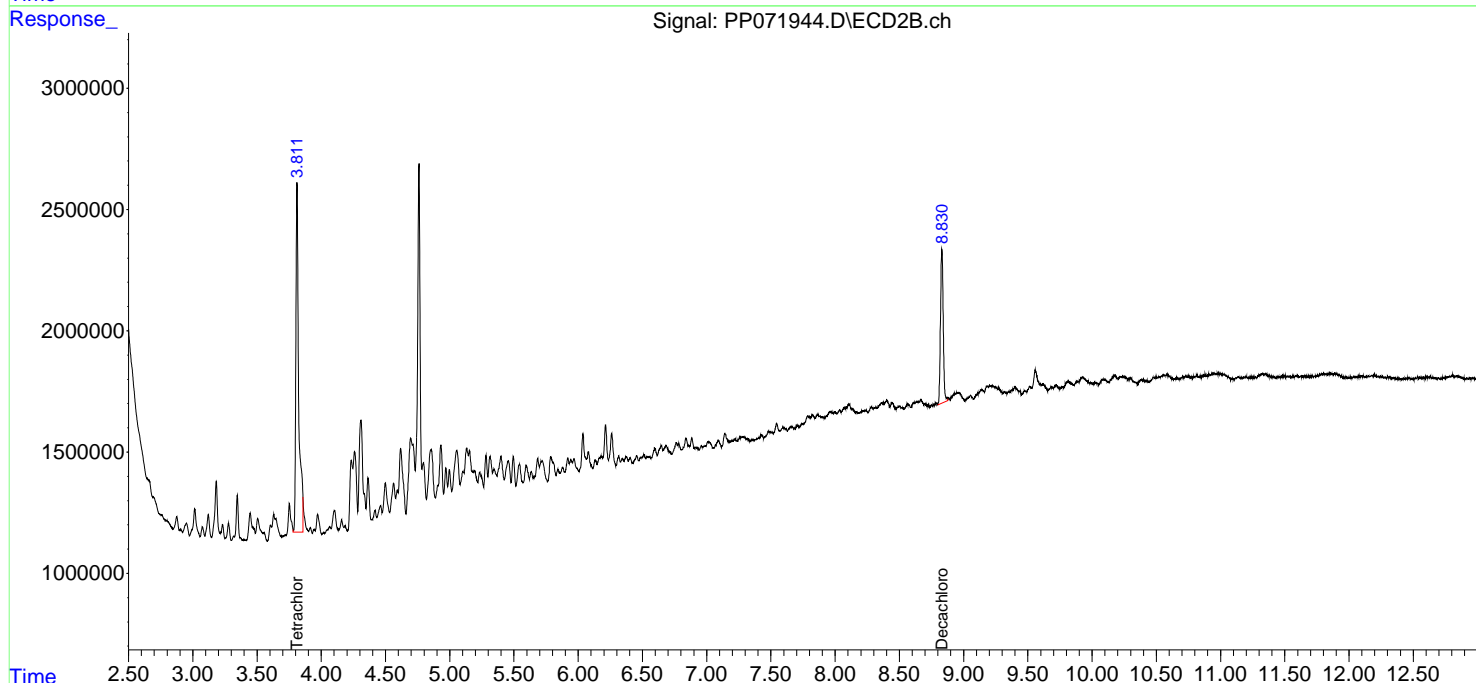
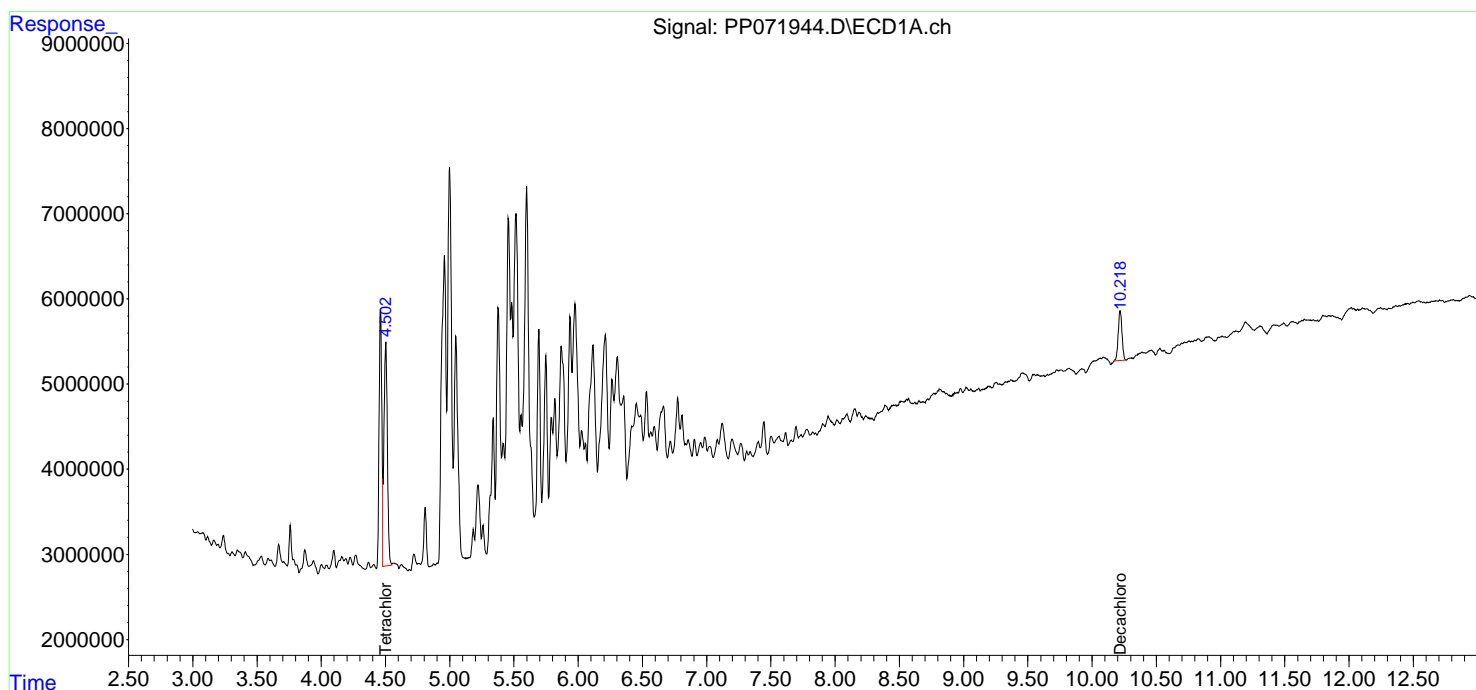
Instrument :
 ECD_P
 ClientSampleID :
 3832

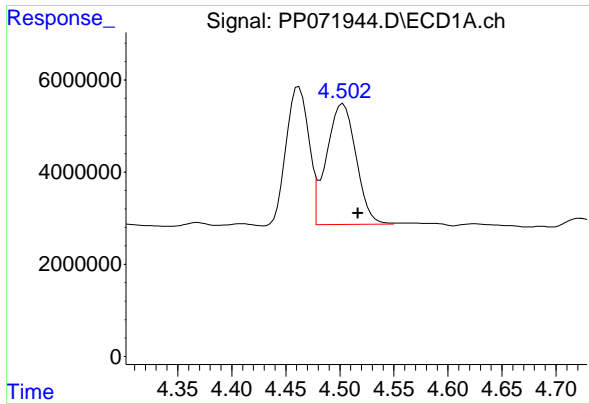
Manual Integrations
 APPROVED

Reviewed By :Yogesh Patel 05/12/2025
 Supervised By :mohammad ahmed 05/14/2025

Integration File signal 1: autoint1.e
 Integration File signal 2: autoint2.e
 Quant Time: May 10 01:02:25 2025
 Quant Method : Z:\pestpcbsrv\HPCHEM1\ECD_P\methods\PP042225.M
 Quant Title : GC EXTRACTABLES
 QLast Update : Wed Apr 23 05:02:06 2025
 Response via : Initial Calibration
 Integrator: ChemStation

Volume Inj. : 2 µl
 Signal #1 Phase : ZB-MR1 Signal #2 Phase: ZB-MR2
 Signal #1 Info : 30Mx0.32mmx 0.50µm Signal #2 Info : 30M x 0.32mm x 0.25µm





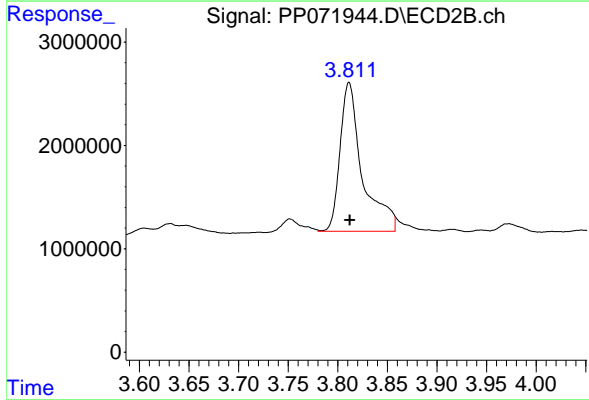
#1 Tetrachloro-m-xylene

R.T.: 4.502 min
 Delta R.T.: -0.015 min
 Response: 49416276
 Conc: 24.92 ng/ml

Instrument :
 ECD_P
 ClientSampleId :
 3832

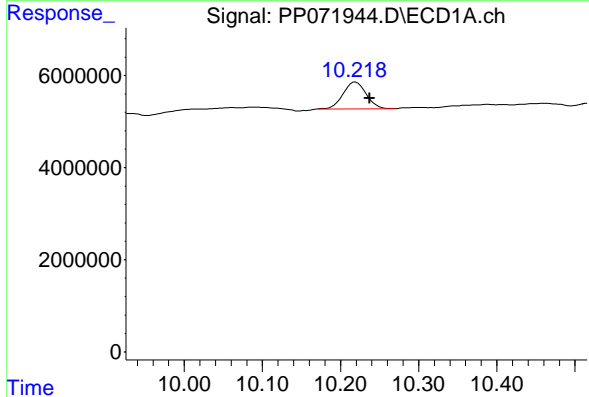
Manual Integrations
 APPROVED

Reviewed By :Yogesh Patel 05/12/2025
 Supervised By :mohammad ahmed 05/14/2025



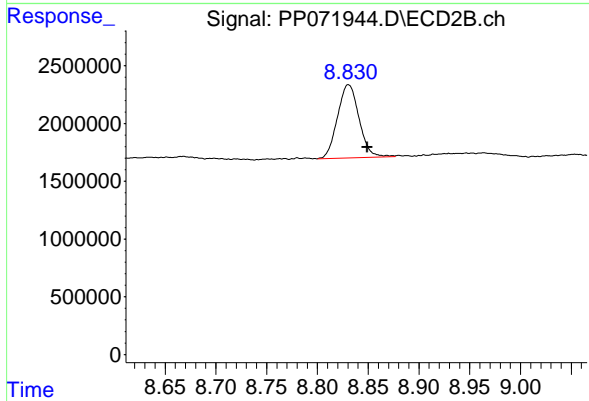
#1 Tetrachloro-m-xylene

R.T.: 3.811 min
 Delta R.T.: -0.001 min
 Response: 22518408
 Conc: 15.99 ng/ml m



#2 Decachlorobiphenyl

R.T.: 10.219 min
 Delta R.T.: -0.018 min
 Response: 11969714
 Conc: 8.27 ng/ml



#2 Decachlorobiphenyl

R.T.: 8.831 min
 Delta R.T.: -0.019 min
 Response: 9386637
 Conc: 10.70 ng/ml