

Data Path : Z:\pestpcbsrv\HPCHEM1\ECD_P\Data\PP051021\
 Data File : PP035703.D
 Signal(s) : Signal #1: ECD1A.CH Signal #2: ECD2B.CH
 Acq On : 10 May 2021 14:32
 Operator : DD\AJ
 Sample : I.BLK
 Misc :
 ALS Vial : 2 Sample Multiplier: 1

Instrument :
 ECD_P
 ClientSampleId :
 I.BLK

Integration File signal 1: autoint1.e
 Integration File signal 2: autoint2.e
 Quant Time: May 11 06:43:18 2021
 Quant Method : Z:\pestpcbsrv\HPCHEM1\ECD_P\methods\PP051021.M
 Quant Title : GC EXTRACTABLES
 QLast Update : Tue May 11 06:42:19 2021
 Response via : Initial Calibration
 Integrator: ChemStation 6890 Scale Mode: Small noise peaks clipped

Volume Inj. : 2 µl
 Signal #1 Phase : ZB-MR1 Signal #2 Phase: ZB-MR2
 Signal #1 Info : 30Mx0.32mmx 0.50µ Signal #2 Info : 30M x 0.32mm x 0.25µm

Compound	RT#1	RT#2	Resp#1	Resp#2	ng/ml	ng/ml

System Monitoring Compounds						
1) SA Tetrachlo...	4.779	4.198	471518	650198	20.124	19.128
2) SA Decachlor...	10.625	9.443	224289	430921	19.926	20.377

Target Compounds

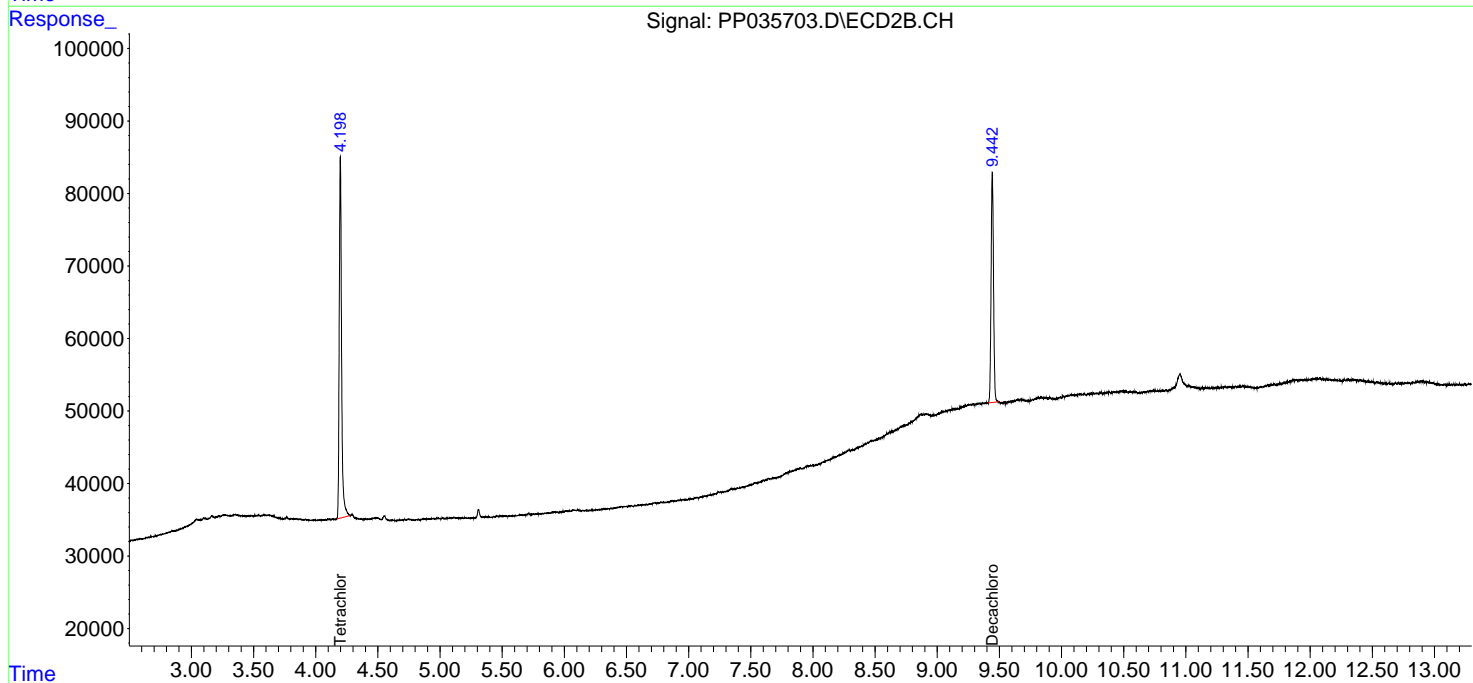
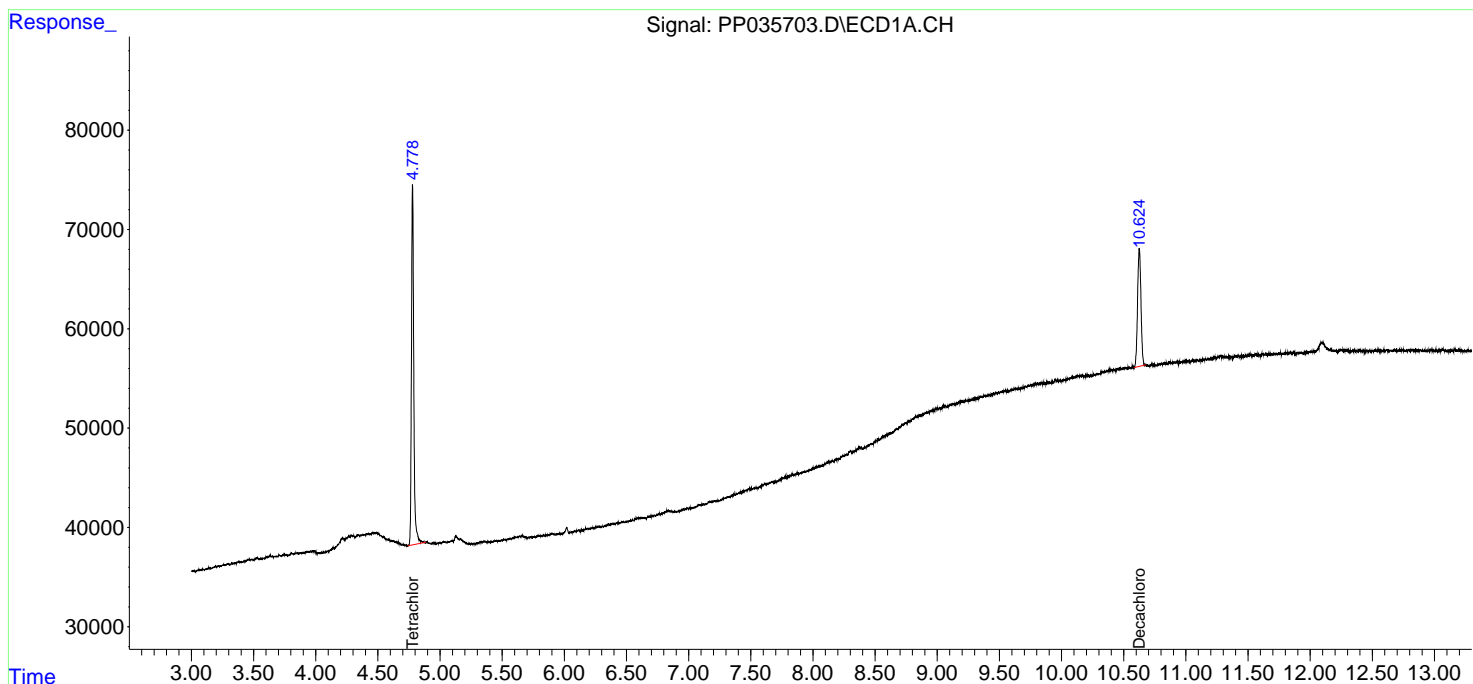
(f)=RT Delta > 1/2 Window (#)=Amounts differ by > 25% (m)=manual int.

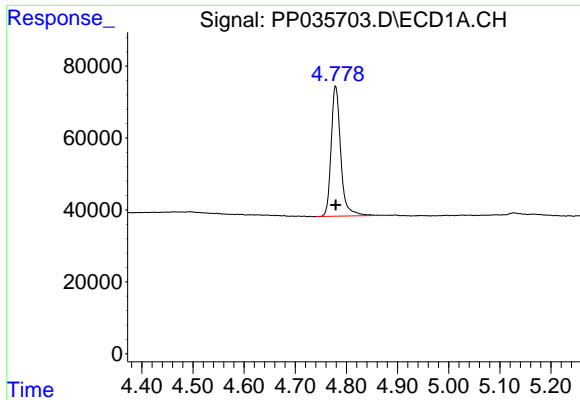
Data Path : Z:\pestpcbsrv\HPCHEM1\ECD_P\Data\PP051021\
 Data File : PP035703.D
 Signal(s) : Signal #1: ECD1A.CH Signal #2: ECD2B.CH
 Acq On : 10 May 2021 14:32
 Operator : DD\AJ
 Sample : I.BLK
 Misc :
 ALS Vial : 2 Sample Multiplier: 1

Instrument :
 ECD_P
 ClientSampleId :
 I.BLK

Integration File signal 1: autoint1.e
 Integration File signal 2: autoint2.e
 Quant Time: May 11 06:43:18 2021
 Quant Method : Z:\pestpcbsrv\HPCHEM1\ECD_P\methods\PP051021.M
 Quant Title : GC EXTRACTABLES
 QLast Update : Tue May 11 06:42:19 2021
 Response via : Initial Calibration
 Integrator: ChemStation 6890 Scale Mode: Small noise peaks clipped

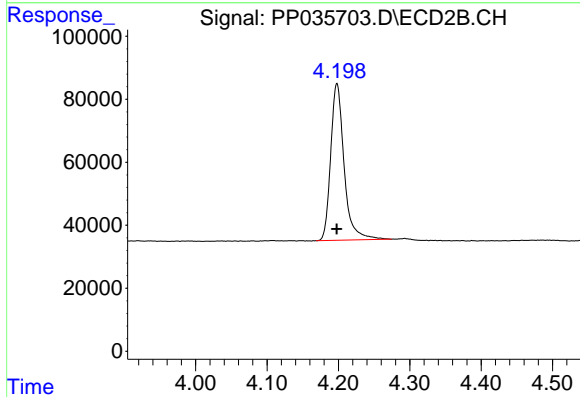
Volume Inj. : 2 µl
 Signal #1 Phase : ZB-MR1 Signal #2 Phase: ZB-MR2
 Signal #1 Info : 30Mx0.32mmx 0.50µ Signal #2 Info : 30M x 0.32mm x 0.25µm



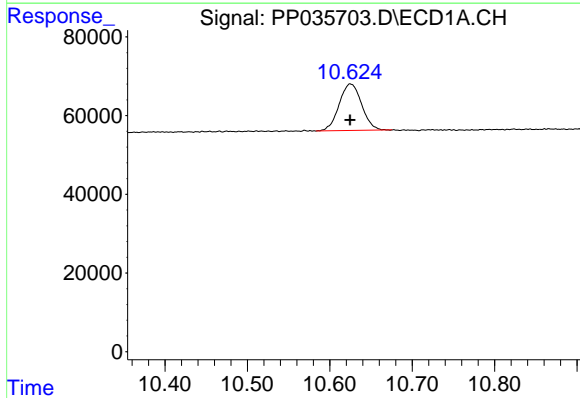


#1 Tetrachloro-m-xylene
 R.T.: 4.779 min
 Delta R.T.: 0.000 min
 Response: 471518
 Conc: 20.12 ng/ml

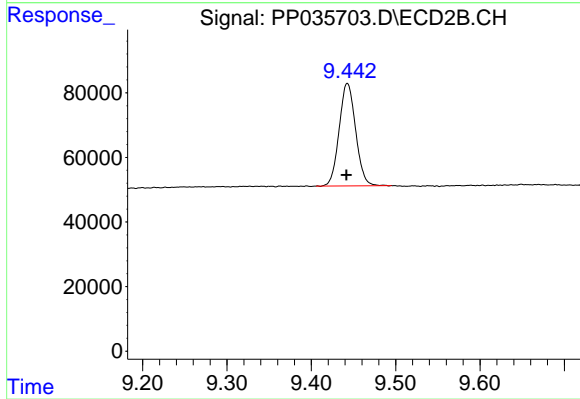
Instrument :
 ECD_P
 ClientSampleId :
 I.BLK



#1 Tetrachloro-m-xylene
 R.T.: 4.198 min
 Delta R.T.: 0.000 min
 Response: 650198
 Conc: 19.13 ng/ml



#2 Decachlorobiphenyl
 R.T.: 10.625 min
 Delta R.T.: 0.000 min
 Response: 224289
 Conc: 19.93 ng/ml



#2 Decachlorobiphenyl
 R.T.: 9.443 min
 Delta R.T.: 0.001 min
 Response: 430921
 Conc: 20.38 ng/ml