

Data Path : Z:\pestpcbsrv\HPCHEM1\ECD_P\Data\PP051021\
 Data File : PP035751.D
 Signal(s) : Signal #1: ECD1A.CH Signal #2: ECD2B.CH
 Acq On : 11 May 2021 3:56
 Operator : DD\AJ
 Sample : PB136263BS
 Misc :
 ALS Vial : 48 Sample Multiplier: 1

Instrument :
 ECD_P
 ClientSampleId :
 PB136263BS

Integration File signal 1: autoint1.e
 Integration File signal 2: autoint2.e
 Quant Time: May 11 06:49:18 2021
 Quant Method : Z:\pestpcbsrv\HPCHEM1\ECD_P\methods\PP051021.M
 Quant Title : GC EXTRACTABLES
 QLast Update : Tue May 11 06:42:19 2021
 Response via : Initial Calibration
 Integrator: ChemStation 6890 Scale Mode: Small noise peaks clipped

Volume Inj. : 2 µl
 Signal #1 Phase : ZB-MR1 Signal #2 Phase: ZB-MR2
 Signal #1 Info : 30Mx0.32mmx 0.50µ Signal #2 Info : 30M x 0.32mm x 0.25µm

Compound	RT#1	RT#2	Resp#1	Resp#2	ng/ml	ng/ml

System Monitoring Compounds						
1) SA Tetrachlo...	4.777	4.198	482526	624308	20.594	18.366
2) SA Decachlor...	10.619	9.438	263075	464214	23.372	21.951
Target Compounds						
3) L1 AR-1016-1	6.084	5.442	293969	350805	457.849	437.333
4) L1 AR-1016-2	6.106	5.463	478226	755596	462.724	436.102
5) L1 AR-1016-3	6.172	5.654	322798	315704	473.493	436.407
6) L1 AR-1016-4	6.278	5.696	263480	284764	480.085	436.945
7) L1 AR-1016-5	6.586	5.925	227926	340331	448.801	432.309
31) L7 AR-1260-1	7.752	7.003	423090	633801	469.286	442.075
32) L7 AR-1260-2	8.017	7.197	454911	759794	466.993	440.155
33) L7 AR-1260-3	8.379	7.351	305170	704925	456.061	436.879
34) L7 AR-1260-4	8.607	7.827	377981	529103	482.336	458.653
35) L7 AR-1260-5	8.922	8.071	660191	1158063	500.530	451.332

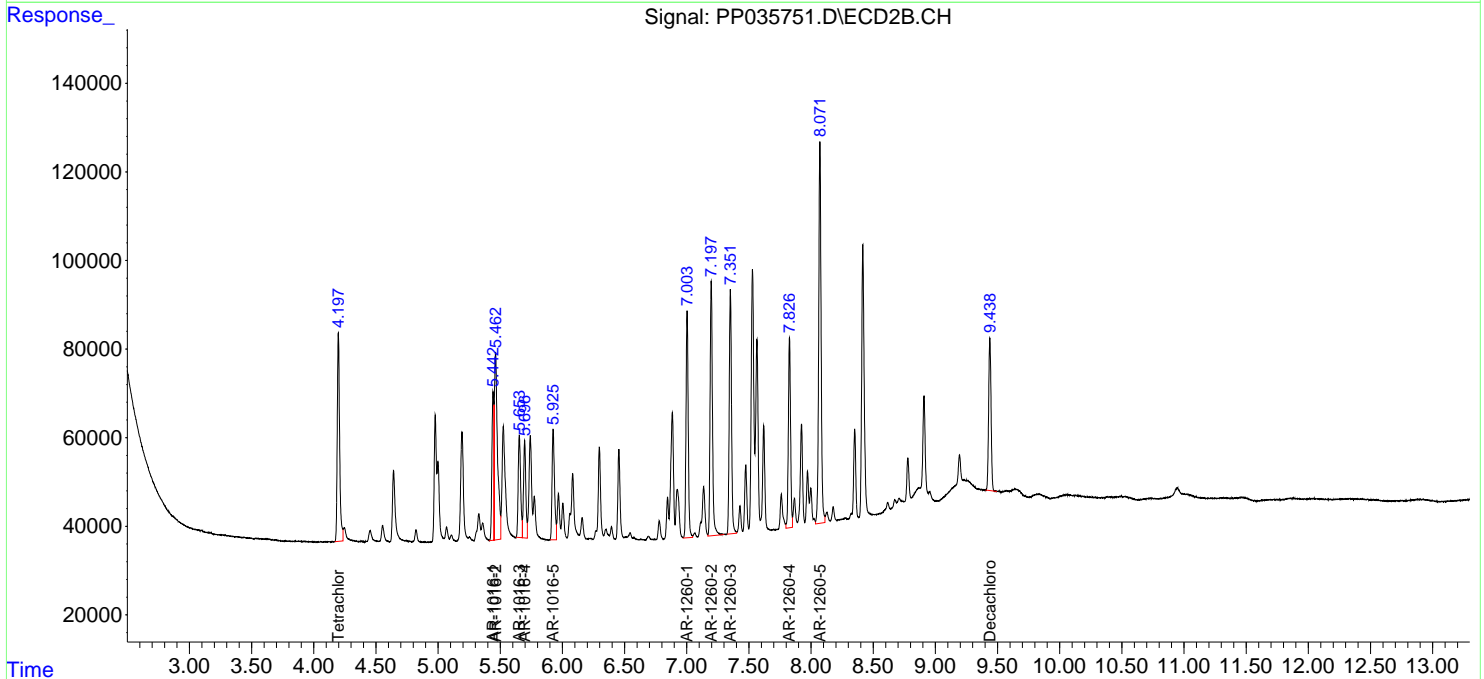
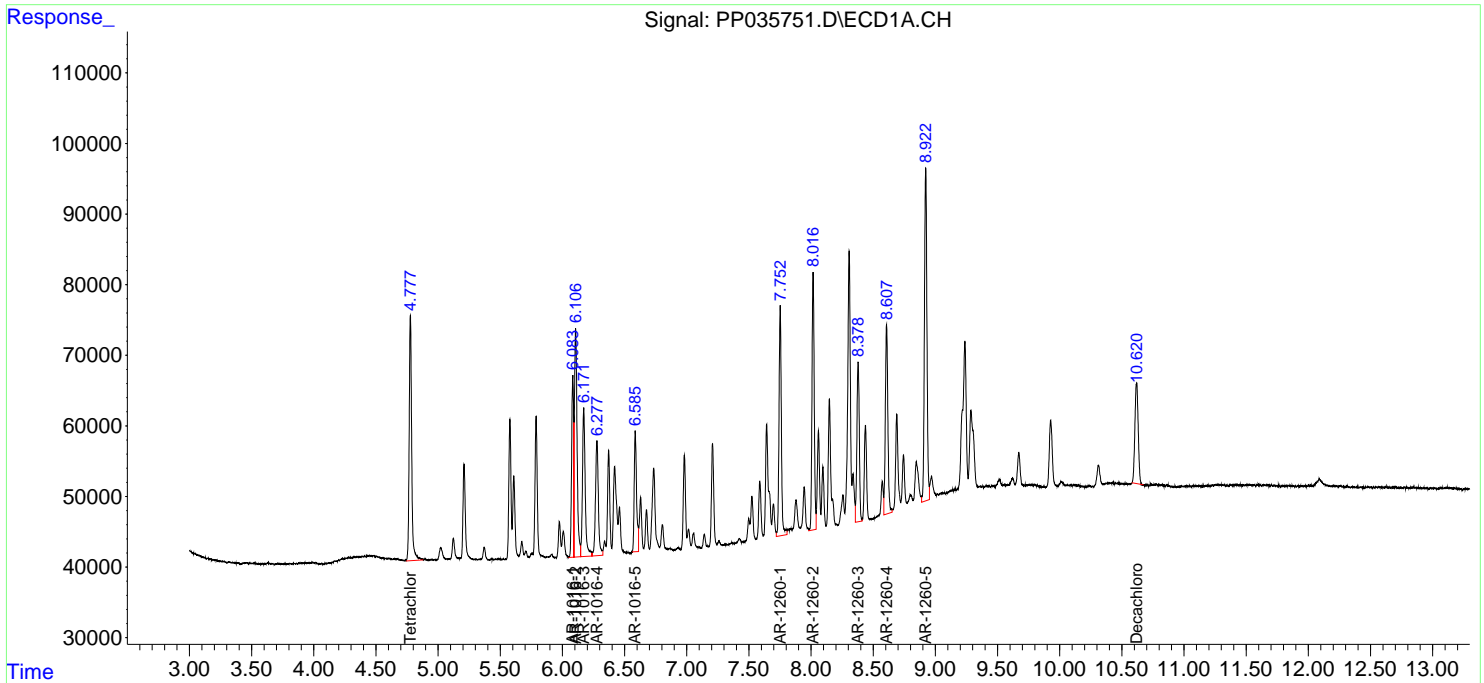
(f)=RT Delta > 1/2 Window (#)=Amounts differ by > 25% (m)=manual int.

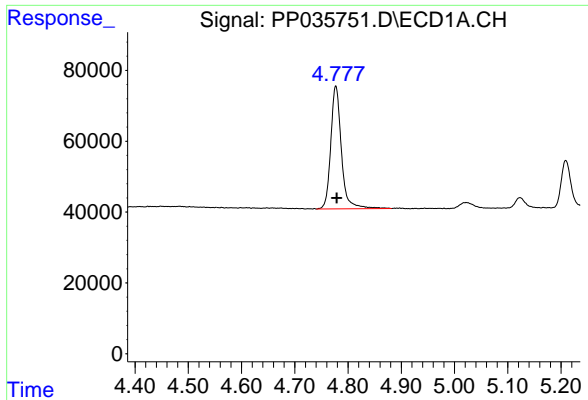
Data Path : Z:\pestpcbsrv\HPCHEM1\ECD_P\Data\PP051021\
 Data File : PP035751.D
 Signal(s) : Signal #1: ECD1A.CH Signal #2: ECD2B.CH
 Acq On : 11 May 2021 3:56
 Operator : DD\AJ
 Sample : PB136263BS
 Misc :
 ALS Vial : 48 Sample Multiplier: 1

Instrument :
 ECD_P
 ClientSampled :
 PB136263BS

Integration File signal 1: autoint1.e
 Integration File signal 2: autoint2.e
 Quant Time: May 11 06:49:18 2021
 Quant Method : Z:\pestpcbsrv\HPCHEM1\ECD_P\methods\PP051021.M
 Quant Title : GC EXTRACTABLES
 QLast Update : Tue May 11 06:42:19 2021
 Response via : Initial Calibration
 Integrator: ChemStation 6890 Scale Mode: Small noise peaks clipped

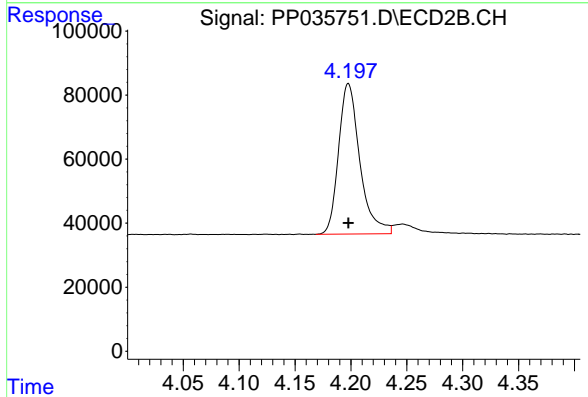
Volume Inj. : 2 µl
 Signal #1 Phase : ZB-MR1 Signal #2 Phase: ZB-MR2
 Signal #1 Info : 30Mx0.32mmx 0.50µ Signal #2 Info : 30M x 0.32mm x 0.25µm



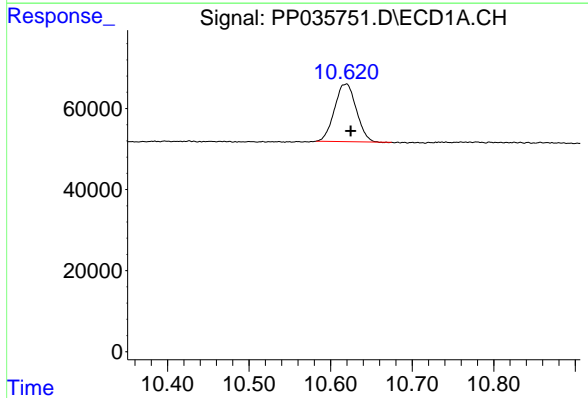


#1 Tetrachloro-m-xylene
 R.T.: 4.777 min
 Delta R.T.: -0.002 min
 Response: 482526
 Conc: 20.59 ng/ml

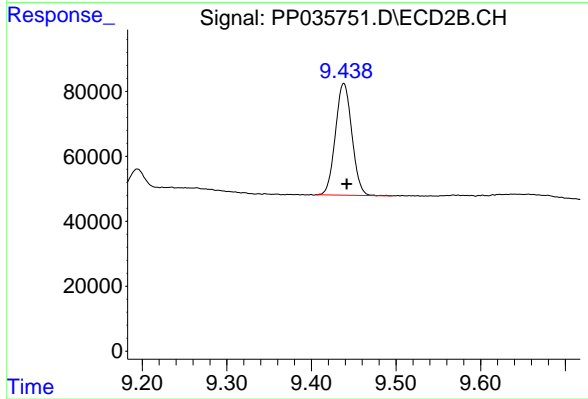
Instrument :
 ECD_P
 ClientSampleId :
 PB136263BS



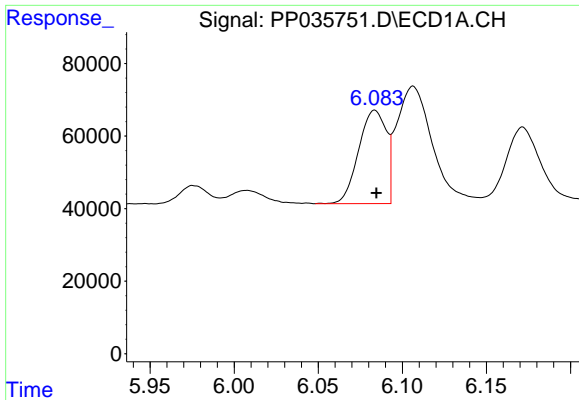
#1 Tetrachloro-m-xylene
 R.T.: 4.198 min
 Delta R.T.: 0.000 min
 Response: 624308
 Conc: 18.37 ng/ml



#2 Decachlorobiphenyl
 R.T.: 10.619 min
 Delta R.T.: -0.006 min
 Response: 263075
 Conc: 23.37 ng/ml

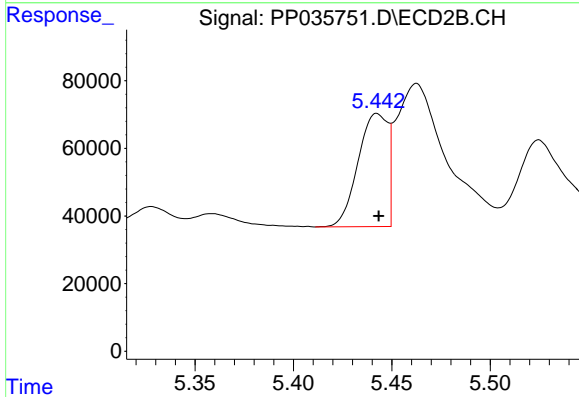


#2 Decachlorobiphenyl
 R.T.: 9.438 min
 Delta R.T.: -0.004 min
 Response: 464214
 Conc: 21.95 ng/ml

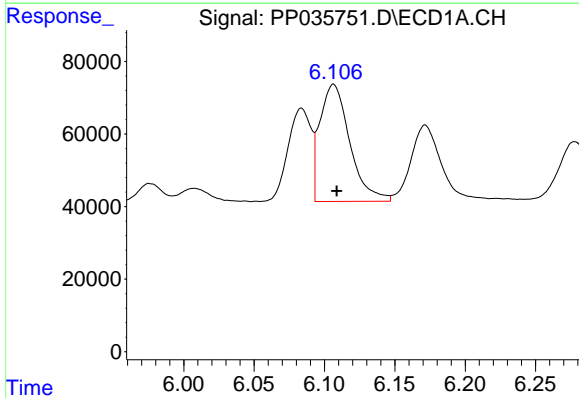


#3 AR-1016-1
 R.T.: 6.084 min
 Delta R.T.: 0.000 min
 Response: 293969
 Conc: 457.85 ng/ml

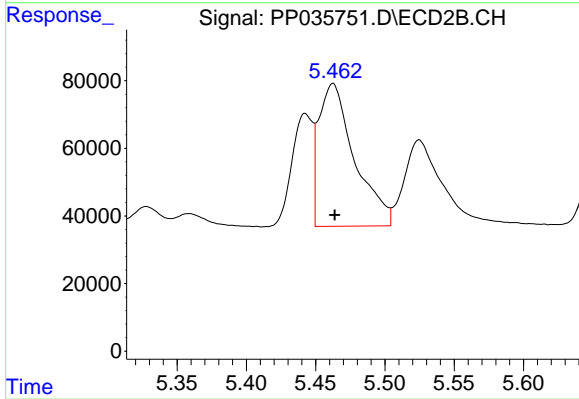
Instrument :
 ECD_P
 ClientSampleId :
 PB136263BS



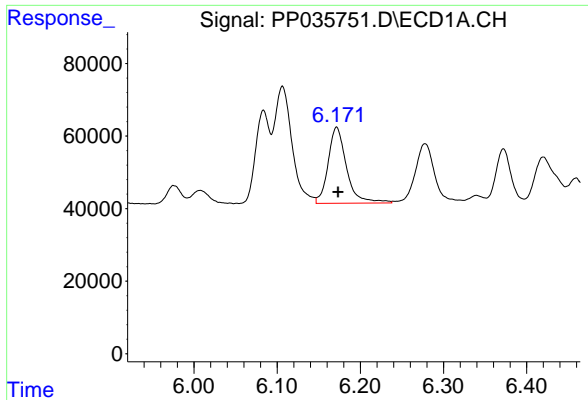
#3 AR-1016-1
 R.T.: 5.442 min
 Delta R.T.: 0.000 min
 Response: 350805
 Conc: 437.33 ng/ml



#4 AR-1016-2
 R.T.: 6.106 min
 Delta R.T.: -0.002 min
 Response: 478226
 Conc: 462.72 ng/ml

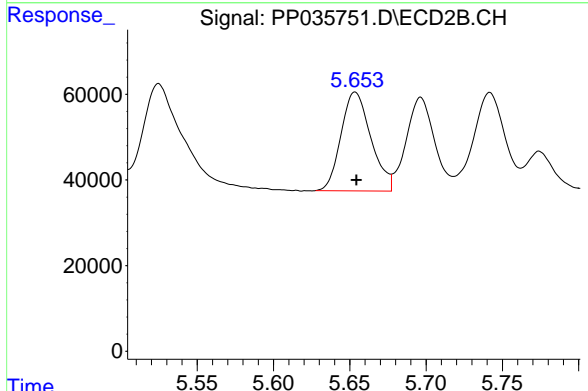


#4 AR-1016-2
 R.T.: 5.463 min
 Delta R.T.: -0.001 min
 Response: 755596
 Conc: 436.10 ng/ml

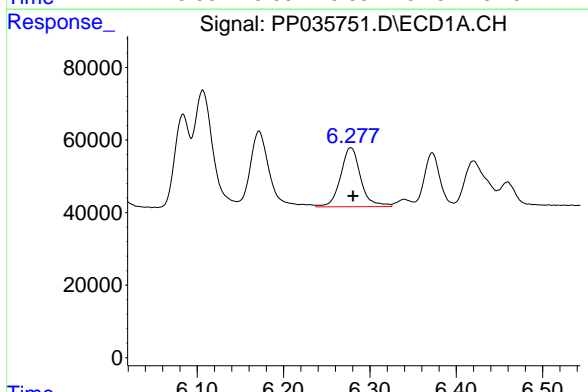


#5 AR-1016-3
 R.T.: 6.172 min
 Delta R.T.: -0.002 min
 Response: 322798
 Conc: 473.49 ng/ml

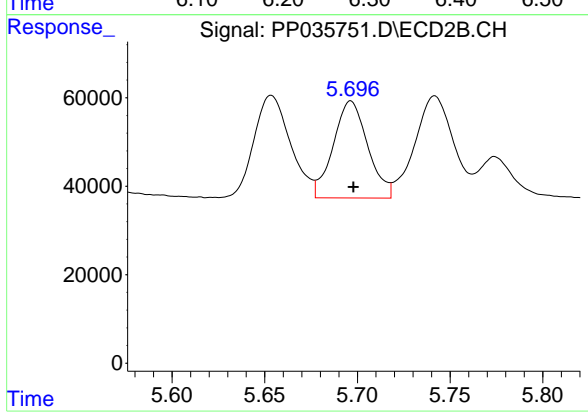
Instrument :
 ECD_P
 ClientSampleId :
 PB136263BS



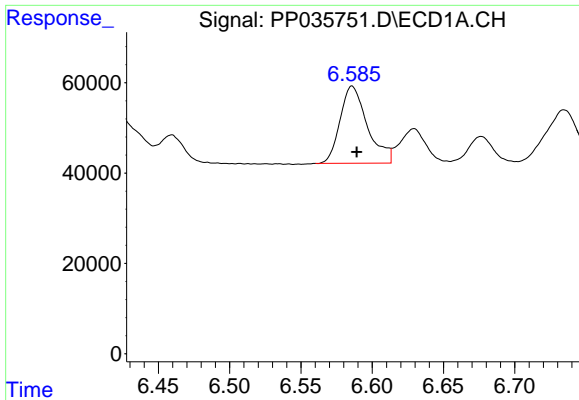
#5 AR-1016-3
 R.T.: 5.654 min
 Delta R.T.: 0.000 min
 Response: 315704
 Conc: 436.41 ng/ml



#6 AR-1016-4
 R.T.: 6.278 min
 Delta R.T.: -0.003 min
 Response: 263480
 Conc: 480.08 ng/ml



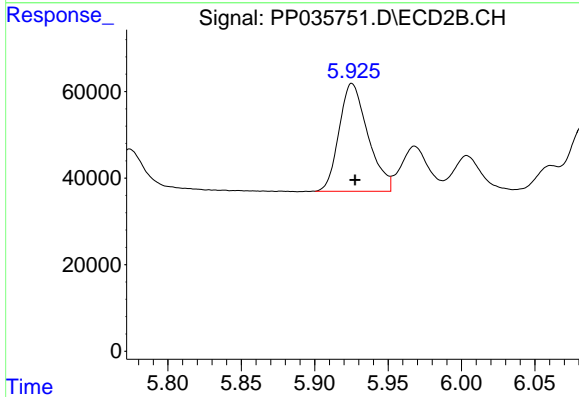
#6 AR-1016-4
 R.T.: 5.696 min
 Delta R.T.: -0.001 min
 Response: 284764
 Conc: 436.94 ng/ml



#7 AR-1016-5

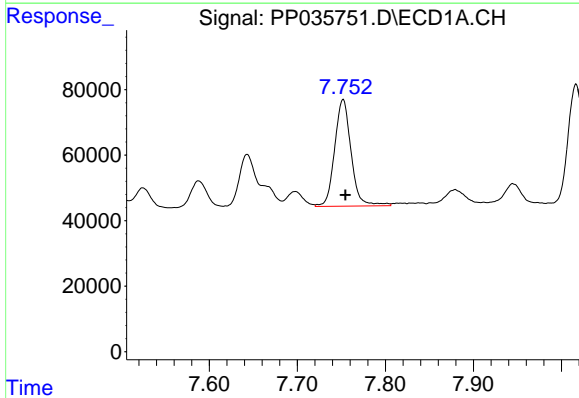
R.T.: 6.586 min
 Delta R.T.: -0.003 min
 Response: 227926
 Conc: 448.80 ng/ml

Instrument :
 ECD_P
 ClientSampleId :
 PB136263BS



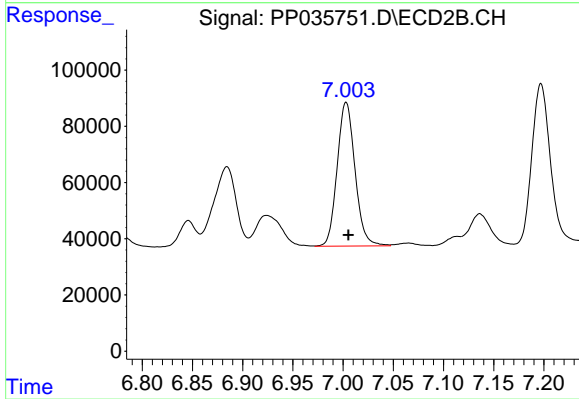
#7 AR-1016-5

R.T.: 5.925 min
 Delta R.T.: -0.002 min
 Response: 340331
 Conc: 432.31 ng/ml



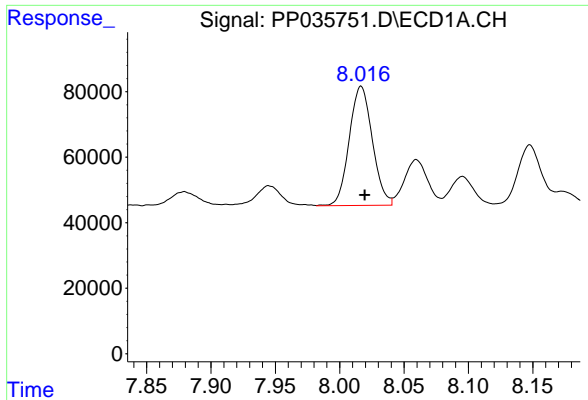
#31 AR-1260-1

R.T.: 7.752 min
 Delta R.T.: -0.003 min
 Response: 423090
 Conc: 469.29 ng/ml



#31 AR-1260-1

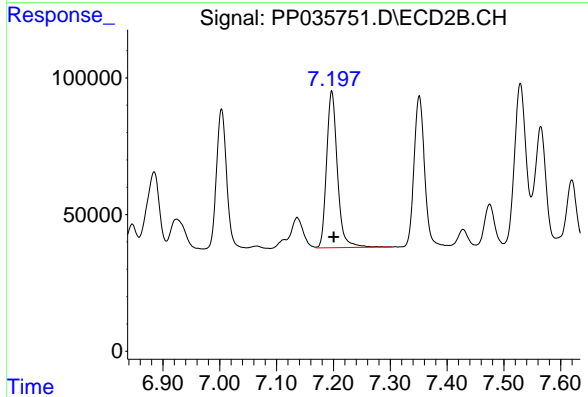
R.T.: 7.003 min
 Delta R.T.: -0.002 min
 Response: 633801
 Conc: 442.07 ng/ml



#32 AR-1260-2

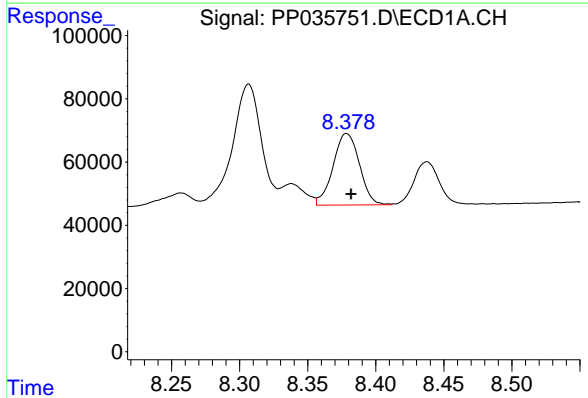
R.T.: 8.017 min
Delta R.T.: -0.003 min
Response: 454911
Conc: 466.99 ng/ml

Instrument :
ECD_P
ClientSampleId :
PB136263BS



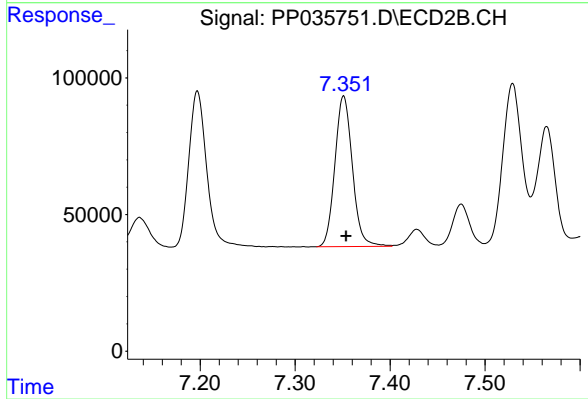
#32 AR-1260-2

R.T.: 7.197 min
Delta R.T.: -0.003 min
Response: 759794
Conc: 440.15 ng/ml



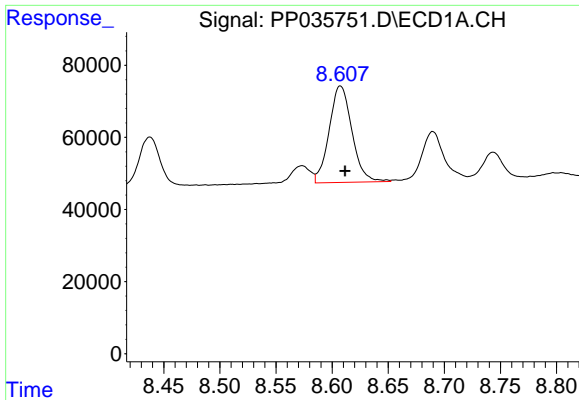
#33 AR-1260-3

R.T.: 8.379 min
Delta R.T.: -0.003 min
Response: 305170
Conc: 456.06 ng/ml



#33 AR-1260-3

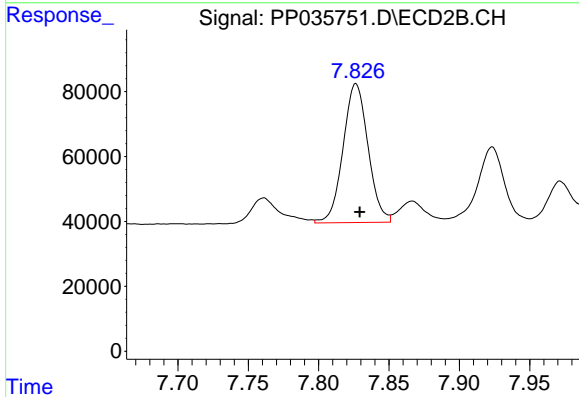
R.T.: 7.351 min
Delta R.T.: -0.002 min
Response: 704925
Conc: 436.88 ng/ml



#34 AR-1260-4

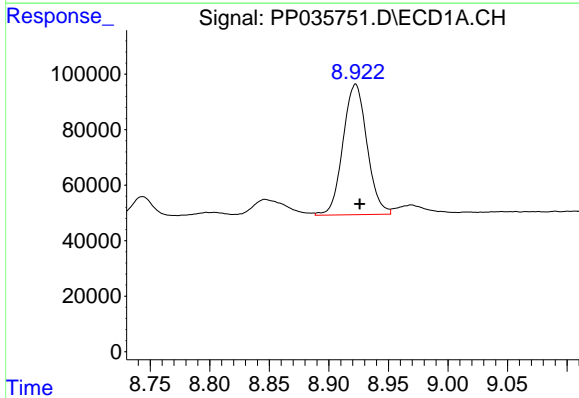
R.T.: 8.607 min
 Delta R.T.: -0.004 min
 Response: 377981
 Conc: 482.34 ng/ml

Instrument :
 ECD_P
 ClientSampleId :
 PB136263BS



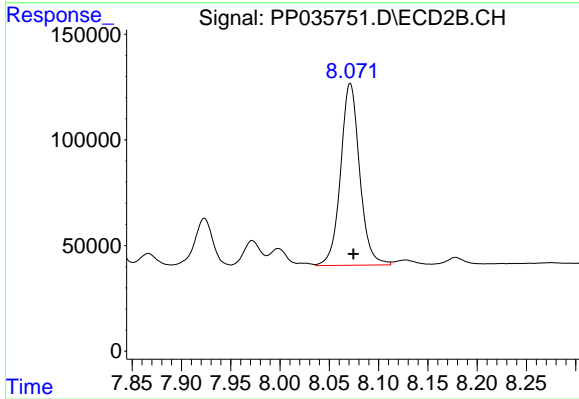
#34 AR-1260-4

R.T.: 7.827 min
 Delta R.T.: -0.003 min
 Response: 529103
 Conc: 458.65 ng/ml



#35 AR-1260-5

R.T.: 8.922 min
 Delta R.T.: -0.003 min
 Response: 660191
 Conc: 500.53 ng/ml



#35 AR-1260-5

R.T.: 8.071 min
 Delta R.T.: -0.003 min
 Response: 1158063
 Conc: 451.33 ng/ml